

**Workshop - Banks Peninsula Water Management Zone  
Committee  
MINUTES ATTACHMENTS**

---

**Date:** Tuesday 10 September 2024  
**Time:** 6:00 pm  
**Venue:** To be held on Zoom

---

<b>TABLE OF CONTENTS NGĀ IHIRANGI</b>	<b>PAGE</b>
<b>2. Stormwater Management Plan for Settlements of Te Pātaka o Rākaihautū Banks Peninsula</b>	
A. Stormwater and Land Drainage for Te Pātaka o Rākaihautū Banks Peninsula .....	3

---



# Te Pātaka o Rākaihautū / Banks Peninsula Settlements Stormwater Management Plan



Photo: Kelvin McMillan

Paul Dickson, Asset Planning - Stormwater & Land Drainage, for  
Te Pātaka o Rākaihautū / Banks Peninsula Zone Committee  
20 August 2024

# Background

- What is a Stormwater Management Plan?
- Scope
- Content
- Consultation



# What is a SMP?

Comprehensive Stormwater Network Discharge Consent (2019):  
To limit the adverse effects of stormwater discharges on  
surface and groundwater quality and quantity



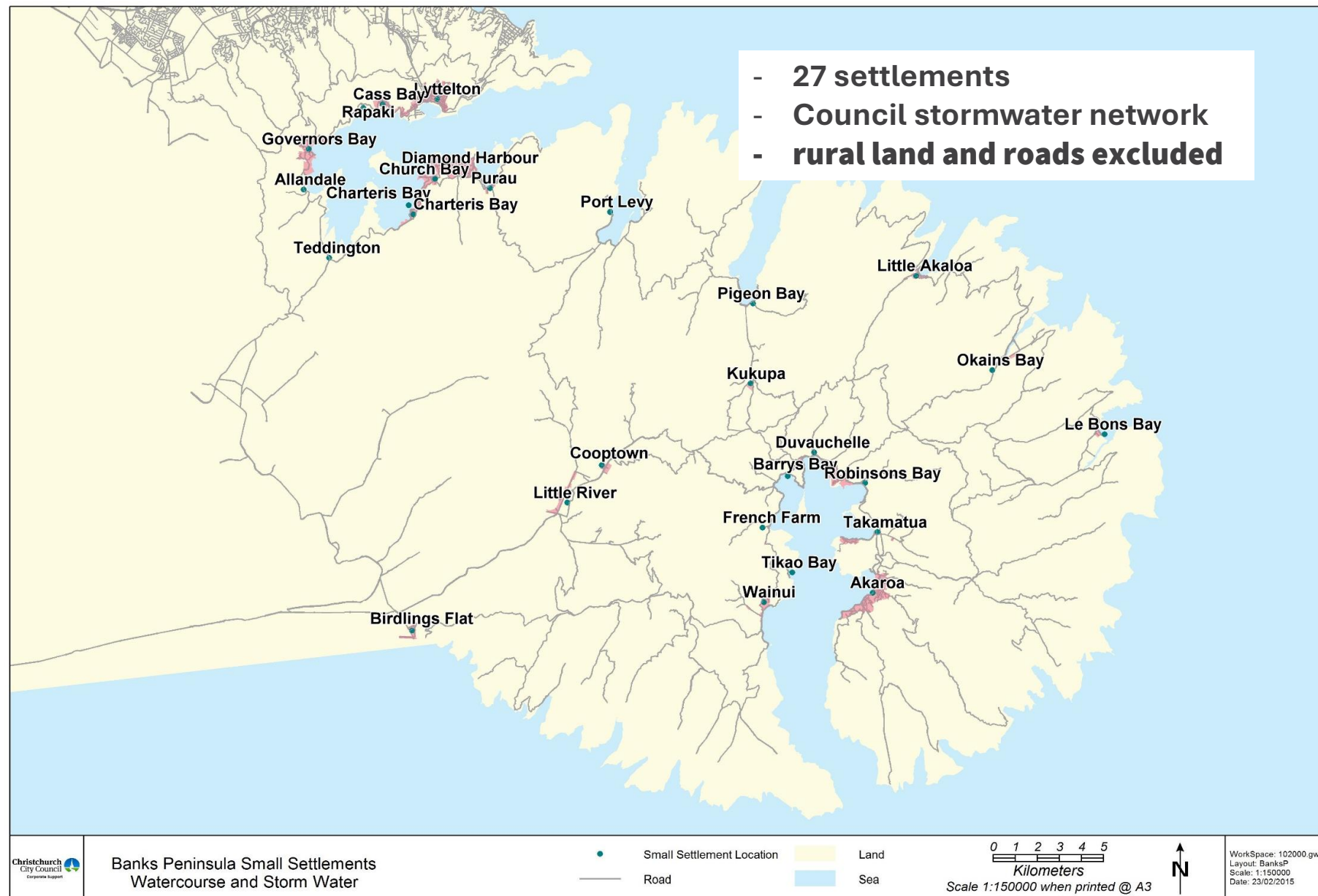
- Stormwater Management Plans
- Environmental monitoring
- Audit industrial sites
- Erosion & sediment control in construction
- Education and engagement

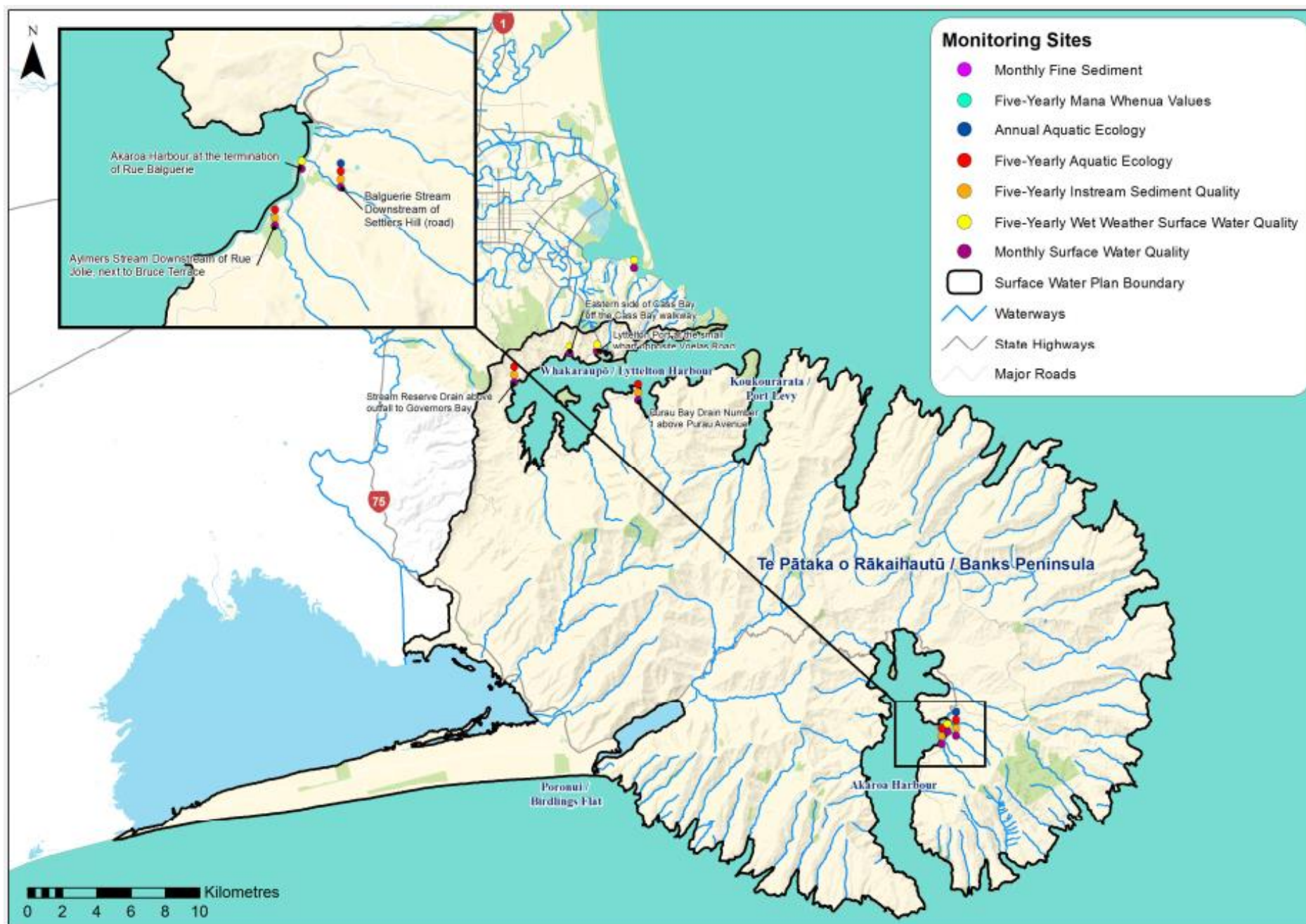
Long Term Plan  
Separate process, funds  
delivery of SMPs



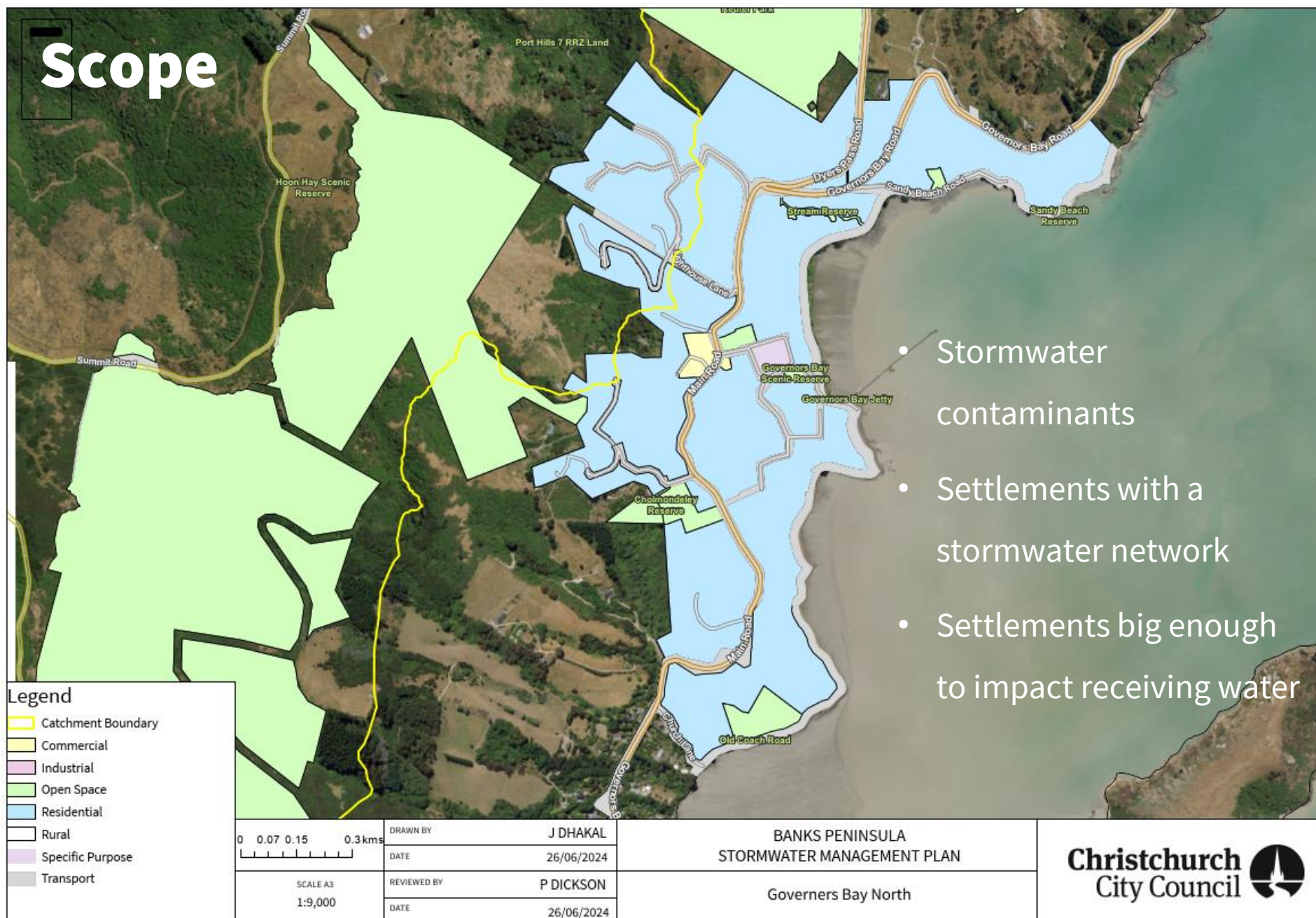
- Set catchment targets to reduce urban contaminants (sediment and heavy metals)
- Plan for stormwater treatment
- River flooding targets (within City)











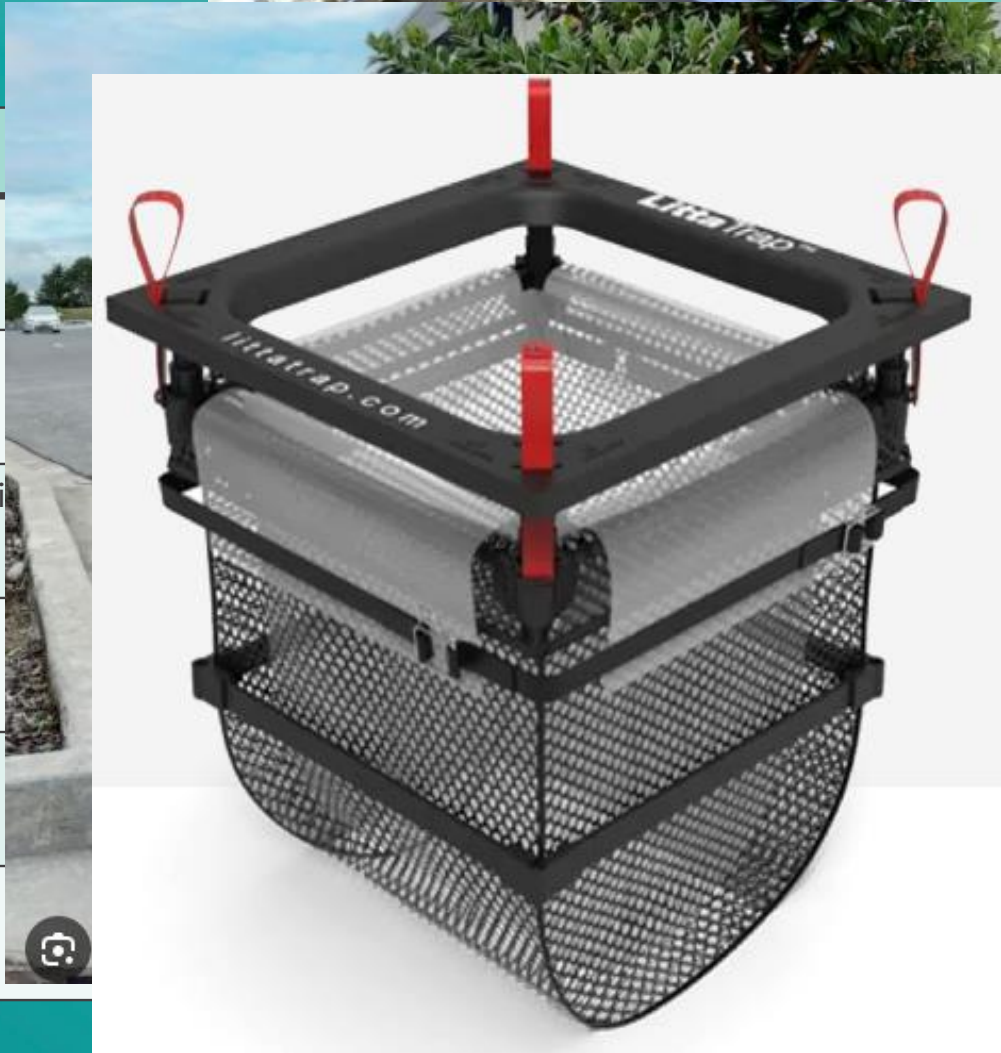


# Current approach

- Identify the existing state of the environment
- Consider goals and concerns of the community (within SMP scope)
- Priority to larger settlements
- Likely to target copper and zinc
- Looking at treatment options suitable for small spaces

# More Likely Mitigation Methods

Mitigation method	Removes
Cartridge filter	Sediment, metals
Bio-filter	Sediment, metals
Catchpit filter	Sediment, larger particles
Street sweeping	Particles, grit
Roof painting	Zinc
Low-copper brake pads	Copper



# Flooding

Information has been compiled about

- Historical flooding (Akaroa basin)
- Recent flooding incidents (Little River, Le Bons Bay, Lyttelton)
- Interviews with residents in selected settlements (Eastern Bays)

SMP to contain a flood risk summary for each settlement

SMP could support future requests from for LTP funding or investigations



# Consultation

Potentially for discussion:

- Priority contaminants
- Rural v urban sources (especially sediment)
- Means of capturing contaminants
- Importance of flooding in settlements
- Other?

**Kōrero**

<https://ccc.govt.nz/environment/water/waterways>