

**Te Pātaka o Rākaihautū Banks Peninsula Community
Board Information Session/Workshop
MINUTES ATTACHMENTS**

Date: Monday 23 September 2024
Time: 10 am
Venue: Members attended the Information Session by
audio/visual link.

TABLE OF CONTENTS NGĀ IHIRANGI	PAGE
3. Fire and Emergency Update	
A. Item 3 Fire and Emergency Update Wildfire Prevention Presentation Te Pātaka o Rākaihautū Banks Peninsula Community Board 23 September 2024	3
4. 177 Pūrau Avenue return by way of transfer to Te Hapū o Ngāti Wheke	
A. Item 4 177 Pūrau Avenue return by way of transfer Te Pātaka o Rākaihautū Banks Peninsula Community Board presentation - 23 September 2024	13



**FIRE
EMERGENCY**
NEW ZEALAND

How to keep your properties safe this summer

Checkitsalright.nz

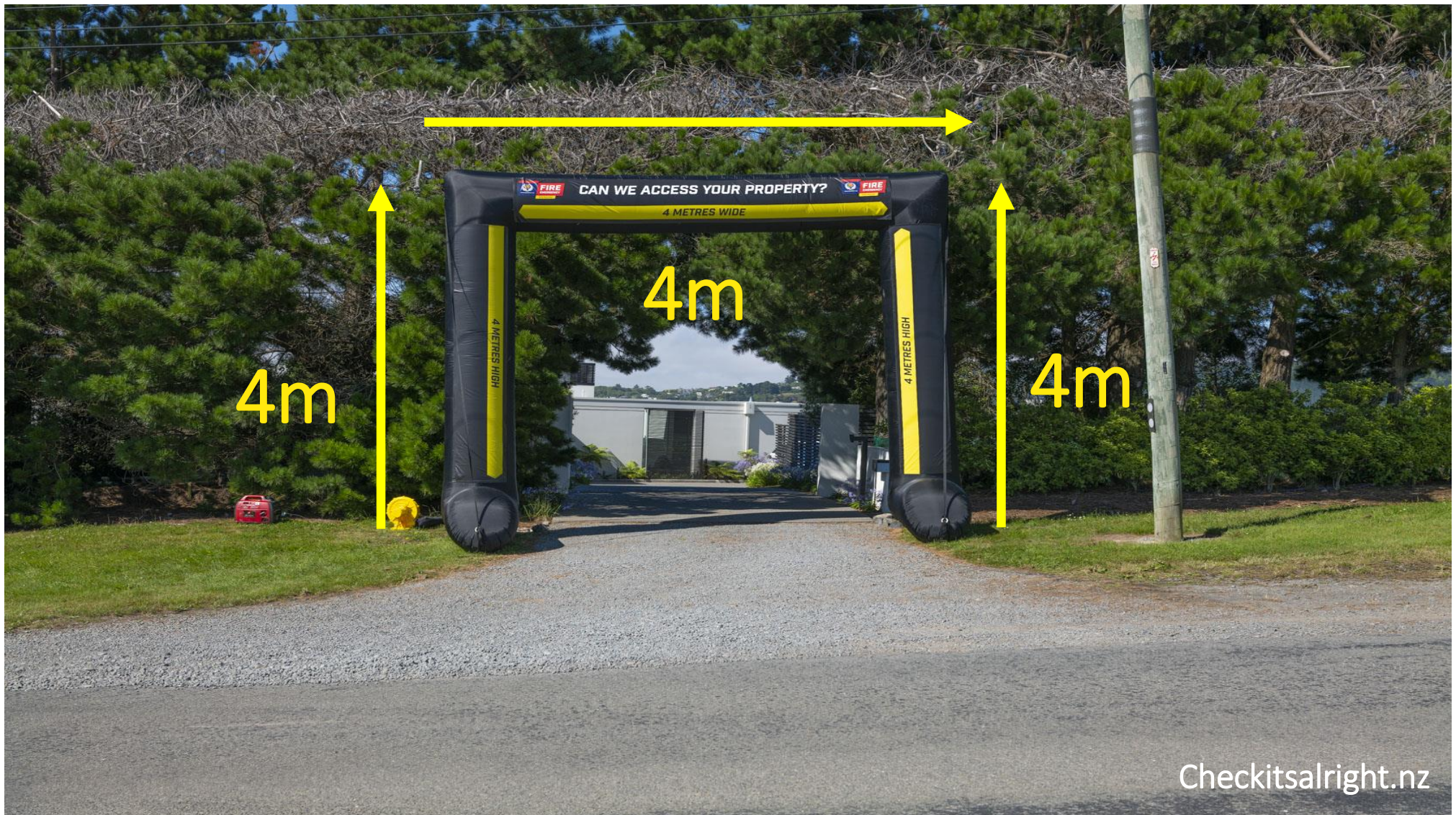
Access for Appliances



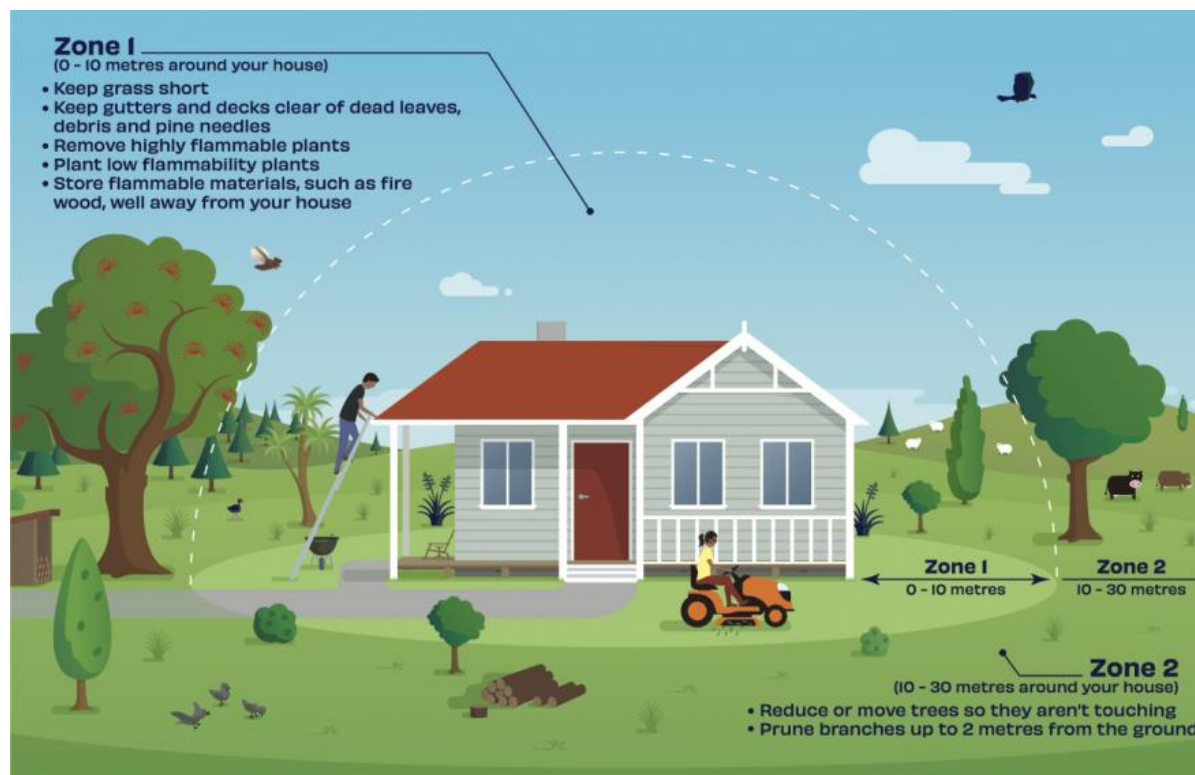
It is important that we have clear access to your property in case of an emergency.

If we can't get to you, we can't help you.

- Is your driveway or access way 4m wide by 4m high?
- Are there over hanging branches or large overgrown shrubs blocking the way?
- Do you have at least two ways out of your property?
- Do you have obstacles that may impede the trucks direct access ie; bridges, small turning areas, large outbuildings?
- A fire call will generally turn out upwards of 3 appliances to assess the situation, more resources can then be called for.



Defensible space around your home



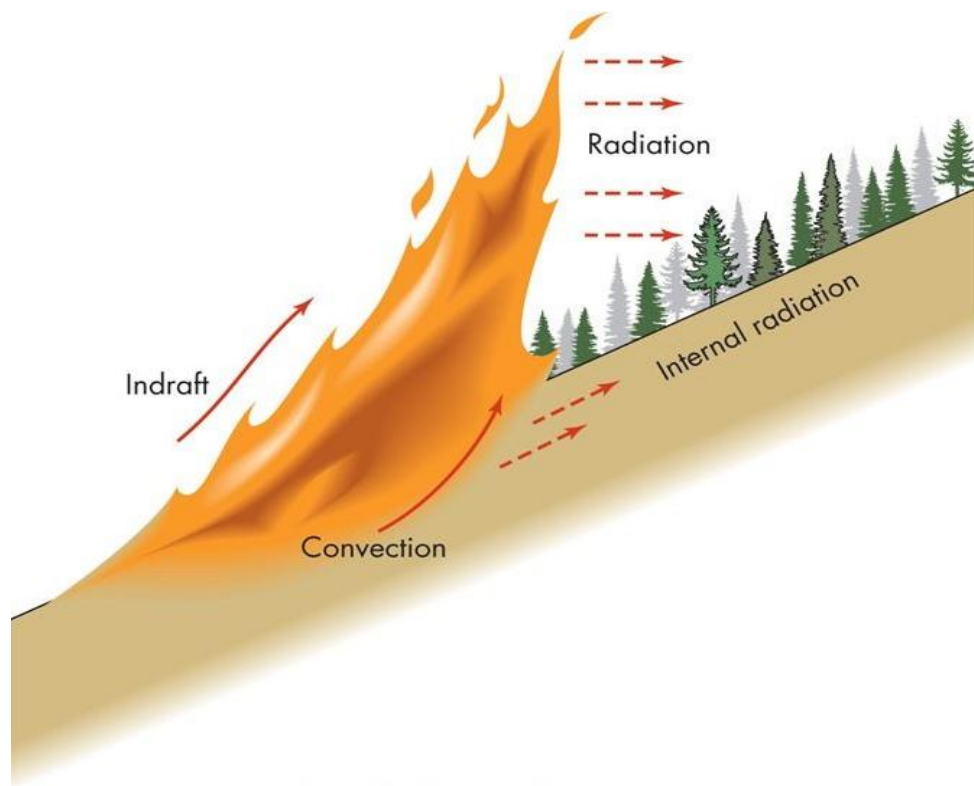
Whakarātonga Iwi – Serving Our People | fireandemergency.nz

Take these simple steps around your home to reduce the effects of fire on your property.

- Green breaks in a garden and surrounding property can help reduce impact of fire on the dwelling.
- Some plants are less flammable than others. Consider using these in the garden especially around the house.
- Think about outside structures such as wooden decks and pergolas and reducing the exposure to fire. Simply keeping these structures free from litter.
- Consider alternatives to bark and wooden mulch around the outside of the house. Pea straw is highly flammable when dry. Look to use alternatives within the defensible space around the house.
- Installation of sprinklers and irrigation around the house and property can help reduce the impact of a fire.

[Checkitsalright.nz](https://checkitsalright.nz) 4

Uphill Fires



Rates of Spread

Examples

Starting from level ground:

- 10° slope = rate of spread x2 (*speed*)
- 20° slope = rate of spread x4 (*speed*)
- 30° slope = rate of spread x6 (*speed*)

The opposite is true for downhill fires.

To keep your property as safe as possible consider planting low flammability plants along your boundary to slow an advancing wildfire.

Use of fire retardant

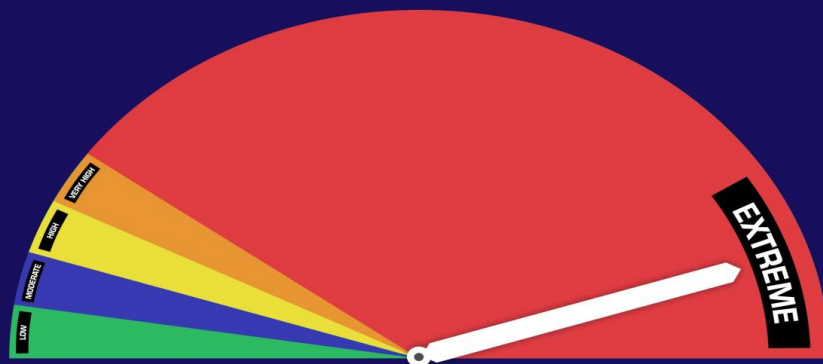
Fire Retardant is used extensively overseas to slow or completely prevent Wildfire spread.

- It's a simple ammonium phosphate chemical (basically fertiliser) that inhibits fire by robing it of oxygen right when heat impacts it on vegetation.
- It's been used for many years in NZ, just not widely until now.
- FENZ now has a growing National programme of equipment and trained staff in its use and application, with a unit and Team of 10 right here in Christchurch.
- It can be applied by Fixed wing Aircraft, Heli and from ground crews.
- It is safe. However in sensitive areas like waterways, Organic farms or known DOC preservation areas, we won't drop in those areas.



Fire Permits and Fire Seasons

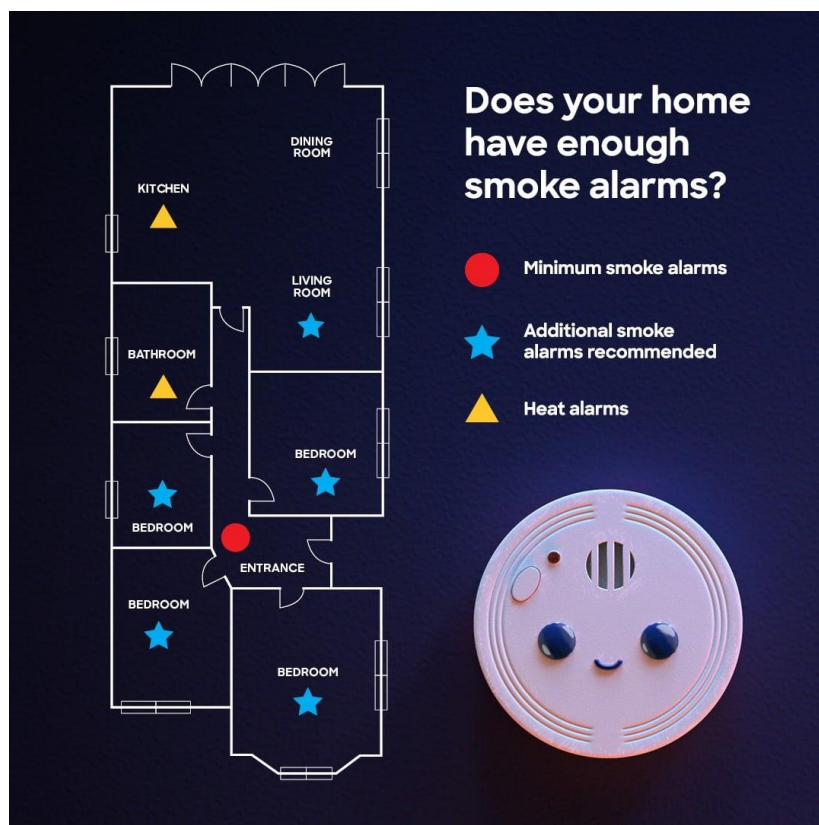
**IF YOU'RE NOT READY,
THE RISK IS ALWAYS
EXTREME.**



Before you light a fire, always check it's alright first by heading to our website first www.checkitsalright.nz

- Restricted season requires open air fires to have an approved permit.
- Fire permits are completed online and can be issued within 5 working days.
- Prohibited season is a total fire ban. **NO FIRES!**
- Hazardous activities that may be likely to start a fire can be prohibited for a period of time if the fire weather is going to be Extreme.
- Fire and Emergency – Canterbury Facebook page, Canterbury Emergency Civil Defence Facebook page have fire weather alerts out in the morning of an extreme fire danger day.
- Fire season changes are based on scientific weather indices which includes, Drought Code, Duff Moisture Code, Fine Fuel Moisture Code, Initial Spread Index, Temperature, Wind Speed etc.

Keeping the inside of your house safe



All properties should have working smoke alarms.

- These should be in every living space, including bedrooms and living rooms.
- Consider Heat Alarms for smokey, steamy or dusty areas like Kitchens, Bathrooms and Garages.
- Make sure you have an escape plan for your family. You can create one on our website www.escapemyhouse.co.nz
- Don't overload multiplugs.
- Clean lint out of the dryer after every use.
- Only charge devices on hard surfaces to reduce overheating.

Fire and Emergency NZ provide Home Fire Safety checks for your house. You can make contact us by calling 0800 693 473.

Evacuations during Wildfires



Whakarātonga Iwi – Serving Our People | fireandemergency.nz

Fire and Emergency may require an area to be evacuated due to the risk to life and to allow us to carry out fire attack operations safely.

- We will engage with NZ Police to undertake the evacuations of residents in a designated area.
- To ensure your safety, we ask that you leave quickly and only take with you a grab bag and any important items you will need. A grab bag should include things like;
 - Clothes
 - Water and snack foods (including baby and Pet food)
 - A portable phone charger
 - Copies of important documents and photo ID
 - Medication (enough for a couple of days)
- Depending on the duration of the wildfire event, Civil Defence may open an emergency centre.
- If you have stock on your property please let us know. If the wildfire is going to be a long duration event, we will work with Council Animal team and MPI to ensure your stock is cared for while the cordons are in place.

Checkitsalright.nz 9

Thank you for your attendance



Whakaratonga Iwi – Serving Our People | fireandemergency.nz



[Checkitsalright.nz](https://checkitsalright.nz) 10

177 Pūrau Avenue return by way of transfer to Te Hapū o Ngāti Wheke

*Te Pātaka o Rākaihautū Banks Peninsula
Community Board information session
23 September 2024*

Purpose of the engagement

- To **understand the communities and interested parties' views on the proposal** to revoke the reserve status and return the land to Te Hāpu o Ngāti Wheke (LGA section 78).
- To provide the community and interested parties **an opportunity to submit an official submission or objection** to the proposal (Reserves Act section 24 & 119).

Tactics summary

- Korero Mai (Letstalk.ccc.govt.nz) consultation webpage
- Public notice in the local paper (Reserves Act requirement)
- Direct mail to absentee owners
- Letterbox drop
- Emails to previous participants
- Kanohi te Kanohi/ face to face meetings with,
 - Pūrau Residents Group (28 September)
 - Diamond Harbour Reserves Committee (30 September *tbc*)
 - Local Rūnanga (on request)
- Contact person for any other requests

Information overview

- The proposal as outlined to the Community Board.
- Chronological account of historical events, historical correspondence and land mapping and, more recently, archaeological mapping.
- Legal process required and how the land would be cared for if returned
- The options considered
- Link to the Draft Coastal Hazards Adaption Plan engagement



Options considered

Preferred option

- Revoke the reserve status and return the land to Te Hāpu o Ngati Wheke

Other options considered:

- Reclassify as historic reserve and remain in Council ownership
- Do nothing
- Reclassify as historic reserve and establish a co-governance group to oversee management of the site.

Question that will be asked

- Do you support the proposal to revoke the reserve status and return the land to Te Hāpu o Ngāti Wheke?
- If yes – tell us why
- If no – what don't you like about the proposal?

Consultation dates: Thursday 3 October – Sunday 1 December

Presenters:

Claire Fletcher – Senior Engagement Advisor

Angus Smith – Manager Property Consultancy