

Christchurch City Council
MINUTES ATTACHMENTS

Date: Wednesday 18 September 2024
Time: 9.32 am
Venue: Council Chambers, Civic Offices,
53 Hereford Street, Christchurch

TABLE OF CONTENTS NGĀ IHIRANGI	PAGE
3.1.1. Public Forum - Water Cremation Aotearoa NZ	
A. Water Cremation Aotearoa NZ - Presentation to Council.....	3
3.1.2. Public Forum - Eco-Action Nursery Trust	
A. Eco-Action Nursery Trust - Presentation to Council.....	9
3.1.3. Public Forum - Gap Filler	
A. Gap Filler - Presentation to Council	18
9. Youth Portfolio Lead Report	
A. Youth Portfolio Lead Report - Presentation to Council	28



Resomator





Why?

Reduced carbon emission

Lower environmental
impact

Options

The water cremation process using Resomation

- Uses 95% water and 5% alkali (potassium hydroxide) to rapidly hydrolyse tissue, accelerated by heat at 150 deg C to speed up a process that nature achieves in years (as when a body is buried in soil).Typically 3-4 hours (using Resomation)
- It generates:
- (a) a sterile, DNA free, water consistency liquid principally of amino acids, sugars and soap that is suitable for release/recovery via the water cycle
- (b) Pure white ash (25-30% more than with flame)

What is returned to the family at the end of the process?



1. Pure White Sterile Ash
(Calcium Phosphate)



Goals

- Water cremation available at Christchurch Water Crematorium 418 St Asaph St, beginning 2025
- A high quality low carbon emission service
- Implant recycling
- Assimilate water cremation service within death care in Aotearoa, support and promote it
- Share our facility

Eco Action Nursery Trust

CC57147
2024



Thank you,
Christchurch City
Council, for
helping us so we
can help support
our community



Students from 26 schools, 2 community groups, and 3 retirement villages pot on, then plant out eco-sourced native trees into the Red Zone.



In 2024 the Trust organised 24,000 natives to be planted by students and their families, and donated 40,000 more to other planters.



Eco Action arranges
land to plant on
from CCC Parks at
QEII and Atlantis St



Students and the community
collaborate to plant and
maintain the site



Successful history of planting QEII Adventure Nature Trail

Successes

- Ribbonwood 3.5m tall
- Coprosma fruiting
- Flax flowering
- Bird habitat returns





School grown Natives planted out

2016 - 350 trees
2017 - 610 trees
2018 - 3,150 trees
2019 - 3,400 trees
2020 - 5,450 trees
2021 - 13,350 trees
2022 - 18,000 trees
2023 - 30,000
2024 - 60,000
projected
2025 - 60,000



Schools involved

- Tūāhiwi Kura
- Medbury
- Christchurch Boys' High School
- St Michael's Church School
- Burnside Primary School
- St Peters Primary
- Ao Tawhiti Climate Campus
- ChCh South Intermediate
- St Patrick's Primary
- Riccarton High
- SVA UC
- Richmond Community Gardens
- Charles Upham Rangiora
- Rangi Ruru
- Casebrook Intermediate
- Shirley Boys High School
- Avonside Girls High School
- Ouruhia
- Christ's College
- St Margarets
- Selwyn House
- Cathedral Grammar
- St Andrews College
- St Andrews College Prep
- Parkview Primary
- Christchurch Girls High

Thank you
from us all at
Eco Action
Nursery Trust



Sponsors involved

- CLS Canterbury Landscapes -potting mix and seedmix
- CCC Parks Community Partnership programme-Ranger support, logistics, mulch, land
- Dept of Corrections- plant services and maintenance
- Envirowaste- wheelie bins
- Isaacs Construction- road cones
- SBHS, Christ's College, Rangi Ruru, St Margaret's College -logistical, moral and financial support
- New Brighton Volunteer Fire Brigade- water
- School Partners- Land space, teacher support and water
- Fulton Hogan – Plant transport

Financial Summary -what value does Eco Action provide?

^CCC CFT
\$4,285
CCCTKK
\$61,400
TOT
\$66,000

actual
*estimated

	CCC Funding (\$ x 000)	Rata Funding (\$ x 000)	Other donations (\$ x 000)	Total	Budgeted surplus (deficit)	Volunteer labour contributed at \$23.65 / hr (\$ x 000)	Trees planted valued at \$5 each (\$ x 000)	Total value added (\$ x 000)
2020	20	5	3	28	0	153 [#]	27 [#]	180 [#]
2021	66 [^]	10	14	90	0	172 [#]	67 [#]	239 [#]
2022	15 [#]	0	21	37	0	180 [*]	93 [#]	273 [#]
2023	25 [#]	0	16	41	0	224 [*]	150 [#]	374 [*]
2024	25 [#]	0	21 [#]	46	(28)	228 [*]	320 [*]	548 [*]
2025 [*]			21 [#]	21	(60)	228 [*]	320 [*]	548 [*]

Grant funding support is leveraged 10 fold by in-kind support from volunteers
Students and planters report increased feelings of worth and wellbeing from being involved.

Social Value - What does the Eco Action program provide our youth community?

- Gaining practical horticultural skills.
- Building community involvement and participation.
- Building a sense of Place by improving amenity and wildlife habitat.



- Improving our quality of life in Christchurch Ōtautahi.
- Tackling the Climate Emergency through plants sequestering greenhouse gasses.
- Improving personal mental health by improving wellbeing.





THANK YOU!! 2021 - 2025

ŌTAUTAHĪ CHRISTCHURCH PAE TĀKARO PLACE OF PLAY



64 WAYS ~~X~~€ — OF BEING













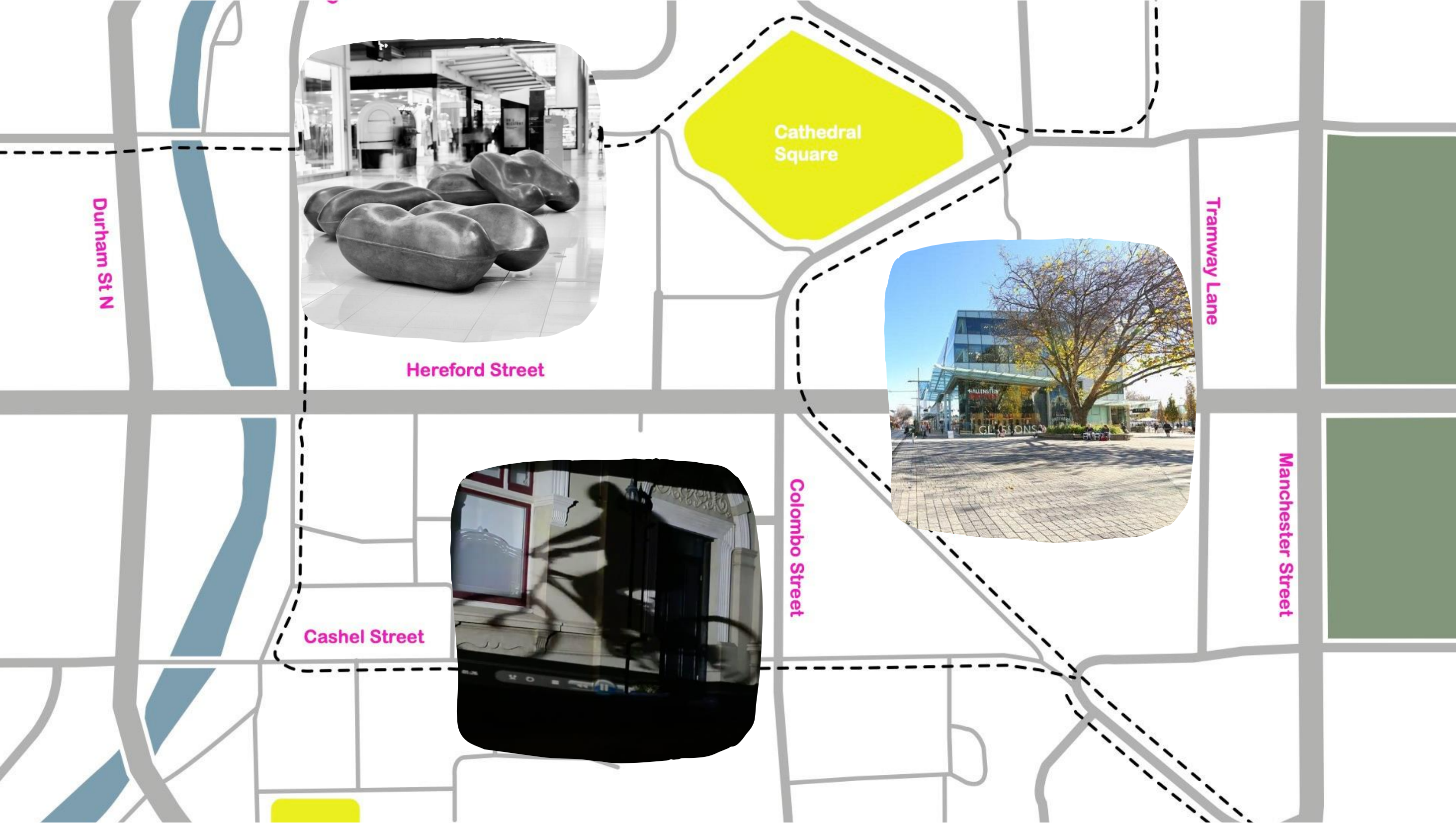
Te Kōrero Tākaro

COM IN MON

Our
Stories

PAE
TĀKARO
PLACE OF PLAY

GAP
FILER



Boost Ōtautahi Is Back

BOOSTED

If you're a Christchurch
Arts Organisation needing
project funding, register at
Boosted.org.nz or email us

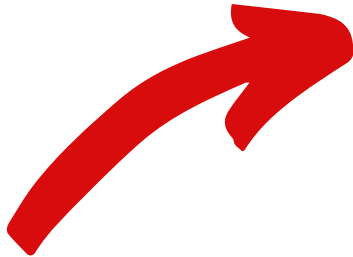
Made possible by our generous
funding partners:



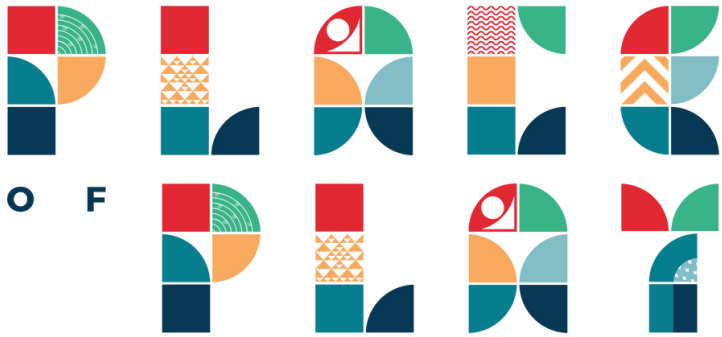
THE ARTS
FOUNDATION
TE TUMU TOI

BOOSTED

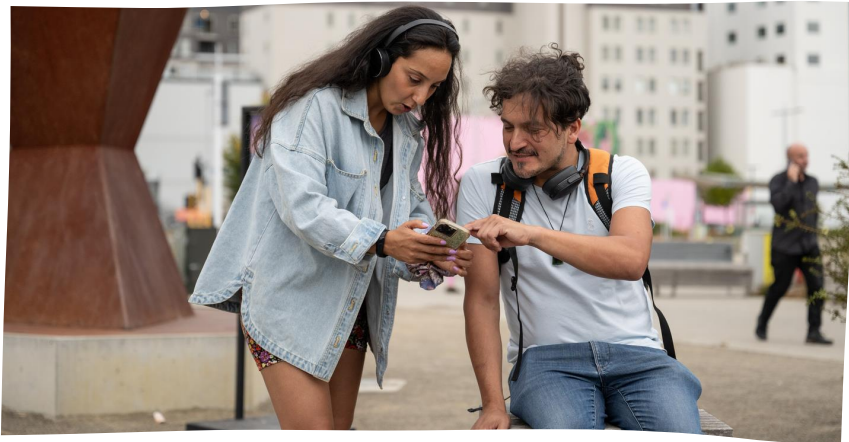
38% - \$1,920 of \$5,000 raised - 15 days left...



P A E T Ā K A R O



kate@gapfiller.org.nz
0204 088 7724



Youth Portfolio Lead Report

Presented by:

Councillor Harrison-Hunt – Youth Portfolio Lead

18 September 2024

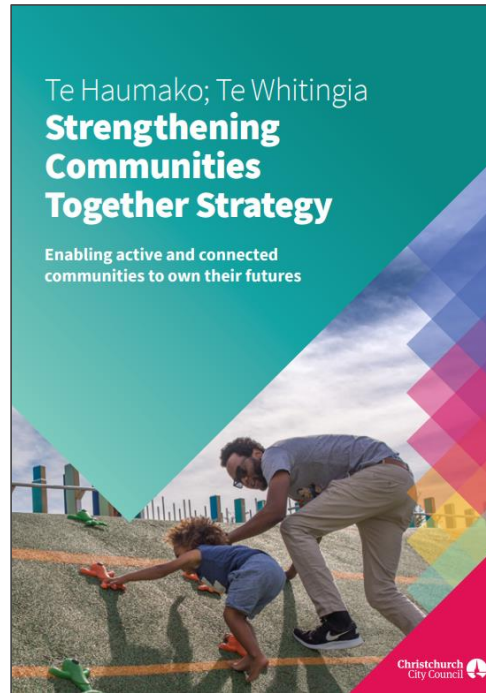
Youth Demographic

Youth are defined as **12-24 years** old, making up **15%** of NZ's population.

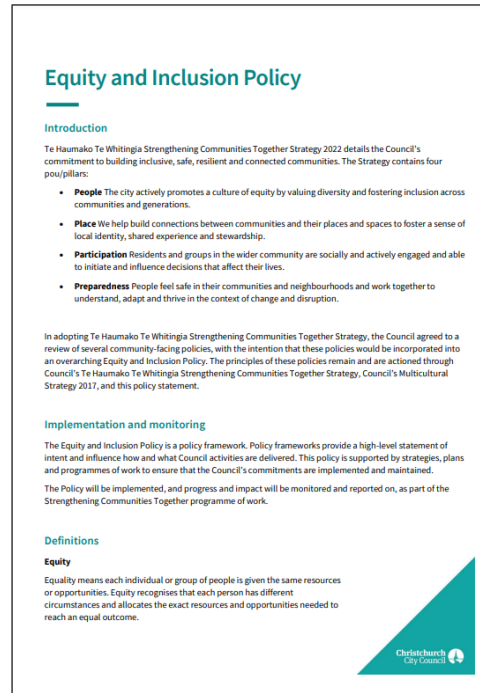
76,200 aged 10-24 in Christchurch.
(**19%** of the city's population)



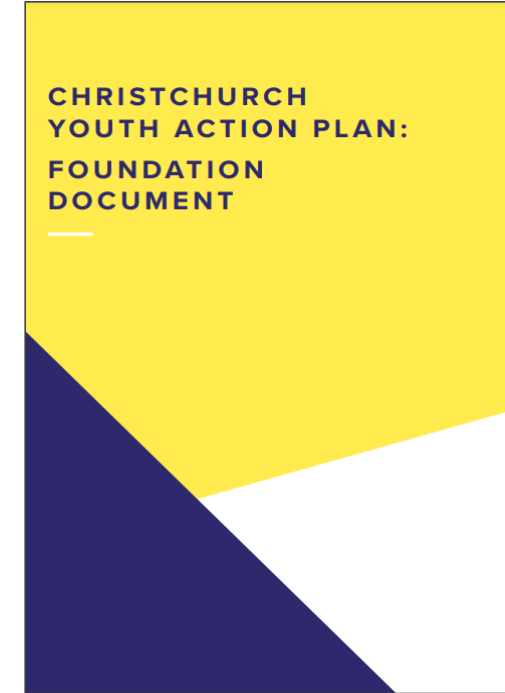
Guiding documents



(2022-2023)



(2024)



(2017)

Metropolitan Events, Organisations and Providers

The Christchurch Youth Council (CYC)

- Memorandum of Understanding
- Youth Takeover Survey
- Civics education



Rerenga Awa / Canterbury Youth Workers Collective NZ

- A range of networks
- Co-governance model
- ReVision youth audits



SS4C / School Strike 4 Climate Ōtautahi

- Climate Action strike



Metropolitan Events, Organisations and Providers

Youth Hub Christchurch / Youth Hub Trust

- Stage One opening soon
- Partnership with youth sector



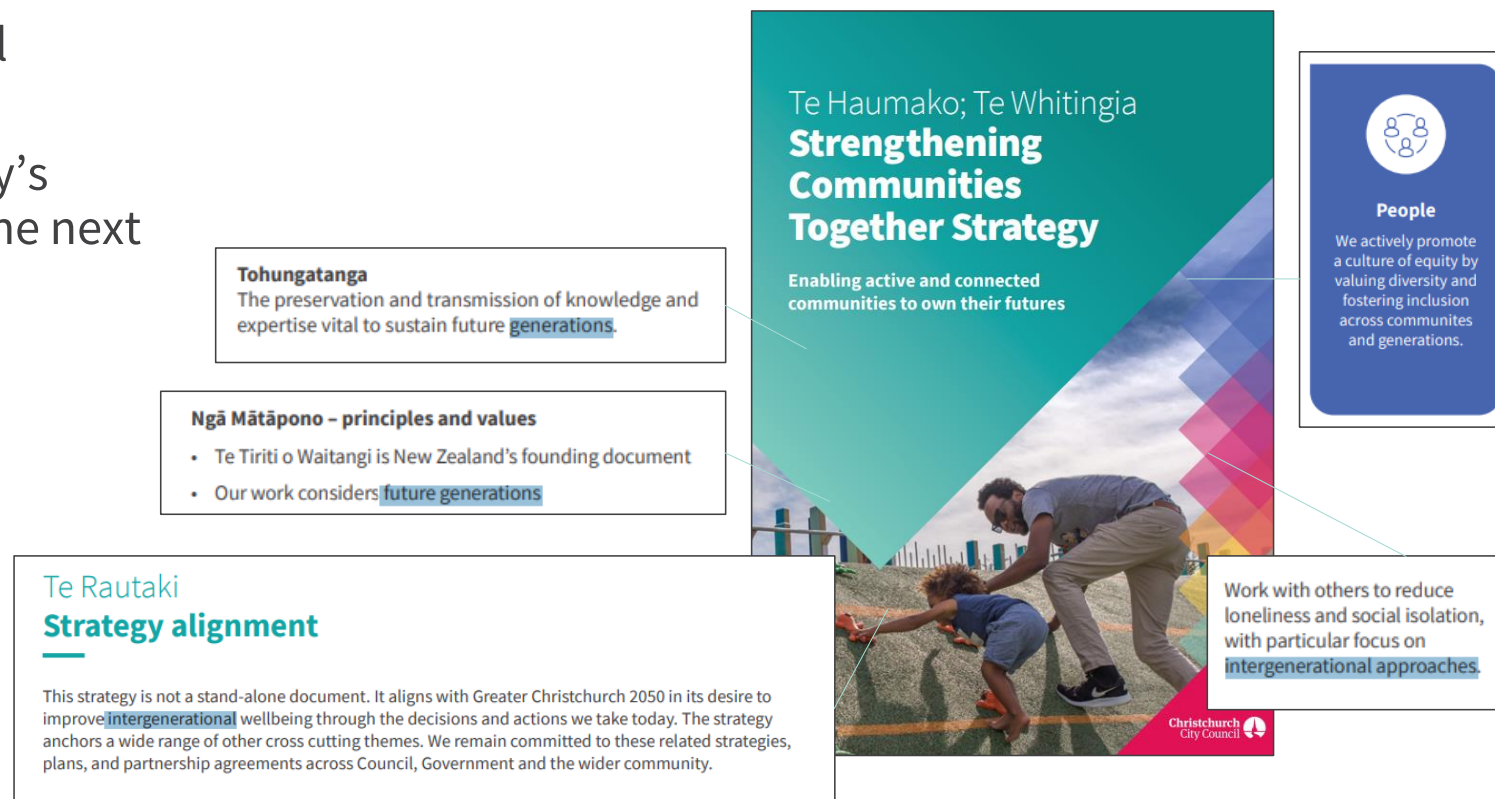
YCD / Youth & Cultural Development

- FRESH events
- The Igloo, youth hub

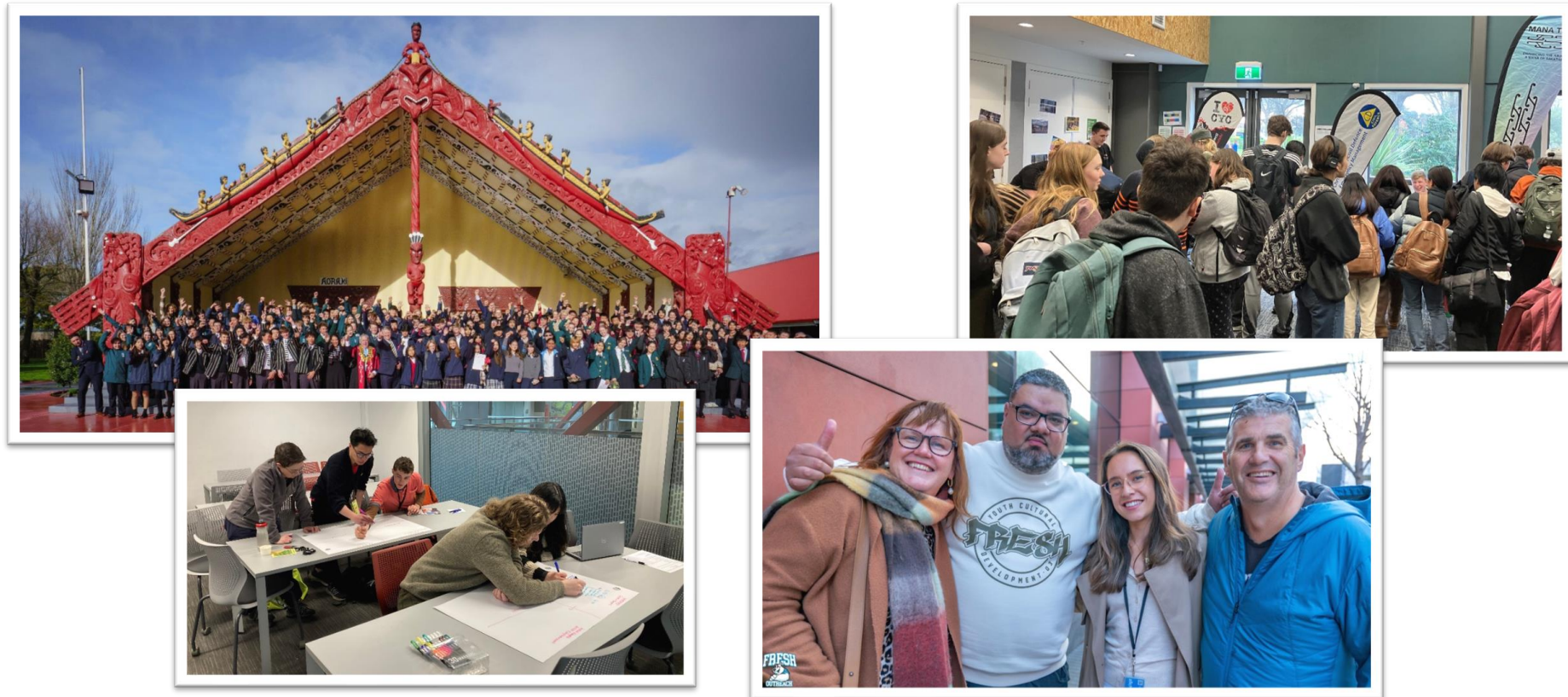


Intergenerational Fairness

- Intergenerational Fairness Model
- Fairness for today's generation and the next
- Evidence-based decision-making



Events attended



Community Board insights



Across the community boards, the Council actively supports youth-focused initiatives through **funding, resources, and partnerships.**

Growing youth leadership and civic participation.

Challenges include geographic and financial barriers, lacking support systems for youth, difficulties for youth orgs to secure funding and qualified staff.

Increased Strengthening and Communities Funding towards youth-initiatives.

General state of the sector

- Central Government actions
- Royal Commission of Inquiry into Abuse in Care
- Sense of safety
- Tackling phone use
- Aotearoa Youth Declaration



The next 6 months...

Ngā mihi
Thank you