

**Waitai Coastal-Burwood-Linwood Community Board
Information Session/Workshop
MINUTES ATTACHMENTS**

Date: Monday 12 August 2024
Time: 2.49pm
Venue: Boardroom, Corner Beresford and Union Streets,
New Brighton

TABLE OF CONTENTS NGĀ IHIRANGI	PAGE
2. Marine Parade Street Renewal Project - Consultation update	
A. Marine Parade Street Renewal Project - Consultation Update Presentation.....	3

New Brighton Marine Parade Street Renewal Project

Consultation update

12 August 2024

Project Objectives

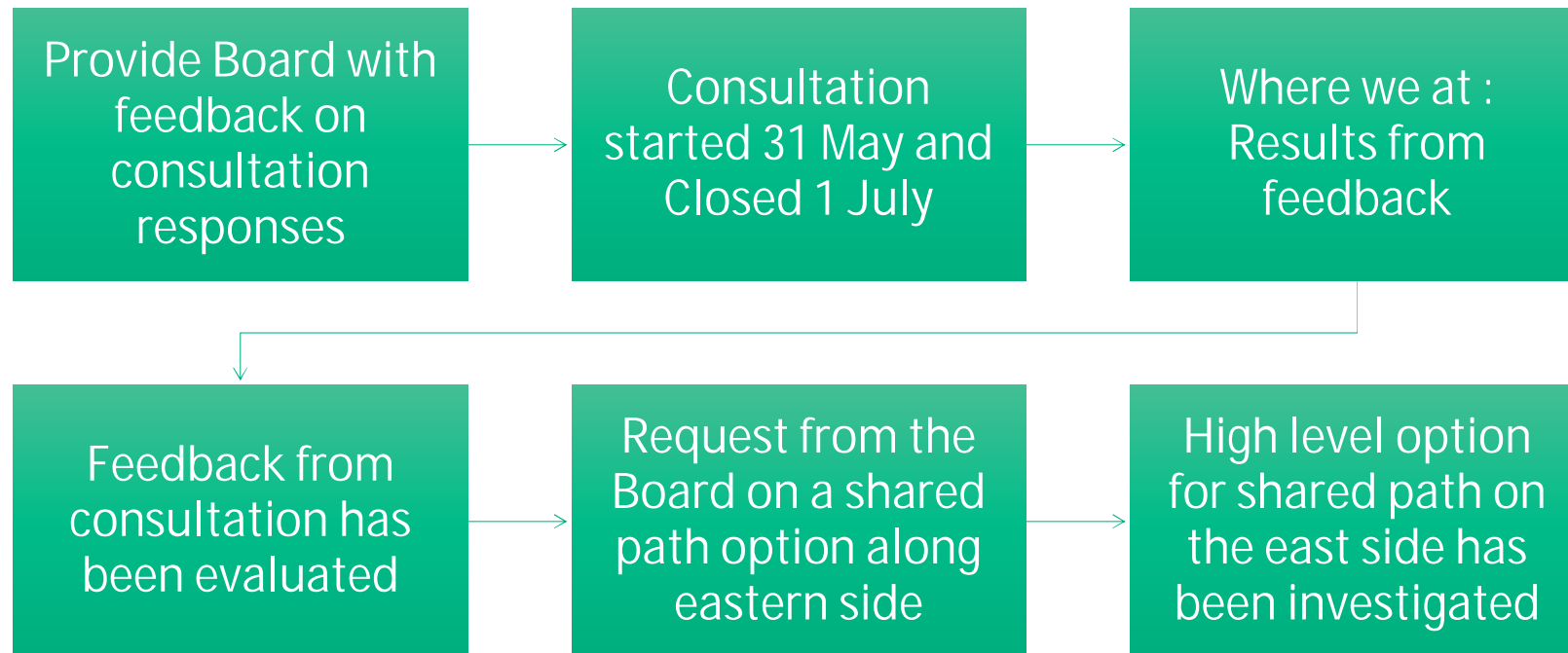
Agreed by Community Board on 12 September 2022

- Section of Hawke Street to 187 Marine Parade – remove the existing pavement and replace with a new pavement structure to support new asphalt concrete (AC) surfacing. Assess footpath condition.
- Lonsdale Street to 142 Marine Parade – replace the kerb and dish channel with kerb and flat channel. Assess footpath condition.
- Investigate options for cycle facility.
- Address resident concerns around speed.
- Upgrade intersection of Hawke Street and Marine Parade.

Secondary objectives if funding permits

- 187 Marine Parade to Lonsdale Street – currently do nothing in this section. If there is surplus funding and agreement from the project team and Community Board, investigate removing the existing pavement and replacing with a new pavement structure to support new asphalt concrete (AC) surfacing.
- 142 Marine Parade to Bowhill Road – a small area of new pavement near the intersection of Bowhill Road. Assess footpath condition.

Today's purpose



Option A

- 185 metres of asphalt renewal from Hawke Street to 187 Marine Road
- Replace deep-dish kerb and gutter with flat gutter between Lonsdale Street to 142 Marine Parade
- Pedestrian refuge Island on Hawke Street at the intersection of Marine Parade
- Pedestrian island at the entrance to the New Brighton Beach Car Park
- Zebra crossing on Marine Parade near the intersection of Hawke Street
- Cost estimate \$4M
- Loss of approximately 2 car parks

Option B

- 185 metres of chipseal renewal from Hawke Street to 187 Marine Road.
- Replace deep dish kerb and gutter with flat gutter between Lonsdale Street to 142 Marine Parade
- Painted cycle lanes on each side of the road
- Seven safe speed platforms with pedestrian crossings
- One speed hump
- Pedestrian refuge island on Hawke Street at the intersection of Marine Parade
- Pedestrian refuge island at the entrance to the New Brighton Beach Car Park
- Improved the pedestrian island on Marine Parade near Bowhill Road
- Zebra crossing on Marine Parade near the intersection of Hawke Street
- Cost estimate \$4.5M
- Loss of approximately 101 car parks

Parking availability map









Parking bays along Marine Parade



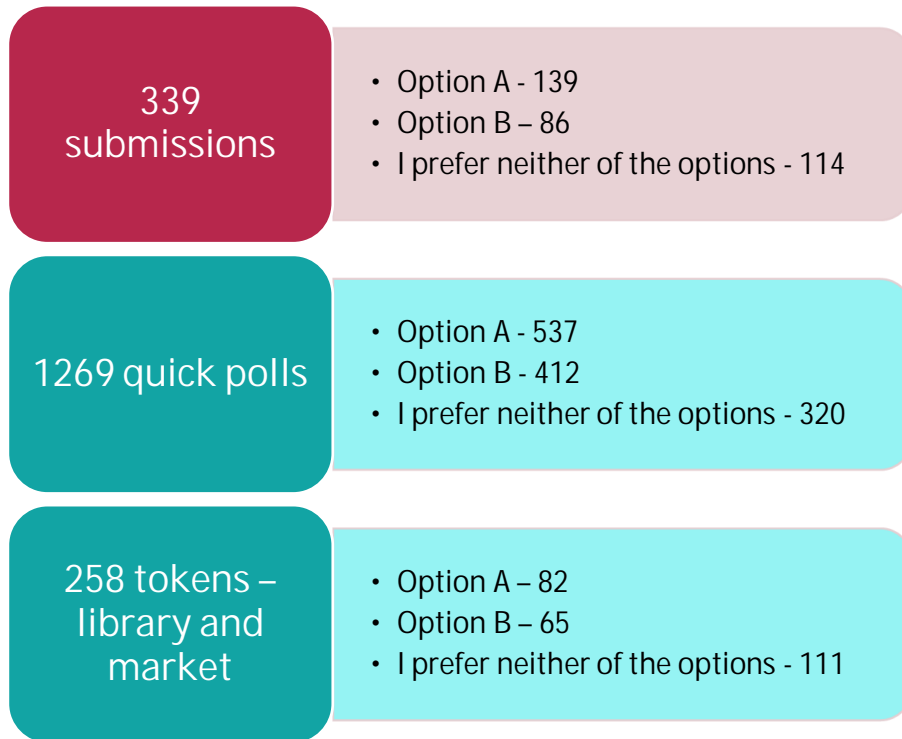
- Parking availability along the parking bays from Rawhiti Avenue to Bowhill Road.
- Cars can park in these bays however, cannot stay overnight unless they are a self contained.

Consultation feedback

11 submitters - Remove the freedom camping bays to create more car parks.

There was a lot of general comments at the New Brighton Market day regarding the parking bays.

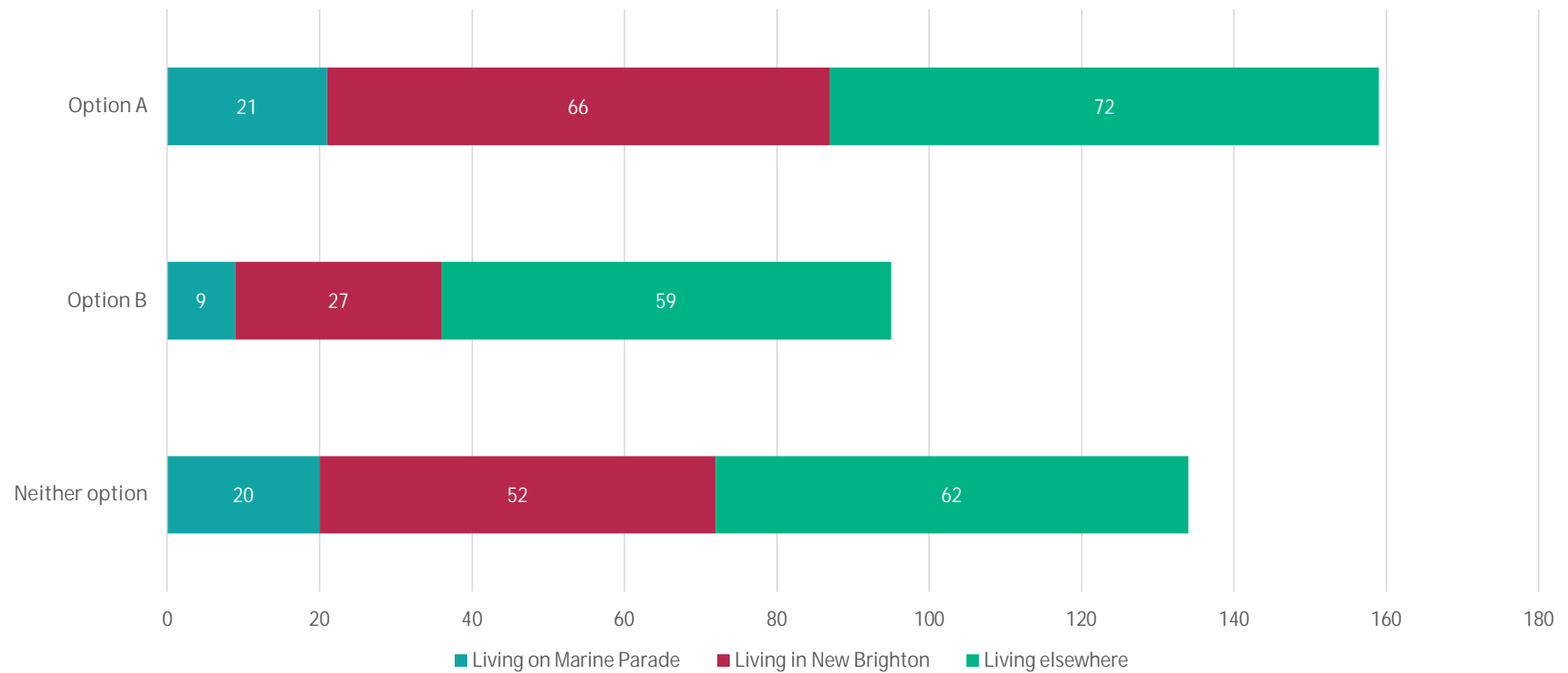
Consultation summary



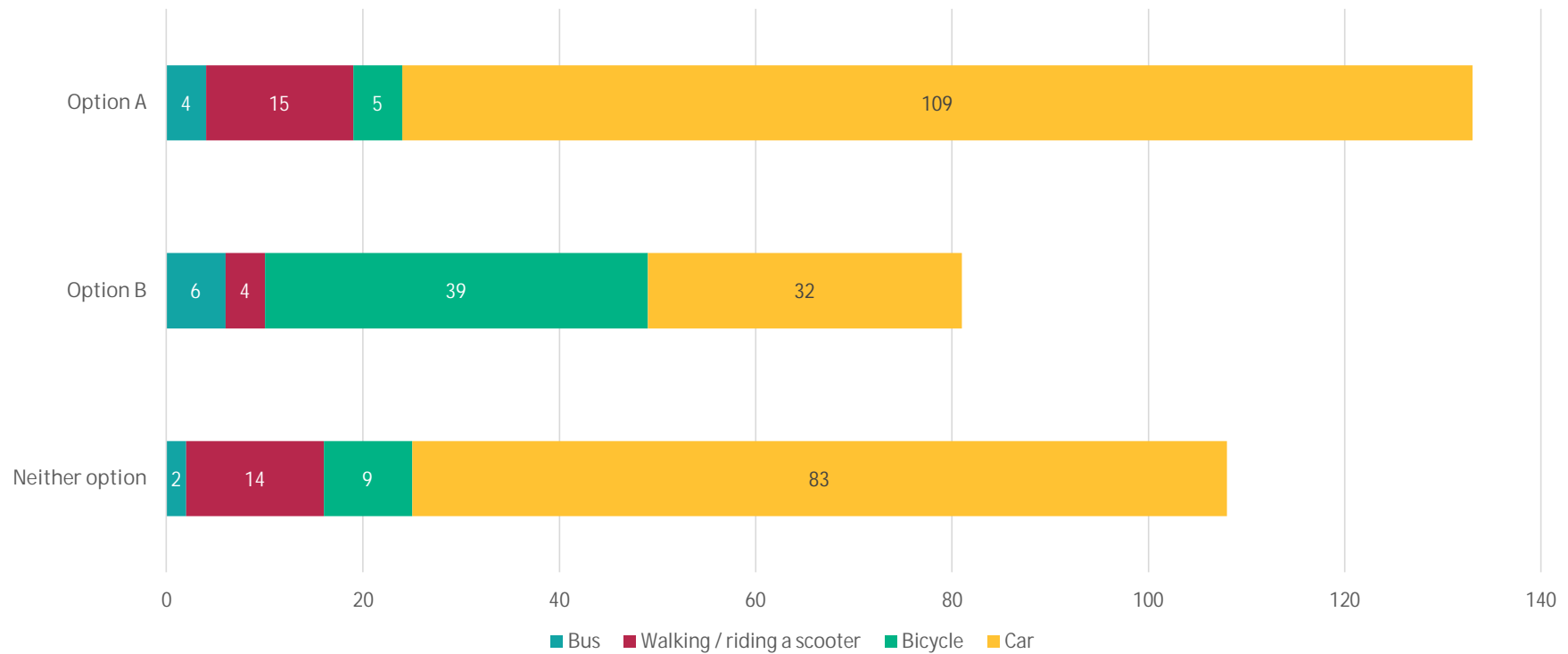
Organisations

Option A	Option B	Neither option
<ul style="list-style-type: none"> • Renew Brighton • Christchurch Archery Club • Canterbury / West Coast AA District Council • Eastern Community Sport and Recreation 	<ul style="list-style-type: none"> • New Brighton Residents Association • Greater Ōtautahi • Spokes Canterbury • Disabled Persons Assembly 	<ul style="list-style-type: none"> • Salty Hair & Co • New Brighton Regeneration Project

Results by area



Results by travel type



Thematic analysis – Option A

<i>What people liked</i>	<i>What people didn't like</i>
<ul style="list-style-type: none">• Retains car parking (66)• Pedestrian islands (43)• Pedestrian crossing at Hawke Street intersection (42)• Asphalt (32)• Cost effective (15)• Improved kerb and gutter (12)	<ul style="list-style-type: none">• Car parking removal (43)• Does not address cyclist issues / safety (39)• Not cost effective (35)• Does not address pedestrian safety (20)

Thematic analysis – Option B

<i>What people liked</i>	<i>What people didn't like</i>
<ul style="list-style-type: none">• Cycle lanes (56)• Pedestrian safety at intersections (44)• Pedestrian islands (22)• Speed platforms (21)• Reduced speed limit (18)	<ul style="list-style-type: none">• Car parking removal (156)• Speed platforms (33)• Cycle lanes (32)• Cost (23)• Chipseal (19)• Does not address cyclist issues / safety (14)

Thematic analysis – alternatives proposed

- Nothing wrong with street / Don't progress any option (68)
- Develop alternative option (23)
- Upgrade existing walking/cycling path on east side of Marine Parade (12)
- Remove freedom camping bays to create more car parks / space for flexibility (11)
- Repair the current layout (6)

Based on consultation feedback

What we heard

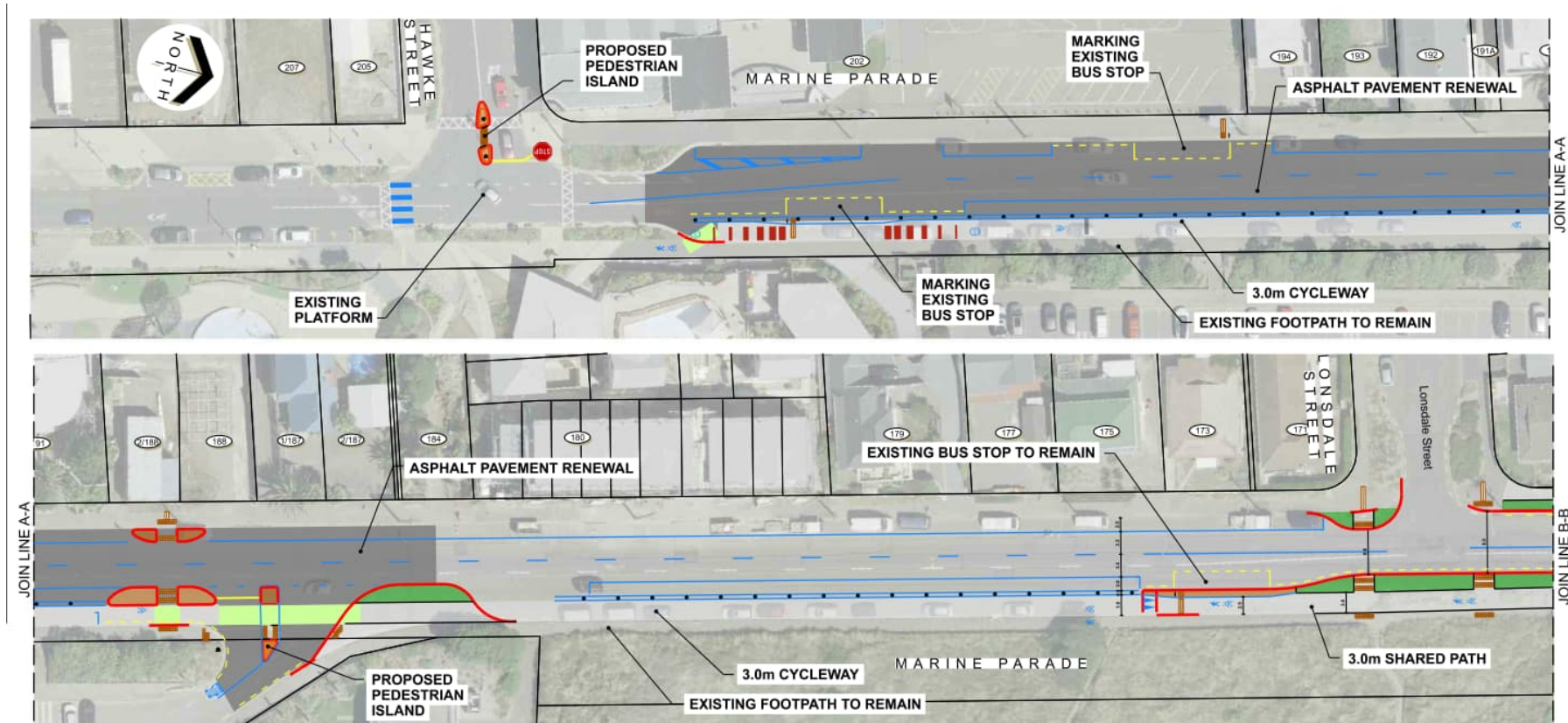
- Retain carparking (199)
- Install cycleway along Marine Parade (56)
- Address current cyclist issues - safety and accessibility (39)
- Upgrade shared path along beach side of Marine Parade (12)

The Community Board requested a third option based on consultation feedback.

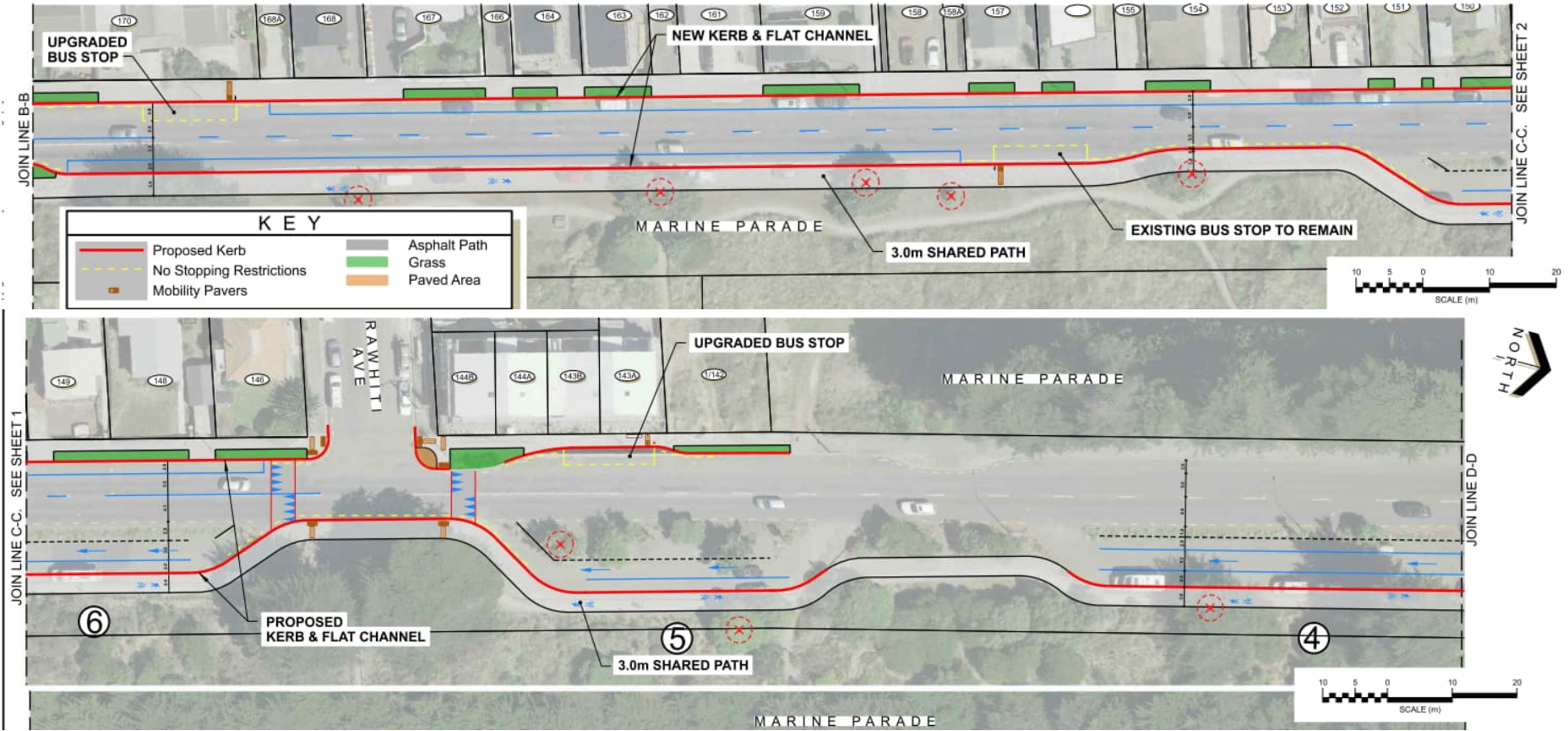
Staff have completed a high-level desk-top analysis using existing survey data to develop:

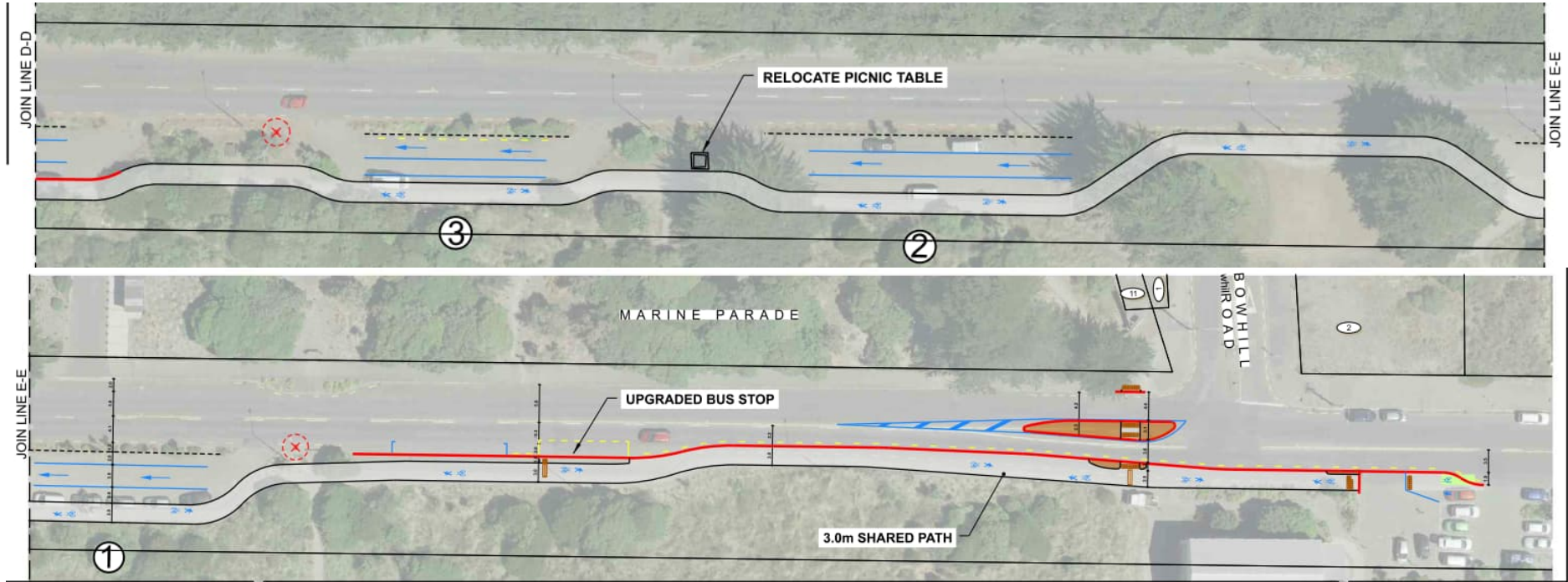
- A bi-directional cycleway from Hawke to Lonsdale and,
- A shared path from Lonsdale to Bowhill.

Proposed bi-directional cycleway – Hawke to Lonsdale



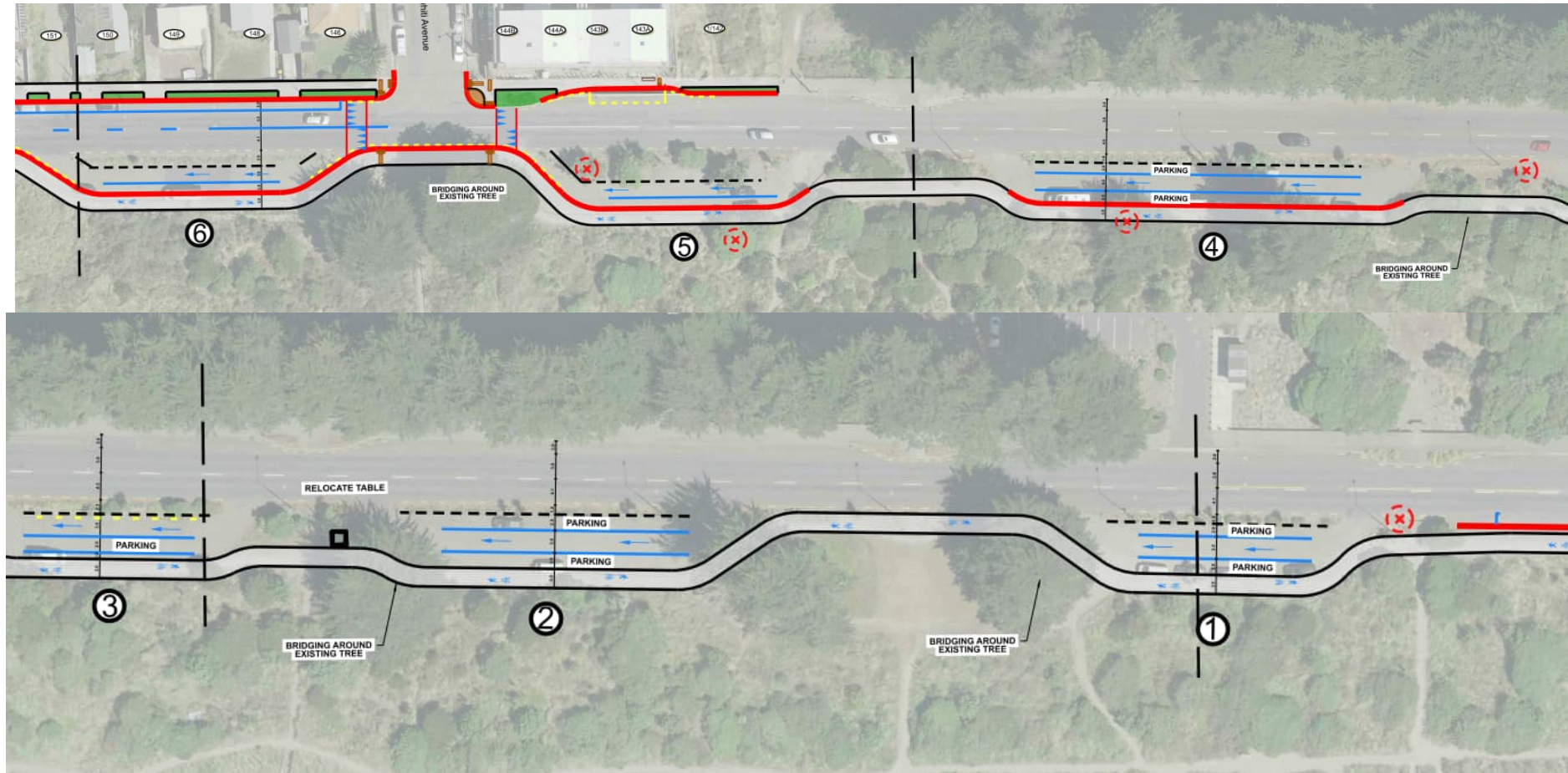
Shared path – Lonsdale to Bowhill





Proposed bi-directional cycleway

- This bi-directional cycleway has not been fully investigated and is at very early concept stage. This work has been undertaken through a desk-top analysis and a site visit.
- The Board will need to provide staff a steer on this development.
- This option will result in parking loss along the eastern side of the parking bays (closest to the sand dunes) and removal of trees.
- High-level estimate \$1.6M.



Next steps

- Consultation on the bi-directional shared path option if Board steer is given today.
- Staff will need to value engineer and design detail for this option before returning to the Board.
- Review current timelines for this project.

Questions?