

**Waihoru Spreydon-Cashmere-Heathcote Community
Board Information Session/Workshop
MINUTES ATTACHMENTS**

Date: Thursday 25 July 2024
Time: 4:30 pm
Venue: Boardroom, Beckenham Service Centre,
66 Colombo Street, Beckenham

TABLE OF CONTENTS NGĀ IHIRANGI	PAGE
2.1. Open Forum - Kia Ora Addington - Neighbourhood Building Project Update	
A. Kia Ora Addington neighbourhood project presentation	3
2.2. Skate Park Sumner	
A. Skate Park Sumner - Supporting document	12
B. Skate Park Sumner - Design changes	13
4. Richmond Hill Road - Proposed No Stopping Restrictions	
A. Richmond Hill road presentation	14
3. Good-to-go ways to get to school	
A. Good-to-go ways to get to school presentation	21



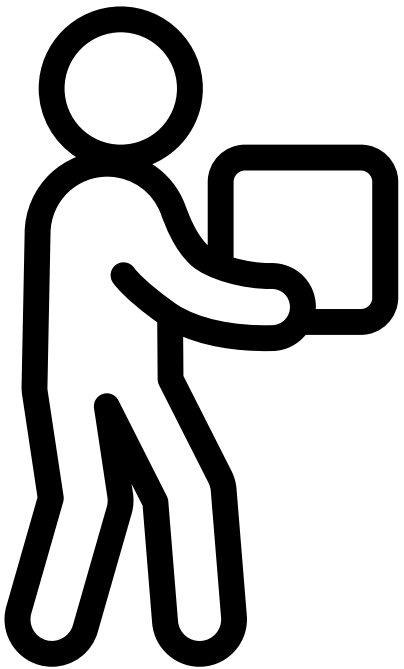
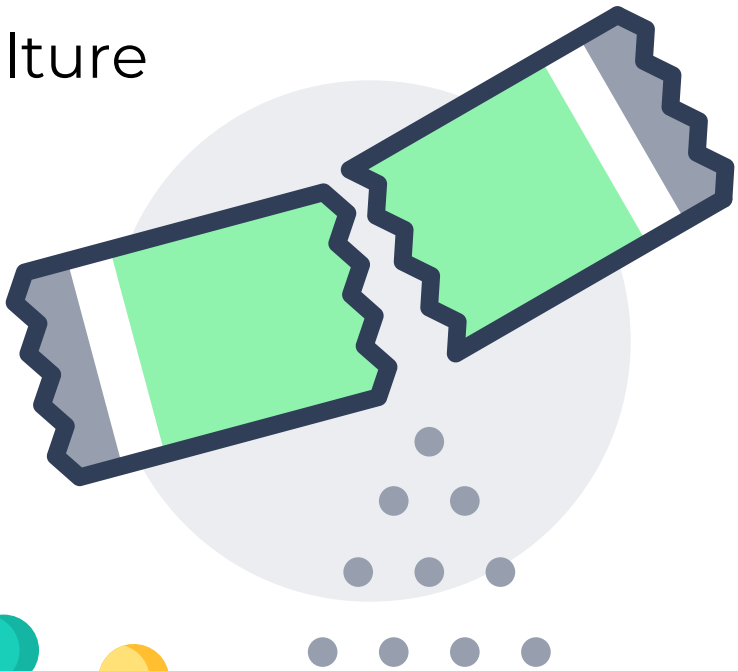
Addington Neighbourhood Project

Sharing with to Waihoru Community Board
July 2024

NEIGHBOURS
AOTEAROA



participation culture



NEIGHBOURS
AOTEAROA

Ripple effects of connection

Kia Ora Addington celebration night, early
March 2024 at Mānuka Cottage

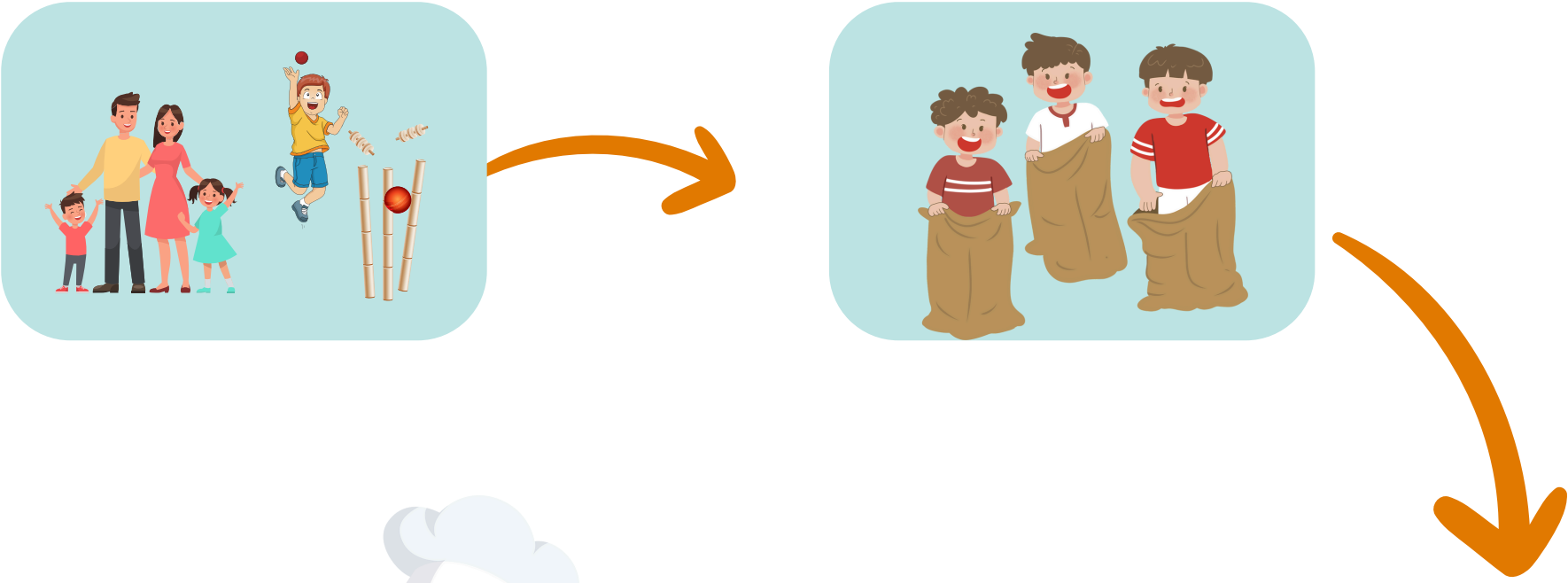


NEIGHBOURS
AOTEAROA

Park games activity at Addington Park - Late March



NEIGHBOURS
AOTEAROA



**Tamariki ‘Garden to Table’ activity at
Parlane St Community
Garden - July**

NEIGHBOURS
AOTEAROA



**‘Dosa & chatni’ cooking
activity - Booked for
August**

NEIGHBOURS
AOTEAROA

Stats at a glance

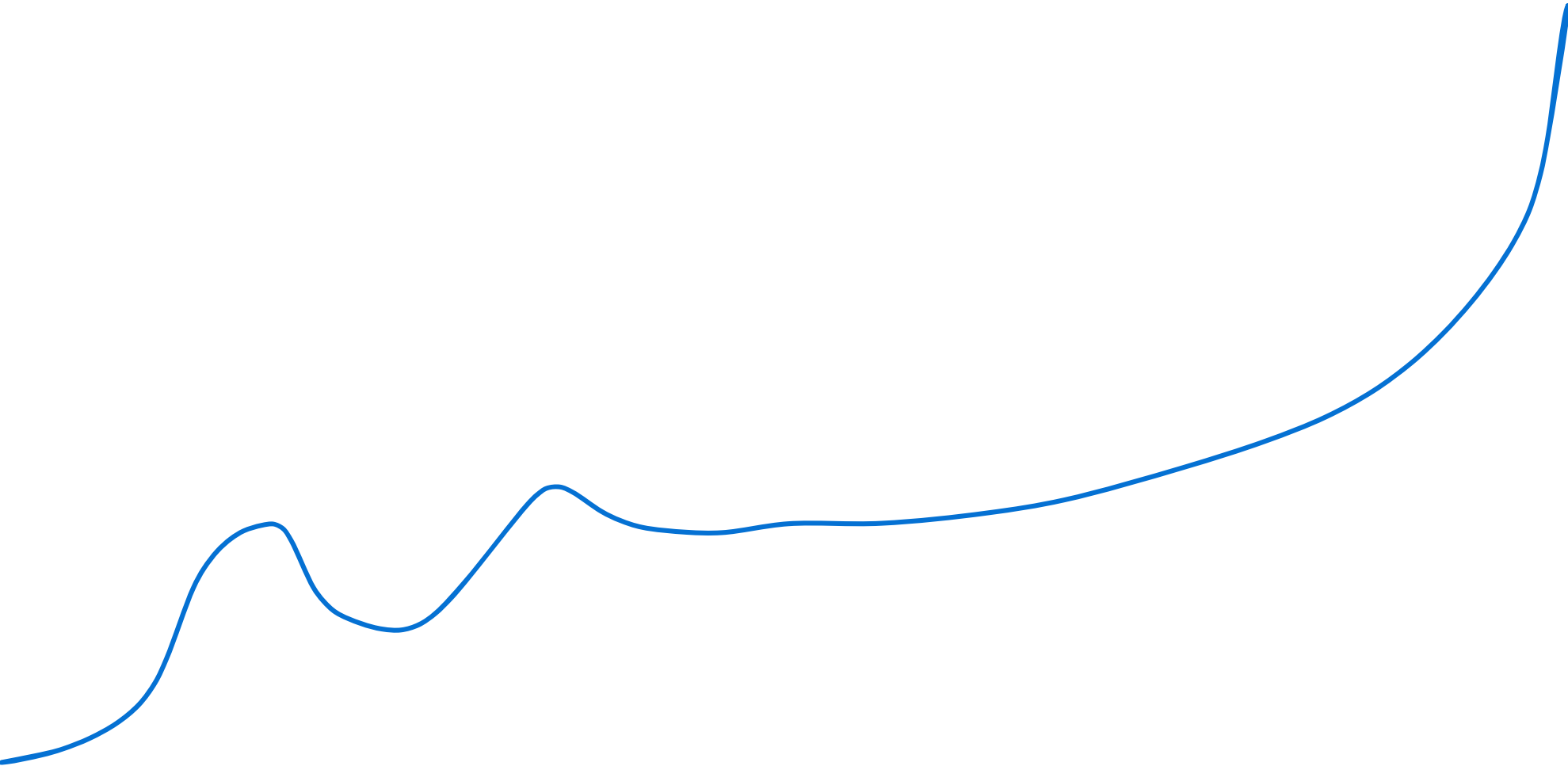


632 recorded attendees spread across 47 events, activities or hui *

8 people have now led or started a activity for the first time*

***Some events we co-created, some we initiated, some we resourced. Total attendance numbers are from the start of the project to the 11th of June, 2024.**

NEIGHBOURS
AOTEAROA



Any patai?



To: Waihoru Spreydon – Cashmere – Heathcote Community Board
From: Mike Sleigh, Committee Member, Sumner Green and Skate
cc: Bridie Gibbings, Manager Operations, Community Parks Development
Date: 25 July 2024
Re: **Approval to Minor Design Variations to Sumner Skate Park Design**

The long-awaited Sumner Skate Park & Village Green commenced construction in late May this year. The contractor, Hunter Civil is making good progress.

During construction, the following skaters have noticed two small changes that would improve the skate-ability of the Park;

- Damian Doyle - 25 years skating, builder of the existing wooden Sumner Skate ramp
- Will Giles - 30 years skating, national competitor
- Sean Ritchie - represented NZ in international skating competitions
- Will Bartlett - high level skater – sponsored by Embassy Skate Shop
- Otautahi Skateboard Association - 8 committee members

The changes have been discussed with the Hunter Civil and the Council Manager, Bridie Gibbings. Hunter Civil has advised there will be little if any change in the cost and it would have no effect on timing. However, a decision on the changes needed to be communicated to Hunter Civil within the next week.

Bridie advised that given the Community Board approved the current plans for the Skate Park then you should be advised of any changes.

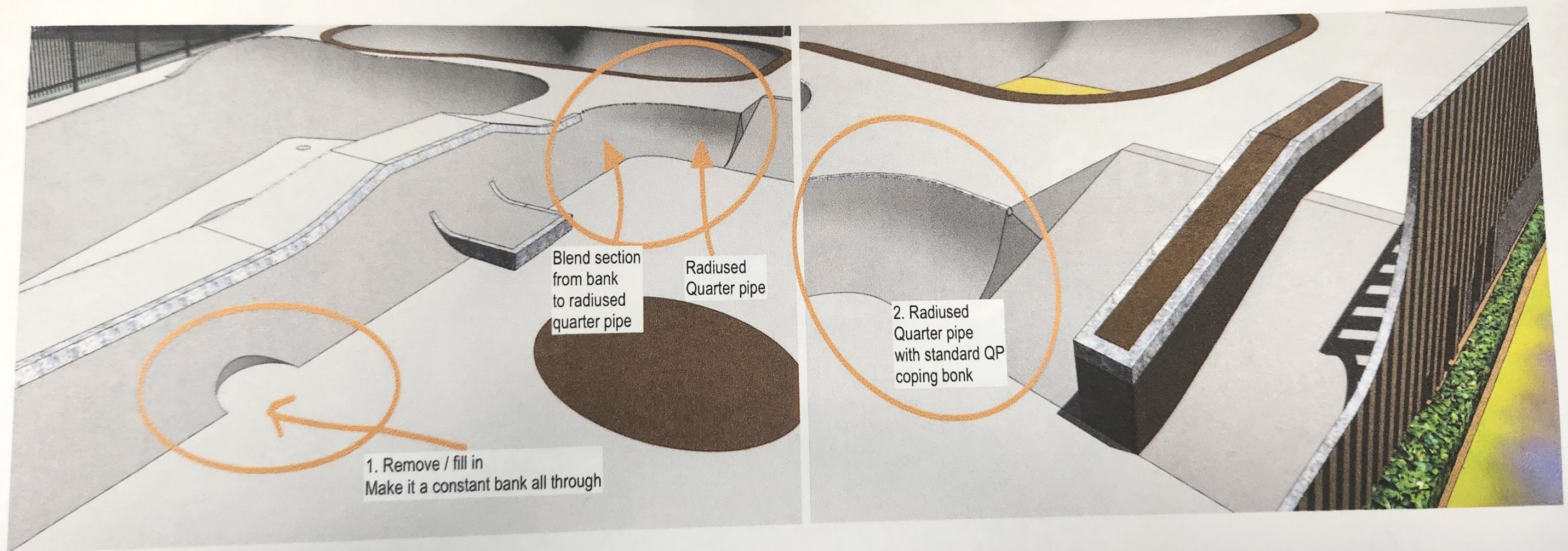
The changes are as follows – and shown on the attached plan;

1. **remove the small channel gap**
 - will avoid the need for an extra amount of textured concrete
 - requires less formwork
2. **change the steep flat bank to a quarter-pipe shape**
 - same volume of concrete
 - no additional formwork

As a result, we **request** that Community Board note and/or approve these changes to the plan subject to any potential construction cost variations being approved by the Manager Operations, Community Parks Management.

Thank you for your time.

Requested minor design changes



54-70 Richmond Hill Road

Pedestrian Safety and Parking Restrictions

1



Issues:

- No formal footpath on this section – poor connectivity
- Parked vehicles and other obstructions (such as power poles) impeding access for pedestrians
- Narrow Road width - 6m total in some areas (including footpath)
- Increased traffic – Average Daily Traffic Volume - 999 vpd (Feb 2024), 881 vpd (March 2017)



3

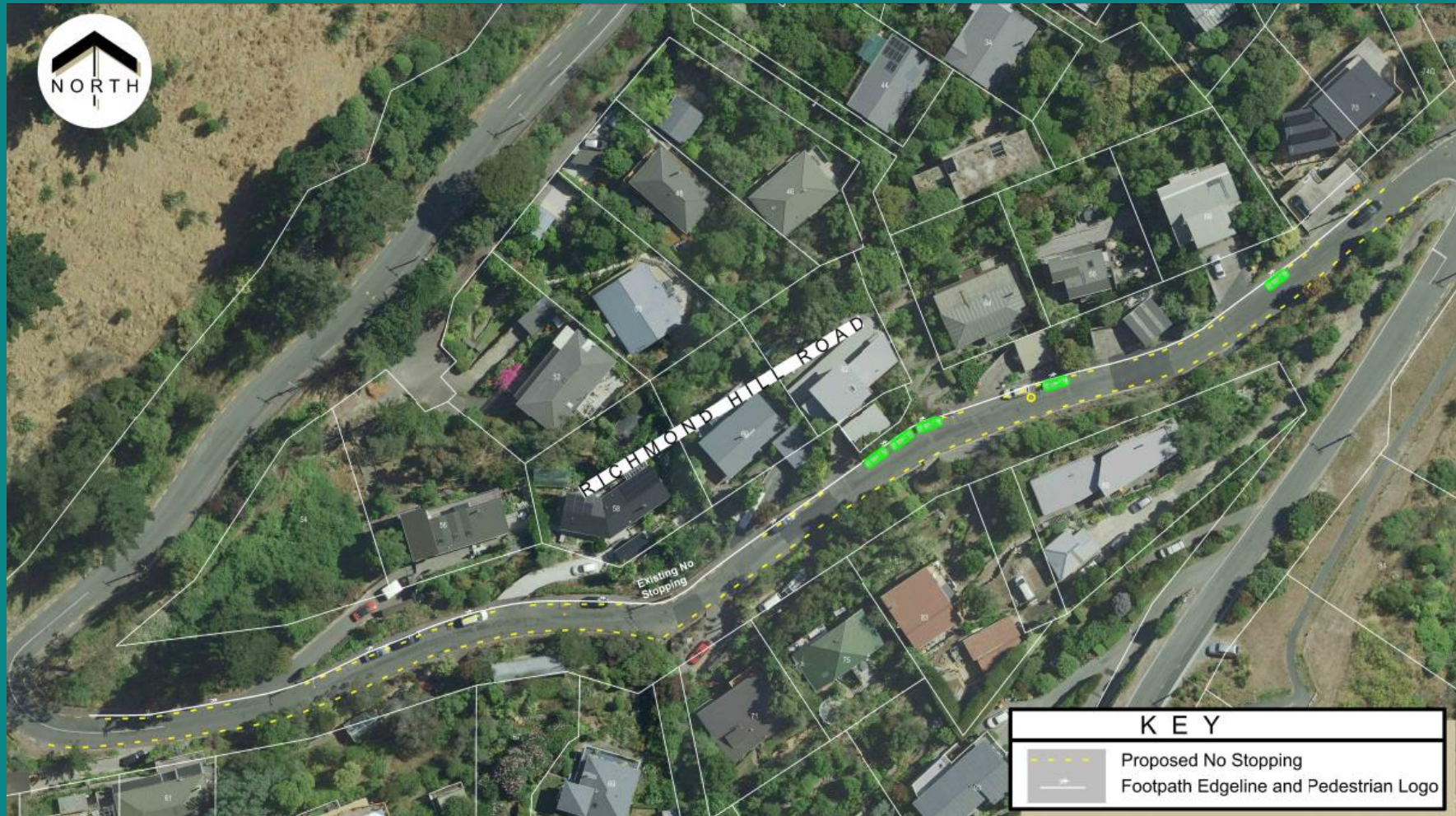


Proposal:

Mark a footpath on the north side, following the alignment of the flush kerb

Mark No Stopping Restrictions in locations where:

- there are existing obstructions that reduce the 'footpath' width e.g. power poles
- there is insufficient road width to accommodate parking and through traffic
- visibility to oncoming traffic is impeded




6

Factors to consider

- The proposal will result in the removal of on-street parking for adjacent residents
- Removing parking can increase speeds: in this location the road is narrow which will still encourage lower speeds. Parking is proposed to be retained where possible
- The footpath area will be narrower than the recommended minimum however this is constrained by the site conditions

Good-to-go Ways to get to school





Cost for schools
\$0



Who we work with

Not just about transport



TALK & LISTEN,
BE THERE,
FEEL CONNECTED



DO WHAT YOU CAN,
ENJOY WHAT YOU DO,
MOVE YOUR MOOD



REMEMBER
THE SIMPLE
THINGS THAT
GIVE YOU JOY



EMBRACE NEW
EXPERIENCES,
SEE OPPORTUNITIES,
SURPRISE YOURSELF



Your time,
your words,
your presence



Mental Health Foundation
mauri tū, mauri ora
www.mentalhealth.org.nz

OF NEW ZEALAND



What we offer schools



Bikes in Schools

Good-to-go ways to get to school

Good-to-go ways to get to school is an exciting programme designed to support schools in encouraging safe, active, fun, affordable, low-emission ways to travel to and from school.



Improves student awareness
of road safety



Encourages practising
kaitiakitanga by lowering
carbon emissions through
travel habits



Encourages active fun,
friendship, confidence and a
sense of adventure.



Empowers students
through decision-making and
creative thinking



Promotes hauora (health
and wellbeing) through
activity



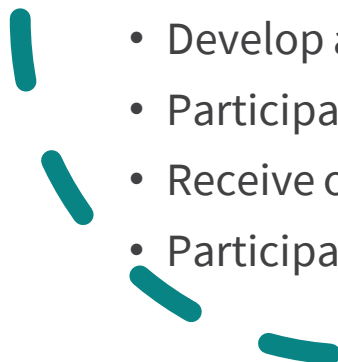
The commitments

Primary and intermediate schools:

- Participate in our March Walk or Wheel to School Week event.
- Receive our newsletters.
- Participate in and distribute our annual school travel survey.

Secondary schools:

- Develop an annual active travel promotion with students and our travel advisors.
- Participate in Crash Bash
- Receive our newsletters.
- Participate in and distribute our annual school travel survey.



Registered schools



Extended support

Available all year:

- Walking school bus workshops
- Additional Walk or Wheel weeks
- Other active travel promotions
- Classroom workshops
- School travel plans

Held annually:

- Road Safety Week - May
- Rail Safety Week - August
- Car Free Day - September



School Travel Planning

A school travel plan is a holistic approach to improving road safety and encouraging the whole school community to use active modes of transport to get to and from school.

- Used when schools have a variety of issues that need addressed
- Presented in the form of a living document that lists initiatives, infrastructure requests with target completion dates.
- The process includes initial conversations, in-depth surveys, focus groups, and official sign off.





Annual School Travel Survey

- We launched our first annual survey in 2023 and had 1800 responses.
- Helps us understand about travel patterns across Christchurch, how we can improve our interactions with schools.
- The survey is completed by one school representative and all students/parents/caregivers.



Scooter skills

New offering being trialed which is only for schools signed up to the programme



In-Class workshops

45 minute in-class curriculum-based workshops based on safe and sustainable travel

In-class workshops

- Exploring Active Transport
 - Junior and Senior
- Safer Speeds
 - Senior (Year 5-8)
- How to catch the bus
 - Senior (Year 5-8)
- Making a difference and creating change
 - Leadership groups





Walking school buses

- We offer walking school bus workshops to school communities that are interested.
- We have resources such as consent forms, route plans and volunteer guides
- We also help with route assistance, ensuring the routes are safe.

Frequent requests

- Parking enforcement
 - Can be done under the programme
- P3 parking restrictions, yellow no parking lines, parking tics/white lines or school warning signs
 - Can be done under the programme
- Traffic lights, kea crossing, zebra crossing or raised platform
 - Major works, likely to be needed to be put on a list due to high costs. A full school travel plan would be needed.
- Traffic calming, new road layouts or new footpaths
 - Major works, likely to be needed to be put on a list due to high costs. A full school travel plan would be needed.

All schools



March Walk or Wheel to School Week

Term One event

- Annual event that is held in the first full week of March each year during term one.
- March 2022, we restarted it as a week-long event, which proved popular increasing registrations by 25%
- This is a fun, action packed week full of active travel initiatives, daily themes, heaps of awesome giveaways
- Each school sent a resource pack, full of spot prizes, promotions, Walk or Wheel passports and more.
- Registrations were 105 for 2024!

Our long-term vision is to have every primary and intermediate school signed up in the region.



Walk or Wheel to School Week

Monday 4 March - Friday 8 March 2024



October Walk or Wheel to School Week

New event in term four!!

- Our schools love our term one event so from 2024 onwards we will also be holding a term four event
- This event has been created due to high demand from schools and parents for more events in this nature.
- Again this is a fun, action packed week full of active travel initiatives, daily themes, heaps of awesome giveaways
- Each school sent a resource pack, full of spot prizes, promotions, Walk or Wheel passports and more.



Road Safety Week - May

Term Two event

- Run by Brake
- Hundreds of schools, kindergartens, youth clubs, community campaigners, employers, sports clubs, fire officers, local councils, paramedics, driving instructors get involved nationwide
- Aims to inspire communities to take action on road safety and promote life-saving messages during the Week and beyond.
- It's free to sign up, access is given to various resources and ideas to use during the week.
- In 2024 we will be supplying schools in Christchurch who have signed up with a resource box of prizes to use



Rail safety week - August

Term Three event

- Track Safe foundation run this event
- An annual community awareness week designed to engage the community in safe rail practices.
- It's free to sign up, access is given to various resources and ideas to use during the week.
- Only applies to schools near railway lines
- Working with them in the future to deliver their workshops to more schools



**Rail
Safety
Week**

Car free day – 22nd September

- World Car Free day is a worldwide movement that brings communities together to consider new ways of getting from A to B, and ditching the car when they can.
- World Car Free Day is held on the same date every year the 22nd of September.
- We encourage all schools to get involved in this day.





Cycle Safe

- This is a programme run by our Cycle Safe team
- Cycle safe training is for year 6 students
- 3606 students over 2023
- 100% satisfaction rate from schools

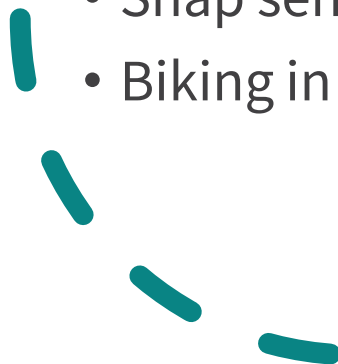
Crash Bash



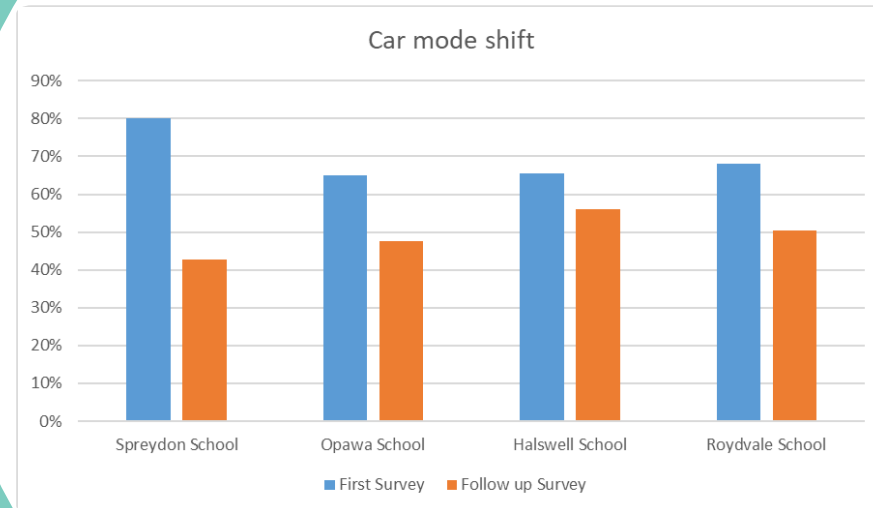


Other resources we have

- Bike maps
- Adult bike skills flyers
- Garage 529 flyers
- Metro information/maps
- Snap send solve
- Biking in our towns and cities flyer




**It actually
makes a
difference**



Kotahitanga Award





Cost for schools
\$0

Thank you!

Any questions?