



**Te Pātaka o Rākaihautū Banks Peninsula Community
Board Information Session/Workshop
MINUTES ATTACHMENTS**

Date: Monday 22 July 2024
Time: 10am
Venue: Lyttelton Community Boardroom,
25 Canterbury Street, Lyttelton

| TABLE OF CONTENTS NGĀ IHIRANGI | PAGE |
|---|-------------|
| 4. Stormwater managment plan for settlements of Te Pātaka o Rākaihautū / Banks Peninsula | |
| A. Item 4 - Stormwater management plan for settlement of Te Pātaka o Rākaihautū Banks Peninsula - 22 July 2024..... | 3 |
| 6. Good-to-go ways to get to school | |
| A. Item 6 - Good to go Ways to Get to School - 22 July 2024..... | 13 |
| 7. 177 Purau Avenue transfer to Ngāti Wheke | |
| A. Item 7 - 177 Purau Avenue Transfer to Ngāti Wheke..... | 41 |
| 8. Update on the Whakaraupo Lyttelton and Koukourarata Port Levy Adaptation Plan | |
| A. Item 8 Update on the Whakaraupo Lyttelton and Koukourarata Port Levy Adaptation Plan 22 July 2024 | 51 |

Te Pātaka o Rākaihautū /Banks Peninsula Settlements Stormwater Management Plan

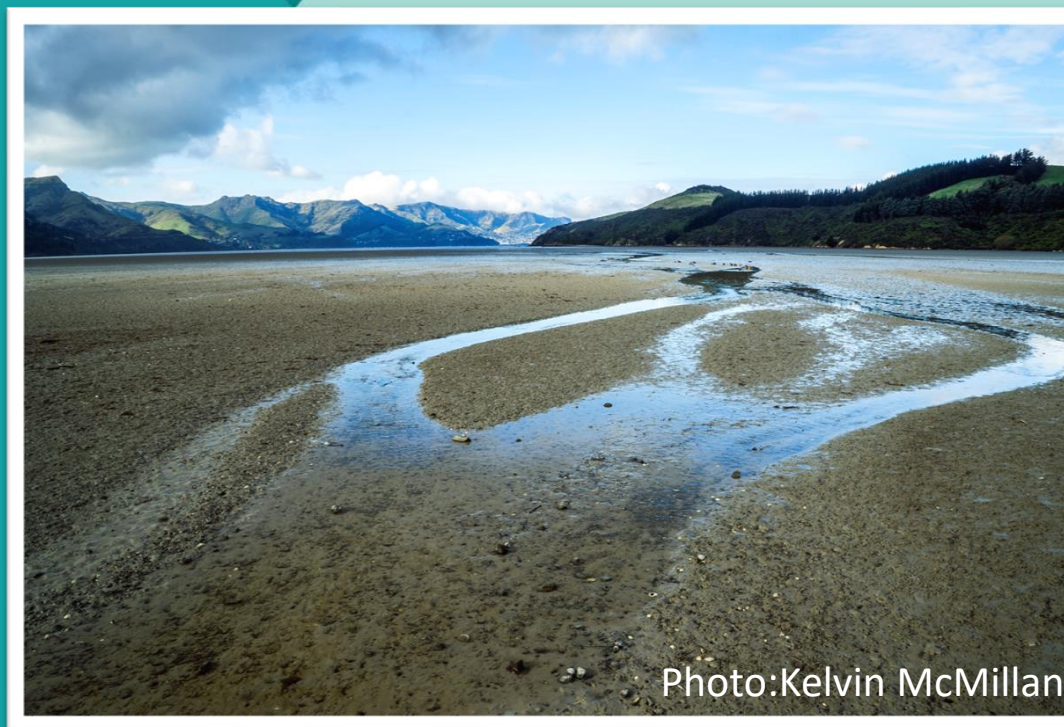
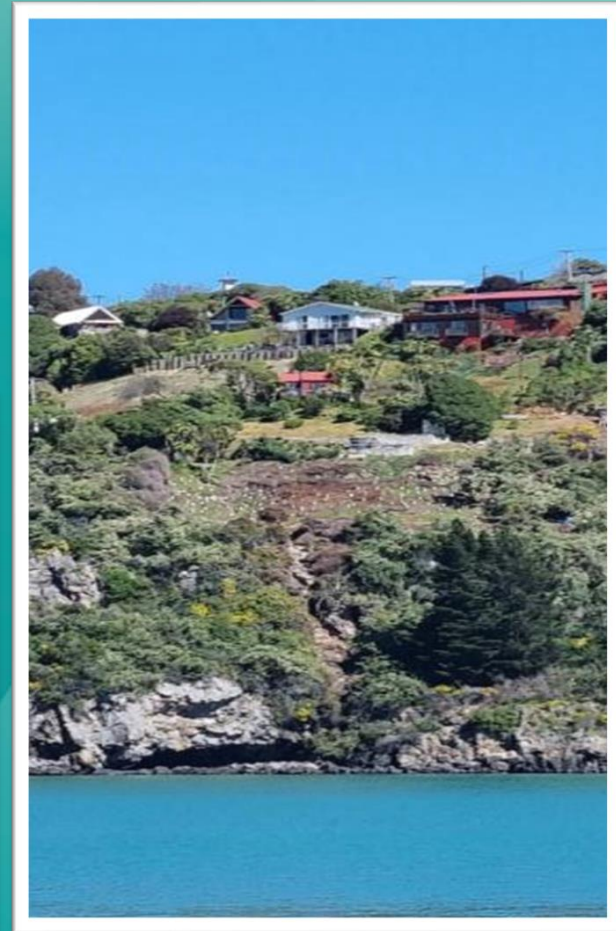


Photo:Kelvin McMillan

Paul Dickson, Asset Planning - Stormwater & Land Drainage, for
Te Pātaka o Rākaihautū / Banks Peninsula Community Board
22 July 2024

Background

- What is a Stormwater Management Plan?
- Scope
- Content
- Consultation



What is a SMP?

Comprehensive Stormwater Network Discharge Consent (2019):
To limit the adverse effects of stormwater discharges on
surface and groundwater quality and quantity

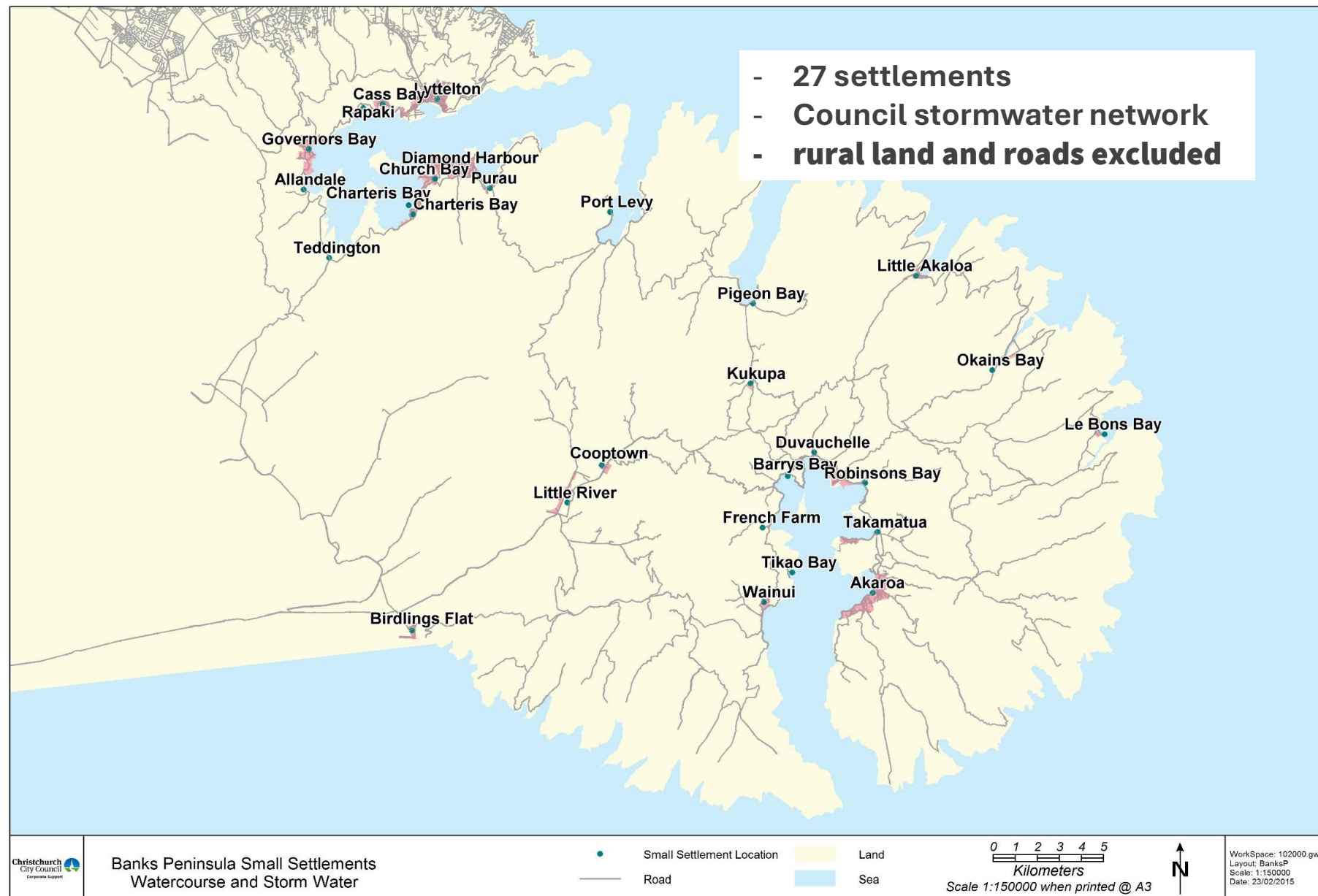


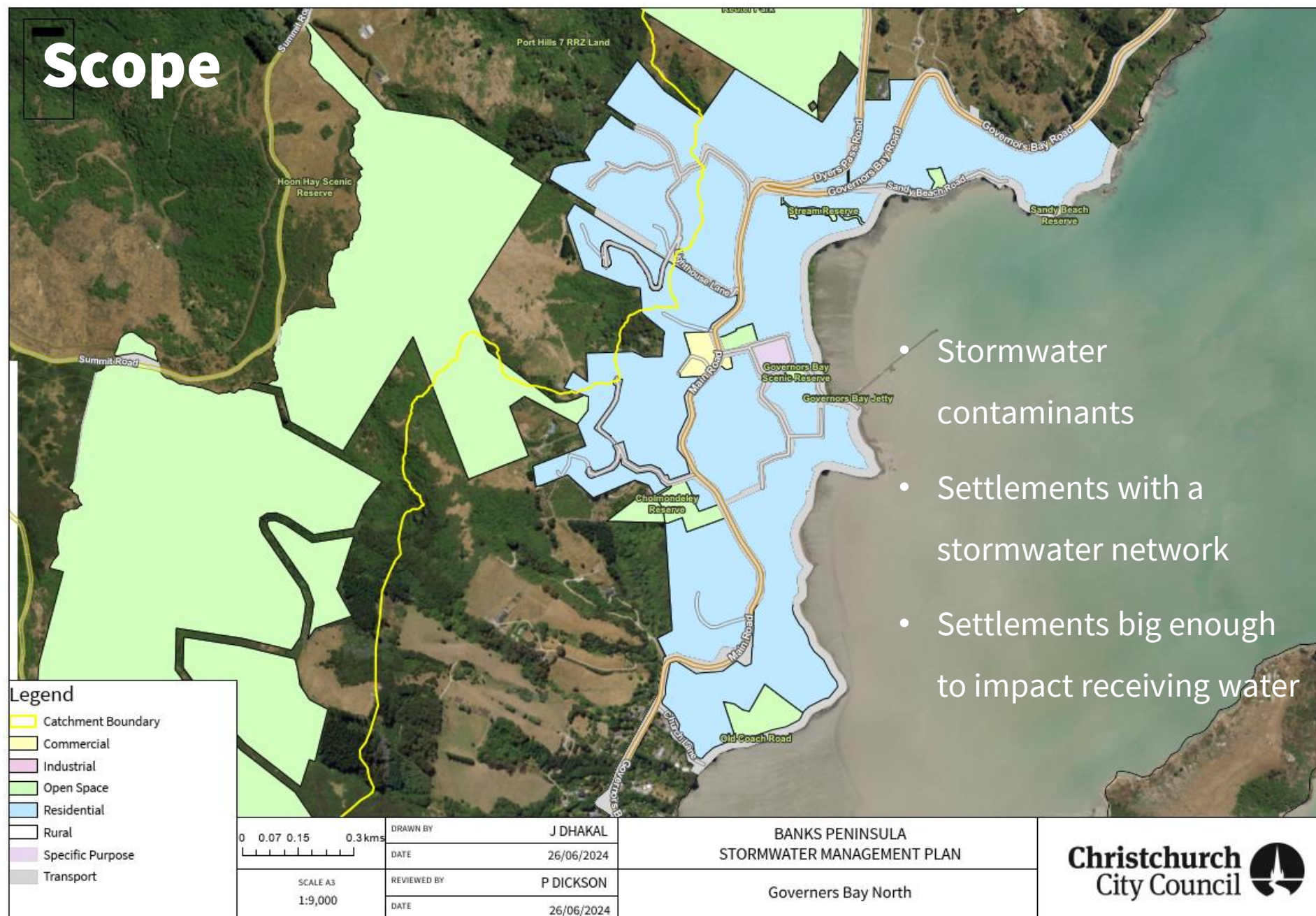
- Stormwater Management Plans
- Environmental monitoring
- Audit industrial sites
- Erosion & sediment control in construction
- Education and engagement

Long Term Plan
Separate process, funds
delivery of SMPs



- Set catchment targets to reduce urban contaminants (sediment and heavy metals)
- Plan for stormwater treatment
- River flooding targets (within City)



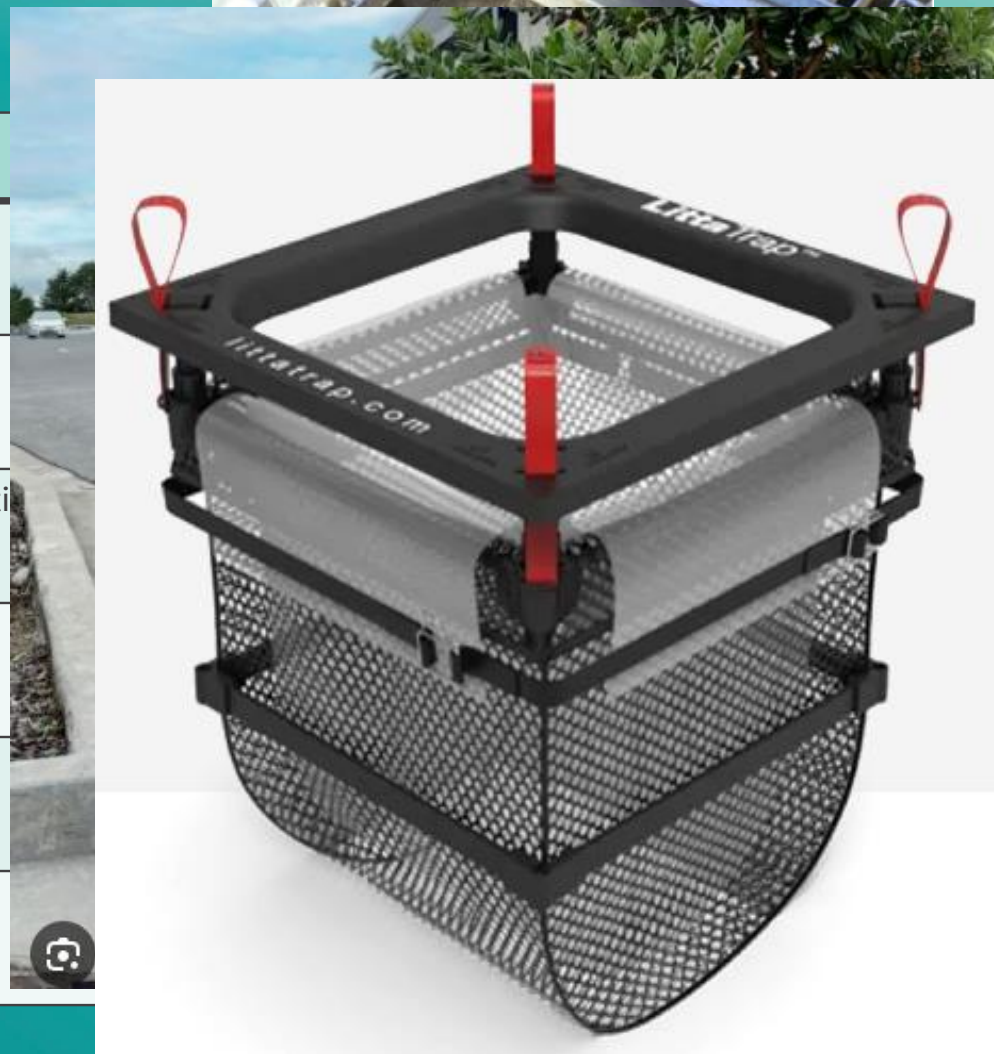


Current approach

- Identify the existing state of the environment
- Understand the goals and concerns of the community
(within SMP scope)
- Probable focus on larger settlements
- Likely to target sediment
- Looking at treatment options suitable for small spaces

More Likely Mitigation Methods

| Mitigation method | Removes |
|-----------------------|----------------------------|
| Cartridge filter | Sediment, metals |
| Bio-filter | Sediment, metals |
| Catchpit filter | Sediment, larger particles |
| Street sweeping | Particles, grit |
| Roof painting | Zinc |
| Low-copper brake pads | Copper |



Flooding

Information being compiled

- Historical flooding information (Akaroa basin)
- Recent flooding incidents (Little River, Le Bons Bay, Lyttelton)
- Interviews with residents in selected settlements (Northern Bays)

SMP to contain a flood risk summary for each settlement

SMP could support future requests from for LTP funding or investigations

Consultation

We are being guided by the Communications and Engagement Team about consultation

Happy to consult with residents. Cautious about potential expectations


Paul is engaging with Mahaanui Kurataiao about consultation with Runanga

Kōrero

<https://ccc.govt.nz/environment/water/waterways>

Good-to-go Ways to get to school





Cost for schools
\$0



Who we work with

Not just about transport



TALK & LISTEN,
BE THERE,
FEEL CONNECTED



DO WHAT YOU CAN,
ENJOY WHAT YOU DO,
MOVE YOUR MOOD



REMEMBER
THE SIMPLE
THINGS THAT
GIVE YOU JOY



EMBRACE NEW
EXPERIENCES,
SEE OPPORTUNITIES,
SURPRISE YOURSELF



Your time,
your words,
your presence



Mental Health Foundation
mauri tū, mauri ora
www.mentalhealth.org.nz

OF NEW ZEALAND



What we offer schools



Bikes
in Schools

Good-to-go ways to get to school

Good-to-go ways to get to school is an exciting programme designed to support schools in encouraging safe, active, fun, affordable, low-emission ways to travel to and from school.



Improves student awareness
of road safety



Encourages practising
kaitiakitanga by lowering
carbon emissions through
travel habits



Encourages active fun,
friendship, confidence and a
sense of adventure.



Empowers students
through decision-making and
creative thinking



Promotes hauora (health
and wellbeing) through
activity



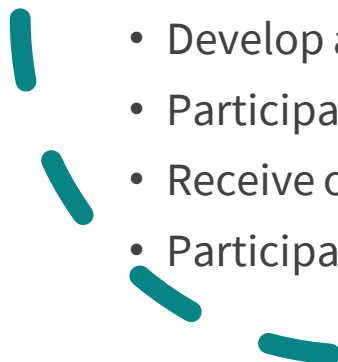
The commitments

Primary and intermediate schools:

- Participate in our March Walk or Wheel to School Week event.
- Receive our newsletters.
- Participate in and distribute our annual school travel survey.

Secondary schools:

- Develop an annual active travel promotion with students and our travel advisors.
- Participate in Crash Bash
- Receive our newsletters.
- Participate in and distribute our annual school travel survey.



Registered schools



Extended support

Available all year:

- Walking school bus workshops
- Additional Walk or Wheel weeks
- Other active travel promotions
- Classroom workshops
- School travel plans

Held annually:

- Road Safety Week - May
- Rail Safety Week - August
- Car Free Day - September



School Travel Planning

A school travel plan is a holistic approach to improving road safety and encouraging the whole school community to use active modes of transport to get to and from school.

- Used when schools have a variety of issues that need addressed
- Presented in the form of a living document that lists initiatives, infrastructure requests with target completion dates.
- The process includes initial conversations, in-depth surveys, focus groups, and official sign off.





Annual School Travel Survey

- We launched our first annual survey in 2023 and had 1800 responses.
- Helps us understand about travel patterns across Christchurch, how we can improve our interactions with schools.
- The survey is completed by one school representative and all students/parents/caregivers.



Scooter skills

New offering being trialed which is only for schools signed up to the programme



In-Class workshops

45 minute in-class curriculum-based workshops based on safe and sustainable travel

In-class workshops

- Exploring Active Transport
 - Junior and Senior
- Safer Speeds
 - Senior (Year 5-8)
- How to catch the bus
 - Senior (Year 5-8)
- Making a difference and creating change
 - Leadership groups





Walking school buses

- We offer walking school bus workshops to school communities that are interested.
- We have resources such as consent forms, route plans and volunteer guides
- We also help with route assistance, ensuring the routes are safe.

Frequent requests

- Parking enforcement
 - Can be done under the programme
- P3 parking restrictions, yellow no parking lines, parking tics/white lines or school warning signs
 - Can be done under the programme
- Traffic lights, kea crossing, zebra crossing or raised platform
 - Major works, likely to be needed to be put on a list due to high costs. A full school travel plan would be needed.
- Traffic calming, new road layouts or new footpaths
 - Major works, likely to be needed to be put on a list due to high costs. A full school travel plan would be needed.

All schools



March Walk or Wheel to School Week

Term One event

- Annual event that is held in the first full week of March each year during term one.
- March 2022, we restarted it as a week-long event, which proved popular increasing registrations by 25%
- This is a fun, action packed week full of active travel initiatives, daily themes, heaps of awesome giveaways
- Each school sent a resource pack, full of spot prizes, promotions, Walk or Wheel passports and more.
- Registrations were 105 for 2024!

Our long-term vision is to have every primary and intermediate school signed up in the region.



Walk or Wheel to School Week

Monday 4 March - Friday 8 March 2024



October Walk or Wheel to School Week

New event in term four!!

- Our schools love our term one event so from 2024 onwards we will also be holding a term four event
- This event has been created due to high demand from schools and parents for more events in this nature.
- Again this is a fun, action packed week full of active travel initiatives, daily themes, heaps of awesome giveaways
- Each school sent a resource pack, full of spot prizes, promotions, Walk or Wheel passports and more.



Road Safety Week - May

Term Two event

- Run by Brake
- Hundreds of schools, kindergartens, youth clubs, community campaigners, employers, sports clubs, fire officers, local councils, paramedics, driving instructors get involved nationwide
- Aims to inspire communities to take action on road safety and promote life-saving messages during the Week and beyond.
- It's free to sign up, access is given to various resources and ideas to use during the week.
- In 2024 we will be supplying schools in Christchurch who have signed up with a resource box of prizes to use



Rail safety week - August

Term Three event

- Track Safe foundation run this event
- An annual community awareness week designed to engage the community in safe rail practices.
- It's free to sign up, access is given to various resources and ideas to use during the week.
- Only applies to schools near railway lines
- Working with them in the future to deliver their workshops to more schools



**Rail
Safety
Week**

Car free day – 22nd September

- World Car Free day is a worldwide movement that brings communities together to consider new ways of getting from A to B, and ditching the car when they can.
- World Car Free Day is held on the same date every year the 22nd of September.
- We encourage all schools to get involved in this day.





Cycle Safe

- This is a programme run by our Cycle Safe team
- Cycle safe training is for year 6 students
- 3606 students over 2023
- 100% satisfaction rate from schools

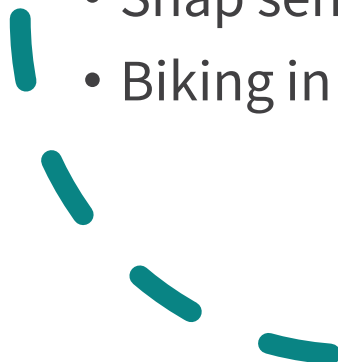
Crash Bash



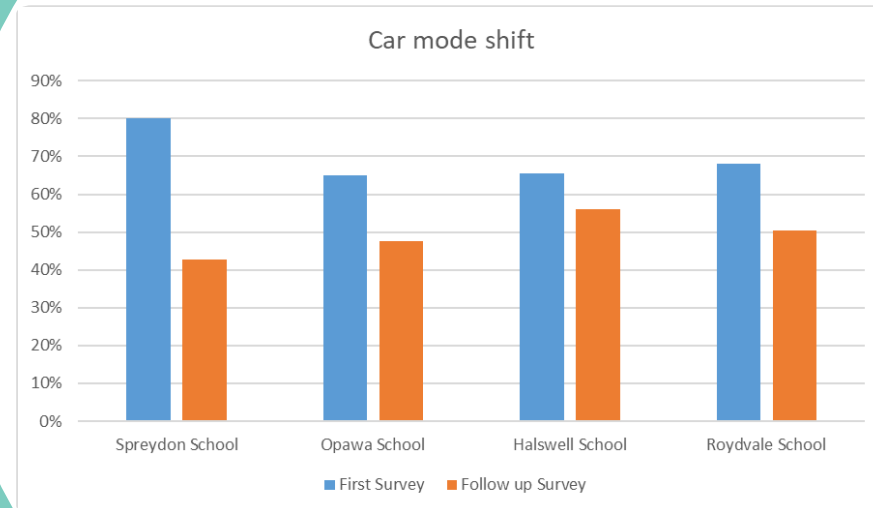


Other resources we have

- Bike maps
- Adult bike skills flyers
- Garage 529 flyers
- Metro information/maps
- Snap send solve
- Biking in our towns and cities flyer




**It actually
makes a
difference**



Kotahitanga Award





Cost for schools
\$0

Thank you!

Any questions?

177 Purau Ave Return of this Urupā to Ngāti Wheke



Purpose

- ❖ To inform the Community Board on a proposal to return a Council owned property at 177 Purau Road to Te Hapū o Ngāti Wheke.
- ❖ Set out the process required for that to occur.
- ❖ Seek the Board's support and direction on the associated consultation.

Background

- ❖ Council owned block of land 177 Purau Avenue. Referred to as Pūrau Māori Reserve.
- ❖ 1381 m² held in record of title 841068 and legally described as Reserve 4622.
- ❖ There is a long history and chain of ownership. Current status is
- ❖ Held under the Reserves Act 1977 and held for public reserve purposes.
- ❖ This burial site (urupā) is of high cultural and historic significance to Ngāti Wheke.
- ❖ Has been the subject of conversation with Te Hapū o Ngāti Wheke over a number of years. Focused on establishing appropriate ownership control and use of the land.

Background - contd

- ❖ Objectives:
 - ❖ To appropriately recognise the significance of the site,
 - ❖ Empower Ngāti Wheke to exercise kaitiaki responsibilities through ownership,
 - ❖ Return ownership so that as mana whenua Ngāti Wheke can ensure the urupā and the kōiwi within it are treated with utmost respect.
- ❖ Should the Council wish to support the objectives and return the site to Ngāti Wheke the reserve status would need to be revoked.
- ❖ That would create a fee simple parcel that the Council can deal with.
- ❖ The Reserves Act revocation process requires consultation and a Department of Conservation process.

Background - contd

- ❖ A recent indication from the Department of Conservation in support of an application to revoke the reserve status paves the way to consider a process that could see the property more appropriately owned, controlled and managed by Ngāti Wheke.

Process

- ❖ Options report to the Council 4 September via the Community Board 12 August.
- ❖ Consultation DOC requirements – section 119 Reserves Act 1977 and Local Government Act section 78.
- ❖ Submissions considered by a Hearings Panel.
- ❖ Hearings Panel report to Council.
- ❖ Apply to DOC to revoke the reserve status.
- ❖ Return land to Ngāti Wheke.

Engagement requirements

Department of conservation – follow Reserves Act process and consult with local Rūnanga

Reserves Act 1977 (section 177) – public notice with 30 days to respond;

“every person claiming to be affected by the proposed change of classification or purpose or revocation shall have a right of objection”

Local Government Act (Section 78)

“A local authority must, in the course of its decision-making process in relation to a matter, give consideration to the views and preferences of persons likely to be affected by, or to have an interest in, the matter. ”

Engagement audience and tactics

Target audience

- Pūrau residents and bach owners
- Pūrau Residents Group
- Diamond Harbour Reserves Committee (DHRC)
- Other Rūnanga

Tactics

- Direct Mail (absentee owners)
- Leaflet drop
- Emails to previous participants (2018/19)
- Kanohi te kanohi with Residents Group, DHRC and Rūnanga
- Public notice in local paper (required by Reserves Act)

Next Steps

We will take your feedback from this briefing to help finalise the formal options report, especially around the consultation.

Questions?

10

Coastal Hazards Adaptation Planning

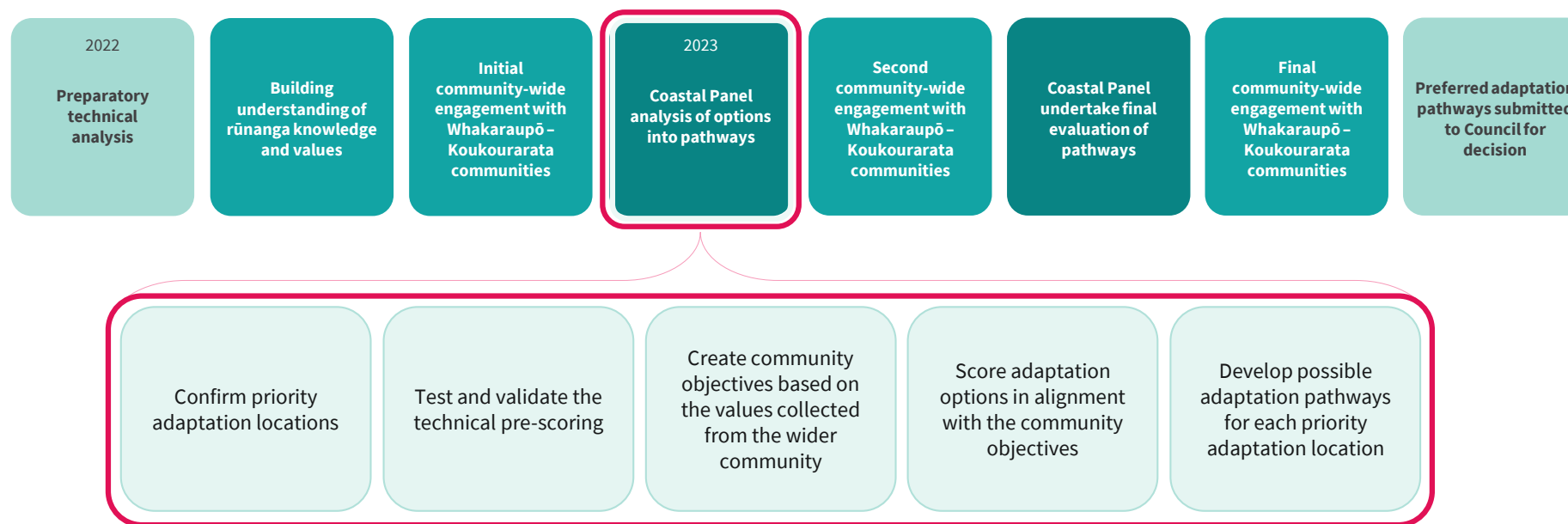
Whakaraupō Lyttelton Harbour & Koukourarata Port Levy



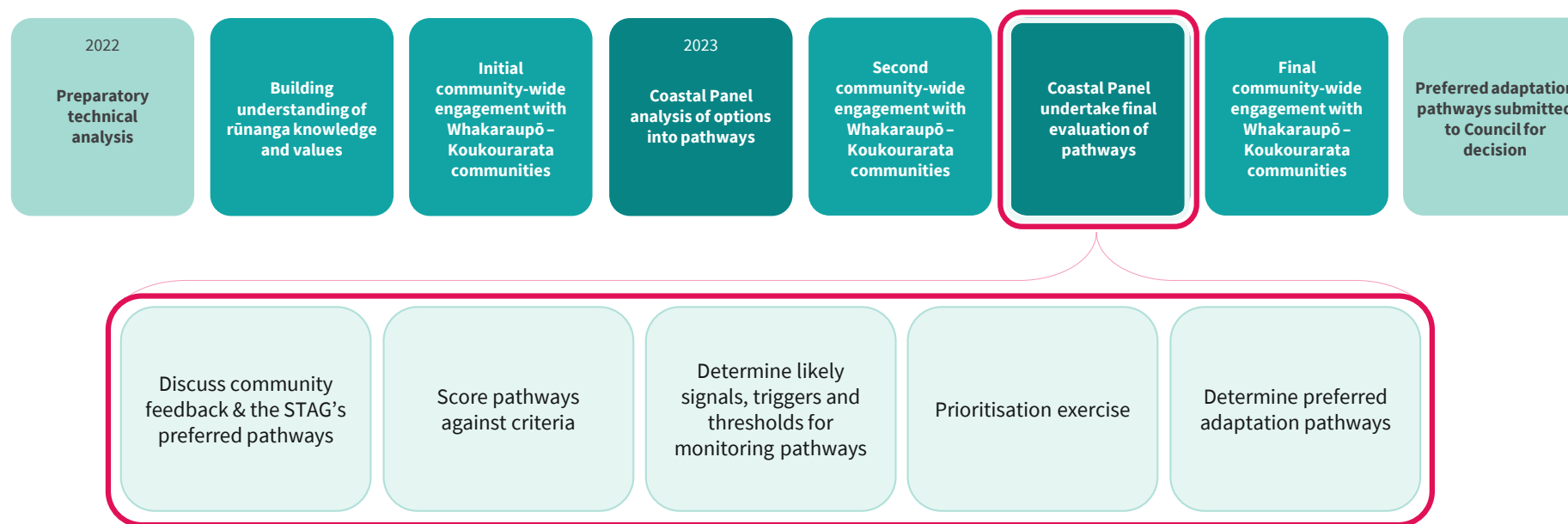
Process



Process



Process



Coastal Panel's preferred adaptation pathways

5



The draft adaptation pathways

Coastal Hazard Adaptation Planning in Allandale

The peaceful, natural setting that the “quietness of the bay”, “native vegetation”, and “the proximity to the hills and the sea” creates.

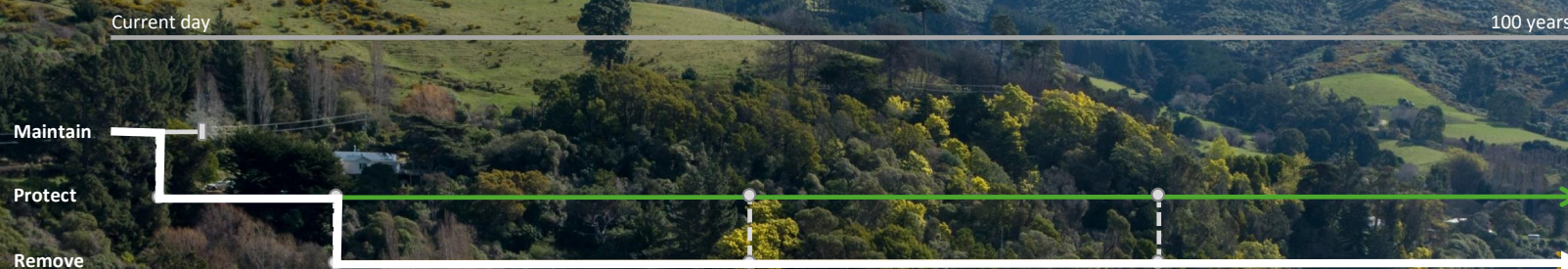
The “Māori heritage” and “strong sense of identifying with the harbour and with Banks Peninsula” that creates a “great sense of community”.

Having access to “the cliff-track walks, rock formations and beaches” and “being able to easily access the wharf and beach to go swimming and kayaking”.

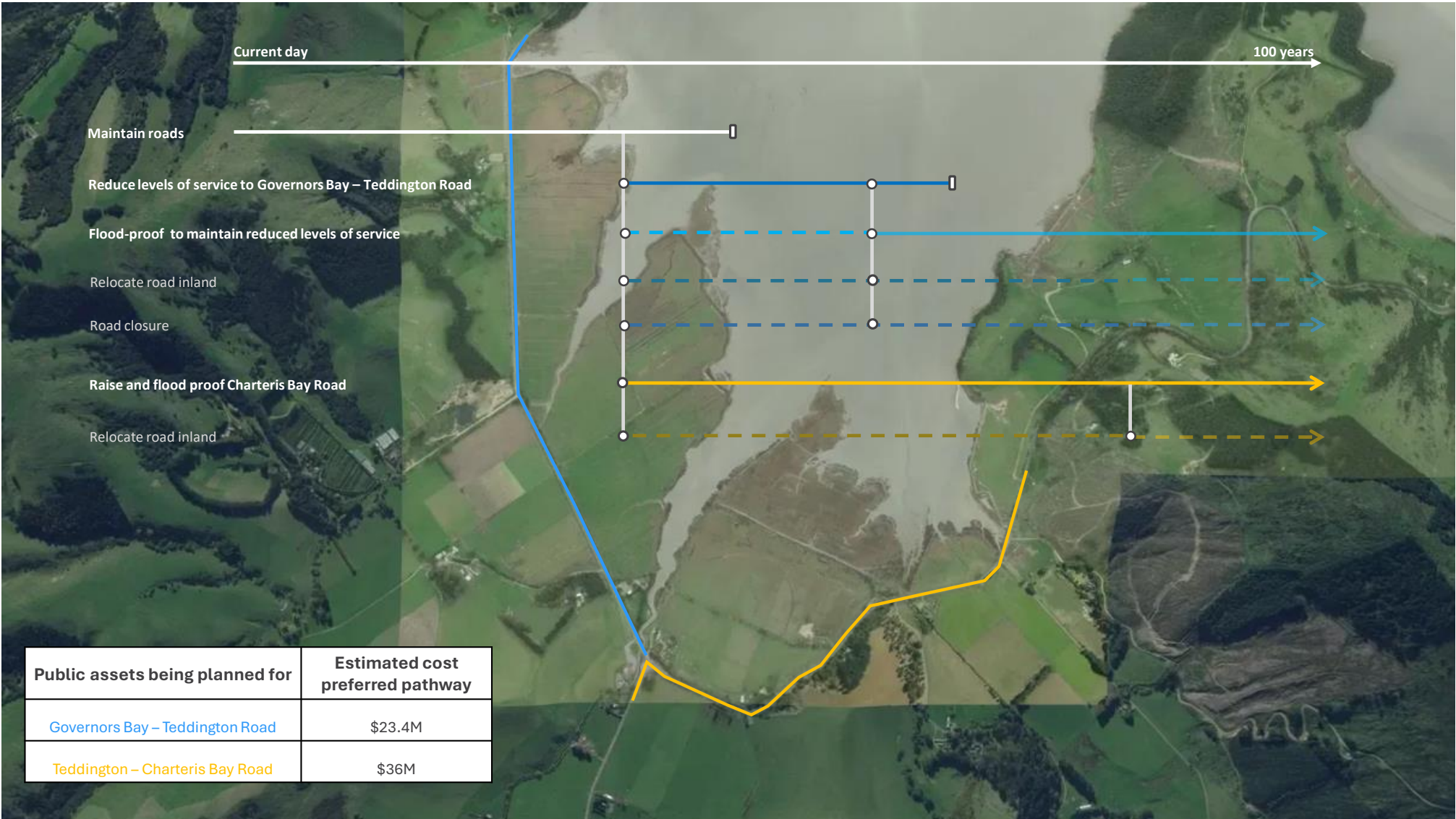
You do want to see “more native vegetation and wildlife”, “hills covered in bush”, and access to a “natural coastline with native plantings and reserves”.

You want any new development to be carefully considered to avoid “buildings and infrastructure falling into the sea because it was built in the wrong place”.

Allandale – closed landfill



- While removal is likely to be possible, it would be expensive, complex and will require further investigation before we know whether it is feasible.
- There are other contaminated sites around the district at similar risk.
- Protection is likely to be required in the interim, irrespective of whether removal is the long-term outcome.
- The Coastal Panel's preferred pathway is to remove the landfill, but this is subject to further investigation and will require a period of interim protection.



Visualising possible futures: preferred adaptation pathways

10



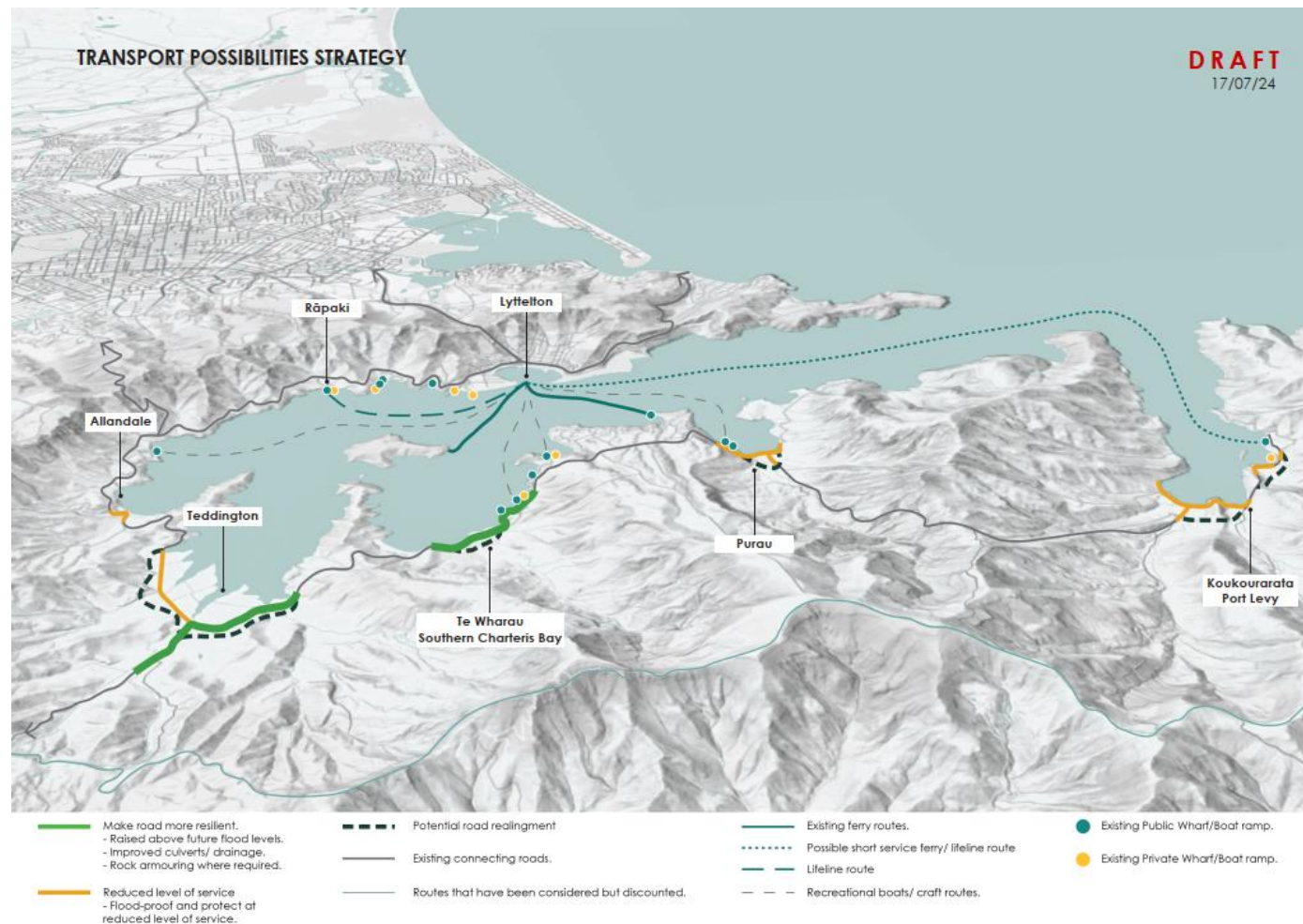
Planning across the whole Adaptation Area

11



Community Objective: infrastructure

Ensure infrastructure, such as roads, jetties, ... are sufficiently resilient to support the health, safety and wellbeing of communities now and in the future.

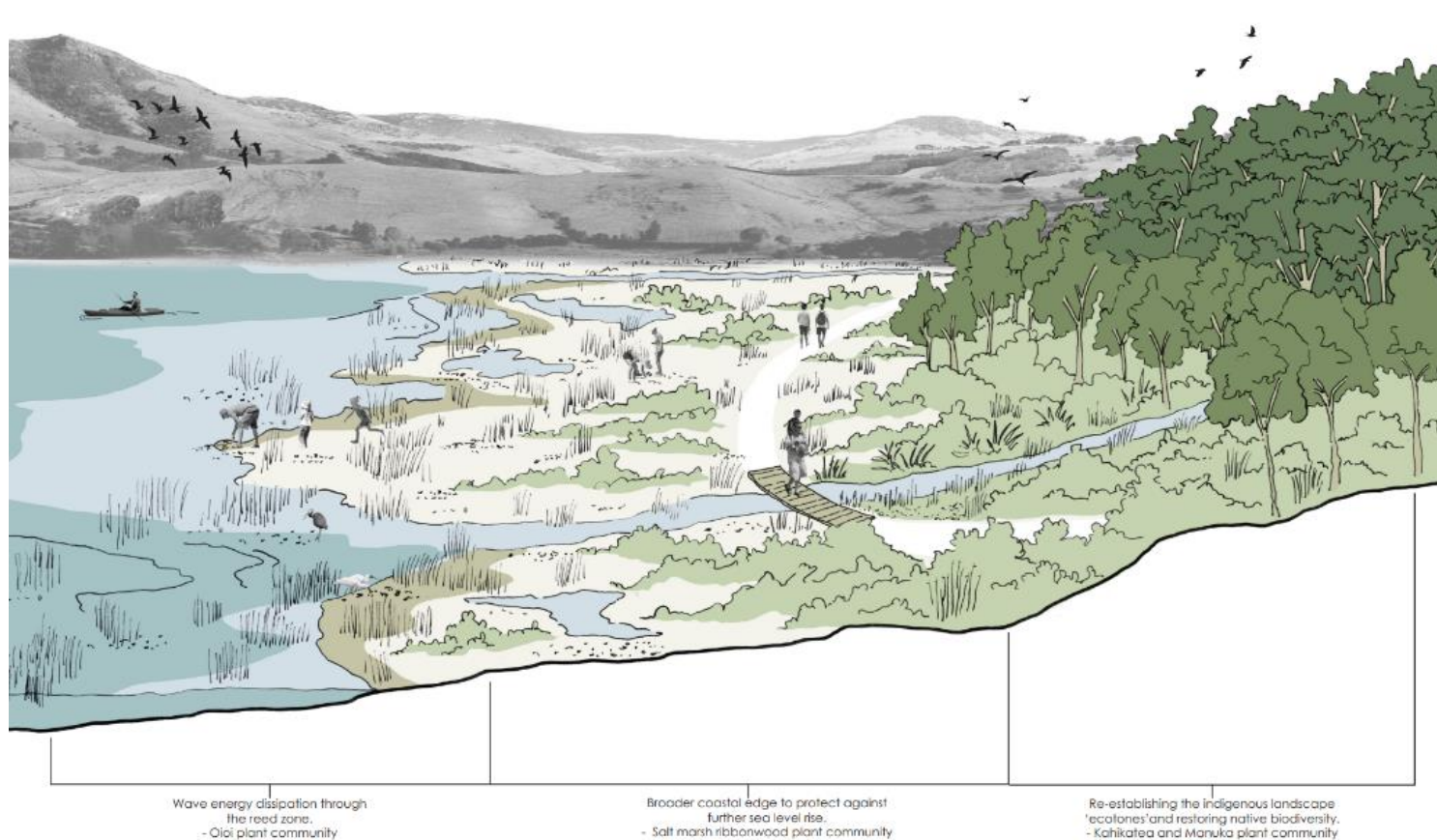


**Community
Objective:
Environment and
landscapes**

Protect landscape
amenity and
protect the
natural
environment for
mahinga kai,
natural resources
and native
biodiversity

ECOLOGICAL OPPORTUNITIES

DRAFT
15/07/24



**Next steps:
Draft Adaptation Plan and engagement approach**

Contents: Coastal Panel's draft Adaptation Plan

1. Opening messages

From the Mayor, mana whenua, and the Independent Chair on behalf of the Coastal Panel + an outline of the document and what it does/doesn't address.

2. The hazards in Whakaraupō and Koukourarata

An overview of how this Adaptation Area will be impacted by coastal hazards and what overarching opportunities exist for this area to adapt in the future + key messages around what is feasible, and how our way of life might change as we adapt to these hazards.

3. The process

Including an overview of the Coastal Adaptation Framework, establishment of the Coastal Panel and Specialist & Technical Advisory Group, overview of key steps in the process including the multiple engagements with the wider community and how this feedback was utilised.

4. Priority Adaptation Locations (x6 chapters)

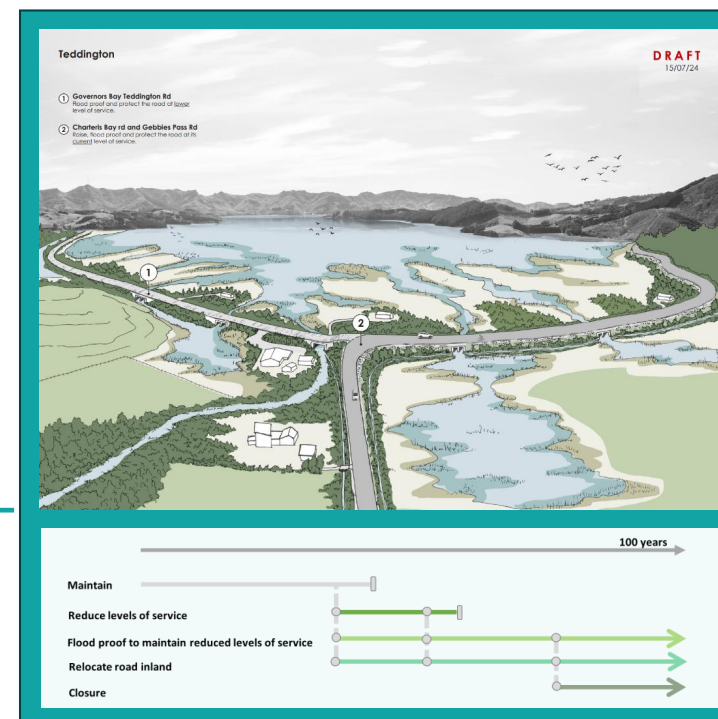
Including context (coastal hazard risk in this area, critical infrastructure and dependencies, key values and community input) and detailed adaptation pathways which are supported by *visual representations of the pathways*.

5. Network-wide impacts

An overview of the key network risks and what opportunities and options could be implemented to address these risks.

6. Next steps

Including: the monitoring of signals, triggers and thresholds + prioritisation, funding and implementation of actions in this plan.



Engagement

Past engagements:



Upcoming engagement:



- The draft Adaptation Plan will be available online and in local service centres.
- Online webinars will provide an opportunity for the public to ask questions.
- We aim to start meeting with resident associations and other groups early.
- We will publish a Newsline story on release.
- We will send out a newsletter.
- We can do a mail drop if needed.

Thank you