



Waipuna Halswell-Hornby-Riccarton Community Board AGENDA

Notice of Meeting:

An ordinary meeting of the Waipuna Halswell-Hornby-Riccarton Community Board will be held on:

Date: Thursday 11 July 2024
Time: 4.30 pm
Venue: Rārākau: Riccarton Centre,
199 Clarence Street, Christchurch

Membership

Chairperson	Marie Pollisco
Deputy Chairperson	Helen Broughton
Members	Sarah Brunton
	Henk Buunk
	Gamal Fouda
	Tyla Harrison-Hunt
	Andrei Moore
	Debbie Mora
	Mark Peters

8 July 2024

Bailey Peterson
Acting Manager Community Governance,
Halswell, Hornby, Riccarton
Tel: 941 6743

Faye Collins
Community Board Advisor
941 5108
faye.collins@ccc.govt.nz
www.ccc.govt.nz

Note: The reports contained within this agenda are for consideration and should not be construed as Council policy unless and until adopted. If you require further information relating to any reports, please contact the person named on the report.

To watch the meeting live, or a recording after the meeting date, go to:

https://www.youtube.com/channel/UCQN_yNuZzfRhDJ2scAEjCvA

To view copies of Agendas and Minutes, go to:

<https://www.ccc.govt.nz/the-council/meetings-agendas-and-minutes/>



What is important to us?

Our Strategic Framework is a big picture view of what the Council is aiming to achieve for our community

Our focus this Council term 2022–2025

Strategic Priorities



Be an inclusive and equitable city which puts **people at the centre** of developing our city and district, prioritising wellbeing, accessibility and connection.



Champion Ōtautahi-Christchurch and collaborate to build our role as a leading New Zealand city.



Build trust and confidence in the Council through meaningful partnerships and communication, listening to and working with residents.

Adopted by the Council on 5 April 2023



Reduce emissions as a Council and as a city, and invest in **adaptation and resilience**, leading a city-wide response to climate change while protecting our indigenous biodiversity, water bodies and tree canopy.



Manage ratepayers' money wisely, delivering quality core services to the whole community and addressing the issues that are important to our residents.



Actively balance the needs of **today's residents** with the **needs of future generations**, with the aim of leaving no one behind.

Our goals for this Long Term Plan 2024–2034

Draft Community Outcomes



Collaborative and confident

Our residents have the opportunity to actively participate in community and city life, have a strong sense of belonging and identity, and feel safe.



Green and liveable

Our neighbourhoods and communities are accessible and well connected, supporting our goals to reduce emissions, build climate resilience and protect and regenerate the environment, especially our biodiversity, water bodies and tree canopy.

To be adopted by the Council as part of the Long Term Plan 2024–2034



A cultural powerhouse

Our diverse communities are supported to understand and protect their heritage, pursue their arts, cultural and sporting interests, and contribute to making our city a creative, cultural and events 'powerhouse'.



Thriving and prosperous

Our city is a great place for people, business and investment where we can all grow our potential, where enterprises are innovative and smart, and where together we raise productivity and reduce emissions.

Our intergenerational vision

A place of opportunity for all.

Open to new ideas, new people,
new investment and new ways
of doing things – a place where
anything is possible.



Ngāi Tahu has rangatiratanga over its takiwā – the Council is committed to partnering with Ngāi Tahu to achieve meaningful outcomes that benefit the whole community

Waipuna Halswell-Hornby-Riccarton

Our priorities 2023-25

- | | |
|------------------|---|
| Halswell | Advocate for a fenced dog park for the Halswell Ward. |
| Halswell | Advocate for safe, accessible pedestrian connections to significant community destinations in the Halswell Ward. |
| Halswell | Support initiatives that provide safe recreation spaces and opportunities for youth in Halswell to come together. |
| Hornby | Advocate for the development and implementation of a Hornby Masterplan. |
| Hornby | Advocate for the revitalisation of greenspaces in the Hornby Ward including the increase of tree canopy in the ward. |
| Hornby | Support the transition of the Hornby Community Care Centre to full ownership for the Hornby Community Care Trust. |
| Riccarton | Advocate for liveable neighbourhoods in the Riccarton Ward. |
| Riccarton | Support initiatives that provide for social cohesion, community connectedness and safety in the Riccarton Ward. |
| Riccarton | Support initiatives that provide things to do, places to go for youth in the Riccarton Ward. |

Part A	Matters Requiring a Council Decision
Part B	Reports for Information
Part C	Decisions Under Delegation

TABLE OF CONTENTS NGĀ IHIRANGI

Karakia Tīmatanga	5
C 1. Apologies Ngā Whakapāha	5
B 2. Declarations of Interest Ngā Whakapuaki Aronga	5
C 3. Confirmation of Previous Minutes Te Whakaāe o te hui o mua	5
B 4. Public Forum Te Huinga Whānui	5
B 5. Deputations by Appointment Ngā Huinga Whakaritenga.....	5
B 6. Presentation of Petitions Ngā Pākikitanga	5

STAFF REPORTS

C 7. Steadman Road Proposed No Stopping Restrictions	15
C 8. Packard Crescent Proposed No Stopping Restrictions	23
CA 9. Shands Road Cycle Lanes	29
C 10. Proposed Road Names - 301R Wigram Road	35
C 11. Newbridge Place - Mobility Parking and P120 Parking Restrictions Amendment	41
B 12. Waipuna Halswell-Hornby-Riccarton Community Board Area Report - July 2024	47
B 13. Elected Members' Information Exchange Te Whakawhiti Whakaaro o Te Kāhui Amorangi.....	76
C 14. Resolution to Exclude the Public.....	77
Karakia Whakamutunga	

Karakia Tīmatanga

Whakataka te hau ki te uru Whakataka te hau ki te tonga Kia mākinakina ki uta Kia mātaratara ki tai E hī ake ana te atakura He tio, he huka, he hauhūnga Tīhei Mauri Ora	Cease the winds from the west Cease the winds from the south Let the breeze blow over the land Let the breeze blow over the ocean Let the red-tipped dawn come with a sharpened air. A touch of frost, a promise of a glorious day.
--	---

1. Apologies Ngā Whakapāha

At the close of the agenda no apologies had been received.

2. Declarations of Interest Ngā Whakapuaki Aronga

Members are reminded of the need to be vigilant and to stand aside from decision making when a conflict arises between their role as an elected representative and any private or other external interest they might have.

3. Confirmation of Previous Minutes Te Whakaāe o te hui o mua

That the minutes of the Waipuna Halswell-Hornby-Riccarton Community Board meeting held on [Thursday, 13 June 2024](#) be confirmed (refer page 6).

4. Public Forum Te Huinga Whānui

A period of up to 30 minutes will be available for people to speak for up to five minutes on any issue that is not the subject of a separate hearings process.

There were no public forum requests received at the time the agenda was prepared

5. Deputations by Appointment Ngā Huinga Whakaritenga

Deputations may be heard on a matter or matters covered by a report on this agenda and approved by the Chairperson.

5.1 Steadman Road Proposed No Stopping Restrictions

Howard Harvey will address the Board in relation to the Steadman Road Proposed No Stopping Restrictions Report (Item 7 of the Agenda refers).

6. Presentation of Petitions Ngā Pākikitanga

There were no petitions received at the time the agenda was prepared.



Christchurch
City Council



Waipuna
Halswell-Hornby-Riccarton Community Board
OPEN MINUTES

Date: Thursday 13 June 2024
Time: 4.32 pm
Venue: Rārākau: Riccarton Centre,
199 Clarence Street, Christchurch

Present

Chairperson	Marie Pollisco
Deputy Chairperson	Helen Broughton
Members	Sarah Brunton
	Henk Buunk
	Tyla Harrison-Hunt
	Andrei Moore
	Debbie Mora (via audio/visual link)
	Mark Peters

Bailey Peterson
Acting Manager Community Governance,
Halswell, Hornby, Riccarton
Tel: 941 6743

Faye Collins
Community Board Advisor
941 5108
faye.collins@ccc.govt.nz
www.ccc.govt.nz

To watch the meeting live, or a recording after the meeting date, go to:

https://www.youtube.com/channel/UCQN_yNuZzfRhDJ2scAEjCvA

To view copies of Agendas and Minutes, go to:

<https://www.ccc.govt.nz/the-council/meetings-agendas-and-minutes/>



- Part A** **Matters Requiring a Council Decision**
Part B **Reports for Information**
Part C **Decisions Under Delegation**
-

Karakia Tīmatanga

The agenda was dealt with in the following order.

1. Apologies Ngā Whakapāha

Part C

Community Board Resolved HHRB/2024/00049

That the apology received from Gamal Fouda be accepted.

Marie Pollisco/Helen Broughton

Carried

2. Declarations of Interest Ngā Whakapuaki Aronga

Part B

There were no declarations of interest recorded.

3. Confirmation of Previous Minutes Te Whakaāe o te hui o mua

Part C

Community Board Resolved HHRB/2024/00050

That the minutes of the Waipuna Halswell-Hornby-Riccarton Community Board meeting held on Thursday, 9 May 2024 be confirmed.

Tyla Harrison-Hunt/Andrei Moore

Carried

4. Public Forum Te Huinga Whānui

Part B

4.1 Operation times of the Riccarton Road Bus Lanes

The scheduled presentation did not go ahead.

4.2 Pedestrian crossing on Creyke Road

Beatrix Gilling, local resident, addressed the Board regarding pedestrian safety on Creyke Road, Ilam. Ms Gilling advised that she buses to the University of Canterbury and alights at the bus stop on Creyke Road opposite the opposite the Engineering Block. She said it is often difficult for passengers from the bus to cross at this point on the busy road and she would like to see a pedestrian crossing facility installed to improve pedestrian safety.

Following questions from members the Chairperson thanked Beatrix Gilling, for her presentation.

Part B

That the Waipuna Halswell-Hornby-Riccarton Community Board:

1. Refers the issues raised in the presentation to staff and requests an investigation of pedestrian safety on Creyke Road in the vicinity of the University of Canterbury and advice on any improvements that can be made including the need for installation of a pedestrian crossing facility.

4.3 Pedestrian safety at the Kilmarnock Street and Darvel Street intersection, Riccarton
Maia Ridler and Gousiya Saniya, local residents, addressed the Board regarding pedestrian safety at the Kilmarnock Street and Darvel Street intersection, Riccarton.

Maia and Gousiya attend Christchurch Girls High School. They have noted that the intersection is extremely congested particularly at the end of the school day and observed students unsafe crossing practices. Maia and Gousiya are concerned about pedestrian safety and have surveyed the school population and interviewed teachers; the results indicating that the majority share their concerns and consider that safety would be improved by a pedestrian crossing facility in the vicinity of the intersection.

Following questions from members the Chairperson thanked Maia Ridler and Gousiya Saniya, for their presentation.

Part B

That the Waipuna Halswell-Hornby-Riccarton Community Board:

1. Refers the issues raised in the presentation to staff and requests an investigation of pedestrian safety in the vicinity of the intersection of Kilmarnock and Darvel Streets, Riccarton and advice on any improvements that can be made including the need for installation of a pedestrian crossing facility.

Attachments

- A Presentation - Pedestrian safety at the Kilmarnock Street and Darvel Street intersection, Riccarton

5. Deputations by Appointment Ngā Huinga Whakaritenga

Part B

There were no deputations by appointment.

6. Presentation of Petitions Ngā Pākikitanga

Part B

There was no presentation of petitions.

7. Tree Planting plans for 2024 Urban Forest Tree Planting Projects

Community Board Resolved HHRB/2024/00051 Officer recommendations accepted without change

Part C

That the Waipuna Halswell-Hornby-Riccarton Community Board:

1. Receives the information in the Tree Planting plans for 2024 Urban Forest Tree Planting Projects Report.
2. Notes that the decisions in this report are assessed as low significance based on the Christchurch City Council's Significance and Engagement Policy.
3. Approves the planting of trees in Runnymede Reserve, Marcella Reserve, Harrington Park and Fanshaw Reserve as per the plans attached to the report on the meeting agenda.
4. Approves the planting of trees in Scotts Park and Jones Reserve as per the plans attached to the report on the meeting agenda.
5. Approves the planting of trees in Holmes Park, Showgate Reserve and Denton Park as per the plans attached to the report on the meeting agenda.
6. Approves the planting of trees in Franco and Evora park as per the plans attached to the report on the meeting agenda.
7. Approves the planting of trees in Tautoru Reserve as per the plans attached to the report on the meeting agenda.

Mark Peters/Andrei Moore

Carried

8. Epsom Road / Middlepark Road Intersection - Proposed No Stopping Restrictions

Community Board Resolved HHRB/2024/00052 Officer recommendations accepted without change

Part C

That the Waipuna Halswell-Hornby-Riccarton Community Board:

1. Receives the information in the Epsom Road / Middlepark Road Intersection - Proposed No Stopping Restrictions Report.
2. Notes that the decisions in this report are assessed as low significance based on the Christchurch City Council's Significance and Engagement Policy.
3. Revokes any previous resolutions pertaining to traffic controls made pursuant to any bylaw to the extent that they are in conflict with the parking or stopping restrictions described in resolutions 4 – 7 below.
4. Approves, pursuant to Clause 7 of the Christchurch City Council Traffic and Parking Bylaw 2017, that the stopping of vehicles be prohibited at all times on the northeast side of Middlepark Road, commencing at its intersection with Epsom Road, and extending in a north-easterly direction for a distance of 13.0 metres.
5. Approves, pursuant to Clause 7 of the Christchurch City Council Traffic and Parking Bylaw 2017, that the stopping of vehicles be prohibited at all times on the southeast side of Middlepark Road, commencing at its intersection with Epsom Road, and extending in a north-easterly direction for a distance of 11.5 metres.
6. Approves, pursuant to Clause 7 of the Christchurch City Council Traffic and Parking Bylaw 2017, that the stopping of vehicles be prohibited at all times on the northeast side of Epsom

Road, commencing at its intersection with Middlepark Road, and extending in a north-westerly direction for a distance of 18.0 metres.

7. Approves, pursuant to Clause 7 of the Christchurch City Council Traffic and Parking Bylaw 2017, that the stopping of vehicles be prohibited at all times on the southeast side of Epsom Road, commencing at its intersection with Middlepark Road, and extending in a south-easterly direction for a distance of 14.0 metres.
8. Approves that these resolutions take effect when parking signage and/or road markings that evidence the restrictions described in 3-7 are in place (or removed in the case of revocations).

Tyla Harrison-Hunt/Helen Broughton

Carried

9. Wigram Road maintenance depot and staff facilities

Community Board Resolved HHRB/2024/00053 Officer recommendations accepted without change

Part C

That the Waipuna Halswell-Hornby-Riccarton Community Board:

1. receives the information in the Wigram Road maintenance depot and staff facilities report;
2. notes that the decision in the report is assessed as low significance based on the Christchurch City Council's Significance and Engagement Policy;
3. approves the building of a new maintenance depot and staff facility at 141 Wigram Road as outlined in the report on the meeting agenda.

Mark Peters/Sarah Brunton

Carried

Attachments

- A Presentation - Wigram Road maintenance depot and staff facilities

10. Waipuna Halswell-Hornby-Riccarton Discretionary Response Fund Applications - Youth Development Fund Transfer, Emmanuel Christian School and Citizens Advice Bureau Christchurch Area Incorporated

Community Board Resolved HHRB/2024/00054 Officer recommendations accepted without change

Part C

That the Waipuna Halswell-Hornby-Riccarton Community Board:

1. Receives the information in the Waipuna Halswell-Hornby-Riccarton Discretionary Response Fund Applications - Youth Development Fund Transfer, Emmanuel Christian School and Citizens Advice Bureau Christchurch Area Incorporated Report.
2. Notes that the decisions in this report are assessed as low significance based on the Christchurch City Council's Significance and Engagement Policy.

3. Approves a grant of \$380 from its 2023-24 Discretionary Response Fund to Citizens Advice Bureau Christchurch Area Incorporated towards the CAB West - Hornby Secure Access project.
4. Approves a grant of \$650 from its 2023-24 Discretionary Response Fund to Emmanuel Christian School towards necessary team equipment for its combined school netball team.
5. Approves the transfer of \$1,000 from the Halswell-Hornby-Riccarton 2023-24 Discretionary Response Fund to the Halswell-Hornby-Riccarton 2023-24 Youth Development Fund.

Andrei Moore/Tyla Harrison-Hunt

Carried

11. Progress on Community Board Plan Priorities

Community Board Resolved HHRB/2024/00055 Officer recommendation accepted without change

Part C

That the Waipuna Halswell-Hornby-Riccarton Community Board:

1. Receives the information in the Progress on Community Board Plan Priorities Report.

Sarah Brunton/Mark Peters

Carried

12. Waipuna Halswell-Hornby-Riccarton Community Board Area Report - June 2024

Community Board Resolved HHRB/2024/00056 Officer recommendation accepted without change

Part B

That the Waipuna Halswell-Hornby-Riccarton Community Board:

1. Receives the information in the Waipuna Halswell-Hornby-Riccarton Community Board Area Report - June 2024.

Helen Broughton/Henk Buunk

Carried

15. Resolution to Exclude the Public Te whakataunga kaupare hunga tūmatanui

Community Board Resolved HHRB/2024/00057

Part C

That at 5.22pm the resolution to exclude the public set out on pages 182 to 183 of the agenda be adopted.

Tyla Harrison-Hunt/Andrei Moore

Carried

The public were re-admitted to the meeting at 5:27pm.

13. Waipuna Halswell-Hornby-Riccarton Community Board - Community Service and Youth Service Awards 2024

Community Board Resolved HHRB/2024/00058 Officer recommendations accepted without change

Part C

That the Waipuna Halswell-Hornby-Riccarton Community Board:

1. Receives the information in the Waipuna Halswell-Hornby-Riccarton Community Board - Community Service and Youth Service Awards 2024 Report.
2. Notes that the decisions in this report are assessed as low significance based on the Christchurch City Council's Significance and Engagement Policy.
3. Confers Community Service and Youth Service Awards on, and presents Certificates of Appreciation to the nominees listed on the Summary of Nominations 2024 (separately circulated).
4. Delegates authority to the Board Chairperson and Deputy Chairperson to decide any late nominations referred from other Community Boards.
5. Agrees that the names of successful nominees be released after the Board's Community Service Awards have been presented. Names of unsuccessful nominees will be kept confidential.

Andrei Moore/Mark Peters

Carried

14. Elected Members' Information Exchange Te Whakawhiti Whakaaro o Te Kāhui Amorangi

Part B

Board members exchanged information including in relation to:

- It was noted that a memorandum from staff on the Strengthening Communities Fund and Board projects is pending.
- The Canterbury Regional Council (Environment Canterbury) is reviewing the Canterbury Regional Policy Statement (CRPS) 2013.
- The Development of the Long Term Plan 2024-2034 is underway. Following the hearing of submissions the Council is considering proposed projects for inclusion in the Plan.
- There are concerns about pedestrian safety on Halswell Junction Road.
- There has been concern expressed about the effect of the Women's only swimming session at Matatiki. This is being investigated by staff. There has also been expressions of community support for these sessions.
- It was noted that a Hindu Temple is to be sited on Hasketts Road in the vicinity of Ruapuna Speedway .

- It was noted that the Matatiki Hornby Centre is well used and appreciated by the community and the efforts of all staff involved in its development and operation was acknowledged.
- A member has been establishing connections with local schools.
- A member has visited Kilmarnock Enterprises and observed its operations.
- It was noted that the Hornby Community Care Trust is currently looking at transforming the space in the building at 2/8 Goulding Avenue that it has been gifted by the Council.
- It was noted that the Council is considering ceasing its membership of Local Government New Zealand.
- Opportunities for professional development for members was discussed.
- There are ongoing concerns about the chlorination of the Christchurch water supply. It was noted resident access to Chlorine free Council wells is being investigated.

Karakia Whakamutunga

Meeting concluded at 6:12pm.

CONFIRMED THIS 11TH DAY OF JULY 2024

MARIE POLLISCO
CHAIRPERSON

7. Steadman Road Proposed No Stopping Restrictions

Reference Te Tohutoro: 24/900207

Responsible Officer(s) Te Pou Matua: Andrew Hensley, Traffic Engineer

Accountable ELT Member Pouwhakarae: Brent Smith, Acting General Manager City Infrastructure

1. Purpose and Origin of the Report Te Pūtake Pūrongo

- 1.1 The purpose of this report is to seek the approval of the Waipuna Halswell- Hornby- Riccarton Community Board to install no stopping restrictions on Steadman Road and at its intersection with Rosella Street, in the vicinity of the Kevin Hickman Retirement Village.
- 1.2 This report has been written in response to concerns raised by the community about restricted visibility due to parked vehicles. Staff have also identified safety issues through site visits that are also proposed to be addressed.
- 1.3 The recommended option is to install no stopping restrictions in accordance with Attachment A.

2. Officer Recommendations Ngā Tūtohu

That the Waipuna Halswell-Hornby-Riccarton Community Board:

1. Receives the information in the Steadman Road Proposed No Stopping Restrictions Report.
2. Notes that the decision in this report are assessed as low significance based on the Christchurch City Council's Significance and Engagement Policy.
3. Revokes any previous resolutions pertaining to traffic controls made pursuant to any bylaw to the extent that they are in conflict with the parking or stopping restrictions described in resolutions 4-7 below.
4. Approves that in accordance with Clause 7 of the Christchurch City Council Traffic and Parking Bylaw 2017, that the stopping of vehicles be prohibited at any time on the northwestern side of Steadman Road, commencing at its intersection with Rosella Street and extending in a south westerly direction for a distance of 18 metres, as detailed on Attachment A (Plan TG148326 Issue 1, dated 20/6/2024) to the report on the meeting agenda.
5. Approves that in accordance with Clause 7 of the Christchurch City Council Traffic and Parking Bylaw 2017, that the stopping of vehicles be prohibited at any time on the southwestern side of Rosella Street, commencing at its intersection with Steadman Road and extending in a north westerly direction for a distance of 7 metres, as detailed on Attachment A (Plan TG148326 Issue 1, dated 20/6/2024) to the report on the meeting agenda.
6. Approves that in accordance with Clause 7 of the Christchurch City Council Traffic and Parking Bylaw 2017, that the stopping of vehicles be prohibited at any time on the south eastern side of Steadman Road, commencing at a point 2 metres north east of its northern intersection with Ben Nevis Drive, and extending in a north easterly direction for a distance of 30 metres, as detailed on Attachment A (Plan TG148326 Issue 1, dated 20/6/2024) to the report on the meeting agenda.
7. Approves that in accordance with Clause 7 of the Christchurch City Council Traffic and Parking Bylaw 2017, that the stopping of vehicles be prohibited at any time on the south eastern side

of Steadman Road, commencing at a point 61 metres north east of its northern intersection with Ben Nevis Drive, and extending in a north easterly direction for a distance of 9.5 metres, as detailed on Attachment A (Plan TG148326 Issue 1, dated 20/6/2024 to the report on the meeting agenda.)

8. Approves that these resolutions take effect when parking signage and/or road markings that evidence the restrictions described in 3 - 7 are in place (or removed in the case of revocations).

3. Executive Summary Te Whakarāpopoto Matua

- 3.1 Safety concerns have been raised by residents and management from the Kevin Hickman Retirement Village about exiting the main vehicle entrance on Steadman Road. This is due to the presence of parked vehicles restricting visibility, and the speed of vehicles travelling past the site.
- 3.2 To address these issues, it is proposed to install no stopping restrictions on Steadman Road at the Kevin Hickman Retirement Village main entrance, and pedestrian crossing point at the Rosella Street / Steadman Road intersection.
- 3.3 The recommended option is to install no stopping restrictions in accordance with Attachment A.
- 3.4 The recommendations in this report will help to achieve the desired community outcome of a well-connected and accessible city through improved road safety.
- 3.5 Options within this report have been assessed against relevant industry-standard design guidance including the sight distance requirements.

4. Background/Context Te Horopaki

- 4.1 Steadman Road and Rosella Street are both local roads, within the suburb of Broomfield.
- 4.2 Staff have visited the site on a number of occasions to view the traffic and parking situation. Parking demand is relatively high in the area due to various workers vehicles, and this is anticipated to continue as the Village is further developed. Additional road markings and parking restrictions may be recommended at a later date when the permanent levels of parking demand are known.
- 4.3 Staff have also identified visibility limitations at the pedestrian crossing point across Steadman Road, immediately south of the Rosella Street intersection.
- 4.4 Traffic counts have been undertaken to measure speed and volume. Over a 7-day period the recorded average speed was 39.2km/h, and 85th percentile speed 44.9km/h. The average daily traffic volume was 3715 vehicles per day.
- 4.5 Whilst the vehicle speeds do not currently warrant prioritisation for traffic calming, there are some anticipated safety and accessibility benefits from setting a permanent speed limit of less than the current 50km/h. However, this is part of a separate broader setting of speed limits review process, and outside the scope of this report.
- 4.6 Aside from restricted visibility due to parked vehicles, the next greatest challenge to those exiting the Village is likely to be the traffic volume on Steadman Road, rather than the speed of vehicles.
- 4.7 There have been no recorded crashes in the last five years on the sections of Steadman Road and Rosella Street covered in this report. Steadman Road is classified as low collective and personal risk under Waka Kotahi's risk mapping system. Rosella Street is classified as low collective and personal risk under Waka Kotahi's risk mapping system. The Rosella Street /

Steadman Road intersection is classified as low collective and personal risk under the Council's risk mapping system.

- 4.8 If approved, the recommendations will be implemented within the current financial year (generally around four weeks after the contractor receives the request, but this is subject to other factors such as resourcing and prioritisation beyond Council's control).

Options Considered Ngā Kōwhiringa Whaiwhakaaro

- 4.9 The following reasonably practicable options were considered and are assessed in this report:

- Install No Stopping Restrictions as shown in Attachment A.
- Do Nothing.

- 4.10 The following options were considered but ruled out:

- Additional removal of on street parking. This was not progressed due to concerns that this could increase vehicle operating speeds and displace parking elsewhere along Steadman Road.

Options Descriptions Ngā Kōwhiringa

- 4.11 **Preferred Option:** Install no stopping restrictions.

4.11.1 **Option Description:** Install no stopping restrictions on Steadman Road at the Kevin Hickman Retirement Village main entrance, outside the dwellings fronting Steadman Road to the east of the main entrance, and the pedestrian crossing point at the Rosella Street / Steadman Road intersection.

4.11.2 Option Advantages

- Improves visibility for vehicles exiting the Kevin Hickman Retirement Village main entrance.
- Improves visibility for vehicles exiting the dwellings fronting Steadman Road to the east of the main entrance to the Retirement Village.
- Improves visibility at the pedestrian crossing point on Steadman Road.

4.11.3 Option Disadvantages

- Removes approximately six parking spaces.

- 4.12 Option 2- Do nothing.

4.12.1 **Option Description:** Do nothing.

4.12.2 Option Advantages

- Does not remove approximately six parking spaces.

4.12.3 Option Disadvantages

- Does not respond to community concerns to improve visibility.

5. Financial Implications Ngā Hīraunga Rauemi

Capex/Opex Ngā Utu Whakahaere

	Recommended Option	Option 2
Cost to investigate and consult, and write report	\$1500	\$1500
Cost to Implement	\$250 approximately	\$0

Maintenance/Ongoing Costs	Covered by the existing maintenance contract	\$0
Funding Source	Traffic Operations Team traffic signs and markings budget.	\$0

6. Considerations Ngā Whai Whakaaro

Risks and Mitigations Ngā Mōrearea me ngā Whakamātautau

6.1 Not applicable.

Legal Considerations Ngā Hīraunga ā-Ture

6.2 Statutory and/or delegated authority to undertake proposals in the report:

6.2.1 Part 1, Clause 7 of the Christchurch City Council Traffic and Parking Bylaw 2017 provides Council with the authority to install parking or stopping restrictions by resolution.

6.2.2 The Community Boards have delegated authority from the Council to exercise the delegations as set out in the Register of Delegations. The list of delegations for the Community Boards includes the resolution of stopping and traffic control devices.

6.2.3 The installation of any signs and/or markings associated with traffic control devices must comply with the Land Transport Rule: Traffic Control Devices 2004.

6.3 Other Legal Implications:

6.3.1 There is no other legal context, issue, or implication relevant to this decision.

6.3.2 This specific report has not been reviewed and approved by the Legal Services Unit however the report has been written using a general approach previously approved of by the Legal Services Unit, and the recommendations are consistent with the policy and legislative framework outlined in this report.

Strategy and Policy Considerations Te Whai Kaupapa here

6.4 The required decisions:

6.4.1 Align with the [Christchurch City Council's Strategic Framework](#).

6.4.2 The recommendations in this report are consistent with the Christchurch Suburban Parking Policy.

6.4.3 The decisions in this report are assessed as low significance based on the Christchurch City Council's Significance and Engagement Policy. The level of significance was determined by the low level of impact and low number of people affected by the recommended decision.

6.5 The community engagement and consultation outlined in this report reflect the assessment.

6.6 This report supports the [Council's Long Term Plan \(2021 - 2031\)](#):

6.7 Transport

6.7.1 Activity: Transport

- Level of Service: 10.0.6.1 Reduce the number of death and serious injury crashes on the local road network - <=96 crashes.

Community Impacts and Views Ngā Mariu ā-Hāpori

6.8 The requests for additional no stopping restrictions were initiated by residents and management of the Kevin Hickman Retirement Village.

- 6.9 The preferred option plan was circulated within the Village by management, and additional phone conversations and emails took place between residents and Council staff. Apart from one resident who felt the no stopping restrictions were not needed at this point in time, all responses and interactions with Council staff were considered to be supportive of the preferred option being implemented.
- 6.10 Council staff attended a Village residents groups meeting on 28 May 2024. The proposed no stopping restrictions and broader traffic and safety issues were discussed. The attendees were considered to be supportive of the preferred option. Council staff agreed to investigate further improvements in addition to those proposed in this report.
- 6.11 Management of the Kevin Hickman Retirement Village supports the preferred option.
- 6.12 The owners of 1/26 Steadman Road supports the preferred option.
- 6.13 The Team Leader Parking Compliance supports the preferred option.
- 6.14 The decision affects the following wards/Community Board areas:
- 6.14.1 Waipuna Halswell-Hornby-Riccarton.

Impact on Mana Whenua Ngā Whai Take Mana Whenua

- 6.15 The decisions do not involve a significant decision concerning ancestral land or a body of water or other elements of intrinsic value, therefore this decision does not specifically impact Mana Whenua, their culture and traditions.
- 6.16 The decision does not involve a matter of interest to Mana Whenua and will not impact on our agreed partnership priorities with Ngā Papatipu Rūnanga.


Climate Change Impact Considerations Ngā Whai Whakaaro mā te Āhuarangi

- 6.16 The proposals in this report are unlikely to contribute significantly to adaptation to the impacts of climate change or emissions reductions.
- 6.17 This is a minor proposal that is principally intended to address safety concerns at this location. Due to the minor nature of the works, it is not intended to have any impact on climate change.

7. Next Steps Ngā Mahinga ā-muri

- 7.1 If approved, staff will arrange for new road markings to be installed.

Attachments Ngā Tāpirihanga

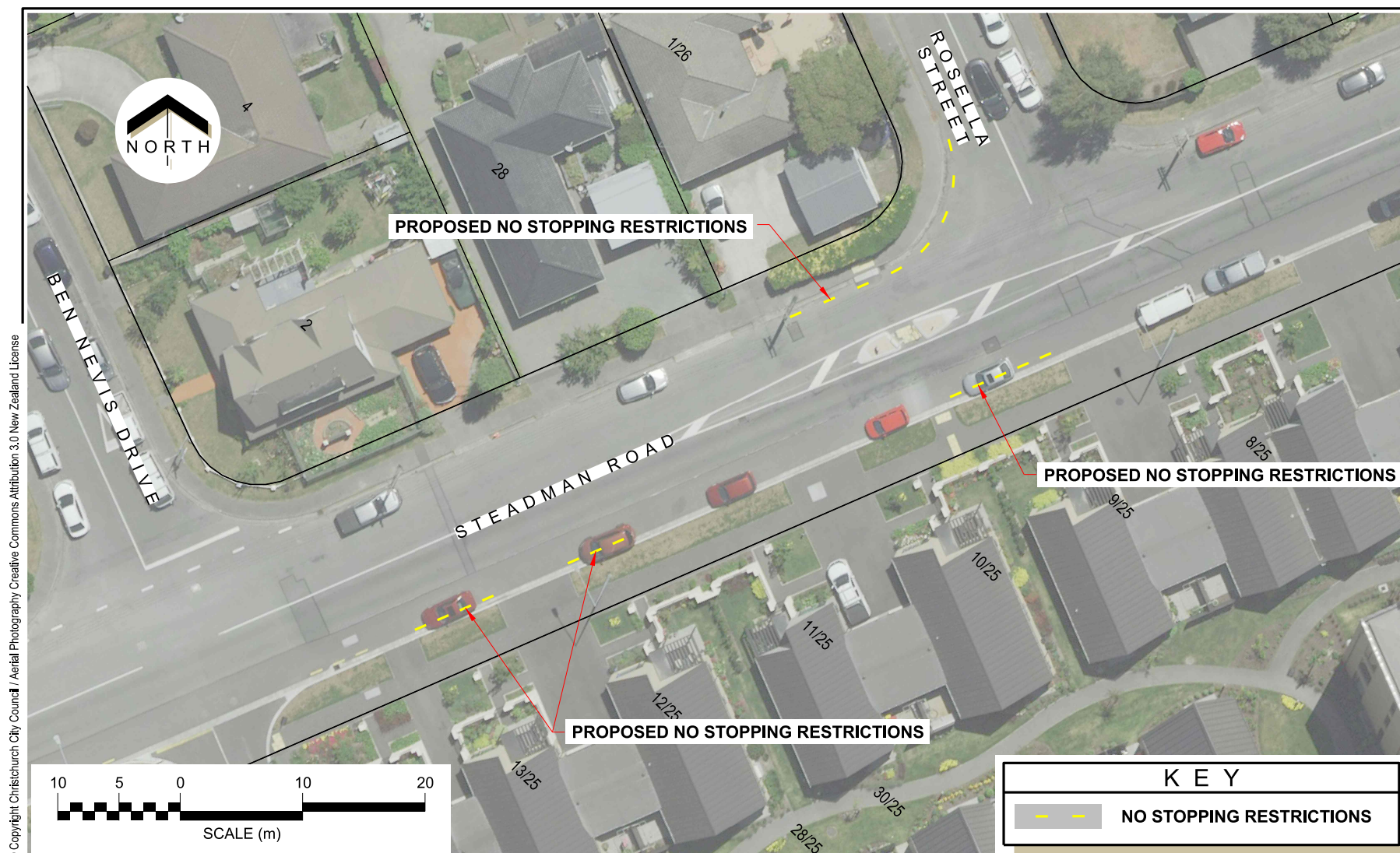
No.	Title	Reference	Page
A 	Steadman Road Proposed No Stopping Restrictions Plan tg148326	24/1098735	21

In addition to the attached documents, the following background information is available:

Document Name – Location / File Link
Not applicable

Signatories Ngā Kaiwaitohu

Author	Andrew Hensley - Traffic Engineer
Approved By	Gemma Dioni - Acting Team Leader Traffic Operations Stephen Wright - Manager Operations (Transport)



8. Packard Crescent Proposed No Stopping Restrictions

Reference Te Tohutoro: 24/892130

Responsible Officer(s) Te
Pou Matua: Andrew Hensley, Traffic Engineer

Accountable ELT
Member Pouwhakarae: Brent Smith, Acting General Manager City Infrastructure

1. Purpose and Origin of the Report Te Pūtake Pūrongo

- 1.1 The purpose of this report is to seek the approval of the Waipuna Halswell-Hornby-Riccarton Community Board to install no stopping restrictions in Packard Crescent in the vicinity of Longhurst Health.
- 1.2 This report has been written in response to both concerns raised by the community, and a Community Board Action about congestion and safety on Packard Crescent.
- 1.3 The community engagement and consultation outlined in this report reflect the assessment.
- 1.4 The recommended option is to install no stopping restrictions in accordance with Attachment A.

2. Officer Recommendations Ngā Tūtohu

That the Waipuna Halswell-Hornby-Riccarton Community Board:

1. Receives the information in the Packard Crescent Proposed No Stopping Restrictions Report.
2. Notes that the decision in this report are assessed as low significance based on the Christchurch City Council's Significance and Engagement Policy.
3. Revokes any previous resolutions pertaining to traffic controls made pursuant to any bylaw to the extent that they are in conflict with the parking or stopping restrictions described in resolutions 4- 5 below.
4. Approves that in accordance with Clause 7 of the Christchurch City Council Traffic and Parking Bylaw 2017, that the stopping of vehicles be prohibited at any time on the south eastern side of Packard Crescent commencing at its intersection with Maka Lane and extending in a north easterly direction for a distance of 17metres, as detailed on Attachment A (Plan TG148322 dated 27/5/2024) to the report on the meeting agenda.
5. Approves that in accordance with Clause 7 of the Christchurch City Council Traffic and Parking Bylaw 2017, that the stopping of vehicles be prohibited at any time on the north western side of Packard Crescent, commencing at a point 7 metres north of its intersection with Maka Lane and extending in a northerly then a north westerly direction for a distance of 29 metres, as detailed on Attachment A (Plan TG148322) to the report on the meeting agenda.
6. Approves that these resolutions take effect when parking signage and/or road markings that evidence the restrictions described in 3 – 5 are in place (or removed in the case of revocations).

3. Executive Summary Te Whakarāpopoto Matua

- 3.1 Concerns have been raised by the community about restricted road width and visibility on Packard Crescent caused by on-street parking. Implementing the noted recommendations will lead to a reduction in congestion and the risk of a crash by improving sightlines for drivers and for people crossing the road.
- 3.2 The recommended option is to Install no stopping restrictions in accordance with Attachment A.
- 3.3 The recommendations in this report will help to achieve the desired community outcome of a well-connected and accessible city through improved road safety.
- 3.4 Options within this report have been assessed against relevant industry-standard design guidance including sight distance requirements.

4. Background/Context Te Horopaki

- 4.1 Packard Crescent is a local road within the Longhurst neighbourhood.
- 4.2 Access and visibility can be limited by vehicles parking on both sides of Packard Crescent around the bend immediately south of Longhurst Health, where there is a pedestrian crossing point. Vehicles track in the centre of the road as a result, with limited opportunities to yield to an oncoming vehicle.
- 4.3 Staff have visited the site on a number of occasions, and observed relatively high parking demands in this area during business hours.
- 4.4 There have been no reported crashes in the last five years. The street is classified as low collective risk and medium personal risk under Waka Kotahi's risk mapping system. This is based on a greater length of Packard Crescent than this report covers.
- 4.5 If approved, the recommendations will be implemented within the current financial year (generally around four weeks after the contractor receives the request, but this is subject to other factors such as resourcing and prioritisation beyond Council's control).

Options Considered Ngā Kōwhiringa Whaiwhakaaro

- 4.6 The following reasonably practicable options were considered and are assessed in this report:
 - Install no stopping restrictions as shown in Attachment A.
 - Do nothing.
- 4.7 The following options were considered but ruled out:
 - Remove additional lengths of onstreet parking. This was not progressed due to concerns that it would increase vehicle operating speeds and displace parking elsewhere along Packard Crescent.

Options Descriptions Ngā Kōwhiringa

- 4.8 **Preferred Option:** Install no stopping restrictions.
 - 4.8.1 **Option Description:** Install additional no stopping restrictions on both sides of Packard Crescent at the bend.
 - 4.8.2 **Option Advantages**
 - Will lead to a reduction in congestion and the risk of a crash by improving sightlines for drivers and pedestrians.

4.8.3 Option Disadvantages

- Removes approximately four parking spaces in total.

4.9 Option 2: Do nothing.

4.9.1 Option Description: Do nothing.

4.92 Option Advantages

- Does not remove approximately four parking spaces in total .

4.9.3 Option Disadvantages

- Does not address concerns about congestion and safety for road users including pedestrians.

5. Financial Implications Ngā Hīraunga Rauemi

Capex/Opex Ngā Utu Whakahaere

	Recommended Option	Option 2 – Do Nothing
Cost to investigate and consult, and write report	\$750	\$750
Cost to Implement	\$160 approximately	\$0
Maintenance/Ongoing Costs	Covered by the existing maintenance contract	\$0
Funding Source	Traffic Operations Team traffic signs and markings budget	\$0

6. Considerations Ngā Whai Whakaaro

Risks and Mitigations Ngā Mōrearea me ngā Whakamātautau

6.1 Not applicable.

Legal Considerations Ngā Hīraunga ā-Ture

6.2 Statutory and/or delegated authority to undertake proposals in the report:

6.2.1 Part 1, Clause 7 of the Christchurch City Council Traffic and Parking Bylaw 2017 provides Council with the authority to install parking or stopping restrictions by resolution.

6.2.2 The Community Boards have delegated authority from the Council to exercise the delegations as set out in the Register of Delegations. The list of delegations for the Community Boards includes the resolution of stopping and traffic control devices.

6.2.3 The installation of any signs and/or markings associated with traffic control devices must comply with the Land Transport Rule: Traffic Control Devices 2004.

6.3 Other Legal Implications:

6.3.1 There is no other legal context, issue, or implication relevant to this decision.

6.3.2 This specific report has not been reviewed and approved by the Legal Services Unit however the report has been written using a general approach previously approved of by the Legal Services Unit, and the recommendations are consistent with the policy and legislative framework outlined in this report.

Strategy and Policy Considerations Te Whai Kaupapa here

6.4 The required decisions:

- 6.4.1 Align with the [Christchurch City Council's Strategic Framework](#).
- 6.4.2 The recommendations in this report are consistent with the Christchurch Suburban Parking Policy.
- 6.4.3 The decisions in this report are assessed as low significance based on the Christchurch City Council's Significance and Engagement Policy. The level of significance was determined by the low level of impact and low number of people affected by the recommended decision.
- 6.5 The community engagement and consultation outlined in this report reflect the assessment.
- 6.6 This report supports the [Council's Long Term Plan \(2021 - 2031\)](#):
- 6.7 Transport
 - 6.7.1 Activity: Transport
 - Level of Service: 10.0.6.1 Reduce the number of death and serious injury crashes on the local road network - <=96 crashes
 - Level of Service: 16.0.10 Maintain the perception that Christchurch is a walking friendly city - >=85% resident satisfaction

Community Impacts and Views Ngā Mariu ā-Hāpori

- 6.8 An information leaflet was delivered on 9 May 2024 to directly affected businesses, property owners and residents, inviting feedback by phone or email. These were delivered to eight businesses and 12 properties.
- 6.9 Three residents responded to the leaflet via email. All expressed that they were in favour of the proposed changes.
- 6.10 The Team Leader Parking Compliance supports the preferred option.
- 6.11 The decision affects the following wards/Community Board areas:
 - 6.11.1 Waipuna Halswell-Hornby-Riccarton Community Board.

Impact on Mana Whenua Ngā Whai Take Mana Whenua

- 6.12 The decision does not involve a significant decision concerning ancestral land or a body of water or other elements of intrinsic value, therefore this decision does not specifically impact Mana Whenua, their culture and traditions.
- 6.13 The decision does not involve a matter of interest to Mana Whenua and will not impact on our agreed partnership priorities with Ngā Papatipu Rūnanga.



Climate Change Impact Considerations Ngā Whai Whakaaro mā te Āhuarangi

- 6.16 The proposals in this report are unlikely to contribute significantly to adaptation to the impacts of climate change or emissions reductions.
- 6.17 This is a minor proposal that is principally intended to address access and safety issues at this location. Due to the minor nature of the works, it is not expected to have any impact on climate change.

7. Next Steps Ngā Mahinga ā-muri

- 7.16 If approved, staff will arrange for the new road markings to be installed.

Attachments Ngā Tāpirihanga

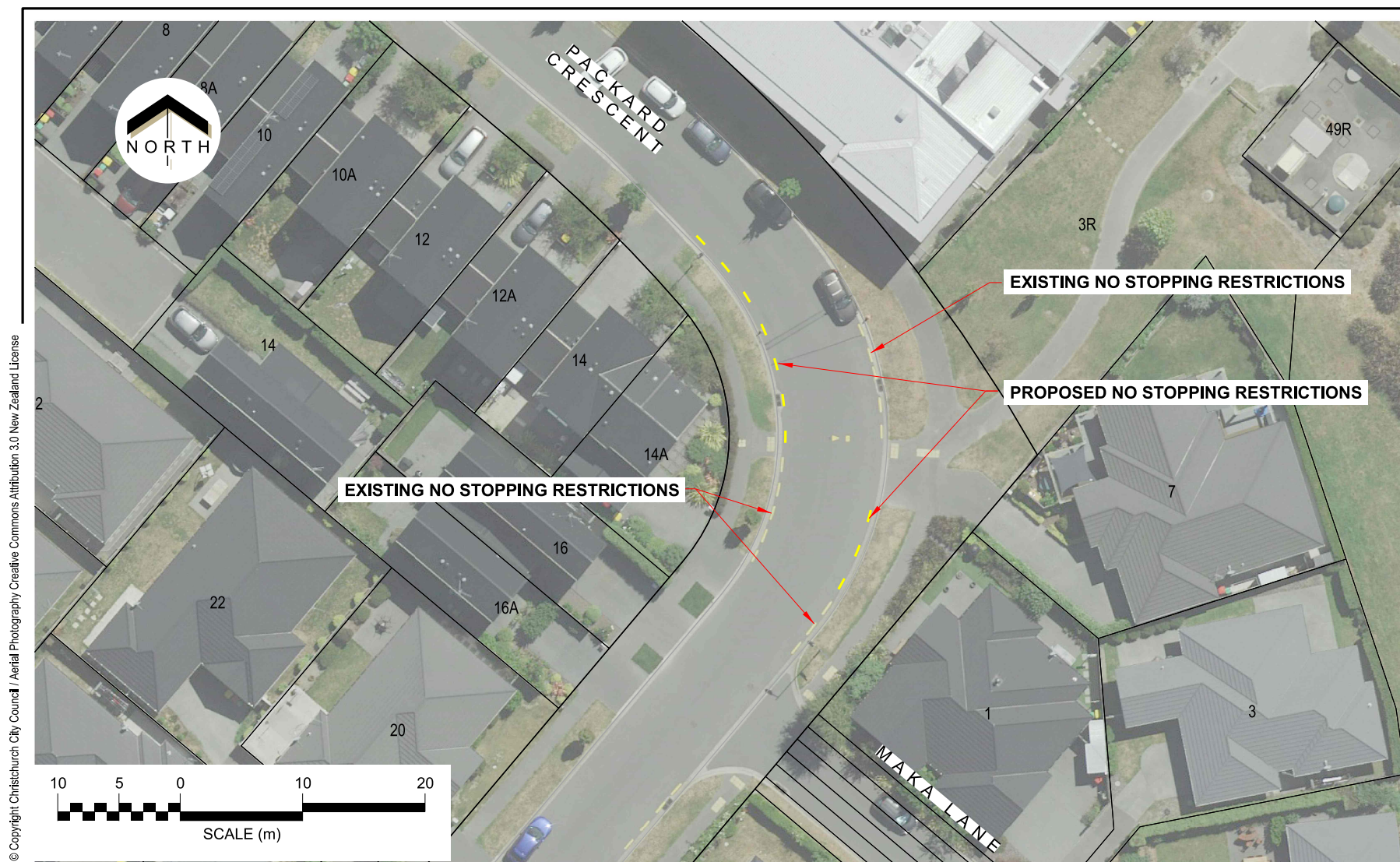
No.	Title	Reference	Page
A  	Packard Crescent Proposed No Stopping Restrictions	24/1046486	28

In addition to the attached documents, the following background information is available:

Document Name – Location / File Link
Not applicable

Signatories Ngā Kaiwaitohu

Authors	Andrew Hensley - Traffic Engineer Olivia Taylor - Engagement Assistant
Approved By	Gemma Dioni - Principal Advisor Transportation Safety Stephen Wright - Manager Operations (Transport)



Christchurch
City Council

Packard Crescent / Maka Lane
Proposed No Stopping Restrictions
For Board Approval

Original Plan Size: A4
Drawn: MJR Issue 1 27/05/2024
Designed: AH Drawing: TG148322
Approved: GD Project:

9. Shands Road Cycle Lanes

Reference Te Tohutoro: 24/790922

Responsible Officer(s) Te Gemma Dioni, Principal Advisor Transportation - Safety

Pou Matua: Andrew Hensley, Traffic Engineer

Accountable ELT

Member Pouwhakarae: Brent Smith, Acting General Manager City Infrastructure

1. Purpose and Origin of the Report Te Pūtake Pūrongo

- 1.1 The purpose of this report is for the Waipuna Halswell-Hornby-Riccarton Community Board to consider recommending to the Council the approval of cycle lanes on Shands Road.
- 1.2 The report has been written in response to an opportunity that arose through planned maintenance work, to mark cycle lanes on Shands Road to provide a continuous on-road facility for people riding bicycles.
- 1.3 There were no changes to parking or the level of service to other road users as a result of the re-marking. Staff are seeking retrospective approval for the cycle lanes.

2. Officer Recommendations Ngā Tūtohu

That the Waipuna Halswell-Hornby-Riccarton Community Board:

1. Receives the information in the Shands Road Cycle Lanes Report.
2. Notes that the decision in this report is assessed as low level significance based on the Christchurch City Council's Significance and Engagement Policy.

That the Waipuna Halswell-Hornby-Riccarton Community Board recommends that the Council:

3. Approves, pursuant to Clause 18 of the Christchurch City Council Traffic and Parking Bylaw 2017:
 - a. That a Special Vehicle Lane (Cycle) be installed on the northwest side of Shands Road commencing at it's intersection with Goulding Avenue, and extending in a westerly direction to it's intersection with Halswell Junction Road.
 - b. That a Special Vehicle Lane (Cycle) be installed on the southwest side of Shands Road commencing at it's intersection with Aymes Road, and extending in a westerly direction to it's intersection with Halswell Junction Road.
 - c. That a Special Vehicle Lane (Cycle) be installed on the southwest side of Shands Road commencing at it's intersection with Halswell Junction Road, and extending in a westerly direction for a distance of 116 metres.
4. Revokes any previous resolutions pertaining to traffic controls made pursuant to any bylaw to the extent that they are in conflict with the proposal as described in resolutions 3 above.
5. Approves that these resolutions take effect when road markings that evidence the restrictions described in 3 and 4 are in place (or removed in the case of revocations).

3. Executive Summary Te Whakarāpopoto Matua

- 3.1 In March 2024, the Traffic Operations team were informed that Shands Road was to be re-surfaced, and were asked if any further improvements could be achieved for road users when re-marking the roadway.
- 3.2 The current cycle lanes on Shands Road are not continuous and stop and start along the corridor. When re-sealing the road, new road marking is also required, and it was possible to create continuous cycle lanes, without affecting parking or the level of service for other road users.
- 3.3 The Area Engineer and the Transport Operations Manager met with Councillor Mark Peters on Monday 11 March 2024 to discuss the opportunity. There was support for this to proceed. This report is seeking retrospective approval for the cycle lanes.

4. Background/Context Te Horopaki

- 4.1 The resurfacing of a section of Shands Road from Halswell Junction Road in the southwest to Aymes Road/Goulding Avenue in the northeast was programmed for April 2024. It was to be an asphalt surface.
- 4.2 Traffic Operations were informed by the Maintenance Team of the upcoming work in March 2024, and asked if there were any changes to line marking that were required. The Area Engineer was aware of a ticket that had been received about Shands Road in terms of lack of continuous cycle facilities. The missing connection for people riding westbound from Halswell Junction Road to the Little River Rail Trail had also been previously discussed with the Network Planning team. Traffic Operations therefore produced a plan without removing any car parking or affecting levels of service for other road users.
- 4.3 There have been no previous memos or information sessions/workshops on this project.

Options Considered Ngā Kōwhiringa Whaiwhakaaro

- 4.4 The following reasonably practicable options were considered and are assessed in this report:
 - Preferred option
 - Wait for a future capital project to deliver the improvements to the cycle lanes.

Options Descriptions Ngā Kōwhiringa

- 4.5 **Preferred Option:** Retain the continuous cycle lanes on Shands Road that have been marked as part of the maintenance work.
 - 4.5.1 **Option Description:** This option includes retaining the marked continuous cycle lanes that were implemented as part of the re-marking of the road following the re-seal being undertaken by maintenance.
 - 4.5.2 **Option Advantages**
 - Provision of continuous cycle lanes at minimal cost, due to the carriageway having to be re-marked post re-seal. The coloured surfacing cost approximately \$60k.
 - 4.5.3 **Option Disadvantages**
 - There would be additional costs to remove the cycle lanes if not approved.
 - Reputational risk if not approved due to removal of new road marking on new road surface.
- 4.6 There are no alternative options presented in this report.

5. Financial Implications Ngā Hīraunga Rauemi

Capex/Opex Ngā Utu Whakahaere

	Recommended Option
Cost to Implement	\$0 already installed and completed within the maintenance works. If not approved, we would remove the cycle symbols and green surfacing.
Cost to prepare report – Opex from Traffic Operations Staff Budget	\$750
Maintenance/Ongoing Costs	Minimal cost to overall maintenance contract
Funding Source	Maintenance Budget
Impact on Rates	No impact on rates

6. Considerations Ngā Whai Whakaaro

Risks and Mitigations Ngā Mōrearea me ngā Whakamātautau

- 6.1 There is a risk that if this report is not approved, that the changes to road markings will need to be removed which is an additional cost to Council.

Legal Considerations Ngā Hīraunga ā-Ture

- 6.2 Statutory and/or delegated authority to undertake proposals in the report:
- 6.2.1 The Community Boards have delegated authority from the Council to exercise the delegations as set out in the Register of Delegations. The list of delegations for the Community Boards includes the resolution of stopping and traffic control devices.
 - 6.2.2 The installation of any signs and/or markings associated with traffic control devices must comply with the Land Transport Rule: Traffic Control Devices 2004.
- 6.3 Other Legal Implications:
- 6.3.1 There is no other legal context, issue, or implication relevant to this decision.
 - 6.3.2 This specific report has not been reviewed and approved by the Legal Services Unit however the report has been written using a general approach previously approved of by the Legal Services Unit, and the recommendations are consistent with the policy and legislative framework outlined in this report.

Strategy and Policy Considerations Te Whai Kaupapa here

- 6.4 The required decisions:
- 6.4.1 Align with the [Christchurch City Council's Strategic Framework](#).
 - 6.4.2 Is assessed as low significance based on the Christchurch City Council's Significance and Engagement Policy. The level of significance was determined by the low level of impact and low number of people affected by the recommended decision.
 - 6.4.3 Are consistent with Council's Plans and Policies.
- 6.5 This report supports the [Council's Long Term Plan \(2021 - 2031\)](#):
- 6.6 Transport
- 6.6.1 Activity: Transport

- Level of Service: 10.0.6.1 Reduce the number of death and serious injury crashes on the local road network - ≤ 96 crashes
- Level of Service: 10.5.2 Improve the perception that Christchurch is a cycling friendly city - $\geq 67\%$ resident satisfaction
- Level of Service: 10.5.1 Limit deaths and serious injury crashes per capita for cyclists and pedestrians - ≤ 12 crashes per 100,000 residents

Community Impacts and Views Ngā Mariu ā-Hāpori

- 6.7 Due to the timing of the request to completion of the work on-site, there was no time for an engagement process to be undertaken. However, as the scheme did not remove any car parking, nor did it affect levels of service for people who drive, there was limited scope for feedback on the proposal.
- 6.8 The decision affects the following wards/Community Board areas:
- 6.8.1 Waipuna Halswell-Hornby-Riccarton.

Impact on Mana Whenua Ngā Whai Take Mana Whenua

- 6.9 The decision does not involve a significant decision concerning ancestral land or a body of water or other elements of intrinsic value, therefore this decision does not specifically impact Mana Whenua, their culture and traditions.
- 6.10 The decision does not involve a matter of interest to Mana Whenua and will not impact on our agreed partnership priorities with Ngā Papatipu Rūnanga.
- 6.11 The decision includes minor work which is contained within the roadway.



Climate Change Impact Considerations Ngā Whai Whakaaro mā te Āhuarangi

- 6.12 The decisions in this report are likely to:
- 6.12.1 Contribute positively to adaptation to the impacts of climate change.
- 6.12.2 Contribute positively to emissions reductions.
- 6.13 This proposal includes measures to encourage people to cycle and therefore will result in positive changes to reduce carbon emissions and the effects of Climate Change.

7. Next Steps Ngā Mahinga ā-muri

- 7.1 There are no further steps.

Attachments Ngā Tāpirihanga

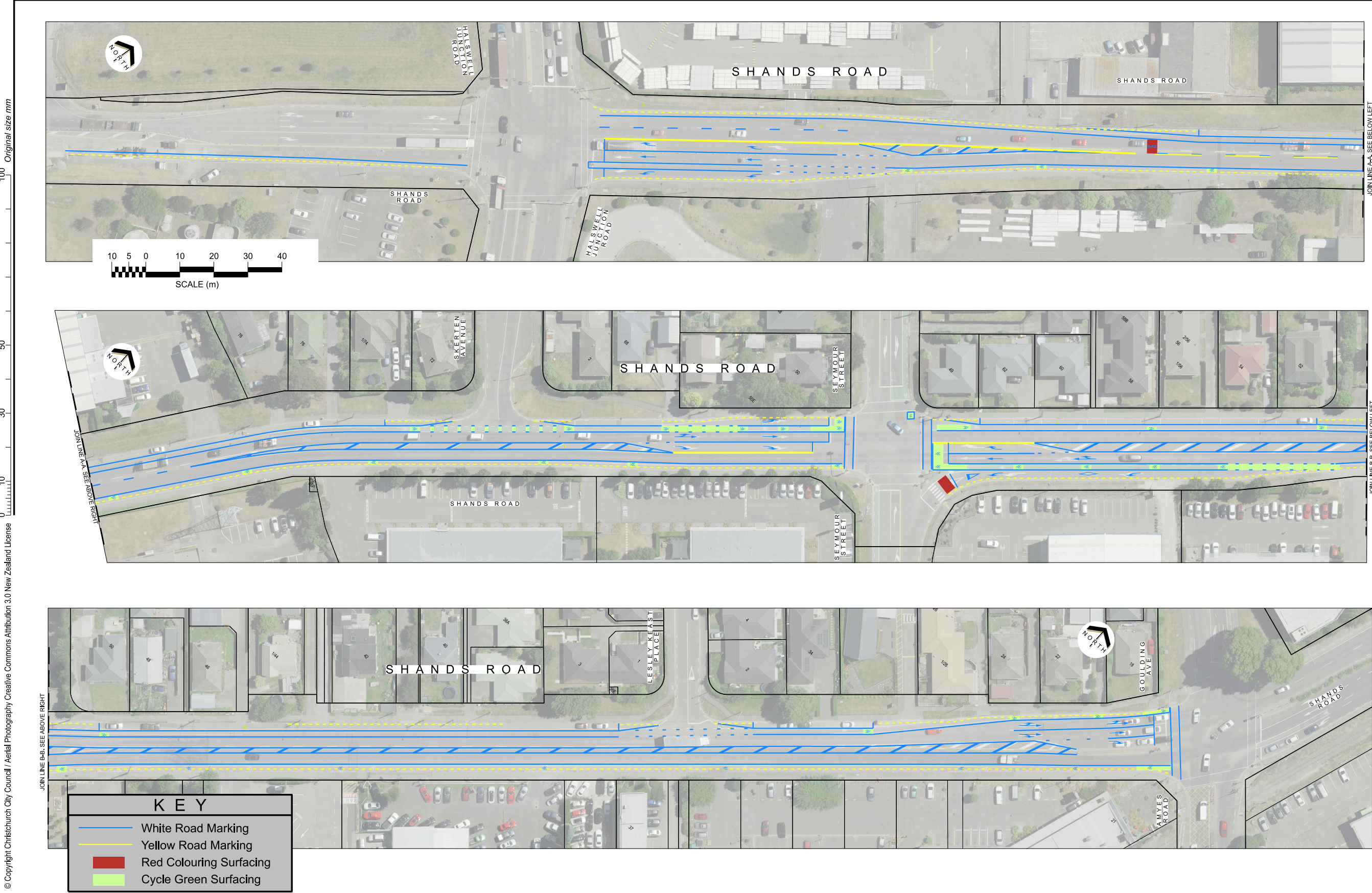
No.	Title	Reference	Page
A  	Shands Road Cycle Lanes - Plan for approval	24/863217	34

In addition to the attached documents, the following background information is available:

Document Name – Location / File Link
Not applicable

Signatories Ngā Kaiwaitohu

Authors	Gemma Dioni - Principal Advisor Transportation Safety Andrew Hensley - Traffic Engineer
Approved By	Katie Smith - Team Leader Traffic Operations Stephen Wright - Manager Operations (Transport)



10. Proposed Road Names - 301R Wigram Road

Reference Te Tohutoro: 24/999490

Responsible Officer(s) Te Pou Matua: Sean Ward, Team Leader Planning

Accountable ELT Member Pouwhakarae: John Higgins, General Manager Strategy, Planning & Regulatory Services

1. Purpose and Origin of the Report Te Pūtake Pūrongo

- 1.1 The purpose of this report is for the Waipuna Halswell-Hornby-Riccarton Community Board to approve the proposed road names at 301R Wigram Road, Hornby.
- 1.2 The report is staff-generated resulting from a naming request received from the developer.

2. Officer Recommendations Ngā Tūtohu

That the Waipuna Halswell-Hornby-Riccarton Community Board:

1. Receives the information in the Proposed Road Names - 301R Wigram Road Report.
2. Notes that the decision in this report is assessed as low significance based on the Christchurch City Council's Significance and Engagement Policy.
3. Approves the following new road names for 301R Wigram Road (RMA/2020/85)
 - a. Road 1 - Punjab Place
 - b. Lane 1 - Naduru Lane

3. Detail Te Whakamahuki

Introduction Te Whakatkinga

- 3.1 A road naming request has been submitted by the developer. Preferred names and alternative names have been put forward for the roads.
- 3.2 The recommended road names have been checked against existing road names in Christchurch and bordering districts, for duplication, alternative spelling, or other similarities in spelling or pronunciation to avoid the potential for confusion. The proposed names are considered sufficiently different to existing road names.
- 3.3 The recommended road names have been checked against the Council's Naming Policy dated 15 November 2023 and are considered to be consistent with this policy. The specific criteria for assessing a name from clause 2 is set out below.
 - 3.3.1 A traditional or Māori name which is acceptable to the Rūnanga or Iwi; this may be a name reflecting the physical characteristics of an area, an activity or event associated with the area or of a notable ancestor.
 - 3.3.2 A feature of historical, social, cultural, environmental or physical importance in the area (e.g., Carlton Mill Road or Carlton Mill Reserve*).
 - 3.3.3 The name of a notable family, person or event associated with the locality or with the wider Christchurch area.
 - 3.3.4 A name in recognition of a person's service. This can be for community service, conservation, sport, the arts, science and research or other sphere of activity.

- 3.3.5 Consistency with a common or established theme for naming in a subdivision or locality.
- 3.3.6 A name that reflects the diverse cultures and communities of the locality or of Christchurch generally.
- 3.3.7 The name of an event or activity strongly associated with the immediate location including an informal name for the area that is (or was historically) in common usage.
- 3.3.8 A name associated with a person, event or activity of significance to Christchurch including names associated with people, events, or places of national and international significance.
- 3.4 The criteria for names that are not suitable for approval from clause 6 is set out below.
 - 3.4.1 Names of people, flora, fauna or geographical features not associated with the area, e.g., names of native trees which are not present in the area or views that cannot be identified, except where the name continues a current naming theme in the locality.
 - 3.4.2 Currently trading commercial organisations except for sponsorship names for facilities and leased parks.
 - 3.4.3 Anagrams, amalgamations or derivatives of people's names.
 - 3.4.4 Names of living persons.
 - 3.4.5 Names related to the developer of a subdivision.
 - 3.4.6 Name of a person, club or organisation associated with a privately owned building on Council land, where the club or organisation does not hold the ground lease for the building.
 - 3.4.7 Names for roads which may cause confusion because they are associated with another geographical location or feature e.g., Parklands Drive which is not located in the Parklands suburb.
- 3.5 The recommended road names have also been checked against the Australia and New Zealand Standard AS/NZS 4819:2011 Rural and Urban Addressing. The names are considered to be consistent with the Standard.
- 3.6 Under the Roads and Right-of-Way Naming Policy, the names considered must be requested by the developer. There is no ability to consider alternative names without first checking whether there are any duplications or similarities with other road and right-of-way names.
- 3.7 Consultation has been undertaken with Land Information New Zealand who have raised no concerns with the proposed road names.
- 3.8 Consultation under the policy with rūnanga is not required because the roads to be named are not collector roads and/or sites of significance under the District Plan (clause 3 of the Naming Policy).
- 3.9 No addresses of neighbouring properties are affected by the proposed road naming (clause 12.2 of the Naming Policy).
- 3.10 The names requested have been accompanied by an explanation of the background of the names, which is summarised below.

Assessment of Significance and Engagement Te Aromatawai Whakahirahira

- 3.11 The decisions in this report are assessed as low significance based on the Christchurch City Council's Significance and Engagement Policy.
- 3.12 The level of significance was determined by the number of people affected and/or with an interest.
- 3.13 Due to the assessment of low significance, no further community engagement and consultation is required.


Proposed Names

- 3.14 The proposed roads are shown in **Attachment A**.
- 3.15 Road names for this subdivision were originally approved in June 2021 as 'Nandura Place' and 'Punjab Lane', however the developer now wishes to swap which name went with the road/right of way, as well as proposing a new name for the right of way, as the originally submitted name was not as the developer intended. The subdivision has not yet been completed, but construction is underway.
- 3.16 The below names are Indian names to reflect one of the ethnic groups in the area. 2018 census data shows that statistically the cultural diversity of Awatea South is well represented by ethnic groups from the Asian region, at 41.8% of the local population. The number of ethnic groups has increased markedly since 2006. This increase in diversity represents an opportunity to establish cultural identifiers through the use of street names familiar to the community.
- 3.17 Road 1 - Punjab Place
- 3.18 Punjab is a state in northwestern India. Forming part of the larger Punjab region of the Indian subcontinent. The word Punjab is a compound of the Persian words panj (five) and āb (waters). This roughly translates to 'the land of five rivers', referring to the rivers Jhelum, Chenab, Ravi, Sutlej, and Beas. All are tributaries of the Indus River.
- 3.19 Lane 1 - Naduru Lane
- 3.20 Naduru is a small village/hamlet in Sagar Taluk in Shimoga District of Karnataka State, India. It comes under Channagonda Panchayath and belongs to Bangalore Division. It is located 107km west from District head quarters Shivamogga, 41km from Sagar and 388km from State capital Bangalore. Naduru is surrounded by Honavar Taluk to the North, Sagar Taluk to the East, Kundapura Taluk to the South, and Siddapur Taluk to the North.

Assessment of Names

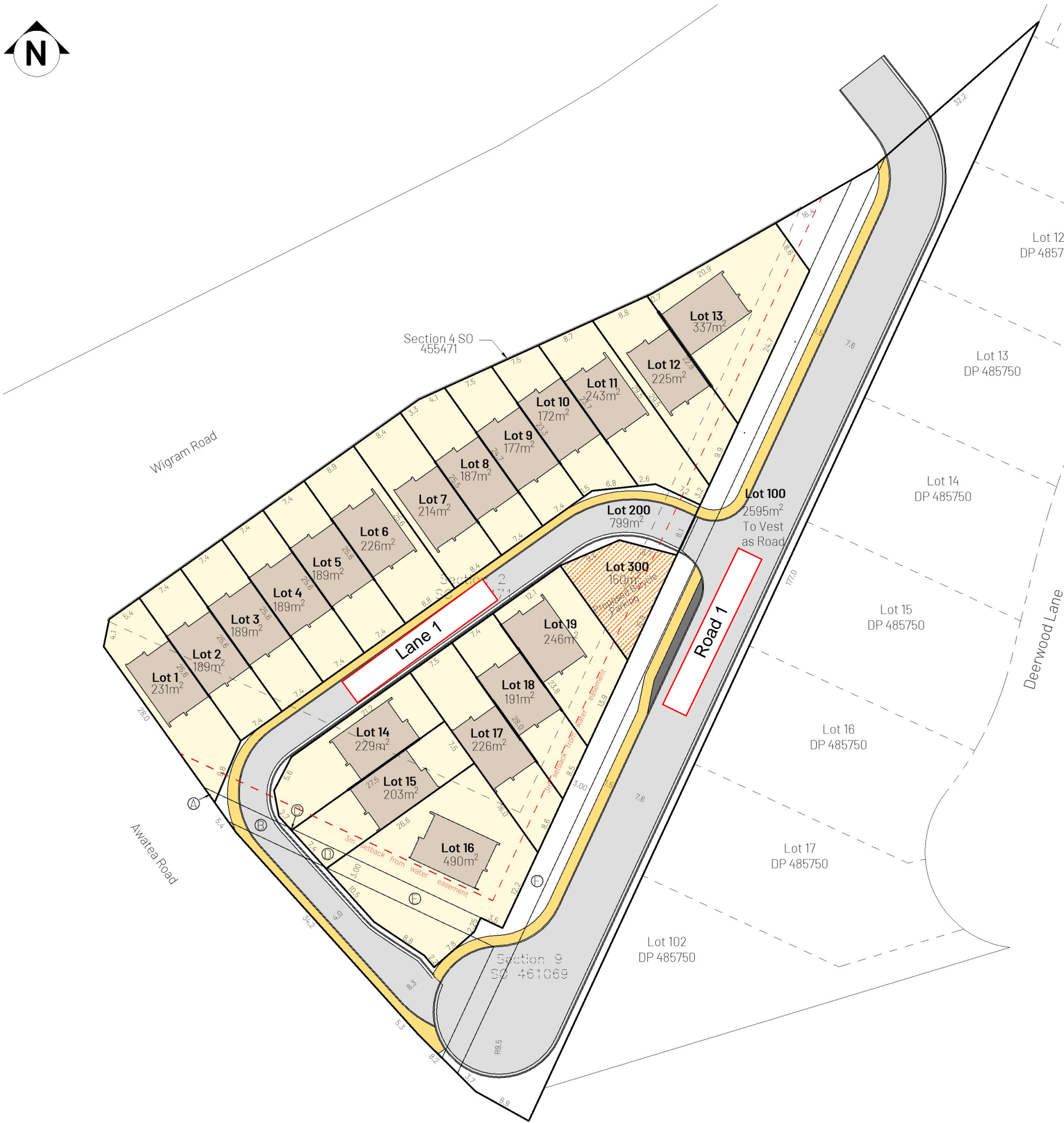
- 3.21 The above names are considered to be consistent with the policy.

Attachments Ngā Tāpirihanga

No.	Title	Reference	Page
A 	RMA/2020/85 - Proposed Road Naming Plan - 301R Wigram Road	21/667010	39

Signatories Ngā Kaiwaitohu

Authors	Leashelle Miller - Planning Technician Sean Ward - Team Leader Planning
Approved By	Mark Stevenson - Acting Head of Planning & Consents



This plan is prepared for the purpose of obtaining subdivision consent. The boundaries, dimensions & areas shown on this plan are subject to survey.

Please see sheets 2 and 3 for easements

A full assessment of the easements required will be undertaken after the survey has been completed. This may result in additional easements to those already shown.

Comprised in: RsT 617003 & 627982
 Owner: Three Angels Holdings (2010)Ltd
 Zone: Residential New Neighbourhood

Total Area: 7906m²

Vesting
 Lot 100 to Vest as Road

Lots in Common
 Lot 200 hereon (legal access) to be held as to 13 undivided shares by the owners of lots 1 - 11, 14 & 15 hereon as tenants in common and individual records of title be issued

Lot 300 hereon (Bicycle Parking) to be held as to 19 undivided shares by the owners of lots 1 - 19 hereon as tenants in common and individual records of title be issued

Existing Easements			
Purpose	Shown	Burdened	Document
Right to drain water	A	Lot 1	EI 9804841.1
	B	Lot 200	
	C	Lot 14	
	D	Lot 15	
	E	Lot 16	
	F	Lot 100	

Proposed Subdivision of Sec 2 SO 455471 & Sec 9 SO 41069			
Scale	1:600 at A3		
Date	14 August 2019		
Client	H Singh		
Drawn	JFI		
Review	GTA		
A	04/09	client issue	
B	21/10	for consent	
C	10/11	FP width changed	
D	24/11	Kb threshold added	
E	3/3/21	add water easement	
Rev.	Date	Amendment	
Revision		E	
Sheet		1 of 3	

11. Newbridge Place - Mobility Parking and P120 Parking Restrictions Amendment

Reference Te Tohutoro: 24/794557

Responsible Officer(s) Te Edwin Tiong, Transport Engineer, Traffic Operations
Pou Matua: Edwin.Tiong@ccc.govt.nz

Accountable ELT
Member Pouwhakarae: Brent Smith, Acting General Manager City Infrastructure

1. Purpose and Origin of the Report Te Pūtake Pūrongo

- 1.1 For the Waipuna Halswell-Hornby-Riccarton Community Board to approve an amendment to the existing mobility parking restrictions, and extend the existing P120 parking restrictions on the southern side of Newbridge Place.
- 1.2 This report has been written in response to requests from residents for the mobility parking in Newbridge Place to be removed.
- 1.3 The recommended option is to reduce the number of mobility parks from four to one and extend the P120 parking restrictions in accordance with Attachment A.

2. Officer Recommendations Ngā Tūtohu

That the Waipuna Halswell-Hornby-Riccarton Community Board:

1. Receives the information in the Newbridge Place - Mobility Parking and P120 Parking Restrictions Amendment Report.
2. Notes that the decisions in this report are assessed as low significance based on the Christchurch City Council's Significance and Engagement Policy.
3. Revokes any previous resolutions pertaining to traffic controls made pursuant to any bylaw to the extent that they are in conflict with the parking or stopping restrictions described in resolutions 4a – 4b below.
4. Approves that in accordance with Clause 7 of the Christchurch City Council Traffic and Parking Bylaw 2017, that:
 - a. The parking of vehicles be reserved for vehicles with an approved mobility parking permit, prominently displayed in the vehicle, on the southern side of Newbridge Place, commencing at a point 214 metres west of its intersection with Maidstone Road and extending in a easterly direction for a distance of 7.0 metres.
 - b. The parking of vehicles be restricted to a maximum period of 120 minutes on the southern side of Newbridge Place, commencing at a point 207 metres west of its intersection with Maidstone Road and extending in a easterly direction for a distance of 16.0 metres. This restriction is to apply from March to November, Monday to Friday and between the times of 9am and 5pm.
5. Approves that these resolutions take effect when parking signage and/or road markings that evidence the restrictions described in 3 and 4 are in place (or removed in the case of revocations).

3. Executive Summary Te Whakarāpopoto Matua

- 3.1 Residents have raised concerns about the scarcity of parking on Newbridge Place. The Laura Fergusson Trust was previously based at No.23 Newbridge Place, and provided housing for people with physical disabilities. As the trust has moved the four mobility parking spaces are no longer required.
- 3.2 However, a resident at No.25 still has demand for mobility parking, and provision for them is recommended to continue in this case given these are existing mobility parking spaces in place.
- 3.3 The recommended option is to reduce the number of mobility parks from four to one and to extend with P120 parking restrictions in accordance with Attachment A.

4. Background/Context Te Horopaki

- 4.1 There are approximately thirty unrestricted kerbside parking spaces on the northern side of Newbridge Place and twenty-one P120 9am-5pm, Monday to Friday, March to November restricted kerbside parking on the southern side of Newbridge Place. The parking is observed to be fully occupied during university terms. Parking demand is also generally high on Newbridge Place.
- 4.2 The existing four mobility parks are marked parallel to the kerb on the southern side of Newbridge Place.
- 4.3 The recommended option is to maintain one mobility parking space, and allow for an additional three P120 parking spaces, consistent with the other parking restrictions on the southern side of the street. Unrestricted parking will remain on the northern side of the street.
- 4.4 The proposal is consistent with Council's Suburban Parking Policy which prioritises mobility parking over other short stay, resident, or commuter parking.
- 4.5 Approval is required by the Waipuna Halswell-Hornby-Riccarton Community Board.
- 4.6 If approved, the recommendations will be implemented within the current financial year (generally around four weeks after the contractor receives the request, but this is subject to other factors such as resourcing and prioritisation beyond Council's control).

Options Considered Ngā Kōwhiringa Whaiwhakaaro

- 4.7 The following reasonably practicable options were considered and are assessed in this report:
 - Recommended option – Replace three of the mobility parking spaces with three P120 parking restriction spaces and maintain one mobility parking space.
 - Option 2 – Replace two mobility parking space with two P120 parking restriction spaces and maintain two mobility parking spaces.
 - Option 3 – Do nothing.

Options Descriptions Ngā Kōwhiringa

- 4.8 **Preferred Option:** Replace three mobility parking spaces with three P120 parking restriction spaces and maintain one mobility parking space in accordance with Attachment A.

4.8.1 Option Advantages

- This proposal is intended to provide safe and accessible parking option for anyone holding a mobility parking permit while increasing the availability of P120 parking restriction spaces on Newbridge Place.

4.8.2 Option Disadvantages

- None identified.

4.9 **Option 2:** Replace two mobility parking spaces with two P120 parking restriction spaces and maintain two mobility parking spaces.

4.9.1 **Option Advantages**

- This proposal is at the request of the resident holding a mobility parking permit who also requested an additional mobility parking space for his visitors who are also mobility parking permit holders. It is noted that a mobility card holder can also park within a P120 parking restriction space.

4.9.2 **Option Disadvantages**

- This does not fully address the other local residents request to improve parking situation on Newbridge Place when parking demands are high. The additional mobility parking space can only be used by holders of a mobility parking permit.

4.10 **Option 3:** Do nothing.

4.10.1 **Option Advantages**

- No cost to Council.

4.10.2 **Option Disadvantages**

- This option retains four mobility parking spaces, which are under utilised.
- This does not address the residents request to improve parking situation on Newbridge Place when parking demands are high.

5. Financial Implications Ngā Hīraunga Rauemi

Capex/Opex Ngā Utu Whakahaere

	Recommended Option – Maintain 1 mobility parking space	Option 2 – Maintain 2 mobility parking spaces	Option 3 – Do Nothing
Cost to Implement	\$1,500 for signs and markings	\$2,000 for signs and markings	\$0
Operational	\$1,500 for staff time (reporting and investigation)	\$1,500 for staff time (reporting and investigation)	\$1,500 for staff time (reporting and investigation)
Maintenance/Ongoing Costs	\$200 per annum	\$250 per annum	\$0
Funding Source Capex	Traffic Operations Signs and Markings budget	Traffic Operations Signs and Markings budget	N/A
Opex	Traffic Ops staff costs	Traffic Ops staff costs	
Funding Availability	Immediate	Immediate	N/A
Impact on Rates	Negligible	Negligible	N/A

6. Considerations Ngā Whai Whakaaro

Risks and Mitigations Ngā Mōrearea me ngā Whakamātautau

6.1 None identified.

Legal Considerations Ngā Hiraunga ā-Ture

- 6.2 Statutory and/or delegated authority to undertake proposals in the report:
- 6.2.1 Part 1, Clause 7 of the Christchurch City Council Traffic and Parking Bylaw 2017 provides Council with the authority to install parking or stopping restrictions by resolution.
 - 6.2.2 The Community Boards have delegated authority from the Council to exercise the delegations as set out in the Register of Delegations. The list of delegations for the Community Boards includes the resolution of stopping and traffic control devices.
 - 6.2.3 The installation of any signs and/or markings associated with traffic control devices must comply with the Land Transport Rule: Traffic Control Devices 2004.
- 6.3 Other Legal Implications:
- 6.3.1 There is no other legal context, issue, or implication relevant to this decision.
 - 6.3.2 This specific report has not been reviewed and approved by the Legal Services Unit however the report has been written using a general approach previously approved of by the Legal Services Unit, and the recommendations are consistent with the policy and legislative framework outlined in this report.

Strategy and Policy Considerations Te Whai Kaupapa here

- 6.4 The required decision:
- 6.4.1 Align with the [Christchurch City Council's Strategic Framework](#).
 - 6.4.2 The recommendations in this report are consistent with the Christchurch Suburban Parking Policy.
 - 6.4.3 The decisions in this report are assessed as low significance based on the Christchurch City Council's Significance and Engagement Policy. The level of significance was determined by the low level of impact and low number of people affected by the recommended decision.
- 6.5 The community engagement and consultation outlined in this report reflect the assessment.
- 6.6 This report supports the [Council's Long Term Plan \(2021 - 2031\)](#):
- 6.7 Transport
- 6.7.1 Activity: Transport
 - Level of Service: 10.3.3 Maintain customer perception of the ease of use of Council on- street parking facilities - >=50% resident satisfaction

Community Impacts and Views Ngā Mariu ā-Hāpori

- 6.8 Twelve affected property owners and residents were advised of the recommended option by letter and invited to make a submission. There were two submissions received, one in support of the proposal, the other one received three days after the submission closed would like to have two mobility parks available to him and potential disabled visitors.
- 6.9 The resident holding mobility parking permit has two vehicles, but there is only one mobility parking space available for the resident. However, their own driveway can accommodate up to three vehicles.
- 6.10 The Team Leader Parking Compliance supports the preferred option.
- 6.11 The do nothing option is inconsistent with residents request to improve parking situation on Newbridge Place.

- 6.12 The decision affects the following wards/Community Board areas:
- 6.12.1 Waipuna Halswell-Hornby-Riccarton Community Board.

Impact on Mana Whenua Ngā Whai Take Mana Whenua

- 6.13 The decision does not involve a significant decision concerning ancestral land or a body of water or other elements of intrinsic value, therefore this decision does not specifically impact Mana Whenua, their culture and traditions.
- 6.14 The decision does not involve a matter of interest to Mana Whenua and will not impact on our agreed partnership priorities with Ngā Papatipu Rūnanga.
- 6.15 The effects of this proposal upon Mana Whenua are expected to be insignificant.


Climate Change Impact Considerations Ngā Whai Whakaaro mā te Āhuarangi

- 6.16 The proposals in this report are unlikely to contribute significantly to adaptation to the impacts of climate change or emissions reductions.
- 6.17 The proposal is principally about accessibility. Due to the minor nature of the works, it is not expected to have any significant effect upon carbon emissions and Climate Change.

7. Next Steps Ngā Mahinga ā-muri

- 7.1 If approved, the recommendations will be implemented in the next financial year (generally around four weeks after the contractor receives the request, but this is subject to other factors such as resourcing and prioritisation beyond Council’s control).

Attachments Ngā Tāpirihanga

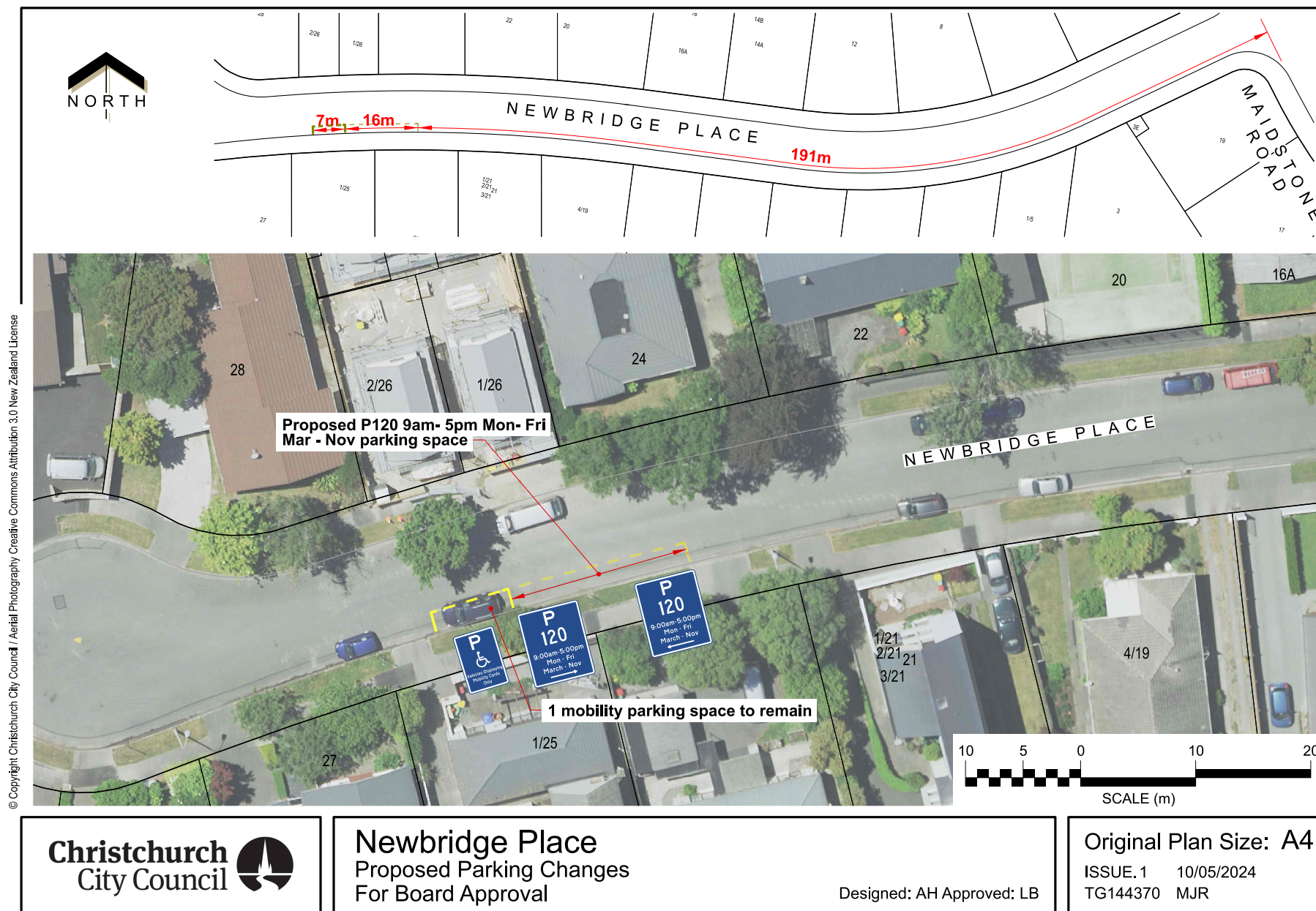
No.	Title	Reference	Page
A 	Newbridge Place - Mobility Parking and P120 Parking Restrictions Amendment drawing TG144370 For Board Approval	24/874230	46

In addition to the attached documents, the following background information is available:

Document Name – Location / File Link
Not applicable

Signatories Ngā Kaiwaitohu

Author	Edwin Tiong - Traffic Engineer
Approved By	Katie Smith - Team Leader Traffic Operations Stephen Wright - Manager Operations (Transport)



12. Waipuna Halswell-Hornby-Riccarton Community Board Area Report - July 2024

Reference Te Tohutoro: 24/944505

Responsible Officer(s) Te Pou Matua: Bailey Peterson, Acting Community Governance Manager

Accountable ELT Member Pouwhakarae: Andrew Rutledge, Acting General Manager Citizens and Community

1. Purpose of Origin of the Report Te Pūtake Pūrongo

- 1.1 This report provides the Board with an overview of initiatives and issues current within the Community Board area.
- 1.2 This report is staff-generated monthly.

2. Officer Recommendations Ngā Tūtohu

That the Waipuna Halswell-Hornby-Riccarton Community Board:

- 1. Receives the information in the Waipuna Halswell-Hornby-Riccarton Community Board Area Report - July 2024.

3. Community Support, Governance and Partnership Activity

3.1 Community Governance Projects

Activity	Detail	Timeline	Strategic Alignment
Summer with your neighbours	Summer with your neighbours is about bringing people closer together and celebrating the unique and diverse mix of each neighbourhood. Applications for funding assistance to hold Summer with your Neighbours events open on 13 July 2024 and closes 11 August 2024. Applications for a small funding subsidy can be made online at: ccc.govt.nz/GetTogether	Ongoing	Te Haumako Te Whitingia Strengthening Communities Together Strategy
Community Service and Youth Service Awards 2024	As a trial, this year the Board has decided to deliver Community Service Award certificates in person, preferably to the recipient's place of service/volunteering, to recognise their service in the space where their work is done and in front of fellow volunteers and colleagues. There will be a number of opportunities for the Board to present to recipients in the upcoming months.	Ongoing	Te Haumako Te Whitingia Strengthening Communities Together Strategy

3.2 Community Funding Summary

3.2.1 For information, a summary is provided on the status of the Board's 2023-24 funding as at June 2024 (refer **Attachment A**).

3.2.2 Off the Ground Fund

Under authority delegated by the Community Board the following allocation was made in June 2024:

- \$400 to Hornby Community Care Centre Trust towards its Expanded Centre Engagement Project.

3.2.3 Swimming Accessibility and Activation Fund

Under authority delegated by the Community Board the following allocation was made in June 2024:

- \$1,000 to Nepal New Zealand Friendship Society of Canterbury Incorporated towards Empower Her: Weekly Swimming Sessions for Women.

3.2.4 Youth Development Fund

Under authority delegated by the Community Governance Manager the following allocation was made in June 2024:

- \$200 to Benjamin Habinshuti towards participating in the under-16 National Basketball Tournament 2024 in Auckland.

Under authority delegated by the Community Board the following allocations were made in June 2024:

- \$500 to Jonathon Fry towards participating in the IMG Academy Junior World Golfing Championships, World Stars of Junior Golf Championships and Callaway Future Championships to be held in the USA.
- \$200 to Noah Crossan towards participating in the National Secondary School Kapa Haka Competition in Whakatū, Nelson.

3.3 Participation in and Contribution to Decision Making

3.3.1 Report back on other Activities contributing to Community Board Plan *[for items not included in the above table but are included in Community Board Plan]*

- **Halswell Quarry Community Planting Days**



Two community planting days have recently been held at Halswell Quarry, with the next event being held on Saturday 20 July 2024 in association with Trees for Canterbury.

The planting days are a great way for the community to have fun volunteering with friends and family while doing something good for the environment and community and connect with the valuable local resource of the Quarry Park.

- **Huritini Student Council**

The Huritini Student Council met on Wednesday, June 19th, at Halswell School. In 2024, the HSC has decided to prioritise food safety as their project focus. During this meeting, the students researched existing resources in Halswell, including community gardens, food pantries, food banks, and potential partner organisations. As a result, they have chosen to establish food pantries at each school. Stay tuned for updates on their progress.



- **Gear Up Ōtautahi**

Gear Up Ōtautahi donations bins are back out the in the community. There are 16 locations across the city with four bins in the Halswell-Hornby-Riccarton wards. These include; Halswell Hub, Christchurch Netball Centre, Matatiki: Hornby Centre and Rārākau: Riccarton Centre.

A donation of goggles was recently made to the Wharenuī Sports Centre who will make use of these for their local tamariki that do swimming lessons.

If you have any used or outgrown sports gear in good condition, please think about donating. The gear will be recycled back into the community! For a full list of bin locations, please visit our [Facebook](#) or email gearup@ccc.govt.nz



- **Mental Health First Aid Training**

Representatives from community organisations across the ward came together to participate in a Mental Health First Aid training, delivered by Hato Hone St John. The day-long training was provided to assist those working in the community at the grass roots level to understand and cope with situations they find themselves in, dealing with people impacted by mental health pressures. Participant feedback included;

- "Gives me confidence to deal with someone having or potentially having mental health issues, where in the past I would have run away from the situation."
- "This course changed my way of thinking about mental health – wellness and illness. It has given me some fantastic tools in my kete to continue to support my community and to keep myself safe and well."



- **Matariki Fun Day**

The Greater Hornby Residents' Association hosted a Matariki Fun Day on Saturday 22 June 2024, from 11am to 2pm at South Hornby School.

Everyone was welcome to enjoy this fun-filled day of cultural celebration. It was a great success, with something for everyone. There were a number of school group performances, crafts with the tamariki, market stalls holders, food vendors, bouncy castle and a free sausage sizzle. Attendees brought along non-perishable food which was donated to the local Salvation Army Food Bank. There was also a wonderful team of volunteers that helped out on the day.



- **Community Development Network Trust (CDN Trust) Annual Luncheon**

CDN Trust hosted their annual luncheon where they acknowledge their supporters as well as their volunteers. The Trust has benefitted from over 150 volunteers giving over 11,000 hours – equating to a value of \$316,000.

As a youth organisation, the Trust had 17,951 contacts with young people, representing contact with 1807 different young people and their families over the course of a year.



4. Advice Provided to the Community Board Ngā Kupu Tohutohu ka hoatu ki te Poari Hapori

4.1 Upper Riccarton Safety Improvements - Construction

At its meeting on 15 February 2024, the Community Board approved a package of improvements to make it safer for all transport users travelling around Upper Riccarton. Staff have provided the attached update on how the works will be undertaken (see Attachment B).

The contractor undertaking the works has prepared a programme for completion of the work at night as works during the day would cause severe disruption to the road network.

This work started in mid-June and will take at least eight weeks to complete.

Stage 1 – Upper Riccarton work package is split into four zones:

- Zone 1 - Waimairi Road including the platform on Waimairi Road at the Riccarton Road/Waimairi Road intersection.
- Zone 2 Hansons/Riccarton intersection and Riccarton Road platform east of Waimairi Road.
- Zone 3 Main South Road/Curletts Road intersection
- Zone 4 All minor works including a pedestrian island, side road speed humps etc.

Planning the implementation of the works includes:

- engagement with local businesses to ascertain any that operate overnight, as well as any property access requirements for large vehicle deliveries, planned property works and events.
- Visiting residents close to the works and start works notices. For the wider residential community and schools.
- A strategic approach i to communications and marketing to ensure residents, schools and businesses are aware that the safety improvements are taking place.

Stage 2 – Main South/Yaldhurst/Riccarton intersection works are still to be considered and agreed upon by the Council. A separate package of physical works will be undertaken at a future date.

4.2 Halswell Junction Road- Pedestrian Safety Improvements

Following a Public Forum presentation by a local resident to the Council on 21 June 2023.

The Council requested that staff provide advice on the issues raised and investigated what measures could be taken to address safety concerns, resulting from the speed limits along Halswell Junction Road, and what could be installed to provide for safer crossing for the Knights Stream School children and others to the rugby fields and skatepark.

Staff have now reviewed the safety concerns and provided a memorandum in response (see Attachment C) advising that the following actions are proposed to improve safety:

- Permanent warning signage has been installed on approaches to the pedestrian crossing points to improve awareness of the possible presence of pedestrians, including children.
- Median island vegetation has been lowered to improve intervisibility between pedestrians waiting to cross and approaching road users.

- As part of the approved Interim Speed Management Plan, a variable 30kilometre per hour speed limit is being installed on Halswell Junction Road. This will cover the approaches to both Albert Willis Avenue and Denali Street and the nearby pedestrian crossing points. This is anticipated to be installed by the end of September 2024.

Staff will review the situation should any pedestrian safety concerns remain following the installation of the variable speed limit.

4.3 **Oakhampton Reserve playground renewal**

Description and Objectives:

To renew the Play Space at Oakhampton Reserve as it has reached the end of its life span and is no longer compliant to the playground standards.

Consultation was undertaken via Korero Mai in August 2023. The consultation was based on an early concept plan (refer Attachment F Concept Design May 2023).

22 responses were received, summarised below:

- Mixed feedback with about half in favour of the concept plan
- Request to keep see saw and seat at eastern end of reserve
- Provide nature play
- Other feedback received:

Tidy up bushes and (cabbage) trees

Repair fences

Feedback from the consultation has been incorporated in the final concept plan

- One of the existing seats is in moderate condition and will remain in place, however the other one (located in amongst planting) is in poor condition and will have to be removed
- A ticket has been raised with the Council's contractors to tidy up the cabbage trees. However, due to the current Tree Policy they are unable to be removed.
- CCC Park Rangers have completed some repairs on the fencing
- Community Partnership Rangers will be coordinating a 'community working bee', once the playground construction is completed, to encourage kaitiaki over the park

Concept Design:

The concept design was finalised in May 2024 (refer Attachment G Concept Design May 2024) and has been approved by the Project Sponsor

Next steps:

- Finalise detailed design and tender documents – June/July 2024
- Procurement of play equipment – June/July 2024
- Tender of construction works – August 2024
- Construction works – October/November 2024

4.4 Rosella Reserve playground renewal

Description and Objectives:

To renew the Play Space at Rosella Reserve as it has reached the end of its life span and is no longer compliant to the playground standards.

Consultation was undertaken via Korero Mai in August 2023. The consultation was based on an early concept plan (refer attachment H) that displayed likely equipment options and saw the playground renewed at the opposite end of the reserve towards Ben Navis Drive.

Five responses were received:

- One in favour of concept design, asking for monkey bars to be added
- One did not comment on concept
- More seating/ picnic spaces
- Three oppose the concept design - Blocks view, leave in current location (x 3)

Ask for more play elements: stepping poles, climbing frame

Concept Design: In light of the consultation feedback the play space will be retained in its current position along Rosella Street. The play equipment selection was amended to allow for the inclusion of monkey bars.

The concept design (refer attachment I) has been approved by the Project Sponsor

Next steps:

Finalise detailed design and tender documents – June/July 2024

Procurement of play equipment – June/July 2024

Tender of construction works – August 2024

Construction works – October/November 2024

4.5 Riccarton and Fendalton Christchurch Regeneration Acceleration Facility (CRAF) update

Staff have provided an update on the Riccarton CRAF programme (see Attachment J).

The priority for the Community Board for this package of improvements was to investigate a pedestrian crossing facility outside the Masjid Al Noor Mosque on Deans Avenue. Early engagement has been had with representatives of the Mosque and with Deans Avenue Precinct Society and pedestrian counts undertaken on Deans Avenue. Pedestrian data analysis supports a signalised crossing at this location, using the Pedestrian Network Guide Crossing Selection Process.

Scheme design and costings are nearing completion.

Bradshaw Terrace street renewal construction is scheduled for completion early July 2024. Due to limited availability the street tree species was changed from *Acer platanoides* 'Globosum' to Crape Myrtle *Lagerstroemia indica* 'De Puard'. Both trees are a small deciduous tree well suited to the site location and conditions. All residents were notified of this change.

Brockworth Place Street renewal (Deans Avenue to 23 Brockworth Place) scheme design is complete with scheme cost estimate underway.

Consultation is planned for September/October following a Community Board Information Session. This project will be consulted on alongside the Deans Avenue crossing facility as the community and stakeholders are the same.

The initial three projects of the package of minor cycle, footpath and traffic calming improvements identified are in scheme design and investigations. These are:

- Installation of two mid-block speed humps on Mona Vale near Kilmarnock Street
- Installation of a speed hump on Darvel Street
- Installation of two speed humps either side of the bridge on Harakeke Street, between Rochdale Street and Matai Street West

Lighting assessments are currently underway for each project followed by scheme design construction estimates. Consultation with affected residents planned for September/October following a Community Board Information Session with consultation planned for September/October following a Community Board Information Session.

The project for the installation of a signalised raised pedestrian crossing on Waimairi Road at the Bush Inn Centre was recently approved alongside the Church Corner safety improvements package.

Construction is expected to start in early July 2024 and is being delivered with the Church Corner works. The majority of these works will be nightworks due to the high number of vehicles during the day through this area. Early engagement regarding the construction has been undertaken with affected businesses and residents.

The installation of tactile pavers is complete.

Once the confirmed costs and estimates for the current projects are known the project team will work with the Boards to determine the projects to be delivered with the remaining budget.

4.6 Community Patrols

Community Patrols of New Zealand is dedicated to helping build safer communities in partnership with NZ Police and other organisations. Patrols in the Board area include the Hornby and Riccarton community patrols. Their Monthly Patrol Statistics can be found on the Community Patrols of New Zealand website:

[Hornby Community Patrol Inc statistical information](#)

[Riccarton Community Patrol Inc statistical information](#)

4.7 Graffiti Snapshot

For the Board's information, attached is a Graffiti Snapshot, an update on graffiti as of May 2024 (refer **Attachment D**).

4.8 Customer Service Requests/Hybris Report

For the Board's information, attached is a copy of the April 2024 Hybris Report (refer **Attachment E**).

The report provides an overview of the number of Customer Service Requests that have been received, including the types of requests being received and a breakdown of how they are being reported.

Attachments Ngā Tāpirihanga

No.	Title	Reference	Page
A  	Waipuna Halswell-Hornby-Riccarton Community Board Funding Update - June 2024	24/1089144	57
B  	Internal or External Memos Upper Riccarton Safety Improvements - Construction 30 June 2024 Report	24/899163	61
C  	Internal or External Memos Halswell Junction Road- Pedestrian Safety Improvements 30 April 2024 Report	24/617846	63
D  	Graffiti Snapshot - May 2024	24/1058416	65
E  	Halswell-Hornby-Riccarton Hybris Report - May 2024	24/1058417	67
F  	Oakhampton Reserve Concept Design_May 2023	24/1077937	68
G  	Oakhampton Reseve Concept Design_May 2024	24/1077939	69
H  	Concept Design_May 2023_Rosella Res Playspace	24/1106500	70
I  	Concept Design_June 2024_Rosella Res Playspace	24/1106502	71
J  	Memo - Riccarton and Fendalton Christchurch Regeneration Acceleration Facility (CRAF) - Project updates	24/1051271	72

Signatories Ngā Kaiwaitohu

Authors	Sam Savage - Community Recreation Advisor Faye Collins - Community Board Advisor Noela Letufuga - Support Officer Hannah Martin - Community Support & Events Coordinator Marie Byrne - Community Development Advisor Bailey Peterson - Acting Manager Community Governance, Halswell-Hornby-Riccarton
Approved By	Bailey Peterson - Acting Manager Community Governance, Halswell-Hornby-Riccarton Matthew McLintock - Manager Community Governance Team John Filsell - Head of Community Support and Partnerships

	Waipuna Halswell-Hornby-Riccarton Community Board Funding 2023-24		
2023-24	Discretionary Response Fund	Allocated	Funds Remaining
10/08/2023	2023-24 SCF Allocation	\$124,363	
31/08/2023	2022-23 DRF Carryover and other fund carry over	\$11,667	
	Total DRF Fund	\$136,030	
13/07/2023	Church Corner Toy Library Incorporated for wages and the community mural project.	\$3,333	
13/07/2023	Nepal New Zealand Friendship Society of Canterbury Incorporated for the weekly integrated activities	\$3,000	
10/08/2023	Board Project - Culture Galore 2024	\$15,000	
10/08/2023	Allocation to 2023-24 Swimming Accessibility and Activation Fund	\$5,000	
10/08/2023	Board Project - Community Service & Youth Service Awards and Community Pride Garden Awards	\$7,500	
10/08/2023	Allocation to 2023-24 Youth Development Fund	\$10,000	
10/08/2023	Board Project - Community Leadership Opportunities	\$4,500	
10/08/2023	Board Project - Summer with your Neighbours	\$4,500	
10/08/2023	Board Project - Engaging with the Community	\$4,000	
10/08/2023	Allocation to 2023-24 Off The Ground Fund	\$4,000	
10/08/2023	Board Project - 2024 Anzac Day Expenses	\$1,500	
10/08/2023	Patch 'n Judy towards the Quilts for Charity project.	\$1,500	
10/08/2023	Hei Hei Broomfield Community Development Trust towards the Kitchen Renovations project.	\$6,000	
14/09/2023	Halswell Hall Incorporated towards the installation of heat pumps.	\$6,000	
14/09/2023	Russley Playcentre towards playground equipment and swings.	\$2,500	
14/09/2023	Hornby Presbyterian Community Trust towards the Hornby Youth Voice project excluding prize vouchers and wages.	\$1,000	
12/10/2023	Halswell Community Church towards the Youth Development Worker wages and Family Fun Day event expenses	\$8,000	
12/10/2023	Halswell Toy Library Incorporated towards Librarian wages.	\$3,250	
12/10/2023	Holmes Park Scout Group towards Scout Den maintenance.	\$3,200	
12/10/2023	South West Ministries Trust trading as Living Waters Christian Centre towards the Halswell Twilight Market.	\$2,000	
12/10/2023	St Christopher's Anglican Church – Avonhead towards the Community Christmas Carols.	\$1,650	
9/11/2023	Christchurch City BMX Club Inc towards upgrading its track.	\$5,000	
9/11/2023	Champ Nation Youth Academy Incorporated towards salaries/wages for term one 2024.	\$500	
9/11/2023	Vikings Swim Club Incorporated towards Administration Finance Fees.	\$700	
9/11/2023	TSA Hornby Community Ministries towards the Community Christmas Event.	\$3,000	
14/12/2023	Canterbury Westland Kindergarten Assn (Kidsfirst) – Avonhead towards the Entrance way and sandpit	\$1,025	
14/12/2023	Sockburn Residents Association towards the Connecting Sockburn project.	\$1,000	

12/01/2024	Transfer to 2023-24 SC Fund	\$12,000	
15/02/2024	Allocation to 2023-24 Youth Development Fund	\$1,500	
14/03/2024	Halswell Community Project Inc towards the Halswell Information Booklet.	\$2,500	
11/04/2024	Allocation to 2023-24 Youth Development Fund	\$1,000	
11/04/2024	Hornby Netball Club towards the Gym Hire for the U21 team.	\$1,000	
9/05/2024	Oak Development Trust towards the Community Street Lighting Project.	\$2,117	
9/05/2024	Canterbury Malaysian Society Incorporated towards Older Adults trip and Malaysian Independence Day.	\$1,000	
9/05/2024	Halswell Small Dogs (Owners Group) towards the winter dog walk project.	\$420	
9/05/2024	The Hornby Combined Probus Club Incorporated towards the 40 Year Jubilee Celebration.	\$700	
9/05/2024	St Mark's Retired Peoples Fellowship towards the Monthly Outings Project.	\$1,000	
13/06/2024	Allocation to 2023-24 Youth Development Fund.	\$1,000	
13/06/2024	Citizens Advice Bureau Christchurch Area Incorporated towards the CAB West - Hornby Secure Access project.	\$380	
13/06/2024	Emmanuel Christian School towards necessary team equipment for its combined school netball team.	\$650	
		\$133,925	\$2,105
2023-24	Youth Development Fund	Allocated	Funds Remaining
10/08/2023	Discretionary Response Fund Allocation	\$10,000	
15/02/2024	Discretionary Response Fund Allocation	\$1,500	
11/04/2024	Discretionary Response Fund Allocation	\$1,000	
13/06/2024	Discretionary Response Fund Allocation	\$1,000	
	Total YDF Fund	\$13,500	
27/07/2023	Fletcher Due towards representing New Zealand at the U19 Men's Softball World Series 2023 in Hermosillo, Mexico.	\$500	
27/07/2023	Lynonahdolphin Tausa towards participating at the Teuila World Club Series 2023 in Apia, Samoa.	\$500	
14/08/2023	Sophia Jackways towards attending the She Shines Dance tour in Los Angeles with Burnside High School.	\$500	
14/08/2023	Kaiden Yates towards participating in Futsal at the Australia Deaf Games 2024.	\$500	
25/08/2023	Holly Munro towards the costs associated with attending the Netball NZ Open Championships in Dunedin	\$250	
25/08/2023	Samantha Laing towards the costs associated with attending the Netball NZ Open Championships in Dunedin	\$250	
25/08/2023	Alexander Clark towards the costs associated with attending the Under18 Future Blacksticks Camp in Hamilton	\$300	
25/08/2023	Jackson Stewart towards attending the National Rugby League Youth Tournament in Rotorua.	\$300	
29/08/2023	Jun McDonald towards representing New Zealand in the Gymnastics World Cup touring Hungary.	\$500	

5/09/2023	Avonhead Primary School towards supporting its Intermediate Chess Team members Ritika Maria Joseph and Lucas Han attending the New Zealand Chess Federation Interschool Championships in Auckland.	\$200	
11/09/2023	Ezekiel Faga-Leti towards representing the South Island at the National Rugby League Youth Tournament in Rotorua and the NZRL National Secondary Schools Boys representative team test match against the NZRL Club team in Auckland.	\$450	
11/09/2023	Courtney Smith towards representing New Zealand at the Pan Continental Curling Championships in Kelowna, Canada.	\$500	
20/09/2023	Christchurch Girls' High School on behalf of Lilah Cowan towards representing the School at the New Zealand Secondary School Basketball AA Nationals in Palmerston North.	\$100	
25/09/2023	Florence Paulo towards representing Canterbury Touch Rugby at the All-Nations Touch Tournament in Australia.	\$500	
25/09/2023	Tessa Wilson towards attending the Spirit of Adventure course.	\$300	
25/09/2023	Jorja Steele towards representing New Zealand playing Futsal at the Australia Deaf Games in Newcastle, Australia.	\$500	
28/09/2023	Stephanie McNair towards representing New Zealand as part of the Women's team at the Oceania Shooting Championships in Brisbane, Australia.	\$500	
28/09/2023	Jordon Whittleston towards representing New Zealand as part of the Men's U21 team at the Hockey Junior World Cup in Kuala Lumpur, Malaysia.	\$500	
1/11/2023	Flynn Gunther towards representing New Zealand at the 30th FIG Trampoline World Age Group Championships 2023 in Birmingham, England.	\$500	
7/11/2023	Cooper Paulo to represent Canterbury in the Under 14 Touch Team Oamaru Tournament 2023.	\$250	
8/11/2023	Isabella Brindley towards attending the Outward Bound 21-day teenager course.	\$300	
8/11/2023	Anna Lee School of Dance to support Ella Caldwell towards attending and performing on the She Shines On Dance Tour 2024 in New York and Orlando, USA.	\$200	
23/01/2024	New Brighton Surf Life Saving Club towards Caitlin Knudsen participating in the Trans-Tasman Surf Boat Challenge to be held in Melbourne, Australia	\$350	
29/01/2024	Christchurch Girls High School towards Isla Maclean, Holly Smith, Jessie Smith and Isidora Diaz Aguirre to participate in the National Secondary Schools Volleyball Championships 2024 in Palmerston North.	\$400	
31/01/2024	Heat Check Canterbury Hoop Nation for Maiyah Profit to participate in the National Hoop Nations Basketball Tournament to be held in Whanganui.	\$250	
21/02/2024	Richard Junior Tikolevu towards participating in the Polynesian Basketball Academy USA Tour 2024 in Las Vegas, USA.	\$400	
28/02/2024	Stella Crossan towards participating in the Asia Pacific Canoe Sprint Cup 2024 in Sydney Australia.	\$400	
11/03/2024	St Thomas of Canterbury College towards Alex Walls, Waisea Henry, Josh Dempster, Finn Steel, Finn Matheson, Rico Rzoska, Noah Eastwick, Zural Cosgrove, Matthew Scott and Matthew Surrey to participate in the New Zealand Secondary School Futsal National Championships in Wellington.	\$500	
18/03/2024	Amber Hill towards participating in the Girls Brigade Awesome Leadership Course in Auckland.	\$300	
16/04/2024	Zoe Dunning towards participating in the Australian Oireachtas to be held on the Gold Coast, Australia.	\$500	
16/04/2024	Ben McLauchlan towards participating in the Federation of International Touch World Cup 2024 to be held in Nottingham, England.	\$500	
30/04/2024	Badminton Canterbury Incorporated towards Eben Anil, Keisha Wong, Kelly Shen, Zooni Butterfly Ahuja, Janie Wang, Kate Duffield and Pat Weng to	\$500	

	participate in the New Zealand Junior Team Badminton Championships 2024 to be held in Palmerston North.		
13/06/2024	Jonathon Fry towards participating in the IMG Academy Junior World Golfing Championships, World Stars of Junior Golf Championships and Callaway Future Championships to be held in the USA	\$500	
13/06/2024	Noah Crossan towards participating in the National Secondary School Kapa Haka Competition in Whakatū, Nelson.	\$200	
21/06/2024	Benjamin Habinshuti towards participating in the under-16 National Basketball Tournament 2024 in Auckland.	\$200	
		\$13,400	\$100
2023-24	Off the Ground Fund	Allocated	Funds Remaining
10/08/2023	Discretionary Response Fund Allocation	\$4,000	
	Total OTG Fund	\$4,000	
5/10/2023	Mitchell Reid towards a Mural in Sockburn.	\$400	
15/11/2023	Geoffrey Siave towards the Carols, Chaos, and Kai Community event <i>(full grant amount not required)</i>	\$241	
22/11/2023	Lorraine Rycroft towards the Kennedys Bush Road Neighbourhood Christmas Party.	\$400	
12/04/2024	Mesoumah Sadat towards an Eid Celebration.	\$400	
15/05/2024	Peter Simmonds towards the We Heart Harrington Park – Mulching and BBQ Social Event	\$300	
10/06/2024	Hornby Community Care Centre Trust towards its Expanded Centre Engagement Project.	\$400	
		\$2,141	\$1,859
2023-24	Swimming Accessibility and Activation Fund	Allocated	Funds Remaining
10/08/2023	Discretionary Response Fund Allocation	\$5,000	
	Total SAA Fund	\$5,000	
10/11/2023	Youth and Cultural Development Society Incorporated towards YCD – FRESH Pop Up Activations @ CCC Summer Splash Event.	\$1,000	
19/06/2024	Nepal New Zealand Friendship Society of Canterbury Incorporated towards Empower Her: Weekly Swimming Sessions for Women.	\$1,000	
		\$2,000	\$3,000

Memos



Memo

Date: 3 June 2024
From: Gemma Dioni, Principal Advisor Transportation - Safety
To: Waipuna Halswell-Hornby-Riccarton Community Board
Cc:
Reference: 24/899163

Upper Riccarton Safety Improvements - Construction

1. Purpose of this Memo Te take o tēnei Pānui

- 1.1 To provide the Waipuna Halswell-Hornby-Riccarton Community Board with information around construction impacts while delivering safety improvements at intersections and crossings around Church Corner in Upper Riccarton. The contractor and Council staff are undertaking early stakeholder engagement directly with affected business owners, and residents around the intersections. In parallel, staff would like to seek any feedback as soon as possible from Community Board members.
- 1.2 The information in this memo is not confidential and can be made public.

2. Update He Pānui

- 2.1 At its meeting on 15 February 2024, the Community Board approved a package of improvements to make it safer for all transport users travelling around Upper Riccarton including:
 - Installing safe speed platforms on the approaches to the Riccarton Road / Hansons Lane / Waimairi intersection.
 - Removing the slip lane from Riccarton Road onto Waimairi Road.
 - Adding a new signalised crossing on Waimairi Road, outside the Bush Inn Centre.
 - Adding cycle lanes on Waimairi Road and making changes to the bus stop and parking markings.
 - Installing speed humps on Angela Street and Brake Street at their intersection with Yaldhurst Road, Leslie Street at its intersection with Waimairi Road and Bowen Street at its intersection with Peer Street.
 - Installing a pedestrian refuge island on Yaldhurst Rd, close to the intersection with Brake Street.
 - Removing the left turn slip lane from Main South Road into Curletts Road and providing a left turn lane at the signals.
- 2.2 Fulton Hogan, the contractor completing the safety improvements in this location, have provided a programme to complete the work at nights to minimise disruption. Day works will not be possible, as this approach would cause severe disruption to the road network.
- 2.3 This work will start in mid-June and will take at least eight weeks to complete.
- 2.4 The overall project is split into two stages:
 - 2.4.1 Stage 1 – Upper Riccarton package. Split into four zones.

Memos

Zone	Work to be completed in zone
Zone 1	Waimairi Road including the platform on Waimairi Road at the Riccarton Road/Waimairi Road intersection.
Zone 2	Hansons/Riccarton intersection and Riccarton Road platform east of Waimairi Road.
Zone 3	Main South Road/Curletts Road intersection
Zone 4	All minor works including a pedestrian island, side road speed humps etc.

2.4.2 Stage 2 – Main South/Yaldhurst/Riccarton intersection

- 2.5 We are currently only focussing on the construction of Stage 1. Stage 2 is still to be discussed and agreed upon at Council. A separate package of physical works will be undertaken at a future date.
- 2.6 We will send emails to businesses this week to start gathering information to assist with planning the implementation of the works. This includes identifying which businesses operate overnight, as well as any property access requirements for large vehicle deliveries, planned property works and events.
- 2.7 Residents close to the works will receive a visit from the contractor. The wider residential community and schools will also still receive the start works notices.
- 2.8 We are taking a strategic approach to communications and marketing to ensure residents, schools and businesses are aware that the safety improvements are taking place.

3. Conclusion Whakakapinga

- 3.1 Fulton Hogan have provided a methodology for delivering the safety improvements in Upper Riccarton through nightworks. Subject to feedback received from those directly affected around the intersections and improvements, we can plan as best we can to minimise disruption for businesses and residents.

Attachments Ngā Tāpirihanga

There are no attachments to this memo.

Signatories Ngā Kaiwaitohu

Author	Gemma Dioni - Principal Advisor Transportation Safety
Approved By	Katie Smith - Team Leader Traffic Operations Stephen Wright - Manager Operations (Transport)

Memos



Memo

Date: 7 June 2024
From: Andrew Hensley, Traffic Engineer
To: Mayor and Councillors, Waipuna Halswell-Hornby Riccarton Community Board
Cc: Manager Community Governance Halswell-Hornby-Riccarton
Reference: 24/617846

Halswell Junction Road- Pedestrian Safety Improvements

1. Purpose of this Memo Te take o tēnei Pānui

- 1.1 To update elected members on the progress of pedestrian safety improvements on Halswell Junction Road, following a Public Forum presentation by a local resident, Mr Kevin Roche, to the Council on 21 June 2023.
- 1.2 At the meeting, it was requested that staff provide advice on the issues raised during the public forum. These issues included investigating what measures could be taken to address safety concerns, resulting from the speed limits along Halswell Junction Road, and what could be installed to provide for safer crossing for the Knights Stream School children and others to the rugby fields and skatepark.
- 1.3 The information in this memo is not confidential and can be made public.

2. Update He Pānui

- 2.1 Staff reviewed the safety concerns and undertook site visits to investigate what measures would be warranted to improve safety.
- 2.2 As a result of the investigations the following actions have been taken to improve safety:
 - Permanent warning signage has been installed on approaches to the pedestrian crossing points to improve awareness of the possible presence of pedestrians, including children.
 - Median island vegetation has been lowered to improve intervisibility between pedestrians waiting to cross and approaching road users.
 - As part of the approved Interim Speed Management Plan, a variable 30km/h speed limit is being installed on Halswell Junction Road. This will cover the approaches to both Albert Willis Avenue and Denali Street and the nearby pedestrian crossing points. This is anticipated to be installed by the end of September 2024.

3. Conclusion Whakakapinga

- 3.1 Actions have been taken to improve pedestrian safety, and further improvements will be made as part of the Interim Speed Management Plan.
- 3.2 Staff will review the situation should any pedestrian safety concerns remain following the installation of the variable speed limit.

Memos



Attachments Ngā Tāpirihanga

There are no attachments to this memo.

Signatories Ngā Kaiwaitohu

Author	Andrew Hensley - Traffic Engineer
Approved By	Katie Smith - Team Leader Traffic Operations Stephen Wright - Manager Operations (Transport) Lynette Ellis - Head of Transport & Waste Management

GRAFFITI SNAPSHOT

May 2024

Ward & Suburb Insights



Ward Reporting

This is an indication (compared to the previous month) of how active our citizens are. Several people may report the same “tag” so this is not the best way to determine the amount of graffiti present.

Ward	# of Tickets - Latest Month	# of Tickets - Previous Month	% Monthly Change
Central	1,106	906	22%
Heathcote	322	170	89%
Coastal	138	183	-25%
Linwood	137	128	7%
Spreydon	117	161	-27%
Innes	98	70	40%
Burwood	77	60	28%
Cashmere	72	125	-42%
Banks Peninsula	71	27	163%
Riccarton	64	110	-42%
Papanui	58	38	53%
Fendalton	40	40	0%
Harewood	39	40	-3%
Hornby	18	62	-71%
Waimairi	13	8	63%
Halswell	11	28	-61%
Total	2,381	2,156	10%

Ward Removal

This is an indication (compared to the previous month) of how much graffiti has been removed. This gives a better indication of the amount of graffiti present.

Ward	Cleaned Graffiti latest month - mtrs2	Cleaned Graffiti previous month - mtrs2
Banks Peninsula	117	106
Burwood	48	81
Cashmere	58	153
Central	995	802
Coastal	279	456
Fendalton	29	41
Halswell	28	69
Harewood	102	312
Heathcote	555	822
Hornby	17	60
Innes	116	114
Linwood	199	316
Papanui	60	58
Riccarton	103	106
Spreydon	173	235
Waimairi	10	36
Total	2886	3,766

Reporting Hot Spots

Streets/Locations with the most reported graffiti

Street	# of Tickets - Latest Month	# of Tickets - Previous Month
Colombo Street	44	17
St Asaph Street	31	7
Avon Riverbank Central City	25	20
Manchester Street	24	12
Fitzgerald Avenue	17	3
Oxford Terrace	17	6
Tuam Street	17	3
Thomson Park	15	9
Waltham Park	14	2
Cathedral Square	13	14
Cashel Street	11	9
Avon Corridor 1 RRZ Land	10	3
Cashel Street, Plymouth to Colombo	10	4
Innes Road, Philpotts to Mahars	10	2
Victoria Square	10	23
Washington Way Reserve	10	8
Ferry Road	9	7
Gloucester Street	9	10
Sydenham Park	9	2
Avon River, Manchester St to Avon River	8	6
Cathedral Square, Worcester to Colombo	8	8
Colombo Street \ Cashel Street, Central City	8	1
Colombo Street, Elgin to Wordsworth	8	
Manchester Street, Hereford to Worcester	8	5
Oxford Terrace, Montreal to Cambridge	8	5
Rauora Park	8	17

Removal Hot Spots

Locations with the most graffiti removed (m2)

Street	Cleaned Graffiti Square Metres
Washington Way Reserve	116
Worcester Street, Oxford to Cathedral	98
Riccarton Road \ Mona Vale Avenue, Riccarton	85
Thomson Park	74
Tuam Street	72
Carlyle Street, Colombo to Buchan	65
Colombo Street	62
Gloucester Street \ Fitzgerald Avenue, Central City	59
Tully Lane	55
Fitzgerald Avenue	54
15 Vulcan Place, Middleton, Christchurch 8024, New Zealand	48
Innes Road, Philpotts to Mahars	48
Marylands Reserve	44
Walter Park	43
Sydenham Park	42
High Street, Cashel to Colombo	37
St Asaph Street	35
South New Brighton Park	35
Hereford Street, Tattersalls to Manchester	30
Cathedral Square, Worcester to Colombo	26
Clarkson Avenue, Lichfield to Cashel	26
Wordsworth Street, Colombo to Buchan	25
Fitzgerald Avenue \ Gloucester Street, Central City	25
Middleton Park	24
Mandeville Reserve	24

GRAFFITI SNAPSHOT

May 2024

Further Insights

Reporting Activity

Reporter Type	April	May
Individual Volunteer	945	902
Friend Volunteer	497	692
Non Volunteer	571	608
Group Volunteer	127	164
Total	2,140	2,366

% of Reports made by Volunteers

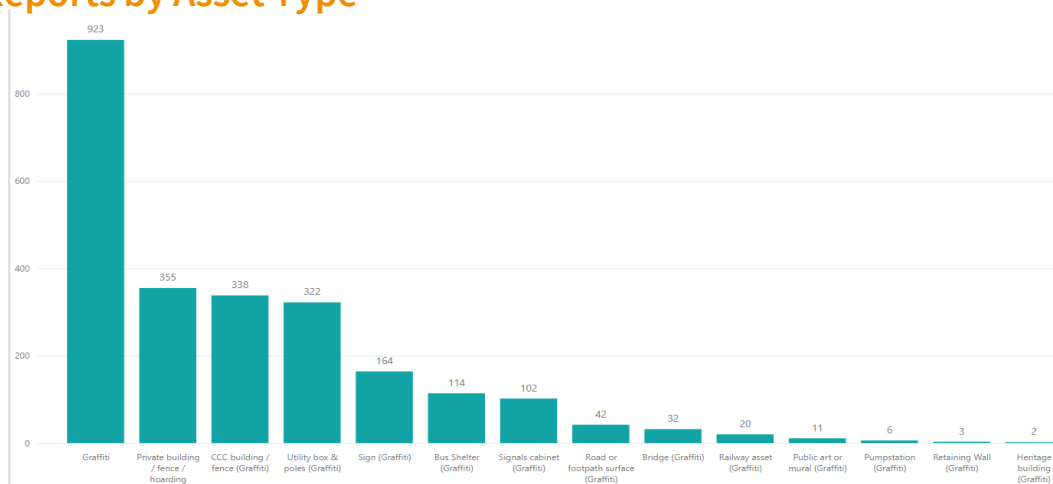


Top 5 Volunteer Reporters

Graeme (336)
Peter
Denise
Marie-Therese
Jo

Monthly Draw Winner: Michael

Reports by Asset Type



Latest Murals



Location: 22 Centaurus Road
Artist: Rose



Location: Climate Action Campus
Artist: Nick Lowry



Location: 59 Centaurus Road
Artist: Trystan Cutts

Ticket Report

01 05 2024 - 31 05 2024

Filter by Ward

Halswell-Hornby-Riccarton

Filter by month

2024 (Year) + May (Month)

2492

Reported Tickets last month

90.89%

Resolved within SLA

Status as of Report Date

Closed/Resolved

68.14%

Open

29.17%

Programmed Work

2.69%

Channels

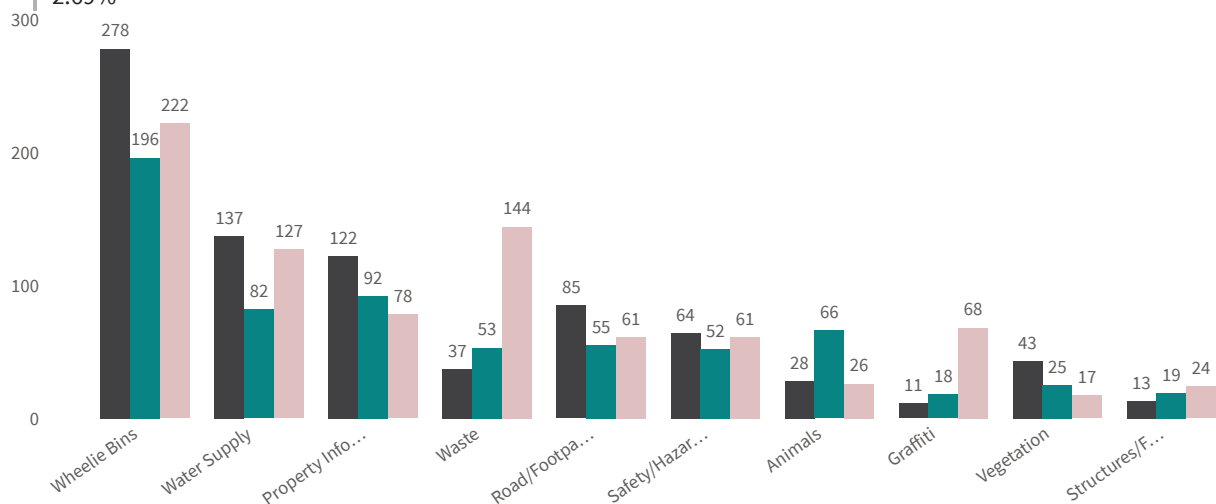
Snap, Send, Solve
557 (22%)

Phone/Email/Walk...
1171 (47%)

Website 764 (31%)

Top 10 Incident Categories

● Halswell ● Hornby ● Riccarton

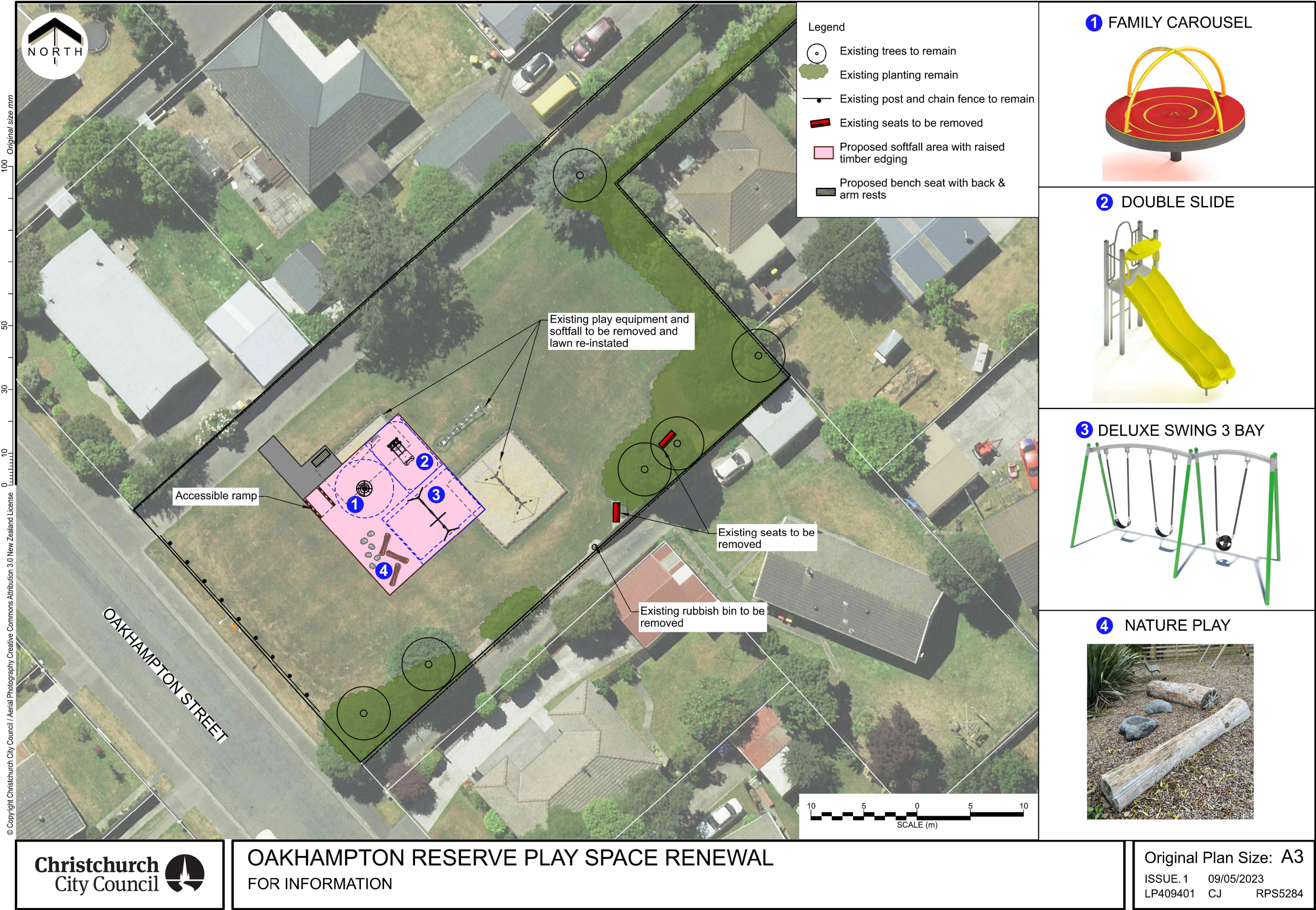


Top 10 Object Categories

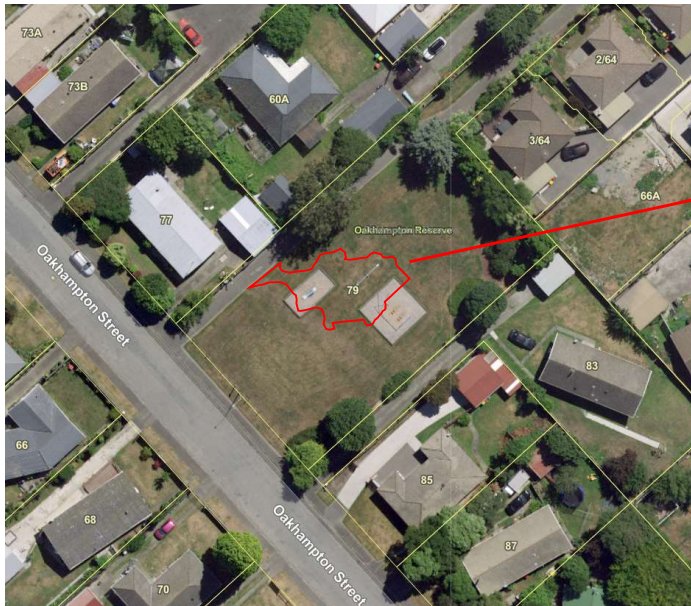
# Tickets	ObjectCategory	+/- Previous Month
243	Bin Not Collected	73
243	Damaged Bin	46
194	Litter	-33
145	Water Leak	-16
109	Residential LIM	-23
88	Missing Bin	40
81	Residential Property Files	-18
76	New Residential Water Connection	34
63	New Service	7
56	Water Supply	0

Report date:

04 Jun 2024



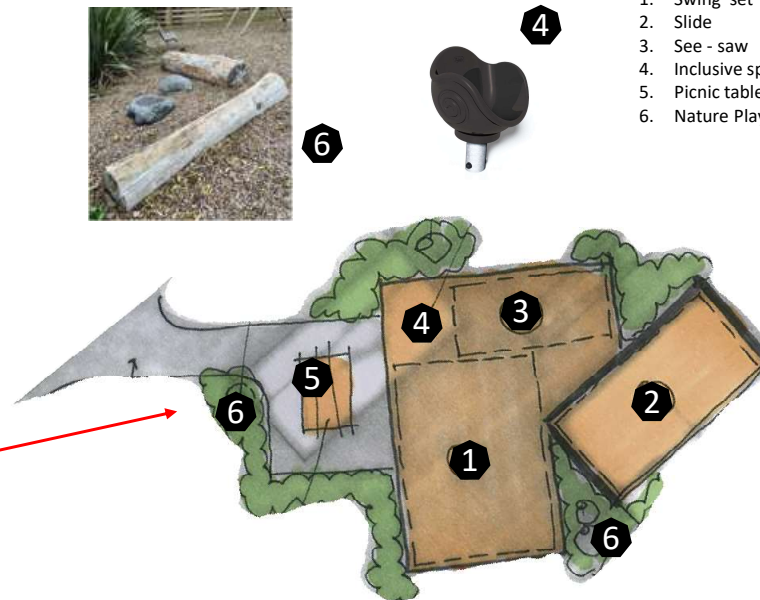
Oakhampton Reserve Playground Renewal



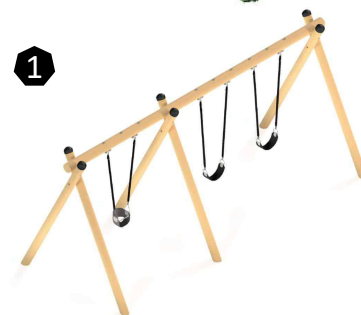
6

4

1. Swing set
2. Slide
3. See - saw
4. Inclusive spinner bucket
5. Picnic table
6. Nature Play



1



5



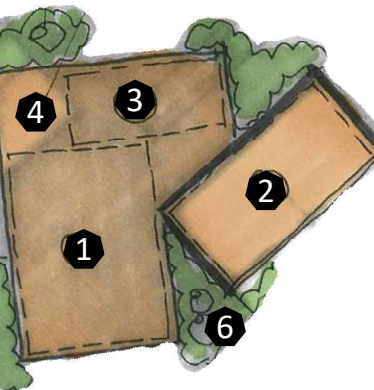
3



2



6

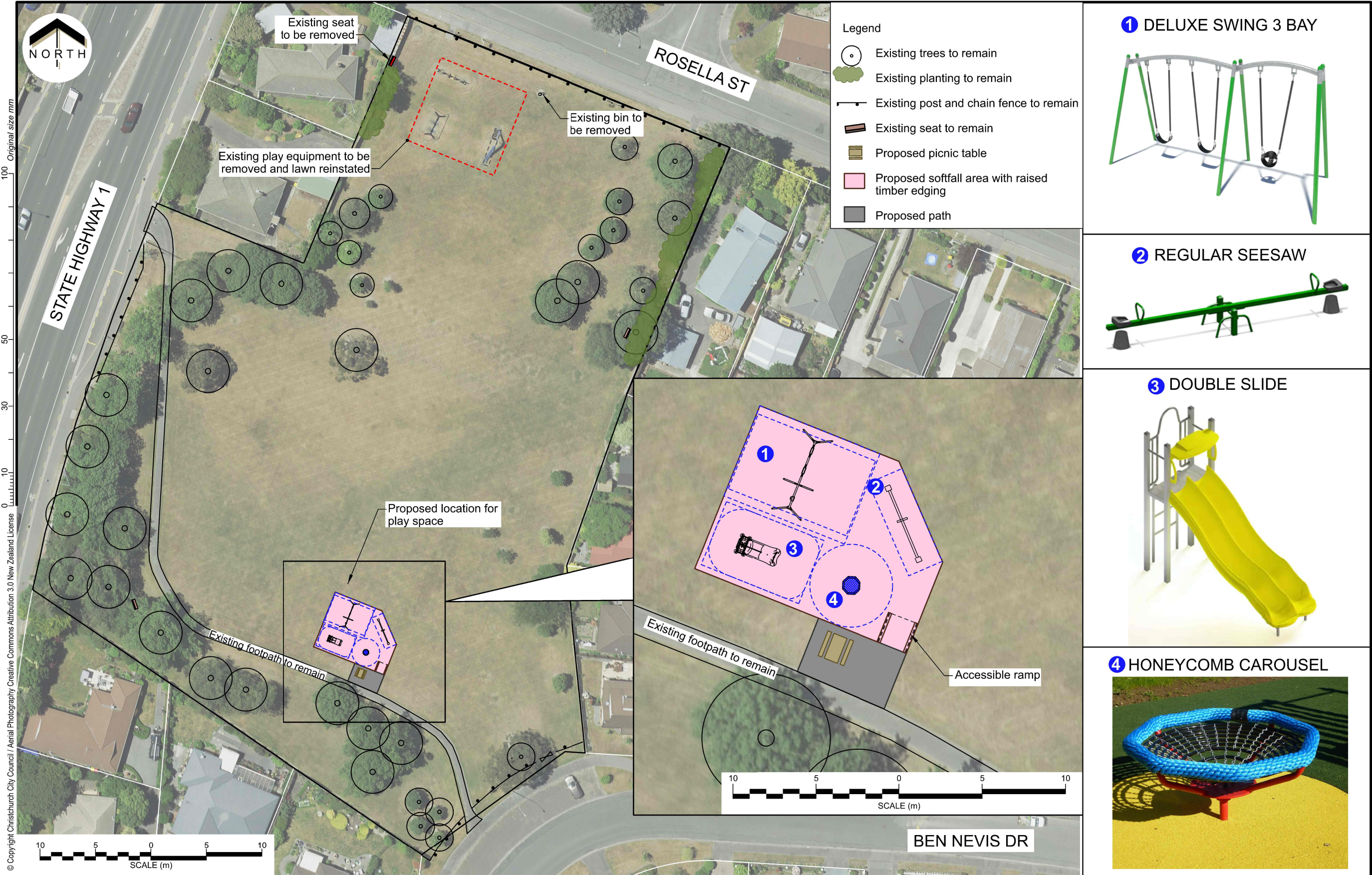


4

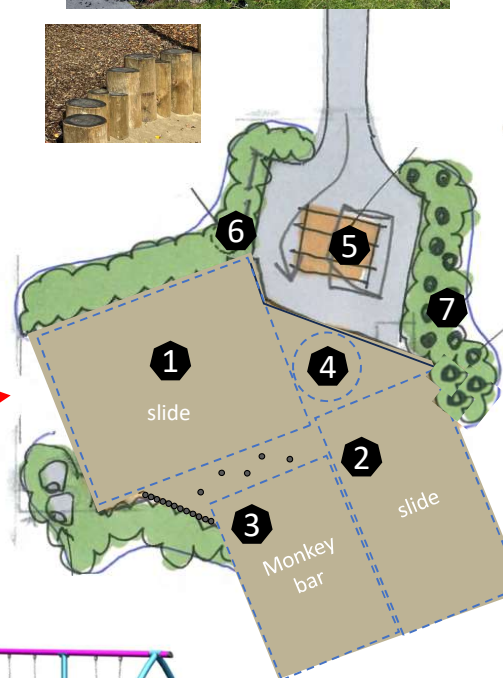
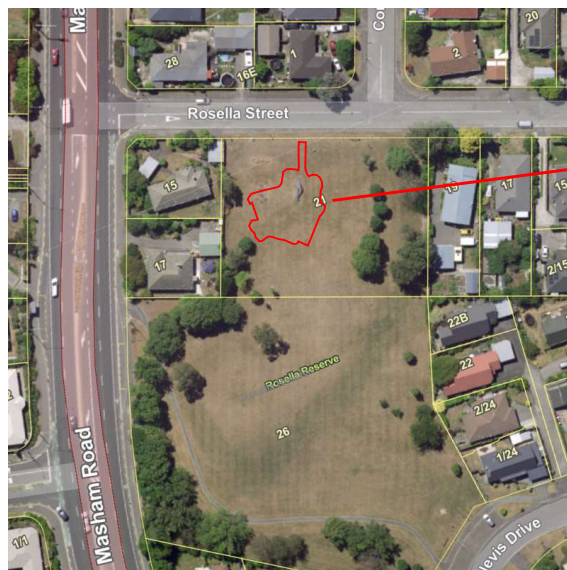
3

5

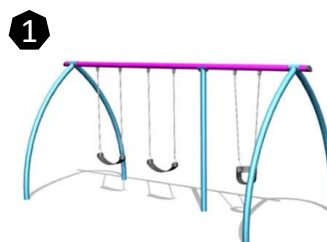
6



Concept plan - Rosella Reserve Playground Renewal



1. Swing set
2. Slide
3. Monkey bars
4. Springer
5. Picnic table
6. Sensory play panel
7. Nature play / playful edging



Memos



Memo

Date: 20 June 2024
From: Ann Tomlinson, Project Manager
To: Waipuna Halswell-Hornby-Riccarton Community Board
Waimāero Fendalton-Waimairi-Harewood Community Board
Cc: Jess Garrett, Community Governance Manager
Maryanne Lomax, Community Governance Manager
Faye Collins, Community Board Advisor
Aidan Kimberley, Community Board Advisor
Reference: 24/1051271

Riccarton and Fendalton Christchurch Regeneration Acceleration Facility (CRAF) - project updates

1. Purpose of this Memo Te take o tēnei Pānui

- 1.1 The purpose of this memo is to provide an update to the Waipuna Halswell-Hornby-Riccarton and Waimāero Fendalton-Waimairi-Harewood Community Boards on the Riccarton CRAF programme.
- 1.2 The information in this memo is not confidential and can be made public.

2. Update He Pānui

- 2.1 The Christchurch Regeneration Acceleration Facility (CRAF) is a funding package of \$40 million from the Treasury for transport projects in Christchurch. The purpose of the funding is to make a difference to affected communities by improving liveability and to support their ongoing regeneration.
- 2.2 The CRAF investment in roading and transport improvements will address condition, safety and access issues.
- 2.3 The CRAF funding includes \$30 million for targeted roading and transport improvements to deliver integrated safety, modal choice and asset improvements to communities which experienced significant damage and disruption, or increased transport demand/travel use due to a change in travel patterns following the earthquakes in five areas – Riccarton and Fendalton, Linwood/Woolston, Richmond, New Brighton and Spreydon/Somerfield/Waltham/Beckenham.
- 2.4 **Package of 17 pedestrian improvements**
 - 2.4.1 The priority for the Community Board for this package of improvements was to investigate a pedestrian crossing facility outside the Masjid Al Noor Mosque on Deans Avenue.
 - 2.4.2 Early engagement has been had with representatives of the Mosque and with Deans Avenue Precinct Society.

Memos



- 2.4.3 Pedestrian counts on Deans Avenue, which included 10 cameras between Riccarton Road and Mayfair Avenue, are complete. Pedestrian data analysis supports a signalised crossing at this location, using the Pedestrian Network Guide Crossing Selection Process.
- 2.4.4 Scheme design and costings are nearing completion with consultation planned for September/October following a Community Board Information Session. This project will be consulted on alongside Brockworth Place, street renewal as the community and stakeholders are the same.
- 2.5 **Bradshaw Terrace street renewal**
 - 2.5.1 Construction is on track for completion early July 2024.
 - 2.5.2 Due to limited availability the street tree species was changed from *Acer platanoides* 'Globosum' to *Crape Myrtle Lagerstroemia indica* 'De Puard'. Both trees are a small deciduous tree well suited to the site location and conditions. All residents were notified of this change by letter drop on 12 June 2024 (copy also send to the Community Board prior to distribution).



Memos



2.6 **Brockworth Place street renewal (Deans Avenue to #23 Brockworth Place)**

- 2.6.1 Scheme design is complete with scheme cost estimate underway.
- 2.6.2 Consultation is planned for September/October following a Community Board Information Session. This project will be consulted on alongside the Deans Avenue crossing facility as the community and stakeholders are the same.

2.7 **Package of minor cycle, footpath and traffic calming improvements**

- 2.7.1 The initial three projects in scheme design and investigations:
 - Installation of two mid-block speed humps on Mona Vale near Kilmarnock Street
 - Installation of a speed hump on Darvel Street
 - Installation of two speed humps either side of the bridge on Harakeke Street, between Rochdale Street and Matai Street West
- 2.7.2 Lighting assessments are currently underway for each project followed by scheme design construction estimates.
- 2.7.3 Consultation with affected residents planned for September/October following a Community Board Information Session.

2.8 **Waimairi Road pedestrian improvements**

- 2.8.1 This project is for the installation of a signalised raised pedestrian crossing on Waimairi Road at the Bush Inn Centre. This was recently approved alongside the Church Corner safety improvements package.
- 2.8.2 Construction is expected to start in early July 2024 and is being delivered with the Church Corner works.
- 2.8.3 The majority of these works will be nightworks due to the high number of vehicles during the day through this area. Early engagement has been undertaken with affected businesses and residents regarding the construction.

2.9 **Package of tactile pavers**

- 2.9.1 This package of works is complete.

3. Conclusion Whakakapinga

- 3.1 There is approximately \$1.9 million remaining in the Riccarton and Fendalton CRAF programme. Once the confirmed costs and estimates for the current projects are known the project team will work with the Waipuna Halswell-Hornby-Riccarton and Waimāero

Memos



Fendalton-Waimairi-Harewood Community Boards to determine the projects to be delivered with the remaining budget and to ensure some of this funding is allocated to projects identified in the Fendalton ward.

- 3.2 The next CRAF in-person update to the Community Boards will be in September or October 2024.

Attachments Ngā Tāpirihanga

There are no attachments to this memo.

Signatories Ngā Kaiwaitohu

Authors	Ann Tomlinson - Project Manager Kelly Griffiths - Senior Project Manager
Approved By	Oscar Larson - Team Leader Project Management Jacob Bradbury - Manager Planning & Delivery Transport

13. Elected Members’ Information Exchange Te Whakawhiti Whakaaro
o Te Kāhui Amorangi

This item provides an opportunity for Board Members to update each other on recent events and/or issues of relevance and interest to the Board.

Karakia Whakamutunga

Unuhia, unuhia Unuhia ki te uru tapu nui Kia wātea, kia māmā, te ngākau, Te tinana te wairua i te ara takatā Koia rā e Rongo, whakairia ake ki runga Kia tina! TINA! Hui e! TĀIKI E!	<i>Draw on, draw on, Draw on the supreme sacredness To clear, to free the heart, the body and the spirit of mankind Rongo, suspended high above us (i.e. in 'heaven') Draw together! Affirm!</i>
---	--

14. Resolution to Exclude the Public

Section 48, Local Government Official Information and Meetings Act 1987.

I move that the public be excluded from the following parts of the proceedings of this meeting, namely items listed overleaf.

Reason for passing this resolution: good reason to withhold exists under section 7.

Specific grounds under section 48(1) for the passing of this resolution: Section 48(1)(a)

Note

Section 48(4) of the Local Government Official Information and Meetings Act 1987 provides as follows:

“(4) Every resolution to exclude the public shall be put at a time when the meeting is open to the public, and the text of that resolution (or copies thereof):

- (a) Shall be available to any member of the public who is present; and
- (b) Shall form part of the minutes of the local authority.”

This resolution is made in reliance on Section 48(1)(a) of the Local Government Official Information and Meetings Act 1987 and the particular interest or interests protected by Section 6 or Section 7 of that Act which would be prejudiced by the holding of the whole or relevant part of the proceedings of the meeting in public are as follows:

ITEM NO.	GENERAL SUBJECT OF EACH MATTER TO BE CONSIDERED	SECTION	SUBCLAUSE AND REASON UNDER THE ACT	PLAIN ENGLISH REASON	WHEN REPORTS CAN BE REVIEWED FOR POTENTIAL RELEASE
15.	PUBLIC EXCLUDED WAIPUNA HALSWELL-HORNBY-RICCARTON COMMUNITY BOARD MINUTES - 13 JUNE 2024			REFER TO THE PREVIOUS PUBLIC EXCLUDED REASON IN THE AGENDAS FOR THESE MEETINGS.	