

Christchurch City Council MINUTES ATTACHMENTS

Date: Wednesday 3 July 2024
Time: 9.30 am
Venue: Council Chambers, Civic Offices,
53 Hereford Street, Christchurch

TABLE OF CONTENTS NGĀ IHIRANGI	PAGE
3.1.1. Public Forum - Youth and Cultural Development	
A. Youth and Cultural Development - Presentation to Council.....	3
3.1.2. Public Forum - Robina Dobbie	
A. Robina Dobbie - Presentation to Council.....	27
10. Monthly Report from the Community Boards - June 2024	
A. Waihoru Spreydon-Cashmere-Heathcote Community Board - Presentation to Council	53
B. Waipuna Halswell-Hornby-Riccarton Community Board - Presentation to Council.....	59
C. Waitai Coastal-Burwood-Linwood Community Board - Presentation to Council	65
D. Te Pātaka o Rākaihautū Banks Peninsula Community Board - Presentation to Council	71
E. Waimāero Fendalton-Waimairi-Harewood Community Board - Presentation to Council	76
F. Waipapa Papanui-Innes-Central Community Board - Presentation to Council.....	84
17. Community (Social) Housing Update Report	
A. Community (Social) Housing - Presentation to Council	93





YOUTH & CULTURAL DEVELOPMENT



**"KI TO MANAAKITIA NGA
RANGATAHI KIA TU
PAKARI AI"**

**"TO SUPPORT YOUNG
PEOPLE TO ACHIEVE A
SENSE OF WHOLENESS."**

KAUPAPA O YCD

"TE KAUPAPA O YCD KO TE ARAHITIA O
NGA RANGATAHI I ROTO TO
HUARAHITIA O NGA MANA, NGA IHI,
NGA WEHI KIA TAE ATU KI TAUA
TAUMATA."

YCD MISSION STATEMENT

YCD AIMS TO NAVIGATE YOUNG
PEOPLE THROUGH THE JOURNEY OF
SELF DISCOVERY TO DEVELOP THEIR
STRENGTHS AND REACH THEIR
POTENTIAL.



MOEMOE

KI TO MANAAKITIA NGA
RANGATAHI KIA TU
PAKARI AI.

VISION

TO SUPPORT YOUNG
PEOPLE TO ACHIEVE A
SENSE OF WHOLENESS.



YCD walks alongside Young People to enable them to live whole lives

We do this by being:

- Whai kawenga - Accountable
- Whakamana - Empowering
- Pai - Positive
- Whakaurutanga - Inclusive
- Aroha - Love





MSD



YCD SERVICES

- MENTORING
- SUPPORTED BAIL
- SUPERVISION WITH ACTIVITY
- COMMUNITY SERVICE
- STREET YOUTH WORK PROJECT
- FRESH YOUTH EVENTS
- FRESH OUTREACH PROJECT
- WHAKATU-TIA NGA WERO (SYSC)
- TRANSITION TO INDEPENDANCE
- FAST TRACK
- CASE MANAGEMENT







YCD & CCC PRESENTS

CELEBRATING MATARIKI

HE PUNA TAIMOANA
NEW BRIGHTON, HOT POOLS

FREE ENTRY
FREE KAI & INU

TUESDAY 25TH JUNE
8PM-9:45PM
REGISTRATIONS NEEDED FOR ENTRY
VIA HUMANITIX

FRESH

POOL PARTY

FRIDAY 21ST JUNE, 7PM-9PM
TE POU TOE TOE POOLS

FREE ENTRY

FREE KAI & DRINKS
SPOT PRIZES
FADES & BRAIDS
LIVE DJ ONSITE

YCD Christchurch City Council sport canterbury

YOUTH CULTURAL DEVELOPMENT AND
CHRISTCHURCH CITY COUNCIL PRESENTS

HOUSE of HOOPZ

SHIRLEY: FRIDAY 26TH JANUARY - MACFARLANE PARK
HOON HAY: SUNDAY 4TH FEBRUARY - HOON HAY PARK
LINWOOD: SUNDAY 11TH FEBRUARY - LINWOOD PARK
SELWYN: SATURDAY 17TH FEBRUARY - ROLLESTON COMMUNITY CENTRE
BELFAST: SUNDAY 25TH FEBRUARY - SHELDON PARK
ARANUI: SUNDAY 3RD MARCH - WAINONI PARK
HORNBY: SUNDAY 10TH MARCH - WYCOLA PARK
WOOLSTON/PHILLIPSTOWN: SUNDAY 24TH MARCH - TE WAKA UNUIA

Prizes to be won in each area. The winners from each area will advance to the final.

FINALS: SATURDAY 30TH MARCH - NEW BRIGHTON

YCD Christchurch City Council sport canterbury

YCD PRESENTS

FRESH

MATARIKI CELEBRATION

HOT POOLS SESSION

FREE KAI & DRINKS | WAIATA MAORI **DJ Danny ill**

WEDNESDAY 12TH JULY
HE PUNA TAIMOANA
(NEW BRIGHTON)
8PM-9:45PM
REGISTER FOR FREE ENTRY
(PM YCD FB PAGE)

Christchurch City Council ChristchurchNZ YCD Dox Designs

KAWAI RANGATAHI YOUTH & CULTURAL DEVELOPMENT

PRESENTS AN
OUTDOOR MOVIE SCREENING

STARRING: DWAYNE JOHNSON KEVIN HART JACK BLACK KAREN CILLAN

JUMANJI

WELCOME TO THE JUNGLE

FREE FAMILY EVENT

FRIDAY 15TH SEPTEMBER
LINWOOD PARK BASKETBALL COURTS

6:30PM - 9:00PM

BRING A SEAT & BLANKET
*PLEASE NOTE JUMANJI WELCOME TO THE JUNGLE IS RATED PG

FREE FOOD & DRINKS

HOSTED BY KAWAI RANGATAHI AND YOUTH AND CULTURAL DEVELOPMENT

POWERED BY FRESH

Christchurch City Council ChristchurchNZ KAWAI RANGATAHI YCD FRESH

KAWAI RANGATAHI AND YCD PRESENTS

COOL RUNNINGS

MOVIE NIGHT

FREE FAMILY EVENT
SATURDAY 6TH APRIL
LINWOOD PARK BASKETBALL COURTS

FROM 6PM

BRING A SEAT & BLANKET
*PLEASE NOTE COOL RUNNINGS IS RATED PG

FREE FOOD & DRINKS

HOSTED BY KAWAI RANGATAHI AND YOUTH AND CULTURAL DEVELOPMENT

POWERED BY FRESH

Christchurch City Council ChristchurchNZ KAWAI RANGATAHI YCD FRESH

EASTER WHĀNAU FUN DAY

SATURDAY
23 MARCH
10AM-2PM

@ HE WAKA TAPU, 161 PAGES ROAD

HOSTED BY BIG SIMA
EASTER EGG HUNT

FACE PAINTING
LIBRARY TRUCK

FREE FOOD
FREE HAIRCUTS

BOUNCY CASTLE
FREE FILL A BAG CLOTHING

YCD Christchurch City Council HE WAKA TAPU Ara

BELFAST FRESH IN THE PARK

SUNDAY
25TH FEBRUARY
11AM-3PM

FREE EVENT

POOL PARTY | FREE FOOD & DRINKS
FREE HAIRCUTS & BRAIDS | LIVE DJ & MC
CRAZY BIKES | STONE CARVING | GIANT BUBBLES

ALSO FEATURING 3x3 STREETBALL PLUS MUCH MORE... ALL FREE FOR A FAMILY FUN DAY OUT

SHELDON PARK - BELFAST

KEEP POSTED VIA THE BELFAST COMMUNITY NETWORK FACEBOOK PAGE FOR UPDATES. ALSO CHECK OUT YOUTH CULTURAL DEVELOPMENT ON FACEBOOK FOR DETAILS ON THE HOUSE OF HOOPS STREETBALL LEAGUE.

PROUDLY SPONSORED BY: Christchurch City Council KIWY GAMING FOUNDATION

Waka Tapu Youth & Cultural Development Ara

SUMMER Splash

YOUTH CULTURAL DEVELOPMENT

POOL PARTY & MANU COMP

Sunday 10th December
12pm-5pm - General Admission

Te Hāpua Aquatic Centre

Hosted by **flava DJS THE CLUBKINGZ**

Free Sausage Sizzle & Drinks, Free Haircuts & Braids, Prizes...PLUS Inflatable Obstacle Course, Farmyard Bouncy Castle, Bunny Slide Scavenger Hunt and more...

Manu Comp winners will get free entry to the Z Manu World Championships Otago/Christchurch heat at Jellie Park in February!
Find out more: <https://manuworldchamps.com/events/christchurch>

YCD Christchurch City Council

YCD PRESENTS THE 3RD ANNUAL

III CHRIST CHURCH HIP HOP SUMMIT

MMXXIII

EXHIBITION SHOWCASES
LIVE PERFORMANCES
KEYNOTE SPEAKERS
Q & A SESSIONS
WORKSHOPS
POP UP MARKET
COMPETITIONS & BATTLES

POWERED BY **FRESH**

FOR INFORMATION VISIT
<http://www.facebook.com/CHCHHIPHOPSUMMIT>

SEPTEMBER 23RD - 30TH 2023

FREE ALL AGES EVENTS

Christchurch City Council YCD ChristchurchNZ Christchurch Casino

NZ MĀORI GOLF IN PARTNERSHIP WITH YCD PRESENTS

KOROWHA -NAU

YCD **FRESH** TAKEOVER

FREE KOROWHA
FREE KAI & NGA INU
FREE GOLF
FOOD & DRINKS
FEAT A LIVE DJ

THURS 7TH DEC
3:30PM-5:00PM
RAWITI GOLF CLUB
100 SHAW AVE
NEW BRIGHTON, CHCH

If you're new or have never played before, No worries, Come join us for some korowha (golf), kai and music. Golf clubs provided. For rangatahi through to the whole whānau, bring them all along for some fun. Please register through the link provided.

YCD GOLF NZ LOVE X GOLF. futu:es CANTEBURY

YOUTH CULTURAL DEVELOPMENT PRESENTS

Matatiki POOL PARTY

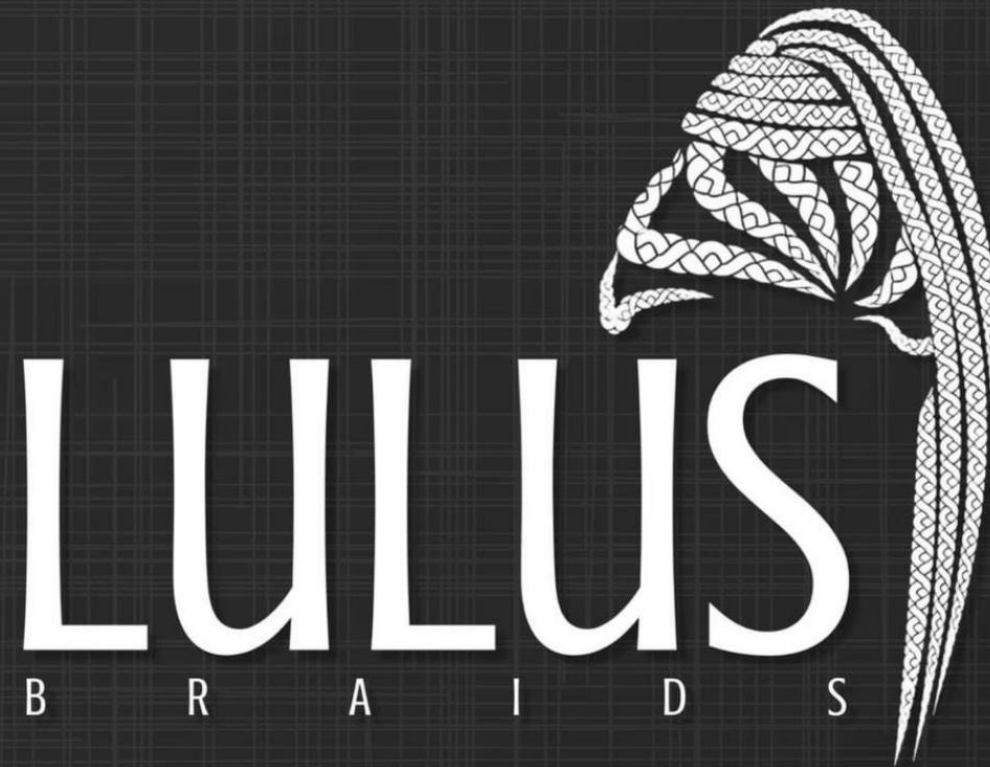
FRIDAY 14TH JUNE, 7PM-9PM
MATATIKI POOL, HORNBY

FREE ENTRY
FREE KAI & DRINKS
SPOT PRIZES
FADES & BRAIDS

YCD **FRESH** DEVELOPMENT-03

25 SMARTS ROAD, HORNBY

YCD Christchurch City Council























Sea Level vs. Alpine Fault

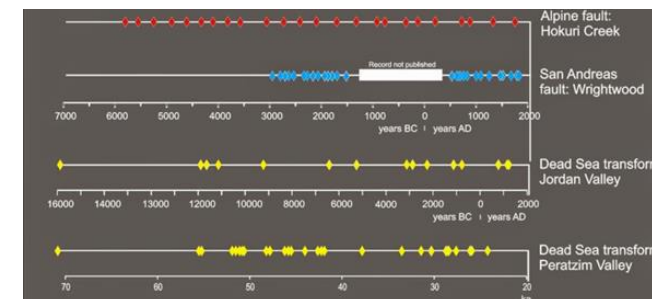
By
Robbie Dobbie
Wednesday 3rd July 2024

Who am I?

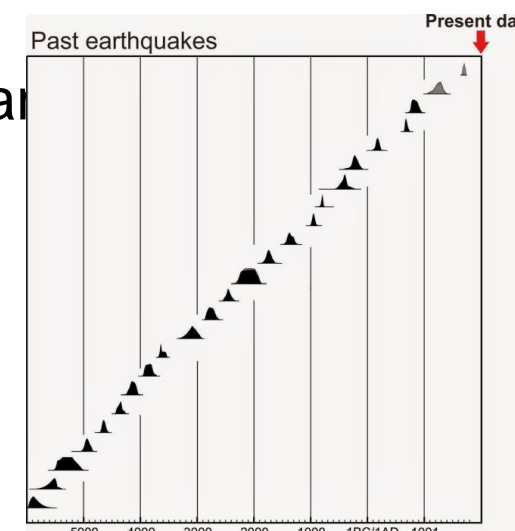
- ✓ Meteorological observer
- ✓ Geology technician
- ✓ Air Traffic Control – retrained in meteorology
- ✓ Early adopter in technology
- ✓ Data analyst & Project Manager
- ✓ Business Mentor/Coach & Strategy Consultant



Remarkably Regular History



- Alpine fault (AF) runs 850km Harold Wellman (1941-42)
- The magnitude of an earthquake is related to the length of the fault on which it occurs
- 27 earthquakes back through the past 8000 years
- Research shows remarkably **regular ruptures**
- The fault has ruptured four times in the past 900 years
 - 1717 AD 8.1 Magnitude
 - 1620 AD (97 years ? About exact location)
 - 1450 AD (170 years)
 - 1100 AD (350 years)
- We are **overdue** for the next AF earthquake



NZs Biggest EQs

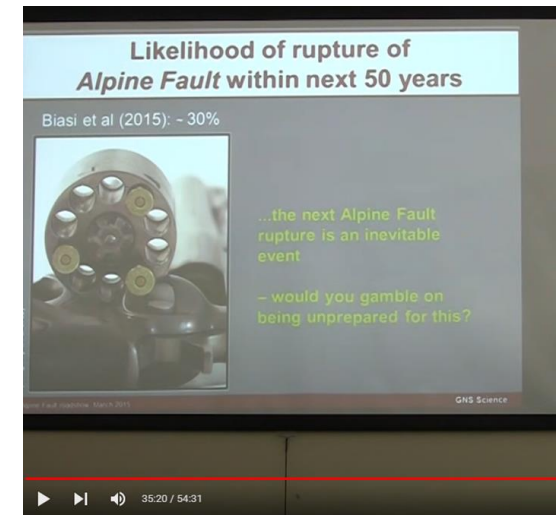
- Some predict that when it goes it will be the **biggest quake in recorded history**...certainly in NZ
- Globally it is likely to be **one of the largest on land earthquakes ever** recorded
- We are talking about an extremely large earthquake!!!

Date	Location	Magnitude	Fatalities	Further information
08 Jul 1843	Wanganui	7	2	1843 Wanganui earthquake
16 Oct 1848	Marlborough	7.5	3	1848 Marlborough earthquake
23 Jan 1855	Wairarapa	8.2	9	1855 Wairarapa earthquake
23 Feb 1863	Hawke's Bay	7.5	Unknown	
19 Oct 1868	Cape Farewell	7.5	Unknown	
01 Sep 1888	North Canterbury	7.1	0	1888 North Canterbury earthquake
12 Feb 1893	Nelson	6.9	Unknown	
16 Nov 1901	Cheviot	6.9	1	1901 Cheviot earthquake
09 Mar 1929	Arthur's Pass	7.1	Unknown	1929 Arthur's Pass earthquake
17 Jun 1929	Murchison	7.8	17	1929 Murchison earthquake
03 Feb 1931	Hawke's Bay	7.9	256	1931 Hawke's Bay earthquake
13 Feb 1931	Hawke's Bay	7.3	-	Aftershock to 3 Feb 1931
05 Mar 1934	Pahiatua	7.6	2	
24 Jun 1942	Wairarapa	7.2	0	
02 Aug 1942	Wairarapa	7.0	1	
26 Jun 1946	Lake Coleridge	6.2	0	
24 May 1968	Inangahua Junction	7.1	3	[2] 1968 Inangahua Junction earthquake
02 Mar 1987	Edgecumbe	6.3	0	1987 Edgecumbe earthquake
13 May 1990	Weber	6.4 ^[9]	0	
18 Jun 1994	Arthur's Pass	6.7 ^[10]	0	
06 Feb 1995	East Cape	7.0	0	
22 Aug 2003	Fiordland	7.1	0	
22 Nov 2004	Puysegur Trench	7.2	0	
20 Dec 2007	Gisborne	6.8	0	2007 Gisborne earthquake
15 Jul 2009	Fiordland	7.8	0	2009 Fiordland earthquake
04 Sep 2010	Darfield, Canterbury	7.1 ^[11]	0	2010 Canterbury earthquake
29 Sep 2010	White Island	6.4	0	
22 Feb 2011	Christchurch	6.3	185 confirmed, 182 expected ^[12]	2011 Christchurch earthquake

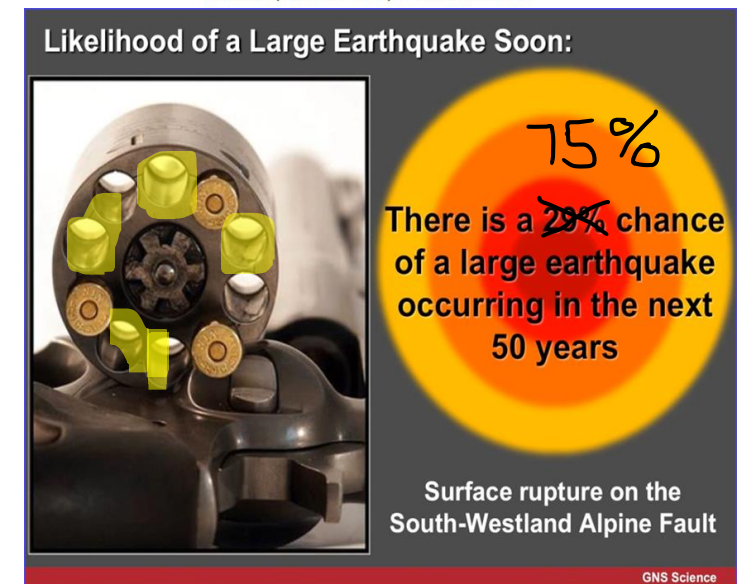
185

75% Chance before 2070

- ✓ Meeting of the:
 - Pacific Plate – moving SW
 - Australian Plate – moving NE
- ✓ Stuck and will release in a large earthquake
- ✓ Southern Alps show fast movement by global standards
- ✓ Expected to last 4+ minutes
- ✓ 2021 likelihood revised to be a 75% chance of large (to great) earthquake in the next 50 years

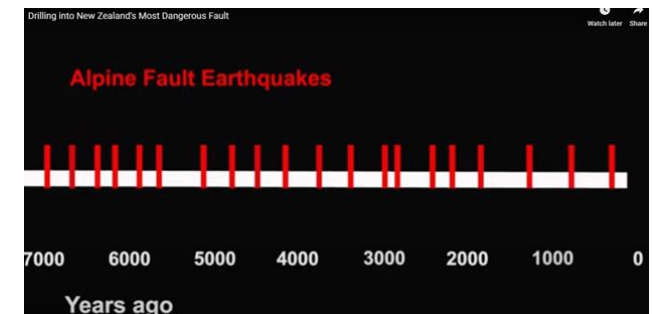


The Next Alpine Fault Earthquake in New Zealand



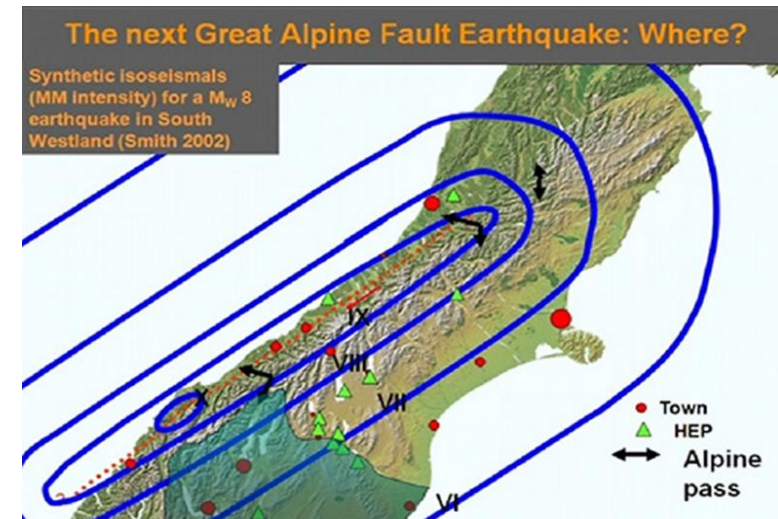
Pacific Plate Rising Up Over Australian

- ✓ Best example world-wide of an earthquake that could rupture in a magnitude 8+ earthquake and hasn't in the last 300 years
- ✓ High chance it will be the biggest earthquake since European settlement of New Zealand
- ✓ The Pacific & the Australian Plates – twisted plate boundary
- ✓ *Southern end* – Pacific plate going over the Australian plate
- ✓ Vertically lifting the Southern Alps 1+cm/year (Approx 3 – 4 m)
- ✓ It will have a major impact
- ✓ AF End of its seismic cycle



In 2007 They Were Saying...

- Likely to rupture very soon
- *Current pressures on plates make it probable that the next earthquake on the Alpine Fault will occur **in the next 1 – 20 years** (3+ years left!!!)*
- The further we look into the future, **the less likely it becomes because it is most likely to occur now!**
- The probability is increasing every year
- ***The longer it goes without rupture, the bigger it will be, and the worse are its consequences***



The Magnitude Scale is Logarithmic

This means that if you add 1 to an earthquake's magnitude, you multiply the shaking by 10. An earthquake of magnitude 5 shakes 10 times as violently as an earthquake of magnitude 4...

7.0 intensity of -1

7.5 intensity of – 11

8.0 intensity of – 63

8.5 intensity of – 354

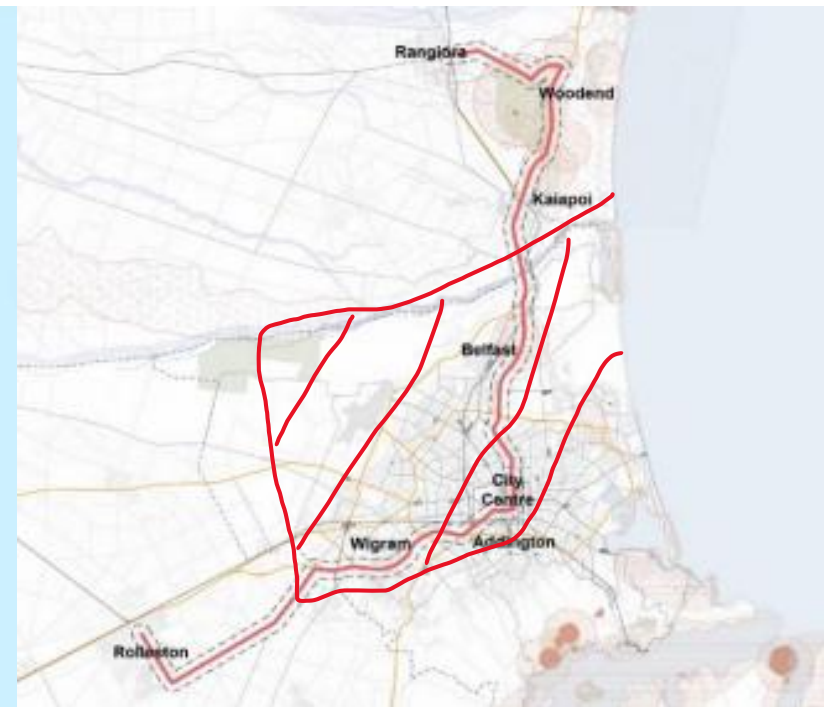
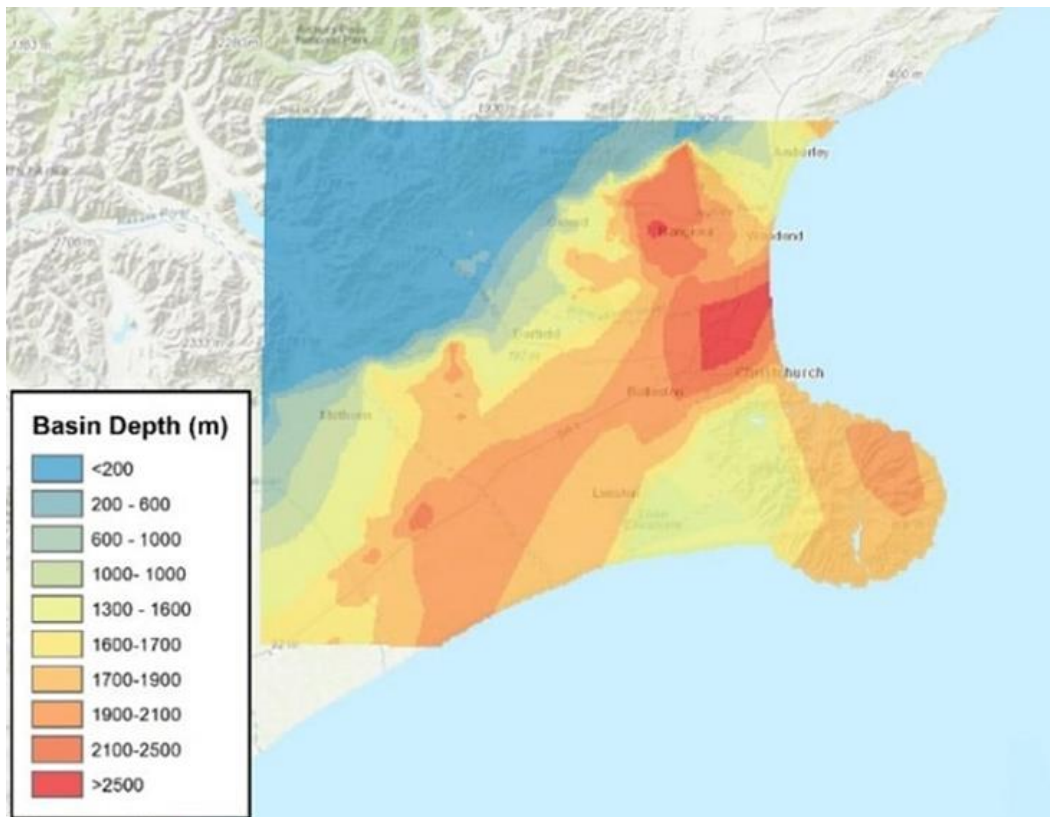
9.0 intensity of – 1995

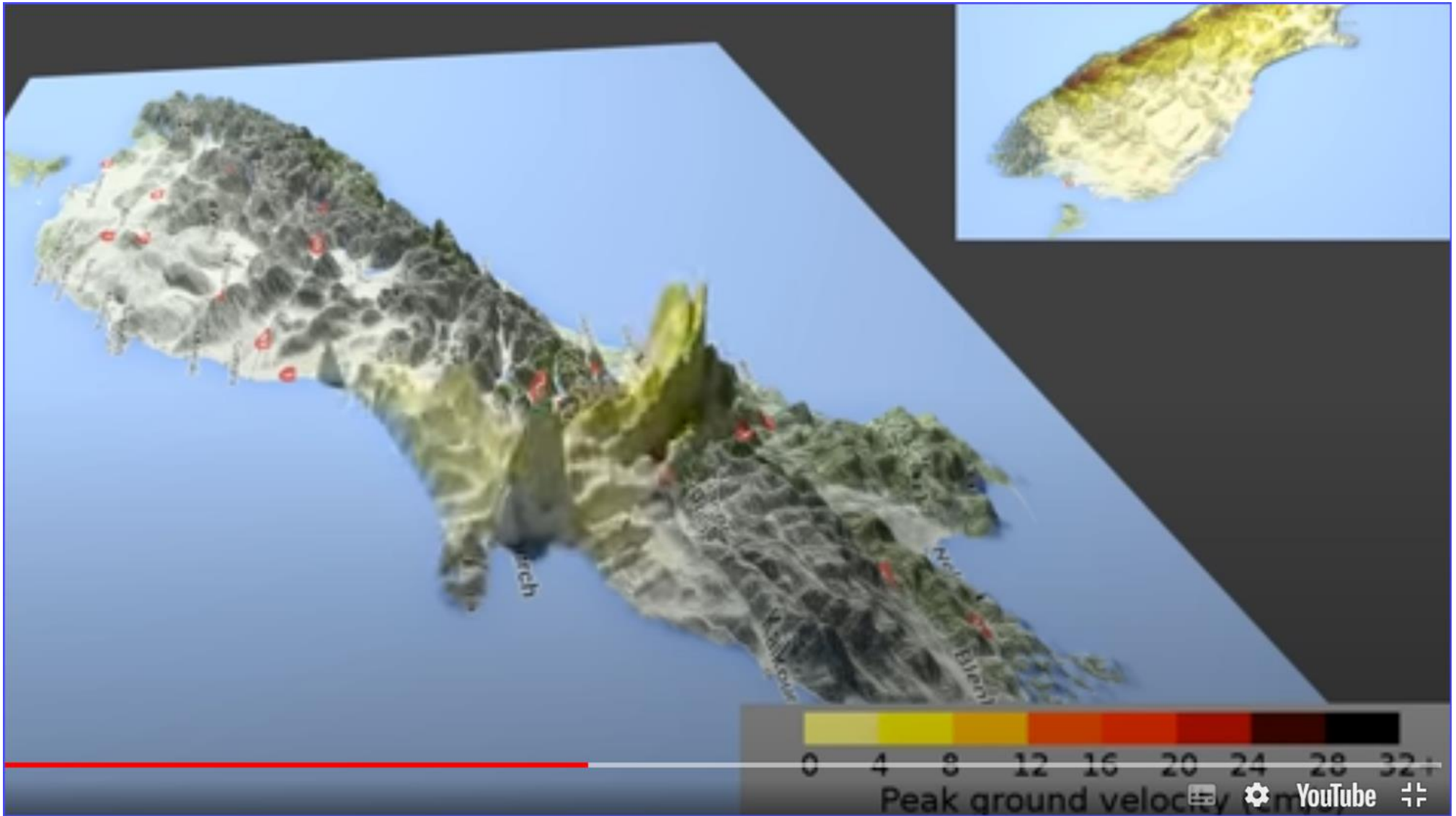
A key difference is instead of lasting 10 seconds (Sept 2010) we are **likely to have shaking in Christchurch for 90+ seconds**

Alpine Fault Quake ‘More Damaging’ for Plains

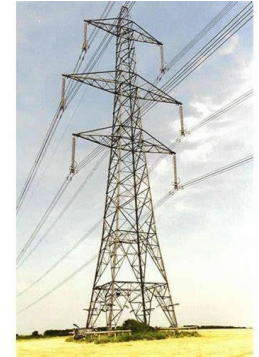
- “The Canterbury Plains could suffer more damage in an AF quake than some areas closer to the fault”
- AF is going to be such a widespread event – less support as people “all going to be dealing with their own issues”
- Professor Brendon Bradley – computer simulation
“Our simulations indicate that this large energy that enters the sedimentary basin, the soft soils that the Canterbury Plains reside on, leads to a lot of trapping of what we call surface waves”.
- Result – Canterbury ground shaking a lot stronger – will last longer than regions around SI without those features

Christchurch on Susceptible Land





Impact on Electricity



- There will be damage to hydro electrical generation & pylons as well as transmission lines
- Immediate **shut down** of South Island power generation
 - need electricity to restart
- Inter-island connection vulnerable – impact North Island
- Each pylon takes 2-7 days minimum to repair/replace
- Electric vehicles will be mostly unable to operate
- Electricity supply is likely to be unavailable for many weeks or even months in some areas
- Electricity loss will hinder response and recovery
- Will need solid fuels back-up for preparedness

Cascadia 8.0 example – On Mainland USA

Critical Service	Zone	Estimated Time to Restore Service
Electricity	Valley	1 to 3 months
Electricity	Coast	3 to 6 months
Police and fire stations	Valley	2 to 4 months
Drinking water and sewer	Valley	1 month to 1 year
Drinking water and sewer	Coast	1 to 3 years
Top-priority highways (partial restoration)	Valley	6 to 12 months
Healthcare facilities	Valley	18 months
Healthcare facilities	Coast	3 years

Impact on Infrastructure

- Soft soil deposits amplify shaking for longer period ground motions
- **Disproportionately high damage for mid-rise and high-rise buildings**
- Telecommunications – **no copper lines** so reliant on electricity
- **Roading will be out for a period** – some roads could take more than six months – **many bridges will be out**
- Shortage of materials for repairing/rebuilding
- **Water, sewerage, energy, transport, health and social services are likely to be disrupted for weeks**
- **No Support** – everyone will have their own things to deal with

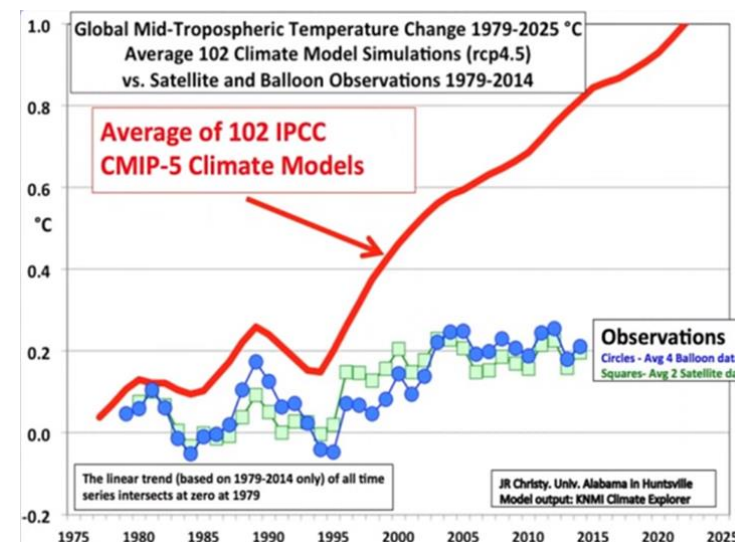


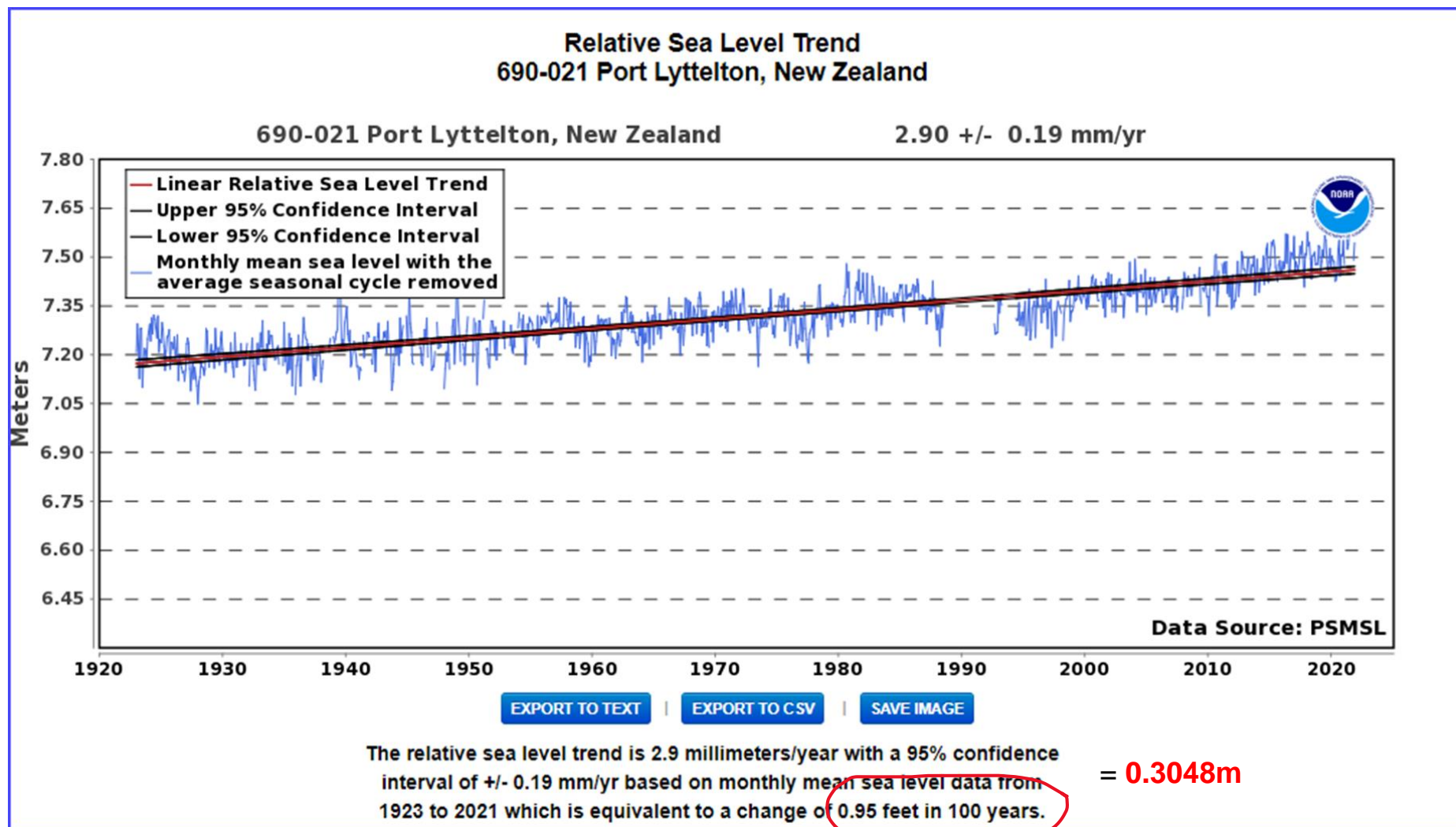
Facts vs Modelling

- Real Climate Data Sets from Satellites and Weather Balloons
- [Dr John D Christy on Making Sense of Data in the Climate Change Debate](#) (14:05)

Vs.

- Media bias – dramatizing extremes
- Theories – based on assumptions
- All models are wrong, but some are useful – (NZ Scientist)
- [NIWA missing data](#)
- IPCC included some flawed data





Mean Sea Level Linear Trends (mm/year) for six tide=gauge sites

	1901-2020		1901-1960		1961-2020	
Site	Trend (mm/year)	Standard Dev (mm/year)	Trend (mm/year)	Standard Dev (mm/year)	Trend (mm/year)	Standard Dev (mm/year)
Auckland	1.71	0.08	1.83	0.21	2.54	0.21
Wellington	2.04	0.09	1.23	0.26	2.84	0.18
Lyttelton	2.24	0.09	1.33	0.25	2.77	0.20
Dunedin	1.52	0.08	0.69	0.20	1.76	0.20
New Plymouth	N/A	N/A	N/A	N/A	1.05	0.34
Mt Maunganui	N/A	N/A	N/A	N/A	2.26	0.26

At Moturiki, the data series used to calculate the 1961-2020 trend starts in 1974 not 1961.

The Lyttelton tide gauge showed the highest long-term trend in relative sea-level rise

The relative mean sea level (including vertical land movement) at individual sites was:

Auckland	1.71	0.08				
Wellington	2.04	0.09				
Lyttelton	2.24	0.09				
Dunedin	1.52	0.08				

[From Stats NZ website](#)

(0.224 m in 100 years)

NIWA's Aotearoa-New Zealand 1% AEP extreme sea level flooding viewer

By continuing you acknowledge you have read and accepted this application's license terms and disclaimer.

Sea-level rise increment calculator

Choose your values

Input choices

Choose mean sea level base...
1995-2014 (IPCC AR6), centr...

Choose SSP-RCP scenario
SSP1 - 2.6 M (median)

Choose a target year
2095

Choose vertical land motion ...
0.0 mm/year

Relative Sea Level Rise
(in centimetres)

41
cm

Relative Sea Level Rise
(in metres, rounded up to nearest
decimetre)

0.5
m

- Use the inputs in the sidebar to choose inputs for
 - Vertical Land Motion, [Find vertical land motion here](#)
 - Target Year,
 - SSP-RCP scenario, and
 - Mean Sea Level Baseline Period (RSLR projections start from a zero mean sea level in the base year)
 - The "1995-2014 (IPCC AR6), centred 2005" mean sea level base should be selected for compatibility with the extreme sea level flooding maps.
- The value output shown can then be used to adjust the slider in the main window on the left of the screen to show the respective forecast extent
- This SLR calculator uses MfE sea-level rise projections

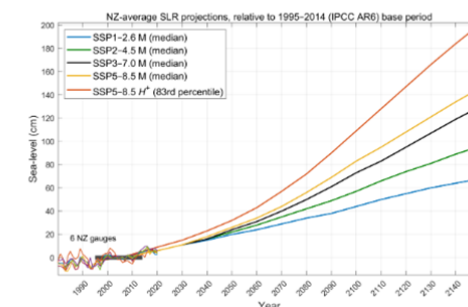
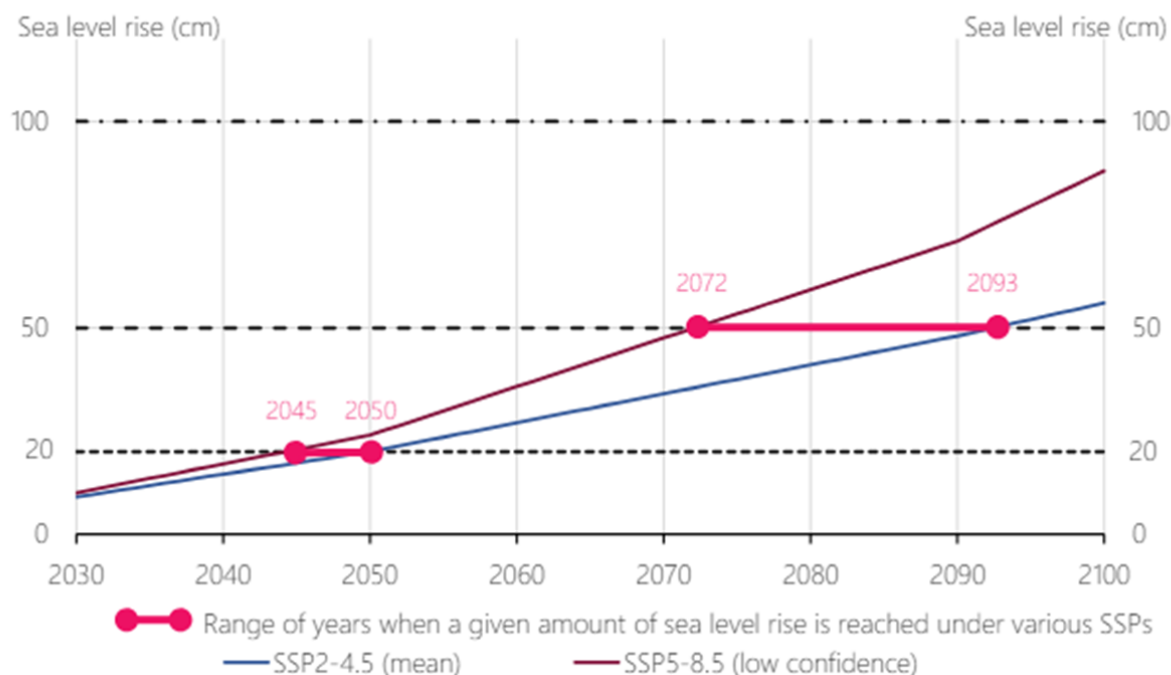


Figure 1: Global sea level projections for range of Shared Socioeconomic Pathway scenarios, relative to 1995-2014 baseline



Data based projection of the Alpine Fault rupturing – 75% probability by 2071

Versus

The RBNZ 2022 sea level *prediction*

Mean rise 0.5m by 2093

Best Case – not provided

Worst case – 0.5m by 2072
sea-level rise from **IPCC** modelling

Dr J Christie satellite / weather balloon actual data vs IPCC exaggerated modelling figures

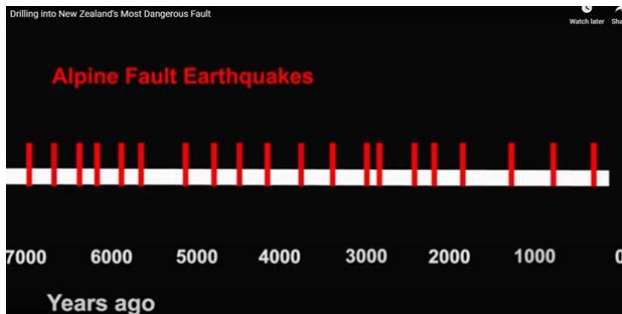
When the Alpine Fault Slips

It displaces the rocks on either side horizontally and vertically:

- ☐ Rocks on the **eastern side** of the fault move southwest-wards &
- ☐ **Upwards (3m+)**

Over time, rocks buried deeply beneath the Southern Alps are brought to the surface





Alpine Fault

- Remarkably Regular Rupturing
- 75% Probability by 2070
- 3+m land uplift in south by 2070
- 82% chance of 8+ fault
- Moderate for City (B likelihood)
- Catastrophic for Canterbury (C likelihood)
- Deaths may happen

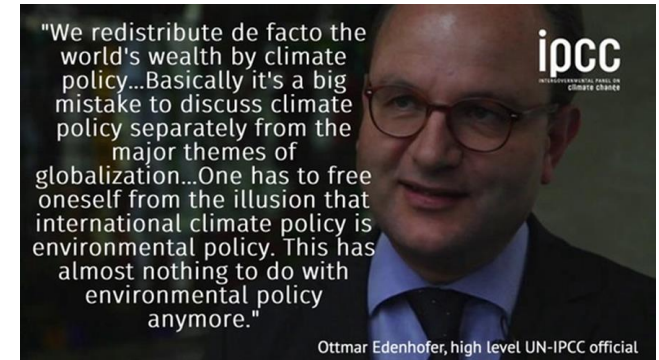
Where to Focus?

Sea-level Rise

- Modelling – IPCC global
- Prediction
- 0.5m by 2093 (mean)
- Low confidence by 2070
- Insignificant (C likelihood)
- Minor (A Likelihood)
- Gumboots likely



Why Pay for “experts”



- IPCC adjusted data – given to Tonkin & Taylor
- \$28.575 Million spent by CCC with Jacobs 2013 – 2023
US company – profits going back to the US
- Retain environmental research & profits locally
- Remove coastal adaptation costs from LTP – reduce rates
- Example of “Redistribution of Wealth” by climate policy

Be Ready

For most people, the true risk won't be the earthquake itself.
The true risk is not ***being ready*** for the earthquake's ***aftermath***.

As we ***take steps to prepare, the fear will dissipate.***
It will transform into ***determination.***

Plan & Prepare
Then more residents will survive the event and the aftermath.

References

New Zealand's largest fault line, the Alpine Fault, is even longer than previously thought – Jun 2023

<https://www.youtube.com/watch?v=UME4QhHddcY>

The Big Bad News about the Alpine Fault – 2021

<https://youtu.be/5fUj7zjbAFw>

New Zealand's Twisted Plate Boundary – 2020

<https://www.youtube.com/watch?v=POUwntNPFmc>

Earthquake Risk in New Zealand: A Major Model Update – Feb 2019

<https://www.air-worldwide.com/Publications/AIR-Currents/2019/Earthquake-Risk-in-New-Zealand--A-Major-Model-Update/>

New study says Alpine Fault quake interval shorter than thought: GNS Science – Mar 2017

<https://www.stuff.co.nz/science/90081709/new-study-says-alpine-fault-quake-interval-shorter-than-thought-gns-science>

Alpine Fault quake more damaging for plains – May 2016

<https://www.rnz.co.nz/news/regional/304705/alpine-fault-quake-'more-damaging'-for-plains>

UC Connect: What will an Alpine Fault earthquake feel like? - 2016

<https://www.youtube.com/watch?v=WkNXFrTkVNc>

The Next Alpine Fault Earthquake in New Zealand

<https://www.youtube.com/watch?v=tfj8MIAxec4>

Drilling NZ's Most Dangerous Fault – 2014

<https://www.youtube.com/watch?v=n9ZPq5FRmnE>

BBC – Christchurch earthquake: Your stories - 2011

<https://www.bbc.com/news/world-middle-east-12534169>

More References:

Surviving Cascadia

<https://survivingcascadia.com/>

Climate Change Risk Screening

[CC STR5669-District-Climate-Change-Risk-Screening-document-WEB.pdf](#)

CDEM Group Plan

<https://www.cdemcanterbury.govt.nz/media/25kfft0/canterbury-cdem-group-plan-2022-08.pdf>

Canterbury AF8 Risk Profiles

<https://fyi.org.nz/request/24800/response/101304/attach/5/Canterbury%20Risk%20Profiles%20AF8%20Report%20Final.pdf>

Methven Public Science Talk – AF8 Roadshow 2021

<https://www.youtube.com/watch?v=rbZk7RquQ0U>

How a magnitude 8+ Alpine Fault earthquake would impact New Zealand – and where will be worst-affected

<https://www.newshub.co.nz/home/new-zealand/2021/04/how-a-magnitude-8-alpine-fault-earthquake-would-impact-new-zealand-and-where-will-be-worst-affected.html>

Magnitude of Earthquake Related to Length

<https://studybuff.com/what-are-the-biggest-fault-lines-in-the-world/>

Waihoru Spreydon-Cashmere-Heathcote Community Board Report to Council

Te kaipāhō (Presenters):
Callum Ward, Chairperson
Keir Leslie, Deputy Chairperson



Decisions made under delegations

Approved the following applications from our Discretionary Response Fund:

- Avon Sequence Dancers
- Kereru Sports & Cultural Club Incorporated
- Cashmere Bowling Club Incorporated
- John Marsh Heathcote Valley Food Forest, Birdsey Reserve
- Celia Hogan, Hansen Park Nature Play Space
- Heathcote Community Garden

Decisions made under delegations

Public Forum

- Rebecca Finch and Jane Higgins spoke on behalf of the Simeon Park Community Group regarding the installation of a tap at Simeon Park and requested the removal of the invasive species Maytenus, from the park.
- Pete Franklin and Geoff Holgate spoke on behalf of The Coastal Access Group regarding historic and current access issues with respect to the Redcliffs foreshore.
- Adrian Ramsay spoke about a large tree on his property and his application for its removal.



Official naming of Validation Park and Validation Place



**Our Board's ambition is
liveable communities!**

Waipuna Halswell-Hornby-Riccarton Community Board Report to Council – 3 July 2024

Te kaipāhō (Presenters): Marie Pollisco, Chairperson



1

Decisions made under delegation

Reports to the Board

- Tree Planting plans for 2024 Urban Forest Tree Planting Projects
- Epsom Road / Middlepark Road Intersection - Proposed No Stopping Restrictions
- Wigram Road maintenance depot and staff facilities
- Youth Development Fund Transfer and Discretionary Response Fund Applications - Emmanuel Christian School and Citizens Advice Bureau Christchurch Area Incorporated
- Progress on Community Board Plan Priorities
- Community Service and Youth Service Awards 2024

Youth Development Fund allocation

- Badminton Canterbury Inc towards seven students participating at the New Zealand Junior Team Badminton Championships 2024 in Palmerston North.

Off the Ground Fund allocation

- Peter Simmonds towards the We Heart Harrington Park – Mulching and BBQ Social Event.

Youth initiatives



Huritini Student Council, Gear Up Ōtautahi & Youth and Cultural Development – FRESH Matatiki Pool Party

We Heart Harrington Park – Mulching and BBQ Social Event



The successful event was held on Saturday 25 May with the community working together to add mulch to the pathway area near the Piko Crescent entrance to Harrington Park. A sausage sizzle was also provided for attendees to enjoy.

Information session at Ngā Puna Wai Sports Hub

A community information session was held at Ngā Puna Wai on Tuesday, May 21st, to discuss the Access Review Management Plan.

The review, which has been completed, provided a snapshot in time of access management in and around the venue.



Thank you!

Waitai Coastal-Burwood-Linwood Community Board

Report to Council – July 2024



Presenters: Paul McMahon, Chair and Jackie Simons, Deputy Chair

1

Highlights from the Ward Area

Linwood Avenue Community Trust Family Kai Nights

The trust is hosting a monthly Family Kai Night on the 4th Tuesday of each month. The night is run as a restaurant type experience, providing opportunities for families who would usually not be able to afford to eat out. With space for 50 to attend their first two sessions saw close to 40 people attend despite being fully booked in advance. The trust has found those attending is not usually connected with their other services and have been able to supply school back packs, stationery and reading books to many tamariki and engaged with new members of the community that required assistance but did not know who to contact and have now been referred to other agencies which can provide them with the necessary support.

2



Highlights from the Ward Area



Youth Week – YCD Festival of Diversity

YCD ran a number of events across their Festival of Diversity which aligns with NZ Youth Week. Despite poor weather across the week cancelling many outdoor events planned their Pool Party at Te Pou Toetoe and Move X Bromley events proved again to be extremely popular with the local Rangatahi and Tamariki.

Highlights from the Ward Area

Edible and Sustainable Garden Awards 2024

On Monday 10 June 2024, the Board held a small ceremony for the 2024 Edible and Sustainable Garden Awards. There was a total of 5 recipients in the ward area with four of them also receiving special awards.



Advocacy

Portlink



Tsunami Evacuation

Coastal Hazards Adaptation Planning



Coastal Flooding



Coastal Erosion



Rising Groundwater

Thank you!

Te Pātaka o Rākaihautū Banks Peninsula Community Board Report to Council – June 2024



Presenters: Lyn Leslie, Chairperson & Penelope Goldstone, Community Governance Manager Banks Peninsula

Decisions Made Under Delegation

- Lyttelton Reserve Committee Urumau Triennial Plan
- Akaroa Recreation Ground - Part change in Reserve classification.
- Discretionary Response Funding:
 - \$5,000 to Akaroa Volunteer Fire Brigade - Thermal Imaging drone;
 - \$2,450 to the Stoddart Cottage Trust - dehumidifier and a gallery hanging system.
 - \$1,958 to the Te Mata Hapuku Birdlings Flat Community Centre - establishment of a Community Hub.
- Akaroa Area School - \$10,000 Solar Pool Cover Project.



Community Engagement

Public Forums

- Project Lyttelton
- Sustainability by Design
- The Lyttelton Community Reserves Conservation Award Team
- Governors Bay Community Association

Correspondence

- Akaroa and Bays Forum – concerns about the Akaroa Wastewater Project.



Community Focus

**Little River to Cooptown
Shared Use Pathway –
finished!**

**Draft Banks Peninsula
Facilities Audit**



Thank you!
Ngā mihi nui



Waimāero Fendalton-Waimairi-Harewood Community Board

Report to Council – 3 July 2024



Presenters: Jason Middlemiss (Chair) and Bridget Williams (Deputy Chair)

Decisions made under delegations

- Approved a new lane name for 69 Crofton Road
- Approved the native planting plan along Ilam Stream in Avonhead Park
- Approved No Stopping Restrictions on Withells Road, Avonhead
- Approved the relocation of a bus stop on Clyde Road
- Approved Better-Off Fund applications to the following groups/projects:
 - Wildlife Veterinary Trust
 - St Mark's Presbyterian Church, Avonhead
 - Community BBQ at Bishopdale Park
 - Burnside West Christchurch University Cricket Club
 - Installation of picnic tables at Belfast Community Pool
 - Orana Park Operations Review

Decisions made under delegations

- Approved two applications to the Board's Discretionary Response Fund
- Approved two applications to the Board's Youth Development Fund

Public Forums/Deputations

- Louise and Kevin Phillips and residents of Bryndwr Road spoke to the Board regarding the condition of the street.
- Charlotte Gavin updated the Board on the re-establishment of the Belfast Residents' Association.
- Deputation from Judith Watson regarding the Crofton Road lane name.

Bryndwr Road

Over 30 residents of Bryndwr Road attended our last Board meeting to speak about the conditions of Bryndwr Road.

They presented a petition signed by 96 residents of the street.

Residents are very concerned and frustrated by the health and safety issues created by the very poor condition of the gutters, footpath and road.



Juniper Reserve Community Engagement

Council staff have been engaging with pupils from Roydvale School around the tree planting plans for Juniper Reserve.

The young people are keen to work with Council to make Juniper Reserve a more welcoming place for everyone.



Englefield Reserve Community Planting Day

20 July 2024 – 10am-1pm

Englefield Reserve in Northwood has been selected as part of the Summer in the Styx programme where all nearby residents will be delivered a free tree.

If they don't wish to plant it at their home, they can bring it down to the community planting day and have it planted at the reserve.

FREE TREES PROJECT!

Englefield Reserve
Community, keep an eye out!

The Englefield Reserve
Community has been selected to
receive free trees to plant in
their backyard the week of the
15th July! These will be dropped
to your doorstep with
instructions.

If you don't have space or want
your plant, you can bring it to
the Community Planting at
Englefield Reserve on 20th July
from 10am-1pm (look at the
event on our page).



Youth Achievement Event

On 20 June, our Board held a function at the Russley Golf Club to acknowledge the achievements of local young people who have received funding during the year from the Board's Youth Development Fund.



Thank you!

Waipapa Papanui-Innes-Central Community Board

Report to Council for June 2024



Presenters: Emma Norrish and Simon Britten
3 July 2024

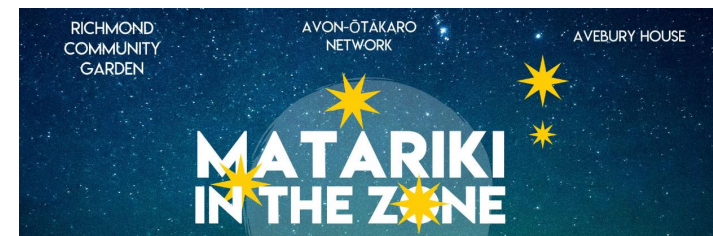
Decisions made under delegations

Meeting at the Multicultural Recreation & Community Centre – 13 June 2024

- **Reports to the Board:**
 - Shirley Community Reserve: Proposed Community Facility
 - Request for an Alcohol Ban – Edgeware Village
 - 2024 Community Boards' Conference – Board Members Attendance
 - Waipapa Papanui-Innes-Central Community Board Area Report – June 2024



Decisions made under delegations



▪ Discretionary Response Fund allocations:

- \$3,000 to Avon Ōtākaro Network Inc. towards the Matariki in the Zone event on 29 June 2024
- \$3,000 to Forfar Preschool and Nursery towards the Nursery Outdoor Play Project and Winter Heating
- \$2,000 to the Shirley Toy Library Incorporated towards operational expenses
- \$2,600 to the Edgeware Croquet Club Inc. towards their Lawn Maintenance project
- \$5,000 to Nomads United Association Football Club Incorporated for footballs and volunteer expenses
- \$4,500 to Papanui Boxing Club Incorporated towards equipment and uniforms
- \$3,500 to St James Croquet Club towards its operating costs
- \$600 to Redwood Ladies Friendship Club towards monthly community activities and events
- \$3,500 to Redwood Scout Group towards building insurance cover
- \$2,200 to The Village Community Centre for the Drop In Programme equipment

Decisions made under delegations

▪ Youth Development Fund allocations:

- \$500 to McKenzie Bailey-McDowell towards the costs of competing at the 2024 World Qualifying Championships from 23 Jul-27 August 2024 in Brazil as part of the New Zealand U18 Women's Softball team
- \$500 to Kaipo Ngai-Tokowaru towards the costs of competing at the Australian Junior Volleyball Championship in Adelaide from 6-15 July as a member of the New Zealand U20 Junior Men's Volleyball Team

▪ Public Forum:

- Hannah and Grace Weston – Youth Fund Report
- Margot Korhonen – “Creating Connected Communities”
- Richmond Residents and Business Association (RRBA) – Requesting Alcohol ban for Richmond Village
- Brigitte McKenzie-Rimmer – Issues of over-intensification
- Ian Harvey and Des Banks – Adverse impact of road works associated with the Innes Road Street Renewal

▪ Correspondence:

- Tom Vesty – Youth Fund Report
- Danalla Latu-Sa and Kendall McGregor – Youth Fund Report

Community Board Plan

Shirley Community Reserve

The decision requesting staff initiate the process to design an 'on budget building' on the reserve that will enable its mixed use, supporting recreation, play and social connections, is a significant step in fulfilling the Board Plan priority that the reserve be a destination of choice for the community, a safe space, a place that enhances well-being, and provides a place for social connection.



Community Liaison

Neighbourhood Trust AGM

Board members and staff attended the 25th Neighbourhood Trust AGM on 19 May, which commenced with a karakia giving thanks for the last 25 years and special thanks was given to all the volunteers, staff, volunteers, and funders that have supported the Trust over the years.



Strengthening Communities Together

Enabling active and connected communities to own their futures

Community Liaison

Parks Update

Native plantings in Beverley Park with Step Ahead Trust, working on planting around some of gaps in the carpark borders .

A maintenance session at Essex Reserve with the community lead for the Pocket Parks Projects, Garden Facilitator at Phillipstown Hub, and the Salisbury Street Foundation.



Strengthening Communities Together

Enabling active and connected communities to own their futures

Community Liaison

Shirley Village

Shirley Village Project has an amazing video introduction to their work.

Their mission is to achieve a shared local vision: to make Shirley a caring, colourful, connected community where residents thrive and have a real sense of ownership and pride in their surroundings and community.



Strengthening Communities Together

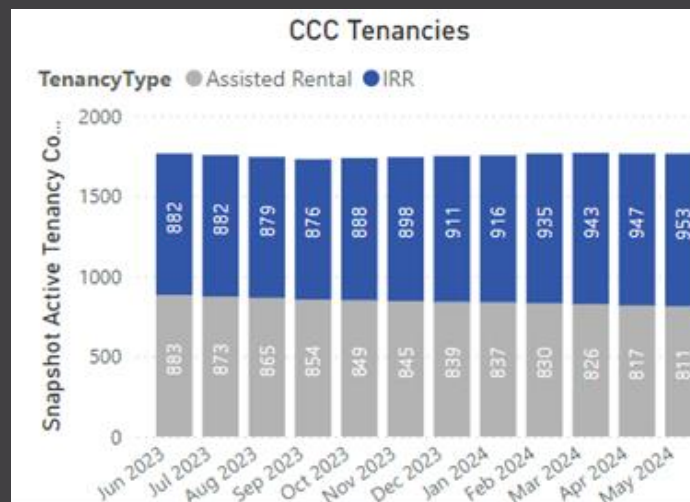
Enabling active and connected communities to own their futures

Christchurch
City Council

Thank you!

Community Housing Update

**1912 Units
(2110
Bedrooms)**



**Fund
Forecast
Balance
\$2.775 m**

Key Statistics





Policy Considerations

- IRRS Redirect Capping
- New funding

Questions / Views