

Waitai
Coastal-Burwood-Linwood Community Board
MINUTES ATTACHMENTS

Date: Monday 8 July 2024
Time: 4.30 pm
Venue: Boardroom, Corner Beresford and Union Streets,
New Brighton

TABLE OF CONTENTS NGĀ IHIRANGI	PAGE
4.2. Public Forum - Jack Halliday Mairehau Road	
A. Jack Halliday - Mairehau Road slide	3
9. Tree Planting Plans	
A. Urban Forest Tree Planting Plans Presentation	4
8. Briefings	
A. CWTP Odour Community Board Update	16



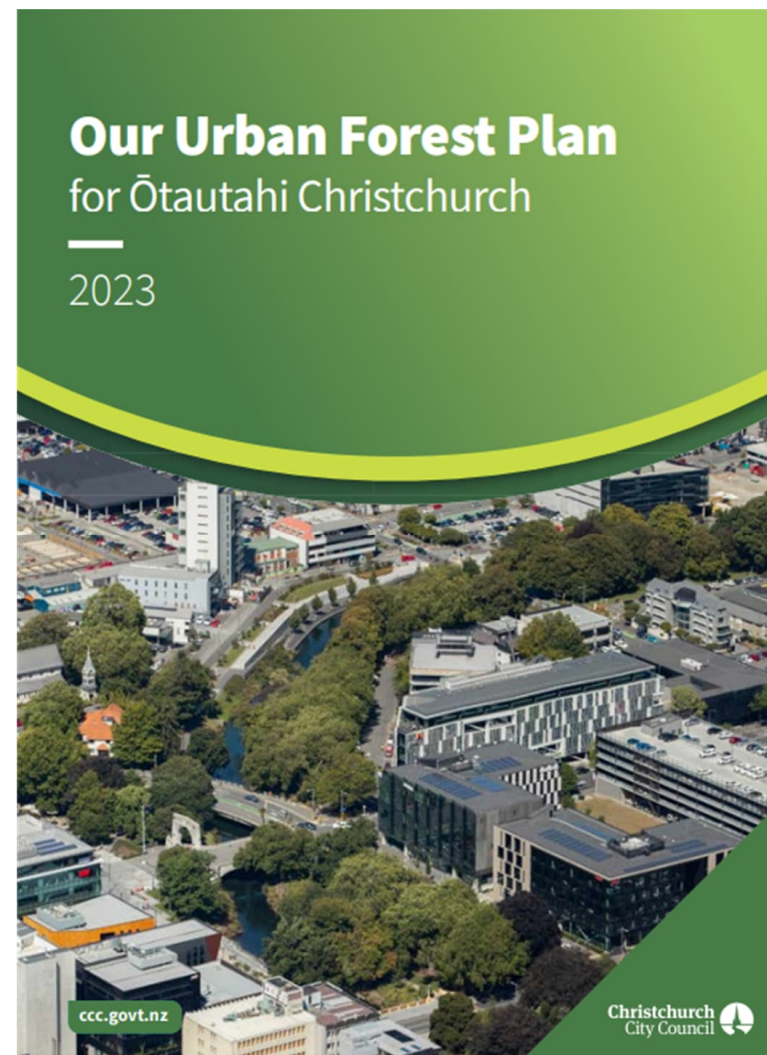


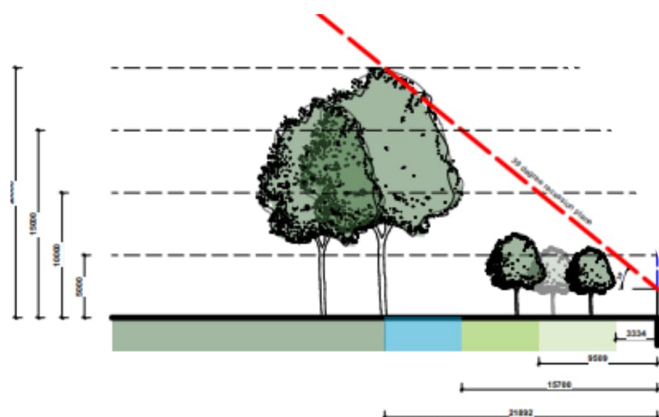
Urban Forest Tree Planting Program

Tree Planting Plans for Arran Playground, Radley Playground, Sea Eagles Reserve, Bayswater Reserve, Fairway Reserve, Glenroy Reserve, St Lukes Reserve

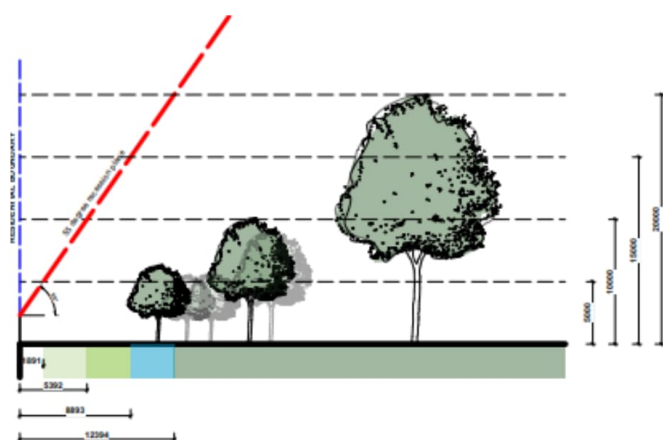
The Urban Forest Planting Program

- Increase canopy cover across our city
- Focus on getting the overall canopy cover within our Parks spaces to 40%
- Providing for a network of native forest patches across the city
- Increasing the visibility of indigenous species
- Planting trees in sites that are able reach maturity





B SECTION B-B
Scale: 1:500



D SECTION D-D
Scale: 1:500

Determining location of trees

Recession planes to manage shading

Off-sets from paths to avoid damage

Boundary off-sets to avoid boundary encroachments

Existing use of park

Location of underground services

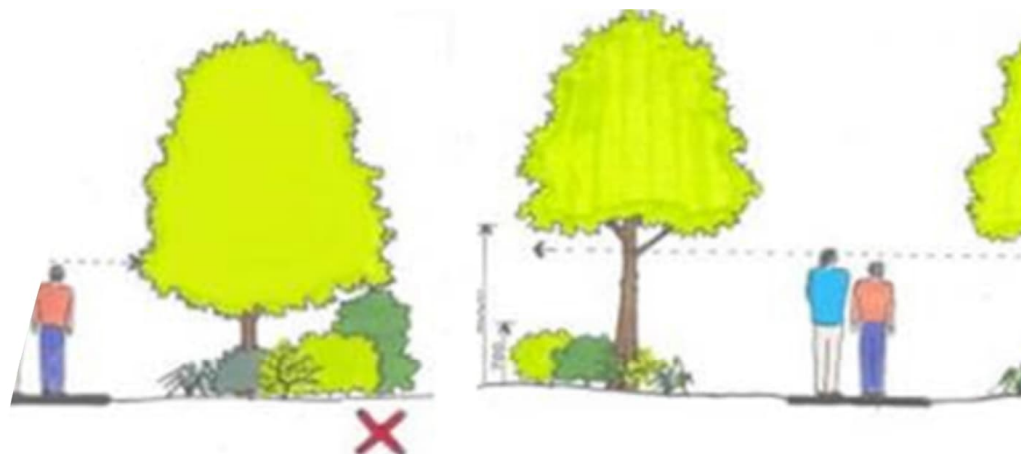
Future plans for the park

Distribution of indigenous forests nearby

Location of waterways

Addressing safety concerns

- Planting is setback from paths
- Trees proposed are primarily specimen trees with lower branches removed
- Density in most situations will be at least 5m apart.



Arran Park

Fast facts - Arran Playground



- No Submissions
- No Changes to Consulted Plan



Radley Playground

- 3 submitters
- 2 strongly support
- 1 somewhat oppose

Fast facts - Radley Playground



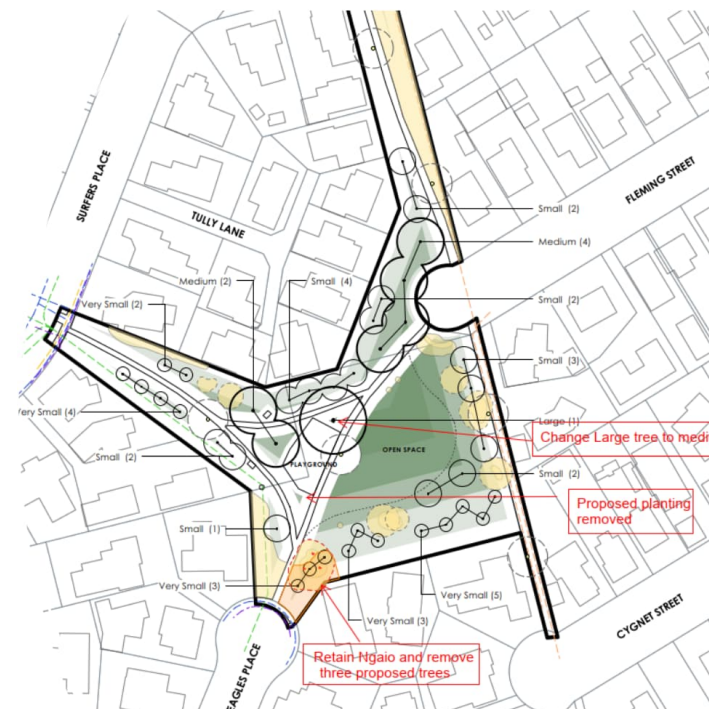
In response to the feedback, staff will be planting deciduous trees to manage shading in winter. Trees will also be managed to ensure visibility into the park is maintained, this will be achieved through the removal of lower branches as the tree grows to provide a clear lower stem.

Sea Eagles

- 8 submissions
- 6 support
- 2 oppose

SEA EAGLES RESERVE		
Park Canopy Cover Summary		
Existing number of trees		14
Existing canopy cover	approx.	28%
Proposed number of new trees		37
Proposed net canopy cover (existing vegetation and proposed)	approx.	45%

- Based on the feedback received during the consultation, staff will now be retaining the Ngaio which was originally proposed for removal. Staff will also be maintaining the trees to have a clear lower stem which will remove the ability for people to hide under them.
- Staff have also altered the plan to remove the proposed planting site near a concerned resident and lower the height of one tree from large to medium.



Bayswater

- 13 Submissions
- 10 Support
- 2 Oppose

Existing number of trees	76
Existing Canopy cover	7%
Proposed number of trees	199+ 2237m2 Native riparian
Proposed net Canopy cover	40%



Image on left shows the proposed planting that went out for consultation and the image on the right shows the updated proposal which includes a large open space within the park. Staff will also ensure that planting is sufficiently spaced and trees are lifted to provide view lines between the playground and the open field area.

Fairway Reserve

- 9 Submissions
- 6 Support
- 1 Neutral
- 2 Somewhat Oppose

Existing number of trees	64
Existing Canopy cover	10%
Proposed number of trees	97
Proposed net Canopy cover	43%



Images above show the proposed plan that went out for consultation (Left) and the updated plan based on feedback (Right)

Staff have taken on feedback, particularly with regards to the impact the trees would have on the property to the South. Staff have altered the plan to reduce the density and height of these trees which will limit the shading. Staff will also be maintaining the trees to ensure visual line of sight is maintained. This will be achieved through the removal of the lower branches.

Glenroy Reserve



- 1 submission in strong support.
- No recommended changes to plan

Fast facts - Glenroy Reserve



St Lukes Reserve

- 3 Submissions
- 2 Support
- 1 Neutral

Fast facts - St Lukes Reserve



Next Steps

If plans are approved staff will proceed with ordering trees for next planting season

Planting will be completed over a number of years by the Councils internal tree planting team

Community planting days may also be utilised to assist with re-vege planting

Community Liaison Group

CWTP Monthly Update – July 2024

Introduction

- Monthly presentation to provide an update on the operation of the Christchurch Wastewater Treatment Plant
- Includes high-level information on the operational activities being undertaken on the site

In Scope

- Operation of the interim solution
- Activities being undertaken to mitigate odours

Out of Scope

- Implementation of the findings of the Independent Review
- Current status of the insurance claim
- Status of the permanent replacement solution

Agenda

- Odour Monitoring Results
- Odour Management Action Plan Update
- Oxidation Ponds – Aerator Status
- Biological / Chemical Trials
- Long Term Plan & CWTP
- Any Questions;
 - Future topics

Odour Monitoring Results



- All data is continued to be provided on the CCC [webpage](#) from the four monitoring locations at the community sites

Christchurch City Council

Log in

Home > ... > Christchurch wastewater treatment plant > Wastewater treatment plant fire

Christchurch wastewater treatment plant fire

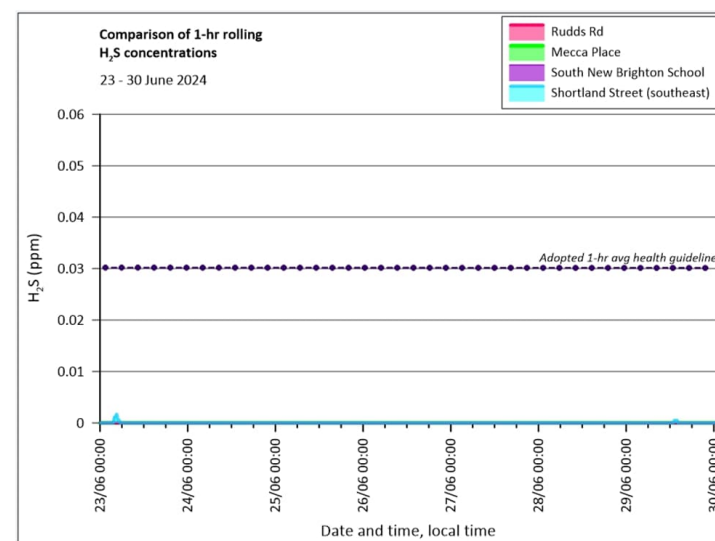
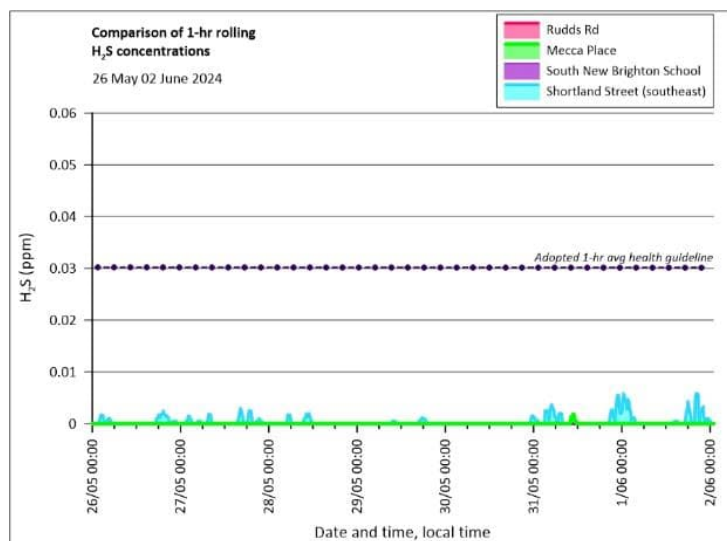
The wellbeing of our residents is our top priority.

Latest hydrogen sulphide levels

The latest monitoring results have shown that levels over the past month have been decreasing and are now well below the health guideline of 0.03ppm. At times light winds still carry odours, to nearby residential areas. [See the latest results.](#)

9 July 2024

Odour Monitoring Results



The graphs show the last week for May and June

ECan have advised that there has only been one complaint received regarding the CWTP odour in the past week (1st to 8th July)

9 July 2024

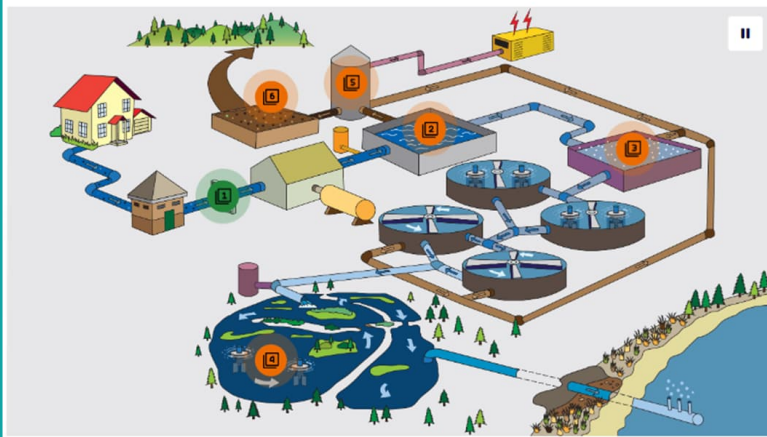
Odour Management Action Plan

Work to address odour

The interactive map below shows what we've got planned or underway to address odour at the Wastewater Treatment Plant. We'll keep this map up-to-date as our work changes.

Select a hot spot to see a description of what work is being done to address odour at different parts of the plant.

- Green: Good treatment stage process performance, the probability of odour is low.
- Orange: Average treatment stage process performance, the probability of odour is possible.
- Red: Poor treatment stage process performance, the probability of odour is high.



- [Wastewater treatment plant situation page](#) is being regularly updated

9 July 2024

Odour Management Action Plan



× 1. Inlet screen room

- A project is underway to install a new ventilation system which complies with the hydrogen sulphide safe working limits. It's estimated this work will be complete in early 2025.

× 2. Primary settlement tanks

- A project request has been made to improve the automatic water spray scum removal system. We'll be able to confirm an expected completion date for this project once the Long-Term Plan 2024-2034 is adopted on 25 June 2024.

× 6. Sludge dryer

- A project for an extensive maintenance overhaul of the sludge dryer will be carried out to reduce wet biosolid accumulation on site. We'll be able to confirm an expected completion date for this project once the Long-Term Plan 2024-2034 is adopted on 25 June 2024.

Council confirms plan to secure bright future for Christchurch and Banks Peninsula



27 Jun 2024

A 10 year roadmap to build on Christchurch's position as a thriving city has been finalised.

The Long Term Plan 2024-34 lays out Christchurch City Council's programme for the next decade, the services the Council will provide, the projects the Council will complete and how they will be paid for.

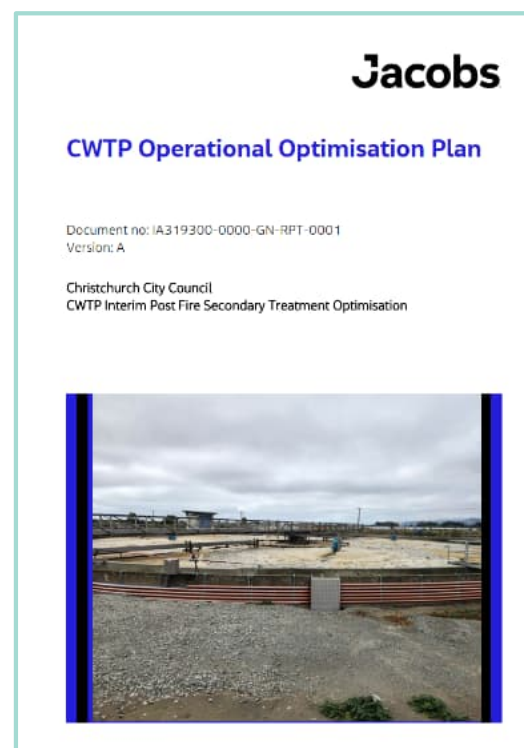
9 July 2024

Odour Management Action Plan



× 3. Temporary secondary treatment

- A first workshop between a consultant and site staff has been undertaken to review the operating parameters of the temporary activated sludge plant. New operating parameters will be implemented and trialled from 23 June 2024 - 18 November 2024.



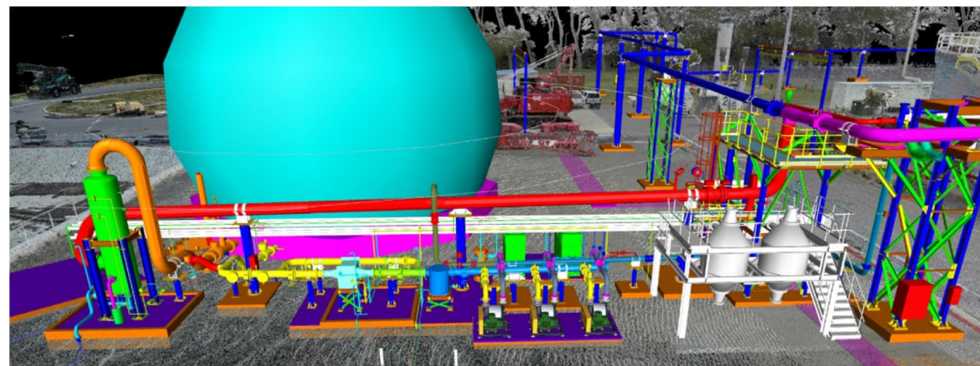
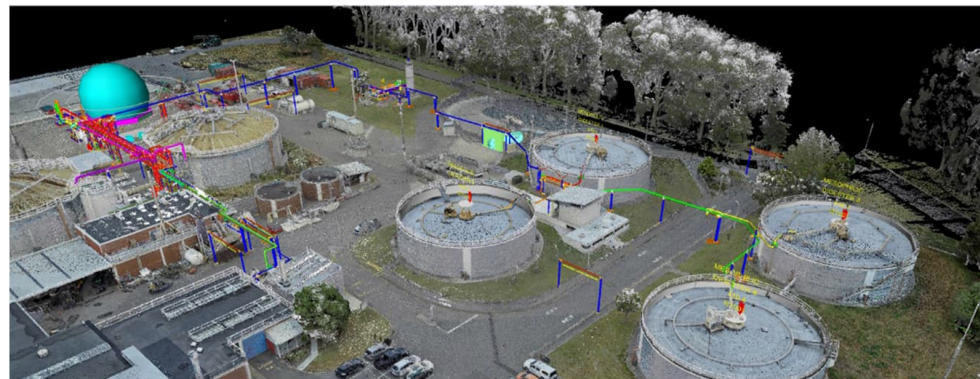
9 July 2024

Odour Management Action Plan



× 5. Digesters

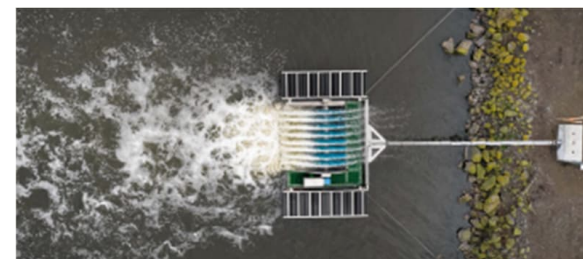
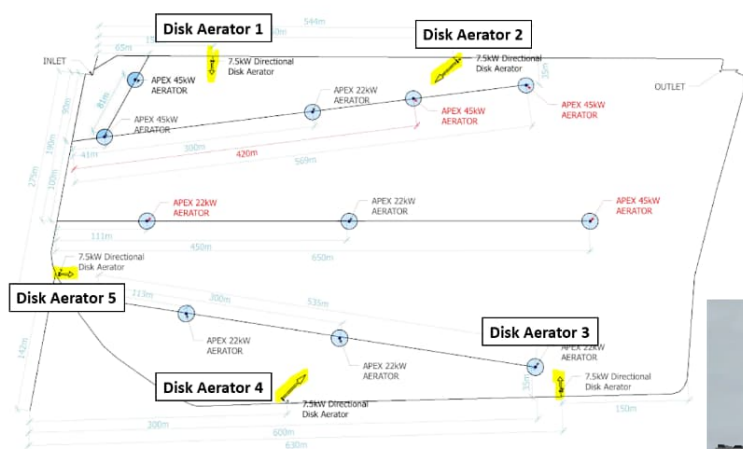
- A project is planned to upsize the pipework, aiming to reduce the emergency release of biogas. This is expected to be complete by the end of 2026.



9 July 2024

Oxidation Ponds – Aerator Status

- Contractor is continuing to have to undertake unplanned reactive maintenance on the disc aerators



9 July 2024

Oxidation Ponds – Aerator Status

- Performance Report for Disc Aerators for the past month;

Date	Disk Aerator 1 Running	Disk Aerator 2 Running	Disk Aerator 3 Running	Disk Aerator 4 Running	Disk Aerator 5 Running
7/06/2024	100.0%	100.0%	100.0%	100.0%	100.0%
8/06/2024	100.0%	100.0%	100.0%	100.0%	100.0%
9/06/2024	100.0%	100.0%	100.0%	100.0%	100.0%
10/06/2024	100.0%	100.0%	100.0%	100.0%	100.0%
11/06/2024	98.2%	100.0%	100.0%	100.0%	33.6%
12/06/2024	100.0%	100.0%	100.0%	100.0%	0.0%
13/06/2024	100.0%	100.0%	100.0%	100.0%	0.0%
14/06/2024	100.0%	100.0%	100.0%	100.0%	36.2%
15/06/2024	100.0%	100.0%	100.0%	100.0%	100.0%
16/06/2024	100.0%	100.0%	100.0%	100.0%	100.0%
17/06/2024	100.0%	100.0%	100.0%	100.0%	100.0%
18/06/2024	100.0%	38.8%	100.0%	96.9%	100.0%
19/06/2024	100.0%	0.0%	100.0%	100.0%	100.0%
20/06/2024	100.0%	0.0%	100.0%	100.0%	100.0%
21/06/2024	100.0%	43.1%	100.0%	100.0%	100.0%
22/06/2024	100.0%	100.0%	100.0%	100.0%	100.0%
23/06/2024	100.0%	100.0%	100.0%	100.0%	100.0%
24/06/2024	100.0%	100.0%	100.0%	100.0%	100.0%
25/06/2024	100.0%	100.0%	100.0%	100.0%	100.0%
26/06/2024	100.0%	100.0%	100.0%	100.0%	100.0%
27/06/2024	31.0%	100.0%	100.0%	100.0%	100.0%
28/06/2024	0.0%	100.0%	100.0%	100.0%	100.0%
29/06/2024	0.0%	100.0%	100.0%	100.0%	100.0%
30/06/2024	0.0%	100.0%	100.0%	100.0%	100.0%
1/07/2024	0.0%	100.0%	100.0%	37.8%	100.0%
2/07/2024	0.0%	100.0%	100.0%	0.0%	100.0%
3/07/2024	0.0%	100.0%	100.0%	0.0%	100.0%
4/07/2024	0.0%	43.6%	100.0%	0.0%	100.0%
5/07/2024	47.5%	37.0%	100.0%	0.0%	100.0%
6/07/2024	100.0%	100.0%	100.0%	0.0%	100.0%

9 July 2024

Biological / Chemical Trials



(Image taken from one of the trial's suppliers' public websites)

- Suppliers have provided all the information necessary to start the trial
- A location onsite at the CWTP has been chosen and laboratory sampling has been organised
- Small scale trial due to start mid-July
- The trial stages are;
 1. Confirmation of Product Information - Completed
 2. Small scale trial (nominal 20 litres) - Underway
 3. Medium scale trail (nominal 1,000 litres)
 4. Define parameters of a full-scale month-long trial (water/odour sampling, risks, dosing parameters, costs)

Long Term Plan & CWTP

Proposed Capital Programme Detail By Activity															(\$'000)
Group of Activities	Activity	Category	ID	Project Title	Proposed 2024/25	Proposed 2025/26	Proposed 2026/27	Forecast 2027/28	Forecast 2028/29	Forecast 2029/30	Forecast 2030/31	Forecast 2031/32	Forecast 2032/33	Forecast 2033/34	Total
Transport	Transport Safety														
Transport Total					150,503	156,624	153,254	153,501	167,813	162,403	168,059	164,950	159,799	181,777	1,618,684
Wastewater															
WW Collection, Treatment & Disposal															
Improve the Level of Service															
	1376	Programme - WW New Reticulation Odour Control			-	-	434	1,083	1,109	1,134	1,159	1,183	1,206	1,231	8,538
	2214	WW Duvauchelle Treatment and Disposal Renewal			1,000	1,034	5,712	5,253	5,013	-	-	-	-	-	18,013
	30172	WW Riccarton Interceptor (Upper Riccarton)			5,500	5,056	2,670	-	-	-	-	-	-	-	13,226
	42154	WW Selwyn Pump Station (PS0152), Pressure Main and Sewer			494	5,049	5,289	10,832	12,874	5,668	5,793	5,914	-	-	51,912
	42155	Programme - WW Overflow Reduction			-	620	529	1,083	1,109	567	-	-	-	-	3,908
	42603	WW Vacuum System Monitoring Equipment			5	-	-	-	-	-	-	-	-	-	5
	43946	WW Tilford Street Pump Station & Pressure Main Capacity Renewal (PS13)			538	883	-	-	-	-	-	-	-	-	1,421
	45289	WW Bamford St Odour Treatment			600	-	-	-	-	-	-	-	-	-	600
	47124	CWTP Biogas Engine Upgrade (Generator 1)			-	-	5,989	358	-	-	-	-	-	-	6,347
	47951	WW Deans Avenue to Old Blenheim Road Corridor Odour Treatment			250	-	-	-	-	-	-	-	-	-	250
	48083	WW St Asaph St Odour Treatment			222	83	-	-	-	-	-	-	-	-	305
	48308	WW Head to Wiggins Odour Treatment (Sumner)			-	-	212	-	-	-	-	-	-	-	212
	57642	WW Southern Relief Easement			248	195	-	-	-	-	-	-	-	-	443
	58434	WW Smart Overflow Reduction			75	75	75	75	75	-	-	-	-	-	375
	596	WW Akaroa Reclaimed Water Treatment & Reuse Scheme			3,106	8,272	26,609	26,586	14,158	14,793	-	-	-	-	93,524
	60260	CWTP Biosolids Holding Tank			20	47	-	-	-	-	-	1,774	4,187	-	6,029
	60303	WW Pressure Sewer System Monitoring & Control Relocation (107	228	119	-	-	-	-	-	-	-	454
	60305	WW Pump Station Flow Meters at all Stations Stage 1			224	387	-	-	-	-	-	-	-	-	611
	60312	CWTP Wastewater Critical Electrical & Control Spares for Increased Resilience			-	-	212	217	222	-	-	-	-	-	650
	60319	CWTP Wastewater Trade Waste Reception Facility Improvements			387	-	-	-	-	-	-	-	-	-	387
	60609	WW Greenhouse Gas Emission Reduction Programme			50	103	159	-	-	-	-	-	-	-	312
	65068	WW Sparks, Awatea, Longhurst and Upgradient Catchment Pump Stations Odour Treatment (104, 123, 115)			1,067	-	-	-	-	-	-	-	-	-	1,067
	67458	WW SCADA Server Infrastructure Upgrades			26	-	-	-	-	-	-	-	-	-	26
	67459	Laboratory New Equipment			100	103	106	108	111	113	116	118	121	123	1,120
	73440	Programme - WW Treatment Model Renewal			-	-	-	-	55	-	-	-	60	-	116
	73444	CWTP Biosolids Dewatering Belt Press Upgrade			-	-	-	-	1,109	2,267	2,317	-	-	-	5,693
	73446	WW Vacuum Sewer Demand Reduction			250	517	529	542	555	-	-	-	-	-	2,392
	73993	WW Beckenham PS (PS0153) and Pressure Main			350	517	2,616	867	-	-	-	-	-	-	4,349
	74196	WW Flow Meters at all Stations Stage 2			10	396	416	-	-	-	-	-	-	-	822
	74197	WW Flow Meters at all Stations Stage 3			-	10	657	683	-	-	-	-	-	-	1,350
	74271	WW McBratneys Odour Treatment (LS2573)			140	-	-	-	-	-	-	-	-	-	140

Long Term Plan & CWTP

Proposed Capital Programme Detail By Activity

(\$'000)

Group of Activities	Activity	Category	ID	Project Title	Proposed 2024/25	Proposed 2025/26	Proposed 2026/27	Forecast 2027/28	Forecast 2028/29	Forecast 2029/30	Forecast 2030/31	Forecast 2031/32	Forecast 2032/33	Forecast 2033/34	Total
Wastewater	WW Collection	Improve	17658	WW Odour Control Media Replacement and Improvements	-	-	476	-	-	-	-	-	-	-	476
Meet Additional Demand															
			42193	WW Halswell Pump Station (Stage 2) (PS60)	1,069	-	-	-	-	-	-	-	-	-	1,069
			43216	WW Tyrone Street Pump Station Capacity Renewal (Stage 2) (PS62)	-	-	-	271	1,331	2,040	869	-	-	-	4,511
			45280	WW Highfield Wastewater Servicing - Stage 2	428	1,234	352	-	-	-	-	-	-	-	2,014
			60	Programme - WW New Mains	-	-	793	812	832	567	753	1,065	701	1,514	7,037
			61	Programme - WW New Pump Stations for Growth	-	-	-	-	-	869	1,095	59	603	1,661	4,287
			71996	WW Grassmere Wet Weather Storage Facility	3,200	11,374	11,636	4,413	-	-	-	-	-	-	30,623
			76073	WW Shirley Local Pressure Sewer System	300	517	434	-	-	-	-	-	-	-	1,251
			94	WW Subdivisions Additional Infrastructure	100	103	106	108	111	113	116	118	121	123	1,120
Replace Existing Assets															
			17865	WW Reactive Lateral Renewals	500	517	529	1,083	1,109	1,134	1,159	1,183	1,206	1,231	9,650
			17875	WW Cranford Street Pump Station Renewal (PS0058)	656	-	-	-	-	-	-	-	-	-	656
			17876	WW Locarno Street Pump Station Renewal (PS0020)	-	-	-	-	-	-	-	-	-	-	-
			17881	CWTP Treatment Plant Asset Reactive Renewals	600	620	635	650	665	680	695	710	724	738	6,718
			2318	CWTP WW Health and Safety Renewals	25	26	26	27	28	28	29	-	-	-	189
			2343	CWTP Roading Renewals	160	-	-	-	-	-	-	-	-	-	160
			2375	WW Pump Station Equipment Reactive Renewals (MEICA)	300	310	317	325	333	340	348	355	362	369	3,359
			3116	Programme - WW Pump & Storage Civil & Structures Renewals	-	-	159	542	555	-	-	-	-	-	1,255
			35	Programme - WW Reticulation Renewals	556	848	572	9,728	29,947	32,873	33,597	44,948	50,673	41,841	245,582
			37	Laboratory Renewals	-	54	159	108	111	111	114	118	121	123	1,018
			37839	Programme - WW Treatment Plant Instrumentation, Control & Automation Renewals (ICA)	-	52	159	650	721	850	869	-	-	246	3,546
			37840	Programme - WW Treatment Plant Health & Safety Renewals	-	-	48	49	50	51	52	53	54	55	412
			37841	Programme - WW Treatment Plant Civil Structures & Buildings	-	52	317	477	555	759	834	964	1,044	1,188	6,189
			41393	Programme - WW Treatment Plant Mechanical Renewals	460	587	1,643	2,094	752	907	927	946	965	984	10,265
			41872	Programme - WW Control Software Renewals (SCADA)	-	66	87	100	104	100	102	175	186	201	1,120
			41876	Programme - WW Pump & Storage Mechanical Renewals	-	-	106	108	111	113	116	710	724	916	2,903
			41878	Programme - WW Local Pressure Sewer Systems Reactive Renewals	150	155	159	217	222	227	232	237	241	246	2,085
			41879	Programme - WW Health & Safety Renewals	50	52	53	54	55	57	58	59	60	123	621
			47123	CWTP Biogas Storage Upgrade	5,158	9,189	130	-	-	-	-	-	-	-	14,477
			48906	WW Health & Safety Renewals	10	10	30	42	163	155	159	-	-	-	569
			50873	CWTP Wastewater Ponds Midge Control	300	310	317	325	-	-	-	-	-	-	1,252
			56307	WW Update Model Base Data	271	278	330	357	365	348	347	469	500	500	3,765

× 1. Inlet screen room

- A project is underway to install a new ventilation system which complies with the hydrogen sulphide safe working limits. It's estimated this work will be complete in early 2025.

× 5. Digesters

- A project is planned to upsize the pipework, aiming to reduce the emergency release of biogas. This is expected to be complete by the end of 2026.

9 July 2024

Long Term Plan & CWTP

×

1. Inlet screen room

- A project is underway to install a new ventilation system which complies with the hydrogen sulphide safe working limits. It's estimated this work will be complete in early 2025.

Project Brief ?

#17881 CWTP Treatment Plant Asset Reactive Renewals

Project Details

Project Title

CWTP Treatment Plant Asset Reactive Renewals

Description and Objectives

Civil, Mechanical, Electrical, Instrumentation and Control Assets reactive renewals requirements for Christchurch WWTPs. Budgets based on historical expenditure.

Risks, Assumptions, Dependencies and Constraints

Risks, assumptions, dependencies and constraints in relation to this project. This is essential to ensuring early risk mitigation on the project. (max 2k characters)

People

Executive Sponsor

Mary Richardson

Project Manager

Patrick Cantillon

Head of Department

Brent Smith

Capital Advisor

Paula Adams

Resourcing Technical Lead

Select...

Project Sponsor

Grant Stowell

Operations Manager / Business Owner

Adam Twose

Manager Planning and Delivery

Gavin Hutchison

Delivery or Planning Lead

Grant Stowell

Initiated By (Scoped by)

Don Gracia

9 July 2024

Long Term Plan & CWTP

×

1. Inlet screen room

- A project is underway to install a new ventilation system which complies with the hydrogen sulphide safe working limits. It's estimated this work will be complete in early 2025.

Project Brief ?

#2318 CWTP WW Health and Safety Renewals

Project Details

Project Title

CWTP WW Health and Safety Renewals

Description and Objectives

A programme of capital work to allow for renewals of small general health and safety items such as handrails, confined spaces, and lighting.

Risks, Assumptions, Dependencies and Constraints

Risks, assumptions, dependencies and constraints in relation to this project. This is essential to ensuring early risk mitigation on the project. (max 2k characters)

People

Executive Sponsor

Mary Richardson

Project Manager

Patrick Cantillon

Head of Department

Brent Smith

Capital Advisor

Paula Adams

Resourcing Technical Lead

Select...

Project Sponsor

Grant Stowell

Operations Manager / Business Owner

Select...

Manager Planning and Delivery

Gavin Hutchison

Delivery or Planning Lead

Rod Whearty

Initiated By (Scooped by)

Tim Scott

Long Term Plan & CWTP

× 5. Digesters

- A project is planned to upsize the pipework, aiming to reduce the emergency release of biogas. This is expected to be complete by the end of 2026.

Project Brief ⓘ
#47123 CWTP Biogas Storage Upgrade

Project Details

Project Title

CWTP Biogas Storage Upgrade

Description and Objectives

Supply & install a double membrane gas holder bag, renew digester 1-6 controls, renew roof digesters 5 & 6

Risks, Assumptions, Dependencies and Constraints

Consenting, Explosive gas storage increase

People

Executive Sponsor

Mary Richardson

Project Manager

Patrick Cantillon

Head of Department

Brent Smith

Capital Advisor

Paula Adams

Resourcing Technical Lead

Select...

Project Sponsor

Grant Stowell

Operations Manager / Business Owner

Adam Twose

Manager Planning and Delivery

Gavin Hutchison

Delivery or Planning Lead

Rod Whearty

Initiated By (Scoped by)

Adam Twose

9 July 2024

Christchurch
City Council

Attachment A Item 8

Page 32

Long Term Plan & CWTP

Proposed Capital Programme Detail By Activity

(\$'000)

Group of Activities	Activity	Category	ID	Project Title	Proposed 2024/25	Proposed 2025/26	Proposed 2026/27	Forecast 2027/28	Forecast 2028/29	Forecast 2029/30	Forecast 2030/31	Forecast 2031/32	Forecast 2032/33	Forecast 2033/34	Total
Wastewater	WW Collection	Replace	56684	WW Reactive Mains Renewals & Capex Repairs	500	517	529	542	555	567	579	591	603	615	5,598
			59076	CWTP Wastewater Treatment Plant Building Three Renewal	785	-	-	-	-	-	-	-	-	-	785
			60085	Programme - WW Banks Peninsula Treatment Plant Civils & Buildings	-	155	212	217	-	-	-	177	1,508	-	2,269
			60088	Programme - WW Banks Peninsula Treatment Plant Mechanical Renewals	-	52	212	271	665	283	116	1,183	1,206	246	4,234
			60172	WW Lock Replacement Project	634	-	-	-	-	-	-	-	-	-	634
			60173	WW Pages Road Pump Station Pump Replacements (PS0001)	1,943	1,467	-	-	-	-	-	-	-	-	3,410
			60174	WW Alport Pump Station Pump Renewals (PS0015)	687	741	-	-	-	-	-	-	-	-	1,428
			60175	WW Pump Station 11 Randolph MEICA Renewals	386	-	-	-	-	-	-	-	-	-	386
			60176	WW Pump & Storage MEICA Renewals for FY2024	993	-	-	-	-	-	-	-	-	-	993
			60177	WW Harrison Street Pump Station Renewal (PS0006)	608	569	-	-	-	-	-	-	-	-	1,177
			60178	WW Stapletons Road Pump Station Renewal (PS0007)	-	147	702	737	-	-	-	-	-	-	1,586
			60179	WW Chelsea Street Pump Station Renewal (PS0009)	-	-	269	1,131	297	-	-	-	-	-	1,697
			60180	WW Smith Street Pump Station Renewal (PS0012)	-	-	-	-	-	-	-	-	-	330	330
			60181	WW Tilford Street Pump Station Renewal (PS0013)	-	-	-	-	-	-	328	1,372	358	-	2,058
			60182	WW Pump Station Upgrade (PS0021)	-	-	-	-	-	-	-	-	318	1,328	1,646
			60186	WW McCormacks Bay Road Pump Station Renewal (PS0057)	100	100	1,543	-	-	-	-	-	-	-	1,743
			60299	Programme - WW Buildings Asbestos Removal	-	-	-	-	-	-	-	-	121	123	244
			60304	WW Fyfe Road Pump Station Renewal (PS0101)	868	-	-	-	-	-	-	-	-	-	868
			60308	CWTP Wastewater Inlet Flow Monitoring at Pump Station 001	-	-	53	262	-	-	-	-	-	-	315
			60309	CWTP Wastewater Clarifier Mechanical Renewals (Clarifier 4 only)	1,278	1,366	-	-	-	-	-	-	-	-	2,644
			60310	CWTP Wastewater Digester 1-4 Roof Renewal	-	-	-	2,512	2,645	2,781	-	-	-	-	7,938
			60313	CWTP Wastewater Secondary Contact Tanks Renewal Pipework	-	-	-	-	333	2,380	1,317	-	-	-	4,030
			60316	CWTP Wastewater Pump Station A & B Pump Renewal	-	-	-	-	1,653	1,738	-	-	-	-	3,391
			60317	CWTP Wastewater Odour Control Renewal & Enhancements	-	-	317	3,455	-	-	-	-	-	-	3,773
			60321	CWTP Wastewater Toe Drain Reprofiting	-	-	-	1,163	2,348	-	-	-	-	-	3,511
			60322	CWTP Wastewater Sludge Dryer 1 & 2 Renewal	215	2,540	-	-	-	-	-	-	-	-	2,755
			60323	CWTP Wastewater Solids Contact Tanks Air Distribution Pipe Renewal	-	285	2,090	-	-	-	-	-	-	-	2,375
			60385	WW Mains Renewal - Multi-Use Arena - Barbadoes, Madras, Lichfield, Tuam	1,416	1,907	-	-	-	-	-	-	-	-	3,323
			63	Programme - WW Pump & Storage Instrumentation Control & Automation Renewals (ICA)	10	103	846	596	721	567	1,610	1,360	1,408	816	8,038
			65016	WW Wainui Seaview Lane & Warnerville Equipment Renewals	87	-	-	-	-	-	-	-	-	-	87
			65017	WW Banks Peninsula Treatment Plant Reactive Renewals	40	41	42	43	44	45	46	47	48	49	448
			65019	CWTP Waste Water Equipment Renewals 2022 (EICA)	534	400	-	-	-	-	-	-	-	-	934

× 6. Sludge dryer

- A project for an extensive maintenance overhaul of the sludge dryer will be carried out to reduce wet biosolid accumulation on site. We'll be able to confirm an expected completion date for this project once the Long-Term Plan 2024-2034 is adopted on 25 June 2024.

9 July 2024

Long Term Plan & CWTP

Project Brief ?

#60317 CWTP Wastewater Odour Control Renewal & Enhancements

Project Details

Project Title

CWTP Wastewater Odour Control Renewal & Enhancements

Description and Objectives

Replacement of CWTP odour control system as well as improvements to reduce smells emanating from plant.

Risks, Assumptions, Dependencies and Constraints

Risks, assumptions, dependencies and constraints in relation to this project. This is essential to ensuring early risk mitigation on the project. (max 2k characters)

People

Executive Sponsor

Mary Richardson

Project Sponsor

Grant Stowell

Project Manager

Andy Small

Operations Manager / Business Owner

Adam Twose

Head of Department

Brent Smith

Manager Planning and Delivery

Gavin Hutchison

Capital Advisor

Paula Adams

Delivery or Planning Lead

Grant Stowell

Resourcing Technical Lead

Select...

Initiated By (Scoped by)

Adam Twose

Long Term Plan & CWTP

6. Sludge dryer

- A project for an extensive maintenance overhaul of the sludge dryer will be carried out to reduce wet biosolid accumulation on site. We'll be able to confirm an expected completion date for this project once the Long-Term Plan 2024-2034 is adopted on 25 June 2024.

Project Brief ?

#60322 CWTP Wastewater Sludge Dryer 1 & 2 Renewal

Project Details

Project Title

CWTP Wastewater Sludge Dryer 1 & 2 Renewal

Description and Objectives

CWTP Sludge drier 1 and 2 facility major upgrade and renewal to maintain levels of service and operational efficiency.

Risks, Assumptions, Dependencies and Constraints

Risks, assumptions, dependencies and constraints in relation to this project. This is essential to ensuring early risk mitigation on the project. (max 2k characters)

People

Executive Sponsor

Mary Richardson

Project Manager

Miguel Santana Gallego

Head of Department

Brent Smith

Capital Advisor

Paula Adams

Resourcing Technical Lead

Select...

Project Sponsor

Grant Stowell

Operations Manager / Business Owner

Adam Twose

Manager Planning and Delivery

Gavin Hutchison

Delivery or Planning Lead

Grant Stowell

Initiated By (Scoped by)

Adam Twose

9 July 2024

Long Term Plan & CWTP

Proposed Capital Programme Detail By Activity

(\$'000)

Group of Activities	Activity	Category	ID	Project Title	Proposed 2024/25	Proposed 2025/26	Proposed 2026/27	Forecast 2027/28	Forecast 2028/29	Forecast 2029/30	Forecast 2030/31	Forecast 2031/32	Forecast 2032/33	Forecast 2033/34	Total
Wastewater	WW Collection/Replacement	Renewals	65020	CWTP Waste Water Equipment Renewals 2023 (EICA)	742	590	-	-	-	-	-	-	-	-	1,332
			65021	CWTP Waste Water Equipment Renewals MLC-E HV, System Platform (EICA)	1,353	135	-	-	-	-	-	-	-	-	1,487
			65107	WW Banks Peninsula Pumping & Storage Reactive Renewals	100	103	106	108	111	113	116	118	121	123	1,120
			65108	WW Banks Peninsula Pumping & Storage Equipment Renewals 2023 (MEICA)	120	-	-	-	-	-	-	-	-	-	120
			65109	Akaroa Wastewater Treatment Plant Electrical and SCADA Upgrade	150	-	-	-	-	-	-	-	-	-	150
			65110	WW Banks Peninsula Pumping & Storage Equipment Renewals 2025 (MEICA)	290	155	-	-	-	-	-	-	-	-	445
			65129	WW Bradford, Norwood, Hunter, Malcolm, Young, Woodbridge, Penrith, Cardiff et al Mains Renewals	2,803	-	-	-	-	-	-	-	-	-	2,803
			65133	WW Picton, Nelson, Elizabeth, Lyndon, Mandeville, Kipax, Kyle, Peverel, Burdale, Seto Mains Renewals	1,800	1,738	-	-	-	-	-	-	-	-	3,538
			65134	WW Gloucester, Worcester, Hereford, Trent, Nursery, Dearsley & Raglan Mains Renewals	2,330	-	-	-	-	-	-	-	-	-	2,330
			67457	WW Banks Peninsula Treatment Plant Renewals	200	300	-	-	-	-	-	-	-	-	500
			67806	CWTP Renewals & Replacements	4,000	36,190	48,658	27,079	-	-	-	-	-	-	115,927
			69465	WW Sandy Ave reticulation renewal	64	-	-	-	-	-	-	-	-	-	64
			69533	WW Langdons Rd Mains Renewal	3,840	1,352	1,211	-	-	-	-	-	-	-	6,403
			70580	WW Pacific Road Mains Renewal	736	878	-	-	-	-	-	-	-	-	1,614
			70633	WW Fitzgerald Ave Brick Barrel Mains Renewal	250	380	12,505	7,701	-	-	-	-	-	-	20,836
			70853	WW Buchanans Road Mains Renewal	2,750	4,198	1,300	-	-	-	-	-	-	-	8,248
			71128	WW Brougham Street Mains Renewals (NZTA)	2,400	5,170	6,225	-	-	-	-	-	-	-	13,795
			71129	WW Lyttleton Package Mains Renewals	500	1,623	-	-	-	-	-	-	-	-	2,123
			71281	WW Meadows Street Mains Renewal	347	420	-	-	-	-	-	-	-	-	767
			72038	WW - Matsons Aorangi Pipe Renewal	5	98	1,634	-	-	-	-	-	-	-	1,738
			73441	WW Pressure Main Realignment - Pages Road (PM37)	847	2,414	1,278	-	-	-	-	-	-	-	4,539
			74158	WW Ten Pump Station MEICA renewals	-	10	550	764	1,371	-	-	-	-	-	2,696
			74207	WW Network System Platform and Pump Station Starter/Software Upgrades	10	518	754	1,326	-	-	-	-	-	-	2,608
			74214	CWTP MLC-H 11kV RMU Renewal, Pond Radio's Upgrade	20	553	623	1,239	-	-	-	-	-	-	2,435
			74215	CWTP Electrical Renewals 2026	-	21	617	827	1,517	-	-	-	-	-	2,982
			74217	WW Banks Peninsula Treatment Plant MEICA 25	10	261	277	-	-	-	-	-	-	-	548
			74218	WW Banks Peninsula Treatment Plant MEICA 26	-	10	185	201	-	-	-	-	-	-	397
			74221	WW Banks Peninsula Starters & Instrumentation MEICA 2025	10	138	152	-	-	-	-	-	-	-	301
			74222	WW Banks Peninsula Pumping & Storage MEICA 2026	-	10	135	149	-	-	-	-	-	-	295
			74352	WW Lincoln Road Mains Renewal	100	517	1,804	2,600	-	-	-	-	-	-	5,020
			74584	WW Anzac Drive Renewal	3,036	-	-	-	-	-	-	-	-	-	3,036
			74865	WW Reactive Wastewater Reticulation Renewals (Maintenance Contract)	650	672	688	812	832	850	869	887	905	923	8,088
			74866	WW Reactive Wastewater Pumping Renewals (Maintenance Contract)	50	52	53	54	55	57	58	59	60	62	560

9 July 2024

Long Term Plan & CWTP

Proposed Capital Programme Detail By Activity

(\$000)

Group of Activities	Activity	Category	ID	Project Title	Proposed 2024/25	Proposed 2025/26	Proposed 2026/27	Forecast 2027/28	Forecast 2028/29	Forecast 2029/30	Forecast 2030/31	Forecast 2031/32	Forecast 2032/33	Forecast 2033/34	Total	
Wastewater	WW Collection/Replacement	E	74937	CWTP Wastewater Pond transfer structure renewal	300	310	317	325	333	340	348	1,922	1,961	2,000	8,155	
			74938	CWTP Wastewater Pump Station A & B Concrete channels renewals	-	-	-	-	-	-	290	296	302	308	1,195	
			74939	CWTP Wastewater Thermophilic digesters overhaul.	250	2,068	2,116	812	-	-	-	-	-	-	-	5,246
			74940	CWTP Wastewater Clarifiers structures overhaul	-	-	-	-	-	-	1,159	1,183	1,206	6,153	9,701	
			74941	CWTP Wastewater Thermophilic and Mesophilic air blowers renewals	-	-	-	-	-	-	579	2,188	2,232	2,277	7,276	
			74942	CWTP Wastewater Renewal of Thermophilic heat exchangers	-	-	-	-	-	170	2,027	2,070	483	-	4,750	
			74943	CWTP Wastewater Gravity belt thickeners (GBT) renewals	-	-	-	162	665	283	116	355	362	369	2,313	
			74944	CWTP Wastewater Grit bin renewal	-	52	159	2,166	333	283	290	296	302	-	3,880	
			74945	CWTP Wastewater Primary Sedimentation Tank (PST) flight and chains renewals	300	310	317	325	333	340	348	-	-	-	2,273	
			74984	CWTP Wastewater Ocean Outfall Pump Station (OOPS) preventive renewals	-	-	-	-	-	170	1,981	745	-	-	2,896	
			74993	WW Banks Peninsula Replacement of Lyttelton Naval Point WW Pump Stations	500	776	106	-	-	-	-	-	-	-	1,381	
			75713	WW Springs Road Pressure Main Renewal PM67	1,520	424	-	-	-	-	-	-	-	-	1,944	
			75891	WW Reactive Wastewater Pumping Renewals (Ops)	100	103	106	162	166	170	174	177	181	185	1,525	
			75892	WW Reactive Low Pressure Sewer System (LPSS) Renewal (Maintenance Contract)	10	10	11	11	11	11	12	12	12	12	112	
			75893	WW Vacuum Reactive Renewal (Maintenance Contract)	100	103	106	162	166	170	174	177	181	185	1,525	
			75894	WW Low Pressure Sewer System (LPSS) Reactive Renewal (Ops)	50	52	53	54	55	57	58	59	60	62	560	
			75895	WW Vacuum Reactive Renewal (Ops)	50	52	53	54	55	57	58	59	60	62	560	
			75896	WW Reactive Wastewater Reticulation Renewals (Ops)	50	52	53	54	55	57	58	59	60	62	560	
			76042	WW Colombo St Ferry Rd Linwood Ave Waltham Rd Renewals	910	1,872	1,788	-	-	-	-	-	-	-	4,569	
			76206	WW Hawthorne Lansbury Walnut Renewals	250	620	1,058	706	-	-	-	-	-	-	2,635	
			76593	CWTP Combined Heat and Power Engine Renewal (CHP2, CHP)	40	917	7	-	-	-	-	-	-	-	964	
			76770	WW Wainui Peverel Matipo George Renewals	250	620	1,058	1,251	-	-	-	-	-	-	3,175	
			899	CWTP Step Screen Renewal	149	-	-	-	-	-	-	-	-	-	149	
Wastewater Total					74,486	127,170	164,777	130,263	89,832	78,356	64,560	76,612	78,823	79,619	964,495	

× 2. Primary settlement tanks

- A project request has been made to improve the automatic water spray scum removal system. We'll be able to confirm an expected completion date for this project once the Long-Term Plan 2024-2034 is adopted on 25 June 2024.

× 1. Inlet screen room

- A project is underway to install a new ventilation system which complies with the hydrogen sulphide safe working limits. It's estimated this work will be complete in early 2025.

Long Term Plan & CWTP

- × 2. Primary settlement tanks
- A project request has been made to improve the automatic water spray scum removal system. We'll be able to confirm an expected completion date for this project once the Long-Term Plan 2024-2034 is adopted on 25 June 2024.

Project Brief ?

#74945 CWTP Wastewater Primary Sedimentation Tank (PST) flight and chains renewals

Project Details

Project Title

CWTP Wastewater Primary Sedimentation Tank (PST) flight and chains renewals

Description and Objectives

Take one PST out of service per year. Replacement of flight and chains and complete assessment of concrete structures.

Risks, Assumptions, Dependencies and Constraints

1 PST out of service per year

People

Executive Sponsor

Brent Smith

Project Sponsor

Grant Stowell

Project Manager

Miguel Santana Gallego

Operations Manager / Business Owner

Adam Twose

Head of Department

Brent Smith

Manager Planning and Delivery

Gavin Hutchison

Capital Advisor

Paula Adams

Delivery or Planning Lead

Grant Stowell

Resourcing Technical Lead

Miguel Santana Gallego

Initiated By (Scoped by)

Miguel Santana Gallego

9 July 2024

Long Term Plan & CWTP

× 1. Inlet screen room

- A project is underway to install a new ventilation system which complies with the hydrogen sulphide safe working limits. It's estimated this work will be complete in early 2025.

Project Brief ?
#899 CWTP Step Screen Renewal

Project Details

Project Title

CWTP Step Screen Renewal

Description and Objectives

Renewal of step screen at Wastewater Treatment Plant.

Risks, Assumptions, Dependencies and Constraints

Risks, assumptions, dependencies and constraints in relation to this project. This is essential to ensuring early risk mitigation on the project. (max 2k characters)

People

Executive Sponsor

Mary Richardson

Project Manager

Patrick Cantillon

Head of Department

Brent Smith

Capital Advisor

Paula Adams

Resourcing Technical Lead

Select...

Project Sponsor

Grant Stowell

Operations Manager / Business Owner

Select...

Manager Planning and Delivery

Gavin Hutchison

Delivery or Planning Lead

Rod Whearty

Initiated By (Scoped by)

Tim Scott

9 July 2024

Questions?
Topics for next time?