

Christchurch City Council
MINUTES ATTACHMENTS

Date: Wednesday 19 June 2024
Time: 9.32 am
Venue: Council Chambers, Civic Offices,
53 Hereford Street, Christchurch

| TABLE OF CONTENTS NGĀ IHIRANGI | PAGE |
|--|-------------|
| 3.1.2. Don Gould | |
| A. Don Gould - Presentation to Council..... | 3 |
| 3.2.2. Deputations by Appointment - Avon Ōtākaro Network Inc. | |
| A. Avon Ōtākaro Network Inc -Presentation to Council | 9 |
| 10. Staff Submission: Local Government (Water Services Preliminary Arrangements) Bill | |
| A. Draft Council supplementary submission on the Local Government (Water Services Preliminary Arrangements) Bill | 17 |



- City Life Survey
Notice of Motion on Infrastructure
Ōtākaro-Avon Stormwater
Management Plan

Don Gould – 19 June 2024

City Life Survey – Climate Change

- Complaints to elected members from the public
- Asked if I had completed, which I hadn't, and if I would review it
- I reviewed it
- I reached out to others to review it
- Today I'm giving feed back on that review

The survey is not good

- It shows bias
- It attempts to direct thinking rather than gathering thought
- It is antagonistic in places
- It shows a poor attempt at social engineering
- It's way to long – if you're of "Climate Faith" then you'll love this survey, but if you're not or on the fence then you'll fatigue quickly
- It pulls the reputation of the council down in my view

Feedback from people I shared with:

- The questions asked and rated seemed like they were very misleading and tried to push the answer down the greeny path of what they wanted.
- It was very biased and repetitive.
- Tbh, there is no point my partaking in it.
- I don't think I have seen a survey with the sheer volume of biased questions as this one.
- Reading through the questions is it clear the surveyor has designed the questions to deliver a preferred outcome.
- It is disingenuous to suggest that this survey reflects the mood or wishes of the respondent.

So thanks but I'll pass!

That isn't just a polemic it's a badly crafted one because you can see the emotional blackmail a mile off

- it was so leading it wasn't possible to actually respond effectively.
- Both the Question wording and response boxes were so poorly configured, I had to answer in the extreme each time just to not directly affirm their line of questioning.

Re: Reminder - We'd love your feedback!
From [redacted]
To Don Gould
Date Mon 14:35

Hi Don

Thank you for forwarding this Life in Christchurch Survey.

Tbh, there is no point my partaking in it. I don't think I have seen a survey with the sheer volume of biased questions as this one. Reading through the questions is it clear the surveyor has designed the questions to deliver a preferred outcome. It is disingenuous to suggest that this survey reflects the mood or wishes of the respondent.

So thanks but I'll pass!

Re CCC Climate change survey
From [redacted]
To Don Gould
Date Mon 20:43

Hi,

Wondering what you felt about the climate change survey?

I felt that a certain greeny was very biased with the questions.

The questions asked and rated seemed like they were very misleading and tried to push the answer down the greeny path of what they wanted.

It was very biased and repetitive.

I am a business owner so everything I possibly can to make as little impact on the environment. Even using recycled paper for my personal wrapping. I wear second hand clothes.

What more could I possibly do? I felt that this was such a poorly constructed that I may have answered some quite over and over again to me, answers.

What is to be done about this though? How can the process getting to work, avoid the survey? Having said that, I don't believe the survey is a reflection of what the surveyor really wanted.

Some there was a company that built houses in Auckland with wooden cladding, two plots, much less, and used to be a house, all etc. When are they suggesting these businesses?

The businesses that have very low carbon emissions. Why don't they stop the house of all the road from the house?

Average of the whole.

The reader should have been contacted for someone that can actually take a good look at the questions and make them a bit less offensive to me. I find the whole survey very much off and very poorly put together.

Thanks I appreciate your feedback.

[redacted]

To [redacted]
From Don Gould
Date Mon 16:56

That isn't just a polemic it's a badly crafted one because you can see the emotional blackmail a mile off
Sent from my iPhone

Re: Fwd: FW: Reminder - We'd love your feedback!
From [redacted]
To Don Gould
Date Mon 21:09

Hi Don,

I already filled this survey out earlier this week, but it was so leading it wasn't possible to respond effectively.

Both the Question wording and response boxes were so poorly configured, I had to answer in the extreme each time just to not directly affirm their line of questioning.

Thx

[redacted]

Notice of Motion – Infrastructure Delivery Working Group

- This is timely
- My recent experience with a project that has now shown issues with a couple of council policies on the table at present.
- I urge member to support this motion if for no other reason but to draw attention with staff and members to the procurement policies

Ōtākaro-Avon Stormwater Management Plan

- My main message in my written submission was to 'get on with it'.
- My message today is to listen to the engaged public
- You, as a council, spend too much time standing at an apple tree, looking up and wanting to pick every apple and starting with the ones at the top while ignoring the apples on the ground and the easy low hanging fruit
- I want you to focus on listening to and engaging with the key community who are engaged with this issue – that's actually not me
- I want you to trust that they have networks too that they represent and they will engage with the community faster and better than this council is able

Questions?



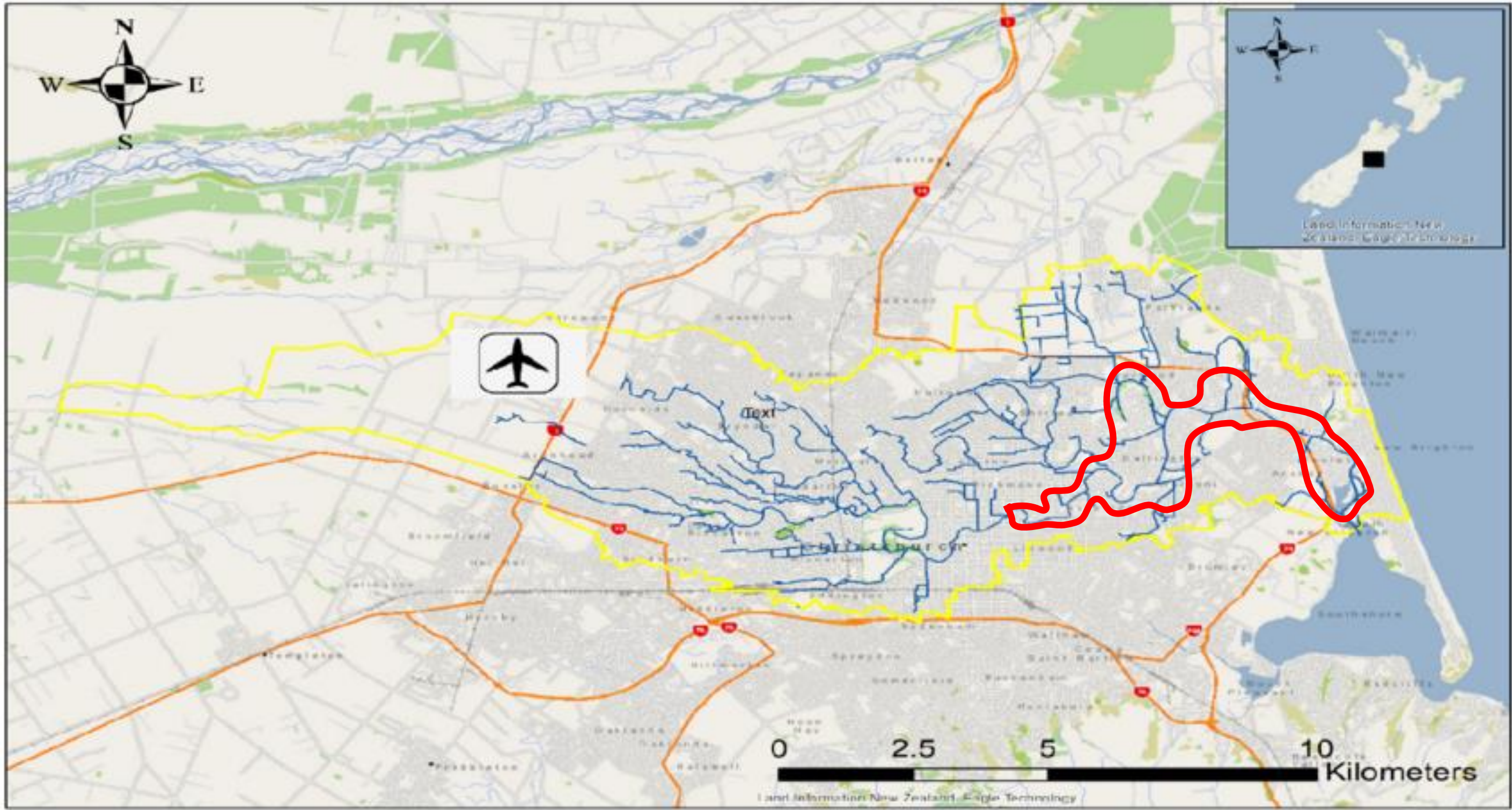


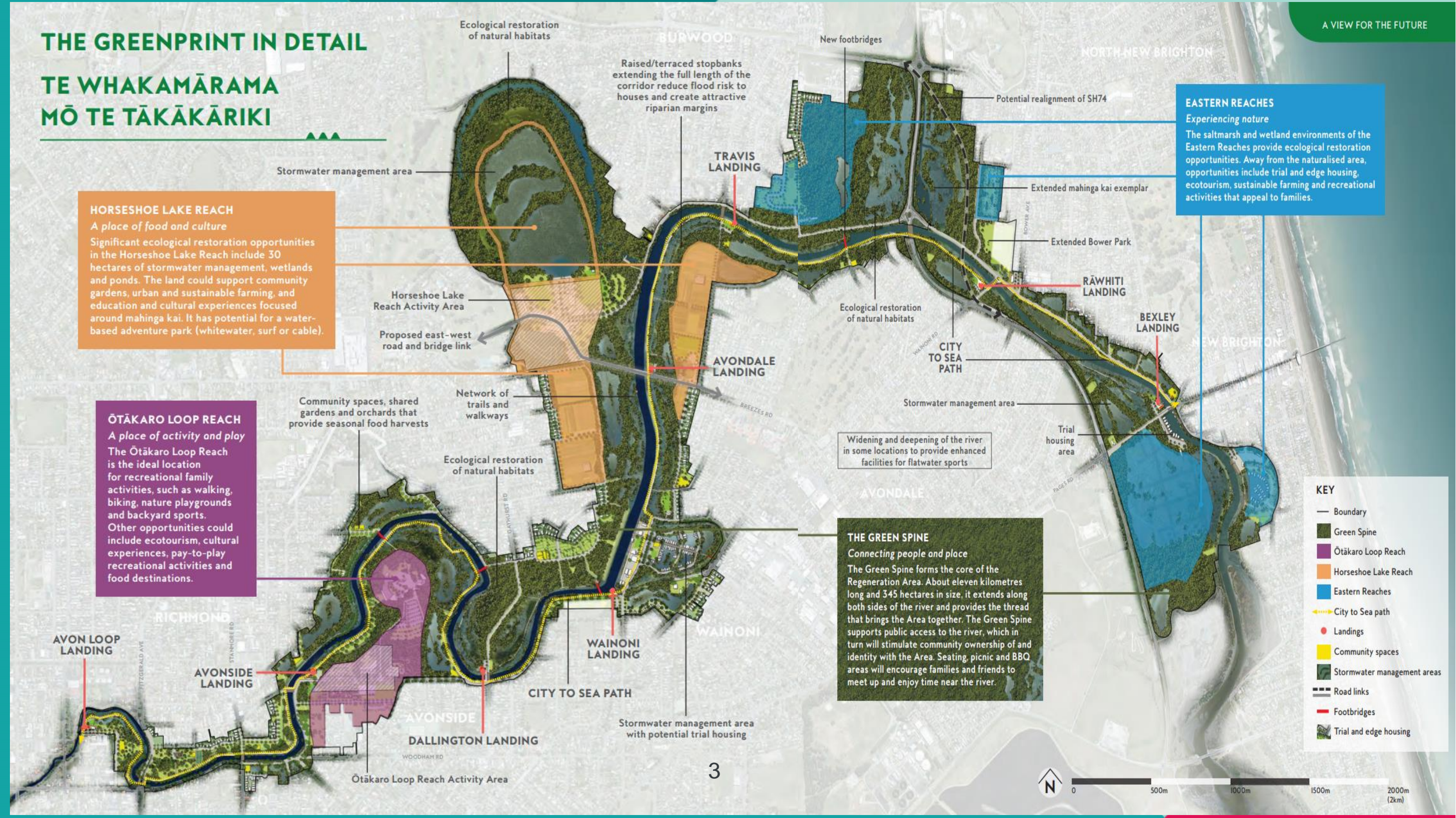
HE ITI TE MOKOROA NĀNA TE KAHIKATEA I KAKATI
(EVEN THE SMALL CAN MAKE A BIG IMPACT ON THE BIG)

ŌTĀKARO AVON RIVER

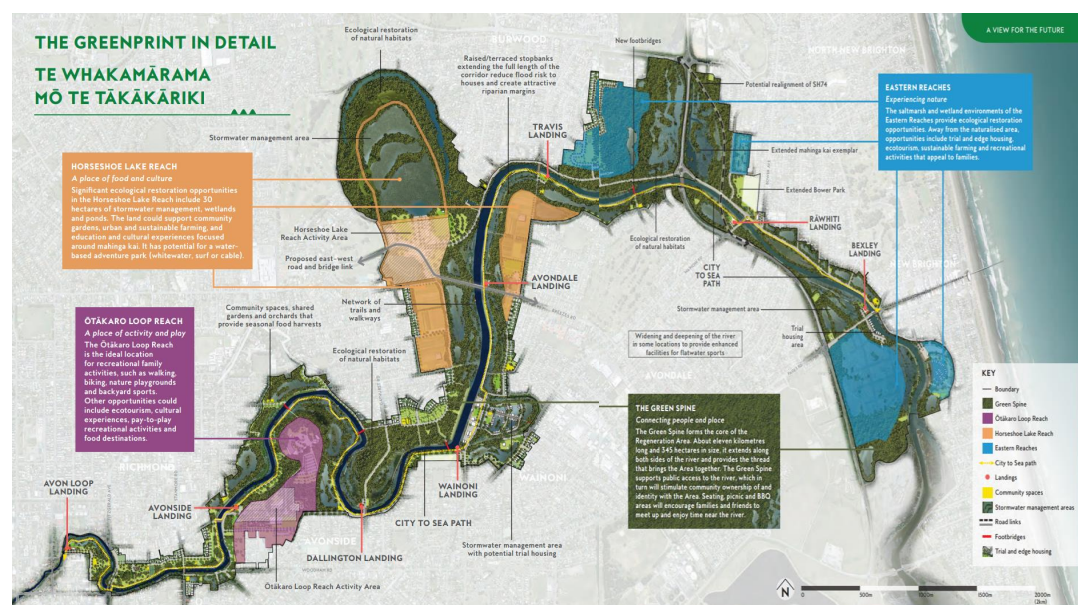
A river that traverses the heart of our city yet we
continue to treat it like a drain.







What is the current lay of the land?



Disconnect



Ōtākaro Avon Regeneration Plan

Regeneration Plan no longer has legislation
Informed District Plan
Has funding from global settlement
Requires consents from ECAN

Ōtākaro Avon River Stormwater Management Plan

Plan recently put out for consultation
Requires mostly action at source
No LTP funding for infrastructure or community action
Tick box exercise to satisfy stormwater resource consent

Rubbish
One Boom
No Socks
27 discharges
flood protection

Relies on goodwill of community
Hard to police and enforce compliance
Waste water discharge threshold is
only 2mm of rain in 24 hours
Ma hinga kai value low
Diversity of native species very low

Freshwater habitats are lost or
under serious threat from urban
contaminants
Silt levels not moving and can
smother habitat

In River Clean



12 community weigh sessions, a number of times in river since Oct 2022, 7 tonnes of rubbish, 50% diverted from landfill



OUR BIO-DIVERSITY FOCUS

01

In River Clean

Started Oct 2022;
7 tonnes so far;
12 community sorting events;
Communications strategy.

03

Supporting the Ōtākaro Trapping Project

Encourage and connect
Neighborhoods to the
project;
trap in our riparian sites.

05

Advocacy and Forums

Regular network meetups;
Submissions & engagement;
Active participation in the
Community waterways
partnership.

02

Resourcing and Educating the network

Weekly school groups;
Plant distribution and
education;
Test kit library;
Support 4 Community gardens

04

Dudley Stream Management Plan

Development of a plan from
North Parade to the
confluence to then work with
the local schools and residents
to action.

06

Events and awareness

Three key annual events;
Maps and actions to get people
out into the corridor and in
nature;
Five AvON managed planting
sites.





Water is a taonga

We are not doing enough to protect it?

Whose responsibility is it?

What can we all do to fix it?

What's your vision for the river?

How to we activate the stormwater
management plan rather than put it on a
shelf somewhere?



20 June 2024

03 941 8999

53 Hereford Street
Christchurch 8013

PO Box 73013
Christchurch 8154

ccc.govt.nz

Committee Secretariat
Finance and Expenditure Committee
Parliament Buildings
Wellington

Email: fe@parliament.govt.nz

Christchurch City Council supplementary submission on the Local Government (Water Services Preliminary Arrangements) Bill

1. Christchurch City Council (the Council) appreciates the extension granted by the Select Committee for submissions on the Local Government (Water Services Preliminary Arrangements) Bill (the Bill). This additional time has allowed us to seek feedback from our elected members and incorporate their insights into this supplementary submission.
2. The Council recognises the importance of the Bill in addressing water infrastructure challenges and ensuring the delivery of sustainable water services. However, we have identified several areas where the Bill could be improved to better align with the needs and capacities of local councils.

Key Areas of Concern and Recommendations

Consultation Timeframe

3. The initial consultation period was too short, limiting the ability of elected members and the public to engage effectively. Adequate consultation is essential for ensuring that all stakeholders, including local councils and the communities they serve, can thoroughly review the Bill's provisions and provide meaningful feedback. The compressed timeframe has restricted our capacity to engage in this critical process, potentially leading to oversight of important considerations and less informed decision-making.
4. **Recommendation:**
 - i. We recommend extending the consultation period for future related Bills to allow for comprehensive engagement and well-considered feedback. This will ensure that all stakeholders have adequate time to review and comment on the proposed legislation.

Regulatory Impact Assessment

5. The absence of a publicly accessible Regulatory Impact Assessment limits our ability to provide fully informed feedback. Without this assessment, it is challenging to understand the full

implications of the Bill and its potential impacts on various stakeholders. Transparency in the legislative process is crucial for informed decision-making and public trust.

6. Recommendation:

- i. The Council expresses concern about the absence of a publicly accessible Regulatory Impact Assessment for the Bill.
- ii. We recommend that the Select Committee ensure that this assessment is made available to all stakeholders to inform comprehensive and transparent feedback processes in the future.

Requirement for Water Delivery Entities to Improve Infrastructure

7. The Bill does not require water delivery entities to improve the state of water infrastructure over time. Without such requirements, there is a risk of continued underinvestment and deterioration of critical water infrastructure.

8. Recommendation:

- i. The Council recommends that the Bill include provisions requiring water delivery entities to improve the state of water infrastructure over time. This should include setting performance targets and benchmarks for continuous improvement to address the current backlog of infrastructure issues and ensure long-term sustainability.

Taumata Arowai and Te Mana o te Wai

9. Taumata Arowai should consider Te Mana o te Wai when setting wastewater performance standards. Without this consideration, there is a risk of inadequate environmental protections and further degradation of water quality.

10. Recommendation:

- i. The Council recommends that the Bill mandate Taumata Arowai to uphold the principles of Te Mana o te Wai in all its regulatory activities, including setting wastewater performance standards. This approach is essential to ensure the protection and restoration of our freshwater resources.

Exemption from Cost-Effectiveness Review (Section 58)

11. The Bill exempts certain entities from cost-effectiveness reviews. Robust cost-effectiveness reviews are essential for ensuring financial sustainability and public trust in water services management.

12. Recommendation:

- i. The Council recommends that the Bill include a mandatory cost-effectiveness review process to ensure robust decision-making and financial sustainability. This should align

with the principles of Section 17A reviews under the Local Government Act, providing transparency and accountability in the management of water services.

Reference to Mana Whenua

13. The Bill does not adequately recognise the role of mana whenua in water services planning and delivery. The lack of explicit recognition and provisions for mana whenua could lead to insufficient consideration of their rights, values, and knowledge in water management.

14. **Recommendation:**

- i. The Council recommends that the Bill explicitly recognise and incorporate the role of mana whenua in the planning and delivery of water services. This should include provisions for partnership arrangements that honour Te Tiriti o Waitangi and ensure mana whenua are actively involved in decision-making processes.

Limitation on Excessive Profits (Section 32)

15. The reference to limiting the ability to extract excessive profits raises concerns about potential privatisation. There is a risk that water services entities could be structured in a way that prioritises profit over public service, leading to higher costs for consumers and reduced investment in infrastructure and service quality.

16. **Recommendation:**

- i. The Council seeks clarity on the intent behind Section 32, particularly regarding the limitations on extracting excessive profits.
- ii. We recommend that the Bill explicitly state that water services entities should operate on a not-for-profit basis, ensuring that any surplus funds are reinvested into infrastructure improvements and service enhancements rather than distributed as profits.

Protections Against Privatisation

17. The Bill lacks explicit protections against the privatisation of water supply and wastewater networks. Without clear legislative protections, there is a risk that water services could be privatised, leading to potential negative impacts on affordability, accessibility, and quality.

18. **Recommendation:**

- i. The Council recommends that the Bill include explicit protections against the privatisation of water supply and wastewater networks. The strategic importance of water for our community's well-being and economic stability, means it is crucial that legislative safeguards are established to prevent privatisation and ensure public ownership and control of water resources.

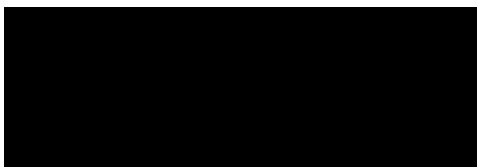
Conclusion

19. Christchurch City Council supports the overall intent of the Local Government (Water Services Preliminary Arrangements) Bill. However, we urge the government to consider our recommendations to ensure that the Bill is practical, equitable, and effective in achieving its

objectives. We are committed to working collaboratively with the government to refine and implement this important legislation for the benefit of our community and the environment.

20. For any clarification on points within this submission, please contact [Staff Contact Details].

Yours faithfully,



John Higgins
General Manager – Strategy, Planning & Regulatory Services