

Waihoru
Spreydon-Cashmere-Heathcote Community Board
MINUTES ATTACHMENTS

Date: Thursday 9 May 2024
Time: 4.07 pm
Venue: Boardroom, Beckenham Service Centre,
66 Colombo Street, Beckenham

TABLE OF CONTENTS NGĀ IHIRANGI	PAGE
4.1. Public Forum - Cashmere Stream Esplanade - park furniture	
A. Item 4.1 - Cashmere Stream Esplanade project presentation	3
B. Item 4.1 - Letter of support from Heidi Wilton	9
C. Item 4.1 - Letter of endorsement from Rebecca Warwick	12
4.4. Public Forum - Waltham Park Memorial Gates	
A. Item 4.4 - ANZAC Day Service Waltham Gates presentation	13
12. Urban Forest Tree Planting Plan for Spreydon Domain and Francis Reserve	
A. Item 12 - Urban Forest Planting Programme presentation	18
8. Briefings - Customer Service Request Reporting for the Waihoru Community Board Webpage	
A. Item 8 - Customer Service Request Reporting Presentation	27



Cashmere Stream Esplanade Reserve Project

Rotary Club of Christchurch South











Walders, Jane

From: Wilton, Heidi
Sent: Wednesday, 8 May 2024 1:23 pm
To: [REDACTED] Athol McCully; Walders, Jane
Subject: 2024 Cashmere Stream Esplanade Reserve (CSE)

Kia ora Sarah and Athol, South Rotary and Waihoru-Spreydon Community Board,

I would like to write and confirm my support for the assets South Rotary would like to contribute for Cashmere Stream Esplanade (CSE) Reserve. . The last 4 years at CSE, there have been two community volunteer groups in the reserve, helping establish native planting and underplanting (meeting 4 x annually)(shown in Photo below). South Rotary are requesting support for establishing a BBQ and Picnic Table area at CSE for the Community to utilise. The second request is for New Signage.

CSE is located on Worsleys Road in Hoonhay, South of Cashmere Road (circled in red on map below). CSE is a 5 hectare reserve with 20+ year old native restoration planting, offering passive recreation with wide open spaces. Cashmere Stream runs through the north west boundary and is a significant tributary to the Opawaho - Heathcote Awa (river). The reserve also includes a historic folly (an old butchery). CSE reserve has many conducive aspects for creating spaces that allow for communities to connect.

With the subdivision's east of Worsley's Road, residential numbers have increased in this area, and have resulted in the Worsley's Valley Drainage Reserve (Stormwater Basins), that have pathways for recreation but don't offer wide open spaces for families and groups to gather, picnic or BBQ. The Stormwater Basins are primarily for ecological restoration planting and water management, so CSE is a great resource for offering passive recreation




- The current assets at CSE are: 1 Picnic Table at CSE and 3 signs (naming the reserve). A second picnic table/BBQ area would be a great asset for the community as there are currently no outdoor BBQs within 2km of CSE. The closest BBQ is located at Cashmere Valley Reserve Playground 2km away.

- South Rotary would also like some new signage to be considered for this site offering Ecological Information about the special character and history of the site.
- I also think there is great potential in linking the two Cashmere Stream esplanade Reserves with an informal track that would meander alongside Cashmere stream. This link would allow for uninterrupted walking route from CSE through to Westmorland Reserve and the hills (indicated in map with dashed red line).
- There was a request 18mths ago, asking if I thought this area could be suitable for Disc Golf. I have not heard anything further from this enquiry, and don't know if the board has been approached about this possibility. I do think a 9 hole Disc Golf Course would suit this area and if planned well could harmoniously work alongside a new Picnic/BBQ area.

I would like to thank the South Rotary for their continued support at CSE, and also their offer to assist in this request for increasing assets for community use. I wish them all the best in this project. Please feel free to contact me for any further information needed.

Po marie,
Ngā mihi,

Heidi Wilton

Landscape Architect BLA Hons MLA
Technical Services & Design Unit
Ph 

Rostered on **Monday - Thursday**. Any queries outside these hours please contact Christchurch City Council 03 941 8999

Christchurch
City Council 



 03 941 8999







Civic Offices, 53 Hereford Street, Christchurch 8013



PO Box 73016, Christchurch 8154



ccc.govt.nz

From: Rebecca and Nick Warwick [REDACTED]
Date: 7 May 2024 at 8:42:39 AM NZST
To: sara mackenzie [REDACTED]
Subject: Re: Cashmere Stream Esplanade

Hi Sara

My son and I went back this past weekend and finished off the pile of bark everyone had been working on the previous weekend.

Plenty of support from other members of the Cracroft Residents Association for any enhancements to our community area.

Please let me know if you need anything from the association.

Regards
Rebecca
Sent from my iPhone

On 6 May 2024, at 2:46 PM, sara mackenzie
[REDACTED] wrote:

Hi Rebecca

It was great to see you again and for all your help.

We are preparing for our presentation this Thursday at 4pm. Our digital material has to be there by this Wednesday.

Have you been able to get any feedback from your community? At this stage we are just asking for permission to put a picnic table and bench set and an information board showing the native trees and plants in the area with a Rotary sign on the reverse side.

Please let me know if there's support for this.

Warm regards

Sara

Sent from my iPhone

ANZAC Day Service

For Waltham, St Martins &
Opawa communities





New Community ANZAC Day Service



9.30am

Thursday 25 April 2024

Waltham Park Memorial Gates

Cnr Waltham Road & Fifield Terrace

The names of 43 young men on the memorial from the
Waltham-St-Martins-Opawa community will be honoured.

Local schools, churches and Guides involved.

All welcome to this community service – please bring flowers –
and older people bring folding chairs.

More Information contact: Rev. Dr Richard Waugh 022 533 9400



**300+ people
attended:-**

5 local schools

Girl Guides

Brownies

Girls & Boys

Brigade

3 local churches

RSA



Thank you to Community Board



Support from Community Board & City Council now sought:

- 1. Endorsement of new community initiative for annual ANZAC service**
- 2. Closure (3 hours) of small part of Wilson's Road (easy access maintained for other roads) for crowd position and health/safety**
- 3. Access to power from Swimming Pool for sound system**
- 4. Tidying up of site and opening of memorial gates prior to service**
- 5. Listing of service on Council ANZAC day sites etc**



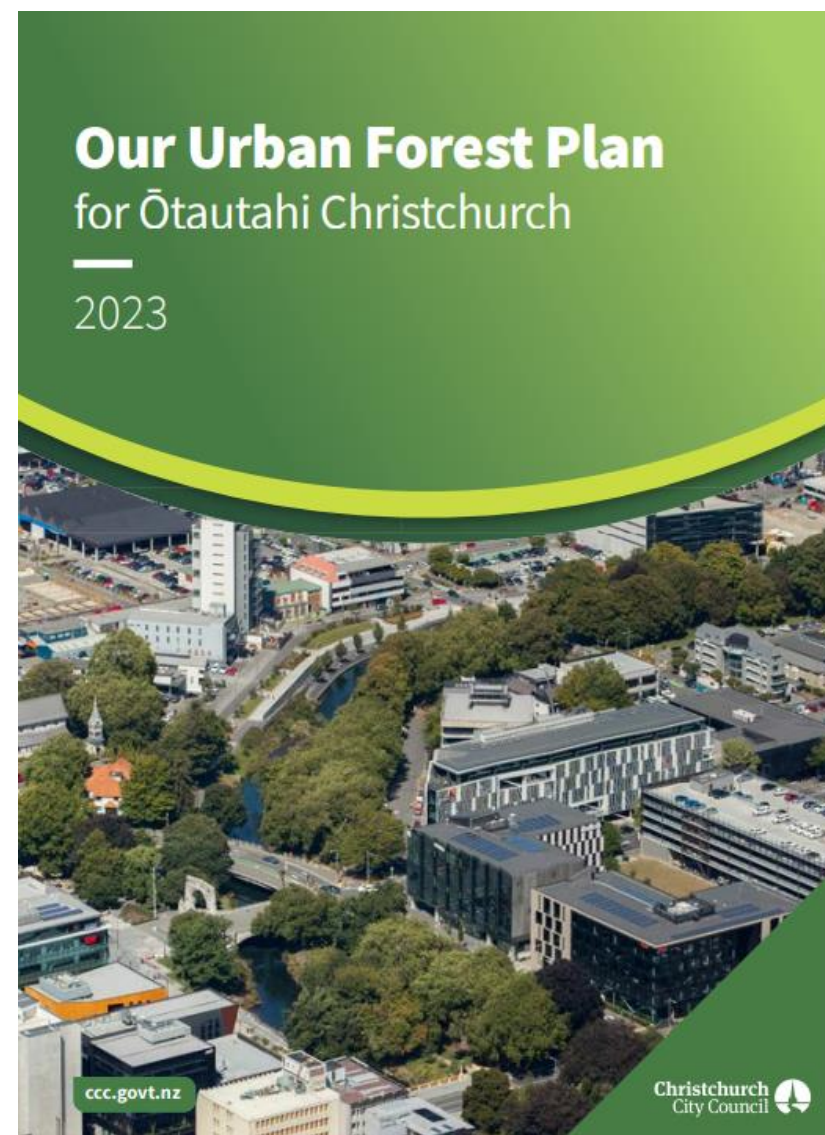


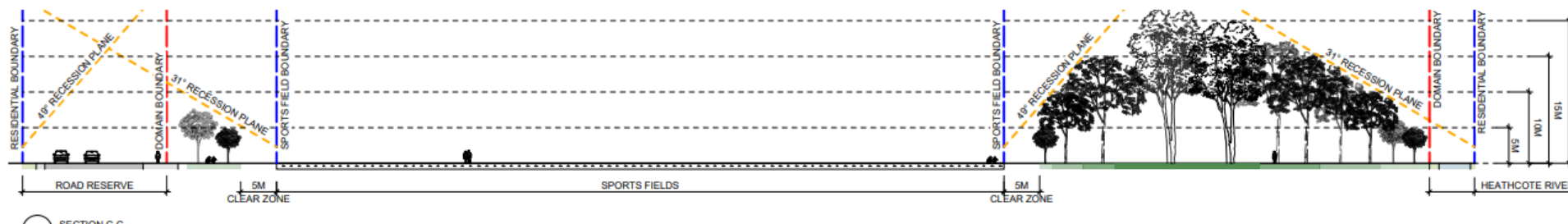
Urban
Forest Planting Program

- Sydenham Park
- Francis Reserve

The Urban Forest Planting Program

- Increase canopy cover across our city
- Focus on getting the overall canopy cover within our Parks spaces to 40%
- Increasing the visibility of indigenous species
- Planting trees in sites that are able reach maturity





Determining location of trees

Recession planes to manage shading

Off-sets from paths to avoid damage

Boundary off-sets to avoid boundary encroachments

Existing use of park

Location of underground services


Future plans for the park

Distribution of indigenous forests nearby

Location of waterways


Consultation

- Consultation started on 12 March and ran until 9th April 2024
- Spreydon Domain page had 52 views, and Francis Reserve had 129 views
- Flyers were delivered to properties neighbouring the park
- Signage was installed in the park with a QR code to the consultation webpage.

 **Newsline**






Community matters City life Environment Planning & building Arts & culture

Plans to sprout Christchurch tree canopy



15 Dec 2023

Share this story

...lling series of plans to plant more trees throughout Christchurch and Banks Peninsula have been ...sed.

... is part of the **Ōtautahi Christchurch Urban Forest Plan** which aims to increase the canopy cover across the city ... an ambitious target of 40% across our 1,200 parks over the next 50 years.

Spreydon Domain

- Proposal for see 265 new trees
- Canopy cover will increase from 20% to 27%
- Received 3 individual submissions, all 3 strongly supported or somewhat supported the planting.
- We also contacted the sports groups who use the park who requested one tree be removed from the plan
- No Changes have been recommended for this park.



Francis Reserve

- Proposal for 37 new trees + 2300m² of restoration planting
- Increase canopy from 28% to 37%
- This plan received received 6 individual submissions, 1 submitter somewhat opposed the plan but has since contacted Council to express their support.
- No changes recommended.

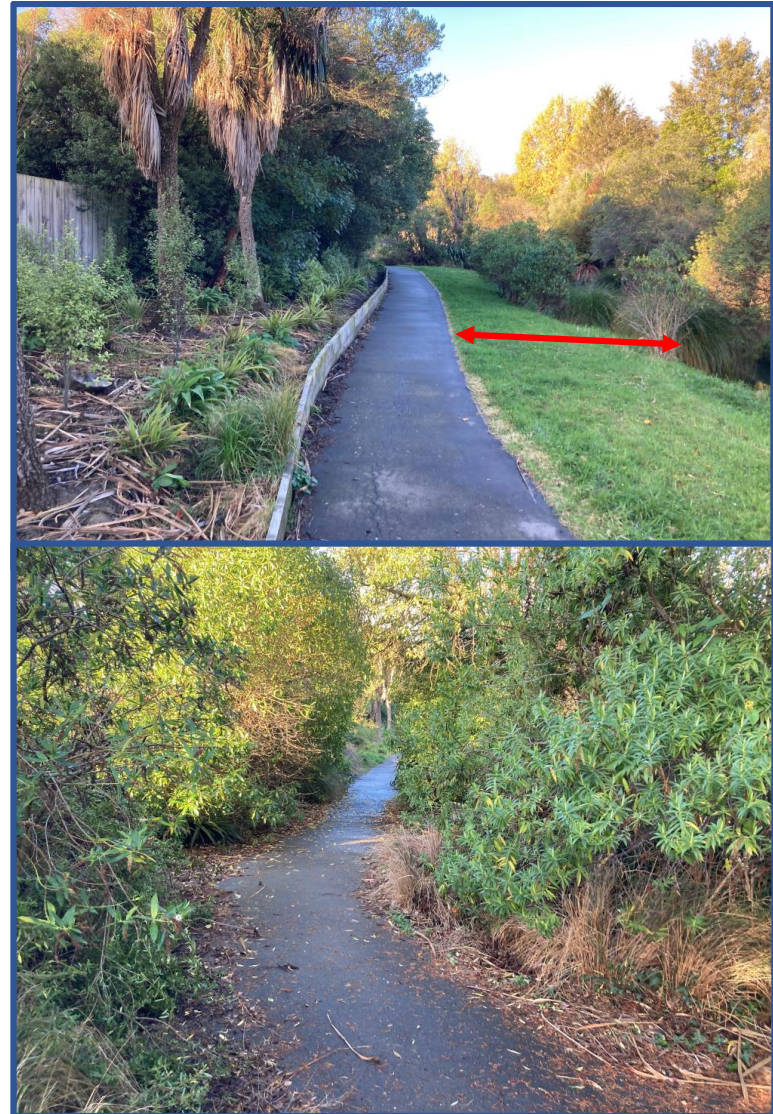


CPTED concerns

- Planting is set back 3m either side of the path
- Planting near the path will be low and graduate to taller species
- Alternative route is available



Site examples



Next Steps

If plans are approved staff will proceed with ordering trees for this planting season

Planting will be staged over 1-5 years

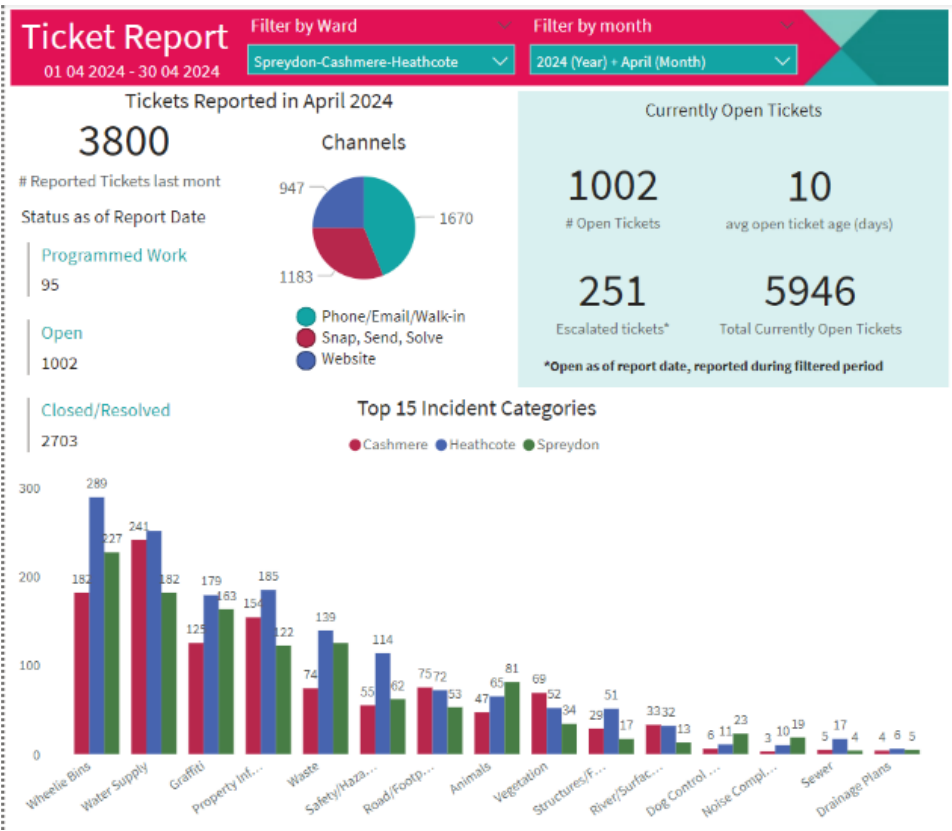
Planting will be completed by the Councils internal tree planting team

Community planting days may also be utilised to assist with planting

Community Board Briefing

Customer Reporting
May 2024

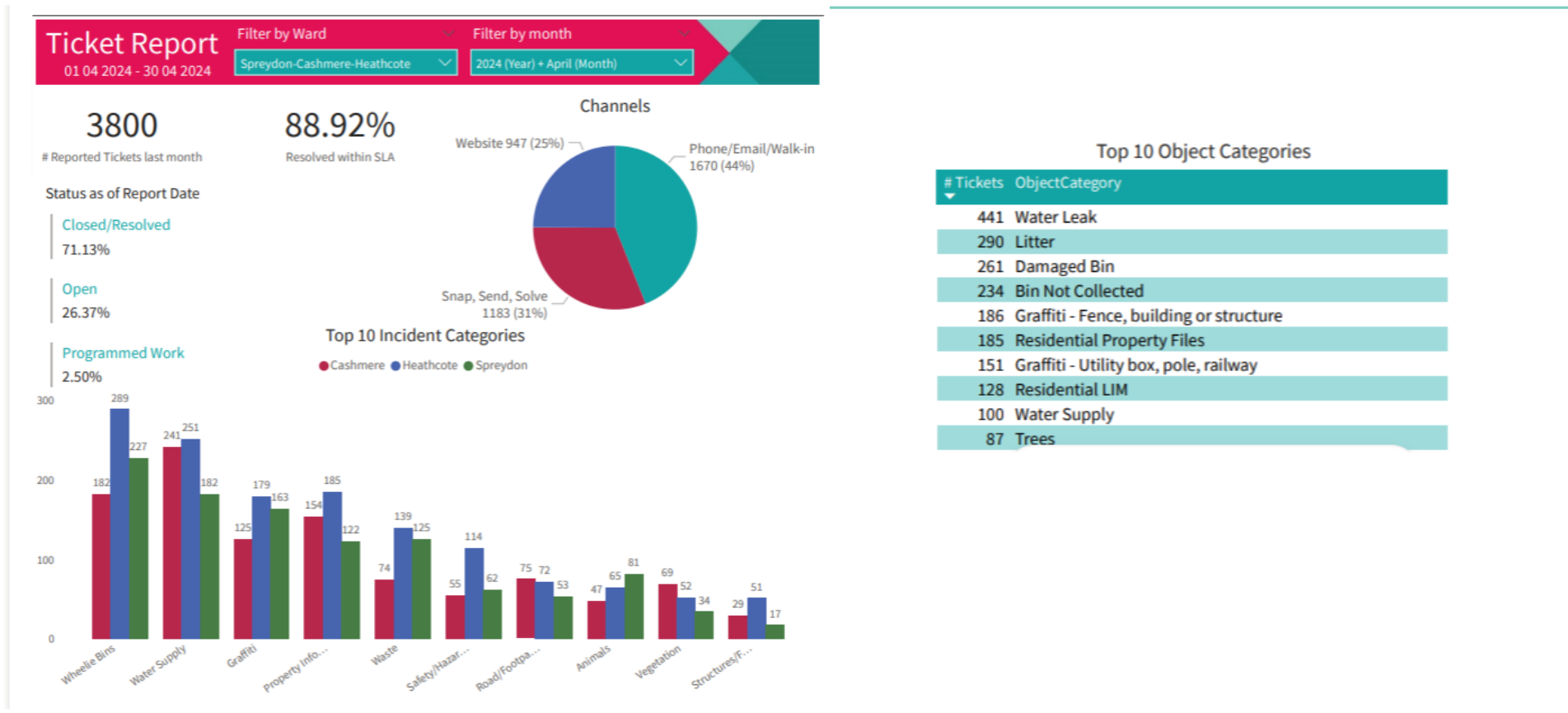
Current Reporting



Top 10 Object Categories

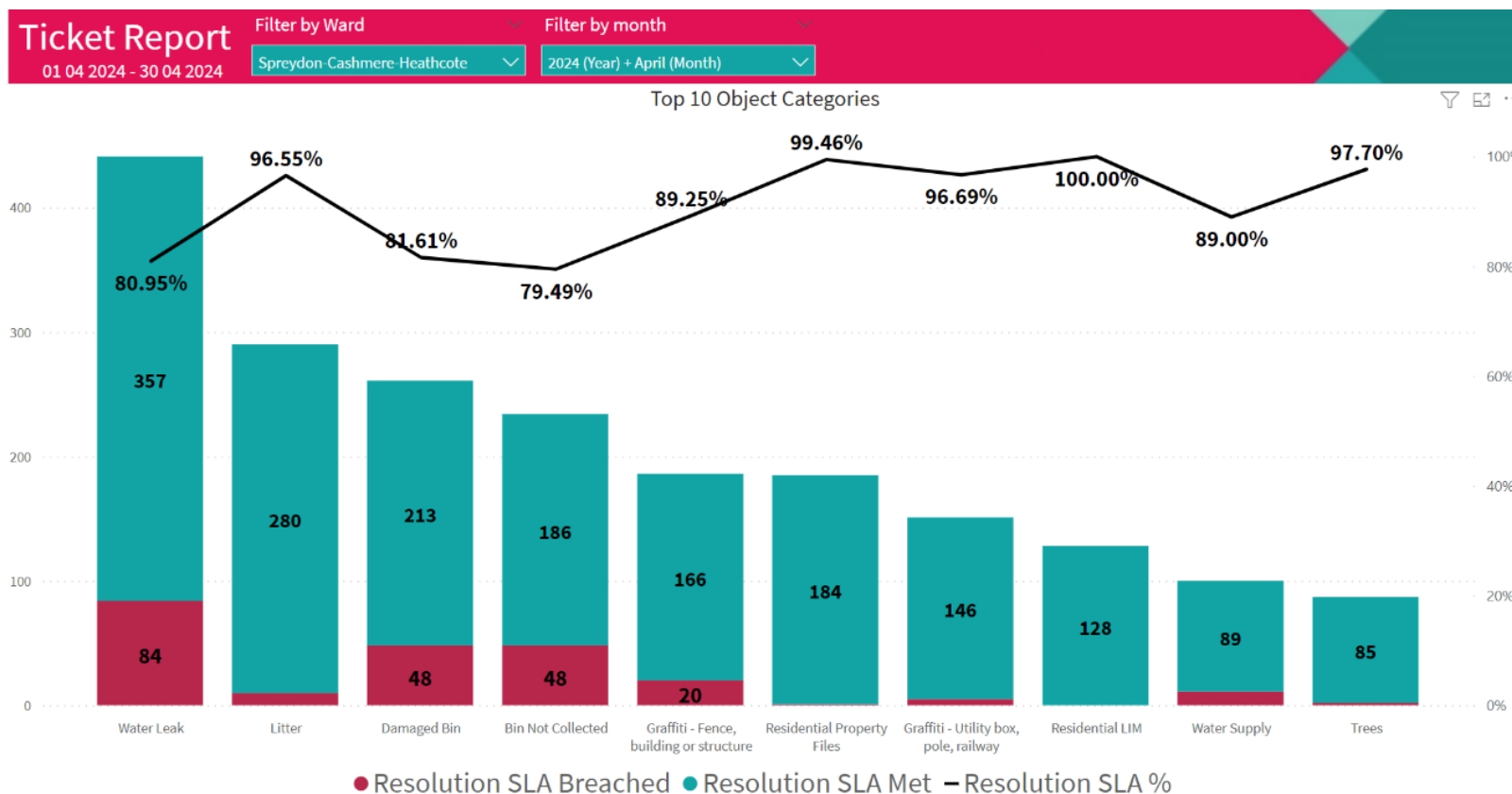
# Tickets	ObjectCategory
441	Water Leak
290	Litter
261	Damaged Bin
234	Bin Not Collected
186	Graffiti - Fence, building or structure
185	Residential Property Files
151	Graffiti - Utility box, pole, railway
128	Residential LIM
100	Water Supply
87	Trees

Future Reporting – For Board Website



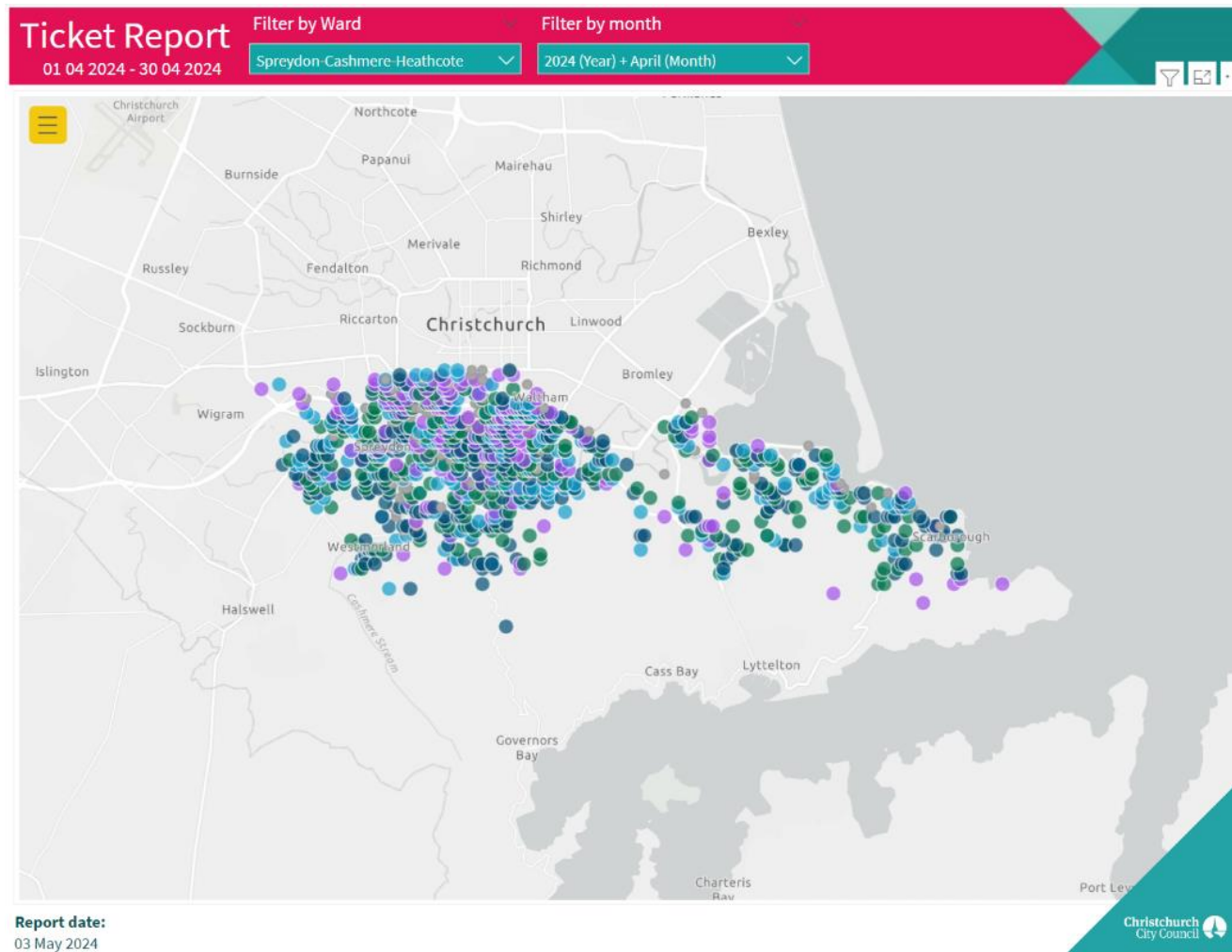
7 May 2024

Future Reporting

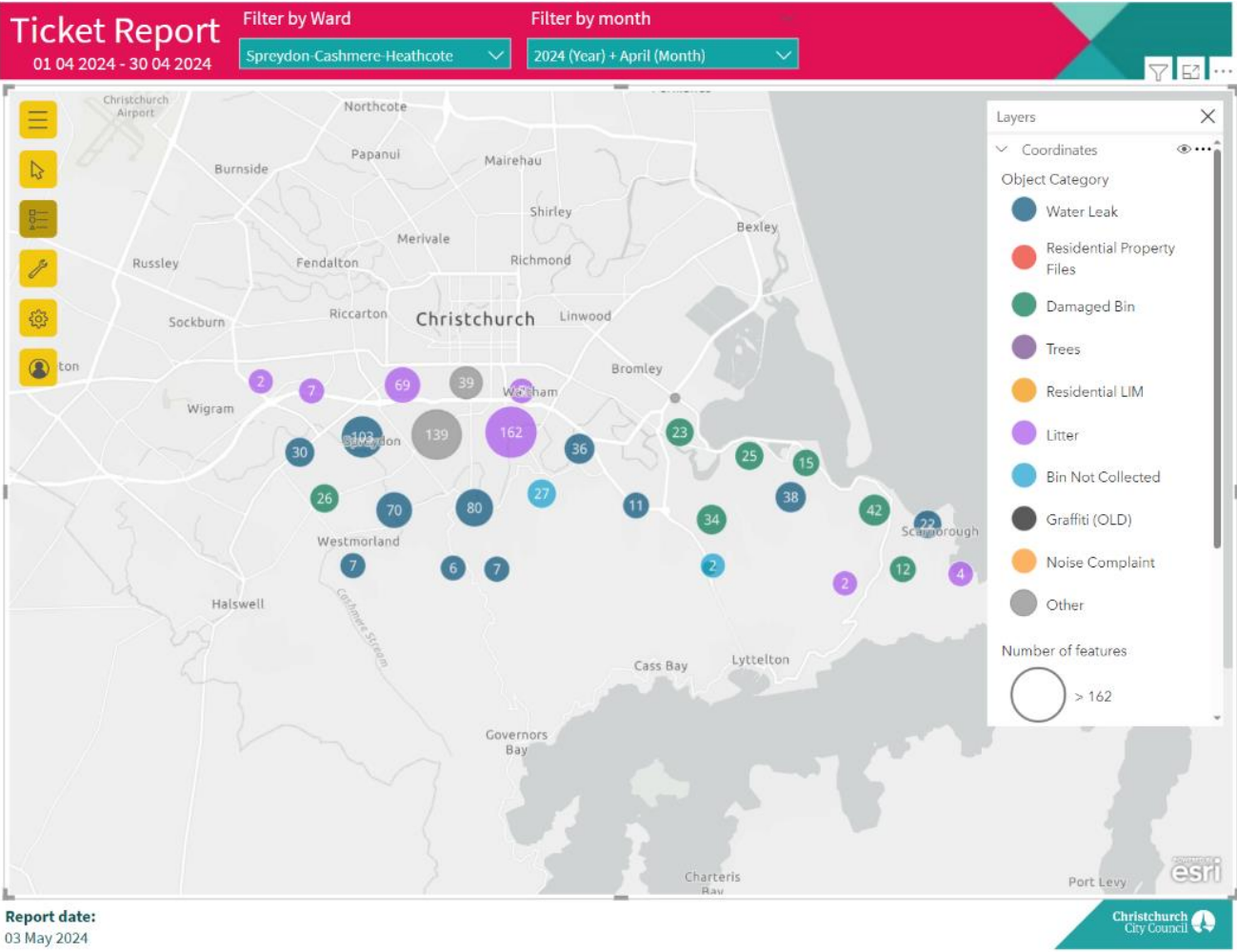




7 May 2024



7 May 2024



7 May 2024