

**Waipapa Papanui-Innes-Central Community Board
Information Session/Workshop
MINUTES ATTACHMENTS**

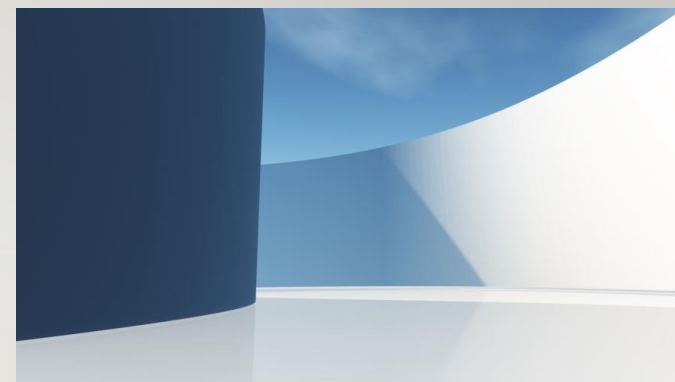
Date: Thursday 23 May 2024
Time: 4 pm
Venue: Board Room, Papanui Service Centre,
Corner Langdons Road and Restell Street, Papanui

TABLE OF CONTENTS NGĀ IHIRANGI	PAGE
2. Volunteering Canterbury	
A. Volunteering Canterbury Presentation	3
3. Petrie Park Update	
A. We Are Richmond - Petrie Park Concept Plan.....	21
5. Good-to-go ways to get to school	
A. School Travel Team Presentation	22

VOLUNTEERING TODAY

A PRESENTATION TO THE WAIPAPA PAPANUI-INNES-CENTRAL
COMMUNITY BOARD

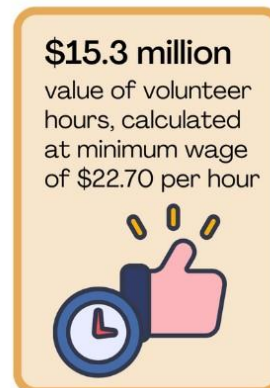
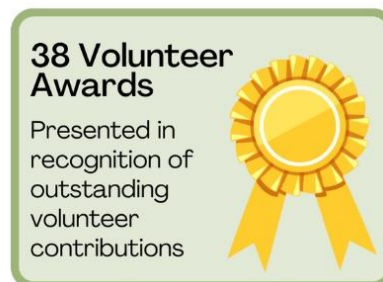
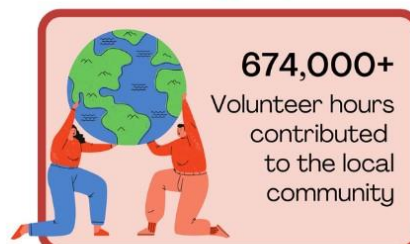
THURSDAY 23 MAY 2024



2023

Volunteering CANTERBURY

Community Impact





Themes:

The Volunteer Experience and General Landscape

Rates of Volunteering (Stats NZ 2021):

- **58.6% of people in rural areas volunteer**
- **national average is 50.7%**
- **Christchurch : 47.5%**

Themes:

The Volunteer Experience and General Landscape

Volunteer Hours (formal volunteering)

- **National average over previous four weeks : 15.9 hours**
- **Rural volunteers : 12.8 hours**
- **North Island reports a higher number of volunteer hours; but more South Islands are involved in volunteering than North Islanders as a percentage of population**

Themes:

The Volunteer Experience and General Landscape

Age of volunteers

- South Island has a slightly higher proportion of volunteers over the age of 55 compared to the North Island
- South Island has a higher proportion of volunteers under the age of 35

Themes:

The Volunteer Experience and General Landscape

Turnover of volunteers

- **Highest – Dunedin :26.2%**
- **Next – Christchurch: 21%**

Changing lifestyles

Cost of living

Accessibility to home ownership

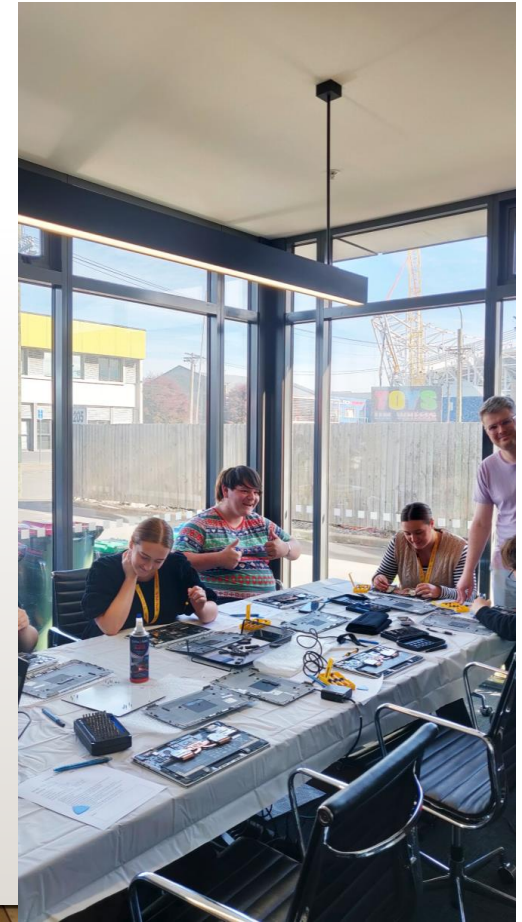
Post-COVID

“It is getting harder and harder to retain volunteers. Lots are always on the lookout for greener pastures and more interesting roles, and we’re always needing to keep up and make sure our work remains, you know, exciting and impactful”

- Volunteer Manager

Main reason people say they don't volunteer:





Teams (totalling approx 817 people) from:

Local Businesses (including):

Spark
Westpac
Beca
MBIE
Link ECU
Abbott Insurance
ANZ
Connect Group
Jade
Accenture
Ten Four Technology
RCP (Resource Coordination Partnership)
EY
IAG
Seequent
Groundline Engineering
MYOB
Foot Science International
UC Facilities Management Team
Lentune
Watties NZ
Grant Thornton
Forsyth Barr
Aggreko
Research First
Healthstream
Plexure Ltd
Simpro NZ

Special Interest Groups (including):

Christchurch Jewish Community
Step Ahead
Church of Christ

Students (including):

Christ's College
Te Kura (Correspondence School)
Southern Cross Language Institute
Loburn School

Here's where the Mahi had Meaning (approx 3,200 hours):

	Hours
0800 Hungry	1198
Christchurch South Community Garden	50
Richmond Community Gardens	160
Neighbourhood Trust	35
NZ Spinal Trust/Burwood Hospital	86
Heart Kids	18
Christchurch Community House	100
PIPS	50
SPCA	112
Waitaha School	50
Willowbank	195
Edible Canterbury	724
CCC Parks and Reserves (Sth Brighton)	120
City Mission	20
Silverstream Reserve	64
CCC Parks and Reserves (Red Zone)	129
Selwyn DC (CultureFest)	18
Volunteering Canterbury	18
CCC Graffiti Programme	30
Packe Street Community Gardens	40

For more info on Group Volunteering, contact:

Glenda Martin, Outreach Manager,
Volunteering Canterbury,
(03) 366 2442, outreach@volcan.org.nz



Support for Volunteer Programmes by Volunteering Canterbury:

Membership by community organisations has sat within the range of 267 – 272 2022/23
(compared to 260 – 268 in the previous year)

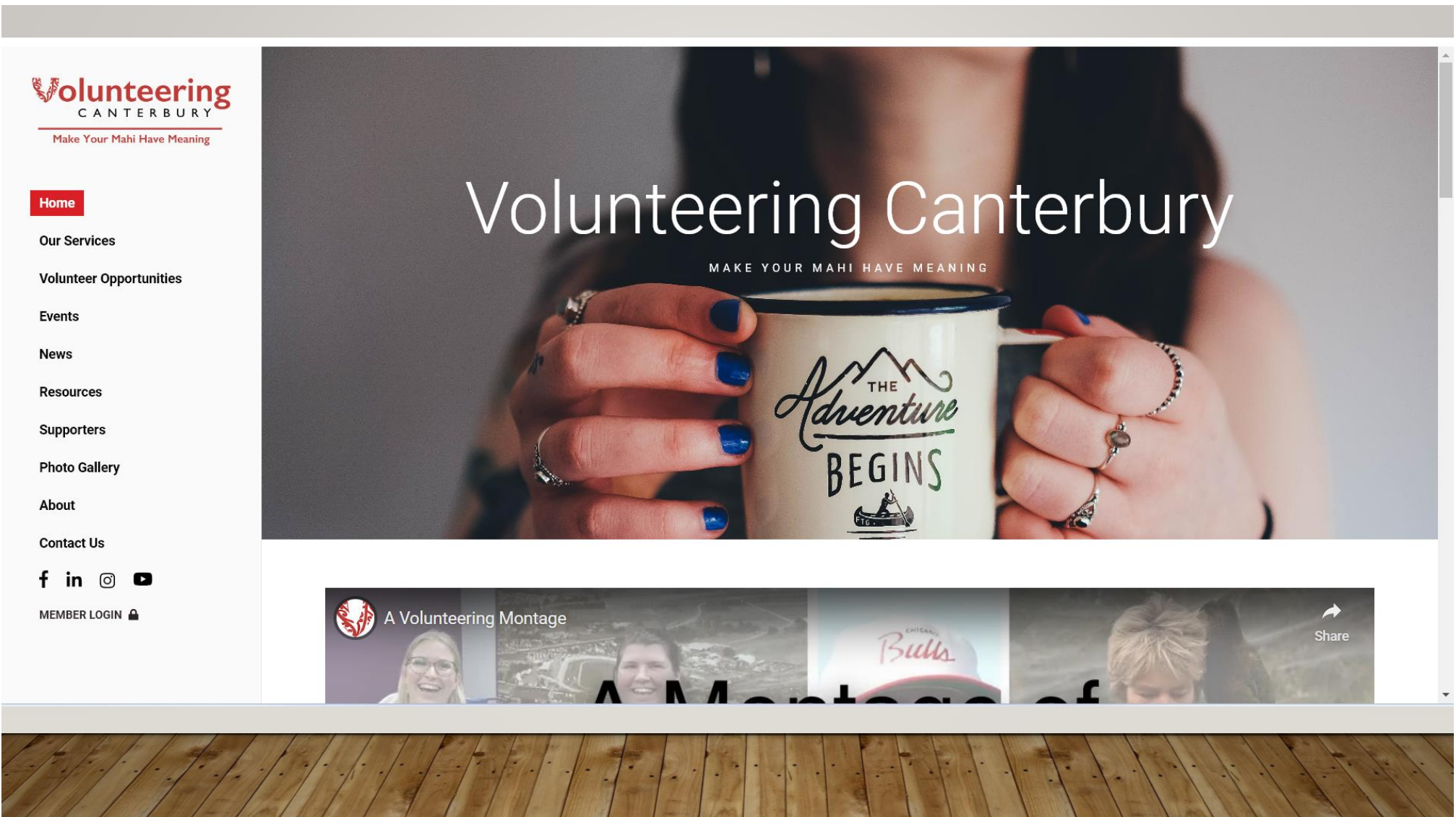
Tautoko Network: Supporting the Community Sector

Monthly trainings

Indepth Workshops

Support for Volunteer Programmes by others

- **Funding for volunteer recognition**
- **Funding for volunteer expenses**



FIVE WAYS TO WELLBEING



TALK & LISTEN,
BE THERE,
FEEL CONNECTED



Your time,
your words,
your presence



REMEMBER
THE SIMPLE
THINGS THAT
GIVE YOU JOY




EMBRACE NEW
EXPERIENCES,
SEE OPPORTUNITIES,
SURPRISE YOURSELF



DO WHAT YOU CAN,
ENJOY WHAT YOU DO,
MOVE YOUR MOOD

INTRODUCE THESE FIVE SIMPLE STRATEGIES INTO
YOUR LIFE AND YOU WILL FEEL THE BENEFITS.

© MENTAL HEALTH FOUNDATION OF NZ 2011

 **Mental Health Foundation**
mauri tū, mauri ora OF NEW ZEALAND
www.mentalhealth.org.nz



Petrie Park, North Richmond

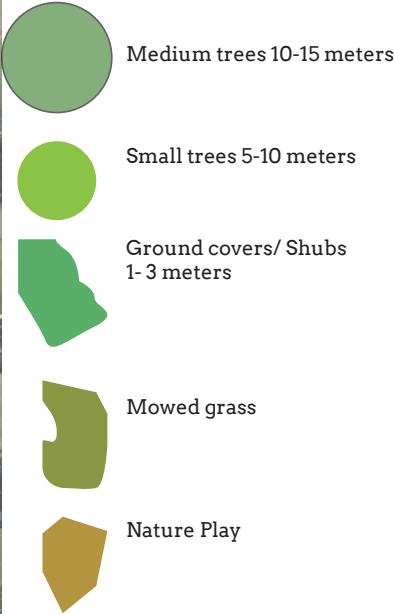


Concept master-plan

Revamp the southern half of Petrie Park, once a bowling green, with a redesigned concept that incorporates the Urban Forest Tree Plan. Include amenities for dog walkers. The formal fence of the bowling green will once again be activated. Along the fence, there will be murals and plants espaliered and seating. A shelter has been strategically located away from the historical sheds, known to have soil contaminated with reported arsenic concentrations. Soil samples were gathered from the former bowling green clubrooms area at the southwestern corner of the park, revealing the presence of asbestos in the near-surface soil. An asbestos management plan will be devised for this section

Key

- 1. Arsenic soil sample site
- 2. Shelter
- 3. Grass with dog features
- 4. Fruit trees
- 5. Urban forest
- 6 Inner path
- 7. Slatted seats
- 8. Mural walls
- 9. Nature Play
- 10. Capped asbestos



Sample 50 and Sample 35 results indicate that isolated areas of health-significant arsenic (above recreational and residential soil contaminant standards)

The area surrounding the historical sheds should not be used for produce consumption due to elevated concentrations of arsenic identified in the soil. Despite this, it is considered acceptable for recreational use, mainly due to the isolated nature of results exceeding residential guidelines. However, structures that attract people to this location for recreational purposes, such as picnic tables or other features, should not be installed unless soil management measures are implemented, such as capping.

Health significant level of asbestos (chrysotile) present at locations S55 and S56 Health significant levels of asbestos fines (chrysotile) were also identified in soil sample S55. 14m x 8 m x .05 m Cap over contaminant area




Concept plan Petrie park
Urban forest with dog park features. Scale 1:300



Concept drawing (2024) Single pitched roof that can catch rain water for fruit trees.

Good-to-go Ways to get to school





Cost for schools
\$0



Who we work with

Not just about transport



Mental Health Foundation
mauri tū, mauri ora
www.mentalhealth.org.nz

OF NEW ZEALAND

greenstar
COMMUNITIES

What we offer schools



Bikes
in Schools

Good-to-go ways to get to school

Good-to-go ways to get to school is an exciting programme designed to support schools in encouraging safe, active, fun, affordable, low-emission ways to travel to and from school.



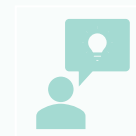
Improves student awareness
of road safety



Encourages practising
kaitiakitanga by lowering
carbon emissions through
travel habits



Encourages active fun,
friendship, confidence and a
sense of adventure.



Empowers students
through decision-making and
creative thinking



Promotes hauora (health
and wellbeing) through
activity



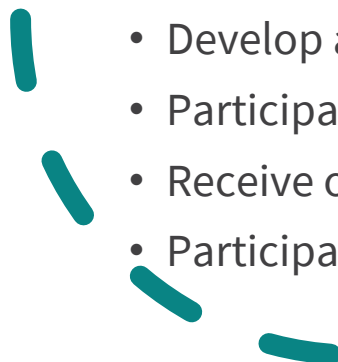
The commitments

Primary and intermediate schools:

- Participate in our March Walk or Wheel to School Week event.
- Receive our newsletters.
- Participate in and distribute our annual school travel survey.

Secondary schools:

- Develop an annual active travel promotion with students and our travel advisors.
- Participate in Crash Bash
- Receive our newsletters.
- Participate in and distribute our annual school travel survey.



Registered schools



Extended support

Available all year:

- Walking school bus workshops
- Additional Walk or Wheel weeks
- Other active travel promotions
- Classroom workshops
- School travel plans

Held annually:

- Road Safety Week - May
- Rail Safety Week - August
- Car Free Day - September



School Travel Planning

A school travel plan is a holistic approach to improving road safety and encouraging the whole school community to use active modes of transport to get to and from school.

- Used when schools have a variety of issues that need addressed
- Presented in the form of a living document that lists initiatives, infrastructure requests with target completion dates.
- The process includes initial conversations, in-depth surveys, focus groups, and official sign off.





Annual School Travel Survey

- We launched our first annual survey in 2023 and had 1800 responses.
- Helps us understand about travel patterns across Christchurch, how we can improve our interactions with schools.
- The survey is completed by one school representative and all students/parents/caregivers.



Scooter skills

New offering being trialed which is only for schools signed up to the programme



In-Class workshops

45 minute in-class curriculum-based workshops based on safe and sustainable travel

In-class workshops

- Exploring Active Transport
 - Junior and Senior
- Safer Speeds
 - Senior (Year 5-8)
- How to catch the bus
 - Senior (Year 5-8)
- Making a difference and creating change
 - Leadership groups





Walking school buses

- We offer walking school bus workshops to school communities that are interested.
- We have resources such as consent forms, route plans and volunteer guides
- We also help with route assistance, ensuring the routes are safe.

Frequent requests

- Parking enforcement
 - Can be done under the programme
- P3 parking restrictions, yellow no parking lines, parking tics/white lines or school warning signs
 - Can be done under the programme
- Traffic lights, kea crossing, zebra crossing or raised platform
 - Major works, likely to be needed to be put on a list due to high costs. A full school travel plan would be needed.
- Traffic calming, new road layouts or new footpaths
 - Major works, likely to be needed to be put on a list due to high costs. A full school travel plan would be needed.

All schools



March Walk or Wheel to School Week

Term One event

- Annual event that is held in the first full week of March each year during term one.
- March 2022, we restarted it as a week-long event, which proved popular increasing registrations by 25%
- This is a fun, action packed week full of active travel initiatives, daily themes, heaps of awesome giveaways
- Each school sent a resource pack, full of spot prizes, promotions, Walk or Wheel passports and more.
- Registrations were 105 for 2024!

Our long-term vision is to have every primary and intermediate school signed up in the region.



Walk or Wheel to School Week

Monday 4 March - Friday 8 March 2024



October Walk or Wheel to School Week

New event in term four!!

- Our schools love our term one event so from 2024 onwards we will also be holding a term four event
- This event has been created due to high demand from schools and parents for more events in this nature.
- Again this is a fun, action packed week full of active travel initiatives, daily themes, heaps of awesome giveaways
- Each school sent a resource pack, full of spot prizes, promotions, Walk or Wheel passports and more.



Road Safety Week - May

Term Two event

- Run by Brake
- Hundreds of schools, kindergartens, youth clubs, community campaigners, employers, sports clubs, fire officers, local councils, paramedics, driving instructors get involved nationwide
- Aims to inspire communities to take action on road safety and promote life-saving messages during the Week and beyond.
- It's free to sign up, access is given to various resources and ideas to use during the week.
- In 2024 we will be supplying schools in Christchurch who have signed up with a resource box of prizes to use



Rail safety week - August

Term Three event

- Track Safe foundation run this event
- An annual community awareness week designed to engage the community in safe rail practices.
- It's free to sign up, access is given to various resources and ideas to use during the week.
- Only applies to schools near railway lines
- Working with them in the future to deliver their workshops to more schools



**Rail
Safety
Week**

Car free day – 22nd September

- World Car Free day is a worldwide movement that brings communities together to consider new ways of getting from A to B, and ditching the car when they can.
- World Car Free Day is held on the same date every year the 22nd of September.
- We encourage all schools to get involved in this day.





Cycle Safe

- This is a programme run by our Cycle Safe team
- Cycle safe training is for year 6 students
- 3606 students over 2023
- 100% satisfaction rate from schools

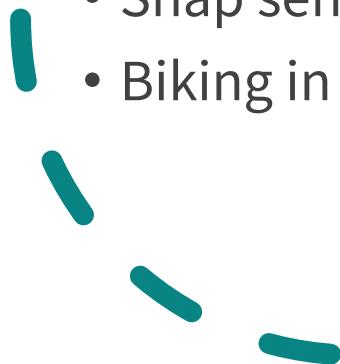
Crash Bash



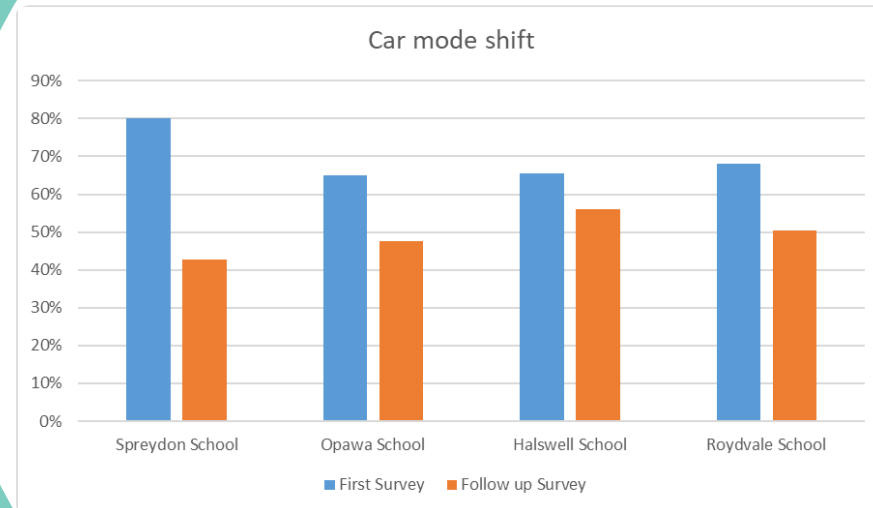


Other resources we have

- Bike maps
- Adult bike skills flyers
- Garage 529 flyers
- Metro information/maps
- Snap send solve
- Biking in our towns and cities flyer




**It actually
makes a
difference**



Kotahitanga Award





Cost for schools
\$0

Thank you!

Any questions?