

Council Information Session/Workshop

AGENDA

Notice of Information Session/Workshop:

A Council Information Session/Workshop will be held on:

Date: **Tuesday 5 March 2024**

Time: **10.30 am - 11.30 am**

Venue: **Council Chambers, Civic Offices,
53 Hereford Street, Christchurch**

Zoom Link:

<https://us02web.zoom.us/j/6439418430?omn=86418455067>

Meeting ID: 643 941 8430

Membership

Chairperson	Mayor Phil Mauger
Deputy Chairperson	Deputy Mayor Pauline Cotter
Members	Councillor Kelly Barber
	Councillor Melanie Coker
	Councillor Celeste Donovan
	Councillor Tyrone Fields
	Councillor James Gough
	Councillor Tyla Harrison-Hunt
	Councillor Victoria Henstock
	Councillor Yani Johanson
	Councillor Aaron Keown
	Councillor Sam MacDonald
	Councillor Jake McLellan
	Councillor Andrei Moore
	Councillor Mark Peters
	Councillor Tim Scandrett
	Councillor Sara Templeton

29 February 2024

Principal Advisor

Mary Richardson
Interim Chief Executive
Tel: 941 8999

www.ccc.govt.nz

Please Note:

This forum has no decision-making powers and is purely for information sharing.

TABLE OF CONTENTS NGĀ IHIRANGI

1. Apologies Ngā Whakapāha 3

WORKSHOP ITEMS

2. Community Funding - Metropolitan Strengthening Communities Priorities..... 5

10.30am-11.30am

Presenter: Joshua Wharton – Community Funding Team Leader

1. Apologies Ngā Whakapāha

At the close of the agenda no apologies had been received.

2. Community Funding - Metropolitan Strengthening Communities Priorities



Reference Te Tohutoro: 24/291656

Presenter(s) Te Kaipāhō: Joshua Wharton – Community Funding Team Leader

1. Detail Te Whakamahuki

<p>Purpose and Origin of the Workshop</p>	<ul style="list-style-type: none"> The purpose of this workshop is to discuss funding priorities for the 2024/25 Strengthening Communities Fund. Significant local funders are tightening their criteria, and community organisations in every sector are responding to rising costs and general community need. Staff wish to discuss with elected members how best to respond to these pressures. To support this discussion, staff have prepared relevant information to this discussion (Attachment A), and provided guidance based on professional understanding of the community sector and other quantitative evidence.
<p>Timing</p>	<p>This workshop is expected to last for 60 minutes.</p>
<p>Confidentiality</p>	<ul style="list-style-type: none"> The workshop and any shared information are not confidential.
<p>Outcome Sought</p>	<ul style="list-style-type: none"> Staff are seeking early guidance as it relates to the assessment of applications. This includes both <u>what should <i>not</i> be funded</u>, as well as <u>what areas might be given particular emphasis over the coming twelve months</u>. More detail, including staff narrative to inform both discussion points are included in Attachment A.
<p>ELT Consideration</p>	<ul style="list-style-type: none"> This has not been considered by ELT as it concerns the operation of an annual funding cycle that will not impact on agreed levels of service or existing budgets.
<p>Next Steps</p>	<ul style="list-style-type: none"> Applications for the 2024/25 Strengthening Communities Fund open on the 4th of March. The application window will close at noon on the 12th of April. Staff will individually assess applications and bring recommendations to the Funding Subcommittee on the 22nd of July. Final funding recommendations for allocation of the fund will be brought to the 22nd of August Council meeting for decision.
<p>Key points / background</p>	<ul style="list-style-type: none"> Costs for local charities and community organisations are increasing, as well as for the communities they serve. As such, the number of applications received from organisations for contestable community funding is increasing each year, outstripping the ability for the fund to meet demand. Other funders (such as Rata) have significantly reduced the number of organisations they fund annually, by way of reducing total investment and tightening criteria.
<p>Useful Links</p>	<p>https://www.ccc.govt.nz/assets/Documents/The-Council/Plans-Strategies-Policies-Bylaws/Strategies/Te-Haumako-Te-Whitingia-Strengthening-Communities-Together-Strategy-document-WEB.pdf</p>

Attachments Ngā Tāpirihanga

No.	Title	Reference	Page
A  	Council SCF funding priorities workshop supplementary information	24/314749	7

Signatories Ngā Kaiwaitohu

Author	Josh Wharton - Team Leader Community Funding
Approved By	Gary Watson - Manager Community Partnerships John Filsell - Head of Community Support and Partnerships Andrew Rutledge - Acting General Manager Citizens and Community

Discussion on Funding Priorities:

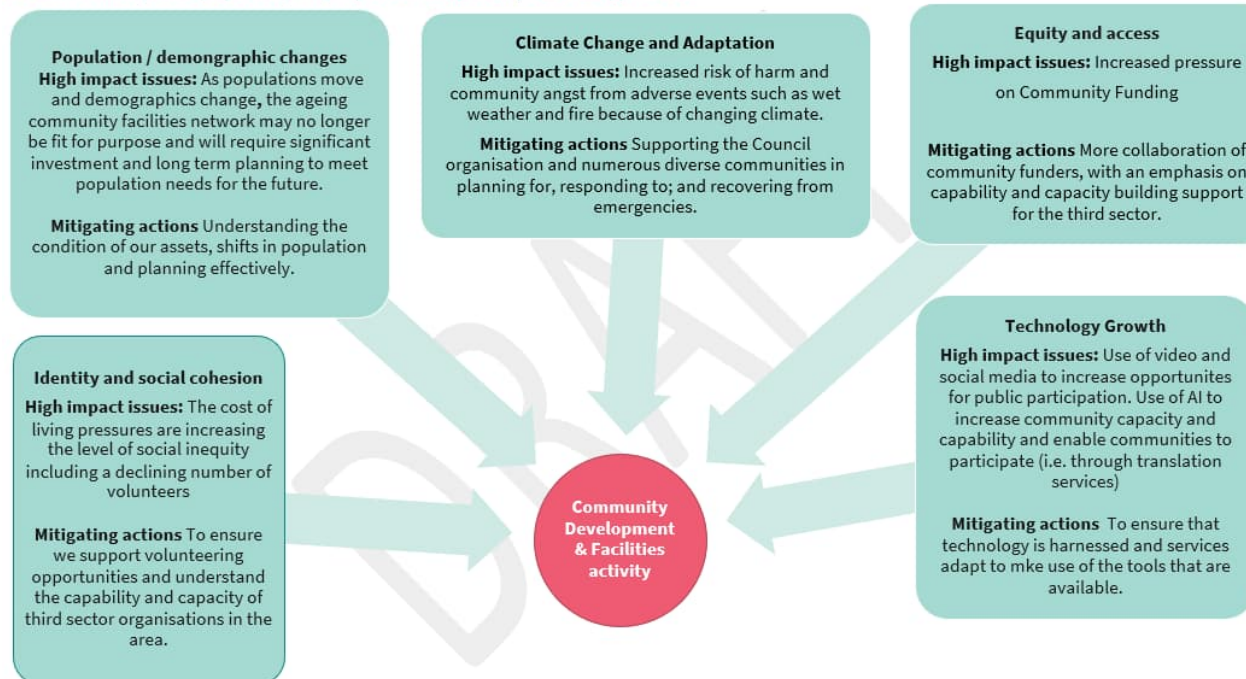
As detailed in the briefing memo, staff are seeking early guidance from elected members on priorities for the Metropolitan Strengthening Communities Fund for 2024/25. An example of an approach could be to emphasise:

- Māori/Pacific People-related applications,
- Applications that ease Cost of Living Pressures or support Economic Resilience, and
- Projects that encourage social cohesion and address isolation in communities of need
- Others?

From the Draft LTP Activity Plan – Community Development & Facilities:

3.2. The high impact issues and mitigations planned

The more prominent ones that in particular effect our Community Outcomes or Strategic Priorities are summarised on this page. For further details on issues, including the current status, future projections, likely impact and mitigations please see Appendix B.



From the Strengthening Communities Together Strategy (adopted 2022):

Our key priorities for the next five years

We have identified the following high priority areas based on what communities have told us is important to them.

As a result we will:

- Work to better understand and respond to factors that exclude people from fully participating in their communities and across Council services.
- Improve the capture of consistent and relevant data, set clear targets and partner with communities and others to ensure more equitable and inclusive opportunities for all.
- Improve community safety, with a specific emphasis on the central city after dark.
- Encourage community led activities that increase volunteering in local neighbourhoods, supporting the activation of public spaces and places to increase inclusion and a sense of belonging.
- Ensure that the community’s priorities, values, aspirations and concerns are incorporated at all levels of the organisation through policy development, planning, decision-making, service delivery and review.
- Improve our engagement processes so people and communities are fully informed and able to authentically shape and influence their futures.
- Support and enable communities to respond to the impacts of climate change and emergencies, with a particular emphasis on underrepresented or vulnerable communities.

Nga waahanga matua: Priority areas

As highlighted in the ‘How are we doing?’, our latest resident surveys highlighted some worrying trends. As a result, we have identified some key themes that we will give particular priority to over the next 5 years to achieve real and sustainable change.

Access and Equity	Public Safety	Active Citizenship	Resilience
<p>We will:</p> <p>Work to better understand and respond to issues that exclude people from fully participating in their communities and across Council services by:</p> <ul style="list-style-type: none"> • Improving the capture and use of consistent and relevant data • Setting clear targets and milestones • Partnering with communities and others to ensure more equitable and inclusive opportunities for all. 	<p>We will:</p> <p>Improve community safety, with a specific emphasis on the central city after dark.</p> <p>Encourage community-led activities that increase volunteering in local neighbourhoods.</p> <p>Support the community activation of public spaces and places to increase a sense of safety, inclusion and belonging.</p>	<p>We will:</p> <p>Improve our engagement practices so people and communities are able to authentically shape and influence their futures by:</p> <ul style="list-style-type: none"> • Ensuring that the community’s priorities, values, aspirations and concerns are incorporated at all levels of the organisation through policy development, planning, • Decision-making, service delivery; and review. 	<p>We will:</p> <p>Support and enable communities to respond to the impacts of climate change and emergencies, with a particular emphasis on underrepresented or vulnerable communities.</p>

Other Questions:

(What not to fund)

Clarifying Council's position on applications that are deemed to be the primary responsibility of Central Government.

In the community sector, many groups are seeing a reduction in funding from Central Government due to changes in their contracts for service, or a removal of supplementary funding put in place over COVID. Staff are currently not recommending applications for funding, where the purpose of that funding is deemed to be the primary responsibility of Central Government, or the application is to fill a hole left by the retraction of existing government contracts. Does Council support the continuation of this approach?

An example of a request to cover Central Government contracts is: The Christchurch Budget Service Trust. This organisation has recently had their MSD contract for specialised budgeting services cut and in response, have reached out to Council to help cover the loss of this funding.

Two examples of applications that we would consider to be the primary responsibility of Central Government are:

- Life Education Trust (Ministry of Education)
- The Cancer Society (Ministry of Health)

Where does Climate Change & Environmental Sustainability fit into this discussion?

The Strengthening Communities Fund supports a small number of 'Environmental' applications through the Strengthening Communities Fund each year, but a majority of organisations in this category apply to the Sustainability Fund or Biodiversity Fund instead.

Recognising this is a priority area for Council, how do applications in this area fit with contestable community funding?