

**Te Pātaka o Rākaihautū Banks Peninsula Community
Board
MINUTES ATTACHMENTS**

Date: Monday 26 February 2024
Time: 10 am
Venue: Wairewa Little River Boardroom, 4238 Christchurch
Akaroa Road, Wairewa Little River

TABLE OF CONTENTS NGĀ IHIRANGI	PAGE
3. Pigeon Bay Settlers Hall Committee	
A. Item 3 Pigeon Bay Presentation - Pam Richardson Banks Peninsula Community Board Hui a Hapori 28 February 2024	3



A 'taste' of Pigeon Bay

Pigeon Bay a community of committed caring residents

Willing to work tother and making the Bay their home.

A Bay with something for everyone walking tracks, fine scenery and the amenities to allow us to live fulltime in the Bay

The Pigeon Bay War Memorial

CCC maintain the War Memorial - is a structure impacted by the affects of the wind and tide causing erosion of the coastline

Worked with Parks team to reinforce the seawall .

Used the contractors already CCC accredited

Maybe the future of the site unsure and the Memorial may need to be re sited .



Pigeon Bay War Memorial and sea wall

FENZ Rural Fire Party

The Pigeon Bay Rural Fire Party is one of several across Banks Peninsula . Some of the volunteers have had considerable training and experience .

The team commit to regular training and met NZ Unit Standards with their training held at various sites including at the Pigeon Bay Hall.

Equipment including appropriate safety uniforms etc supplied .

A ready to go fire trailer is housed down at the Boat Park - includes all their tools of trade .



FENZ container Wharf Rd

Pigeon Bay Settlers Hall Wharf Rd Pigeon Bay

An old facility opened in 1923 funded and built by the community .

A vital facility in the community used by a range of groups and organizations - the Akaroa Area School , the Reserve Committee, community , social functions , Ecan meeting Pig's Ear , gig's , weddings etc.

A partnership we manage very successfully with the Christchurch City Council .

Our community hub includes post boxes and could be used in adverse events . Building out of the inundation zone



Recent
upgrade to the
kitchen
facilities
Pigeon Bay
Hall

A local resident donated a modern kitchen from an old homestead being refurbished .

Sought approval from the Christchurch City Council and along with appropriate staff worked with us to install.

The outcome stunning - using skills and resources available in the community and completed over a 9 day period .

Funded from the Hall account along with donated materials and labour .



Pigeon Bay Hall kitchen re novation 2023

Forming an Incorporated Society

For some time the Hall Committee have been looking at forming an Incorporated Society

- Pigeon Bay Society Incorporated

To have an umbrella organization - a legal structure to allow the opportunity to consider other facilities under the structure eg the Historic Knox Church Pigeon Bay owned by the Presbyterian Presbytery . Maybe looking to future community ownership.

For supporting and sourcing other funds for a range of community activities - planting programmes at the Wharf Rd estuary area



Estuary area Wharf Road bridge

Community Resilience Group

Have had a recent community meeting with a local resident willing to pull together an information sheet for distribution .

Phone numbers grouped by road warden .
Alert texts being considered.

Pigeon Bay resource inventory [people places, supplies for emergencies] .

Looking to develop a plan identifying and addressing some of the risks and hazards in Pigeon Bay .



Pigeon Bay Roading Network and Maintenance

3 roads into Pigeon Bay access out of the Bay via Holmes Bay - Port Levy .

A number of roads not suitable for 2 WD cars , mobile homes or trucks - would like to see improved information - signage and GPS identifying roads not suitable as above .

Challenging to maintain with increased use of roads .

Impacts following storms work with community and landowners .

Need to see improving levels of service and maintenance continue including with increasing size of culverts .

Acknowledge recent budget increases and hope that budgets are not cut



Some closing comments

The Pigeon Bay waterfront is very popular with freedom campers - we would like to see some prohibited areas included in any review.

Our community would love to work with the Christchurch City Council and Environment Canterbury to install some seawalls .

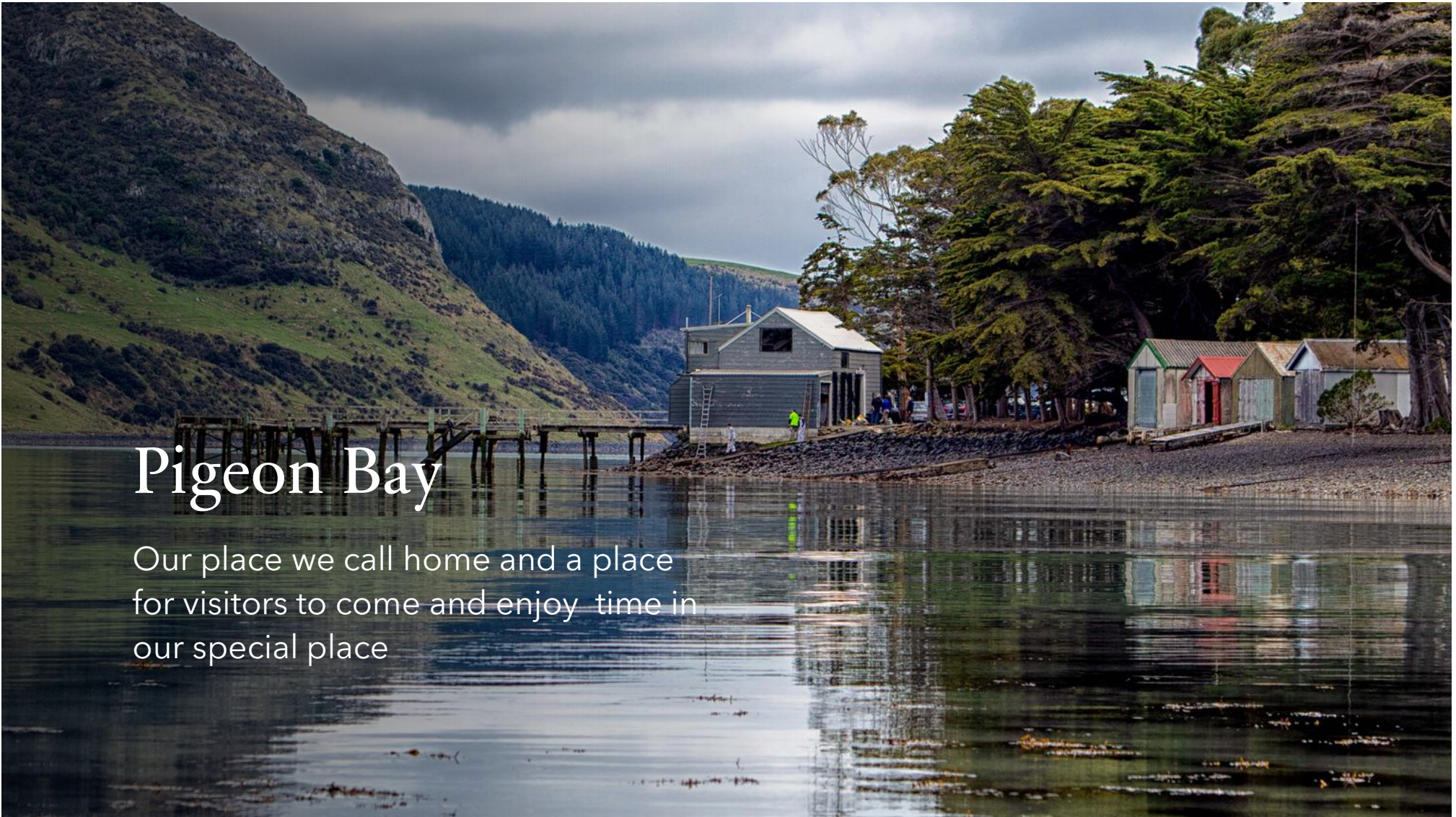
The Boat Park a reserve where we would like to see a picnic table replaced - old and broken.

We appreciate ongoing management of waste skips , the grass mowing contracts and community mowing in the Bay ,small community water supply .

The City Council is part of the team and we like to hear of any work they are undertaking in the community and partner where we can .



Pigeon Bay Boat Park and the delapidated picnic table



Pigeon Bay

Our place we call home and a place
for visitors to come and enjoy time in
our special place