

**Waipuna**  
**Halswell-Hornby-Riccarton Community Board**  
**MINUTES ATTACHMENTS**

---

**Date:** Thursday 14 September 2023  
**Time:** 4.30 pm  
**Venue:** Horoeaka Room, Rārākau: Riccarton Centre,  
199 Clarence Street, Christchurch

---

<b>TABLE OF CONTENTS NGĀ IHIRANGI</b>	<b>PAGE</b>
<b>4.1. Public Forum - Birthright Canterbury Trust</b>	
A. Presentation - Birthright Canterbury Trust .....	3
<b>4.2. Public Forum - Youth Development Fund Grant Recipients' Report back</b>	
A. Presentation - Hillmorton High School.....	9
<b>4.3. Public Forum - Parking issues on Elsie Street, Halswell</b>	
A. Presentation - Rita Estrella .....	20

---



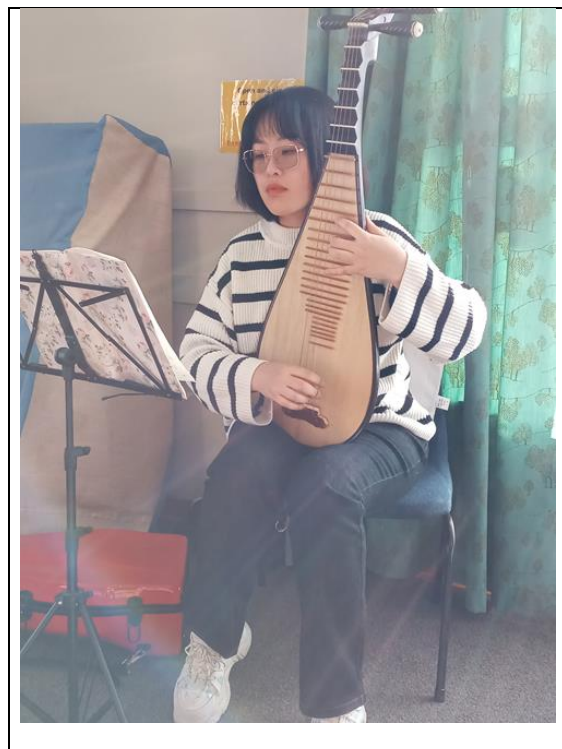
**Social connection activities for single parents**  
**Connect 'n learn group every Friday, 10 am to 12nn,**  
**At Phillipstown Hub**  
**They do various indoor and outdoor activities throughout**  
**the year.**



**Social connection activities for Whānau**  
**Special events such as**  
**✚ Matariki Celebration**



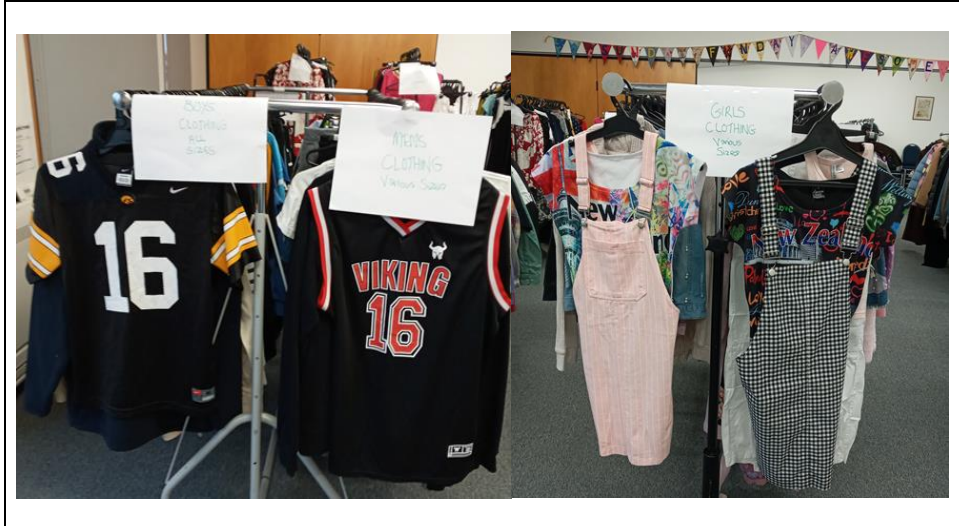
- ✚ Shared kai
- ✚ Activity facilitated by a parent who attends the Connect 'n learn group
- ✚ Parents and children enjoyed and have painting their Matariki stars
- ✚ Parents shared their talents like playing pipa (traditional Chinese musical instrument)





Social connection activities for Whānau  
Special events such as  
+ Pop Up Teens Clothing Shop





- ✚ Developed employable skills such as customer service, handling the till, planning and organisational skills.
- ✚ Increased social connections and importance of living sustainably.
- ✚ Teens choose their own outfits
- ✚ Community members donated items to the event
- ✚ The positive experience from being part of the solution, being a volunteer and connecting with the community have lasting impact to a young person's life.
- ✚ Having some experience as a volunteer to write on their CV when they look for afterschool jobs is a huge help for getting a job.
- ✚ The project not only reduces waste, create awareness about current climate issues but also the helps in creating a better look at the human needs and living sustainably.
- ✚ Families are keen to do another pop-up event.

### Outcomes

- 50 parents who are experiencing social isolation are home visited by the social worker and supported to create plans to reduce feelings of social isolation

**Actual 50 parents who are experiencing social isolation are home visited by the social worker and supported to create plans to reduce feelings of social isolation**

- 30 children are supported to increase participation in after school and school holiday activities

**Surpassed outcome 76 children are supported to increase participation in after school and school holiday activities included after school one to one tutoring programme, participation to Pop up shop planning huis and implementation, school holiday outings, leadership courses and individual extracurricular activities.**

- 10 families are referred to specialist agencies to respond to their identified needs

**Surpassed outcome 19 families are referred to specialist agencies included referrals for counselling, parenting, learning assessments for children and parents, mental health providers, school uniforms and extracurricular needs.**

- 35 parents participate to activities that enhance their self-confidence and skills

**Surpassed goals 106 parents participated in activities that enhance their self-confidence and skills. Included participation in Pop Up planning, organising sessions and implementation, parents' group and social connection activities and various trainings attended by parents.**

### Feedback from a parent:

**"Knowing that I have a relationship with a trusted, consistent, empathic worker, makes a huge difference in my life and in raising my children."**

**Birthright Canterbury Trust is very appreciative of**

**Waipuna Halswell-Hornby-Riccarton Community Board's support for the contribution towards**

**Social Worker wages \$4500 through the Discretionary Response Fund received in April 2023.**

**Thank you so much.**



## Introduction of team



## Aim of the game, - Zach



REC

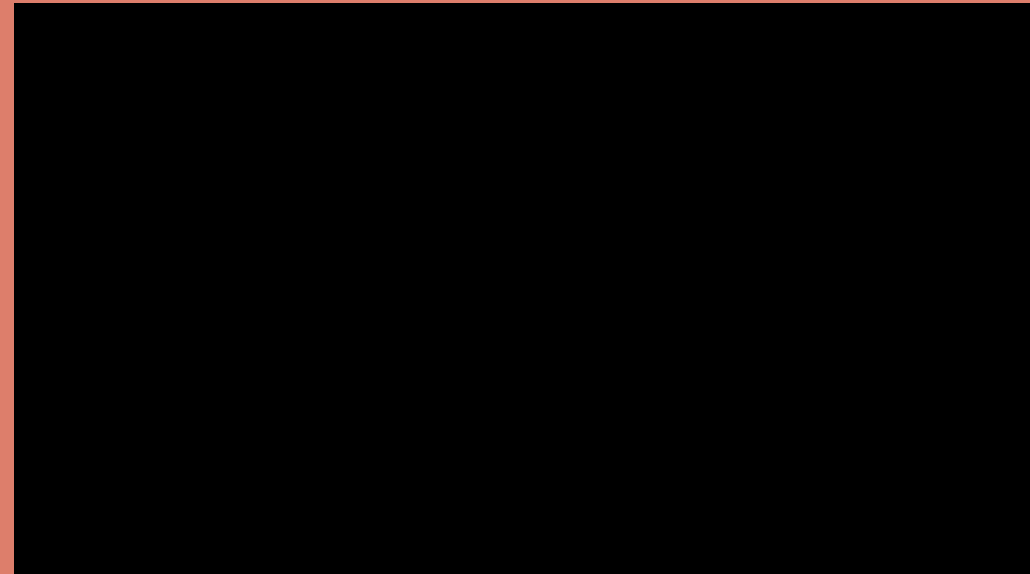
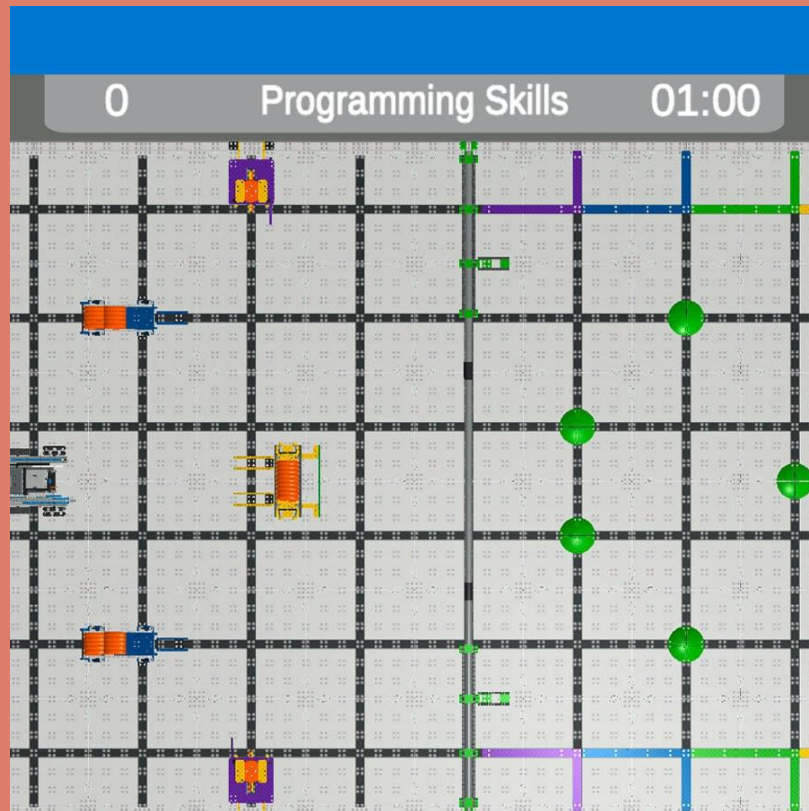
Qualification 198  
Opportunity

Rank	Team
18	29766B Quarry Lads & Lassies B Súmesville, Indiana, United States
23	35460A Hillmorton Tigers Christchurch, New Zealand

230



## Game/fields

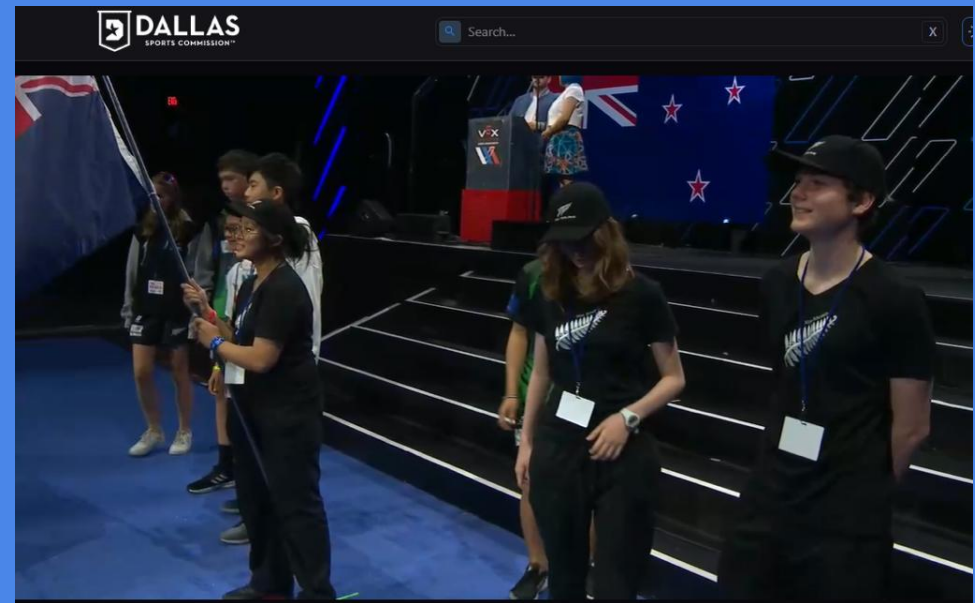




## Leading up to the World Championships

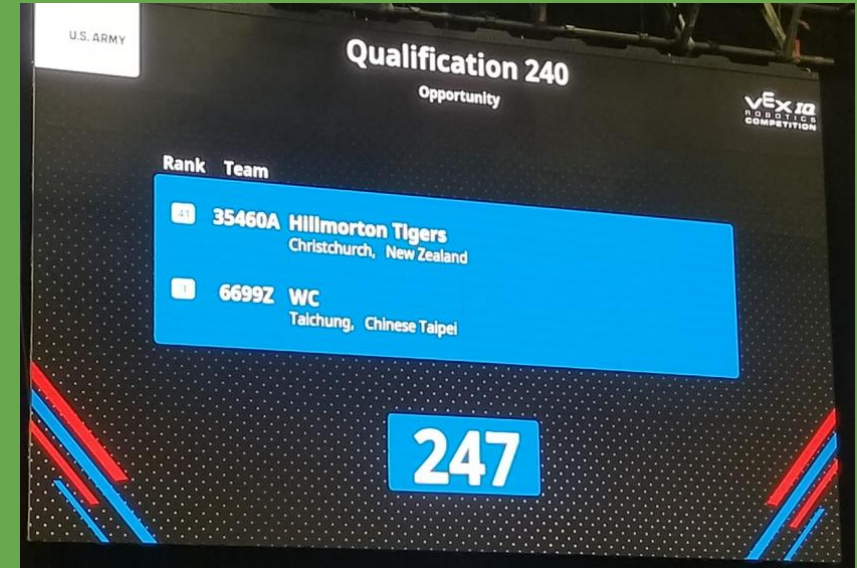


## Orientation and Grand Opening:





## The Competition:






## Finals and Closing Ceremony:





# Finals Standings

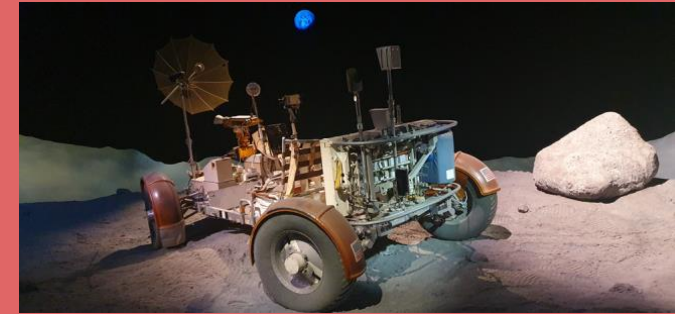
Middle School



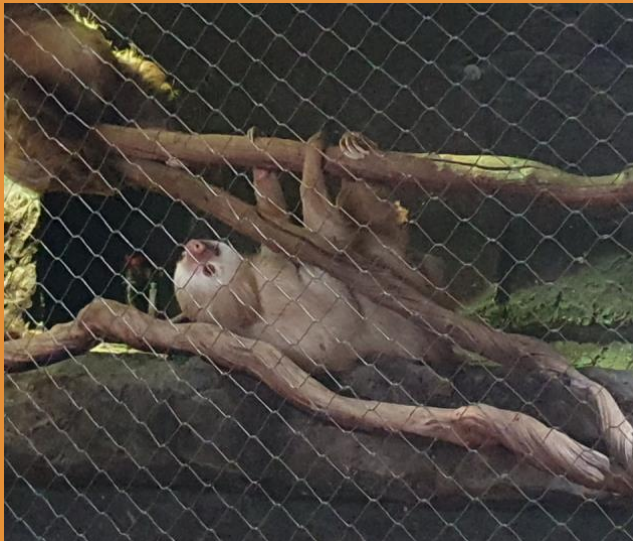
<b>Technology</b>				<b>Innovate</b>	
1	84H	Kewlist Kids	260	6	57696B Tempest
	8666B	Shanghai Senfuedu Robot B			48495A Rovers
<b>Research</b>				<b>Spirit</b>	
2	8390E	// Caution Tape //	255	7	3211G Magikid The Infinite D
	32881A	Arrowhead			95133E Season Stealers
<b>Opportunity</b>				<b>Design</b>	
3	85974A	Wa-Nee: Warriorz	252	8	1025A Penguin Robotics
	126C	FNATIC			1622V Forza
<b>Arts</b>				<b>Science</b>	
4	62372B	501st Army	245		85048C Null Cybercats
	11686E	I'm a Banana			1021S Xt SmashBros
<b>Math</b>				<b>Engineering</b>	
5	47J	Techno Wizards	241		839A // Caution Tape Alpha //
					1521W Wien



## Other experiences of our trip - NASA:



## Aquarium:



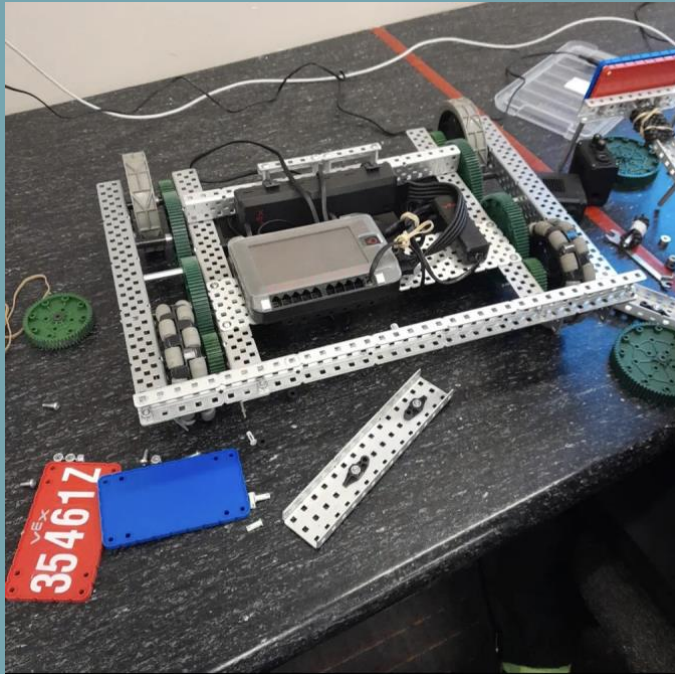


## 6th Floor Museum at Dealey Plaza:





Now what?



# **ELSIE STREET PARKING ISSUES AND SOLUTIONS**

Presented by  
Rita Estrella

# AGENDA

The ISSUES  
The Solutions



# THE ISSUES

## Parking Breaches (Inconsiderate Parking)

- Parking on right hand side of the road
- In front of or closer to 1 metre to a vehicle entrance
- Should not park during hours of darkness unless clearly visible to other road users
- Near a corner curve or intersection

SAMPLE FOOTER TEXT





# THE ISSUES – SAFETY & SECURITY

- Elsie Street is reduced to a single lane during hours crucial for emergency vehicles (fire truck, ambulance) and security concerns (overnight)
- Tenants leaving their cars parked without moving for weeks because they ride the bus. Elsie is a car storage.
- Increase in near misses and accidents (2 cars including mine were crashed into and one service vehicle broken into, and tools stolen)

SAMPLE FOOTER TEXT





# THE ISSUES

- Garages are not used. Two of the houses have 4-5 cars each and they park a total of 7 cars on the street everyday
- Fights have occurred. Guests have parked blocking a driveway with parked vehicles.
- Incidents of cars refusing to yield when two cars meet on opposite directions
- Partying every weekend- parked guests leaving early morning, intoxicated and a danger to motorists

SAMPLE FOOTER TEXT



# FUTURE ISSUE

**FAYE HOMES 25-UNIT  
MEDIUM DENSITY HOUSING  
BLOCK (Conailius St) – This  
housing development has  
just been completed.  
Mostly 3- bedroom  
townhouse with only 1  
allotted car parking each  
off street.**

SAMPLE FOOTER TEXT



# THE SOLUTIONS



# PARKING BAY

**Karamu, Longhurst and Wigram  
Skies all have them- why not  
Cloverden? We need our 2-lanes  
back**

20XX

8



# RESERVED PARKING

One on-street-parking per  
property to avoid street  
hogging and vehicle storage  
by residents





# PARKING SIGNS

Signs to indicate Emergency Vehicle Only Parking as an example

# SUMMARY

Elsie Street in Cloverden, Halswell has become the worst street in the neighborhood. Our safety and security has worsened in the last 6-7 months, and we hope you can offer us a solution agreed by all residents.





**THANK YOU**

Rita Estrella