

Christchurch City Council MINUTES ATTACHMENTS

Date: Wednesday 6 September 2023
Time: 9.30 am
Venue: Council Chambers, Civic Offices,
53 Hereford Street, Christchurch

TABLE OF CONTENTS NGĀ IHIRANGI	PAGE
3.1.1. Public Forum - Eco-Action Nursery Trust	
A. Eco-Action Nursery Trust - Presentation to Council.....	4
3.1.2. Public Forum - Robina Dobbie	
A. Robina Dobbie - Presentation to Council	13
3.1.3. Public Forum - Susan Thorpe	
A. Susan Thorpe - Presentation to Council speaking notes.....	24
3.1.5. David Lynch	
A. David Lynch - Presentation to Council speaking notes	41
3.2.1. Simon Kingham	
A. Simon Kingham - Presentation to Council	44
11. Monthly Report from the Community Boards - August 2023	
A. Waihoru Spreydon-Cashmere-Heathcote Community Board Monthly Report - Presentation to Council.....	62
B. Waimāero Fendalton-Waimairi-Harewood Community Board Monthly Report - Presentation to Council.....	68
C. Waipapa Papanui-Innes-Central Community Board Monthly Report - Presentation to Council	76
D. Waipuna Halswell-Hornby-Riccarton Community Board Monthly Report - Presentation to Council.....	84
E. Waitai Coastal-Burwood-Linwood Community Board Monthly Report - Presentation to Council	91
F. Te Pātaka o Rākaihautū Banks Peninsula Community Board Monthly Report - Presentation to Council.....	98
17. Triannual Water Management Zone Committee Update	
A. Christchurch West Melton Water Management Zone Committee - Presentation to Council	105
18. Central Plains Water Trust - Presentation of the Annual Sustainability Report 2021/22	

A.	Central Plains Water Trust - Presentation to Council.....	119
----	---	-----

25. Central City Biannual Report: January to June 2023

A.	Central City Biannual Report - Presentation to Council	150
----	--	-----

Eco Action Nursery Trust

CC57147

2023



Thank you,
Christchurch City
Council, for
helping us so we
can help support
our community



Students from 26 schools and 2
community groups pot on and
then plant out eco-sourced
native trees into the Red Zone



In 2023 the Trust organised 25,000
natives to be planted by students
and their families



**Eco Action arranges
land to plant on
from CCC Parks at
QEII and Atlantis St**



Students and the community
collaborate to plant and
maintain the site



Successful history of planting QEII Adventure Nature Trail



Successes

- Ribbonwood 3.5m tall
- Coprosma fruiting
- Flax flowering
- Bird habitat returns



Rangi
Ruru

School grown Natives planted out

2016 - 350 trees
2017 - 610 trees
2018 - 3,150 trees
2019 - 3,400 trees
2020 - 5,450 trees
2021 - 13,350 trees
2022 - 18,000 trees
2023 - 30,000
projected
2024 - 64,000



SBHS



AGHS



Schools involved

- Tūāhiwi Kura
- Medbury
- Christchurch Boys' High School
- St Michael's Church School
- Burnside Primary School
- St Peters Primary
- Ao Tawhiti Climate Campus
- ChCh South Intermediate
- St Patrick's Primary
- Riccarton High
- SVA UC
- Richmond Community Gardens
- Charles Upham Rangiora
- Rangi Ruru
- Casebrook Intermediate
- Shirley Boys High School
- Avonside Girls High School
- Linwood College
- Christ's College
- St Margarets
- Heaton Intermediate
- Rawhiti Primary
- Cathedral Grammar
- St Andrews College
- St Andrews College Prep
- Parkview Primary
- Christchurch Girls High



**Thank you
from us all at
Eco Action
Nursery Trust**

Sponsors involved

- **CLS Canterbury Landscapes** -potting mix and seedmix
- **CCC Parks Community Partnership** programme-Ranger support, logistics, mulch, land
- **Dept of Corrections-** plant services and maintenance
- **Envirowaste-** wheelie bins
- **Isaacs Construction-** road cones
- **SBHS, Christ's College, Rangi Ruru, St Margaret's College** –logistical, moral and financial support
- **New Brighton Volunteer Fire Brigade-** water
- **School Partners-** Land space, teacher support and water

Financial Summary -what value does Eco Action provide?

^CCC CFT
\$4,285
CCCTKK
\$61,400
TOT
\$66,000

actual
*estimated

	CCC Funding (\$ x 000)	Rata Funding (\$ x 000)	Other donations (\$ x 000)	Total	Budgeted surplus (deficit)	Volunteer labour contributed at \$23.65 / hr (\$ x 000)	Trees planted valued at \$5 each (\$ x 000)	Total value added (\$ x 000)
2020	20	5	3	28	0	153 [#]	27 [#]	180 [#]
2021	66 [^]	10	14	90	0	172 [#]	67 [#]	239 [#]
2022	15 [#]	0	21	37	0	180 [*]	93 [#]	273 [#]
2023	25 [#]	0	16	41	0	224 [*]	150 [#]	374 [*]
2024 *			21 [#]	21	(28)	228 [*]	320 [*]	548 [*]
2025 *			21 [#]	21	(60)	228 [*]	320 [*]	548 [*]

Grant funding support is leveraged 10 fold by in-kind support from volunteers
Students and planters report increased feelings of worth and wellbeing from being involved.

Social Value - What does the Eco Action program provide our youth community?

- Gaining practical horticultural skills.
- Building community involvement and participation.
- Building a sense of Place by improving amenity and wildlife habitat.



- Improving our quality of life in Christchurch Ōtautahi.
- Tackling the Climate Emergency through plants sequestering greenhouse gasses.
- Improving personal mental health by improving Wellbeing.



Climate

Average Long-term Pattern of Weather in a Particular Area

KIA ORA TATOU

Greetings All

KO MAUKATUA TE MAUNGA

Sefton is the Mountain

KO RUATANIWHA TE AWA

Ruataniwha is the Lake

NO OTAUTAHU AHAU

I am from Christchurch

KO DOBBIE TOKU WHANAU

Dobbie is my Family

KO ROBBIE TOKU INGOA

My name is Robbie

My Experience

- ✓ Meteorological observer – since 1970s
- ✓ Geology technician
- ✓ Air Traffic Control – retrained in meteorology
- ✓ Early adopter in technology
- ✓ Data Analyst & Financial Director
- ✓ Business Mentor/Coach & Strategy Consultant

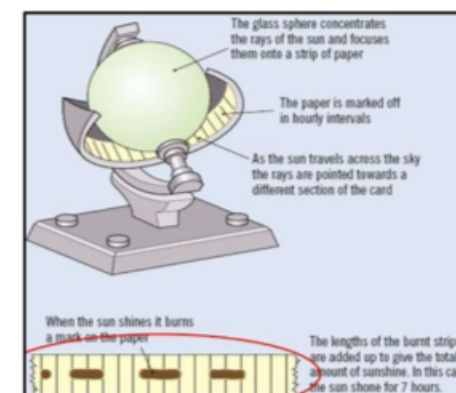
Interest in Climate Change

- Global Warming to Climate Change
- Walking at beach – unnatural clouds
- [Geo Engineering \(2007 to UN\) 2:40](#)
- [NIWA/Otago University 2011 PM Prize](#)
- Research
- Became very concerned



Changes to our Climate...

- Different ways of measuring – positioning of screens; types of equipment vs. technology
- We need to compare apples with apples, not kiwifruit
- New cloud types
- Data actuals show concerning results
- Sun data removed from Met Service

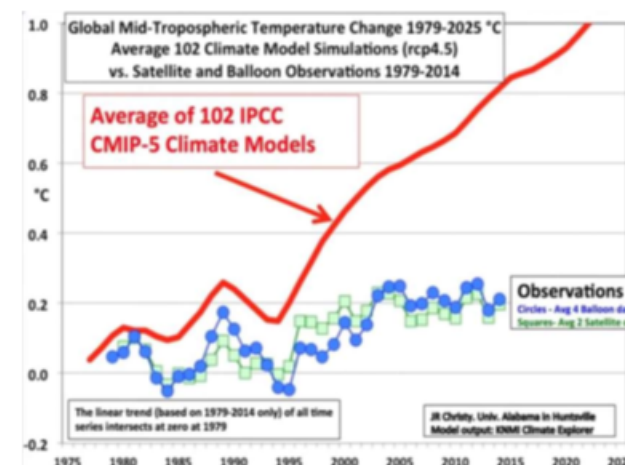


Facts vs Modelling

- Real Climate Data Sets from Satellites and Weather Balloons
- [Dr John D Christy on Making Sense of Data in the Climate Change Debate](#) (14:05)

Vs.

- Theories – based on assumptions
- Media bias – dramatizing extremes
- [NIWA missing data](#)
- IPCC data based on flawed data



An Audit of the Creation and Content of the HadCRUT4 Temperature Dataset

John McLean, PhD
October 2018

70+ Issues with HadCRUT4 data

✓ First ever audit finds
the data cannot be
trusted

- HadCRUT4 is primary dataset used by IPCC to make – it's dramatic claims about “man-made global warming”
- Used to justify demands for trillions of \$ to be spent on “combating climate change”
- Basis for Paris Climate Accord

Scientists Denying Man Made Climate Change

Air Con by Ian Wishart

[“More than 31,000 scientists have signed a petition denying that man is responsible for global warming”](#) – Britain’s Daily Telegraph 30th May 2008

- McLean says creation of just 53 people – this is the 2500 IPCC consensus.



[46 ‘Climate Change Denying’ Statements Made by Former IPCC Scientists](#)





<https://www.forbes.com/sites/larrybell/2013/02/05/in-their-own-words-climate-alarmists-debunk-their-science/?sh=2a6788f568a3>

Forbes

or has not been detected.

In other words, these guys, several of whom you will hear from later, can't say with confidence whether or not humans have had any influence at all...or even if so, whether it has caused warming or cooling!

IPCC official Ottmar Edenhofer, speaking in November 2010, advised that: "...one has to free oneself from the illusion that international climate policy is environmental policy. Instead, climate change policy is about how we redistribute de facto the world's wealth..."

The late Stephen Schneider, who authored *The Genesis Strategy*, a 1976 book warning that global cooling risks posed a threat to humanity, later changed that view 180 degrees, serving as a lead author for important parts of three sequential IPCC reports. In a quotation published in *Discover*, he said: "On the one hand, as scientists we are ethically bound to the scientific method, on the other hand, we are not just scientists, but human beings as well. And like most people, we'd like to see the world a better place, which in this context translates into our working to reduce the risk of potentially disastrous climatic change. To do that, we need to get some broad-based support, to capture the public's imagination. That, of course, entails getting loads of media coverage. So we have to offer up scary scenarios, make simplified, dramatic statements, and make little mention of the doubts we might have. Each of us has to decide what the right balance is between being effective and being honest."

One Hour of Your Time!

- ✓ Responsibility and Personal Liability for our Future
- ✓ Substantially Save Costs – Massive impact
- ✓ Who are the experts you are listening to?
- ✓ This is a Major Issue – you need the real facts
- ✓ **Save** Christchurch City!

References:

- Geo Engineering – Rosalind Peterson 2007 at UN 2:40 for 3 mins
<https://www.youtube.com/watch?v=lfAPOwO6wBc>
- Prime Minister's Science Award 2011 NZ – Philip Boyd
<https://niwa.co.nz/videos/dr-philip-boyd-on-geoengineering>
- Dr John D Christy on Making Sense of Data in the Climate Change Debate
<https://www.youtube.com/watch?v=ULpGDnuz308>
- Ian Wishart on The Platform
<https://www.youtube.com/watch?v=Nbd5SlwHdo0>
- >31,000 Scientists petition
<https://www.telegraph.co.uk/news/worldnews/2053842/Scientists-sign-petition-denying-man-made-global-warming.html>
- 46 "Climate Change Denying" Statements made by Former IPCC Scientists
<https://electroverse.info/climate-change-denying-statements-by-former-ipcc-scientists/>
- Ottmar Edenhofer - Climate Change Policy is about how we redistribute de facto the world's wealth
<https://www.forbes.com/sites/larrybell/2013/02/05/in-their-own-words-climate-alarmists-debunk-their-science/?sh=62561a0a68a3>
- Putting the 'con' in consensus
<https://www.fraserinstitute.org/article/putting-the-con-in-consensus-not-only-is-there-no-97-per-cent-consensus-among-climate-scientists-many-misunderstand-core-issues>

PRESENTATION TO CCC: 6 SEPTEMBER 2023 by Susan Thorpe, St Albans

CHRISTCHURCH CITY:

CLIMATE DELUSION TO CLIMATE REALISM

. "When the facts change, I change my mind. What do you do, sir?" John Maynard Keynes

"There is this huge fraction of the population that has been brainwashed into thinking climate change is an existential threat to the planet...They are being deceived." – Princeton University Emeritus Professor of Physics William Happer, former director at US Department of Energy, at a hearing of Congress in 2023.

NET ZERO NONSENSE: 3.9.23 Brian Leyland, NZ Power systems engineer

"This leads us to a commonsense option: review man-made climate change! All the research that my friends and I have carried out demonstrates quite clearly that there is no scientific evidence based on real world data that supports the belief that man-made greenhouse gases cause dangerous global warming. None! The Climate Commission, the Royal Society of New Zealand and the IPCC all told us that they have faith in the climate models (never mind that they have never made an accurate prediction) and they rely on the "consensus of climate scientists". Consensus has no place in science because it simply amounts to "We all say so, it must be true!"

No one has been able to disprove the hypothesis that the climate changes naturally and man-made global warming plays only a small part.

Which leads to the obvious solution: abandon net zero, abandon the emissions trading scheme, stop subsidising electric cars, forget about agricultural greenhouse gases and rejoice that the increasing levels of carbon dioxide are making our plants grow better and making us all more prosperous. It would also save the billions of dollars we are squandering on a totally futile effort to change the world's climate.

CARBON TRADING FRAUD

Electrical and Mechanical Engineer Bryan Leyland has recognised the potential for fraud in carbon trading.

"So, to my knowledge, carbon trading is the only commodity trading where it is impossible to establish with reasonable accuracy how much is being bought and sold, where **the commodity that is traded is invisible** and can perform no useful purpose for the purchaser, and where both parties benefit if the quantities traded have been exaggerated. **It is, therefore, an open invitation to fraud** and that is exactly what is happening all over the world," said Mr Leyland. 21 November 2007 Brian Leyland, Electrical/Mechanical engineer

*** Indeed the NZ government itself was involved in a notorious 'hot air' carbon credits trading scandal in 2016, involving Ukraine and Russia.**

EMERITUS PROFESSOR RICHARD LINDZEN, MIT

"What historians will definitely wonder about in future centuries is how deeply flawed logic, obscured by shrewd and unrelenting propaganda, actually enabled a coalition of powerful special interests to convince nearly everyone in the world that CO2 from human industry was a dangerous, planet-destroying toxin. It will be remembered as the greatest mass delusion in the

history of the world – that CO₂, the life of plants, was considered for a time to be a deadly poison... Future generations will wonder in bemused amazement that the early 21st century's developed world went into hysterical panic over a globally averaged temperature increase of a few tenths of a degree, and, on the basis of gross exaggerations of highly uncertain computer projections combined into implausible chains of inference, proceeded to contemplate a roll-back of the industrial age."

AND

"It's hard to imagine a better leverage point than carbon dioxide to assume control over a society. It is essential to the production of energy, it is essential to breathing. If you demonise it and gain control over it, you so-to-speak, control everything...So it has a kind of fundamental attractiveness to bureaucratic mentality." 2009

"The primary role of professional societies is the lobbying of the government for special advantage"

"If I'm wrong, we'll know it in 50 years and can do something." Emeritus Professor Richard Lindzen, Atmospheric physicist, Meteorologist, MI

WORLD CLIMATE DECLARATION (August 2023)

The CLINTEL (Climate Intelligence) World Climate Declaration has been signed by 1600 scientists and professionals worldwide, including twenty three from New Zealand.

Statement: 'There is no climate emergency.

John F. Clauser, the second Nobel Laureate to sign the declaration, has publicly distanced himself from climate alarmism, and was quoted as follows:

"The popular narrative about climate change reflects a dangerous corruption of science that threatens the world's economy and the well-being of billions of people. **Misguided climate science has metastasized into massive shock-journalistic pseudoscience.** In turn, the pseudoscience has become a scapegoat for a wide variety of other unrelated ills. It has been promoted and extended by similarly misguided business marketing agents, politicians, journalists, government agencies, and environmentalists. In my opinion, there is no real climate crisis. There is, however, a very real problem with providing a decent standard of living to the world's large population and an associated energy crisis. The latter is being unnecessarily exacerbated by what, in my opinion, is incorrect climate science."

HAPPER AND WIJNGAARDEN REPORT

The summary from the recent paper by world renowned physicists W. Happer and W. van Wijngaarden.

All climate modellers work with dry air. Happer and Wijngarten have done a definitive study using normal moist air, which contradicts prior global warming hypothesis.

:

"The CO₂ Coalition of climate scientists and energy economists informs the public (1) about the net beneficial impact of carbon dioxide emissions on the atmosphere, land and oceans, and (2) the negative impact on the economy, living

standards and life expectancy of reducing these emissions by restricting access to energy."

EMERITUS PROFESSOR GEOFF DUFFY, AUCKLAND UNIVERSITY, CHEMICAL AND MATERIALS ENGINEERING

Duffy: A hundred years ago there were no weather stations on the oceans, which are 70% of the earth's surface. Only 2% of the earth even had weather stations, so how can we be sure the temperature has increased when there were no accurate measurements a hundred years ago? Climate is an average and averages don't cause anything.

CO2 is only .042% of the atmosphere, 95% of which is natural.

CO2 is 420 ppm, 399ppm of which is natural.

CO2 has been 5,000ppm in pre-history, when all life flourished.

Methane is .0002% of the atmosphere, which is infinitesimal.

Interviewer: It seems from the above figures that 5% of 0.04% is responsible for the 'climate emergency'? **How can such a tiny percentage cause an existential threat to life on the planet?**

Reality Check Radio interview June 2023

'LABOUR'S DELIBERATE DECEPTION' : Dr Muriel Newman, NZCPR. 4.9.23.

"False modelling and alarmist narratives are now so deeply embedded in New Zealand's legislative and regulatory framework, that nothing short of a major overhaul of climate policy will be able to fix it."

Dr Muriel Newman, New Zealand Centre for Political Research
Former Member of Parliament, former Chamber of Commerce President.

'GREEN MURDER' BY AUSTRALIAN GEOLOGY PROFESSOR IAN PLIMER

It has never been shown that human emissions of the gas of life drive global warming. Large bodies of science that don't fit the narrative have been ignored by IPCC, COP and self-interested scientists paid by taxpayers. A huge subsidised industry of intermittent unreliable wind and solar electricity has been created based on unsubstantiated science. The same hucksters now want subsidised hydrogen, costly inefficient EVs, subsidised mega-batteries and other horribly expensive tried and failed schemes to impoverish people, create unemployment, transfer wealth and enrich China. Germany, Texas, California and the UK had a glimpse of Net Zero with blackouts, astronomically high electricity costs and hundreds of deaths. We once had reliable cheap electricity and now that governments have gone green, we are heading for hard economic times.

In this book I charge the greens with murder. They murder humans who are kept in eternal poverty without coal-fired electricity. They support slavery and early deaths of black child miners. They murder forests and their wildlife by clear felling for mining and wind turbines. They murder forests and wildlife with their bushfire policies. They murder economies producing unemployment, hopelessness, collapse of communities, disrupted social cohesion and suicide.

They murder free speech and freedoms and their takeover of the education system has ended up in the murdering of the intellectual and economic future of young people. They terrify children into mental illness with their apocalyptic death cult lies and exaggerations. They try to divide a nation. They are hypocrites and such angry ignorant people should never touch other people's money. The greens are guilty of murder. The sentence is life with no parole in a cave in the bush enjoying the benefits of Net Zero.

Emeritus Professor Ian Plimer was professor of Mining Geology (Adelaide) and Professor of Earth Sciences (Melbourne)

NET ZERO 2050: THE STARK ECONOMIC REALITY WE FACE

New Zealander Professor Michael Kelly has done our country the favour of number crunching the reality of the United Nations' 'Net Zero by 2050' plan. Not one of the government's Climate Change Commission body's proposals is credible or achievable. The economics are impossible to achieve while still retaining any quality of life.

**'The Climate Change Commission's Advice Needs an Engineering Review'.
Professor Michael Kelly: Open letter to Prime Minister 12.7.21**

Following are some of Professor Michael Kelly's calculations:

NZ: expenditure \$600 billion on Net Zero by 2050

(NZ: expenditure \$330,000 per household by 2050)

'I have determined that the advice of the Climate Change Commission requires that three key engineering projects must be completed well before 2050:

- 1. Electrifying ground transportation.;***
- 2. Electrifying industrial, commercial and residential heat.***
- 3. Constructing a major increase (~75%) in the capacity of our electricity generation, transmission and distribution systems to provide the power needed for projects 1 and 2.***

It is my view that the Climate Change Commission's aspirations are not achievable in the time frame, may not be the most cost effective, and may not contribute to lowering global CO₂.'

Professor Michael Kelly FRS FREng: From Open letter to Prime Minister 20.7.2

Professor Michael Kelly, Emeritus Prince Phillip Professor of Technology in the University of Cambridge and former Chief Scientific Advisor to the UK Government, is a New Zealander and Fellow of the Royal Society of London and the Royal Academy of Engineering.

DR JORDAN PETERSON, EMERITUS PROFESSOR OF CLINICAL PSYCHOLOGY

VIDEO: 'Back off, Oh Masters of the Universe'

'We do not believe finally and most absolutely that your declared emergency and the panic you sowed because of it means that you should now be ceded all necessary authority,' he said. "Leave us alone, your centralizers of power, you worshippers of Gaia, you sacrificers of

the wealth and property of others, you would be planetary savers, you Machiavellian pretenders and virtue signallers. **Leave us alone.**' said Peterson in a video '.

NEW ZEALAND'S FARMING INCOME IS UNDER ATTACK

The climate industry has over the last thirty years grown into a world wide juggernaut which has permeated every institution, every education system, every government department, every district council and all mainstream media. The fervour thus generated has parallels with a religious cult, which would be laughable if the economic consequences were not so severe.

Our farmers produce 98% of the revenue of this country, but they are being bled dry by endless regulations and Government policy aligned with the United Nations' official stance on Climate Change. The UN body the IPCC has produced data which climate modellers constructed in a laboratory, however independent scientists have challenged the data as exaggerated and false.

UN climate policies are now embedded in every government agency and local authority, the Climate Commission, NIWA, the Emissions Trading Scheme etc. Our hardworking farmers are going down the gurgler due to onerous policy compliance costs.

Can you imagine a farmer sobbing down the phone in despair? This is what is happening in Canterbury, folks. Farmer suicide rates are up 17%. The anguish of our farmers is real. Media criticise farmers for 'harming the planet', which takes an emotional toll, as our hardworking farmers are some of the best in the world. The effect of endless compliance costs on the farming economy is slowly but surely destroying this sector. No farmers, no food, remember?

'Massaged' data emanating from the United Nations via its offspring, the International Panel on Climate Change or IPCC, has made fools of all of us.

Just as In the children's fairytale, The Emperor's New Clothes, we are being 'played'.

OUR COUNTRY FACING BANKRUPTCY

There is unfortunately no way to soften the message brought by some of the world's most distinguished scientists, engineers and economists as quoted above, but if councillors and officials are willing to take action, difficult though that may be in the short term, the long suffering citizens of Christchurch can be relieved of the burden of meaningless climate regulations, restrictions on movement, disturbing debt levels and the relentless doomsday Climate-geddon which daily blights out lives. The spinoff effects on our farmers will also benefit our city.

There is literally nothing more important at this point, because regulations and restrictions will bankrupt our country on the current trajectory, and we must not shrink from addressing the **'sacred cow' of climate emergency,** as the economic consequences of delay are too awful to contemplate.

It is clear that we cannot afford such expenditure, when **the most recent IMF Annual Report Card lists New Zealand in Place 159 out of 160, just ahead of Equatorial Guinea.**

CHRISTCHURCH'S HERITAGE IS IN JEOPARDY

Christchurch is a city at the bottom of the world, but founded on outstanding ethics and Christian faith, as its name announces. The founders came direct from the Oxford Group and the anti-slavery Wilberforce movement and brought with them scholastic rigour and the advanced engineering and sciences of the day, exemplified by the neo-Gothic architecture of the Museum and the original University which connect via Worcester Boulevard with the pivot point of Christchurch Cathedral.

My complacency re climate change regulations was shattered by the infringement of **an ugly 'temporary' cycle lane which dissected the gracious proportions of Park Terrace**, and this was the catalyst which forced me to wake up and come to the rescue of the city to which I owe so much, with everything at my disposal. It turns out that the bland euphemism used for this cycle lane is **'Innovating Streets for People 2019-2021'**, courtesy of **The NZ Transport Agency**. New Zealanders are seeing such 'innovation' being imposed all over the country, usually to the grave disadvantage of businesses and vehicle movement. However it is good that the CCC planners made their stance crystal clear, so as to be left in no doubt of the direction in which our city is being led by the nose, in order to comply with UN dictats.

The epicentre of the effects of this cultural assault is clearly the Museum precinct and Rutherford's Den in the former University, because they constitute the very heart of Christchurch's historic intellectual legacy.

PARALLELS WITH FAIRYTALE

There are **startling parallels with the fairytale The Emperor's New Clothes** and the climate narrative the world is experiencing, as we see ever more ridiculous edicts and 'statistical noise' emanating from United Nations level, and which compliant officials impose upon populations as they work 'in lockstep' with new regulations. **People have learned not to question the narrative, otherwise risk either being ridiculed or threatened with job loss.**

We have seen this principle in operation recently with the **public shaming** of two politicians who have **dared to question climate change mythology**. Both were pressured to retract their position,

And the swindlers in the fairytale? They were laughing all the way to the bank. As always, 'Follow the money.' And there is plenty of that sloshing around in today's Climate circles.

WE STAND ON THE SHOULDERS OF GIANTS

Wherever CCC officials sit on the spectrum, whether **they trustingly believed the rhetoric, as have most of us at one time or other**, or whether they felt powerless to question anything, the prerequisite now, upon assessing **the impeccable science which I have made available to you today, from scientists and engineers with distinguished reputations**, is to **acknowledge and correct falsely premised climate policy** in order that society as a whole can reclaim common sense and the very integrity of science itself, which latter has clearly been severely damaged by the Climate Delusion.

These are profound challenges, but **we the people of Christchurch, led by that great body, the Christchurch City Council, will emerge stronger from resolutely reclaiming the integrity**

of scientific discipline in this city, as demonstrated by Canterbury's most famous 'son' - Lord Ernest Rutherford.

Christchurch was not a city founded on deception or falsification of scientific data.

So what do we do about it?

A BOLD AND HONOURABLE STRATEGY

Just like the child in the fairytale who innocently told the truth, I ask you to consider that Christchurch is eminently qualified to be the **first city in the world to totally renounce the false climate narrative.**

'The Emperor has no clothes' thus becomes 'There is no climate emergency.'

From the hallowed halls of the physics lecture room near Rutherford's Den, **Canterbury University College produced arguably the top physics student on the planet.** The science Rutherford used was rock solid, and meticulously accurate.

In Christchurch we truly stand on the shoulders of giants.

How symbolic if Christchurch were to give the world another gift which is the exact opposite, but, it could be argued, of similar scale and significance. **Christchurch is in the unique position, by starting a cascade of downstream effects, to rid the world of a scientific delusion so gargantuan, so destructive, so dishonest, and so inimical to the integrity of the science which Rutherford represented,** that we would expect to see an equal and opposite reaction when this happens.

Rutherford batted a world-winning game with nuclear physics research. **Christchurch cannot; following Rutherford's 'stratospheric' legacy, refuse any longer to allow corrupted science to despoil the very fabric of our city, and from these shores 'return to sender' the fake and corrosive climate hypothesis from whence it came.**

If no other cities or countries follow Christchurch's example, that is their call. We will still sleep better at night for our decision.

But we will need to hold tight to our love for this city, because we can expect the consequent 'reaction' on the world stage to be major.

IN YOUR HANDS

If the Council were to decide not to **face up to the climate fraud and banish it from policy,** then 'wokeism' will increasingly weaken our once-proud city, and the consequences for our beloved Christchurch will not be pretty. We can expect to see the city 'sliced and diced' with cycle lanes, intensified with garageless 'chicken coops', driven to distraction with 'traffic calming', our speed reduced to a crawl, our efficient systems disrupted and our streets in disrepair. At the macro level we will see Canterbury landscapes proliferated with ever more

'carbon forestry' and rusting solar and wind farms, and our farmers driven off the land, while the efficient energy systems which have made life bearable for all will be banned by climate zealots.

All this in the name of the beautiful, life giving gas CO2, which comprises only .042% of the earth's atmosphere.

You couldn't make it up.

THE DEFINITIVE RESEARCH

Some of the New Zealand scientists and engineers whose work I have quoted (and one Australian professor), may be persuaded to speak either in person or electronically to a session of the Council, so that councillors may benefit from hearing direct from these reliable and honest voices - **accurate, peer reviewed climate science which stands up to scrutiny**. It would be difficult to imagine a more urgent matter in the scheme of things, with **such mind-boggling 'debt' hanging over our collective heads** like the sword of Damocles.

This theoretical future 'climate' debt can be scrapped if the council acknowledges there is no climate emergency, which is the good news these scientists and engineers can bring to the table. It is most likely that they would welcome the opportunity to shine light into the darkness of this subject.

Our beautiful city of Christchurch, more than ever before in its history, needs our loyalty, courage and prayers at this time if it is to retain its illustrious heritage going forward into the future.

CLIMATE REALISTS

NZ Professor Michael Kelly

NZ Bryan Leyland

NZ Barry Brill

NZ Professor Geoff Duffy

Aus Professor Ian Plimer

NZ Dr Jock Allison

NUMBER CRUNCHING

Below are some of the **amounts we already pay or will be expected to pay**, in order to 'atone for our carbon sins', reminiscent of the medieval world 'paying indulgences to the Pope!'

- * **\$1.4 billion dollars a year to the Paris Accord (current)**
- * **In the region of \$25 billion by 2030 for carbon credit 'offshore mitigation'**
- * **270 Trillion globally to remake the world to Net Zero by 2050**
- * **Humanity must remove 660 billion tonnes of CO2 from the atmosphere by the end of the century. IPCC Report 2023.**

New Zealand cannot afford these eye-watering sums for bat-crazy schemes, at the expense of the essential spending of the economy, and the payments are just as likely to disappear into 'thin air'. Indeed **the NZ government was involved in a notorious 'hot air' carbon credits trading scandal in 2016.**

SCIENTIFIC REALITIES

NZ's share of global emissions is 1.17%.

CO2 is only .042% of the atmosphere, 95% of which is natural.

CO2 is 420 ppm, 399ppm of which is natural.

CO2 has been 5,000ppm in pre-history, when all life flourished.

Methane is .0002% of the atmosphere, which is infinitesimal.

Human activity CO2 therefore represents 5% of 0.04%:

It stretches credulity that this amount could cause a Climate Emergency, yet this is the mythology with which we are daily bombarded by government and media.

MASS FORMATION PSYCHOSIS

The climate hysteria which has been observed appears to be Mass Formation Psychosis, a syndrome described by Professor Matthias Desmet of Ghent University, by which people, if they hear false information often enough will believe it, especially if it has supposed scientific backing.

The fervour generated by climate alarmism also has parallels with a religious cult.

THE ECONOMICS OF GOVERNMENT CLIMATE POLICY

CRIPPLING CLIMATE DEBT AHEAD

In New Zealand we already send **\$1.4 billion dollars a year to the Paris Accord.**

But this amount pales into insignificance when faced with recent Treasury reports which quote eye-watering figures.

For instance,

According to the Climate Economic and Fiscal Assessment 2023 report, released by Treasury in April, the cost of meeting Labour's climate commitments by 2030 are a "significant fiscal risk". With offshore carbon mitigation likely to be needed to meet up to *70 percent* of our climate targets, the cost could be **in the region of \$25 billion** – or *#28 percent* of the new operating expenditure that will be made available through Budgets 2023 to 2030." report

So some CCC officials may continue to 'believe' that there is a climate emergency, but the hard cold fact is that our city and our country **cannot afford the unbelievable drain on our economy of climate change regulations**, whether valid or not, for some mythical future temperature reduction. Economist Bjorn Lomborg has calculated that result to be less than one degree by 2100.

However it is becoming increasingly problematic to blind ourselves to the fact that the **climate emergency rhetoric is without factual basis**, despite millions of jobs having been fabricated in the pursuit of hypothetical climatic results.

MEDIA

,

Stuff accepts the overwhelming scientific consensus that climate change is real and caused by human activity. We welcome robust debate about the appropriate response to climate change, but do not intend to provide a venue for denialism or hoax advocacy. That applies equally to the stories we will publish in **Quick! Save the Planet** and to our moderation standards for reader comments.

NZCPR Weekly: Labour's Deliberate Deception, by Dr Muriel Newman

'Given the significant influence the media has on public opinion, the revelation that Laour has been paying media companies (\$500,000 in 2022) to promote their climate agenda in such a way that it appears like news instead of advertising, raises serious questions about the integrity of the media.'

CARBON CAPTURE

Authorities can capture all the CO2 they want, but oh there may be a small problem which the climate zealots have overlooked. **Oxygen is a by-product of CO2 and photosynthesis!** However New Zealand has already had a serious offer from a 'carbon capture firm' to remove a million tonnes of CO2 a year for \$100 a tonne.

But the IPCC is right alongside with that idea.

'Nevertheless, a major IPCC report earlier this year says humanity must [remove 660 billion tonnes of CO2 from the atmosphere](#) by the end of the century.'

Unfortunately it has been pointed out that New Zealand bureaucrats are often eager to be 'first off the block' in virtue signalling to the world re climate regulations, the problem being that our farmers are the scapegoats of this fervour, and this tendency has already proved very costly, although having diddly-squat positive outcomes. Why is New Zealand sacrificing key priorities in order to do more than "our fair share"^[5] in Climate Policy?

METHANE IS NEGLIGIBLE AT .0002%

Scientists who have brought recent research findings to the climate minister, showing methane to be less by a factor of three, have had **no response from him** or the Ministry for the Environment, despite the fact that the lowered levels would **save at least \$2 billion annually**.

The **methane component at .0002% is negligible**, yet the relentless demonising of ruminant agriculture by government and media is that methane is an existential threat to the planet and requires farmers to be taxed for 'methane emissions'. Indeed, in 2021 New Zealand joined 153 countries in signing the **Global Methane Pledge**:

'Delivering on the Global Methane Pledge is estimated to reduce warming by at least 0.2 degrees Celsius by 2050. Scientists normally compare the warming effects of methane and carbon dioxide over one century, and over that timescale methane is 28 times worse. Over 20 years, however, methane is 80 times worse, according to recent research.' **Reuters**

Where is the cost benefit analysis for wasting our farmers' time on a manufactured 'problem', with the miniscule 'result' of lowering the temperature by 0.2 degrees by 2050? Why tie our farmers up in knots over this, and **how can methane be 80 times worse than CO2 when it is .0002% of the atmosphere?**

REF CLIMATE PSEUDOSCIENCE SCANDALS

'There have been scandals amongst academics when climate pseudo science has received public attention. **'Climategate'** was a landmark example which had major repercussions, when false data was exposed in 2009 at the Climatic Research Unit (CRU) of the University of East Anglia. REF

In New Zealand, independent scientists exposed inaccurate national temperature records emanating from NIWA, and which had been provided to the NZ Cabinet.

UNITED NATIONS: NET ZERO BY 2050

It will cost 270 Trillion to remake the world to Net Zero by 2050.

Net Zero by 2050 will globally cost more than \$5 trillion a year for the next thirty years, and **insane amounts like 'quadrillions' are being talked about.**

The launch of the IPCC thirty years ago has created a vast industry of renewables, carbon credit trading, carbon forestry, research funding and a huge cohort of policy compliance officials. Most of the research has been government funded, i.e. paid for by the public.

American Climatologist Professor Judith Curry has described the process by which the new 'climate mythology' evolved. Highly paid **policy makers were tasked with manufacturing a consensus of scientists** to validate politically agreeable solutions, and scientists were selected to author the IPCC reports, which were then promulgated via multiple layers of administration and media. **Note that the policy preceded the science.**

UTOPIAN 'SMART' CITY PLANS

To give us an idea of what 'utopia' being planned for humanity would look like in the quest to 'save the planet', here are a few of the concepts already under discussion.

Fifteen minute cities/ Climate Leadership Cities

C40 Smart Cities

One domestic flight allowed every three years

No private car.

Three new garments a year.

No meat or dairy.

2,500 calorie daily allowance.

The C40 Cities Climate Leadership Group, is **a network of 97 of the world's largest cities, representing more than 650 million people, to share knowledge and collaborate on efforts to fight climate change.**

Carbon Equivalent Units: products will be tracked from mining to landfill.

CHRISTCHURCH CITY: CLIMATE EMERGENCY DECLARED

Christchurch City declared a Climate Emergency in 2019. **But we need to sort out our present, not the distant future.** We have seen many predictions which have not come to pass, like New York being underwater by the year 2,000. In fact, **not one of the Armageddon predictions has come true.**

CCC debt is already \$2.66 billion, which is 20c in every dollar of our rates, so clearly it would be wise to abandon the escalating 'carbon costs', or **all Christchurch's amenities will take a back seat to the 'carbon mirage'.**

Can we afford such expenditure, when **the recent IMF Annual Report Card lists New Zealand in Place 159 out of 160, just ahead of Equatorial Guinea.**

CLIMATE PLEDGES, AGREEMENTS AND ACTS

Here are a few which have already been by implemented in New Zealand:

The Kyoto Protocol

The Paris Agreement 2015

Net Zero Carbon 2030

The Net Zero Emissions by 2050 Scenario (NZE)

Climate Change Adaptation Act

The Climate Change Response (Zero Carbon) Amendment Act 2019

Climate Change Response Act

Severe Weather Emergency Recovery Legislation Act

Global Methane Pledge 2021

STGs

DEIs

ESGs

METHANE

The cost of ignoring the real science of methane is \$2 billion annually. Can we afford to get that wrong?

What have we done with our \$200 million of research money? Oh yes, poured in another \$338 million because the previous research is going nowhere. Farmers are paying, and fifteen years of costly 'ruminant methane emission research' have produced nothing.

All climate modellers work with dry air. Happer and Wijngarten have done a definitive study using normal moist air, which contradicts the global warming hypothesis.

NZ: One thousandth of world's methane emissions.

Scientists who have brought these findings to **the climate minister** have had no response, despite the fact that the modified data would save our country at least \$2 billion annually, as the 'science is clearly not settled.'

POLITICIANS RETRACT QUESTIONS / OPINIONS

Maureen Pugh of the National Party was recently attacked and publically shamed for even questioning the Climate narrative. She was later forced to retract or face consequences.

'Her remarks were [immediately disowned by the leadership](#), who said there was no place for climate deniers or minimisers in the caucus.'

The same thing happened to Mark Cameron of ACT.

Seymour said Cameron doesn't believe climate change is a hoax.

"I made stupid remarks as an individual that I don't believe to be true."
1news.co.nz/2023/08/29

WORLD CLIMATE DECLARATION

John F. Clauser, the second Nobel Laureate to sign the declaration, has publicly distanced himself from climate alarmism, and was quoted as follows:

"The popular narrative about climate change reflects a dangerous corruption of science that threatens the world's economy and the well-being of billions of people. Misguided climate science has metastasized into massive shock-journalistic pseudoscience. In turn, the pseudoscience has become a scapegoat for a wide variety of other unrelated ills. It has been promoted and extended by similarly misguided business marketing agents, politicians, journalists, government agencies, and environmentalists. In my opinion, there is no real climate crisis. There is, however, a very real problem with providing a decent standard of living to the world's large population and an associated energy crisis. The latter is being unnecessarily exacerbated by what, in my opinion, is incorrect climate science."

FARMING

2019 Jacinda Ardern told the UN that we are the first country on the planet to legislate the UN sustainable development goals.

Article 2 of Paris says don't reduce agricultural productivity for climate measures.

Scott Evans is a farmer and chair of Waimakariri Next Generation - a group set up to support young farmers and lobby for change.

"You get guys ringing up in tears that are about to lose their family farm, because there is no way they can make these changes..." Mr Evans said.

Every farmer will have to measure the carbon auditing. Emissions from every sheep and cow will be traceable to every consumer. Supposedly the big chains will not buy our farm products unless we prove our carbon audits, however they continue to buy from the Chinese who do not comply whatsoever with climate regulations.

Aladdin quantum computer quantifying with algorithms the carbon equivalent unit for every single resource, every single asset, every single product on the planet. Farmers can use the Greenhouse gas equivalencies calculator to calculate animal emissions.

BLACK ROCK CLIMATE PARTNERSHIP FUND

\$2 billion Black Rock Climate Partnership Fund signed with NZ government.

This is the first of its kind to be funded & owned by private interests. Government will give them a good deal or they would not be interested.

There is a government roadmap for energy transition. Renewables are risky. ETS subsidises renewables by making fossil fuels more expensive, renewables less expensive. Black Rock have a set of incentives which make them inappropriate owners of physical assets on which people rely day to day.

(Black Rock already manages NZ superannuation and some KiwiSaver funds.)

REFERENCES

www.nzcpwr.com Dr Muriel Newman, 'Labour's Deliberate Deception'
http://www.bryanleyland.co.nz/uploads/2/9/7/1/29710909/global_warming_a_modern_davy_myth_dompost_dec_11.pdf

Dr Bryan Leyland : Zero carbon dream and reality:

<https://www.nzcpwr.com/net-zero-nonsense/> Dr Bryan Leyland, NZ Power systems engineer

<https://clintel.org/wp-content/uploads/2023/08/WCD-version-081423.pdf>

THE WORLD CLIMATE DECLARATION

<https://www.youtube.com/watch?v=c3ZfutRL4Es> Catastrophic global warming predictions
rubbished National News TVNZ Bryan Leyland

<https://realitycheck.radio/prof-geoff-duffy-on-why-water-vapour-is-a-dominating-player-in-our-atmosphere/>

https://skepticalscience.com/skeptic_Richard_Lindzen.htm CLIMATE MISINFORMATION BY
SOURCE Emeritus Professor Richard Lindzen, atmospheric physics and meteorology, MIT

<https://realitycheck.radio/judith-curry-president-and-co-founder-of-cfan-climate-scientist-and-author-on-why-the-climate-change-crisis-narrative-is-a-manufactured-consensus/>

<https://www.eco-business.com/news/nz-government-embroiled-in-carbon-credit-scandal/>

<https://www.greenpeace.org/aotearoa/press-release/organised-crime-scandal-shows-nzs-climate-policy-is-a-total-bloody-waste-of-time/>

<https://www.rnz.co.nz/news/political/402250/ringing-up-in-tears-canterbury-farmers-doing-it-tough>

<https://www.newshub.co.nz/home/politics/2023/02/national-mp-maureen-pugh-repeatedly-refuses-to-say-she-believes-in-man-made-climate-change.html>

<https://www.1news.co.nz/2023/08/29/seymour-says-act-mp-no-longer-believes-climate-change-a-hoax/>

https://www.youtube.com/watch?v=-QS_UyW2SY Back Off, Oh Masters of the Universe: Dr
Jordan Peterson, Emeritus Professor, Clinical Psychology, Toronto University

<https://www.odt.co.nz/news/politics/hide-claims-niwa-misled-cabinet-over-temperature-rise>
<https://breakingviewsnz.blogspot.com/2021/07/professor-michael-kelly-open-letter-to.html>

<https://fyi.org.nz/request/18230-total-expenditure-on-meeting-nz-climate-target#incoming-70386> Barry Brill

<https://newsline.ccc.govt.nz/news/story/christchurch-city-council-declares-climate-emergency>

<https://www.rnz.co.nz/news/national/479711/carbon-capture-firm-wants-to-remove-millions-of-tonnes-of-co2-from-the-air-in-new-zealand>

<https://www.ruralnewsgroup.co.nz/rural-news/rural-opinion/science-behind-ets-needs-a-reassessment> Dr Jock Allison

<https://www.beehive.govt.nz/release/nz-joins-global-initiative-tackle-methane>

<https://www.1news.co.nz/2023/08/13/reason-for-caution-over-blackrock-climate-investment-expert/> / Uppsala University Prof Brett Christophers

<https://www.scoop.co.nz/stories/PO0911/S00282/niwa-adjusts-records-to-show-warming.htm>

<https://www.stuff.co.nz/environment/climate-news/79031600/government-allowed-climate-fraud-to-reach-emission-reduction-targets-report>

<https://www.ruralnewsgroup.co.nz/rural-news/rural-opinion/emissions-research-a-black-hole>

<https://apnews.com/article/science-technology-health-genetics-business-9158daf46020a1b1267db63413e8e8fd> Methane reduction ruminant research

<https://www.nzta.govt.nz/roads-and-rail/streets-for-people/innovating-streets-for-people-2019-2021/>

Climate Economic and Fiscal Assessment 2023 [report](#) Treasury

<https://www.nzherald.co.nz/nz/climate-change-nz-could-face-24-billion-bill-to-hit-2030-international-paris-agreement-targets-in-carbon-credits-officials-warn/HPCLSJELQZABFJ3FZ6JLUZK7IM/>

<https://www.epa.gov/energy/greenhouse-gas-equivalencies-calculator>

<https://www.c40.org/>

<https://www.stuff.co.nz/opinion/131318764/aucklands-place-among-climate-leading-cities-is-in-peril>

<https://www.c40.org/cities/auckland/>

<https://www.rnz.co.nz/news/national/479711/carbon-capture-firm-wants-to-remove-millions-of-tonnes-of-co2-from-the-air-in-new-zealand> CARBON CAPTURE

<https://www.researchprofessionalnews.com/rr-news-world-2022-1-researchers-seek-global-ban-on-sun-dimming-technologies/>

PUBLIC FORUM SUBMISSION to the CHRISTCHURCH CITY COUNCIL

Subject: Council Support for Blue September - Prostate Cancer Awareness/fundraising Campaign.

Presented by: David Lynch, Momentus Public Relations Ltd

Wednesday 5 September 2023

Introduction

Thank you for the opportunity of allowing this submission today.

My name is David Lynch and my attendance today is in my capacity as a director of Momentus Public Relations.

Over the past 25 years, Momentus Public Relations has been dedicated to pro bono patient and health advocacy, offering not only our time and expertise but also financial support to those in need.

We have helped patient and health advocacy groups achieve their communication and advocacy goals, which has included things like raising awareness about specific health issues, advocating for policy changes, and supporting patients in their healthcare journeys.

Some of support initiatives have included:

- Providing advice to a burn's victim from Hawkes Bay.
- Advocating for Kris Karstens, who faced difficulties in receiving a necessary surgical procedure for a significant twisted bowel issue.
- Arranging and participating in a briefing by Professor Frank Frizelle to the Christchurch City Council, addressing the ongoing healthcare crisis in New Zealand and its effects on patient care and healthcare staff.
- Extending guidance and assistance to several patients in the Burwood Hospital Spinal Unit.
- Backing Professor Maan Alkai, the Spokesperson for the CTV Families Group representing the 115 lives lost when the building collapsed during the February 2011 earthquake.

Momentus PR support for Blue September - Prostate Cancer Awareness/fundraising Campaign

Blue September is the Prostate Cancer Foundation's annual awareness and fundraising campaign, which is seeking to directly help eliminate deaths and suffering from prostate cancer.

I have chosen to contact: clients, individuals, and groups, requesting assistance in utilising their Social Media Channels and Platforms (such as Facebook, YouTube, WhatsApp, Instagram, TikTok, Snapchat, Pinterest, Reddit, LinkedIn, and Twitter) to grow the awareness for this important cause.

My aim is to have them share a link to the Blue September Prostate Cancer Awareness site, encouraging them to motivate their friends, colleagues, clients, and followers to back the campaign and consider donating.

About Prostate Cancer (Quote: Dr Stephen Mark, FRACS, Urologist)

"Prostate Cancer is the most commonly diagnosed cancer in NZ with > 4000 men diagnosed per year, and over 800 deaths attributed. Also, prostate cancer is the most expensive cancer for health care system

Over 10,000 men per year sent for specialist assessment and diagnosis to specialist Urologist with suspicion of prostate cancer. PSA blood test is very helpful in early diagnosis, important for men to "TALK with their GP."

Early accurate diagnosis leads to improved treatment and best cancer outcomes."

Dr Stephen Mark, FRACS |Urologist

Urology Associates |Christchurch Hospital |CURT
CHOMNZ |Clinical Lead, NZ Prostate Registry
Trustee BJUI

Opportunities for Mayoral and Councillor Support

Local Governments are uniquely positioned to address the specific needs of their communities and play a vital role in promoting and supporting the health and wellbeing of their residents through various programs, services, and initiatives. Momentum PR has produced a banner for the Mayor to use over the month of September to help promote prostate cancer awareness campaign and also to encourage Christchurch businesses and individuals to donate to this important cause. (reveal banner and have delivered to Mayor)

Highlight on the banner the Blue September webpage link for people to donate.

Advise all Councillors that they will receive a copy of the Blue September banner to place on their Facebook page. This will have a hyperlink for people to donate.

Fundraising challenge: Mayor's \$10,000 Target with Phil visiting businesses with banner and wearing something blue and a photo is taken the business visited will donate \$1000 to the Prostate Cancer Foundation NZ.

Announce first business: Tunnel Wash - The Quickest, Cleanest, Greenest Car Wash in New Zealand will donate \$1000 when the Mayor visits one of their locations where a photo will be taken with the owner.

Challenge for the Mayor to encourage other business to do the same.

Mayor to contact all other Mayors up and down the country, suggesting they should back this worthwhile cause.

Before inviting the Mayor to say a few words of response read out quote.

Mention at the conclusion of the Mayor's response we have organised a photo opportunity for the Mayor, Deputy Mayor, and all Councillors (various props used in photo including blue ribbon to link all elected members

Before inviting the Mayor to say a few words of response read out quote.

QUOTE

In concluding, I would like to dedicate this quote to all those males, their families and loved ones, currently confronting prostate cancer.

Strength is not the absence of fear, but the courage to face it head-on. We are stronger than fear, and with each day, and with the right attitude, we have the potential to be one step closer to victory.

David Lynch 6.09.2023

Thank you

David Lynch
Momentum Public Relations Ltd
Po Box 36321
Christchurch
New Zealand
Ph: [REDACTED]
Mobile: [REDACTED]
E-mail: [REDACTED]

Streets for People - Gloucester Street

Christchurch City Council, Weds 6th Sept 2023

Public Forum presentation by

Simon Kingham

Professor of Geography, University of Canterbury

Chief Science Advisor, Ministry of Transport

Try Before You Buy

Tactical urbanism

- an approach to neighborhood building and activation using short-term, low-cost, scalable interventions and policies

Five characteristics

1. A deliberate, phased approach to instigating change
2. The offering of local solutions for local planning challenges
3. Short-term commitment as a first step towards longer-term change
4. Lower-risk, with potentially high rewards
5. The development of social capital between citizens and the building of organizational capacity between public and private institutions, non-profits, and their constituents

Lydon et al, 2012. Tactical Urbanism Short-term Action Long-term Change Volume 2. The Street Plans Collaborative. https://issuu.com/streetplanscollaborative/docs/tactical_urbanism_vol_2_final

Reshaping Streets

- Land Transport Rule: Street Layouts 2023 (21st Aug 2023)
- Street Pilots
 - *enable councils to pilot, or make short-term changes to streets, to **test different street layouts** and features. This **allows communities to experience these changes in real time and provide feedback**.*
 - ***allow communities to be more involved** in the process of changing their streets and for continual improvement of the design while it's in place.*
 - *provides councils the ability to **consult while the pilot is in place***

<https://www.nzta.govt.nz/walking-cycling-and-public-transport/reshaping-streets/>

Consultation and engagement

- People don't like change
 - Especially something new and different, something they can't imagine
- Allows communities to experience changes and provide feedback
- This is a better way of engaging
- This is the new way of engaging

Making Streets People Friendly isn't novel





New York City

<https://ny.curbed.com/2017/4/19/15358234/times-square-snohetta-before-after-photos>



New York City

<https://ny.curbed.com/2017/4/19/15358234/times-square-snohetta-before-after-photos>



New York City



<https://ny.curbed.com/2017/4/19/15358234/times-square-snohetta-before-after-photos>

Buenos Aries

<https://www.bloomberg.com/news/articles/2016-03-30/photos-of-the-world-s-best-street-designs-mapped>



Bucharest



<https://www.bloomberg.com/news/articles/2016-03-30/photos-of-the-world-s-best-street-designs-mapped>

Auckland

[https://content.aucklanddesignmanual.co.nz/resources/case-studies/street fort street precinct/Documents/ADM%20Case%20Study%20Fort%20Street%20Precinct%20Auckland.pdf](https://content.aucklanddesignmanual.co.nz/resources/case-studies/street%20fort%20street%20precinct/Documents/ADM%20Case%20Study%20Fort%20Street%20Precinct%20Auckland.pdf)



<https://www.stuff.co.nz/life-style/home-property/72930841/shared-space-lifts-fort-street>

Hamilton!

<https://www.bloomberg.com/news/articles/2016-03-30/photos-of-the-world-s-best-street-designs-mapped>



Christchurch

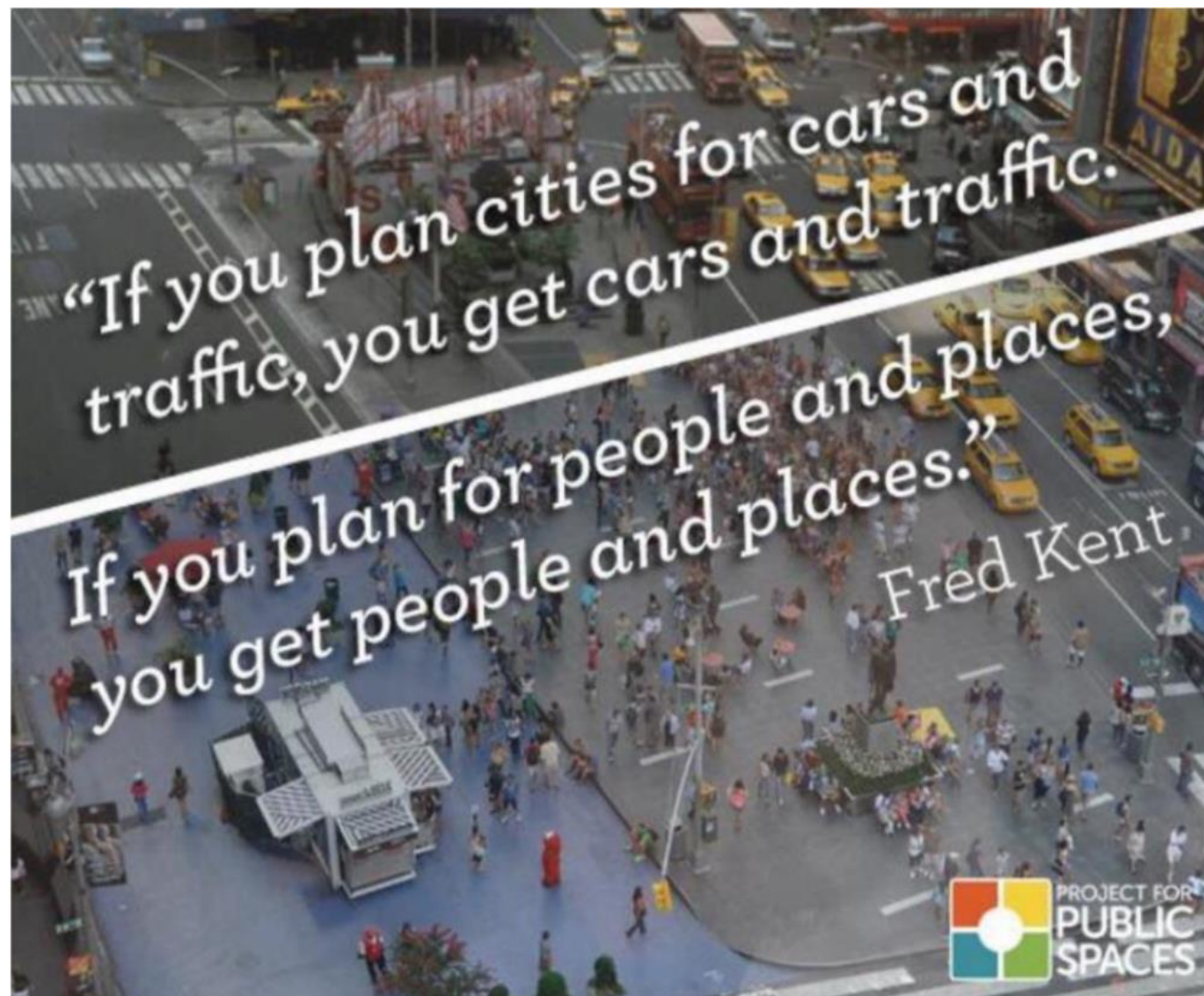


Final comments

- Streets for People (e.g. Gloucester St) allow communities:
 - to *experience these changes in real time and provide feedback.*
 - *to be more involved*
- Christchurch is a great city to live in
 - Reputation for innovation e.g. Gap Filler, Life in Vacant Spaces, Greening the Rubble
- Let's keep going
 - Let's try interesting progressive *People Focused* Tactical Urbanism projects

Thanks

Any questions?



Waihoru Spreydon-Cashmere-Heathcote Community Board Report to Council

Te kaipāhō (Presenters):
Callum Ward, Chairperson
Keir Leslie, Deputy Chairperson



Local Matters

Opening of Hoon Hay Community Centre



2023-2024 Strengthening Communities Fund



Part A Report to Council

Dedication of Local Purpose (Road) Reserve as road - 189R Worsleys Road



Community Board Plan

South Library and Service Centre rebuild



Thank you

Waimāero Fendalton-Waimairi-Harewood Community Board

Report to Council – 6 September 2023



Presenters: Bridget Williams (Chair) and Jason Middlemiss (Deputy Chair)

Decisions made under delegations

- Approved the urban forest planting plan for Jeffreys Reserve, Fendalton
- Approved No Stopping Restrictions on Greystoke Lane, Avonhead
- Approved 64 grants from our 2023/24 Strengthening Communities Fund
- Approved our Board Projects funding for the coming year including Celebrate Bishopdale and Culture Galore events
- Approved a Youth Development Fund application from Burnside High School to send nine Year 10 students on the Spirit of Adventure Voyage

Public Forum

- Received a Public Forum from two local residents regarding a tree in Otara Reserve, Fendalton

Bryndwr Banter

A new community newsletter has been created for all residents in the Bryndwr area.

With support from our local Community Development Adviser, Natalie Dally, a number of community groups have come together to collaborate on the project with the aim of providing information to residents about local projects and support services available.

A calendar of local events and activities was also included as part of the mailbox drop.

The next edition is currently being compiled and due to go out in November.



Kāinga Ora Housing Developments

Like many suburbs across the city, we are seeing new Kāinga Ora developments happening in our Board area. Three significant ones are in Belfast, Burnside and Bryndwr.

Our local Community Governance staff have developed a good relationship with Kāinga Ora staff which is resulting in improved engagement with local groups and residents.



What Matters Most – early LTP engagement

Local Community Governance Team staff held a number of sessions with local community groups to gather their early ideas and feedback for the Long Term Plan.

We received very positive feedback from participants regarding the interactive way of engaging with residents.



Keep Christchurch Beautiful Awards

Our Board was pleased to nominate the **Friends of Crosbie Park** group for an award this year and were excited to hear that our nomination was successful.

Representatives from the group attended a function at Tūranga on 15 August to receive their certificates.



Thank you!

Waipapa Papanui-Innes-Central Community Board

Report to Council for September 2023



Presenters: Emma Norrish and Simon Britten
6 September 2023

Decisions made under delegations

▪ Public Forum

- Dave Gardner – ‘Desire Paths’ in Lewisham and Rutland Reserves
- Max Hammett – Youth Development Report Back

▪ Deputations

- Jude Wastney – Pavitt Street – Proposed No Stopping Restrictions

▪ Reports to the Board:

- Community Parks Urban Forest Planting Plan
- Pavitt Street – Proposed No Stopping Restrictions
- Moa Place – Proposed No Stopping Restrictions
- Innes Road street renewal (Mersey Street to the shops past Philpotts Road)
- Road Stopping at 39 Hendon Street, St Albans
- 2023-24 Strengthening Communities Fund
- Waipapa Papanui-Innes-Central Community Board Area Report



2023-24 Strengthening Communities Fund

The Board made grants to 39 groups, contributing to the principle of strengthening communities together. A sample of the feedback received from the recipients who were granted funding is shown here:

"Thank you so much for the grant and for partnering with us"

"On behalf of everyone at the Trust, we are so grateful to the Board for their financial support. This funding will make a real difference to the lives of disadvantaged people in our local community"

"Our sincere thanks to the Community Board and CCC team for supporting our application this year. We know there has been a huge demand for funding for groups as we all struggle with rising costs and try to maintain services. This grant will be well used to support our work in the community"

"Thank you for supporting us in our mahi into our community"



Decisions made under delegations

▪ Discretionary Response Fund allocations:

- \$781 to St Albans Residents' Association towards the Predator Free St Albans – Rat Trap Project
- \$500 to Patch 'n Judy towards the Quilts for Charity Project
- \$28,200 for Board Projects – Summer with your Neighbours, Youth Recreation Project, Community Liaison, Community Pride Garden Awards, Positive Youth Development Fund, Community Service Awards



▪ Youth Development Fund allocations:

- \$500 to Max Haines towards travel costs and expenses as part of the NZ U15 Indoor Cricket Team competing in the World Series in Dubai, UAE.

Community Liaison

Edible and Sustainable Garden Awards 2023 – certificates were presented to the MacFarlane Park Children's Gardening Club and the Kadavu Community Gardens.



Community Liaison

The Northwest Sports Recreation Community Hub held a meeting which provided a valuable platform to engage the community.

The contributions made during this and the next two meetings will be pivotal in shaping the forthcoming strategic plan to create a dynamic and inclusive sports and recreation environment within the Northwest area.



Community Board Plan

Revitalisation of Petrie Park

The Board received a presentation on the community mahi in relation to the Revitalisation of Petrie Park.

We Are Richmond held a community BBQ and engagement session at Petrie Park earlier in the year.

The vision is that the southern half of the park undergo a land use change from bowling green to a park that best serves the local community and biodiversity. The future use of the park will be developed, and a landscape plan will be made using a community development approach.



Thank you!

Waipuna Halswell-Hornby-Riccarton Community Board Report to Council – 6 September 2023

Te kaipāhō (Presenters): Helen Broughton, Chairperson
Marie Pollisco, Deputy Chairperson



1

Decisions made under delegation

Reports to the Board:

- Athol/Waimairi Safety Improvements
- Waterloo Road - Additional speed hump
- 2023-24 Strengthening Communities Fund
- Community Board Projects 2023-24
- Community Board Youth Development Fund – Delegation
- Discretionary Response Fund applications – Patch ‘n Judy and Hei Hei Broomfield Community Development Trust

Part A being considered at this meeting:

- Athol/Waimairi Safety Improvements



What Matters Most



The What Matters Most community engagement initiative finished on 15 August, as a pre-engagement exercise seeking input to inform the 2023-2034 Long Term Plan. Board Members and Community Governance staff facilitated and/or supported over 20 events within the Community Board area. This included engagement at community venues, libraries, shopping centres, community meetings and a retirement village.

3

Get Active Sports



Epic Sports provide Get Active Sports in Wycla and Harrington Parks on Mondays and Fridays respectively as well as Hip Hop classes at Hornby Salvation Army.

The Riccarton project contributes to the Board's Community Board Plan Riccarton priority of providing things for young people to do.

Matariki Celebrations

Community-led events to celebrate Matariki were organised within the Templeton, Hornby and Riccarton communities.

The three libraries in the ward, Te Hāpua: Halswell Centre, Upper Riccarton and Hornby provided Matariki events for preschoolers and drop in after-school craft sessions.



Community fundraising efforts for Matatiki hydrotherapy pool



The Rotary Club of Hornby and the Greater Hornby Residents' Association are leading the campaign to raise \$1.4 million for the hydrotherapy pool at Matatiki Hornby Centre.

Fundraising initiatives include a 'Buy a Bubble' campaign, a 'Splash for Cash' community day on 10 November 2023 and a range of activities, including a charity auction and mufti days at local schools.

Thank you!

Waitai Coastal-Burwood-Linwood Community Board

Report to Council – September 2023



Presenters: Paul McMahon, Chair and Jackie Simons, Deputy Chair

1

Highlights from the Ward Area



All Saints Community Facility

Board Priority – improve access to Burwood Community Facilities

Construction has begun on the All Saints Community Facility located on New Brighton Road. The Church had purchased the old foundry building from the University of Canterbury and will be using this along with new construction elements to form the facility. Groundworks began recently with the anticipated completion of the project being late 2024.

Give Gear Get Great

Over 70 pairs of trainers were donated to the Haeata Community Campus through the Christchurch City Council Give Gear Get Great Project and with the support of Eastern Sports and Recreation. The shoes will be given out to those across the school and community who are in need and will also be used to kit out the Schools Spring Challenge Team with the appropriate footwear to compete and complete the Challenge.

2



Highlights from the Ward Area

Linwood Community Gardens

The community gardens at Te Whare Taonga o Nga Iwi Katoa have had a lot going on over the last month. Hosting the girl's group from Linwood Avenue Community Corner Trust, the girls got the chance to explore the gardens and meet the chickens, they planted spring bulbs to take home and had a go a moulding some clay.

The University of Canterbury Compost Club were at the Linwood Community Gardens delivering their *Hot Compost* workshop for the garden volunteers, explaining the difference between the hot and cold methods and between green and brown organic material. Participants helped to gather the materials to build up the pile and learn how to turn it regularly to aerate it and reduce the pile to *compost cake* in just under two weeks.

Just in time for their working bee, held on 27 August, Linwood Community Gardens added 15 new hens to their brood, providing eggs for the community pantry based outside Te Whare Taonga o Iwi Katoa Linwood Resource Centre.



Highlights from the Ward Area

Principals Breakfast Meeting

The Waitai-Coastal-Burwood-Linwood Community Board hosted the second of the Principals Breakfast series. Representatives from Whītau, Avonhead Girls and Shirley Boys High Schools, Te Aratai, Kimihia Parents College and New Brighton Catholic School attended the breakfast hui on Thursday 17 July from 7.30am.

The principals heard from the Funding Team on the Mayor's Welfare Fund and about the Safe and Sustainable Schools Travel Programme from the Travel Demand Management Team. Following the presentations from staff, the principals had an opportunity to raise some issues and challenges that they were tackling in an open forum. This was useful for the Community Board to hear about the pressing issues and discuss how Council might work collaborative to address and resolve some of these moving forward.

4



Advocacy



Organics Processing Plant

Where should we send green bin organics?

Residents say odours from the Organics Processing Plant are affecting them. We need a short-term option to manage organics until we have a permanent solution by 2027-29.



5

Advocacy



Portlink

6

Thank you!

Te Pātaka o Rākaihautū Banks Peninsula Community Board Report to Council – August 2023



Presenters: Lyn Leslie, Board Chairperson & Penelope Goldstone, Community Governance Manager Banks Peninsula

Decisions Made Under Delegation

Strengthening Communities Fund (SCF) Grants

- The Board approved 20 grants to organisations within Banks Peninsula at the 7 August 2023 Meeting.

Summer With Your Neighbours 2023-24

- The Board allocated \$3,000 from its Discretionary Response Fund towards Summer With Your Neighbours

Community Service Awards 2024

- The Board allocated \$3,000 from its Discretionary Response Fund towards the Triennial Banks Peninsula Community Service Awards



Decisions Made Under Delegation

Steadfast Site

- The Board approved a lease to TS Godley, which includes a Memorandum of Understanding with the Cass Bay Residents Association
- The Board approved community consultation on a ground lease to Cass Bay Residents Association for the purpose of constructing a community facility

Akaroa Mens Shed

- The Board granted a lease to Akaroa Mens Shed

Akaroa Proposed Mobility Park

- Achieving the desired community outcome of a well-connected and accessible city through improved road safety
- Located on the south side of Selwyn Ave, southeast of Rue Jolie - outside the library and cinema



Progress on Community Board Plan Priorities

Work with local communities to manage and/or develop community facilities that support community connection

- The Board granted land and a building lease to Akaroa Men's Shed Charitable Trust
- The Board approved consultation on a ground lease for the purpose of constructing a community facility at the Steadfast park site in Cass Bay

Support community organisations that deliver social services, build community capacity and/or undertake initiatives to connect their communities with funding, letters of support and advocacy

- Strengthening Communities fund (SCF) grants
- The Board approved the transfer of funds to the 2023-24 Discretionary Response Fund (DRF)



Community Engagement

Reserve Committee Induction Meetings

- 25 attendees over two locations, Akaroa and Lyttelton
- Explanation of the new Reserve Committee Terms of Reference, adopted 12 December 2022 and the new Reserve Committee Handbook
- Presentations by staff across various units including Parks and Community Governance.
- Reveal of our new Banks Peninsula Reserve Committee Webpage, creating easy access to Reserve committee meeting schedules, meeting minutes, reserve schedules and triennial plans



Community Focus

2022/23 Cruise Season Community Meeting

- Hosted by the Community Board and ChristchurchNZ
- Over 120 in attendance
- Open mic for locals to express the impact of the Cruise season
- The community were appreciative of this opportunity
- Clear feedback received
- One of the solutions being investigated to relieve stress on the Lyttelton community is to provide passenger transport direct from the Cruise berth into Christchurch.
- Explore providing real time updates on cruise ship timings, anticipated passenger numbers and any updates on cruise schedule changes to the community
- Undertake a full Cost Benefits Analysis of the 23/24 season including resident satisfaction, visitor experience, environmental and full economic impact considering any economic dispersal created by cruise visitation.



Thank you!
Ngā mihi nui





Christchurch West Melton Water Zone Committee

Triannual Report- Highlights from our Action Plan September 2023

Annabelle Hasselman & Mike Patchett

*The Christchurch West Melton Water Zone Committee
is a community led committee supported by councils.*

 fb.com/canterburywater

Christchurch
City Council

 **Selwyn**
DISTRICT COUNCIL

 **Environment
Canterbury**
Regional Council
Kaumihara Taiao ki Whaitaha

Christchurch West Melton Water Zone Committee

Key Focus for CWMZC since last Triannual Report

- Working with others in partnership
- Advocating for ongoing commitment & action
- Information sharing & support
- Education & awareness
- Having an impact to improve the health of our urban waterways

*The Christchurch West Melton Water Zone Committee
is a community led committee supported by councils.*

 fb.com/canterburywater

Christchurch
City Council 

 **Selwyn**
DISTRICT COUNCIL

 **Environment
Canterbury**
Regional Council
Kaumihara Teiao ki Waikato

Christchurch West Melton Water Zone Committee

Erosion & Sediment Control Workshop

- Successful Joint workshop BPZC, CWMWZC & Whaka-Ora Healthy Harbour
- 57 participants
- Where we are at..
- Where we need to be..
- Opportunities for collaboration..
- Key focus areas going forward
 - practical knowledge sharing/documentation
 - advocacy opportunities LTP
 - CCC \$9 SW Port Hills and Lyttleton Harbour Erosion & Sediment Control Project
 - Soil conservation programme on Banks Peninsula
 - Development of Port Hills Plan



The Christchurch West Melton Water Zone Committee
is a community led committee supported by councils.

 [fb.com/canterburywater](https://www.facebook.com/canterburywater)

Christchurch
City Council

Selwyn
DISTRICT COUNCIL

Environment
Canterbury
Regional Council
Kaumihara Teiao ki Waikato

Christchurch West Melton Water Zone Committee

Progress on CWMZC Resolutions

- Looking forward to ECan & CCC joint briefing on Erosion and sediment control programs in our November meeting.
- Supporting the proposed Port Hills Plan- Ki uta Ki Tai to tackle erosion and sediment control amongst other matters
- Provided feedback on the development on the CCC draft Healthy Waterbodies Action Plan through a collaborative partnership.

The Christchurch West Melton Water Zone Committee
is a community led committee supported by councils.

 fb.com/canterburywater

Christchurch
City Council 

 Selwyn
DISTRICT COUNCIL

 Environment
Canterbury
Regional Council
Kaumihara Toiao ki Waiohau



Proposed Port Hills Plan

The Christchurch West Melton Water Zone Committee is a community led committee supported by councils.

 [fb.com/canterburywater](https://www.facebook.com/canterburywater)

- Over arching principle of **Te Mana o te Wai** – The Health of our waterbodies is 1st priority
- **Ki Uta Ki Tai** approach
- Need a partnership between agencies, mana whenua, landowners and community
- Needs to integrate issues and management
- The process & development of Port Hills Plan needs to be inclusive and participatory
- Needs to maintain and build on existing strong relationships, work and community

Christchurch
City Council

 **Selwyn**
DISTRICT COUNCIL

 **Environment
Canterbury**
Regional Council
Kaumihara Taiao ki Waikato

Christchurch West Melton Water Zone Committee

Integration of issues and action for management

Include:

- Erosion and sediment loss from the Port Hills to our waterways
- Soil conservation and erosion management
- The protection and restoration of biodiversity & native habitats
- Management of invasive weeds and pest
- Management of fire risk
- Appropriate recreation use
- Appropriate land uses
- Protection of landscape values

The Christchurch West Melton Water Zone Committee
is a community led committee supported by councils.

 [fb.com/canterburywater](https://www.facebook.com/canterburywater)

Christchurch
City Council 

 Selwyn
DISTRICT COUNCIL

 Environment
Canterbury
Regional Council
Kaumihara Toiao ki Waikato

Christchurch West Melton Water Zone Committee

Community Waterways Partnership

- CWMZC continues to support the development and work of CWP
- Attended hui in June
- Focusing community action around picking up litter in and around our waterways
- Litter is soft drug for engaging people in behaviour change around our urban waterways

The Christchurch West Melton Water Zone Committee is a community led committee supported by councils.

 [fb.com/canterburywater](https://www.facebook.com/canterburywater)



Christchurch
City Council

Selwyn
DISTRICT COUNCIL

Environment
Canterbury
Regional Council
Kaumihara Teiao ki Waikato

Christchurch West Melton Water Zone Committee

Draft Healthy Water Bodies Action Plan

- Acknowledge work of Dr Belinda Margetts in the development of this draft plan
- Recommend the Council commits to working collaboratively with ECan and the community to develop & implement this alongside with the ECan Regional Policy Statement

The Christchurch West Melton Water Zone Committee is a community led committee supported by councils.

 [fb.com/canterburywater](https://www.facebook.com/canterburywater)



Figure 1 Objectives for the Christchurch City Council's Healthy Waterbodies Action Plan
From CCC Draft Healthy waterbodies Action Plan for Christchurch City (May 2023)

Christchurch
City Council

Selwyn
DISTRICT COUNCIL

Environment
Canterbury
Regional Council
Kaitiaki Takekōwhiri



Stormwater Engagement

- Regional Education & Awareness Campaign-worked with ECan
- Range of media avenues
- Provided to community groups for use

The Christchurch West Melton Water Zone Committee
is a community led committee supported by councils.

f [fb.com/canterburywater](https://www.facebook.com/canterburywater)

Christchurch
City Council

Selwyn
DISTRICT COUNCIL

Environment
Canterbury
Regional Council
Kaumihara Toiao ki Waikato

Christchurch West Melton Water Zone Committee

Stormwater Engagement



The Christchurch West Melton Water Zone Committee
is a community led committee supported by councils.

 [fb.com/canterburywater](https://www.facebook.com/canterburywater)



Christchurch
City Council

Selwyn
DISTRICT COUNCIL

Environment
Canterbury
Regional Council
Kaunihera Taiao ki Waikato

Christchurch West Melton Water Zone Committee

Stormwater Super Hero Awards

- To recognise & reward good practice at industrial & land development /construction sites around stormwater management.
- Thank you for the support of CCC for the proposed Awards evening in November .



*The Christchurch West Melton Water Zone Committee
is a community led committee supported by councils.*

 [fb.com/canterburywater](https://www.facebook.com/canterburywater)

Christchurch
City Council

 **Selwyn**
DISTRICT COUNCIL

 **Environment
Canterbury**
Regional Council
Kaumihara Toiao ki Waikato

Christchurch West Melton Water Zone Committee

ECan Regional Policy Statement (RPS) Engagement

- Acknowledge the huge job of ECan to develop the new RPS
- CWMZC involved in initial engagement
- We supported and facilitated a workshop for community groups.
- This enabled conversations & input around aspirations for our freshwater water & coast
- Zone Committees have an important role to support & lead these community conversations with support from the ECan Engagement team



The Christchurch West Melton Water Zone Committee is a community led committee supported by councils.

 [fb.com/canterburywater](https://www.facebook.com/canterburywater)

Christchurch
City Council

Selwyn
DISTRICT COUNCIL

Environment
Canterbury
Regional Council
Kaumihara Toiao ki Waitaha

Christchurch West Melton Water Zone Committee

Action Plan & Budget

- We are now beginning to look at the allocation of our \$75,000 to to implement our revised Action Plan for 2023/2024
- \$ have enabled progress and impact to be obtained for the projects and strengthened community knowledge & understanding.
- See report for previous allocations

*The Christchurch West Melton Water Zone Committee
is a community led committee supported by councils.*

 fb.com/canterburywater

Christchurch
City Council 

 Selwyn
DISTRICT COUNCIL

 Environment
Canterbury
Regional Council
Kaumihara Toiao ki Waikato

Christchurch West Melton Water Zone Committee

Welcome to New Member

- Welcome to Amber Moke the new Te Hapū o Ngāti Wheke representative on the Committee
- We look forward to working with Amber.

*The Christchurch West Melton Water Zone Committee
is a community led committee supported by councils.*

 fb.com/canterburywater

Christchurch
City Council 

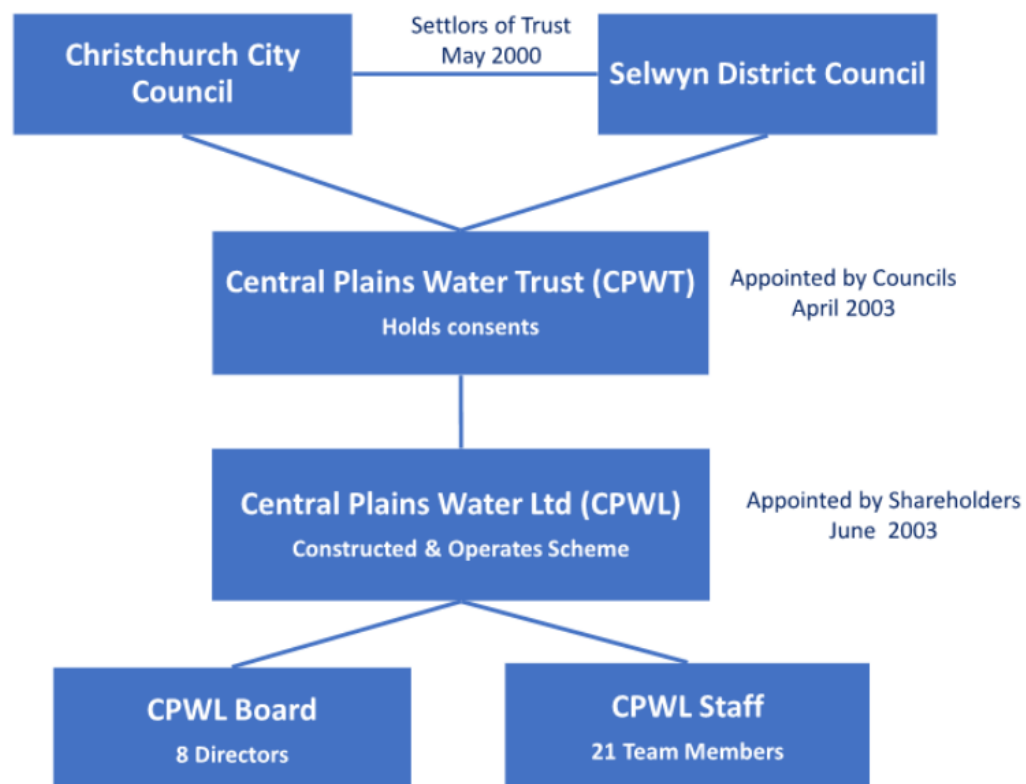
 Selwyn
DISTRICT COUNCIL

 Environment
Canterbury
Regional Council
Kaumihara Toiao ki Waitaha

CPWL Overview Presentation to Christchurch City Council September 2023

CENTRAL PLAINS **WATER** 
Sustainable water growing our world

CPWL Structure



- CPWT (a public charitable trust) = consent holder - owns consents to irrigate **60,000ha (lodged 2008, granted 2012)**
- CPWL = farmer shareholder entity (400) – established to raise funds to obtain and implement consents.
- MOA between CPWT and CPWL – licences use of the consents to CPWL
- CPWL - Cost recovery model

CENTRAL PLAINS **WATER** 

100-year Intergenerational Environmental Infrastructure



100-year vision and plan
100-year multi generational infrastructure valued at \$422 M



Climate adaptation and climate resilience



Currently supply river water to 263 farms across 45,000ha, and manage a total of 71,000ha for food and fibre production

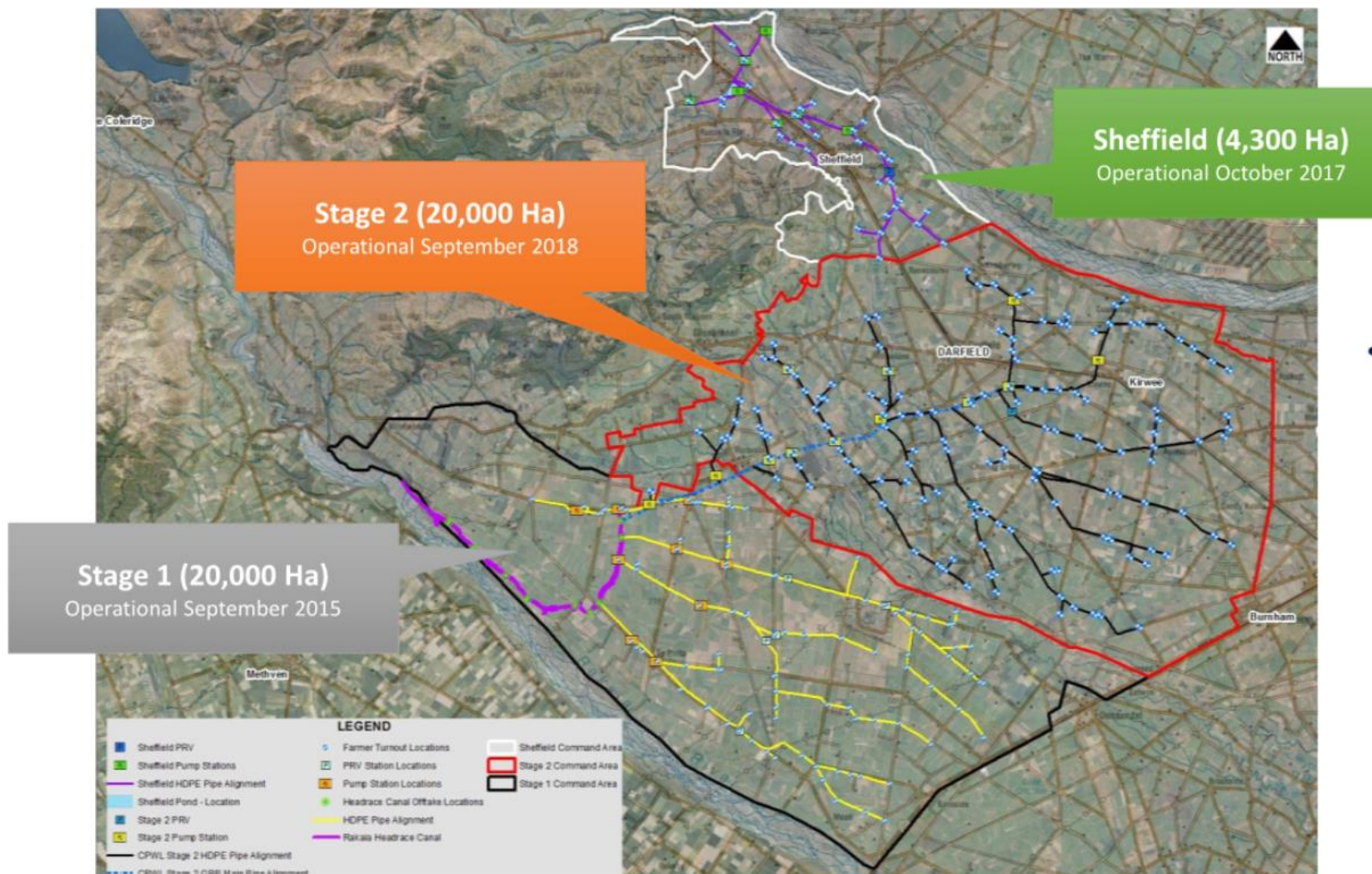


Looking to the future, we aim to leverage Scheme infrastructure for climate adaptation and resilience.



Renewable energy initiative – solar to supply electricity for scheme pumping (phase 1).

CENTRAL PLAINS **WATER** 



- Construction commenced in 2014 and was completed across all three stages by 2018

CENTRAL PLAINS WATER

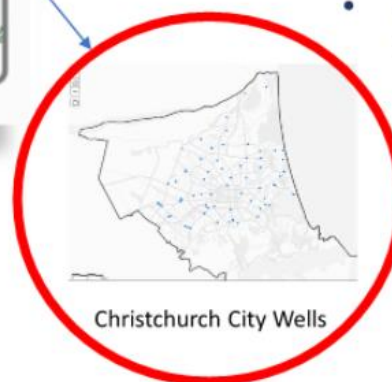
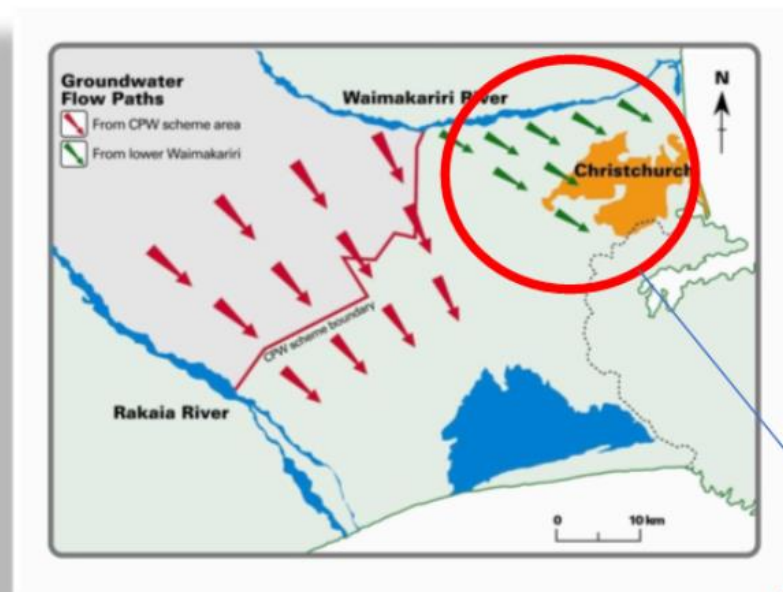
Why CPWL – run of river water?



- Provide a reliable source of run-of-river water to irrigators
- Enable groundwater abstractors to switch off allowing the replenishment of aquifers and improve flows in lowland streams

CENTRAL PLAINS **WATER** Co-operative

Christchurch Water Supply Concerns



- Ground water drainage from scheme area is toward lake Te Waihora, rather than toward Christchurch
- The Christchurch water table will be unaffected by the Scheme due to the hydrological water pressure created by this 'foothills to sea water flow'.
- Christchurch groundwater influenced by the Waimakariri River

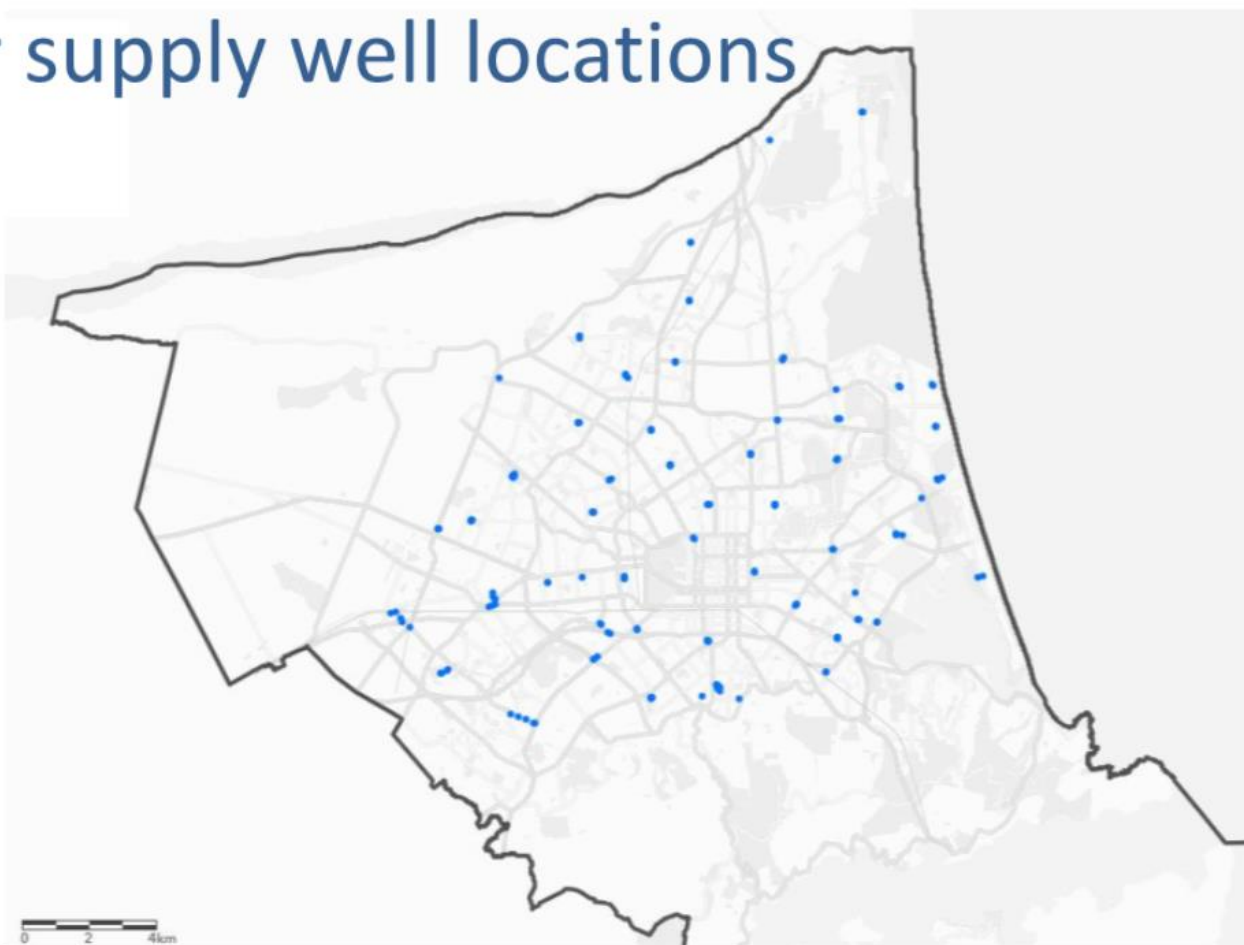
City public water supply well locations

At Dec 2022 Christchurch City Council's public water supply wells

148 wells @2023:-

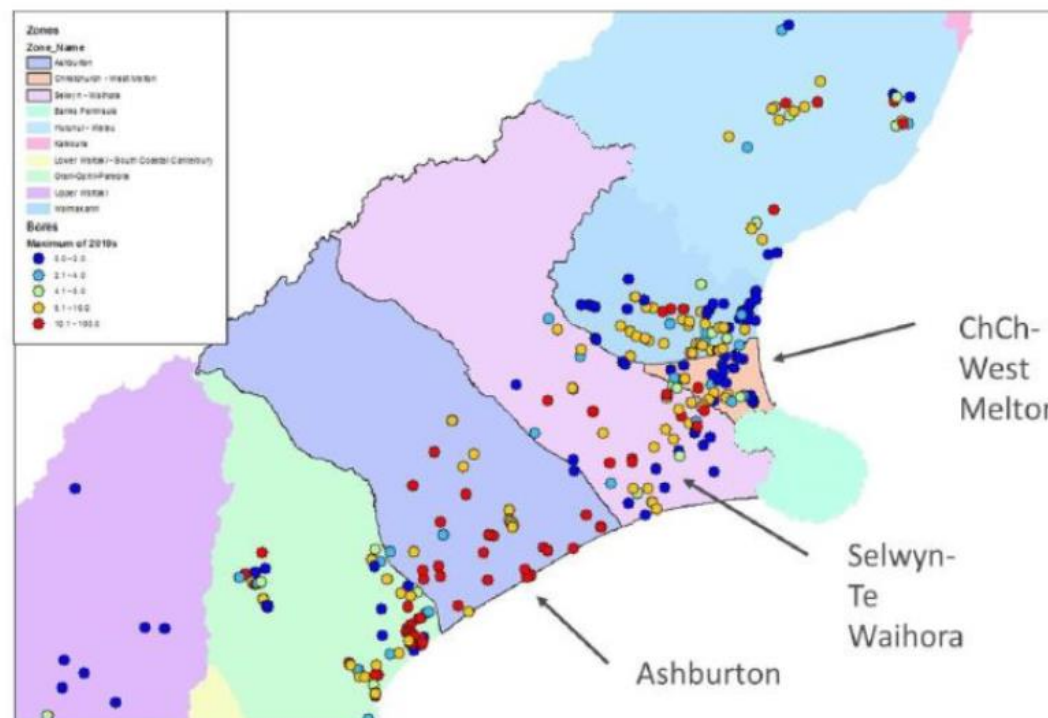
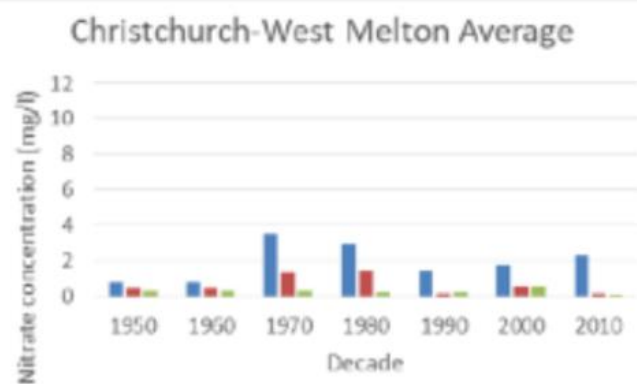
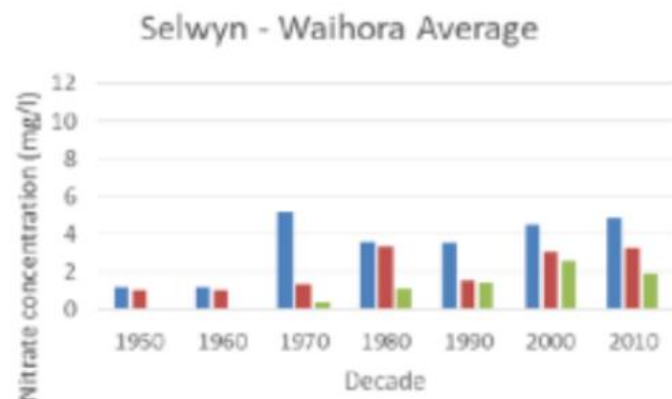
- 10 wells depth range between 28-36m
- 133 wells depths are between 58m and 235m deep in urban/suburban Christchurch

(Supplied by CCC)



CENTRAL PLAINS **WATER** LTD

Responses in different zones

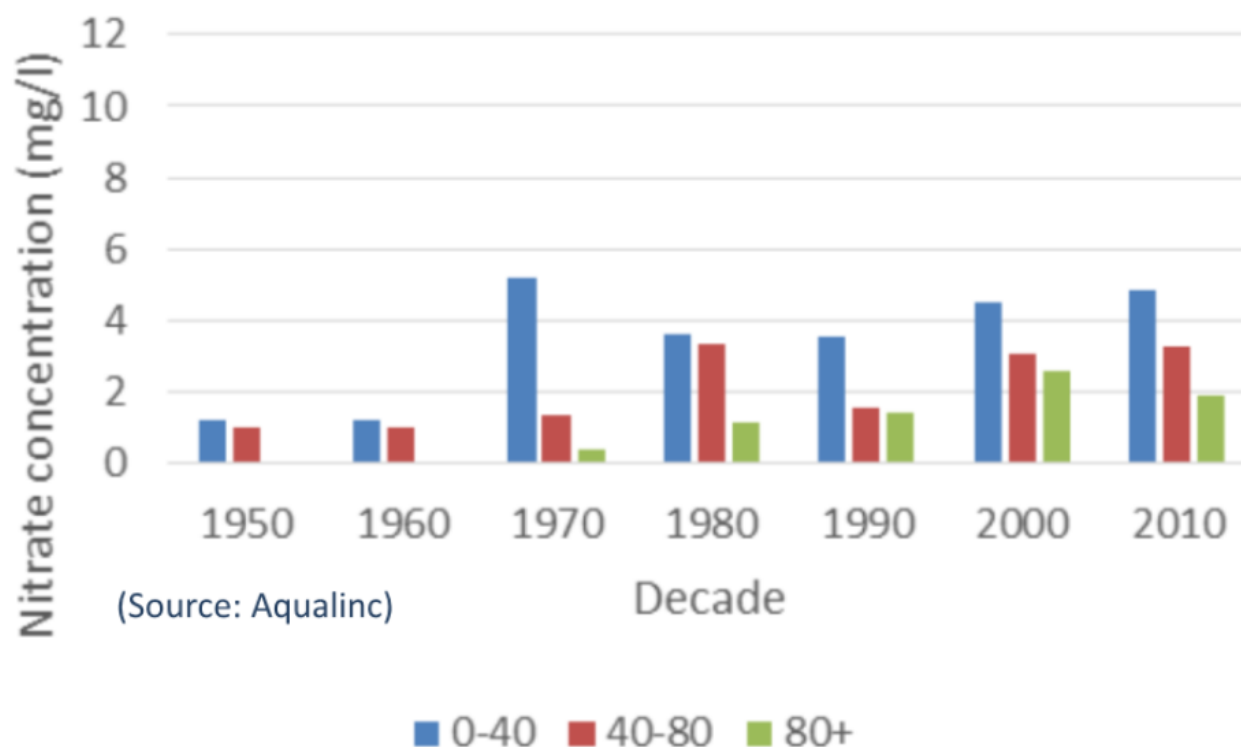


(Source: Aqualinc)

CENTRAL PLAINS WATER

Selwyn-Waihora by decade

Selwyn - Waihora Average

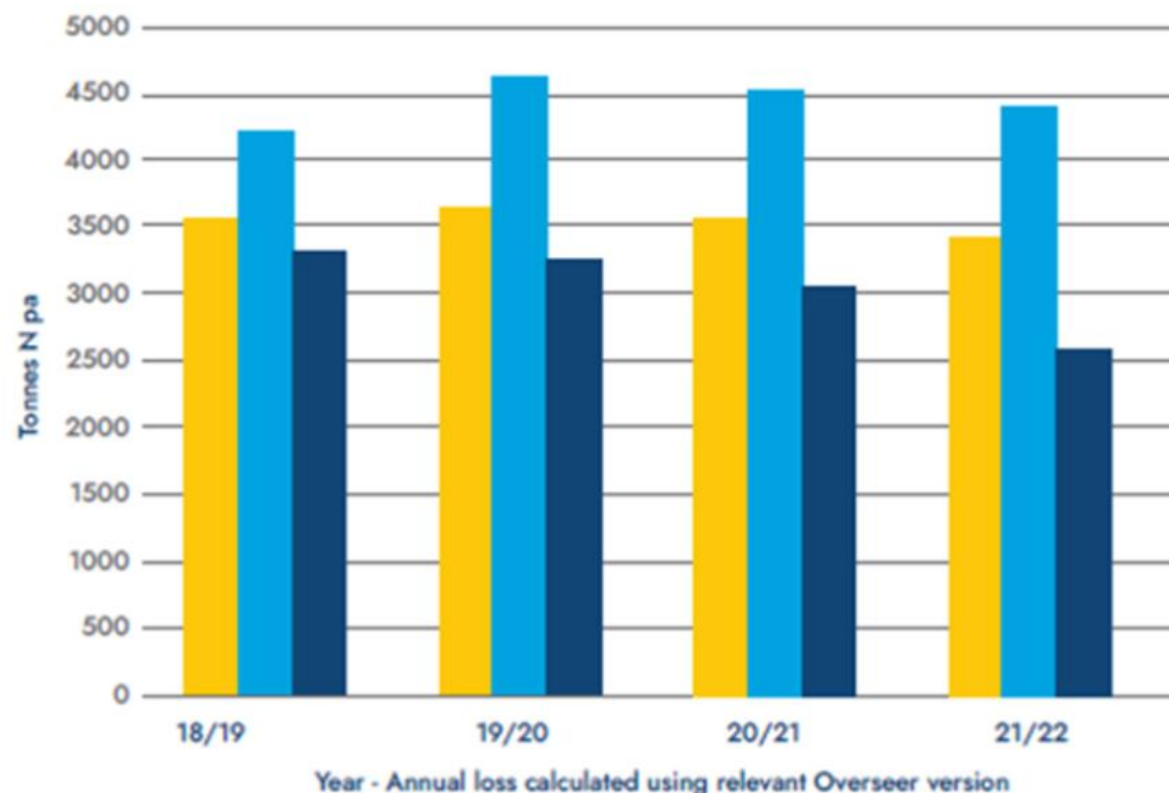


- Water flows in Selwyn Waihora do not influence CCC water supply.
- Nitrate concentrations variable but relatively high across much of the area relatively low around lake edges.
- Environmental monitoring results significantly influenced by baseline water quality (1970's-1980's) results but within historical range and there are some encouraging signs.

CENTRAL PLAINS **WATER**

CPWL is Reducing Nitrogen loss

The following graph shows permitted N Loss vs Actual N Loss



- Pre CPWL N Lost to Water
- Permitted N Lost to Water
- Actual N Lost to Water

- Current N loss is **24% less than pre-CPWL levels**
- Actual N loss is **41% less than permitted.**

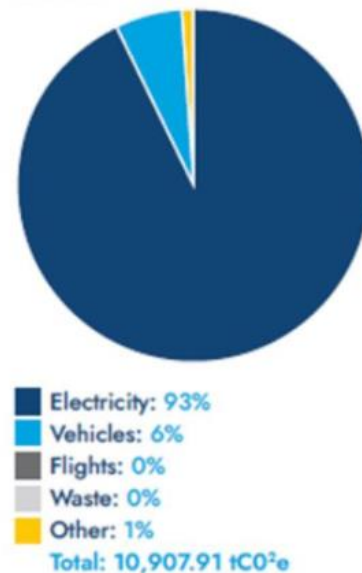
CENTRAL PLAINS **WATER** Co-operative

CPWL Performance

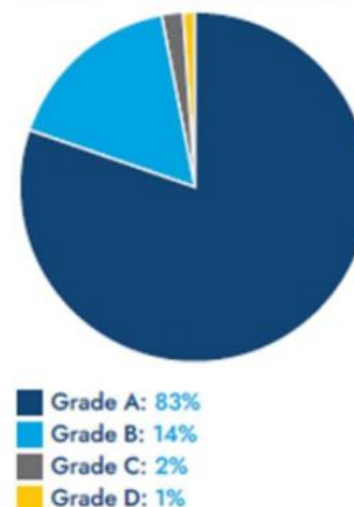
EMF Funds Dispersal 2016 – 2022



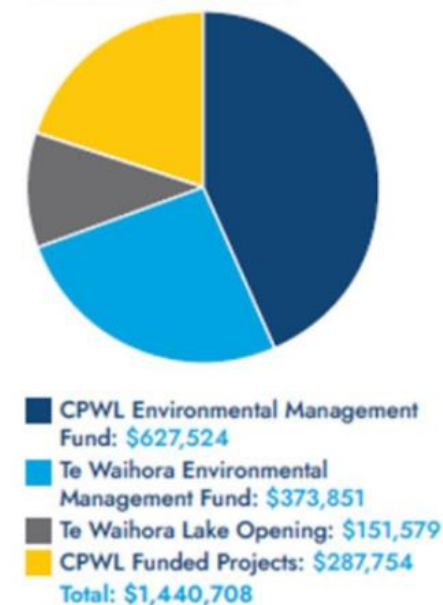
Carbon Footprint tCO₂e 2021 – 2022



FEP Grades 2021 – 2022 Season



Environmental Initiatives To Date



CENTRAL PLAINS **WATER**

Questions ?

CENTRAL PLAINS **WATER** 

Additional slides for information

CENTRAL PLAINS **WATER** 
Sustainable water growing our world

Community Benefits



100-year multi generational infrastructure valued at \$422 M



We supply water to irrigate 45,000ha from run of river water and stored water from Lake Coleridge.



We supply 263 Farms



We Contributed \$293M to Canterbury GDP in 2022;
Rating take has doubled in the Selwyn District.



Employment direct: 893 FTE's; indirect 1,816 FTE's
Hororata School has one of the highest ethnic diversities in NZ



From 2016 – 2022 CPWL contributed over **\$1.4M to enhance catchment bio diversity**,
made up of native tree planting, wetland protection and research.
We have planted over 70,000 trees.

CENTRAL PLAINS **WATER** 

Targeted Stream Augmentation

- Largest NRR in the world developed solely for environmental purposes.
- Targeted Stream Augmentation / Near River Recharge:
 - < 3.5 cubic metres per second discharged to the gravels of the Selwyn River in dry years
 - Return near surface aquifers to average levels for a dry year
 - Constructed and commissioned in 21/22
 - Monitoring down stream
- Long term impact on lowland streams.
- Greendale School use area as their Outdoor Classroom



CENTRAL PLAINS **WATER** 

Scheme Construction Stages – overview

CENTRAL PLAINS **WATER** 
Sustainable water growing our world

Scheme Infrastructure Summary

	Stage 1	Stage 2	Sheffield	Total
Area (Ha)	23,000	17,000	4,100	44,100
Connections	130	150	35	315
Pipework (km)	130	190	39	359
Pump Stations/ Installed Capacity (MW)	10/3.3	12/4.4	7/3	29/10.7
Construction Months	17	22	10	49
Capital Cost (\$M)	265	159	65	489
Capital Cost per Ha(\$)	8,043	10,750	10,353	9,397
On Farm Irrigation Investment (\$M)	49.0	112.0	26.3	187.3
Land Access Agreements	104	230	40	374

CENTRAL PLAINS **WATER** 

Stage 1

- 17 km headrace + 2 km intake channel
- 3.45 M m³ earth moved
- 30m wide, 5m deep
- 90Ha geotextile underlay
- 55Ha HDPE liner
- 4 offtakes
- 13 bridges
- HDPE Pipes 1600mm – 200mm
- 3 HDPE extruders operated 24/7 to produce 132 km pipe (100T PE beads per day)
- Pipe installation rate 3.2 km/week

CENTRAL PLAINS **WATER** 

Stage 1 Infrastructure



CENTRAL PLAINS **WATER**



CENTRAL PLAINS **WATER** CO

Stage 2

- 20,000 Ha. supply area
- Connected to headrace via 2.5m diameter offtake structure
- 22km GRP pipeline up to 2.5 m diameter
- 170 km HDPE pipe up to 1.2m diameter
- 150 on-farm turnouts



CENTRAL PLAINS **WATER**

Stage 2 Infrastructure



CENTRAL PLAINS **WATER**

Sheffield Water Scheme

- Physically separate from the rest of the Scheme
- Includes delivery of stockwater and has the ability to replace existing stockwater network
- 4,400 Ha. irrigation capacity
- A combination of gravity fed and pumped water supply
- 2 Million m³ in scheme storage pond (11 days per farm)
- 37 km HDPE pipe
- One 2.5 MW pump station pumping to storage pond
- 6 pump stations boost pressure to farms

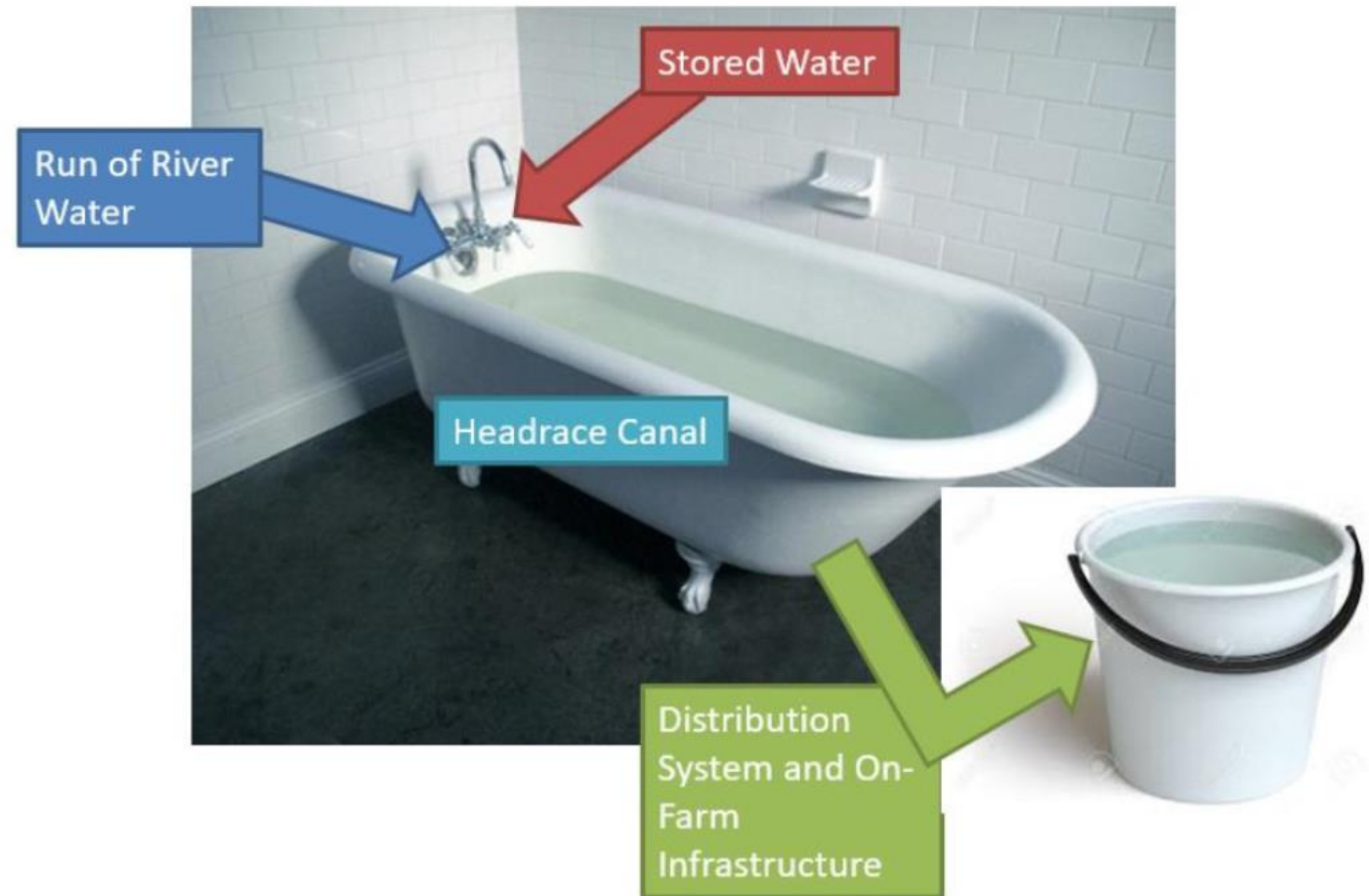
Sheffield Water Scheme Infrastructure



How does it all work?

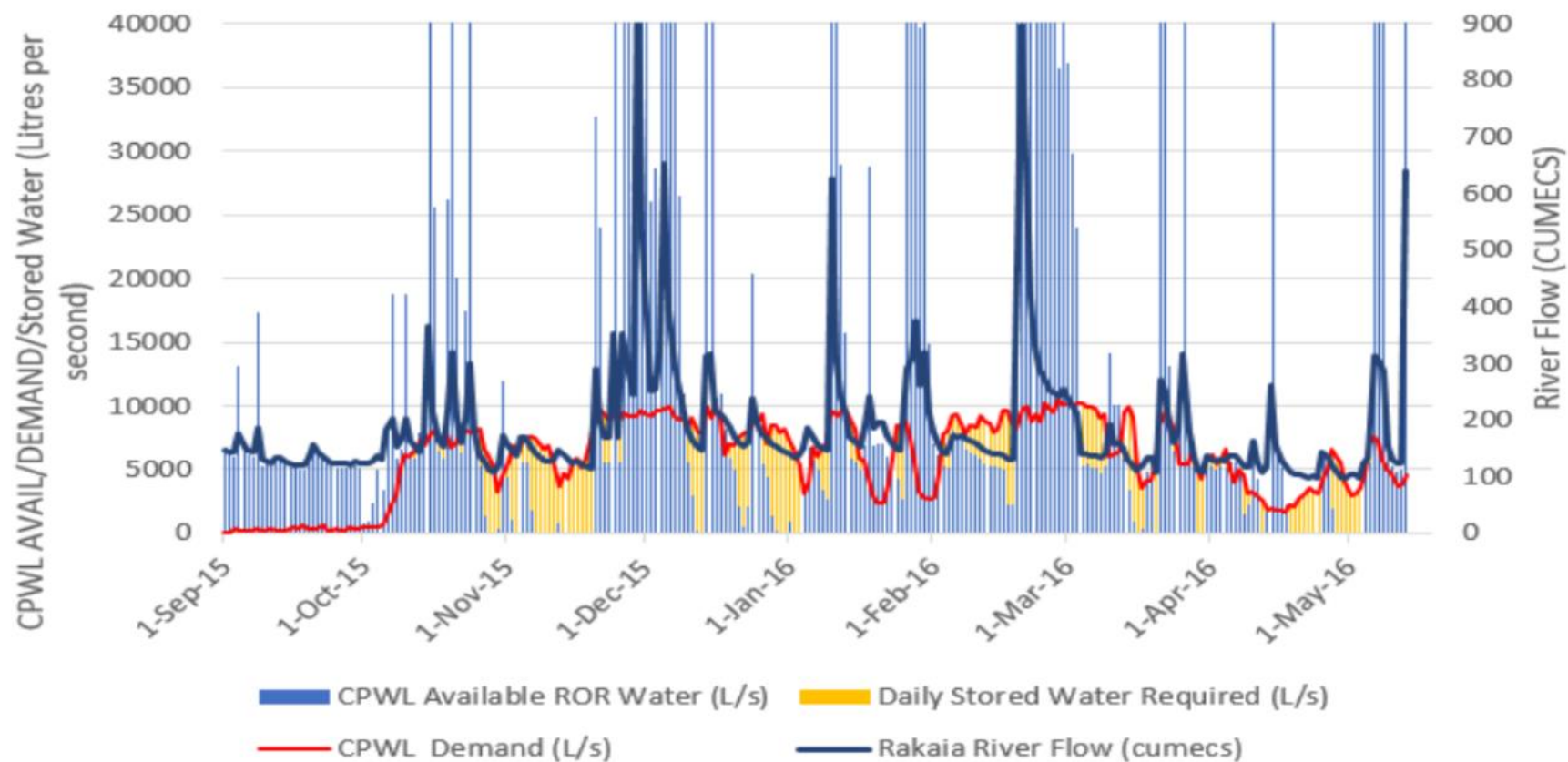
CENTRAL PLAINS **WATER** 
Sustainable water growing our world

The “Bathtub” Model

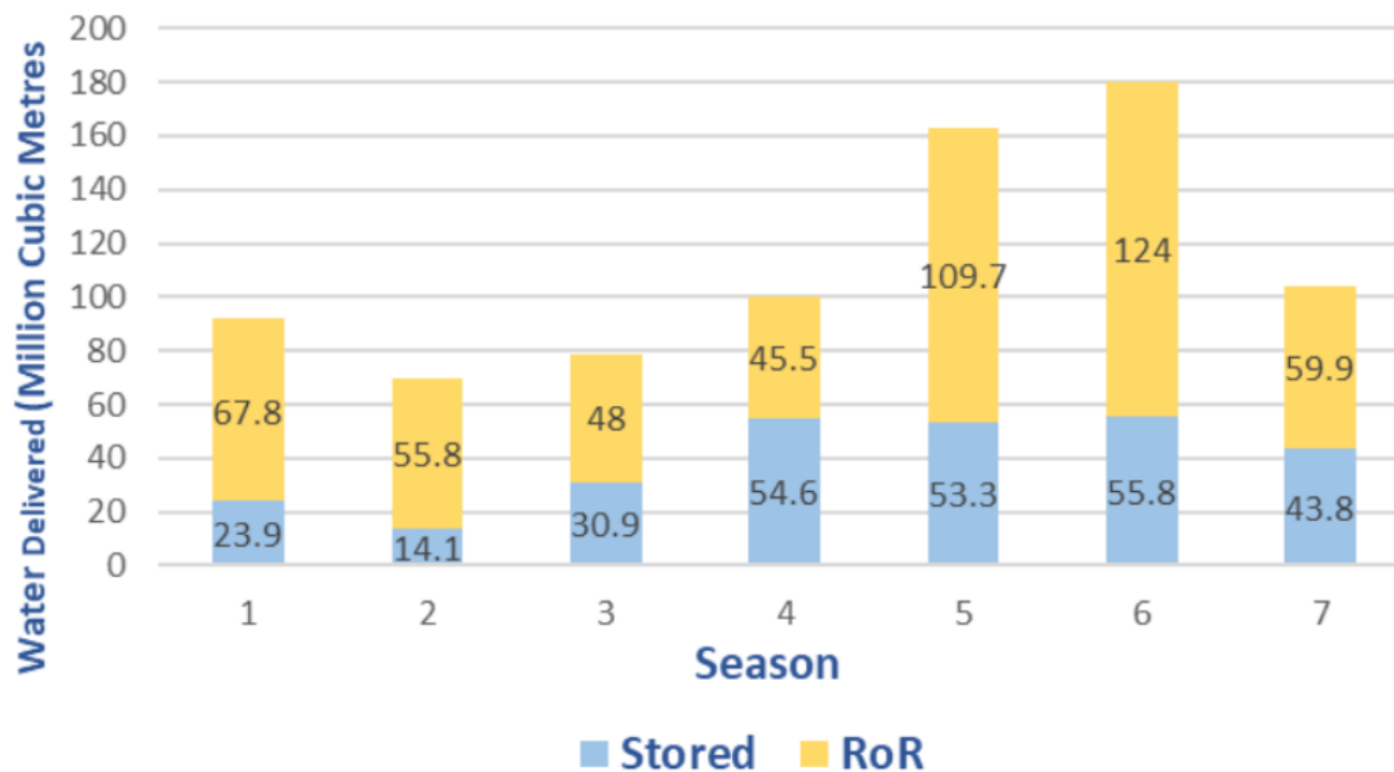


Achieving Reliability

Season Water Source and Demand Summary



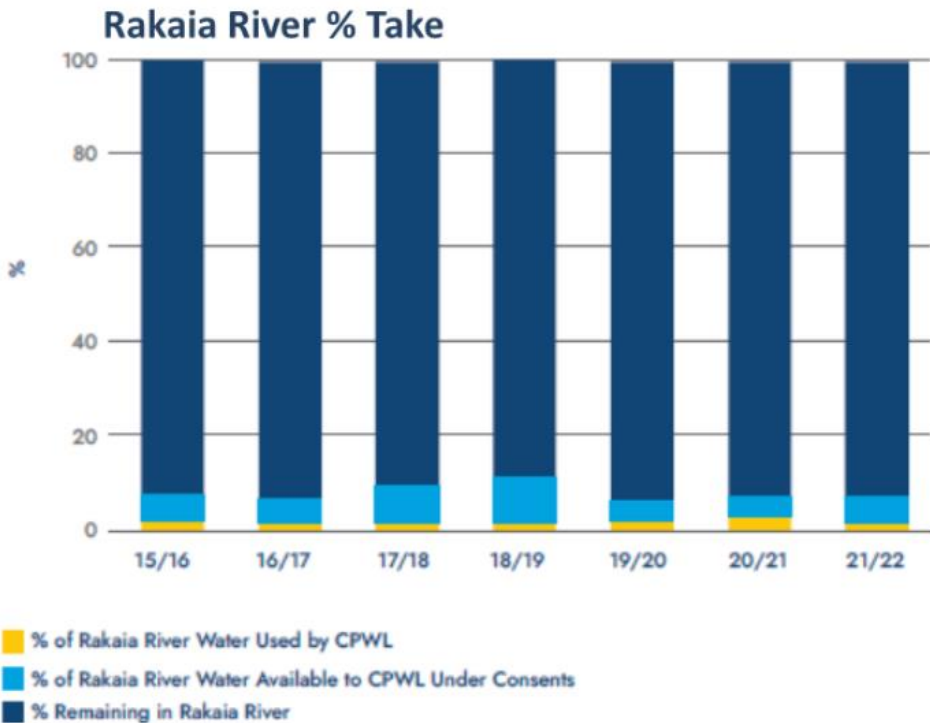
Rakaia – total water delivered by season



Run of River (RoR) is taken at permitted flows, when flows reach lower trigger levels, CPWL then takes stored water released from Lake Coleridge. This approach provides the Scheme with 98% reliability, while protecting the river flows.

CENTRAL PLAINS **WATER**

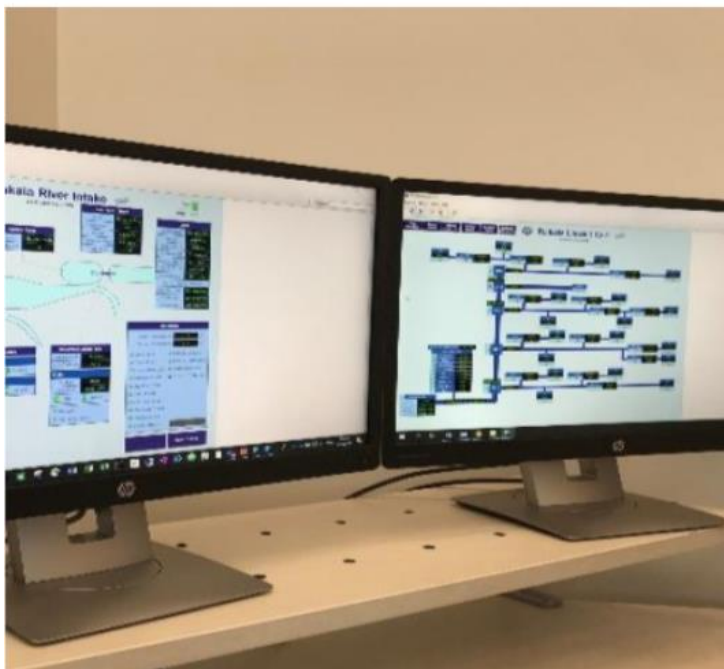
Percentage River Water taken by CPWL



Waimakariri River % Take

	2017/2018	2018/2019	2019/2020	2020/2021	2021/2022
Waimakariri River Annual Flow (million cubic metres)	337.79	368.25	399.95	376.28	288.30
% of Waimakariri Available to CPWL Under Consents	1.91%	3.07%	2.78%	2.51%	2.77%
% of Waimakariri Water Used by CPWL	0.25%	0.14%	0.31%	0.25%	0.18%

CENTRAL PLAINS WATER



World Class Technology

- Use of technology and communications enables us to deliver water with a relatively small operational team
- The entire scheme is controlled and alarmed remotely
- 24x7 response to operational issues
- Flows, pressures and water levels monitored to ensure scheme health and efficiency
- River levels, water take and discharge are monitored to ensure compliance with consents – monitored at 15-minute increments, 24/7/365 days per year. Data submitted to ECan for compliance.
- On farm technology advancements are continuing to provide improved on-farm efficiencies

CENTRAL PLAINS **WATER** 

Additional benefits



Contributing to the Te Waihora Environmental Management Fund (**EMF**) and to the cost of opening Te Waihora/Lake Ellesmere.



Providing 20 connection points to supply water for Fire and Emergency New Zealand's firefighting. Fires have decreased by 50% since CPWL commenced.



Providing a pipeline for future supply of raw water to drinking water treatment plants;
Supplying water for stock drinking purposes.



Development of a website that shows potential evapotranspiration across the Scheme area.



Supporting a near river recharge (**NRR**) project.

CENTRAL PLAINS **WATER** 

Central City Biannual Report

January - June 2023

Headlines

Vacant Land: 22% fall across the Four Avenues since 2021

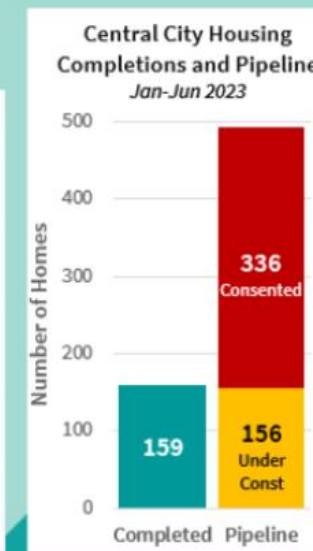
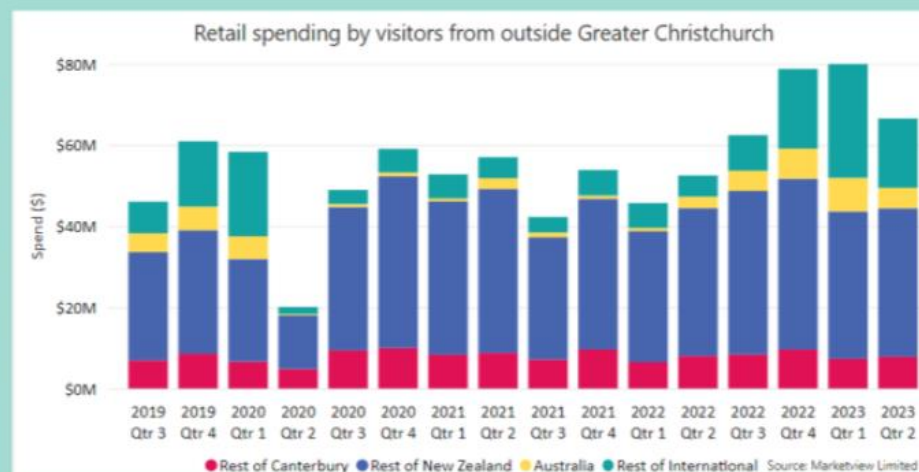
Central City Spending: Record spending is boosted by tourists, but the cost-of-living squeeze is affecting resident spending

Central City Housing: Strong half year completions of 159 homes

Safety Patrols: Council funding support will extend the service into 2025



Full range of stats available at [Central City Progress Dashboard](#)
or
google: Central City Progress



Amenity & Activation

Vacant Sites Programme

Vacant land area down from 59 to 37 hectares
50% less unmanaged/unused land

State of Central City Vacant Land (Jan 2020 - Jun 2023)



A Vibrant, People Focused Place Day and Night



Temporary Car Park Improvement
City Vacant Rating is encouraging visible site improvements.



606-608 Colombo Street

Christchurch
City Council

A Vibrant, People Focused Place Day and Night

Amenity & Activation

Enliven Places Programme, and City-Making Partners



207 St Asaph Street

Basketball Court

Partnership with Ecan.
Basketball court, seating,
spray cans and murals.

Enliven Project Funds and City-Making Partners

Numerous events,
activations, engagement
funded by Council.



146 Gloucester Street

Pocket Park

Planters, seating
and street art.



A Vibrant, People Focused Place Day and Night

Amenity & Activation

Barrier Sites

137 Cambridge Terrace (Harley Chambers)

New owners exploring consents for a new use on this prominent site.



92 Lichfield Street (Sargoods)

Street upgrade next to Bus Exchange completed following removal of containers. Repairs continue.



Total number of Barrier Sites

16 sites

Number of Barrier Sites with no commitment to action

2 sites

Growth and Economic Activity Central City Development

The Thriving Economic Heart of an International City



Christchurch
City Council

Growing Liveable Central City Neighbourhoods

People

Project 8011: Central City residential growth

Housing growth

159 homes completed from Jan-June.



492 homes in the pipeline

(either homes with consent but not started or homes currently under construction).

South-East Neighbourhoods

Community Engagement and Southwark Street improvements



Questions?