

**Waipapa**  
**Papanui-Innes-Central Community Board**  
**MINUTES ATTACHMENTS**

---

**Date:** Thursday 10 August 2023  
**Time:** 4 pm  
**Venue:** Board Room, Papanui Service Centre,  
Corner Langdons Road and Restell Street, Papanui

---

<b>TABLE OF CONTENTS NGĀ IHIRANGI</b>	<b>PAGE</b>
<b>4.2. Max Hammett</b>	
A. Max Hammett - Presentation.....	3
<b>4.1. Public Forum - Dave Gardner</b>	
A. Dave Gardner - Presentation.....	7
<b>11. Innes Road street renewal (Mersey Street to the shops past Philpotts Road)</b>	
A. Innes Road Street Renewal - Staff Presentation.....	16

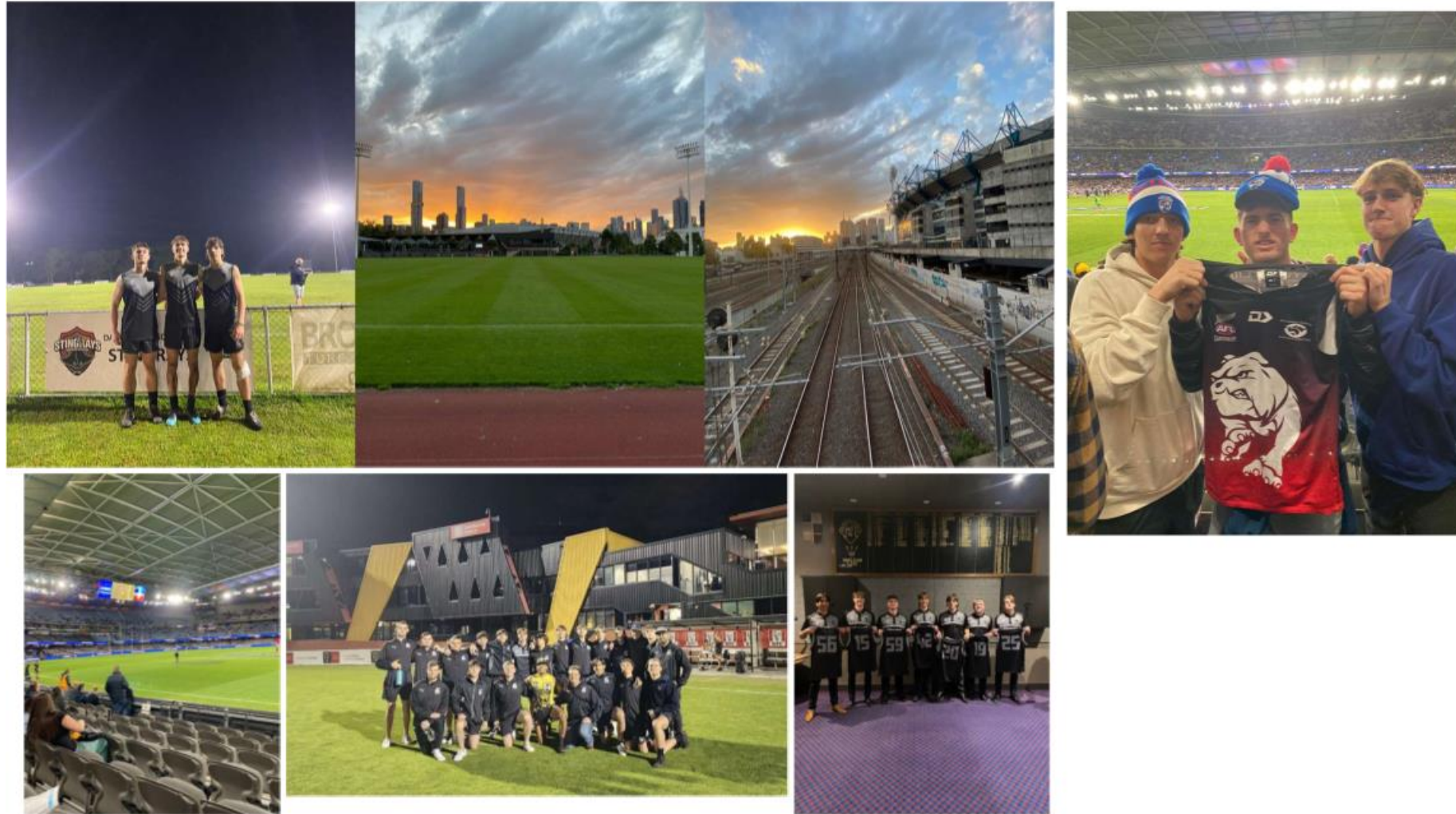
---



# Christchurch City Council

By Max Hammett

Hello my name is Max Hammett, I attend St Bede's College and am a year 13 student. As you most likely know I went to Melbourne to represent New Zealand in AFL. This was a great experience, I really enjoyed my time there as we were always doing something. We stayed at the BIG4 Mornington Peninsula Holiday Park. I was rooming with people from all over the NZ and made some new mates. Our first game was at Hastings club and we played Hastings U19s. They were a very good team winning there U19 Mornington country competition last season. The end score was 115-21. Or though the game was a blow out the boys took a lot out of it and we could carry that onto our next game. The next game we take on U17 Mornington Peninsula Representative side. This game was a lot closer 21-44. We were in this game till the end, I feel like the score doesn't resemble the game. Other than the games we went around 3 different AFL teams facilities the Richmond Tigers, St Kilda and Collingwood. We also went to an AFL game at Marvel Stadium. I would just like to say a massive thank you for helping me fund this trip. I wouldn't been able to do what I did without you guys helping out and this is a great step in my career going forward.



<https://www.facebook.com/gameface.loaded/videos/1618476598647588>

<https://www.facebook.com/gameface.loaded/videos/560948222800028>

# Desire Path

Rutland and Lewisham Reserves

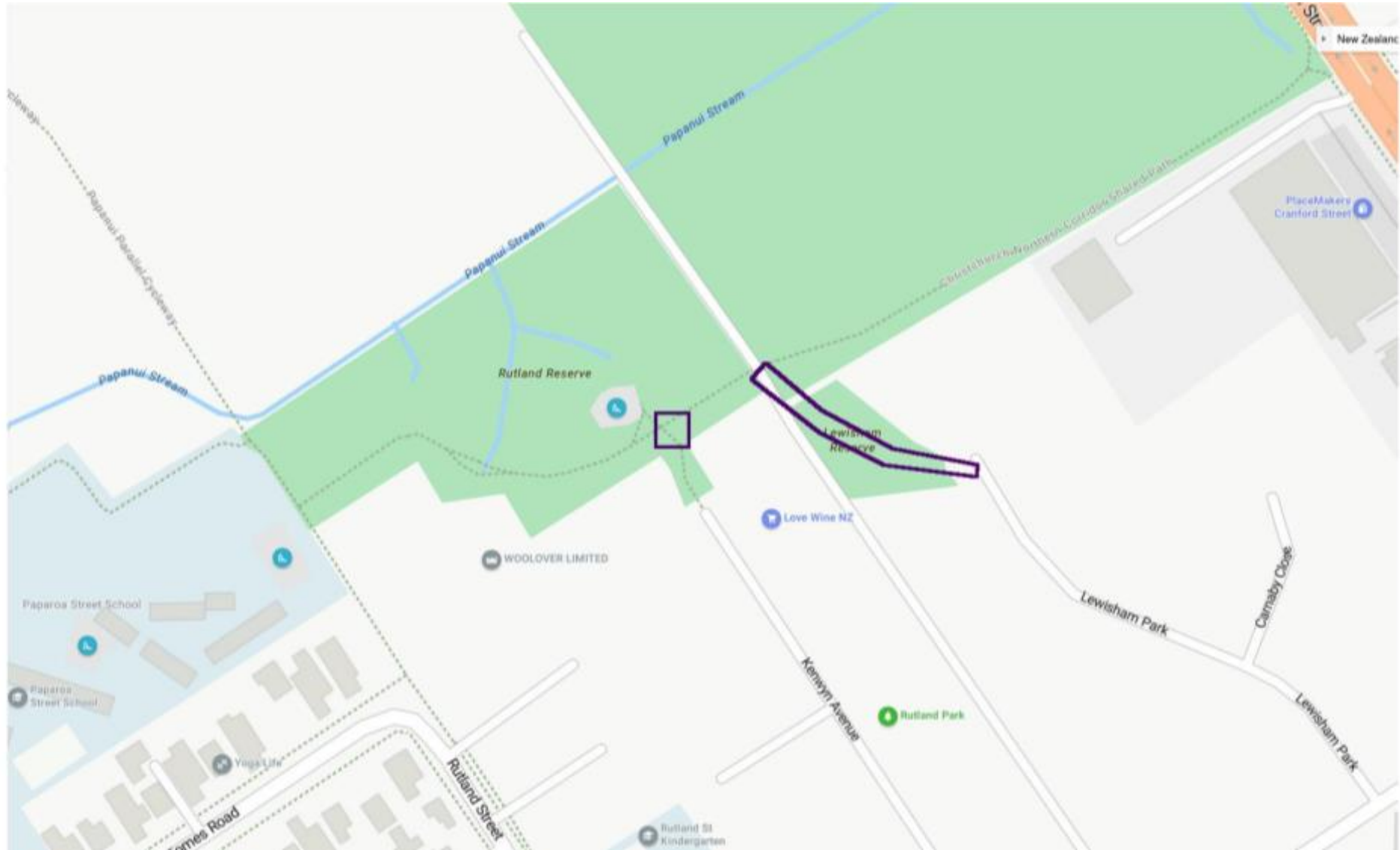
Dave Gardner

## What is a Desire path?

An unplanned route or path (such as one worn into a grassy surface by repeated foot traffic) that is used by pedestrians in preference to or in the absence of a designated alternative (such as a paved pathway)

<https://www.merriam-webster.com/dictionary/desire%20line>







## Rutland St Reserve





## Lewisham Reserve



## Lewisham Reserve





Thankyou







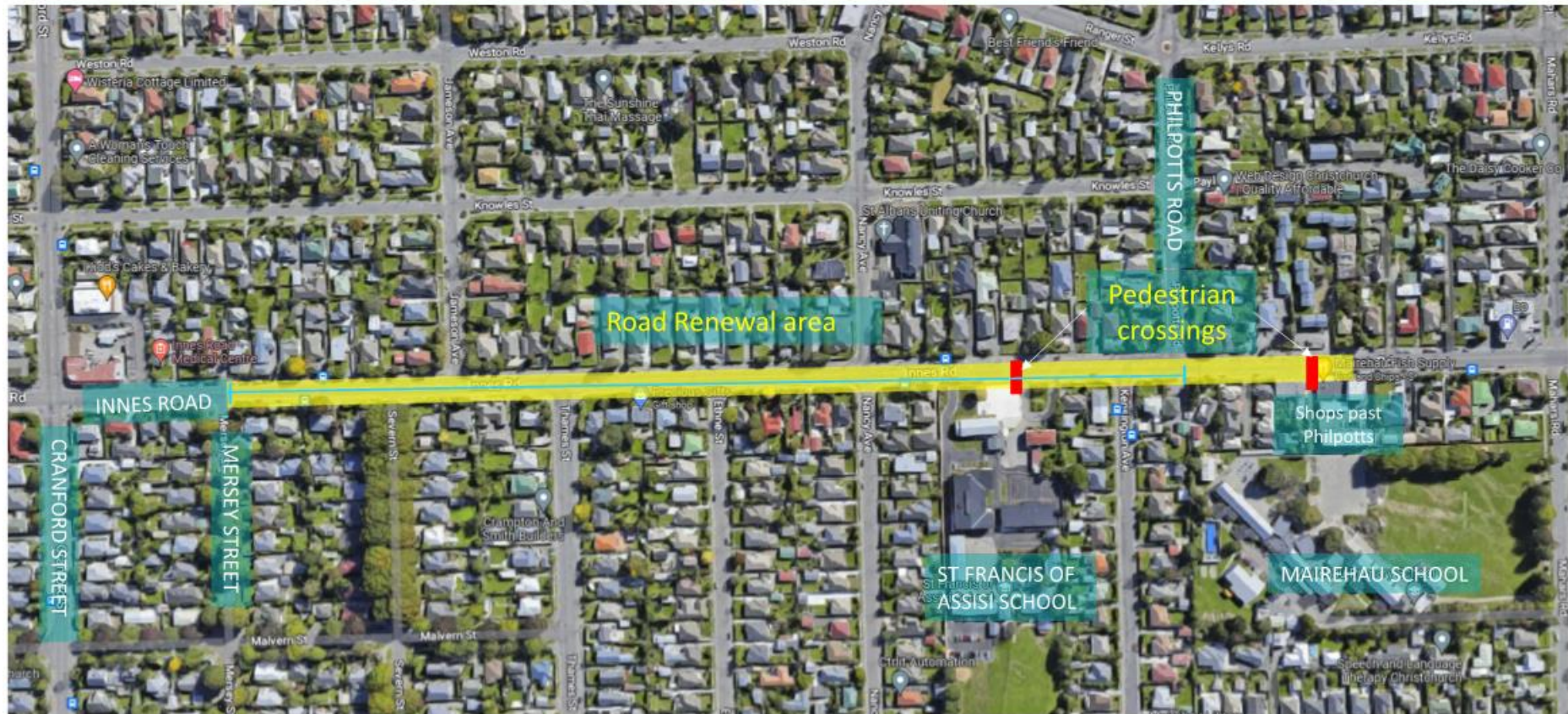
# Innes Road renewal (Mersey Street to the shops past Philpotts Road)

**10 August 2023**

Samantha Kelly – Transport Project Manager  
Sam Smith – Engagement Advisor  
Sharon O'Neill – Programme Manager Transport  
Graeme Carlyon – Beca, Associate Civil Engineer



## Project Area



## Project Area - Condition





# Making it way safer for children to get to school

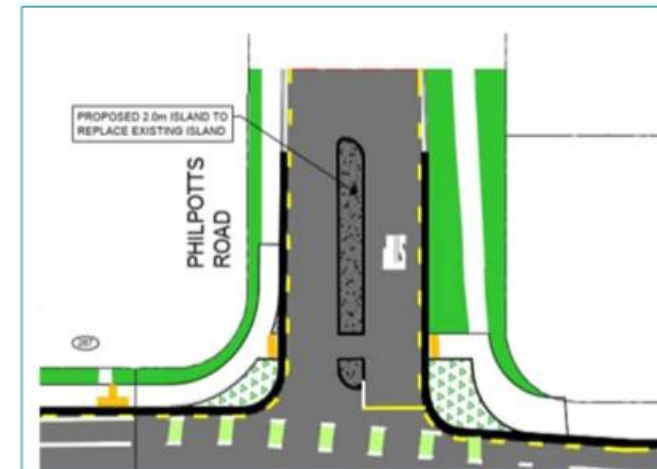
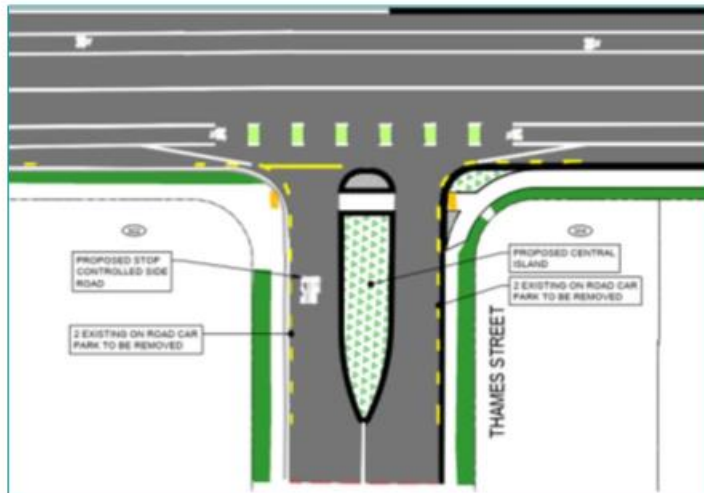


Existing zebra crossing  
Shops past Philpotts Road

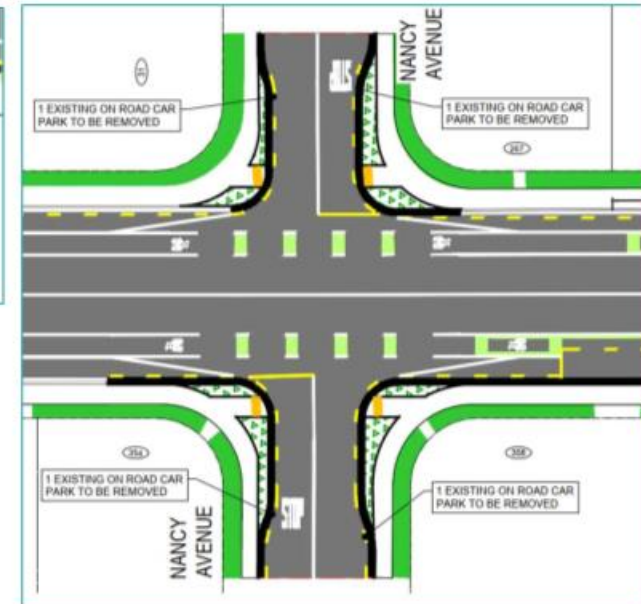
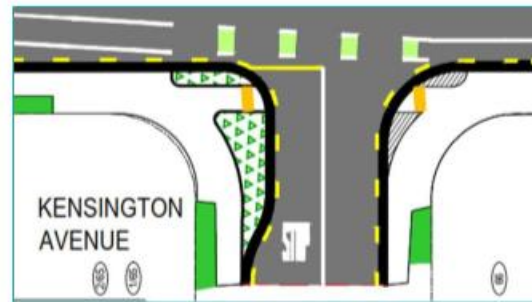
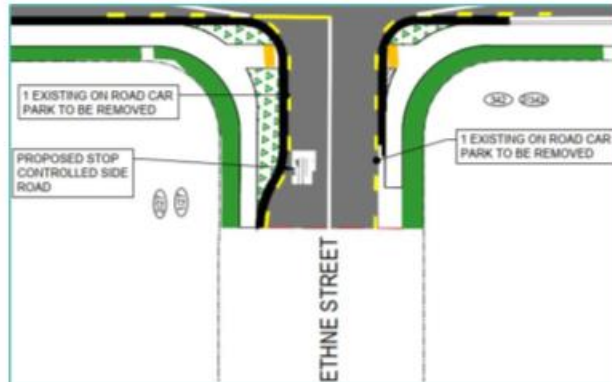


Raised pedestrian crossing  
Opawa Road

## Way safer side streets - Thames Street and Philpotts Road



## Way safer side streets – Ethne Street, Kensington Avenue & Nancy Avenue





## Other way safer improvements

- Installing tactile pavers at pedestrian crossing locations.
- Retaining the pedestrian refuge islands between:
  - Severn Street and Jameson Avenue; and
  - Kensington Avenue and Philpotts Road.
- Introducing green paint on the existing cycle lane.
- Removing 20 car parks to accommodate the side road safety improvements and to improve bus maneuverability and sightlines at side roads (one car park will be reinstated).
- Revising the cross-section layout to provide more consistent lane widths for vehicles, cyclists, and pedestrians.
- Widening some sections of footpaths to 1.8 meters.



## Engagement tactics

- We engaged early with St Francis of Assisi school and Mairehau Primary in June 2023
- Consultation was open for 2 weeks, from 28 June – 12 July
  - We reached out to stakeholders like local residents' associations, Fire and Emergency NZ, Environment Canterbury, and NZ Police, among others
  - Local businesses were all door knocked and received consultation letters, and residents in the area got project flyers delivered. Affected residents were door knocked and informed.
  - Flyers were available at local businesses like Michael's Espresso.
  - Signs with QR codes were placed at school entrances, and information was shared at Mairehau Library, Civic offices, and relevant Facebook pages.
- We heard from 46 submitters, including from 3 recognised organisations



## Themes – top 6



### 1) Concerns about road design and safety (37 submitters)

Improved road infrastructure on side streets, addressing congestion, addressing poor visibility at intersections, inadequate signage



### 2) Ideas for better pedestrian facilities (33 submitters)

Suggestions for wider footpaths, improved crossing points. Suggestions for accommodations for accessibility requirements, tactile pavers, widening of refuge islands



### 3) Support for road design improvements (30 submitters)

Endorsing the scheme plan, including the safety elements



### 4) Support for raised safety platforms (20 submitters)

Recognising the benefits of raised zebra crossings, which improve road safety, and reduce vehicle speeds



### 5) Concerns about visibility and safety at intersections (16 submitters)

Endorsing the scheme plan, including the safety elements



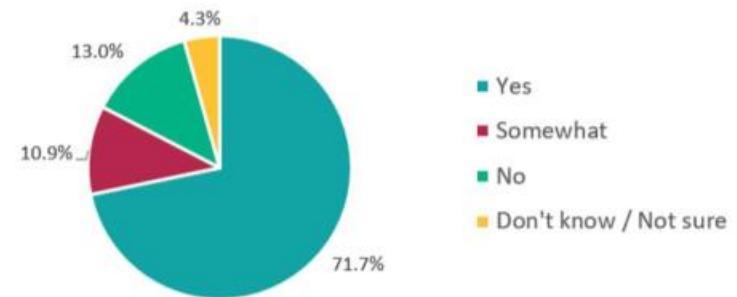
### 6) Concerns about cycling safety (15 submitters)

This included the requests for dedicated cycling infrastructure, and more protection for cyclists from traffic, especially near the bus stop outside St. Francis of Assisi school

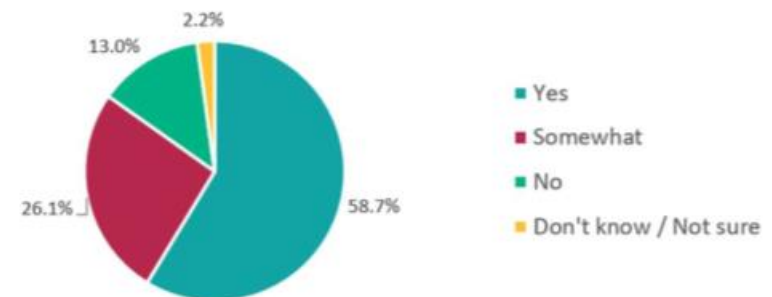


## Sentiment

Do you think installing raised safety platforms at the existing school zebra crossings will improve safety? (N=46)



Do you think this proposal will improve safety? (N=46)



# Questions?