
Ōtākaro Avon River Corridor Co-governance Establishment Committee AGENDA

Notice of Meeting:

An ordinary meeting of the Ōtākaro Avon River Corridor Co-governance Establishment Committee will be held on:

Date: Monday 21 August 2023
Time: 10:30am
Venue: Committee Room 1, Civic Offices,
53 Hereford Street, Christchurch

Membership

Members

Lianne Dalziel
Dr Te Maire Tau
Julyan Falloon
Hayley Guglietta
Thomas Hildebrand
Tutehounuku Korako
Dr John Reid
Dr Cynthia Roberts
Tania Wati

16 August 2023

Principal Advisor

Mary Richardson
General Manager Citizens &
Community
Tel: 941 8999

Luke Smeele
Democratic Services Advisor
941 6374
luke.smeele@ccc.govt.nz
www.ccc.govt.nz

Note: The reports contained within this agenda are for consideration and should not be construed as Council policy unless and until adopted. If you require further information relating to any reports, please contact the person named on the report.

To watch the meeting live, or a recording after the meeting date, go to:

<http://councillive.ccc.govt.nz/live-stream>

To view copies of Agendas and Minutes, go to:

<https://www.ccc.govt.nz/the-council/meetings-agendas-and-minutes/>



What is important to us?

Our Strategic Framework is a big picture view of what the Council is aiming to achieve for our community

Our focus this Council term 2022–2025

Strategic Priorities



Be an inclusive and equitable city which puts people at the centre of developing our city and district, prioritising wellbeing, accessibility and connection.



Champion Ōtautahi-Christchurch and collaborate to build our role as a leading New Zealand city.



Build trust and confidence in the Council through meaningful partnerships and communication, listening to and working with residents.

Adopted by the Council on 5 April 2023



Reduce emissions as a Council and as a city, and invest in adaptation and resilience, leading a city-wide response to climate change while protecting our indigenous biodiversity, water bodies and tree canopy.



Manage ratepayers' money wisely, delivering quality core services to the whole community and addressing the issues that are important to our residents.



Actively balance the needs of today's residents with the needs of future generations, with the aim of leaving no one behind.

Our goals for this Long Term Plan 2024–2034

Draft Community Outcomes



Collaborative and confident

Our residents have the opportunity to actively participate in community and city life, have a strong sense of belonging and identity, and feel safe.



Green and liveable

Our neighbourhoods and communities are accessible and well connected, supporting our goals to reduce emissions, build climate resilience and protect and regenerate the environment, especially our biodiversity, water bodies and tree canopy.

To be adopted by the Council as part of the Long Term Plan 2024–2034



A cultural powerhouse

Our diverse communities are supported to understand and protect their heritage, pursue their arts, cultural and sporting interests, and contribute to making our city a creative, cultural and events 'powerhouse'.



Thriving and prosperous

Our city is a great place for people, business and investment where we can all grow our potential, where enterprises are innovative and smart, and where together we raise productivity and reduce emissions.

Our intergenerational vision

A place of opportunity for all.

Open to new ideas, new people,
new investment and new ways
of doing things – a place where
anything is possible.



Ngāi Tahu has rangatiratanga over its takiwā – the Council is committed to partnering with Ngāi Tahu to achieve meaningful outcomes that benefit the whole community

**ŌTĀKARO AVON RIVER CORRIDOR CO-GOVERNANCE ESTABLISHMENT COMMITTEE – TERMS OF
REFERENCE/ NGĀ ĀRAHINA MAHINGA**

Co-Chairs	Hon Lianne Dalziel and Dr Te Maire Tau
Membership	Councillor Barber Tania Wati Dr John Reid Thomas Hildebrand Tutehounuku Korako Hayley Guglietta Cynthia Roberts Julyan Falloon
Meeting Cycle	Monthly
Reports To	Council
Focus	Council and Te Rūnanga o Ngāi Tūāhuriri

Introduction

- The Ōtākaro/Avon River is a taonga which has been enjoyed by the people of Ōtautahi/Christchurch for generations.
- Ngāi Tūāhuriri is a principal hapū and Papatipu Rūnanga of Ngāi Tahu, and Ngāi Tahu recognise the tino rangatiratanga that resides within these bodies. The Ōtākaro Avon River Corridor sits within Ngāi Tūāhuriri takiwā. Ngāi Tahu hapū have exercised rangatiratanga throughout its rohe for centuries. Its rangatiratanga existed before Te Waipounamu was colonised after 1840. Te Tiriti o Waitangi confirmed the right of Ngāi Tahu to its rangatiratanga, and the Crown reconfirmed Ngāi Tahu rangatiratanga in the Ngāi Tahu Claims Settlement Act 1998. That Act also provided that the Crown would enter a new era of cooperation with Ngāi Tahu.
- Regenerating the 602-hectare Ōtākaro Avon River Corridor (the Corridor) is a once in a life lifetime opportunity to create a legacy which benefits present and future generations. Stretching from the city to the sea the Corridor will provide a range of environmental, cultural, social, and economic benefits, focusing on the health and wellbeing of the Ōtākaro/Avon River (Te Mana O Te Wai) and ensuring a healthier place for people, the natural ecosystem (Te taiao) and the natural security of the people of Ōtautahi/Christchurch in preparation for climate change and the environmental changes during the 21st century and beyond.
- The regeneration of the Corridor is also an opportunity for Ōtautahi/Christchurch and Ngāi Tūāhuriri to demonstrate genuine partnership in a co-governance arrangement.
- While this agreement recognises the rangatiratanga of Ngāi Tūāhuriri, it also recognises the intergenerational investment and ownership of the people of Ōtautahi /Christchurch and the Christchurch City Council (the Council). This agreement does not undermine the authority of the Crown or local government but commits to a coordinated approach wherein the Corridor is forever protected and cloaked by both entities for the future well-being of the people of Ōtautahi /Christchurch.
- The role of Ngāi Tūāhuriri is to ensure that both parties govern the Corridor so that the environmental integrity and mahinga kai is secured and protected for future generations by the custom of Topuni¹ whereby the Corridor and awa are secured and developed as an environmental taonga for all citizens of Ōtautahi /Christchurch.

¹ The concept of Tōpuni derives from the traditional Ngāi Tahu tikanga (custom) of persons of rangatira (chiefly) status extending their mana and protection over a person or area by placing their cloak over them or it.

- In 2019, the global settlement agreement was entered into by the Crown and the Council. It provided for the ownership of the Corridor to be transferred progressively to Council during 2022 as property title matters were resolved. Once the Council owns all or most of the land and exercises decision-making powers over the land, an enduring co-governance entity will be established by the Council and Ngāi Tūāhuriri. This entity will make decisions under the delegation of the Council.
- In December 2021, the Council confirmed its intent to establish such a co-governance entity to govern the Corridor. That entity will comprise equal membership by Ngāi Tūāhuriri and the Council, noting that the Council appointees would be drawn from the Council and the wider community. Council also agreed to set up a Co-governance Establishment Committee.
- The establishment of a co-governance entity and a partnership with Ngāi Tūāhuriri and the Council, provides for and enables the exercise of rangatiratanga and kaitiakitanga by mana whenua, and provides for the relationship of mana whenua and their cultures and traditions with their ancestral lands, mahinga kai, water, sites, wāhi tapu and other taonga.

Purpose

The purpose of the Committee is to:

- Provide strategic direction, leadership and decision-making to ensure the Ōtākaro Avon River Corridor (ŌARC, the Corridor) and the Ōtākaro/Avon River are developed, managed and maintained to provide the optimal ecological, cultural, social and economic benefits.
- Provide advice on the development of the enduring co-governance entity/framework for the ŌARC

Functions

Provide strategic direction

- Develop a collective understanding of current and proposed future land uses, the various agreements already in place, and the strategic direction of the Council.
- Set the strategic direction for the integrated development of the Corridor with reference to the ŌARC Regeneration Plan; Mahaanui Iwi Management Plan; the Christchurch District Plan; the Council's ŌARC Activity Plan; and other national, regional and Council policies and strategies.
- Provide governance over-sight for the implementation of the Ōtākaro Avon River Corridor Activity Plan.

Advise on the enduring co-governance entity for the ŌARC

- Provide advice on roles and functions of the co-governance entity and the potential legal structure of the entity.
- Investigate and develop advice on the development of a local bill to establish the entity and provide an enduring legal status for the Corridor within a local Act of Parliament.

Land uses and projects

- Make decisions on leases, licenses, and access authorities for use of the land within the Corridor.
- Review significant applications for land uses to determine their appropriateness for the proposed location; the benefits they offer for the environment, adjacent communities and all residents; and their alignment with the Activity Plan and any regeneration plans.

- Approve project concept plans, feasibility and business cases.

Engagement and consultation

- Identify and understand stakeholder interests to be able to direct engagement for specific decisions.
- Establish and maintain effective dialogue and relationships with stakeholders to support the role of the Committee.
- Ensure appropriate engagement and consultation has occurred with communities and organisations.
- Provide information and report to the public using methods such as reports, meetings, and newsletters.

Funding

- Make financial decisions in accordance with the Council's delegations' policy.

Monitoring performance and reporting

- Receive regular performance reports on the Activity Plan
- Monitor the implementation of the Activity Plan including monitoring the delivery of the Levels of Service.
- The Activity Plan describes capital projects that will be delivered in the Corridor through four other Council Activity Plans: Parks Activity Plan; Stormwater Drainage Activity Plan; Flood protection and Control works Activity Plan; and Transport Activity Plan. The Council Parks Unit is responsible for the integrated planning and delivery of investment across Council.
- Consider and advise on conflicts and risks to achieving the Activity Plan.
- Report to Council quarterly, or more frequently if required.

Delegations

The Council delegates the following responsibilities to the Establishment Committee:

- To make decisions on land uses and activities on the Council-owned Ōtākaro Avon River Corridor land to be able to develop the land in accordance with the Committee's strategic direction.
- To make financial decisions in accordance with Council's delegations' policy

Committee membership

- The Committee has eight to ten members selected for their relevant skills, knowledge and leadership capabilities.
- At least one member will be a City Councillor/Mayor, and half will be identified by Ngāi Tūāhuriri.
- Ngāi Tūāhuriri accepts the requirements under the LGA 2002. Council will work with Ngāi Tūāhuriri to ensure the tikanga of its four members is respected in the appointment process.
- Co-Chairs will be appointed jointly by the Council and Ngāi Tūāhuriri.
- A quorum comprises 50% of members.
- The Co-governance Establishment Committee will be discharged once the establishment of an agreed and co-governing entity over ŌARC is constituted.

Meetings

- The Committee will operate in accordance with the requirements of the Local Government Official Information and Meetings Act 1987. Meetings will be advertised, and an agenda published.
- The Committee will meet monthly
- The Committee will work to achieve consensus wherever possible, and work in a collaborative and cooperative manner taking into account the interests of all sectors of the community.
- Members will contribute their knowledge and perspective but not promote the views or positions of any particular interest or stakeholder group.
- The Committee may receive presentations by invitation or agreement of the Co-Chairs.

Committee remuneration

- Remuneration for chairs and members will be set annually.
- The participation of an elected member in the Committee is part of their remunerated role as a councillor or Mayor.

Support for the Committee

The Council and Te Rūnanga o Ngāi Tūāhuriri will provide support to the Committee including:

- A Council General Manager and an advisor from Ngāi Tūāhuriri as Principal Advisors
- A Committee Advisor from the Hearings and Council Support Team will provide administrative and procedural support to the Committee.
- Relevant staff from across the Council will provide advice to the Committee.

Limitation of powers

- The Committee does not have the authority to commit Council to any course of action or unbudgeted expenditure.
- The general delegations to this Committee exclude any specific decision-making powers that are delegated to a Community Board, another Committee of Council or Joint Committee. Delegations to staff are set out in the delegations register.
- The Council retains the authority to adopt policies, strategies and bylaws

Appendix 1: Vision and Objectives of the ŌARC Regeneration Plan

The Vision from the Regeneration Plan

The river is part of us, and we are part of the river.
It is a living part of our city.

A place of history and culture
where people gather, play, and celebrate together.

A place of learning and discovery
Where traditional knowledge, science and technology meet.

A place for ideas and innovation

where we create new ways of living and connecting.

Our vision is for the river to connect us together –
with each other, with nature and
with new possibilities.

Nōku te awa. The river is mine.
We all share in the future of this river.
Ōtākaro Avon River. Together we thrive.

The Objectives from the Regeneration Plan

For Christchurch:

- Support safe, strong and healthy communities that are well connected with each other and with the wider city.
- Provide opportunities for enhanced community participation, recreation and leisure.
- Create a restored native habitat with good quality water so there is an abundant source of mahinga kai, birdlife and native species.
- Create opportunities for sustainable economic activity and connections that enhance our wellbeing and prosperity now and into the future.

For New Zealand:

- Develop the Ōtākaro Avon River Corridor as a destination that attracts a wide range of domestic and international visitors.
- Establish a world-leading living laboratory, where we learn, experiment and research; testing and creating new ideas and ways of living.
- Demonstrate how to adapt to the challenges and opportunities presented by natural hazards, climate change and a river's floodplain.

Appendix 2: Guiding documents

Mahaanui Iwi Management Plan 2013

- The Mahaanui Iwi Management Plan 2013 and its successive plans outlined by Ngāi Tūāhuriri must be given effect to when Council prepares or changes a district plan. The section on Ihutai includes the catchments of the Ōtākaro/Avon River and Ōpāwaho/Heathcote River and is an essential resource and guide when making decisions on the ŌARC.

Ōtākaro Avon River Corridor Regeneration Plan

- The ŌARC Regeneration Plan (August 2018) and the Christchurch District Plan together contribute to the strategic direction for the Corridor. The Regeneration Plan provides examples of preferred land uses, and the variability of land use in different reaches of the ŌARC. The Regeneration Plan centres on the awa/river and the vital role that the river plays within the Corridor and within the city. The plan emphasises a restored natural environment, and strengthened connection between people, the river and the land.

- The Regeneration Plan requires the development of an Implementation Plan to provide greater certainty about the funding, sequencing and delivery of the Regeneration Plan, and ensure coherent and co-ordinated development of the ŌARC.

Christchurch District Plan

- Section 13.14 of the Christchurch District Plan is particularly relevant. It defines the Specific Purpose (Ōtākaro Avon River Corridor) Zone, and provides objectives, policies, rules, standards and assessment criteria which seek to manage activities in the Zone. It sets out specific provisions for each sub-area defined in the Development Plan in Appendix 13.14.6.1 of the District Plan.

Council's Ōtākaro Avon River Corridor Activity Plan

- Regeneration will be delivered through significant investment in projects within the Corridor that include regenerative planting, tidal wetland development, long-term stopbank construction, stormwater treatment facilities, bridges, landings, and walking and cycling corridors.
- The Council has prepared an Ōtākaro Avon River Corridor Activity Plan in its Draft Annual Plan 2022-23 which describes capital projects that will be delivered through four other of Council's activity plans: Parks Activity Plan; Stormwater Drainage Activity Plan; Flood protection and Control works Activity Plan; and Transport Activity Plan.
- The infrastructure and environmental investments identified within this Activity Plan will facilitate a broad range of uses and activities within the Corridor, generating significant social, ecological and economic benefits. Careful integrated planning and delivery of investment will be required to ensure the most beneficial and cost-effective implementation.
- The Council Parks Unit is responsible for coordinating the cross-Council programme, reporting to the co-governance Establishment Committee and engaging with the community.
- The success of the Activity Plan will be measured by the health of the river and the environment; the restoration of mahinga kai; and present and future generations' enjoyment of the river and the corridor. The regeneration of the Ōtākaro Avon River Corridor is an opportunity for Ōtautahi Christchurch and Ngāi Tūāhuriri to demonstrate genuine co-governance, alongside innovative environmental leadership.

Part A	Matters Requiring a Council Decision
Part B	Reports for Information
Part C	Decisions Under Delegation

TABLE OF CONTENTS NGĀ IHIRANGI

Karakia Tīmatanga	10
C 1. Apologies Ngā Whakapāha	10
B 2. Declarations of Interest Ngā Whakapuaki Aronga	10
C 3. Confirmation of Previous Minutes Te Whakaāe o te hui o mua	10
MINUTES REPORTS	
C 4. Ōtākaro Avon River Corridor Governance Oversight for Projects Subcommittee Minutes - 10 May 2023.....	15
STAFF REPORTS	
C 5. Ōtākaro Avon River Corridor Assessment Framework.....	19
Karakia Whakamutunga	

Karakia Tīmatanga

Whakataka Te hau ki Te uru

Whakataka Te hau ki Te tonga

Kia makinakina ki uta

Kia mataratara ki Tai

E hi ake ana te atakura

He tio, he huka, he hau hu

Tihei Mauri Ora

1. Apologies Ngā Whakapāha

At the close of the agenda there was an apology received from Kelly Barber.

2. Declarations of Interest Ngā Whakapuaki Aronga

Members are reminded of the need to be vigilant and to stand aside from decision making when a conflict arises between their role as an elected representative and any private or other external interest they might have.

3. Confirmation of Previous Minutes Te Whakaāe o te hui o mua

That the minutes of the Ōtākaro Avon River Corridor Co-governance Establishment Committee meeting held on [Wednesday, 10 May 2023](#) be confirmed (refer page 11).

Note Item 4. That the minutes of the Ōtākaro Avon River Corridor Governance Oversight for Projects Subcommittee meeting held on Wednesday, 10 May 2023 be confirmed.

Ōtākaro Avon River Corridor Co-governance Establishment Committee OPEN MINUTES

Date: Wednesday 10 May 2023
Time: 10:10am
Venue: Boardroom, Beckenham Service Centre,
66 Colombo Street, Beckenham

Present
Members

Dr Te Maire Tau
Kelly Barber
Hayley Guglietta
Tutehounuku Korako
Dr John Reid
Cynthia Roberts
Tania Wati

Principal Advisor
Mary Richardson
General Manager Citizens &
Community
Tel: 941 8999

Luke Smeele
Committee & Hearings Advisor
941 6374
luke.smeele@ccc.govt.nz
www.ccc.govt.nz

To watch a recording of this meeting, or future meetings live, go to:

<http://councillive.ccc.govt.nz/live-stream>

To view copies of Agendas and Minutes, visit:

www.ccc.govt.nz/the-council/meetings-agendas-and-minutes/



-
- Part A** **Matters Requiring a Council Decision**
Part B **Reports for Information**
Part C **Decisions Under Delegation**
-

Karakia Tīmatanga: Dr Te Maire Tau

The agenda was dealt with in the following order.

1. Apologies Ngā Whakapāha

Part C

Committee Resolved OARCC/2023/00001

That the apologies received from Lianne Dalziel and Julyan Fallon be accepted.

Member Tau/Member Barber

Carried

2. Declarations of Interest Ngā Whakapuaki Aronga

Part B

There were no declarations of interest recorded.

3. Confirmation of Previous Minutes Te Whakaāe o te hui o mua

Part C

Committee Resolved OARCC/2023/00002

That the minutes of the Ōtākaro Avon River Corridor Co-governance Establishment Committee meeting held on Monday, 12 December 2022 be confirmed.

Member Tau/Member Barber

Carried

4. Ōtākaro Avon River Corridor Quarterly Report - May 2023

Dave Little presented the Ōtākaro Avon River Corridor Quarterly report.

The Committee discussed the decision-making framework for the OARC noting that it is important at this stage in the process to decide on a framework for decision making before considering projects.

The Committee requested that a structural workshop with Dr John Reid be scheduled for the end of June 2023.

The Committee requested that a framework workshop be scheduled for the end May or the start of June.

The Committee discussed the need to think intergenerationally when considering where the OARC sits with regards to the changes we are going to see in the future and take a broader perspective when assessing projects.

The Committee requested that in the future the Quarterly Reports are recorded against the chosen framework.

The Committee requested file notes be sent through to staff so that they can be included in the next report.

The staff recommendation was accepted without change.

Committee Resolved OARCC/2023/00003

That the Ōtākaro Avon River Corridor Co-governance Establishment Committee:

1. Receive the information in the Ōtākaro Avon River Corridor Quarterly Report (May 2023).

Member Tau/Member Barber

Carried

Discontinuation of OARC Subcommittee Meetings

The Committee discussed the necessity of the OARC Subcommittees and commented that they had fulfilled their purpose.

The Committee discussed the practicality of continuing to have individual Subcommittee meetings and commented that it would be more suitable to meet as one Committee of the whole and cease to meet as two separate Subcommittees.

The Committee commented that it is crucial that a decision making framework is established first before considering various projects which come after.

Committee Resolved OARCC/2023/00004

It was resolved on the motion of Member Dr Te Maire Tau, seconded by Member Cynthia Roberts that the Ōtākaro Avon River Corridor Enduring Entity Subcommittee and the Ōtākaro Avon River Corridor Governance Oversight for Projects Subcommittee be discontinued.

Member Tau/Member Roberts

Carried

5. OARC Implementation Plan

The staff recommendation was accepted without change.

Committee Decision

That the Ōtākaro Avon River Corridor Co-governance Establishment Committee:

1. Receive the draft Ōtākaro Avon River Corridor Implementation Plan.

Karakia Whakamutunga: Dr Te Maire Tau

Meeting concluded at 11:03am.

CONFIRMED THIS 21st DAY OF AUGUST 2023

Unconfirmed

4. Ōtākaro Avon River Corridor Governance Oversight for Projects Subcommittee Minutes - 10 May 2023

Reference / Te Tohutoro: 23/1151198

Report of / Te Pou Matua: Luke Smeele, Democratic Services Advisor,
luke.smeele@ccc.govt.nz

Senior Manager / Pouwhakarae: Lynn McClelland, Assistant Chief Executive Strategic Policy and
Performance (lynn.mcclelland@ccc.govt.nz)


1. Purpose of Report Te Pūtake Pūrongo

The Ōtākaro Avon River Corridor Governance Oversight for Projects Subcommittee held a meeting on 10 May 2023 and is circulating the Minutes recorded to the Ōtākaro Avon River Corridor Co-governance Establishment Committee for its information.

2. Recommendation to Ōtākaro Avon River Corridor Co-governance Establishment Committee

That the Ōtākaro Avon River Corridor Co-governance Establishment Committee confirm the Minutes from the Ōtākaro Avon River Corridor Governance Oversight for Projects Subcommittee meeting held 10 May 2023.

Attachments Ngā Tāpirihanga

No.	Title	Reference	Page
A 	Minutes Ōtākaro Avon River Corridor Governance Oversight for Projects Subcommittee - 10 May 2023	23/706665	16

Signatories Ngā Kaiwaitohu

Author	Luke Smeele - Committee & Hearings Advisor
--------	--



Ōtākaro Avon River Corridor Governance Oversight for Projects Subcommittee OPEN MINUTES

Date: Wednesday 10 May 2023
Time: 10:06am
Venue: Boardroom, Beckenham Service Centre,
66 Colombo Street, Beckenham

Present
Members
Kelly Barber
Dr John Reid
Tania Wati

Principal Advisor
Mary Richardson
General Manager Citizens &
Community
Tel: 941 8999

Luke Smeele
Committee & Hearings Advisor
941 6374
luke.smeele@ccc.govt.nz
www.ccc.govt.nz

To watch a recording of this meeting, or future meetings live, go to:

<http://councillive.ccc.govt.nz/live-stream>

To view copies of Agendas and Minutes, visit:

www.ccc.govt.nz/the-council/meetings-agendas-and-minutes/



Ōtākaro Avon River Corridor Governance Oversight for Projects
Subcommittee
10 May 2023

- Part A** Matters Requiring a Council Decision
Part B Reports for Information
Part C Decisions Under Delegation

Karakia Tīmatanga: Dr John Reid

The agenda was dealt with in the following order.

1. Apologies Ngā Whakapāha

Committee Resolved OARCG/2023/00001

That the apology received from Julyan Fallon be accepted.

Member Barber/Member Reid

Carried

2. Declarations of Interest Ngā Whakapuaki Aronga

There were no declarations of interest recorded.

3. 2023 Election of Chair and Deputy Chair

The Committee discussed the practicality of having two Subcommittee's meeting separately.

Officer Recommendations

That the Ōtākaro Avon River Corridor Governance Oversight for Projects Subcommittee:

1. Elects a Chair and Deputy Chair for 2023 as per Schedule 7 of the LGA 2002.

Committee Resolved OARCG/2023/00002

It was resolved on the motion of Member Kelly Barber, seconded by Member Dr John Reid that pursuant to Standing Order 20.2 that Item 3. 2023 Election of Chair and Deputy Chair lie on the table and will not be further discussed at this meeting.

Member Barber/Member Reid

Carried

Secritarial note

Item 3 will not go forward to another Subcommittee Meeting. The Ōtākaro Avon River Corridor Co-Governance Establishment Committee passed a motion on the 10 May 2023 to discontinue the Ōtākaro Avon River Corridor Enduring Entity Subcommittee and the Ōtākaro Avon River Corridor Governance Oversight for Projects Subcommittee.

Karakia Whakamutunga: Dr John Reid

Meeting concluded at 10:08am.

Ōtākaro Avon River Corridor Governance Oversight for Projects
Subcommittee
10 May 2023

Christchurch
City Council 

CONFIRMED THIS 21st DAY OF AUGUST 2023

Unconfirmed

5. Ōtākaro Avon River Corridor Assessment Framework

Reference / Te Tohutoro: 23/1198976

Report of / Te Pou
Matua:

Dave Little, Manager Residential Red Zone (david.little@ccc.govt.nz)

General Manager /
Pouwhakarae:

Mary Richardson, General Manager Citizens & Community
(Mary.Richardson@ccc.govt.nz)

1. Nature of Decision or Issue and Report Origin

- 1.1 This decision establishes an assessment framework for members to evaluate projects and proposals in alignment with the Regeneration Plan's intent.
- 1.2 This report has been staff-generated, in compliance with items 3.6-3.7 (Land Uses and Projects) in the ŌARC Co-governance Establishment Committee Terms of Reference / Ngā Rahina Mahinga.
- 1.3 The decisions in this report are of low significance in relation to the Christchurch City Council's Significance and Engagement Policy. The level of significance was determined as the framework simply builds on the principles developed via the Regeneration Plan and does not materially impact those.

2. Officer Recommendations Ngā Tūtohu

That the Ōtākaro Avon River Corridor Co-governance Establishment Committee:

1. Adopt the Ōtākaro Avon River Corridor Assessment Framework, included as Attachment A to this report.

3. Reason for Report Recommendations Ngā Take mō te Whakatau

- 3.1 The Ōtākaro Avon River Corridor Regeneration Plan presents a vision for the future of the River Corridor. It emphasises a restored natural environment, and strengthened connection between people, the river and the land.
- 3.2 This has been jointly funded by central government and Christchurch City Council, and progress is well underway on delivery. As all land has transferred from LINZ now, there is significant community expectation that the vision will start to come to life.
- 3.3 The Regeneration Plan contains a variety of guiding principles, including;
 - A Vision
 - Objectives for Christchurch
 - Objectives for New Zealand
 - Seven individual Corridor-based objectives
 - Up to eight bullet points under each objective
- 3.4 While the principles provide useful information and guidance, they do not provide governance with a concise format to assess projects and third-party proposals against. They also do not provide guidance on how they might be applied, in an assessment sense.
- 3.5 The assessment framework, included as **Attachment A** has been developed to address this.

4. Alternative Options Considered Ētahi atu Kōwhiringa

Not developing an assessment framework.

4.1 Advantages

- None identified.

4.2 Disadvantages

- Assessment of projects and proposals would be complex and be carried out without any specific guidance on how they are to be used (for instance, do projects have to comply with *all* objectives, or is there a hierarchy?).

5. Detail Te Whakamahuki

- 5.1 The Regeneration Plan was widely consulted on, and the objectives that are contained within it represent a broad reflection of our local community's views.
- 5.2 To distil these objectives into an assessment framework, the whakatauki "*Ka mua, ka muri*" meaning "walking backwards into the future" was applied. The Corridor provides a constant reminder of the risks inherent of not looking to the past to inform thinking. This piece of work is included for reference as **Attachment B**.
- 5.3 Following this, a draft of the framework was workshopped and recommendations for a final draft made. These changes have been included, and a check against the principles and objectives of the Regeneration Plan carried out, to make sure that all the ideas from that document are reflected in the framework. The assessment framework is included as **Attachment A**.
- 5.4 We have considered how the framework might be applied to individual projects, not all of which will necessarily be able to comply with all aspects due to their scope, remit or area of responsibility. Details are included in the advice notes provided in Attachment A, but in summary:
 - Most 'weight' would be put on biophysical aspects, as these respond to environmental factors out of our control, with ecological restoration aspects prioritised after that.
 - These two aspects set the parameters for all other aspects to be considered, i.e how they fit within the biophysical and ecological parameters).
- 5.5 For clarity, proposals will not need to meet all criteria. For instance, projects located on the 'landward' side of long-term stopbanks will not necessarily need to *improve protection of life, property and the built environment*. However the framework will require applicants to address every aspect and explain the rationale behind any omissions. Co-governance members will then decide whether this is reasonable as part of their overall assessment.

The decision affects the **Waitai Coastal-Burwood-Linwood Community Board** area.

6. Policy Framework Implications Ngā Hīraunga ā- Kaupapa here

Strategic Alignment Te Rautaki Tīaroaro

- 6.1 This report supports the [Council's Long Term Plan \(2021 - 2031\)](#):
- 6.2 Parks, Heritage and Coastal Environment

6.2.1 Activity: Otakaro Avon River Corridor

- Level of Service: 6.8.12.1 Implementation of the Otakaro Avon River Corridor Regeneration Plan (Green Spine). Council-led capital investment - Progress integrated Green Spine programme (Parks, Water and Transport) as per the Implementation Plan.
- Target: 90 % of approved work programmes delivered in the year funded

Policy Consistency Te Whai Kaupapa here

6.3 The decision is consistent with Council's Plans and Policies, being a mechanism for assessing delivery of the Regeneration Plan.

Impact on Mana Whenua Ngā Whai Take Mana Whenua

6.4 This decision will impact projects in, on and around an ancestral land or a body of water or other elements of intrinsic value; therefore, this decision specifically impacts Mana Whenua, their culture and traditions.

6.5 Accordingly, Mana Whenua members have led this piece of work.

Climate Change Impact Considerations Ngā Whai Whakaaro mā te Āhuarangi

6.6 This Framework elevates climate change considerations to the primary level of consideration. This is reflective of the vulnerability of the Corridor to impacts, as well as the long-term, intergenerational world view held by Mana Whenua.

Accessibility Considerations Ngā Whai Whakaaro mā te Hunga Hauā

6.7 Accessibility considerations are also included in the Framework.

7. Resource Implications Ngā Hīraunga Rauemi

Capex/Opex Ngā Utu Whakahaere

7.1 As this is a high-level mechanism for assessment, there are no CAPEX or OPEX considerations.

Other He mea anō

7.2 There are no other issues.

8. Legal Implications Ngā Hīraunga ā-Ture

Statutory power to undertake proposals in the report Te Manatū Whakahaere Kaupapa

8.1 No specific proposals are included in this decision which require statutory powers.



Other Legal Implications Ētahi atu Hīraunga-ā-Ture

8.2 There is no legal context, issue or implication relevant to this decision.

9. Risk Management Implications Ngā Hīraunga Tūraru

9.1 As this is a high-level mechanism for assessment, there are no Risk Management implications.

Attachments Ngā Tāpirihanga

No.	Title	Reference	Page
A 	Ōtākaro Avon River Corridor Assessment Framework	23/1212046	23
B 	Ōtākaro Avon River Corridor Framework Discussion	23/1212048	25

In addition to the attached documents, the following background information is available:

Document Name – Location / File Link
Not applicable

Confirmation of Statutory Compliance Te Whakatūturutanga ā-Ture

Compliance with Statutory Decision-making Requirements (ss 76 - 81 Local Government Act 2002).

(a) This report contains:

- (i) sufficient information about all reasonably practicable options identified and assessed in terms of their advantages and disadvantages; and
- (ii) adequate consideration of the views and preferences of affected and interested persons bearing in mind any proposed or previous community engagement.

(b) The information reflects the level of significance of the matters covered by the report, as determined in accordance with the Council's significance and engagement policy.

Signatories Ngā Kaiwaitohu

Author	David Little - Manager Residential Red Zone
Approved By	Andrew Rutledge - Head of Parks Mary Richardson - General Manager Citizens & Community

[Residential Red Zone]

Memo

Date: 31 July 2023

Assessment Framework for projects in the Ōtākaro Avon River Corridor.

This Assessment Framework provides a template for members of the Ōtākaro Avon River Corridor co-governance establishment committee to evaluate projects and proposals in alignment with the Regeneration Plan's intent. Applicants are to consider the requirements below, and carry out a self-assessment as part of their project planning.

Weighting and application

Due to the scope or remit of each project, it may not be possible to meet all of the requirements below, however each matter should be addressed, and an explanation be put forward in instances where it was not achievable.

The list below has three 'weighting' categories, however there is no ranking within these categories, beyond the categories themselves.

Most 'weight' is put on 'biophysical' aspects, as these respond to environmental factors out of our control. These are noted in the first (blue) table. Ecological restoration aspects are prioritised next, and these are listed in the green table. Cultural and community factors follow, in the dark grey table, and these should be assessed with respect to their fit within the biophysical and ecological parameters.

Assessment Framework table

Item	Biophysical
a.	Do they take an intergenerational view into account, including the long-term impacts of climate change?
b.	Do they improve protection of life, property and the built environment?

Item	Ecological
c.	Do they contribute to, or enhance, peoples' capacity to engage in mahinga kai practices?
d.	Do they contribute to, or enhance, the regeneration and reconstruction of the ecosystems as an interconnected mosaic in a way that represents the former delta?

Item	Cultural and Community
e.	Do they contribute to, or enhance, the connections that generations of communities hold to the area?
f.	Do they test or provide innovative ideas or ways of living that may be transferred beyond the OARC, particularly relating to life on a floodplain?
g.	Do they give contemporary and innovative effect to Ngāi Tūāhuriri deltaic culture?
h.	Do they support our local economy, either by attracting domestic and international visitors or by encouraging local manufacturing and innovation.
i.	Do they support the growth of healthy communities, and encourage participation in recreation, leisure and learning?

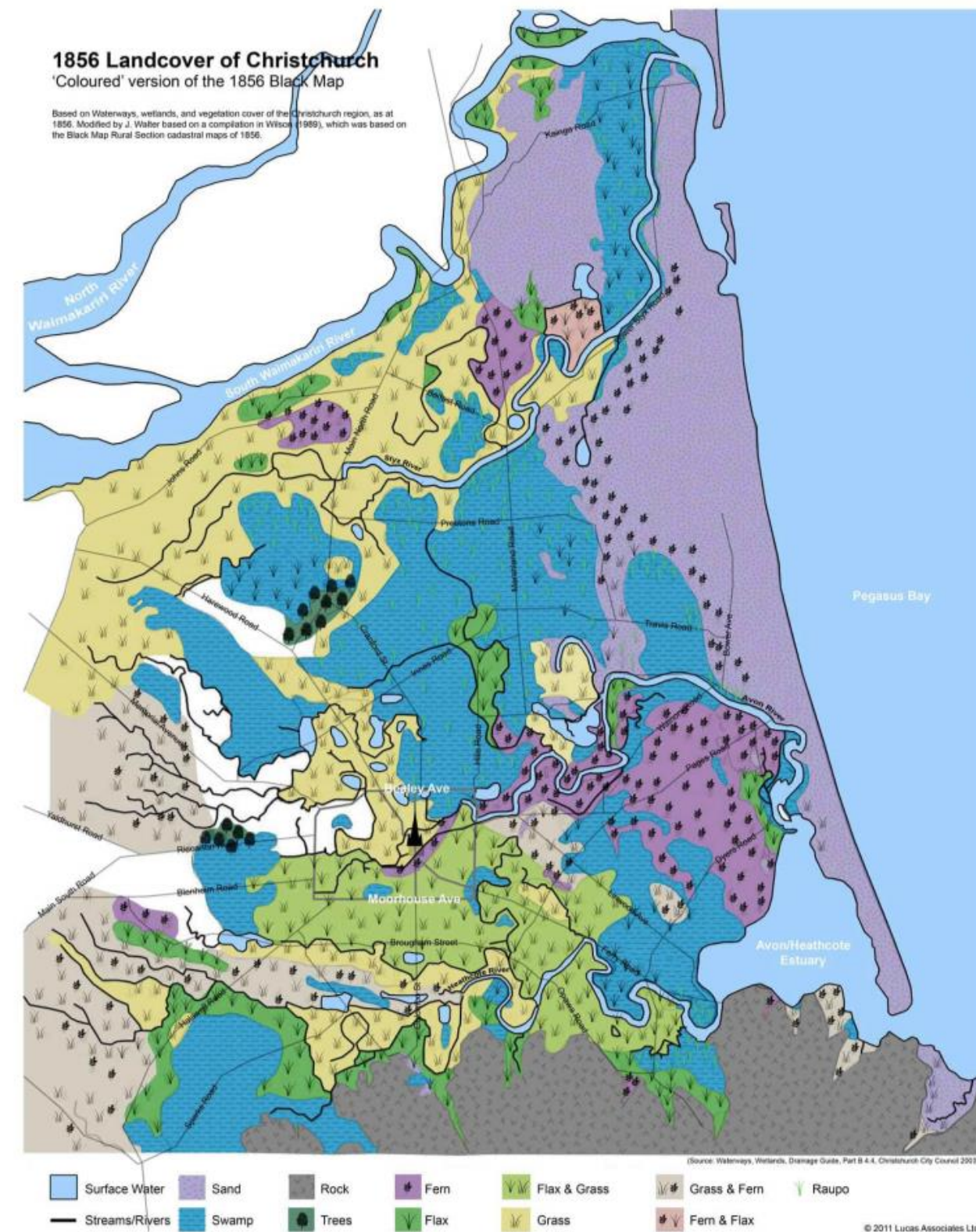
Ōtākaro Avon River Corridor

—
Framework Discussion Workshop
May 2023



HISTORICAL CONTEXT.

The current area of the Ōtākaro Avon River Corridor (OARC) once constituted a small area of an extensive braid-delta system, made up of interconnected networks of forest groves, abundant wetlands, rivers and streams, spring-fed coastal lagoons, and estuaries, that stretched from Kaiapoi in the north to Taumutu in the south. Approximately 35% of what is now Christchurch city was covered in surface water.



HISTORICAL CONTEXT.

The OARC was once an abundant mahinga kai, generating prolific game and fisheries that sustained Ngāi Tūāhuriri and provided for economic self-determination.

Ngāi Tūāhuriri cosmology is intertwined with the OARC with the historic, streams, rivers, estuary, and wetlands constituting Wai Tipuna, or ancestor-relations. Furthermore, the area contains wahi tapu and wahi taonga, of deep cultural importance.

Dotted throughout the delta and OARC were nohoanga, or temporary settlements, which provided seasonal bases for foraging, fishing, and hunting.

The cultural 'codes' of how to live within the delta were (and still are) contained in the stories, practices, knowledge, and art of Ngāi Tūāhuriri.

The ability of Ngāi Tūāhuriri to practice their culture was dependent upon the existence of a vibrant braid-delta system.



HISTORICAL CONTEXT.

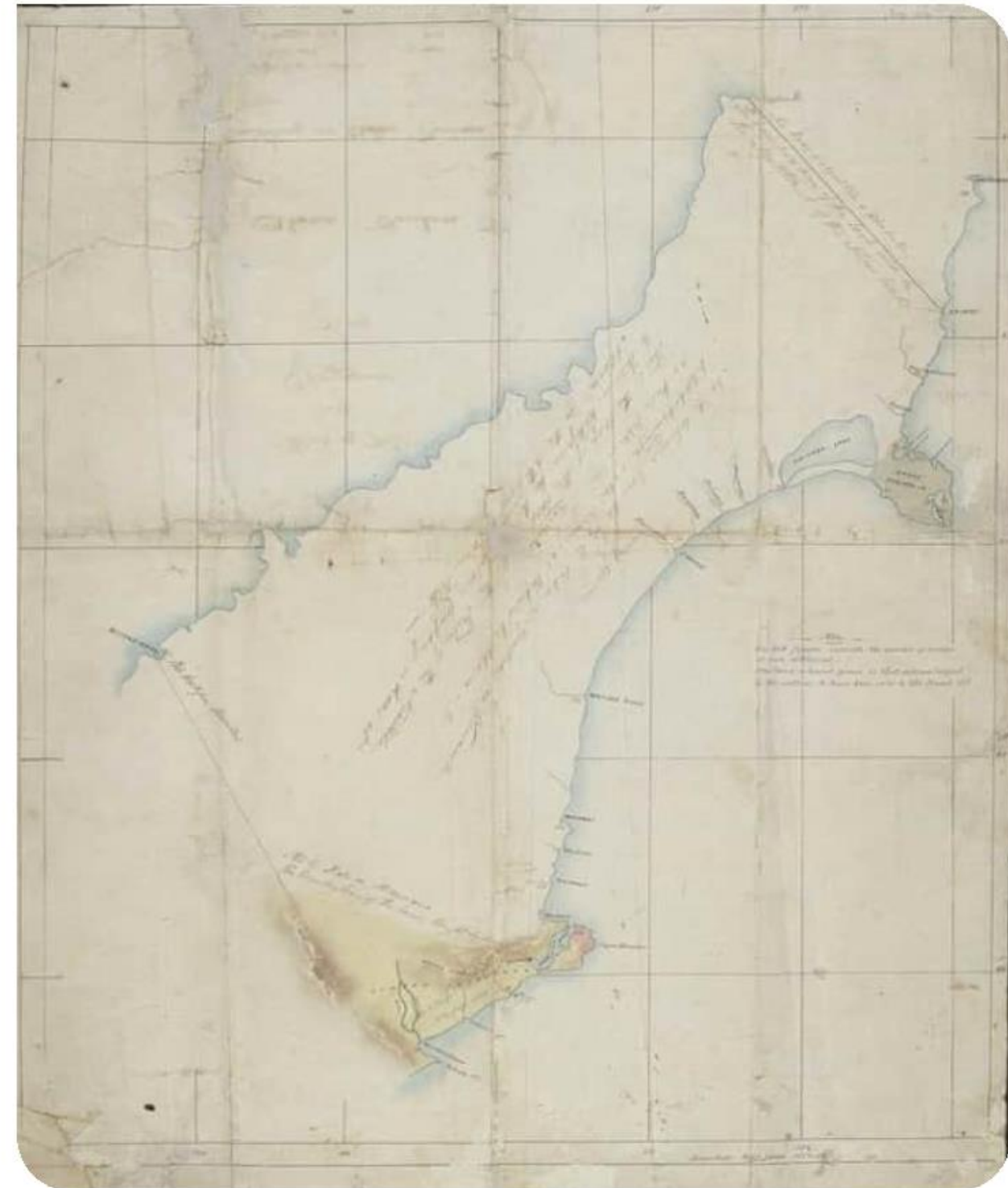
Under Kemp's Deed, in exchange for providing land for settlement Ngāi Tūāhuriri was guaranteed ongoing access to their mahinga kai. In essence this required the New Zealand Crown to safeguard the braid-delta system as a means for Ngāi Tūāhuriri to maintain its mahinga kai and in turn its economic, cultural, and political self-determination.

Instead, the braid-delta system, including the OARC, was almost entirely drained and modified for farming and urban development.

The agreement to maintain access to mahinga kai was breached.

In response to the significant loss of mahinga kai associated with the delta, the Ihutai Reserve, located in the lower reaches of the OARC, was established in 1868 by the Crown with ownership vested in whanau members of Ngāi Tūāhuriri and Ngati Wheke.

In 1956 the Ihutai Reserve was taken under the public works act for the establishment of the Bromley sewerage treatment plant, further alienating manawhenua and compounding grievances.



CURRENT CONTEXT.

Ground in the OARC subsided during the Christchurch earthquakes, significantly increasing flood risk. Private land in the OARC purchased by the Crown as repair was uncertain. This was a politically contentious process. Many property owners were reluctant to move from their homes and communities, and in many cases, compensation was considered inadequate. This led to the formation of the red zone.

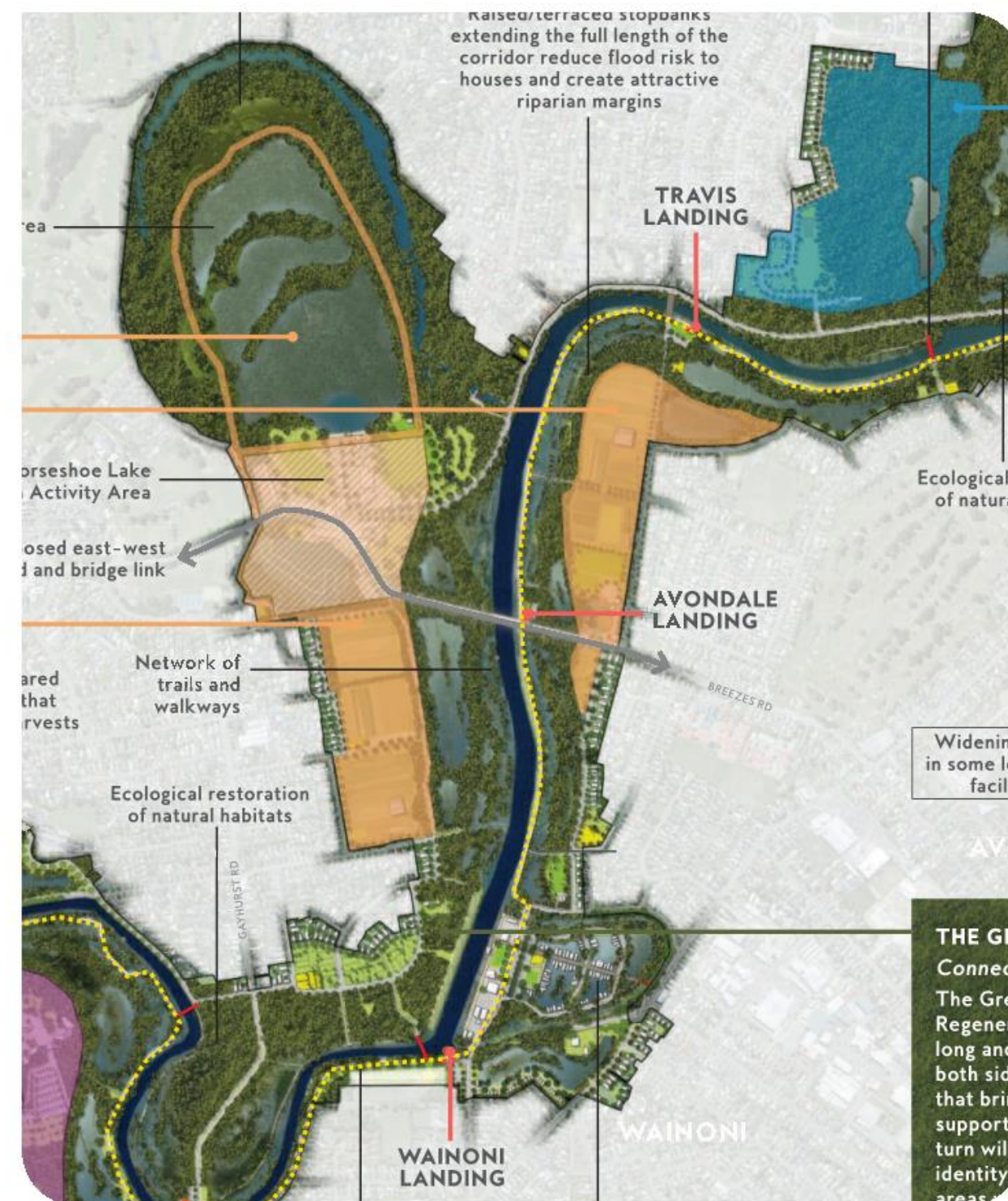
A plan for the red zone was created by Regenerate Christchurch - a body established by central government with limited local government power - for the establishment of the OARC.

The plan has captured many elements of the former delta system that was once present in the OARC area, including the natural regeneration and reconstruction of wetlands, streams, lagoons, forests and coastal estuarine areas. This is coupled with engineering solutions to mitigate flood risk and treat stormwater entering the reconstructed deltaic system. Further, a range of recreational facilities are planned.

A range of third-party proposals have also been developed for projects within the OARC.

A process for transferring ownership of the OARC from the central government to council is nearing completion.

A co-governing relationship is under establishment between the CCC and Ngāi Tūāhuriri to guide the implementation of the OARC in recognition of treaty principles and the deep and abiding connections manawhenua and the diverse communities of Christchurch have to the area.



FUTURE CONTEXT.

The OARC development may be considered an intergenerational project given its scale and the timeframes involved in ecosystem reconstruction. From this perspective the OARC should be viewed with at least a 100-year timeframe in mind.

With a long-term view in mind climate change scenarios should be built into any planning decision making framework.

- There are a range of sea level rise scenarios, however a 1m sea level rise is realistically anticipated by 2100. This has implications for parts of the OARC where the water table is currently near the surface, meaning that significant areas of the OARC will become inundated and the transition from freshwater to saline conditions will move upstream.
- It is also anticipated that climate change induced extreme events will increase in severity, including heavy rainfall and drought events. Future scenarios show that without intervention, much of the OARC will become inundated during extreme rainfall and tide events.
- These scenarios impact the natural regeneration and ecosystem reconstruction plans, engineering solutions for mitigating flood risk and treating stormwater, the nature of recreational facilities, and third-party proposals.



FUTURE CONTEXT.

The climate change induced sea level rise and extreme flood events will also impact property more broadly in eastern Christchurch beyond the OARC boundaries. In effect these changes will lead to the reformation of the delta in eastern Christchurch, albeit as a more saline system than it was historically. Some thought should be given to the relationship between the OARC and these anticipated changes beyond its boundaries – given that planning solutions developed in the OARC may be transferred to other areas undergoing inundation.

The planned ecosystem reconstruction within the OARC provides an opportunity for a small section of the once abundant braid delta system to return. This meets the interests and values of many communities including, recreationalists, conservationists, and manawhenua.



FUTURE CONTEXT.

The ability of the diverse communities of Christchurch to express their values and interests is dependent upon the OARC achieving the following:

- Capturing as authentically as possible the former delta ecosystems that were once present in the area as an interconnected mosaic
- Through the natural regeneration and reconstruction of ecosystems the re-establishment of mahinga kai
- The development of engineering solutions that work to support ecosystem regeneration and reconstruction (e.g., treating stormwater entering the system)
- The allowance for nohoanga within the OARC
- The protection of wahi tapu and wahi taonga
- The allowance for forms of water and pedestrian transport in OARC to support cultural activities
- The incorporation of cultural symbols, art, and design principles to effectively represent the profound and enduring bonds that generations of communities hold to area.
- The fostering of new initiatives that showcase Christchurch on a global scale as a dynamic, innovative delta city that respectfully acknowledges and celebrates both its indigenous and settler cultures.



SUGGESTED ASSESSMENT CRITERIA.

It is recognised that there is a need to ‘contain’ the deltaic system to protect lives, buildings and property from inundation associated with sea level rise and flood events. Consequently, grey infrastructure solutions designed for containment should work, as far as practicable, in synergy with blue-green infrastructure (i.e ecosystem regeneration and reconstruction). It is determined that plans and third-party proposals should be evaluated according to the following criteria:

- Do they contribute to, or enhance, the regeneration and reconstruction of ecosystems as an interconnected mosaic in a way that represents the former delta?
- Do they contribute to, or enhance, the capacity of Ngāi Tūāhuriri to engage in mahinga kai practices?
- Do they contribute to, or enhance, Ngāi Tūāhuriri’s cultural presence within the area?
- Do they take an intergenerational view into account, including the long-term impacts of climate change?
- Do they provide innovative solutions that may be transferred beyond the OARC to adjacent areas?
- Do they protect life, property and the built environment?
- Do they give contemporary and innovative effect to Ngāi Tūāhuriri deltaic culture?
- Ngāi Tūāhuriri recognises the recreational value of the area to the people of Christchurch, and as such recreational values should be taken into consideration without compromising the integrity of the deltaic system.



Karakia Whakamutunga

Kia whakairia te tapu

Kia wātea ai te ara

Kia turuki whakataha ai

Kia turuki whakataha ai

Haumi e. Hui e. Tāiki e