

**Waihoru**  
**Spreydon-Cashmere-Heathcote Community Board**  
**MINUTES ATTACHMENTS**

---

**Date:** Thursday 13 July 2023  
**Time:** 4 pm  
**Venue:** Boardroom, Beckenham Service Centre,  
66 Colombo Street, Beckenham

---

<b>TABLE OF CONTENTS</b>	<b>PAGE</b>
<b>4.1 Garden Development in the Community</b>	
A. Item 4.1 Public Forum - Garden Development in the Community presentation .....	3
<b>5.2. Deputations by Appointment - Jamie Cummings - Duncan Street - Proposed bus stop markings</b>	
A. Item 5.2 Deputation - Jamie Cummings - Duncan Street Proposed Bus Stop Markings presentation.....	12
<b>5.3 Deputations by Appointment - Lisa Hadfield - Duncan Street - Proposed bus stop markings</b>	
A. Item 5.3 - Deputation - Lisa Hadfield - Duncan Street Proposed Bus Stop Markings presentation .....	18
<b>14.1 Footpath on McCormacks Bay Road</b>	
A. Item 14.1 - McCormacks Bay Road - footpath .....	24

---



# **GARDEN IN PARK AND BACKYARD FOR PROMOTING BIODIVERSITY, HEALTH AND RECREATION**

## **SUPPORT FOR REDEVELOPMENT (SFD NZ)**

- 1. Tara Pande, Plant Science and Horticulture**
- 2. Bhagwan Yadav, Forest Economics**
- 3. Krishna Karki, Soil Science**
- 4. Narayani Tiwari, Social Science**
- 5. Bhubaneswor Dhakal, Health and Natural Resources**

## INTRODUCTION

- **Support for Development (SFD NZ), August 2012**
- **Participatory action research (collaborative research, education and action for change in social and environmental issues)**
- **Collaboration with national and local governments, community based and other related organizations to provide better services on nature relationships and its impact on health and happiness**
- **Inclusive and equitable quality services in *education and life skills training***

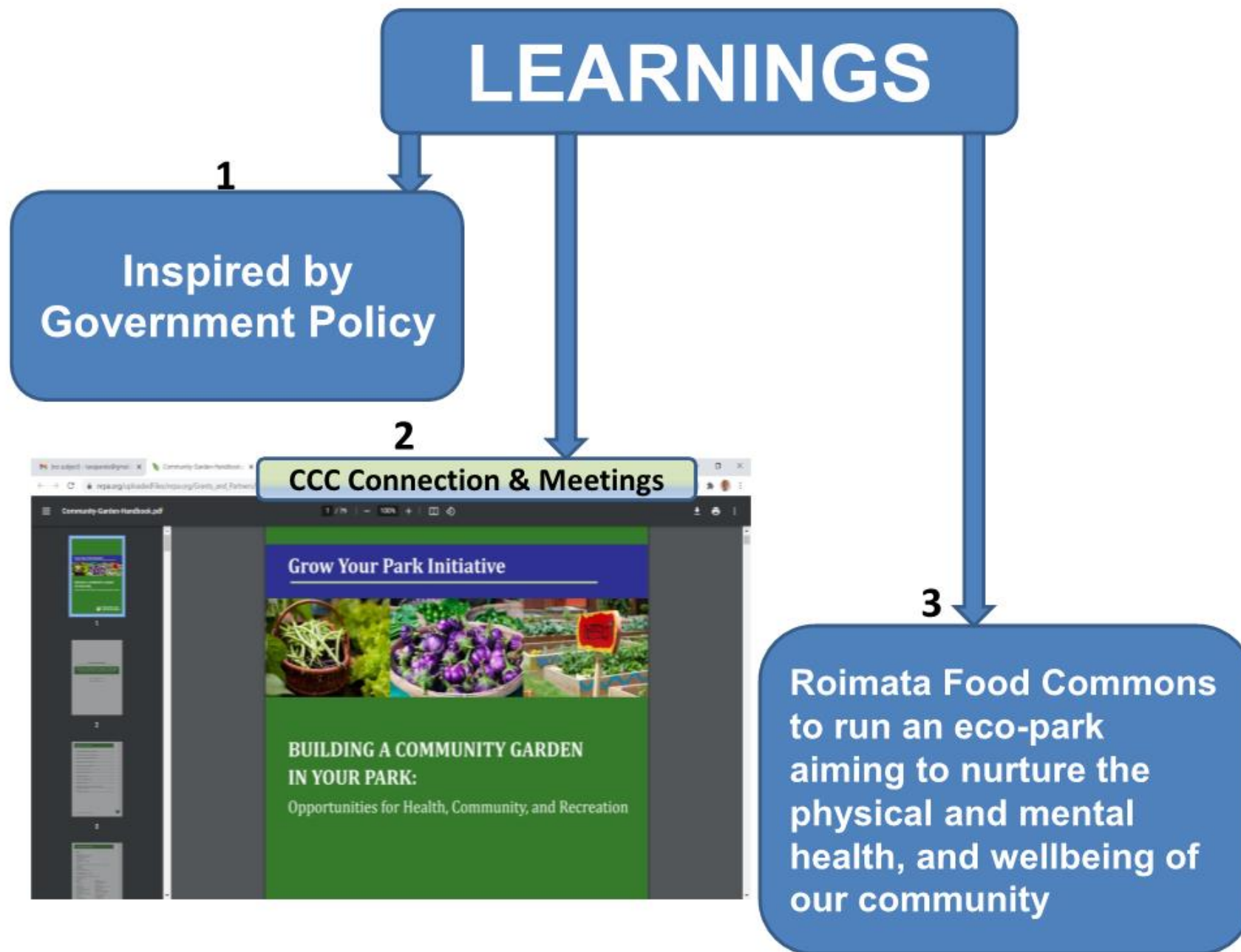
## NATIONAL POLICY

**The climate change (CC) policy of NZ government to drive towards low greenhouse gas emissions and climate resilience.**

**The CC framework focus on:**

- i. Leadership at home and internationally**
- ii. A productive, sustainable and climate-resilient economy**
- iii. A just and inclusive society**

**The Govt. aim is to plant one billion trees by 2028.**



## OUR FOCUS

- **Aim:** Add values on climate action by transforming our attitudes on environment, food and recreation for healthy and happy living
- **Expertise and capacity:** Managing Agro-forestry, organic vegetables, herbal/medicinal plants and heritage fruit/nut trees along with indigenous forest trees
- **Develop “Eco-Health Adventure Park (EHAP)”**
  - (a) An Ecosystem where native plants are protected and promoted,
  - (b) Learning and entertaining environment within the park created for all
  - (c) Represent multiethnic cultural environment, a place where everybody feels pride and dignity.



## PROCESS

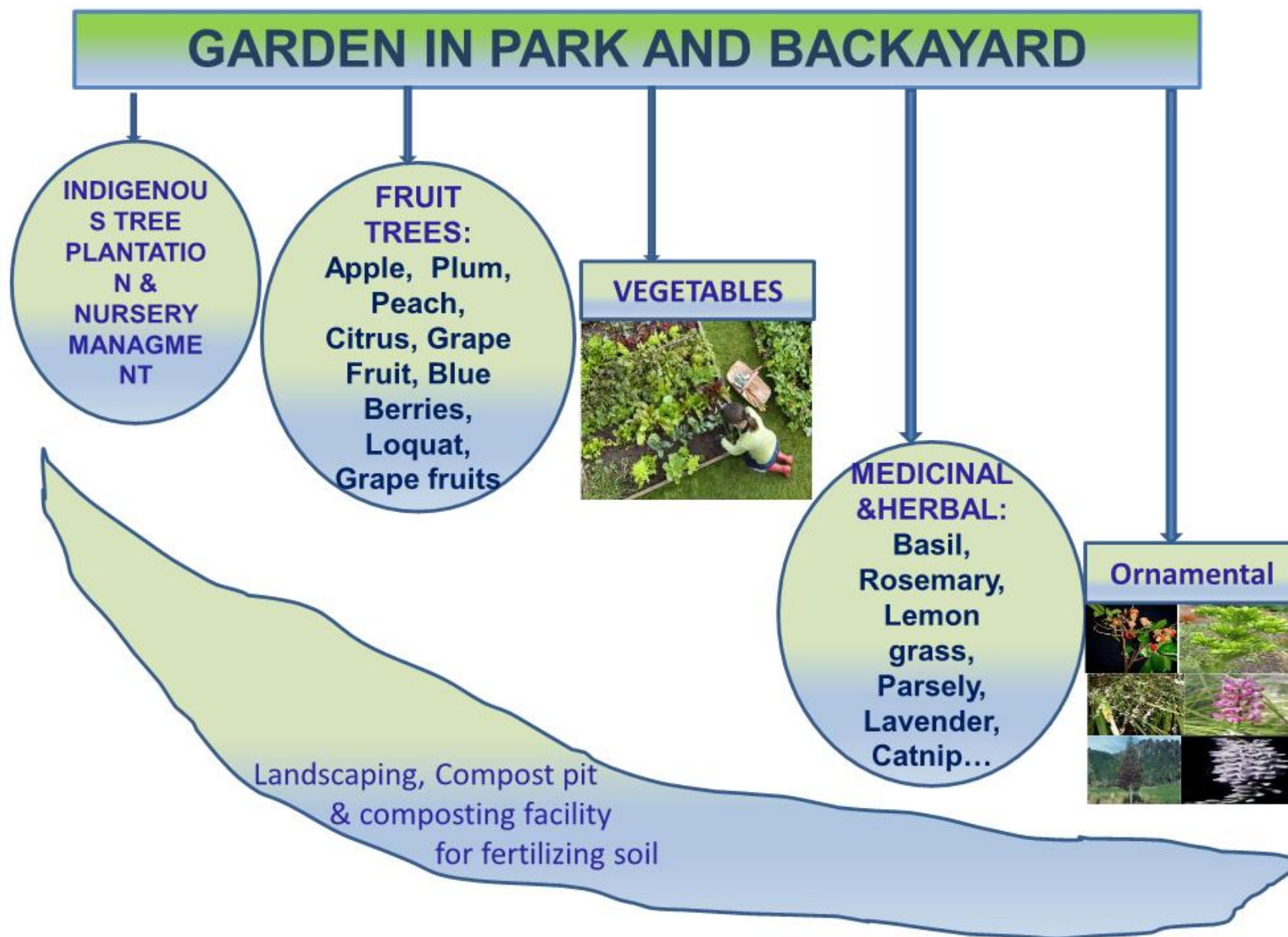


- ❖ Both Park and Home gardening involves growing fruit, vegetables and herbs for consumption, recreation and economic benefit as well as creating aesthetics and diversity for bird and insect life with attractive flower beds
- ❖ Expert team work in collaboration with Community group
- ❖ Entrepreneurs in the community will join the network of farmers and growers. Participate in a farmers' market or food co-op.
- ❖ Disseminate information to other parks, recreation agencies, and other communities.
- ❖ Reconnect science, communities and culture



## **“ECO-HEALTH ADVENTURE PARK (EHAP)”** **-Characteristics & Values**

- **Better collaboration and high level communication**
- **Strong relationship with the Local community and related organizations**
- **Promoted health and wellbeing (organic healthy food + income), recreation (managed environment) and income (enterprise) opportunities.**
- **Learning centre for all age groups**
- **Creative, and experiment with new techniques, publication and dissemination of information**
- **In hand data to incorporate in planning local policy and strategy**
- **Sustainability (balancing social, economic & environmental)**



## What we have?

Established organization

Team of Experts

Localized knowledge and skills

## What We Need?

A Suitable Park (Residential community in close proximity)

Collaborating Organizations

Funding Source

## DISCUSSION

Nga Mihi 🙏 Thank You

# Duncan Street - Proposed Bus Stop Markings

Safety acknowledgement and concerns

5 Duncan Street

Author: Jamie Cummings

# Discussion Outline



Site Overview



Proposal



Street Vehicle Movement Analysis



Current State Assessment

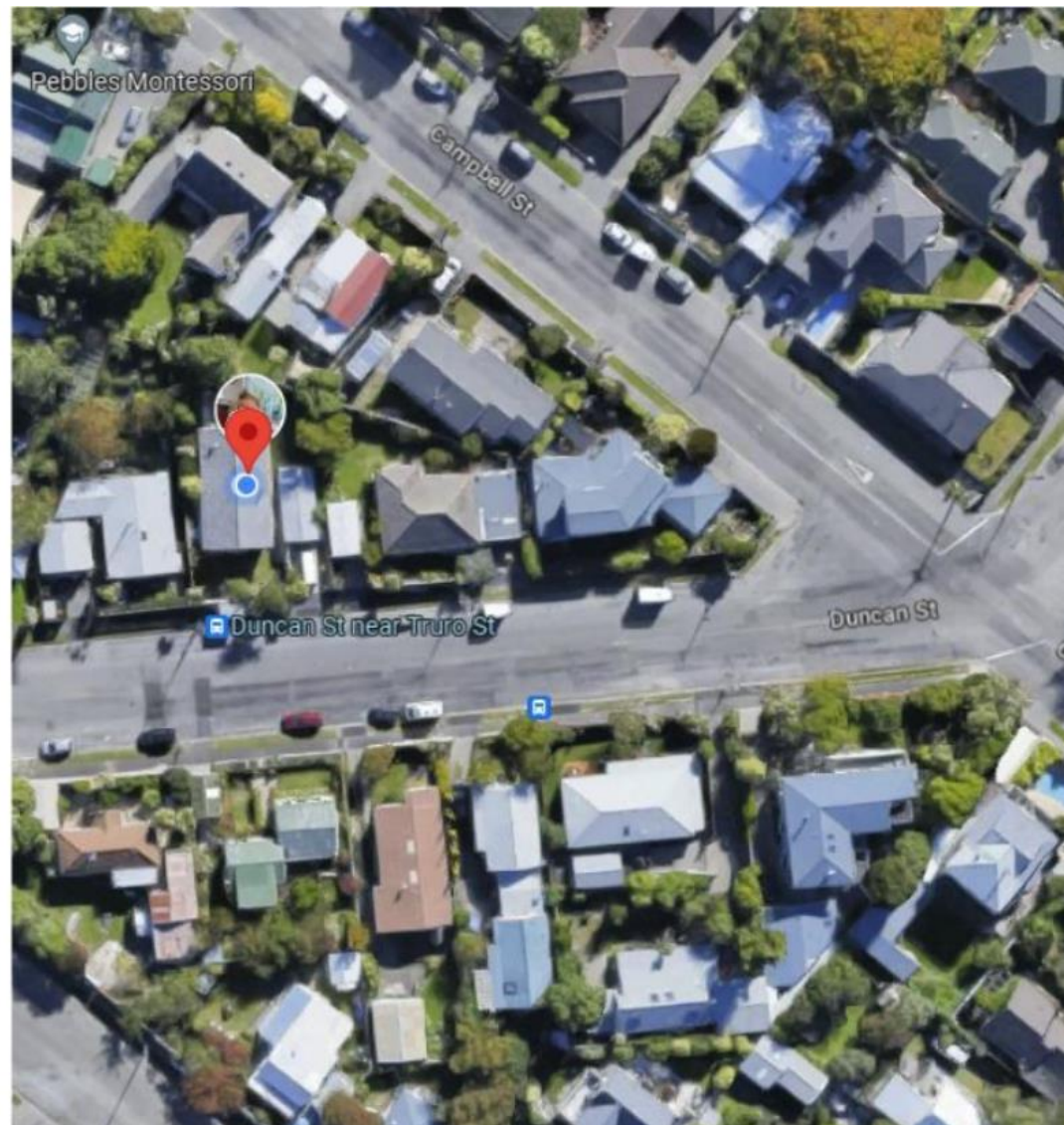


Safety concerns



## Site Overview - Duncan St near Truro St Stop ID: 42755

- Bus Stop Supports expected resident catchment
- Peek use between 7am to 9am Monday to Friday only
- The demographics of the street is primarily Retirees' and Families.



## Proposal

- Both proposed option remove off street parking from outside 5 Duncan Street
- Other change impair other houses in Duncan Street





Type	Count	%	Notes
Timetabled Bus Movements	180	47%	Excluding 2 or 3 special school services
Assumed Resident vehicle movements	52	14%	Assume 13 Houses, 2 cars per house, 2 mvmts per day
Assumed throughfare vehicle moments	150	39%	3 x resident movements
Total	352		

Current  
State  
Assessment

# Safety concerns

- As observed on the prior slide, the majority of vehicle movements are Metro services and throughfare movements.
- With the proposed changes [either option]. Off-street parking will be a premium.
- Our primary safety concern is with the changes **making parking being a premium**. Residents on both sides of the street will be **forced to cross the road more frequently**. The demographics of the street is primarily Retirees' and Families.
- With the high speed throughfare movements on the street not from Duncan St residents, our primary concern is a that a child or elderly person will be stuck by a vehicle.
- Isolated safety issues associated with disembarking / embarking to a bus will happen far less frequently than residents crossing the road **creating a new far more serious safety hazard**

**Submission from Lisa Hadfield**

E: [REDACTED]

Mb: [REDACTED]

**Re Proposed Bus Stop and no stopping restrictions**

Option 1 – Duncan Street

TG142046 VMI

I have the following concerns regards the proposed changes.

- Several families that have no off street parking.
- Reduced street parking will directly impact them.
- Some have young children. (NO's [REDACTED]). Travelling further to reach their vehicles with small children, particularly if they are having to manage them while carrying other items such as groceries poses a greater risk.
- There is a Volunteer Fire fighter at No [REDACTED] that parks on the road to give quicker access.
- The camber of the road outside 8a/b Duncan has a very high which makes entry/exit difficult in the current/proposed location. One resident fell out of her wheelchair exiting a bus.
- A local bus driver who has done this route for a number of years, that I spoke with, said very seldom do they stop on Duncan Street.
- The camber is better at the far end of the street on the south side.

***I would therefore like to suggest the following:***

**Suggested Option A**

Move the bus stop on the north side from the present local to the end of the street, suggested stop 1 on my plan.

Removal of the bus stop on the south side as there is a bus stop just around the corner on Wakefield Ave. See map page 5

**Suggested Option B**

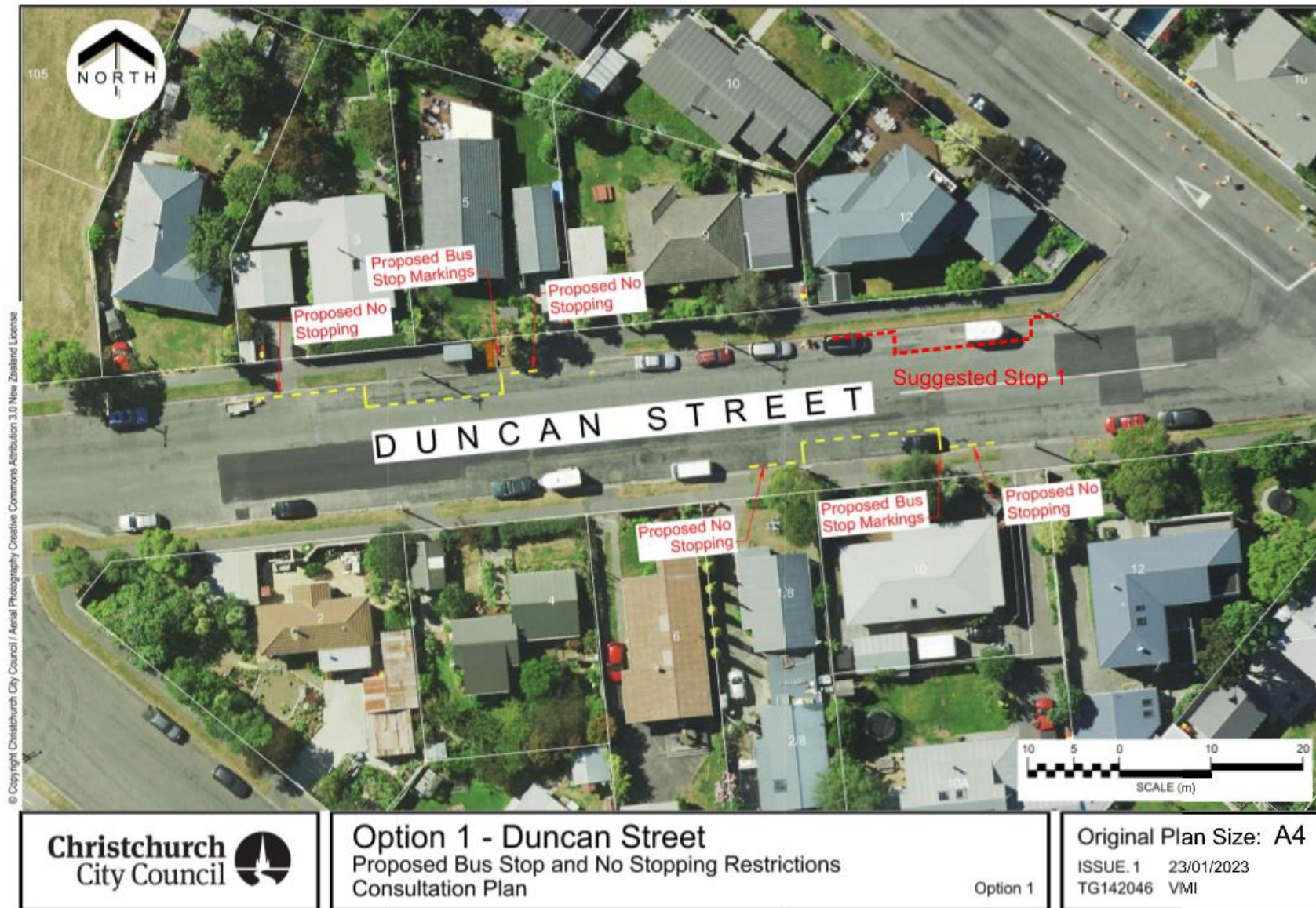
Move the bus stop on the north side from the present location to the end of the street, suggested stop 1 on my plan.

Move the bus stop on the south side from the present location to the end of the street, suggested stop 2 on my plan.

Sincerely

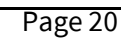
Lisa Hadfield

## Suggested Option A





## Attachment A Item 5.3



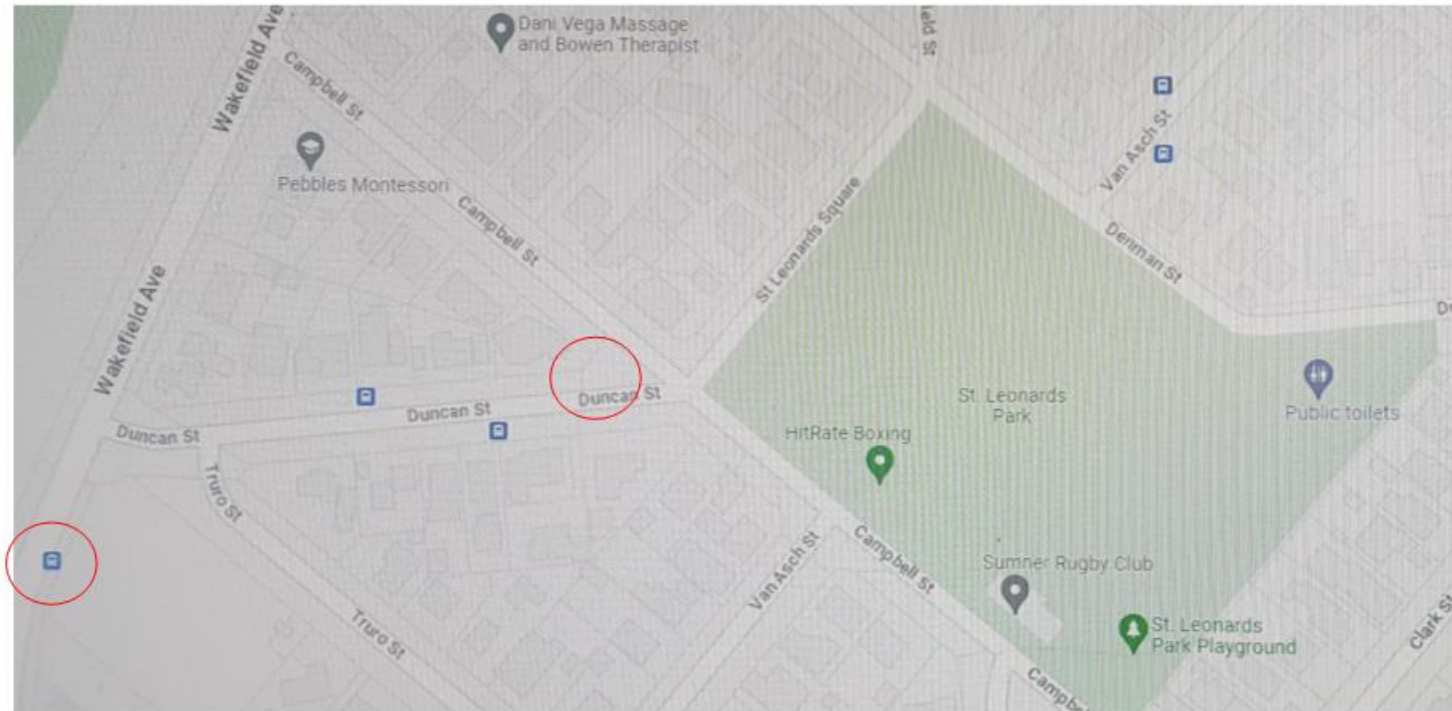








## Map showing location of suggested stops - Option A





Grass verge alongside Kids First Kindergarten,  
1 McCormacks Bay Road, Mt Pleasant

