

Waimāero
Fendalton-Waimairi-Harewood Community Board
MINUTES ATTACHMENTS

Date: Monday 10 July 2023
Time: 4.30 pm
Venue: Boardroom, Fendalton Service Centre,
Corner Jeffreys and Clyde Roads, Fendalton

TABLE OF CONTENTS	PAGE
4.1 Public Forum - Stephen Wood	
A. Stephen Wood - Public Forum Presentation.....	3
4.2 Public Forum - Bruce Irvine	
A. Bruce Irvine - Public Forum Presentation	7

Thoughts on cycle networks from how the “Wednesday Wheelies” get around the North & Northwest

Presentation to the Waimāero Fendalton-Waimairi-Harewood Community Board

Stephen Wood, July 2023

A bold plan: 2013



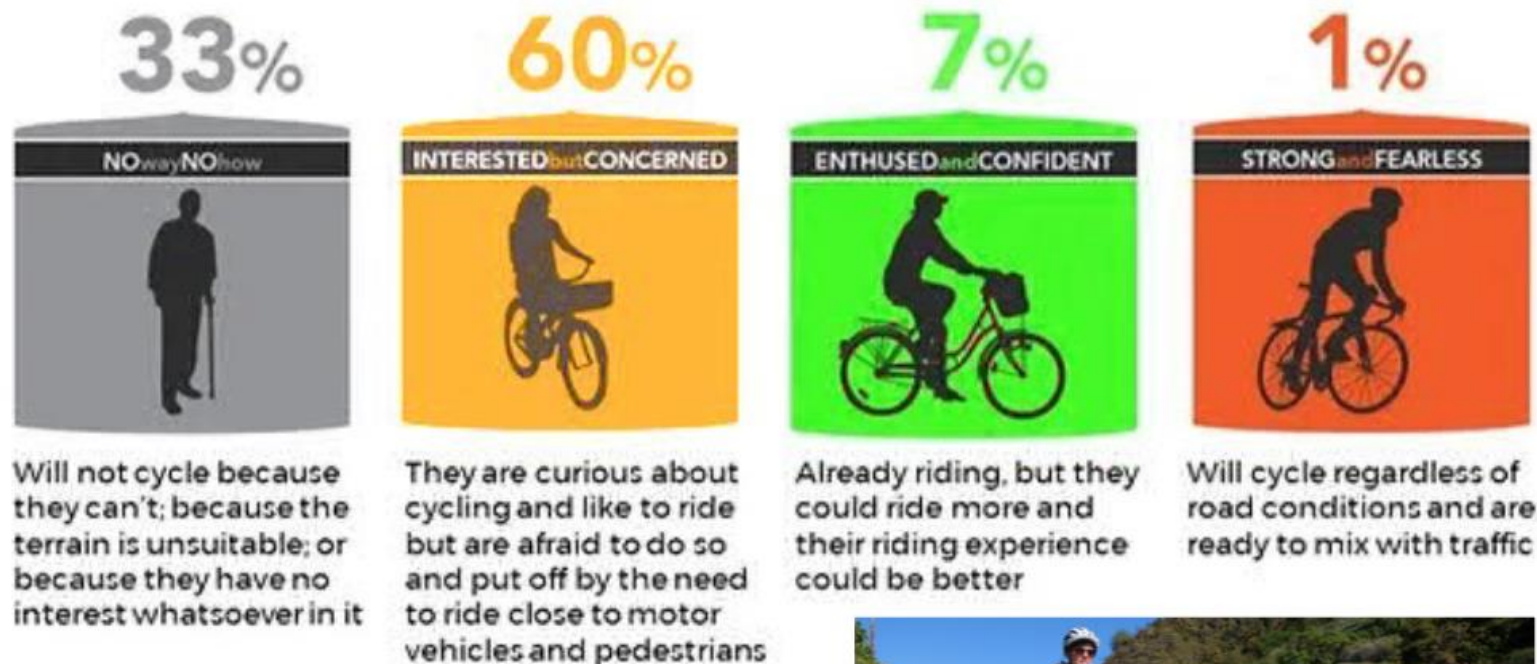
Figure 3.1. Future cycle network: major, local and recreational cycleways (Christchurch Transport Strategic Plan).

Ten years on - more done than not done, but northeast and northwest have big gaps

Major cycleways network – What’s been built and what’s coming



Attitude to cycling (types of cyclists)



These have different approaches to using cycling infrastructure - (& different attitudes to building it!)

NZTA Waka Kotahi, from Geller (2009)



'S&F' vs 'IbC' (photo: Simon Kennett)

Wednesday Wheelies

- Supported by St Albans Residents Association & Spokes Canterbury
- Has been running for just over 5 years, increasingly popular
- Wednesday mornings – demographics, retirees
- Catering to “Interested but Concerned” riders, city discovery
- Typical weekly turnout - 40±10 riders
- Group sizes – safer with 10-12 maximum - need group leaders



1st ride November 2017



March 2023

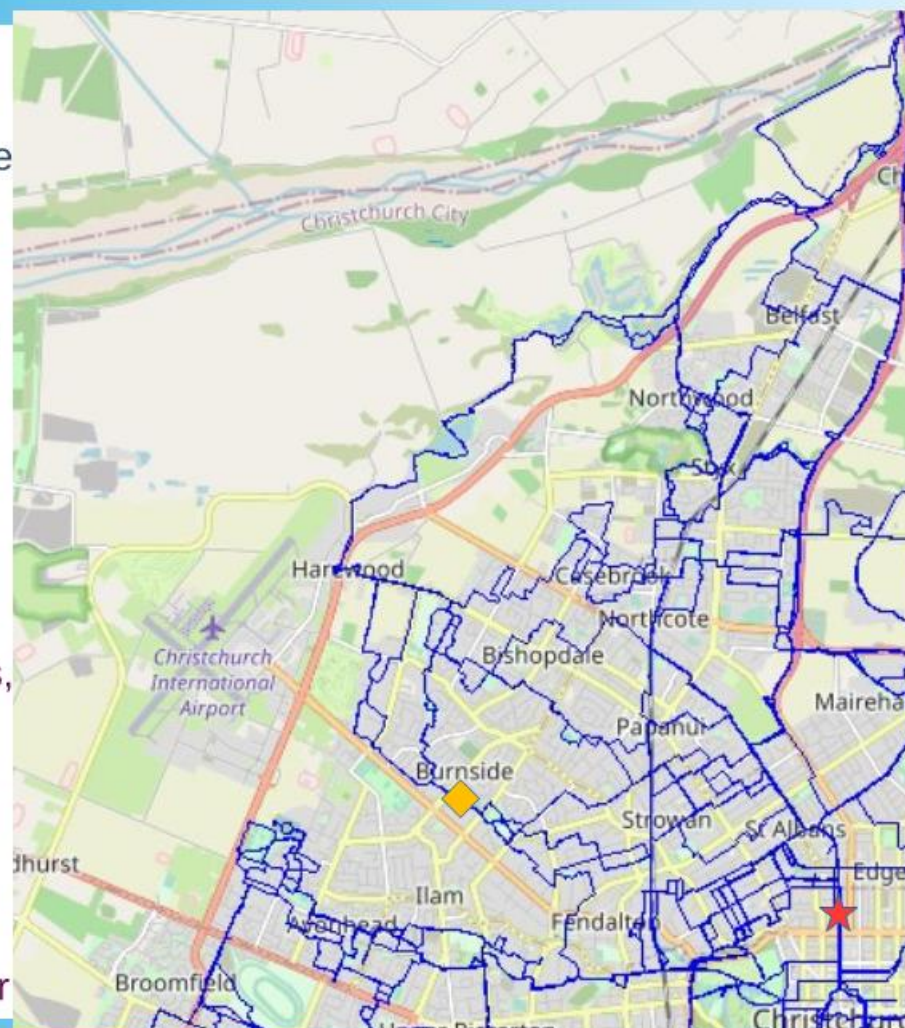


“WW” routes

- Using MCRs where they’ve been built
- Avoiding many arterials
- Finding connections, isolated infrastructure
- Lost connection – Cobham intermediate
- Back road routes – zig-zags
- Using some roads that need single file
- Getting out beyond SH1 – at underpasses
- A few “tricks” needed in places
- are we connecting to local hubs/places?
- are we typical riders?

Recommendations

- MCRs (W2W, NWA) will improve things
- Then look at secondary connections, i.e. links to destinations, hubs, schools, shops, sports facilities, parks, etc
- Is reassigning road space an option?
- “Quick -build” or interim infrastructure?
- Secure bike parking at destinations
- Safer speeds – neighbourhoods, schools
- Caution with using shared infrastructure
- Events to promote cycling: ABC, Biketober

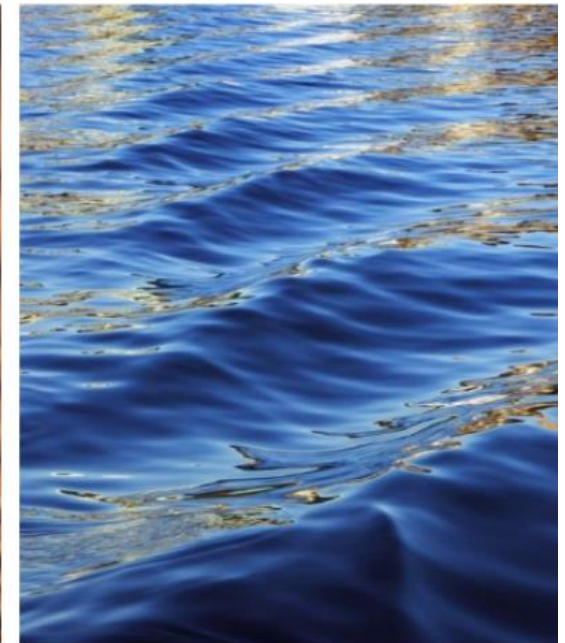




NEPAL RESERVE

Community focused development project:
Native forest walking park and activities.

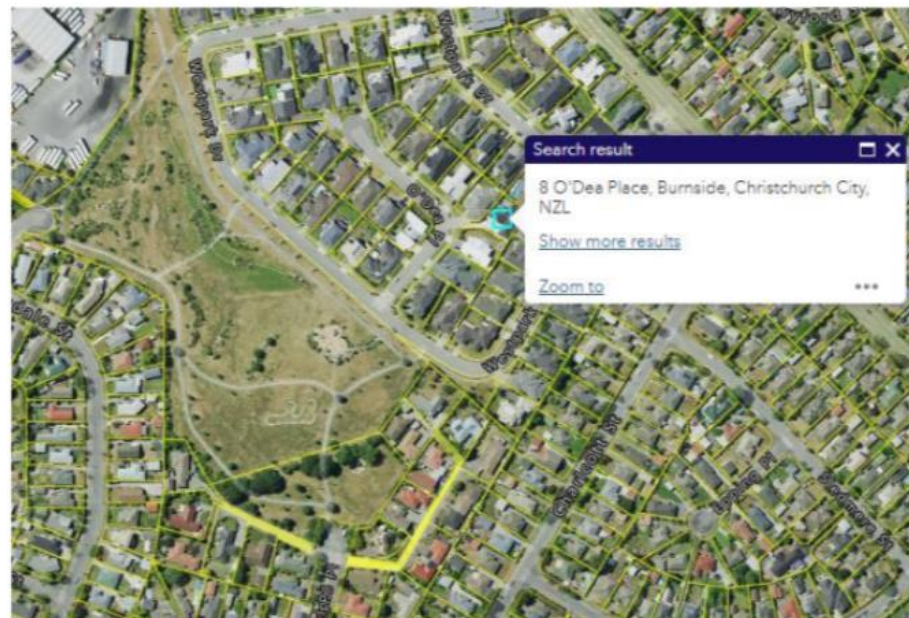
10th July 2023
Presentation to:
Waimāero Fendalton-Waimairi-Harewood
Community Board



Community focused development for a Native Forest Walking Park

- Nepal Reserve its location and history
- Current activities
- Future concepts
- How do we get there.
- Who am I?

- Bruce Irvine
- Resident
- Senior Advisor Risk Reduction
 - Fire and Emergency New Zealand



Nepal Reserve a History 1880's to Present



3

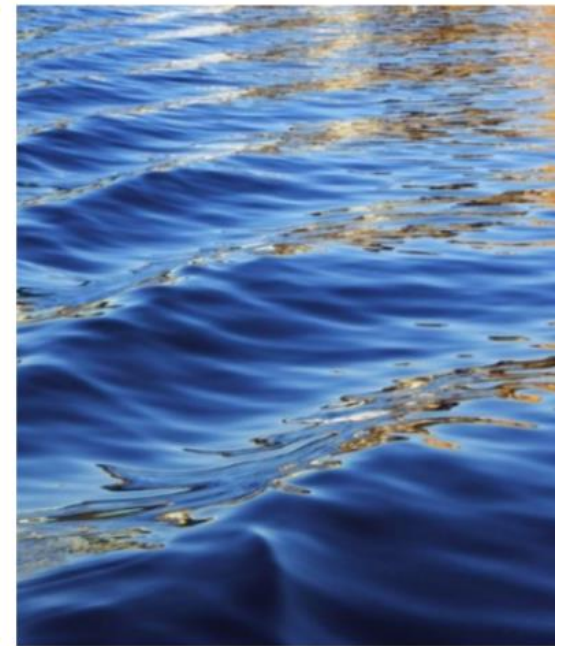
7/11/2023

Add a footer



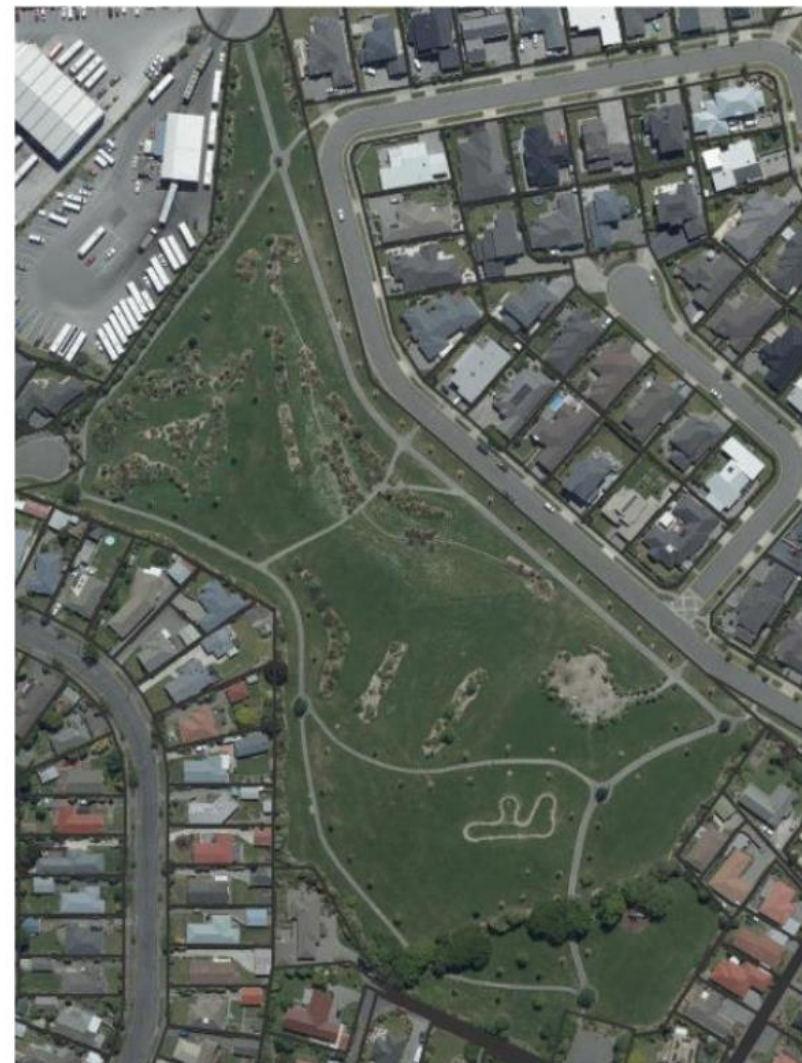
Current Activities

Uses of the Reserve



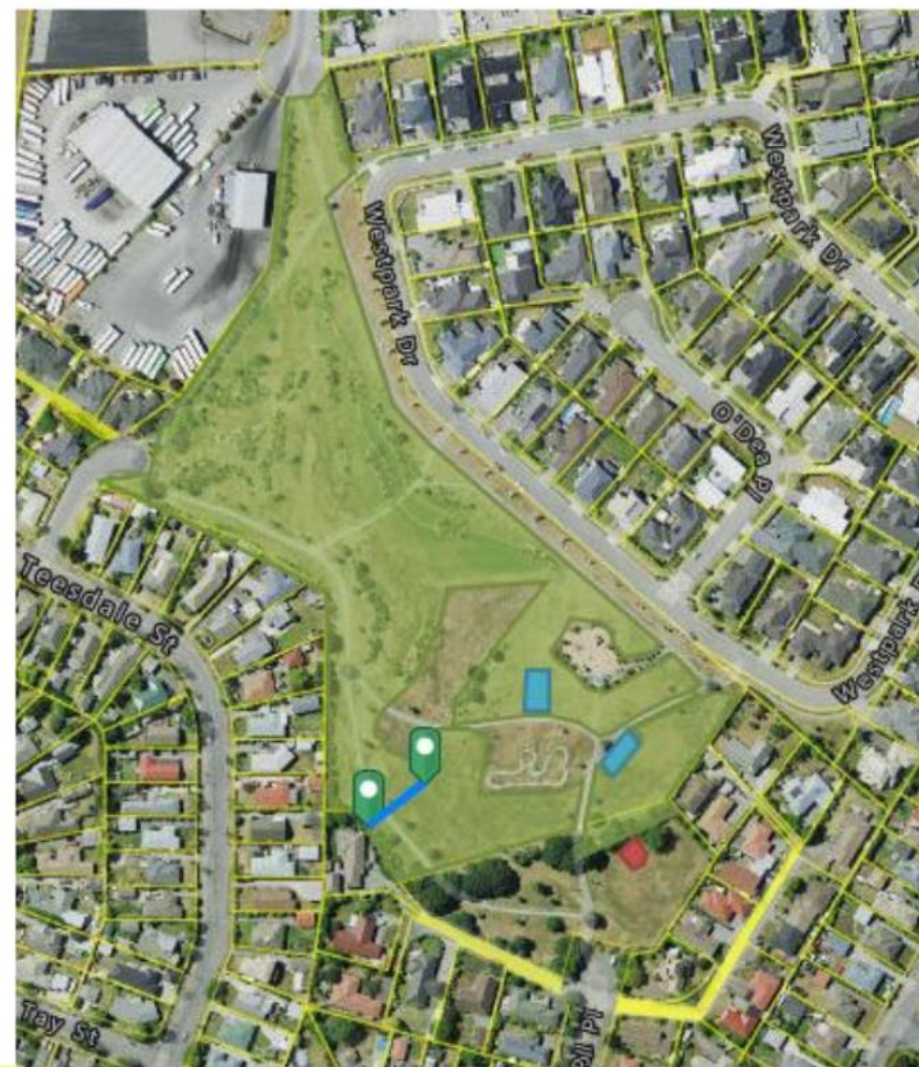
Current uses of the Nepal Reserve

- Primary function: Public amenity/infrastructure to serve as a water retention basin, 50% of the reserve identified for this function.
- Children's 0-5 play ground
- Children's 5-8+ Play ground
- Children's Pump Bike Track.
- Walking for adults and families and pets
- Adult sports
 - (Flyfishing, kicking a ball and other family activities)



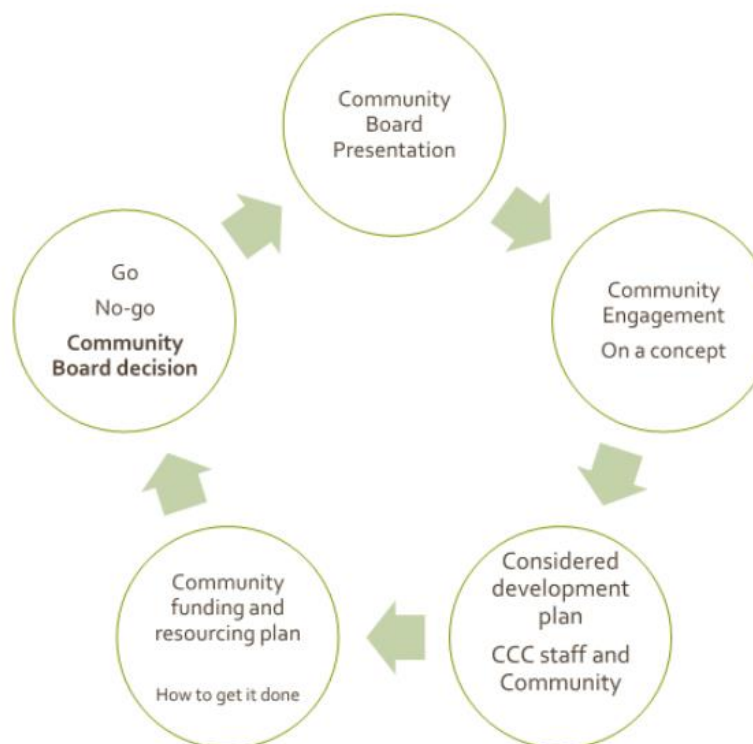
The Future Concept

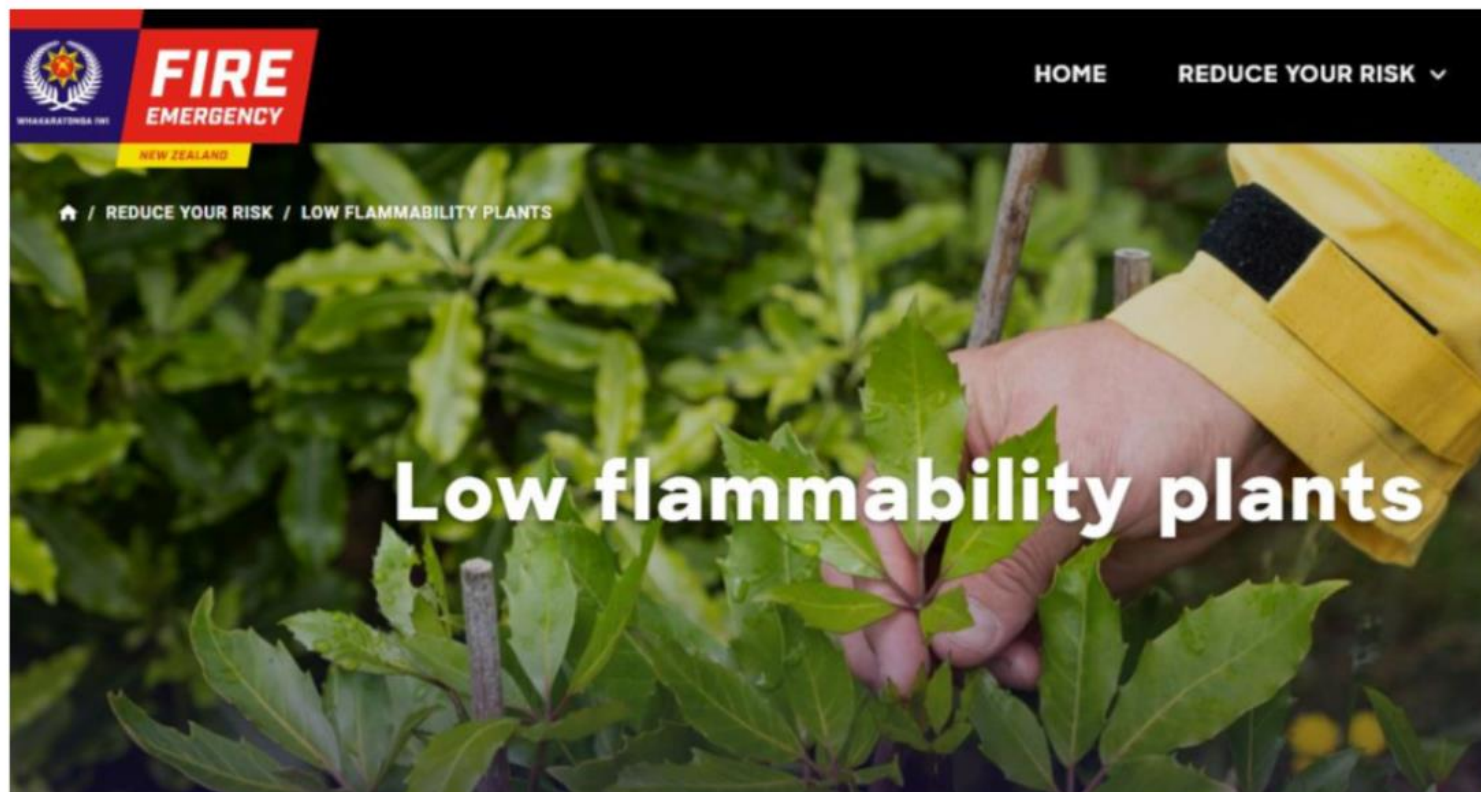
- Primary function: Public amenity/infrastructure to serve as a water retention basin retained and enhanced
- Children's 0-5 play ground beautified
- Children's 5-8 Play ground
 - Retained or Repurposed to hard court area, Half Court Basketball and Tennis rebound wall (11+ age group) Blue
 - Due for replacement in the Park management plan (Red)
- Children's Bike Pump track.
 - Lower maintenance costs ground cover vs grass.
 - Fire Smart Plant selection around human activity areas
- Walking for adults and families and pets
 - **Enhanced Native Forest plantings to over 70+% of the grassed area.**
 - Enhanced paths within the planted areas being gravel.
- Adult Activities
 - (Fly-fishing, kicking a ball and other family activities)
 - Creation of a picnic, grassed seated terraced area.
 - Improved lighting for walkers at night. (Solar Lighting)
- Marker is 40m for scale. Playground setback. Open fields.
 - Is this relevant where plantings are used to manage sound, could this be reduced?



Community engagement to get it done.

- Concept to a plan
 - The community ideas to confirm what is in the design
 - Considers Fire and Emergency Advice on Planting along side CCC Planting team
- CCC structure, processes and design finalized.
 - Costings identified.
- How to fund and resource it
 - Community / Government funding
 - Business and enterprise funding
 - Donations and sponsorships local industry, lottery grants.
 - Community planting days. Education.
- Go or No-go decision by the Community Board
 - Partial implementation
 - Full implementation
 - No implementation at all. Status quo.





The results

1. Increased public use wider age groups.
2. Increase in diversity of flora and fauna
3. **Community ownership and education project**
4. Reduction in CO₂ emissions
5. Reduction in maintenance costs
6. Reduction in Fires and adverse events within the park



NEPAL RESERVE

Community focused development project:
Native forest walking park and activities.



Questions

With thanks to: Grant Campbell FENZ Advisor Risk Reduction, Wolfgang Bopp CCC Botanic Gardens, Karen Boag CCC Community Development Advisor
and Annaliese Caukwell-Mills CCC Community Partnerships Ranger