

Waitai
Coastal-Burwood-Linwood Community Board
MINUTES ATTACHMENTS

Date: Monday 12 June 2023
Time: 4.30 pm
Venue: Boardroom, Corner Beresford and Union Streets,
New Brighton

TABLE OF CONTENTS	PAGE
4.1. Public Forum - Glenn Livingstone	
A. Glenn Livingstone Public Forum Presentation	3
4.3. Public Forum - Stephen Wood	
A. Stephen Wood Public Forum Presentation.....	12
4.4. Public Forum - Lynn Hayes	
A. Lynn Hayes Public Forum Presentation	16

New Brighton!

1. The Small Picture – the *'Legacy of events'*
2. The Larger Picture – *Leveraging off an event*
3. The Big Picture - *A role for the Community Board*



1. The Small Picture - *The 'legacy of events'*



**The Start Line of the Kathmandu Coast to Coast is
off Serpentine Road – on the bend of the Kumara Junction Highway, West Coast**



The pre-race briefing is in Greymouth

- This provides an economic stimulus
- The town reciprocates and welcomes competitors, support crew and friends with vouchers and discounts in race-packs – mostly beer!



- From 1983 until 2014, the Coast to Coast finish line was in Sumner
- From 2015, the finish line has been in New Brighton. This is Huge for New Brighton!



- In 2015, I worked with Blair Hughes and Coast to Coast Race Director Richard Ussher to get a double-sided promotional brochure into the race-packs
- The West Coast does this – see below (more beer!)



- New Brighton could do this too – we have so much to offer!

3. The Big Picture – *a role for the Community Board*

- The Community Board could host Business Association fora, as it hosts Residents Association fora



- These could serve to coordinate, encourage and provide a motivating environment for our businesses, hosted by elected members and staff, showing the Board's interest and providing e.g. up to date demographic data from Staff

Suggestions for the Community Board

1. IN THE SMALL PICTURE

Request staff to have a 'Coast to Coast Finish' sign placed adjacent to the Finish line



2. IN THE LARGER PICTURE

Coordinate the businesses and community to maximise the gains each February from the event (and other events – New Brighton has the most in the city according to Council staff)

3. IN THE BIG PICTURE

Host Business Association fora

Since 2015, New Brighton has continued to evolve and the possibilities are endless!

10% Discount for the Hot Salt Water Pools
with this Voucher!
Run across the Finish Line and hop in the
Pools to recover!



Bring the children to our great Mini
Playground while they wait for
Mum or Dad to finish!



Discount Voucher for a meal at Salt on the Pier
after your competitor finishes!



2nd coffee free at Switch, Crema, Urban
Corner, Honey (all participating cafes)

Thoughts on cycle networks from how the “Wednesday Wheelies” get around the East

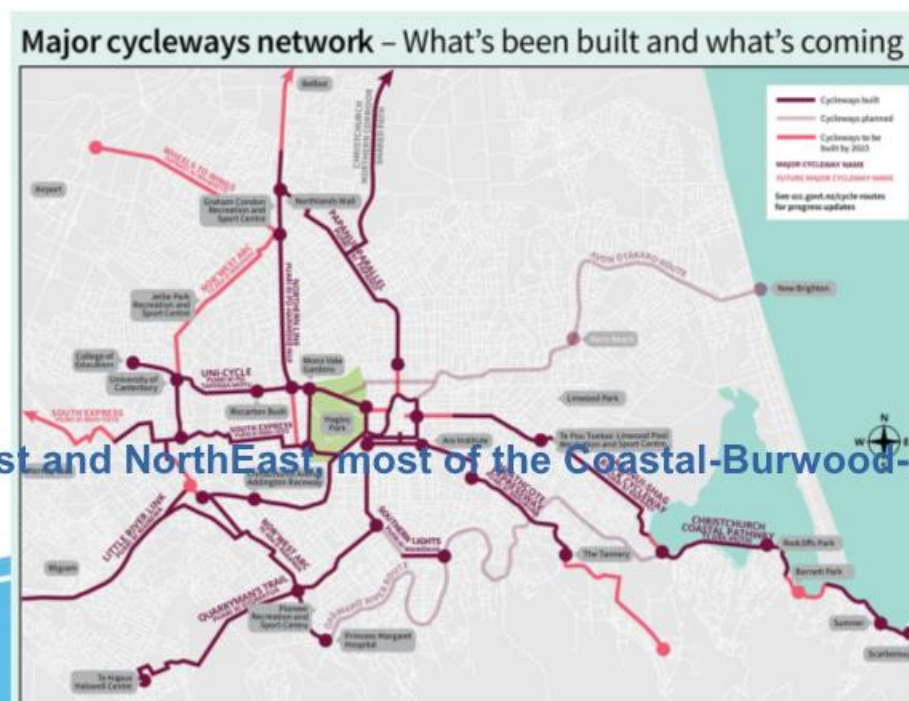
Presentation to the Waitai Coastal-Buwood-Linwood Community Board
Stephen Wood, June 2023

A bold plan: 2013

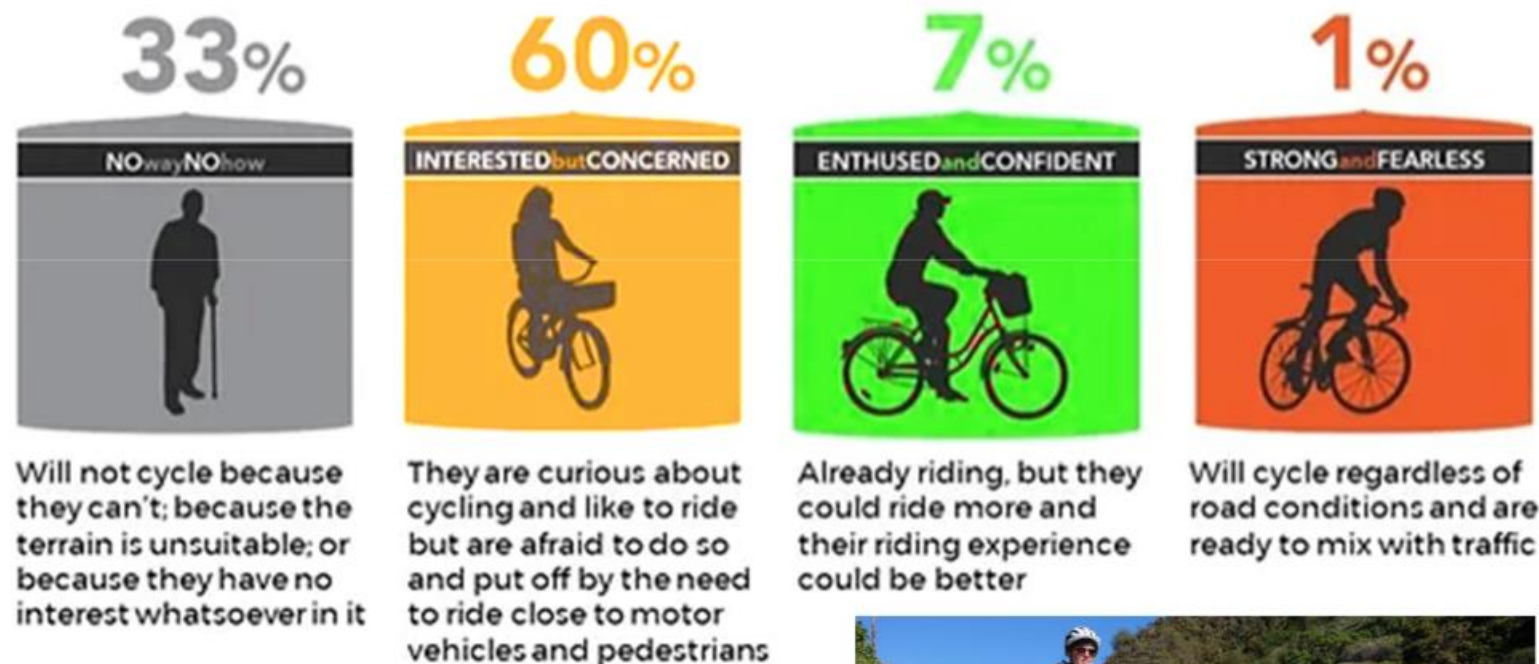


Figure 6.4. Future cycle network: major, local and recreational cycleways (Christchurch Transport Strategic Plan).

Ten years on....large gap to the East and NorthEast, most of the Coastal-Burwood-Linwood



Attitude to cycling (types of cyclists)



These have different approaches to u
(& different attitudes to building it!)

NZTA Waka Kotahi, from Geller (2009)



'S&F' vs 'IbC' (photo: Simon Kennett)

Wednesday Wheelies

- .Supported by St Albans Residents Association & Spokes Canterbury
- .Has been running for just over 5 years, increasingly popular
- .Wednesday mornings – demographics, retirees
- .Catering to “Interested but Concerned” riders, city discovery
- .Typical weekly turnout - 40 ± 10 riders
- .Group sizes – safer with 10-12 maximum - need group leaders



1st ride November 2017



March 2023

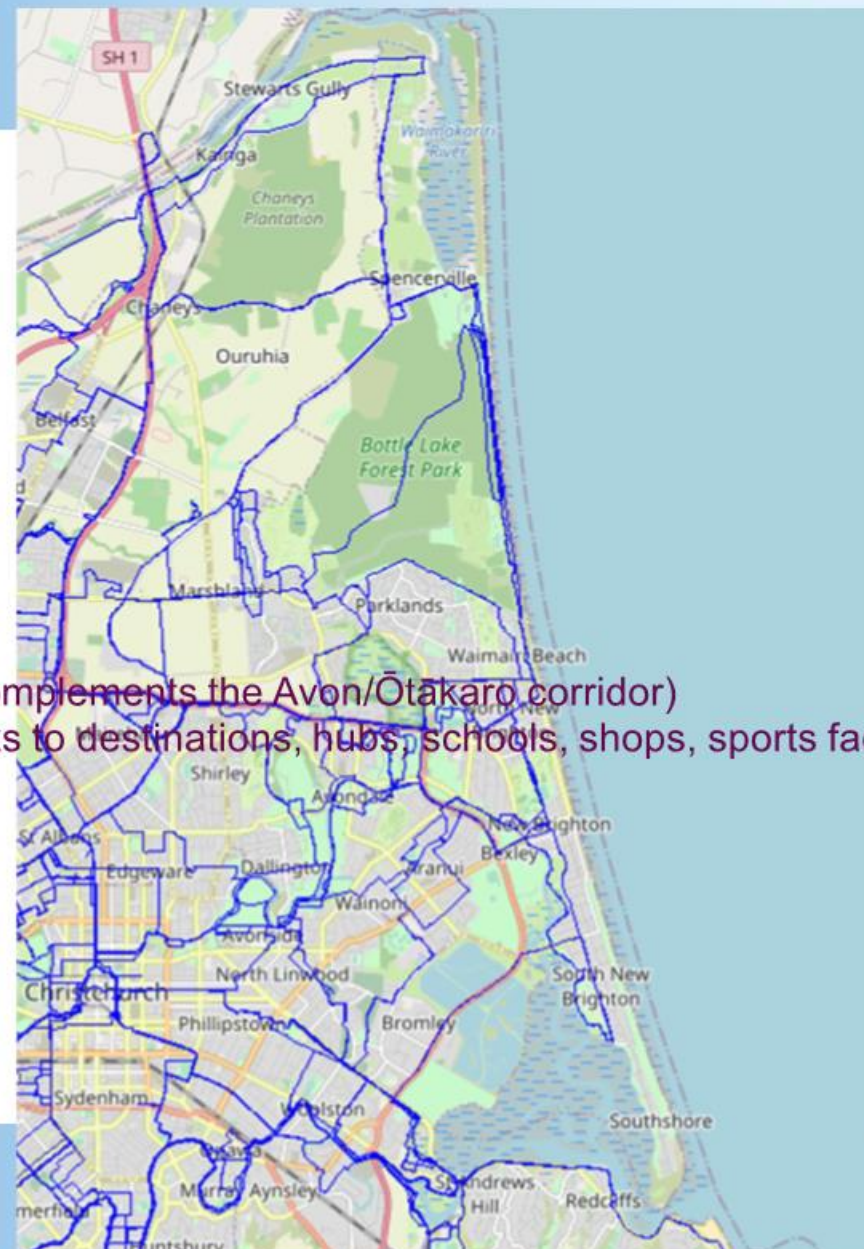


“WW” routes

- .Using MCRs to Southeast
- .Using MCR to North (CNC)
- .Using Avon/Ōtākaro river corridor
- .East/Northeast, using QEII/Travis/Anzac*
- .Escaping “city” - Brooklands, Bottle Lake
- .Using some roads that need single file
- .Back road short cuts include red-zone links
- .Avoiding arterials like Marshland, Pages Rd
- .are we connecting to local hubs/places?
- .are we typical riders?

Recommendations

- .Make the East MCR as direct as possible (complements the Avon/Ōtākaro corridor)
- .Then look at secondary connections, i.e. links to destinations, hubs, schools, shops, sports facilities
- .Secure bike parking at destinations
- .Safer speeds in neighbourhoods
- .“Quicker” or interim infrastructure
- .Less emphasis on shared paths
- .Events to promote cycling...



Deputation to Coastal – Burwood – Linwood Community Board

Lynn Hayes

12th June 2023

Good afternoon

I wish to speak to the Board regarding various monuments in the Board area that are lacking maintenance or have fallen into substantial disrepair

- The Anzac Poppies
 - Specifically the Garden in front of Poppies
 - It supposedly contains rocks from Gallipoli surrounded by a brick edge.
 - Overgrown
 - Can't see the brick edge
 - Duck poo every where especially under the poppies
 - Needs to have "Ornamental status" which would elevate it into a regular maintenance schedule
- Amelia Rogers Reserve
 - Commemorates the site of the first Post Office in the area that was run by the Postmistress Amelia Rogers for many years
 - Adjacent jetty that has fallen into disrepair and usage since the earthquakes
 - The Memorial Rock is overgrown with all sorts of vegetation although I suspect the original rose is still there
 - Plaque is missing.
 - Similarly "ornamental status" is required
- Jack Hinton Memorial
 - The surrounding gardens and planter boxes (at least 6) are all overgrown and lack maintenance.
 - Again, ornamental status would ensure regular maintenance
 - Pavers have growth starting between them
 - Possibly something missing on the rock
 - Access to the memorial is poor
 - Perhaps a left in left out carpark could be investigated off the motorway.

- QEII Park memorials

Two memorial stones

(1) Commonwealth Games. Generally in good condition

(2) Commemorating the purchase of the land and naming it QEII Park

The plaque on the second rock is missing

The area was deliberately not included in land sold to the ministry of Education so that the memorials and a significant stand of trees would remain to acknowledge the old QEII complex, the Commonwealth Games and the New Brighton Horse Racing Track

I note that there is to be a 50th recognition of the 1974 Games coming up in January 2024 and would like the missing plaque restored for the celebration

- Ernest Leaver Drinking Fountain at North Beach.

- Commemorates Ernest Leaver, an early Mayor of New Brighton after whom Leaver Tce nearby is named after

This has been leaking for many years

A partial repair was effected a couple of years ago

The repairer noted that the drinking fountain would need to be lifted, repairs made to the leaks underneath and then lowered back in place.

Final comment

If the board or CCC are to erect monuments, there needs to be a corresponding budget to tend to gardens and any repairs or maintenance that is required

Thank you

Lynn Hayes





