

Banks Peninsula Water Management Zone Committee
MINUTES ATTACHMENTS

Date: Tuesday 20 June 2023
Time: 4 pm
Venue: Lyttelton Community Boardroom
25 Canterbury Street, Lyttelton

TABLE OF CONTENTS	PAGE
9. Monitoring of Water Quality for Contact Recreation around Whakaraupō and Banks Peninsula	
A. Bank Peninsula Faecal Source Tracking Results June 2023.....	3

Banks Peninsula FST results June 2023

Corsair Bay, Canterbury

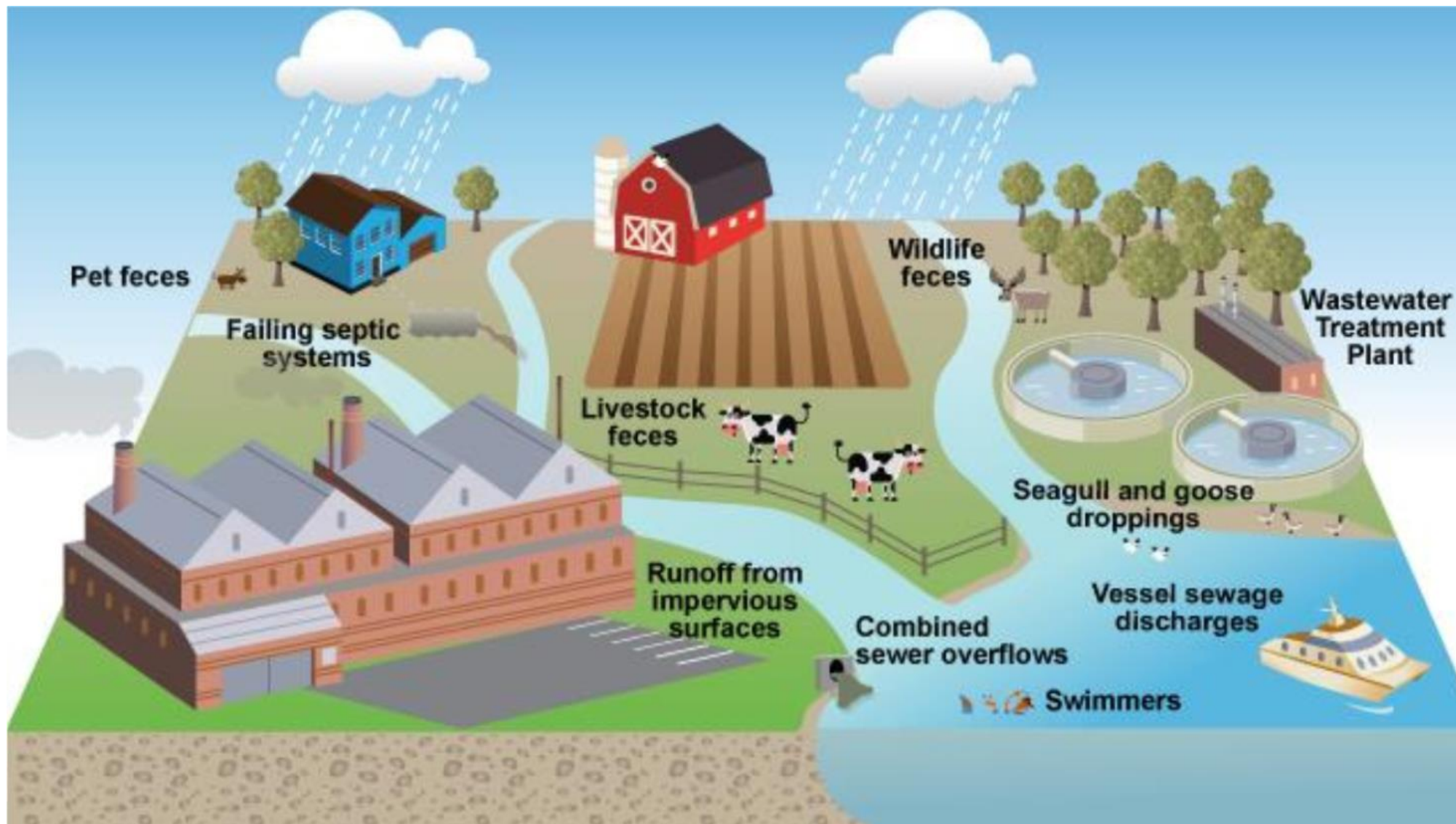
Who is responsible?



Faecal Source Tracking

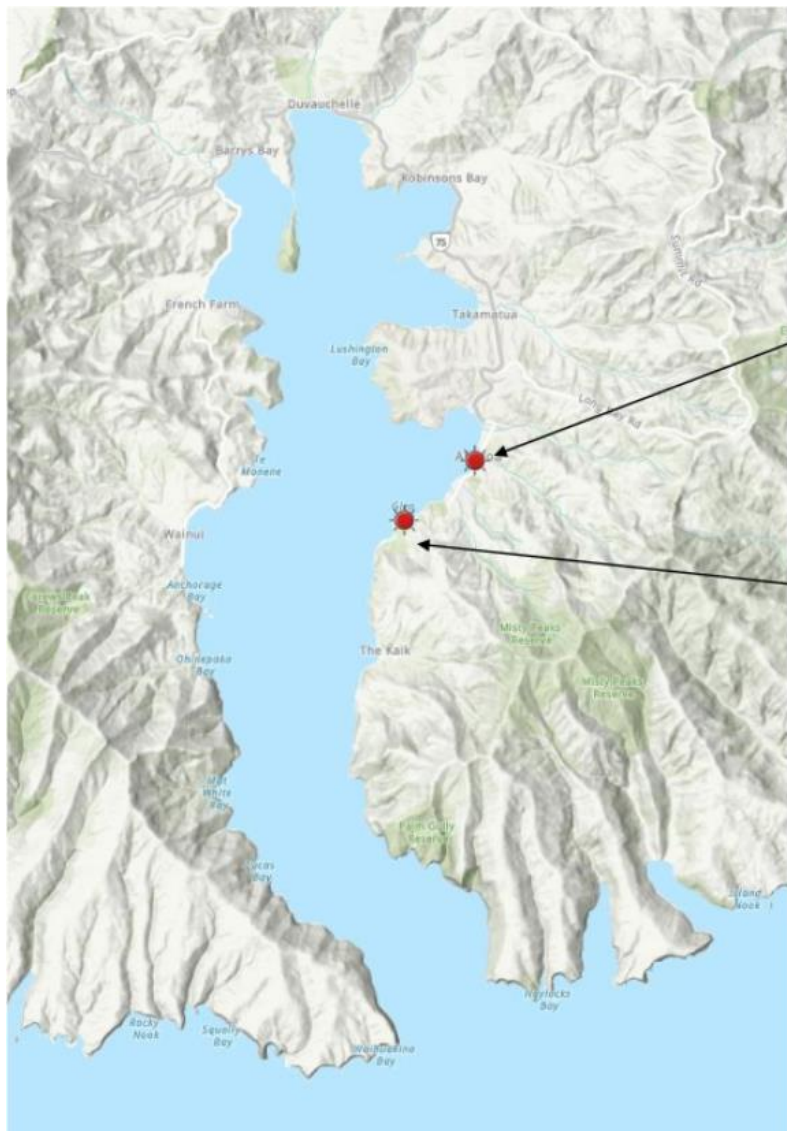
© ESR 2004







Akaroa and
Whakaraupō
harbours – sites
where FST samples
collected and
analysed 2023



Akaroa beach

Human, ruminant
and avian faecal
sources

Glen Bay

Human and avian
faecal sources

Akaroa and Glen Bay

1 sample at each beach –
wet weather 15th Feb 23



Diamond Harbour

Beach - Human, ruminant and dog

Stream – Human and avian

Purau

Beach – Ruminant and avian

Stream - Ruminant and avian

Diamond Harbour and Purau Bay

1 sample at each site –
wet weather 15th Feb 23



Rāpaki

Stormwater outfall –
Human and avian

Stream – Avian

Governors Bay (Sandy Bay)

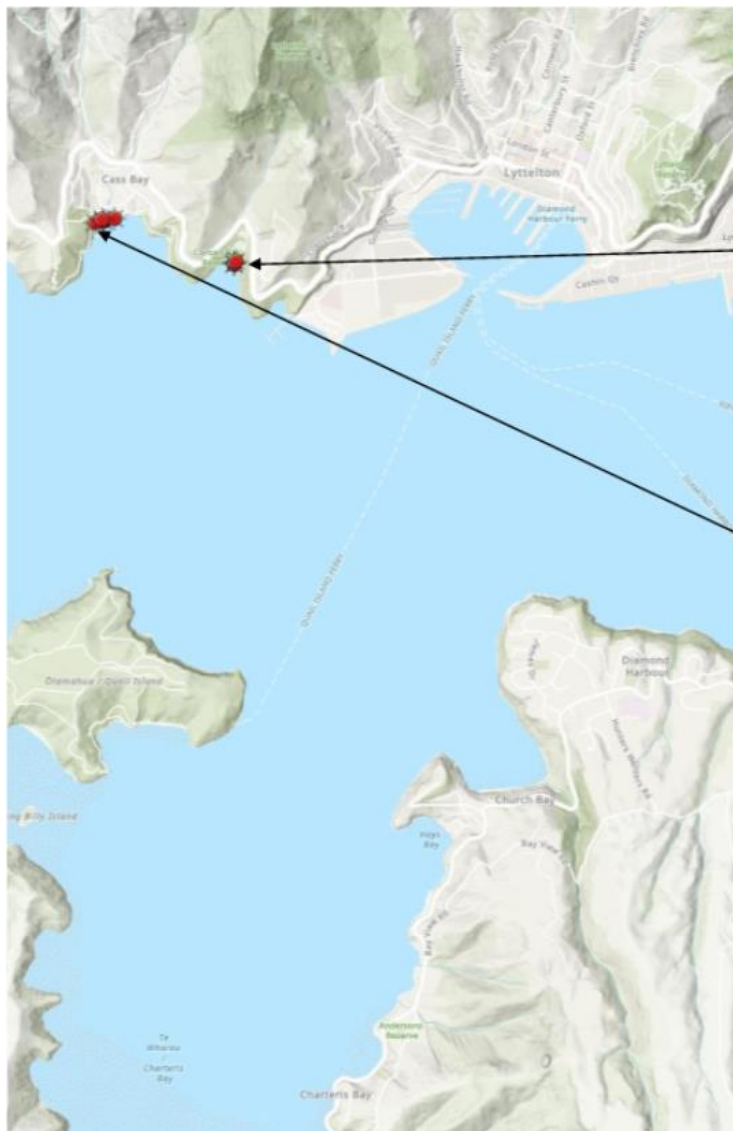
Beach and stream –
Ruminant and dog

Zephyrs Stream –
Human, ruminant
and dog

Rāpaki streams

Governors Bay
and streams

Wet weather 15th Feb 23



Corsair Bay

Beach and stream –
Human, ruminant,
dog and avian

Cass Bay

Beach and stream –
Human, one sample
included human and
dog

Cass and Corsair bays

Wet weather 15th and
23rd Feb 23

Summary....

- Faecal contamination from human and other sources (bird, dogs and livestock) in a number of the bays after rainfall events.
- Human faecal sources could include leaking septic tanks on private property, damaged public and private pipes, wastewater overflows, private cross connections, boats dumping wastewater and freedom camping.
- CCC leading an investigation into potential sources and mechanisms of human faecal contamination
- Key messages for what everyone can do to help....
 - Reporting any spillages, leaks or pollution you see near waterways or drains.
 - Picking up dog poo - never leave it on walk tracks, pavements or the beach where it can wash into drains and waterways.
 - Always using the public toilets provided.
 - Ensuring your boat is compliant and disposing of sewage waste correctly.
 - Getting your septic tank checked to make sure it is operating correctly.