



Te Pātaka o Rākaihautū Banks Peninsula Community Board AGENDA

Notice of Meeting:

An ordinary meeting of Te Pātaka o Rākaihautū Banks Peninsula Community Board will be held on:

Date: Monday 8 May 2023
Time: 10 am
Venue: Lyttelton Community Boardroom,
25 Canterbury Street, Lyttelton

Membership

Chairperson	Reuben Davidson
Deputy Chairperson	Nigel Harrison
Members	Tyrone Fields
	Asif Hussain
	Lyn Leslie
	Cathy Lum-Webb
	Howard Needham
	Luana Swindells

3 May 2023

Penelope Goldstone
Manager Community Governance, Banks Peninsula
941 5689
penelope.goldstone@ccc.govt.nz
www.ccc.govt.nz

Note: The reports contained within this agenda are for consideration and should not be construed as Council policy unless and until adopted. If you require further information relating to any reports, please contact the person named on the report.

To watch the meeting live, or a recording after the meeting date, go to:

<https://www.youtube.com/channel/UC66K8mOIfQT3l4rOLwGbeug>

To view copies of Agendas and Minutes, go to:

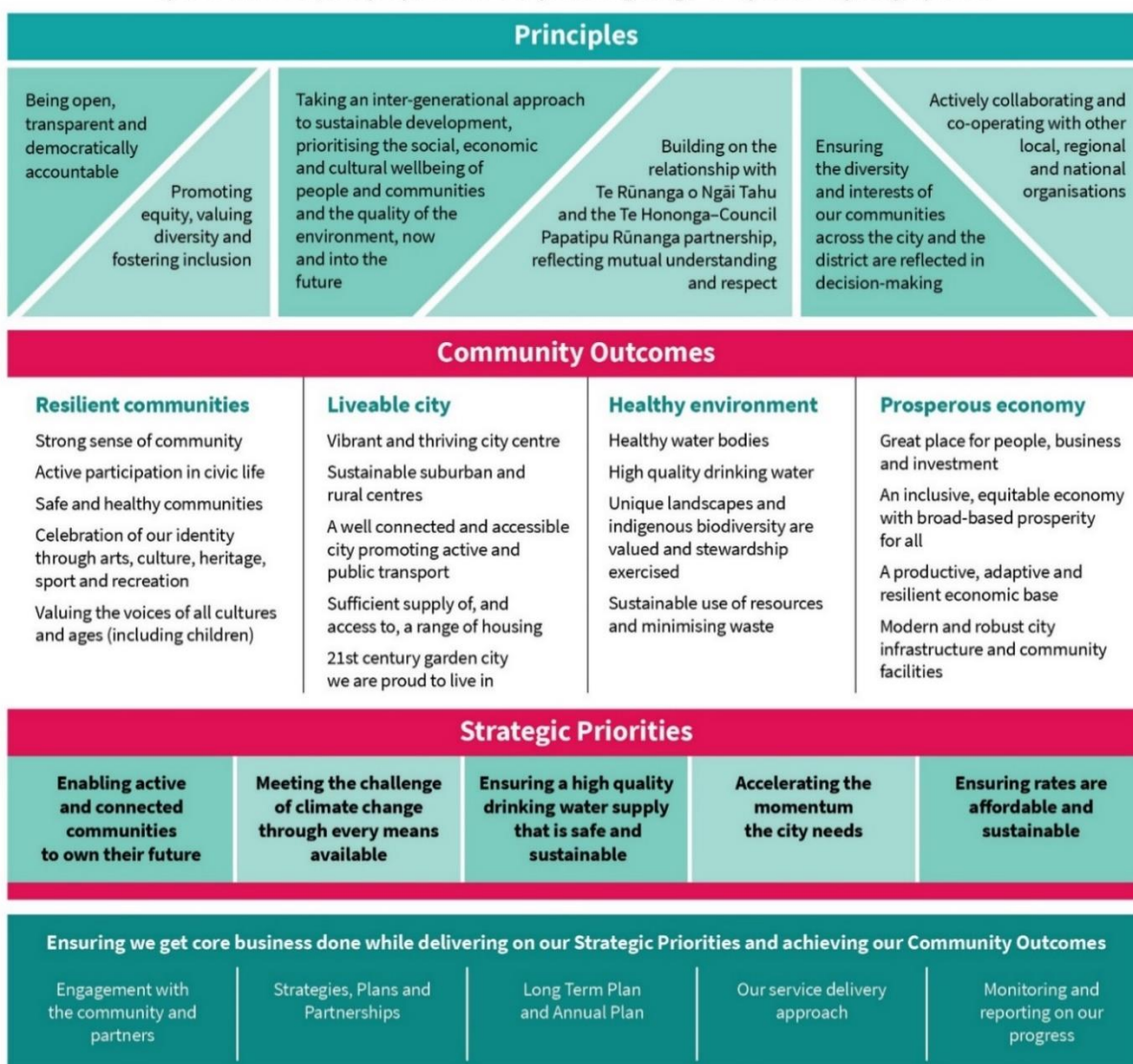
<https://www.ccc.govt.nz/the-council/meetings-agendas-and-minutes/>





Ōtautahi-Christchurch is a city of opportunity for all

Open to new ideas, new people and new ways of doing things – a city where anything is possible



Part A	Matters Requiring a Council Decision
Part B	Reports for Information
Part C	Decisions Under Delegation

TABLE OF CONTENTS

Karakia Tīmatanga	4
C 1. Apologies Ngā Whakapāha	4
B 2. Declarations of Interest Ngā Whakapuaki Aronga	4
C 3. Confirmation of Previous Minutes Te Whakaāe o te hui o mua	4
B 4. Public Forum Te Huinga Whānui	4
B 5. Deputations by Appointment Ngā Huinga Whakaritenga.....	4
B 6. Presentation of Petitions Ngā Pākikitanga	5
CB 7. Reserve Committee Meeting Minutes	13

STAFF REPORTS

C 8. Lyttelton Recreation Centre - Naming	27
C 9. Te Pātaka o Rākaihautū Banks Peninsula 2023-25 Community Board Plan	33
C 10. L'aube Hill Reservior - Tree Removal and Temporary Reservoir Location	57
C 11. Te Pataka o Rakaihautu Banks Peninsula 2022-23 Discretionary Response Fund: Living Streams Community Nursery - Irrigation System; The Loons Club - ANZAC Day Commemoration Celebration in Lyttelton; Akaroa District Promotions - Contingency Funding.....	63
C 12. Te Pātaka o Rākaihautū Banks Peninsula Community Board Area Report - May 2023	69
B 13. Elected Members' Information Exchange Te Whakawhiti Whakaaro o Te Kāhui Amorangi.....	113

Karakia Whakamutunga

Karakia Tīmatanga

Whakataka te hau ki te uru Whakataka te hau ki te tonga Kia mākinakina ki uta Kia mātaratara ki tai E hī ake ana te atakura He tio, he huka, he hauhūnga Tīhei Mauri Ora	Cease the winds from the west Cease the winds from the south Let the breeze blow over the land Let the breeze blow over the ocean Let the red-tipped dawn come with a sharpened air. A touch of frost, a promise of a glorious day.
--	---

1. Apologies Ngā Whakapāha

At the close of the agenda no apologies had been received.

2. Declarations of Interest Ngā Whakapuaki Aronga

Members are reminded of the need to be vigilant and to stand aside from decision making when a conflict arises between their role as an elected representative and any private or other external interest they might have.

3. Confirmation of Previous Minutes Te Whakaāe o te hui o mua

That the minutes of Te Pātaka o Rākaihautū Banks Peninsula Community Board meeting held on [Tuesday, 11 April 2023](#) be confirmed (refer page 6).

4. Public Forum Te Huinga Whānui

A period of up to 30 minutes will be available for people to speak for up to five minutes on any issue that is not the subject of a separate hearings process.

There were no public forum requests received at the time the agenda was prepared

5. Deputations by Appointment Ngā Huinga Whakaritenga

Deputations may be heard on a matter or matters covered by a report on this agenda and approved by the Chairperson.

5.1 Te Pātaka o Rākaihautū Banks Peninsula 2023-25 Community Board Plan

Mr. Harry Stronach, will speak on behalf of Akaroa Ratepayers and Residents Association Inc, regarding the Te Pātaka o Rākaihautū Banks Peninsula 2023-25 Community Board Plan report (Item 9 of the Agenda refers).

5.2 Te Pātaka o Rākaihautū Banks Peninsula 2023-25 Community Board Plan

Nicky Snoyink will speak on behalf of Forest & Bird regarding the Te Pātaka o Rākaihautū Banks Peninsula Draft Community Board Plan 2023-25 report (Item 9 of the Agenda refers).

5.3 Lyttelton Recreation Centre Naming

Maui Stewart, Te Hapū o Ngāti Wheke Rapaki, Nathan Mauger, Manager of the Lyttelton Recreation Centre and Wendy McKay, Lyttelton Recreation Centre Trust, will address the Board regarding the Lyttelton Recreation Centre Naming report (Item 8 of the Agenda refers).

6. Presentation of Petitions Ngā Pākikitanga

There were no petitions received at the time the agenda was prepared.

Te Pātaka o Rākaihautū Banks Peninsula Community Board OPEN MINUTES

Date: Tuesday 11 April 2023
Time: 10.04 am
Venue: Little River Boardroom, 4238 Christchurch Akaroa Road, Little River

Present

Chairperson	Reuben Davidson
Deputy Chairperson	Nigel Harrison
Members	Tyrone Fields (via audio/visual link). Asif Hussain Lyn Leslie Cathy Lum-Webb Howard Needham

Penelope Goldstone
Manager Community Governance, Banks Peninsula
941 5689
penelope.goldstone@ccc.govt.nz
www.ccc.govt.nz

To watch the meeting live, or a recording after the meeting date, go to:

<https://www.youtube.com/channel/UC66K8mOIfQT3I4rOLwGbeug>

To view copies of Agendas and Minutes, go to:

<https://www.ccc.govt.nz/the-council/meetings-agendas-and-minutes/>



- Part A** **Matters Requiring a Council Decision**
Part B **Reports for Information**
Part C **Decisions Under Delegation**
-

Karakia Tīmatanga:

The agenda was dealt with in the following order.

1. Apologies Ngā Whakapāha

Part C

Community Board Resolved BKCB/2023/00013

That an apology for absence received from Luana Swindells be accepted.

Lyn Leslie/Cathy Lum-Webb

Carried

2. Declarations of Interest Ngā Whakapuaki Aronga

Part B

There were no declarations of interest recorded.

3. Confirmation of Previous Minutes Te Whakaāe o te hui o mua

Part C

Community Board Resolved BKCB/2023/00014

That the minutes of Te Pātaka o Rākaihautū Banks Peninsula Community Board meeting held on Monday, 6 March 2023 be confirmed with the following amendments:

Item 4.1 to read:.... and its focus of **regenerative tourism** for Banks Peninsula.

Item 9, second bullet point to read: The issue of cyclists **leaving** their bicycles on the footpath and road outside cafes...

Nigel Harrison/Cathy Lum-Webb

Carried

4. Public Forum Te Huinga Whānui

Part B

There were no public forum presentations.

5. Deputations by Appointment Ngā Huinga Whakaritenga

Part B

There were no deputations by appointment.

6. Presentation of Petitions Ngā Pākikitanga

Part B

There was no presentation of petitions.

7. Reserve Committee Meeting Minutes

Community Board Resolved BKCB/2023/00015 (Original Officer's Recommendations accepted without change).

Part C

That Te Pātaka o Rākaihautū Banks Peninsula Community Board:

1. Receives the unconfirmed triennium minutes of the following Reserve Committees:
 - a. Lyttelton Reserves Committee – 15 March 2023.
2. Approves the following Lyttelton Reserves Committee Appointments:
 - a. Lyttelton Reserves Committee:
 - i. Kirsty Brennan
 - ii. Joshua Merriam
 - iii. Hamish Fairbairn
 - iv. Helen Shaw
 - v. Darryl Warnock.
3. Receives the unconfirmed minutes of the following Reserve Committee:
 - a. Pigeon Bay Reserve Committee – 27 February 2023.
 - b. Diamond Harbour Reserve Committee – 13 March 2023.

Asif Hussain/Cathy Lum-Webb

Carried

9. Banks Peninsula Discretionary Response Applications - Diamond Harbour Health Centre Upgrade - Consent costs; Little River Craft Station - Information Station

Officer Recommendations Ngā Tūtohu

That the Te Pātaka o Rākaihautū Banks Peninsula Community Board:

1. Approve a grant of \$3,492 from its 2022-23 Discretionary Response Fund to the Diamond Harbour & Districts Health Support Group towards building consent fees.
2. Approve a grant of \$2,000 from its 2022-23 Discretionary Response Fund to the Little River Craft Station Incorporated for the Information Station Part 2 towards wages.

Community Board Resolved BKCB/2023/00016

Part C

That the Te Pātaka o Rākaihautū Banks Peninsula Community Board:

1. Approves a grant of \$8,250 from its 2022-23 Discretionary Response Fund to the Diamond Harbour & Districts Health Support Group towards building consent fees.
2. Approves a grant of \$2,500 from its 2022-23 Discretionary Response Fund to the Little River Craft Station Incorporated for the Information Station Part 2 towards wages.

8. Protection and restoration of the freshwater spring in Reserve 1259 to enhance freshwater values in the Wairewa catchment.

Officer Recommendations Ngā Tūtohu

That Te Pātaka o Rākaihautū Banks Peninsula Community Board:

1. Approve the landscape development plan for Reserve 1259 as shown in Attachment A of this report.

Community Board Resolved BKCB/2023/00017

Part C

That Te Pātaka o Rākaihautū Banks Peninsula Community Board:

1. Approves the landscape development plan for Reserve 1259 as shown in Attachment A of the agenda report.
2. Requests staff advice on naming options for Reserve 1259.

Lyn Leslie/Asif Hussain

Carried

10. Te Pātaka o Rākaihautū Banks Peninsula Community Board Area Report - April 2023

Community Board Resolved BKCB/2023/00018 (Original Officer's Recommendation accepted without change).

Part B

That Te Pātaka o Rākaihautū Banks Peninsula Community Board:

1. Receives the Te Pātaka o Rākaihautū Banks Peninsula Community Board Area Report for April 2023.

Asif Hussain/Lyn Leslie

Carried

11. Elected Members' Information Exchange Te Whakawhiti Whakaaro o Te Kāhui Amorangi

Part B

Members exchanged information on the following topics:

- The Board were advised about the plans for the Lyttelton ANZAC Day service.
- Orion NZ Limited recently presented to the community on Community Power.
- The community noise monitoring results will be available soon.

- The community is considering having a plaque marking the five year anniversary of 15 March terror attack erected at Pony Point next year.
- Discussion was held on the mental health services available in Banks Peninsula for business owners.
- Board members were reminded that capital works projects are not eligible for Strengthening Communities Funding.
- The Board were advised that the Council approved the additional funding for Okains Bay New Water Supply Scheme and an extension of time to complete the project from June 2023 to December 2024.
- The Board were informed about the recent meeting of the Banks Peninsula Water Zone Committee.
- A draft Annual Plan submission has been made by the Takapūneke Co-governance Group seeking work on the walkway between Takapūneke Reserve and Britomart Memorial Reserve.
- The Wairewa Little River Flooding group has met recently.
- The last cruise ship of the season was in Lyttelton Port over the Easter break.
- It was noted that Kaitorete Spit has been declared hedgehog free.

11.1 Beach Maintenance

The Board discussed the need for debris to be removed from the beaches around Akaroa, as the debris is washed up on the Akaroa township during storm surges.

Part B

That the Te Pātaka o Rākaihautū Banks Peninsula Community Board:

1. Requests staff advice on the maintenance schedule to clear the Akaroa beaches of debris and what actions are carried out prior to a storm to alleviate the impact of debris being washed up on the streets and facilities in Akaroa.

11.2 State Highway Roadworks

The Board discussed the issue of work sites on the State Highway and the absence of road workers at the sites.

Part B

That the Te Pātaka o Rākaihautū Banks Peninsula Community Board:

1. Agrees to write to Waka Kotahi New Zealand Transport Agency raising its concerns about road work sites being set up with no contractors working on site.

11.3 Wairewa Little River Public Toilets

The Board discussed the continual issues with the highly used Wairewa Little River Public Toilets.

The Board discussed whether an application could be made to the Tourism Infrastructure Fund provided through the Ministry of Business, Innovation and Employment.

Part B

That the Te Pātaka o Rākaihautū Banks Peninsula Community Board:

1. Requests staff advice on the progress with addressing the issues and/or upgrading the Wairewa Little River public toilets.
2. Requests staff advice on the Council applying to the Ministry of Business, Innovation & Employment Tourism Infrastructure Fund to upgrade the Wairewa Little River toilets, Takapūneke, and Britomart Memorial Reserve, Akaroa.

11.4 Water Supply for Firefighting

The Board were advised that some Birdlings Flat residents have made a submission to the Council's Draft Annual Plan seeking that the funding for communal water tanks for firefighting in Birdlings Flat be reinstated and brought forward.

Part B

That the Te Pātaka o Rākaihautū Banks Peninsula Community Board:

1. Requests staff advice on progress of the communal fire storage for communities in Banks Peninsula project.

11.5 Lyttelton Recreation Ground Parking

The Board were advised that the parking for the Lyttelton Recreation Grounds has been reduced with the installation of bollards

Part B

That the Te Pātaka o Rākaihautū Banks Peninsula Community Board:

1. Seeks staff advice on the seasonal removal of the bollards at Lyttelton Recreation Grounds to allow additional parking during the rugby season.

Karakia Whakamutunga:

Meeting concluded at 11.40am.

CONFIRMED THIS 8th DAY OF MAY 2023

REUBEN DAVIDSON

Unconfirmed

7. Reserve Committee Meeting Minutes

Reference / Te Tohutoro: 23/565384

Report of / Te Pou

Matua:

Liz Beaven, Community Board Adviser, Liz.Beaven@ccc.govt.nz

General Manager /

Pouwhakarae:

Mary Richardson, General Manager Citizens & Community
(Mary.Richardson@ccc.govt.nz)

1. Purpose of Report Te Pūtake Pūrongo

1.1 Unconfirmed meeting minutes have been received from the following Reserve Committees:

Name	Subject
Cass Bay Reserve Committee	23 March 2023
Little Akaloa Reserve Committee	8 April 2023
Pigeon Bay Reserve Committee	12 April 2023
Okains Bay Reserve Committee	19 April 2023

2. Officer Recommendations Ngā Tūtohu

That Te Pātaka o Rākaihautū Banks Peninsula Community Board:

1. Receive the unconfirmed minutes of the following Reserve Committees:
 - a. Cass Bay Reserve Committee – 23 March 2023.
 - b. Little Akaloa Reserve Committee – 8 April 2023.
 - c. Pigeon Bay Reserve Committee – 12 April 2023.
 - d. Okains Bay Reserve Committee – 19 April 2023.

Attachments Ngā Tāpirihanga

No.	Title	Reference	Page
A 	Cass Bay Reserve Committee - Unconfirmed 23 March 2023 Minutes	23/613023	14
B 	Little Akaloa Reserve Committee - Unconfirmed 8 April 2023 Minutes	23/565431	18
C 	Pigeon Bay Reserve Committee - Unconfirmed 12 April 2023 Minutes	23/613042	21
D 	Okains Bay Reserve Committee - Unconfirmed 19 April 2023 Minutes	23/660436	24

Cass Bay Reserve Committee meeting - minutes

Next meeting dates: 3rd of May, 28th of June, 6th of September, 1st of November

Voting for committee officers:

Chair Person:

- Jenny Healey nominated by Jeremy Webb and Chris Nee
- Unanimously voted as chairperson

Deputy chair:

- Chris Nee
- Unanimously voted as deputy chairperson

Secretary: Committee members will take turns making minutes

Conflicts of interests to be raised: none

Update by Jenny Healey

Pest plant control:

- Poplars in the five groves were poisoned with 120% success rate taken into account the many saplings that died off by secondary poisoning

Pest animal control:

- WOPP/ Whaka Ora Pest Project lead by Katie Dunlop CVNZ:
 - Pest trapping will be set up
 - At the moment a monitoring round is conducted in Steadfast, Pony Point and the coastal track to determine which species are around.
- Funding from Whaka Ora to start to make Steadfast become a Pest Free Reserve by improving the existing fences requested.

Plant health:

- 15 volunteers have been watering the plants over the summer. The plants are doing very well.
- Irrigation has been extended all the way to the top planting site in Steadfast.

Stream health/ water quality:

- Students from UC have done a baseline study on the health of the stream. Results show the water quality is ok but there were few invertebrates found in the stream.
- CCC did a study and found 9 larger banded Kōkopu as well as some smaller, juveniles.
- Recently an adult banded Kōkopu and a few little ones were spotted in a puddle in the stream by KFN
- A person within the KFN team will be conducting water testing in Steadfast in the coming months via test kit from Ecan

Other

- Kaimahi for nature crew has been twice over the summer and helped with releasing and treating the Poplars in the stream that were sprouting again. The crew will come and help out at the reserve once a month for the rest of the year and will help out with plant site preparation and pest plant control
- Frontiers Abroad have 50 US students that will be doing research on:
 - Carbon credit process for regenerative planting
 - Mātauranga Māori
 - Effects of climate change on Whakaraupo etc.
- Several of the students came to help with releasing work during a CVNZ day which was well attended by locals and other volunteers.

Subcommittees

Jenny raised the idea to work in sub committees over the coming year:

- Track building and maintenance- Dave, Jeremy, Taka
- Planting days
- Memorial planting- Noraini, Jenny
- Weed control- Warner

Planting Steadfast

Next and coming years

The question was raised how many more plants will/can be planted the coming years. This is dependent on funding and unknown at this point, noting that the Ecan funding ran out last year.

This year

About 1500 plants available for this year.

Possible planting areas for this year:

- Infill planting: Focus on planting right next to stream where this has not been done, to provide cover/shade in the stream
 - Land slips: The 2 land slips can be planted to stabilize the soil.
 - Poplar groves. Jenny suggests to do an experiment:
 - Leave one area for natural regeneration
 - Poroporo Seed bomb one grove
 - Plant in the third area
 - Check on what is naturally regenerating to guide planting for other groves in future years.
- Dave Taylor planted fire retardant species on the boundary. Should we do this on the other boundary?

Community planting day:

- Proposal 22nd of July. Jenny will check with Hamish to make sure there are no other CVNZ planting days planned that day
- Focus areas:
 - Poplar grove closest to current planting
 - Slip closest
 - Infill planting next to stream

Tracks Steadfast

- Gates are now open from 7.30am to 9pm
- Geotech and environment review underway to make a connecting track to the Summit Road. Track should be in place before end of December!
- Mountain bike tracks:
 - They are in the development plan but no funding at the moment
 - Proposal to make mountain bike tracks with youth from the community. The idea was raised after a call for community projects engaging youth in the outdoors.
 - In stead of waiting for another funding call, the proposal is to work out the process to get MTB tracks started. Jeremy to enquire. Nic Singleton, Recreational Ranger will know more.

Eucalyptus forest:

- Proposal from Nick Singleton, park ranger, to make a zigzag track through Eucalyptus forest as an alternative track for the Pony Point track. Existing Point track won't be restored due to geotech findings.
- One of the Eucalyptus trees is found to be dangerous and will be cut – awaiting further news
- Totara seedlings were planted in the area and are being watered by Liz
- It would be good to take out the weed species to contain and make space for planting natural regen. More specifically a lot of Boneseed, Wattle and Eucalyptus saplings:
 - KFN to help out with this
 - Council might be an option too
 - The area might be in the OMB Boneseed containment zone of Ecan. Jenny will send email to Karen. Karen to find out if Ecan can play a role in the removal.

Pony point

- Pou will be replaced!
- Planted areas need borders so that they won't be weed eaten in the future. Jenny will meet up with the people that do the maintenance to make a plan.
- Most of the plants don't need the plant guards anymore. Will we mark the plants instead? Noraine suggests not to mark them to symbolize the 51 are one of us.
- It is important to start planning for 15 March 2024:

- The idea is to have an official ceremony where officials will come and recognize the place as a memorial area. The committee voted unanimously to organise and support an official ceremony
- Aside from the official ceremony, there will also be a community event. Ideas were raised to play communal games.

Community building

Good news! There is approval to build a new community facility where currently the garage and shed are located. Both will be moved.

Minutes of the Little Akaloa Reserve Management Committee
2pm Easter Saturday, 8 April 2023
Little Akaloa Hall

The meeting commenced at 2.05pm.

Craig Waghorn (Chair) welcomed everyone to the meeting.

1. Attendees

Those Committee members present: Craig Waghorn, Jo Allison, Amanda Strong, Mike Williams, Mark Leonard, Jeff May, Wayne Hamilton and Wayne Morris (a quorum).

Apologies from Committee members: Paul Gilbert, Rowan Waghorn, Mike Newland and Richard Earl.

Community members present: Teresa Whittaker, John Moore, Sarah Flynn, Richard Till, Owen Dewe, Mary and Gordon Hill, Ruth Williams, Juliet and Steve Manning, Scott Lawes, Jeremy Cox, Roger Sutton, Kevin van Hoof, Dianne and John Dalley, Ken and Johanne MacMaster, Joe Williams, Rob and Libby McCormick, Corinne Bailey, Steven and Janet Shrigley, Angela and Nelson Craw, Robbie Turnbull, Valda Burke and Keith Johnston.

Apologies from community members: Briana and Joan Earl, Vanessa van Hoof, Adrian Campbell and Tania Morris.

2. Decision Matters

Craig Waghorn introduced the sole matter to be discussed and determined at the meeting, being the continuance or non-continuance of the campground at the domain. Craig Waghorn noted that the Committee members present would reconvene immediately following the community discussion to determine the matter. A summary of the non-compliances regarding the campground was provided to attendees at the outset of the meeting, and the Schedule of Standards for Camping Grounds from the Camping-Grounds Regulations 1985 was available for attendees to review (copies of which accompany these minutes).

An open discussion followed, during which a number of views were shared by community members, both in favour of and against the campground being discontinued and during which a number of questions were asked and answered.

During the discussion, Craig Waghorn noted that the Committee has been engaging with the Council for around two years regarding new terms of reference which the Committee is required to comply with and the compliance issues with the campground, including looking at several different angles that may allow the campground to continue. Craig also noted that the new terms of reference prohibit

the Committee dealing with funds (as it currently does for fees collected from campers at the domain) and the net fees collected from campers is ~\$7k to \$8k pa. Craig also noted that the time and expense involved in making the campground compliant with regulations would be ~\$150k to \$180k for an upgraded sewerage system, plus costs associated with providing hot water, kitchen and laundry facilities, showering facilities and obtaining a necessary resource consent, certification from the Council and attempting to change the status of the land from a reserve (given that camping is not permitted on reserve land).

The community raised what they would expect as flow on effects of a discontinuance of the campground, including freedom campers. Craig Waghorn noted in response that it is the Council's role to police freedom campers and that there is a Council portal for noting issues such as freedom camping. In addition, Craig noted that the Council would install signage regarding the campground closure and have websites that refer to the campground amended to note its closure. One community member noted that there have been freedom campers at Chorlton and requested that signage be installed there. **Action:** Committee to share portal with the community.

A question was raised by a member of the community as to whether the Council would continue to service and maintain the toilets at the Domain once the campground has closed. Craig Waghorn confirmed that the Council would continue to do so. Questions were also raised around regulations for events held at the Domain. It was noted in response that the Council publishes requirements for events held at Domains on their website.

One community member also raised the possibility of petitioning the Council with a view to upgrading the campground such that it becomes compliant.

During the discussions, community members noted problems with the toilets and changing rooms at the foreshore, being vandalism and that the tap in the male facility does not work. **Action:** Committee to raise these matters with Council.

In a response to a question from a community member, Craig Waghorn advised that the Committee currently has ~\$28k which includes ~\$9k donated by the community for stream works. In addition, Craig noted that the Council is giving the Committee leeway in terms of the funds currently held.

A request was also made by a member of the community for a community discussion about firefighting equipment in Little Akaloa. **Action:** Schedule a community meeting to discuss firefighting equipment.

The public section of the meeting concluded at 2.44pm and the following members of the Committee reconvened to decide whether the campground will continue: Craig Waghorn, Jo Allison, Amanda Strong, Mike Williams, Mark Leonard, Wayne Hamilton and Wayne Morris.

The Committee unanimously determined that given the legal and regulatory restrictions regarding operating a campground at the domain (which the Committee is not currently in compliance with), together with the infrastructure upgrade that would be required to comply with other associated requirements, the campground will discontinue effective from 30 June 2023. In addition, the Committee noted that, with the assistance of the Council, notice of the cessation of the operation of the campground will be notified to users and potential users as soon as possible. **Action:** Liaise with the Council to ensure signage is installed (including at Chorlton) and notice given to potential users as soon as possible.

The Committee also unanimously approved the minutes of the meeting of the Committee on 4 February 2023.

The meeting concluded at 2.58pm.

**MINUTES OF A MEETING OF THE PIGEON BAY RESERVE COMMITTEE HELD ON
WEDNESDAY 12 APRIL 2023 4 pm AT PIGEON BAY HALL, PIGEON BAY**

Meeting Opened: 4 pm

Present: Murray Walls(Chair), Sandra Innes, Heather Walls, Brenda Graham, Chris Figg,
Peter Barron, Charles Stewart-Robertson, Matthew Rowley, Colin Jacka, Asif Hussain

Apologies: Helen van Workum, Vince Luisetti, Pam Richardson

Charles/Sandra

**Minutes of the previous meeting dated 27 February as circulated were confirmed. With
the addition of Heather moving and Sandra seconding the apologies.**

Brenda/Charles

Matters arising from the minutes of the previous meeting:

- Apologies at previous meeting - Heather moved Sandra seconded.
- New committee members' induction - everyone agreed that it was thorough and worthwhile.
- Lockbox - this was deferred due to the potential of a co-caretaker joining the team.
- Stone/block walls - remove from agenda until further investigation of the erosion.
- Waiting list - Mike and Julie Young, Brent and Belinda Andrews, Sarah McMurtrie, Darryn Solomon and Laura Griffiths were added to the waiting list *Sandra/Heather*
- Campers' letter - sent.
- Signage at top of Pigeon Bay Road - not a priority at this time but to be kept on the to do list.
- ToR re Jane - Murray has followed up and will continue to work on setting up a meeting. We need to report to the Community Board on our progress with this in August 2023.
- Caretaker's position - the position was advertised. Colin to interview candidate next week.
- Replacement device for caretaker - Colin will organise a new device and cell phone to be issued to the new caretaker. The current device will remain with the current caretaker.

Correspondence in:

1. Site request-Laura Griffiths.

Correspondence out:

1. Regular campers' newsletter.
2. Response to Laura Griffiths.

Charles/Peter

Finance:

- March income and expenditure as circulated by Heather. Term deposits mature in August.
- March statement explained by Colin. Robson's account to be forwarded to CCC to be paid in future.
Sandra/Charles
- After Asif provided some information on accessing government funding Heather has done some preliminary work on accessing funding for erosion protection. We need to follow this up so we are prepared for future funding opportunities.

Caretakers Report:

As circulated.

General Business:

- PBRC ongoing projects - Murray:

The following is a list of ongoing projects, tasks and issues that we are working on in the reserve. They are roughly in order of priority and most are associated with or dependant on item 1 for their outcome.

As we have a large committee and a lot happening, I suggest we form sub-committees to take responsibility who would report back to the committee regularly on their findings/progress/recommendations.

Moved that we form working groups to follow up and report back to the committee with a brief written reports on the following projects.
Brenda/Peter

- Determine what structure the reserve is to be managed under and put that structure in place
Murray, Sandra and subject to their willingness, Pam and Helen.
Brief to also include revise /prepare Strategic and Annual Plans.
- Install an overflow wastewater tank beside the existing 10,000 litre tank.
Matt and Peter
- Update the site plan
Murray and Brenda

- Rainwater holding tank(s) behind the toilet block for plant watering.
Matt and Chris
- Investigate options for stopping the inundation of the ocean into the reserve.
Charles and Chris
- Construct a wind/rain/BBQ shelter in the reserve.
Heather and Peter
- Update planting plan
Murray
- Update the camp rules
All committee members to read the rules and circulate their recommendations
- Regular site fee increase
All committee members to consider this and discuss at next meeting
- Update the 2 road entry signage
Murray
- User group/rūnanga representatives - all user groups are either represented or have been invited to be.
- Vouchers for volunteers - Moved that 2 x \$100 fuel vouchers be purchased as a thank you to Heather, Murray, Helen and Fred for filling the gap while the caretaker was on leave.
Brenda/Sandra
- Camping on the spit, under the macros - It was agreed that it is not acceptable to camp under the trees on the spit. Murray to investigate signage. Colin to provide some heavy duty rope to mark off a no camping area.
- Fires in camp - Sandra will contact the local volunteer fire brigade to ask if they could have someone available should the caretaker require assistance in the case of a camper having a fire in the reserve and not being co-operative.
- Basic first aid kit for caretaker's cupboard - it was decided that the caretaker(s) should provide their own first aid requirements.
- There was some discussion around the development of a management plan which Colin explained would be put forward by the CCC for us to discuss and have input into.

Next Meeting: Wednesday, 24 May 2023 @ Pigeon Bay Settlers Hall, Wharf Road, Pigeon Bay.

Meeting Closed: 5.45 pm

The Okains Bay Reserve Management Committee meeting held on Wednesday 19th April 2023

Present: Wayne Kay (Chairperson), Judy Thacker, Nick Thacker, Graeme Page (Koukourarata representative), Richie O'Malley, Lester Fletcher, Nigel Intemann, Stacey Te Pōhue Rose (Koukourarata representative), Asif Hussain (Banks Peninsula Community Board representative), Amour – Jane Ryan (Camp Manager), Michelle Wallis – Hartley, Denise Tully (TRoNT Senior Environment Advisor), Colin Jacka (CCC Manager Activities and Events), Delia Walker (CCC Recreation Planner), Whitney Cocking (TRoNT Environmental Advisor), Rym Lamrani (CCC Community Development Advisor), Rewakura Ngatai (Executive Officer Koukourarata), Nick Ash and Clayton Spence (via video call).

Apologies: Aaron Leith.

Karakia from Stacey to open the meeting.

Nick introduced himself and spoke to the Board about the idea to hold a music festival in the campground and neighboring farm in November 2023. Clayton (Event organizer) spoke via video call from Coromandel to the Board as he has put on events at Hagley Park for the last 10 years. They would like to include cultural elements in a family environment in Okains Bay. It would be a weekend family friendly event with an eclectic selection of music. Graeme suggested the event organisers should consider holding the event on the neighbouring farm and not in the camp ground. Colin has notes with more information re: planning and potential benefits to the campground and community.

Wayne raised the point of co-ordinating with Koukourarata and Ngai Tahu, as owners of the land, as well as CCC, as Managers of the campground. Lester asked about water usage – trucks to be brought into the Bay and Stacey asked about trucks being able to come into the Bay. Stock trucks, milk tankers and tour buses come into the bay regularly so access should not be a problem. Graeme asked where the stage would be situated and a site plan was shown. Discussion around cost of the event and number of attendees. Graeme suggested documentation be sent out to members for perusal. Colin to distribute planning documents to attendees. Colin thanked Nick and Clayton for their presentation. Discussion will be ongoing till next meeting.

Minutes of the previous meeting: The minutes of the previous meeting held on Wednesday 10th August 2022 were passed as true and correct. *Moved Graeme/Richie seconded. Carried.*

Matters arising: nil.

Health and Safety: Amour told the Board that due to cellphone coverage in the Bay now, campers can call emergency services when needed.

Correspondence: **Inward:** 11/8 email from Katie Matheis re: Agenda for BPCB meeting in Akaroa on Monday 15th August 2022. *Forwarded to all.*

18/8 email from Democracy Services re: BPCB Terms of Reference Consultation Feedback. *Forwarded to all.*

22/8 email from Katie Matheis re: Agenda for meeting in Lyttleton on Monday 29th August 2022. *Forwarded to all.*

6/9 email from Katie Matheis re: Agenda for BPCB meeting in Akaroa on Monday 12th September 2022. *Forwarded to all.*

3/10 email from Raewyn Ogilvie re: Apology from Andrew Turner for upcoming meeting.

21/10 email from Paul McKeefry re: We'd really appreciate your help. *Forwarded to all.*

25/10 email from Paul McKeefry re: Information sessions. *Forwarded to all.*

4/11 email from Paul McKeefry re: Making it easier to operate Council-owned facilities. *Forwarded to all.*

6/12 email from Richie O'Malley re: Apology for upcoming informal December meeting.

7/12 email from Wayne Kay to all Okains Bay RMC members re: Tonight's informal meeting.

8/12 email from Natasha McDonell re: Agenda for meeting on 12th December 2022. *Forwarded to all.*

8/12 email from Natasha McDonell re: protocols for Board election and Terms of Reference requirements.

8/12 email from Graeme Page re: offer of lift to future Okains Bay RMC meetings.

9/1/23 email from Wayne Kay re: Board member election and February meeting.

15/1 email from Wayne Kay re: Election meeting.

24/1 email from Natasha McDonell re: RMC Triennial Election Process Outline.

14/3 email from Liz Beavan re: Agenda for BPCB meeting on 20th March 2023. *Forwarded to all. Nigel Intermann email undelivered. Realised I had misspelt surname.*

30/3 email from Wayne Kay re: April meeting.

6/4 email from Colin Jacka re: why Secretary honorarium payments stopped in March.

6/4 email from Asif Hussain re: Funding Opportunity for Community Groups.

6/4 email from Colin Jacka re: email addresses for new representatives.

9/4 email from Wayne Kay re: Agenda for April meeting. *Forwarded to all.*

11/4 emails from Nick Thacker, Delia Walker, Colin Jacka and Richie O'Malley re: document.

11/4 email from Asif Hussain re: can't open documents. Sent as Word document.

14/4 email from Denise Tully re: Aaron Leith is unable to attend now and Whitney Cocking will there.

14/4 email from Delia Walker re: request for Advisory Group to attend RMC meeting.

14/4 email from Denise Tulley advising Aaron and Denise will be attending the meeting.

Outward: 8/12 email to Graeme Page gratefully accepting offer of lift to meetings.

10/12 email to Banks Peninsula CCC re: intended Board election date and time.

28/2 email to Banks Peninsula CCC re: Board election nominations.

31/3 email to Banks Peninsula CCC re: Approval of elected Board members.

4/4 email to Democracy Services re: Okains Bay RMC meeting dates and times for 2023.

11/4 email to all members re: notification of meeting on April 19th.

12/4 email to all members re: Agenda and minutes for upcoming meeting.

18/4 email to Amour – Jane asking if I could print out copies of minutes for the meeting.

Financial reports: Colin put financial reports on video screen. Graeme noted that the finance report from July 2022 was not tabled at the August meeting so July, August, September, October, November, December 2022 and January, February and March 2023 have not been made available for RMC members to view. This is not acceptable as the Board changed meeting dates to the third week of the month to allow for monthly financial reports to be available for viewing a week before each meeting. Colin agreed and apologized. Finance reports will be sent out a week before the meeting so they can be included with agenda and minutes to all attendees.

General business: # Terms of reference – Delia to look at all Reserve land and parks within Okains Bay.

CCC, TRoNT and Koukourarata representatives met to discuss Terms of Reference for Management Plan. It is important to have cultural awareness. Initial step to consult with runaka and the full process will include consultation with the community. Ongoing.

Maintenance and development of campground – 2 x buildings will be moved over from Spencer Park when consent has been arranged. The arm on gate barrier to campground is playing up and will be sorted out before upcoming season. The cost of topping the trees has escalated so they will be thinned out to lower risk, in the front section of the beach area. The accessible toilet is to be refurbished. The unsightly shower block will be moved to Spencer Park.

Water reticulation is going ahead for the Bay and should be operational by summer 24/25.

A letter was received by Wayne from the Okains Bay Museum requesting the war memorial board in the community hall be relocated to the museum ANZAC display in the Colonial Hall. Delia to report at the next meeting on ownership.

Little Akaloa unofficial campground is to close down at the end of June this year.

Election of Okains Bay RMC secretary. *Moved Graeme/Richie seconded that Sharon be elected on to the Board as Secretary. Carried.*

Amour asked if Darryl Begg, staff member can stay in his caravan over winter as he will be working a few days a week and Amour is going on holiday so he will be able to keep an eye on things. *Moved Wayne/Lester seconded that Darryl can stay through winter. Carried.*

Graeme asked about the two caravans still in campground with no warrant or registration. Colin said they will be gone in two weeks.

Stacey closed the meeting with karakia. Meeting closed at 7 pm. Next meeting on Wednesday June 21st at 5 pm in the campground office.

8. Lyttelton Recreation Centre - Naming

Reference / Te Tohutoro: 22/1368218

Report of / Te Pou	Trisha Ventom, Community Recreation Advisor,
Matua:	Trisha.Ventom@ccc.govt.nz
General Manager /	Mary Richardson, General Manager Citizens & Community
Pouwhakarae:	(Mary.Richardson@ccc.govt.nz)

1. Nature of Decision or Issue and Report Origin

- 1.1 For Te Pātaka o Rākaihautū Banks Peninsula Community Board to approve the gifted name for the Lyttelton Recreation Centre.
- 1.2 At the request of the Lyttelton Recreation Centre Trust Board.
- 1.3 The decision in this report is of low significance in relation to the Christchurch City Council's Significance and Engagement Policy. The level of significance was determined by using the Council's worksheet significance assessment matrix.

2. Officer Recommendations / Ngā Tūtohu

That Te Pātaka o Rākaihautū Banks Peninsula Community Board:

1. Approve the name Mānawa Kāwhiu that has been gifted by Te Hapū o Ngāti Wheke to the Christchurch City Council and the Lyttelton Recreation Centre Trust Board to be used for the Lyttelton Recreation Centre at 25 Winchester Street, Lyttelton.

3. Reason for Report Recommendations / Ngā Take mō te Whakatau

- 3.1 A permanent te reo name for the Lyttelton Recreation Centre was requested and received from Te Hapū o Ngāti Wheke. To date the facility has been using the working title of The Lyttelton Recreation Centre.
- 3.2 The Lyttelton Recreation Centre Trust Board engaged Te Hapū o Ngāti Wheke to develop a cultural narrative that has been weaved through the facility.
- 3.3 The Lyttelton Recreation Centre Trust Board has recommended the name of Mānawa Kāwhiu for the facility as gifted by Te Hapū o Ngāti Wheke.
 - Mānawa Kāwhiu expresses strength from within.
 - Mānawa - strength/strong/value
 - Kāwhiu – a specific type of kete (basket) which is used to gather mahinga kai.
 - This kete provides resources for our community from the ocean to the land.
- 3.4 Accepting the name gifted by Te Hapū o Ngāti Wheke builds on the relationship with The Lyttelton Recreation Centre Trust Board, Papatipu Rūnanga and the Council reflecting understanding and respect, strengthening the commitment to promoting equality, valuing diversity, and fostering inclusion.
- 3.5 Mānawa Kāwhiu reflects local significance paying homage to the facilities unique identity.

4. Alternative Options Considered / Ētahi atu Kōwhiringa

- 4.1 No other alternative options were considered.

5. Detail / Te Whakamahuki

- 5.1 Following earthquake repairs The Lyttelton Recreation Centre re-opened in 2016 and received a new designation as a community facility (previously it was managed by the Council's Recreation and Sports Unit). This meant that the facility was not staffed and that the bookings were managed centrally.
- 5.2 Recognising that the facility was becoming under-utilised the Banks Peninsula Governance Team approached Project Lyttelton, a non-profit grass roots organisation to see if they would be interested in helping to improve the usage of the facility.
- 5.3 In November 2017 the Lyttelton Recreation Activation project was initiated. The role of Project Lyttelton was to be temporary caretakers of the facility whilst another model for wider community ownership was explored and developed. A community partnership framework was established to actively contribute to improved community and individual well-being.
- 5.4 In 2019 a Steering Group was formed to engage the wider community voice and to look towards setting up a community led trust to manage the Lyttelton Recreation Centre.
- 5.5 In December 2019 a community led trust named the Lyttelton Recreation Centre Trust was established. In partnership the parties continue the journey to achieve joint outcomes for the benefit of the Lyttelton and wider community.
- 5.6 From the outset of the partnership, the Lyttelton Recreation Centre Trust Board indicated to council staff of their intent to approach Te Hapū o Ngāti Wheke for the gifting of a new name in Te reo Māori.
- 5.7 The decision affects the following wards/Community Board areas:
- 5.7.1 The decision affects Te Pātaka o Rākaihautū Banks Peninsula Community Board.

6. Policy Framework Implications Ngā Hiraunga ā- Kaupapa here

Strategic Alignment /Te Rautaki Tīaroaro

- 6.1 Adopting the name aligns with the Community Outcomes of celebrating our identity through arts, culture and heritage, valuing the voices of all cultures and a strong sense of community.
- 6.2 This report supports the [Council's Long Term Plan \(2021 - 2031\)](#):
- 6.2.1 Activity: Community Development and Facilities
- Level of Service: 2.0.7 Support community management and activation of facilities through a Council and Community partnership model. - At least 75% of community facilities are activated / managed in partnership with the community

Policy Consistency / Te Whai Kaupapa here

- 6.3 The decision is consistent with Council's Plans and Policies.
- 6.4 The naming of the facility follows the code of practice as set out by the Council's Naming of Reserves and Facilities Policy.

Impact on Mana Whenua Ngā Whai Take Mana Whenua

- 6.5 The decision does not involve a significant decision in relation to ancestral land or a body of water or other elements of intrinsic value, therefore this decision does not specifically impact Mana Whenua, their culture and traditions.
- 6.6 The decision does not involve a matter of interest to Mana Whenua and will not impact on our agreed partnership priorities with Ngā Papatipu Rūnanga.
- 6.7 The name gifting process has enhanced the relationship between Te Hapū o Ngāti Wheke and the Lyttelton Recreation Centre Trust and has only created a positive impact in terms of how this space and land is being utilised.

Climate Change Impact Considerations / Ngā Whai Whakaaro mā te Āhuarangi

- 6.8 Naming a facility does not create climate change impact.

Accessibility Considerations / Ngā Whai Whakaaro mā te Hunga Hauā

- 6.9 There are no accessibility considerations to naming a facility.

7. Resource Implications Ngā Hīraunga Rauemi

Capex/Opex / Ngā Utu Whakahaere

- 7.1 Cost to Implement – The incorporation of a name has already been factored into the project signage budget and therefore does not have any additional cost implication.
- 7.2 Maintenance/Ongoing costs – There are no on-going costs from making these changes.

8. Legal Implications Ngā Hīraunga ā-Ture

Statutory power to undertake proposals in the report / Te Manatū Whakahaere Kaupapa

- 8.1 Te Pātaka o Rākaihautū Banks Peninsula Community Board has authority to approve the naming of its facilities.


Other Legal Implications / Ētahi atu Hīraunga-ā-Ture

- 8.2 There is no legal context, issue or implication relevant to this decision.

9. Risk Management Implications Ngā Hīraunga Tūraru

- 9.1 The name of the facility will be implemented including site signage making it clear to all users accessing the facility.

Attachments / Ngā Tāpirihanga

No.	Title	Reference	Page
A 	Mānawa Kāwhiu - explanation of the proposed name	23/561355	31

In addition to the attached documents, the following background information is available:

Document Name – Location / File Link
Not applicable

Confirmation of Statutory Compliance / Te Whakatūtutanga ā-Ture

<p>Compliance with Statutory Decision-making Requirements (ss 76 - 81 Local Government Act 2002).</p> <p>(a) This report contains:</p> <ul style="list-style-type: none"> (i) sufficient information about all reasonably practicable options identified and assessed in terms of their advantages and disadvantages; and (ii) adequate consideration of the views and preferences of affected and interested persons bearing in mind any proposed or previous community engagement. <p>(b) The information reflects the level of significance of the matters covered by the report, as determined in accordance with the Council's significance and engagement policy.</p>

Signatories / Ngā Kaiwaitohu

Author	Trisha Ventom - Community Recreation Advisor
Approved By	Penelope Goldstone - Manager Community Governance, Banks Peninsula Matthew Pratt - Community Facilities and Activation Manager John Filsell - Head of Community Support and Partnerships

DRAFT COPY DRAFT COPY

Mānawa Kāwhiu

DRAFT COPY 9/12/2022

Pipiri ki te rangi
Pipiri ki te whenua
Pipiri ki te hauora ka ora ai ngā tangata

*“Keep close to the sky
Keep close to the land
Keep close to the health so the people will live”*

The name Mānawa Kāwhiu has been gifted to The Lyttelton Recreation Centre by Te Hapū O Ngāti Wheke.

The Lyttelton Recreation Centre encompasses hauora, a healthy way of living that reinforces and enhances peoples’ lives to become engaged with wellbeing and responsible for their own wellbeing.

Mānawa Kāwhiu expresses strength from within.

Mānawa - strength/strong/value

Kāwhiu - a specific type of kete (basket) which is used to gather mahinga kai.

This kete provides resources for our community from the ocean and land.

Mānawa Kāwhiu symbolizes whānaungatanga, kotahitanga and pūkengatanga. Whilst promoting a space for the community to connect, empowering individuals and groups of a common collective to add energy and value to this building.

Item 8

Attachment A

9. Te Pātaka o Rākaihautū Banks Peninsula 2023-25 Community Board Plan

Reference / Te Tohutoro: 23/572523

Report of / Te Pou
Matua: Andrea Wild, Community Development Adviser,
andrea.wild@ccc.govt.nz

General Manager /
Pouwhakarae: Mary Richardson, General Manager Citizens & Community
(Mary.Richardson@ccc.govt.nz)

1. Purpose of the Report Te Pūtake Pūrongo

- 1.1 The purpose of this report is for the Te Pātaka o Rākaihautū Banks Peninsula Community Board to adopt its 2023-25 Community Board Plan.
- 1.2 This report is staff generated.
- 1.3 The decision in this report is of low significance in relation to the Christchurch City Council's Significance and Engagement Policy.

2. Officer Recommendations Ngā Tūtohu

That Te Pātaka o Rākaihautū Banks Peninsula Community Board:

1. Adopt the Te Pātaka o Rākaihautū Banks Peninsula 2023-25 Community Board Plan.

3. Reason for Report Recommendations Ngā Take mō te Whakatau


- 3.1 The purpose of the Te Pātaka o Rākaihautū Banks Peninsula Community Board Plan (refer **Attachment A**) is to identify the Board's vision and strategic priorities for the 2023-2025 term.
- 3.2 The Community Board Plan will inform the Board's strategic decision-making, and its influence of Council decision-making processes such as the Long Term Plan.

4. Context / Background / Te Horopaki

- 4.1 In line with the Council's Community Outcomes and Strategic Priorities, the Board identified its priorities under the four community outcomes:
 - A collaborative confident city
 - A green, liveable city
 - A cultural powerhouse city
 - A thriving prosperous city
- 4.2 The Community Board Plans also align with the pillars of the Council's Strengthening Communities Together Strategy:
 - People
 - Place
 - Participation
 - Preparedness
- 4.3 A Community Board Plan is a three-year plan that sets out the community board's vision and priorities for the local community.

- 4.4 Each plan identifies up to nine priorities, which the board will focus on during their term. For each priority, the plan includes:
- Why the project matters
 - What actions the Board will take
 - How the Board will measure its success
- 4.5 The nine Te Pātaka o Rākaihautū Banks Peninsula priorities are:
- Proactive planning for climate change
 - Tourism opportunities are balanced with social, cultural, economic and environmental values
 - Protect and enhance biodiversity on Banks Peninsula
 - Improve infrastructure to support community resilience
 - Good social and physical connections for our communities
 - Assist the community to tackle the issues caused by anti-social road users
 - Work with all relevant parties to support Healthy Harbours and Bays
 - All elements of Te Nukutai o Tapoa Naval Point are progressed (off-shore, on-shore and recreation ground)
 - Support community-based solutions for currently unused significant Council-owned sites
- 4.6 The draft Te Pātaka o Rākaihautū Banks Peninsula 2023-25 Board Plan priorities opened for community feedback via the Council's Have Your Say website from 8 March 2023 and closed on 26 March 2023.
- 4.7 A total of 62 submissions were received on the Board's draft priorities.
- 4.8 Submitters were generally very supportive of the proposed priorities.

Attachments Ngā Tāpirihanga

No.	Title	Reference	Page
A 	Te Pātaka o Rākaihautū Banks Peninsula Community Board Plan 2023-25 FINAL	23/659874	36

In addition to the attached documents, the following background information is available:

Document Name – Location / File Link
Not applicable

Confirmation of Statutory Compliance Te Whakatūturutanga ā-Ture

Compliance with Statutory Decision-making Requirements (ss 76 - 81 Local Government Act 2002).

(a) This report contains:

- (i) sufficient information about all reasonably practicable options identified and assessed in terms of their advantages and disadvantages; and

- (ii) adequate consideration of the views and preferences of affected and interested persons bearing in mind any proposed or previous community engagement.

(b) The information reflects the level of significance of the matters covered by the report, as determined in accordance with the Council's significance and engagement policy.

Signatories Ngā Kaiwaitohu

Author	Andrea Wild - Community Development Advisor
Approved By	Matthew McLintock - Manager Community Governance Team John Filsell - Head of Community Support and Partnerships

Te Pātaka o Rākaihautū Banks Peninsula
Community Board
Plan 2023–25



Item 9

Attachment A

Contents

From the Chair..... 3

About local boards and our plans 3

Christchurch City Council’s Strategic Framework..... 4

Strengthening Communities Together Strategy..... 5

Te Pātaka o Rākaihautū Banks Peninsula Board area 6

Key statistics 7

Our vision..... 8

Our priorities 9

Community board funding..... 18

Your local board members 19



From the Chair



Kia ora

I am proud to present our 2022-2025 Community Board Plan on behalf of the Te Pātaka o Rākaihautū Community Board.

This plan is your plan. It's based on the conversations we've had with you, our communities, and has been shaped by your feedback

through the consultation period. The result is a plan that provides an overview of the board's role as well as the geographical area we cover. It also contains our vision for the local community and identifies our shared priorities for action over the next three years.

It is important that we view this plan as a 'living document', which can evolve over time as projects are completed or as circumstances require a change in direction to ensure we continue to achieve our shared priorities.

We look forward to working in partnership with papatipu rūnanga, and local environmental and community groups to achieve the vision we share for this area.

Finally, I would like to take this opportunity to thank everyone who took the time to provide feedback. I hope you can see your priorities, projects and places in this plan.

Ngā mihi

Reuben Davidson, Chairperson

About local boards and our plans

Community boards were created by the local government reforms in 1989.

Approximately 110 community boards now operate in both urban and rural areas within local authorities throughout New Zealand. They carry out functions and exercise powers delegated to them by their councils.

There are six community boards within the Christchurch City Council area.

Local body elections for community board members and councillors are held every three years.

The community board's main role is to:

- Represent and advocate for the interests of its community.
- Consider and report on all matters referred to it by the council, or any matter of interest to the board.
- Maintain an overview of council services in the community.
- Prepare an annual submission to the council for expenditure within the community.
- Communicate with community organisations and special interest groups within the community.

Community board plans

Community board plans are developed every three years and outline the board's key priorities for their elected term. They also indicate how the board will work in partnership with the local community to achieve the council's community outcomes.

A key part of the development of the plan is engagement with the local community and key stakeholders to ensure that the board's priorities reflect the needs and desires of local residents, community groups and businesses in our board area.

What is important to us?

A big picture view of the what the Council is aiming to achieve for our community

Our focus this Council term 2022–2025

Draft Strategic Priorities



Be an **inclusive and equitable city** which **puts people at the centre** of developing our city and district, prioritising wellbeing, accessibility and connection.



Champion Ōtautahi-Christchurch and collaborate to build our role as a leading New Zealand city.



Build trust and confidence in the Council through meaningful partnerships and communication, listening to and working with residents.



Reduce emissions as a Council and as a city, and invest in **adaptation and resilience**, leading a city-wide response to climate change while protecting our indigenous biodiversity, water bodies and tree canopy.



Manage ratepayers' money wisely, delivering quality core services to the whole community and addressing the issues that are important to our residents.



Actively balance the needs of **today's residents** with the **needs of future generations**, with the aim of leaving no one behind.

Our goals for this Long Term Plan 2024–2034

Draft Community Outcomes



Collaborative and confident

Our residents have the opportunity to actively participate in community and city life, have a strong sense of belonging and identity, and feel safe.



Green and liveable

Our neighbourhoods and communities are accessible and well connected, supporting our goals to reduce emissions, build climate resilience and protect and regenerate the environment, especially our biodiversity, water bodies and tree canopy.



A cultural powerhouse

Our diverse communities are supported to understand and protect their heritage, pursue their arts, cultural and sporting interests, and contribute to making our city a creative, cultural and events 'powerhouse'.



Thriving and prosperous

Our city is a great place for people, business and investment where we can all grow our potential, where enterprises are innovative and smart, and where together we raise productivity and reduce emissions.

Our intergenerational vision 2022–2052

A place of opportunity for all.

Open to new ideas, new people, new investment and new ways of doing things – a place where anything is possible.



Ngāi Tahu has rangatiratanga over its takiwā - the Council is committed to partnering with Ngāi Tahu to achieve meaningful outcomes that benefit the whole community

Te Haumako Te Whitingia Strengthening Communities Together Strategy

In 2022, the Council reflected on the 2007 Strengthening Communities Strategy, which made it clear that people value diversity, collaboration, being connected and building capability for the future.

We cannot address the many complex social issues that face our city on our own but can help to develop and nurture networks and bring resources and people together so that collectively we can achieve more.

We know that communities want us to focus more on impact and outcomes, with more emphasis on collaboration and partnership. They want transparency and accountability with measurable goals and actions so we know what's working and what isn't.

We believe this refreshed strategy delivers on this.

The strategy has been organised around four pillars that set out the Council's commitment to working alongside the community over the next ten years.

Strategy Pillars

Te Tāngata People	Whenua Place	Te Mahi Participation	Te Takatū Preparedness
Actively promote a culture of equity by valuing diversity and fostering inclusion across communities and generations.	Support and help build connections between communities to foster a sense of local identity, shared experience and stewardship.	Residents and groups in the wider community are socially and actively engaged and able to initiate and influence decisions affecting their lives.	People feel safe in their communities and neighbourhoods and work together to understand, adapt and thrive in the context of change and disruption.

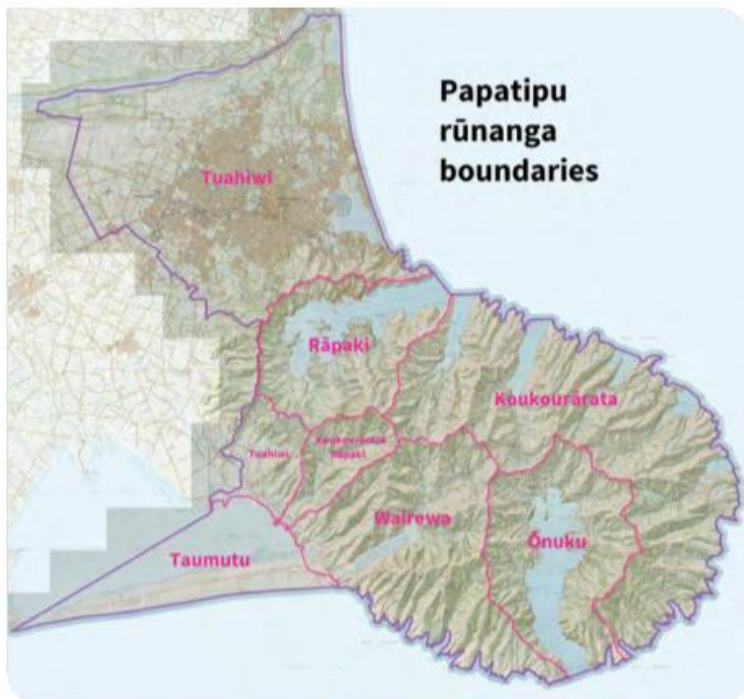
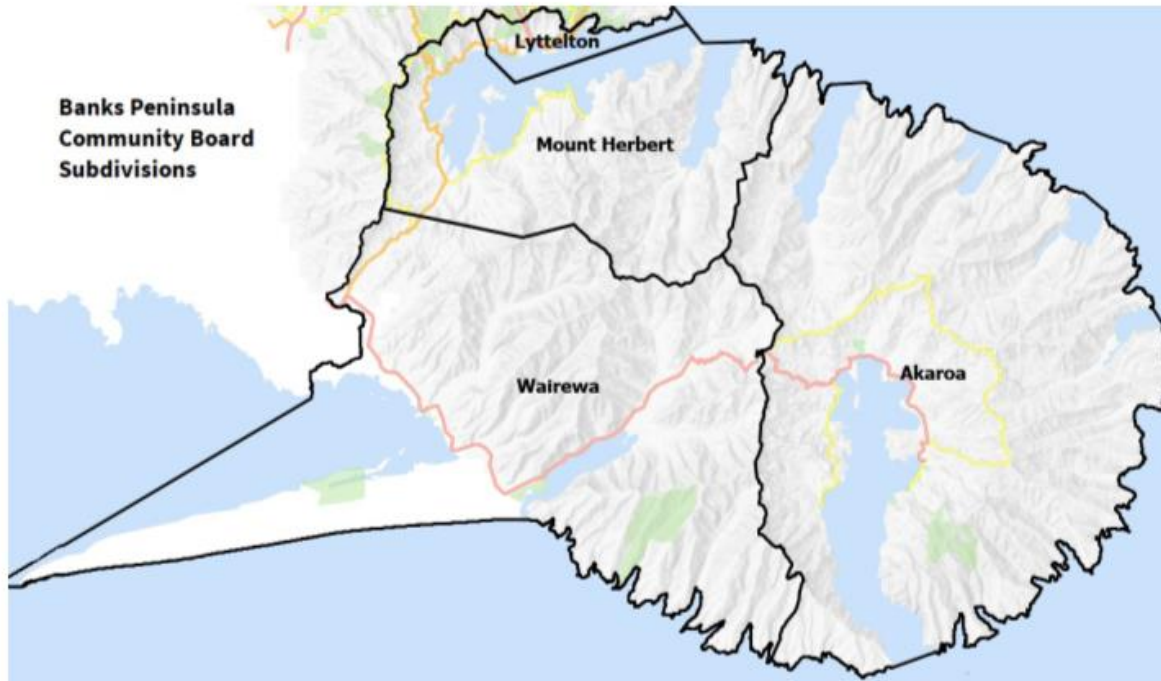
Te Pātaka o Rākahautū Banks Peninsula Community Board is committed to working alongside our local communities to achieve the goals of the strategy. The four pillars above guide us in our decision-making and advocacy on behalf of our residents.

You can view a copy of the Strengthening Communities Together Strategy on the Council's website [here](https://ccc.govt.nz/the-council/plans-strategies-policies-and-bylaws/strategies/strengthening-communities-together-strategy).

(<https://ccc.govt.nz/the-council/plans-strategies-policies-and-bylaws/strategies/strengthening-communities-together-strategy>)



Te Pātaka o Rākaihautū Banks Peninsula Community Board area



Key statistics

This section provides an overview of key statistics for the Te Pātaka o Rākaihautū Banks Peninsula Community Board area. Please note all figures are sourced from the 2018 Census of Population and Dwellings unless otherwise stated.



Papatipu Rūnanga: **6**
Te Hapū o Ngāti Wheke (Rāpaki)
Wairewa Rūnanga (Little River)
Te Ngāi Tūāhuriri Rūnanga
Te Rūnanga o Koukourārata (Port Levy)
Ōnuku Rūnanga (Akaroa)
Te Taumutu Rūnanga



Population:
8,850



Median age:
48.5 years



Median personal income:
\$36,000



Occupied private dwellings:
3,897



Unoccupied private dwellings:
2,127



Household access to internet:
88%



Rented dwellings:
20%



Identify as Māori:
8%



Born overseas:
27%



Approximately **1,398** businesses
employing **2,875** people (Feb 2021)

Key facilities and amenities

- 4 council libraries: Diamond Harbour, Little River, Akaroa, Lyttelton
- 3 council service centres: Little River, Akaroa, Lyttelton
- 145 council parks: 116 local/community parks, 8 garden and heritage parks, 6 sports parks, 15 regional parks
- 14 cemeteries, including 1 green burial cemetery
- 1 Council Museum: Akaroa
- 3 community museums : Okains Bay, Lyttelton and Thornycroft Torpedo Boat Museum
- 6 council-owned social housing complexes with 26 units
- 7 schools: 6 primary, 1 Area School (Akaroa, years 1–13) (no secondary school in Lyttelton Harbour area)
- Lyttelton Port of Christchurch
- 5 volunteer fire brigades (many acting as 'first responders' for a range of incidents): Akaroa, Little
- Major sport and recreation amenities: Norman Kirk Memorial Pool, Charteris Bay Golf Club, Charteris Bay Yacht Club, Lyttelton Recreation Centre, Ōtamahua Quail Island, Orton Bradley Park, Living Springs Camp & Conference Centre, YMCA Wainui Park Camp, Naval Point and Akaroa Boat Ramps, Little River Rail Trail, Akaroa Golf Club, and mountain biking and walking tracks including overnight tramps like the Te Ara Pātaka/Summit Walkway and the Banks Track
- 6 shopping areas: Akaroa, Church Bay, Diamond Harbour, Duvauchelle, Little River and Lyttelton
- 6 papatipu rūnanga within Te Pātaka o Rākaihautū takiwā, 4 of whom have Marae here – Te Hapū o Ngāti Wheke (Rāpaki), Koukourārata (Port Levy), Wairewa (Little River), and Ōnuku (Akaroa). The other two rūnanga are Te Ngāi Tūāhuriri Rūnanga and Te Taumutu Rūnanga

7 Te Pātaka o Rākaihautū Banks Peninsula Community Board Plan 2023–25

Our vision



Listen to and work with community, mana whenua, partners and other organisations to protect and enhance the environmental, social, cultural and economic wellbeing of Banks Peninsula.

Nā tō rourou, nā taku rourou ka ora ai te iwi.



Vision statements

- We are committed to upholding Te Tiriti o Waitangi by engaging well with papatipu rūnanga and holding Te Ao Māori values at the core of our decision-making.
- The views, interests, needs and aspirations of residents are effectively represented.
- We have an open and transparent decision-making process that residents can understand and engage in.
- Our focus is to enhance environmental, cultural, social and economic wellbeing.

Advocacy to external agencies

In addition to the priority areas below where we would hope to have some **direct** influence the Banks Peninsula Community Board will also advocate to other agencies for:

- Improved technical connectivity (fibre, cellular network, power) to keep our many isolated communities connected and safe.
- Support active transport modes (more electric buses, bikes on public transport, light rail, ferry and car share/ community transport schemes,) on Banks Peninsula.
- Installation of more electric car chargers across Banks Peninsula.
- More detailed, frequent, widespread and transparent testing of the waters in the bays.
- Advocate to all appropriate organisations (Ecan, LPC etc.) to ensure that Port, Cruise etc. activities minimise the environmental impact on Whakaraupō and Akaroa Harbours, with particular emphasis on protection of dolphins and other endangered species.

- Encourage private landowners to follow the Council's example of only planting natives on Banks Peninsula.
- **Advocate to FENZ for:**
 - Banks Peninsula's rural communities that are of high fire risk to have fire ponds accessible to them.
 - the development of a management plan for fire protection, including vegetation fire planning, for at risk areas.
- **Advocate to ECan for:**
 - swimmable beaches and rivers on Banks Peninsula.
 - Public transport services to connect Governors Bay to Christchurch and to Lyttelton
 - Alternative ways of providing public transport services on Banks Peninsula to be investigated (for example the MyWay on demand service operating in Timaru instead of a regular bus service).
- **Advocate to LPC to:**
 - remove all derelict infrastructure that it has been paid out for in order to reduce biosecurity risk and support the health of Whakaraupō Lyttelton Harbour.

Our priorities

Proactive planning for climate change

Why this matters:

To enable our communities to be as prepared for, able to respond to and recover from the many hazards which are increasing in frequency and intensity.

What the Board will do:

- Encourage and support community-led resilience planning, including the identification of hazards and risks.
- Encourage the use of ecological initiatives to mitigate natural hazards where appropriate.
- Identify the many opportunities for native planting and ecological restoration, partnering with others to achieve. Initiatives should focus on planting native trees rather than exotics such as pines.
- Provide letters of support and advocacy for private landowners wanting to fence off and protect land for new and regenerating native forest.
- Actively engage in the Coastal Hazards Adaptation Plan process to support those communities most affected by sea level rise. Advocate that climate change adaptation and resilience planning includes climate mitigation measures, so that adaptation activities do not contribute to climate change.
- We will bring together key stakeholders (reserve committees, residents, council Parks Unit, ecologist, rūnanga, etc.) in areas where fire risk is a concern to hear their voices and help inform us on which areas need action and advocacy to FENZ.
- Advocate for local procurement for council contracts delivered on Banks Peninsula.
- Advocate for the installation of solar panels on suitable Council owned buildings (Libraries etc.)

We will measure our success by:

- Resilience plans are completed for at least four settlements across Banks Peninsula with others underway.
- Local groups and organisations involved in ecological initiatives are supported through grants and other mechanisms as appropriate.
- Landowners are supported in their efforts to fence off land for natural regeneration of forest with assistance as requested.
- Adaptation plans will be developed, with community involvement, for the most at-risk communities in the Whakaraupo/Port Levy area to help prepare for the effects of coastal hazards on our communities, infrastructure and environment. These adaptation plans will not include anything that contributes negatively to climate change.
- FENZ and CCC work together to identify fire risk and develop mitigation strategies for at least three areas of concern on Banks Peninsula.
- New procurement opportunities have included the opportunity for local contractors to bid.
- Solar panels are installed on suitable Council owned properties.

Strengthening Communities Together Strategy Pillars:

People ✓ Place ✓ Preparedness ✓

Tourism opportunities are balanced with social, cultural, economic and environmental values

Why this matters:

Tourism has a considerable impact on Banks Peninsula, both positive (business, jobs) and negative (lack of affordable housing, community experience, and environmental impact).

What the Board will do:

- Support ChristchurchNZ in the development of the Banks Peninsula Destination Management Plan by providing advice and guidance and ensuring appropriate community engagement.
- Ensure the Destination Management Plan aligns with the interests and values of the Community Board and its constituency, including but not limited to:
 - protecting and enhancing biodiversity
 - regenerative tourism that gives back more than it takes from host communities, the environment and the ecosystem;
 - promotion of the unique natural features and cultural heritage of Banks Peninsula
 - the infrastructure requirements needed to support both tourism and local residents e.g. number of toilets, signage, parking areas, roads suitable to use, staff accommodation issues and marine structures.

We will measure our success by:

- The Banks Peninsula Destination Management Plan is completed and includes an implementation plan with an agreed process for monitoring/reporting in place.
- The Banks Peninsula Destination Management Plan aligns with the interests and values of the Community Board and its constituency.

Strengthening Communities Together Strategy Pillars:

People ✓ Place ✓ Participation ✓



Cruise ship in Akaroa Harbour

Protect and enhance biodiversity on Banks Peninsula

Why this matters:

We have a unique environment. By supporting and regenerating our flora and fauna through ecological initiatives and sustainable practices, we have the opportunity to provide benefits to the wider region, climate change mitigation and contribute to emission targets.

What the Board will do:

- Support Biodiversity organisations operating on Banks Peninsula with funding, letters of support and advocacy.
- Support the continuation of the Council's Biodiversity Fund to remain at least at its current level or preferably be increased, and support any Targeted Rate for Biodiversity which may be proposed by the Regional Council.
- Advocate that where appropriate new or upgraded public toilets on Banks Peninsula are environmentally friendly, with new technologies explored.
- Advocate to the CCC to complete the assessment of Sites of Ecological Significance (SES) in the Banks Peninsula area.
- Request that Wairewa Reserve 3185 is reclassified as a scientific or scenic reserve to protect all its important natural values.
- Actively support predator and pest control on Banks Peninsula.

We will measure our success by:

- Biodiversity initiatives are supported.
- The Christchurch City Council Biodiversity Fund is retained at least at the current \$400,000 per annum
- Environmentally friendly, context appropriate public toilets are installed wherever possible.
- Progress is made with undertaking an assessment of all Sites of Ecological Significance on Banks Peninsula.
- The process to reclassify Wairewa Reserve 3185 is underway.
- Pest control initiatives are supported.

Strengthening Communities Together Strategy Pillars:

People ✓ Place ✓



Improve infrastructure to support community resilience

Why this matters:

The increased frequency and damage caused by storm events is affecting community resilience.

What the Board will do:

- Work with staff to review levels of service for rural roads and marine structures in light of increased frequency and intensity of storms.
- Advocate for additional funding in the annual and long term plans to enable improvements to publicly owned drainage and stormwater infrastructure, including considering the use of natural means for dealing with stormwater and drainage.
- Monitor the progression of the creation of rating districts with Environment Canterbury to support local land drainage works.

We will measure our success by:

- We understand the current levels of service for rural roads and marine structures.
- We have an opportunity to contribute to the review of levels of service for rural roads and marine structures through the long term planning process.
- Capital and operational funding is increased for drainage/stormwater infrastructure on Banks Peninsula.
- Progress is made towards establishing rating districts in those communities that have expressed an interest in this approach (e.g. Little Akaloa and Le Bons Bay).

Strengthening Communities Together Strategy Pillars:

Preparedness ✓



Diamond Harbour Wharf

Good social and physical connections for our communities

Why this matters:

Community connection supports wellbeing and reduces isolation.

What the Board will do:

- Work with local communities to manage and/or develop community facilities that support community connection.
- Support community organisations that deliver social services, build community capacity and/or undertake initiatives to connect their communities with funding, letters of support and advocacy.
- Advocate for connected walkways to enable children to safely walk to school.
- Support for improved walking tracks and pedestrian linkages.
- Advocate for improved cycling access and facilities around Banks Peninsula.
- Support car share/community transport schemes on Banks Peninsula.

We will measure our success by:

- Communities have access to local community facilities and are supported to manage them.
- All eligible community organisations and events designed to connect our communities and reduce isolation are supported with funding or other assistance as requested.
- Planning is undertaken to provide safe routes for children to walk to school (including but not limited to connections between West Lyttelton and Lyttelton Primary School, within Governors Bay, Diamond Harbour and connections between Cooptown and Little River Primary School).
- The Board, staff, hapu and community work together to improve walking connections within Rāpaki, the Head to Head Walkway and other walking tracks.
- Little River community is supported in its efforts to establish a community transport scheme.

Strengthening Communities Together Strategy Pillars:

People ✓ Place ✓



Port Levy Community Hall

Assist the community to tackle the issues caused by anti-social road users

Why this matters:

Our communities endure considerable noise disturbance and road safety issues.

What the Board will do:

- Engage with community and investigate options for mitigation, including supporting the idea of a community-led noise camera trial.
- Encourage the Council, community and police to work together to tackle this issue.
- Advocate to Council that some of the safety budget is allocated to tackling the anti-social road users issue.

We will measure our success by:

- Receive deputation/public forum on this topic and ask staff to investigate
- Staff actively work on this issue and report back to the board
- An appropriate budget for this work is allocated which allows a collaborative response to the issue.

Strengthening Communities Together Strategy Pillars:

People ✓ Place ✓ Preparedness ✓



Work with all relevant parties to support Healthy Harbours and Bays

Why this matters:

Our harbours and bays provide important cultural, recreational and social opportunities for mana whenua, residents and visitors.

What the Board will do:

- Advocate for a stormwater management plan for Banks Peninsula that is informed by local experience as well as data.
- Advocate at long term plan hearings for funding to address flooding of a rural origin (i.e. from the hills around settlements) which will not receive automatic funding through the LTP as part of a stormwater management plan.
- Support the Whaka-Ora Healthy Harbour programme of work to restore the ecological and cultural health of Whakaraupō-Lyttelton Harbour as mahinga kai.

We will measure our success by:

- A Banks Peninsula Stormwater Management Plan is completed and funding allocated to implement it.
- Engage with three waters regulators to ensure we are preventing stormwater runoff entering our harbours.
- High levels of investment in stormwater management.
- Councillors are aware of rural flooding issues on Banks Peninsula and funding is allocated to help address this.
- Funding provided to support biodiversity and biosecurity restoration work, including community led restoration programmes
- Installation of trial sites completed and monitoring progressed for reducing erosion on roadside embankments where there is not a risk of uncontrolled flows entering the road corridor.

Strengthening Communities Together Strategy Pillars:

People ✓ Place ✓



Quail Island

All elements of Te Nukutai o Tapoa - Naval Point are progressed (off-shore, on-shore and the recreation ground)

Why this matters:

This is a popular marine and recreation area for Lyttelton, Christchurch and Canterbury residents.

What the Board will do:

- Support quality and meaningful engagement with staff, rūnanga, stakeholders and community.
- Advocate for continued implementation of the development plan.
- Advocate for funding required to implement the plan in full.

We will measure our success by:

- Ngāti Wheke and staff are aligned with design and outcomes of Te Nukutai o Tapoa Plan.
- Stakeholders feel fully enabled with supporting detailed design planning.
- Opportunities to support recreational and event use of the site are maximised.
- Barriers to the effective and efficient use of the site are minimised (e.g. support relocation of haul out, removal of old marina, maximising public/organised event space sharing, minimising misuse by vehicles).
- Implementation of Te Nukutai o Tapoa-Naval Point Development Plan is fully funded through the annual and long term plans.
- The long term plan includes funding to implement all elements of Te Nukutai o Tapoa-Naval Point Development Plan.

Strengthening Communities Together Strategy Pillars:

People ✓ Place ✓ Participation ✓



Te Nukutai o Tapoa

Support community-based solutions for currently unused significant Council-owned sites

Why this matters:

Sites of significant value to the community, either strategically or because of heritage value need to have a future use determined.

What the Board will do:

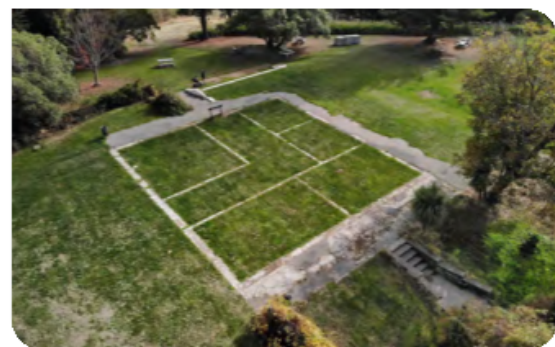
- **BP Meats Site** (Akaroa)
 - Request staff investigate uses for this land.
 - Advocate for community solutions, including accommodation for workers and young families.
- **Donald Street Stables** (Lyttelton)
 - Continue to seek an appropriate future use for this vacant heritage building.
- **Former Godley House site** (Diamond Harbour)
 - Continue to work with the community and council staff to find a way to enable the community vision for the former Godley House site.
- **Hunters Road** (Diamond Harbour)
 - Work with Council staff and the community to identify future uses, development, disposal/retention and management strategies for the Hunters Road site.
 - Request an assessment of the site for its potential to grow indigenous trees for long-term carbon-sequestration, either by natural regeneration or strategic (ecologically beneficial) planting, as part of the Council's drive to become a carbon-neutral city.

We will measure our success by:

- A proposal is developed for the future use and development of the BP Meats site which broadly achieves the objectives of the community.
- A future use is found for Donald Street Stables.
- The community is consulted about the proposal Council has received to develop the former Godley House site. If the community is happy with the proposal we (Community Board) will approve a lease to the applicant.
- A spatial plan and outline development plan is developed for the Hunters Road site which will be incorporated into the district plan. These plans will incorporate:
 - community views and preferences about the future use of the site.
 - any site constraints (e.g. geotechnical).
 - any features/natural values that may require protection (e.g. landscape, biodiversity).
 - technical advice (e.g. infrastructure networks, including transport, stormwater facilities).
 - An assessment of the site's suitability as an area for natural regeneration or revegetation.

Strengthening Communities Together Strategy Pillars:

Place ✓



Former Godley House site

Community board funding

In Christchurch, Community Board funding is allocated to each board based on population and equity. The NZ Deprivation Index is the tool used to measure the equity portion of the allocation. The Council uses the formula of 60% population and 40% equity when determining the allocations to each board.

The community board has three funding schemes available for allocation each year and for the 2022-23 funding year, had a total funding pool of \$153,171.

Strengthening Communities Fund

An annual contestable funding round – opens in March/April each year. Provides funding for the period of 1 September to 30 August each year.

The purpose of this fund is to support community-focused organisations whose projects contribute to the strengthening of community wellbeing in the Christchurch city area.

Successful organisations will be those which demonstrate they are sustainable, strategic, community-focused groups which have a significant presence within their community of benefit. Successful projects will also clearly demonstrate their contribution to the council's funding outcomes and priorities. Organisations must be able to demonstrate their ability to contribute towards their project(s) and not rely on council funding as their sole source of funding.

Discretionary Response Fund

Open for applications all year – 1 July to 30 June.

The purpose of this fund is to assist community groups where the project and funding request falls outside other council funding criteria and/or closing dates. This fund is also for emergency funding for unforeseen situations.

Community board projects (events and awards) are also funded from this fund.

Youth Development Fund

The purpose of the Youth Development Fund is to celebrate and support young people living in the Te Pātaka o Rākaihautū Banks Peninsula Community Board area by providing financial assistance for their development. The community board also seeks to acknowledge young people's effort, achievement and potential excellence in the community.

The community board will consider applications for the following activities:

- **Personal Development and Growth** – For example leadership training, career development, Outward Bound, Spirit of Adventure, extra-curricular educational opportunities.
- **Representation at Events** – Applicants can apply for assistance if you have been selected to represent your school, team or community at a local, national or international event or competition. This includes sporting, cultural and community events.

You can find more about community funding, [here](https://ccc.govt.nz/culture-and-community/community-funding).
(ccc.govt.nz/culture-and-community/community-funding)



Your local board members



Reuben Davidson

Chairperson

Lyttelton subdivision

Mobile: 0272 555 899

Email: Reuben.Davidson@ccc.govt.nz



Nigel Harrison

Deputy Chairperson

Akaroa Subdivision

Mobile: 022 289 7019

Email: Nigel.Harrison@ccc.govt.nz



Cathy Lum-Webb

Lyttelton Subdivision

Mobile: 020 4092 1247

Email: Cathy.LumWebb@ccc.govt.nz



Howard Needham

Mount Herbert Subdivision

Mobile: 021 256 7524

Email: Howard.Needham@ccc.govt.nz



Luana Swindells

Mount Herbert Subdivision

Mobile: 020 4105 9882

Email: Luana.Swindells@ccc.govt.nz



Lyn Leslie

Waiwera Subdivision

Mobile: 027 392 8485

Email: Lyn.Leslie@ccc.govt.nz



Asif Hussain

Akaroa Subdivision

Mobile: 022 098 5812

(Text only due to limited coverage)

Email: Asif.Hussain@ccc.govt.nz



Tyrone Fields

Councillor

Banks Peninsula Ward

Mobile: 021 100 4590

Email: Tyrone.Fields@ccc.govt.nz

The Te Pātaka o Rākaihautū Banks Peninsula Community Board generally meets on the second Monday of each month at 10 am to 4.30pm at Lyttelton, Little River or Akaroa. These meetings are open to the public and live-streamed on our Youtube channel [here](https://www.youtube.com/channel/UC66K8mOifQT3I4rOLwGbeug). (www.youtube.com/channel/UC66K8mOifQT3I4rOLwGbeug).

Agendas and minutes for each meeting can be found on the council's website at ccc.govt.nz.

If you would like to speak at a board meeting please contact the Community Board Adviser on **03 941 6601**.



10. L'aube Hill Reservoir - Tree Removal and Temporary Reservoir Location

Reference / Te Tohutoro: 23/541743

Report of / Te Pou Marie Holland, Project Manager 3 Waters,
Matua: marie.holland@ccc.govt.nz

General Manager / Mary Richardson, General Manager Citizens & Community
Pouwhakarae: (Mary.Richardson@ccc.govt.nz)

1. Nature of Decision or Issue and Report Origin

- 1.1 Approval to remove small trees and woody shrubs and locate a temporary reservoir to enable a water supply upgrade project to proceed.
- 1.2 This report has been written to support a Three-Waters project for the upgrade of water supply in Akaroa.
- 1.3 The decision in this report is of low significance in relation to the Christchurch City Council's Significance and Engagement Policy. The level of significance was determined by having a low impact on the general public, whilst having benefits for the future water supply in Akaroa.

2. Officer Recommendations Ngā Tūtohu

That Te Pātaka o Rākaihautū Banks Peninsula Community Board:

1. Approve the removal of up to 18 trees within L'aube Hill Reserve to enable the construction of water supply tanks within the water treatment plant (As per 4.7 of the Tree Policy) and
2. Approve a temporary water reservoir to be located and constructed within that part of the reserve identified in the report on the meeting agenda to enable the upgrade of the Akaroa water supply.

3. Reason for Report Recommendations Ngā Take mō te Whakatau

- 3.1 The project is part of a long-term water supply programme and will improve water security for Akaroa.
- 3.2 For the upgrade of the Akaroa water supply, the existing temporary tanks need to be removed from within the Water Treatment Plant and will clear the area to build the two (2) new water reservoirs. A new temporary water supply is required for the duration of the build.

4. Alternative Options Considered Ētahi atu Kōwhiringa

- 4.1 There are no viable alternative locations within the site to relocate the temporary Klijitank due to site constraints such as limited space, contouring of the site and other existing vegetation.

5. Detail Te Whakamahuki

- 5.1 As part of Councils long term planning (refer to LTP Water Supply – Asset renewal 64986 page 225) there has been a project initiated by the water and wastewater unit to replace the decommissioned L'Aube Hill Reservoir with two (2) permanent reservoirs and to convert the

- decommissioned reservoir into a temporary water storage use while the permanent tanks are being constructed.
- 5.2 The temporary Kliptank located within the water treatment plant requires removal to enable the construction of two (2) permanent water tanks. These permanent tanks will provide the potable water supply to Akaroa. A site has been identified approximately 135m west from the decommissioned tank's current location (see below diagrams in paragraph 5.10) into the neighbouring property, which is classified as Local Purpose (Reservoir) Reserve. The temporary tank is required to be within the vicinity of the water treatment plant for piping and connection purposes and will be the temporary potable water supply to Akaroa. The construction of the permanent tanks is expected to take two (2) years.
 - 5.3 A tree survey was carried out by Warner Tree Care Limited in March 2023 of the temporary site where Eighteen (18) trees were identified that could be affected by the temporary tank relocation.
 - 5.4 Four (4) different species have been identified - Sycamore, Tree Lucerne, Macrocarpa & Ngaio.
 - 5.5 Sycamore, Tree Lucerne, Macrocarpa are all fast growing exotic weed species. Usually, Tree Lucerne is considered a shrub but has been included in the survey. Ngaio is a common, fast growing native shrub or small tree.
 - 5.6 Based on their health and structure, seventeen (17) of the trees overall condition has been classed as poor or very poor (LH01, LH02, LH04), one (1) tree has been classed as fair condition (LH03). Several of the trees have average vigour with up-to 30% foliage density loss, have basal decay issues, are being suppressed, multiple dead branches, already failed at the root plate or is covered in old man's beard.
 - 5.7 The heights of the of the trees range from 4-9 metres.
 - 5.8 The temporary tank requires a 25m diameter base, and the final placement detail has not been confirmed so it may not be necessary to be remove all the identified trees. However, staff request approval to remove all trees in advance to prevent future delays with the works.
 - 5.9 There is expected to be replacement planting carried out to meet the two (2) for one (1) specification outlined in the Tree Policy 1.0 - Tree Planting.
 - 5.10 After the permanent tank construction has been completed, and the temporary tank has been removed from site in approximately two (2) years' time the site will be reinstated, and new plantings will occur.

Tree ID Map Ref	Location	Species	Height(m)	Canopy Spread(m)	DBH(m)	Overall Condition	Comment
LH01	L'aube Hill Reserve	<i>Myoporum laetum</i> x1 (Ngaio) <i>Acer pseudoplatanus</i> x1 (Sycamore)	7.0- 9.0	3.5- 8.5	0.20 - 0.25	4 (Poor)	Trees have average vigour with up-to 30% foliage density loss. Sycamore tree is growing within 1m of base of Ngaio tree and up through the crown. Ngaio tree has multiple dead branches within the crown, up-to 30% decline. Tree is covered in vine (old man's beard).
LH02	L'aube Hill Reserve	<i>Myoporum laetum</i> x9 (Ngaio) <i>Cupressus macrocarpa</i> x2	4.0- 9.0	3.0- 10	0.09 - 0.35	4 (Poor)	Trees have average vigour with up-to 30% foliage density loss. Group of mostly Ngaio trees growing together. Multiple dead branches within crowns, up-to 30% decline. 2x Macrocarpa's within the group, smaller tree has a dead top and has failed at rootplate. Larger tree has poor form, due to significant suppression from adjacent trees.
LH03	L'aube Hill Reserve	<i>Myoporum laetum</i> (Ngaio)	6.0	7.0	0.20	3 (Fair)	Trees have average vigour with less than 30% foliage density loss. Ngaio tree is multi-stemmed near ground level, with a Toe growing close to the base of tree. Ngaio tree has minor deadwood within the crown. Tree is covered in vine (old man's beard)
LH04	L'aube Hill Reserve	<i>Chamaecytisus palmensis</i> x4 (Tree Lucerne)	6.0- 7.0	4.0- 6.0	0.10 - 0.25	4/5 (Poor/ V.Poor)	Trees have poor/ very poor vigour with more than 30% foliage density loss. One large tree has failed at rootplate and fallen over but is still alive, one tree is dead. The two remaining trees have structural issues, significant decay at base and partially failed rootplate

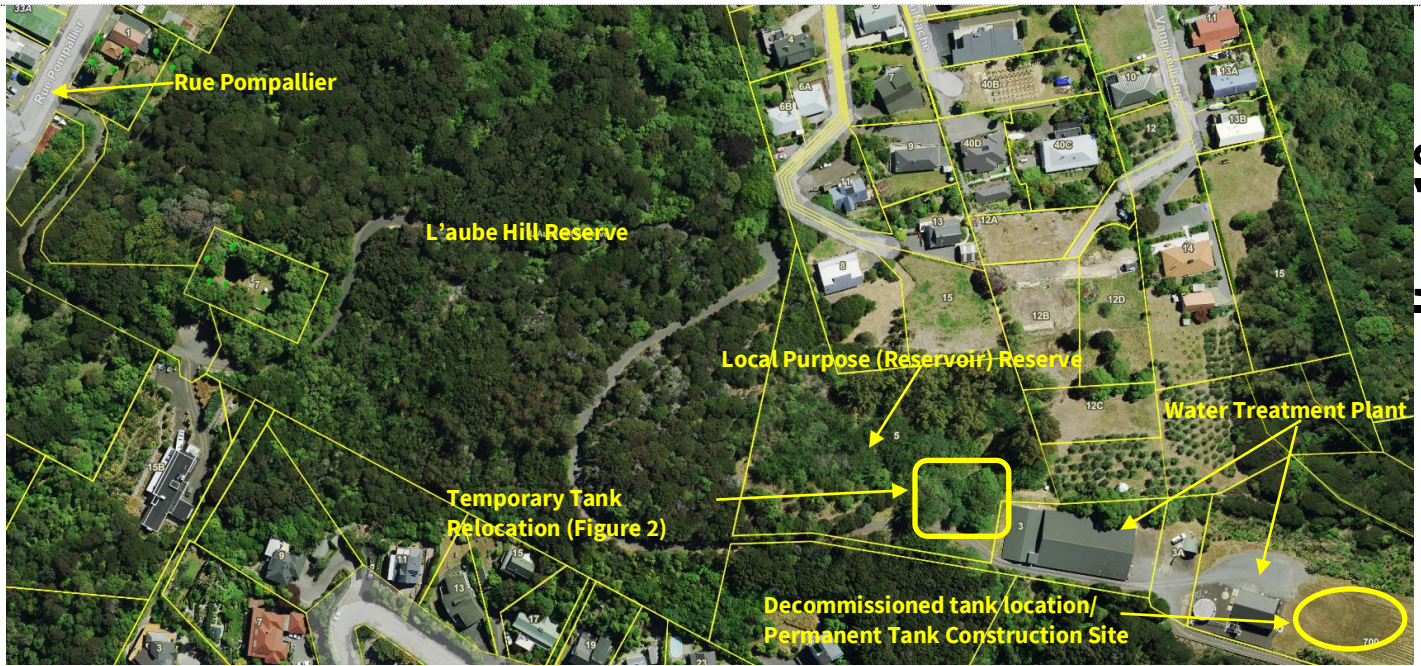


Figure 1: Aerial map, overview of the site.

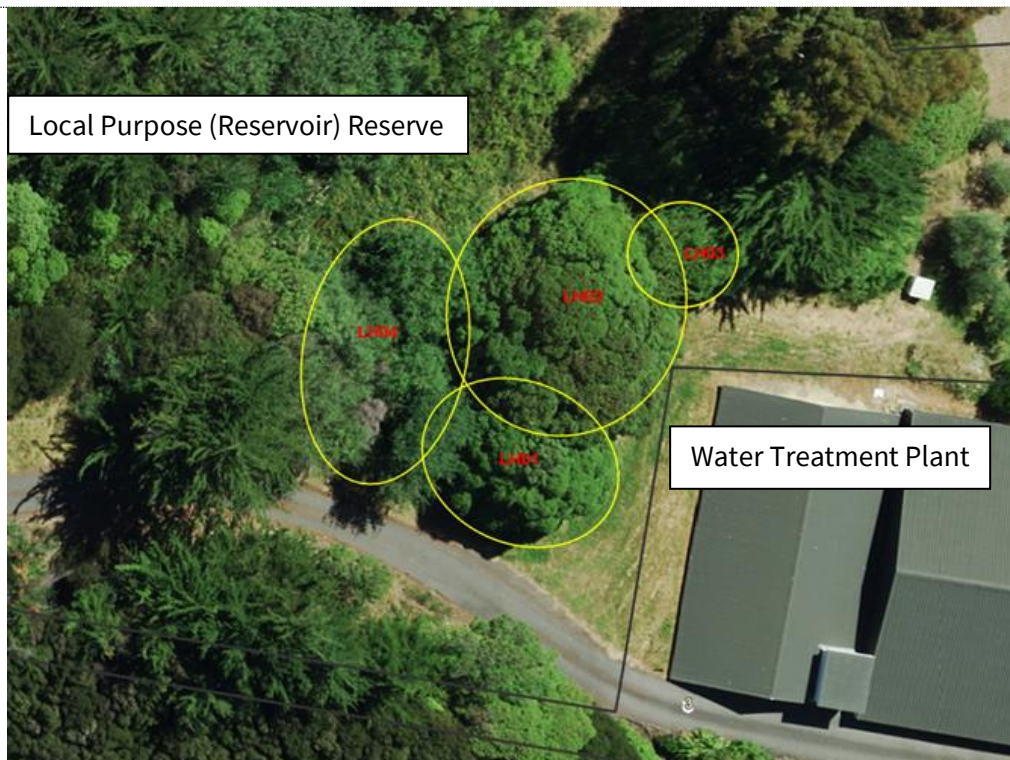


Figure 2: Aerial map of the surveyed tree locations.

5.11 The decision affects the following wards/Community Board areas:

5.11.1 Te Pātaka o Rākaihautū Banks Peninsula Community Board.

6. Policy Framework Implications Ngā Hīraunga ā- Kaupapa here

Strategic Alignment Te Rautaki Tīaroaro

6.1 This report supports the [Council's Long Term Plan \(2021 - 2031\)](#):

6.1.1 Activity: Water Supply

- Level of Service: 12.0.2.1 Proportion of customers connected to water supply zones with an up to date Water Safety Plan - 1

Policy Consistency / Te Whai Kaupapa here

6.2 The decision is consistent with Council's Plans and Policies. The removal of the trees is in alignment with 4.7 of the Tree Policy which states:

6.3 *4.7 Approval by Council for the removal of trees to facilitate projects on Council Land will take into account the value of the project to the community, including public health and/or the local environment and considerations taken for retaining existing trees compared with the loss of the benefits provided by the trees.*

6.4 The replanting requirements will meet 1.9 of the Tree Policy which states *For every tree removed a minimum of two new trees will be planted with the projected canopy cover replacing that which is lost within 20 years (additional planting may be required)*

Impact on Mana Whenua Ngā Whai Take Mana Whenua

6.5 The decision does not involve a significant decision in relation to ancestral land or a body of water or other elements of intrinsic value, therefore this decision does specifically impact Mana Whenua, their culture and traditions.

Climate Change Impact Considerations Ngā Whai Whakaaro mā te Āhuarangi

6.6 Minor Climate Change impacts, in the long term more trees and plants will be replanted.

Accessibility Considerations Ngā Whai Whakaaro mā te Hunga Hauā

6.7 Not expected to have any impact to use of the area by locals.

7. Resource Implications Ngā Hīraunga Rauemi

Capex/Opex Ngā Utu Whakahaere

7.1 Cost to implement the programme of works is covered in the current budget, project CPMS 64986.

7.2 Maintenance/Ongoing costs sit outside of this project.

7.3 Funding Source – the project is funded through Council's Long Term Plan.

8. Legal Implications Ngā Hīraunga ā-Ture

Statutory power to undertake proposals in the report Te Manatū Whakahaere Kaupapa

8.1 Community Boards have been delegated the authority to both approve the location of and construction of structures on reserves providing the design is within the policy and budget set by Council and to remove trees on reserves within the policy set by Council.

8.2 These delegations can be found on pages 95 and 96 respectively in the Delegations Register.

Other Legal Implications Ētahi atu Hīraunga-ā-Ture

8.3 There is no legal context, issue or implication relevant to this decision.

9. Risk Management Implications Ngā Hīraunga Tūraru

- 9.1 If approval is not given for the removal of the trees and building of a new temporary reservoir the Three-Waters project for the upgrade of water supply in Akaroa cannot go ahead.

Attachments Ngā Tāpirihanga

There are no attachments to this report.

In addition to the attached documents, the following background information is available:

Document Name – Location / File Link
Not applicable

Confirmation of Statutory Compliance Te Whakatūturutanga ā-Ture

Compliance with Statutory Decision-making Requirements (ss 76 - 81 Local Government Act 2002).

(a) This report contains:

- (i) sufficient information about all reasonably practicable options identified and assessed in terms of their advantages and disadvantages; and
- (ii) adequate consideration of the views and preferences of affected and interested persons bearing in mind any proposed or previous community engagement.

(b) The information reflects the level of significance of the matters covered by the report, as determined in accordance with the Council's significance and engagement policy.

Signatories Ngā Kaiwaitohu

Authors	James McDuff - Aboricultural Advisor Marie Holland - Project Manager Stuart McLeod - Property Consultant Angus Smith - Manager Property Consultancy
Approved By	Brent Smith - Acting Head of Three Waters

11. Te Pātaka o Rākaihautū Banks Peninsula 2022-23 Discretionary Response Fund: Living Streams Community Nursery - Irrigation System; The Loons Club - ANZAC Day Commemoration Celebration in Lyttelton; Akaroa District Promotions - Contingency Funding

Reference / Te Tohutoro: 23/489924

Report of / Te Pou
Matua: Philipa Hay, Community Development Advisor,
Philipa.hay@ccc.govt.nz;

General Manager /
Pouwhakarae: Mary Richardson, General Manager Citizens & Community
(Mary.Richardson@ccc.govt.nz)

1. Purpose of Report Te Pūtake Pūrongo

- 1.1 The purpose of this report is for the Te Pātaka o Rākaihautū Banks Peninsula Community Board to consider an application for funding from its 2022-23 Discretionary Response Fund from the organisations listed below.

Funding Request Number	Organisation	Project Name	Amount Requested	Amount Recommended
65333	The Living Streams Community Nursery Trust	Irrigation System – purchase and installation	\$5,000	\$4,000
65698	The Loons Club Incorporated	ANZAC Day Commemoration Celebration in Lyttelton	\$500	\$500
65048	Akaroa District Promotions Incorporated	Contingency Funding	\$5,000	\$4,000

- 1.2 There is currently a balance of \$37,056 remaining in the fund

2. Staff Recommendations / Ngā Tūtohu

That Te Pātaka o Rākaihautū Banks Peninsula Community Board:

- Approves a grant of \$4,000 from its 2022-23 Discretionary Response Fund to The Living Streams Community Nursery Trust towards an automatic irrigation system.
- Approves a grant of \$500 from its 2022-23 Discretionary Response Fund to The Loons Club Incorporated towards the ANZAC Day commemoration celebration in Lyttelton.
- Approves a grant of \$4,000 from its 2022-2023 Discretionary Response Fund to Akaroa District Promotions Inc. towards operational funding to enable a review of purpose and identification of potential funding opportunities.

3. Key Points Ngā Take Matua

Strategic Alignment Te Rautaki Tīaroaro

3.1 Living Streams Community Nursery Trust:

The recommendation is strongly aligned to the Strategic Framework and in particular the strategic priority of 'Meeting the challenge of climate change through every means available'. It will provide capacity for increased production of plants grown from locally sourced seed for community groups and individuals by ensuring a sustainable water supply.

3.2 The Loons Club Incorporated:

The recommendation is strongly aligned to the Strategic Framework and in particular the strategic priority of 'Enabling active and connected communities to own their future'. It will provide support for celebration of our identity through heritage, and by contributing towards connectedness and a strong sense of community.

3.3 Akaroa District Promotions Incorporated:

The recommendation is strongly aligned to the Strategic Framework and in particular the strategic priority of 'Enabling active and connected communities to own their future'. It will contribute to a prosperous economy.

Decision Making Authority Te Mana Whakatau

3.4 The Community Board has the delegated authority to determine the allocation of the Discretionary Response Fund for each community

3.4.1 Allocations must be consistent with any policies, standards or criteria adopted by the Council

3.4.2 The Fund does not cover:

- Legal challenges or Environment Court challenges against the Council, Council Controlled organisations or Community Board decisions
- Projects or initiatives that change the scope of a Council project or that will lead to ongoing operational costs to the Council (though Community Boards can recommend to the Council that it consider a grant for this purpose).

Assessment of Significance and Engagement Te Aromatawai Whakahirahira

3.5 The decisions in this report are of low significance in relation to the Christchurch City Council's Significance and Engagement Policy.

3.6 The level of significance was determined by the number of people affected and/or with an interest.

3.7 Due to the assessment of low significance, no further community engagement and consultation is required.

Discussion Kōrerorero







3.8 At the time of writing, the balance of the 2022-23 Discretionary Response Fund is as below.

Total Budget 2022/23	Granted To Date	Available for allocation	Balance If Staff Recommendation adopted
\$56,406	\$19,350	\$37,056	\$28,556

3.9 Based on the current Discretionary Response Fund criteria, the applications listed above are eligible for funding.

- 3.10 The attached Decision Matrices provide detailed information for the applications. This includes organisational details, project details, financial information and a staff assessment.

Attachments Ngā Tāpirihanga

No.	Title	Reference	Page
A  	Living Streams Community Nursery Trust - Irrigation System	23/565744	66
B  	The Loons Club Incorporated - ANZAC Commemoration Celebration in Lyttelton	23/565651	67
C  	Akaroa District Promotions - Contingency Funding Matrix	23/582134	68

Confirmation of Statutory Compliance Te Whakatūtutanga ā-Ture

Compliance with Statutory Decision-making Requirements (ss 76 - 81 Local Government Act 2002).

(a) This report contains:

- (i) sufficient information about all reasonably practicable options identified and assessed in terms of their advantages and disadvantages; and
- (ii) adequate consideration of the views and preferences of affected and interested persons bearing in mind any proposed or previous community engagement.

(b) The information reflects the level of significance of the matters covered by the report, as determined in accordance with the Council's significance and engagement policy.

Signatories Ngā Kaiwaitohu

Authors	Philipa Hay - Community Development Advisor Andrea Wild - Community Development Advisor Rym Lamrani - Community Development Advisor Jane Harrison - Community Development Advisor Trisha Ventom - Community Recreation Advisor
Approved By	Penelope Goldstone - Manager Community Governance, Banks Peninsula

2022/23 DRF BANKS PENINSULA DECISION MATRIX

Priority Rating

One	Meets all eligibility criteria and contributes significantly to Funding Outcomes and Priorities. Highly recommended for funding.
Two	Meets all eligibility criteria and contributes to Funding Outcomes and Priorities. Recommended for funding.
Three	Meets all eligibility criteria and contributes to Funding Outcomes and Priorities but to a lesser extent than Priority 2 applications. Not recommended for funding.
Four	Meets all eligibility criteria and has minimum contribution to Funding Outcomes and Priorities / Insufficient information provided by applicant (in application and after request from Advisor) / Other funding sources more appropriate. Not recommended for funding.

65333	Organisation Name	Name and Description	Total Cost	Contribution Sought Towards	Staff Recommendation	Priority
	The Living Streams Community Nursery Trust	Irrigation System - purchase and installation Purchase and install an automatic irrigation system in Living Streams native plant nursery at Little River. Contribution sought towards irrigation system.	\$12,070 Requested \$ 5,000 (41% requested)	Irrigation System: Purchase and installation - \$12,070	\$ 4,000 That Te Pātaka o Rākaihautū Banks Peninsula Community Board approves a grant of \$4,000 from its 2022-23 Discretionary Response Fund to the Living Streams Community Nursery Trust towards an automatic irrigation system.	2

<p>Organisation Details</p> <p>Service Base: Private Residence Legal Status: Charitable Trust Established: 1/12/2010 Target Groups: Environment Annual Volunteer Hours: 2,600 Participants: 2,000</p> <p>Alignment with Council Strategies</p> <ul style="list-style-type: none"> Strengthening Communities Together Strategy Biodiversity Strategy Climate Resilience Strategy <p>CCC Funding History</p> <p>2021/22 - \$4,000 (Nursery Co-ordination and Operational Costs) SCF</p> <p>2020/21 - \$1,500 (Native Plant Propagation) - Sustainability Fund Rd 1</p> <p>2020/21 - \$4,000 (Operational Costs) SCF</p> <p>Other Sources of Funding</p> <p>Funds in hand. No applications granted or pending.</p>	<p>Staff Assessment</p> <p>The Living Streams Community Nursery Trust (Trust), based next to the Christchurch City Council (Council) Service Centre/Library in Little River, aims to promote conservation and regeneration of native plants within the Mount Herbert ecological district and in particular to restore vegetation along the streams and riverbanks. The Trust grows native plants for community groups and local organisations to use in restoration/regeneration projects, mainly within this area, but also sells to homeowners, landowners and for conservation areas and parks. The nursery was established in 2004, moved to its present site behind the Little River Service Centre on land leased from the Council in 2014, and in 2016 formed a charitable trust. The Trust has a paid project manager who is supported by volunteers, who give their time to collect seeds and cuttings, tend the growing plants and sell them. They also support local initiatives and fundraisers, to which plants are often donated. The number of plants grown and sold has increased yearly. In 2019 the Trust leased an additional section of Council-owned land adjacent to the original site which has enabled the Trust to propagate many more plants - over 11,000 were sold last year.</p> <p>This project is for purchase and installation of an automatic irrigation system for the nursery. The request includes purchase of the hardware (pipework, fittings, sprinklers etc.), transport and installation. Currently volunteers are relied on to hand water the plants. The Trust states that while people are willing, they are mostly retired and are often away, and so it is difficult to maintain regular watering - an automatic system will ensure regular watering, essential for the growing plants. The Trust has been liaising with Council staff who have sourced and will deliver and install a 30,000 litre tank within a few months, providing the capacity required for the irrigation system and for the nursery's growing needs. This gift has reduced the project cost by \$5,633 (per quote). Last summer, there were days when the tank currently used had no water for the plants. The Trust advises that although they have sufficient funds to cover the proposed irrigation system, last year the Trust employed a permanent part-time Nursery Manager and any expansion of their operation to enable supply of plants to meet demand will require investment in infrastructure, all drawing on their funds in reserve.</p> <p>Rationale for recommendation:</p> <ul style="list-style-type: none"> Strong alignment with the Council's Strengthening Communities Together Strategy, Biodiversity Strategy and Climate Resilience Strategy Support from Council Staff to gift the tank, installed and in working order. Recommendation is consistent with percentage of original request Increased plant production for large orders for bigger projects will enable the Trust to be more financially self-sufficient, requiring less in grants The Trust contributes to community planting efforts by donating plants. Its orders for trees contribute to local environmental/reforestation projects Groups, individuals, and visitors to Little River purchase plants suited to local conditions; contribute to local ecology/biodiversity, stream health The nursery is largely run by volunteers and is a place of connection and learning for local community members.
--	---

2022/23 DRF BANKS PENINSULA DECISION MATRIX

Priority Rating

One	Meets all eligibility criteria and contributes significantly to Funding Outcomes and Priorities. Highly recommended for funding.
Two	Meets all eligibility criteria and contributes to Funding Outcomes and Priorities. Recommended for funding.
Three	Meets all eligibility criteria and contributes to Funding Outcomes and Priorities but to a lesser extent than Priority 2 applications. Not recommended for funding.
Four	Meets all eligibility criteria and has minimum contribution to Funding Outcomes and Priorities / Insufficient information provided by applicant (in application and after request from Advisor) / Other funding sources more appropriate. Not recommended for funding.

65698	Organisation Name	Name and Description	Total Cost	Contribution Sought Towards	Staff Recommendation	Priority
	The Loons Club Incorporated	ANZAC Day Commemoration Celebration in Lyttelton The Loons Club will host an event to follow the official 2023 ANZAC Ceremony held in Lyttelton. The morning tea will be for those who attend the commemorations, with the aim of bringing the community together on this important day. Contribution is sought towards printing costs, catering, entertainment and heritage 'prop' hire.	\$ 2,200 Requested \$ 500 (23% requested)	Printing Costs - \$100 Catering - \$200 Entertainment - \$100 Heritage Prop Hire - \$100	\$ 500 That Te Pātaka o Rākaihautū Banks Peninsula Community Board approves a grant of \$500 from its 2022-23 Discretionary Response Fund to the Loons Club Incorporated towards the ANZAC Day commemoration celebration in Lyttelton.	1

<p>Organisation Details Service Base: 16 Canterbury Street Legal Status: Incorporated Society Established: 1/01/1959 Target Groups: Community Development Annual Volunteer Hours: 10,000 Participants: 300</p> <p>Alignment with Council Strategies</p> <ul style="list-style-type: none"> Strengthening Communities Together <p>Community Board Priorities</p> <ul style="list-style-type: none"> Our communities are strong, connected and foster a sense of belonging: Honouring the sacrifice of previous generations brings communities together with a common focus. The cultural heritage of Banks Peninsula is valued and enhanced: This local event honours those who have served in the armed services. Others who provide support for the local communities participate in the event and are acknowledged. <p>CCC Funding History 2021/22 - \$1,000 (Audio Equipment) DRF 2021/22 - \$7,000 (Operational costs) SCF 2020/21 - \$1,000 (Operational costs/wages) SCF</p> <p>Other Sources of Funding Business Sponsorship - to be confirmed</p>	<p>Staff Assessment This project is being recommended as a Priority One due to the reach, impact, value for money and wider history of ANZAC Commemorations held on 25 April in the four Banks Peninsula communities and the morning tea events which follow.</p> <p>For 25 April 2023, the Loons Club Incorporated (the Club) is planning to host an ANZAC Day celebration at their venue following the official ceremony held at the cenotaph in Lyttelton a block away. This will be the third year they will provide morning tea and family entertainment for the community members that attend the commemoration service. A band has also been hired for the celebration. This event brings the community together - the Club expects it to be better than last year, with support again from community sponsorship.</p> <p>The Club's objectives include providing and supporting the wider Lyttelton community by promoting a sense of community connection and wellbeing. The Club's building has been part of the history of Lyttelton for over a century, but was damaged in the Christchurch earthquakes and after significant refurbishment reopened as a purpose-built space in 2020 - the first ANZAC morning tea was held the following year and this has been hosted annually since.</p> <p>Historically, morning tea events held in Lyttelton had been supported by the community board of the day (as has continued to be the case in Little River, Akaroa and Diamond Harbour), until local service groups took over this responsibility some years ago. More recently, this was no longer possible and The Club undertook to fill this need in 2021. This application was lodged just prior to the event, after the Club became aware that it could apply for grant funding. Thus, any allocation will be determined after the event has taken place and the Club will tailor the event accordingly. The Club was advised to apply to the Strengthening Communities Fund for future events (starting 2024).</p> <p>Rationale for the staff recommendation:</p> <ul style="list-style-type: none"> Strong alignment with the Strengthening Communities Together Strategy (especially 'People' and 'Place' pillars) Strong support for the observance of ANZAC Day in the Lyttelton community, with local service groups participating actively in the service and attendance by a diverse range of community members – young and older. This is the only such event for the Lyttelton community. These 'cup of tea' functions afterwards provide immeasurable social benefit as community members interact with each other and their elected members. In a small community this day is a true example of people meeting together with a common focus. The historic relationship and role Banks Peninsula-based community boards have provided in supporting this event and funding provision would put this event on a similar footing to those held in the three other Banks Peninsula Ward subdivisions.
---	--

2022/23 DRF BANKS PENINSULA DECISION MATRIX

Priority Rating

One	Meets all eligibility criteria and contributes significantly to Funding Outcomes and Priorities. Highly recommended for funding.
Two	Meets all eligibility criteria and contributes to Funding Outcomes and Priorities. Recommended for funding.
Three	Meets all eligibility criteria and contributes to Funding Outcomes and Priorities but to a lesser extent than Priority 2 applications. Not recommended for funding.
Four	Meets all eligibility criteria and has minimum contribution to Funding Outcomes and Priorities / Insufficient information provided by applicant (in application and after request from Advisor) / Other funding sources more appropriate. Not recommended for funding.

65048	Organisation Name	Name and Description	Total Cost	Contribution Sought Towards	Staff Recommendation	Priority
	Akaroa District Promotions Inc	Contingency Funding Akaroa District Promotions Incorporated is a business association with the aim of promotion of Akaroa. They have a current shortfall in funds and request contingency funding to support them to continue in the short term whilst other funding becomes available.	\$ 5,000 Requested \$ 5,000 (100% requested)	Operational costs – 5,000	\$ 4,000 That Te Pātaka o Rākaihautū Banks Peninsula Community Board approves a grant of \$4,000 from its 2022-2023 Discretionary Response Fund to Akaroa District Promotions Inc. towards operational funding to enable a review of purpose and identification of potential funding opportunities.	2

Organisation Details Service Base: 80 Rue Lavaud, Akaroa Legal Status: Incorporated Society Established: 14/07/1992 Target Groups: Business association Annual Volunteer Hours: 137 Participants: 50 Alignment with Council Strategies <ul style="list-style-type: none"> Strengthening Communities Together Strategy CCC Funding History 2021/22 - \$4,000 (Lumiere d'Akaroa) BP SCF 2020/21 - \$4,000 (Lumiere d'Akaroa) BP SCF 2019/20 - \$10,000 (Event programme and service delivery) BP SCF 2018/19 - \$10,000 (Service delivery) BP SCF 2018/19 - \$2,000 (Lumiere d'Akaroa) BP DRF Other Sources of Funding Nil	Staff Assessment In the past couple of years, Akaroa District Promotions Incorporated (ADP) have faced a few challenges (Covid-19, loss of tour operators as members due to large cruise ships no longer visiting, staff changes) which has led them to the financial position they are facing today. ADP is primarily a business association rather than a community group, and therefore needs to clearly demonstrate their impact on the community in order to obtain grants from some funders (including Christchurch City Council). They have lost major funding in the past couple of years (Rātā) for that reason. Staff have worked with ADP in recent years in identifying potential funding streams and providing general support. ADP hold a lease with the Christchurch City Council for space in the service centre building in Akaroa. They have benefited from rent relief for two years from 1/02/2021 to 1/02/2023, which represents \$3,496 (+GST), as part of the Covid-19 response from Christchurch City Council. The ADP Board will consult with its members as to the future direction they would like the organisation to take. All members have been busy with the tourist season in the past few months, and in the meantime, ADP needs time to enable the organisation to identify their direction and potential funding streams. The rationale for the staff recommendation is: <ul style="list-style-type: none"> Grant provision will enable ADP time to identify their direction and potential funding streams whilst they continue to provide support to local businesses ADP plays a unique role in promoting small businesses in Akaroa and therefore supporting local employment opportunities especially outside the high tourist season The ADP Board is dedicated to achieving the continuance of its organisation Support from Te Pātaka o Rākaihautū Banks Peninsula Community Board is necessary for ADP to continue its activities in the short term
--	--

12. Te Pātaka o Rākaihautū Banks Peninsula Community Board Area Report - May 2023

Reference / Te Tohutoro: 23/209255

Report of / Te Pou
Matua: Penelope Goldstone, Community Governance Manager,
Penelope.Goldstone@ccc.govt.nz

General Manager /
Pouwhakarae: Mary Richardson, General Manager Citizens & Community
(Mary.Richardson@ccc.govt.nz)

1. Purpose of Report Te Pūtake Pūrongo

This report provides the Board with an overview on initiatives and issues current within the Community Board area.

2. Officer Recommendations Ngā Tūtohu

That Te Pātaka o Rākaihautū Banks Peninsula Community Board:

1. Receive the Te Pātaka o Rākaihautū Banks Peninsula Community Board Area Report for May 2023.

3. Community Support, Governance and Partnership Activity

3.1 Community Governance Projects

Activity	Detail	Timeline	Strategic Alignment
Lyttelton Recreation Ground	Planning continues to re-configure the fields at the Lyttelton Recreation Grounds. This includes connections to and from the area, proposed facilities and layouts.	On-going	

3.2 Community Funding Summary

3.2.1 2022/23 Discretionary Response Fund

- Te Pātaka o Rākaihautū Banks Peninsula Community Board Discretionary Response Fund has an unallocated balance for 2022/23 of \$37,056. The Board's Youth Development Fund is allocated directly from Discretionary Response Fund.
- 2022/23 Youth Development Fund – One application since the Board's 11 April meeting was received and allocated funding, approved by delegation:
 - Edward Lopas from the Wairewa Subdivision, was allocated a grant of \$300 towards the World Under 23 Rowing Championships, 17 - 24 July 2023 in Plovdiv, Bulgaria.
- The 2022/23 Discretionary Response Funding Summary is **attached** for record purposes. **(Attachment A)**.

- ##### 3.2.2 2023/24 Strengthening Communities Fund
- This is the annual funding round for Board grants. This fund closed for applications at midnight on Friday 14 April 2023 with nearly 30 applications received for the Banks Peninsula Ward and with requests

totalling over \$420,000. Groups may apply for operational or project costs incurred in the provision and delivery of their initiative/s for the timeframe 1 September 2023 to 31 August 2024, however multi-year funding for up to three years may be approved. Allocation decisions are made in August by the Board.

3.3 Participation in and Contribution to Decision Making

3.3.1 Report back on other Activities contributing to Community Board Plan [for items not included in the above table but are included in Community Board Plan]

- **Norman Kirk Pool, Lyttelton** - The total pool participations for this summer season, 2022/23 was 8,060. This compares to 7,289 participations for the previous season 2021/22, an increase of 771 participants. This includes the delivery of two successful pool parties and the community led Hydro-Cise programme provided for older adults. The new season commences November 2023.
- **Draft Community Board Plan 2023-25** – The Board held a workshop on 11 April 2023 to consider the community feedback on the Board’s Draft Community Board Plan. The Board will be adopting the plan at its 8 May 2023 meeting.
- **Start Work Notices** – Various Start Work Notices have been sent to the Board throughout the month. All Board area and city-wide start work notices can be found at: <https://ccc.govt.nz/transport/works..>

3.3.2 Council Engagement and Consultation.

- **Christchurch City Council’s Draft Annual Plan 2023/24** – Attached is the Board’s submission to the Council’s Draft Annual Plan 2023/24. (**Attachment B**).
- **Have your Say** – at the time of writing the report the following consultations were open within the Community Board Area and city-wide consultation:

Topic	Closing Date	Link
Little River Wairewa dog exercise area trail	8 May 2023	https://ccc.govt.nz/the-council/haveyoursay/show/554

3.4 Governance Advice

3.4.1 Board Requests – The Board made the following requests at its 11 April 2023 Meeting:

- Request staff advice on the naming options for Reserve 1259.
- Request staff advice on the maintenance schedule to clear the Akaroa beaches of debris and what actions are carried out prior to a storm to alleviate the impact of debris being washed up on the streets and facilities in Akaroa.
- Agrees to write to Waka Kotahi New Zealand Transport Agency raising its concerns about road work sites being set up with no contractors working on site.
- Requests staff advice on the progress with addressing the issues and/or upgrading the Wairewa Little River public toilets.
- Requests staff advice on the Council applying to the Ministry of Business, Innovation & Employment Tourism Infrastructure Fund to upgrade the Wairewa Little River toilets, Takapūneke, and Britomart Memorial Reserve, Akaroa.
- Requests staff advice on progress of the communal fire storage for communities in Banks Peninsula project.

- Seeks staff advice on the seasonal removal of the bollards at Lyttelton Recreation Grounds to allow additional parking during the rugby season.

3.4.2 **Board Briefings** – The Board received the following briefings during April 2023:






- Review of Governance Partnership Agreement and Delegations.
- Draft Destination Management Plan Banks Peninsula Pre-Consultation.
- Akaroa Heartlands Activities.

3.4.3 **Board Workshop** – The Board held a workshop in April 2023 looking at the community consultation feedback on the draft Community Board Plan 2023-25.

4. Advice Provided to the Community Board

- 4.1 **Electric Vehicle Charging Banks Peninsula** – Memorandum in reply to the Board’s 11 July 2022: *That the Te Pātaka o Rākaihautū Banks Peninsula Community Board request an update from staff on any planned additions of electric vehicle charging points on Banks Peninsula, including information on whether communities can fundraise and install their own points. (Attachment C).*
- 4.2 **Impact of Cruise Ships** – Board letter in reply to the Board’s 13 February 2023 request: *That the Te Pātaka o Rākaihautū Banks Peninsula Community Board agreed to write letter to the Ministers of Transport, Tourism and Climate Change to outline the environmental impact of cruise ships visiting Lyttelton/New Zealand and what steps can be taken. (Attachment D).*
- 4.3 **Customer Service Requests Report** – providing an overview of the number of Customer Service Requests that have been received, including the types of requests being received and a breakdown of how they are being reported from 1 March 2023 to 31 March 2023 is attached. (Attachment E).

Attachments Ngā Tāpirihanga

No.	Title	Reference	Page
A 	2022/23 Discretionary Response Summary - May 2023	23/552476	73
B 	Te Pātaka o Rākaihautū Banks Peninsula Community Board Submission to the Council's Draft Annual Plan 2023/24	23/498685	74
C 	Memorandum: Electric Vehicle Charging Banks Peninsula - 12 April 2023	23/528027	76
D 	Letter to Ministers of Transport, Tourism and Climate Change on the Impact of Cruise Ships visiting Lyttelton/New Zealand	23/583531	78
E 	Customer Service Requests - March 2023	23/564150	112

Signatories Ngā Kaiwaitohu

Authors	Liz Beaven - Community Board Advisor Leonie Hall - Support Officer Jane Harrison - Community Development Advisor Philipa Hay - Community Development Advisor Adrianna Hess - Banks Peninsula Governance Advisor Rym Lamrani - Community Development Advisor Natasha McDonnell - Banks Peninsula Governance Advisor Trisha Ventom - Community Recreation Advisor Andrea Wild - Community Development Advisor
Approved By	Penelope Goldstone - Manager Community Governance, Banks Peninsula Matthew McLintock - Manager Community Governance Team John Filsell - Head of Community Support and Partnerships

Banks Peninsula Discretionary Response Fund 2022/23		Board Approval
BUDGET		
Transfer of unallocated 2022/23 Strengthening Communities funds to the 2022/23 Discretionary Response Fund	\$45,401.00	15/08/2022
Shape Your Place Toolkit	\$0.00	
Carry Forward from 2021/22	\$11,005.00	
Unused DRF/YDF Funds Returned		
Total BUDGET	\$56,406.00	
ALLOCATIONS MADE:		
Discretionary Response Fund		
Community Board - ANZAC Day 2023 Wreaths & Diamond Harbour Grant	\$ 1,000.00	15/08/2022
Community Board - Summer with your Neighbours 2022/23	\$ 3,000.00	15/08/2022
Okains Bay School Board of Trustees – 150th Celebrations	\$ 2,000.00	12/09/2022
Little River Farmers Market Inc. - Little River Farmers Market 2022/23	\$ 1,800.00	7/11/2022
Little River Craft Station Inc. - Information Station	\$ 2,500.00	11/04/2023
Diamond Harbour & Districts Health Support Group - Health Centre Upgrade consent costs	\$ 8,250.00	11/04/2023
Discretionary Response Fund Allocated	\$18,550.00	
Youth Development Fund		
Nishad Kant - Basketball (Invercargill)	\$150.00	18/08/2022
Lucy Luxford - Optimist Sailing (New Caledonia)	\$200.00	20/09/2022
Abby Laird - basketball tournament	\$150.00	30/09/2022
Edward Lopas - Rowing Championships (Bulgaria)	\$300.00	11/04/2023
Youth Development Fund Allocated	\$800.00	
Shape Your Place Toolkit	\$ -	
Shape Your Place Toolkit Allocated	\$ -	
TOTAL: Shape Your Place Toolkit Unallocated	\$ -	
TOTAL: Discretionary Response Fund Unallocated	\$37,056.00	
Pending Board Approval		
Pending Board Approval Balance		
TOTAL: Discretionary Response Fund Remaining if Pending approved	\$37,056.00	
Funds reserved:		
Allandale Truck Yard Lease Allocation	\$30,030.00	

SUBMISSION TO: The Christchurch City Council

ON: Christchurch City Council Updated Draft Annual Plan 2022/23

BY: Te Pātaka o Rākaihautū Banks Peninsula Community Board

CONTACT Reuben Davidson
Chairperson Te Pātaka o Rākaihautū Banks Peninsula Community Board
c/- Penelope Goldstone, Community Governance Manager
PO Box 73 029, Christchurch 8154
Phone: 941 5689 Email: Penelope.goldstone@ccc.govt.nz

1. INTRODUCTION

1.1 Te Pātaka o Rākaihautū Banks Peninsula Community Board (the “Board”) appreciates the opportunity to submit on the Christchurch City Council Draft Annual Plan 2022/23.

1.2 The Board’s statutory role is “to represent, and act as an advocate for, the interests of its community” and “to prepare an annual submission to the territorial authority for expenditure within the community” (Local Government Act 2002, Section 52). The Board is providing this submission in its capacity as a representative of the communities in the Banks Peninsula Ward – Akaroa, Ōhinehou Lyttelton, Te Waipapa Mount Herbert, and Wairewa Little River.

1.3 The Board’s Vision is:

Listen to and work with community, mana whenua, partners and other organisations to protect and enhance the environmental, social, cultural and economic wellbeing of Banks Peninsula.

Nā tō rourou, nā taku rourou ka ora ai te iwi.¹

1.4 The Board wishes to be heard in support of this submission.

2. SUBMISSION

Board Priority: Proactive Planning for Climate Change

Our isolated, and our vulnerable communities across the Peninsula are more susceptible to the risks of climate change and natural disasters. The Board believes that it has a responsibility to ensure equitable provision and access to the basic resources of water supply, electricity, communication connectivity, and future proofed infrastructure that the city enjoys.

2.1 Coastal Hazards Adaptation Planning Programme – The damage impact of continual storms on the Akaroa Harbour and the Eastern Bays of the Banks Peninsula is a high concern for those communities. The Board appreciate the work that the Coastal Hazards Adaptation Planning Programme has been doing in the Whakaraupō Lyttelton Harbour however, the Board strongly believe that Akaroa and the Eastern Bays needs to be included earlier in the Coastal Hazards Adaptation Planning Programme.

¹ Te Pātaka o Rākaihautū Banks Peninsula Community Board Community Board Plan 2023-25

2.2 Board Priority: Improve infrastructure to support community resilience

Retaining Walls Repair and Maintenance – Retaining walls are a feature amenity in the Banks Peninsula ward. The Board were recently briefed by staff on the retaining walls repair and maintenance. The Board see a need to increase the future budget for the repair and maintenance on retaining walls within Te Pātaka o Rākahautū Banks Peninsula Community ward.

2.3 Board Priority: Assist the community to tackle the issues caused by anti-social road users

Kōtuitui Smart Poles – The Board have agreed to work with the New Zealand Police to identify “hot spots” for Kōtuitui Smart Poles and seek future budget for these installations. These Kōtuitui Smart Poles improve connectivity in the community and encourage the public to be more engaged with smart technologies. The poles are equipped with a range of smart features including a free Wi-Fi network, CCTV cameras linked to the police network, advanced lighting fixtures, pedestrian and vehicle counters, and speakers for public alerts. The Board therefore proposes that funding be allocated to these installations in support of the Board Plan priorities to “Improve infrastructure to support community resilience” and “Tackle the issues caused by anti-social road users”.

2.4 Board Priority: Good social and physical connections for our communities

Community Parks Rolling Renewal Programme – the Board were briefed and have considered 2023/24 Community Parks Rolling Renewal Programme. The Board agrees with the Community Parks Rolling Renewal Programme for Banks Peninsula.

2.5 Other Comments:

Akaroa Museum – The Board recently visited the Akaroa Museum. The Board were briefed and were shown the museum facilities. The Board acknowledge this outstanding Council asset and do not support any decrease in the museum’s funding.

Council Properties Proposed Disposal – The Board support the identified Council properties within the Banks Peninsula ward. The Board wishes to remind the Council that the Board does not support the disposal of the Council owned land in Hunters Road, Diamond Harbour being available for disposal and support the work of an outline development plan that is currently being developed.



Reuben Davidson

Chairperson

Te Pātaka o Rākahautū Banks Peninsula Community Board

Memos



Memo

Date: 12 April 2023
From: Michael O'Dea; Acting Team Leader Climate Resilience
To: Te Pātaka o Rākaihautū Banks Peninsula Community Board
Cc: David Griffiths; Head of Strategic Policy and Resilience
Reference: 23/523824

Electric Vehicle Charging Banks Peninsula

1. Purpose of this Memo

- 1.1 The purpose of this memorandum is to reply to the Board's 11 July 2022 request:

That the Te Pātaka o Rākaihautū Banks Peninsula Community Board request an update from staff on any planned additions of electric vehicle charging points on Banks Peninsula, including information on whether communities can fundraise and install their own points.

- 1.2 The information in this memo is not confidential and can be made public.
1.3 This memo provides that update and closes the minuted action.

2. Update

- 2.1 Electric Vehicle Charging Points at Council-Owned Off-Street Parking Buildings & Facilities
- 2.1.1 The Council has a project to increased availability of Electric Vehicle Charging Points at Council-Owned Off-Street Parking Buildings & Facilities. This will support the gradual shift of NZ vehicle fleet from petrol/diesel to all electric vehicles, and contribute to Council's objective of being carbon neutral by 2045.
- 2.1.2 The aim of this project is to have 5% of all car parks in Council Owned parking facilities to be EV charging enabled.
- 2.1.3 A programme of work and capital budget (\$4M) has been set aside for this work with a rollout programme from 2024 – 2030. The Transport Asset planning unit is responsible for the delivery of this programme.
- 2.1.4 Where facilities are undertaking ground work for future work programmes, horizontal infrastructure for electric charging (ducting) is being funded to reduce rework.
- 2.1.5 Due to capacity constraints, priority has been given to Climate Emergency Response Fund co-funded transport projects, delaying the implementation of the programme.
- 2.2 Banks Peninsula
- 2.2.1 Council owned and operated facilities on the Peninsula with designated off-street would be eligible for consideration in the EV charging project. Council owned, community operated facilities may be considered if there is no Council owned and operated facilities suitable.

Memos



- 2.2.2 This does not stop other potential private providers of EV charging to source and fund charging locations on their owned sites. (i.e tourist, service stations, accommodation, sports clubs, communities) with appropriate consent, health and safety, and infrastructure.
- 2.2.3 In these circumstances, the revenue and liabilities and maintenance expenses would sit with the private provider.
- 2.2.4 Government subsidiaries are available through the Low Emission Transport Fund (LETf) administered by EECA Te Tari Tiaki Pungao (the energy efficiency and conservation authority)
- 2.2.5 The Ministry of Transport has also released a consultation document on an EV charging strategy, to which staff will submit due to technical nature of the strategy. They are considering a new governmental department to compete with petrol stations. They are also setting targets for infrastructure.

Attachments Ngā Tāpirihanga

There are no attachments to this memo.

Signatories Ngā Kaiwaitohu

Author	Michael O'Dea - Programme Manager (CO)
Approved By	David Griffiths - Head of Strategic Policy & Resilience



20 April 2023

Minister of Transport Hon. Michael Wood
m.wood@ministers.govt.nz

Minister of Tourism Hon. Peeni Henare
p.henare@ministers.govt.nz

Minister of Climate Change, Hon. James Shaw
j.shaw@ministers.govt.nz

Kia ora Ministers Wood, Henare and Shaw

Impact of Cruise Ships

Te Pātaka o Rākaihautū Banks Peninsula Community Board are privileged to represent the Banks Peninsula ward of the Christchurch City Council.

At the 13 February 2023 meeting of Te Pātaka o Rākaihautū Banks Peninsula Community Board, the Board heard from multiple members of the community regarding their concerns on the impact of cruise ships on both our local environment and on Aotearoa New Zealand. This raises issues on the style of future tourism for Banks Peninsula and New Zealand, and how this relates to the Ministry of Business, Innovation and Employment (MBIE) guidelines for sustainable and regenerative tourism. Further, it raises important issues around our national approach to addressing the role transport-related CO2 emissions play in climate change.

After hearing from residents, the Board agreed to write this letter to highlight the environmental impact of cruise ships and what steps can be taken.

The Board seek the following:

1. The Board are concerned that the cruise industry is not sufficiently regulated in regard to CO2 emissions for New Zealand to meet its international climate change obligations. The Board are wanting further information on the Government's position on reducing the cruise industry's CO2 emissions.
2. That the information from the Board's public forum presentations (attached) be a factor in the Minister's approval of the Destination Management Plan – Banks Peninsula.
3. That a clear and achievable pathway to a sustainable or regenerative tourism sector be a priority for the Minister/Government. The Board seeks information on how the Minister/Government would ensure a sustainable or regenerative tourism sector be developed for Aotearoa New Zealand.

The Board look forward to hearing from you regarding these issues and questions, so that we can answer our communities' concerns.

Nga mihi,



Reuben Davidson, Chairperson
Te Pātaka o Rākaihautū Banks Peninsula Community Board

Lyttelton Recreation Centre
25 Winchester Street, Lyttelton
PO Box 73027
Christchurch 8154
Email:
Banks.Peninsula@ccc.govt.nz
ccc.govt.nz



Venice
Barcelona
Akaroa...

Lyttelton

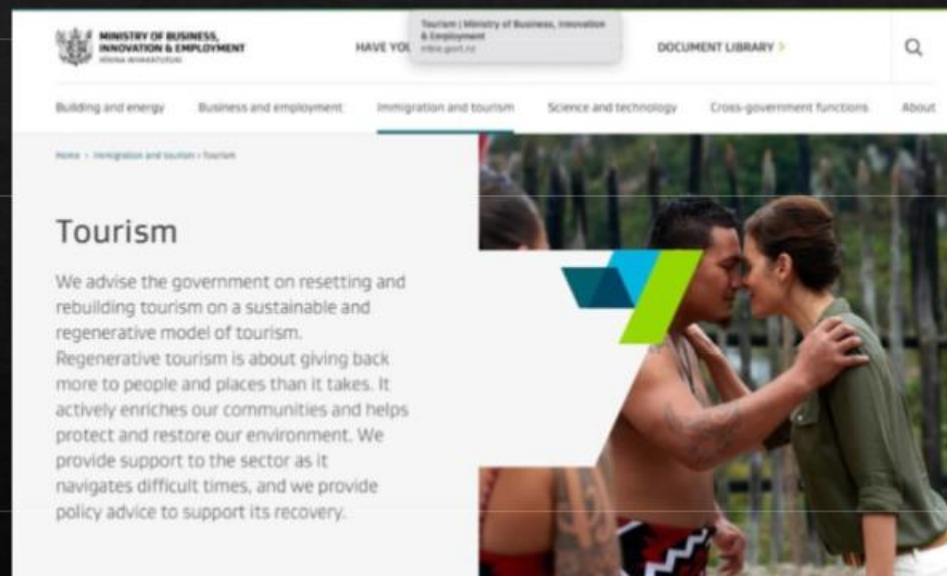
Can we learn from the others?
Or do we need to make the same mistakes again?

Prepared by: Sarah van der Burch

Current Situation:

- ◇ Since October, Lyttelton has been swamped by tourists off cruise ships
- ◇ Many members of the Lyttelton community have expressed concerns about the ships – via emails and Facebook.
- ◇ Until very recently there has been little visible response from our locally elected representatives. I would say we have had a leadership vacuum.
- ◇ I understand that there was representation at the Lyttelton Farmer's Market as a 'Meet and Greet', which I highly applaud
- ◇ Lyttelton Information Centre has been doing a good job providing information but it's not their role to make decisions for us – that is our job together
- ◇ Our Community is asking for a voice in the discussion about what is sustainable tourism

What MBIE says is our goal for tourism. Is this what we are experiencing with these ships?



So what is your role:

Local Government Act of 2002

Section 10: Sets out the purpose of Local Government:

10 Purpose of local government

- ◆ (1) The purpose of local government is—
 - ◆ (a) to enable democratic local decision-making and action **by**, and on behalf of, communities; and
 - ◆ (b) to promote the social, economic, environmental, and cultural well-being of communities in the present and for the future.

◆ **"By"** - the little word that changes everything

- ◆ It means that elected members don't just exist to make decisions and take action on behalf of their communities. It means they also exist to enable communities to make decisions and take action themselves.
- ◆ This is a big shift in thinking - and one that's easy to miss in everyday council activity. *

◆ * Peter McKintay of the [Local Government, Their Teeth and McKintay Douglas](#)

Consultation vs Engagement:

What's the difference between engagement and consultation?

CONSULTATION	ENGAGEMENT
One-off: Consultation is a one-off process for a specific project, policy or strategy	Ongoing: Engagement is an ongoing process
Top-down: The institution decides what to discuss and how	Equal: The institution and communities decide what to discuss and how
One-way: Communities speak to the institution	Two-way: Communities speak to the institution and to each other
Institution-focused: The focus is on what the institution needs to achieve its aims	Community-focused: The focus is on what communities need to achieve their aims
Does not build communities' capability: Consultation does not strengthen communities' capability to act	Builds community capability: Engagement leaves communities with extra capability to act
Competitive culture: Consultation puts the institution on defence and the community on offence	Collaborative culture: Engagement creates a collaborative culture of shared ownership
	

The right process...

- ◆ Develops long term engagement, ownership and 'buy-in' of the outcomes
- ◆ Moves decisions beyond 'squeaky wheel' syndrome
- ◆ Models an 'and' mindset over 'either/or'
- ◆ Supports a way forward beyond divisiveness and vitriol through measured conversation and engagement
- ◆ The scale of the decision required determines the appropriate process to be used

Considerations for you:

- ◇ What are the roles of Local Government and the Community in the decision-making process of larger issues?
- ◇ Where should the power lie between Local Government and the Community relative to decision-making?
- ◇ How might the outcomes of the decision-making process differ using 'consultation' vs 'engagement'?
- ◇ Will the Destination Management Plan (DMP), as it is currently being implemented, create the MBIE outcome of 'building tourism that gives back more than it takes'?

Way Forward on Cruise Ships and Sustainable Local Tourism – My Thoughts:

- ◆ Ensure the DMP process effectively reflects MBIE Purpose.
- ◆ We have a population of over 3,000 in Lyttelton and I don't know anyone who actually completed the on-line document other than myself. (I am hoping you all did) Who's voice are we hearing?
- ◆ Feels like the DMP is happening too fast. This is a big issue and the outcome will be with us for years
- ◆ We should be working together to achieve the best possible outcomes

Potential Options:

◆ Citizen Assembly:

Has worked very well in other countries with big, thorny issues

Builds engagement and can provide a very considered response to a complex questions

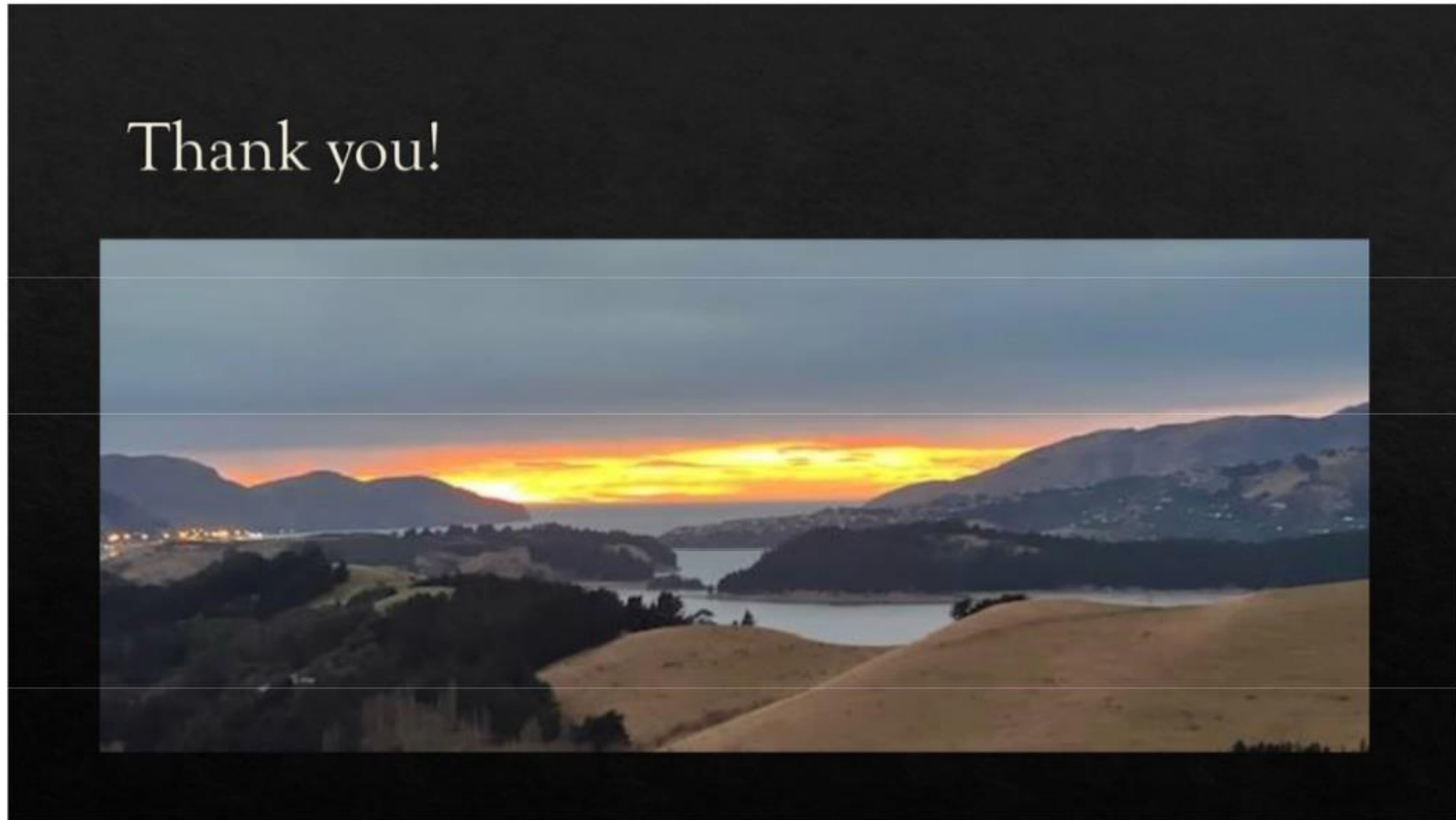
Quality of the Question is key: e.g. “What does sustainable tourism look like for Whakaraupo/Lyttelton/Banks Peninsula?” (depending on scope)

◆ Facilitated Community Conversations:

Lower cost; can be very effective; skill exists currently

Create a mindset of working together

Let people talk and listen to each other



Appendix

Item 12

Attachment D

The Economics of Cruise Ships- The Hustle

- ◆ Cruise lines will generally pay a small head tax (\$4-\$15 per passenger) to call on a port. According to Klein, these countries often spend more on maintaining facilities for cruise ships than they make through the fees.
- ◆ They might also promise a boost to the economies they frequent. But Klein says they work out deals with local vendors where they take up to 70% of the onshore revenue — and **studies** have **shown** that local populations in foreign ports don't get much out of such partnerships.
- ◆ The standard contract for a crew member like a cleaner or dishwasher requires a mandatory 308 hours per month — 11 hours a day, 7 days a week, for as long as 8-10 months, with no days off — for the equivalent of \$400-700 per month, or \$1.62 to \$2.27 per hour
- ◆ According to annual report filings, the major cruise lines pay an average tax rate of 0.8% — far below the 21% US corporate tax rate.
- ◆ Is this what we want? Does this align to our values as a nation?
- ◆ <https://thehustle.co/the-economics-of-cruise-ships/> May 2020

Cruise Ship Impact Presentation - by Sara Campbell

See google slides:

https://docs.google.com/presentation/d/1Uwl5i_2H0QahTy8jOJf-ndtgLOBGlnXys_ZeiButVNU/edit?usp=sharing

The Climate and Ecological Emergency

The last eight years have been the hottest on record.

2022 was the hottest year for the ocean.

NASA state "This upward trend will continue as long as we keep emitting greenhouse gases at our current rate."

"Our graphics only go up to 5 degrees above normal, but now that we're increasingly seeing even higher temperatures it may be time to change the scale. The warming is literally off the scale." - Metservice

"What we do over the next three to four years, I believe, is going to determine the future of humanity. We are in a very, very desperate situation." Sir David King who was chief scientific adviser to successive UK governments.

"The collapse of civilization and the natural world is on the horizon." - Sir David Attenborough

"Greenhouse gas emissions keep growing, global temperatures keep rising, and our planet is fast approaching tipping points that will make climate chaos irreversible," he adds. "We are on a highway to climate hell with our foot still on the accelerator,". Antonio Guterres UN Secretary General.

Our city and regional council both declared a climate and ecological emergency in 2019. Our government declared a climate emergency in 2022.

Environmental Impacts of Cruise Ships

A cruise produces 2 to 4 times more CO2 per passenger, per mile than a flying holiday that includes hotel stays. I've included a link to a paper of the most comprehensive research review

to date on the Environmental and human health impacts of cruise tourism. The review, finds that cruising is a major source of environmental pollution and degradation. In 2019 Cruise tourism accounted for about 9% of international visitor arrivals but only 3% of international tourist spending. I seriously question how determined our government bodies are to address this climate and ecological crisis when they still consider this High impact, low value form of tourism acceptable.

Overseas community impacts.

There are places overseas who after experiencing negative impacts on their environment and communities are enforcing restrictions. (NZ environmental regulations?). Restrictions include limiting the number of ships, the number of passengers the ship carries, banning them on weekends and banning them altogether. Introducing tougher environmental restrictions. Some have introduced significant taxing of cruise passengers.

The negative impacts referred are:

Pollution

Overcrowding

Heavy demand on public infrastructure - incl. Transport systems.

Too many souvenir shops and low-price-and-quality restaurants.

The disappearance of many local shops and activities, as well as artisans' shops and authentic traditions.

Feeling like Disneyland

Disrupting the serenity of the city.

Increasing conflict in the community.

'Cruise ship overtourism in Barcelona - Spain, Bruges - Spain, Dubrovnik - Croatia, Dublin - Ireland, Venice - Italy, French Polynesia Tahiti. Florida.

Personally I love this move by the Tahiti

Tahiti - The country's leaders are concerned that larger ships would not only tax local infrastructure, but also impact the experience for non-cruise visitors. Local officials on Bora Bora had requested the limits as early as 2019 to "preserve the beauty of its lagoon as well as the quality of service which has made it famous," according to a government release.

In November 2020, voters in the southern tip of Florida approved three ballot questions that would restrict the number of daily cruise ship visitors to 1,500, ban vessels carrying more than 1,300 passengers, and prioritize docking for cruise lines with the best health and environmental records...unfortunately this was overturned by the governor.

Akaroa Community Impacts

These quotes were made by Akaroa locals and found in a case study by the Environmental Defense Society funded by Environment Canterbury.

"This is the antithesis of slow tourism."

"Locals would have a schedule of cruise ship visits on their fridge door and if a ship was coming in they would not go into town."

"On a cruise ship day you can't get into the door of the library, as all the passengers go there for the free wifi, as it's too expensive on the ship."

"Several quality gift shops and galleries in Akaroa being replaced by souvenir shops."

"People say we have lost the personal New Zealand made quirky and arty gifts and that we have gone to little plastic dolls and tea towels. But that's what sells."


"There is no oversight of the tourism industry."

"If we got a smaller number of higher value, more discerning tourists to the Peninsula with an interest in the environment, culture and heritage, you would probably get the same if not better economic outcomes, without the more negative effects on the environment and community."

"Some people benefit, while others have little say and feel imposed upon."

Lyttelton Community Impacts

I asked around 40 Lyttelton businesses to fill in a survey.

( Cruise Ships.xlsx)

I asked the following questions:

1a. Cruise ships have a positive impact on my business.

2a. I believe cruise ships visiting Lyttelton have a positive impact on Lyttelton residents and non-cruise ship visitors.

3a. Cruise ships have a high negative environmental impact, for example cruise ships emit 2 to 4 times more carbon dioxide per passenger per kilometre than a passenger jet (more information on this and other relevant pollution here:

<https://www.rnz.co.nz/news/on-the-inside/473378/cruise-ships-back-in-nz-waters-should-we-really-be-welcoming-them>).

Considering the high negative impact on the environment, I support the government introducing legislation to prohibit cruise ships from entering New Zealand waters.

I found it heartwarming that some of those that say they are benefiting financially have a greater priority for a healthy community and environment.

Obviously this is not a thorough survey but it does challenge the narrative that cruise ships are beneficial to local businesses and it also challenges the narrative that benefiting financially from cruise ships is a priority.

Because the harbour coop has many owners instead of filling in the survey, some of the staff discussed their experience and Heather sent me an email.

The general consensus echos what I know some other businesses in Lyttelton (and in Akaroa back when they were getting boats in) feel- that when a cruise is in, the town tends to be very full of the passengers and we spend the day busy answering a lot of questions etc, but at the end of the day the total takings are not much higher (or no different at all) than a regular day.

We've also noticed we see a lot less of our regulars in the store and less locals on the street when there's a cruise in. It seems that locals may be avoiding coming down to town when they see a cruise in port. One lady told me she's even driven through the tunnel to do grocery shopping, as the crowded street gives her anxiety. Our regulars from the community are our main support, so this is worrying."

I'd like to finish with these two quotes:

"From the pile driving building the berth to the town being riddled with floaters. It's all money orientated. Money that the community doesn't benefit from. I work in local hospitality and am frequently being told that I must appreciate "all the extra business". We don't. We're busy enough without them. Business is fine. The floaters drive the locals away. ...Knowing what these floating malls do to our planet makes it hard for me to be polite. It's actually got to a point that I dread waking to another one in port. I've got the 10th of April circled in my calendar as a celebration day. The last cruise of the season. I'm sad and angry and powerless. I'm not the only one." - Popi Newbury a Lyttelton resident

"Cruise ship visitors are fine in themselves mostly. It's the quantity of visitors. It is overwhelming. The experience of going into the village, to the supermarket, to the pharmacy suddenly becomes very different. Locals don't want to come down and therefore other businesses (like some cafes for example as I have heard, anecdotally) find their regulars don't come as a result. The sheer scale of the influx in a condensed period means that the general atmosphere in Lyttelton is changed for when they are in port. A sleepy little town feels overrun and overwhelmed especially with the very large ships. This has a detrimental impact on how the town is perceived which has long reaching ripples. The tales of economic prosperity in the short term for some take precedence over the more intangible, harder to quantify 'feel' and atmosphere of this small town."

I also wonder, long term about the impact of the cruise ships, every summer on the kinds of businesses we have. Trinket shops selling Kiwiana? A starbucks? How will this impact on the 'feel' of Lyttelton. That 'feel' is important, it influences other visitor numbers, quality of life and more." - Coralie Winn - Winn Ceramics operating out of Ata Ceramics.

With 85 cruise ships this season and currently 98 booked for next. I ask you to please gather information, listen to experts many are saying we need to value slow tourism over fast tourism, listen to those in communities who have been in the situation that we find ourselves in now. Inform our community. Help us to hear each other and find a solution together. Make sure we are included in the decisions that impact us.

End of Presentation.

Articles relevant to the presentation

Cruise ship impact on environment:

<https://theicct.org/marine-cruising-flying-may22/>

<https://www.mz.co.nz/news/on-the-inside/473378/cruise-ships-back-in-nz-waters-should-we-really-be-welcoming-them>

<https://theconversation.com/without-stricter-conditions-nz-should-be-in-no-hurry-to-reopen-its-border-to-cruise-ships-181607?fbclid=IwAR2UpXsWwMMwhbRqpzvtqI6ZXshl508So3j4jfdIXKVBU36vPypX1Gq-t4I>

Article about the following study.

<https://www.sciencedaily.com/releases/2021/09/210928193815.htm>

'Many cruise ships still treat sewage with traditional Marine Sanitation Devices, which often do not perform as expected and contain significant amounts of fecal bacteria, heavy metals, and nutrients in excess of clean water quality standards (Caric et al., 2019; Loehr et al., 2006). Therefore, major cruise companies score poorly with regards to sewage treatment, with all 18 companies reviewed in the Cruise Ship Report Card (FOE, 2020) reporting a card score 'C' or lower (on a scale of F to A).'

https://drive.google.com/file/d/1_S7WwhUDcC05tzcKAXj0pMLDfaF6M0AC/view?usp=sharing

Carbon emissions from international cruise ship passengers' travel to and from New Zealand

https://drive.google.com/file/d/1bdv-EgGzQdXOTQJlhuOy_jP4qtlmESZ7/view?usp=drivesdk

NABU cruise ship environmental ratings- not good.

<https://en.nabu.de/news/2018/25037.html>

1 billion gallons of waste ?

<https://theconversation.com/time-to-rock-the-boat-cruise-ships-can-destroy-the-very-destination-s-they-sell-to-us-55245>

The tourism minister has repeatedly stated there will be [no return to the old ways](#) and that the country must make "structural change for regenerative tourism".

<https://www.beehive.govt.nz/speech/otago-university-tourism-policy-school-%E2%80%99Cstructural-change-regenerative-tourism%E2%80%99D>

Cruise ship impact on community

Cruise ship overtourism in Barcelona - Spain, Bruges - Spain, Dubrovnik - Croatia, Dublin - Ireland, Venice - Italy, French Polynesia Tahiti.

"It's getting like Disneyland",

Low Value, High Impact.

Quality Not Quantity.

"Too few spending money instead breaking the calm serenity of the city." stopped advertising that targets day trippers instead opting for slow tourism. Fast tourism is destroying the character of their city.

The shops became fixed on tourists and sell trinkets, chocolate and beer.

Dubrovnik restricted the number of cruise ships and the total number of passengers they can carry.

Dublin reduced cruise ships due to port capacity, chose not to expand due to public opposition.

Amsterdam enforced a day tourist tax on cruise travelers, which led to fewer cruise ships. This move was aimed at tackling the increase in day-trippers and to encourage travelers to invest more time in the Dutch city as well as deal with heavy demands by visitors on the city's public areas.

Barcelona's mayor Ada Colau is pushing regional authorities to restrict the number of cruise ships allowed in port, which would halve the number of cruise tourists during the peak summer season to 200,000 a month.

Santorini - Greece capped the number of cruise passengers the influx of cruise visitors was causing social and environmental problems including traffic issues, overcrowding, burden on infrastructure. Agitated locals.

Last week the mayor, Dirk De fauw, elected in October under the slogan "Go with De fauw", announced that the municipality would no longer advertise or promote day trips to the city. Measures would also be taken to cut back the number of cruise ships able to dock at nearby Zeebrugge from five a day to just two. Cruise companies will also be asked to dock during the week rather than at weekends to help spread the crowds.

<https://amp.theguardian.com/world/2019/jun/16/bruges-crackdown-tourist-numbers>
<https://www.ft.com/content/9f261daa-dabb-4549-82da-67d01026f099>

Now tensions that have simmered for decades are boiling over as the city's vanishing population of 55,000 fight back against the tourist tide.

Caberlotto, 25, represents a generation of Venetians being priced and crowded out of their city by tourists who come in search of history and bad pizza. They have had enough. The city's population is now shrinking by about 1,000 people a year as property prices and rents soar. Landlords are increasingly renting space via Airbnb.

<https://www.courthousenews.com/its-back-to-normal-in-venice-but-for-venetians-thats-also-a-gloomy-prospect/>

On the other hand, since Venice has experienced a sudden increase of cruise passengers, an overwhelming number of souvenirs shops and low-price-and-quality restaurants have opened, targeting day (or hour) trippers. This kind of business has contributed greatly to the increase of rents and the disappearance of many local shops and activities, as well as artisans' shops and authentic traditions.

<https://veneziaautentica.com/cruise-ships-in-venice-italy/>

<https://www.theguardian.com/world/shortcuts/2016/sep/27/dont-look-now-venice-tourists-locals-sick-of-you-cruise-liners>

In November 2020, voters in the southern tip of Florida approved three ballot questions that would restrict the number of daily cruise ship visitors to 1,500, ban vessels carrying more than

1,300 passengers, and prioritize docking for cruise lines with the best health and environmental records...it was overturned by the governor.

<https://cruiseradio.net/florida-governor-signs-bill-overturning-key-west-cruise-ship-restrictions/>

Tahiti - The country's leaders are concerned that larger ships would not only tax local infrastructure, but also impact the experience for non-cruise visitors. Local officials on Bora Bora had requested the limits as early as 2019 to "preserve the beauty of its lagoon as well as the quality of service which has made it famous," according to a government release.

The country's leaders are concerned that larger ships would not only tax local infrastructure, but also impact the experience for non-cruise visitors. Local officials on Bora Bora had requested the limits as early as 2019 to "preserve the beauty of its lagoon as well as the quality of service which has made it famous," according to a government release.

<https://www.cntraveler.com/story/as-more-ports-ban-mega-cruise-ships-what-is-the-future-of-the-largest-vessels/amp>

Akaroa

Resident Perceptions on Cruise Tourism in Akaroa As part of a qualitative study of the phenomenon of overtourism across New Zealand in February 2020, we interviewed residents in Akaroa. Their responses provided valuable insights into the problems with cruise ship visits in that small community, and a foundation for possible future strategies. Based on the interviews, we identified three main themes relating to problems with cruise ship visits: Pollution, crowding/congestion, and conflict within the community.

Tacky things in shops, buses everywhere, avoiding the township, overwhelming, stressful, community unable to socialize and relax together, some businesses doing well, others worse off, a once peaceful community divided.

https://drive.google.com/file/d/1NHsYsxN_88XKonyY5cqKulLd_LjeoVLI/view?usp=share_link

"This is the antithesis of slow tourism."

"Locals would have a schedule of cruise ship visits on their fridge door and if a ship was coming in they would not go into town."

"On a cruise ship day you can't get into the door of the library, as all the passengers go there for the free wifi, as it's too expensive on the ship."

"Several quality gift shops and galleries in Akaroa being replaced by souvenir shops."

"People say we have lost the personal New Zealand made quirky and arty gifts and that we have gone to little plastic dolls and tea towels. But that's what sells."

"There is no oversight of the tourism industry."

"If we got a smaller number of higher value, more discerning tourists to the Peninsula with an interest in the environment, culture and heritage, you would probably get the same if not better economic outcomes, without the more negative effects on the environment and community.

"Some people benefit, while others have little say and feel imposed upon." 'On whose terms' tourism is conducted emerges as a key question.

RESTORING TE PĀTAKA O RĀKAIHAUTŪ BANKS PENINSULA - A case study by EDS
(Environmental Defense Society funded by Environment.)

https://drive.google.com/file/d/1VZEcOOy647xN9kF9kBULdOZlXnU1MS6/view?usp=share_link

Regional Harbourmaster Jim Dilley said that the 2022/23 cruise ship season would allow the community to understand how a lower volume of cruise vessels affects the area. "The community can compare this season with previous years and decide if this represents a good balance," he said. Yes please. I'd like to see these residents survey

<https://www.ecan.govt.nz/get-involved/news-and-events/2022/getting-ready-for-the-return-of-cruise-ships-to-akaroa/>

<https://pce.parliament.nz/publications/not-100-but-four-steps-closer-to-sustainable-tourism>

Lyttelton

85 this season at least 98 next season

We should be encouraging tourists to travel less and spend longer in a destination.

Community members feeling unlistened to, railroaded and powerless.

"From the pile driving building the berth to the town being riddled with floaters. It's all money orientated. Money that the community doesn't benefit from. I work in local hospitality and am frequently being told that I must appreciate "all the extra business". We don't. We're busy enough without them. Business is fine. The floaters drive the locals away. ...Knowing what these floating malls do to our planet makes it hard for me to be polite. It's actually got to a point that I dread waking to another one in port. I've got the 10th of April circled in my calendar as a celebration day. The last cruise of the season. I'm sad and angry and powerless. I'm not the only one." - Popi Newbury

"Cruise ship visitors are fine in themselves mostly. It's the quantity of visitors. It is overwhelming. The experience of going into the village, to the supermarket, to the pharmacy suddenly becomes very different. Locals don't want to come down and therefore other businesses (like some cafes for example as I have heard, anecdotally) find their regulars don't come as a result. The sheer scale of

the influx in a condensed period means that the general atmosphere in Lyttelton is changed for when they are in port. A sleepy little town feels overrun and overwhelmed especially with the very large ships. This has a detrimental impact on how the town is perceived which has long reaching ripples. The tales of economic prosperity in the short term for some take precedence over the more intangible, harder to quantify 'feel' and atmosphere of this small town."

I also wonder, long term about the impact of the cruise ships, every summer on the kinds of businesses we have. Trinket shops selling Kiwiana? A starbucks? How will this impact on the 'feel' of Lyttelton. That 'feel' is important, it influences other visitor numbers, quality of life and more." - Coralie Winn

Unethical industry

The cruise industry is reluctant to engage with any criticism. And while perhaps it's unfair to suggest this is different to any other similarly-sized commercial entities, it is irrefutable that cruise lines are able to generate huge profits because they are incorporated in tax havens such as Bermuda, Liberia and Panama. These open shipping registries, commonly known as [flags of convenience](#), means minimal regulation to comply with in terms of labour costs, environmental regulations and safety standards.

While legal and applicable to all shipping, cruise lines rely heavily on their workforce to satisfy their passengers' high service expectations. That these same companies take any opportunity to avoid any legislation that would offer these workers wage protection and job security is just one of a long line of criticisms the industry is seemingly reluctant to acknowledge, let alone address. In a world that since the [Panama Papers](#) is increasingly aware of such issues, the industry cannot afford to ignore it much longer.
<https://theconversation.com/cruise-lines-promise-big-payouts-but-the-tourist-money-stays-at-sea-66350>

"Cruise lines want to register somewhere where they pay no taxes, are exempt from labor and wage statutes, and don't have to follow health and safety codes," says Jim Walker, a Miami-based maritime lawyer. "They're looking for a place that will leave them alone, not oversee their operations."

For the most part, that's what cruise companies have gotten: According to annual report filings, the major cruise lines pay an average tax rate of 0.8% — for below the 21% US corporate tax rate.

<https://thehustle.co/the-economics-of-cruise-ships/#:~:text=After%20subtracting%20overhead%20costs%2C%20a,during%20one%207%2Dday%20excursion.>

Economy

Cruise tourism accounts for about 9% of international visitor arrivals (about 350,000 cruise passengers and crew) but only 3% of international tourist expenditure in New Zealand.

Domestic tourism accounted for 58% of total tourism spending

https://www.nzier.org.nz/hubfs/nzier_insight_87_-_tourism_beyond_covid-19.pdf

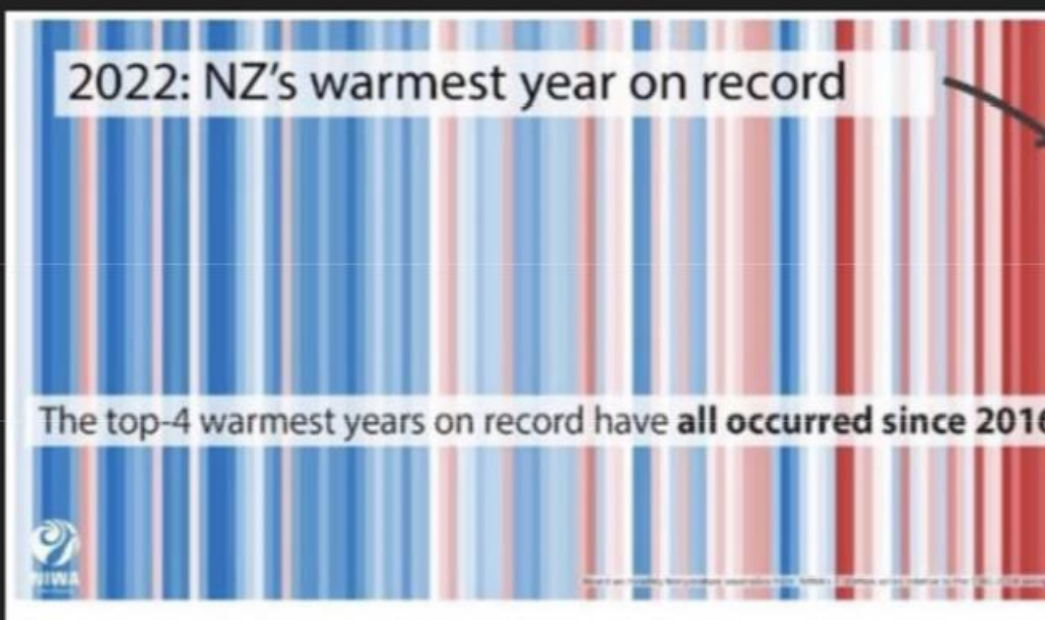
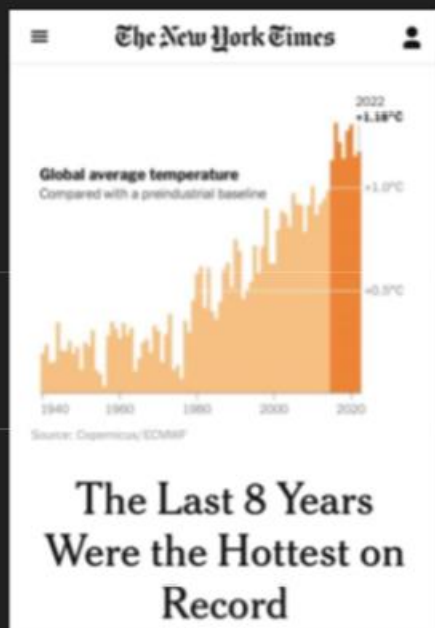
Cruise Ships - Environmental and Social Impacts

Presentation by Sara Campbell (a Lyttelton local)

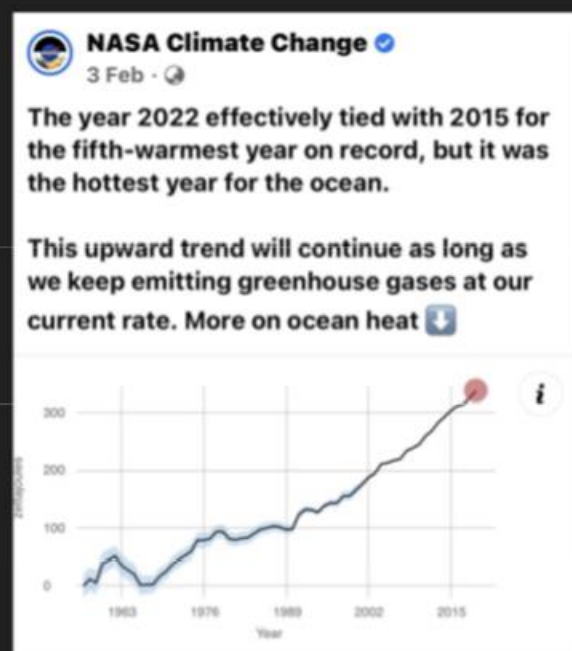
Item 12

Attachment D

The Climate and Ecological Emergency



The Climate and Ecological Emergency



Lyttelton Business Survey

Business name.
= (14 Responses)

- Nama sushi
- Alr, Sea and Land gallery
- SUPER
- London St Books
- Henry Trading
- Leslie's Bookshop
- Lyttelton Pharmacy
- Eruption Brewing
- Winn Ceramics operating out of Ata Ceramics
- Arbour Bar ltd
- Lyttelton Coffee Co Ltd
- Hope River Pies
- Lyttelton SuperValue
- London Fish&Chips

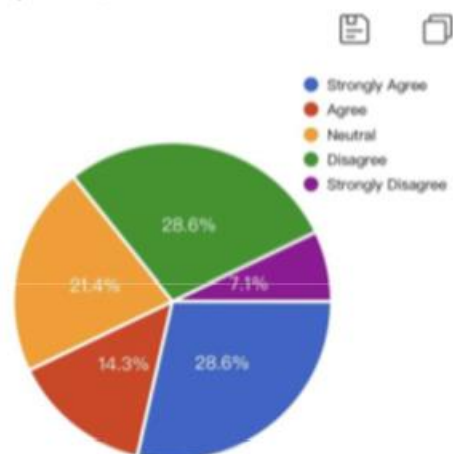
Your name.
= (14 Responses)

- Gihan shin
- Malcolm Carne
- Sahni
- Deborah Clark
- MAREE HENRY
- Paul Leslie
- John Thrupp
- Steve Leftly
- Coralie Winn
- Megan Hancox
- Stephen Mateer
- Craog Minehan
- Rob De Thier
- Wendy Wu

Lyttelton Business Survey

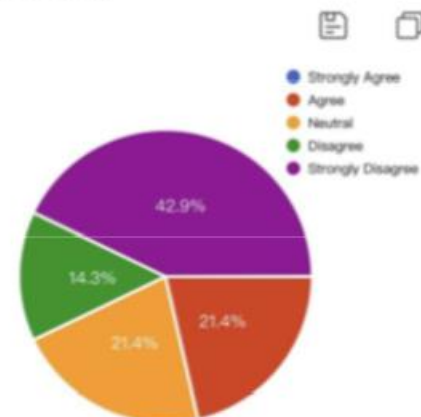
1a. Cruise ships have a positive impact on my business.

● (14 Responses)



2a. I believe cruise ships visiting Lyttelton have a positive impact on Lyttelton residents and non-cruise ship visitors.

● (14 Responses)

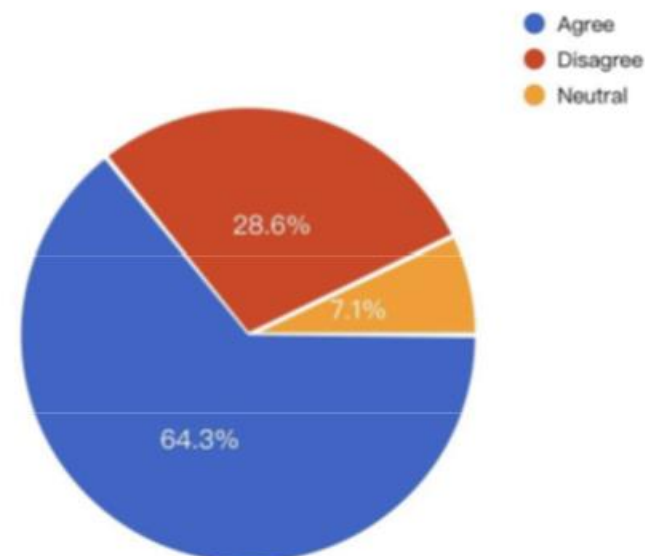


Lyttelton Business Survey

3a. Cruise ships have a high negative environmental impact, for example cruise ships emit 2 to 4 times more carbon dioxide per passenger per kilometre than a passenger jet (more information on this and other relevant pollution here: <https://www.rnz.co.nz/news/on-the-inside/473378/cruise-ships-back-in-nz-waters-should-we-really-be-welcoming-them>).

Considering the high negative impact on the environment, I support the government introducing legislation to prohibit cruise ships from entering New Zealand waters.

● (14 Responses)





2 February at 11:08 · 🌐

Avoiding a the Bus stop block - use the wharf stop - only a few Diamond Harbour people down there.



Page 31

bit of a vent and a warning to catch an earlier or later bus while the ship is in 😊
8.40am bus this morning after the cruise ship has come in, there's just as many still waiting
outside on the stop. Didn't leave Lyttelton till 9am and we just had to drive past and elderly lady
in Opawa and an older man near Colombo street as the bus is too full 😊 I catch this bus most
mornings and a lot of ppl catch it to go to work and school.
I understand it has positives but I wish metro had organised something. I've emailed them but n
very hopeful...

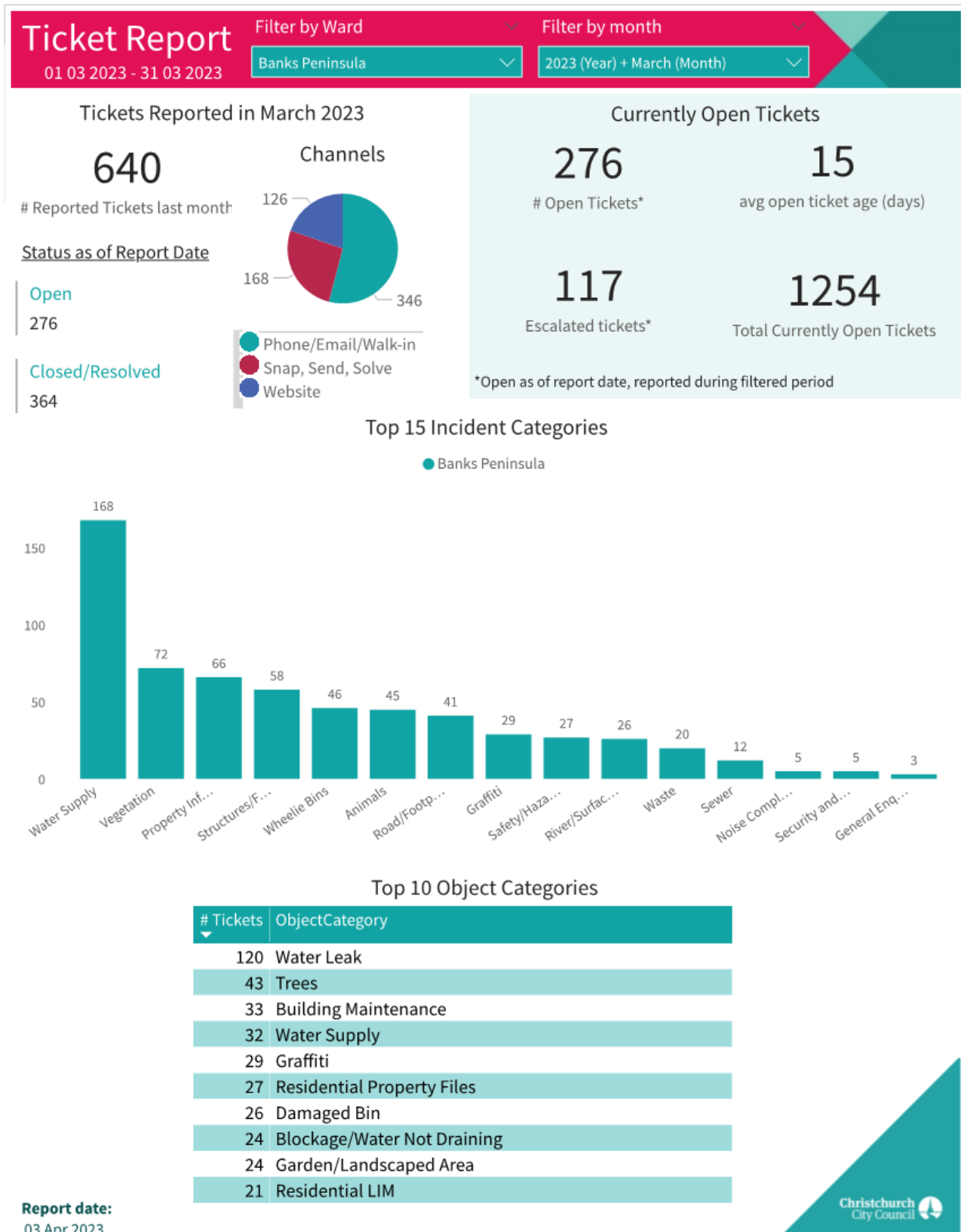


This is the deal now at the bus exchange. You queue up and wait for the Lyttelton bus behind these fences, which cost \$3,000 to install and \$1,500, per day.

Today I waited in line for an hour and I said that I was a local, but was told that the cruise ship company have complained of discrimination. Now locals are no longer allowed to have priority to board the bus.



Trim:



13. Elected Members' Information Exchange Te Whakawhiti Whakaaro o Te Kāhui Amorangi

This item provides an opportunity for Board Members to update each other on recent events and/or issues of relevance and interest to the Board.

Karakia Whakamutunga

Unuhia, unuhia Unuhia ki te uru tapu nui Kia wātea, kia mā mā, te ngākau, Te tinana te wairua i te ara takatā Koia rā e Rongo, whakairia ake ki runga Kia tina! TINA! Hui e! TĀIKI E!	<i>Draw on, draw on, Draw on the supreme sacredness To clear, to free the heart, the body and the spirit of mankind Rongo, suspended high above us (i.e. in 'heaven') Draw together! Affirm!</i>
--	--