



Christchurch City Council AGENDA

Notice of Meeting:

An ordinary meeting of the Christchurch City Council will be held on:

Date: Wednesday 15 February 2023
Time: 9.30am
Venue: Council Chambers, Civic Offices,
53 Hereford Street, Christchurch

Membership

Chairperson	Mayor Phil Mauger
Deputy Chairperson	Deputy Mayor Pauline Cotter
Members	Councillor Kelly Barber
	Councillor Melanie Coker
	Councillor Celeste Donovan
	Councillor Tyrone Fields
	Councillor James Gough
	Councillor Tyla Harrison-Hunt
	Councillor Victoria Henstock
	Councillor Yani Johanson
	Councillor Aaron Keown
	Councillor Sam MacDonald
	Councillor Jake McLellan
	Councillor Andrei Moore
	Councillor Mark Peters
	Councillor Tim Scandrett
	Councillor Sara Templeton

9 February 2023

Principal Advisor

Dawn Baxendale
Chief Executive
Tel: 941 8999

Samantha Kelly

Team Leader Hearings & Committee Support
941 6227

samantha.kelly@ccc.govt.nz

www.ccc.govt.nz

Note: The reports contained within this agenda are for consideration and should not be construed as Council policy unless and until adopted. If you require further information relating to any reports, please contact the person named on the report.

To watch the meeting live, or a recording after the meeting date, go to:

<http://councillive.ccc.govt.nz/live-stream>

To view copies of Agendas and Minutes, go to:

<https://www.ccc.govt.nz/the-council/meetings-agendas-and-minutes/>





Developing Resilience in the 21st Century

Strategic Framework

Whiria ngā whenu o ngā papa,
honoa ki te maurua tāuiki

Bind together the strands of each mat and join
together with the seams of respect and reciprocity

Ōtautahi-Christchurch is a city of opportunity for all

Open to new ideas, new people and new ways of doing things – a city where anything is possible

Principles

Being open,
transparent and
democratically
accountable

Promoting
equity, valuing
diversity and
fostering inclusion

Taking an inter-generational approach
to sustainable development,
prioritising the social, economic
and cultural wellbeing of
people and communities
and the quality of the
environment, now
and into the
future

Building on the
relationship with
Te Rūnanga o Ngāi Tahu
and the Te Hononga-Council
Papatipu Rūnanga partnership,
reflecting mutual understanding
and respect

Ensuring
the diversity
and interests of
our communities
across the city and the
district are reflected in
decision-making

Actively collaborating and
co-operating with other
local, regional
and national
organisations

Community Outcomes

Resilient communities

Strong sense of community
Active participation in civic life
Safe and healthy communities
Celebration of our identity
through arts, culture, heritage,
sport and recreation
Valuing the voices of all cultures
and ages (including children)

Liveable city

Vibrant and thriving city centre
Sustainable suburban and
rural centres
A well connected and accessible
city promoting active and
public transport
Sufficient supply of, and
access to, a range of housing
21st century garden city
we are proud to live in

Healthy environment

Healthy water bodies
High quality drinking water
Unique landscapes and
indigenous biodiversity are
valued and stewardship
exercised
Sustainable use of resources
and minimising waste

Prosperous economy

Great place for people, business
and investment
An inclusive, equitable economy
with broad-based prosperity
for all
A productive, adaptive and
resilient economic base
Modern and robust city
infrastructure and community
facilities

Strategic Priorities

Enabling active
and connected
communities
to own their future

Meeting the challenge
of climate change
through every means
available

Ensuring a high quality
drinking water supply
that is safe and
sustainable

Accelerating the
momentum
the city needs

Ensuring rates are
affordable and
sustainable

Ensuring we get core business done while delivering on our Strategic Priorities and achieving our Community Outcomes

Engagement with
the community and
partners

Strategies, Plans and
Partnerships

Long Term Plan
and Annual Plan

Our service delivery
approach

Monitoring and
reporting on our
progress

TABLE OF CONTENTS

Karakia Tīmatanga	4
External Recognition for Council Services	4
1. Apologies Ngā Whakapāha	4
2. Declarations of Interest Ngā Whakapuaki Aronga	4
3. Public Participation Te Huinga Tūmatanui	4
3.1 Public Forum Te Huinga Whānui	4
3.2 Deputations by Appointment Ngā Huinga Whakaritenga	5
4. Presentation of Petitions Ngā Pākikitanga	5

STAFF REPORTS

5. Draft submission on Inquiry into the 2022 Local Elections	7
6. Draft submissions on Water Services Reform Bills	11
7. Rate Remissions: City Vacant Differential Rating	17
8. Central City Biannual Report: July to December 2022	27
9. Biodiversity Fund applications to protect and enhance indigenous biodiversity on private land	41
10. Triennial Agreement between Local Authorities in the Canterbury Region	71
11. Mayor's Monthly Report - January 2023	83

Karakia Whakamutunga

Karakia Tīmatanga

Whakataka Te hau ki Te uru

Whakataka Te hau ki Te tonga

Kia makinakina ki uta

Kia mataratara ki Tai

E hi ake ana te atakura

He tio, he huka, he hau hu

Tihei Mauri Ora

External Recognition for Council Services

The Mayor, on behalf of the Council, will acknowledge the following external awards for Council services:

- The Council's Christchurch Art Gallery publication of *Te Puna Waiora: The Distinguished Weavers of Te Kāhui Whiritoi* won Best Medium Exhibition Catalogue and Best Art Writing by Aotearoa Māori or Pasifika at the Art Association of Australia and New Zealand Art Writing and Publishing Awards.

1. Apologies Ngā Whakapāha

At the close of the agenda no apologies had been received.

2. Declarations of Interest Ngā Whakapuaki Aronga

Members are reminded of the need to be vigilant and to stand aside from decision making when a conflict arises between their role as an elected representative and any private or other external interest they might have.

3. Public Participation Te Huinga Tūmatanui

3.1 Public Forum Te Huinga Whānui

A period of up to 30 minutes is available for people to speak for up to five minutes on any issue that is not the subject of a separate hearings process.

3.1.1 Jo Davidson

Jo Davidson will speak regarding excess water charges.

3.1.2 Co-signatories of the 'Informed Leaders - Tarras Airport Letter' dated 24 January 2023

Professors James Higham, Ilan Noy and Bronwyn Hayward will speak regarding the 'Informed Leaders - Tarras Airport Letter' dated 24 January 2023.

The letter is available at the following link:

<https://informedleaders.com/tarras-letter-jan-2023/>

3.2 Deputations by Appointment Ngā Huinga Whakaritenga

Deputations may be heard on a matter or matters covered by a report on this agenda and approved by the Chairperson.

There were no deputations by appointment at the time the agenda was prepared.

4. Presentation of Petitions Ngā Pākikitanga

There were no Presentation of Petitions at the time the agenda was prepared.

5. Draft submission on Inquiry into the 2022 Local Elections

Reference / Te Tohutoro: 23/83176

Report of / Te Pou
Matua:

Jo Daly, Electoral Officer (jo.daly@ccc.govt.nz)

General Manager /
Pouwhakarae:

Lynn McClelland, Assistant Chief Executive Strategic Policy and
Performance (lynn.mcclelland@ccc.govt.nz)

1. Nature of Decision or Issue and Report Origin

- 1.1 The Council will be asked to consider the draft submission on the Inquiry into Local Elections. Submissions are due Tuesday 14 February 2023 but Council staff have arranged for the final submission to be provided to the Justice Committee by 9am Thursday 16 February 2023
- 1.2 The Justice Committee are calling for submissions on their inquiry into last year's local election. The terms of reference for the inquiry include low voter turnout, provision of election services by private organisations and the age of eligible voters. Following each triennial election the Justice Committee reviews the law and administration procedures surrounding the conduct of elections conducted under the Local Electoral Act 2001 and the Local Electoral Regulations 2001.
- 1.3 The decision in this report is of low significance in relation to the Christchurch City Council's Significance and Engagement Policy. This recognises that while there may be significant community interest in the inquiry into last year's local election, the specific decision (to approve the Council submission) is of a low level of significance.

2. Officer Recommendations Ngā Tūtohu

That the Council:

1. Delegate to the Mayor to approve the final Council submission on the Inquiry into the 2022 Local Elections (**Attachment A Under Separate Cover**).

3. Reason for Report Recommendations Ngā Take mō te Whakatau

- 3.1 The Justice Committee is looking into issues arising from the last year's local elections, and has initiated this inquiry. The Council regularly makes submissions on proposals which may significantly impact Christchurch residents or Council business.

4. Alternative Options Considered Ētahi atu Kōwhiringa

- 4.1 The alternative option to the recommendation outlined above is for the Council to not make a submission in this case. This is not the preferred option as it is important for the Council to advocate on issues that affect the Christchurch community, Council business and our strategic priorities.

5. Detail Te Whakamahuki

- 5.1 Following each triennial election the Justice Committee holds an inquiry into the conduct of the elections. The Committee has therefore initiated the [Inquiry into the 2022 Local Elections](#). The Committee will examine the law and administrative procedures for the conduct of the 2022 local elections.

- 5.2 The terms of reference for the inquiry are:
- 5.2.1 *Low voter turnout*
- 5.2.2 *The provision of election services by private organisations, with particular reference to:*
- *Special voting*
 - *Provision of ballot papers*
 - *Complaint processes*
 - *Accountability for local elections*
 - *Postal voting (including security of ballots and whether postal voting is an effective method of receiving votes)*
- 5.2.3 *The age of eligible voters (with reference to lowering the age of eligible voters to 16 years).*
- 5.3 The inquiry was initiated on Thursday 8 December 2022 and more information on the inquiry can be found at https://www.parliament.nz/en/pb/sc/make-a-submission/document/53SCJU_SCF_INQ_130198/inquiry-into-the-2022-local-elections
- 5.4 Submissions are due Tuesday 14 February 2023. Council staff have arranged to provide this submission before 9am Thursday 16 February, to allow the Mayor and Councillors to consider the Council's the response at the Council meeting on 15 February 2023.
- 5.5 The decision affects all wards/Community Board areas.

6. Policy Framework Implications Ngā Hīraunga ā- Kaupapa here

Strategic Alignment Te Rautaki Tīaroaro

- 6.1 This decision aligns with the Council's Strategic Framework, particularly the community outcome: *active participation in civic life*.
- 6.2 This report supports the [Council's Long Term Plan \(2021 - 2031\)](#):
- 6.2.1 Activity: Governance and decision-making
- Level of Service: 4.1.2.3 Provide a triennial local government election (October 2022) - 100% of year 2 milestones achieved,

Policy Consistency Te Whai Kaupapa here

- 6.3 The decision is consistent with Council's Plans and Policies.

Impact on Mana Whenua Ngā Whai Take Mana Whenua

- 6.4 The decision does not a significant decision in relation to ancestral land or a body of water or other elements of intrinsic value, therefore this decision does specifically impact Mana Whenua, their culture and traditions.
- 6.5 The decision does not involve a matter of interest to Mana Whenua and will not impact on our agreed partnership priorities with Ngā Papatipu Rūnanga.
- 6.6 The opportunity to make submissions to the Inquiry is open to all persons.

Climate Change Impact Considerations Ngā Whai Whakaaro mā te Āhuarangi

- 6.7 There are no direct climate change implications associated with making a submission on the Inquiry.

Accessibility Considerations Ngā Whai Whakaaro mā te Hunga Hauā

- 6.8 There are no direct accessibility implications associated with making a submission on the Inquiry.

7. Resource Implications Ngā Hīraunga Rauemi

Capex/Opex Ngā Utu Whakahaere

- 7.1 Cost to Implement - The cost of preparing a submission is met from existing budgets.
- 7.2 Maintenance/Ongoing costs - There will be no ongoing costs associated with making this submission.
- 7.3 Funding Source - Existing operational budgets.

8. Legal Implications Ngā Hīraunga ā-Ture

Statutory power to undertake proposals in the report Te Manatū Whakahaere Kaupapa

- 8.1 The consultation on this Inquiry is open to the public and any legal person can make a submission to the Justice Select Committee.

Other Legal Implications Ētahi atu Hīraunga-ā-Ture

- 8.2 There is no legal context, issue or implication relevant to the decision to approve this submission.

9. Risk Management Implications Ngā Hīraunga Tūraru

- 9.1 There are no significant risks associated with this decision.

Attachments Ngā Tāpirihanga

No.	Title	Reference	Page
A	Draft Submission to the Inquiry into the 2022 Local Elections (Under Separate Cover)		

In addition to the attached documents, the following background information is available:

Document Name – Location / File Link

Confirmation of Statutory Compliance Te Whakatūturutanga ā-Ture

Compliance with Statutory Decision-making Requirements (ss 76 - 81 Local Government Act 2002).

(a) This report contains:

- (i) sufficient information about all reasonably practicable options identified and assessed in terms of their advantages and disadvantages; and
- (ii) adequate consideration of the views and preferences of affected and interested persons bearing in mind any proposed or previous community engagement.

(b) The information reflects the level of significance of the matters covered by the report, as determined in accordance with the Council's significance and engagement policy.

Signatories Ngā Kaiwaitohu

Authors	Jo Daly - Director, Independent Hearings Panel Ellen Cavanagh - Senior Policy Analyst
Approved By	Helen White - Head of Legal & Democratic Services Lynn McClelland - Assistant Chief Executive Strategic Policy and Performance

6. Draft submissions on Water Services Reform Bills

Reference / Te Tohutoro: 22/1359378

Report of / Te Pou Matua:	Diane Shelander, Senior Advisor Climate Resilience (diane.shelander@ccc.govt.nz)
General Manager / Pouwhakarae:	Sara Hames, Principal Advisor Policy (sara.hames@ccc.govt.nz)
	Lynn McClelland, Assistant Chief Executive Strategic Policy and Performance (lynn.mcclelland@ccc.govt.nz)

1. Nature of Decision or Issue and Report Origin

- 1.1 Staff have drafted Council submissions on the Water Services Legislation (WSL) Bill and Water Services Economic Efficiency and Consumer Protection (WEECP) Bill. The Council will be asked to approve both submissions to allow them to be submitted to the Select Committee on or before the Friday 17 February 2023 deadline.
- 1.2 The WSL and WEECP Bills are the second and third pieces of legislation in the Government's reform of three water services.
- 1.3 The Council [submitted](#) on the first piece of water services legislation, the Water Services Entities Act 2022, in July 2022.
- 1.4 The decisions in this report are of low significance in relation to the Christchurch City Council's Significance and Engagement Policy. This recognises that while there may be significant community interest in these proposals, the specific decision (to approve the Council submissions) is of a lower level of significance.

2. Officer Recommendations / Ngā Tūtohu

That the Council:

1. Approve the submission on the Water Services Legislation Bill (**Attachment A** under separate cover), to be submitted to the Select Committee by Friday 17 February 2023.
2. Approve the submission on the Water Services Economic Efficiency and Consumer Protection Bill (**Attachment B** under separate cover), to be submitted to the Select Committee by Friday 17 February 2023.

3. Reason for Report Recommendations / Ngā Take mō te Whakatau

- 3.1 The Council regularly makes submissions on proposals which may significantly impact Christchurch residents or Council business. Making submissions is an important way to influence national policies and legislation development.
- 3.2 Submitting on these Bills gives Council an opportunity to provide constructive feedback to the Select Committee to ensure that Christchurch city obtains the best outcomes possible in light of the Government's three waters reform programme.

4. Alternative Options Considered / Ētahi atu Kōwhiringa

- 4.1 The alternative option to the recommendation outlined above is for the Council to not make a submission on these proposals. This is not the preferred option as it is important for the

Council to advocate on issues that affect the Christchurch community, Council business and our strategic priorities.

5. Detail / Te Whakamahuki

Three waters reform programme

- 5.1 The Government initiated the Three Waters Reform programme in mid-2020. The key element in the programme is the proposal to establish four entities to assume the responsibility for delivering drinking water, wastewater and stormwater services in New Zealand.
- 5.2 The first piece of legislation for the creation of the four entities was the Water Services Entities Act 2022. The Council submitted on the legislation on 21 July 2022.
- 5.3 The Water Services Entities Act 2022 received royal assent on Wednesday 14 December 2022. The Act:
 - established four water services entities (WSEs)
 - described the geographical extent of each WSE
 - described the overall structure and governance of WSEs, as well as providing for general transitional arrangements.
- 5.4 **Attachment C** shows the service areas for each of the four WSEs, as described in the Water Services Entities Act 2022.

New water reform legislation was introduced late 2022

- 5.5 Both the WSL and WSEECB Bills were introduced in Parliament on Thursday 8 December 2022 and had their first readings on Wednesday 14 December 2022.
- 5.6 Public consultation for both Bills will close Sunday 12 February 2023. The consultation period for local government closes Friday 17 February 2023.
- 5.7 The Government has previously indicated that it intends to have fully enacted this legislative programme before the 2023 general election.

Water Services Legislation Bill

- 5.8 The WSL is the second piece of legislation relating to the provision of water services (water supply, wastewater and stormwater).
- 5.9 The WSL Bill is a highly complex piece of legislation covering a variety of matters. It makes a number of amendments to the Water Services Entities Act 2022, and other Acts including the Local Government Act 2002, Water Services Act 2021, Health Act 1956 and Climate Change Response Act 2022.
- 5.10 This Bill is intended to establish and empower WSEs by setting out their functions, powers, obligations, and oversight arrangements, including:
 - implementation arrangements for the WSEs, including provisions relating to the transfer of assets, liabilities, and other matters from local authorities to the new entities;
 - service delivery functions and powers, to enable WSEs to deliver water services in place of local authorities;
 - regulatory functions and powers, to enable WSEs to make rules, plans, and other instruments relating to water services, and engage in compliance and enforcement activities;
 - pricing and charging arrangements for water services;

- changes to Treaty settlement legislation that are required to ensure that settlement obligations are carried forward from territorial authorities to the WSEs;
 - changes to legislation relating to regulation and service delivery of water services.
- 5.11 The draft submission (**Attachment A**) includes the following key submission points:
- We are disappointed with the timeframes provided for submissions, and the lack of meaningful consultation that has been undertaken throughout the reform process.
 - The transfer of stormwater and flood management assets and services remains very unclear and we continue to oppose the transfer of stormwater management.
 - There remains a lack of public accountability in the governance structure.
 - There are many oversights in this Bill that could lead to a loss of public amenity and services.
 - We continue to express concern at the lack of alignment in the Government programme of reform.
 - There are potential implications for the Council in collecting water services entity's charges that have not been considered.
 - The flow on implications to the Councils operating practices and procedures have not been sufficiently acknowledged.
- 5.12 There are also a number of technical errors or inconsistencies within the Bill that we have raised.

Water Services Economic Efficiency and Consumer Protection Bill

- 5.13 The WSEEC Bill introduces the economic regulation and consumer protection measures for three waters.
- 5.14 The Bill appoints the Commerce Commission as the economic and consumer protection regulator for the four new WSEs. The Commission will:
- 5.14.1 obtain and publish information about the WSEs so that the public has accurate information on how their supplier is performing;
 - 5.14.2 set performance requirements and quality standards for the WSEs;
 - 5.14.3 apply price-quality regulation to ensure money is used efficiently and prices are reasonable;
 - 5.14.4 set and enforce minimum service level codes.
- 5.15 A Water Services Commissioner will also be established within the Commission to reflect the unique nature of the water sector and the importance of Te Mana o te Wai.
- 5.16 The draft submission (**Attachment B**) includes the following key submission points:
- We are disappointed with the timeframes provided for submissions, and the lack of meaningful consultation that has been undertaken throughout the reform process.
 - The need to ensure that water services are delivered efficiently and fairly for our community.
 - Our opinion is that information disclosure is the most important step to regulating the entities effectively.
 - There is a need to ensure alignment of standards and regulations.

- We stress the need to sufficiently engage and consult with communities throughout the creation of the regimes.
- Technical feedback to address ambiguity in the Bill.

6. Policy Framework Implications Ngā Hīraunga ā- Kaupapa here

Strategic Alignment /Te Rautaki Tīaroaro

6.1 This report supports the [Council's Long Term Plan \(2021 - 2031\)](#):

6.1.1 Activity: Strategic Planning, Future Development and Regeneration

- Level of Service: 17.0.1.1 Advice to Council on high priority policy and planning issues that affect the City. Advice is aligned with and delivers on the governance expectations as evidenced through the Council Strategic Framework. - Triennial reconfirmation of the strategic framework or as required.

Policy Consistency / Te Whai Kaupapa here

6.2 The decision is consistent with Council's Plans and Policies.

Impact on Mana Whenua Ngā Whai Take Mana Whenua

- 6.3 The WSL Bill provides for mana whenua representation on each WSE's Regional Group. As with the Water Services Entities Act 2022, this Bill also required the WSEs to give effect to Te Tiriti o Waitangi and to the principle of Te Mana o Te Wai.
- 6.4 The Council has engaged with Te Rūnanga o Ngāi Tahu on the Government's three waters reform programme and remains committed to ongoing partnership and engagement with mana whenua.

Climate Change Impact Considerations / Ngā Whai Whakaaro mā te Āhuarangi

6.5 There are no climate changes impact considerations in relation to the decision to submit, or not to submit, on either Bill.

Accessibility Considerations / Ngā Whai Whakaaro mā te Hunga Hauā

6.6 The decision to approve the submission on the either Bill does not have direct accessibility impacts.

7. Resource Implications Ngā Hīraunga Rauemi

Capex/Opex / Ngā Utu Whakahaere

- 7.1 Cost to Implement - The cost of preparing these submissions has been met within existing budgets.
- 7.2 Maintenance/Ongoing costs – There will be no ongoing costs associated with making these submissions. If the Council wishes to be heard at a Select Committee hearing this will require staff time, the cost of which will be met from existing budgets.
- 7.3 Funding Source – Existing operational budgets.

8. Legal Implications Ngā Hīraunga ā-Ture

Statutory power to undertake proposals in the report / Te Manatū Whakahaere Kaupapa

8.1 Consultation on these Bills is open to the public and any legal person can make a submission to the Finance and Expenditure Select Committee.

Other Legal Implications / Ētahi atu Hīraunga-ā-Ture

8.2 There are no legal implications to the decision to submit, or to not submit, on either Bill.

9. Risk Management Implications Ngā Hīraunga Tūraru

9.1 There are no risks identified with making these submissions.

Attachments / Ngā Tāpirihanga

No.	Title	Reference	Page
A	Draft submission on Water Services Legislation Bill (<i>Under Separate Cover</i>)		
B	Draft submission Water Services Economic Efficiency and Consumer Protection Bill (<i>Under Separate Cover</i>)		
C ↓	Map of Water Services Entities service areas	22/1376771	16

In addition to the attached documents, the following background information is available:

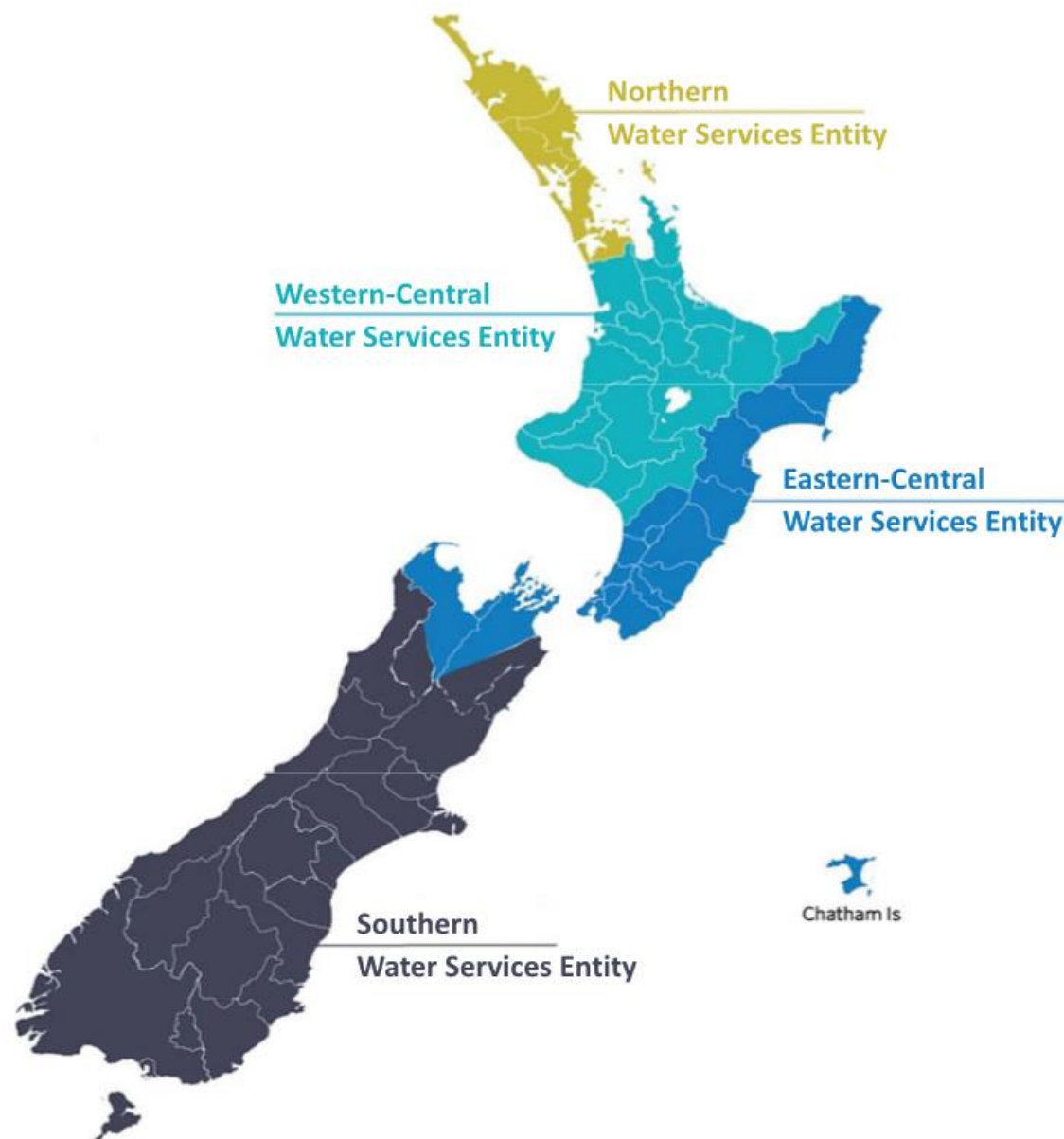
Document Name – Location / File Link
Water Services Legislation Bill – https://www.parliament.nz/en/pb/bills-and-laws/bills-proposed-laws/document/BILL_130199/water-services-legislation-bill
Water Services Economic Efficiency and Consumer Protection Bill – https://www.parliament.nz/en/pb/bills-and-laws/bills-proposed-laws/document/BILL_130196/water-services-economic-efficiency-and-consumer-protection
Three Waters Reform Programme – https://www.dia.govt.nz/Three-Waters-Reform-Programme

Confirmation of Statutory Compliance / Te Whakatūturutanga ā-Ture

Compliance with Statutory Decision-making Requirements (ss 76 - 81 Local Government Act 2002).
(a) This report contains:
(i) sufficient information about all reasonably practicable options identified and assessed in terms of their advantages and disadvantages; and
(ii) adequate consideration of the views and preferences of affected and interested persons bearing in mind any proposed or previous community engagement.
(b) The information reflects the level of significance of the matters covered by the report, as determined in accordance with the Council's significance and engagement policy.

Signatories / Ngā Kaiwaitohu

Authors	Diane Shelander - Senior Advisor Climate Resilience Sara Hames - Principal Advisor Policy Ellen Cavanagh - Senior Policy Analyst
Approved By	David Griffiths - Head of Strategic Policy & Resilience Lynn McClelland - Assistant Chief Executive Strategic Policy and Performance



Northern Water Services Entity

The service area includes the districts of: Auckland Council, Far North District Council, Kaipara District Council, Whangārei District Council.

Western-Central Water Services Entity

The service area includes the districts of: Hamilton City Council, Hauraki District Council, Kawerau District Council, Matamata-Piako District Council, New Plymouth District Council, Ōpōtiki District Council, Ōtorohanga District Council, Rangitikei District Council, Rotorua District Council, Ruapehu District Council; South Taranaki District Council, South Waikato District Council, Stratford District Council, Taupō District Council, Tauranga City Council, Thames-Coromandel District Council, Waikato District Council, Waipa District Council, Waitomo District Council, Western Bay of Plenty District Council, Whakatane District Council, Whanganui District Council.

Eastern-Central Water Services Entity

The service area includes the districts of: Carterton District Council, Central Hawke's Bay District Council, Chatham Islands Council, Gisborne District Council, Hastings District Council, Horowhenua District Council, Hutt City Council, Kapiti Coast District Council, Manawatu District Council, Marlborough District Council (excluding those parts included in the service area of the Southern Water Services Entity), Masterton District Council, Napier District Council, Nelson City Council, Palmerston North City Council, Porirua City Council, South Wairarapa District Council, Tararua District Council, Tasman District Council (excluding those parts included in the service area of the Southern Water Services Entity), Upper Hutt City Council, Wairoa District Council.

Southern Water Services Entity

The service area is the takiwā of Ngāi Tahu including the districts of: Ashburton District Council, Buller District Council, Central Otago District Council, Christchurch City Council, Clutha District Council, Dunedin City Council, Gore District Council, Grey District Council, Hurunui District Council, Invercargill City Council, Kaikoura District Council; Mackenzie District Council, Queenstown-Lakes District Council, Selwyn District Council, Southland District Council, Timaru District Council, Waimakariri District Council; Waimate District Council, Waitaki District Council; Westland District Council; and the parts of Marlborough District Council and Tasman District Council within the boundaries of the takiwā of Ngāi Tahu.

7. Rate Remissions: City Vacant Differential Rating

Reference / Te Tohutoro: 22/1709828

Report of / Te Pou Matua:	Andrew Jefferies, Manager Rates Revenue (andrew.jefferies@ccc.govt.nz) John Meeker, Principal Advisor Urban Regeneration (john.meeker@ccc.govt.nz)
General Manager / Pouwhakarae:	Jane Davis, General Manager Infrastructure, Planning & Regulatory Services (jane.davis@ccc.govt.nz)

1. Nature of Decision or Issue and Report Origin

- 1.1 This report seeks relief from the City Vacant differential rate for a number of Central City sites where construction was underway prior to the end of 2022. The report considers each case under Remission Policy 10 from the Annual Plan's Revenue, Financing and Rating Policies.
- 1.2 The City Vacant differential rating category was introduced in the 2022/23 Annual Plan. It was anticipated that during the differential's first year of application a number of planned developments might be impacted warranting consideration for remissions.
- 1.3 The decision in this report is considered to be of low significance in relation to the Christchurch City Council's Significance and Engagement Policy. The level of significance was determined because the sites affected are few in number and the recommendations made reflect fairness given the first year in Council levying the City Vacant Differential rate.

2. Officer Recommendations Ngā Tūtohu

That the Council:

1. Note the construction work that has commenced and is continuing at,
 - a. 33 Cathedral Square
 - b. 93 Cashel Street
 - c. 207 St Asaph Street
2. Grant rates remissions totalling \$79,518.05 including GST under Remission 10 (Other remissions deemed fair and equitable) of Council's *Rates Remission Policy* for the three properties as detailed in section 7.3 of this report.
3. Note the remissions reduce the net rates for those properties to the level that would have applied if the Business differential (rather than the City Vacant differential) had been applied on the value-based general rate for the 2022/23 financial year.

3. Reason for Report Recommendations Ngā Take mō te Whakatau

- 3.1 The three sites concerned had developments that were set to commence early in the 2022/23 financial year. Each had sought to initiate construction prior to the introduction of the City Vacant Differential Rate but were held back by COVID19 related delays to Council's processes. Under Remission Policy 10, Council is invited to *remit any rate or rates penalty when it considers it fair and equitable to do so.*

4. Alternative Options Considered Ētahi atu Kōwhiringa

- 4.1 Declining the remission (or deferring payment) would mean the landowners concerned would continue to pay the higher rating associated with the City Vacant Differential. Whilst it could be argued that the 2021 LTP consultation signalled the possibility that higher rates could be introduced (i.e. encouraging greater urgency in commencing development), progress of the three schemes was ultimately impacted by COVID19 related delays in Council's processes.

5. Background Detail Te Whakamahuki

Introduction of the City Vacant Differential

- 5.1 Within the 2022/23 Annual Plan, Council resolved to introduce the City Vacant Differential rating category within the Central City's Business and South Frame Mixed Use District Plan zones. This followed supportive community consultation in the 2021-31 Annual Plan process during autumn 2021. The introduction of the new differential rate category reflected the need to better allocate the costs and benefits of Central City activation projects, promotion and other services.
- 5.2 When the draft Annual Plan was published in March 2022, owners of vacant sites in the defined area were written to highlighting their potential exposure to the City Vacant Differential and urging them to conclude consents or improve their site appearance to secure remissions or exemptions.
 - 5.2.1 A number of sites were improved allowing remissions to be frontloaded, reducing the administrative burden of applying them retrospectively.
 - 5.2.2 Many temporary car park sites were granted consent between March and June 2022 supported by prioritisation within the Resource Consenting teams at the time. Holding an approved consent allowed these sites to be exempted from the City Vacant differential.

(NB. It should be noted that from 1 July 2023 sites will need to hold an approved consents and have amenity aspects of the consent (and its conditions) fully implemented to secure an exemption. This will be communicated to owners in February following initial surveys.)
 - 5.2.3 Five other car park sites, where consenting had been delayed by Council process (leaving them liable for the new differential) were also granted frontloaded remissions as guided by the late amendment to the financial policy requested by Council.

Remissions for permanent developments in progress

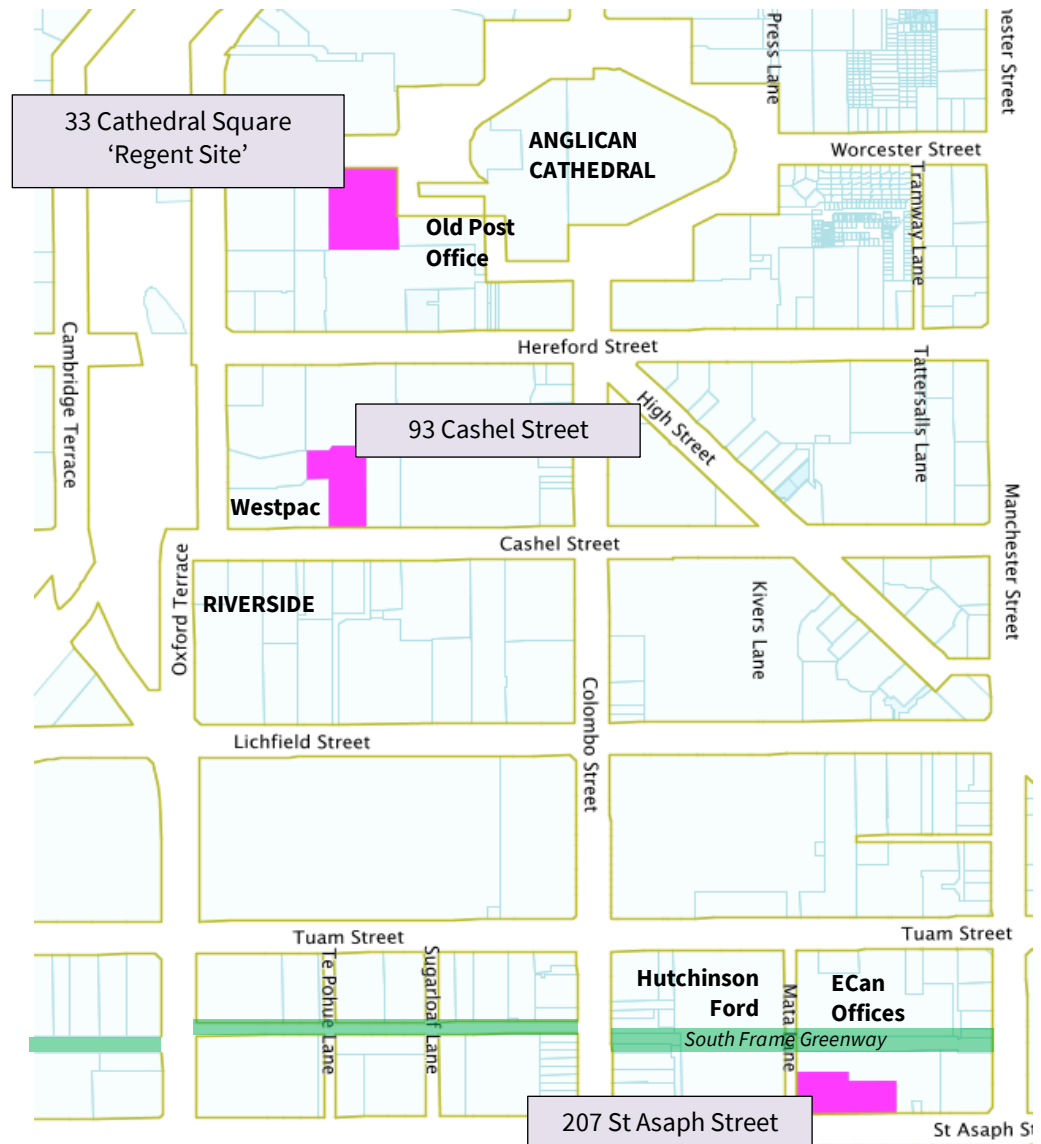
- 5.3 During development of the City Vacant Differential, there was debate about offering exemptions for sites considered 'under development' (which appeared in the draft wording). Further deliberation highlighted that there were examples of sites where resource consents for development had been granted but the schemes had never been implemented, leaving sites unimproved. In response, it was recommended that this term was replaced with 'under construction' which was more easily observed from surveys and building consent inspections.
- 5.4 Responding to concerns about specific cases, staff highlighted that in 'rare' cases where permanent development¹ or site improvement schemes were unforeseeably delayed by process, Remission Policy 10 could be applied to consider further remissions.
- 5.5 **Remission Policy 10: Other remissions deemed fair and equitable** has the objective, "to recognise that the Council's policies for rates remission cannot contemplate all possible situations where it may be appropriate to remit rates" and allows Council, "...by specific resolution, [to] remit any rate or rates penalty when it considers it fair and equitable to do so."
- 5.6 The three cases included in **Attachment A** are those 'rare' cases where delays have arisen, but where construction has proceeded as intended in a reasonable timeframe. Reasonable in this context has been advised to be commencement of construction prior the midpoint of the rating year

¹ Permanent in this context was advised to be enduring built development that contributes to the completeness of the Central City functional role and is, specifically, not time limited in nature (i.e. a temporary use).

(operationally being the shutdown before the Christmas break) with further observations of progress being offered when reporting (i.e. this report) is presented to Council.

- 5.7 Unless unduly delayed by a Council process², it is not envisaged that this type of remission is offered in future years given the new Differential will have been in operation for long enough for owners to be aware of the need to progress site improvement projects or initiate permanent development.

**LOCATIONS OF THE
SITES REFERRED
TO IN THIS REPORT**



- 5.8 Reflecting the points set out in **Attachment A**, staff recommend that remissions from the City Vacant Differential rate are provided for the three rating units for the 2022/23 year on the basis that owners,
- initiated their development intentions prior to the introduction of the City Vacant differential rate in the Annual Plan,
 - endured elements of consenting delay arising from COVID19 impacts on staffing / peak loading of Council's consenting function in the first half of 2022, and
 - commenced construction of their developments before and just after the midpoint of the rating year (noting the minor Building Consenting delay in the case of 93 Cashel Street)

² To the point where improvement / permanent development is held back ahead of late June site surveys that determine whether the site becomes liable for the City Vacant Differential in any given year.

6. Policy Framework Implications Ngā Hīraunga ā- Kaupapa here

Strategic Alignment Te Rautaki Tīaroaro

- 6.1 This report aligns with the Council's *Liveable City* Community Outcome – in particular the aim to encourage a *Vibrant and Thriving City Centre*. The three proposals will add activity, investment and improve perceptions of our Central City.
- 6.2 It also responds to Council's Strategic Priority of *accelerating the momentum the city needs* in that we are seeking to support these projects that enhance our 'vibrant, functioning central city.' Remissions in these cases would be reasonable recognition that, on occasion, blunt policy tools cannot always reflect specific circumstances – particularly during their initial implementation.
- 6.3 This report supports the Long Term Plan: 17.0.20.2 - Place-based policy and planning advice to support integrated urban regeneration, city identity, community leadership and placemaking.

Policy Consistency Te Whai Kaupapa here

- 6.4 The decision is consistent with Council's Plans and Policies. Remission Policy 10 allows for rates to be remitted in cases where rating policy is insufficiently flexible to reflect unforeseen situations.

Impact on Mana Whenua Ngā Whai Take Mana Whenua

- 6.5 The decision does not involve Ancestral land or a body of water or other elements of intrinsic value, therefore this decision does specifically impact Mana Whenua, their culture and traditions. The decision is also not a matter of interest to Mana Whenua nor does it impact on our agreed partnership priorities with Ngā Papatipu Rūnanga

Climate Change Impact Considerations Ngā Whai Whakaaro mā te Āhuarangi

- 6.6 The application of remissions has no direct Climate Change implications. In applying the policy generally, permanent development or enhancement of sites improves the appeal of the Central City which can be accessed by workers, visitors or city residents by a range of active and sustainable transport alternatives.

Accessibility Considerations Ngā Whai Whakaaro mā te Hunga Hauā

- 6.7 No specific accessibility considerations related to the recommendations in this report have been identified.

7. Resource Implications Ngā Hīraunga Rauemi

Capex/Opex Ngā Utu Whakahaere

- 7.1 There are no specific opex / capex implications

Impact on rates revenue

- 7.2 Rate remissions for the sites would reduce rates to the level that would have applied if the Business differential (rather than the City Vacant differential) had been applied on the value-based general rate. The impacts are set out in the table below.
- 7.3 A total of **\$79,518.05** (incl GST) of revenue would be forfeited through the grant of the remissions.

Figures in Dollars (\$) (incl GST) <small>Calculations 23/15257</small>	Capital Value	General Rate using City Vacant Differential at 1.293 cents/\$ of Capital Value	General Rate using Business Differential at 0.548 cents/\$ of Capital Value	Proposed Remission (incl GST)
Site	CV	CV x CVD rate	CV x BD rate	Difference
93 Cashel Street	3,580,000	46,296.02	19,641.10	26,654.92
33 Cathedral Square	5,560,000	71,901.09	30,504.05	41,397.04
207 St Asaph Street	1,540,000	19,915.05	8,448.96	11,466.09
Revenue foregone by granting remissions (incl GST)				79,518.05

8. Legal Implications Ngā Hīraunga ā-Ture

Statutory power to undertake proposals in the report Te Manatū Whakahaere Kaupapa

8.1 The Council can remit rates in accordance with its Rates Remission Policy.

Other Legal Implications Ētahi atu Hīraunga-ā-Ture

8.2 None identified.

9. Risk Management Implications Ngā Hīraunga Tūraru

9.1 The only risk identified in considering these cases is consistency in application of the policy.

9.2 Each are exceptions whose measurable development progress can reasonably be demonstrated to have been affected by consenting and COVID19 related delays that were beyond the control of owners – particularly in the first year of the new City Vacant Differential rate's introduction.

Attachments Ngā Tāpirihanga

No.	Title	Reference	Page
A ↓	Attachment to report 22/1709828 (Title: Council - Vacant Site Rate Remissions 15Feb2023 - Attachment A)	23/50407	23

In addition to the attached documents, the following background information is available:

Document Name – Location / File Link

Confirmation of Statutory Compliance Te Whakatūtuturunga ā-Ture

Compliance with Statutory Decision-making Requirements (ss 76 - 81 Local Government Act 2002).

(a) This report contains:

- (i) sufficient information about all reasonably practicable options identified and assessed in terms of their advantages and disadvantages; and
- (ii) adequate consideration of the views and preferences of affected and interested persons bearing in mind any proposed or previous community engagement.

(b) The information reflects the level of significance of the matters covered by the report, as determined in accordance with the Council's significance and engagement policy.

Signatories Ngā Kaiwaitohu

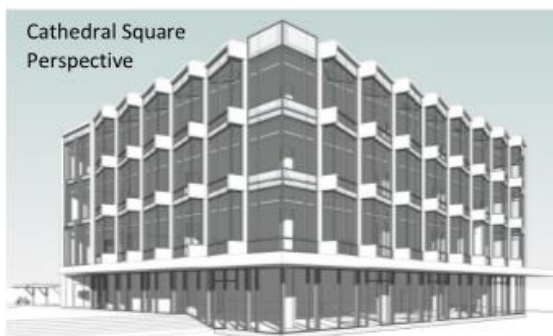
Authors	John Meeker - Principal Advisor Urban Regeneration Andrew Jefferies - Manager Rates Revenue
Approved By	Bruce Moher - Manager Corporate Reporting Bruce Rendall - Head of City Growth & Property Leah Scales - General Manager Resources/Chief Financial Officer Jane Davis - General Manager Infrastructure, Planning & Regulatory Services

Council – 15th February

Attachment A: City Vacant Differential - Remission candidate sites

33 Cathedral Square

The Development: a 4 storey commercial development with retail/hospitality opportunities at ground level and three levels of office space above fronting the corner of Worcester Boulevard and Cathedral Square.



Process Challenges: The resource consent application was submitted in April 2022. At that time the combination of COVID19 infection impacts on staff capacity combined with a peak of new applications for development in early 2022 conspired to overwhelm Council's consenting processes.

The Resource Consent was granted on 15th June and the stage 1 Building Consent was approved on 23rd November.

Development progress: The photographs below show that initial site preparation for development commenced in late November including the establishment of a site office and erection of a construction hoarding around the site. Initial groundworks were underway in December.



It is expected that site work – paused over the holiday period - will be underway when this report is considered by Council.

93 Cashel Street

The Development: 1-2 storey commercial development with retail/hospitality opportunities fronting Cashel Mall and Cashel Lane/Terrace Piazza



Cashel Mall Frontage



Cashel Lane/Piazza Frontage

Process Challenges: The resource consent application was submitted in April 2022. At that time the combination of COVID19 infection impacts on staff capacity combined with a peak of new applications for development in early 2022 conspired to overwhelm Council's consenting processes. In this particular case, the original proposal could not be supported and was subsequently scaled back in response to the decision to require public notification obligations.

Development progress: Initial site preparation for development commenced in December and over the summer holiday season a permanent hoarding has been erected as shown in the photographs below.



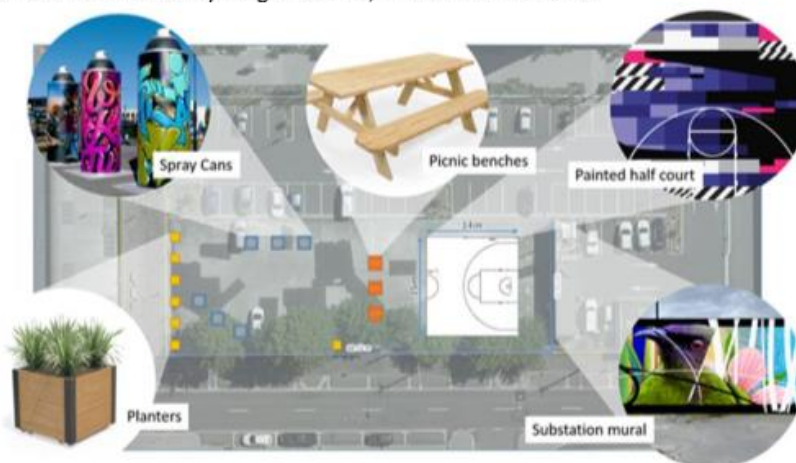
It is expected site work will be underway when this report is considered by Council.

207 St Asaph Street

The Development: This site had been used for a number of years to store vehicles under a commercial arrangement with the neighbouring Hutchinson Ford business. That arrangement was set to come to an end in June 2022 leaving it vacant. With Environment Canterbury having no immediate plans to develop it, the site would have become vacant and attracted the newly introduced City Vacant Differential rating.

During dialogue with Environment Canterbury in late 2021, an opportunity arose to collaborate in the delivery of a youth space as an Enliven Places project. The project would enable Environment Canterbury to respond to the Vacant Site challenge (demonstrating public sector leadership) by adding activity to a part of the South Frame which would benefit young residents, workers and visitors.

The project involves Life in Vacant Spaces, Watch This Space, BasketballINZ, as well as the Council and Environment Canterbury, will incorporate as conceptualised here.



Process Challenges:

A project plan and initial design work was concluded by the end of March 2022 with the expectation that construction on the site would commence in June. However, COVID19 cases among key CCC staff delayed detailed scheme design and a methodology to manage the potential for land contaminated was needed to inform procurement. The resultant delay was then compounded by the squeeze on the availability of contractors meaning that delivery could not be scheduled to commence until September. As a result the site was recorded as being liable for the City Vacant Differential during site surveys in June.

Development progress: The development progress of the Youth Space in December 2022 is shown in the images here.

It is expected site works will be completed when Council consider the remission request.



8. Central City Biannual Report: July to December 2022

Reference / Te Tohutoro: 22/1683862

Report of / Te Pou Laura Quaid, Planner Urban Regeneration
Matua: (Laura.Quaid@ccc.govt.nz)

General Manager / Jane Davis, General Manager Infrastructure, Planning & Regulatory
Pouwhakarae: Services (jane.davis@ccc.govt.nz)

1. Nature of Information Update and Report Origin

- 1.1 For information only, this latest biannual update provides elected members with information and statistics about Council funded regeneration activity within the Central City for the period July to December 2022.
- 1.2 Staff have been reporting on such activity within the Central City via a biannual report since 2015, as previously agreed with elected members.

2. Officer Recommendations Ngā Tūtohu

That the Council:

1. [Receive the information in the Central City Biannual Report.](#)

3. Brief Summary

- 3.1 **Attachment A** summarises activity that responds to the themes set out in the [Central City Action Plan](#). Highlights from July – December 2022 include:
 - An uplift in the number of visitors to the Central City, influenced by the opening of Te Pae, the return of cruise ships to Lyttleton Harbour and the easing impacts of COVID-19 on travel. This has had positive benefits for businesses.
 - A higher level of amenity across a number of temporary car parks, implemented in order to avoid the City Vacant Differential rating.
 - Transformation of a vacant site on St Asaph Street into a basketball court with seating and a mural through a partnership with ECAN, Watch this Space and Basketball NZ.
 - Removal of 235 High Street from the Barrier Sites programme given that its repair is well underway. 3 others have taken significant steps including 92 Lichfield Street where the protective containers along its frontage were removed in December after 10 years.
 - New, updated content across Central City lighting installations.
 - A number of events, activations and engagement via grant funding for Gap Filler, The Green Lab, Life in Vacant Spaces and the Central City Business Association.
 - A 5% increase in Central City employment since 2021.
 - Resource consent applications for a number of multi-unit developments and a mixed-use office, retail and hospitality development on Manchester Street.
 - Completion of 79 homes between July and December 2022, with an estimated 7,760 residents now calling the Central City home.
 - Completion of the final section of the South Frame. In Cathedral Square, paving work outside the former post office building has been completed and the stabilisation phase of the Christ Church Cathedral is nearly complete.

Attachments Ngā Tāpirihanga

No.	Title	Reference	Page
A ↓	Central City Biannual Report - July - December 2022 - PDF	23/99373	29

In addition to the attached documents, the following background information is available:

Document Name – Location / File Link
Not applicable

Confirmation of Statutory Compliance Te Whakatūturutanga ā-Ture

Compliance with Statutory Decision-making Requirements (ss 76 - 81 Local Government Act 2002).

(a) This report contains:

- (i) sufficient information about all reasonably practicable options identified and assessed in terms of their advantages and disadvantages; and
- (ii) adequate consideration of the views and preferences of affected and interested persons bearing in mind any proposed or previous community engagement.

(b) The information reflects the level of significance of the matters covered by the report, as determined in accordance with the Council's significance and engagement policy.

Signatories Ngā Kaiwaitohu

Authors	Laura Quaid - Planner Urban Regeneration John Meeker - Principal Advisor Urban Regeneration Carolyn Bonis - Team Leader Urban Regeneration
Approved By	Bruce Rendall - Head of City Growth & Property Jane Davis - General Manager Infrastructure, Planning & Regulatory Services

ATTACHMENT A

Central City Biannual Update

July—December 2022

Using themes in the [Central City Action Plan](#), we summarise:

- progress towards long term Central City goals.
- recent projects to improve Central City vibrancy and liveability.
- the use of Council grants and funding.

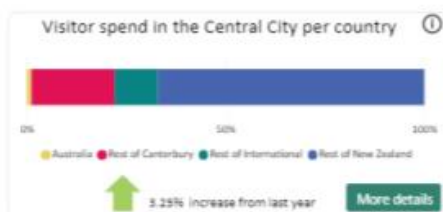
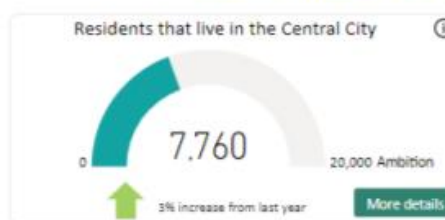
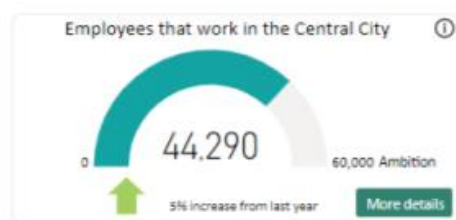
Headlines

- **Te Pae** has hosted over 180 events since May 2022. These events have brought more than 60,000 people to the city and contributed close to \$45 million to the local economy. Local businesses are benefiting from the success of Te Pae. With a busy events calendar for 2023 it is hoped the benefits can continue to grow. More information from [Te Pae](#).
- **The return of cruise ships**—dockings of large cruise ships in Lyttelton Harbour began again in October 2022 after an 11 year break. Cruise passengers visiting the Central City has been a boost for hospitality, retail and service providers. ChristchurchNZ has recruited volunteers to act as 'City Champions' to welcome and provide information to visitors.
- **Visitor spend**—Over the past 2 years domestic visitors have filled the gap left by the loss of international visitors. Over the last 6 months there has been a slow increase in the amount of international tourists returning to Christchurch. Visitor spending in Q3 2022 is 48% higher than Q3 2021.
- **Employee growth**—A 5% increase in employees working in the Central City during 2022 was reported, bringing the total to over 44k employees. Further growth is needed, but if sustained, the current growth rate should help to meet the Council's ambition of 60,000 employees by 2028 (more information on page 6 of this attachment).
- **Christmas spending**—An upward trend in Christmas spending for Canterbury appears to be reflected in Central City activity, as reported in the [Press](#)



Progress towards goals for the Central City.

Council tracks progress on a group of key measures and ambitions as part of delivering our **goal of a prosperous, vibrant, liveable central Christchurch**. The table below sets out current results. You can find out more about trends and influences on these subjects on other pages of this report and the full set of measures at www.ccc.govt.nz/our-progress/



Amenity and Activation

Light up the City

Waitaha Kōanga (Spring in Canterbury) Central City lighting: A trail of 10 spring-themed projections are on display across the Central City. Local artists Wayne Youle (Ngāpuhi, Ngāti Whakaeke, Ngāti Pākehā) and Apex the Artist (Ngāti Ruanui) created the original works to celebrate Spring in Canterbury. The trail navigates past the Canterbury Museum, the Cathedral, Victoria Square and Cashel Mall. Artwork interpretations and a map are on [Toi Ōtautahi](#). Delivered by the Enliven Places Programme.

Light Shadows as darkness falls: Illuminated, larger-than-life human figures jump, run, play and dance across the prominent wall in Cashel Mall at 110 Cashel St. Light Shadows was developed by Gap Filler in conjunction with InCommon and the White Room Creative Space, and is in partnership with the Enliven Places Programme. Light Shadows is the first installation in the Programme's new calendar of seasonal, creative Central City lighting installations.



Temporary Site Activation: Rates Incentive

Rates Incentive for Property Owners supports an increase in activity by providing a financial incentive to property owners of vacant spaces to encourage temporary activity while plans for permanent development are progressed. The Incentive will run until 30 June 2024, with a focus on Central City interior vacancy. <https://ccc.govt.nz/rates-incentive/>

Budget 2022/2023 (city-wide): \$40,000

Credited this period: \$13,104

Balance 31 December 2022: \$26,895

Vacant Sites Programme: - www.ccc.govt.nz/vacantsites

Partnerships with site owners

207 St Asaph Street: A new youth space partnership - underway

The Enliven Places Programme partnered with Environment Canterbury, Watch This Space and Basketball NZ to transform a prominent vacant site for at least 2-3 years while plans for future development are being explored.

The site is located near the South Frame, includes a painted half basketball court, seating, a mural and giant spray cans for street art workshops by Watch This Space. Mural painting on the court will be completed during January. An opening event will be held in February.



207 St Asaph Street



121 Manchester Street: Dance-o-mat - completed

The Enliven Places Programme supported Gap Filler with the new location for the Dance-O-Mat which was completed in September. The programme contributed towards landscaping, pathways and planters.



121 Manchester Street—Dance-o-Mat

Amenity and Activation (continued)

July–December 2022

Vacant Sites Programme

The most visible areas of progress have been in improvements to temporary car parks.

A number of sites have completed their upgrades. Work on other sites will need to be completed by June if owners are to avoid the City Vacant Differential rating into 2023/24. In 2022/23 a year's grace was allowed given many sites saw COVID19 related delays to consenting that meant there was insufficient time to implement new standards.



74 Oxford Terrace



Arts Centre (Hereford Street)



130 Hereford Street

Barrier Sites Programme - www.ccc.govt.nz/barrier-sites

There are currently 16 Barrier Sites left on the list, 13 of these have a commitment to action.

Removed from programme - 1

- **235 High Street (former Hunters and Collectors)**- repair of this building is now well underway and once complete the adjacent site will be developed as a second phase to this exciting new collaborative office space development.

Remaining Barrier Sites—Latest progress - 3

- **159 Hereford Street (Malvern House)** - The glazing on the prominent western façade has been replaced, making a dramatic improvement to its appearance. Meanwhile, building consent approvals are underway for internal strengthening and refurbishment.
- **92 Lichfield Street (Sargoods)** - Remediation of the southern wall allowed container protection to be removed in December after 10 years on the street.
- **170 Oxford Terrace (Former Noahs/Rydgas hotel)** - Negotiated insurance settlement was announced in December 2022. Work to reinstate the hotel expected to commence in “early 2023”



Improved façade at 159 Hereford Street



Containers removed from 92 Lichfield Street

Updates on other remaining Barriers Sites with a commitment to action-10

226-234 Cashel Street (Former IRD building)	Building consent approved
141 High Street (last unit in the Duncan's building)	Building consent determination awaiting further information
214 Tuam Street (Odeon Theatre)	Works underway to stabilise façade
116 Worcester Street (State Insurance Building)	Repair underway—Building consent issued in April 2022.
119 Armagh Street (Former PWC Building)	Awaiting decisions as part of the Catholic Precinct development.
91 Victoria Street (Victoria Mansions)	Considering options in light of new height limit opportunities
179 Tuam Street (Sol Square)	Building consent approved—initial works in progress
170 Cashel Street (former Holiday Inn)	Resource consent approved June 2022 for office/retail building
205 Manchester Street (Blue Jean Cuisine)	Continuing dialogue about reopening Tramway Lane
25 Peterborough Street (Peterborough Centre)	Considering options in light of new height limit opportunities
Sites where the intentions are yet to be confirmed or are subject to an insurance dispute - 3	
137 Cambridge Terrace (Harley Building)	Dialogue in progress with a potential buyer
112-114 Manchester St (2 Fat Indians Building)	No progress
161 Hereford Street (Hereford Suites)	No progress

Amenity and Activation (continued)

July–December 2022

Grant funding : City-making partners

In August 2021 the Council resolved to establish three year grant funding agreements with city-making partners Gap Filler, The Green Lab and Life in Vacant Spaces. Multi-year funding recognises these organisations are place leaders in Christchurch. Suburban work will be reported in the suburban biannual report (Oct–March 23).

In 2021 the Central City Business Association (CCBA) was funded by a targeted rate, enabling the CCBA to grow action on key Central City issues and support business-led collaborations that grow interest among shoppers and visitors.

Life in Vacant Spaces (LiVS)

Works completed in this reporting period:

- Over 1600 activation days in the Central City, across 12 Central City licenses (note 56% of property portfolio is in the Central City)
- 10 new partner projects supported including: the Learning Lounge (Cathedral Junction); The Green Lab's 'understory' (the Welder)
- Delivered [LiVS Incubator](#) on Cashel Street (Sept – ongoing). The temporary space hosted open studios, co-working, start-ups, art installations, community events, workshops, talks and an exhibition space
- Delivered LiVS [10 Year Anniversary](#) open air exhibition on Cashel Street



Continuing activation & new projects in development:

- Support 17 ongoing projects including: Food Resilience network on Peterborough St; Gap Filler's Dance-O-Mat site
- Exploring partnerships with ArtStart to support young creatives; Arts Northern Rivers (NSW) on reciprocal pilot residency; University of Canterbury's Resilient Cities programme



Partnerships, participation fees and funding leveraged:

- LiVS partnered with Gap Filler's Urban Play Programme and the Council for Streets for People on Gloucester Street, early 2023 delivery.
- CCBA partnership connected LiVS with various developers which led to procuring a new site in The Terrace for early 2023
- In-kind support and other funding to over 100% of grant value, including ChristchurchNZ support for LiVS Incubator, and reduced property rent.

The Green Lab

Works completed in this reporting period:

- Mātanga Taiao Māori (Māori Environmental Consultant), Community Design and Build Contractor, Kaiārahi Kaupapa Māori Contractor, Kaihāpai Reo Contractor appointed
- Three Community Economic Return on Investment Interns hosted and supported - partnership with Massey University and University of Canterbury
- '[understorey tuarua](#)' at The Welder, 22 Welles St. 3 May - 2 December 2022. 6 months with 61+ events, 692 attendees and 237 individuals visited over 2100 times



Continuing activation & new projects in development:

- 10 [Queer Games Nights](#) - a dry, all ages event for LGBTQIA+ community. 250+ attendees
- 32 Wednesday Writers - weekly community connection event for all writers. 32 events; 200+ attendees
- 4 Whare Tihau - a monthly dry, whanau-friendly Te Reo Māori event. 24 attendees, collaboration with Rekindle on Rāranga weaving
- Mental Health Awareness Week Programming - 4 x Pod Chats & Plant Pals. 74 attendees and 3 sponsors
- The Art of the Family Recovery Garden - pod and greening installed at Tūranga to support Art East Group
- Greening and co-working facilities shared with Toi Auaha
- In development: Wāhi Taiao (for Streets for People); Te Akomanga Professional Development Series (Te Tiriti & Kaupapa Māori)



Partnerships, participation and funding leveraged:

- A range of over 16 multidisciplinary partnerships and collaborations
- 35 volunteers contributed 700+ volunteer hours (including 3 interns)
- In-kind support and other funding to 200% of grant value



Amenity and Activation (continued)

July–December 2022

Gap Filler

Works completed in this reporting period:

- Bombardments — public installations, 9 craftivists, 6 workshops, 1 Parking Day event
- Skate the City events teaching wahine skating skills
- Light Shadows projection at 110 Cashel and at 153 High St, collaboration with 4 groups
- [Pae Tākaro](#) Place of Play exhibition space, 7 exhibitions with local artists
- Play Advocacy meetings, hui and networking with 40 people and groups, including supporting ChristchurchNZ's city brand and identity development
- Play Support for other play initiatives including the Hip Hop Summit
- Facilitated the [Ōtautahi Kūmara awards](#) to celebrate local placemaking
- Research and development on Participatory Design and Place Governance



New projects in development and continuing activation:

- Super Street Arcade, Buzzwire, relocation and upgrade of Dance-O-Mat
- Outreach — inviting those experiencing barriers to civic participation, including The Commons Project
- In development: Play Trail (Urban Play feature on SmartView), physical map; 64 Ways of Being; Pae Tākaro Gloucester Street Shared Space; Ōtākaro Floating Festival scoping, engagement and major funding application



Partnerships, participation and funding leveraged:

- Multidisciplinary partnerships with 16 organisations
- Estimated 1,210 volunteer hours
- In-kind support and other funding to over 900% of grant value

Outside of grant funding agreement

- Placemaking One Central (ongoing) including [Bloco de Carnaval](#) on Gloucester Green; Latimer Asset Mapping through the Council's P8011; continued programming and relocation of DiversCity



Central City Business Association (CCBA)

CCBA

Priority 1 – “The Place to be”

- Attraction Studio have helped deliver a new brand, marketing strategy and [website](#) which were completed and launched at the AGM in October
- Partnered with HospitalityNZ, ChristchurchNZ, Property Council and Council to deliver [Turn up the Heat](#) Winter Festival as well as running two major events - Chill in the City (July/August) and Christmas in the City (December).
- Ran a 3 month street security trial service to help reduce inner city anti-social behaviour with financial support from CCC and self-funded the full cost of extending that service through the Christmas and summer holiday



Priority 2 – Build awareness and engagement of the CCBA

- The [Curators programme](#) was launched, with eight curators signing up to help engage with members. It's helped create the Christmas Treasure trail promotion which engaged 26 individual businesses.
- 415 volunteer hours of support from our community (valued at \$9,960), donations of \$18,002 and a further \$4,500 of in-kind support.
- Six member events and activities were held to engage and inform members, including the Mayoral Debate, Annual General Meeting and Curators workshops and undertake surveys with members to gauge their views on emerging issues.



Priority 3 – Advocating for Business

- Regular meetings of the Inner City Collaborative Working Group, which included Housing First and the CDHB to help provide a greater understanding of the street based issues.
- Advocacy on key Central City issues including the Canterbury Arena/ Te Kaha, Inner city safety and street upgrade/parking.



Growth and Economic Activity

Employment

Annual employment statistics are published in Q3 each year. A steady growth in employment can be seen since 2015.

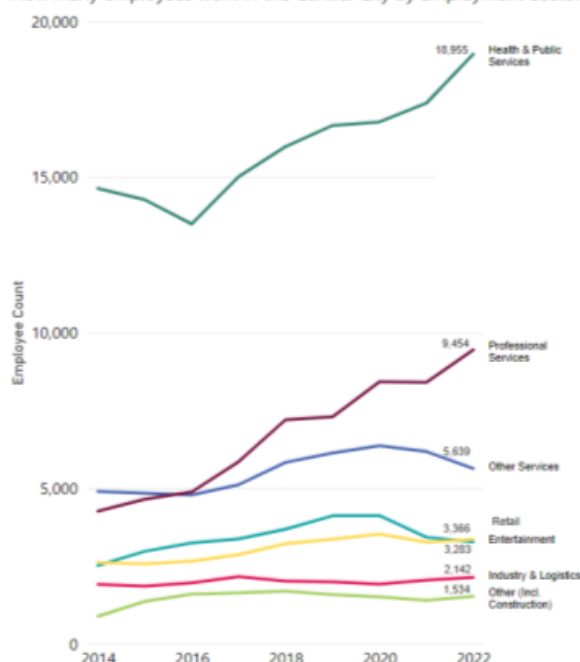
COVID19 caused dips in the number of employees particularly in the entertainment and retail industries. A net total of 665 jobs were lost during 2021 (loss of 1.6% on 2020).

Data released during Q3 2022 show there are now 44,290 employees working in the Central City. This is a 5% increase from 2021 and recoups the total losses endured during the COVID19 pandemic period although that recovery is not across all sectors.

- Health and public services sector +1,575
- Professional services sector +2,621
This growth has been assisted by business relocation following the end of medium term suburban leases.
- Entertainment and hospitality sector -148
Reflecting the challenges that COVID19 is still having on this sector, employment levels are still to fully bounce back.

To reach the aspiration of 60,000 Central City employees by 2028, job growth will need to accelerate.

How many employees work in the Central City by Employment Sector?



Central City Activity

Pedestrian activity

Improving rates of COVID, an increase in international tourism, a return of cruise ships and an increasing number of reasons to visit the Central City is resulting in an increase in pedestrian numbers across the Central City. In comparison to December 2021 pedestrian activity is 24% higher in December 2022.

Pedestrian activity continues to be highest around Riverside, the Bus Interchange and Cashel Mall.

The return of cruise ships

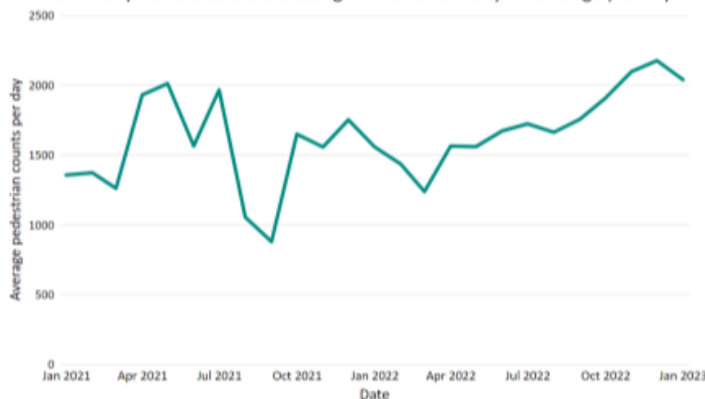
The return of Cruise Ships to Lyttelton has created a real buzz across the city. Between the end of October and December 2022, 26 cruise ships have docked in Lyttelton Harbour with over 56,000 passengers. With many of these passengers travelling by bus to the Central City, businesses are benefitting from the increased patronage.

More information on future cruise ships is available on ChristchurchNZ's [website](#).

Central City Spending

The diverse and distinct offering of the Central City is resulting in increasing spending in comparison to previous years. The Central City attracts 19% of the total spending in Christchurch.

How many Pedestrians are walking in the Central City on average per day



Spending in Christchurch's main commercial centres

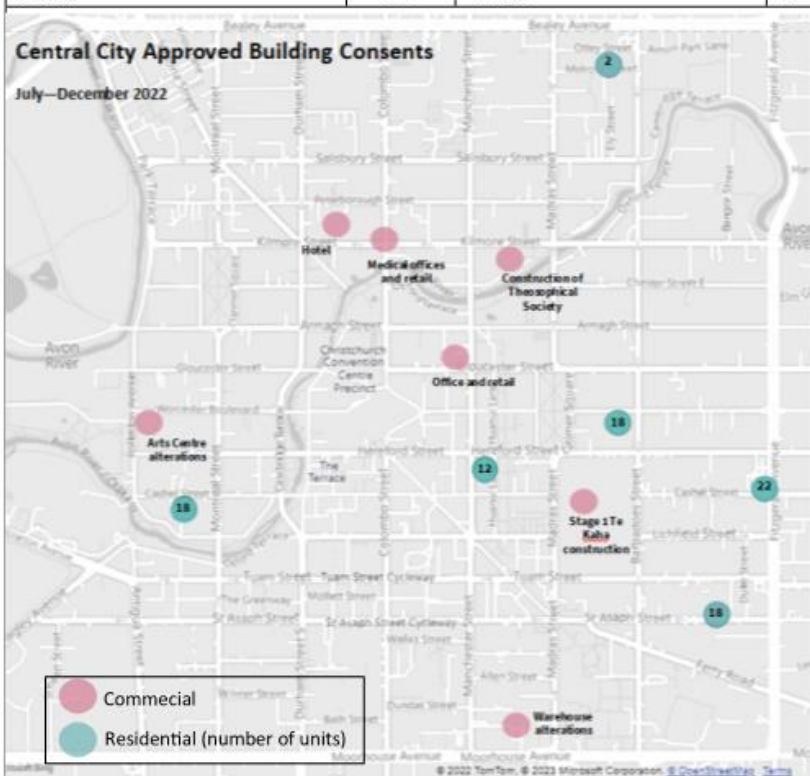


Growth and Economic Activity (continued)

July–December 2022

Central City Building & Resource Consents

Resource consent applications received (July–December)	Number	Building consent applications received (January–June)	Net New Homes (units)	Floorspace (sqm)
within 4-Aves (excl. core)	74	Central City (South Frame)	0	0
within Core	14	Central City Business	12	2,203
		Central City Mixed Use	40	7,362
		Central City Residential	38	3,109
TOTAL	88	TOTAL	90	12,673



The number of **resource consent applications** for Central City development has fallen from the Jan–June 2021 peak of 289 but remains well above the 5 year recent average.

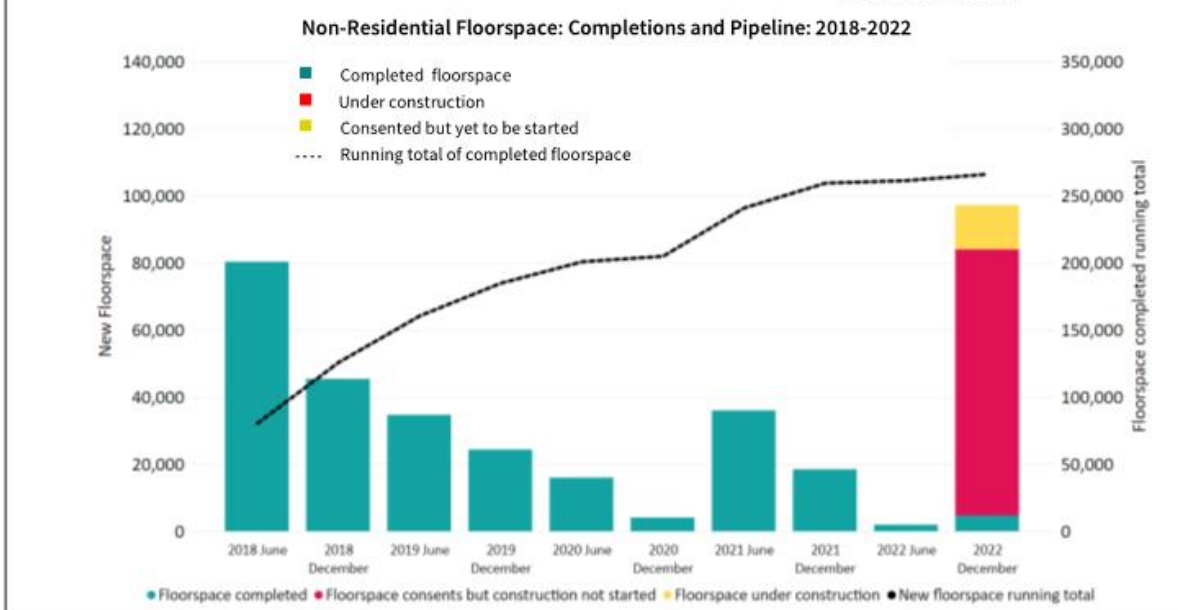
Significant applications include:

- 21 new homes on Montreal Street.
- Mixed use development with office, retail and hospitality on Manchester Street.

The map shows **Building Consents** approved over the Jul–Dec 2022 period. Over 90 new homes have been consented on a range of sites. Development outcomes are for townhouses and apartment buildings.

A notable non-residential consent is the Stage 1 consent for ground improvements for Te Kaha.

The graphic below shows the **delivery of non-residential floorspace** in the 2nd half of 2022 was 4,718 sqm - delivery still being significantly below 2021. However, there remains a strong pipeline of non-residential development underway or with approved consents.



People (continued)

July–December 2022

Central City Residential Programme (Project 8011)

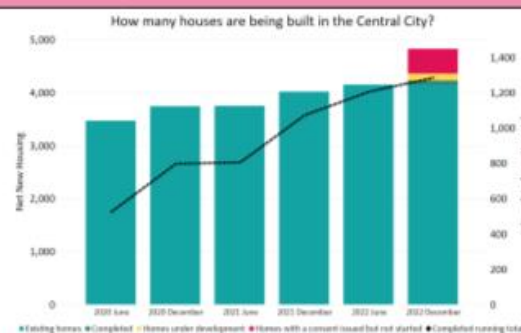
The Central City Residential Programme was initiated by the Council in September 2018. Its overall goal is to promote housing development and grow the Central City population over a 10 year timeframe.

Progress towards 20,000 residents

In 2022 there was an estimated 7,760 residents living in the Central City. This is an increase of 3% from 2021. The previously reported estimated population of 8,080 in 2021 was revised during the 2022 update (StatsNZ periodically adjust past estimates).

To reach the Council ambition of 20,000 residents by 2028 the rate of growth will need to accelerate. The key to this is increasing density and building heights of future residential developments.

The Central City outcomes [data](#) shows a good level of development activity with 79 homes completed between July and December 2022. There is a strong pipeline of new housing development in the Central City with 467 homes consented for development (but not yet commenced) and 130 homes currently under construction.



South-East Neighbourhoods



The South-East Neighbourhoods of the Central City have the most opportunity to grow and transform. With key catalysts such as Te Kaha, the greater density enabled through recent legislation and a supply of potential development sites, this area could become a vibrant, mixed-use neighbourhood. Housing development activity is already apparent in the south-east neighbourhoods (see consent map adjacent).

A strategic framework is in development to guide work in this area (including informing public works). Initial engagement has commenced to help form the key moves and focus areas of this framework.

Some early moves are currently underway in this area:

- **A creative hoarding** (pictured above) has been developed in collaboration with residents that reflects the key places and the future of the south-east Central City. This is a valuable resource for developers to use for their construction project ([files](#)).
- **Southwark Street** is getting a modest upgrade through the Enliven Places Programme. Plans are in development to add trees, seating and artwork to the small street which has new residential development underway.
- Investigations commenced to identify opportunities for increased open space links and tree canopy cover in the south-east.
- Gap Filler continued to support community building in the Latimer neighbourhood with a follow-up event.



Building Consents: June 2020—November 2022 in the south-east



People (continued)

July–December 2022

Smart Christchurch Programme

Free Wi-Fi

- Upgraded and expanded coverage of high speed Free Wi-Fi in the Central City was launched in June 2022. As a collaboration with Enable, this enhances the business and visitors' experience to a standard now expected of a major city.

Stream by the river.

Christchurch City Council
Christchurch Free Wi-Fi
powered by enable in our city centre



- With borders reopening to international travellers this is a great resource for visitors.
- There is 40% more Free City Wi-Fi connections and substantially increased usage (Mb/s) on the days cruise ships had excursions into the city.
- The numbers of overall users have been increasing steadily with over 100,000 connections from locals and visitors since its launch.

Smart Cameras

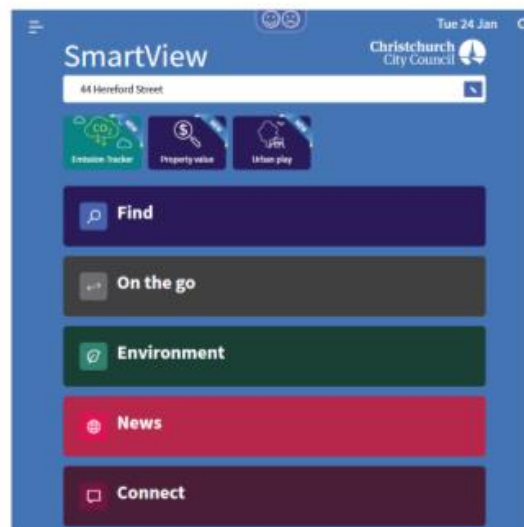
- Our network of 22 smart cameras across the Central City continue to provide great data to help understand and share information about pedestrian flows and peaks over seasons and events in real-time and in greater detail than before.
- The network has recently been updated to enable monitoring of electric scooters and bicycles as well as work continuing on developing new ways of visualising data.
- An expansion to the network will see two additional cameras installed in Linwood Village in February 2023 to support pre and post-construction monitoring of the streetscape upgrade.

Innovation Expo

- The Innovation Expo was cancelled in 2022 as a result of COVID-19. The 2023 event will be on 10 and 11 September at Te Pae.
- An estimated 100 exhibitors and 10,000 visitors will be in attendance. We also intend to hold an Innovation Summit alongside the expo at which speakers from around New Zealand will share their innovation stories and facilitate inspiring panel discussions.

Smart View

- [SmartView.ccc.govt.nz](https://smartview.ccc.govt.nz) is a web app that pulls together real-time data from a range of public and private organisations, making information easy for locals and visitors to access.
- Usage of the web app over the last 6 months has averaged 110 users per day and 160 sessions per day. The number of page views over the July–December reporting period was 105,000.
- A mobile app version of SmartView that can be downloaded from Android and Apple app stores is under development. The next iteration of SmartView will be launched before the end of 2023 and will be informed by community feedback.



River quality monitoring

- Working with Spark NZ and company Androit, the Smart Christchurch programme recently installed four real time river quality monitoring stations along the Ōtākaro Avon River.
- This is a first for a New Zealand council and will enable the Council and the community to understand what is happening to water quality in real time. Signage will be installed shortly.

People

Events Programme

With Covid restrictions gone, we saw a return to normality of events to the city.

July saw the tail end of Tirama Mai, our lighting event celebrating Matariki, plus Go Live music festival at the Town Hall.

Later in the year we undertook to bring Christmas back into the Central City by decorating with festive street banners, Christmas-themed decorations, including artist commissioned pieces, a Christmas Family Festival held in Victoria Square and to the delight of young and old, Santa punting down the Avon River. We worked closely with the Central City businesses to coordinate activity. This was coupled with the return of Coca-Cola Christmas in the Park which saw approximately 15,000 attendees get into the spirit of the season in Hagley Park.

We have seen not only the post-Covid return of some of our favourite events such as Diwali but also the emergence of new celebrations in the Central City such as Ōtautahi Smoke (all in Hagley Park) and Armageddon moving into Te Pae after outgrowing the Christchurch Arena.



Note: this report does not include the events run by other agencies such as ChristchurchNZ, events outside the Central City or those that are reported elsewhere. For Christchurch NZ events refer to www.christchurchnz.com/explore/whats-on

Event Name	Event Date	Anticipated Attendance	Actual Attendance	Funded or Produced
Tirama Mai	24 June – 3 July	65,000	75,000	Produced
Go Live	22 – 23 July	1,600	1,400	Produced
ISCC Diwali 2022	22 October	20,000	20,000	Funded
Coca-Cola Christmas in the Park	26 November	20,000	15,000	Funded
Christmas Family Festival	4 Dec	2,000	2,000	Produced
NYE22	31 Dec	20,000	18,000	Produced

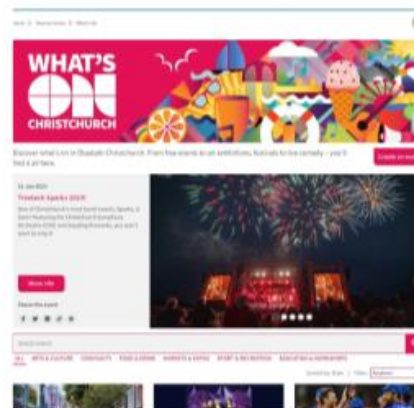
Marketing and Promotions

Due to the Christchurch City Council's climate commitment, we are cautious over how much printed material we produce. A decision was made early not to produce a hard copy of the 'What's On Guide' this summer to help reduce our impact on the environment.

Instead, we put this budget into an 'Always On' way of advertising across our social channels and google which meant we would always have promotion out in the market. Moving things more into the digital space means all information on events is always up-to-date and residents always know what is happening around the city.

The What's On webpages received 318,802 views between 1 July – 31 Dec 2022, which was an 84% increase from last year. Our Always On advertising in the market helped drive a majority of this traffic to the website and helped generate the spike in web traffic.

[What's On](#) Christchurch currently has 5125 Instagram and 25k Facebook followers and 12,463 newsletter subscribers.



Getting it Done: Delivering Major Projects

July–December 2022

The following progress has been made between July and December 2022:

- **South Frame**— The final section of the South Frame has been completed
- **Te Kaha**— In July 2022 following a period of public consultation the Council agreed to increase the budget for the multi-use arena to \$683 million. A fixed price design and construction contract will avoid further cost escalations. Site preparation works have been underway getting the site ready for foundations. Concrete pours began during December.
- **One Central East Frame development**— construction is progressing quickly along Manchester Street with new homes nearing completion. Cambridge Quarter (Fletchers) and Manchester Square (Williams Corporation) will be the next developments underway.
- **Performing Arts Precinct**— Hawkins has been appointed as the main contractor to build The Court Theatre. Early groundworks have been completed and site works have started. It is expected the new Court Theatre will open in 2024.
- **Cathedral Square repair and upgrade**— contractors have been re-levelling and re-laying paving outside the former Post Office building. Additional lighting and landscaping will be added to this area.
- **Christ Church Cathedral**— The stabilisation phase is nearly complete. The next stage will be strengthening the main building structure.
- **Citizens' War Memorial**—the reinstatement of Christchurch's historic Citizens' War Memorial is well underway with the cross re-established.
- **High Street developments:** Good momentum can be seen along High Street with two significant corners now progressing through the consenting process:
 - **170 Cashel Street (Cashel/High corner)**—resource consent has been approved for a new four-storey retail and office building.
 - **211 High Street**— resource consent has been approved and building consent is currently being processed for a four-storey mixed-use development with office, retail and food and beverage offerings.
- **33 Cathedral Square**— Site works are underway in preparation for a four-storey mixed-use office and retail building.



Activity	Who	When
Major Public Facilities , Spaces and Buildings		
Parakiore Recreation and Sport Centre	Ōtākaro Ltd	Summer 2024/25
Performing Arts Precinct	Court Theatre Christchurch School of Music	2024 TBC
Te Kaha/ Canterbury Arena	CCC / Kōtui Consortium	Autumn 2026 (provisionally)
Christ Church Cathedral	Christ Church Cathedral Reinstatement Limited	Early 2028
Cathedral Square repair and upgrade	CCC	Ongoing
Selected Commercial/Attraction Projects		
Old Post Office—"The Grand"	G Chamberlain / Darin Rainbird	Early 2023
Catholic Cathedral / Precinct	Catholic Church/Carter Group	Expect to commence 2023
Regent Site (33 Cathedral Sq.)	Carter Group	Autumn 2024
Former Holiday Inn (170 Cashel St)	Carter Group	Spring 2024
Former Convention Centre site	Peebles / Mike Greer / Blackcomb Property	TBC
Madras Square	Peebles Group and Mike Greer Group	TBC
Convention Centre Hotel Developments	Carter Group	TBC

(Dates above are based on direct or best available sources.)

9. Biodiversity Fund applications to protect and enhance indigenous biodiversity on private land

Reference / Te Tohutoro: 22/1702052

Report of / Te Pou Matua:	Nicholas Head, Senior Ecologist, Nicholas.Head@ccc.govt.nz Antony Shadbolt, Team Leader Biodiversity. Antony.shadbolt@ccc.govt.nz
General Manager / Pouwhakarae:	Lynn McClelland, Assistant Chief Executive Strategic Policy and Performance (lynn.mcclelland@ccc.govt.nz)

1. Nature of Decision or Issue and Report Origin

- 1.1 This report provides summary information on applications that meet criteria to qualify for biodiversity funding to protect and enhance significant indigenous biodiversity on private land.
- 1.2 Biodiversity funding supports Council's statutory obligations to protect significant indigenous biodiversity on private land.
- 1.3 The decisions in this report are of low significance in relation to the Christchurch City Council's Significance and Engagement Policy. This is because the decision affects a small number of people (the applicants), and the impact is positive for both the applicants and the environment; the decision allocates funding already provided for in the Long Term Plan 2018-2028.

2. Officer Recommendations Ngā Tūtohu

That the Council:

1. Receive the information in the report on applications that meet the criteria to qualify for biodiversity funding.
2. Approve full funding from the Christchurch Biodiversity Fund 2021/22 for the nine projects as outlined in 5.6 of this report.

3. Reason for Report Recommendations Ngā Take mō te Whakatau

- 3.1 All projects recommended for support meet fund criteria, are ready for immediate implementation, and have access to co-funding where this is required for success.

4. Alternative Options Considered Ētahi atu Kōwhiringa

- 4.1 Alternative options are not to fund, or not fully fund these projects. As the Biodiversity Fund (the Fund) is allocated specifically to assist private landowners to protect and enhance indigenous biodiversity and the applications received achieve this, these options were discounted.

5. Detail Te Whakamahuki

- 5.1 The Fund supports custodians of biodiversity working to protect ecologically significant sites. Council provides up to 50% of funding (maximum of \$60,000 per individual

project/property per year), for eligible projects on private land. Up to \$400,000 is available for allocation this year.

- 5.2 The Fund is an opportunity to support private landowners who are taking voluntary action, and investing their own time and money, to protect and enhance biodiversity on their properties. The projects provide real protection for biodiversity in the Christchurch District through direct action.
- 5.3 The community is very supportive of the Council contributing funds to assist with conservation of private land. Several submissions were made by community groups and individuals to the Long Term Plan 2021-2031 requesting that Council increase the annual allocation to the Biodiversity Fund. As a result the Fund was increased to \$400,000 - an outcome consistent with the Council declaring an ecological and climate emergency.

2023 Funding Applications

- 5.4 The recommendation for this 2022-2023 round of funding would allocate a total of **\$345,550** across nine projects. This contribution, together with applicant-matched funding and funding from other contributions, totals an overall investment of **\$916,040** in projects that protect and enhance our local biodiversity.
- 5.5 This would leave **\$54,450** remaining in the fund for the remainder of the 2022 – 2023 financial year. The remainder of the Fund is available for allocation in a second funding round, expected to conclude in June 2023.
- 5.6 Biodiversity funding bids for this round of the 2022/23 financial year are outlined in the table below:

Project Name	Owners	Work	Amount requested	Landowner contributions	Other contributions	Total Cost of Project
Coastal Forest Protection and Enhancement - Foggy Gully Covenant	Bill Osborne; Darryl and Jenny Pringle	Fencing	\$41,000	\$36,400	\$4,600	\$82,000
Matai Forest Protection and Enhancement - Kapūa Covenant	Lorna Buchanan	Predator control	\$25,000	\$22,120	\$3100	\$50,220
Forest Protection - Head of the Harbour New Covenant	Rural Vision Ltd, Tom Magill	Fencing	\$59,850	\$33,050	\$39,300	\$132,200
Coastal Forest Protection Tikao Bay New Covenant	Williams and Smaill	Fencing, weed control	\$52,840	\$79,750	\$26,420 (Ecan) \$12,000 (BPCT)	\$171,010
High Bare Peak - New Covenant Protection and Enhancement	High Bare Peak Ltd	Fencing	\$58,250	\$33,375	\$83,475	\$175,100
Rare Ecosystem Protection, Summit Road Society Reserves	Summit Road Society	Weed control	\$5000	\$5000		\$10,000
Rare Ecosystem Protection, Mt	Hidden Valley Conservation Trust	Weed control	\$11,500	\$9,600	ECan expected but contribution	\$21,100

Evans/ Purau Catchment					yet to be confirmed	
Penguin Conservation, Flea Bay	Helps Pōhutu Conservation Trust	Predator Control	\$32,110	\$49,850		\$81,960
Ecosystem protection and enhancement, Wairewa and Te Waihora Catchments, Pig control (Phase 2)	Multiple land owners	Pest control	\$60,000	\$69,000	\$63,450	\$192,450
Total			\$345,550	\$338,145	\$232,345	\$916,040

5.7 The decision affects the following wards/Community Board areas:

- Te Pataka o Rakaihautu Banks Peninsula
- Waipuna Halswell-Hornby-Riccarton
- Waihoru Spreydon-Cashmere-Heathcote

Update on Previously-Funded Projects

- 5.8 Since the fund was established in 2017, a total of \$1,255,871 has been allocated to 59 projects (excluding the current applications). 56 of these projects are complete, with three still in progress.
- 5.9 Most previous projects involved fencing (40 projects). Restoration planting (12 projects), pest plant control (14 projects), and pest mammal control (6 projects) are other activities that have been supported. Some projects involve multiple activities.
- 5.10 Over 1300 hectares of ecologically significant vegetation has been protected, along with the indigenous fauna that live in those habitats. Many projects have also protected streams and important waterways.

6. Policy Framework Implications Ngā Hīraunga ā- Kaupapa here

Strategic Alignment Te Rautaki Tīaroaro

- 6.1 The programme aligns with the strategic framework supporting principle of “taking an inter-generational approach to sustainable development prioritising the social, economic and cultural well-being of people and communities and the quality of the environment, now and into the future,” by supporting individual landowners to protect and enhance biodiversity on private land.
- 6.2 The programme also aligns with the strategic framework supporting principle of “actively collaborating and co-operating with other local, regional and national organisations.” We work with Environment Canterbury and covenanting agencies to ensure that projects have adequate support and that our combined resources are efficiently allocated.
- 6.3 This report supports the [Council's Long Term Plan \(2021 - 2031\)](#):
- 6.3.1 Activity: Strategic Planning, Future Development and Regeneration

- Level of Service: 1.4.2 Effectively administer grants within this Activity (including Heritage Incentive Grants, Enliven Places, Innovation and Sustainability) - 100% compliance with agreed management and administration procedures for grants

Policy Consistency Te Whai Kaupapa here

- 6.4 The decision is consistent with Council's Plans and Policies.
- 6.5 The programme aligns with District Plan policies regarding the protection of ecologically significant sites, and the provision of advice and incentives for landowners who wish to do this on private property.
- 6.6 The programme supports the goals of the Council's Biodiversity Strategy.

Impact on Mana Whenua Ngā Whai Take Mana Whenua

- 6.7 The decision does not involve a significant decision in relation to ancestral land or a body of water, but does involve indigenous species and ecosystems that have intrinsic values. Therefore this decision does impact Mana Whenua, their culture and traditions. Staff note, however, that the intent of all projects is to have a positive impact on indigenous biodiversity.
- 6.8 While matters of indigenous biodiversity are of interest to Mana Whenua, this specific decision to allocate funding to enhance biodiversity will not impact our agreed partnership priorities with Ngā Papatipu Rūnanga

Climate Change Impact Considerations Ngā Whai Whakaaro mā te Āhuarangi

- 6.9 Most of the projects provide protection to regenerating forest habitats, which will boost the carbon sequestration capacity of these areas. Protecting and enhancing the ecological health of sites will improve the resilience of the District's habitats and species within them to the impacts of climate change.

Accessibility Considerations Ngā Whai Whakaaro mā te Hunga Hauā

- 6.10 All the applications subject to grant approval occur on protected private land, accessibility considerations are beyond the scope of issues to consider in this decision.

7. Resource Implications Ngā Hīraunga Rauemi

Capex/Opex Ngā Utu Whakahaere

- 7.1 Cost to Implement - none other than staff time to administer the fund.
- 7.2 Maintenance/Ongoing costs - none other than staff time to administer the fund.
- 7.3 Funding Source - the Fund is provided for in the 2021-2031 Long Term Plan.

Other He mea anō

- 7.4 Considerable checks and balances are in place to ensure the funding granted to projects is spent in accordance with the project plan and meets expectations, including progress reports, proof of completions and inspections if necessary. Staff time in relation to this is an inherent part of overseeing the fund.

8. Legal Implications Ngā Hīraunga ā-Ture

Statutory power to undertake proposals in the report Te Manatū Whakahaere Kaupapa

- 8.1 The Council has the delegation to consider applications to the Biodiversity Fund.

Other Legal Implications Ētahi atu Hīraunga-ā-Ture

- 8.2 There is no adverse legal context, issue or implication relevant to this decision.

9. Risk Management Implications Ngā Hīraunga Tūraru

- 9.1 There are no significant risks associated with allocating funds to the projects as outlined. Processes are in place to ensure funding granted is spent in accordance with the project plans and expectations.

Attachments Ngā Tāpirihanga

No.	Title	Reference	Page
A ↓	Christchurch Biodiversity fund project descriptions for 2022/2023	23/22668	46

In addition to the attached documents, the following background information is available:

Document Name – Location / File Link
Not applicable

Confirmation of Statutory Compliance Te Whakatūturutanga ā-Ture

Compliance with Statutory Decision-making Requirements (ss 76 - 81 Local Government Act 2002).

(a) This report contains:

- (i) sufficient information about all reasonably practicable options identified and assessed in terms of their advantages and disadvantages; and
- (ii) adequate consideration of the views and preferences of affected and interested persons bearing in mind any proposed or previous community engagement.

(b) The information reflects the level of significance of the matters covered by the report, as determined in accordance with the Council's significance and engagement policy.

Signatories Ngā Kaiwaitohu

Authors	Nicholas Head - Senior Ecologist Antony Shadbolt - Team Leader Biodiversity
Approved By	David Griffiths - Head of Strategic Policy & Resilience Lynn McClelland - Assistant Chief Executive Strategic Policy and Performance

5/11/2022

Christchurch Biodiversity Fund 2022/2023

Project Descriptions

Head, Nicholas
CHRISTCHURCH CITY COUNCIL

Item 9

Attachment A

Contents

Coastal Forest Protection and Enhancement - Foggy Gully Covenant	2
Matai Forest Protection and Enhancement - Kapūa Covenant.....	4
Forest Protection – Head of the Harbour New Covenant.....	6
Coastal Forest Protection – Tikao Bay New Covenant.....	9
High Bare Peak – New Covenant Protection and Enhancement.....	11
Rare Ecosystem Protection - Summit Road Society Reserves.....	14
Rare Ecosystem Protection, Mt Evans/ Purau Catchment.....	16
Penguin Conservation, Flea Bay	18
Ecosystem Protection and Enhancement, Wairewa and Te Waihora Catchments - Feral Pig Control (Phase 2)	20

Trim reference to full application details: Biodiversity fund applications 2023, FOLDER 17/3004;
Record number 23/22394

Coastal Forest Protection and Enhancement - Foggy Gully Covenant

Applicant: QEII Conservation Trust

Owner: Bill Osborne

Protection: QEII covenant

Amount requested: \$41,000.00

This project is for fencing to exclude cattle from Foggy Gully. Foggy Gully supports impressive remnants of low altitude/coastal mixed podocarp/hardwood forest. These forest types are among the rarest on the Peninsula. They provide important habitats for native bush birds, and it plays an important role in buffering the local stream and Nikau Valley Scenic Reserve.

Hugh Wilson recommended the protection of Foggy Valley from his ecological survey of Banks Peninsula – “RAP 16 Nikau” (Wilson H.D. 1992. Banks Ecological Region Survey Report for the New Zealand Protected Natural Areas Programme. Survey report 21. Department of Conservation, Christchurch).

Foggy Valley’s ecological values also meet at least two of the national priorities for the protection of indigenous biodiversity on private land, but likely more given full ecological assessment.

National Priority 1: The site falls within a chronically threatened land environment with less than 20% indigenous cover left nationally.

National Priority 4: Protection of habitats of threatened indigenous species: Threatened: Nationally Critical – *Korthalsella salicornioides*. Nationally Vulnerable - *Metrosideros diffusa*. At Risk-Declining - *Brachyglottis scaidiophila*, *Coprosma virescens*. At Risk-Naturally Uncommon

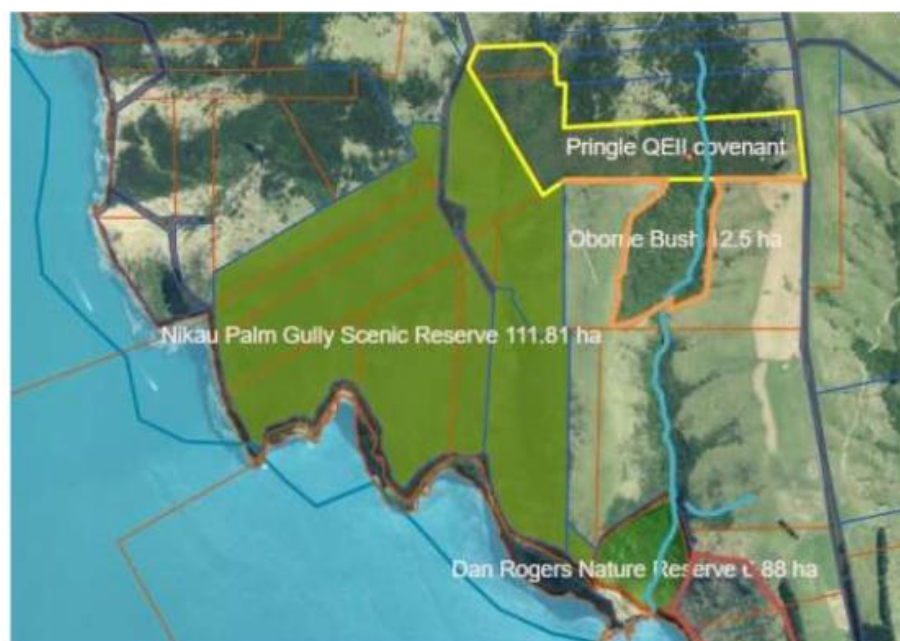


Photo above: Covenant area



Photos above: mixed hardwood podocarp forest

Matai Forest Protection and Enhancement - Kapūa Covenant

Applicant and Owner: Lorna Buchanan

Protection: Protected under Banks Peninsula Trust Covenant

Amount requested: \$25,000.00

This is project to protect and enhance the ecological values by undertaking pest control in the exceptional remnant of old growth podocarp forest known as Kapūa.

Kapūa is a fine example of old growth podocarp forest remaining on mid-altitudes of Banks Peninsula. It is of great importance for being an extremely rare forest type. Less than 1% remains of the original (pre-human) forest cover on Banks Peninsula. Kapūa was recommended for protection by Hugh Wilson from his ecological survey of Banks Peninsula – “RAP 23 Kererū”. (Wilson H.D. 1992. Banks Ecological Region Survey Report for the New Zealand Protected Natural Areas Programme. Survey report 21. Department of Conservation, Christchurch).

Kapūa is especially notable for the presence of many matai, totara and kahikatea that are estimated to be up to 600 years old. There is also a high diversity of hardwood trees, shrubs, ferns, herbs that occur in proportions that reflect the ecosystems original composition. Animal pests and weeds threatened the integrity of the site and require constant attention.

Kapūa meets at least two of the national priorities for the protection of indigenous biodiversity on private land, but likely more given full ecological assessment.

National Priority 1: The site falls within a chronically threatened land environment with less than 20% indigenous cover left nationally.

National Priority 4: Protection of habitats of threatened indigenous species. Nationally Vulnerable: *Metrosideros diffusa*. At Risk-Declining: *Brachyglottis scaidiophila*, *Coprosma virescens*, jewelled gecko (*Naultinus gemmeus*).





Forest Protection – Head of the Harbour New Covenant

Applicant: QEII Conservation Trust

Owner: Tom Magill (Rural Vision Limited)

Protection: Protected as QEII covenant

Amount requested: \$59,850.00

This project is for fencing 3 areas of forest to exclude stock from a new QEII covenant behind Teddington, in what is known as the “head of the harbour” catchment. The area to be protected covers 56ha.

The forest is primarily comprises a diversity of second growth hardwood species. Kanuka is the predominant species that has spread through open areas of exotic grassland previously grazed by stock. Remnants of mature forest remain in gullies that are highly representative of low altitude ‘dry’ forests composition. They provide important habitats for native bush birds, and they have an important role in buffering several streams that drain into the harbour.

Low altitude forests are among the rarest on the Peninsula, being on land most suitable for farming, and as such they are classified as a nationally threatened ecosystem.

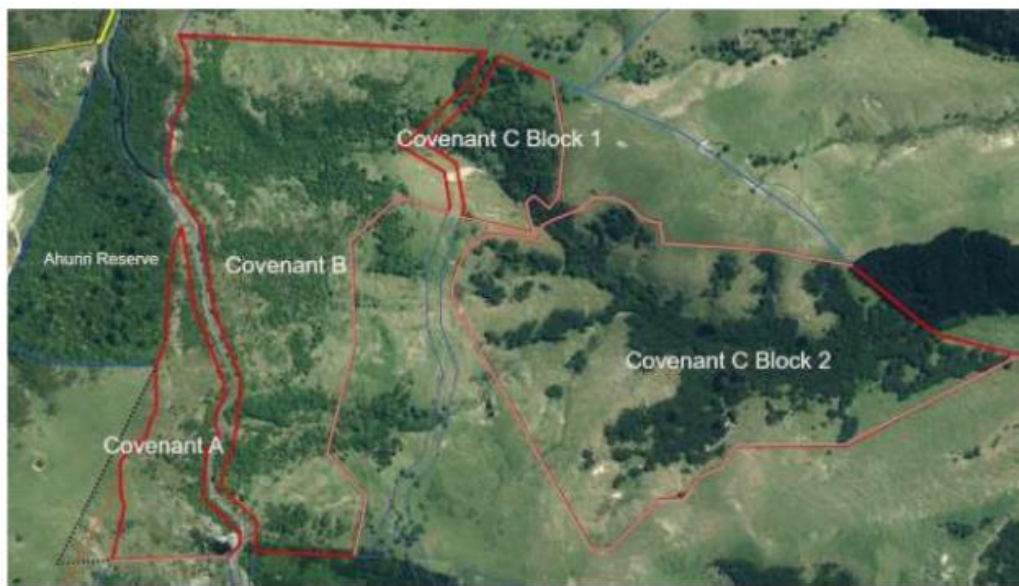
These forest contain ecological values that meets all 4 the national priorities for the protection of indigenous biodiversity on private land.

National Priority 1: contains representative plant communities that occur on acutely and chronically threatened land environments;

National Priority 2: springs, seeps, narrow riparian strips along streams are present with characteristic wetland plants;

National Priority 3: Volcanic “basic” cliffs, scarps and tors are classified as naturally rare ecosystems;

National Priority 4: contains Threatened and At-Risk species including; *Hebe lavaudiana*, *Coprosma virescens*, *Senecio matatini ssp basinudus*, *Juncus distegis*.





Coastal Forest Protection – Tikao Bay New Covenant

Applicant: Banks Peninsula Conservation Trust

Owner: Tom Williams and family and Hannah Smaill. Tiako Conservation Trust

Protection: Protected as BPCT covenant

Amount requested: \$52,840.00

This project is for fencing a ~16ha area proposed for a BPCT covenant. The proposed area comprises second growth coastal forest surrounding the settlement at Tikao Bay. Fencing will exclude stock from the forest allowing for ecological recovery and regeneration to occur. Pest control has been undertaken together with the local community for the past 6 years led by the landowners, and they have carried out weed control as well.

Coastal forests are very rare nationally, and as such they are classified as threatened ecosystems. The forest is dominated by kanuka. A greater diversity of tree species is present in the older parts of the bush, typically adjoining stream margins. Species commonly present include mahoe, kohuhu, ngaio, kowhai and cabbage trees, lowland lacebark, tree daisy and rohutu (*Lophomyrtus obcordata*) (Threatened - Nationally Critical). An occasional large totara and young matai are present. Shrublands present comprise *Helichrysum lanceolatum*, *Coprosma rhamnoides*, common broom, and vines including *Scandia geniculata* and *Chenopodium allanii* (At Risk – Naturally Uncommon) that are indicative of coastal ecosystems. Once protected/fenced, the area of forest is expected also to expand considerably in size as it will regenerate into open grassy areas that form considerable parts of the proposed covenant area.

An area of wetland is present within the proposed covenant area that supports large *Carex secta* and other native wetland species that are highly representative of the original composition. Wetlands are also classified as nationally threatened ecosystems owing to widespread loss nationwide. The site also includes a stream that is an important waterway and will be protected by the covenant being established.

This covenant encompasses both sides of the road into Tikao Bay settlement so can be enjoyed by the residents who live or have bachs there, plus rural and urban visitors to the area. In addition to preserving and enhancing ecological values the covenant will protect the stunning landscape values by preventing any further building, and also act as an excellent catalyst for further protections in the area, whilst educating and inspiring people.

The area contains ecological values that meets 3 the national priorities for the protection of indigenous biodiversity on private land.

National Priority 1: contains representative plant communities that occur on acutely and chronically threatened land environments;

National Priority 2: wetlands, springs, seeps, and riparian strips along streams are present that support native wetland plants;

National Priority 4: contains threatened and at-risk species including; rohutu and *Chenopodium allanii*.



High Bare Peak – New Covenant Protection and Enhancement

Applicant: Miles Giller, QEII National Trust

Owners: High Bare Peak Limited

Protection: QEII covenants

Amount requested: \$58,250.00

High Bare Peak (~400ha) was recently purchased by a consortium of conservation minded people to protect ecological values and facilitate ecological recovery through promoting forest regeneration.

High Bare Peak encompasses dry coastal forest, podocarp forest, mixed hardwood forest, shrublands, tussock grasslands, rugged bluffs. It forms a major part of the catchment to Lake Forsyth and connection to adjoining areas of protected private land.

Hugh Wilson recommended the protection of High Peak from his ecological survey of Banks Peninsula – “RAP 14 High Bare Peak”. (Wilson H.D. 1992. Banks Ecological Region Survey Report for the New Zealand Protected Natural Areas Programme. Survey report 21. Department of Conservation, Christchurch).

The intent of this project is to:

1. To legally protect 282 hectares with a QEII National Trust covenant.
2. To erect 5,225 metres of fencing (including 4,325 metres of new fencing and 900 metres of upgrade fencing) to fence stock out of 282 hectares, in three blocks
3. To exclude stock (sheep and cattle), and suppress wild animals (deer, goats, pigs, possums) to promote regeneration of the forest.
4. To improve the water quality and in stream habitat in Catons Bay stream and the seasonal spring streams that flow down channels in the lower slopes, including the reduction of silt washing into Wairewa Lake Forsyth.
5. To sequester carbon in existing and new native vegetation.

High Bare Peak has multiple ecological values that meets all 4 of the national priorities for the protection of indigenous biodiversity on private land.

National Priority 1: contains representative plant communities that occur on acutely and chronically threatened land environments;

National Priority 2: springs, seeps, narrow riparian strips along streams are present with characteristic wetland plants;

National Priority 3: Fine examples of basic cliffs, scarps and tors are classified as naturally rare ecosystems;

National Priority 4: contains Threatened and At-Risk species including: Nationally Vulnerable = rohutu (*Lophomyrtus obcordata*). At Risk-Declining (DOC, 2017): *Aciphylla subflabellata*, *Coprosma*

virescens, *Coprosma wallii*, *Discaria toumatou*, *Leptinella serrulata*, *Linum monogynum*, *Teucrium parvifolium*, *Carex cyanea*, New Zealand pipit (*Anthus novaeseelandiae novaeseelandiae*). At Risk-Naturally Uncommon (DOC, 2017): *Chenopodium allanii*, *Festuca actae*, *Juncus distegus*, *Leptinella minor*, *Myosotis spatulata*, *Hebe strictissima*, *Pseudopanax ferox*, *Senecio glaucophyllus* subsp. *basinudus*.





The Mānatu proposed covenant is a well-grazed treeland of mānatu, houhī and kōwhai. Fencing out stock will enable young tree to establish.

Rare Ecosystem Protection - Summit Road Society Reserves

Owner: Summit Road Society

Protection: Protected under Reserves Act

Amount requested: \$5000.00

Biodiversity funding applied for is to protect and enhance indigenous biodiversity through undertaking weed control on naturally rare volcanic bluff ecosystems in Summit Road Society reserves (SRS). This is a continuation of an earlier biodiversity grant to control spur valerian on bluffs in SRS reserves that is needed to secure and build on the gains made from the initial grant.

SRS reserves have extensive volcanic bluff that support some of the finest examples of dry shrublands remaining in the Port Hills ecological district. They also provide habitats for several nationally threatened species and species that are uncommon nationally, ranked as At Risk by the New Zealand threat classification system.

The protection of habitats for threatened indigenous species is also a national priority (4). Those present include Banks Peninsula forget-me-not (*Myosotis lytteltonensis*), Banks Peninsula sun-hebe (*Veronica lavaudiana*), grassy sedge (*Carex inopinata*), grassland Spaniard (*Aciphylla subflabellata*), *Linum monogynum*, Banks Peninsula fescue tussock (*Festuca actae*), Banks Peninsula hebe (*Veronica strictissima*), Banks Peninsula bachelor's button (*Leptinella minor*).

Spur valerian is one of the worst threats to the diversity of native species that occur on volcanic bluffs. This weed forms dense thickets that displaces much of the natural low growing vegetation and alters habitat for native fauna. The SRS is on year three on a six-year plan to contain spur valerian in the Faulkner Bluffs. This work will also help to prevent the spread of this weed further across the Peninsula. In addition to spur valerian, other weeds will also be controlled as a matter of course.

Funding is sought for specialist abseil and ground control in difficult terrain. SRS volunteers will undertake spur valerian control in accessible areas.



Photo above: volcanic bluff habitat important for rare plant species



Photo above: spur valerian invading volcanic bluffs

Rare Ecosystem Protection, Mt Evans/ Purau Catchment

Owner: Hidden Valley Conservation Trust

Protection: QEII covenant, SES H29

Amount requested: \$11,500.00

The seventy-two hectares on Mt Evans at Purau, recently purchased by the Hidden Valley Conservation Trust, has been long recognised as a top priority for protection for its high natural, cultural and landscape values. It comprises excellent examples of remnant old growth and regenerating podocarp/hardwood forest on dry aspects that is a nationally rare forest type. It includes extensive bluff ecosystems that collectively support 31 rare and threatened native species.

It was purchased by the trust to restore nature over multi-generations. Funding right now will accelerate the rate of change from farming to conservation to benefit biodiversity. A grant will build on the recent weed control efforts for spur valerian that is emerging as one of the worst weeds to bluff ecosystems on the Peninsula.

The site contains values that meets three national priorities for the protection of indigenous biodiversity on private land:

National Priority 1: contains representative plant communities that occur on threatened land environments;

National Priority 3: volcanic tallus, cliffs and bluffs are classified as naturally rare ecosystems;

National Priority 4: contains numerous nationally Threatened and At-Risk species, incl. *Gingidia ensyii* var *peninsulare*, *Mysotis lytteltonensis*, *Linum monogynum*, *Festuca actae*, *Anogramma leptophylla*, *Veronica lavaudiana*, *Veronica strictissima*, *Brachyglottis lagopus*, *Asplenium trichomanes*, *Raoulia monroi*.



Photo above: location of Hidden Valley



Penguin Conservation, Flea Bay

Owner: The Helps Conservation Trust

Protection: QEII covenant

Amount requested: \$32,110.00

The project is to protect the largest Korora/Little penguin colony on mainland New Zealand that occurs at Pohatu/Flea Bay. Pohatu's penguin colony consists of largely the white-flipper penguin, which is endemic to Canterbury. Little blue penguins and hoiho/Yellow-eyed penguins also are known to have breed at this site.

This funding will support important pest control (and monitoring) to keep predator numbers low, especially focusing on feral cats and mustelids. It builds on initial grant funding in 2021 that maintained predator control during covid and related loss of tourism income. It is very important that predator control continues to safeguard to gains made to penguin conservation on Banks Peninsula from such a long running commitment to their conservation.

Meets National Priority 4: for the protection of indigenous biodiversity on private land:



Photo above: penguin habitat area



Photo above: white flipper penguins



Photo above: white flipper penguin burrow

Ecosystem Protection and Enhancement, Wairewa and Te Waihora Catchments - Feral Pig Control (Phase 2)

Owner: Banks Peninsula Conservation Trust

Protection: Numerous covenants and reserves

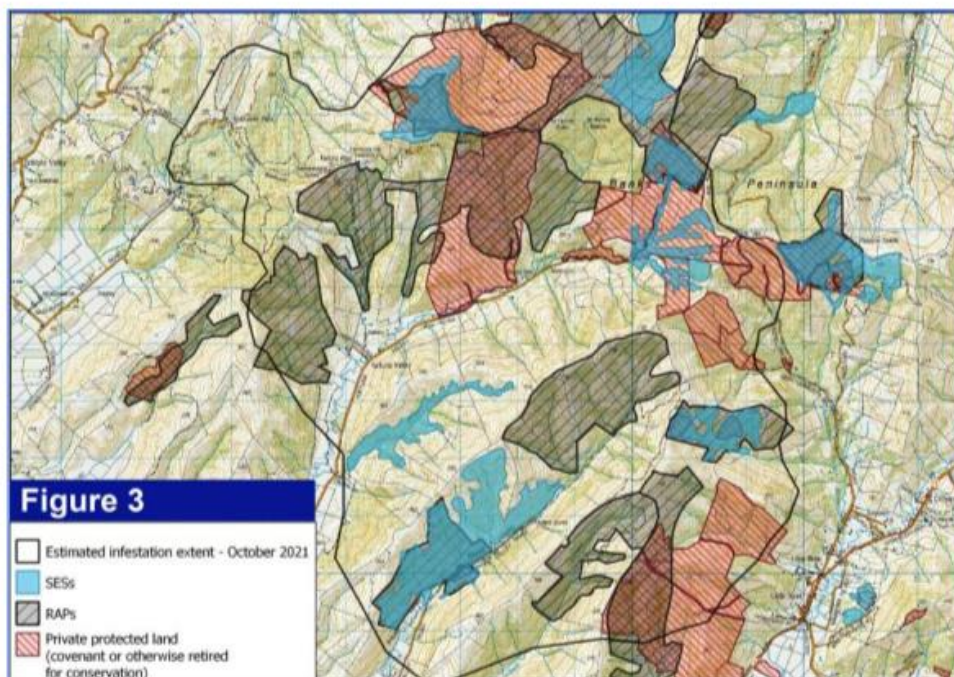
Amount requested: \$60,000.00

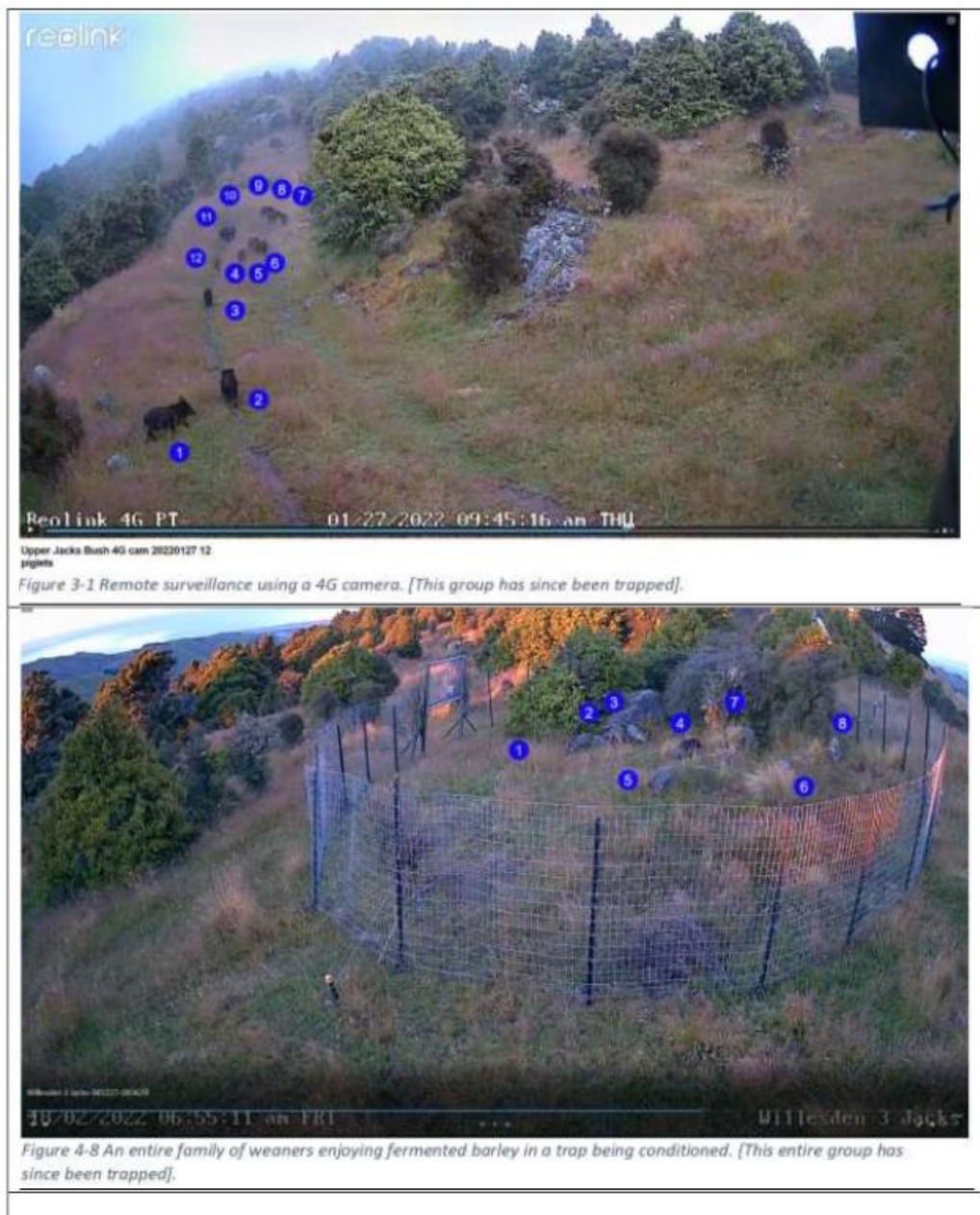
This project is for feral pig control across multiple properties and landowners. Feral pigs have recently emerged as a major threat on the Peninsula. They were rapidly spreading from where they were illegally liberated in the Te Waihora catchment until funding was allocated to halt their spread.

The arrival and spread of feral pigs is a disaster for Banks Peninsula's natural environment and its indigenous biodiversity. Feral pigs are considered to be one of the world's worst invasive animals for the devastating impact they have on indigenous biodiversity, eating all life forms (plants, invertebrates and vertebrates). Furthermore, ground disturbance caused by pig rooting is a major source of weed invasion and spread.

This project will set secure the gains made from previous funding and control efforts, and expand systematic control plan to remove feral pigs from the Te Waihora catchment. Through the knowledge gained, this funding underpins future efforts to eventually eradicate feral pigs from the Peninsula. It comes on the back of considerable effort already undertaken by dedicated individuals to understand the extent of the problem and trial effective methods of control that will work to remove feral pigs.

The project area is large, covering many thousands of hectares that includes numerous protected significant ecological sites and conservation reserves that will benefit directly from feral pig control. As important is preventing the further spread of feral pigs beyond where they currently roam. Feral pigs have yet to invade the Akaroa harbour catchment, nor the southern bays, that supports many habitats and species that are especially vulnerable to feral pigs, such as little blue penguin colonies that could readily be devastated by even a single pig.





10. Triennial Agreement between Local Authorities in the Canterbury Region

Reference / Te Tohutoro: 22/1641198

Report of / Te Pou
Matua: Phil Mauger, Mayor

General Manager /
Pouwhakarae: Lynn McClelland, Assistant Chief Executive Strategic Policy and Performance (lynn.mcclelland@ccc.govt.nz)

1. Nature of Decision or Issue and Report Origin

- 1.1 The purpose of the report is for the Council to approve entering the Canterbury Local Authorities' Triennial Agreement 2022-2025 by 1 March 2023, as adopted by the Canterbury Mayoral Forum on 25 November 2022.
- 1.2 Section 15 of the Local Government Act 2002 (the Act) requires local authorities within a regional council area to enter into a Triennial Agreement by 1 March following triennial local body elections.
- 1.3 The decision in this report is of low significance in relation to the Christchurch City Council's Significance and Engagement Policy. The level of significance was determined by the legislative requirement to enter into a Triennial Agreement

2. Officer Recommendations Ngā Tūtohu

That the Council:

1. Approve entering the Canterbury Local Authorities' Triennial Agreement 2022-2025; and
2. Approve the Mayor signing the Canterbury Local Authorities' Triennial Agreement 2022-2025 on behalf of the Council.

3. Background Te Horopaki

- 3.1 Section 15 of the Local Government Act 2002 (the Act) requires all local authorities within a regional council area to enter into a Triennial Agreement (the Agreement) by 1 March following each triennial local government election.
- 3.2 The purpose of the Agreement is to ensure that appropriate levels of communication, co-ordination and collaboration are maintained between local authorities within the region.
- 3.3 The Agreement must include:
 - 3.3.1 protocols for communication and co-ordination between councils,
 - 3.3.2 the process by which councils will comply with section 16 of the Act, which applies to significant new activities proposed by regional councils, and
 - 3.3.3 processes and protocols through which all councils can participate in identifying, delivering and funding facilities and services of significance to more than one district.
- 3.4 The Agreement may be varied after ratification if agreed by all the local authorities within the region, and remains in force until local authorities ratify a new agreement.

- 3.5 The Canterbury Mayoral Forum is the key mechanism to implement the Agreement and it comprises the mayors of the ten territorial authorities in Canterbury and the Chairman of the Canterbury Regional Council. The Agreement mandates the Mayoral Forum, Chief Executives' Forum and other regional bodies and working groups.

4. Detail Te Whakamahuki

- 4.1 The 2022-2025 Canterbury Mayoral Forum adopted the 2022-2025 Agreement (**Attachment A**) at its meeting on 25 November 2022. Once each local authority in Canterbury has agreed to enter the Agreement, then it will replace the current 2020-2022 Triennial Agreement.
- 4.2 The Agreement does not differ substantively from the current 2020-2022 Triennial Agreement which was adopted by Council on 19 December 2019.
- 4.3 The draft Agreement:
- 4.3.1 sets out a commitment by all local authorities in Canterbury to keep each other informed about matters with cross-boundary implications; and
 - 4.3.2 outlines the roles for the Canterbury Mayoral Forum and Chief Executives' Forum.
- 4.4 The draft Agreement does not preclude local authorities from entering into other agreements among themselves, or outside their region, to facilitate their responsibilities.

5. Next Steps

- 5.1 To give effect to the Agreement, all 11 local authorities listed in the Agreement must enter into it before 1 March 2023 as required by the Act. When all councils have ratified the Agreement, the secretariat will publish it on the Canterbury Mayoral Forum website:
<https://canterburymayors.org.nz/>

6. Policy Framework Implications Ngā Hiraunga ā- Kaupapa here

Strategic Alignment Te Rautaki Tīaroaro

- 6.1 This report supports the Council's Strategic Framework, specifically the principle of "*Actively collaborating and co-operating with other local, regional and national organisations*" by recommending entry into a framework for regional communication and collaboration between local authorities.
- 6.2 This report supports the [Council's Long Term Plan \(2021 - 2031\)](#):
- 6.2.1 Activity: Strategic Planning, Future Development and Regeneration
 - Level of Service: 17.0.1.1 Advice to Council on high priority policy and planning issues that affect the City. Advice is aligned with and delivers on the governance expectations as evidenced through the Council Strategic Framework. - Triennial reconfirmation of the strategic framework or as required.

Policy Consistency Te Whai Kaupapa here

- 6.3 The decision is consistent with Council's Plans and Policies as the Agreement has no substantive changes to the current 2020-2022 Triennial Agreement entered into during the previous Council term.

Impact on Mana Whenua Ngā Whai Take Mana Whenua

- 6.4 The recommendation does not involve a significant decision in relation to ancestral land or a body of water or other elements of intrinsic value, therefore this decision does not specifically impact Mana Whenua, their culture and traditions.

- 6.5 The Canterbury Mayoral Forum seeks to include Mana Whenua when implementing the Agreement. The Mayoral Forum terms of reference include hosting two meetings each year with the chairs of the Papatipu Rūnanga, providing an opportunity for Mana Whenua to be kept informed of, and share their views with, the Mayoral Forum members. The Mayoral Forum has also issued a standing invitation to the Kaiwhakahaere or other representative/s of Te Rūnanga o Ngāi Tahu to attend and participate in meetings of the Forum if they chose to.

Climate Change Impact Considerations Ngā Whai Whakaaro mā te Āhuarangi

- 6.6 The Agreement does not directly impact on the Council nor Christchurch City's ability to adapt to climate change and reduce emissions. However, the Canterbury Mayoral Forum established under the Agreement provides the potential for regional bodies or working groups to be formed which could focus on undertaking regional or sub regional actions to adapt to climate change or reduce emissions.

Accessibility Considerations Ngā Whai Whakaaro mā te Hunga Hauā

- 6.7 There are no accessibility considerations.

7. Resource Implications Ngā Hīraunga Rauemi

Capex/Opex Ngā Utu Whakahaere

- 7.1 Cost to Implement – None
- 7.2 Ongoing costs - The Canterbury Mayoral Forum has the power to levy members to cover the cost of its operation. Christchurch City Council pays an annual levy of \$12,907.
- 7.3 Funding Source – This is funded from existing operational budgets.

Other He mea anō

- 7.4 None

8. Legal Implications Ngā Hīraunga ā-Ture

Statutory power to undertake proposals in the report Te Manatū Whakahaere Kaupapa

- 8.1 Section 15 of the Local Government Act 2002 requires that all local authorities enter into a Triennial Agreement as proposed in this report by 1 March in the year following triennial elections.

Other Legal Implications Ētahi atu Hīraunga-ā-Ture

- 8.2 There is no legal context, issue or implication relevant to this decision.

9. Risk Management Implications Ngā Hīraunga Tūraru

- 9.1 This decision is low risk because the recommendation is consistent with current practice.

Attachments Ngā Tāpirihanga

No.	Title	Reference	Page
A ↓	Canterbury Local Authorities' Triennial Agreement 2022-25	23/76612	75

In addition to the attached documents, the following background information is available:

Document Name – Location / File Link
Not applicable

Confirmation of Statutory Compliance Te Whakatūtutanga ā-Ture

Compliance with Statutory Decision-making Requirements (ss 76 - 81 Local Government Act 2002).

(a) This report contains:

- (i) sufficient information about all reasonably practicable options identified and assessed in terms of their advantages and disadvantages; and
- (ii) adequate consideration of the views and preferences of affected and interested persons bearing in mind any proposed or previous community engagement.

(b) The information reflects the level of significance of the matters covered by the report, as determined in accordance with the Council's significance and engagement policy.

Signatories Ngā Kaiwaitohu

Author	Boyd Becker - Principal Mayoral Advisor
Approved By	Jonathan King - Head of Office of Mayor & Chief Executive Lynn McClelland - Assistant Chief Executive Strategic Policy and Performance

Canterbury Local Authorities' Triennial Agreement 2022–25

Background

1. Section 15 of the Local Government Act 2002 (the Act) requires local authorities within a regional council area to enter into a Triennial Agreement (the Agreement) by 1 March following triennial local body elections.
2. The purpose of the Agreement is to ensure appropriate levels of communication, co-ordination and collaboration between local authorities within the region. The agreement must include:
 - protocols for communication and co-ordination between the councils
 - the process by which councils will comply with section 16 of the Act, which applies to significant new activities proposed by regional councils
 - processes and protocols through which all councils can participate in identifying, delivering and funding facilities and services of significance to more than one district.
3. Agreements may also include commitments to establish joint governance arrangements to give better effect to the matters set out in paragraph 2 above.

Parties to the Agreement

4. The Parties to the Agreement are the Kaikōura, Hurunui, Waimakariri, Selwyn, Ashburton, Timaru, Mackenzie, Waimate and Waitaki District Councils, the Christchurch City Council, and the Canterbury Regional Council (Environment Canterbury).

Standing together for Canterbury

5. The Parties agree to work collaboratively and in good faith for the good governance and sustainable development of their districts, cities and region.

Communication

6. The Parties value and will maintain open communication, collaboration and trust. In the interest of “no surprises”, the Parties will give early notice of potential disagreements between, or actions likely to impact significantly on, other Parties.

Significant new activities

7. When a Party is considering a major policy initiative or proposal that may have implications for other Parties, they will give early notification to the affected Parties and share the information with the Canterbury Mayoral Forum and the Canterbury Chief Executives Forum.
8. The Canterbury Regional Council will provide early advice to the Canterbury Chief Executives Forum and the Canterbury Mayoral Forum of any significant new activity, in addition to other requirements specified in s.16 of the Act.

Local government structure in Canterbury

9. Notwithstanding the spirit of co-operation and collaboration embodied in the Agreement, the Parties, individually or collectively, reserve the right to promote, consult and/or research change to the structure of local government within the Canterbury region.
10. This right is consistent with the intent to improve the effectiveness and efficiency of local government (Local Government Act 2002 s.24AA), having particular regard to communities of interest and community representation.

Regional Policy Statement review

11. The Agreement applies to any change, variation or review of the Canterbury Regional Policy Statement.

Collaboration

12. The Parties commit to working collaboratively to:
 - enable democratic local decision-making and action by, and on behalf of, communities
 - promote the social, economic, environmental, and cultural well-being of communities in the present and for the future (Local Government Act 2002, s.10).
13. Collaboration may be undertaken on a whole-of-region, or sub-regional, basis.
14. The primary mechanism to implement this Agreement is the Canterbury Mayoral Forum. The Forum will meet quarterly and operate in accordance with its agreed terms of reference, which are attached as **Appendix 1**.
15. The Canterbury Mayoral Forum will:
 - continue to provide governance of the Canterbury Water Management Strategy
 - develop and lead implementation of a sustainable development strategy for Canterbury region for the local government triennium 2023–25
 - advocate for the interests of the region, its councils and communities.
16. The Canterbury Mayoral Forum will be supported by the Canterbury Chief Executives Forum and other regional forums and working groups as agreed from time to time.
17. The Chief Executives Forum will:
 - report quarterly to the Canterbury Mayoral Forum on delivery of its work programme to implement and manage collaborative projects and agreed actions of the Canterbury Mayoral Forum
 - identify and escalate to the Canterbury Mayoral Forum strategic issues and opportunities for collaboration from the Policy, Corporate and Operational Forums and other regional and sub-regional working groups.
18. As requested by the Canterbury Mayoral Forum, Environment Canterbury will host a permanent regional forums secretariat and resource this from the regional general rate.

Other agreements

19. This Agreement does not prevent the Parties from entering into other agreements among themselves or outside the Canterbury region. Any other such agreement should not, however, be contrary to the purpose and spirit of this Agreement.

Agreement to review

20. A triennial agreement may be varied by agreement between all the local authorities within the region and remains in force until local authorities ratify a new agreement.
21. Any one or more of the Parties can request an amendment to this Agreement by writing to the Chair of the Canterbury Mayoral Forum at least two weeks before a regular quarterly meeting of the Forum.
22. The Canterbury Mayoral Forum will review the Agreement no later than the final meeting before triennial local body elections and recommend any changes to the incoming councils.

Authority

23. This Canterbury Local Authorities' Triennial Agreement 2022–25 is signed by the following on behalf of their respective authorities:

COUNCIL	SIGNATURE	DATE
Ashburton District Council Mayor		
Canterbury Regional Council Chair		
Christchurch City Council Mayor		
Hurunui District Council Mayor		
Kaikōura District Council Mayor		

Mackenzie District Council Mayor
Selwyn District Council Mayor
Timaru District Council Mayor
Waimakariri District Council Mayor
Waimate District Council Mayor
Waitaki District Council Mayor

Appendix 1: Canterbury Mayoral Forum terms of reference

1. Name

The name of the group shall be the Canterbury Mayoral Forum.

2. Objectives

- (a) To provide a forum to enable Canterbury councils to work more collaboratively with each other and with central government and other key sector leaders in Canterbury to identify opportunities and solve problems together.
- (b) To identify and prioritise issues of mutual concern and foster co-operation, co-ordination and collaboration to address these issues (including where appropriate joint work plans).
- (c) To formulate policies and strategies on matters where all member councils may act collaboratively in determining plans for the co-ordination of regional growth.
- (d) To ensure increased effectiveness of local government in meeting the needs of Canterbury communities.
- (e) To act as an advocate to central government or their agencies or other bodies on issues of concern to members.
- (f) To develop and implement programmes, which are responsive to the needs and expectations of the community.

3. Principles

In pursuit of these objectives the Canterbury Mayoral Forum will observe the following principles.

- (a) Establish and maintain close liaison with other local government networks to ensure as far as possible the pursuit of common objectives and the minimisation of duplication.
- (b) Establish and maintain close liaison with Ministers of the Crown and local Members of Parliament.
- (c) Establish and maintain close liaison with a wide number of diverse stakeholders and key sector organisations within the region.
- (d) Exercise its functions with due regard to the tangata whenua and cultural diversity of the Canterbury community.
- (e) Keep the local community informed about its activities by proactively releasing information about key projects in a timely manner, as agreed by the member councils.
- (f) Encourage member councils to promote and apply cross-boundary structures and systems.
- (g) Establish a provision for reporting back to its respective Councils.

4. Powers

- (a) The Canterbury Mayoral Forum shall have the power to:
 - (i) levy for any or all of its objects in such amount or amounts as may be mutually determined and acceptable to individual local authorities
 - (ii) determine and make payments from its funds for any or all of the purposes of its objects
 - (iii) receive any grant or subsidy and apply monies for the purposes of such grant or subsidy
 - (iv) fund appropriate aspects of the Forum's activities regionally.
- (b) The Canterbury Mayoral Forum does not have the power to legally bind any council to any act or decision unless that act or decision has been agreed to by decision of that council.

5. Membership

- (a) Membership of the Canterbury Mayoral Forum shall be open to the following councils:
 - Ashburton District Council
 - Canterbury Regional Council (Environment Canterbury)
 - Christchurch City Council
 - Hurunui District Council
 - Kaikōura District Council
 - Mackenzie District Council
 - Selwyn District Council
 - Timaru District Council
 - Waimakariri District Council
 - Waimate District Council
 - Waitaki District Council.
- (b) Each member council shall be represented by its Mayor (or Chair in the case of Environment Canterbury) and supported by its Chief Executive. On occasions where the Mayor or Chair cannot attend, a council may be represented by its Deputy Mayor or Deputy Chair.
- (c) The Canterbury Mayoral Forum shall have the power to invite people to attend and participate in its meetings on a permanent and/or issues basis. The Forum has issued a standing invitation to the Kaiwhakahaere or other representative/s of Te Rūnanga o Ngāi Tahu to attend and participate in meetings of the Forum. The Forum has also extended an invitation to the chairs of the Papatipu Rūnanga to meet biannually with the Mayoral Forum.

6. Chairperson

- (a) The Canterbury Mayoral Forum shall select a Chair at the first meeting immediately following the Triennial Elections. This appointment may be reviewed after a period of 18 months.
- (b) The Chair selected will preside at all meetings of the Canterbury Mayoral Forum.
- (c) The Canterbury Mayoral Forum shall select a Deputy Chair at the first meeting immediately following the Triennial Elections.
- (d) The Canterbury Mayoral Forum may appoint spokespersons from its membership for issues being considered, in which case each member council agrees to refer all

requests for information and documents to the duly appointed spokespersons.

7. Meetings

- (a) Meetings will be held as required with an annual schedule, covering a calendar year, to be determined by the members. Meetings will be held quarterly at venues to be determined.
- (b) Special meetings may be called at the request of four members.
- (c) The secretariat will prepare an agenda for Mayoral Forum meetings in consultation with the Chair and the Chief Executives Forum.
- (d) Agendas for meetings will be issued and minutes will be taken and circulated.
- (e) A summary of each meeting will be drafted and shared on the Canterbury Mayoral Forum website for members to distribute within their councils as a high-level record of the meeting.
- (f) Approved minutes and approved final reports and papers will be made available via the Canterbury Mayoral Forum website as agreed by the Canterbury Mayoral Forum.

8. Decision making

- (a) The practice of the Forum will be to determine issues before it by consensus.
- (b) If the consensus is to determine issues by voting, the determination shall be determined by a majority of votes of the authorities represented at the meeting through the Mayor or Chair or their nominated representative.

9. Secretariat

The Canterbury Mayoral Forum will appoint Environment Canterbury to carry out the secretariat function on such terms and conditions as it shall decide for the discharge of duties. This includes taking minutes, keeping any books and accounts and attending to any other business of the forum.

11. Mayor's Monthly Report - January 2023

Reference / Te Tohutoro: 23/150310

Report of / Te Pou

Matua:

Phil Mauger, Mayor

General Manager /

Pouwhakarae:

Lynn McClelland, Assistant Chief Executive Strategic Policy and Performance (lynn.mcclelland@ccc.govt.nz)

1. Purpose of Report Te Pūtake Pūrongo

- 1.1 The purpose of this report is for the Mayor to report on external activities he undertakes in his city and community leadership role; and to report on outcomes and key decisions of the external bodies he attends on behalf of the Council.
- 1.2 This report is compiled by the Mayor's office.

2. Mayors Recommendations Ngā Tūtohu o Te Koromatua

That the Council:

1. Receive the information in this Report.
2. Note the following appointments of elected members:
 - a. Councillor Cotter to the Three Waters Constitution Working Group for Water Services Entity D;
 - b. Councillors Moore and Peters to the Creative Communities Scheme Assessment Committee;
 - c. Community Board Member Lee Sampson to the Port Hills Park Trust Board; and
 - d. Councillor Barber to the Christchurch NZ Aeronautical Advisory Group.
3. Note that Councillor Moore will assume the Youth Portfolio (as agreed with Councillor Harrison-Hunt).

3. Reason for Report Recommendations Ngā Take mō te Whakatau

- 3.1 The appointments noted above were made to address those not included at the Council meeting of 7 December 2022 and those requests which have come in since that meeting.
- 3.2 The appointment of Mr Lee Sampson to the Port Hills Park Trust Board is done at the recommendation of the Waihoru Spreydon-Cashmere-Heathcote Community Board.
- 3.3 The appointment of Councillor Moore to the Youth Portfolio is done in agreement with Councillor Harrison-Hunt who retains the Multi-cultural Portfolio.
- 3.4 The remaining appointments were made in consultation with the relevant councillors and the Deputy Mayor.

Attachments Ngā Tāpirihanga

No.	Title	Reference	Page
A ↓	Mayor's Monthly Report January - February 2023	23/172581	84

Mayor's monthly report

January-February 2023

Introduction

I hope this report finds people well and rested after the summer break. Christchurch has been buzzing over Christmas with events such as Bread & Circus and Elton John bringing people into the city. And with more projects now underway, such as the Stadium and Court Theatre, we can see that Christchurch is really on the cusp of realising the investment and hard work of the past decade.

But we do also have challenges we need to tackle. At Council we have some of these coming to the table in the next couple of months.

Coming up at Council

Annual Plan

Starting off 2023 with the update from staff that the draft annual plan is now looking like a 5.6% increase compared to the 14% forecast in November was a very positive start. I take my hat off for the team who worked hard over Christmas, going line-by-line to identify savings. This means we are likely consulting on a plan below the rate of inflation and much lower than we had expected when we left in December.

In late February we will need to agree on the draft plan for consultation with the community. We must encourage our residents to have a say – we need a good steer from them to help us when we come to finalising the plan in June.

Planning Changes

In March we will receive a proposed Plan Change 14 to enable the RMA reforms of 2022. We rejected notification in September 2022 because this did not fit well with Christchurch's geography and community. Again, our staff have worked hard over Christmas to consider the law against our geography in more detail. If we do choose to notify the plan, this means the public then get a chance to have their say on the proposed qualifying matters through the plan change process before a final proposal comes back to Council for a decision in 2024.

The other planning matter which cropped up over summer is around sound limits in the CBD. Council staff are looking into this issue – both the more permanent plan change options and the more practical non-regulatory options. They will keep Council up to date on progress before a final proposal comes to us for a decision.

On my Radar

Better Off Funding

I am hopeful that by the time you read this report, our *Better Off* funding application will have been processed by DIA. This includes an additional \$2 million in funding to help make much needed improvements to neighbourhood security which increases eyes and ears on the ground.

Greater Christchurch Partnership

Another thing on my radar is the upcoming public engagement for a Greater Christchurch Spatial Plan, including a potential Mass Rapid Transit corridor. This is a long-term vision for Greater Christchurch and it is exciting to be part of these discussions. In the long run, this work will set out how and where our City develops. The Greater Christchurch Partnership which drives this work will be engaging the community for their views over March. I really urge people to take interest and have their say – it may be looking 30-50 years ahead, but the opportunities to shape our city's future are huge.

Government Policy Review

I have to make a point of acknowledging former Prime Minister Jacinda Ardern for the work she did. While we had plenty of things we disagreed on, being Prime Minister is a massive job and anyone who puts their hand up to take it on deserves our respect. I hope she gets a chance to take some time off with her family over the next few months before getting stuck into the next chapter.

With that, I am encouraged by the new Prime Minister's commitment to reviewing and resetting the policy flow coming from Wellington. In the wider context of local government, it feels like everything is up for change at the moment, so a reset is something I am watching closely.

Shout Outs

Aerospace Industry

I have been blown away to learn more about Christchurch's growing aerospace sector. Christchurch NZ have been introducing Dawn and me to some of the companies making a real go of developing this industry, such as Project Tāwhaki on Kaitorete Spit. I really appreciated Linda and the team hosting us in January for a presentation and tour. Their work could see greater testing and development of new technology such as rockets and autonomous drones. It is also an example of mana whenua and business working in partnership to help ensure more people benefit. It really is fantastic!

University of Canterbury

Our local university celebrates 150 years in 2023 – it is a great achievement and one which will be well celebrated across the city. Talking to Vice Chancellor Cheryl de la Ray and some of her team last month, I was amazed at the different projects and programmes they are running. We are so lucky to have an institution like this in the city, bringing young people into Christchurch. We need to continue to support them and their work – especially as they expect to welcome their largest ever intake of students in 2023.

Seattle Sister City

February started by welcoming a delegation from Seattle to celebrate over 40 years since our Sister City Relationship started. This has been a wonderful opportunity to showcase Christchurch and connect local businesses and organisations between our two cities. Special thanks has to go to the Christchurch-Seattle Sister City Committee and our Civic & International Relations team at Council for making the tour go smoothly.

Duvauchelle and Little River Shows

One of the great jobs of being Mayor is being invited to open the A&P shows on Banks Peninsula. I love getting over there when I can, so there was no second guessing the invitation to open these shows in January. They bring the community together and highlight the rural economy and community really well. Great work again by the committees of volunteers who make these happen.

Karakia Whakamutunga

Kia whakairia te tapu

Kia wātea ai te ara

Kia turuki whakataha ai

Kia turuki whakataha ai

Haumi e. Hui e. Tāiki e