

Waipuna
Halswell-Hornby-Riccarton Community Board
MINUTES ATTACHMENTS

Date: Tuesday 2 August 2022
Time: 5.02pm
Venue: Rārākau: Riccarton Centre,
199 Clarence Street, Christchurch

TABLE OF CONTENTS	PAGE
4.1. Public Forum - Christchurch City BMX Club	
A. Christchurch City BMX Club - PowerPoint Presentation.....	3
4.2. Public Forum - Karamū community project	
A. Karamū Community Project - Handout.....	20
10. Elected Members' Information Exchange	
A. Elected Members' Information Exchange - Halswell Domain Netball Hoops - Photographs	21



Christchurch City BMX Club

Isobel Hooper Raceway – Kyle Park – Waterloo Road - Hornby



Introduction

Who are we?

Graeme Galt – Vice President

James Mellor – Committee Member

Why are we here?

Recent catch up with Hornby Greater Residents association

Lots of things coming up for us (new season, Souths '24)

Our wish to engage more with the wider community.

Get blessing to start Dirt Jump / Skills Area inside our lease

Fencing / Start Hill Cover (future wish)



BMX in Christchurch

Christchurch City BMX Club is one of two BMX Clubs here in Christchurch, the other club being the North Avon Christchurch BMX Club located in Bexley Reserve. Both clubs lease area from the Christchurch City Council.

Christchurch City BMX Club is under the umbrella of the Mainland North Region, this covers the three clubs in Canterbury and also the Nelson BMX Club in Tasman.

Across Canterbury we have around 200 members and nationally we have just under 2000 members as of the 2021 Season close.

With BMX poised to be added to the Commonwealth Games and already an Olympic sport, we envisage a rise in numbers with the 2026 Comm Games being held in Australia as the sport will be even more visible.

Christchurch City BMX has also secured the rights to host the 2024 South Island BMX Titles. This is one of the top 3 national meetings each year and we expect between 350-500 riders will attend this meeting.

For reference, Canterbury only has ~ 200 licensed riders between all clubs, this means that between 150-300 riders from all over New Zealand will travel to CHCH for this event. They will bring family and friends and as 80% of the riders are under driving age, they typically come with family. This means potentially up to 1000 people coming into the region for this event. Accommodation, hospitality and many other vendors benefit from this event.

2022 BMX RACING WORLD CHAMPIONSHIPS

NANTES
FRANCE

Rank	Nation
1	France (FRA)
2	Netherlands (NED)
3	United States (USA)
4	Colombia (COL)
5	Great Britain (GBR)
6	Australia (AUS)
7	New Zealand (NZL)

Membership

Christchurch City BMX Club is currently the fourth biggest BMX Club in the country (2021 season), and unlike many clubs as per the below register, our membership continues to rise year on year.

This year we have done a membership drive into schools. This year we have sent out information to a total of 224 schools in the region with a total school role of almost 89000 students. We also host an open day, this year it will be on the 21st August 2022 where we invite all to come and see what BMX is about.

Christchurch City BMX is the largest club in Canterbury with 114 members (2021 season). COVID has been tough for all sports and attracting new members and retaining current members has been hard however we are confident we can continue the upward trend we have in member numbers for the last 4 years.



Club Activities

The BMX summer season is typically from September through to March each year. Here at Christchurch City BMX, we also operate a Winter BMX season that takes us through April to August for as long as the weather allows us.

During the summer season, we are holding training nights for our club members every week on Tuesdays and Thursdays and a regional development coaching session on Saturday mornings.

In addition to these weekly training sessions, we also run race meetings, throughout the season. For the upcoming 2022-2023 season there will be these events;

Interclub meetings, typically attended by members of the canterbury clubs. We will hold six of these race meetings.

We will be holding trials for the NZ Mighty 11 team. We also host National Qualifying meets (to be eligible for the National Championship).

We will host our 40th Anniversary meeting in November and we will also host day 1 of the Mainland North Region Champs in January 2023. In total we are hosting 11 race meetings in the 2022/2023 season.

Lastly, in addition to these race meetings and our own coaching sessions, we are also proud to be hosting a number of training sessions from the Matt Cameron Racing Academy <https://www.mcraceacademy.com/>

Matt Cameron is widely known in BMX circles and most recently is linked to Rebecca Petch (as her coach) who completed for NZ at the Tokyo Olympics.



Registration / Have a go day - Sunday 21st August 2022

On Sunday 21st August we will be holding our club registration / have a go day. This is the 'start' to the season each year and a great time for people to come along and see what BMX is all about. We will have bikes to ride, gear to use and people to talk to.

Across our region we have sent out invitations to 225+ schools and have flyers in 100+ locations around CHCH. We also have a social media campaign going to boost this event, and hopefully numbers.

We welcome everyone to come down between 12-2pm and check out BMX in your community.

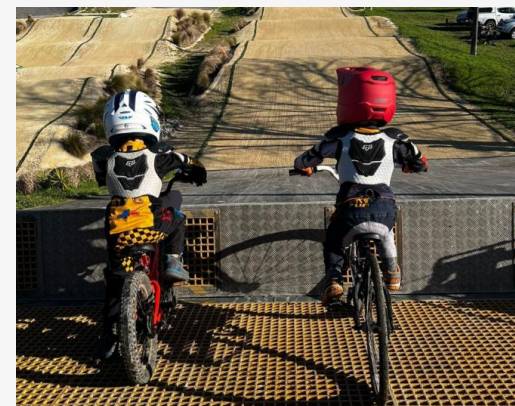


PHOTO : Olympic rider
Rebecca Petch

**REGISTRATION DAY
SUNDAY
21ST AUGUST***

COME AND TRY

**NEW SEASON ABOUT
TO START. COME & SEE
WHAT IT'S ALL ABOUT!**

***FOR BACK UP RAIN DATES
PLEASE CHECK FACEBOOK**

Local track details

There are a number of great tracks around the Mainland North Region. Find the one closest to you, and have a go.

CHCH CITY BMX CLUB

Kyle Park
Waterloo Road, Hornby
info@chcbmx.nz
www.facebook.com/CHCBMX

NORTH AVON CHCH BMX CLUB

Bexley Reserve
nacbm@gmail.com
www.facebook.com/North-Avon-Christchurch-BMX-Club-153985061282782

NORTH CANTERBURY BMX CLUB

32 Millton Ave, Waimakariri
(next to Ashley Bridge picnic area)
ncbmclub@gmail.com
www.facebook.com/NorthCanterburyBMX

NELSON BMX CLUB

Tahunanui Recreation Reserve
Beach Road, Tahunanui, Nelson
www.facebook.com/nelsonbmxclub

**RACING STARTS
SUNDAY
28TH AUGUST**



chcbmx.nz

Chc BMX Club

Christchurch City BMX Club

Isobel Hooper Raceway • Kyle Park • Waterloo Road • Hornby

Welcome to the Christchurch City BMX Club


We are Christchurch's biggest BMX Club. Members vary from those who ride for fun, friendship and fitness. Some ride in low key club or interclub racing throughout Canterbury and NZ. Those who are getting really serious ride at the Regional champs, Island Titles & NZ Championships. Some will also move into International racing and even qualify for the Olympics!

Come along and see what BMX racing is all about! Our club is located at Kyle Park, Hornby, Christchurch. For directions, please see our map on the [Contact](#) page.

If you're looking to give BMX a go, all you need is a bike in good working condition, a full-face helmet, long pants, long sleeved top and some gloves. On club nights we have a range of full-face helmets and bikes for hire for you to try out the sport prior to purchasing your own gear. We offer you your first three club nights for FREE to give it a go!

Keep an eye on our website and Facebook page for when we are racing, running gates sessions or for any cancellations due to weather.

***Please check our Facebook page for current track status.**



Dirt Jumps / Skills Area

The dirt jumps / skills area has been provisionally agreed upon by the council upon us tidying up the land it will occupy. This tidying has been completed. Together with the council and GSL, we were able to obtain a large amount of 'Cashmere Clay' that under the supervision of the Parks Ranger was placed into our site.

We have already presented to the Hornby Residents Association on this new skills area (inside our current boundary) and there were no objections just plenty of support.

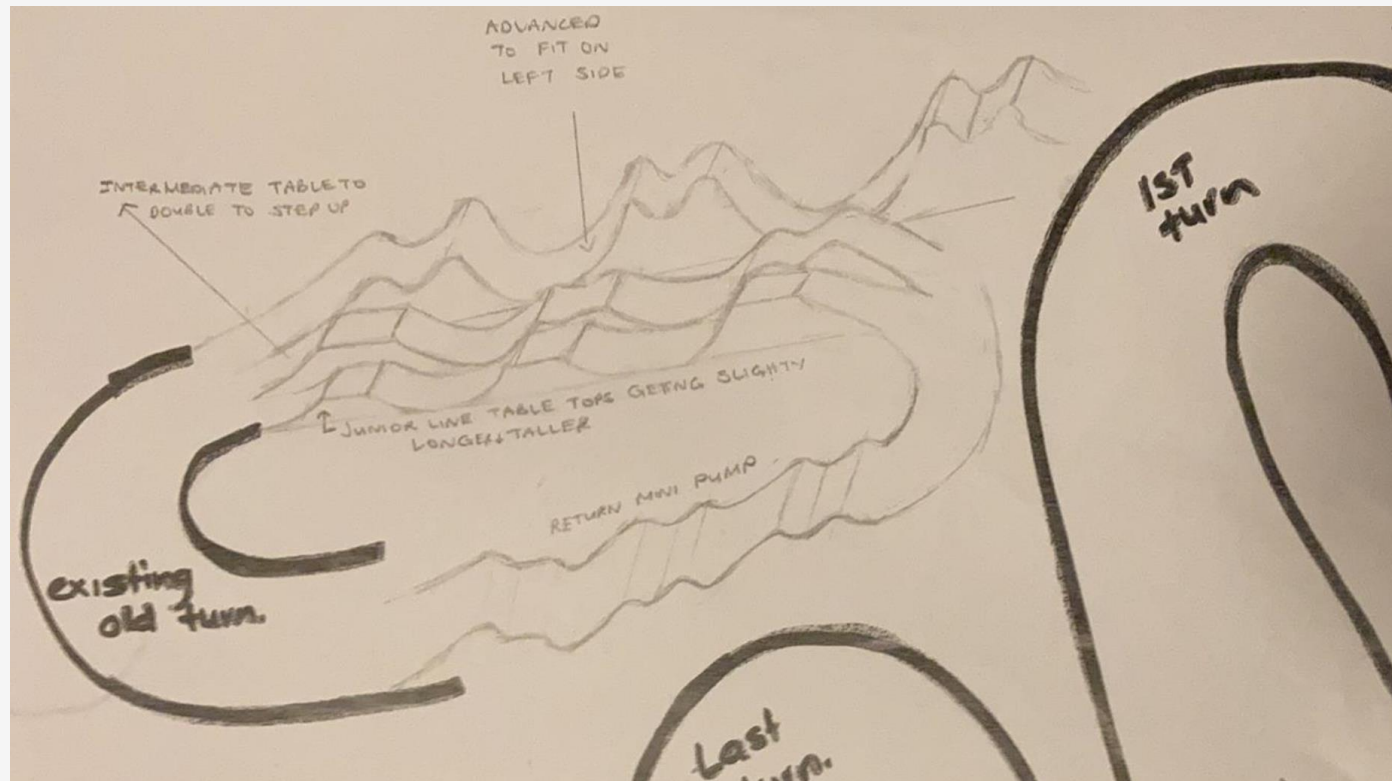
Tonight we speak here at the Christchurch Council Community meeting and assuming no objections, we will be all ticked off from the roadmap that was provided by Council.

The sketch below shows the intended position and approximate formation of our skills area / dirt jumps area.

You can see on the aerial image below; the dirt jumps will be between the pink and orange lines. The light brown earth you can see is the Cashmere Clay that has already been delivered onsite.

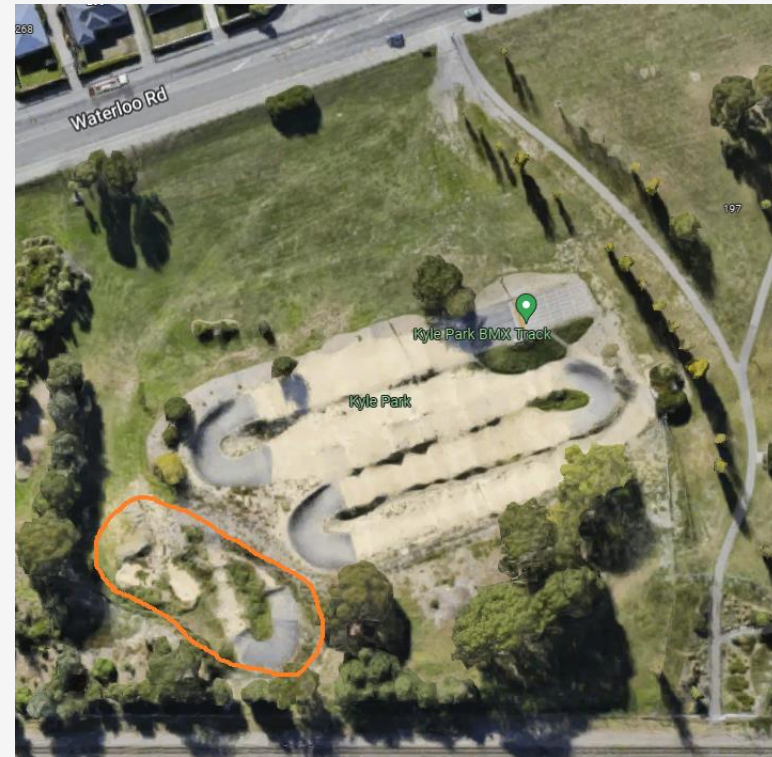
Dirt Jumps / Skills Area

Proposed plan



Dirt Jumps / Skills Area

Proposed location inside lease



Dirt Jumps / Skills Area

Similar example of another skills area



Fencing (wish list)

We also are looking at the potential to put a low 1200mm fence around the perimeter of the track. This fence will assist us with the Health and Safety aspects of running a BMX Club and will also help to clearly define that we are a club, run by volunteers and not just another council park that happens to have some dirt in the shape of a track.

We have like many public areas a problem with vandalism and having a low fence will give a visual representation that we are a club inside a council park, much like fences on a tennis court.

This fence would not stop the public from using our facility as would not enclose the track 100%.

It would be our expectation that this fence would either be of wooden post and rail design, or, galvanized steel and mesh wire to match the existing fence the council as around the facilities.

The pink line in the image below is where we are thinking for the low fence. Note this doesn't close our entire lease area, rather just the track itself.





Start Hill Cover (wish list)

(One day) We also would love one day to see a start hill canopy above our BMX Gate. Please see below photo of the recently completed canopy for the Cromwell BMX Club. This was completed prior to them hosting the 2022 South Island titles.

Having a canopy provides shelter from both the good and bad weather. On poor days, our track still operates and as such, gives riders and coaches somewhere to be out of the poor weather. On particularly hot days, and more importantly race days, having a cover over the start allows our riders young and old, some respite from the sun before their racing.



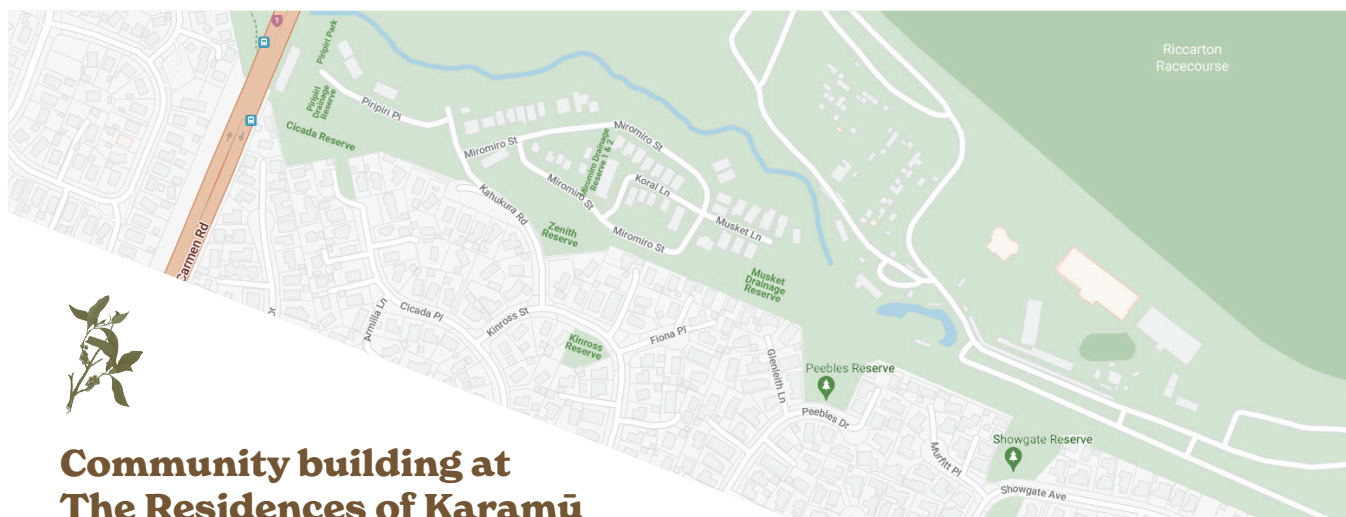
More questions about Christchurch City BMX Club?

Check out our webpage <https://chcbmx.nz>

Check out our Facebook Page <https://www.facebook.com/CHCBMX>

Email us info@chcbmx.nz

Or come see us at the track!



Community building at The Residences of Karamū

Ambition

Home Foundation and Gap Filler will work collaboratively with local residents (including brand new and longer-term, homeowners, private renters, and Community Housing Provider tenants) to foster and grow a sense of community. This will be achieved by collectively creating a neighbourhood project or amenity that encourages social interactions and builds a sense of belonging and pride in the area.

The process of working with residents will likely result in the development and delivery of an installation and/or event, utilising council-owned sites in the neighbourhood (pending council agreement).

Goals

- Grow a sense of neighbourhood: help residents meet, interact, and work together toward a common purpose
- Develop a project with local residents that fosters a positive and proactive neighbourhood
- Mitigate any potential concern or misunderstandings between homeowners, tenants, and Community Housing Provider tenants
- Make productive use of some vacant or under-utilised neighbourhood sites

Budget

Funded by Home Foundation

Timeline

May - Jun: Home Foundation and Gap Filler consult with the Christchurch City Council about the scope and limitations for projects

Jul - Aug: Develop an inclusive and collaborative process for working with the Karamū community

Oct - Nov: Deliver a series of interactive workshops that provide a safe space for residents to meet and get to know each other, brainstorm and develop project ideas

Early 2023: Deliver the project in consultation with the council and in partnership with local residents

Celebrate!

Follow up and review findings

Home Foundation is a charitable trust singularly focused on the eradication of homelessness. We believe that homelessness is not just the lack of access to safe, affordable, and healthy housing, but more fundamentally living without a sense of belonging. Provision of housing is one part of the solution, which is why Home Foundation have bought houses at Karamū to lease to CHPs. Community building is another way in which we can help people to feel they belong and live fulfilled lives.

Gap Filler is a creative placemaking agency working on projects that connect community development, urban design, art and public intervention. We create interactive installations, events and community projects that grow a sense of identity and make places more exciting, playful, social and diverse.



Claire Cowles
Community & Operations Lead
claire.cowles@homefoundation.org.nz
021 190 6981
www.homefoundation.org.nz

Olivia Webb
Project Coordinator
olivia@gapfiller.org.nz
022 3435 460
www.gapfiller.org.nz

Ryan Reynolds
Director
ryan@gapfiller.org.nz
022 143 3653
www.gapfiller.org.nz

