

**Three Waters Infrastructure and Environment  
Committee  
MINUTES ATTACHMENTS**

---

**Date:** Wednesday 8 June 2022  
**Time:** 9.30am  
**Venue:** Council Chambers, Civic Offices,  
53 Hereford Street, Christchurch

---

**TABLE OF CONTENTS**

**PAGE**

|   |   |
|---|---|
| <b>11. Three Waters Bi-monthly Report Feb - April 2022</b>  |   |
| A. Staff Presentation on the Capital Planning and Delivery, and Quality and Compliance functions of the Three Waters Team ..... | 3 |

---



# Three Waters

## Planning & Delivery and Quality Compliance

08/06/2022 – TWIE Committee meeting

# Planning & Development

## Significant achievements

- ❖ FY22 capex spend forecast of 95% (actual to date 85%)
- ❖ Lyttelton Harbour WW Scheme → discharge to Lyttelton Harbour discontinued as of end June 2022!
- ❖ Akaroa Existing WWTP → discharge consent received for existing plant to operate until 2030 (8 years)
- ❖ Duvauchelle WW → options for land re-use out to consultation
- ❖ Vacuum Monitoring System → transitioned to CCC telecommunication masts
- ❖ Wet weather discharge consent → variation submitted to support compliance – awaiting Mahaanui Kurataioa input

3

## Wastewater



## Ongoing matters

- Vacuum sewer system capacity and master plan updates
- Planning for MDRS and NPS-UD
- Infrastructure planning to support Greater Christchurch Spatial Plan
- Birdlings Flat septic tank consents
- Process Options Assessment for CWTP

## Water



## Significant achievements

- ❖ Jeffreys PS suction tank → construction started!
- ❖ Blighs PS well renewal → drilling started!
- ❖ Spreydon PS well renewal x 2 → drilling started!
- ❖ Reservoir Inspections → progressing well
- ❖ Koukourārata Springs Inspection & Closure → active support given to the Runanga
- ❖ Water and Sanitation LGA Needs Assessment → completed – updated list of private providers
- ❖ Fluoridation Concept Costing & Design → cost and timeframes information provided to MoH

## Ongoing matters

- Infrastructure planning to support Greater Christchurch Spatial Plan
- WS Rezoning Master Plan
- Rawhiti Smart Water Network

4

# Stormwater

## Ongoing matters

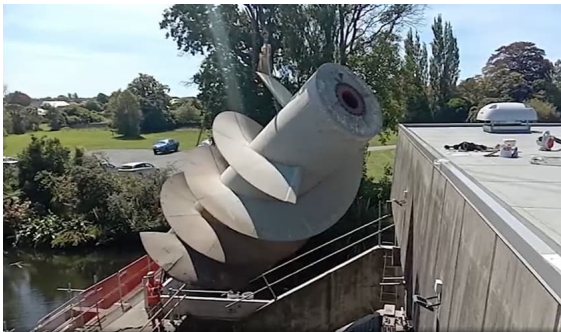
FY22 programme delivery significantly impacted by:

- Resourcing including Covid
- Supply chain delays (especially timber)
- Consenting issues (groundwater, wetlands, etc)

Supporting Council's climate change related initiatives

Responding to wide-ranging central government initiatives – housing, environment, water reforms

Uncertainty over stormwater in the water reforms



5

### \$8m Pump Station 205 – Avon

- 3 Archimedes screws
- Note person lower left for scale
- Upgrade & additional lift
- Completion expected in August



### \$30m Eastmans/Sutherlands Basins & Wetlands

- Comparable in size to Hagley Park
- 700,000 trees, shrubs and plants when completed
- Southern section to open to public in September

## Significant achievements

### \$12m Waitaki St (OARC)

- Stopbank, basins, wetlands, paths, cycleway, landscaping
- In construction
- Challenges include consenting, ground conditions, buried asbestos,



## Asset Management



- ❖ On-going preparation of Briefs for FY23 projects starting in July 2022
- ❖ Continue planning of renewals of assets committing budgets through FY24 & FY25

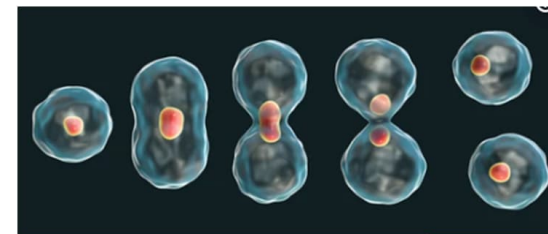
- ❖ Supporting non-3W teams projects such as upgrades around the CMUA and Naval Point Development
- ❖ Supporting capital projects with testing and commissioning e.g. PS205 and Lyttelton Wastewater Scheme



- ❖ Working through the backlog of as-built information updates into corporate data
- ❖ Helping with the supply of information for water reform



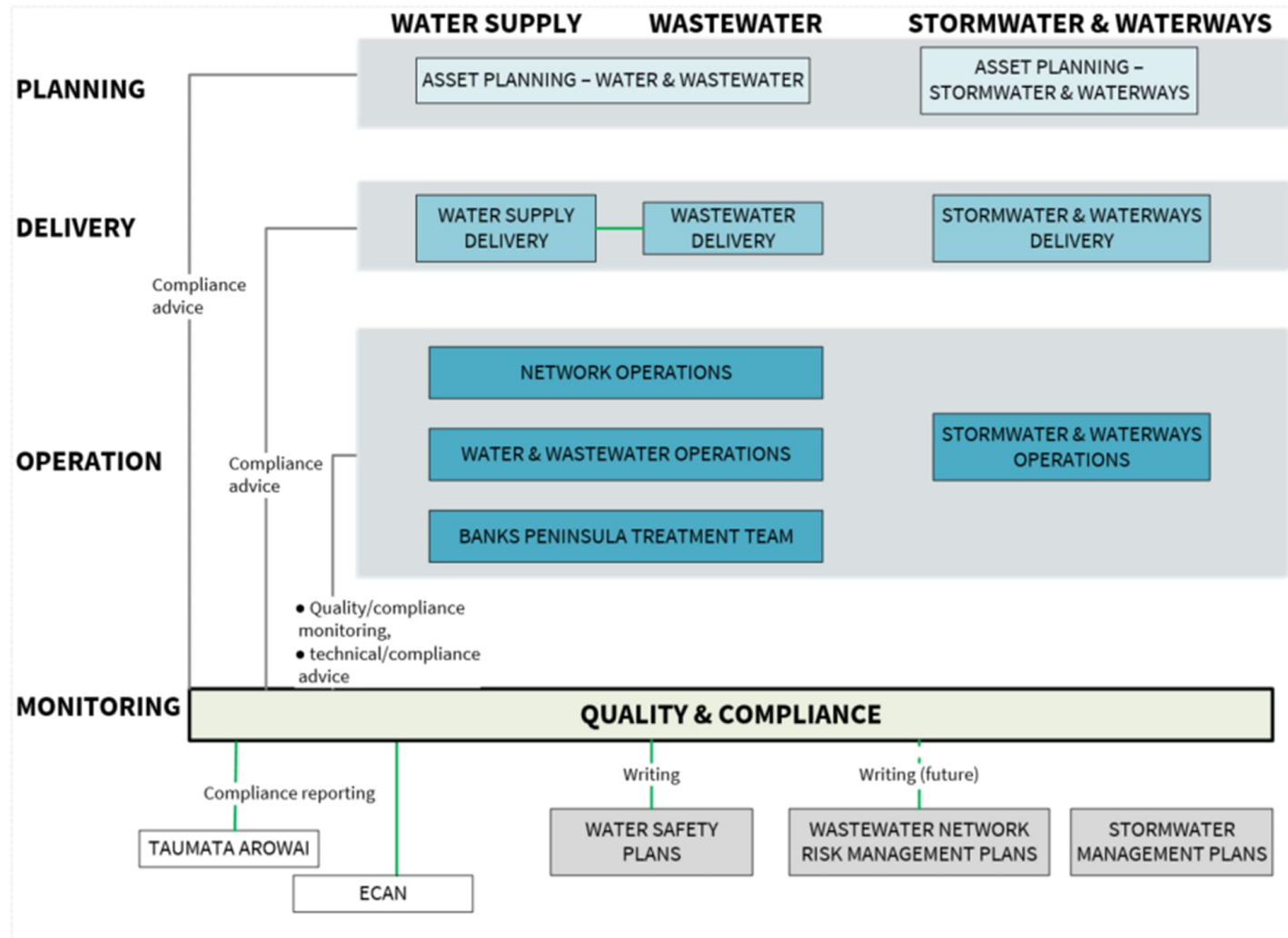
- ❖ Planning the changes to start the creation of the upcoming new 3 Waters Business Intelligence team





# Quality & Compliance

Quality and Compliance Team



## Water Safety Plans (WSP)

Produced and updated in-house at a high technical level.

Currently, the Water Safety Plans are the core documents to operate our water supply networks, and the everyday guide for the Operation Teams.



| SUPPLY                                     | VOLUME                     | UPDATE   |
|--|----------------------------|--|
| All water supplies                         | A                          | Sent to Taumata Arowai for review.                                       |
| Christchurch/ Lyttelton/ Brooklands-Kaingā | B - specific<br>C - source | Sent to Taumata Arowai for review.<br>Sent to Taumata Arowai for review. |
| Akaroa/ Takamatua                          | B - specific<br>C - source | Finished. Needs to split in Volumes B and C as per the new requirements. |
| Duvauchelle                                | B - specific<br>C - source | Updating<br>Under development  |
| Little River                               | B - specific<br>C - source | Updating<br>Under development  |
| Birdlings Flat                             | B - specific<br>C - source | Updating<br>Under development  |
| Pigeon Bay                                 | B - specific<br>C - source | Updating<br>Under development  |
| Wainui                                     | B - specific<br>C - source | Updating<br>Under development  |

## Three Waters Consents

Currently the Council holds 486 resource consents with Environment Canterbury (Ecan) and 274 of them are under the Three Waters Unit management.

The type of the Three Waters consents are grouped in:

| Permit type       | Number of consents |
|-------------------|--------------------|
| Coastal permits   | 23                 |
| Discharge permits | 98                 |
| Land use consents | 71                 |
| Water permits     | 82                 |

Quality & Compliance team is responsible to follow up consent requirements, expiry date, renewal, conditions review and non compliance response.

The major consents under the Three Waters Unit are:

## Three Waters Consents

Comprehensive water take for city water supply consent: Allows the Council to take groundwater from 154 wells for water supply, irrigation, firefighting, etc. across Christchurch.

### Treated Wastewater discharge consents:

Bromley WWTP: is our largest wastewater discharge consent. Ultimately discharged via a 3km ocean outfall into Pegasus Bay, the consent allows Council to discharge 518 million litres of treated effluent per day.

Lyttelton WWTP: is currently discharging treated effluent from Lyttelton, Governors Bay and Diamond Harbour into Lyttelton Harbour, however the new tunnel pipeline has already been commissioned and all wastewater is conveyed to Bromley ceasing all discharges into Lyttelton Harbour.

Wainui and Tikao Bay WWTPs: receive relatively smaller amounts of daily wastewater. These plant discharge treated wastewater to ground via land irrigation across areas of pine plantation.

Duvauchelle and Akaroa WWTPs: discharge treated wastewater into Akaroa Harbour.

Wastewater overflow discharge consent: We monitor the wastewater network and ensure that each overflow event is compliant with the consent, followed up through the correct sampling plan and measures to restore the discharge points to the previous conditions.





