

## **Sustainability and Community Resilience Committee MINUTES ATTACHMENTS**

---

**Date:** Wednesday 1 June 2022  
**Time:** 9.30am  
**Venue:** Council Chambers, Civic Offices,  
53 Hereford Street, Christchurch

---

<b>TABLE OF CONTENTS</b>	<b>PAGE</b>
<b>4.1. Public Forum - Cancer Society of New Zealand</b>	
A. Public Forum 4.1 - Smokefree Aotearoa presentation slides.....	3
<b>4.2. Deputations by Appointment - Don Gould</b>	
A. Deputation by Appointment 5.1 - Don Gould presentation slides.....	9
<b>5.2. Deputations by Appointment - Joanna Gould</b>	
A. Deputation by Appointment 5.2 - Joanna Gould presentation slides.....	17
<b>7. Draft submission on National Adaptation Plan</b>	
A. Draft Submission on National Adaptation Plan - presentation slides.....	34
<b>10. South Library Te Kete Wānanga o Wai Mōkihi - Earthquake Repair Options</b>	
A. Item 10. South Library presentation slides .....	39

---





*Te Puawaitanga  
ki Ōtautahi Trust*



**Canterbury**  
District Health Board  
Te Poari Hauora ō Waitaha



Legislating to implement The Smokefree  
Aotearoa 2025 Action Plan- an opportunity to  
strengthen our Auahi kore-Smokefree mahi

## Why is a plan for Smokefree Aotearoa still important?

- Smoking remains a leading cause of preventable premature death and disease in NZ.
- Cigarettes kill as many as two-thirds of its long-time users. 4500 people die each year from a smoking-related disease (350 die from exposure to second-hand smoke)
- Smoking remains a major driver of health inequity. Smoking rates 9.4% overall population. Māori (22.3%) Pacific peoples (16.4%)
- Tobacco is not an ordinary product yet is widely available - Makes quit journey harder
- 10 years on - key recommendations from the MASC inquiry into the tobacco industry have not progressed.





# Proposed Smokefree Aotearoa 2025 Action Plan

## 6 key focus areas:



Legislating to implement Smokefree Aotearoa 2025 Action Plan



## Amendment Bill required to:

Sustainability and Community Resilience  
Committee CCC  
1<sup>st</sup> June 2022

- Reduce nicotine to very low levels and restrict product design features that enhance the appeal and addictiveness of smoked tobacco products
- Significantly reduce the number of tobacco retailers authorised to sell smoked tobacco products and prevent tobacco retailers being concentrated in our most deprived neighbourhoods
- Create a smokefree generation where our future tamariki will never be able to purchase tobacco
- Require retailers selling vaping products to notify the Director-General of Health before selling

Bill introduced and First Reading      June 2022

Select Committee: receives and hears submissions and considers Bill July-Oct



## Next Steps:

Sustainability and Community Resilience  
Committee CCC  
1<sup>st</sup> June 2022

- We encourage submissions from individuals, whānau, organisations and communities - impact of tobacco stories
- Health sector, tangata whenua and local councils are instrumental in countering tobacco industry rhetoric.
- Local Authority involvement in submission process -individual councils, opportunities for a regional approach via Canterbury Mayoral Forum - Policy Forum
- Kaipara District Council-Vaping remit at LGNZ conference July 2022

Next Steps





Working together to achieve a  
smokefree Aotearoa by 2025

# Pātai / Questions

Questions /Working Together





## Mayor apologises over 'failure' to communicate with stench-hit community

Steven Walton · 10:15, May 31 2022



Christchurch mayor Lianne Dalziel talking with residents affected by the wastewater treatment plant at a recent community meeting.

# HOW DID WE GET HERE?

SIMPLE – Just too much on the agenda, taking elected members away from core business.

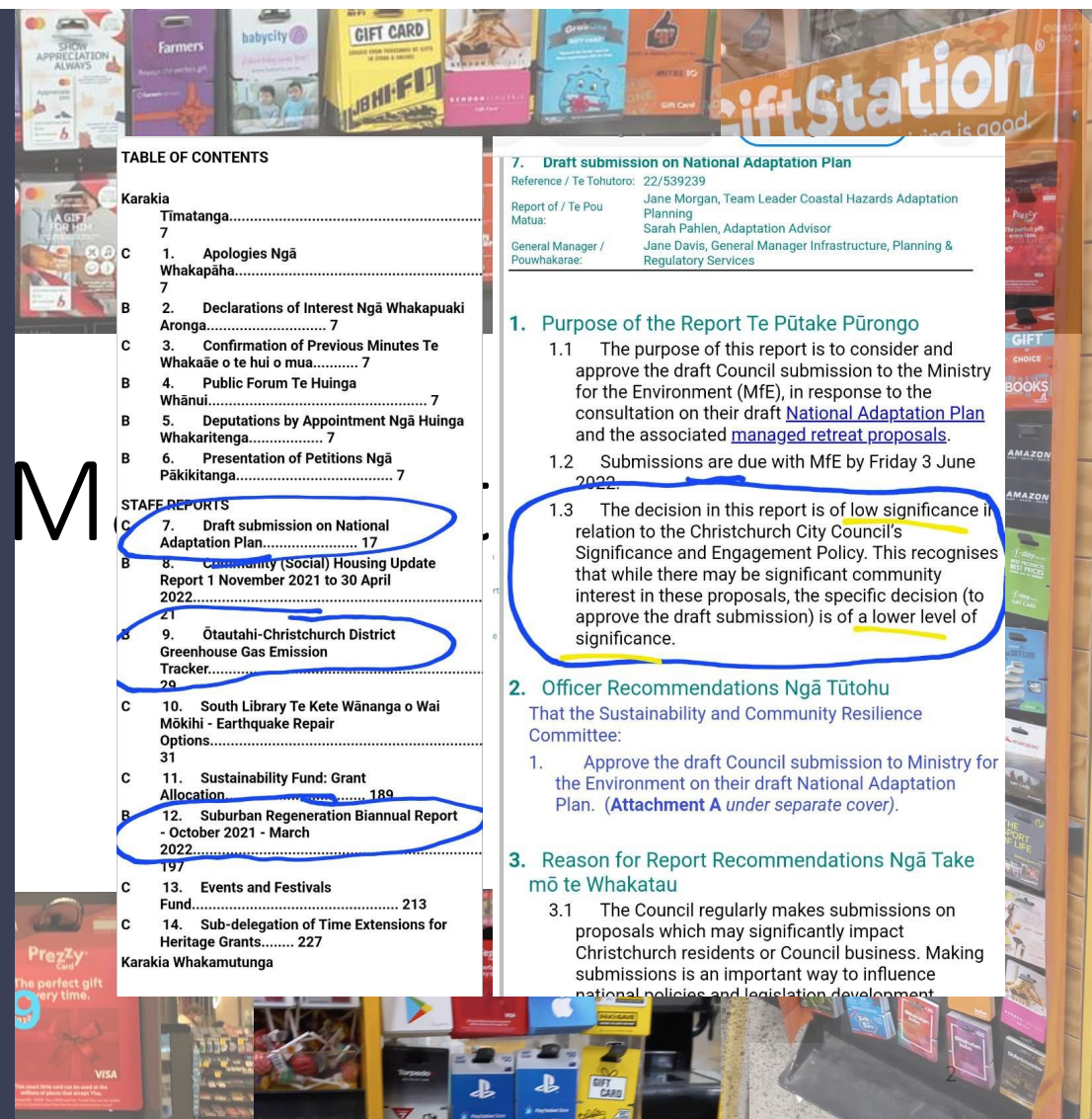
NOTHING GETS DONE PROPERLY – Too much is glossed over, the councils internal resources are spread too thinly over too much noise.

# MY CONCERN TODAY – THE SOLUTION

\* Please push noise off  
your agenda

\* Please focus

\* Please allocate more  
resources to what is  
left, the important  
matters





There will always  
be a paper from  
Wellington to  
engage with,  
  
A program we  
could do better,  
  
A policy that should  
be reviewed,

TABLE OF CONTENTS

Karakia  
Timatanga..... 7

C 1. Apologies Ngā Whakapāha..... 7

B 2. Declarations of Interest Ngā Whakapuaki Aranga..... 7

C 3. Confirmation of Previous Minutes Te Whakāe o te hui o mua..... 7

B 4. Public Forum Te Huinga Whānui..... 7

B 5. Deputations by Appointment Ngā Huinga Whakaritenga..... 7

B 6. Presentation of Petitions Ngā Pākitanga..... 7

STAFF REPORTS

C 7. Draft submission on National Adaptation Plan..... 17

B 8. Community (Social) Housing Update Report 1 November 2021 to 30 April 2022..... 21

B 9. Ōtautahi-Christchurch District Greenhouse Gas Emission Tracker..... 29

C 10. South Library Te Kete Wānanga o Wai Mōkihi - Earthquake Repair Options..... 31

C 11. Sustainability Fund: Grant Allocation..... 189

B 12. Suburban Regeneration Biannual Report - October 2021 - March 2022..... 197

C 13. Events and Festivals Fund..... 213

C 14. Sub-delegation of Time Extensions for Heritage Grants..... 227

Karakia Whakamutunga

7. Draft submission on National Adaptation Plan  
Reference / Te Tohutoro: 22/539239  
Report of / Te Pou Mātua: Jane Morgan, Team Leader Coastal Hazards Adaptation Planning  
Sarah Pahlen, Adaptation Advisor  
General Manager / Pouwhakarae: Jane Davis, General Manager Infrastructure, Planning & Regulatory Services

1. Purpose of the Report Te Pūtake Pūrongo

1.1 The purpose of this report is to consider and approve the draft Council submission to the Ministry for the Environment (MfE), in response to the consultation on their draft [National Adaptation Plan](#) and the associated [managed retreat proposals](#).

1.2 Submissions are due with MfE by Friday 3 June 2022.

1.3 The decision in this report is of low significance in relation to the Christchurch City Council's Significance and Engagement Policy. This recognises that while there may be significant community interest in these proposals, the specific decision (to approve the draft submission) is of a lower level of significance.

2. Officer Recommendations Ngā Tūtohu  
That the Sustainability and Community Resilience Committee:

1. Approve the draft Council submission to Ministry for the Environment on their draft National Adaptation Plan. ([Attachment A under separate cover](#)).

3. Reason for Report Recommendations Ngā Take mō te Whakatau

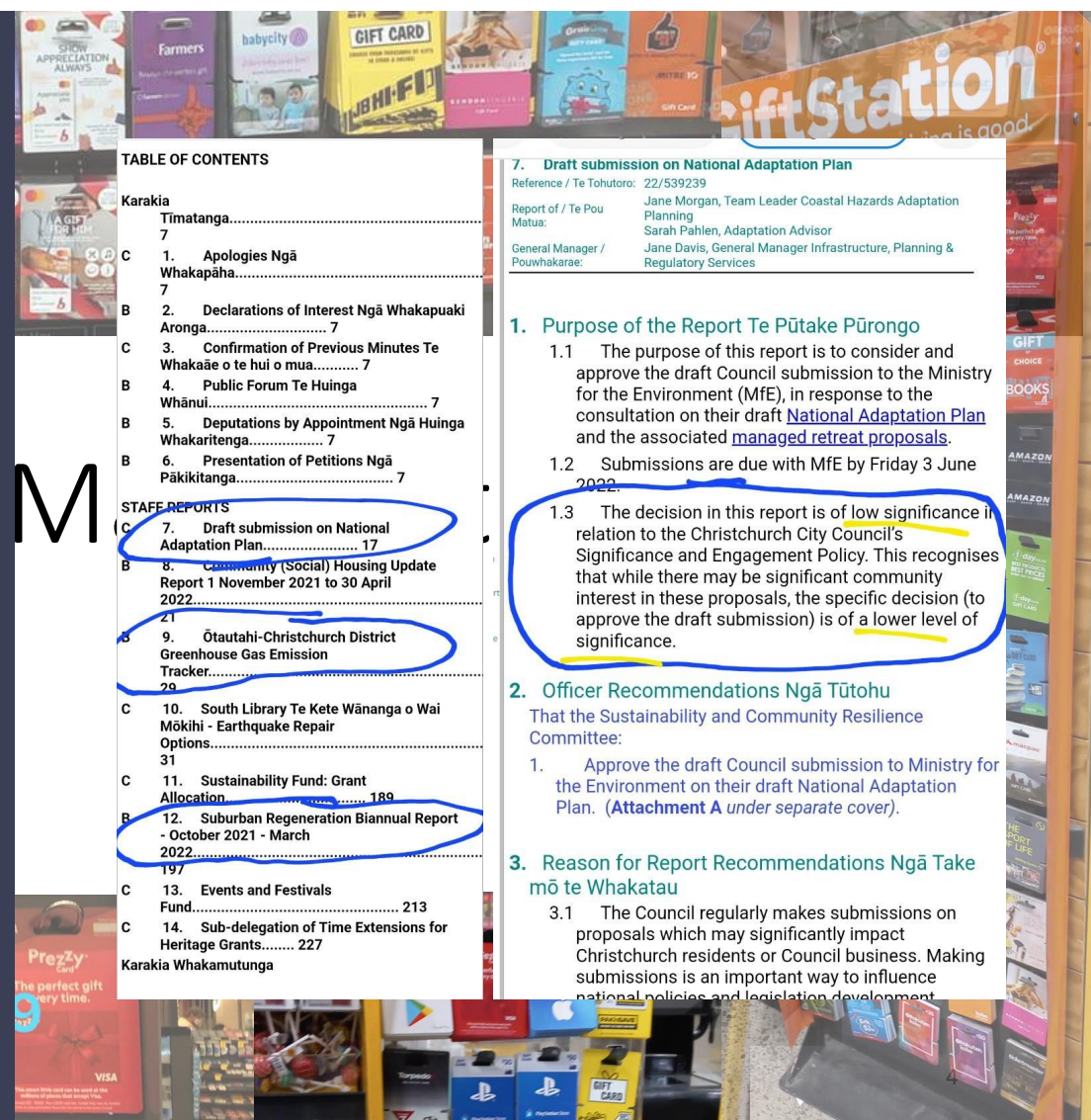
3.1 The Council regularly makes submissions on proposals which may significantly impact Christchurch residents or Council business. Making submissions is an important way to influence national policies and legislation development.

Item 7 - Papers from Wellington are for the general public to engage in directly.

Please leave it to members of the public to make their own submissions if they choose.

If they are unhappy with government policy, then there is an election

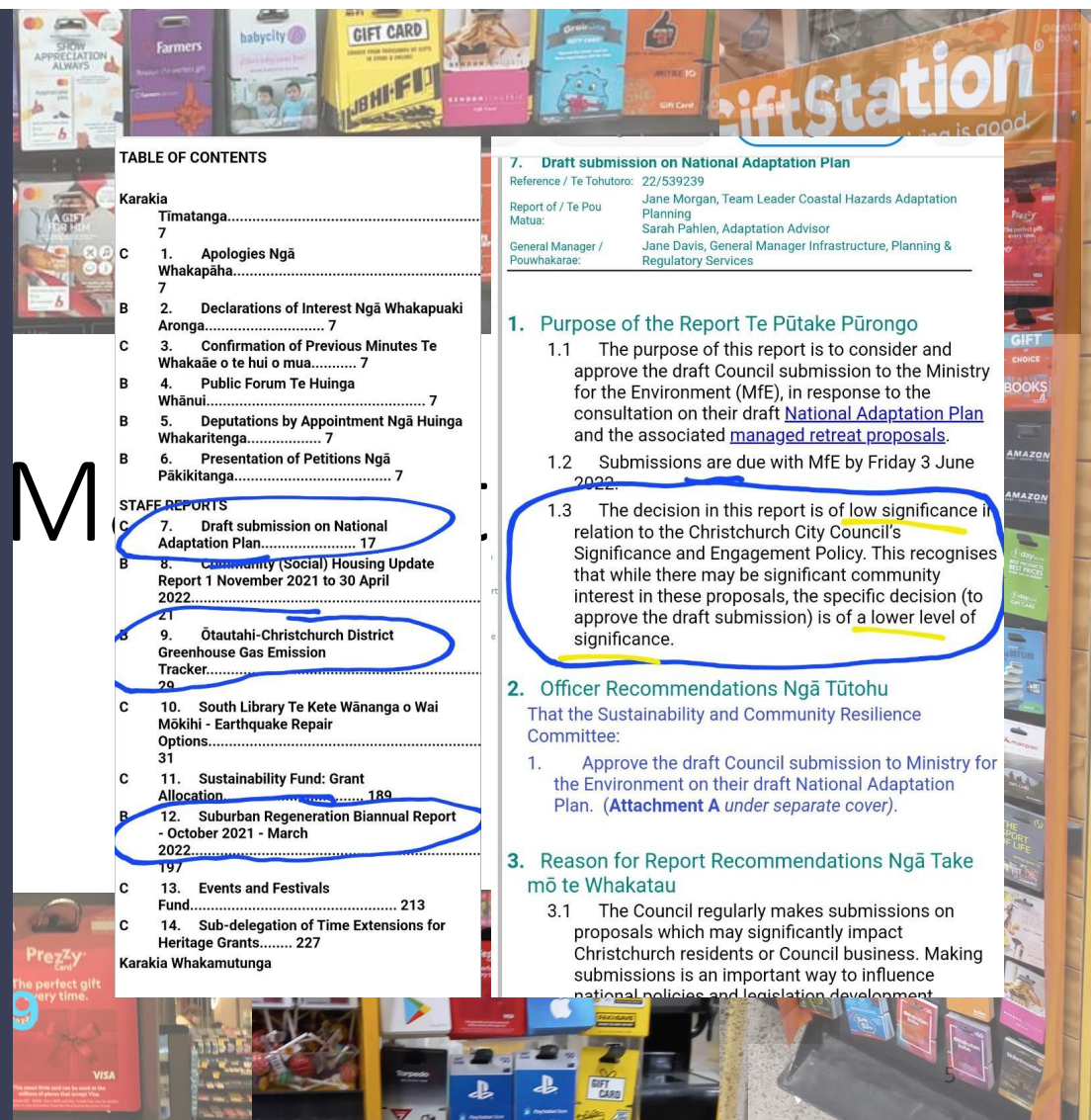
It is not the job of councils to be the opposition – government actually has an opposition and to often council is undermining that process.





Item 9 – This dashboard and supporting material really looks like the work of the Ministry for the Environment.

Like social housing (also on the agenda) this appears to be a response to poor government policy delivery or simply a bunch of locals who want a swim in the same pool without being in Wellington.



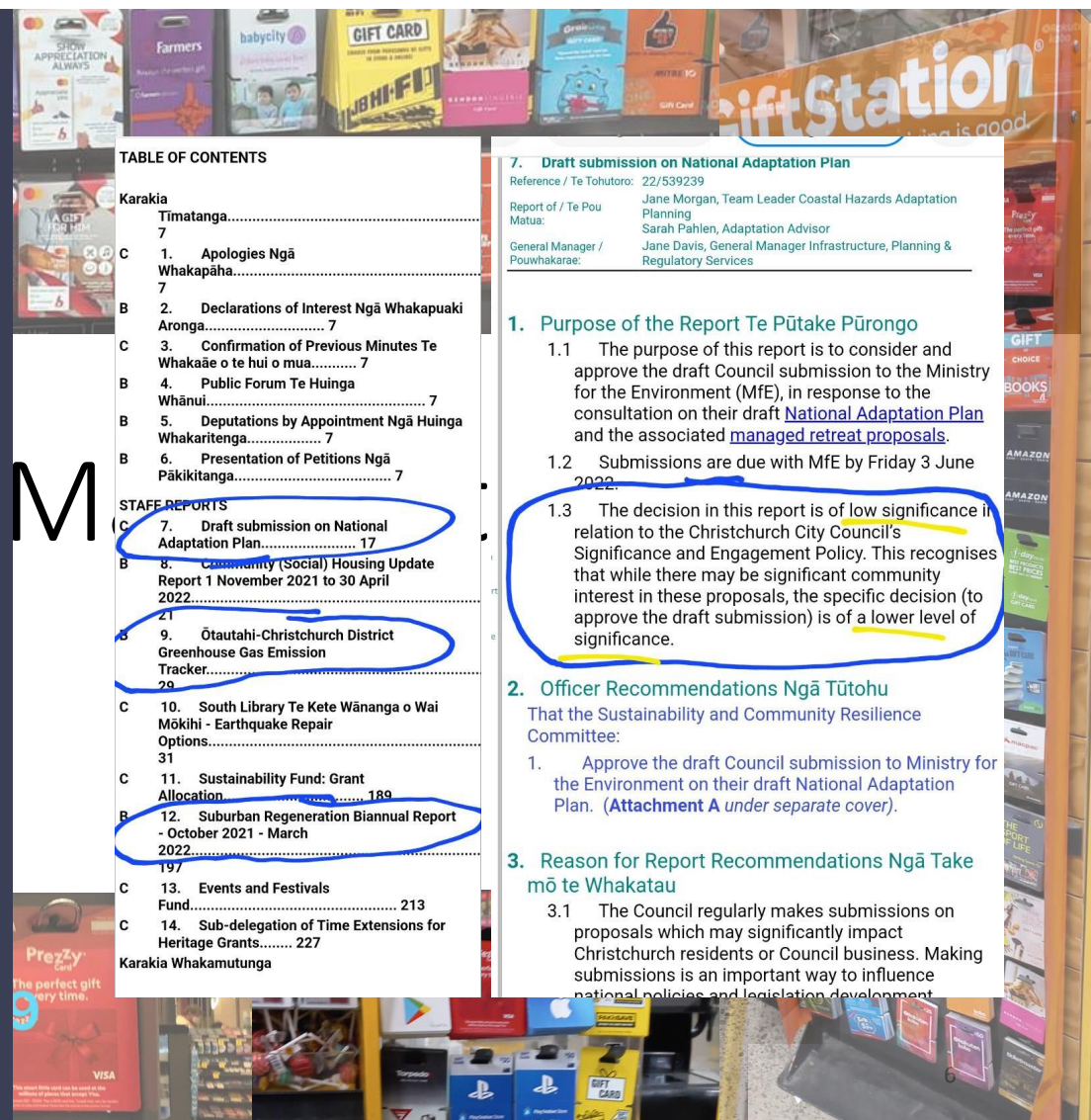
Item 12 – Reports come up for review all the time.

As governance, it's your role to push them off and have the structures reviewed.

I understand that the LGA may present requirements, at some point we must test that when the demands are overwhelming us.

We ended up with chlorine in the water because we didn't push back, we didn't test, we refused to go to court.

We are simply out gunned by Wellington, and they are now DDOS'ing us.

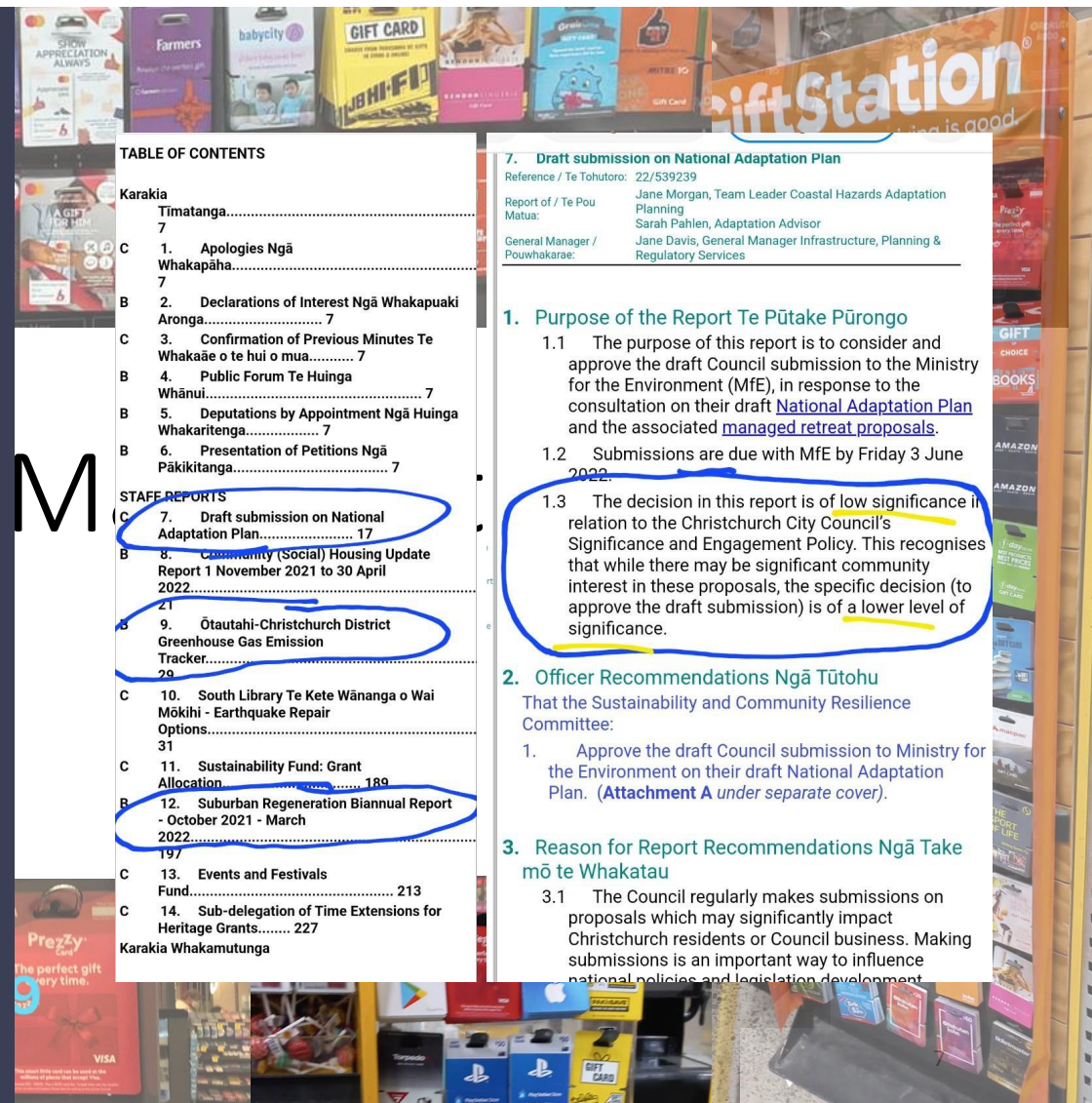




*“The decision in this report is of low significance in relation to the Christchurch City Council’s Significance and Engagement Policy. This recognises that while there may be significant community interest in these proposals, the specific decision (to approve the draft submission) is of a lower level of significance.”*

The army of individuals processing these papers on the table could have been out on Friday, where Stephen McPaik was on Monday night, tracking down hundreds of “prezie cards”.

The army could have been helping staff who are clearly overwhelmed.



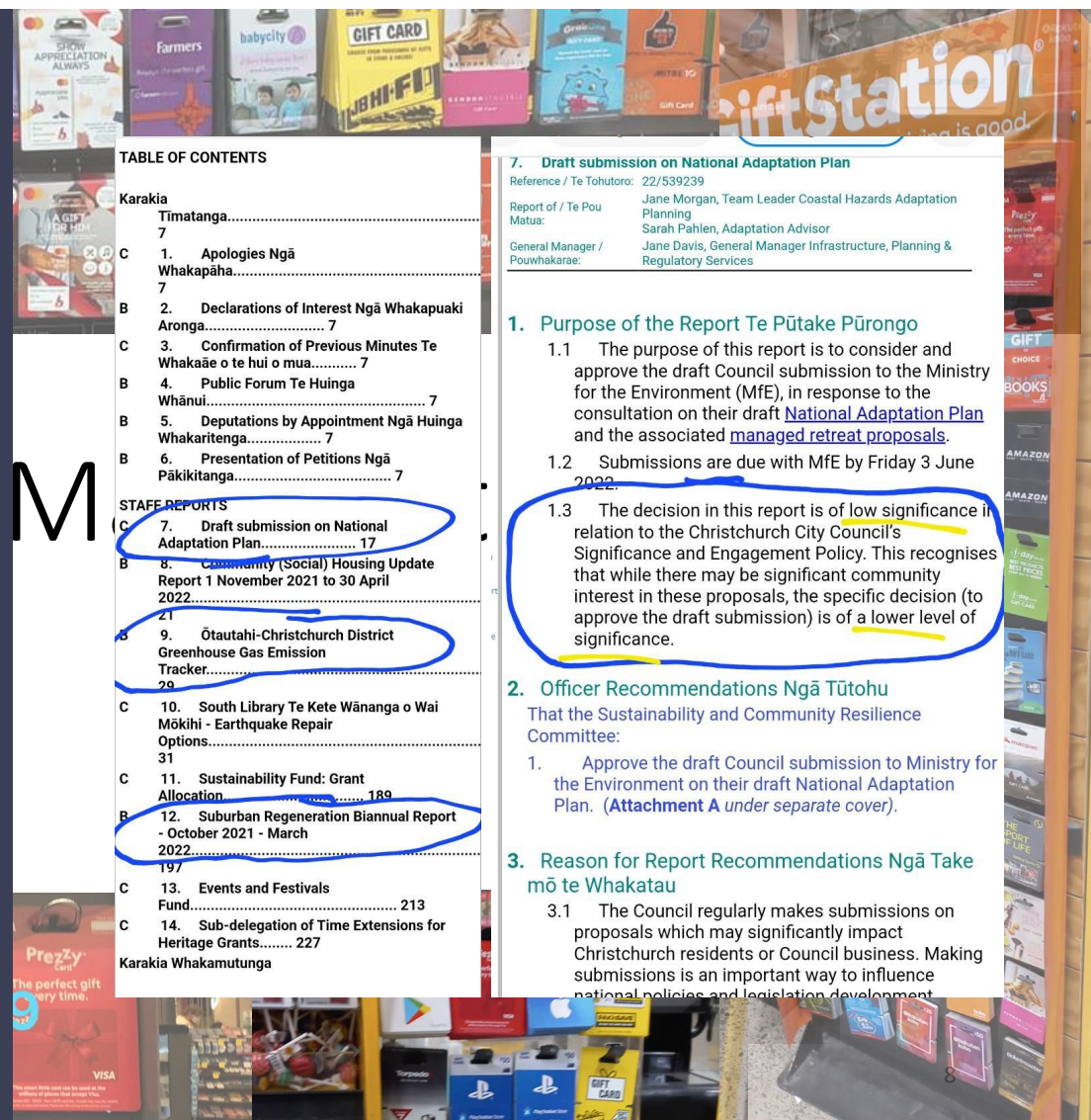
## THE SOLUTION

\* Please push noise off  
your agenda

\* Please focus

\* Please allocate more  
resources to what is  
left, the important  
matters

Questions?







<https://www.stuff.co.nz/the-press/news/128047707/earthquake-repairs-spell-18month-closure-of-popular-christchurch-library>

Stuff

the press

## Earthquake repairs spell 18-month closure of popular Christchurch library

Tina Law · 19:06, Mar 16 2022



STACY SQUIRES/STUFF

South Library in Colombo St was damaged in the 2011 earthquakes.

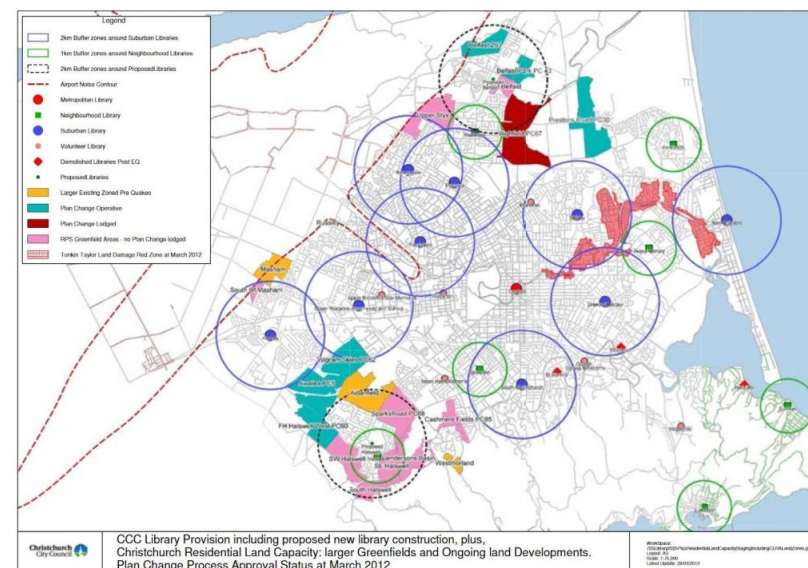
One of Christchurch's busiest suburban libraries will close for about 18 months to allow for earthquake repairs.

South Library in Beckenham was damaged in the 2011 earthquakes and while temporary strengthening work was done the following year, long-term repairs are yet to be completed.

The work, which was approved by Christchurch City Council in 2016, had been planned for 2018 once the central library Turanga opened, but the council deferred the project until after the new \$36 million Hornby Library, service centre and pool facility opens early next year.

"It [South] is the third-busiest suburban library, behind Fendalton and Shirley, with 4552 weekly visitors. Of the council's suburban libraries it has the highest number of items issued this financial year, with 8918 each week."

### Appendix 1. 2014 updated Map





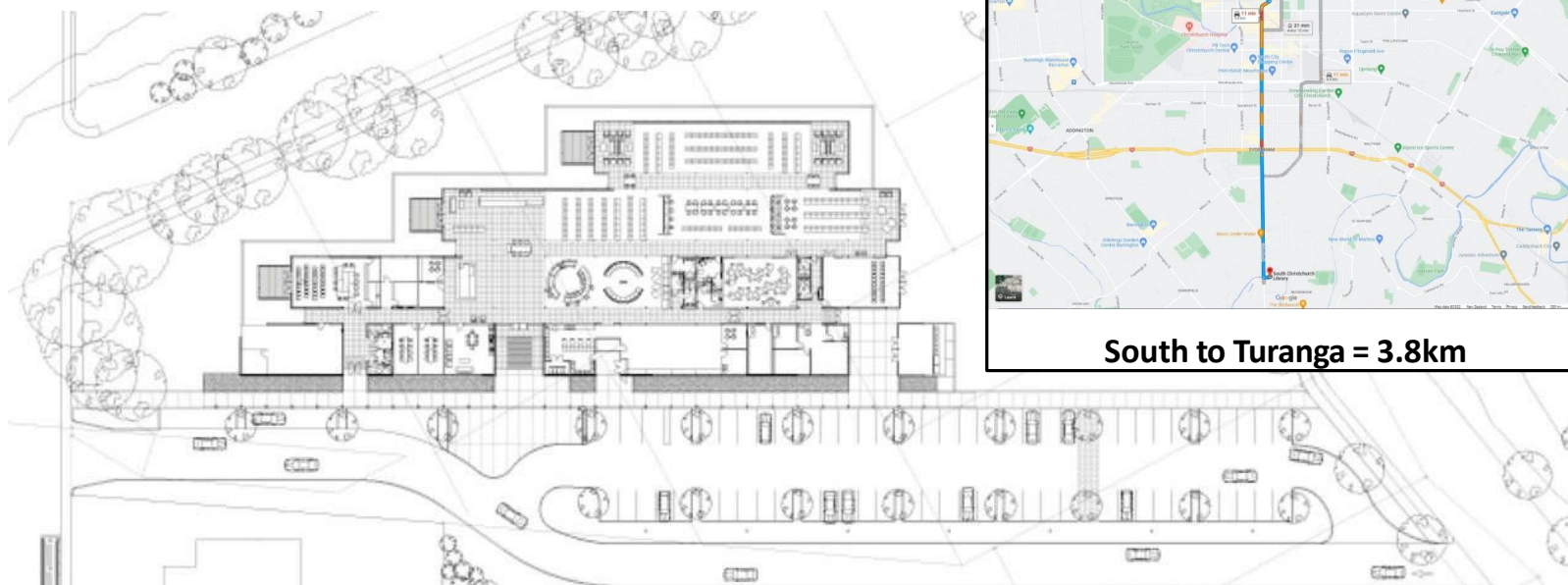
**South Library:** This single-storey building was designed to serve a wide range of community needs. Among these were a traditional library, a council service centre, meeting rooms, a learning centre with an IT suite servicing local schools, and an independent café.

The brief was developed through consultation with the local community which expressed a strong preference for an informal building that was responsive to the environment and acknowledged the building's unique site, bounded as it is on one edge by Heathcote River. The core concept for the building was then developed with the help of The Natural Step, and it later became a pilot for the development of the Christchurch City Council's Target Zero Strategy.

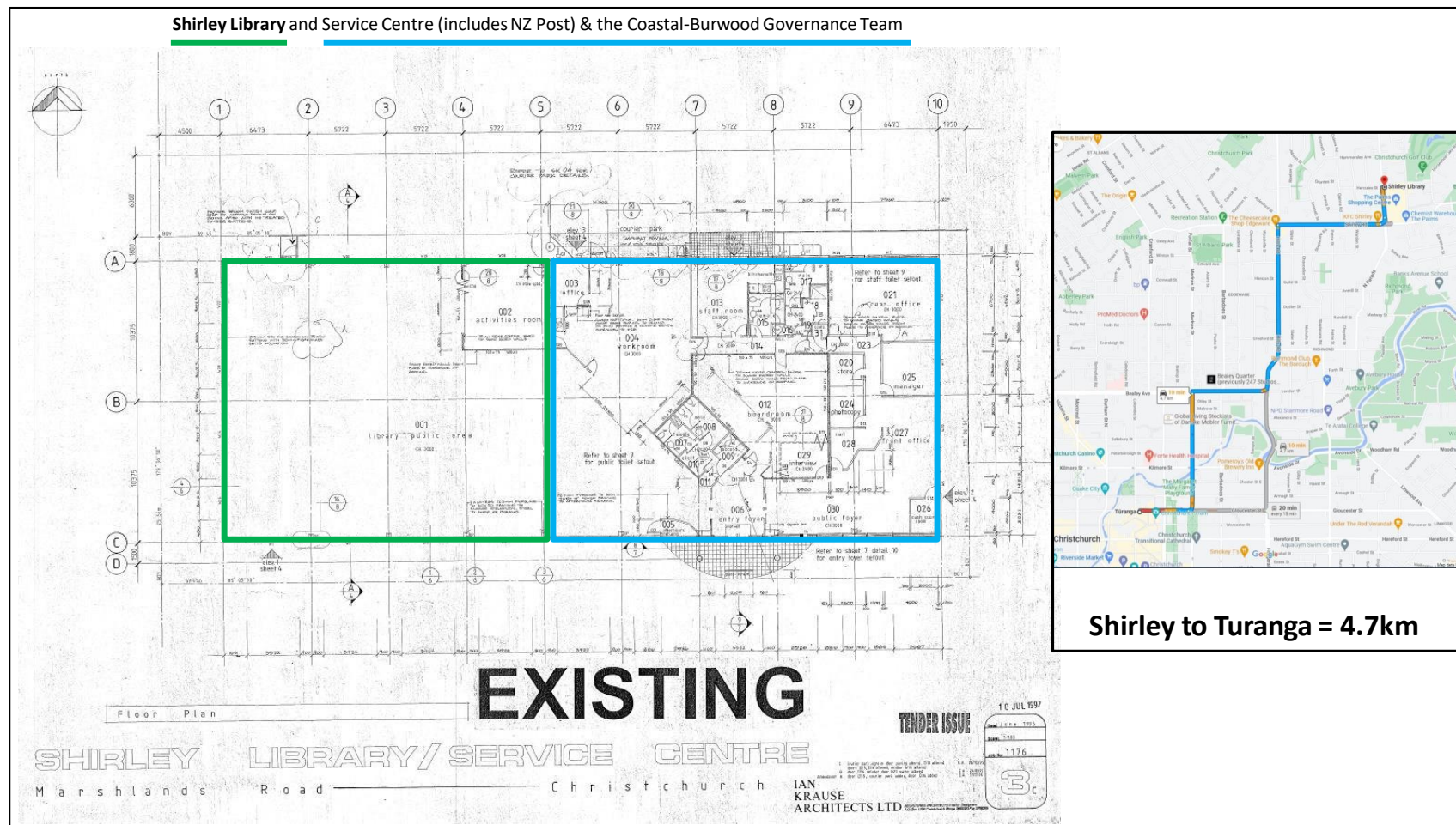
Sustainability features make the complex one of the most environmentally friendly buildings in Christchurch providing substantial long-term benefits for the community.

Environmentally Sustainable Design (ESD) Features: Water use, Material selection, Waste minimisation & Site ecology

<https://warrenandmahoney.com/portfolio/south-christchurch-library-and-service-centre>



South to Turanga = 3.8km



'South Library Te Kete Wānanga o Wai Mōkihi - Earthquake Repair Options' Report | Joanna Gould | June 2022





#### ReVision Youth Audit Shirley Library

[https://christchurch.infocouncil.biz/Open/2021/12/YTAC\\_20211201\\_AGN\\_5468\\_AT.PDF](https://christchurch.infocouncil.biz/Open/2021/12/YTAC_20211201_AGN_5468_AT.PDF)

(Page 20-37)

“The Shirley Library performed below average, in the Youth Friendly Spaces Audit, scoring a total of 64.5% and producing a Net Promoter Score of -50...The audit was completed by 6 diverse auditors ranging in age from 12 to 18.”

“A common theme was that young people would really love to see some more activities for youth. Young people don’t want to have a space that is at the back corner of the library. A young person suggested that they would change the layout to be more obvious where the youth space was and would make it larger.”

“The suggestion of more chairs and comfy places to sit such as more bean bags etc. was also raised again within this discussion around resourcing. This highlights a strong consensus that the Shirley Library should have more places for both young people and all library users to sit. In terms of books, young people were in agreement that there needed to be more new books circulating in from other libraries and more books for them as young adults.”

“When asked if the space reflected their culture many of the young people said that it doesn’t feel multicultural and that they would love to see more Te Ao Māori and Te Reo Māori around the space.”

“The average net promoter score is low and suggested that young people would not recommend the space to others.”







### Asset Management Plan Summary: Libraries

<https://ccc.govt.nz/assets/Documents/The-Council/Plans-Strategies-Policies-Bylaws/Plans/Long-Term-Plan/LTP-2021-final/Asset-Management-Plan-AMP-Libraries-LTP-2021-2031.PDF>

#### What we do

We are responsible for the city's library assets and services, providing direct support and assistance to residents of and visitors to Christchurch when they visit our facilities in person or access our services online. We provide:



**Collections** – general, specialist, heritage and digital content to meet the needs of the community, across a network of 18 libraries, including the mobile library and our digital channels. (The collections are not included in this asset management plan.)



**Community spaces** – a wide variety of spaces across our network of 18 libraries, including the mobile library and our digital channels.



**Access to information** – equitable access to relevant, timely information and professional services.



**Programmes and events** – designed to meet customers' cultural, creative, learning and recreational needs.

#### Why we do it

Through our work we enable communities, by helping to build cohesion, connectedness, resilience, wellbeing and self-sufficiency.

Christchurch comprises many different communities. These communities may be based on location, interests, differences, strengths or identities. The diversity of these groups and their collective strengths and differences make Christchurch an interesting, attractive place to live, work, play and visit.

We also enhance connections and cohesion within and between communities, and play an important role in facilitating the ability of individuals and groups to contribute to local decision making and community action.



#### Our functions and services

Christchurch public libraries are vibrant and welcoming community hubs, at the heart of local communities. They provide vital connections to the world of knowledge, ideas and imagination and foster literacy and learning from an early age.

By ensuring free and equitable access for all, libraries enable people to participate as citizens and strengthen their communities, culturally, socially and economically. Libraries are an agent for community building, social inclusion and engagement.

Cultural services are provided, often in partnership, to meet the needs of specific user groups, such as Māori, Pasifika and people of other ethnicities.

We promote literacy and lifelong learning by providing equitable access to knowledge, ideas and new perspectives. This includes providing access to a variety of resources for information, leisure and community connection, and outreach services to communities with specific needs.

Our libraries also help citizens actively participate in their community and wider society, by providing access to civic and government information.

The network of libraries delivers modern and robust fit-for-purpose assets in local neighbourhoods, enabling people to connect, engage and communicate. We provide spaces for people to relax, to access free internet and to meet others, contributing to thriving suburban and rural centres and a vibrant city centre.

Through the collection, creation and curation of local content and history, we help strengthen community identity and preserve community memory, for current and future generations.

10  
SHIRLEY  
ROAD

## Regional Policy Statement / Chapter 6 - Recovery and Rebuilding of Greater Christchurch

Map A - Greenfield Priority Areas and Future Development Areas (viewable in more detail at [www.ecan.govt.nz](http://www.ecan.govt.nz))

[illegible]

Environment Canterbury Page 10 of 10



**Asset Management Plan Summary: Libraries**

<https://ccc.govt.nz/assets/Documents/The-Council/Plans-Strategies-Policies-Bylaws/Plans/Long-Term-Plan/LTP-2021-final/Asset-Management-Plan-AMP-Libraries-LTP-2021-2031.PDF>

Page 66, Asset Portfolio Value

**Table 7-3: Asset Portfolio Value**

RE Object	Asset Description	Book Value	Replacement Cost
BU CCC1/1330/4 Total	New Brighton Library & Pier Terminus Building	6,770,957	11,722,000
BU CCC1/1466/3 Total	Matuku Takotako Sumner Centre	7,664,050	8,976,000
BU CCC1/1583/2 Total	Hornby Library	725,890	2,054,000
BU CCC1/1755/2 Total	South Library & Beckenham Service Centre	5,272,337	9,763,000
BU CCC1/1982/1 Total	Library - Linwood (Leased site)	26,833	16,651
BU CCC1/2120/1 Total	Spreydon Library	541,523	1,928,000
BU CCC1/2178/1 Total	Papanui Library & Service Centre	1,745,462	2,834,000
BU CCC1/2179/2 Total	Redwood Library & Creche	856,573	1,878,000
BU CCC1/2215/1 Total	Shirley Library & Service Centre	2,686,057	3,922,000

‘South Library Te Kete Wānanga o Wai Mōkihi - Earthquake Repair Options’ Report | Joanna Gould | June 2022



**Asset Management Plan Summary: Libraries**

<https://ccc.govt.nz/assets/Documents/The-Council/Plans-Strategies-Policies-Bylaws/Plans/Long-Term-Plan/LTP-2021-final/Asset-Management-Plan-AMP-Libraries-LTP-2021-2031.PDF>

Page 70, Figure 7-4: Libraries Sites

Facility	Year Built (Approx.)	Status	Owned	Service Centre	Bldg Area m2	Capacity	Pop Density /km2 est.	Dist to shops	Dist to Bus	Café
Akaroa	1989	Open	Leased	No	250	50	367	130	130	Yes
Aranui	2012	Open	Owned	No	700	75	1750	300	300	No
Ōrauwahata: Bishopdale	2017	Open	Owned	No	799	160	2500	50	100	No
Turanga	2017	Open	Owned	Yes	9850	1300	887	100	200	Yes
Fendalton	2000	Open	Owned	Yes	2000	300	1800	500	100	No
Te Hapua Halswell	2015	Open	Owned	Yes	3500	900	750	150	50	Yes
Hornby	1978	Open	½ Share	No	270	50	1600	120	150	No
Linwood Eastgate	0	Open	Leased	Yes	1150	230	1500	100	100	No
Lyttelton	1999	Open	Owned	Yes	388	70	300	50	100	No
New Brighton	1999	Open	Owned	No	1000	200	880	100	175	Yes
Papanui	1995	Open	Owned	Yes	1200	200	2300	200	170	No
Parklands	2004	Open	Owned	No	500	100	1800	120	50	Yes
Redwood	1970	Open	Owned	No	200	50	1800	60	30	No
Shirley	1995	Open	Owned	Yes	1060	200	2300	150	50	No
South	2003	Open	Owned	Yes	2650	600	2000	450	60	Yes
Spreydon	1972	Open	Owned	No	250	50	2900	130	130	No
Matuku Takotako: Sumner	2017	Open	Owned	yes	1800	360	430	15	15	No
Upper Riccarton	2006	Shared Use	Leased Land	No	1500	300	2800	700	130	Yes

**Shirley | Year Build: 1995, Building Area: 1060 m2, Capacity: 200, Pop Density /km2: 2300**

**South | Year Build: 2003, Building Area: 2650 m2, Capacity: 600, Pop Density /km2: 2000**





<https://ccc.govt.nz/assets/Documents/The-Rebuild/Community-facilities/CommunityFacilitiesTranche1.pdf>

Automatic Zoom

COMMUNITY FACILITIES REBUILD UNIT				
Facilities Rebuild Rebuilding our neighbourhoods			Christchurch City Council	
	Asset Group/ Type	Address	Recommended Required Work	Ward
15	Lyttelton Service Centre (integration with library)	35 London St, Lyttelton 8082	This cost excludes the already approved demolition (Council agreed to demolish 27/02/2014). Costs are for reinstating the function of the SC by incorporation into	Lyttelton/Mt Herbert
16	Lyttelton Library	18 Canterbury St, Lyttelton 8082	Lyttelton Library building. Repairs to library needed Structural and cosmetic repairs. Required before Service Centre integration	Lyttelton/Mt Herbert
17	Governors Bay Community Centre & Pottery Shed	1 Cresswell Ave, Governors Bay 8971	Council agreed to demolish 02/09/2013. Allowance for new community facility on the site	Lyttelton/Mt Herbert
18	Riccarton Community Centre	199-205 Clarence St, Riccarton, 8011	Options 2, 4, 5 considered by Council 27/03/2014. Community board favouring rebuild due to life cycle	Riccarton - Wigram
19	Upper Riccarton Library	71 Main South Rd, Sockburn, 8042	Structural and cosmetic repairs including under floor & roof	Riccarton - Wigram
20	Sockburn Recreation Centre - Squash Centre	134 Main South Rd, Sockburn, 8042	Structural repairs, strengthening and demolish changing rooms	Riccarton - Wigram
21	Shirley Community Centre	10 Shirley Rd, Shirley, 8013	Replace. Section 38 (claim insured value)	Shirley - Papanui
22	Papanui Library	5 Restell St, Papanui, 8053	Repairs and HVAC replacement	Shirley - Papanui
23	Spreydon/Heathcote Community Facility (Former St Martins Public Library)	122 Wilsons Rd, St Martins, 8022	Replace building. Council agreed to demolish 29/08/2013. Allowance made for new community facility on the wades / Wilson corner site	Spreydon - Heathcote
24	Spreydon Library	266 Barrington St, Spreydon, 8024	Structural and cosmetic repairs and strengthening	Spreydon - Heathcote
25	Opawa St Martins Toy Library	65 Sandwich Rd, Beckenham, 8023	Repair and strengthen.	Spreydon - Heathcote
26	Shirley Library	36 Marshland Road, Shirley, 8061	Cosmetic repairs	Burwood - Pegasus
27	Milton St Depot - Fire Equipment Store	245 Milton St, Sydenham, 8023	Demolish and replace	Spreydon - Heathcote
28	Duvauchelle Reserve and Campground - All Buildings	17 Seafield Rd, Duvauchelle 7581	Structural and cosmetic repairs	Akaroa/Wairewa
29	Public Toilets	Various	Repair, strengthen, demolish or replace 20 toilets around the city depending on condition and use	Public Toilets
30	Non Greenspace demolitions	Various	Demolition of 5 closed buildings which do not require replacement	Demolitions
31	Greenspace demolitions	Various	Demolition of 22 closed buildings which do not require replacement	Demolitions

'South Library Te Kete Wānanga o Wai Mōkihi - Earthquake Repair Options' Report | Joanna Gould | June 2022



### Asset Management Plan Summary: Libraries

<https://ccc.govt.nz/assets/Documents/The-Council/Plans-Strategies-Policies-Bylaws/Plans/Long-Term-Plan/LTP-2021-final/Asset-Management-Plan-AMP-Libraries-LTP-2021-2031.PDF>

Page 72, 7.3 Asset and Network Planning

"The Libraries 2025 Facilities Plan - Updated 2014 states that "Libraries will adhere to sustainable, long lasting design and ensure good return on investment". These recommendations align efficiency measures, industry best practice and cost effectiveness of new and existing buildings. All planning will maximise the potential capacity of existing facilities, and take into consideration life cycle cost of new and existing buildings."

### Facilities rebuild: Engineering reports

<https://ccc.govt.nz/the-council/future-projects/facilities-rebuild>

South Library: <https://ccc.govt.nz/assets/Documents/The-Rebuild/Community-facilities/SouthLibraryL5.pdf>

Shirley Library: <https://ccc.govt.nz/assets/Documents/The-Rebuild/Community-facilities/ShirleyLibraryL5.pdf>

Page 7, 2.3 Reference Building Type

"A general overview of the reference building type, construction era and likely earthquake risk is presented in the figure below. The Shirley Library has been constructed in 1995 and according to the figure below may have some issues according to the earthquake loads."

Page 8, 2.7.1 Level survey

The floor levels for the Shirley Library are considered to be acceptable despite being at the tolerance's limit of the first recommendation in the workroom at building's north-east. In these areas local floor slopes of up to 0.5% have been calculated. The total difference between the slab highest point and the slab lowest point is 30mm.

Code requirements covering acceptability criteria for the floors of buildings are written for new buildings and are not appropriate for older buildings which will have settled with time.

### 2.3 Reference Building Type

The Shirley library is single storey steel portal frame and tilt-up concrete panel warehouse type structure. This type of building that is very common and typically performs well when correctly designed, proportioned and detailed as Shirley Library appears to be, based on visual inspections.

A general overview of the reference building type, construction era and likely earthquake risk is presented in the figure below. The Shirley Library has been constructed in 1995 and according to the figure below may have some issues according to the earthquake loads.



Figure 1: Timeline showing the building types, approximate time of construction and likely earthquake risk. (From the Draft Guidance on DEEs of non-residential buildings by the Engineering Advisory Group)



#### 10. South Library Te Kete Wānanga o Wai Mōkihi - Earthquake Repair Options

Sustainability and Community Resilience Committee, 01 June 2022

[https://christchurch.infocouncil.biz/Open/2022/06/SACRC\\_20220601\\_AGN\\_7539\\_AT.PDF](https://christchurch.infocouncil.biz/Open/2022/06/SACRC_20220601_AGN_7539_AT.PDF)

##### 2. Officer Recommendations Ngā Tūtohu

That the Sustainability and Community Resilience Committee:

1. Direct staff to progress the design for a rebuild of the South Library Facility on its existing site.
2. Endorse the development of a concept design and costing for consideration by Council in Q1 2023.
3. Note that the advancement of the project to construction will require additional funding in Annual Plan 2023-2024 and or a Long Term Plan adjustment.

Page 32, 3.3 Functionality: A preliminary workshop was held with Council staff who manage and occupy the building on both the functionality and future operational requirements. The results of this indicated that the facility provides sufficient floor area but the use of the space is inefficient.

Page 33, 3.4 Geotechnical: Modelling and a preliminary site investigation, Attachments A and B, to inform the structural solution for repair. Modelling has revealed that the site is low risk for lateral spread but prone to liquefaction in the deep soil layers below the water table. This means that (shallow) ground improvement is not beneficial and in future seismic events the building will be prone to further differential settlement.

Page 33, 3.6 Architectural: Advice has been provided in relation to the reuse of fabric, the interface of the new structural elements with existing building elements and code compliance, Attachment D. South Christchurch Library is approaching a 20-year life span, which brings several building elements to their considered “end of life” and will require replacement in the near future.

Page 34, 3.11 Cost: There is currently a CAPEX budget of \$13.6 million on plan for the period FY22-27. The cost estimate for the proposed repair and a cost estimate for an equivalent new build on the same footprint is repair \$26.6 million vs. new build \$24.9 million.

##### Page 36, 4.5 Defer the repair or rebuild of the facility, Disadvantages

South is the only library in the network of 20 libraries not to have been either repaired or rebuilt in the last decade, following the earthquakes of 2010/11. Despite its high use, it is not at the same standard as other libraries of similar size and function with the building services at/or near end of life.

##### Page 38, 5. Detail Te Whakamahuki

5.1 The South Library and Service Centre is a busy popular community hub as demonstrated by the statistics below. Programme attendance at South has grown over the last few years from 5th highest in FY 2018-2019 to 2nd in FY 2020-2021 with 12,002 attendees.

Page 39, 5.6 It is not envisaged that further significant central government funding will be forthcoming and certainly not Capital funding to contribute to a major repair or rebuild. Note, Council did receive operational funding from the Ministry of Education when South Library was opened for a few years to support targeted learning initiatives in partnership with the schools in the local area.



<https://www.lgnz.co.nz/news-and-media/2019-media-releases/reinstated-well-beings-endorse-councils-community-focus/>

## Reinstated well-beings endorse councils' community focus

8 MAY 2019

News & Media > 2019 Media Releases > Reinstated well-beings endorse councils' community focus

Local Government New Zealand is delighted to see the Local Government (Community Well-being) Amendment Bill pass its third and final reading in Parliament last night, effectively reinstating the four aspects of community well-being – social, economic, environmental and cultural – into the Local Government Act.

Local Government New Zealand is delighted to see the Local Government (Community Well-being) Amendment Bill pass its third and final reading in Parliament last night, effectively reinstating the four aspects of community well-being – social, economic, environmental and cultural – into the Local Government Act.

While councils have largely continued to deliver across these four areas, as mandated by their constituents, the amendment provides official restoration of the four well-beings to the Local Government Act, which were removed under the last government.

It is a significant show of support from the Coalition Government for the on-going work of councils to lift the well-being of their communities.

"The reinstatement of the four well-beings is formal recognition that councils have a significant role to play in lifting the quality of life of our people, and the health of our environment," says LGNZ President Dave Cull.

"As the operational arm of government, councils deliver infrastructure vital to our economy, such as roads, three waters and housing infrastructure, cultural and social amenities such as events, parks, libraries, pools and balance the built environment with the natural environment through the RMA."

"The reinstatement of the four well-beings acknowledges that through all these services, and more, local government has a broader role in fostering liveable communities, than simply providing 'core services'."

"We commend the Government for passing this Bill, and look forward to partnering with them on the big issues facing New Zealand."

<https://newsline.ccc.govt.nz/news/story/law-change-reinforces-councils-community-focus>

Christchurch City Council Newsline

Home Community matters City life Environment Planning & building Arts & culture In pictures

### Law change reinforces Councils' community focus

Supporting communities | 8 May 2019

Share this story

Christchurch's Acting Mayor Andrew Turner is welcoming changes to the Local Government Act that reinforce the role of councils in promoting community wellbeing.

The Local Government (Community Well-being) Amendment Bill passed its third and final reading in Parliament last night, effectively reinstating the four aspects of community well-being – social, economic, environmental and cultural – into the Local Government Act.

Cr Turner says the reinstatement of the four wellbeings into the Local Government Act is recognition of the significant role that Councils play in lifting the wellbeing of their communities.

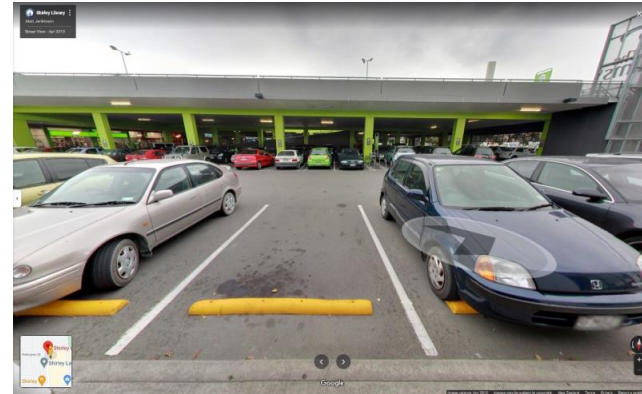
"People and communities are at the heart of everything we do so it is right that this law change acknowledges that Councils have a broader role in fostering liveable communities than simply providing core services," he says.

"It was unfortunate the four wellbeings were removed from the legislation in the first place and Christchurch City Council welcomes their reinstatement."

Deputy Mayor Andrew Turner



10  
SHIRLEY  
ROAD



‘South Library Te Kete Wānanga o Wai Mōkihi - Earthquake Repair Options’ Report | Joanna Gould | June 2022



<https://www.10shirleyroad.org.nz/where-is-our-community-centre-petition/>



Welcome

Blog

Blog Posts

Where

Who

Why

What

How

Other

Timeline

Centre Ideas

Christchurch Libraries

The “Where is our Community Centre” petition, that was presented last year to Council, as part of the Long Term Plan 2021-2031, received  
**over 1,200 residents signatures/comments.**

## “Where is our Community Centre” Petition

“Our communities lost our well used and well loved community centre at 10 Shirley Rd, following the February 2011 earthquake. We need a new community facility to serve the wider communities of North Richmond, Shirley, Mairehau, Edgware and St Albans east of Cranford Street. We the undersigned, request that Christchurch City Council work with us to rebuild our beloved community centre as soon as possible.”

<https://www.facebook.com/Where-is-Our-Community-Centre-101495294547442/>

Please sign/share this petition to ask the Christchurch City Council, for a new community facility to be built at 10 Shirley Road, Richmond, Christchurch. Thanks for your support!

<https://www.change.org/p/christchurch-city-council-a-community-centre-for-north-richmond-shirley-mairehau-edgware-st-albans-east>

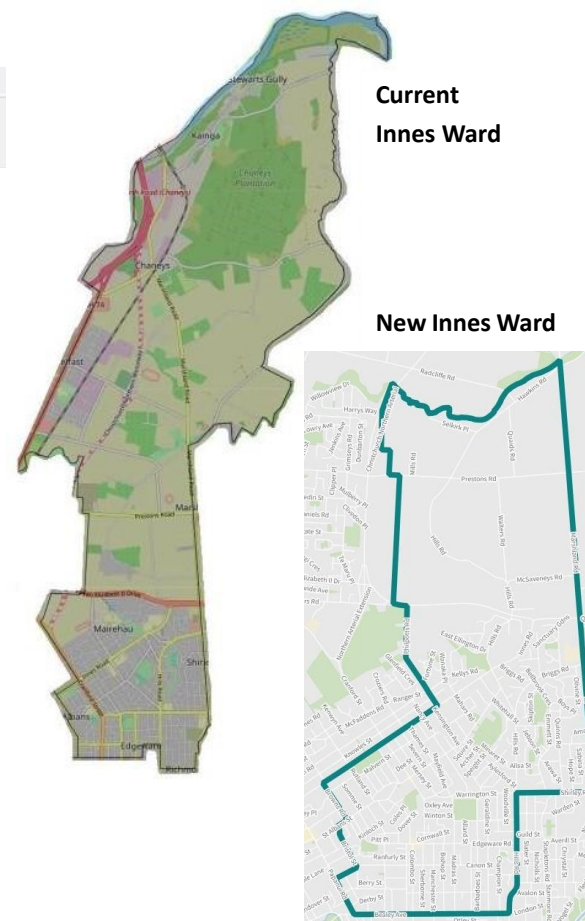
Below are the comments from supporters, sharing why signing this petition is important to them:

– “These places are hubs for community activities, and communities are so much stronger with them. Its such a shame this hasn’t been rebuilt.” Robyn W.

– “This is a important asset to the Eastern Communities” Roger E.

– “A Community Centre is a truly under estimated asset to any community. They become a major part of the community and used by many different groups. This type of centre impacts many different groups positively so to have our community centre back is a necessity to our area.” Rachael D.

‘Shirley Road Central’ verbal submission: <https://councillive.ccc.govt.nz/video/10113>



10  
SHIRLEY  
ROAD



The former Shirley Community Centre was a historic building, used for Cultural, Educational and Recreational Activities. Prior to the September 4, 2010, and February 22, 2011 earthquakes, the well-established centre was used by many community groups. It was a popular and welcoming community asset situated on multiple bus routes, reaching out to the communities of Shirley, Dallington, Richmond, Edgeware, St Albans and Mairehau.

Due to the building's damage caused by the earthquakes, the facility was demolished in 2012 and has not been replaced since, in spite of the area's growing population. In 2022 the land remains empty. Our communities have waited over a decade for a replacement facility, while watching tens of millions of dollars spent on new community facilities in other areas of the city.

Our vision is a new community hub at 10 Shirley Road. We want a modern future-focused library, with learning/meeting spaces for all ages and stages of life. We want a centre that is inclusive and accessible for all. This location is a very visible historic landmark at the beginning of Shirley Road. Leaving it empty without a building, is a constant reminder of what we have lost, that we have been forgotten & have no community legacy for the future generations.



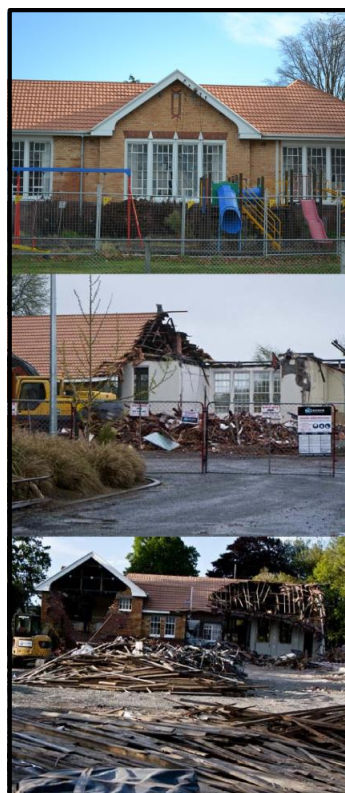
10  
SHIRLEY  
ROAD

Pre Earthquakes



Our Place, Our Identity

Post Earthquakes



Demolished 2012

Today 2022

### Why?

The communities around Shirley Road have been waiting since 2012 for a new building to be built on 10 Shirley Road.

**Why has the Council deferred funding this until 2030/31?**

**Constant Visual Reminder...We haven't rebuilt.**



Shirley Centre: Identity | Well-being | Learning  
Community Education & Support Services in Learning Libraries



‘South Library Te Kete Wānanga o Wai Mōkihi - Earthquake Repair Options’ Report | Joanna Gould | June 2022

# Council's submission on the draft National Adaptation Plan and Managed Retreat proposal

1

## Consultation

Consultation period 27 April – 3 June

National Adaptation Plan sets out actions the government will take over the next six years to build climate resilience.

➤ Final National Adaptation Plan to be published August 2022.

Managed retreat proposals: principles and objectives, roles and responsibilities.

➤ Climate Adaptation Bill to be introduced by late 2023.





## Council submission

- **Act with greater urgency and aspiration** - speed up central government delivery of actions
- **Provide local government with early clarity of our future roles and responsibilities** – following resource management, three waters, emergency management and future of local government reforms
- **Partner with local government and front foot fair and reasonable funding arrangements commensurate with our responsibilities** – consider a model similar to the NZ Land Transport Programme
- **Design tools with end-users** – to ensure they are fit for purpose
- **Take a community-centred approach** – more genuine engagement, greater emphasis on hazards literacy
- **Learn from the Canterbury Earthquake experience** – learnings including legacy issues from New Zealand's most significant retreat to date.



## Officer recommendation

That the Sustainability and Community Resilience Committee: Approve the draft Council submission to Ministry for the Environment on their draft National Adaptation Plan. (**Attachment A** *under separate cover*).

# Questions?

5

TRIM 22/496546

# Councillor Briefing

## The South Library EQ Repair Project South Library and Service Centre - Te Kete Wānanga o Wai Mōkihi

TRIM 22/496546

# **Waihoru Spreydon-Cashmere Community Board Briefing**

## **The South Library EQ Repair Project South Library and Service Centre - Te Kete Wānanga o Wai Mōkihi**

3pm Monday 16 May 2022

## Purpose

- Project progress update
- Background to the upcoming 26 May, F&P Committee report
- Outline technical details, costs, risks, opportunities, options
- Questions and answers



# Introductions

Carolyn Robertson – Head of Libraries & Information

Brent Smith – Manager Vertical Capital Delivery, Project Sponsor

Lynne Armitage – Project Manager

Helen Trappitt – Structural Engineer, Lewis Bradford

Vanessa Carswell – Architect, Jasmax

Elizabeth Neazor – Manager Legal Service Delivery

## Background - Site Overview

- Current building opened in 2003
- The site is scheduled in the Christchurch District Plan – Service Centres and Community Centres (SC 2).



## Background – EQ Damage

- Canterbury EQ sequence 2010 – 2011 damaged the building
- Rapid inspections found building strength was compromised, temporary strengthening was undertaken in 2013 to achieve 34% NBS (IL3)
- In 2016 Council selected a part repair option, noting that more investigative work was needed & the potential for insurance issues.
- 2018 project deferred until Tūranga was complete. 2020 Deferred for capital smoothing, construction now timed to follow the completion of Hornby.
- Currently in pre-project investigation phase. Re-assessed the scope & cost of repair taking into consideration insurability, construction contract advice, current building standards and sustainability.

## Existing Structure & EQ Performance

Existing Building: Single storey building with structural steel frames. Heavy, precast wall elements in some areas.

Existing Foundations: Reinforced concrete slab on-grade.

Ground Conditions: Topsoil / landfill material over sand / gravel with liquefiable layers.

EQ Damage: Precast wall connections. Slab cracking and settlement (total = 245 – 335mm / differential = 90mm). Cracking to ceiling / wall linings.

EQ Vulnerabilities: Precast walls (addressed externally with red steel props). Insufficient roof bracing. Weak / flexible steel frames.

Current EQ Rating: 34%NBS (IL3).



## Structural Repairs / Strengthening

Slab: New concrete raft slab over existing slab. Minimises excavation / disturbance of contaminated ground. Inherently re-levels floor and increases flood resilience. Endorsed by geotechnical over ground improvement. Same solution if new build option chosen.

Steel Framing: Retain existing roof but add new steel columns. Difficult to carry out other works under existing roof. Limits layout flexibility.

Bracing Structure: New steel bracing / struts to roof and walls.

Remove Precast Walls: Remove hazard and reduce seismic weight. Results in less strengthening works.

Final EQ Rating: 100%NBS (IL3). Insurable but life safety only. Limited damage reduction in smaller EQ. Inferior to equivalent new building.

# Construction

What needs to be removed and replaced for the repair option?

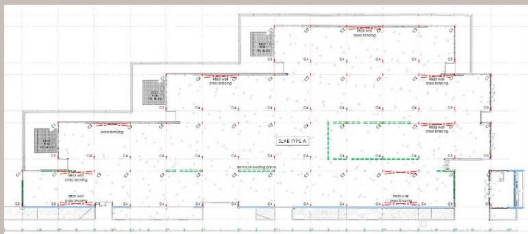
What is a building with ‘good bones’?

# Existing Building



- Insurability
- Compliance with Building Act
- Desktop assessment only

# Structural Solution



- New slab over insulation
- New larger structural columns, bracing and struts
- Revised min head height 2.35m to underside of exposed structure



## East and West External Walls



- Clash with proposed structure
- Clash of floor slab with door thresholds

# Northern Low Level Glazing



➤ Low window clash with new slab

# Northern Framed Wall



- Unknown treatment level of timber
- Non-ventilated wall system
- Potential consent and insurability issues



## South External Wall



- New structure integration required
- Any EQ damage remaining is an insurability risk
- Compromised glazing and thermal envelope



# Long Run Roof



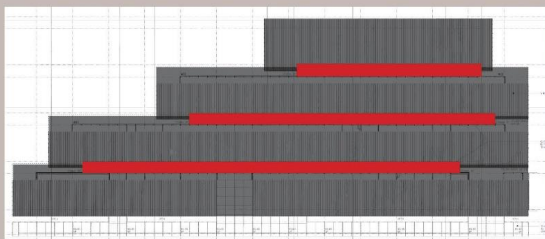
- Unknown treatment level of timber framing
- Non-ventilated roof system with cold bridges
- Metal roofing in compromised condition

# Long Run Roof



- Lightweight roof replacement
- Weight limitations due to structural limitations of repair scheme

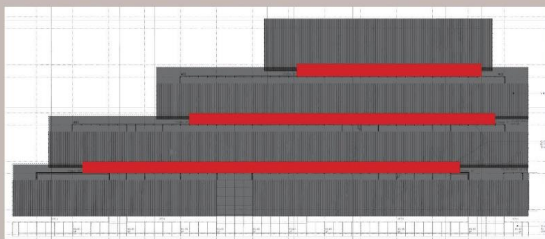
## Membrane Roof / Internal Gutters



- 90mm slab settlement creates risk to falls in gutters.
- End of life expectancy
- Does not meet current industry standards



## Membrane Roof / Internal Gutters



- Re-alignment of gutter falls
- Relevelling roof structure is complicated
- Full replacement of roof, gutters and stormwater connections

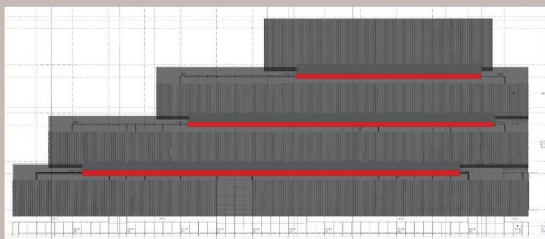


# Clerestory Windows and External Walls



- Clash with structural solution
- 90mm slab settlement poses risk to the weathertightness, durability and insurability of window systems and flashings

# Clerestory Windows and External Walls



- Only south wall retained
- Incomplete thermal envelope and warranties
- Insurability risks

# Remaining Existing Fabric - Repair





# Remaining Existing Fabric – New Build





## Architectural - Summary

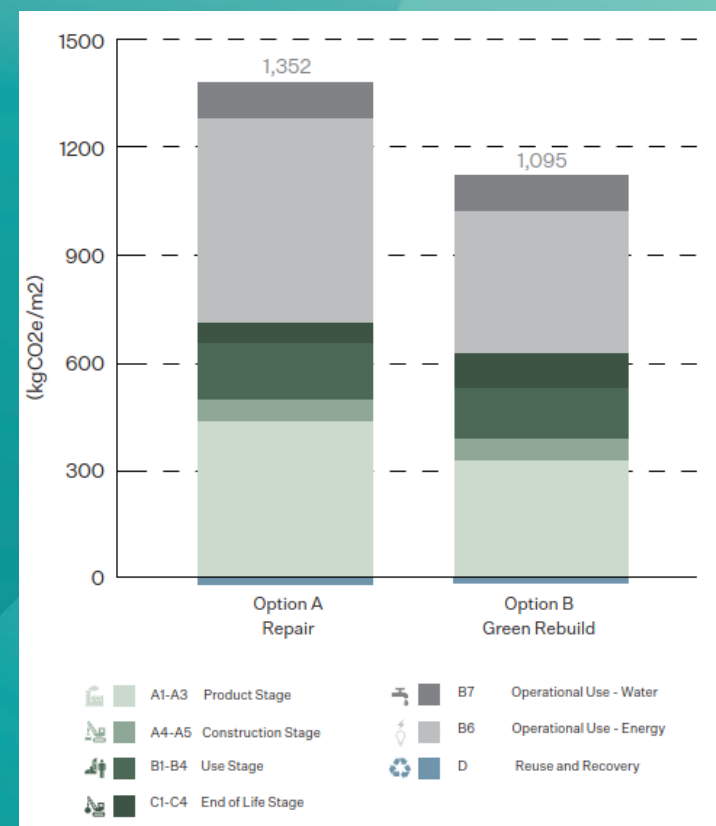
- 20 years since construction - many envelope and building services elements are near the end of their design life-span
- Significant changes in building regulations since construction – much existing fabric no longer meets modern requirements
- Fabric replacement - the extent of fabric replacement required in the repair is almost equivalent to a full replacement.
- The extensive repair required to systems has a high level of risk and unknowns – time, cost and quality
- Benefits of complete new system – energy efficiency, comfort, better suit needs of current and future customers and staff.

## Architectural - Summary

- Ongoing sewer, heating and ventilation issues can be addressed in repair scope. However there are comfort/HVAC options limitations under repair
- Improved layout - New slab offers an opportunity to rethink the internal layout of the facility noting that early feedback indicates there is sufficient space in the existing building footprint.
- Community use and operation - Repair option will limit the opportunity potential for a new layout to meet new needs with reduced operational and maintenance costs

## Carbon Assessment

- A whole of life carbon assessment which makes comparisons against CCC Ōtautahi Climate Resilience Strategy (issued 2021) has been prepared.
- Repair offers opportunity to re-life (re-use) existing fabric.
- Rebuild offers greater scope to improve the environmental performance of the structure, envelope, servicing strategy, comfort and operational performance of the building.
- The total lifecycle carbon comparison is:
  - Repair 1,352 kgCO<sub>2</sub>e/m<sup>2</sup>
  - Rebuild 1,095 kgCO<sub>2</sub>e/m<sup>2</sup>.



# Legal

## Repair:

- more difficult to scope, unforeseen damage
- Less contractual certainty
- More potential for cost & time overrun
- Issues with risk & liability in relation to old & new fabric and consents

## Rebuild:

- Greater certainty for scope and cost
- Tighter contractual terms



# Insurance

## Repair:

- Any un-repaired damage would not be covered in future events
- Needs to meet Building Act requirements where applicable

## Rebuild:

- Full cover to replacement value
- Building Act complied with as matter of course

## Cost

- Cost estimates have been developed for both a repair and new build on the same footprint
- These costs are similar because the extent of fabric replacement required in the repair is similar to a full replacement
- The cost of repair exceeds the cost of a new build because of the complexity and inefficiency of construction within an existing building

## Programme

- Repairing the South Library and Service Centre building will take about 18 months.
- The timing for construction is after Hornby in 2023, but no start date has been set. A construction timeline will be confirmed once the scope, funding and procurement plan is confirmed.
- Because of the length of any closure, we recommend setting up a temporary facility in the area if feasible.

## Next Steps

- We will report to F&P Committee, on 26 May, seeking a decision to advance the design for either a repair or a rebuild.
- When we have completed a concept design and validated the cost estimate, we will return to Council and seek a decision on the advancement of the project.
- We know that the scope of repair is more extensive than previously thought and accordingly the cost is higher. The cost exceeds the funds allocated in the LTP and so additional funding will be required.
- A decision on any additional funding will be addressed in a future Annual Plan / Long Term Plan process.



# Questions