

## **Finance and Performance Committee MINUTES ATTACHMENTS**

---

**Date:** Thursday 30 June 2022  
**Time:** 9.30am  
**Venue:** Council Chambers, Civic Offices,  
53 Hereford Street, Christchurch

---

<b>TABLE OF CONTENTS</b>	<b>PAGE</b>
<b>7. Christchurch Wastewater Treatment Plant Recovery Update Presentation</b>	
A. CWTP Recovery Update 30-06-2022 .....	3
<b>13. ChristchurchNZ Holdings Ltd - Quarter 3 2021/22 Performance Report</b>	
A. Christchurch NZ Presentation .....	34
<b>22. Draft Submission to the Panel considering the Future for Local Government Review</b>	
A. Amendments to draft submission .....	50

---



# Christchurch Wastewater Treatment Plant

Finance & Performance Committee  
Meeting  
30 June 2022

## Overview of today's presentation

---

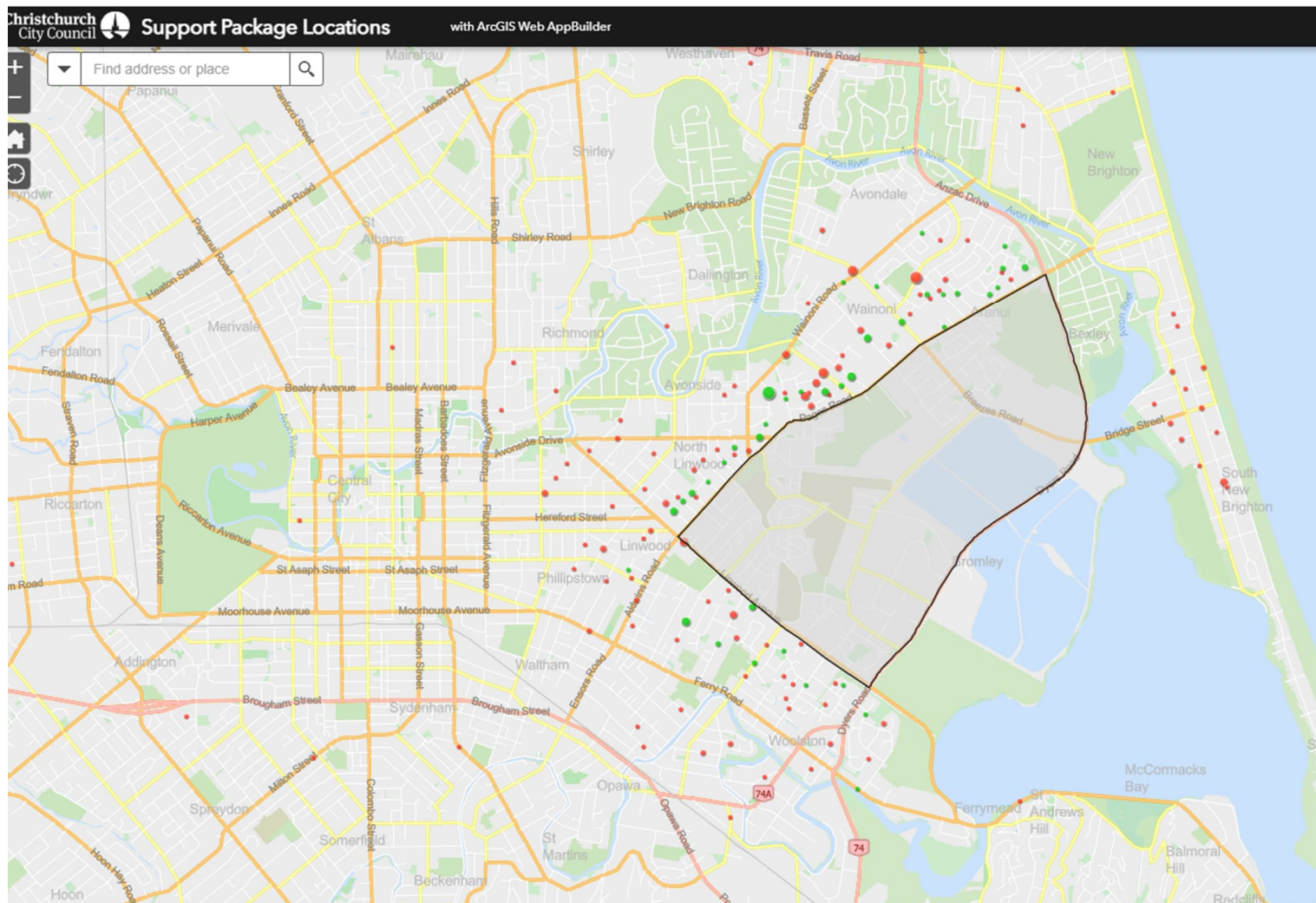
- Community Support & Social Recovery Plan
  - Support for Schools & Early Childhood Learning Centres
  - Community Public Health
  - Community feedback
  - Economic/business support
  - Environmental monitoring
  - CWTP interim operations update
  - Oxidation Ponds
  - Trickling Filters media removal
  - Communications
  - Coming up
-



## Community support and social recovery plan

---

- As of Tuesday morning there have been 2,324 in zone grants made (\$464,800.00). This equates to 69% of all in zone eligible applicants.
- There have been 151 out of zone grants made (\$30,200.00).
- The number of applications being received have slowed drastically over the last two weeks.
- Staff are currently investigating the extent of the area eligible for the grant and will present a proposal to Council 28 July.
- We are progressing development of the Social Recovery Plan with CDHB, Pegasus Health, Ministry for Social Development and Ministry of Education. We expect a first draft finalised early next week and peer reviewed with partners and the Community Advisory Group. We expect to brief council the following week and report to Council on 28 July.



## Support for schools and early childhood learning centres

---

- We have met with a number of school Principals and Managers of Early Childhood Education Centres together with the Ministry of Education to discuss support options
- The approach is being contributed to by Council and Ministry of Education as a partnership.
- The Ministry have supplied air purifiers for schools and Early Childhood Learning Centres.
- Seven schools and 19 Early Childhood Education Centres are in the process of receiving grants from Council.

## Community and Public Health (CDHB)

---

Who are we?

Support role for Council's response

Involved in two CCC-led workstreams

- Environmental monitoring, exposure and health risk assessment
- Social response

Internal project team established at CPH to co-ordinate our input with the aim of delivering coordinated advice and support to CCC and ECan regarding the Christchurch WWTP odour in order to achieve the best possible outcomes and help mitigate/reduce harm to the community

## What we have done so far

---

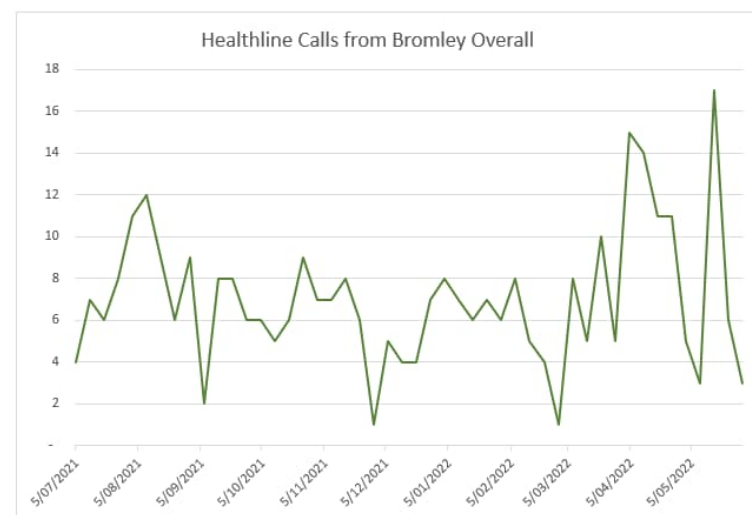
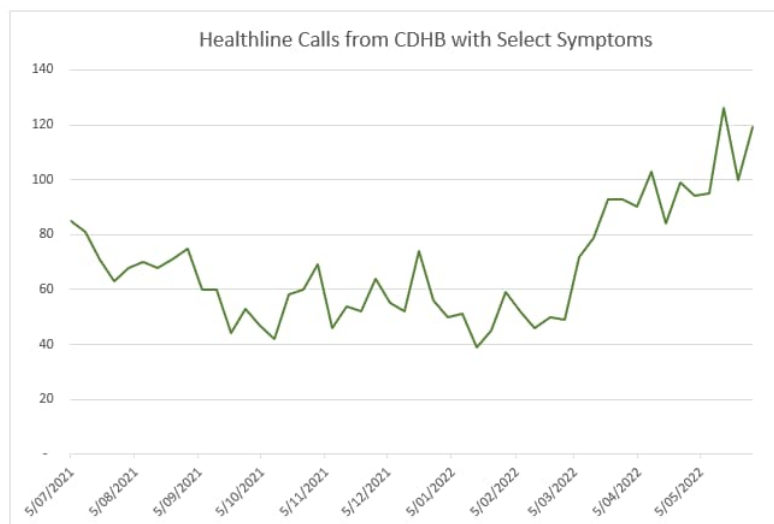
- Engaged independent Air Quality consultant to provide peer review of our advice on exposure and risk assessment
- Provided advice regarding exposure assessment and potential health effects (particularly in relation to hydrogen sulphide)
- Sought advice from other public health units which have experience of issues with foul odours
- Sought information from local GPs and Pegasus Health
- Sought information from Healthline and National Poisons Centre
- Considered request from Council to set up a health register
- Linked CCC to CDHB Planning and Funding about possibility of free GP visits

## Themes from primary care

---

- Most local practices (except one) report no increase in consultations in relation to the health effects of the odour
- Reporting of symptoms related to the odour is mostly from people attending practice for other reasons
- Commonly reported symptoms are nausea, headaches, eye and throat irritation, skin irritation, worsening asthma and sleep disturbance
- People's mental wellbeing is being affected negatively - reporting distress, frustration and sense of powerlessness
- Some practices providing support for mental health/wellbeing for patients affected by the odour

## Whakarongorau/Healthline data



## A health register

---

In considering a response to Council's request to establish a register, we:

- Reviewed the literature about registers in relation to environmental exposures
- Sought advice from an environmental health expert who was involved in Ministry response to other environmental exposure
- Attempted to identify any other similar registers in Aotearoa/New Zealand
- Considered the legal requirements around the collection and use of health information
- Considered the potential purposes of a register and whether or not this would be the most appropriate way to ensure that the health concerns of affected residents are addressed.



## A health register

---

There are several reasons why a health register may not be a suitable mechanism for systematically monitoring the health impacts of an exposure like the Christchurch WWTP stench at a community (population) level

- The true denominator (i.e. who is exposed) is unknown
- The true numerator is difficult to measure (under-reporting likely)
- Reported health effects need to be interpreted in context of baseline health status
- It is far from simple to set up and maintain a health register
- A health register will not directly address people's health needs

## Summary - health effects

---

- There is evidence from a number of sources that people exposed to the odours arising from the WWTP and ponds are experiencing both physical and mental health effects due to this exposure
- These effects are consistent with what might be expected given the measured concentrations of hydrogen sulphide at the sites monitored so far
- These health effects would be expected to resolve when production of the odour is reduced back to pre-fire levels as result of the measures being taken by CCC
- At these concentrations, it is unlikely that there will be long term health effects from exposure

## Community feedback

---

- Public meetings recap – 28 June – key themes
- Communications Advisory Group

## Economic/business support

---

- Initial contact with Chamber / ChristchurchNZ
- Follow up contact with affected business
- Impact on workers key issue at the moment
- Feedback and communication is key
- Ongoing engagement with businesses identified

---

29 June 2022

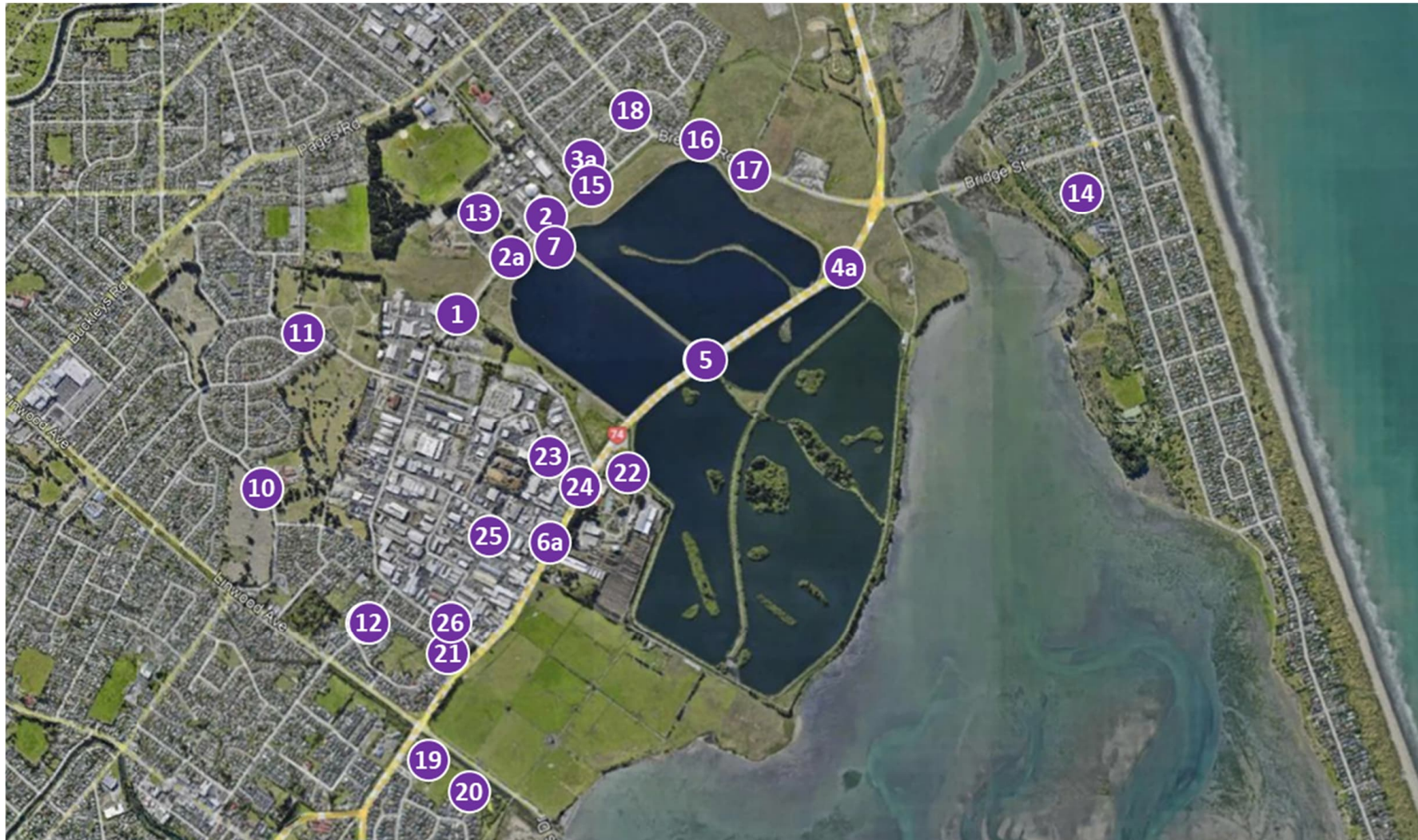
## Environmental monitoring

---

### Air Sampling

- Six rounds of grab samples have been completed – show reduced sulphur compounds
  - Hydrogen Sulphide has been shown as a good indicator gas of the area affected – consistently being emitted from the ponds and easy to monitor
  - Has been detected at levels which can cause annoyance and symptoms such as nausea, headache and eye/nose irritation.
  - Three continuous monitors are in place (Bromley School and two residential locations)
  - A further six 4G continuous monitors are on order and will be deployed mid July.
- 

29 June 2022



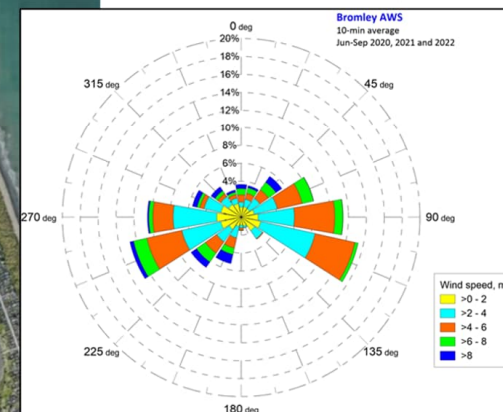




### Potential Acrulog continuous monitoring locations

- Long term logging
- Temporary (one month) site for comparison with long term sites
- Potential short term (1-3 hours) sites when nearby sites register elevated H<sub>2</sub>S in real time (exact locations dependent on wind conditions at the time)

### Jun – Sep wind conditions (2020, 2021)



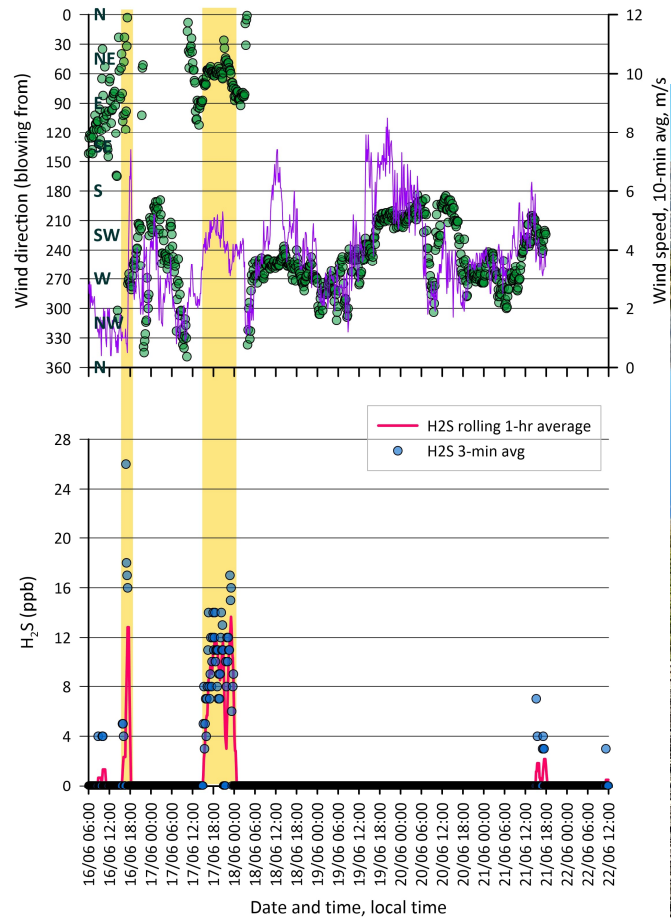
29 June 2022

## Standards and guidelines for hydrogen sulphide exposure

---

- Is noted for strong and offensive odour even at low concentrations
- Odour detection is 0.005 ppm however wide range of sensitivity and decreases with age
- At concentrations substantially above odour threshold leads to annoying and discomforting symptoms such as headaches and nausea
- Worksafe TWA (8 hour) 5 ppm and STEL (15 minute) 10 ppm
- OEHHA (Californian Office of Environmental Health Assessment) exposure level (one hour) 0.03 ppm to avoid annoyance, nuisance, headaches and nausea
- OEHHA note that 0.03 ppm will be detected by 83% people and will be discomforting to 40% people
- Ministry for the Environment ambient (one hour) guideline value 0.005 ppm to avoid odour nuisance rather than specific health effects





29 June 2022

## Bird life at the ponds

---

Councils Ecologist has confirmed that –

- Only Canada geese remain at the ponds and some shag species roost in nearby tree's,
- All other birdlife that relied on midges or their larvae as a food source have left the ponds,
- This is principally due to the collapse of the midge population at the ponds due to reduced water quality,
- An earlier Avian Botulism outbreak was not the reason, and
- Chemicals used in the fighting of the fire are not considered to be a reason.

## Environmental monitoring

---

Collaborative Meetings with Medical Officer of Health and Environment Canterbury

- These are occurring on a weekly basis.

Paint Staining

- Reports have been received on both sides of the treatment plant
- Specialist firm has carried out testing and mould types have been found to be typical for an outdoor environment with no types of concern identified
- Further investigation to determine causes of paint discolouration.

Noise

- Noise measurements from the chipper taken along Shortland Street site boundary well below Construction Standards limit
- Chipper for 2<sup>nd</sup> tank modelled and below limits



## Interim operations update



Work complete on the trickling filter by-pass pipe and testing underway.



## Interim operations update



The temporary pumps that were set up to pump-over from the aeration basins (converted clarifiers) to the existing clarifiers to support early growth of the sludge biomass are being disestablished as the 16 new permanent pumps are installed (commissioning in July).



## Interim operations update



The new pipework between the aeration basins (converted clarifiers) and the channels leading to the existing clarifiers is being installed.

## Oxidation ponds/beach samples

---

- Oxidation ponds continue to perform poorly given the high organic loads and cooler temperatures.
- Parallel works on pond recovery.
- Timeline for pond recovery.
- Wastewater discharge to the outfalls continues to exceed standard values for Faecal Coliforms and Enterococci, we are notifying Environment Canterbury and the Medical Officer of Health
- Beach sampling increased to twice per week and the results are within standard values

## Interim operations –resilience and risk mitigation

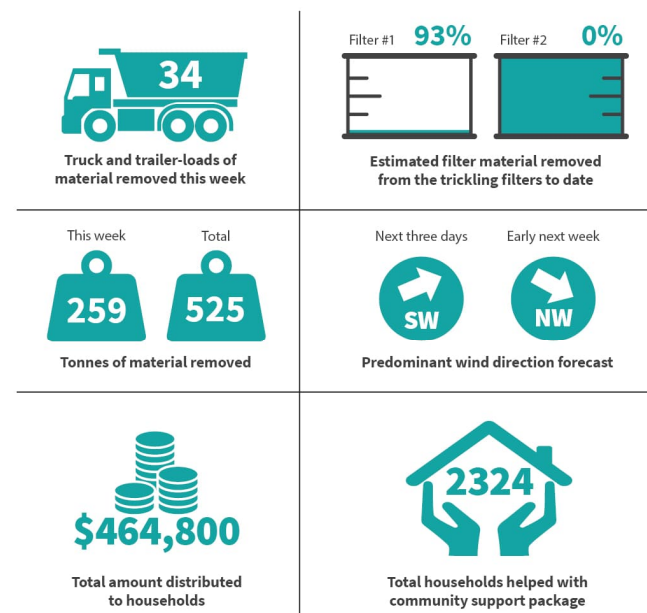
---

- Options assessment for replacement – November / December 2022
- Interim operation for up to five years
- Critical spares on site
- Increased maintenance scheduled
- Close monitoring of wastewater quality through treatment process
- Co-location of operations and capital works teams



## Trickling Filter media removal

- 525 tonne of filter material has been removed and delivered to landfill as of last Friday
- Progress to date is promising, first structure will be completely emptied by the end of this week - six weeks ahead of schedule
- Construction of ramp 2 will be completed before the end of this week - as scheduled
- Removal of material from second structure will commence next week - as scheduled.
- Currently on track to complete removal ahead of 7 September



All figures correct as of 5pm on 22 June 2022



## Filter media removal

29 June 2022

## Communications

---

- Daily rolling blog updated 2-3 times a day.
- Website updated 2-3 times a week.
- Responding to questions and updates about community support and on-site works.
- Video now up and more in the pipeline.
- Weekly e-newsletter and in hard-copy
- A2 posters updated on info panels at community providers and Eastgate Mall.
- Flyers distributed to promote community meetings

## Coming up

---

- 7 July: South New Brighton Community Meeting
- 13 July: Webinar
- Pumps installed and operating in July with progressive improved in quality of discharge to Oxidation Ponds.
- Continuous 4G air monitoring devices being rolled out over the next two weeks.
- Ramp 2 expected to be completed end of this week
- Removal of material from second Trickling Filter structure commences next week
- Investigation to determine causes of paint discolouration.
- Social Recovery Response Plan

Questions?





# QUARTERLY REPORT

1 January to 31 March 2022

Dr Therese Arseneau, Chair  
Ali Adams, CE

Tracey Wilson A/GM Destination and Attraction  
Laura Dawson GM Shared Services

ChristchurchNZ

## ECONOMIC LEADERSHIP

### Positives

- Value of exports 44.5% higher than same period 2021
- Two record breaking months of consent issuance
- Ads for jobs online reached record high

### Headwinds

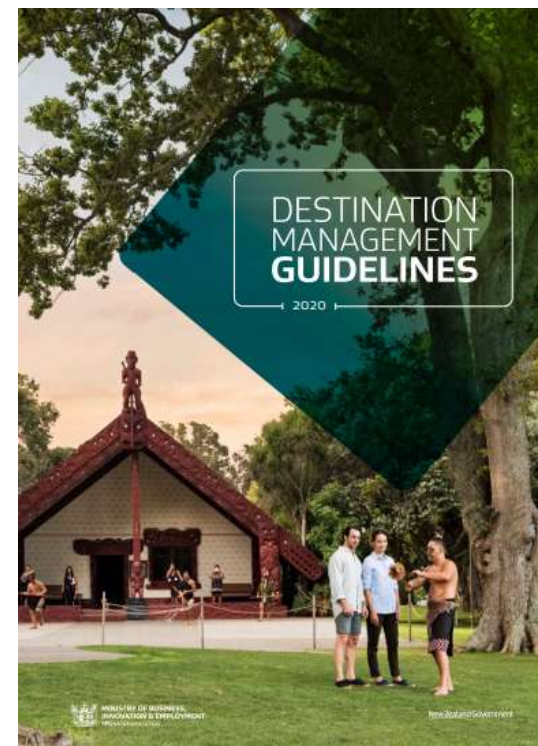
- First large outbreak of Covid: worker absenteeism; supply chain issues; reduced consumer activity
- Cost of living pressures building: annual inflation hit 6.9% (30 year high); borrowing rates rising
- Labour supply shortages
- Drop in confidence measures



# ECONOMIC LEADERSHIP

## Facilitation Role

- GC2050 and our Letter of Expectation identified three key areas for ChristchurchNZ to take the facilitation lead on:
  1. Development of a Place Brand Strategy for Christchurch
  2. Development of two Destination Management Plans – one for Greater Christchurch and a separate plan for Banks Peninsula
  3. An updated Economic Development plan for the city
- MBIE funding received for the Destination Management Plans.
- Taking a unique strategic approach to developing Place Brand Strategy and Destination Management Plans in parallel.
- RFP has closed and vendor selection is underway.
- Elected Members will receive a full briefing once negotiations are finalised.





# DOMESTIC VISITATION AND ATTRACTION SUPPORT



## Tourism planning and preparation

- ExploreCHC campaign going live Q4
- Regional partner content
- Winter campaign work

## Skilled migrant attraction

- Domestic migration and reskill campaigns planned for Q4

## Business/Commercial Attraction

- Gateway to Growth domestic activity now live

## Business events

- Preparation for Meetings 2022 tradeshow held at Te Pae including new brand

## Working with CCC and local working group on supporting COVID Recovery

- Business survival / jobs retention
- City vibrancy and Visitor economy



# INTERNATIONAL BORDER RE-OPENING

## Tourism – Re-Opening Marketing Planning

- JV content partnership with TourismNZ in AUS, PR activity in AUS
- JV winter activation with CIAL (New Zealand's Snow Highway)
- Trade market visits/TNZ Regional Showcase – AU, USA, UK/EU, Asia & AUS Ski Shows

## Skilled migrant attraction

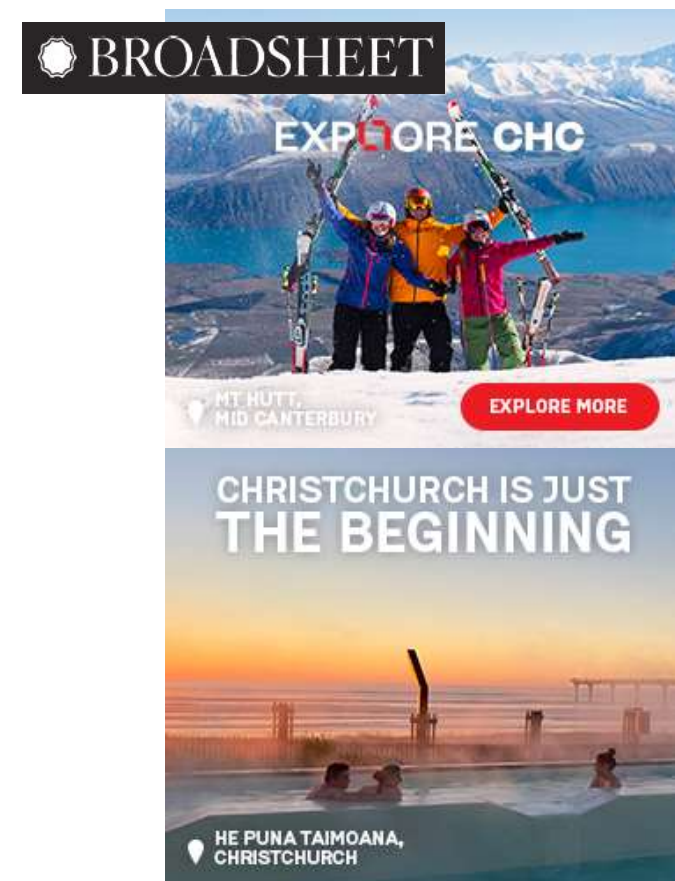
- KEA international partnership targeting expats to return to ChCh
- Planning for international skilled migrant campaign

## Business/Commercial Attraction

- Gateway to Growth AUS activity in the pipeline
- ScreenCanterburyNZ attendance at relevant overseas film festivals and trade events

## Business events

- Head of Business Events trade show in AUS March (AIME)
- Business Development Manager in Australia
- Trade market visits/TNZ Regional Showcase – AUS, Asia Pacific



## BUSINESS SUPPORT

### RBP

- ChristchurchNZ and CECC Joint Partnership successful in winning the RBP contract.
- Now planning and operationalising with the Chamber

### Tourism

- Tourism Communities: MBIE Support Recovery and Reset roll out funding has continued through to end February 2023

### Business Mentors

- We are currently negotiating with BMNZ to continue services

### Digital Boost

- MBIE Digital Boost Programme being rolled out from ChristchurchNZ, with vendors



## INNOVATION & CLUSTERS

### Te Ōhaka and Thinclab (Innovation Eco-System)

- 52 knowledge intensive businesses with high growth potential have now received incubation support this FY
- Up to 52 new jobs for the financial year
- Over \$13.4m in new venture capital attracted for startups in the financial year.
- Red Chair Campaign restarted

### Industry clusters

- Innovation challenges successfully concluded
  - Food Fibre Agritech
  - Health Tech
  - Aerospace x 2
- Cluster Workshops and activity held
  - Agri-biotech – Industry and the Research community
  - Aerospace – meetup and meeting with Minister Nash





## SKILLS PIPELINE

### Skills and Employment

- Short Term Focus – Immigration Paper sent to media and Ministers
- Medium Term Focus - Women in Work: connecting underutilised/ underemployed women with employment by inspiring, informing and connecting them with opportunities – campaign in development
- Long Term – Hopara Pathway Programme: Industry engagement component being designed by our high-tech industry

### Very tight labour market

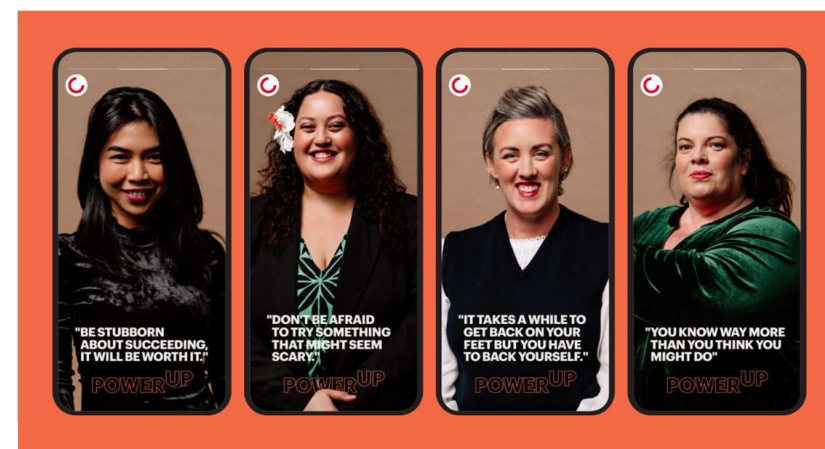
- Number of job ads online remain high, still above full employment

### Skilled migrant attraction

- KEA international partnership targeting expats to return to ChCh
- Planning for international skilled migrant campaign

### Entrepreneurship

- 27 Start Me Up participants selected to move through to the accelerator programme



# ANTARCTIC OFFICE

- Days of Ice – Christchurch's public celebration as a Gateway City scheduled for Sept/Oct 2022
- Christchurch Antarctic (Business Network) continues to grow, targeting 75 members by end June 2022
- SOFIA – Nasa's Stratospheric telescope has returned for its final season – 32 missions and 200 people
- Large scale future redevelopment continues to be planned for the ice, with opportunities for Christchurch's manufacturing and tech sectors. Korean hanger redevelopment is the latest.





## SCREEN CANTERBURYNZ



- 12 enquiries at Cannes Booth, 204 total
- Waitaha Creative Incubator developing
- Re-opened screen grant
- Awarded 6 production grants

# URBAN DEVELOPMENT

## EEDA

- Joint Council and CNZ Elected Member briefing and final decision by the F&P Committee on the integration of urban development.

## Milton Street Development

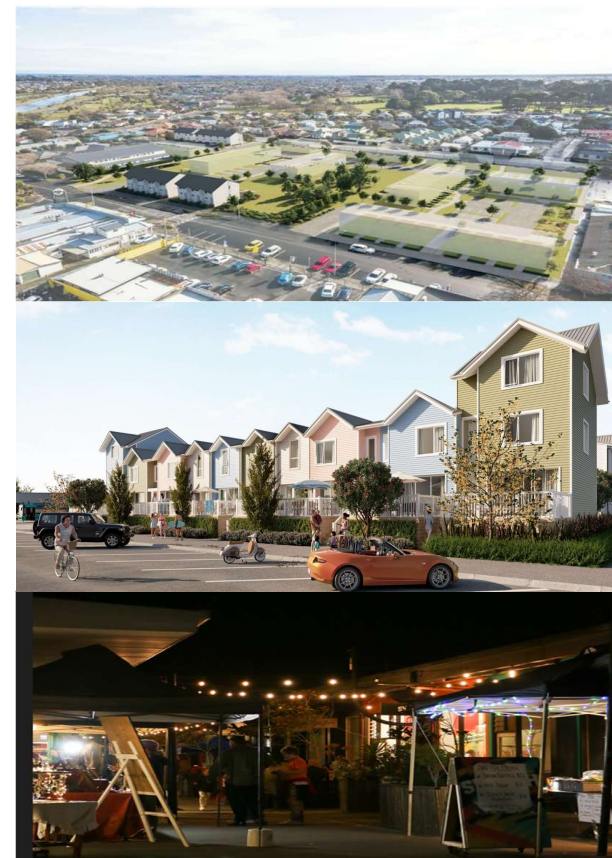
- Continuing to work with parties on a three lot subdivision and development plan for an office research campus, essential infrastructure and a comprehensive residential development.

## New Brighton Regeneration Project

- Beresford Development sites go unconditional for 66 affordable mixed tenure homes (settling April 2022).
- Seaview Development Stages 3 & 4 brought forward.
- Marketing campaign with Neat Places underway.
- Supporting Carnaby Collective, an emerging business group, local activations and events.

## Intensification Plan Change

- Provision of planning support to City Planning Unit.



# MAJOR EVENTS – ICC WOMEN’S CRICKET WORLD CUP DATA REVIEW

## Benchmark

Measure	Selected event
Visitation caused by the event	1,596 ●
Visitor nights caused by the event	8,457 ●
Spend by visitors (incl. sales tax)	\$740,460 ●
Net benefit	\$2,313,449 ●
Benefit to cost ratio	1.35 ●
Satisfaction	97% ●
Net promoter score	68 ●
Resident pride	95% ●
Resident liveability	94% ●
Visitor perception: live	53% ●
Visitor perception: visit	71% ●
Visitor perception: business	34% ●
Domestic spend per visitor night (incl. sales tax)	\$133 ●
Domestic length of stay (nights)	1.92 ●
International spend per visitor night (incl. sales tax)	\$70 ●
International length of stay (nights)	17.21 ●

● Well below average ● Below average ● Average ● Above average ● Well above average



Source: Fresh Info (Economic Analysis)





## BUSINESS EVENTS – AIME REVIEW

- **32 prescheduled appointments (PSA)** and 10 unscheduled appointments (walk ups) during the show.
- ChristchurchNZ representation at the show generated just under **\$11 million dollars** of estimated visitor spend from “hot” bid opportunities for Christchurch. The cost of attending less than \$10,000.
- ChristchurchNZ and Te Pae Christchurch Convention Centre co-sponsored the final media briefing and told the story of Christchurch & Te Pae being ready for business.



## FINANCIAL RESULT TO 31 DECEMBER

CNZH Financial Summary \$000's	Actual Nine Months to Mar 2021	Budget Nine Months to Mar 2021	Budget Twelve Months to June 2022
<i>Unaudited, per Management Accounts</i>			
CCC Funding	11,926	11,926	15,901
Other Operating Revenue (including interest and other gains/losses)	4,533	5,780	7,282
Operating Expenditure	(13,999)	(19,061)	(25,290)
Loss on Investments	54		-
<b>Total Surplus/(Deficit) before tax</b>	<b>2,514</b>	<b>(1,355)</b>	<b>(2,107)</b>

- Surplus \$2.514m, \$3.8m ahead of budgeted loss
- Major component of underspend is due to cancellation or postponement of major and business events
- These events are largely central government funded eg SailGP (see impacted KPIs/LoS as a result of underspend)



## LEVELS OF SERVICE AND KEY PERFORMANCE INDICATORS

**24 out of 29 level of service measure are on track or achieved**

**Five levels of service have been impacted by COVID and are unlikely to recover by year end**

- Initiatives to support Christchurch as a more attractive and sustainable visitor destination
- Major event seeding round
- Destination product offerings, experience or itineraries developed
- Investment secured into destination promotion and product development
- People using city narrative assets





**THANK YOU**

Item 22 Draft Submission suggested amended wording

9.→ We also recommend further examination of models such as the Public Transport Operating Model (PTOM) which have severe limitations and have not assisted local government in promoting active and public transport in order to meet its climate adaptation and wellbeing goals. ~~As this example demonstrates, the competitive market model has not always worked well in supporting local public transport delivering outcomes for local communities.~~¶

42.→ Many cities in Aotearoa New Zealand are, due to their coastal location, uniquely vulnerable to natural hazards. Christchurch is the most at risk community in New Zealand in terms of homes and infrastructure likely to be affected by sea level rise and rising water tables. This is a significant burden for our community to shoulder and the effects will impact on Canterbury and the South Island rather than just certain parts of Christchurch. ~~A sensible, partnership-based approach is needed to spread the burden equitably. We need a more effective way for communities to have their say about their future.~~¶