

Waihoru
Spreydon-Cashmere Community Board
AGENDA

Notice of Meeting:

An ordinary meeting of the Waihoru Spreydon-Cashmere Community Board will be held on:

Date: **Wednesday 18 May 2022**

Time: **8am**

Venue: **Audio/Visual Link**

Under the current provisions of the Covid-19 Protection Framework (the Traffic Alert system), meeting attendance is only possible via an audio/visual link or by viewing a livestream of the meeting

<https://www.youtube.com/channel/UCGweLMco4E1iUpXZ7voUgA>

Please request access details from Marie.Byrne@ccc.govt.nz for the audio/visual link.

Membership

Chairperson	Karolin Potter
Deputy Chairperson	Lee Sampson
Members	Melanie Coker
	Keir Leslie
	Tim Scandrett
	Callum Ward

11 May 2022

Matthew McLintock
Manager Community Governance Team
941 6231
Matthew.McLintock@ccc.govt.nz
www.ccc.govt.nz

Note: The reports contained within this agenda are for consideration and should not be construed as Council policy unless and until adopted. If you require further information relating to any reports, please contact the person named on the report.

To view copies of Agendas and Minutes, visit:

<https://www.ccc.govt.nz/the-council/meetings-agendas-and-minutes/>



Ōtautahi-Christchurch is a city of opportunity for all

Open to new ideas, new people and new ways of doing things – a city where anything is possible

Principles

Being open, transparent and democratically accountable	Promoting equity, valuing diversity and fostering inclusion	Taking an inter-generational approach to sustainable development, prioritising the social, economic and cultural wellbeing of people and communities and the quality of the environment, now and into the future	Building on the relationship with Te Rūnanga o Ngāi Tahu and the Te Hononga-Council Papatipu Rūnanga partnership, reflecting mutual understanding and respect	Ensuring the diversity and interests of our communities across the city and the district are reflected in decision-making	Actively collaborating and co-operating with other local, regional and national organisations
--	---	--	---	---	---

Community Outcomes

Resilient communities Strong sense of community Active participation in civic life Safe and healthy communities Celebration of our identity through arts, culture, heritage, sport and recreation Valuing the voices of all cultures and ages (including children)	Liveable city Vibrant and thriving city centre Sustainable suburban and rural centres A well connected and accessible city promoting active and public transport Sufficient supply of, and access to, a range of housing 21st century garden city we are proud to live in	Healthy environment Healthy water bodies High quality drinking water Unique landscapes and indigenous biodiversity are valued and stewardship exercised Sustainable use of resources and minimising waste	Prosperous economy Great place for people, business and investment An inclusive, equitable economy with broad-based prosperity for all A productive, adaptive and resilient economic base Modern and robust city infrastructure and community facilities
--	---	--	---

Strategic Priorities

Enabling active and connected communities to own their future	Meeting the challenge of climate change through every means available	Ensuring a high quality drinking water supply that is safe and sustainable	Accelerating the momentum the city needs	Ensuring rates are affordable and sustainable
---	---	--	--	---

Ensuring we get core business done while delivering on our Strategic Priorities and achieving our Community Outcomes

Engagement with the community and partners	Strategies, Plans and Partnerships	Long Term Plan and Annual Plan	Our service delivery approach	Monitoring and reporting on our progress
--	------------------------------------	--------------------------------	-------------------------------	--

Part A	Matters Requiring a Council Decision
Part B	Reports for Information
Part C	Decisions Under Delegation

TABLE OF CONTENTS

Karakia Tīmatanga	4
Waiata	4
C 1. Apologies Ngā Whakapāha	4
B 2. Declarations of Interest Ngā Whakapuaki Aronga	4
C 3. Confirmation of Previous Minutes Te Whakaāe o te hui o mua	4
B 4. Public Forum Te Huinga Whānui	4
B 5. Deputations by Appointment Ngā Huinga Whakaritenga.....	4
B 6. Presentation of Petitions Ngā Pākikitanga	4
B 7. Waihoru Spreydon-Cashmere Community Board Correspondence - Potential Re-Naming of Marylands Reserve, Marylands Place, Nazareth Avenue and Magdala Place	11
B 8. Briefing - Adult Playground Feasibility Study	13

STAFF REPORTS

C 9. 79 Hoon Hay Road - Proposed No Stopping Restrictions.....	15
C 10. Waihoru Spreydon-Cashmere Community Board Discretionary Response Fund 2021/22: Huntsbury Community Centre, Graeme Dingle Foundation Canterbury, Cashmere Bowling Club.....	21
B 11. Waihoru Spreydon-Cashmere Community Board Area Report - May 2022	27
B 12. Elected Members' Information Exchange Te Whakawhiti Whakaaro o Te Kāhui Amorangi.....	53
Karakia Whakamutunga	

Karakia Tīmatanga

1. Apologies Ngā Whakapāha

At the close of the agenda no apologies had been received.

2. Declarations of Interest Ngā Whakapuaki Aronga

Members are reminded of the need to be vigilant and to stand aside from decision making when a conflict arises between their role as an elected representative and any private or other external interest they might have.

3. Confirmation of Previous Minutes Te Whakaāe o te hui o mua

That the minutes of the Waihoru Spreydon-Cashmere Community Board meeting held on [Tuesday, 3 May 2022](#) be confirmed (refer page 5).

4. Public Forum Te Huinga Whānui

A period of up to 30 minutes will be available for people to speak for up to five minutes on any issue that is not the subject of a separate hearings process.

4.1 Spreydon Tennis Club

Kelly Perazzolo will speak on behalf of the Spreydon Tennis Club regarding the condition of the parking area by the tennis courts at Spreydon Domain.

5. Deputations by Appointment Ngā Huinga Whakaritenga

Deputations may be heard on a matter or matters covered by a report on this agenda and approved by the Chairperson.

There were no deputations by appointment at the time the agenda was prepared.

6. Presentation of Petitions Ngā Pākikitanga

There were no petitions received at the time the agenda was prepared.

Waihoru Spreydon-Cashmere Community Board OPEN MINUTES

Date:	Tuesday 3 May 2022
Time:	5pm
Venue:	Audio/Visual Link

Present

Chairperson	Karolin Potter
Deputy Chairperson	Lee Sampson
Members	Melanie Coker
	Keir Leslie
	Tim Scandrett
	Callum Ward

Matthew McLintock
Manager Community Governance Team
941 6231
Matthew.McLintock@ccc.govt.nz
www.ccc.govt.nz

To view copies of Agendas and Minutes, visit:
www.ccc.govt.nz/the-council/meetings-agendas-and-minutes/

Part A Matters Requiring a Council Decision

Part B Reports for Information

Part C Decisions Under Delegation

Secretarial Note:

It is noted that this meeting was held via audio/visual link on the Zoom platform due to the country being under the COVID-19 Protection framework (Traffic Light) on the date the meeting was scheduled. The meeting was also livestreamed and recorded on the Board's You Tube channel. These minutes provide a written summary of the meeting proceedings.

Karakia Tīmatanga: Callum Ward

The agenda was dealt with in the following order.

1. Apologies Ngā Whakapāha

Part C

There were no apologies.

2. Declarations of Interest Ngā Whakapuaki Aronga

Part B

There were no declarations of interest recorded.

3. Confirmation of Previous Minutes Te Whakaāe o te hui o mua

Part C

Community Board Resolved SCCB/2022/00019

That the minutes of the Waihoru Spreydon-Cashmere Community Board meeting held on Wednesday, 13 April 2022 be confirmed.

Lee Sampson/Keir Leslie

Carried

4. Public Forum Te Huinga Whānui

Part B

There were no public forum presentations.

5. Deputations by Appointment Ngā Huinga Whakaritenga

Part B

There were no deputations by appointment.

6. Presentation of Petitions Ngā Pākikitanga

Part B

There was no presentation of petitions.

7. Submission on Draft District Plan Changes

Board Comment

1. The Community Board Advisor spoke to the report and advised noted that proposed changes to the District Plan are currently open for consultation. The changes are: The Draft Housing and Business Choice Plan Change; The Draft Coastal Hazards Plan Change; The Draft Heritage Plan Change and The Draft Radio Communications Pathways Plan Change.
2. Board Members agreed to submit on the proposed changes noting that Councillors Coker and Scandrett would not participate in the submission process.

Community Board Resolved SCCB/2022/00020 (Original officer recommendation accepted without change.)

Part C

That the Waihoru Spreydon-Cashmere Community Board:

1. Receives the information in the Submission on the Council's Draft District Plan Changes report.
2. Decides to provide a submission on the Council's Draft District Plan Changes, and delegate authority to the Chairperson and Deputy Chairperson to approve the submission.

Callum Ward/Keir Leslie

Carried

8. Elected Members' Information Exchange Te Whakawhiti Whakaaro o Te Kāhui Amorangi

Part B

Board members shared the following information:

A Board member attended the Westmorland Residents Association meeting.

A Board member shared information regarding the opening of Addington School's new playground and outdoor play areas.

A Board member noted that the Maltworks building on Colombo Street was affected by flooding due to a burst water main which shut down Colombo Street. Props and costumes have been lost. The surrounding community has been supportive in assisting with clean ups and a 'give a little' page has been created. Other Board members were invited to engage with the Malthouse Childrens Theatre Trust.

A Board member noted that a heavy macrocarpa table had been stolen from the Mt Vernon carpark in the latest surge in thefts from the area. Installing cameras was identified as an option, however, it was noted that a number of issues still need to be considered.

Board members noted that there have been two recent dog attacks reported in the Board area. A Board member suggested that providing information to the community on dog owner responsibility and bylaws could be useful.

A Board member attended Hoon Hay Community Centre's Easter Egg Hunt.

A Board member noted that Annual Plan hearings are about to start.

A Board member met with a resident living opposite Hoon Hay Park who undertakes maintenance and clean up at the Park. The member suggested that Parks Rangers could work with the resident to assist with disposal of the rubbish and garden waste collected by the resident. A link with the Hoon Hay Residents Association was also provided to the resident.

A Board member noted that the Addington Neighbourhood Association had been invited to participate in a Brougham Street Bridge Feedback Group.

A Board member noted that excess water use charges would start from July and queried whether sufficient information had been relayed to the community about these including the threshold for exemption applications.

Board members spoke about conversations with Brookfield who are undertaking the development on Selwyn Street opposite the shops. The developers expressed an interest on talking to the Board about how working with the community on projects such as tree lined streets to slow vehicles could be integrated into developments.

A Board member noted that he had been communicating with Council staff regarding crime prevention camera installation and operation controls.

A Board member relayed a conversation with the Chief Executive Officer of Enable regarding the installation of fibre to hill areas. It is hoped that installation into Huntsbury and Worsley areas could commence in two weeks to facilitate connectivity from August.

A Board member shared some of the history of Bradford Park.

8.1 Vaping Retailers

Board members noted further frustration from residents regarding the opening of vape shops in Addington and queried whether changes to the District Plan that could restrict the distance between shops could be a response.

The Board agreed to request a briefing on current and pending restrictions on vaping through smokefree legislation.

Part B

That the Waihoru Spreydon-Cashmere Community Board request a briefing on current and pending restrictions on vaping through smokefree legislation.

8.2 Heathcote River Stopbanks

A Board member relayed concerns over the proposal not to install planned stopbanks along the Ōpāwaho Heathcote River. A report regarding this is due to be considered at Council's 5 May 2022 meeting. Board members noted that stopbanks were a flood protection measure for residents living on streets affected by flooding events. Board members expressed a wish to have a greater understanding of the technical aspects of floodplain management along the Ōpāwaho Heathcote River catchment.

Board members requested a briefing on technical aspects of floodplain management along the Ōpāwaho Heathcote River, particularly in regards to the effectiveness of stopbanks to prevent future flooding events.

Part B

That the Waihoru Spreydon-Cashmere Community Board request a staff briefing on technical aspects of floodplain management along the Ōpāwaho Heathcote River catchment.

Karakia Whakamutunga: Callum Ward

Meeting concluded at 5:45pm.

CONFIRMED THIS 18th DAY OF MAY 2022

KAROLIN POTTER
CHAIRPERSON

7. Waihoru Spreydon-Cashmere Community Board Correspondence - Potential Re-Naming of Marylands Reserve, Marylands Place, Nazareth Avenue and Magdala Place

Reference / Te Tohutoro: 22/509909

Report of / Te Pou
Matua: Amy Hart, Community Board Advisor, amy.hart@ccc.govt.nz

General Manager /
Pouwhakarae: Mary Richardson, General Manager Customer & Community,
mary.richardson@ccc.govt.nz

1. Purpose of Report Te Pūtake Pūrongo

Correspondence has been received from:

Name	Subject
Sam Benton, resident	Potential Re-Naming of Marylands Reserve, Marylands Place, Nazareth Avenue and Magdala Place

2. Officer Recommendations Ngā Tūtohu

That the Spreydon-Cashmere Community Board:

1. Receive the correspondence from Sam Benton, resident, in relation to potential re-naming of Marylands Reserve, Marylands Place, Nazareth Avenue and Magdala Place.

Attachments Ngā Tāpirihanga

No.	Title	Page
A ↓	Correspondence - Potential Re-Naming of Marylands Reserve, Marylands Place, Nazareth Avenue and Magdala Place	12

From: Sam Benton
Sent: Saturday, 26 March 2022 10:28 am
To: Wells, Jo
Subject: RE: Marylands reserve and place

Dear Mrs Wells,

I read with some concern the recent Stuff article about the application to amend the street names of Marylands Reserve, Marylands Place, Nazareth Avenue and Magdala Place:

<https://www.stuff.co.nz/national/127857657/marylands-reserve-and-street-to-keep-name-of-school-where-abuse-occurred-for-now>

Last month I presented evidence to the Royal Commission of Inquiry into Abuse in Care on the experiences of vulnerable disabled young boys at Marylands School. I urge you to watch the recording of my evidence, and in particular read my detailed statement, both of which can be found here: <https://www.abuseincare.org.nz/our-progress/library/v/363/witness-statements-of-sonja-cooper-and-sam-benton-for-the-marylands-school-public-hearing>

Every single person at the Marylands hearing, including the representatives of the Catholic Church and the St John of God Order, accepted that horrific abuse occurred at Marylands School. That is beyond question, and well-publicised domestically and internationally:

<https://www.theguardian.com/world/2022/feb/01/new-zealands-catholic-church-admits-14-of-clergy-have-been-accused-of-abuse-since-1950>

As I understand it, the Waihoru Spreydon-Cashmere Community Board has indicated that you will review the renaming request once the Royal Commission issues its final report, which I understand will not be in the middle of 2023. However, if you had watched any of the evidence before the Royal Commission, I believe you would understand the need to act urgently. Hundreds of disabled boys suffered severe physical and sexual abuse while at Marylands. Every day that the Christchurch City Council delays in taking action to remove these four street names that memorialises their abusers, is another day that these men suffer reminders of what happened to them and of the systems that refused to believe or listen to their stories, and which still invalidate their experiences today.

To put it plainly, the name 'Marylands' will never again be associated or remembered as being a place of hospitality, but of brutality. You now have the opportunity to bring some form of healing to those that the Church, and the wider Christchurch community, have brutalised for many years, and to rewrite this sad corner of Christchurch's history. I urge you to act promptly.

I would be happy to speak with you about this further, if it would assist.

Regards,

Sam Benton

8. Briefing - Adult Playground Feasibility Study

Reference / Te Tohutoro: 22/442134

Report of / Te Pou
Matua:

Amy Hart, Community Board Advisor, amy.hart@ccc.govt.nz

General Manager /
Pouwhakarae:

Mary Richardson, General Manager Citizen and Community,
mary.richardson@ccc.govt.nz

1. Purpose of Report Te Pūtake Pūrongo

The Board will be briefed on the following:

Subject	Presenter(s)	Unit/Organisation
Adult Playground Feasibility Study	Jill Borland	Enable Change

2. Officer Recommendations Ngā Tūtohu

That the Waihoru Spreydon-Cashmere Community Board:

1. Notes the information supplied during the Briefing – Adult Playground Feasibility Study.

Attachments Ngā Tāpirihanga

There are no attachments to this report.

9. 79 Hoon Hay Road - Proposed No Stopping Restrictions

Reference Te Tohutoro: 22/430606

Report of Te Pou Matua: Toni Dakers, Traffic Engineer, toni.dakers@ccc.govt.nz

General Manager Jane Davis, General Manager Infrastructure, Planning & Regulatory

Pouwhakarae: jane.davis@ccc.govt.nz

1. Purpose of the Report Te Pūtake Pūrongo

- 1.1 The purpose of this report is for the Waihoru Spreydon-Cashmere Community Board to consider options to improve safety and visibility at the access to Pennylane Early Childhood Centre at 79 Hoon Hay Road. This report has been written in response to a request from parents of children attending the Early Childhood centre.
- 1.2 The decisions in this report are of low significance in relation to the Christchurch City Council's Significance and Engagement Policy. The level of significance was determined by the low level of impact and low number of people affected by the recommended decision.
- 1.3 The community engagement and consultation outlined in this report reflect the assessment.
- 1.4 The recommended option is to install no stopping restrictions in accordance with Attachment A.

2. Officer Recommendations Ngā Tūtohu

That the Waihoru Spreydon-Cashmere Community Board:

1. Approve, pursuant to Clause 7 of the Christchurch City Council Traffic and Parking Bylaw 2017, that the stopping of vehicles be prohibited at all times on the north east side of Hoon Hay Road, commencing at a point 9.5 metres south east of its intersection with Bencard Place and extending in a north west direction for a distance of 9 metres.
2. Revoke any previous resolutions pertaining to traffic controls made pursuant to any bylaw to the extent that they are in conflict with the traffic controls described in resolution 1 above.
3. Approve that these resolutions take effect when parking signage and/or road markings that evidence the restrictions described in the staff report are in place (or removed in the case of revocations).

3. Reason for Report Recommendations Ngā Take mō te Whakatau

- 3.1 Safety concerns have been identified/raised for vehicles exiting 79 Hoon Hay Road due to parked vehicles obstructing visibility.
- 3.2 This location accesses the car park for parents picking up / dropping off children at the Early Childhood Centre, with peak pick up / drop off times largely coinciding with peak periods on the adjacent road network. The site is located immediately opposite the intersection of Hoon Hay Road / Bencard Place. There are therefore multiple turning movements occurring in this immediate area.
- 3.3 The issue is compounded by the grade of the access which drops down relatively sharply at the kerb. Drivers have an initial view of traffic when exiting, however when dropping down to road level and making a final check before turning, visibility is poor if vehicles are parked in close proximity to the access.

- 3.4 Up to three vehicles can currently be parked along the street frontage of 79 Hoon Hay Road. The proposal will retain space for two vehicles.
- 3.5 Implementing the noted recommendations will lead to a reduction in the risk of a crash by improving sightlines for drivers turning onto Hoon Hay Road.
- 3.6 The recommendations in this report will help to achieve the desired community outcome of a well-connected and accessible city through improved road safety.

4. Alternative Options Considered Ētahi atu Kōwhiringa

- 4.1 Maintain the status quo – Currently drivers are only legally required to park one metre from the access
- 4.2 The advantages of this option include:
 - 4.2.1 Retains one on-street parking space.
- 4.3 The disadvantages of the option include:
 - 4.3.1 Does not address the identified safety issue of parked vehicles obstructing visibility.

5. Detail Te Whakamahuki

- 5.1 Hoon Hay Road is a Minor Arterial carrying around 1000 vehicles per hour during the peak hours.
- 5.2 There is a relatively high parking demand during week days in this area, including along the frontage of 79 Hoon Hay Road.
- 5.3 There have been no crashes reported at this access in the last five years.
- 5.4 Approval is required by the Waihoru Spreydon-Cashmere Community Board.
- 5.5 If approved, the recommendations will be implemented within the current financial year.

Community Views and Preferences

- 5.6 The consultation documents were emailed to the group of parents who raised the original concerns. Three submissions were received, two in support. One further submission was supportive of installing No Stopping restrictions however they requested these be extended along the whole frontage.
- 5.7 The proposal is intended to improve sight lines while retaining as much on street parking as possible. As per the notes in 3.3 above, drivers are able to observe gaps in traffic at the top of the access way however they are currently required to progress into the traffic lane to confirm the way is clear immediately before turning (if a vehicle is parked by the access). The proposal will improve visibility at this point.
- 5.8 No feedback was received from the owners of 79 Hoon Hay Road.
- 5.9 The Team Leader Parking Compliance supports the preferred option.
- 5.10 The do nothing option is inconsistent with community requests to improve visibility for drivers turning onto Hoon Hay Road.

6. Policy Framework Implications Ngā Hiraunga ā- Kaupapa here

Strategic Alignment Te Rautaki Tīaroaro

- 6.1 Council's strategic priorities have been considered in formulating the recommendations in this report, however this area of work is not specifically covered by an identified priority.

6.2 This report supports the [Council's Long Term Plan \(2021 - 2031\)](#):

6.2.1 Activity: Transport

- Level of Service: 10.5.1 Limit deaths and serious injury crashes per capita for cyclists and pedestrians - ≤ 12 crashes per 100,000 residents

Policy Consistency Te Whai Kaupapa here

6.3 The recommendations in this report are consistent with the [Christchurch Suburban Parking Policy](#).

Impact on Mana Whenua Ngā Whai Take Mana Whenua

6.4 The effects of this proposal upon Mana Whenua are expected to be insignificant.

Climate Change Impact Considerations Ngā Whai Whakaaro mā te Āhuarangi

6.5 This proposal does not have any significant effect upon carbon emissions and Climate Change.

Accessibility Considerations Ngā Whai Whakaaro mā te Hunga Hauā

6.6 This proposal improves accessibility for pedestrians/drivers/cyclists, by improving visibility between drivers exiting this property and those travelling on Hoon Hay Road.

7. Resource Implications Ngā Hīraunga Rauemi

Capex/Opex Ngā Utu Whakahaere

- 7.1 Cost to Implement – approximately \$20 for line marking and \$750 for investigation and preparation of this report.
- 7.2 Maintenance/Ongoing costs – Approximately \$20 per annum for line marking renewal.
- 7.3 Funding Source – Traffic Operations Team Traffic Signs and Markings budget.

Other

- 7.4 Not applicable

8. Legal Implications Ngā Hīraunga ā-Ture

Statutory power to undertake proposals in the report Te Manatū Whakahaere Kaupapa

- 8.1 Part 1, Clause 7 of the Christchurch City Council Traffic and Parking Bylaw 2017 provides Council with the authority to install parking restrictions by resolution.
- 8.2 The Community Boards have delegated authority from the Council to exercise the delegations as set out in the Register of Delegations. The list of delegations for the Community Boards includes the resolution of stopping restrictions and traffic control devices.
- 8.3 The installation of any signs and/or markings associated with traffic control devices must comply with the Land Transport Rule: Traffic Control Devices 2004.

Other Legal Implications Ētahi atu Hīraunga-ā-Ture

- 8.4 There is a legal context, issue or implication relevant to this decision.
- 8.5 This specific report has not been reviewed and approved by the Legal Services Unit however the report has been written using a general approach previously approved of by the Legal Services Unit, and the recommendations are consistent with the policy and legislative framework outlined in sections 8.1 – 8.3.

9. Risk Management Implications Ngā Hīraunga Tūraru

9.1 None Identified.

Attachments / Ngā Tāpirihanga

No.	Title	Page
A ↓	79 Hoon Hay Road - Proposed No Stopping Restrictions	19

In addition to the attached documents, the following background information is available:

Document Name	Location / File Link
<enter document name>	<enter location/hyperlink>
<enter document name>	<enter location/hyperlink>

Confirmation of Statutory Compliance / Te Whakatūturutanga ā-Ture

Compliance with Statutory Decision-making Requirements (ss 76 - 81 Local Government Act 2002).

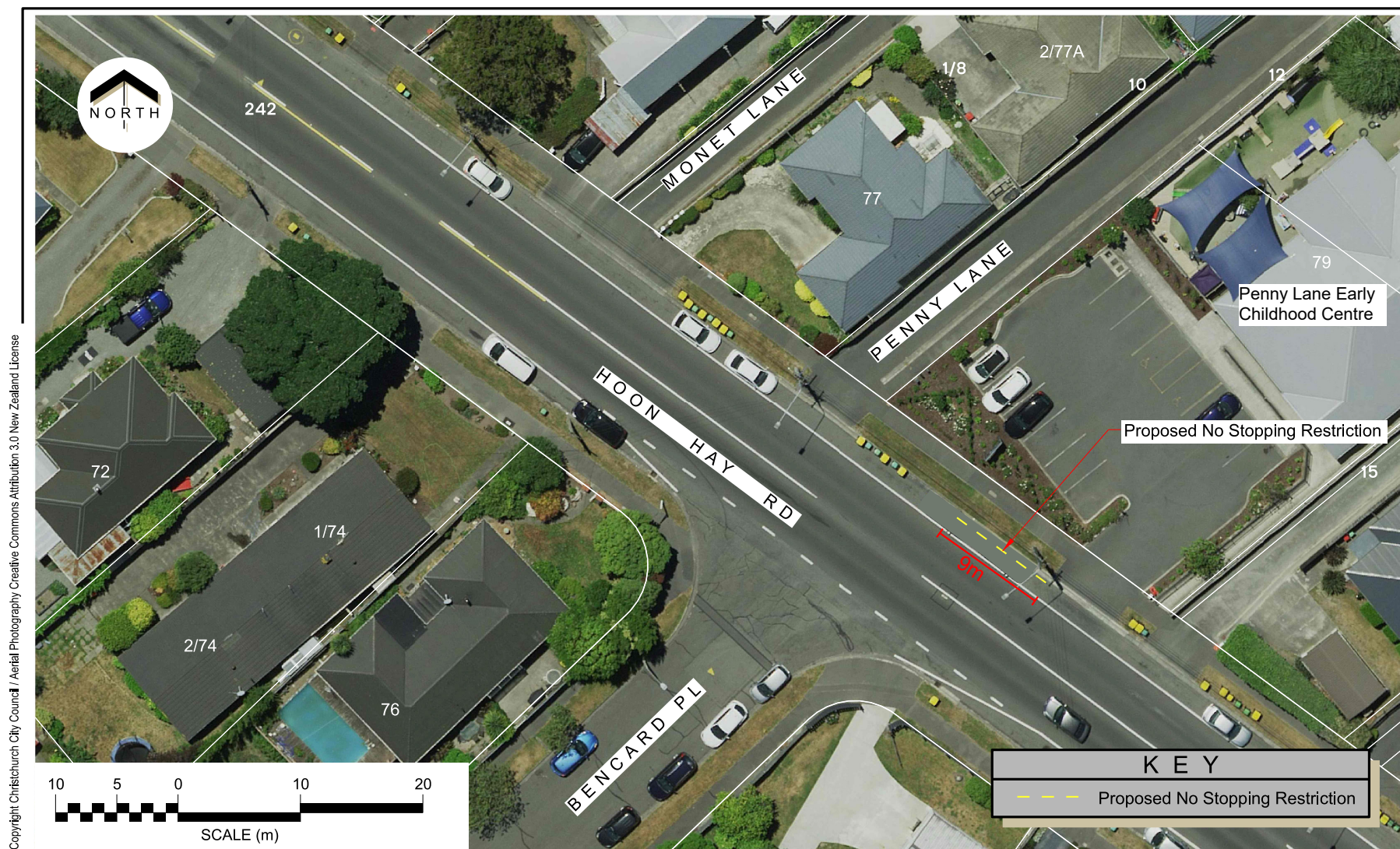
(a) This report contains:

- (i) sufficient information about all reasonably practicable options identified and assessed in terms of their advantages and disadvantages; and
- (ii) adequate consideration of the views and preferences of affected and interested persons bearing in mind any proposed or previous community engagement.

(b) The information reflects the level of significance of the matters covered by the report, as determined in accordance with the Council's significance and engagement policy.

Signatories / Ngā Kaiwaitohu

Author	Toni Dakers - Traffic Engineer
Approved By	Katie Smith - Team Leader Traffic Operations Stephen Wright - Acting Manager Operations (Transport) Lynette Ellis - Head of Transport & Waste Management



Christchurch
City Council

79 Hoon Hay Road
Proposed No Stopping Restriction
For Community Board Approval

Attachment A
Designed by: TD Approved by: LB

Original Plan Size: A4
ISSUE.1 17/02/2022
TG140792 MJR

10. Waihoru Spreydon-Cashmere Community Board Discretionary Response Fund 2021/22: Huntsbury Community Centre, Graeme Dingle Foundation Canterbury, Cashmere Bowling Club.

Reference / Te Tohutoro: 22/492770

Report of / Te Pou Matua: Jay Sepie Community Development Advisor jay.sepie@ccc.govt.nz,
Heather Davies Community Development Advisor
heather.davies@ccc.govt.nz, Watene Hema Community
Development Advisor Watene.hema@ccc.govt.nz.

General Manager / Pouwhakarae: Mary Richardson General Manager Citizens and Community,
mary.richardson@ccc.govt.nz

1. Purpose of Report Te Pūtake Pūrongo

- 1.1 The purpose of this report is for the Waihoru Spreydon-Cashmere Community Board to consider applications for funding from its 2021/22 Discretionary Response Fund from the organisations listed below.

Funding Request Number	Organisation	Project Name	Amount Requested	Amount Recommended
00064049	Huntsbury Community Centre	Community Centre Roof Replacement	\$4,900	\$4,900
00064045	Graeme Dingle Foundation Canterbury	Kiwi Can Programme at Te Kōmanawa Rowley School	\$7,629	\$1,500
00064040	Cashmere Bowling Club	Greenkeeper	\$4,000	\$1,500

- 1.2 There is currently a balance of \$24,345 remaining in the fund

2. Officer Recommendations Ngā Tūtohu

That the Waihoru Spreydon-Cashmere Community Board:

1. Approves a grant of \$4,900 from its 2021/22 Discretionary Response Fund to Huntsbury Community Centre Incorporated towards the costs of replacing the Huntsbury Community Centre roof.
2. Approves a grant of \$1,500 from its 2021/2022 Discretionary Response Fund to Graeme Dingle Foundation Canterbury towards the Kiwi Can Leaders wages for the programme at Te Kōmanawa Rowley School.
3. Approves a grant of \$1,500 from its 2021/22 Discretionary Response Fund to Cashmere Bowling Club towards the Greenkeeper contract.

3. Key Points Ngā Take Matua

Strategic Alignment Te Rautaki Tīaroaro

- 3.1 The recommendations are strongly aligned to the Strategic Framework and in particular the strategic priority of enabling active and connected communities to own their future. They will provide resilient communities outcomes.

Decision Making Authority Te Mana Whakatau

- 3.2 The Community Board has the delegated authority to determine the allocation of the Discretionary Response Fund for each community
- 3.2.1 Allocations must be consistent with any policies, standards or criteria adopted by the Council
- 3.2.2 The Fund does not cover:
- Legal challenges or Environment Court challenges against the Council, Council Controlled organisations or Community Board decisions
 - Projects or initiatives that change the scope of a Council project or that will lead to ongoing operational costs to the Council (though Community Boards can recommend to the Council that it consider a grant for this purpose).

Assessment of Significance and Engagement Te Aromatawai Whakahirahira

- 3.3 The decisions in this report are of low significance in relation to the Christchurch City Council's Significance and Engagement Policy.
- 3.4 The level of significance was determined by the number of people affected and/or with an interest.
- 3.5 Due to the assessment of low significance, no further community engagement and consultation is required.

Discussion Kōrerorero

- 3.6 At the time of writing, the balance of the 2021/22 Discretionary Response Fund is as below.

Total Budget 2020/21	Granted To Date	Available for allocation	Balance If Staff Recommendation adopted
\$74,416	\$50,071	\$24,345	\$16,445

- 3.7 Based on the current Discretionary Response Fund criteria, the applications listed above are eligible for funding.
- 3.8 The attached Decision Matrix provides detailed information for the applications. This includes organisational details, project details, financial information and staff assessment.

Attachments Ngā Tāpirihanga

No.	Title	Page
A ↓	Waihoru Spreydon-Cashmere Community Board Discretionary Response Fund Decision Matrix: Huntsbury Community Centre Incorporated 2022-05-18	24
B ↓	Waihoru Spreydon-Cashmere Community Board Discretionary Response Fund Decision Matrix; Kiwi Can Programme at Te Komanawa Rowley School	25
C ↓	Waihoru Spreydon-Cashmere Community Board Discretionary Response Fund Decision Matrix; Cashmere Bowling Club.	26

Confirmation of Statutory Compliance / Te Whakatūtutanga ā-Ture

Compliance with Statutory Decision-making Requirements (ss 76 - 81 Local Government Act 2002).

(a) This report contains:

- (i) sufficient information about all reasonably practicable options identified and assessed in terms of their advantages and disadvantages; and
- (ii) adequate consideration of the views and preferences of affected and interested persons bearing in mind any proposed or previous community engagement.

(b) The information reflects the level of significance of the matters covered by the report, as determined in accordance with the Council's significance and engagement policy.

Signatories / Ngā Kaiwaitohu

Authors	Jay Sepie - Community Development Advisor Heather Davies - Community Development Advisor Watene Hema - Community Recreation Advisor
Approved By	Jo Wells - Manager Community Governance, Spreydon-Cashmere

2021/22 DRF SPREYDON-CASHMERE DECISION MATRIX

Priority Rating

One	Meets all eligibility criteria and contributes significantly to Funding Outcomes and Priorities. Highly recommended for funding.
Two	Meets all eligibility criteria and contributes to Funding Outcomes and Priorities. Recommended for funding.
Three	Meets all eligibility criteria and contributes to Funding Outcomes and Priorities but to a lesser extent than Priority 2 applications. Not recommended for funding.
Four	Meets all eligibility criteria and has minimum contribution to Funding Outcomes and Priorities / Insufficient information provided by applicant (in application and after request from Advisor) / Other funding sources more appropriate. Not recommended for funding.

00064049	Organisation Name	Name and Description	Total Cost	Contribution Sought Towards	Staff Recommendation	Priority
	Huntsbury Community Centre Incorporated	Community Centre Roof Replacement The Huntsbury Community Centre seeks a contribution towards the cost of replacing the roof of its hire facility building.	\$36,500 Requested \$ 4,900 (13% requested)	\$4,900 - Roof materials and installation	\$ 4,900 That the Waihoru Spreydon-Cashmere Community Board approves a grant of \$4,900 from its 2021/22 Discretionary Response Fund to the Huntsbury Community Centre Incorporated towards the costs of replacing the Huntsbury Community Centre roof.	2

Organisation Details Service Base: 30 H Huntsbury Avenue, Hunstbury Legal Status: Incorporated Society Established: 25/10/1975 Target Groups: Community Development Annual Volunteer Hours: 550 Participants: 1,000 Alignment with Council Strategies <ul style="list-style-type: none"> Strengthening Communities Community Facilities Network Plan CCC Funding History 2019/20 - \$50,000 (earthquake strengthening) CEF 2019/20 - \$2,000 (Hunstbury 100) DRF SC 2020/21 - \$768 (trestles) DRF SC	Other Sources of Funding \$30,000 - Funds on hand \$1,100 - hire fees Staff Assessment <p>The Hunstbury Community Centre Incorporated was formally established as a Society in 1971, and opened the doors to its community owned facility in 1975. The building hall is hired predominantly to the local Preschool which operates five days per week during term times. It is regularly used for exercise classes, and dance sessions, and is also hired for some private functions, community meetings, and events.</p> <p>The facility is managed by a voluntary committee without paid staff. The core operations are financially self-sufficient. Earthquake repairs were assisted in recent years with a Council Capital Endowment Fund grant to strengthen the damaged building. The intention of the organisation at this time was to meet the cost of roof repairs from its own budget. After imposed delays and the rising cost impacts of the COVID-19 pandemic the committee now faces a shortfall of funds. Numerous leaks during wet weather means that hirers are using buckets to collect the water entering the hall. The 48 year old roof is rusted in places and replacement is required rather than patch repairs.</p> <p>Support to meet the roof replacement will enable the organisation to continue to provide this local facility in a condition that is safe and fit for purpose.</p>
--	--

«FUNDING_POOL» DECISION MATRIX

Priority Rating

One	Meets all eligibility criteria and contributes significantly to Funding Outcomes and Priorities. Highly recommended for funding.
Two	Meets all eligibility criteria and contributes to Funding Outcomes and Priorities. Recommended for funding.
Three	Meets all eligibility criteria and contributes to Funding Outcomes and Priorities but to a lesser extent than Priority 2 applications. Not recommended for funding.
Four	Meets all eligibility criteria and has minimum contribution to Funding Outcomes and Priorities / Insufficient information provided by applicant (in application and after request from Advisor) / Other funding sources more appropriate. Not recommended for funding.

00064045	Organisation Name	Name and Description	Total Cost	Contribution Sought Towards	Staff Recommendation	Priority
	Graeme Dingle Foundation Canterbury (GDFC)	Kiwi Can at Te Komanawa Rowley School Funding is being requested towards the delivery of the Kiwi Can Programme in Te Komanawa Rowley School.	\$23,905 Requested \$ 7,629 (32% requested)	\$5,306 - wages programme leaders \$1,080 - management overheads \$1,051 - training \$100 - equipment, activities \$92 - mileage	\$ 1,500 That the Waihoru Spreydon-Cashmere Community Board approves a grant of \$1,500 from its 2021/22 Discretionary Response Fund towards Kiwi Can Leaders wages for the programme at Te Komanawa Rowley School.	2

<p>Organisation Details</p> <p>Service Base: 383 Colombo Street Legal Status: Charitable Trust Established: 12/06/2002 Target Groups: Children/Youth Annual Volunteer Hours: 30 Participants: 139</p> <p>Alignment with Council Strategies</p> <ul style="list-style-type: none"> Strengthening Communities Strategy Children and Youth Strategies <p>CCC Funding History</p> <p>2021/22 - \$9,000 (Kiwi Can, Stars and Project K Delivery) SCF HHR 2021/22 - \$1,470 (Empowering Young People in Papanui-Innes) SCF PI 2020/21 - \$1,470 (Kiwi Can) SCF PI 2020/21 - \$13,000 (Kiwi Can) SCF LCH 2020/21 - \$18,000 (Wages) SCF HHR 2019/20 - \$13,000 (Kiwi Can) SCF LCH 2019/20 - \$18,000 (Kiwi Can) SCF HHR 2018/19 - \$18,000 (Youth Development Programmes) SCF HHR 2018/19 - \$15,000 (Kiwi Can) SCF LCH</p>	<p>Other Sources of Funding</p> <p>None pending as new programme. The school pays \$25 out of the \$220 cost per child per year</p> <p>Staff Assessment</p> <p>In February 2022 The Kiwi Can Programme began at Te Komanawa Rowley School. The school has 139 students of which 55% are Pacific, 22% Maori, 16% Pakeha and 7% other. The school principal has experience of Kiwi Can from his work at a previous school. He felt that the life skills and value based programme that focuses on self-worth, self-confidence and the ability to take responsibility and accountability for personal actions would be of benefit to students at the school.</p> <p>Kiwi Can is based on the theory that by supporting the individual, building their self-efficacy and strengthening their basic values, a real change can be made in downstream behaviour patterns such as educational failure, anti-social behaviour, bullying and crime. It is a preventative programme that aims to equip primary school children with skills to build resilience and self-belief, helping them to overcome barriers now and in the future.</p> <p>There is a young female and male leader both of Samoan heritage. This reflects the Pasifika and Maori roll in the school and provides cultural role modelling. They work with the school on an engagement plan that can include a mix of structured playground activities, tamariki initiated activities and meet and send off at the school gate. This time allows additional behaviour modelling and "coaching" across age groups outside of structured class curriculum time. The leaders are also in the playground and can pick up and change situations in an informal setting. It is delivered once a week, involves all students and 1.5 hours is outside of school curriculum time.</p> <p>In the process of assessing this application, there was a meeting with the school principal. He initiated the request for the Kiwi Can programme as he felt the value based nature of the programme would support the values of the school, as opposed to a standard curriculum programme. There was also a meeting with staff from Crossover Trust, an organisation that currently also delivers services in the school and they felt Kiwi Can was complimentary to their programmes and activities.</p> <p>The only aspect of the programme that can be considered for this application is that which takes place outside of the school curriculum. This equates to 32% of the day when the leaders are at the school.</p>
---	---

2021/22 DRF SPREYDON-CASHMERE DECISION MATRIX

Priority Rating

One	Meets all eligibility criteria and contributes significantly to Funding Outcomes and Priorities. Highly recommended for funding.
Two	Meets all eligibility criteria and contributes to Funding Outcomes and Priorities. Recommended for funding.
Three	Meets all eligibility criteria and contributes to Funding Outcomes and Priorities but to a lesser extent than Priority 2 applications. Not recommended for funding.
Four	Meets all eligibility criteria and has minimum contribution to Funding Outcomes and Priorities / Insufficient information provided by applicant (in application and after request from Advisor) / Other funding sources more appropriate. Not recommended for funding.

00064040	Organisation Name	Name and Description	Total Cost	Contribution Sought Towards	Staff Recommendation	Priority
	Cashmere Bowling Club Inc	Greenkeeper The Club is seeking funding assistance towards the cost of a greenkeeper who is contracted to the club for approximately 20 hours a week. Funding of the greenkeeper role, ensures the club utilizes someone with appropriate training, and qualifications to maintain their greens to a competition level, and allows for wider community use.	\$ 6,200 Requested \$ 4,000 (65% requested)	Greenkeeper - \$6,200	\$ 1,500 That the Waihoru Spreydon-Cashmere Community Board makes a grant of \$1,500 from its 2021/22 Discretionary Response Fund to the Cashmere Bowling Club Inc towards the Green Keeper contract.	2

Organisation Details Service Base: 12 Crichton Terrace Legal Status: Incorporated Society Established: 6/11/1963 Target Groups: Sports/Recreation Annual Volunteer Hours: 250 Participants: 100 Alignment with Council Strategies <ul style="list-style-type: none"> Physical Recreation and Sport Strategy Strengthening Communities Together Strategy CCC Funding History 2020/21 - \$5,000 (Heat Pumps) DRF 2019/20 - \$800 (Greenkeeper/Equipment) SCF 2018/19 - \$1200 (Greenkeeper/Equipment) DRF	Other Sources of Funding Nil Staff Assessment Cashmere Bowling Club Inc registered as an Incorporated Society in 1963. The Club owns their clubrooms on Crichton Terrace, which is on land leased to them by the Council. The Club reports having a membership base of approximately 55 people with a further 20 social members. The subscriptions for the members are \$195 per year, with social membership at \$30 and the Club also offers participants the choice to pay as they play. It provides an accessible space for members to members to keep engaged in physical activity and maintain social connection. The club also hires the space for community use including work functions and birthday celebrations. The club also has a relationship with Cashmere High School, where students utilise the facility weekly. The Club is seeking funding assistance towards the cost of a greenkeeper to maintain the green to the competition standard and available for community use. This requires specialised certificates for spraying chemicals and pesticides. The Club contracts this position on a 12 month contract and works approximately 20 hours a week over 6 days.
--	--

11. Waihoru Spreydon-Cashmere Community Board Area Report - May 2022

Reference Te Tohutoro: 21/1756817

Report of Te Pou Matua: Jo Wells, Community Governance Manager – Spreydon-Cashmere,
jo.wells@ccc.govt.nz

General Manager Mary Richardson, General Manager Customer and Community,
Pouwhakarae: mary.richardson@ccc.govt.nz

1. Purpose of Report Te Pūtake Pūrongo

This report provides the Board with an overview on initiatives and issues current within the Community Board area.

2. Officer Recommendations Ngā Tūtohu

That the Waihoru Spreydon-Cashmere Community Board:

1. Receive the Waihoru Spreydon-Cashmere Community Board Area Report for May 2022.

3. Community Support, Governance and Partnership Activity

3.1 Community Governance Projects

Activity	Detail	Timeline	Strategic Alignment
Community Service Awards	The nomination period for Waihoru Spreydon-Cashmere Community Service and Youth Service Awards closed 14 April. Nominations are due to be decided by the Community Board by June.	Within 2022 calendar year.	Resilient Communities
Summer With Your Neighbours	The period for Summer With Your Neighbours events support by the Community Board was extended beyond the planned period of 29 October 2021 to 31 March 2022 due to the COVID-19 restrictions. Of the 48 neighbourhood events approved for the subsidy, 19 had submitted subsidy claims by late April. Claims can be made until 1 June.	June 2022	Resilient Communities

3.2 Community Funding Summary

3.2.1 At its 3 August 2021 meeting, the Board granted \$85,500 to 11 community groups from its 2021/22 Strengthening Communities Fund.

3.2.2 The Board's Discretionary Response Fund unallocated balance for 2021/22 is \$24,545 (refer to **Attachment H** for details).

- 3.2.3 The Board's Youth Achievement and Development Fund unallocated balance for 2021/22 is \$1,700 (refer to **Attachment H** for details).
- 3.2.4 The Board's Off the Ground Fund unallocated balance for 2021/22 is \$2,400 (refer to **Attachment H** for details).
- 3.2.5 The 2022-23 Strengthening Communities Fund application period was open from 21 March 2022 to 26 April 2022. Staff are currently assessing applications, and the Board will consider them at a meeting later in 2022.

3.3 Participation in and Contribution to Decision Making

3.3.1 Report Back on Other Activities Contributing to Community Board Plan [for items not included in the above table but are included in Community Board Plan]

- **Cashmere Road / Barrington Street Roundabout** – One of the priorities in the Community Board Plan is to investigate and promote projects to increase the safety and use of cycling and other modes of active transport. The Council recently consulted on pedestrian safety improvements at the Cashmere Road / Barrington Street roundabout. The Board will consider a report on this matter in due course.

3.3.2 Council Engagement and Consultation.

- **Environment Canterbury's Annual Plan** – The Council made a submission on ECan's Annual Plan 2022-23, and the Board provided input to this. The Council's submission is attached (**Attachment A**).
- **Council's Annual Plan** – Consultation on the Council's Draft Annual Plan 2022-23 was open from 11 March to 18 April 2022. The Board's submission is attached (**Attachment B**).
- **Start Work Notices** – Various Start Work Notices have been sent to the Board throughout the month. All city-wide start work notices can be found at: <https://ccc.govt.nz/transport/works>.

3.4 Governance Advice

3.4.1 Public Forum – The Board received public forum presentations at its 29 March and 13 April 2022 meetings on the following topics:

- The Friends of Riverlaw Esplanade Reserve, a newly established group, provided an update about its goals and upcoming activities.
- Arvida provided an update about its Good Friends programme.
- A resident provided an update about the history of the land where Marylands School was formerly located.
- A resident spoke about his suggestion to improve pedestrian access near the Dyers Pass / Hackthorne Roads corner.

3.4.2 Deputations – The Board received deputations at its 29 March and 13 April 2022 meetings on the following topics:

- A resident spoke to her item of correspondence about her suggestions to improve traffic safety, amenity and climate outcomes at the Howard / Simeon Streets intersection.

3.4.3 Correspondence – The Board received correspondence at its 29 March and 13 April 2022 meetings on the following topics:

- A resident provided correspondence about the Howard / Simeon Streets intersection (refer to Item 3.4.2 above).
- The Addington Neighbourhood Association provided correspondence suggesting that the speed limit in Addington be reduced.

3.4.4 **Briefings** – The Board received briefings in March and April 2022 about the following issues:

- Community Facilities
- Te Reo Māori Training
- Purau Reserve
- Submission on Council's Draft Annual Plan 2022-23
- Opawa Farmers' Market
- Innovating Streets Project – Beckenham Street Pedestrian Crossing
- Submission on Proposed Changes to Christchurch District Plan
- Community Governance Team Update.

3.4.5 **Board Requests** – The Board made no requests during Elected Members' Information Exchange at its 29 March and 13 April 2022 meetings.

4. Advice Provided to the Community Board

- 4.1 **Customer Service Requests Report** – A report on customer service requests in the Board area for March 2022 is attached as **Attachment C**.
- 4.2 **Graffiti Snapshot** – An update on graffiti in the Board area for March 2022 is attached as **Attachment D**.
- 4.3 **Street Names in Middleton** – At its 30 March 2022 meeting, the Board received correspondence from a citizen about street names in Middleton (**Attachment E**). The Board asked for staff advice, which has been separately circulated to Board members.
- 4.4 **Te Kōmanawa Rowley School Kea Crossing** – At its 5 October 2021 meeting, the Board heard from Te Kōmanawa Rowley School about their proposal for a kea crossing. The Board held a site visit with staff and the school, and asked for staff advice. A memo from staff is attached (**Attachment F**).
- 4.5 **Plantings Near Ernle Clark Reserve** – At its 20 October 2021 meeting, the Board heard from the Friends of Ernle Clark Reserve about two unhealthy exotic trees adjacent to the reserve near Barrington Street that the Council had replaced with exotic trees. The group requested that the trees be replaced with natives, and the Board asked for staff advice on the matter. The Board held a site visit with staff and the group, and staff provided advice in the attached memo (**Attachment G**).
- 4.6 **Cashmere Tennis Club** – At its meeting on 16 February 2022, the Board approved a ground lease to the Cashmere Tennis Club for part of Cashmere Valley Reserve. The Board also asked that staff seek assurance from the club that it would continue to make the triangle of land adjacent to Crichton Terrace and Valley Road available for public use. Staff advised that while the volley wall and a small area around this are part of the club's leased area, the rest of the triangle of land is outside of the leased area and is public land. The club is also happy for the public to use the area of land around the volley wall that is within the leased area.

- 4.7 **Vehicle Break-Ins at Mt Vernon Park** – At its meeting on 1 March 2022, the Board received a public forum presentation from the Port Hills Park Trust Board about a recent increase in vehicle break-ins at the Mt Vernon Park car park. The Board asked for staff advice, which is below:

Signage – *The Police no longer produce signage discouraging vehicle break-ins. The Council currently does not produce such signage, but it can if/when there is a need. Staff are planning to install one sign at Mt Vernon Park, and will liaise with the Trust to confirm if additional signage is required.*

CPTED Assessment – *The Council charges \$6,000 to complete a crime prevention through environmental design (CPTED) assessment. The Trust could apply to the Board for funding for this, but staff familiar with the area have given an early indication that a CPTED assessment would likely identify pruning/removal of shrubs to improve sightlines, which the Trust has already undertaken.*

CCTV – *Staff suggested that the Trust purchase cameras and install signage noting that the area is under surveillance. If the Trust does not have budget for this, it could apply for funding from the Board.*

- 4.8 **Internet Connection at Community Facilities** – At its meeting on 16 March 2022, the Board heard from the St Martins Library about a request for wi-fi to be installed at the facility. The Board asked for staff advice on what other community facilities in the Board area do not have wi-fi. Staff provided the advice below:

Staff have not identified any new needs for wi-fi in the Board area in community-managed Council-owned facilities. To date the Board has supported installation of wi-fi at Manuka Cottage and provided Rowley Resource Centre with a grant for this technology to help meet the needs of the local populations and the role of the groups managing these facilities in high deprivation communities. The Board has also donated a contribution to the set-up of wi-fi at the Old Stone House as the Cracroft Community Centre identified this as a service that would encourage improved use and activation of that hire facility.

The Board is awaiting staff advice on whether public wi-fi can be installed at the St Martins Library and Community Centre.

- 4.9 **Seat in Ernle Clark Reserve** – At its meeting on 16 March 2022, the Board asked staff to trim vegetation to improve access to a seat in Ernle Clark Reserve near the Colombo Street entrance in the area with swans. Staff confirmed that vegetation reduction work was completed around all four benches in the reserve. A photo of the bench closest to the Colombo Street entrance is below:



21/80176

Attachments Ngā Tāpirihanga

No.	Title	Page
A ↓	Council's Submission on Environment Canterbury's Annual Plan 2022-23	32
B ↓	Board's Submission on Council's Draft Annual Plan 2022-23	36
C ↓	Customer Service Requests Report - March 2022	41
D ↓	Graffiti Snapshot - March 2022	42
E ↓	Correspondence - Street Names in Middleton - March 2021	45
F ↓	Memo - Te Kōmanawa Rowley School Kea Crossing	46
G ↓	Memo - Plantings Near Ernle Clark Reserve	48
H ↓	Funding Balances	51

Signatories Ngā Kaiwaitohu

Authors	Amy Hart - Community Board Advisor Jo Wells - Manager Community Governance, Spreydon-Cashmere Jay Sepie - Community Development Advisor Heather Davies - Community Development Advisor Watene Hema - Community Recreation Advisor Wendy Gunther - Support Officer Marie Byrne - Community Development Advisor
Approved By	Matthew McLintock - Manager Community Governance Team John Filsell - Head of Community Support and Partnerships

7 April 2022

03 941 8999

53 Hereford Street
Christchurch 8013

PO Box 73013
Christchurch 8154

ccc.govt.nz

Environment Canterbury,
PO Box 345,
Christchurch 8140

haveyoursay@ecan.govt.nz

Tēnā koutou katoa,

Christchurch City Council submission on the Environment Canterbury Draft Annual Plan 2022/23

1. Christchurch City Council (the Council) thanks Environment Canterbury for the opportunity to provide comment on the Draft Annual Plan 2022/23. As a fellow member of the Greater Christchurch Partnership, the Council strongly values its collaborative working relationship with Environment Canterbury. We look forward to working closely with Environment Canterbury to realise our councils' shared goals and priorities and welcome the opportunity to further discuss the proposals outlined in the draft Annual Plan.
2. Our Community Boards have an intrinsic understanding of local issues and advocate strongly for the interests of their communities. The Community Boards of the Christchurch district have contributed to this submission and their views are set out below. While this submission reflects the position of the Council we have identified where this also aligns with the views of individual community boards.

Changing the bus fare structure

3. As the Council noted in our submission on the Environment Canterbury Long Term Plan 2021-31¹ last year, increasing the share of travel by public transport in our urban areas has a critical role to play in creating a more inclusive, accessible, safe and sustainable transport system, in line with the Christchurch Transport Strategic Plan 2012-2042. The Council supports Environment Canterbury's efforts to increase public transport patronage with a review of bus fares.
4. We note that the Greater Christchurch Partnership has requested Partner councils, including the Council and Environment Canterbury, look at an accelerated six year programme for public transport (PT) Futures. The Council considers this to be the highest priority as the PT Futures business cases represent an ongoing commitment to investing in public transport infrastructure and are a significant step toward increasing the attractiveness and uptake of public transport in Greater Christchurch. The Council understands that fare level is just one factor that people take into account when they make a decision to use public transport. Bus reliability, frequency and convenience also have significant impacts on residents' choices. For this reason, we encourage Environment Canterbury to continue to invest in improving public transport services. We hope the accelerated PT Futures programme will remain a priority, and that Environment Canterbury will continue work to support infrastructure investment with improvements to services to ensure a combined approach. Waimāero Fendalton-Waimairi-Harewood Community Board has also reinforced the need for Environment Canterbury to focus on service improvements to the public transport system.

¹ <https://ccc.govt.nz/assets/Documents/The-Council/Request-information/2021/Christchurch-City-Council-Submission-on-ECan-LTP-2021-31.PDF>

5. Waipapa Papanui-Innes Community Board supports measures to increase bus patronage, including the trial of a new fare structure, the introduction of Wi-Fi on all buses and increased promotion of park-and-ride facilities. The Board note the importance of a good communications plan as it is important the public are aware that these proposals do not just benefit public transport patrons, and that the environmental benefits of a mode shift from private cars to public transport benefits everyone and will hopefully lead to less cars on the road.
6. The Waitai Coastal-Burwood, Te Pātaka o Rākauhautū Banks Peninsula and Waihoru Spreydon-Cashmere Community Boards have all noted their support for a two-year trial of fare-free travel for under 25 year olds, students, Total Mobility and Community Services card holders across all zones (option one). They are also interested in Environment Canterbury increasing investment to encourage greater public transport use.
7. The Banks Peninsula Community Board notes that the vast majority of the Banks Peninsula Ward is not serviced by buses, as routes are limited to Lyttelton and Rapaki. The Board continues to advocate for improved access for Banks Peninsula communities and would like to see an extension of the existing bus service, connecting residents to other communities and metropolitan Christchurch. The Board notes that the Diamond Harbour ferry service is excluded from the option one trial, and emphasise that this service should not become cost prohibitive for community users. Additionally, the Board considers those community members without access to buses should not be charged for a service unavailable to them. A targeted rate applicable to those areas/communities where bus services are available would be more appropriate and equitable
8. Additionally, the Coastal-Burwood Community Board notes that the Wainoni, Avondale and Dallington communities have had routes cut and services reduced post-earthquake, which has been detrimental to these residents. The Board supports a focus on improving public transport services for these residents.

Recovery from the May 2021 flooding

9. The Council strongly endorses the shared funding model being proposed to pay for the extensive repairs needed to flood protection infrastructure. The Council supports Environment Canterbury's share being loan funded as this reflects the expected long life of the assets concerned and avoids having rates spike if funded in the years the costs are incurred. The Council supports the borrowing being repaid through the general rate as these assets are fundamental to keeping our region safe and functioning meaning we all benefit from having a quality flood protection infrastructure system.
10. Climate change will result in more frequent events of this scale and magnitude in the future, and funding responses will need to take account of this. As we emphasise in our comments on the proposed climate change levy, the Council would value the opportunity to work collaboratively with Environment Canterbury and other partners on climate resilience funding and activities. We need to consider how we best collect and distribute funds over time, and across agencies with different but clearly inter-connected responsibilities. We also await important direction from the Government in this area, via the National Adaptation Plan and Climate Adaptation Act.
11. The Banks Peninsula Community Board also notes its ongoing support for the river rating districts and believes that a public rate should be set. The Board also asks that the Wairewa and Halswell river rating districts be maintained.

Reviewing flood protection costs in Ashburton

12. While this proposal does not impact directly on Christchurch residents, the Council does support the concept of the costs of flood protection on any river being fairly allocated to those who benefit. Environment Canterbury is, in our view, taking a responsible approach to its allocation of costs.

13. The Banks Peninsula Community Board shares Environment Canterbury's focus and concerns regarding the climate emergency and the increasing frequency and severity of weather events such as flooding, fires, droughts and storms. The Board strongly believes that adequate funding should be available to support recovery efforts and community resilience. Community members should understand Environment Canterbury's role and responsibilities in responding to severe weather events. The Board believes community awareness could be improved by educating residents about Environment Canterbury's role and the resources available to support recovery efforts, as well as the role of property owners to maintain their stream banks to help alleviate flooding.

Climate change levy

14. Climate change is the biggest intergenerational challenge of our time and the Council supports Environment Canterbury's recognition of its leadership role in ensuring climate change and community resilience are vital parts of the transformation for the future of our region. Like Environment Canterbury, the Council is also committed to playing our part and one of our five strategic priorities is meeting the challenge of climate change through every means available. Consequently, the Council also has a climate resilience work programme underway and is in the very early stages of considering options for funding climate resilience work. We need to ensure we consider intergenerational equity in any funding arrangements.
15. We understand Environment Canterbury's work on funding models such as a climate change levy is in the early stages of development and there is much more work still to come. We believe work on funding models should be developed collaboratively. We welcome the opportunity to discuss this work with Environment Canterbury before it is progressed further.
16. The Climate Adaptation Act (CAA) is expected to be released in Bill form next year and is likely to consider funding and financing of adaptation. The CAA will have implications for councils' climate change and community resilience work, and the extent of this is yet to be fully understood.
17. The Spreydon Cashmere and Papanui Innes Community Boards have expressed their support for Environment Canterbury's focus on addressing the impacts of climate change. Spreydon Cashmere also notes that one of the key projects the Board would like to see funded is public transport. The Board would like to see Environment Canterbury undertake analysis of which projects would reduce emissions in the most cost effective manner so that the funding has the most significant impact on mitigating climate change.

Rates

18. The overwhelming majority of councillors, noting the rates increase was a small dollar amount, supported the proposed improvements to public transport along with the commitment to the PT Futures Business case. Five councillors and one community board wanted us to note their request that the rates increased be reduced.

Other comments

19. The Council has previously advocated to both Environment Canterbury and central government for improvements to our waterways, including for lower nitrate levels in ground and surface water, as well as reducing sources of copper and zinc in stormwater. The Spreydon Cashmere Community Board asks Environment Canterbury to continue to focus on reducing nitrates and other harmful contaminants from entering our waterways.
20. The Banks Peninsula Board advocates that funding for the Water Zone Committees is retained. These Committees provide a valuable resource to the community and should be maintained.

21. In previous submissions on Environment Canterbury's Long Term Plans, the Council supported the Environment Canterbury monitoring and enforcement work programme as well as adequate funding for proactive compliance and enforcement. We reiterate support for continued prioritisation of key enforcement activities. Waipuna Halswell-Hornby-Riccarton Community Board notes their support for Environment Canterbury to continue to focus on improving the monitoring and enforcement of quarries.

Thank you for the opportunity to provide this submission. We look forward to further collaboration between our councils, particularly on the points raised in this submission. The Council does not wish to be heard in support of this submission as part of the Hearings Panel process.

For any clarification on points within this submission please contact Ellen Cavanagh, Policy Analyst at Ellen.Cavanagh@ccc.govt.nz

Ngā mihi,



Dawn Baxendale
Chief Executive
Christchurch City Council



Waihoru Spreydon-Cashmere Community Board

Submission on Christchurch City Council's Draft Annual Plan 2022-23

The Waihoru Spreydon-Cashmere Community Board appreciates the opportunity to provide a submission to the Christchurch City Council on the Draft Annual Plan 2022-23.

The Board's statutory role is, "to represent, and act as an advocate for, the interests of its community" and "to prepare an annual submission to the territorial authority for expenditure within the community" (Local Government Act 2002, section 52). The Board provides this submission in its capacity as a representative of the communities in the Spreydon-Cashmere area.

Our Community Board Plan's vision is that Spreydon-Cashmere is a place our residents are proud to call home. Our focus is for people of all ages, abilities, cultures and financial circumstances to live safe, healthy, interesting and connected lives in an area that boasts clean, stable waterways, healthy ecological corridors, attractive and usable greenspaces and inclusive and varied recreational opportunities that encourage interaction and communication.

We strongly support the proposed capital and operational investments in our communities (refer below for details).

1. Selwyn Street Masterplan – Street and Movement (S1) (ID 26622)

Selwyn's commercial centre was badly damaged in the earthquakes and lost much of its built heritage. This has disrupted our community's access to a crucial bumping space and convenient shopping / services. The Selwyn Street Masterplan sets out a community-agreed vision to transform the centre into a prosperous, attractive place for people to live, visit, spend time and do business. While the Masterplan includes both public and private sector-led actions, Council investment is key to catalysing private sector investment.

The Masterplan was approved in 2012, and the Street and Movement (S1) project (ID 26622) was originally scheduled for financial year 2016. The Board strongly supports the \$781,040 budget for this project in financial year 2023.

This is a priority in our Community Board Plan.

2. Pedestrian Safety Improvements in Cashmere and St Martins (ID 41650)

One of the priorities in our Community Board Plan is pedestrian safety improvements at the Cashmere Road / Barrington Street roundabout and the St Martins Road / Centaurus Road / Albert Terrace roundabout. As new subdivisions continue to be developed in the Westmorland and Halswell area, traffic congestion has increased significantly in recent years. Likewise, traffic volume

has increased in St Martins. Residents and local schools have been advocating for improvements for some time to increase the safety of students walking to school. The Council is currently consulting on proposals to improve pedestrian safety in these areas.

The Board has been advised that pedestrian safety improvements in Cashmere and St Martins have been prioritised within the Minor Road Safety Improvements programme budget (ID 41650) in financial year 2023, and we support this.

This is a priority in our Community Board Plan.

3. Hoon Hay Community Centre

One of the priorities in our Community Board Plan is that the Hoon Hay Community Centre is well-equipped and activated as it plays a key part in fostering connectedness and well-functioning local organisations. The Board and staff have been working with the community operators to increase capacity. But the Centre is also in need of renewal as it has no kitchen and the toilet and building do not meet accessibility standards, among other issues.

With Centennial Hall being demolished, the need for this community facility is now more important than ever. We have been advised that resources have been set aside to undertake the necessary improvements to the building.

The Board would like to ensure that the current resources set aside for the Hoon Hay Community Centre improvements are maintained and that this work is delivered in a reasonable timeframe, providing a fit for purpose, accessible to all facility.

This is a priority in our Community Board Plan.

4. Traffic Improvements to Dyers Pass, Hackthorne and Cashmere Roads

One of the priorities in our Community Board Plan is traffic improvements to Dyers Pass, Hackthorne and Cashmere Roads. Residents and visitors have expressed concern for a number of years for the safety of motorists, cyclists and pedestrians within this triangle due to increasing congestion from new subdivisions in Westmorland and Halswell.

The Board supports the budget in financial year 2024 to improve traffic safety at the Colombo Street / Cashmere Road / Centaurus Road / Dyers Pass Road roundabout.

This is a priority in our Community Board Plan.

5. Ōpāwaho-Heathcote River Major Cycleway

One of the priorities in our Community Board Plan is that the Ōpāwaho-Heathcote River Major Cycleway is completed. This would provide safe, sustainable ways for people to travel and aligns with our climate change goals. We understand that this project cannot proceed until the Mid-Heathcote Bank Stabilisation project (ID 35140) is complete in financial year 2025, as it could impact the suitability of a route along the river.

The Board supports the proposed budget for the Ōpāwaho -Heathcote River Major Cycleway project (ID 26604 and 26606) from financial years 2025 to 2029, but we request that this budget is brought forward if the Mid-Heathcote Bank Stabilisation project (ID 35140) is completed ahead of schedule.

This is a priority in our Community Board Plan.

6. South Library and Service Centre Earthquake Repairs (ID 20836)

The Board supports the budget for the South Library and Service Centre Earthquake Repairs (ID 20836) scheduled to start in financial year 2024. We expect that this project will not be further delayed, and that we will be involved in the design process.

This building from its very first day has been a very much loved centre for the local community. It is important for the Waihoru Board that an alternative building close to the South Christchurch Library is found to provide interim basic council and library services. We hope too that a te reo name is negotiated for the repaired building. Apart from obvious and important reasons for a name change, nothing could be more boring than its current moniker.

We also ask that this project is carried out in conjunction with the Mid-Heathcote Masterplan Implementation project (ID 1410) so that building works are coordinated with improvements to the adjacent Ōpāwaho Heathcote River.

7. Coronation Reserve

The landscape plan for Coronation Reserve in Huntsbury was approved in 2008, but has not been fully implemented due to funding constraints following the earthquakes. This means that site clearance and maintenance has been deferred, resulting in fire risk to nearby homes. Residents have requested that the landscape plan is fully implemented and the reserve is adequately maintained so that first risk is mitigated, new plants survive and more native birds return.

The Board supports the increased budget of \$100,000 in financial years 2023 and 2024 to implement the landscape plan, including completing deferred maintenance and mitigating fire risk.

8. Mid-Heathcote Masterplan Implementation (ID 1410)

In the Long Term Plan 2021-22, the Council decided to delay the Mid-Heathcote Masterplan Implementation project (ID 1410) from financial year 2022 to 2024. The Board accepts this delay, provided that the project is not further delayed. We also ask that this project is carried out in conjunction with the South Library and Service Centre Earthquake Repairs (ID 20836), which is located adjacent to the Opawaho Heathcote River.

9. Improved Access to Buses

The Age Friendly Spreydon-Cashmere Committee has proposed increasing the number of seats on pedestrian routes to bus stops to improve access for older adults and those with disabilities.

The Board requests that staff prioritise new seats from existing parks and roading programme budgets in financial year 2023 to be placed along these routes.

10. Library Fines

The Council recently stopped charging library members for overdue items to encourage people to take advantage of everything the libraries have to offer, which we support.

11. Recreation and Sport Fees

The Council is not proposing to increase children's entrance fees at recreation and sport centres or swimming lesson charges. The Board supports this as it makes recreation and sport more accessible to our communities.

12. Greenspace in Spreydon Area

One of the priorities in our Community Board Plan is to ensure the provision of fit-for-purpose greenspace in the Spreydon area. This area is currently experiencing significant housing intensification, which reduces private greenspace. Access to fit-for-purpose greenspace will provide space for social connection, recreation, having adventures and improved well-being.

While we are at an early stage of determining next steps as we only recently approved this priority, we signal the need for funding in the next Long Term Plan.

We also expect that development contributions be spent locally in the communities that are impacted by intensification on improvements such as streetscape renewals, roading, paths, tree

planting and deep dish gutter replacements. Intensive housing is a nil return for the residents in Addington/Spreydon and it would be good to be able to tell the communities the positives that will accrue to them and their neighbours in refurbishment, repair and innovation in terms of their environment (trees and green spaces) and infrastructure (footpaths, deep ditch gutters, recreational space and equipment).

This is a priority in our Community Board Plan.

13. Adult Playground

One of the priorities in our Community Board Plan is a new playground designed for adults to meet their social and physical wellbeing. The playground could include traditional play equipment as well as a speakers' corner, book exchange fridge, table tennis and strength and fitness equipment.

The Board signals the need for future funding for this project in the next Long Term Plan, pending our consideration of a recently completed feasibility study.

This is a priority in our Community Board Plan.

14. Local Cycleway Connections

One of the priorities in our Community Board Plan is for new local cycleways to connect Major Cycleways and Key Activity Centres to give people better options for getting around and ensure their safety. This was in response to community feedback that the new major cycleways are excellent, but the connections from these to key community amenities, such as schools and shopping areas, are essential to enable travellers to get to their destinations safely.

In the Long Term Plan 2021-31, the Council decided to allocate funding for four local local cycle connection programme budgets (ID 44697, 41851, 44704 and 44711) from financial year 2029.

While this is outside the Annual Plan's timeframe, we note our request in our Long Term Plan submission for these budgets to be brought forward to financial year 2025 and local cycleway connections in the Board area to be prioritised within these.

This is a priority in our Community Board Plan.

15. Cycleway from Westmorland to Nor'West Arc Major Cycleway (ID 41847)

One of the priorities in our Community Board Plan is for a new local cycleway to connect Westmorland with the Nor'West Arc Major Cycleway, which ends near Princess Margaret's Hospital. As multiple new subdivisions continue to be developed in the area, traffic congestion has increased significantly and there is a serious health and safety risk for cyclists.

This is the route that local young people are most likely to use to get to school. It is these students whose habits we would most like to change from a young age as this aligns with our climate change goals. Many residents and schools are also advocating for a new cycleway to ensure safe travel for students and the wider community.

In the Long Term Plan 2021-31, the Council decided to fund this in financial year 2025 as part of the Cycle Connections – Nor'West Arc programme budget (ID 41847). While this is outside the Annual Plan's timeframe, we signal our continued support for this project in financial year 2025.

This is a priority in our Community Board Plan.

16. Toilet and Pavilion Upgrades

The Board has discussed the need for a funding increase to improve the condition of public toilets and pavilions across the city.

One of the priorities in our Community Board Plan is to upgrade the toilets, changing room facilities and sports storage at Hoon Hay Park. These facilities are well used by many sports clubs, community groups and local residents and the park is home to a range of events, including Hoon Hay Hoops. But the use of these facilities has increased beyond their capacity.

The Board has been advised that this project is prioritised within the Community Parks Buildings Development programme budget (ID 61783) in financial year 2025. While this is outside the Annual Plan's timeframe, we signal our continued support to upgrade the toilets, changing room facilities and sports storage at Hoon Hay Park in financial year 2025.

This is a priority in our Community Board Plan.

17. Erosion and Sediment Control

Erosion and sediment runoff from our hilly suburbs significantly impact the health of our waterways. We signal the need for the next Long Term Plan to budget for additional staff resource to monitor and enforce erosion and sediment control on development sites, particularly after large storm events.

The Board wishes to be heard in support of this submission.

Yours sincerely,



Karolin Potter

Chairperson, Waihoru Spreydon-Cashmere Community Board

Ticket Report

01 Mar 2022 - 31 Mar 2022

Spreydon-Cashmere

Tickets Reported in March 2022

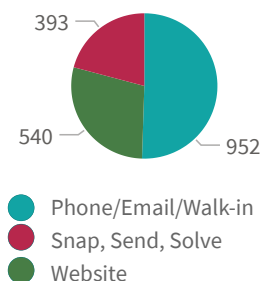
1,885

Tickets Reported

Status as of Report Date

1,244 Closed/Resolved
641 Open

Channels



Currently Open Tickets*

1,555

Open Tickets

118

Avg open ticket age (days)

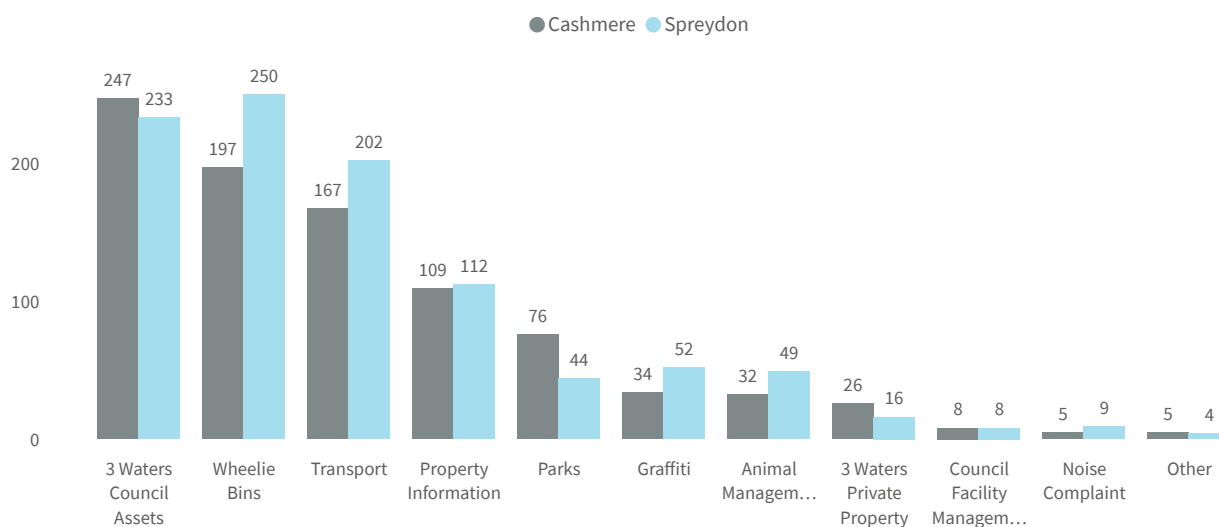
25% of open tickets are less than 8 days old

50% of open tickets are less than 34 days old

75% of open tickets are less than 130 days old

*Open as of report date, reported all time

Tickets Reported this Period by Incident Category



Top 10 Issues

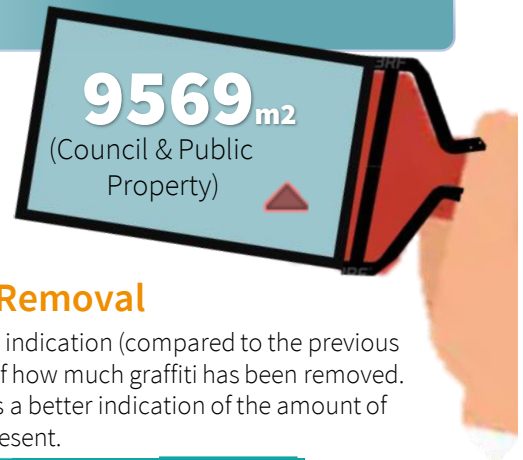
# Tickets	Object Category (sub-categories of the above)
348	Leak (Water Supply)
169	Bin Not Collected
152	Damaged Bin
96	Litter (Road)
95	Residential Property Files
73	Residential LIM
62	Graffiti
61	Missing Bin
61	Road Asset (e.g. footpath, road, furniture)
42	Tree (Road)

Report date:
01 Apr 2022

GRAFFITI SNAPSHOT

March 2022

Ward & Suburb Insights



Ward Reporting

This is an indication (compared to the previous month) of how active our citizens are. Several people may report the same “tag” so this is not the best way to determine the amount of graffiti present.

Ward	# of Tickets	% Monthly Change	# of Tickets - Previous Month
Central	594	19%	500
Coastal	182	117%	84
Linwood	158	22%	129
Heathcote	106	-13%	122
Halswell	60	76%	34
Riccarton	59	23%	48
Banks Peninsula	57	119%	26
Spreydon	55	-37%	87
Innes	53	56%	34
Burwood	51	38%	37
Papanui	47	-4%	49
Harewood	43	19%	36
Hornby	43	48%	29
Cashmere	35	-40%	58
Fendalton	27	-16%	32
Waimairi	24	118%	11
Total	1,594	21%	1,316

Ward Removal

This is an indication (compared to the previous month) of how much graffiti has been removed. This gives a better indication of the amount of graffiti present.

Ward	Cleaned Graffiti
	Latest Month Previous Month
Banks Peninsula	247 160
Burwood	189 357
Cashmere	86 35
Central	4,015 1,710
Coastal	1,036 353
Fendalton	132 95
Halswell	364 166
Harewood	285 232
Heathcote	315 362
Hornby	144 139
Innes	351 118
Linwood	1,616 242
Papanui	188 175
Riccarton	134 118
Spreydon	384 153
Waimairi	86 37
Total	9,569 4,451

Reporting Hot Spots

Streets/Locations with the most reported graffiti

Street	# of Tickets	% Monthly Change	# of Tickets - Previous Month
Colombo	39	-30%	56
Tuam	32	967%	3
Cashel	26	550%	4
Brighton	24	2300%	1
Cathedral	22	267%	6
Oxford	22	100%	11
Durham	21	425%	4
Thomson Park	18	350%	4
Opouira Knights Stream Park	15	150%	6

Removal Hot Spots

Streets/Locations with the most graffiti removed (m2)

Street	Cleaned Graffiti Square Metres
Lismore Street \ Falsgrave Street	576
Washington Way Reserve	430
Colombo	306
Lismore	288
Cranmer	210
Marine Parade \ Bowhill Road	207
Cashel	177
Thomson Park	163
Moorhouse Avenue \ Colombo Street	162
Cambridge	145
Falsgrave Street \ Lismore Street	144
Lismore Street	144

GRAFFITI SNAPSHOT

March 2022

Further Insights

Reporting Activity

	This Month	Previous Month
Unique Reporters	290	299
Total Reports	1594	1291
Highest # of reports by individual	178	257

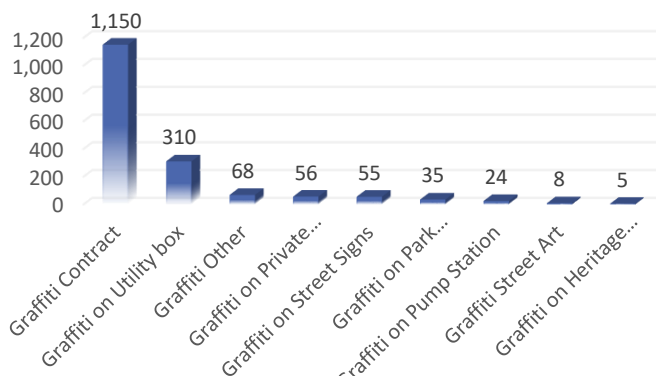
Most reported TAG Locations and details of these TAGS are forward to the Police each month.

KP

GECO

TWK

Reports by Asset Type



Police Data

	Court Action	Informal Warning
Canterbury Metro	1	1

New Murals

Murals from The Flare Street Art Festival located in SALT District, Ōtautahi.
Find out more about the artists, events and locations: <https://flare.nz/> and @flarestreetartfestival.



Christchurch
City Council

GRAFFITI SNAPSHOT

March 2022

New Murals



Item 11

Attachment D

There are some streets and a reserve in the suburb of Middleton that I believe are extremely inappropriately named. Specifically:

Marylands Place

Magdala Place

Nazareth Avenue

Marylands Reserve

My former brother-in-law was a 'pupil' at Marylands and during his time there was subjected to abuse.

My late cousin was an abandoned child at St. Joseph's Girls Orphanage and when that closed at Nazareth House Orphanage. At the age of 13 she was sent to Mount Magdala Home which operated a Magdalene Laundry. It's worth noting the Mount Magdala was an institute for "fallen women", something I can barely believe my cousin was at the age of 13.

This is not just about being politically correct (an expression I loathe); it's about recognizing that we should not as a society be honouring places where much harm was done to children.

In my opinion, it is time for the Christchurch to re-think the names of those places.

I am not a Christchurch resident, although did live there for a short period some years ago. I also have a family member who lives in an adjoining suburb to Middleton, and I know she finds those names inappropriate too.

Memos



Memo

Date: 6 April 2022
From: Toni Dakers, Traffic Engineer
To: Amy Hart, Community Board Advisor
Cc:
Reference: 22/441414

Te Kōmanawa Rowley School - Response to request for Kea Crossing

1. Purpose of this Memo

- 1.1 The purpose of this memo is to respond to the Waihoru Spreydon-Cashmere Community Boards request for staff to provide advice on a request for a Kea crossing to be installed on Rowley Avenue outside Te Kōmanawa Rowley School.
- 1.2 This action was generated in response to correspondence from the Principal of Te Kōmanawa Rowley School that was presented at the Waihoru Spreydon-Cashmere Community Board meeting on 5 October 2021.
- 1.3 The correspondence related to a request for a Kea Crossing to be installed to improve safety for students crossing Rowley Avenue.

2. Update

- 2.1 Staff met with members of the Community Board and the Principal of Te Kōmanawa Rowley School on 6 December 2021. The purpose of this meeting was to better understand the concerns raised in the initial correspondence and observe behaviour during the morning peak periods.
- 2.2 One of the initial factors staff consider when assessing a pedestrian facility for funding prioritisation is the number of students that will likely use this crossing. In this location the main driver is not necessarily the number of students crossing Rowley Avenue but a combination of other factors specific to this particular school. These broadly include that this is a growing roll, a number of young students walk to school without adult supervision, and the future works on Halswell Road that are likely to change traffic patterns in the wider area.
- 2.3 At the December meeting it was agreed that staff would develop a scheme plan for a Kea Crossing immediately north of the schools pedestrian entrance. The scheme plan is included as Attachment A to this memo.
- 2.4 The scheme includes extending the kerb build outs to narrow the required crossing distance to 9 metres. The proposal will reduce the available kerbside parking provision along the school frontage by around four spaces.
- 2.5 At the time of the December meeting, this project was subject to funding approval. Funding has since been allocated to progress this work.

Memos



3. Conclusion

- 3.1 A proposal to install a Kea Crossing outside Te Kōmanawa Rowley School has been developed.
- 3.2 Staff will provide an update to the School's Principal before consulting with the wider Community. Consultation is planned to progress as soon as possible this financial year.

Attachments Ngā Tāpirihanga

No.	Title	Page
A	Scheme Plan - Proposed Kea Crossing	

Signatories / Ngā Kaiwaitohu

Author	Toni Dakers - Traffic Engineer
Approved By	Katie Smith - Team Leader Traffic Operations

Memos



Memo

Date: 6th January 2022
From: Tony Armstrong
To: Spreydon-Cashmere Community Board
Cc:
Reference: 22/11296

Planting near Ernle Clark Reserve

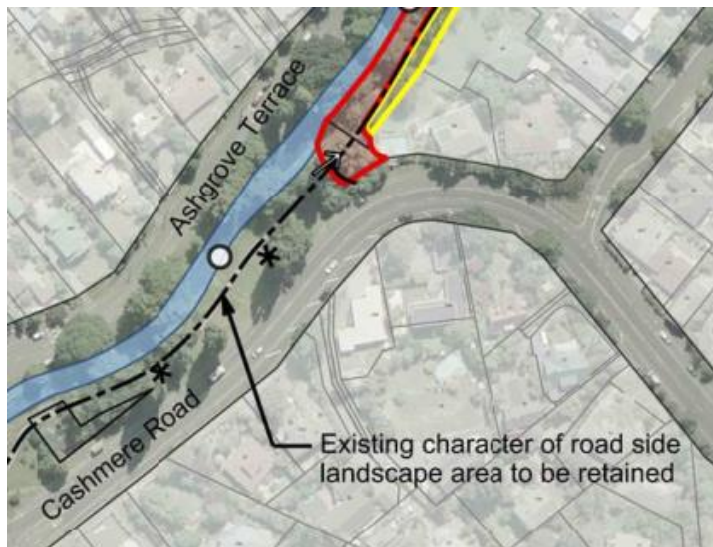
1. Purpose of this Memo

- 1.1 The purpose of this memo is to advise the Board in response to their resolution (4.3) from meeting of 20 October 2021, that :
 - 1.1.1 Staff advise on the reason for planting two replacement exotic trees adjacent to Ernle Clark Reserve near Barrington Street, which is within a site of ecological significance in the Christchurch District Plan.
 - 1.1.2 Staff advise on whether the planting of two exotic trees adjacent to Ernle Clark Reserve near Barrington Street complies with the Council's Tree Policy, including the requirement to consult with an ecologist.
 - 1.1.3 Staff brief the Board and the Friends of Ernle Clark Reserve about the implementation of the Council's Tree Policy, particularly planting natives in urban areas.

2. Update

- 2.1 The removal of the two trees and the replacement planting plan was undertaken in January 2021, prior to the adoption of the Tree Policy.
- 2.2 The reason for the planting was to replace the two trees (Poplar and Willow) removed with same species, as is standard practice in road corridor where possible, and in accordance with the design principles of the Mid Heathcote River Master Plan and the Ernle Clark Reserve Landscape Plan (see image below). Input to the replacement trees was also provided by the residents living adjacent.
- 2.3 Whilst Ernle Clark Reserve is specifically listed in the Heathcote River Sites of Ecological Significance (SES) listed in the District Plan (9.1.6.1), the area adjacent, i.e. where the replacement trees were planted, is road corridor and the District Plan notes that areas of drive and road carriageway, lawn, and/or amenity planting within the SES are not included.

Memos



- 2.4 At the time of the tree removal it was standard practice to replant a single tree for every tree removed. With the implementation of the Tree Policy (section 1.9) we are now required to plant a minimum of two trees for every tree removed.
- 2.5 In future section 1.4 of the Tree Policy, which sets out the requirement to consult an ecologist in reference to planting in sites of ecological significance (SES) as well as sites adjacent, is also noted, in particular *where other species are necessary for specified reasons as above*.
- 2.6 As a single tree has been planted for each of those removed, Council are willing to plant a further two trees to meet the requirements of 1.9 of the recently adopted Tree Policy. The species selection will be made with input from the Council's ecologist, and Council would also welcome input from the friends of the Ernle Clark Reserve as they have an invested interest in the area.
- 2.7 The Tree Policy states that the location of any replacement trees in the road corridor will be based on "(1) in the same road corridor in as close proximity to the tree removed. (2) if no further planting in the road corridor is required or possible then in the closest road corridor that requires either new or additional planting or (3) within the Urban Forest".
- 2.8 With regard to briefing the Board and the Friends of Ernle Clark Reserve about the implementation of the Council's Tree Policy, particularly planting natives in urban areas, the Tree Policy does not specify any tree type preference other than the requirements listed under 1.4.

3. Conclusion

- 3.1 The removal and replacement of the trees in the road reserve adjacent to Ernle Clark reserve was undertaken following Council's standard practice prior to the implementation of the Tree Policy.
- 3.2 Input to the replacement trees was provided by the residents living adjacent to the trees and followed the Heathcote River Master Plan and Ernle Clark Landscape Plan. A further two trees will be planted to meet the new requirements of the Tree Policy which Council will seek advice from the Council's ecologist and input from the Friends of Ernle Clark Reserve.

Memos



- 3.3 The Urban Forest Plan is currently being developed and will cover species selection in more detail.

Attachments Ngā Tāpirihanga

There are no attachments to this report.

Signatories Ngā Kaiwaitohu

Authors	Tony Armstrong - Arborist Toby Chapman - City Arborist Katie Smith - Team Leader Road Amenity and Asset Protection
Approved By	Steffan Thomas - Manager Operations (Transport) Lynette Ellis - Head of Transport & Waste Management

Waihoru Spreydon-Cashmere Community Board – Funding Balances

Discretionary Response Fund 2021-22	
Starting Balance	\$74,416
Community Board - Communicating With The Community	\$4,000
Community Board - Off The Ground Fund	\$3,000
Community Board - Youth Achievement and Development Fund	\$4,000
Cracroft Community Centre - TV	\$1,000
St Martins Bowls Incorporated - the Clubroom Redecoration project	\$2,000
Community Board - Community Events	\$8,500
Community Board - Summer With Your Neighbours	\$3,000
Community Board - Community Awards	\$7,000
Southern District Cricket Club	\$3,500
Cashmere Emergency Response Team (CREST)	\$836
Community Board - Summer With Your Neighbours (supplementary)	\$535
Southern United Hockey Club	\$1,500
St Martins Scouts Group	\$3,000
Sydenham Junior Cricket Club - Participation for Targeted Groups	\$2,500
Rowley Resource Centre - Shed for sports and events equipment	\$5,500
Total Spent	\$49,871
Balance Remaining	\$24,545

Youth Development Fund 2021-22	
Starting Balance	\$4,000
Ruby Roy	\$250
Ella Wells	\$100
Sophie Wells	\$100
Malakai Bennett	\$450
John Laurie	\$200
Max Groer	\$200
Samuel Curtis	\$200

James Wright	\$200
Indy Phillips	\$400
Ethan Jackson	\$200
Total Spent	\$2,300
Remaining Balance	\$1,700

Off the Ground Fund 2021-22	
Starting Balance	\$3,000
Somerfield Playcentre – Barking/New Planting around New Whare	\$300
Rowley Resource Centre – Rowley Vaccination Clinic	\$300
Total Spent	\$600
Balance Remaining	\$2,400

12. Elected Members' Information Exchange Te Whakawhiti Whakaaro o Te Kāhui Amorangi

This item provides an opportunity for Board Members to update each other on recent events and/or issues of relevance and interest to the Board.

Karakia Whakamutunga