

## **Sustainability and Community Resilience Committee MINUTES ATTACHMENTS**

---

**Date:** Wednesday 30 March 2022  
**Time:** 9.30am  
**Venue:** Held by Audio/Visual Link

---

<b>TABLE OF CONTENTS</b>	<b>PAGE</b>
<b>4.1. Public Forum - Sustainable Coastlines</b>	
A. Emma Hunter - Presentation .....	3
<b>4.2. Public Forum - Historic Places Canterbury</b>	
A. Mark Gerrard - Presentation .....	12
<b>8. Community Facilities update report</b>	
A. Community Facilities Update .....	13

---





# Pre-Production Pellet Pollution in the Avon-Heathcote Estuary/ Te Ihutai

*Emma Hunter – 30th March 2022*





Edinburgh Napier  
UNIVERSITY

Supervisor Dr Rob Briers

**CONTACT:**  
emmacaitlinhunter@gmail.com



*microplastics*

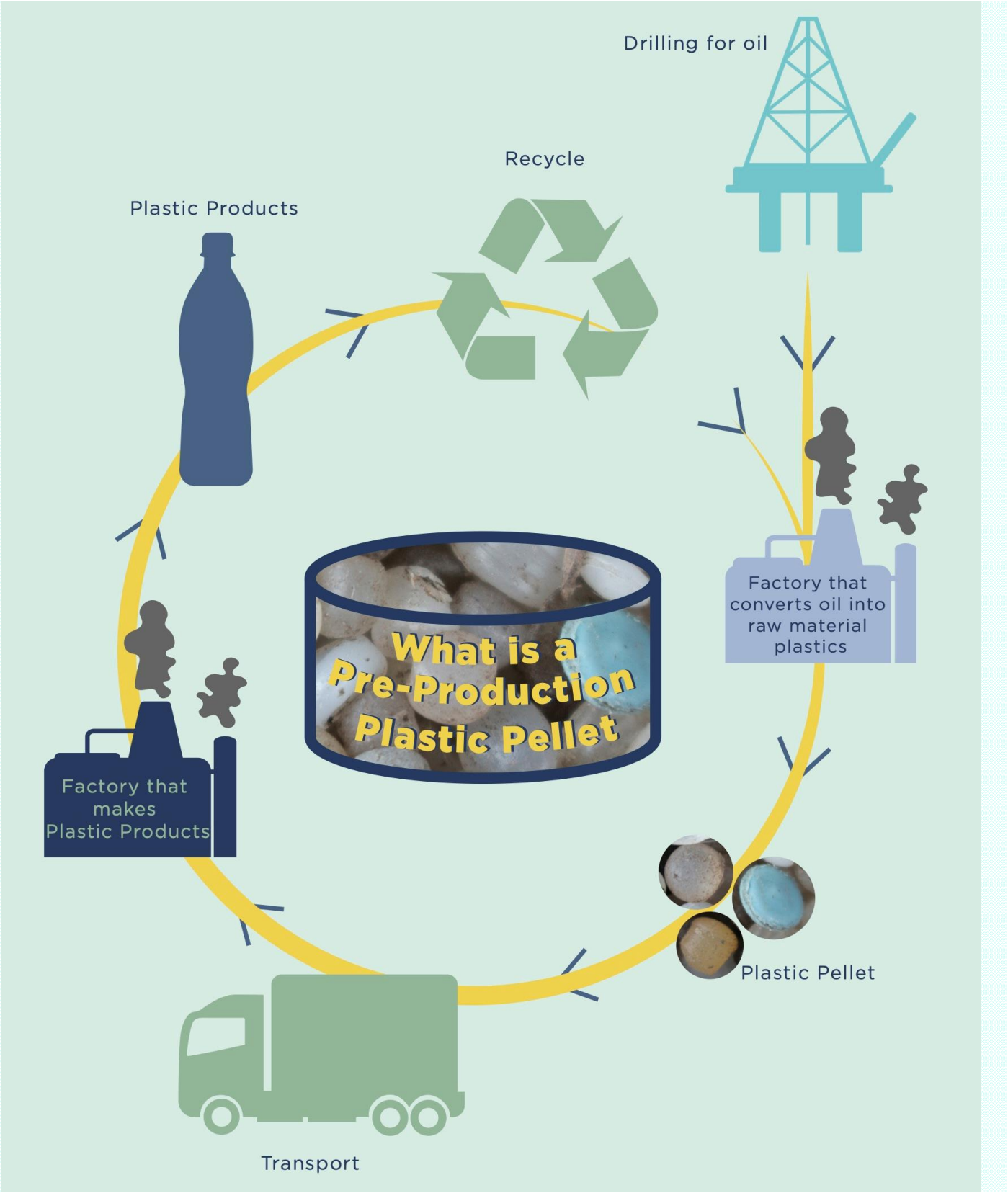
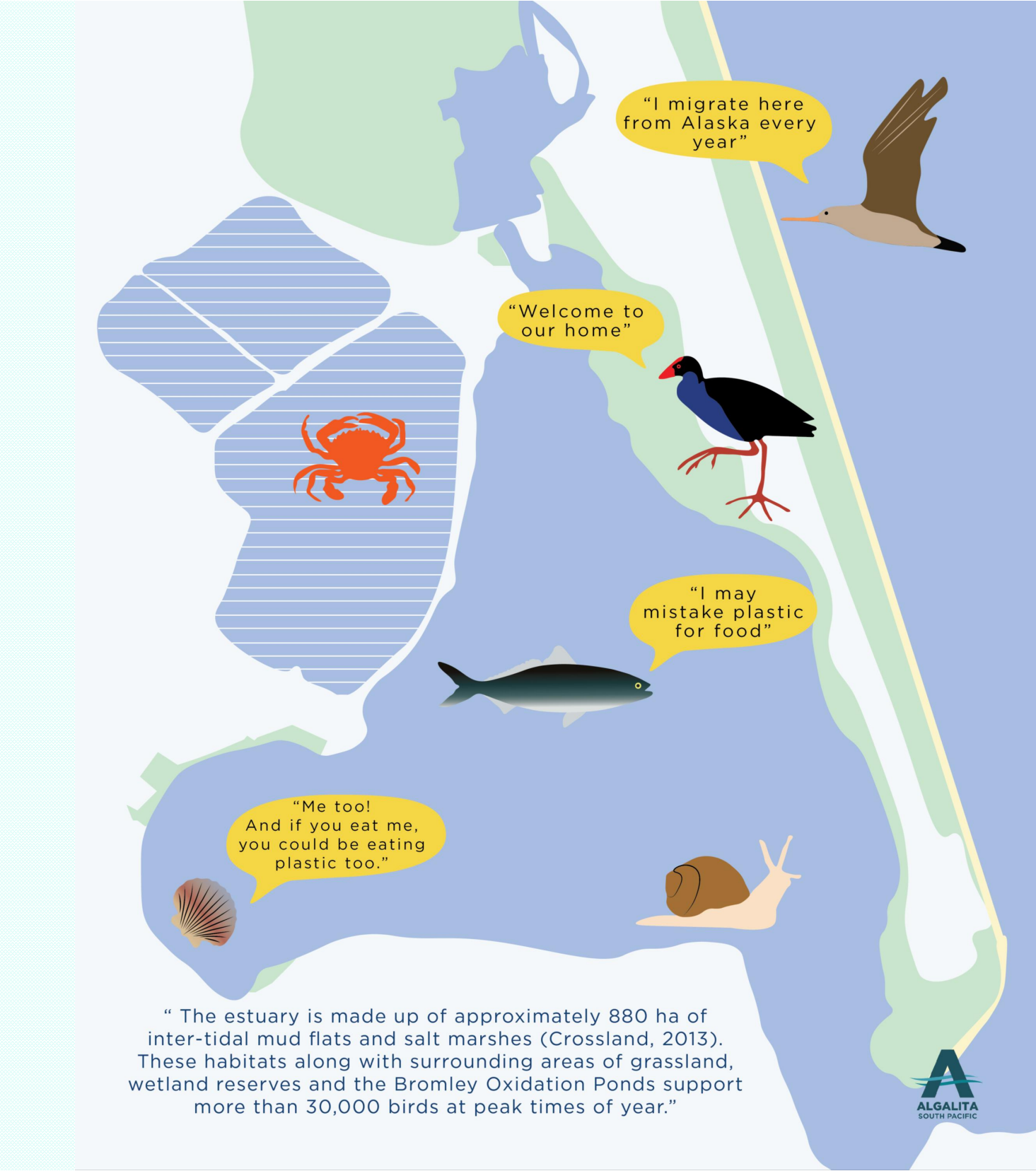


*Article*

## Quantification and Characterisation of Pre-Production Pellet Pollution in the Avon-Heathcote Estuary/Ihutai, Aotearoa-New Zealand

Emma Caitlin Hunter <sup>1,\*</sup>, Raquelle de Vine <sup>2</sup>, Olga Pantos <sup>3</sup>, Phil Clunies-Ross <sup>2</sup>, Fraser Doake <sup>3</sup>,  
Hayden Masterton <sup>3</sup> and Robert A. Briers <sup>1</sup> 

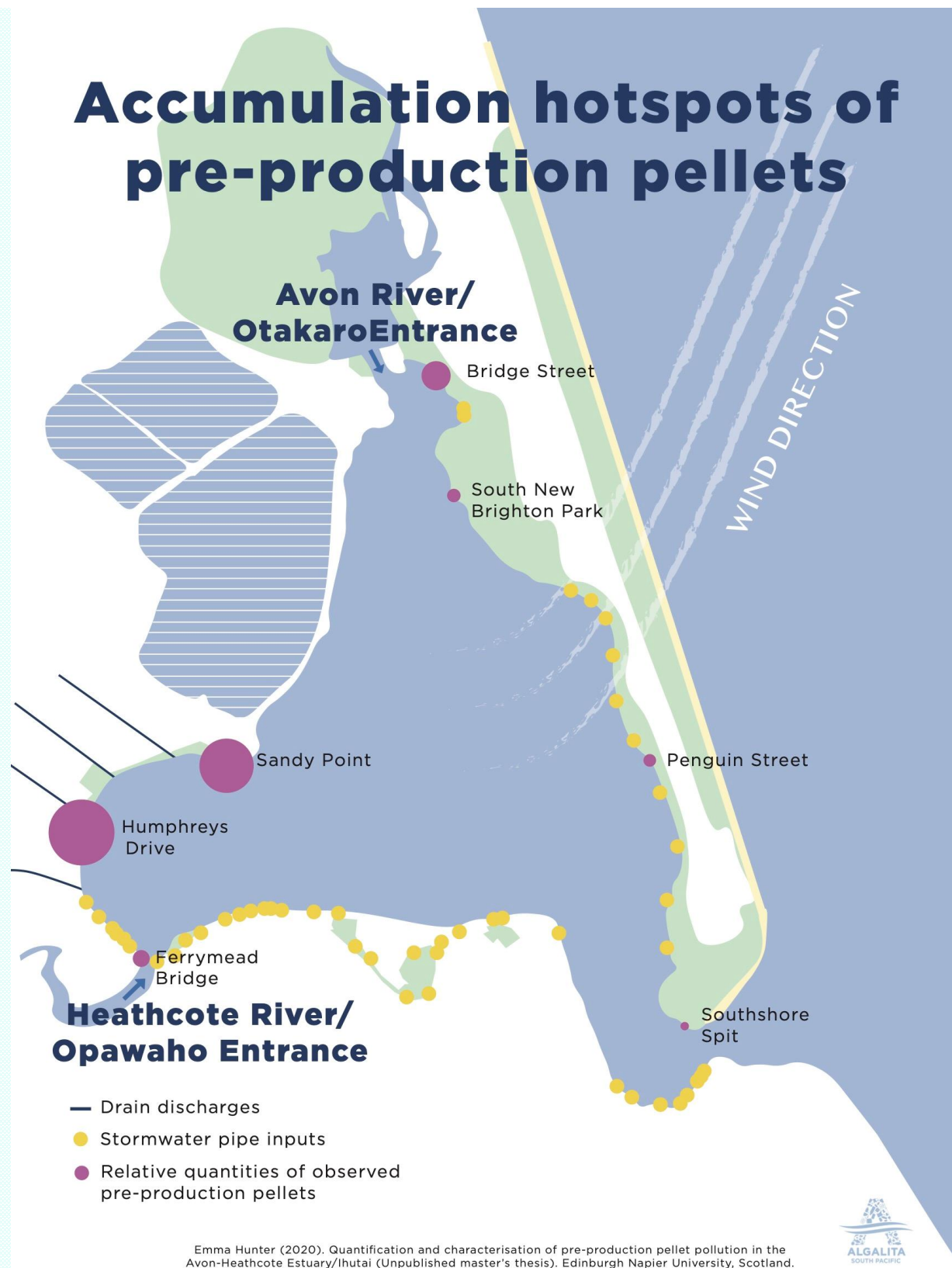






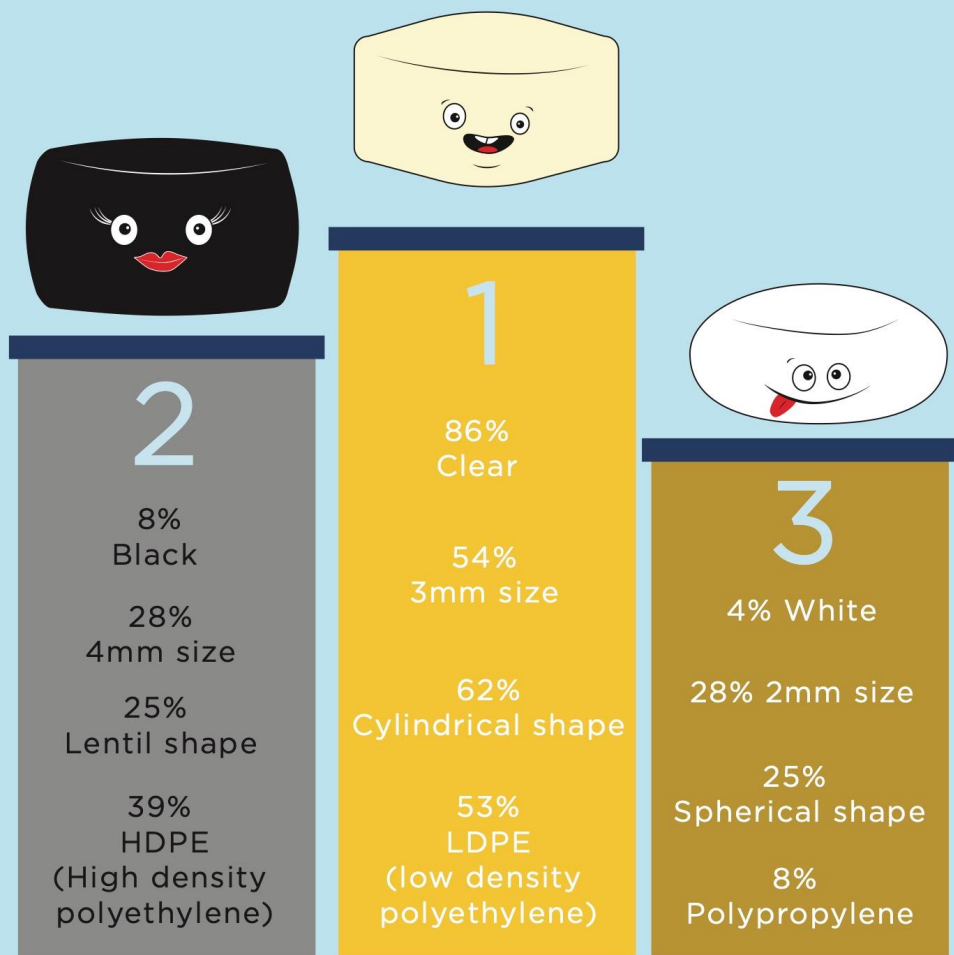






- 3819 pellets across 7 sites, 35 samples
- Bridge Street abundance higher than FB, SS, PS
- High variance within sites
- Downwind accumulation
- Proximity to river outlets, stormwater pipes, drain outlets





In this study, the most frequently identified characteristics of pre-production pellets in the Avon-Heathcote Estuary/Ihutai were clear, cylindrical, 3mm size and made of LDPE (low density polyethylene). Possible products these types of pellets can be made into are plastic bags, protective sheeting, industrial pipes, cling film, plastic packaging, bottles, toys to name a few!

Emma Hunter (2020). Quantification and characterisation of pre-production pellet pollution in the Avon-Heathcote Estuary/Ihutai (Unpublished master's thesis). Edinburgh Napier University, Scotland.



# Types of Plastic

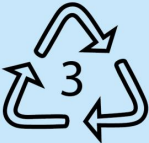
Polyethylene terephthalate



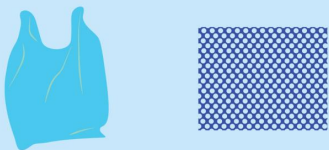
High density Polyethylene



Polovinyl chloride



Low density Polyethylene

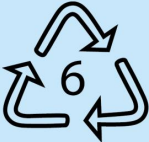


"The most frequent pre-production pellet polymer type observed in the Avon-Heathcote Estuary/Ihutai was LDPE (low density polyethylene) (53.1%)"

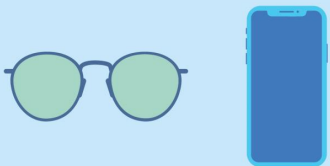
Polypropylene



Polystyrene



Other




Emma Hunter (2020). Quantification and characterisation of pre-production pellet pollution in the Avon-Heathcote Estuary/Ihutai (Unpublished master's thesis). Edinburgh Napier University, Scotland.






# Solutions

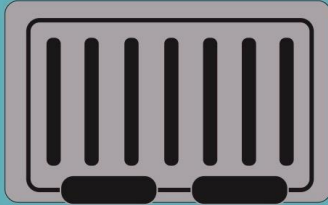
**Prevent pellet loss**  
through improved handling and adoption of best management practices by the plastics industry. For example, minimising pellet loss at truck loading or unloading. Operation Clean Sweep® has great guidelines for businesses to follow.






**Use less plastic in general:**  
as the feedstock for plastic items, less demand for plastic = less pellets. Get creative with alternatives to everyday plastic items and support businesses that are doing the same.


**Stop pellets travelling down stormwater drains and into the freshwater environment.**  
Sieve like designs such as LittaTrap™ can capture pellets before they make their way into nature.





**Build awareness of the problem,**  
let's get talking about plastic pollution!

Emma Hunter (2020). Quantification and characterisation of pre-production pellet pollution in the



Gratitude and thanks to:







Programme Coordinator,  
Ōtautahi/Christchurch  
[emma@sustainablecoastlines.org](mailto:emma@sustainablecoastlines.org)



Public Forum Presentation to the  
Christchurch City Council Sustainability and Community Resilience Committee  
by Historic Places Canterbury  
30<sup>th</sup> March 2022



*The Voice of Heritage*

Chair, Mayor and Councillors, Thank you for allowing  
Historic Places Canterbury to make this Public Forum presentation.

Historic Places Canterbury (HPC) as you will be aware has expressed our concerns with the report  
on the Upper Riccarton War Memorial Library.

They were briefly the following:

HPC could not find a Heritage Assessment from the Heritage Team.

We could find no reference to the CCC Strategy "Our Heritage Our Taonga".

Lack of Public Engagement.

Recently, I made a personal Deputation to the Waikura Linwood-Central-Heathcote Community  
Board concerning the recommended demolition of the Woodham Park Caretaker's Residence. My  
Deputation raised the same three criticisms as HPC raised on the Upper Riccarton War Memorial  
Library report. The Community Board resolved for the report to lay on the table whilst a Heritage  
Assessment is done and Public Engagement on the future of the building is sought.

HPC is very concerned there may be a pattern that if a building is not listed or scheduled then "Our  
Heritage Our Taonga" does not apply nor should advice or input from the CCC Heritage Team be  
sought.

If this is the case, HPC believes this is contrary to Our Heritage Our Taonga. HPC considers it  
should be the CCC default setting, and the Staff should be proactive on this, that if there is a  
decision to be made on a building which has a social history or heritage, no matter how minor,  
whatever its District Plan status, Our Heritage Our Taonga applies and Heritage Team advice and  
input should be sought. This advice/ input should be sought very early in the CCC processes.  
HPC seeks your support for this.

HPC is concerned Public Engagement priority is determined by the early decision making made  
leading up to the final report. HPC considers where practical Public Engagement should occur  
early on in the CCC processes to determine if there is community interest in the future of a building.  
HPC seeks your support for this.

The greenest buildings is the one that already exists. (Publication: "There's No Place like Old  
Homes. Re-use and recycle to reduce carbon" Historic England.)

HPC respectfully requests the CCC and its entities should adopt Whole of Life Carbon Cycle  
Costs when costing its buildings. Any comparison between refurbishment of an existing and  
demolishing / building new should include these costs. (The demolition costs should include end of  
life costings.)

HPC has an interest in the future of the Barnett Avenue Pensioner Cottages, the Council's first and  
New Zealand's first Council elderly housing. HPC has the expectation the Heritage Team should be  
consulted on their Heritage significance.

HPC seeks your support that for any financial calculations relating to any decisions on the future  
of the Barnett Ave Cottages include Whole of Life Carbon Cycle Costs for both refurbishment and  
demolition/new build (the demolition costs the include end of life costings).

Thank you for listening to this Public Forum presentation.

Mark Gerrard  
Chair Historic Places Canterbury

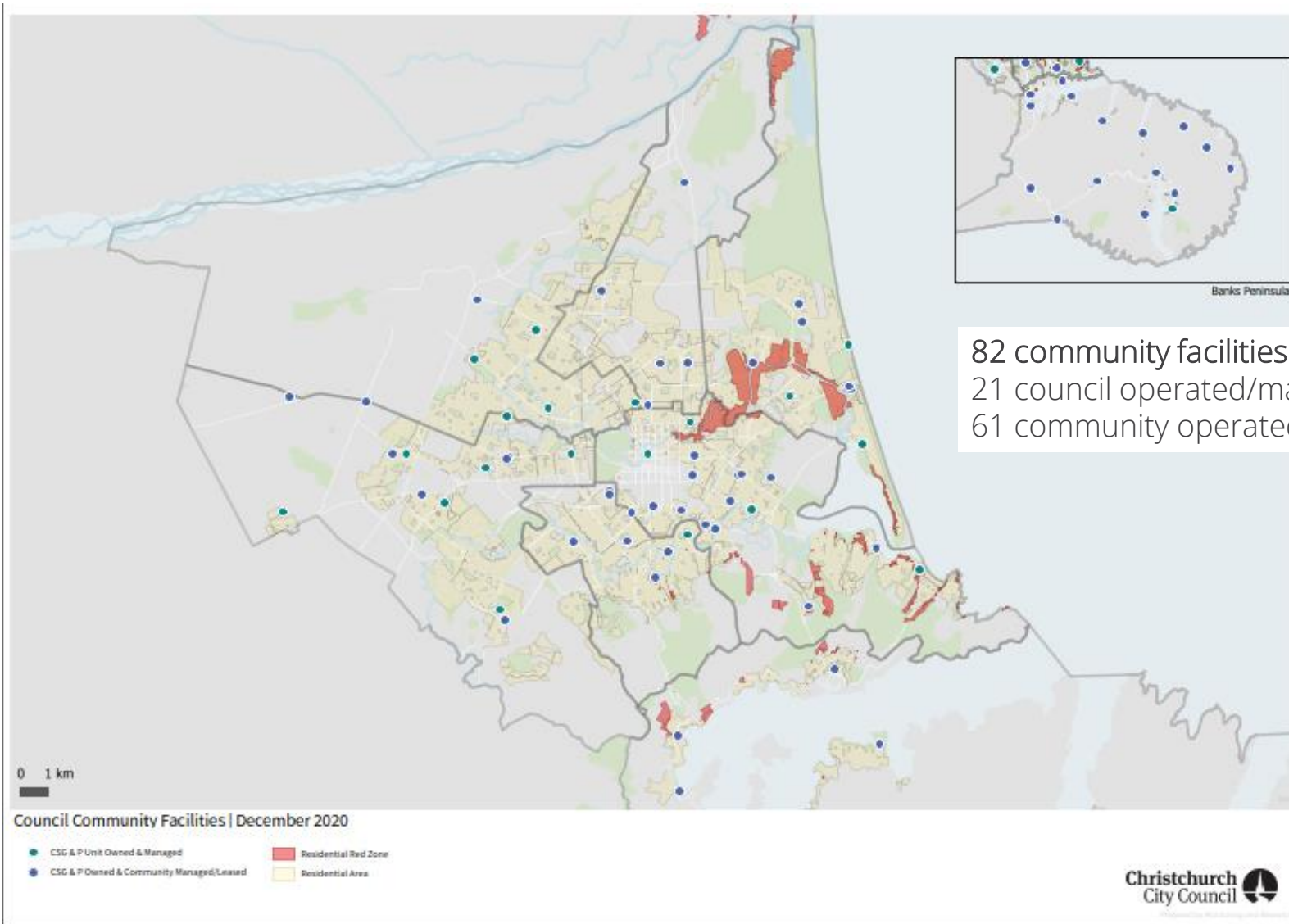


# Community Facilities Update

Sustainability and Community Resilience Committee

30 March 2022

1



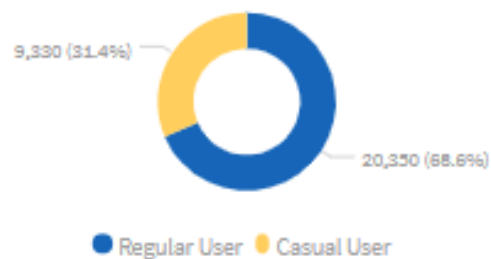
82 community facilities  
21 council operated/managed (venues for hire)  
61 community operated/managed



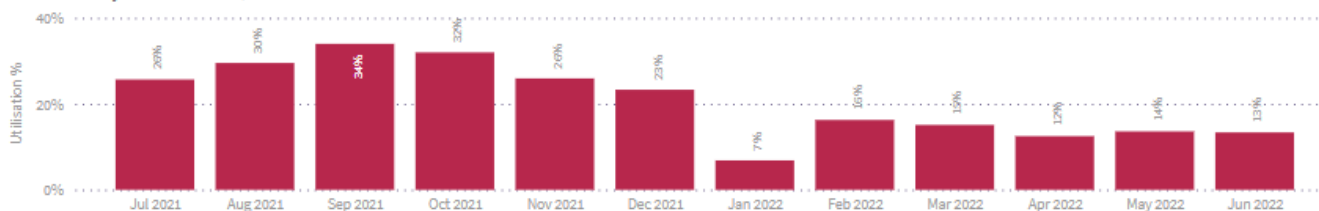
## Council operated/managed venues for hire

	2018/2019	2019/2020	2020/2021	2021/2022
Number of bookings	17,636	13,872	16,314	10,130
Total Booked Hours	53496.75	39764.00	46151.75	29459.50
Revenue	\$669,289	\$500,122	\$704,283	\$478,104
Regular Hirers (percentage)	85.6%	84.9%	70.8%	69.6%
Casual Hirers (percentage)	14.4%	15.1%	29.2%	30.4%

Actual Hours Booked FYTD as at Jun-2022



Utilisation by Month in 2021/2022 for All Facilities

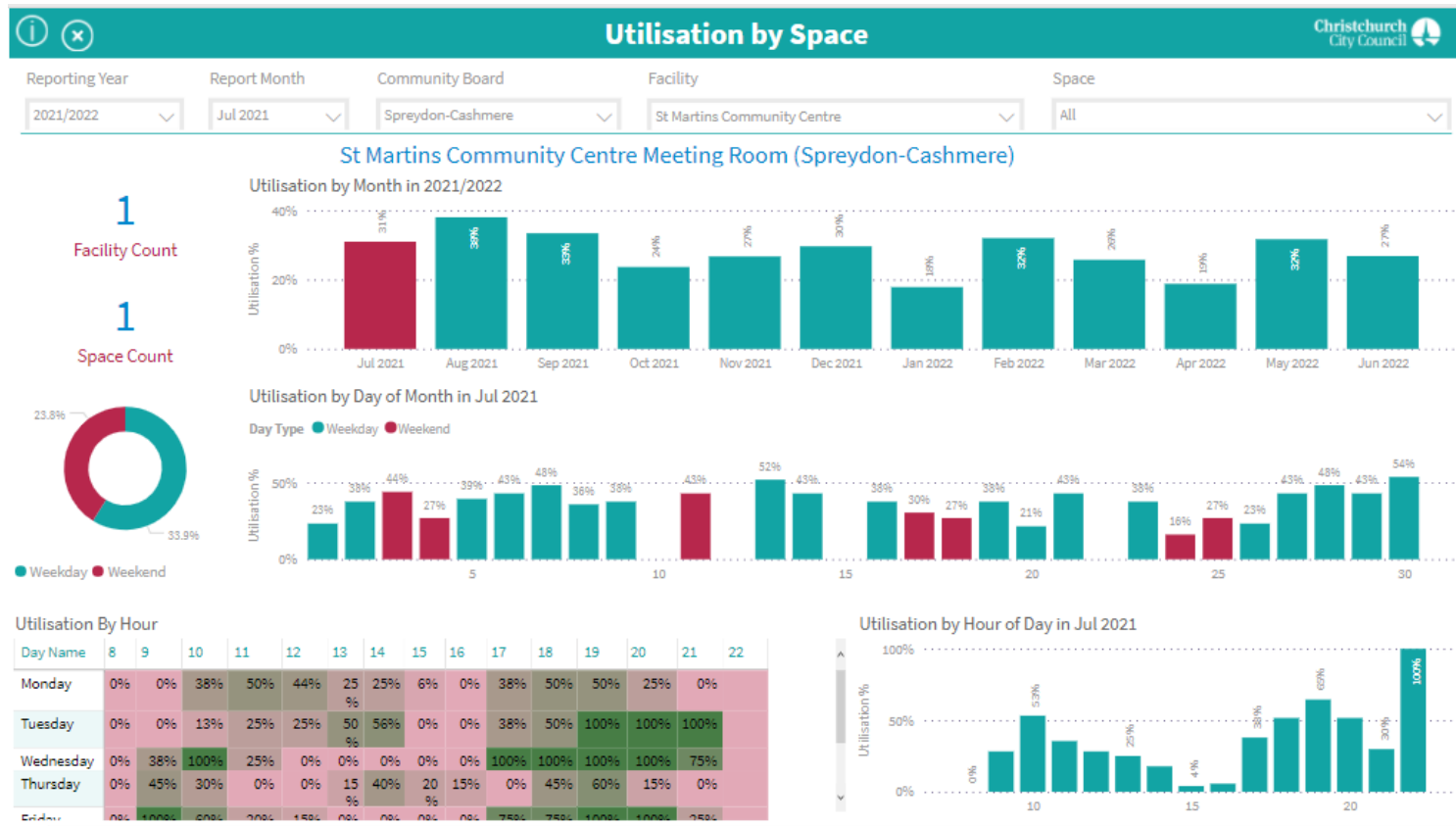




# Council operated facilities – draft dashboard reporting for Community Boards

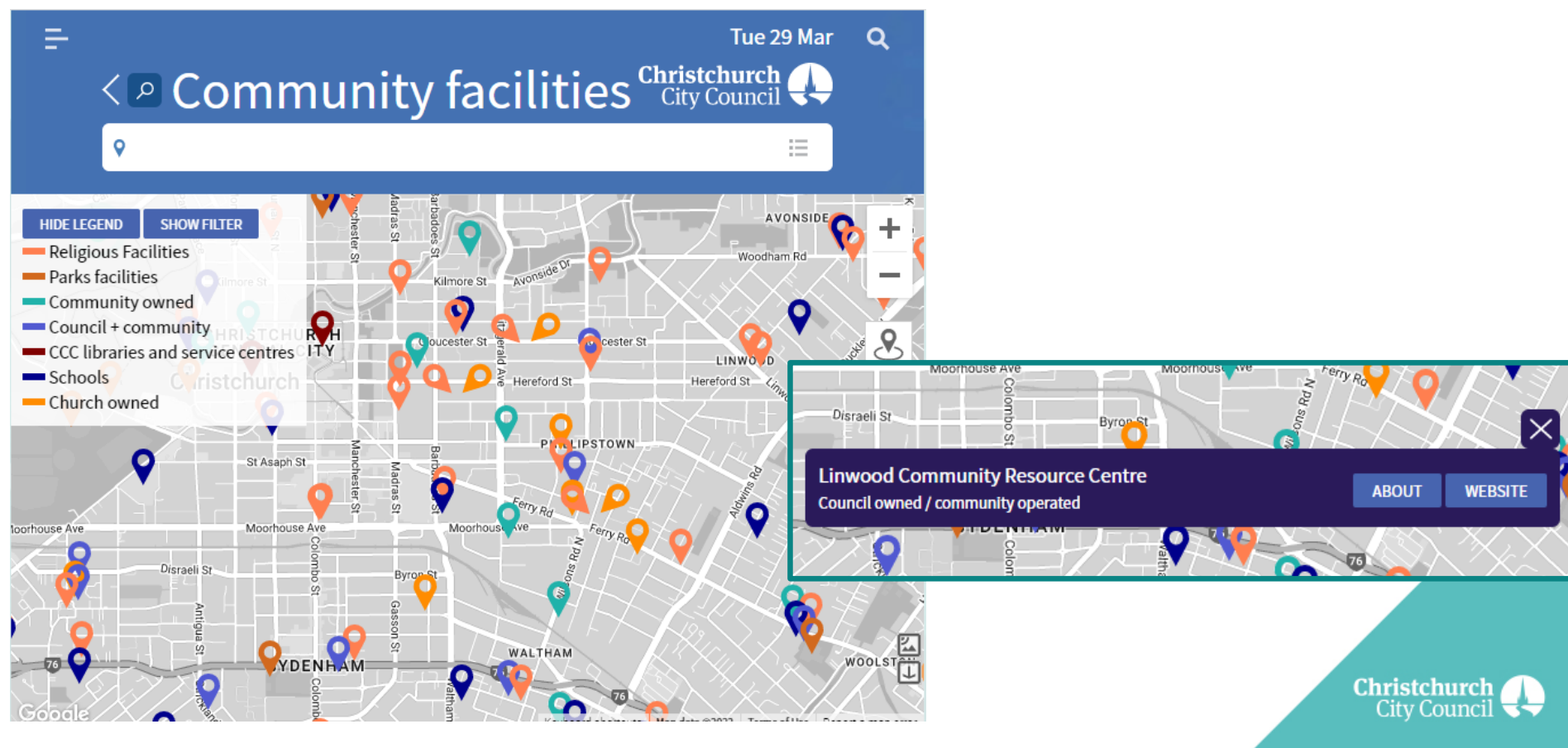
Item 8

Attachment A





## Community facilities map



## WOOLSTON COMMUNITY CENTRE



The collaboration between CCC & Te Waka Unua School has allowed access to the Woolston Community Centre providing opportunities for the children and adults in the community to provide activities otherwise limited without suitable spaces available. You will see below a variety of activities that have already taken place in this space over the past 2 months bringing new life to this previously under utilised resource.

Janeane Reid (Principal)



Te Waka Unua School take our responsibility as guardian for this space seriously. Ensuring it provides a hub for our community to connect, learn, support and guide each other as the priority.



### PASIFIKA AFTERSCHOOL PROGRAMME



"We love using this space to learn Samoan Language. We all run there after school, we sneak in the back door to greet our tutors"  
Leah



### COVID VACCINATION DROP IN



"My Mum took me to get my vaccination after school at the Community Centre. The nurses were really kind and I wasn't even nervous"  
Isla

### Pride & Responsibility

Our students have had the opportunity to take responsibility for caring for the Community Centre. Cleaning up damage & learning about the CCC graffiti reporting system.



### Life Skills Lessons

Senior students have benefitted from using the space to learn about healthy eating and budgeting.



### Samoan Study Support Centre

Three afternoons a week from 3-5:30pm a Samoan Language support centre operates out of the community centre



### COVID-19 Vaccination Clinic

Pegasus Health provided a drop-in Vaccination Clinic to the local community during the first week of March





## Community activation

Neighbourhood  
Links  
Supporting food  
resilience in the  
Redwood/Northcote  
area

Lyttelton Recreation  
Centre  
13 regular  
programmes/classes  
including youth  
programme, Te Reo  
Māori classes

Toy Libraries /  
Play centres  
Volunteer run  
provision for young  
families



7

## Rural community support

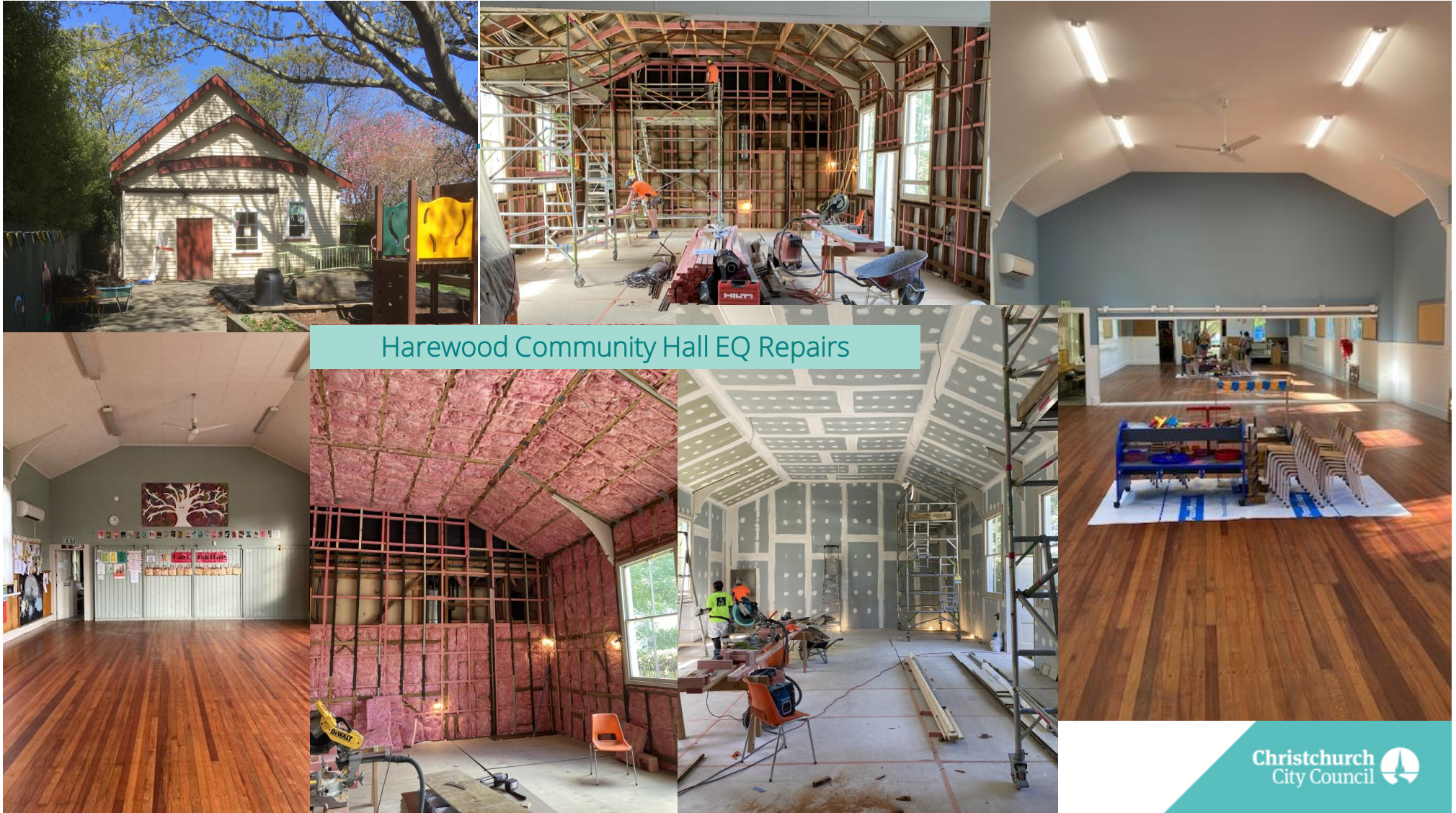
Port Levy  
Community Hall  
'Summer with  
your Neighbour'  
event



Allandale Community  
Hall  
Booked daily during  
January with approx.  
100 people attending  
each event

Ouruhia Hall  
Community  
partnership model  
supports this popular  
venue for rural locals  
and wider community









Waimairi Road  
Community Centre  
Refurbishment  
completed March  
2022

