

Waitai Coastal-Burwood Community Board
Public Forum Briefing
NOTES ATTACHMENTS

Date: Monday 28 February 2022
Time: 3.05pm
Venue: Audio/Visual Link

TABLE OF CONTENTS	PAGE
2. Council Parks, Regional Parks (Coastal and Plains), Residential Red Zone and Road Maintenance Update and Q&A	
A. Community Questions and Responses.....	3
3. Sustainable Coastlines in Ōtautahi/Christchurch	
A. Pre-production pellet pollution and Sustainable Coastlines Christchurch Presentation	7

Waitai Coastal-Burwood Community Board
Public Forum Briefing
Monday 28 February 2022

Question	Team/Unit	Answer
Why is the old Ascot golf course at the back of QE2 being so neglected? It is so well used but wasn't mowed over summer, poplars have sprouted cracking the new path, the disk golf course is substandard compared to other locations. For such a well used green space it should be maintained to at least a minimum agreed standard.	Parks	The Parks Unit are responsible for maintenance. Staff are working with contractors to capture all assets to maintain through contract.
I keep doing snap send solve. Waste of time. Why put in gardens and paving and do nothing to keep it looking tidy. Weeds bigger than plants in gardens near library. Spikes on lights but not on all posts so birds sit and poop down on seats. Rubbish bins rusting onto paving, weeds coming through paving gaps, Rubbish in gardens never cleaned up.... Given up !!!!! (Marine Parade New Brighton).	Road Landscape	Christchurch City Council use a combination of chemical and steam to deal with weed control. Due to this summer season being wetter than usual weed growth is an issue in places. Our contractor is aiming to deal with this however the resources are limited and also having to deal with exception grass growth due to the wetter weather. Normally in the height of summer the hot dry weather does not lead to grass and weed growth and resources are utilised to catch up on outstanding issues. Please continue to snap send solve, it is really appreciated so we can tackle these issues.
I would like to know why we have not stream lined the mowing of the grass One tractor from parks for the park. Ride on and tractor for the red zone mowing. One ride on for the Berms from roading. I understand they are different budgets but would it not make more sense to move the park grass budget to red zone budget and that would mean one less tractor and truck that brings the ride on. I am pretty sure Avondale will have the same issue.	Parks	Shifting community parks maintenance to the red zone has already begun to increase efficiency

Waitai Coastal-Burwood Community Board
Public Forum Briefing
Monday 28 February 2022

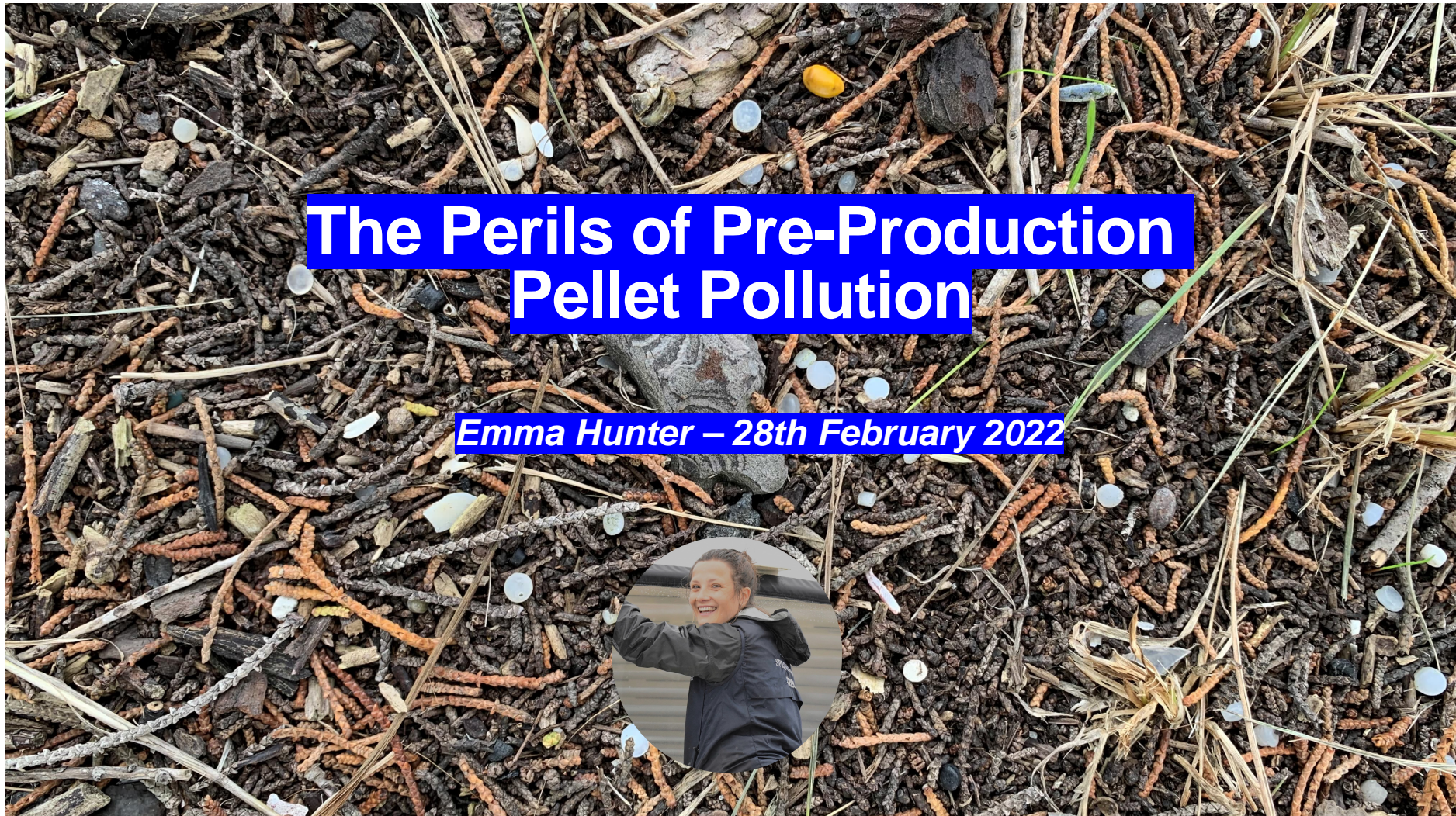
I have a question on parks and reserves in our ward Jo. About maintenance schedules and upkeep. And the vast differences in the parks across the city depending on where you live. Lack of bins, disability parks, vegetation upkeep and dangerous over grown tree's.	Parks	Parks maintenance schedules are consistent across the city. One ward does not receive any more or any less maintenance than the other.
Lack of planting and maintenance on the roundabouts especially the one at the Pages Road bridge into New Brighton. It could be a wonderful welcome with the large palm tree 🌴 I have reached out to the council and they have shown zero interest in addressing these concerns.	Road Landscape	This will be checked out and any additional planting undertaken. However please note that the roots of the Phoenix Palm often make it difficult for plants to establish around its base. For example we have tried several times around the bases of the palms in New Brighton Pedestrian Mall.
Just a thought. These roadside gardens (which look amazing) should have a Council status of 'ornamental' may I suggest that it would pay for the Community Board to check with staff if that is the case. If they are then perhaps a double check to make sure the contractors have them marked on their maps. If they aren't the Community Board can request they be upgraded to ornamental. We did this for the North Beach garden Plots and the contractors do a fab job on them.	Parks and Roding	Parks - The only road side gardens which hold ornamental status maintained in the parks contract are at North Beach.
They put bark down over all the weeds at Tairoa QE2....no prep or even getting rid of weeds.... a waste of bark as weeds will grow through and get worse.	Park	Beds are sprayed before mulching.
It's a shame that such a huge amount was spent on the design - fancy pavers, redoing the road surface etc etc etc and not even keeping the garden beds maintained is factored in. This would not happen in Sumner. (Marine Parade New Brighton).	Roding	Road Landscape has only just accepted this into the Road Landscape Contract following completion.

Waitai Coastal-Burwood Community Board
Public Forum Briefing
Monday 28 February 2022

Question from Adrienne Smith - what is happening with the Red Zone Land in Avondale? Sadly it gets to be a bit of a dumping ground at times. Thank you.	Residential Red Zone	Currently being maintained under 13 mows a year, fences have been removed where possible, amenity levels have increased with lease and license holder activation. There is active patrols of the area to pick up rubbish and there is dumping hot-spot signage. Assistance from the community is appreciated through the Snap Send Solve App.
We moved to the Prestons Park subdivision almost a year ago and we were really looking forward to be able to walk to the numerous parks and for our grandchildren to enjoy playing on the equipment, our closest park is corner of Prestons Park Drive and Aviemore and the state of this playground is nothing short of atrocious. Someone comes in and does a quick whizz with the mower but that's the extent of the maintenance. There are far more weeds than grass, thistles aplenty as you try to negotiate your way in and apparently there is a waterway there too but ever since we have moved in it has just looked like a large deep trench full of more weeds - shocking. Though I do find it intriguing that the parks and waterways in front of the show homes are well and regularly maintained by City Care. Funny that. Please do something to beautify ALL park areas of the subdivision - all the residents keep there properties tip top so the only blots on the land scape are the Council parks.	Parks	Subdivision green spaces are handed over to the Council from developers in stages. The Council are currently following up on sites in Prestons that the developer is not maintaining.

Waitai Coastal-Burwood Community Board
Public Forum Briefing
Monday 28 February 2022

<p>CCC Berm. I live on a corner section of Georgina Street, this has 3 berms. When I moved into the property the berm was littered with stones and rocks and very patchy grass. CCC expects residents to upkeep the berm at no cost to the CCC, I don't have an issue with this, but feel the CCC should provide a tidy berm in the first instance. Many residents have spent a lot of time and money repairing or re-doing the berm at their own cost. This is not a satisfactory outcome, and something I do not want to undertake on behalf of the CCC. I have been advised the CCC will review the berm in August 2022, this time frame is not satisfactory. * I would like the CCC to repair the berm to a better standard fronting my property. * * Stones and rocks I have now removed. * CCC should review berms on handover from the developer. Standard of walkways The walkways in the subdivision are not kept to a tidy standard, weeds and long grass are a common sight. CCC should review the schedule for maintaining the walkways to enhance the environment.</p>	Road Landscape	<p>This has been put on the Berm renovation list to be assessed in March 2022 however the original berm was installed by the sub division developer and should have been addressed at an earlier stage with the developer. Multiple reasons why berms are not to standard in particular the damage caused during site development.</p>
<p>QE11 landscape lack of maintenance (I see some mulch has been laid but the weeds are still growing through it)</p>	Parks	<p>Garden beds are sprayed before mulching. Mulch is applied to suppress weeds and retain soil moisture.</p>
<p>Prestons Park - waterways choked, weeds out of control along this network and playground reserves plantings are mostly dead replaced by huge weeds.</p>	Three waters and parks	<p>Parks - Subdivision green spaces are handed over to the Council from developers in stages. The Council are currently following up on sites in Prestons that the developer is not maintaining.</p>



Edinburgh Napier
UNIVERSITY

Supervisor Dr Rob Briers

CONTACT:
emmacaitlinhunter@gmail.com



microplastics



Article

Quantification and Characterisation of Pre-Production Pellet Pollution in the Avon-Heathcote Estuary/Ihutai, Aotearoa-New Zealand

Emma Caitlin Hunter^{1,*}, Raquelle de Vine², Olga Pantos³, Phil Clunies-Ross², Fraser Doake³, Hayden Masterton³ and Robert A. Briers¹

AVON-HEATHCOTE ESTUARY/ TE IHUTAI

BIOLOGY

- Key wildlife habitat: mud flats & salt marshes
- Migratory birds: East Asian-Australasian Flyway
- 10 bird species met the criteria for International Ramsar Convention: “*Significant Wetland*”

HISTORY

Settlement 600+ years

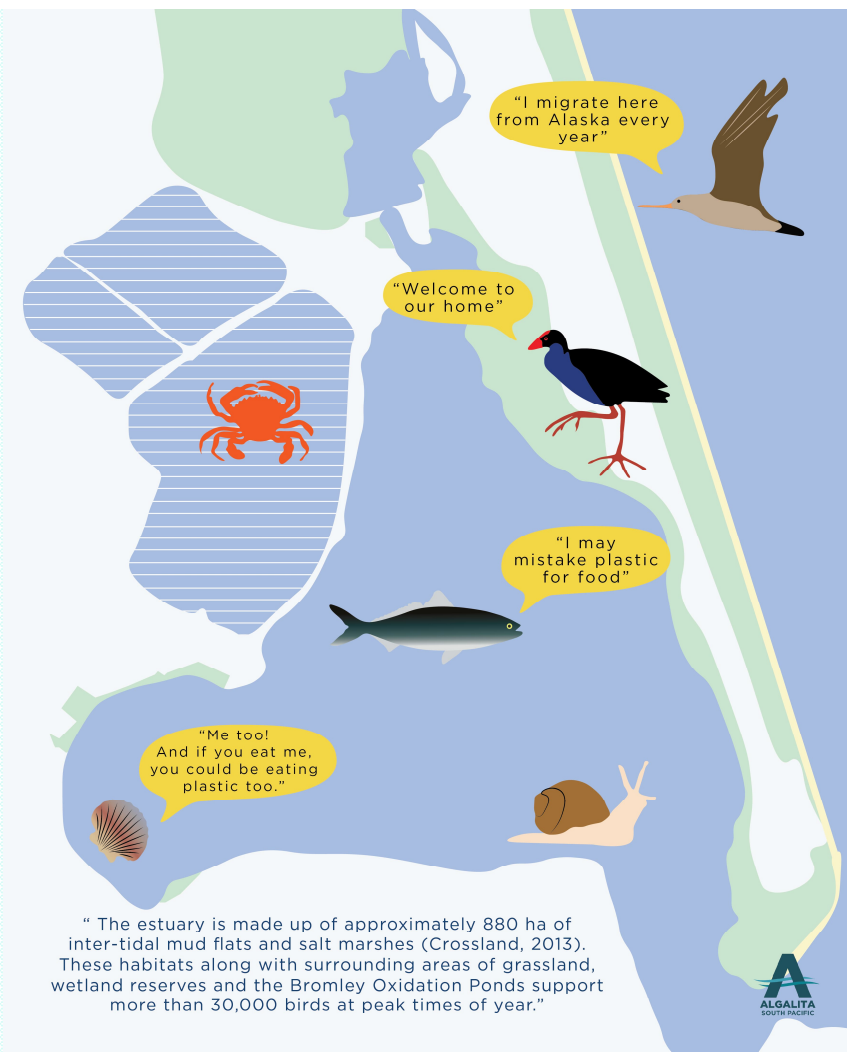
- 1290AD Waitaha
- 1500s Ngāti Mamoe
- 1600s Te Rūnanga o Ngāi Tahu
- 1850s Europeans

CULTURE

- Mahinga kai
- Ki uta ki tai - from the mountains to the sea

RECREATION

- wind surfing, sailing, walking etc



PLASTIC POLLUTION

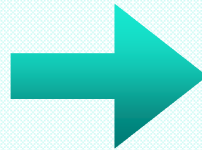
OXYGEN + WATER
BARRIER

LIGHT - WEIGHT
DURABLE



CHEAP
CONVENIENT

EASILY SHAPED +
COLORED



SOCIAL +
ENVIRONMENTAL
INJUSTICES

HUMAN HEALTH
CONSEQUENCES



PLASTICIZED
PLANET



ENVIRONMENTAL
DEGRADATION

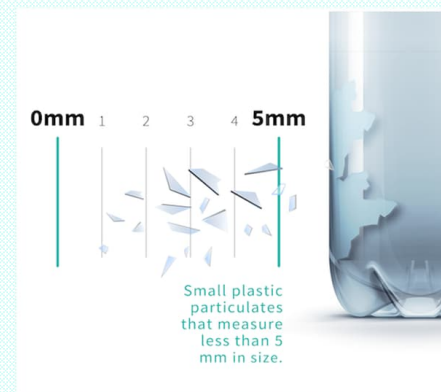
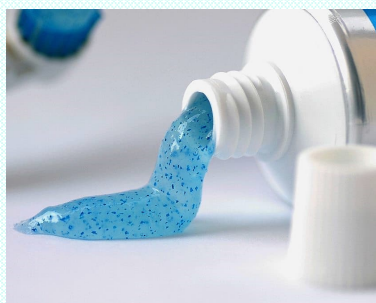
UNKNOWNNS

MICROPLASTICS

- MPs measure **less than 5mm** in size
- hard to detect and easy for wildlife to mistake for natural prey
- some not visible to naked eye = human impacts

PRIMARY MPS

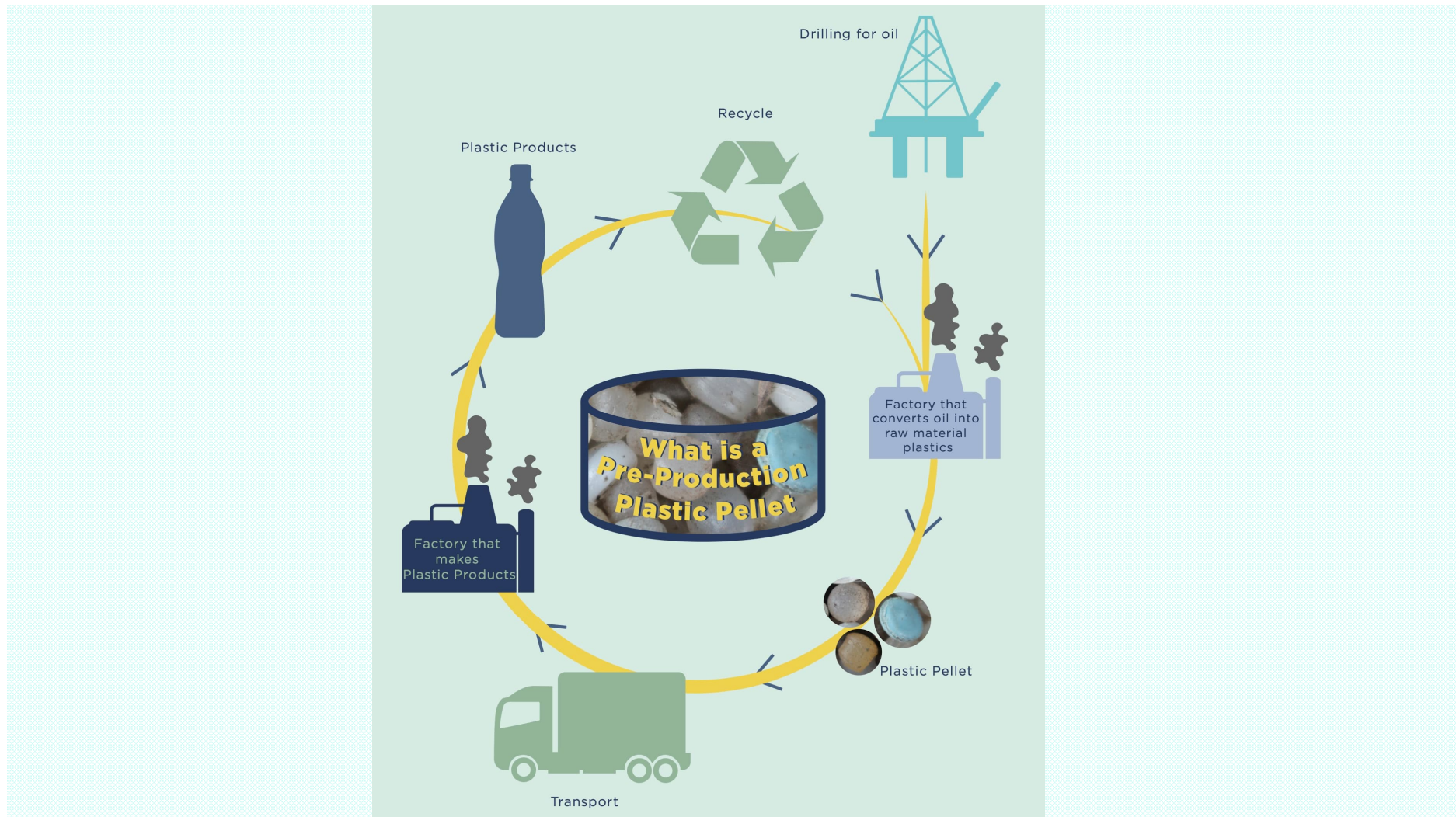
intentionally created to be less than 5mm



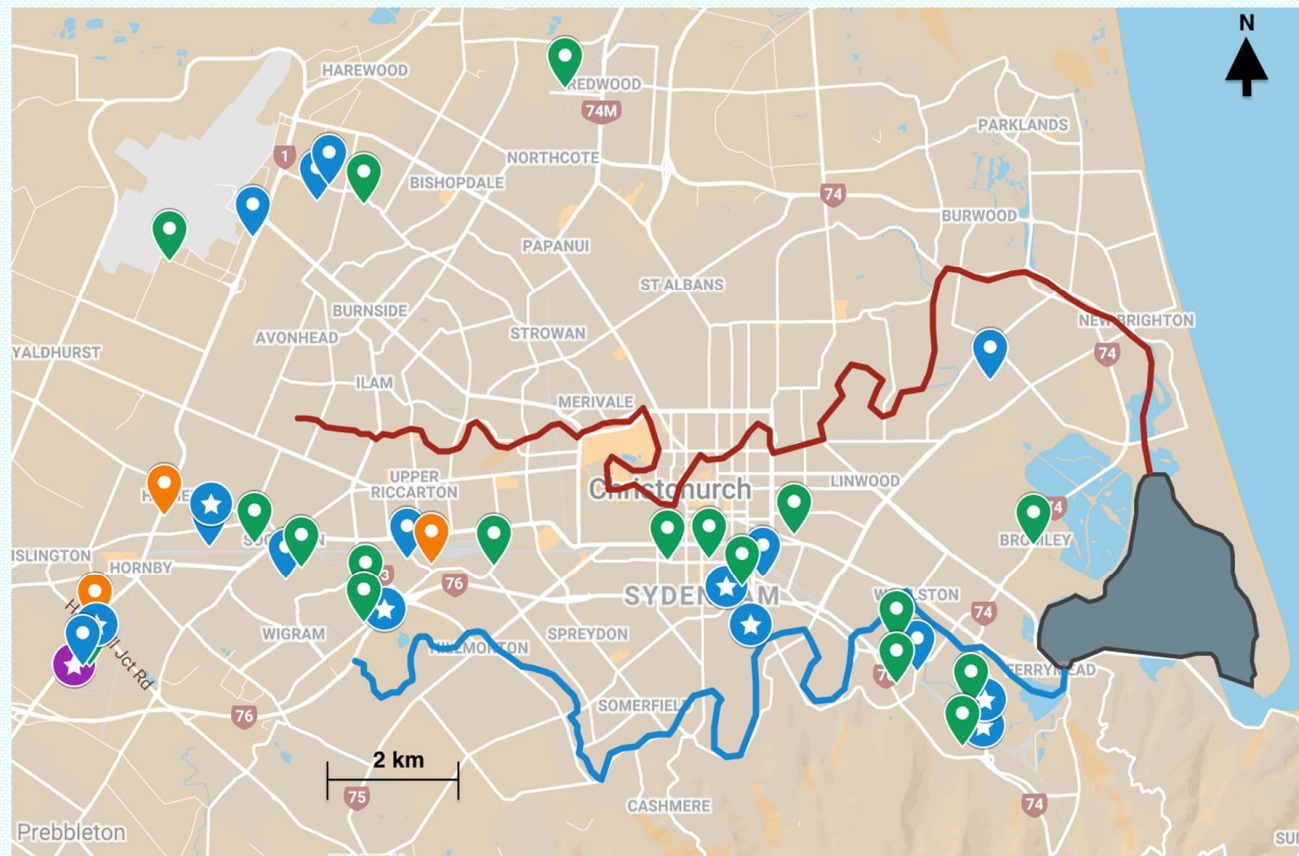
SECONDARY MPS

impacted by the **sun, wind and waves**

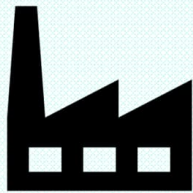




Plastics Industry in Ōtautahi/Christchurch

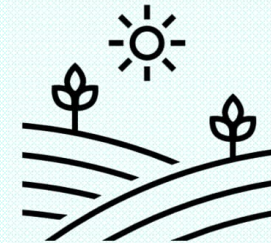


TRACEABLE



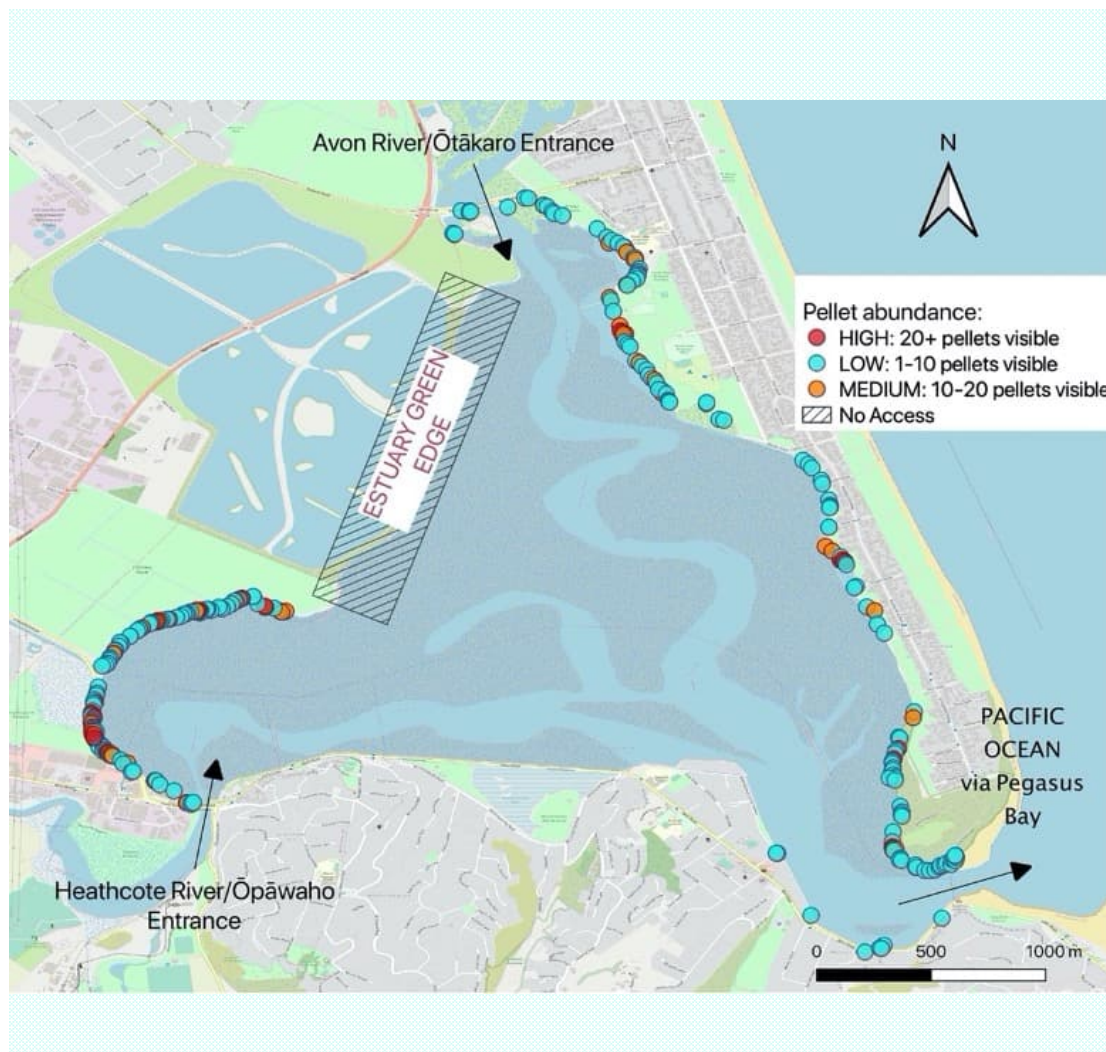
WHY ?

PROTECT



IMPACT





Rapid Estuary Assessment

- Scope estuary perimeter
- Snapshot of accumulation hotspots
- 25x25cm quadrat
LOW: 5-10 pellets
MEDIUM: 10-20
HIGH: 20+





HOTSPOTS

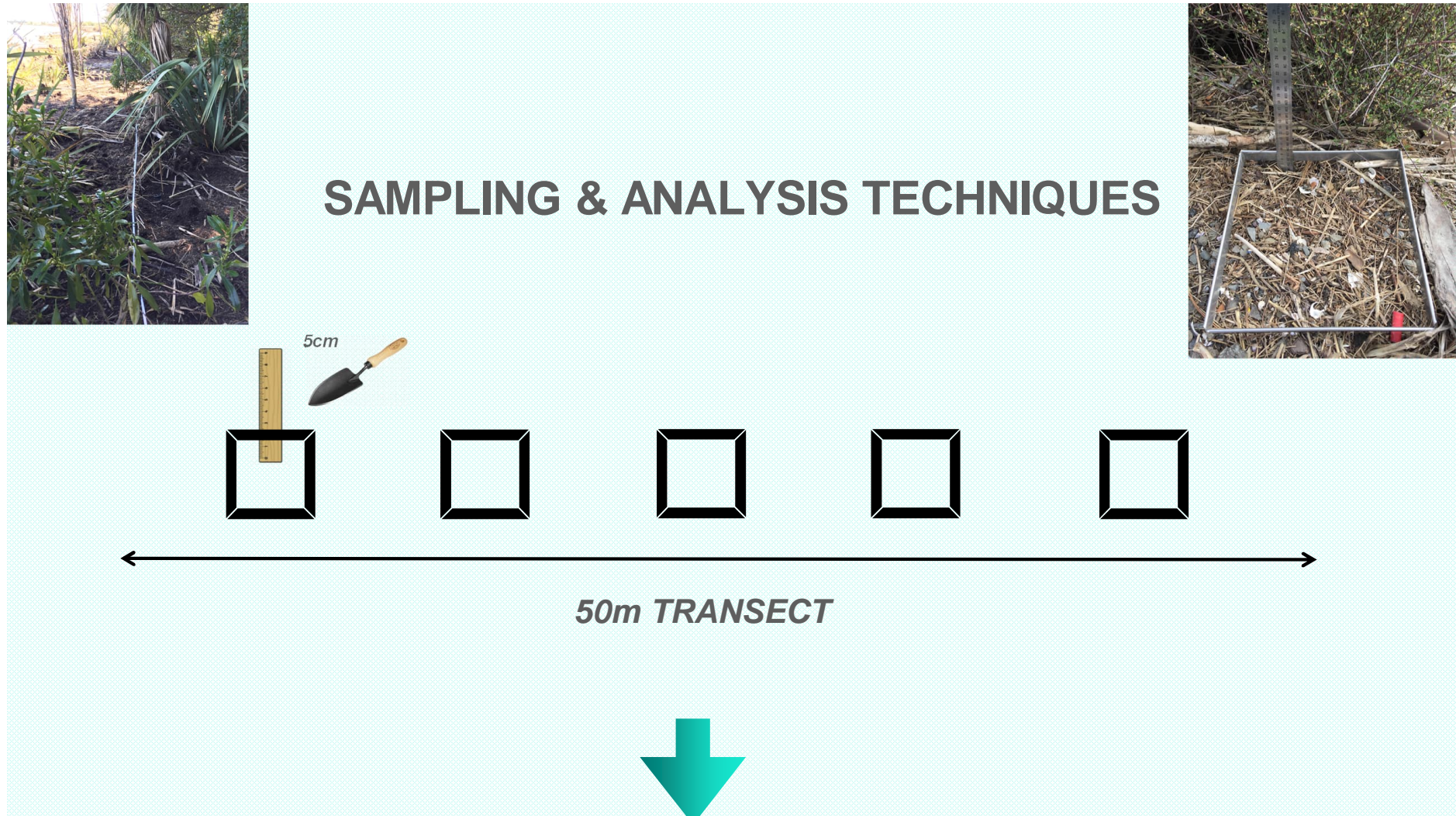
1. Ferrymead Bridge
2. Humphreys Drive
3. Sandy Point
4. Bridge Street
5. South New Brighton Park
6. Penguin Street
7. Southshore Spit

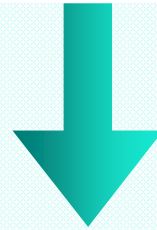
SW

EAST

SE







AT HOME ANALYSIS:

Number #

Size

Shape

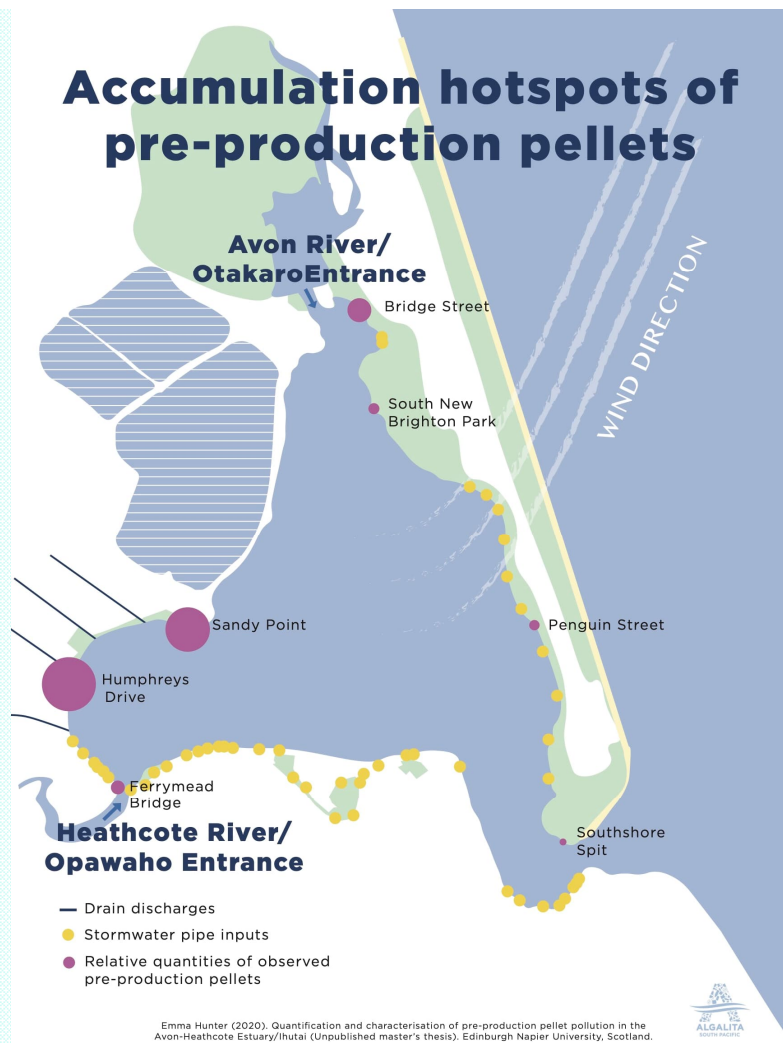
Colour

Weathering

*Polymer type (out sourced to
ESR)*



Accumulation hotspots of pre-production pellets

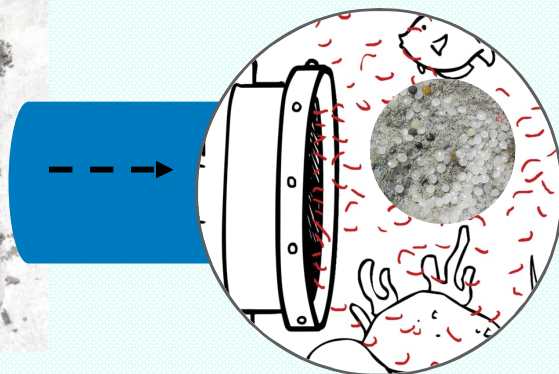


- 3819 pellets across 7 sites, 35 samples
- Bridge Street abundance higher than FB, SS, PS
- High variance within sites
- Downwind accumulation
- Proximity to river outlets, stormwater pipes, drain outlets

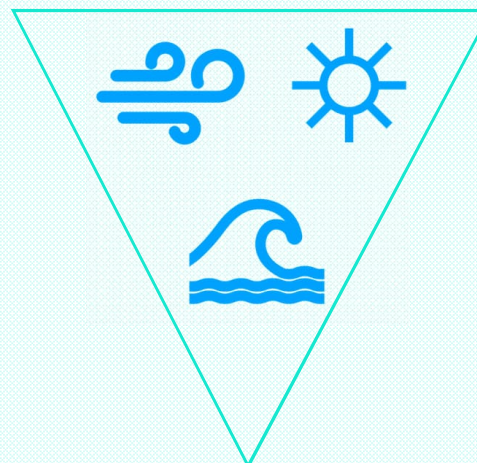
HOW DID THE PELLETS GET TO THE ESTUARY?



DRAINS

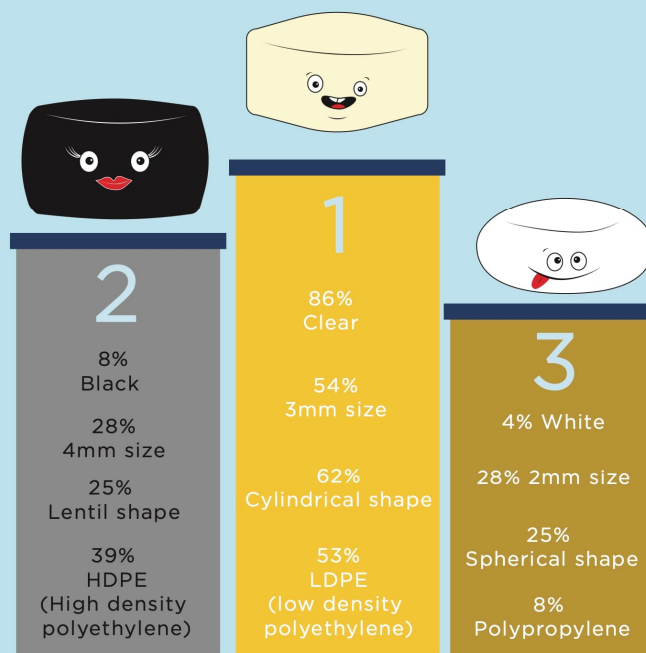


THE ELEMENTS



TRANSPORT





In this study, the most frequently identified characteristics of pre-production pellets in the Avon-Heathcote Estuary/Ihutai were clear, cylindrical, 3mm size and made of LDPE (low density polyethylene).

Possible products these types of pellets can be made into are plastic bags, protective sheeting, industrial pipes, cling film, plastic packaging, bottles, toys to name a few!

Emma Hunter (2020). Quantification and characterisation of pre-production pellet pollution in the Avon-Heathcote Estuary/Ihutai (Unpublished master's thesis). Edinburgh Napier University, Scotland.



Clear
3mm size
Cylindrical
Polyethylene
"2" Weathering



Types of Plastic

Polyethylene terephthalate



High density Polyethylene



Polyvinyl chloride



Low density Polyethylene

"The most frequent pre-production pellet polymer type observed in the Avon-Heathcote Estuary/Ihutai was LDPE (low density polyethylene) (53.1%)"



Polypropylene



Polystyrene



Other



Emma Hunter (2020). Quantification and characterisation of pre-production pellet pollution in the Avon-Heathcote Estuary/Ihutai (Unpublished master's thesis). Edinburgh Napier University, Scotland.



FOR EXAMPLE:

flexible packaging, protective sheeting, industrial pipes, long-life carriers bags, thinner gauged carrier bags, food wraps etc.



Solutions

Prevent pellet loss

through improved handling and adoption of best management practices by the plastics industry. For example, minimising pellet loss at truck loading or unloading. Operation Clean Sweep® has great guidelines for businesses to follow.



Use less plastic in general:

as the feedstock for plastic items, less demand for plastic = less pellets. Get creative with alternatives to everyday plastic items and support businesses that are doing the same.

Stop pellets travelling down stormwater drains and into the freshwater environment.

Sieve like designs such as LittaTrap™ can capture pellets before they make their way into nature.

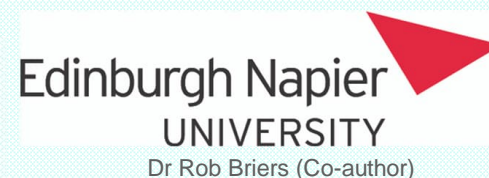


Build awareness of the problem,
let's get talking about plastic pollution!

Emma Hunter (2020). Quantification and characterisation of pre-production pellet pollution in the




Gratitude and thanks to:





Programme Coordinator,
Ōtautahi/Christchurch
emma@sustainablecoastlines.org





sustainable
coastlines

AT A GLANCE

REGISTERED CHARITY SINCE 2009

Sustainable Coastlines Charitable Trust is a New Zealand charity that operates nationwide, with 21 FTE employees in Auckland, Wellington and Nelson.

BASED IN AUCKLAND, NEW ZEALAND

The Flagship Education Centre
55 Madden Street, Auckland Central, Auckland 1010,
New Zealand. Email info@sustainablecoastlines.org

EXTRAS FOR EXPERTS

GST Number 104972904
NZBN 9429043208821
Charity Number CC46615

Who we are.

SHARED VISION

Restored mauri for our moana.


OUR PURPOSE

Connect people with nature
and inspire change.

OUR MISSION

Support communities to prevent
litter and restore waterways.


SHARED OUTCOMES



Beautiful Beaches

Healthy Waters

Inspired People



sustainable
coastlines

AT A GLANCE

Clean-ups
AND 'DIY' SUPPORTED EVENTS

Riparian planting
AND FRESHWATER RESTORATION

Schools education
AND TEACHER TRAINING WORKSHOPS

Public awareness
MEDIA CAMPAIGNS

Citizen science
ENVIRONMENTAL MONITORING

What we do.


Established in April 2009, the Sustainable Coastlines Charitable Trust is a multi award-winning New Zealand charity that exists to connect people to nature and inspire change.

Our long-term vision is for restored mauri for our moana and our mission is to support communities around Aotearoa to prevent litter and restore waterways. The key outcomes we strive for are beautiful beaches /oneone kōrekoreko, healthy waters /waiora and inspired people /tāngata whakaohoho. With the scale of this vision and these outcomes, we cannot achieve this work alone.

We deliver and support large-scale clean-up events, educational programmes, public awareness campaigns, catchment-based freshwater restoration and citizen science environmental monitoring activities. We also enable others by supporting 'Do It Yourself' efforts nationwide.


Sustainable Coastlines is strictly apolitical and focuses on solutions for people of all ages, backgrounds and sectors. We create open-access programmes, tools, data and resources to equip communities to look after their local environment.

We deliver on our mission and vision through our three core grassroots community programmes:




LOVE YOUR COAST

Clean-ups, education and outreach to reduce waste, prevent litter and avoid single-use plastics.



LOVE YOUR WATER

Community-based restoration activities (including riparian planting, weeding and maintenance) and education to improve the health of our freshwater ecosystems.



LITTER INTELLIGENCE

Training and support for schools and community groups to become 'citizen scientists' for our national litter monitoring programme, providing rigorous data to inform actions to solve the litter problem.

