

Waihoru
Spreydon-Cashmere Community Board
MINUTES ATTACHMENTS

Date: Tuesday 1 June 2021
Time: 5.02pm
Venue: Te Pokai, Cashmere Primary School,
135 Hackthorne Road, Cashmere

TABLE OF CONTENTS	PAGE
5.2 Simon Kingham – Innovating Streets – Beckenham Loop – Slow Traffic Neighbourhood Improvements	
A. Deputation - Simon Kingham - Innovating Streets – Beckenham Loop – Slow Traffic Neighbourhood Improvements.....	3
5.5 Beckenham Neighbourhood Association – Innovating Streets – Beckenham Loop – Slow Traffic Neighbourhood Improvements	
A. Deputation - Beckenham Neighbourhood Association - Innovating Streets - Beckenham Loop - Slow Traffic Neighbourhood Improvements	17
5.4 David Ivory – Innovating Streets – Selwyn Street – Safer Routes to School Improvements (Brougham Street to Somerfield Street)	
A. Deputation - David Ivory - Innovating Streets – Selwyn Street – Safer Routes to School Improvements (Brougham Street to Somerfield Street)	21
5.3 Graeme Watson – Innovating Streets – Selwyn Street – Safer Routes to School Improvements (Brougham Street to Somerfield Street)	
A. Deputation - Graeme Watson - Innovating Streets – Selwyn Street – Safer Routes to School Improvements (Brougham Street to Somerfield Street)	34

Simon Kingham

Presentation to Spreydon-Heathcote Community Board
June 1st 2021

About me

Resident of Beckenham

- But also.....Concerned citizen of NZ, father, husband etc

and

- **Kaitohutohu Matua Pūtaiao | Chief Science Advisor**
- Te Manatū Waka | Ministry of Transport
- Te Whanga-nui-a-Tara | Wellington

- **Ahorangi, | Professor**
- Te Whare Wānanga o Waitaha | University of Canterbury
- Ōtautahi | Christchurch

In NZ

- Transport is responsible for 47 % of CO2 emissions
 - Per capita 4 x India and China
- Ministry of Transport's '*Hīkina te Kohupara – Kia mauri ora ai te iwi* - Transport Emissions: Pathways to Net Zero by 2050'
 - *Lifting of the toxic mist: And behold the breath of life.*
 - <https://www.transport.govt.nz/consultations/hikina-te-kohupara-discussion/>

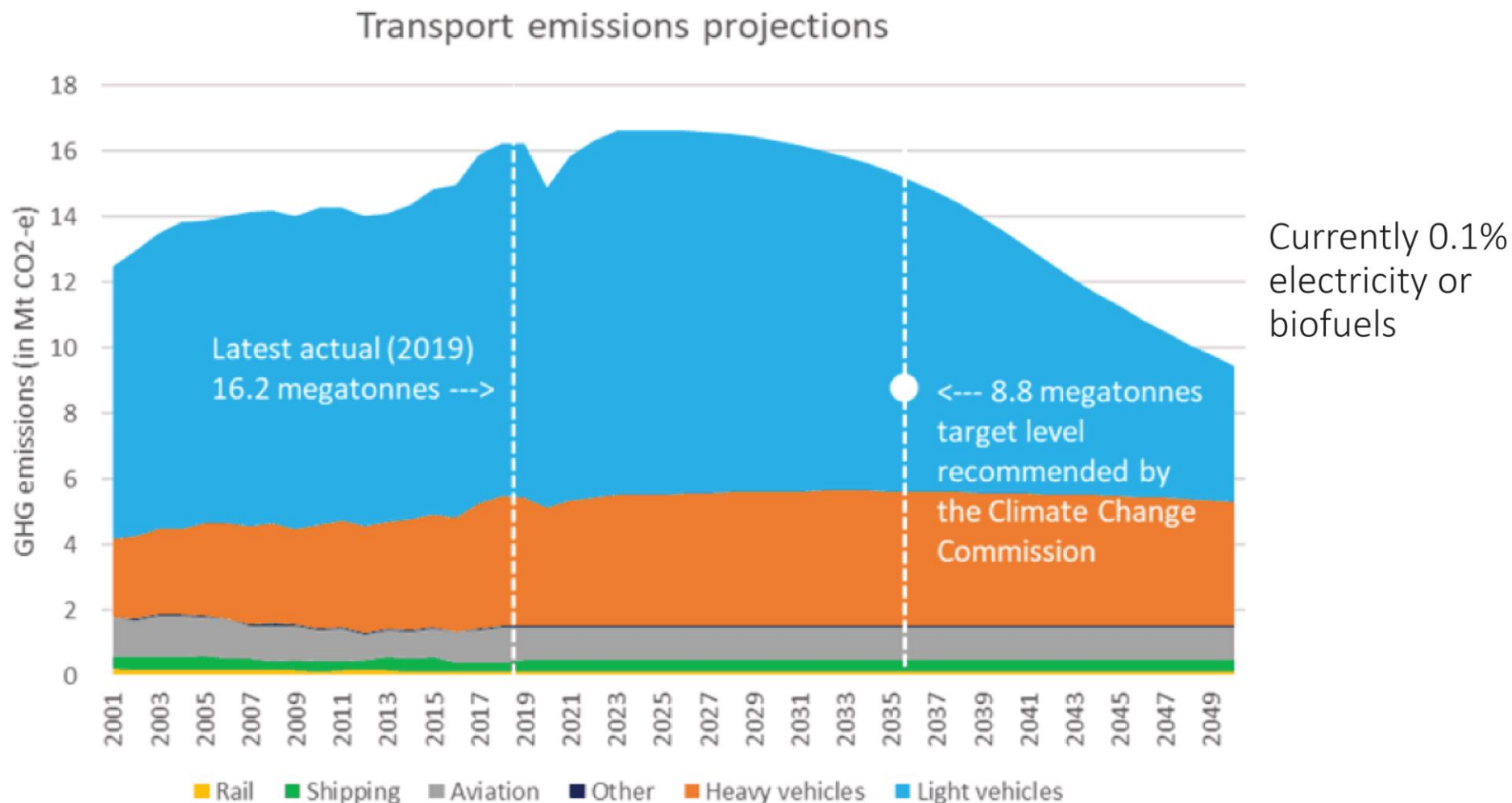
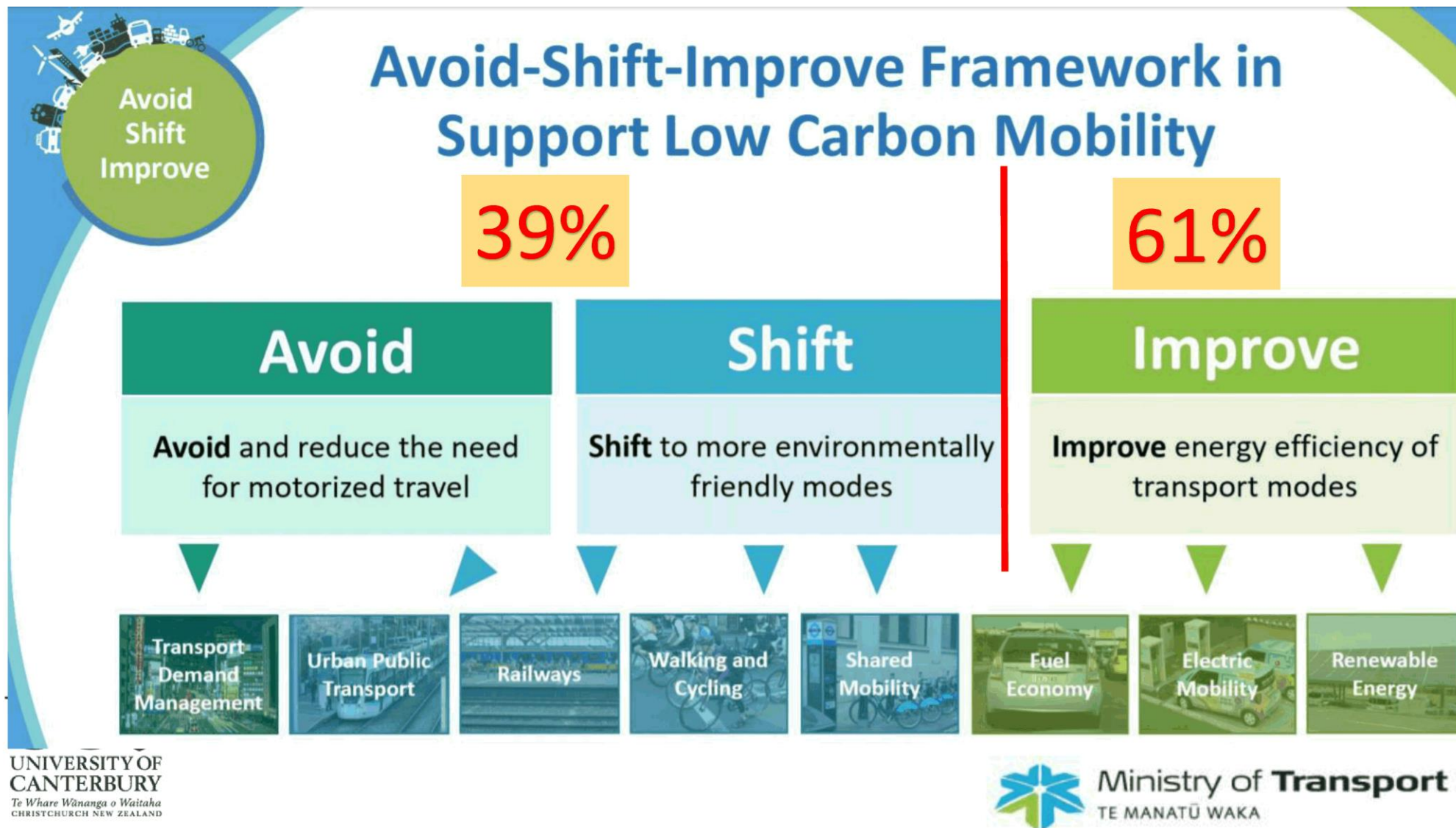


Figure 2. New Zealand's forecasted transport CO₂ emissions by vehicle type



Avoid and Shift

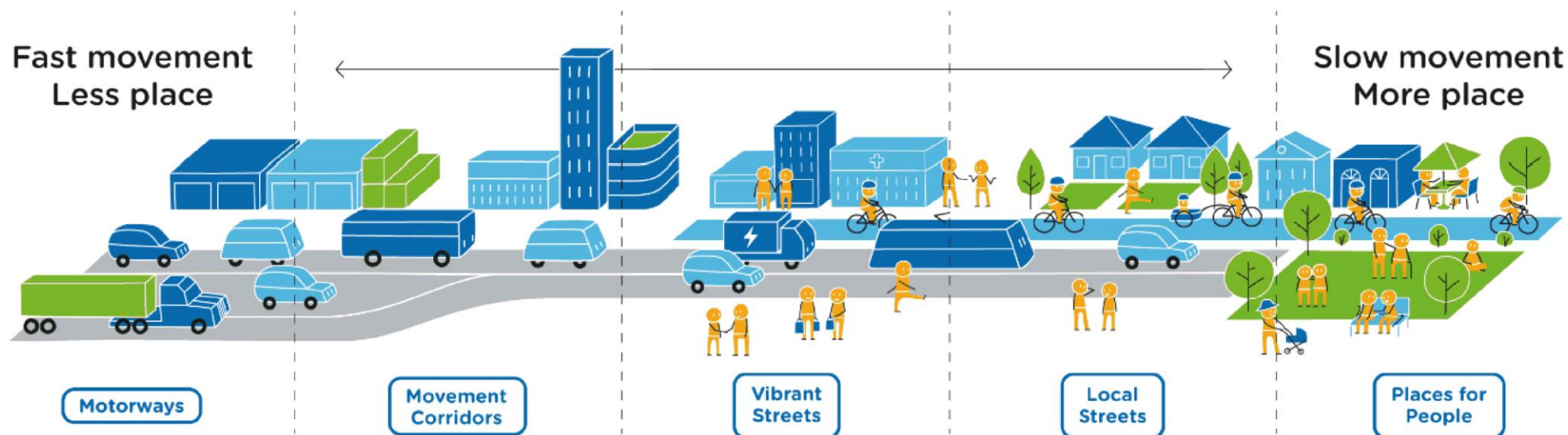


Figure 7. Movement and Place Framework

<https://www.transport.govt.nz/consultations/hikina-te-kohupara-discussion/>



Key points

- We can **design and manage our streets to be more inclusive of different people and to encourage travel by active modes** and public transport. This includes applying **multi-modal street layouts, lower speed limits, tactical street changes**, and universal design principles. We can also discourage single-occupant vehicle trips through measures such as **traffic calming** and parking management.

- Hīkina te Kohupara – Kia mauri ora ai te iwi, p 35

How

Rod Carr, Chair Climate Change Commission, Jan 2021

- *“the government must take **immediate and decisive action** if it wants to avert the worst ravages of climate change”*
- *“But the government must move faster – and support business, agriculture and **community** to do the same.”*

<https://www.theguardian.com/world/2021/jan/31/new-zealand-needs-urgent-action-to-cut-emissions-says-climate-change-commission>

How

Michael Wood, Minister of Transport

- *“There will be some **hard choices** to make, but it’s obvious we can’t continue with business as usual.”*

<https://www.beehive.govt.nz/release/govt-rev-reductions-transport-emissions>

Waipā District Council urged to endure public 'bike-lash' to cycling initiative in Cambridge

Lawrence Gullery · 16:32, May 21 2021



Sarah Ulmer

- *“community resistance was a normal part of the course for change”*
- *“I understand people don’t like change but you guys are in charge of the future of our town and you are making decisions on how our town will function in the future.*
- *“Do you want our towns to be overrun with traffic or do you want it to be a wicked place to live and a safe place for everyone to move around?”*

<https://www.stuff.co.nz/national/health/125167452/waip-district-council-urged-to-endure-public-bikelash-to-cycling-initiative-in-cambridge>

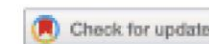
Cycleway fears fanned by stress of change: expert

Ewan Sargent · 10:15, Mar 28 2018



MOBILITIES, 2017
<https://doi.org/10.1080/17450101.2017.1408950>

 **routledge**
Taylor & Francis Group



Beyond 'bikelash': engaging with community opposition to cycle lanes

Kirsty Wild^a , Alistair Woodward^a , Adrian Field^b and Alex Macmillan^c 

<https://www.stuff.co.nz/life-style/well-good/inspire-me/102454365/cycleway-fears-fanned-by-stress-of-change-expert>

<https://doi.org/10.1080/17450101.2017.1408950>

Canterbury

- *'It's time, Canterbury'* campaign launched on Friday
- www.itstimecanterbury.co.nz



It's time Canterbury

Environment Canterbury (ECan) youth rōpū representative Erana Riddell

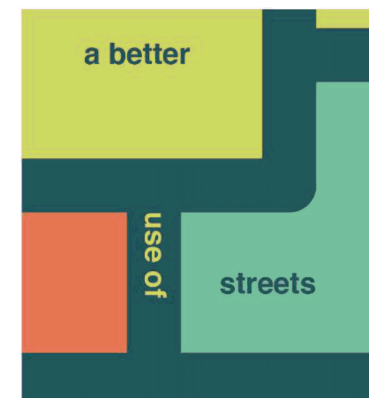
- *“there was hope, but there needed to be commitment from both the **community** and its **leaders**”*

<https://www.stuff.co.nz/environment/climate-news/125276365/doing-nothing-isnt-an-option-cataclysmic-climate-change-projections-spark-action>

Thanks for listening

Better Beckenham project: final steps

Dave Kelly
Chair, Beckenham Neighbourhood
Association
1 June 2021



Thanks to
Friday Creative



Innovative Streets projects (NZTA)

- Called for temporary and unorthodox proposals
- Goals: safer streets, better communities
- But no mechanism, safety important
- Put council staff NZ-wide under pressure: caught between community aspirations and engineering guidelines
- Projects delayed, funding not

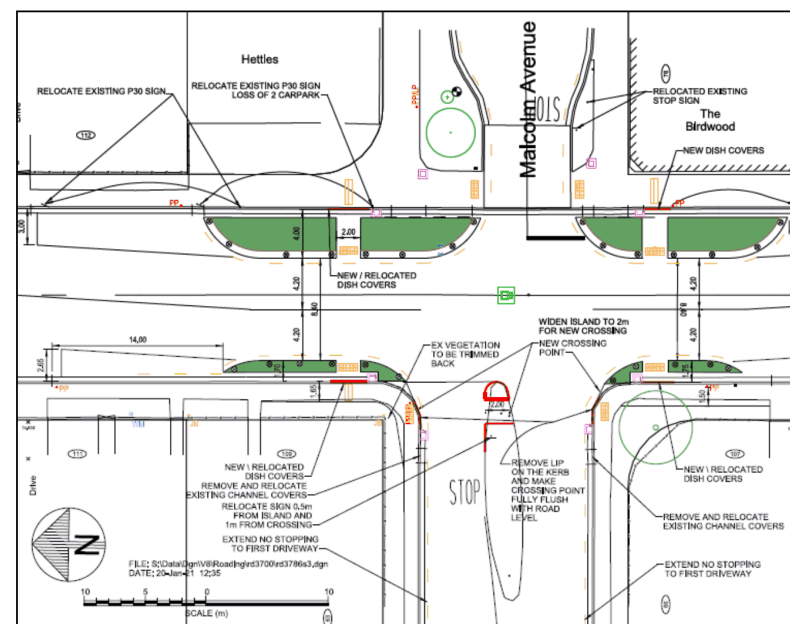


Four elements

- Speed limit reduction to 40 km/h in the Loop
- Intersection treatment at Fisher/Norwood
- Kea crossing on Beckenham St
- Buildouts/shorter crossing points on Birdwood Ave
 - delayed, but important
 - help the Birdwood environment match the 40 km/h limit



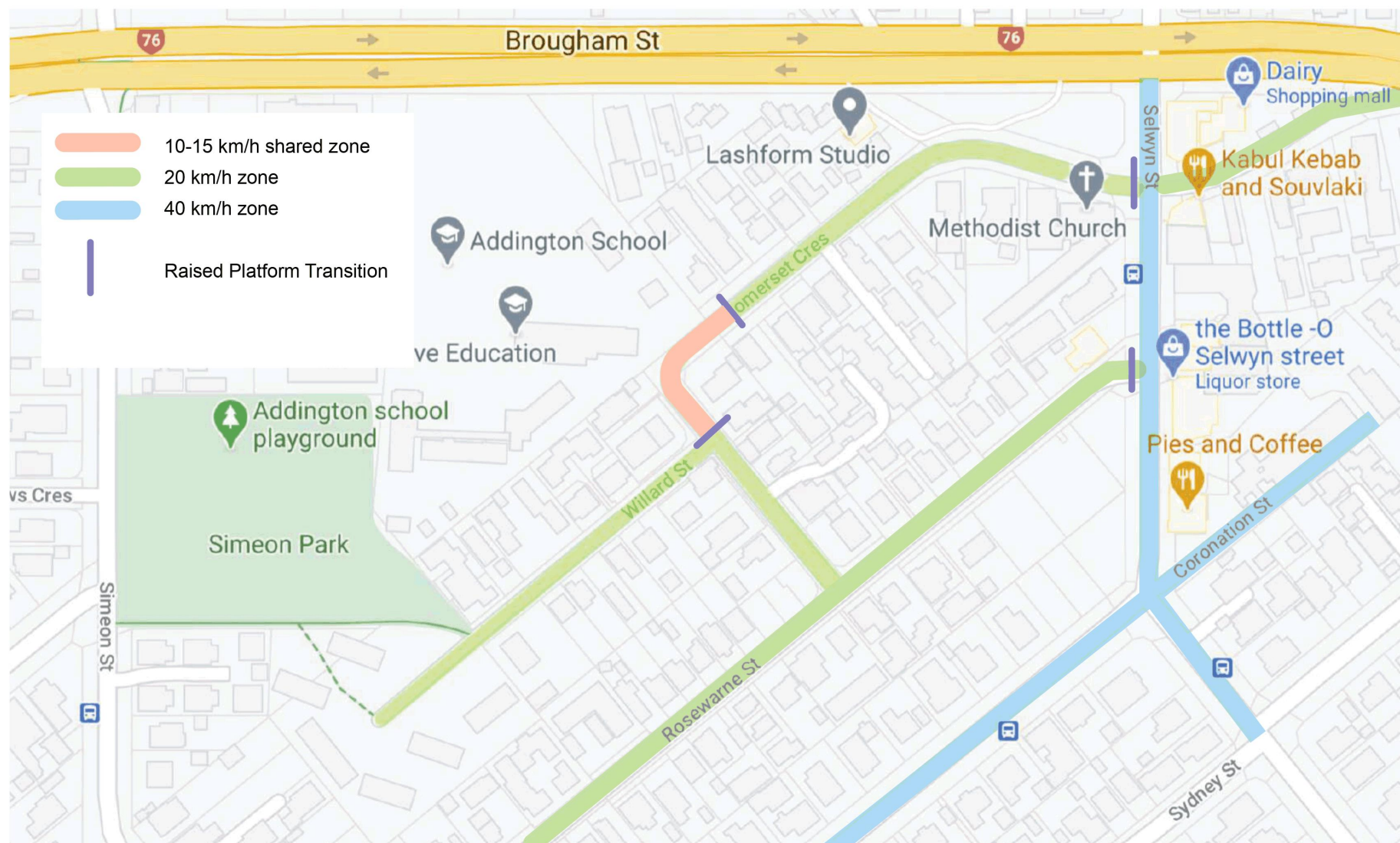
Getting something on the ground



Money spent by 30 June is 90% from NZTA, in July-Aug likely only 51%

Several plans drawn, simplest one could go on with minor modifications (and it's temporary)

How the Community Board could help: streamline approval process, if necessary cover small shortfall on spending after 30 June





Rosewarne Street - Raised Entry Platform
needs better road marking



Sommerset Crescent outside school

Better road markings - but 20km/h should be 10km/h for a shared space. Most people slow down here to less than 20km/h so make it mandatory





Sommerset Crescent & Selwyn Street

The wide road entry encourages high speed turns. The road is wider than it needs to be . Drop kerbs face street and not the crossing. Make it easier for pedestrians to cross

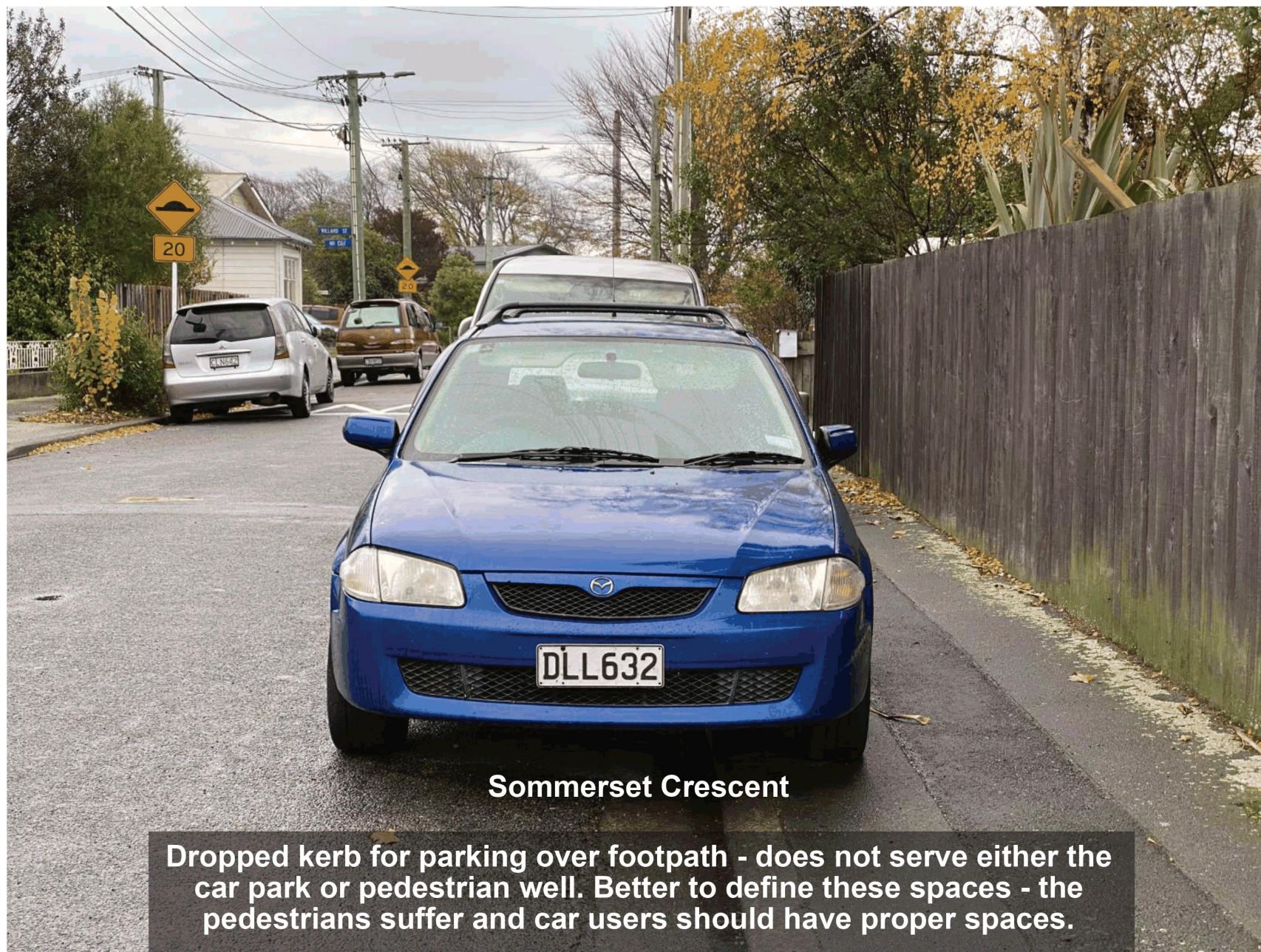




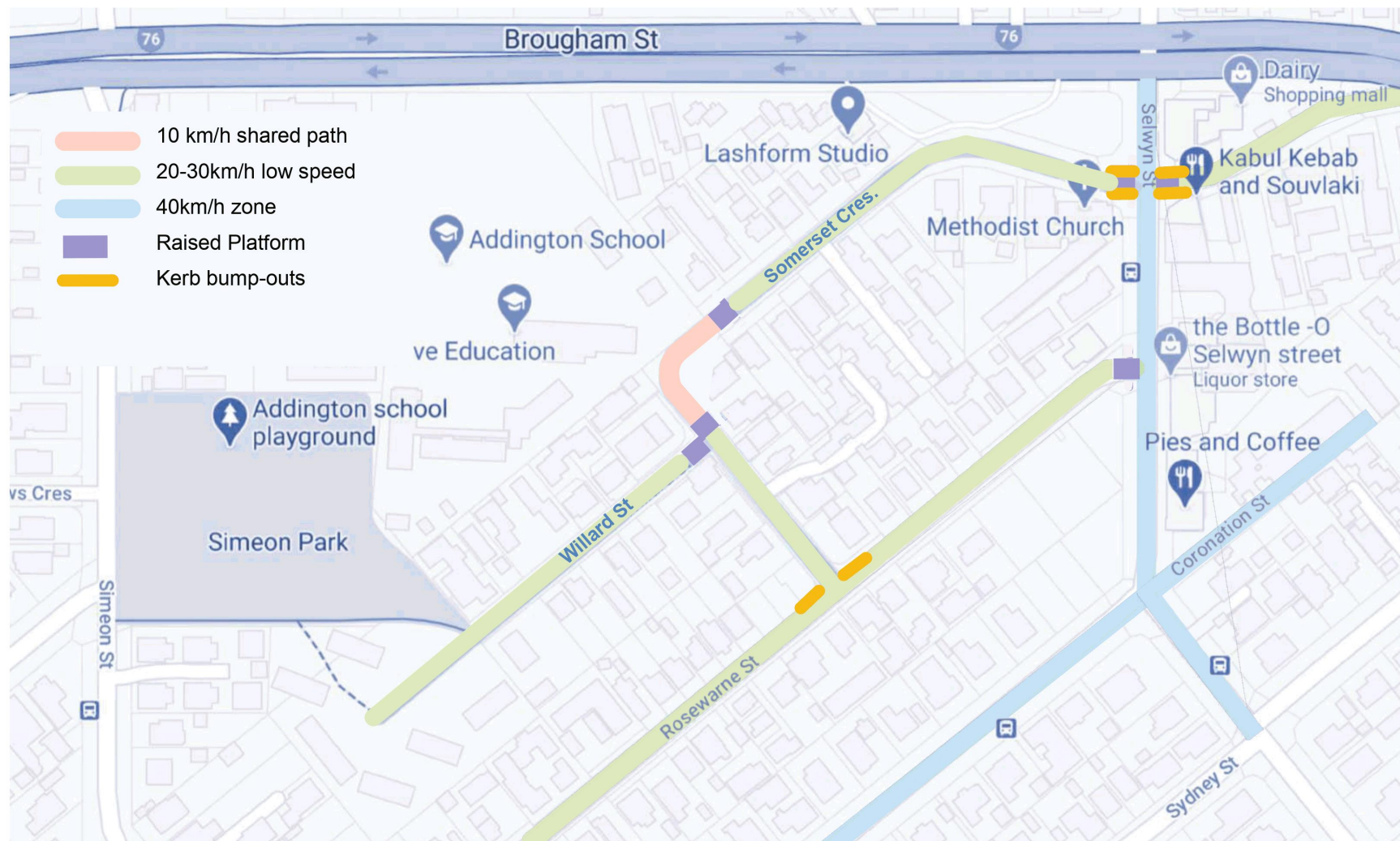












P1010636.jpg

31/05/21, 8:01 PM



Attachment A Item 5.3

about:blank

Page 1 of 1