

**Waipapa
Papanui-Innes Community Board
AGENDA**

Notice of Meeting:

An ordinary meeting of the Waipapa/Papanui-Innes Community Board will be held on:

Date: Friday 7 May 2021
Time: 9am
Venue: Board Room, Papanui Service Centre,
Corner Langdons Road and Restell Street, Papanui

Membership

Chairperson	Emma Norrish
Deputy Chairperson	Simon Britten
Members	Pauline Cotter
	Mike Davidson
	Ali Jones
	Emma Twaddell

30 April 2021

Elizabeth Hovell
Manager Community Governance, Papanui-Innes
941 8637
Elizabeth.Hovell@ccc.govt.nz
www.ccc.govt.nz

Note: The reports contained within this agenda are for consideration and should not be construed as Council policy unless and until adopted. If you require further information relating to any reports, please contact the person named on the report.

To view copies of Agendas and Minutes, visit:

<https://www.ccc.govt.nz/the-council/meetings-agendas-and-minutes/>



Developing Resilience in the 21st Century

Strategic Framework

Whiria ngā whenu o ngā papa,
honoa ki te maurua tāuiki

Bind together the strands of each mat and join
together with the seams of respect and reciprocity

Ōtautahi-Christchurch is a city of opportunity for all

Open to new ideas, new people and new ways of doing things – a city where anything is possible

Principles

Being open,
transparent and
democratically
accountable

Promoting
equity, valuing
diversity and
fostering inclusion

Taking an inter-generational approach
to sustainable development,
prioritising the social, economic
and cultural wellbeing of
people and communities
and the quality of the
environment, now
and into the
future

Building on the
relationship with
Te Rūnanga o Ngāi Tahu
and the Te Hononga-Council
Papatipu Rūnanga partnership,
reflecting mutual understanding
and respect

Actively collaborating and
co-operating with other
local, regional
and national
organisations

Ensuring
the diversity
and interests of
our communities
across the city and the
district are reflected in
decision-making

Community Outcomes

Resilient communities

Strong sense of community
Active participation in civic life
Safe and healthy communities
Celebration of our identity
through arts, culture, heritage,
sport and recreation
Valuing the voices of all cultures
and ages (including children)

Liveable city

Vibrant and thriving city centre
Sustainable suburban and
rural centres
A well connected and accessible
city promoting active and
public transport
Sufficient supply of, and
access to, a range of housing
21st century garden city
we are proud to live in

Healthy environment

Healthy water bodies
High quality drinking water
Unique landscapes and
indigenous biodiversity are
valued and stewardship
exercised
Sustainable use of resources
and minimising waste

Prosperous economy

Great place for people, business
and investment
An inclusive, equitable economy
with broad-based prosperity
for all
A productive, adaptive and
resilient economic base
Modern and robust city
infrastructure and community
facilities

Strategic Priorities

Enabling active
and connected
communities
to own their future

Meeting the challenge
of climate change
through every means
available

Ensuring a high quality
drinking water supply
that is safe and
sustainable

Accelerating the
momentum
the city needs

Ensuring rates are
affordable and
sustainable

Ensuring we get core business done while delivering on our Strategic Priorities and achieving our Community Outcomes

Engagement with
the community and
partners

Strategies, Plans and
Partnerships

Long Term Plan
and Annual Plan

Our service delivery
approach

Monitoring and
reporting on our
progress

Mihi



Tēnā koutou

Kua hui mai nei

Ki tēnei whare ō tātou

Ki te kōrero, ki te whakarongo

i nga kaupapa ō to hapori

Nau mai, haere mai.

Nā reira tēnā koutou katoa

Greetings

to all who have gathered

within our (communal) house

to speak and to listen to the

topics/conversations of your community

Welcome, welcome

Therefore, again I greet all present

Part A	Matters Requiring a Council Decision
Part B	Reports for Information
Part C	Decisions Under Delegation

TABLE OF CONTENTS

C	1.	Apologies / Ngā Whakapāha.....	5
B	2.	Declarations of Interest / Ngā Whakapuaki Aronga	5
C	3.	Confirmation of Previous Minutes / Te Whakaāe o te hui o mua	5
B	4.	Public Forum / Te Huinga Whānui.....	5
B	5.	Deputations by Appointment / Ngā Huinga Whakaritenga	5
B	6.	Presentation of Petitions / Ngā Pākikitanga.....	5
B	7.	Correspondence	25

STAFF REPORTS

C	8.	Proposed renaming of Styx River Reserve No.2 and Kaputone Esplanade Reserve	31
C	9.	English Park - Ground Lease to Environment Canterbury	39
C	10.	Waipapa/Papanui-Innes Community Board 2020-21 Discretionary Response Fund - Papanui Primary School.....	49
C	11.	Waipapa/Papanui-Innes Community Board 2020-21 Discretionary Response Fund Application - Community Focus Trust.....	53
C	12.	Waipapa/Papanui-Innes Community Board 2020-21 Discretionary Response Fund Application - Te Ora Hou	57

PAPANUI-INNES COMMUNITY BOARD SUBMISSIONS COMMITTEE

C	13.	Papanui-Innes Community Board Submissions Committee Minutes - 17 March 2021	61
B	14.	Elected Members' Information Exchange / Te Whakawhiti Whakaaro o Te Kāhui Amorangi.....	67

1. Apologies / Ngā Whakapāha

At the close of the agenda no apologies had been received.

2. Declarations of Interest / Ngā Whakapuaki Aronga

Members are reminded of the need to be vigilant and to stand aside from decision making when a conflict arises between their role as an elected representative and any private or other external interest they might have.

3. Confirmation of Previous Minutes / Te Whakaāe o te hui o mua

That the minutes of the Waipapa/Papanui-Innes Community Board meeting held on [Friday, 16 April 2021](#) be confirmed (refer page 7).

4. Public Forum / Te Huinga Whānui

A period of up to 30 minutes will be available for people to speak for up to five minutes on any issue that is not the subject of a separate hearings process.

5. Deputations by Appointment / Ngā Huinga Whakaritenga

Deputations may be heard on a matter or matters covered by a report on this agenda and approved by the Chairperson.

There were no deputations by appointment at the time the agenda was prepared.

6. Presentation of Petitions / Ngā Pākikitanga

There were no petitions received at the time the agenda was prepared.

Waipapa/Papanui-Innes Community Board OPEN MINUTES

Date: Friday 16 April 2021
Time: 9am
Venue: Board Room, Papanui Service Centre,
Corner Langdons Road and Restell Street, Papanui

Present

Chairperson	Emma Norrish
Deputy Chairperson	Simon Britten
Members	Pauline Cotter
	Mike Davidson
	Emma Twaddell

16 April 2021

Elizabeth Hovell
Manager Community Governance, Papanui-Innes
941 8637
Elizabeth.Hovell@ccc.govt.nz
www.ccc.govt.nz

To view copies of Agendas and Minutes, visit:
www.ccc.govt.nz/the-council/meetings-agendas-and-minutes/

Part A Matters Requiring a Council Decision

Part B Reports for Information

Part C Decisions Under Delegation

The agenda was dealt with in the following order.

1. Apologies / Ngā Whakapāha

Part C

Community Board Resolved PICB/2021/00026

That the apology from Ali Jones for absence be received.

Simon Britten/Emma Twaddell

Carried

2. Declarations of Interest / Ngā Whakapuaki Aronga

Part B

Emma Twaddell declared an interest in Items 12 and 13 – Discretionary Response Fund Applications – St Albans Residents’ Association and took no part in the Board’s discussion or voting on these items.

3. Confirmation of Previous Minutes / Te Whakaāe o te hui o mua

Part C

Community Board Resolved PICB/2021/00027

That the minutes of the Waipapa/Papanui-Innes Community Board meeting held on Wednesday, 17 March 2021 be confirmed subject to the following additions:

- Add a note to Public Forum item 4.3 mentioning “the proposed “skip day” to be held at 10 Shirley Road.
- Add a notation that the Board will add the remediation of the Belfast netball courts and public toilet facilities to the list of projects that the Board will be advocating to bring forward in the 2021-31 Long Term Plan submission.

Simon Britten/Emma Twaddell

Carried

4. Public Forum / Te Huinga Whānui

Part B

4.1 Cranford/Innes Intersection Safety Concerns

Margaret Holland did not attend the meeting.

4.2 Flockton Street Increase in Traffic Volumes

Jo Scott, local resident, addressed the Board regarding the increase in traffic volumes and speeds on Flockton Street in light of the traffic calming measures currently being trialled to reduce rat-running in the area following the opening of the Christchurch Northern Corridor.

Ms Scott requested that Traffic Planning staff meet with residents regarding the results of the trials.

The Chairperson informed Ms Scott that the Board have been briefed on the impact of the traffic calming trials and the trials are going to be withdrawn immediately.

After questions from members, the Chairperson thanked Ms Scott for her presentation.

Attachments

- A Public Forum Presentation re Flockton Street - Jo Scott

5. Deputations by Appointment / Ngā Huinga Whakaritenga

Part B

There were no deputations by appointment.

6. Presentation of Petitions / Ngā Pākikitanga

Part B

There was no presentation of petitions.

7. Notice of Motion

Community Board Resolved PICB/2021/00028

Notice of Motion accepted without change

Part C

That the Waipapa/Papanui-Innes Community Board:

1. Requests a report with advice to enable the Board to consider revoking the name 'Gulati Lane' (518 Hills Road, RMA/2018/2032) and adopting a replacement name.

Pauline Cotter/Simon Britten

Carried

Cr Mike Davidson requested that his vote against the resolution be recorded.

8. Correspondence

Community Board Resolved PICB/2021/00029

Officer Recommendation accepted without change

Part B

That the Papanui-Innes Community Board:

1. Receives the information in the Correspondence Report dated 16 April 2021 regarding the letter from the Ministry of Social Development in response to the Board's concerns about funding for local community organisations.

Emma Norrish/Emma Twaddell

Carried

9. Briefings

Community Board Comment

Part B

The Council's Community Travel Advisor and students from St Albans School, briefed the Board about the St Albans School Innovating Streets Project.

The Chairperson thanked St Albans School students and the Council Senior Planner for their presentation.

Attachments

- A Innovating Streets for People St Albans School Project

10. Waipapa/Papanui-Innes Community Board 2020-21 Discretionary Response Fund Application - Papanui Youth Development Trust

Community Board Resolved PICB/2021/00030

Officer Recommendation accepted without change

Part C

That the Waipapa/Papanui-Innes Community Board:

1. Approves a grant of \$8,000 from its 2020-21 Discretionary Response Fund to Papanui Youth Development Trust towards increasing their Administration Support.

Mike Davidson/Emma Norrish

Carried

11. Waipapa/Papanui-Innes Community Board 2020-21 Discretionary Response Fund Application - Morrison Avenue Bowling Club (Inc.)

Community Board Resolved PICB/2021/00031

Officer Recommendation accepted without change

Part C

That the Waipapa/Papanui-Innes Community Board:

1. Approves a grant of \$3,000 from its 2020-21 Discretionary Response Fund to Morrison Avenue Bowling Club (Inc.) towards the cost of purchasing fertilizers and chemicals for bowling green maintenance.

Emma Norrish/Pauline Cotter

Carried

12. Waipapa/Papanui-Innes Community Board 2020-21 Discretionary Response Fund Application - St Albans Residents' Association

Community Board Resolved PICB/2021/00032

Officer Recommendations accepted without change

Part C

That the Waipapa/Papanui-Innes Community Board:

1. Approves a grant of up to \$1,100 from its 2020-21 Discretionary Response Fund to St Albans Residents' Association towards Shirley Road Central Skip Day event and registration fee costs.

Pauline Cotter/Simon Britten

Carried

Emma Twaddell declared an interest in Item 12 and took no part in the Board's discussion or voting on this item.

13. Waipapa/Papanui-Innes Community Board 2020-21 Discretionary Response Fund Application - St Albans Residents Association

Community Board Resolved PICB/2021/00033

Officer Recommendations accepted without change

Part C

That the Waipapa/Papanui-Innes Community Board:

1. Approves a grant of \$5,500 from its 2020-21 Discretionary Response Fund to St Albans Residents' Association towards the purchase of security cameras for Te Kohinga St Albans Community Centre noting that future applications for funding will be split between the Papanui Innes and the Linwood-Central-Heathcote Community Boards.

Pauline Cotter/Mike Davidson

Carried

Emma Twaddell declared an interest in Item 13 and took no part in the Board's discussion or voting on this item.

14. Waipapa/Papanui-Innes Community Board Area Report - March 2021

Officer Recommendations / Ngā Tūtohu

That the Waipapa/Papanui-Innes Community Board:

1. Receives the Waipapa/Papanui-Innes Community Board Area Report for March 2021.

Community Board Resolved PICB/2021/00034

Part B

That the Waipapa/Papanui-Innes Community Board:

1. Receives the Waipapa/Papanui-Innes Community Board Area Report for March 2021.

2. Nominates Emma Norrish, accompanied by any other available Board members, to represent the Board as the wreath layer at both the Belfast and Papanui memorial services on ANZAC Day, Sunday 25 April 2021.

Simon Britten/Emma Twaddell

Carried

Item 7

15. Elected Members' Information Exchange / Te Whakawhiti Whakaaro o Te Kāhui Amorangi

Part B

Board members exchanged information on the following matters of interest:

15.1 Public Meeting - Housing Intensification

Duncan Webb, Member of Parliament for Christchurch Central, is holding a public meeting regarding policy changes for housing intensification. The meeting is scheduled for 7pm on Tuesday 20 April at the St Albans Community Centre.

15.2 Christchurch Northern Corridor Motorway Noise

The recent public meeting held in Redwood about noise from the new Christchurch Northern Corridor motorway resulted in the Mayor writing to the Minister of Transport to look at mitigation options such as a temporary speed limit reduction.

15.3 Edgware Village

The Board discussed the following matters in relation to the Edgware Village Area:

1. The proposed 'Barnes dance' crossing at the intersection of Colombo Street and Edgware Road.
2. Road hatching at the intersection of Trafalgar Street and Edgware Road.
3. Making the 30km/h speed limit more prominent.
4. Installing a 'Welcome to Edgware Village' sign.

The Board requested a site visit and workshop with relevant project staff to discuss these matters.

Meeting concluded at 10.19am.

CONFIRMED THIS 7TH DAY OF MAY 2021.

**EMMA NORRISH
CHAIRPERSON**



**Waipapa
Papanui-Innes Community Board
MINUTES ATTACHMENTS**

Date: Friday 16 April 2021
Time: 9am
Venue: Board Room, Papanui Service Centre,
Corner Langdons Road and Restell Street, Papanui

TABLE OF CONTENTS	PAGE
4.2 Flockton Street Increase in Traffic Volumes - Jo Scott	
A. Public Forum Presentation re Flockton Street - Jo Scott	2
9 Briefings	
A. Innovating Streets for People St Albans School Project.....	13

Completely unfair to block off other streets and channel it to us

It's a bloody travesty!

Horrendous and what's even clearer is the absolute incompetence

We have a justifiable right to be upset

The decision-making right throughout this project has been questionable

The whole project stinks of just get it done ... at any cost

Suburbs are being ravaged by traffic pollution!

The council screwed up and never finished the job. They widened Cranford, probably at enormous cost, then didn't use the extra space

DIABOLICAL!!

The street-by-street approach has made it all worse

Feedback from St Albans/Mairehau residents on the CNC Downstream Traffic Calming

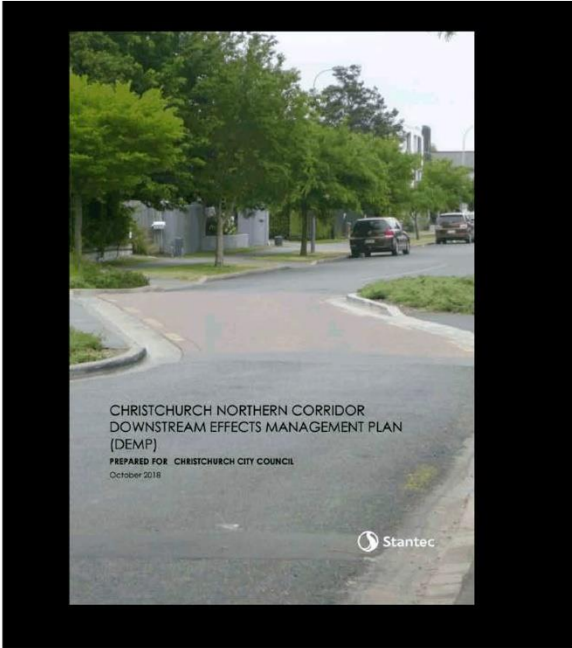
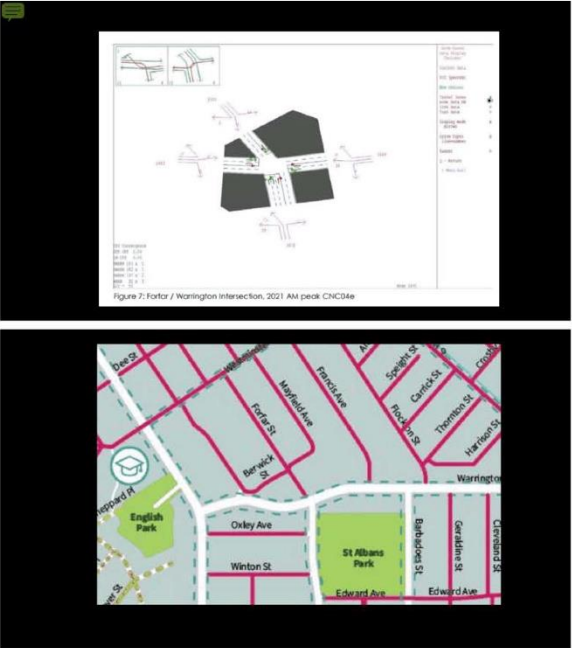
Attachment A

Item 4.2

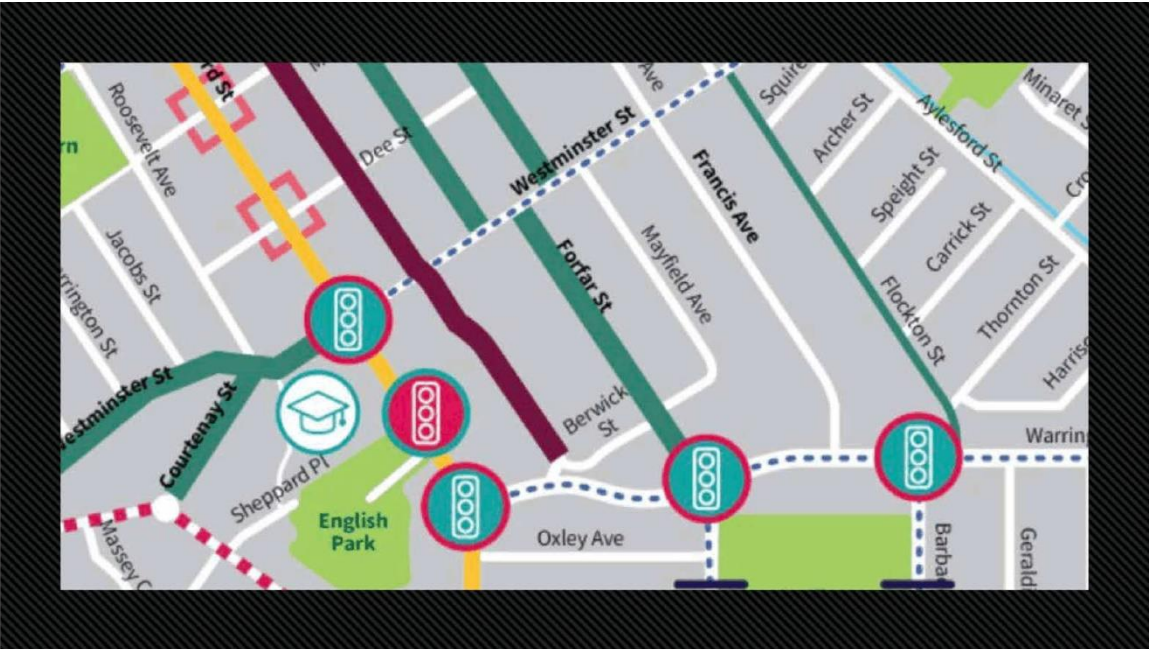
Item 7

Attachment A

Item 4.2



Attachment A Item 4.2 Item 7



Attachment A Item 4.2

Intersection upgrades

1. Forfar Street/Warrington Street

Overall we received 41 submissions regarding the proposed intersection changes at Forfar Street/Warrington Street. We received feedback in support and opposition to the closure of Forfar Street north of Warrington Street.

<i>Support the closure and lives in Forfar Street</i>	2
<i>Support the closures and lives outside of Forfar Street</i>	9
TOTAL	11

<i>Do not support the changes and lives in Forfar Street</i>	3
<i>Do not support the changes and lives outside of Forfar Street</i>	15
<i>Do not support the changes due to impact on Francis Ave and Flockton St</i>	12
TOTAL	30

Item 4.2

Attachment A

Item 7

Page 6

We received 12 submissions from residents of Francis Avenue and Flockton Street who were very concerned that the closure of Forfar Street would could an increase of traffic on these streets. While some residents were opposed, other suggested that if that closure was approved that traffic calming would be required on these streets to mitigate the impact of possible traffic increases.

Item 4.2

Attachment A

Page 7

" A network wide solution will be investigated to confirm that the likely rat-running (or short-cutting) issue will not get transferred from one street to another"

Ann Campbell CCC 02 May 2019

Attachment A Item 4.2

Item 7

Milestone	Data Date	Flockton		Francis			Thames		
		ADT	Mean Speed	ADT	Mean Speed		ADT	Mean Speed	
Baseline	Aug-18	2,411	49.9 48.4	796	39.7 38.2		1,414	46.1 47.1	
After closure of Forfar	27-Nov-20	3,384 +40.3%	45.7 46	2,049 +157%	38.5 38.7		1,473 +4%	44.4 44.2	
Opening of CNC	21-Dec-20	2,753 +14%	45.7 45.6	1,613 +102%	37.4 38		1,245 -12%	44.3 44.3	
	18-Jan-21	3,022 +25%	44.6 44.3	1,729 +117%	38.9 39.2		1,257 -11%	44.2 44.4	
	8 Feb 21	3,087 +28%	45.3 45	1,838 +131%	38 38.4		1,331 -6%	43.9 44.3	
Calming on Francis & Thames	01-Mar-21	3,771 +56%	45 44.9	1,511 +90%	36.3 37.4		1,560 +10%	43 43.4	
	08-Mar-21	4,098	45.1 45.1	1,143	37.2 38		821	37.5 33.6	
	15-Mar-21	4,061	45.2 45.2	1,096	38.4 39.3		710	36.9 32.7	
	22-Mar-21	4,046	45.1 45.1	1,080	38 38.7		1,247	42.1 42.2	
Cul de sac on Francis	29-Mar-21	4,234 +76%	44.9 45.2	457 -33%	34.2 33.1		1,158 -18%	43.4 42.9	

Attachment A Item 4.2

Item 7

Page 9



Attachment A Item 4.2

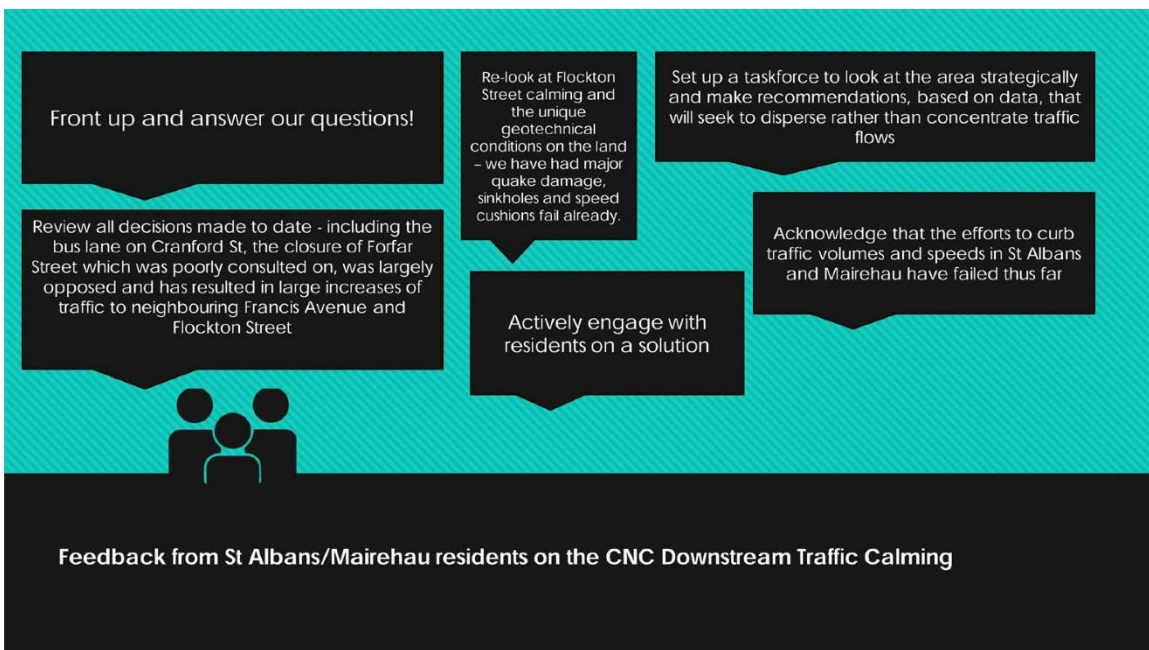
Page 10



Attachment A Item 4.2

Item 7

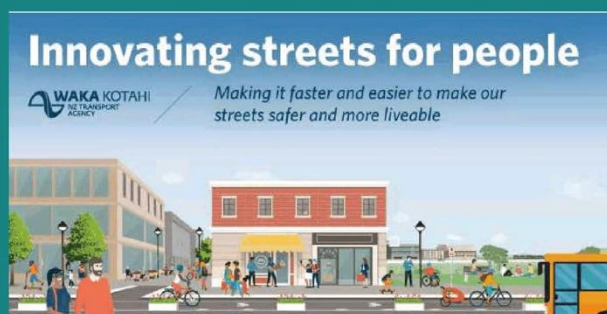
Page 11



Attachment A Item 4.2

Page 12

Attachment A Item 9



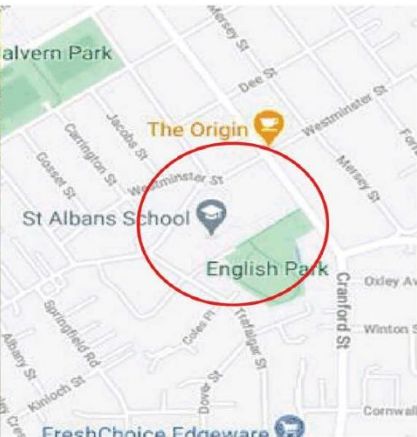
Innovating Streets for People – Pilot Fund

- Announced by Waka Kotahi 3 Apr 2020
- St Albans School application submitted on 8 May 2020 for funding in Round 1
- Successful applications announced 22 June 2020
- 90% funding assistance from Waka Kotahi, 10% funded by Council (total budget \$89,470)
- Aim to use tactical urbanism approaches to trial low-cost, temporary initiatives to make our streets safer and more liveable
- Previously presented to Community Board on 7 August 2020
- Delayed approach in collaboration with St Albans School



2

Innovating Streets for People: St Albans School Student Council





Attachment A Item 9

Item 7

Page 16



Attachment A Item 9

Page 17

Our ideas that are possible:



- **Sheppard Place:**
 - Funny signs: Moovooing cars along - shepherds and animal puns on signs
 - Road art painting in 3 min parking area
 - Increase 3 min parking area - **COMPLETED**
- **Cranford street:**
 - Pole wraps to raise awareness that a school is nearby
 - Green paint surface on two driveways on Cranford street
- **Colorful art paths to school at Westminster and English Park**
 - Acorns, rainbows, hopscotch, hearts and stars.
- **Courtney of street** - Bins only on north side
 - Trial no parking on north side of street on bin day



Attachment A Item 9

Item 7

Page 18

Some ideas we had that aren't possible now..... but think you should keep in mind in the future



- Sheppard Place – Stop all cars coming in but using bollards
- Cranford Street - pedestrian crossing – barne dance, everyone crosses
- Trafalgar St – Kea Crossing - Brighten up tiles Road Patrol Crossing
- English Park - Improve pedestrian access across to get to buses easier
- Courtney Street – street renewal to remove deep dish drains



Attachment A Item 9

Page 19

St Albans School – Safety Improvements - Timelines

- Review student-led design solutions to safety issues, with community and stakeholders – May
- Co-delivery of temporary, low-cost measures - May
- Trial measures in place - June
- Monitor and evaluate pre-, during and post-delivery – 1 month/6 months post-implementation
 - parking patterns, pedestrian / cyclist / scooter numbers, sentiment testing (survey(s))
- Decommission - TBC
- Share learnings with Waka Kotahi Community of Practice, Papanui-Innes Community Board, Key Stakeholders including St Albans School Community

7. Correspondence

Reference / Te Tohutoro: 21/531027

Report of / Te Pou Aidan Kimberley – Community Board Advisor

Matua: Aidan.Kimberley@ccc.govt.nz

General Manager / Mary Richardson – General Manager Citizens and Community

Pouwhakarae: Mary.Richardson@ccc.govt.nz

1. Purpose of Report / Te Pūtake Pūrongo

Correspondence has been received from:

Name	Subject
Project Manager Transport	Lower Styx and Marshlands Roads Update

2. Officer Recommendations / Ngā Tūtohu

That the Papanui-Innes Community Board:

1. Receive the information in the correspondence report dated 07 May 2021

Attachments / Ngā Tāpirihanga

No.	Title	Page
A ↓	Community Board Update Lower Styx/Marshland Roads Works	26



Community Board Update - April 2021

Hawkins/Lower Styx/Marshland Intersection and Bridge Upgrade

Project Objectives:

The Project scope includes upgrading the intersection of Hawkins Rd, Lower Styx Rd and Marshland Rd to a signalized intersection with associated intersection layout improvements and widening of the Marshland Rd Bridge crossing the Styx River. Pedestrian and Cyclist Facilities are incorporated into the intersection improvements. These works will ensure that the intersection will operate safely and efficiently with the long-term expected growth in traffic volumes.

Propose of this update is to provide an insight as to the construction progress on site. It is intended a progress update is provided to both Community Boards on a monthly basis.

Forward works:

Progress on site has been positive over the last month with the river diversion works completed and off site fabrication of the 22 new concrete piles are now complete with the precast concrete bridge beams underway. During the river diversion works the project ecologist relocated 306 juvenile lamprey and 4 freshwater crayfish. The first of the new piles are expected to be driven on site early May. The culvert extension under Hawkins Road (for the new left hand turn lane) is expected to be installed starting from mid-May with the preparatory works underway. Most of the services relocations (electrical, telecommunications, water, stormwater) are nearing completion.

The temporary traffic management plan listed below will enable a safe working environment for our workers and moving large equipment on site. As the new bridge deck is build there will be a further temporary traffic management changes as we build the new road.

Co-ordination with Orion on their new 66 KVA cable is continuing particularly around and traffic detours on site.

Bridge Widening Works (East side)

- Piling – May/June 2021
- Bridge beam installation – August 2021
- Swap Traffic onto new bridge alignment – Late 2021
- Complete West side of Bridge works – Early 2022



Community Board Update - April 2021

Civil Works

- Service Relocation Works (Incl. Removal of overhead cables) – Late 2021
- Completion of all box culvert and river works – End June 2021
- Pavement/Road Construction – Ongoing throughout contract
- Traffic lights installed/Operational – Early 2021
- Road / Intersection completed – April 2022

Temporary Traffic movements:

Hawkins Rd closure – May to October 2021

Lower Styx Rd – One lane until late 2021

Marshlands Rd – Reduced Lane width – May 2021 to April 2022

Marshlands Rd – 72 hour one lane – For stitching new bridge deck to existing bridge– October 2021

Work completed to date:

- Project Start date – End January 2021
 - Demolition of existing House and clearance of trees
 - Widened the Styx River to allow for Bridge extension
 - Lamprey Fish/Lizard/other river Fauna trapping and relocation from site area
 - Gabion Wall/ground improvements for Bridge Abutment construction both sides of the river
 - Installed temporary works for Bridge Construction
 - New Stormwater pipes and Swale construction
 - Stage 1 of 4 Service relocation work (Power and telecommunications)
-

Community Board Update - April 2021

Site Photos



View from existing Bridge over Styx River prior to starting work



View from existing Bridge to South side of river Gabion Wall construction

Community Board Update - April 2021



Gabion Wall construction North side of River



Lower Styx Rd, Service trench installed, overhead power lines removed, new light poles installed



Community Board Update - April 2021

Thanks for your patience as we work in your area



Noise

There may be increased noise, dust and vibrations during work but it shouldn't impact on your power, water, gas or phone services.



Safety

Safety is our biggest priority so please keep children and pets away from worksites.



Other projects

Learn more about the Council's works.

ccc.govt.nz/w

Christchurch
City Council 

8. Proposed renaming of Styx River Reserve No.2 and Kaputone Esplanade Reserve

Reference / Te Tohutoro: 21/290069

Report of / Te Pou Matua:	Sarah Blows, Parks Planner, Sarah.Blows@ccc.govt.nz Kim Swarbrick, Engagement Advisor, Kim.Swarbrick@ccc.govt.nz Antony Shadbolt, Team Leader Biodiversity, Antony.Shadbolt@ccc.govt.nz
General Manager / Pouwhakarae:	Mary Richardson, General Manager Citizens & Community, Mary.Richardson@ccc.govt.nz

1. Purpose of the Report / Te Pūtake Pūrongo

- 1.1 The purpose of this report is to respond to Waipapa/Papanui-Innes Community Board resolution (PICB/2021/00003) and seek approval to rename two reserves:
 - Styx River Reserve No. 2 rename to *Te Waoku Kahikatea* (Outlined on **Attachment A**).
 - Part of Kaputone Esplanade Reserve rename to *Te Waoku Kapuka* (Outlined on **Attachment B**).
- 1.2 Ngāi Tūāhuriri have provided the new names for the reserves based on the use and type of trees on the sites.
- 1.3 The significance of the project is low. The level of significance was determined by the project being low cost, minimal change that does not affect the Council's ability to deliver agreed levels of service, and the reversal and full restoration of the status quo is possible and can be achieved in relatively short time and at little cost.

2. Officer Recommendations / Ngā Tūtohu

That the Waipapa/Papanui-Innes Community Board:

1. Approve the renaming of two reserves:
 - a. Styx River Reserve No. 2 rename to *Te Waoku Kahikatea* (Outlined on Attachment A)
 - b. Part of Kaputone Esplanade Reserve rename to *Te Waoku Kapuka* (Outlined on Attachment B)

3. Reason for Report Recommendations / Ngā Take mō te Whakataua

- 3.1 The current reserve names do not reflect the significance of the area to mana whenua.
- 3.2 The Kahukura Māori Healing Group, the Styx living Laboratory Trust, and the New Zealand Conservation Trust have been working in the reserves and would like the names of the reserves to reflect the site.
- 3.3 Renaming the reserves promotes a strong sense of community, active participation in civic life, and builds on the relationship between Te Rūnanga o Ngāi Tahu and the Te Hononga-Council Papatipu Rūnanga.

4. Alternative Options Considered / Ētahi atu Kōwhiringa

- 4.1 Do not rename Styx River Reserve No. 2 or Part of Kaputone Esplanade Reserve.
 - 4.1.1 Advantage: no further action or associated cost is required.
 - 4.1.2 Disadvantage: does not promote a strong sense of community, active participation in civic life, or build on the relationship between Te Rūnanga o Ngāi Tahu and the Te Hononga–Council Papatipu Rūnanga.

5. Detail / Te Whakamahuki

- 5.1 Styx River Reserve No. 2, located at 303 Radcliffe Road, contains one land parcel Lot 3 DP 313448 which is classified as a Local Purpose (Wetlands) Reserve under the Reserves Act 1977. Restoration planting has been undertaken by the community.
- 5.2 Kaputone Esplanade Reserve is located at 479 Marshland Road and the four land parcels to be renamed are classified under the Reserves Act 1977. They are Lot 11 DP 392355 (Local Purpose (Drainage) Reserve), Lot 1 DP 425675 (Local Purpose (Drainage) Reserve), Lot 2 DP 425675 (Local Purpose (Drainage) Reserve), and Lot 6 DP 392355 (Local Purpose (Esplanade) Reserve).
- 5.3 Ngāi Tūāhuriri was consulted on names for a number of sites, including these, in 2018. The Council's Ngāi Tahu Partnership Team have been given the mandate to provide suitable names for parks and reserves. Te Waoku (the forest) is the first part of the names to signify what was (or what will be) on said site(s). The names Kahikatea and Kapuka are in relation to types of trees.
- 5.4 There has been numerous community planting days to establish both of these reserves. The Kahukura Māori Healing Group, the Styx living Laboratory Trust, and the New Zealand Conservation Trust are particularly involved with Styx River Reserve No. 2.
- 5.5 Staff presented a report to the Waipapa/Papanui-Innes Community Board on 29 January 2021 seeking approval to engage with the community about the proposed renaming of the two reserves.
- 5.6 The Board resolved (PICB/2021/00003) for staff to engage with the community about the proposed renaming of two reserves and request staff to report back to the Community Board on the outcome of the consultation.
- 5.7 Community and key stakeholders were able to provide feedback via an engagement process from 2 February to 28 February 2021. Consultation documentation was delivered to 99 nearby properties and businesses, 23 stakeholder emails and six postal stakeholders.
 - 5.7.1 During this time we heard from 11 respondents. Four respondents stated their support for the name changes. Five objected and two did not indicate either way. The main comments that arose were:

Repetition	Positive responses
5	Statements of support for the new names
3	Names are appropriate for the area in recognising predominant vegetation
1	Grateful for the gifted names
Repetition	Opposed responses
5	Dual names in Māori and English would be better
3	Using Te Reo Māori is alienating and derisory

- 5.7.2 One respondent provided further information directly to Community Board in the form of a submission and a book titled “Radcliffe” and Beyond: Some Styx River Localities/Names. This respondents view is that the area take the name of Radcliffe to reflect the name chosen for the area by former owners the Beally brothers.
- 5.8 Interpretation signage is planned for Styx River Reserve No.2 (proposed name Te Waoku Kahikatea) and is subject to funding availability. This signage seeks to educate and cover key ecological points of interest, as well as Māori and European history of the sites and wider area. A consultant was engaged in 2019 to develop an interpretation plan for the site. The Council intends to implement this plan when funding becomes available.
- 5.9 The Board also requested staff begin the process of returning the name of the Kaputone Stream to the original Māori name of Kā Pūtahi.
- 5.9.1 Staff worked alongside Ngāi Tūāhuriri and Ngāi Tahu and are submitting a proposal to New Zealand Geographic Board Ngā Pou Taunaha o Aotearoa (NZGB) to alter the name of Kaputone Creek to Kā Pūtahi.
- 5.9.2 The NZGB will review the proposal and if accepted will publicly consult on the proposal.
- 5.10 The decision affects the following wards/Community Board areas:
- 5.10.1 Innes ward.

6. Policy Framework Implications / Ngā Hīraunga ā- Kaupapa here

Strategic Alignment / Te Rautaki Tīaroaro

- 6.1 This decision aligns with Council’s vision:
- 6.1.1 Whiria nga whenua o nga papa Honoa kit e maurua taukiuku - the partnership with Papatipu Rūnanga reflects mutual understanding and respect, and a goal of improving the economic, cultural, environmental and social wellbeing for all.
- 6.2 The decision is consistent with Council’s Community Outcomes:
- 6.2.1 Celebration of our identity through arts, culture, heritage, sport and recreation.
- The Council has a leadership role in making Ōtautahi - Christchurch a city where diversity is welcomed and celebrated. The Council is also committed to a partnership relationship with Ngāi Tahu Papatipu Rūnanga which recognises that they are mana whenua for the Ōtautahi - Christchurch district.
 - As mana whenua, Ngāi Tahu has the longest association with many places and resources in the district, including settlements, transport routes, gardens, urupā (burial grounds), and places of importance for mahinga kai (food and resources).
- 6.3 This report supports the [Council's Long Term Plan \(2018 - 2028\)](#):
- 6.3.1 Activity: Parks & Foreshore
- Level of Service: 6.3.5 Overall customer satisfaction with the presentation of the City’s Parks. - Regional Parks presentation: resident satisfaction >=80 %.

Policy Consistency / Te Whai Kaupapa here

- 6.4 The decision is consistent with Council’s Plans and Policies.
- 6.5 The Council Policy Register: Naming of Reserves and Facilities 1993, outlines the procedure for renaming of reserves; which is for the proposed reserve names to be referred to the

Community Board in the first instance, then referred to the community for comment prior to final adoption and recommendation to the Council.

- 6.6 The Community Board has delegated authority under the revised Delegations Register (March 2021) to determine the name of any reserve, and to determine the change of name of any reserve.

Impact on Mana Whenua / Ngā Whai Take Mana Whenua

- 6.7 The decision does involve a decision in relation to ancestral land or a body of water or other elements of intrinsic value, therefore this decision is of interest to Mana Whenua, their culture and traditions.
- 6.8 Ngāi Tūāhuriri have provided the new names for the reserves based on the use and type of trees on the sites.
- 6.9 The names are recommended by Ngāi Tahu to reflect the significance of the area to mana whenua.
- 6.10 The Kahukura Māori Healing Group have been actively participating in the restoration of the reserves and support the proposed renaming of the reserves.

Climate Change Impact Considerations / Ngā Whai Whakaaro mā te Āhuarangi

- 6.11 This decision does not raise climate change impact considerations. The plants that have been used in the restoration of the reserves are native to the area and assist with natural carbon sequestration.

Accessibility Considerations / Ngā Whai Whakaaro mā te Hunga Hauā

- 6.12 This decision does not raise accessibility considerations.

7. Resource Implications / Ngā Hīraunga Rauemi

Capex/Opex / Ngā Utu Whakahaere

- 7.1 Cost to Implement - The naming of reserves is an operational cost included as part of the Parks Unit planning work. There will be a cost to replace signage if the reserves are renamed.
- 7.2 Maintenance/Ongoing costs - There are no maintenance or on-going costs associated with the naming process of the reserves.
- 7.3 Funding Source - Part of the Parks Unit budget.

Other / He mea anō

- 7.4 Not applicable.

8. Legal Implications / Ngā Hīraunga ā-Ture

Statutory power to undertake proposals in the report / Te Manatū Whakahaere Kaupapa

- 8.1 The Community Board has delegated authority under the revised Delegations Register (March 2021) to determine the name of any reserve, and to determine the change of name of any reserve.

Other Legal Implications / Ētahi atu Hīraunga-ā-Ture

- 8.2 There is not a legal context, issue or implication relevant to this decision.
- 8.3 This report has not been reviewed and approved by the Legal Services Unit.

9. Risk Management Implications / Ngā Hīraunga Tūraru

- 9.1 There are minimal if any risks associated as the names of the reserves comply with the Council Policy Register: Naming of Reserves and Facilities 1993, and Delegations Register.

Attachments / Ngā Tāpirihanga

No.	Title	Page
A ↓	Styx River Reserve No.2 proposed name Te Waoku Kahikatea	36
B ↓	Kaputone Esplanade Reserve proposed name Te Waoku Kapuka	37

In addition to the attached documents, the following background information is available:

Document Name	Location / File Link
Not applicable.	Not applicable.

Confirmation of Statutory Compliance / Te Whakatūtutanga ā-Ture

Compliance with Statutory Decision-making Requirements (ss 76 - 81 Local Government Act 2002).

(a) This report contains:

- (i) sufficient information about all reasonably practicable options identified and assessed in terms of their advantages and disadvantages; and
- (ii) adequate consideration of the views and preferences of affected and interested persons bearing in mind any proposed or previous community engagement.

(b) The information reflects the level of significance of the matters covered by the report, as determined in accordance with the Council's significance and engagement policy.

Signatories / Ngā Kaiwaitohu

Authors	Sarah Blows - Parks Planner Kim Swarbrick - Engagement Advisor
Approved By	Kelly Hansen - Manager Parks Planning & Asset Management Kay Holder - Manager Regional Parks Andrew Rutledge - Head of Parks Mary Richardson - General Manager Citizens & Community





9. English Park - Ground Lease to Environment Canterbury

Reference / Te Tohutoro: 21/427095

Report of / Te Pou

Matua:

Dan Egerton, Property Consultant, dan.egerton@ccc.govt.nz

General Manager /

Pouwhakarae:

Mary Richardson, General Manager Citizens & Community;

Mary.Richardson@ccc.govt.nz

1. Purpose of the Report / Te Pūtake Pūrongo

- 1.1 The purpose of this report is to seek the recommendation of the Waipapa/Papanui-Innes Community Board to approve a ground lease to Environment Canterbury (ECAN) on English Park, 117 Cranford Street. This report has been written at the request of ECAN as the existing ECAN site at Coles Place is no longer able to be utilised due to a housing development being undertaken by the Otautahi Community Housing Trust (OCHT).
- 1.2 The decision in this report is of low significance in relation to the Christchurch City Council's Significance and Engagement Policy. The level of significance was determined by assessing a number of factors:
 - 1.2.1 Level of impact – negligible disruption to the park.
 - 1.2.2 Social impacts – less than minor impact on the public's ability to use the park, continuation of air quality data.

2. Officer Recommendations / Ngā Tūtohu

That the Waipapa/Papanui-Innes Community Board:

1. Grants a ground lease to Environment Canterbury over 30 square metres of land at English Park at the location shown on the plan in Attachment A for a period of ten years, with two further rights of renewal of ten years each for a total lease term of 30 years.
2. Authorises the Property Consultancy Manager to conclude and administer the terms and conditions of the lease.

3. Reason for Report Recommendations / Ngā Take mō te Whakatau

- 3.1 ECAN are responsible for capturing air quality data, and this site would be one of three across Christchurch.
- 3.2 The previous site, which was located at Coles Place, is no longer able to be utilised due to OCHT undertaking a housing development on that site.
- 3.3 The advantages of this option are:
 - Air monitoring data will continue to be captured and the proximity of this site to the former location means that the data collected historically will be reasonably consistent.
- 3.4 This site also satisfies other ECAN requirements:
 - Reasonably clear surrounds (minimal large trees/buildings in proximity)
 - Ability to connect to power supply

- 24/7 vehicle access to service instruments/attend breakdowns
- Ability to enter into a long term lease.

3.5 Council will derive an income from the ground lease.

3.6 The disadvantage of this option is:

3.6.1 30m² of the park will not be available for members of the public to use.

4. Alternative Options Considered / Ētahi atu Kōwhiringa

4.1 Not granting the ground lease and suggesting ECAN find an alternative site:

4.1.1 Advantages of this would be that the area of English Park would not be built out.

4.1.2 The disadvantages of this would be that ECAN would not be able to readily utilise and compare historical data due to any future location potentially being too far away to accurately compare the historical data.

4.1.3 Council would not derive an income from the ground lease.

5. Detail / Te Whakamahuki

5.1 English Park, located at 117 Cranford St, comprises some 2.7ha, is legally described as Lot 1, 3 Deposited Plan 316694 and held within Record of Title 65157. It is also home to Mainland Football.

5.2 The size of the site required is only 30m² and is proposed to be situated adjoining the entrance of Mainland Football's fields.

5.3 The site would house a 2.4m x 4.0m portable building, which would be fenced to provide security.

5.4 The fenced area needs be 30m² to allow for the 6m mast to be lowered for maintenance.

5.5 The proposed location is shown on **Attachment A**.

5.5.1 An image of the existing facility at Coles Place is shown on **Attachment B**. This new facility will have a shorter mast (6m).

5.6 When considering the wider views and preferences of the community, Parks are captured under the provisions of section 138 of the Local Government Act 2002.

138 Restriction on disposal of parks (by sale or otherwise)

(1) A local authority proposing to sell or otherwise dispose of a park or part of a park must consult on the proposal before it sells or disposes of, or agrees to sell or dispose of, the park or part of the park.

(2) In this section,—

dispose of, in relation to a park, includes the granting of a lease for more than 6 months that has the effect of excluding or substantially interfering with the public's access to the park

park—

(a) means land acquired or used principally for community, recreational, environmental, cultural, or spiritual purposes; but

(b) does not include land that is held as a reserve, or part of a reserve, under the [Reserves Act 1977](#).

Section 138: substituted, on 28 June 2006, by [section 13](#) of the Local Government Act 2002 Amendment Act 2006 (2006 No 26).

5.7 It is considered that the granting of a ground lease of 30m² will not have the effect of excluding or substantially interfering with the public's access to the park and as such consultation under section 138 is not technically required.

- 5.8 The principal tenant, Mainland Football, has been engaged with and they have had input into the location of the building on site.
- 5.9 However a low level consultation was undertaken whereby a flier was delivered to 80 adjacent properties and emailed to eight lessees and stakeholders.
- 5.10 One response was received which was not in objection to the proposal, but had reservations about the location; the consultation log is attached to this report as **Attachment C**.
- 5.11 The suggested location within that submission was the preferred location by both ECAN and the Council, however the proposed site was the only workable location within English Park due to it being an urban park and as such has substantial existing in-ground services which restricted the available locations.
- 5.12 Provided that the Community Board accepts the staff recommendation, the ground lease rental will be determined by an independent registered valuation and the Property Consultancy Manager will implement the lease on suitable terms and conditions.
- 5.13 The decision affects the following wards/Community Board areas:
 - 5.13.1 Waipapa/Papanui-Innes Community Board

6. Policy Framework Implications / Ngā Hīraunga ā- Kaupapa here

Strategic Alignment / Te Rautaki Tīaroaro

- 6.1 This report does not support the [Council's Long Term Plan \(2018 - 2028\)](#).

Policy Consistency / Te Whai Kaupapa here

- 6.2 The decision is consistent with Council's Plans and Policies.

Impact on Mana Whenua / Ngā Whai Take Mana Whenua

- 6.3 The decision does not involve a significant decision in relation to ancestral land or a body of water or other elements of intrinsic value, therefore this decision does specifically impact Mana Whenua, their culture and traditions.
- 6.4 The location of the facility will not have a material impact on the public's ability to enjoy the park.

Climate Change Impact Considerations / Ngā Whai Whakaaro mā te Āhuarangi

- 6.5 Provides air quality data which will assist with future decision making.

7. Resource Implications / Ngā Hīraunga Rauemi

Capex/Opex / Ngā Utu Whakahaere

- 7.1 Cost to Implement – all costs to be borne by the applicant
- 7.2 Maintenance/Ongoing costs – The Council is not responsible for maintenance; ongoing lease management costs are included in current operational budgets.
- 7.3 Funding Source – The Council, as landowner, has no direct funding obligations.

8. Legal Implications / Ngā Hīraunga ā-Ture

Statutory power to undertake proposals in the report / Te Manatū Whakahaere Kaupapa

- 8.1 The Council has delegated to Community Boards the authority to grant leases of licences for a maximum term of 35 years to any person or body over parks, and to authorise staff to sign all required documents. (Delegation Register: Part D – Sub Part 1 – Community Boards)

Other Legal Implications / Ētahi atu Hīraunga-ā-Ture

- 8.2 The legal consideration is the entering into a lease with an entity (ECAN). The documents are drafted by the Council's legal unit on a standard form and terms and conditions agreed to by ECAN.
- 8.3 There are a number of matters that need consideration when contemplating a unilateral dealing. These matters are outlined in **Appendix D** to this report.
- 8.4 This report has not been reviewed and approved by the Legal Services Unit.

9. Risk Management Implications / Ngā Hīraunga Tūraru

- 9.1 Any lease granted will have health and safety provisions contained within to ensure there is no risk or liability to the Council as landowner.

Attachments / Ngā Tāpirihanga

No.	Title	Page
A ↓	Proposed Site Location	44
B ↓	Monitoring Station Image at Coles Place	45
C ↓	Consultation Log	46
D ↓	Considerations for Dealing Unilaterally	47

In addition to the attached documents, the following background information is available:

Document Name	Location / File Link
Not applicable	Not applicable

Confirmation of Statutory Compliance / Te Whakatūtutanga ā-Ture

Compliance with Statutory Decision-making Requirements (ss 76 - 81 Local Government Act 2002).

(a) This report contains:

- (i) sufficient information about all reasonably practicable options identified and assessed in terms of their advantages and disadvantages; and
- (ii) adequate consideration of the views and preferences of affected and interested persons bearing in mind any proposed or previous community engagement.

(b) The information reflects the level of significance of the matters covered by the report, as determined in accordance with the Council's significance and engagement policy.

Signatories / Ngā Kaiwaitohu

Author	Dan Egerton - Property Consultant
Approved By	Kathy Jarden - Team Leader Leasing Consultancy Angus Smith - Manager Property Consultancy Andrew Rutledge - Head of Parks Mary Richardson - General Manager Citizens & Community





CONSULTATION LOG

Project: English Park – proposed leases for Environment Canterbury air monitoring station

Date: 29 March 2021

Consultation contact received from property owners, tenants and/or stakeholder list members

Date	Name	Representing	Contact details	From/To/ Method	Approve/ Object	Concern/Comments	Follow-up
1 April 2021				mail		<p>Morning Kim,</p> <p>Just a short note about your proposed air testing station at English Park.</p> <p>I don't object to the air station. But I think you should rethink where you plan to locate it. Where you propose is beside the main entrance to the soccer ground, the same area inside the soccer ground is regularly use for BBQ's which I am sure will affect the results. The second concern I have is the area in concern is often frequented by groups of young people who because of the isolation and lack of any residents, I suspect will have great fun vandalizing your equipment. Thirdly, the proposed location will impede people view into the soccer ground and be an unnecessary distraction to an otherwise attractive landscaped area.</p> <p>Can I suggest you move the location more towards behind the garage, and to the right as detailed in your picture in the picture and closer to the main building, that area is already semi secluded and landscaped, where the air testing equipment would be less accessible and better protected and less noticeable.</p> <p>Best regards, </p>	<p>Reply sent 12/04/21</p> <p>TRIM 21/427712</p>

English Park - ECAN

Attachment B

Legal Considerations – Dealing Unilaterally

- 1.1 The Council must consider and meet the requirements of section 14 of the Local Government Act 2002 (LGA) in particular:
 - (1)(a) Conduct its business in an open, transparent, and democratically accountable manner,
 - (1)(f) Undertake any commercial transactions in accordance with sound business practices.
 - (1)(g) Ensure prudent stewardship and the efficient and effective use of its resources in the interests of its district or region, including planning effectively for the future management of its assets.
- 1.2 The relevant Council policy as recorded in the Council's Policy Register as Property – Leasing Council Property is "where the Council recognises there is only one logical lessee for a public property, the Council will unilaterally deal with that lessee." This includes facilities linked to contracts including but not limited to buildings on parks and reserves and not for profit organisations.
- 1.3 In addition it is useful and supportive to consider the Ministry of Business, Innovation and Employment 'Unsolicited Unique Proposals - How to deal with uninvited bids'; guidance for government entities dated May 2013 that recommends when evaluating an unsolicited proposal it needs to be ensured that there is a sound business case to support the decision to accept the unique unsolicited proposal.
- 1.4 The purpose of the MBIE Guidance on Unsolicited Proposals is to provide a methodology for considering unsolicited proposals in a way that:
 - is transparent and fair to everyone;
 - encourages the supplier community to put forward good ideas;
 - promotes objectivity; and
 - supports decisions based on sound fact and evidence.

Having given consideration to the above factors, it is felt that this is not an unsolicited proposal but rather a continuation of services provided by ECAN (air monitoring).

Legal Considerations – Dealing Unilaterally

- 1.5 Decision Making sections 76 – 82 LGA
 - Section 76 provides that "Every decision made by a local authority must be made in accordance with such of the provisions of sections 77, 78, 80, 81 and 82 as are applicable". In summary those sections provide:
 - Section 77 a local authority must, in the course of the decision-making process, seek to identify all reasonably practicable options for the achievement of the objective of a decision and in doing so assess the options in terms of their advantages and disadvantages.

- Section 78 the views and preferences of persons likely to be affected by, or to have an interest in, the matter must be considered.
- Section 79 provides that in considering how to achieve compliance with sections 77 and 78 they must consider the significance of the matter in accordance with its Significance and Engagement Policy.
- Section 80 sets out the matters that need to be clearly identified when making a decision that is inconsistent i.e. the inconsistency, reason for it and any intention of the local authority to amend the policy or plan to accommodate the decision.
- Section 81 provides contributions to decision making by Maori.
- Section 82 sets out the principles of consultation.

Section 78 does not require the Council to undertake a consultation process of itself but the Council must have some way of identifying the views and preferences of interested and affected persons.

As there has been a level of consultation Section 78 has been satisfied.



10. Waipapa/Papanui-Innes Community Board 2020-21 Discretionary Response Fund - Papanui Primary School

Reference / Te Tohutoro: 21/472830

Report of / Te Pou Trevor Cattermole: Community Development Advisor.

Matua: Trevor.Cattermole@ccc.govt.nz

General Manager / Mary Richardson: General Manager Citizens & Community

Pouwhakara: Mary.Richardson@ccc.govt.nz

1. Purpose of Report / Te Pūtake Pūrongo

- 1.1 The purpose of this report is for the Waipapa/Papanui-Innes Community Board to consider an application for funding from its 2020-21 Discretionary Response Fund from the organisation listed below.

Funding Request Number	Organisation	Project Name	Amount Requested	Amount Recommended
00062605	Papanui Primary School	150 th Anniversary Celebration	\$6,510	\$6,000

- 1.2 There is currently a balance of \$43,310 remaining in the fund

2. Officer Recommendations / Ngā Tūtohu

That the Waipapa/Papanui-Innes Community Board:

- Approves a grant of \$6,000 from its 2020-21 Discretionary Response Fund to Papanui Primary School towards the 150th Anniversary Celebration.

3. Key Points / Ngā Take Matua

Strategic Alignment / Te Rautaki Tīaroaro

- 3.1 To consider providing funding support to a local school and important community hub celebrating its 150th Anniversary.
- 3.2 The recommendation is strongly aligned to the Strategic Framework and in particular the strategic priority of Building Strong Communities. It will also align to the Waipapa/Papanui Innes Community Board outcomes that “Community Outcomes and Priorities of young people and older adults are supported” Support through advocacy and funding a range of social and recreational projects with a focus on children, youth, elderly and volunteers.

Decision Making Authority / Te Mana Whakatau

- 3.3 The Community Board has the delegated authority to determine the allocation of the Discretionary Response Fund for each community
- 3.3.1 Allocations must be consistent with any policies, standards or criteria adopted by the Council
- 3.3.2 The Fund does not cover:
- Legal challenges or Environment Court challenges against the Council, Council Controlled organisations or Community Board decisions

- Projects or initiatives that change the scope of a Council project or that will lead to ongoing operational costs to the Council (though Community Boards can recommend to the Council that it consider a grant for this purpose).

Assessment of Significance and Engagement / Te Aromatawai Whakahirahira

- 3.4 The decisions in this report are of low significance in relation to the Christchurch City Council's Significance and Engagement Policy.
- 3.5 The level of significance was determined by the number of people affected and/or with an interest.
- 3.6 Due to the assessment of low significance, no further community engagement and consultation is required.

Discussion / Kōrerorero

- 3.7 At the time of writing, the balance of the 2020-21 Discretionary Response Fund is as below.

Total Budget 2020/21	Granted To Date	Available for allocation	Balance If Staff Recommendation adopted
\$108,506	\$65,196	\$43,310	\$37,310

- 3.8 Based on the current Discretionary Response Fund criteria, the applications listed above are eligible for funding.
- 3.9 The attached Decision Matrix provides detailed information for the applications. This includes organisational details, project details, financial information and a staff assessment.

Attachments / Ngā Tāpirihanga

No.	Title	Page
A A	Decision Matrix - Papanui Primary School	51

Confirmation of Statutory Compliance / Te Whakatūtutanga ā-Ture

Compliance with Statutory Decision-making Requirements (ss 76 - 81 Local Government Act 2002).

- (a) This report contains:
- (i) sufficient information about all reasonably practicable options identified and assessed in terms of their advantages and disadvantages; and
 - (ii) adequate consideration of the views and preferences of affected and interested persons bearing in mind any proposed or previous community engagement.
- (b) The information reflects the level of significance of the matters covered by the report, as determined in accordance with the Council's significance and engagement policy.

Signatories / Ngā Kaiwaitohu

Author	Trevor Cattermole - Community Development Advisor
Approved By	Matthew McLintock - Manager Community Governance Team

2020/21 DRF PAPANUI-INNES DECISION MATRIX

Priority Rating

One	Meets all eligibility criteria and contributes significantly to Funding Outcomes and Priorities. Highly recommended for funding.
Two	Meets all eligibility criteria and contributes to Funding Outcomes and Priorities. Recommended for funding.
Three	Meets all eligibility criteria and contributes to Funding Outcomes and Priorities but to a lesser extent than Priority 2 applications. Not recommended for funding.
Four	Meets all eligibility criteria and has minimum contribution to Funding Outcomes and Priorities / Insufficient information provided by applicant (in application and after request from Advisor) / Other funding sources more appropriate. Not recommended for funding.

00062605	Organisation Name	Name and Description	Funding History	Request Budget	Staff Recommendation	Priority
	Papanui Primary School	150th Anniversary Celebration A celebration of 150 years of education at Papanui Primary School. This will involve a one day event for our school community and the wider community including past-pupils and former staff.	This is the first time Papanui Primary has applied Other Sources of Funding Papanui Primary Board - \$2,000	Total Cost \$ 8,510 Requested Amount \$ 6,510 76% percentage requested Contribution Sought Towards: Equipment/Materials - \$500 (Portaloos) Traffic Management Plan - \$1,800 Equipment/Materials - \$500 (Bins and Skip) Salaries and Wages - \$500 (MC and technical support) Salaries and Wages - \$520 (Kapa Haka tutors) Volunteer Expenses - \$1,000 (Security) Salaries and Wages - \$500 (St Johns First Aid) Equipment/Materials - \$540 (Sound System) Equipment/Materials - \$250 (Stage) Equipment/Materials - \$400 (Advertising, Signage)	\$ 6,000 That the Waipapa/Papanui-Innes Community Board resolve to approve the making of a grant of \$6,000 from its 2020-21 Discretionary Response Fund to Papanui Primary School as a contribution towards the costs of their 150th Anniversary Celebration.	2

Organisation Details: Service Base: 40 Winters Road, Redwood, Christchurch. Legal Status: Other Established: 1/10/1871 Staff – Paid: 21 Volunteers: 40 Annual Volunteer Hours: 940 Participants: 1,000 Target Groups: Children/Youth Networks: Ministry of Education Organisation Description/Objectives: Education - primary school.	Alignment with Council Strategies and Policies <ul style="list-style-type: none">Strengthening Communities StrategyChildren and Youth StrategiesOlder Persons strategyPapanui-Innes Community Board Priorities: Support through advocacy and funding a range of social and recreational projects with a focus on Children, youth, elderly and volunteers Alignment with Council Funding Outcomes <ul style="list-style-type: none">Support, develop and promote capacityCommunity participation and awarenessEnhance community and neighbourhood safetyReduce or overcome barriersFoster collaborative responses Outcomes that will be achieved through this project <p>A community wide celebration of the school.</p> <p>Build connections between people - past, current and future.</p> <p>Current tamariki will be studying the history of the school and the community through the theme of Turangawaewae.</p> <p>Celebration and presentation of the tamariki's learning.</p> How Will Participants Be Better Off? <p>Participants will gain a sense of belonging to the school and community.</p> <p>Older participants will reconnect and re-establish links, share memories and celebrate.</p> <p>Current students will see themselves as a part of something bigger than themselves and will see them participating and contributing to the wider community.</p> <p>Current students are this year basing their education and curriculum on the theme of Turangawaewae - a place to stand.</p>	Staff Assessment <p>This year, the Papanui Primary School (formally known as Papanui District School) will celebrate its 150th Jubilee. The first meeting of the school committee was held in 1871 with occupation completed in 1872. Previous significant anniversaries have been held in 1951 (80th), 1971 (100th) and 1996 (125th).</p> <p>Given the uncertainty around COVID-19, the Board of Trustees have determined that the 150th Jubilee will be a one-day celebration to be held on Saturday 30 October. With this in mind the one day event will be a "birthday party" for the school and the wider community with the reunion part of the anniversary (dinners, informal get togethers) running separately from the day.</p> <p>Activities planned include a formal opening, (Roger McKay the ex-Board Chair for the 125th Jubilee Committee has been invited to speak), a flag raising ceremony, anniversary cake cutting, tree planting, decade photos of past pupils, performances and educational displays by children, a display of memorabilia, archives and photos, and the school Kapa Haka group will perform.</p> <p>The event which is student, school and community focused provides not only the opportunity to celebrate a milestone but also to reaffirm to students the importance of the wider community in relation to the school and themselves and to the wider community to remind them of the significant role the school has played over the years and continues to play in the social development of local tamariki.</p> <p>The event also provides the opportunity for the community to develop stronger ties with the school through increased parental involvement which reinforces a strong school and community.</p> <p>The school is intending to work with a number of local community organisations to deliver the event and Council staff will be supporting the school on the day.</p>
--	--	---

11. Waipapa/Papanui-Innes Community Board 2020-21 Discretionary Response Fund Application - Community Focus Trust

Reference / Te Tohutoro: 21/479131

Report of / Te Pou
Matua: Stacey Holbrough
Community Development Adviser
Stacey.holbrough@ccc.govt.nz

General Manager /
Pouwhakarae: Mary Richardson
General Manager – Community and Citizen
mary.richardson@ccc.govt.nz

1. Purpose of Report / Te Pūtake Pūrongo

- 1.1 The purpose of this report is for the Waipapa/Papanui-Innes Community Board to consider an application for funding from its 2020-21 Discretionary Response Fund from the organisation(s) listed below.

Funding Request Number	Organisation	Project Name	Amount Requested	Amount Recommended
00062752	Community Focus Trust	Community Development Worker	\$8,000	\$8,000

- 1.2 There is currently a balance of \$15,000 remaining in the fund

2. Officer Recommendations / Ngā Tūtohu

That the Waipapa/Papanui-Innes Community Board:

- Approves a grant of \$8,000 from its 2020-21 Discretionary Response Fund to Community Focus Trust towards their Community Development Worker.

3. Key Points / Ngā Take Matua

Strategic Alignment / Te Rautaki Tīaroaro

- 3.1 The recommendation is strongly aligned to the Strategic Framework and in particular the strategic priority of resilient communities. It will provide support to vulnerable communities.

Decision Making Authority / Te Mana Whakatau

- 3.2 The Community Board has the delegated authority to determine the allocation of the Discretionary Response Fund for each community
- 3.2.1 Allocations must be consistent with any policies, standards or criteria adopted by the Council
- 3.2.2 The Fund does not cover:
- Legal challenges or Environment Court challenges against the Council, Council Controlled organisations or Community Board decisions

- Projects or initiatives that change the scope of a Council project or that will lead to ongoing operational costs to the Council (though Community Boards can recommend to the Council that it consider a grant for this purpose).

Assessment of Significance and Engagement / Te Aromatawai Whakahirahira

- 3.3 The decisions in this report are of low significance in relation to the Christchurch City Council's Significance and Engagement Policy.
- 3.4 The level of significance was determined by the number of people affected and/or with an interest.
- 3.5 Due to the assessment of low significance, no further community engagement and consultation is required.

Discussion / Kōrerorero

- 3.6 At the time of writing, the balance of the <enter year> Discretionary Response Fund is as below.

Total Budget 2020/21	Granted To Date	Available for allocation	Balance If Staff Recommendation adopted
\$50,000	\$35,000	\$15,000	\$7,000

- 3.7 Based on the current Discretionary Response Fund criteria, the applications listed above are eligible for funding.
- 3.8 The attached Decision Matrix provides detailed information for the applications. This includes organisational details, project details, financial information and a staff assessment.

Attachments / Ngā Tāpirihanga

No.	Title	Page
A A	Waipapa/Papanui-Innes Community Board 2020-21 Discretionary Board Fund Decision Matrix - Community Focus Trust	55

Confirmation of Statutory Compliance / Te Whakatūtutanga ā-Ture

Compliance with Statutory Decision-making Requirements (ss 76 - 81 Local Government Act 2002).

(a) This report contains:

- (i) sufficient information about all reasonably practicable options identified and assessed in terms of their advantages and disadvantages; and
- (ii) adequate consideration of the views and preferences of affected and interested persons bearing in mind any proposed or previous community engagement.

(b) The information reflects the level of significance of the matters covered by the report, as determined in accordance with the Council's significance and engagement policy.

Signatories / Ngā Kaiwaitohu

Author	Stacey Holbrough - Community Development Advisor
Approved By	Matthew McLintock - Manager Community Governance Team

2020/21 DRF PAPANUI-INNES DECISION MATRIX

Priority Rating

One	Meets all eligibility criteria and contributes significantly to Funding Outcomes and Priorities. Highly recommended for funding.
Two	Meets all eligibility criteria and contributes to Funding Outcomes and Priorities. Recommended for funding.
Three	Meets all eligibility criteria and contributes to Funding Outcomes and Priorities but to a lesser extent than Priority 2 applications. Not recommended for funding.
Four	Meets all eligibility criteria and has minimum contribution to Funding Outcomes and Priorities / Insufficient information provided by applicant (in application and after request from Advisor) / Other funding sources more appropriate. Not recommended for funding.

00062752	Organisation Name Community Focus Trust	Name and Description Community Development Staff Member The Community Focus Trust (CFT), is a non-profit charitable organisation. Their aim is to facilitate practical support and social services to the community based on the community needs. COVID-19 has seen an increase in demand for their services. CFT is seeking funding for a new part-time Community Support Worker.	Funding History 2020/21 - \$15,000 (Community Development) SCF PI 2020/21 - \$2,000 (Community Development) SCF LCH 2020/21 - \$3,000 (Community Development) SCF FW 2019/20 - \$9,000 (Salary) SCF PI 2019/20 - \$3,000 (Salary, volunteer recognition and programme costs) SCF FWH 2019/20 - \$2,000 (Salary) SCF LCH 2019/20 - \$2,000 (Community Day) DRF PI 2019/20 - \$400 (Community Day) DRF LCH 2019/20 - \$400 (Community Day) DRF FWH 2018/19 - \$7,000 (\$5,000 towards salary Trust Manager and \$2,000 towards Gala Day expenses) SCF PI 2017/18 \$5,000 (Community Development) SCF PI Other Sources of Funding COGS - Pending Lotteries Community - Pending \$6,000 - Ministry of Social Development	Request Budget Total Cost \$28,080 Requested Amount \$ 8,000 28% percentage requested Contribution Sought Towards: Salaries and Wages - \$8,000	Staff Recommendation \$ 8,000 That the Waipapa/Papanui-Innes Community Board approves a grant of \$8,000 from its 2020-21 Discretionary Response Fund to Community Focus Trust towards their part-time Community Support Worker.	Priority 2
----------	---	--	---	---	--	---------------------------------

Organisation Details: Service Base: 140 Springfield Road, St Albans, Christchurch Legal Status: Incorporated Society Established: 1/10/2014 Staff – Paid: 1 Volunteers: 35 Annual Volunteer Hours: 2000 Participants: 1,000 Target Groups: Community Development Networks:	Alignment with Council Strategies and Policies <ul style="list-style-type: none"> Strengthening Communities Strategy Alignment with Council Funding Outcomes <ul style="list-style-type: none"> Support, develop and promote capacity Community participation and awareness Increase community engagement Reduce or overcome barriers Foster collaborative responses Outcomes that will be achieved through this project Increase community engagement. Community participation and awareness. Increase capacity with their COVID-19 response programmes. How Will Participants Be Better Off? Participants will have increased support from the Community Support Worker. Community Support Worker will connect participants to relevant services/programmes in the community.	Staff Assessment Community Focus Trust is an innovative and agile community organisation that quickly responds to the community needs. The Community Focus Trust provides many community programmes and services that have been identified by the community as a need. These include: Monthly Community Lunches - the lunch connects people providing a sense of community care and support. CAP Money - is a free, fun, interactive course that helps people to take control of their finances. Fruit and Vege Co-op - Every week approximately 140 packs are made up and distributed throughout the community within schools, the community centre and other organisations. BuyCycles - is a programme to improve access to bike ownership in individuals to support them in their recovery from alcohol or drug issues or in dealing with mental health issues. Community Garden - provide people with the opportunity to learn to grow vegetables During COVID-19 the Trust used their knowledge and experience from running the Fruit and Vege Co-op to successfully deliver Kai Boxes to local residents - during this time the Trust sourced over 1,200 boxes to people living in the Papanui-Innes community. The Trust has received funding to continue this service and look at sustainable and long-term options. The Trust is now exploring food response, security and sustainability and how their knowledge and experience can help bridge this gap. They are working in collaboration with Food Together on a social enterprise plan to look at addressing this need. CFT currently delivers 55 Produce Kai Boxes and 20 Essential Pantry Kai Boxes each week. They partner with Northgate Community Trust, Shirley Community Trust, The Neighbourhood Trust, St Albans community, and Te Puawaitanga Ki Ōtautahi Trust. Boxes are prioritised and given to those affected by COVID-19. With the increase in demand for their services the Trust are seeking a contribution toward a Community Support Worker. This part-time role would relieve some of the pressures on the Manager, so they can continue to support, engage, and connect, and make change in their local community.
--	---	--

Organisation Description/Objectives:
 Community Focus Trust's aim is embracing, equipping and empowering our community. Our aim is to facilitate practical support and social services to our community based on the needs as we find them.

12. Waipapa/Papanui-Innes Community Board 2020-21 Discretionary Response Fund Application - Te Ora Hou

Reference / Te Tohutoro: 21/479219

Report of / Te Pou Stacey Holbrough - Community Development Adviser

Matua: Stacey.Holbrough@ccc.govt.nz

General Manager / Mary Richardson - General Manager Citizens and Community

Pouwhakarae: Mary.Richardson@ccc.govt.nz

1. Purpose of Report / Te Pūtake Pūrongo

- 1.1 The purpose of this report is for the Waipapa/Papanui-Innes Community Board to consider an application for funding from its 2020-21 Discretionary Response Fund from the organisation(s) listed below.

Funding Request Number	Organisation	Project Name	Amount Requested	Amount Recommended
00063082	Te Ora Hou	Polyphony 2021	\$6,000	\$5,000

- 1.2 There is currently a balance of \$43,310 remaining in the fund

2. Officer Recommendations / Ngā Tūtohu

That the Waipapa/Papanui-Innes Community Board:

- Approves a grant of \$5,000 from its 2020-21 Discretionary Response Fund to Te Ora Hou Ōtautahi Inc towards Polyphony 2021.

3. Key Points / Ngā Take Matua

Strategic Alignment / Te Rautaki Tīaroaro

- 3.1 The recommendation is strongly aligned to the Strategic Framework and in particular the strategic priority of resilient communities. It will build a strong sense of communities and allow young people to celebrate their culture.

Decision Making Authority / Te Mana Whakatau

- 3.2 The Community Board has the delegated authority to determine the allocation of the Discretionary Response Fund for each community

3.2.1 Allocations must be consistent with any policies, standards or criteria adopted by the Council

3.2.2 The Fund does not cover:

- Legal challenges or Environment Court challenges against the Council, Council Controlled organisations or Community Board decisions
- Projects or initiatives that change the scope of a Council project or that will lead to ongoing operational costs to the Council (though Community Boards can recommend to the Council that it consider a grant for this purpose).

Assessment of Significance and Engagement / Te Aromatawai Whakahirahira

- 3.3 The decisions in this report are of low significance in relation to the Christchurch City Council's Significance and Engagement Policy.
- 3.4 The level of significance was determined by the number of people affected and/or with an interest.
- 3.5 Due to the assessment of low significance, no further community engagement and consultation is required.

Discussion / Kōrerorero

- 3.6 At the time of writing, the balance of the 2020-21 Discretionary Response Fund is as below.

Total Budget 2020/21	Granted To Date	Available for allocation	Balance If Staff Recommendation adopted
\$108,497	\$65,196	\$43,310	\$38,310

- 3.7 Based on the current Discretionary Response Fund criteria, the applications listed above are eligible for funding.
- 3.8 The attached Decision Matrix provides detailed information for the applications. This includes organisational details, project details, financial information and a staff assessment.

Attachments / Ngā Tāpirihanga

No.	Title	Page
A A	Waipapa/Papanui-Innes Decision Matrix 2020-21 DRF - Te Ora Hou Ōtautahi Inc - Polyphony 2021	59

Confirmation of Statutory Compliance / Te Whakatūtutanga ā-Ture

Compliance with Statutory Decision-making Requirements (ss 76 - 81 Local Government Act 2002).

(a) This report contains:

- (i) sufficient information about all reasonably practicable options identified and assessed in terms of their advantages and disadvantages; and
- (ii) adequate consideration of the views and preferences of affected and interested persons bearing in mind any proposed or previous community engagement.

(b) The information reflects the level of significance of the matters covered by the report, as determined in accordance with the Council's significance and engagement policy.

Signatories / Ngā Kaiwaitohu

Author	Stacey Holbrough - Community Development Advisor
Approved By	Matthew McLintock - Manager Community Governance Team

2020/21 DRF PAPANUI-INNES DECISION MATRIX

Priority Rating

One	Meets all eligibility criteria and contributes significantly to Funding Outcomes and Priorities. Highly recommended for funding.
Two	Meets all eligibility criteria and contributes to Funding Outcomes and Priorities. Recommended for funding.
Three	Meets all eligibility criteria and contributes to Funding Outcomes and Priorities but to a lesser extent than Priority 2 applications. Not recommended for funding.
Four	Meets all eligibility criteria and has minimum contribution to Funding Outcomes and Priorities / Insufficient information provided by applicant (in application and after request from Advisor) / Other funding sources more appropriate. Not recommended for funding.

00063082	Organisation Name Te Ora Hou Otautahi Inc	Name and Description Polyphony 2021 Te Ora Hou (TOH) is a faith-based Maori youth and community development organisation committed to the holistic development of young people, their whanau and communities. Funding is sought for Polyphony 2021.	Funding History 2020/21 - \$20,000 (Wages for their youth work services coordinator) SCF PI 2020/21 - \$9,000 (Youth work coordinator and Kaiawhina wages) SCF FWH 2019/20 - \$17,500 (Te Ora Hou Youth Development Year 3 of 3) SCF FWH 2019/20 - \$30,000 (Youth Work Co-ordinator Year 2 of 2) SCF PI 2018/19 - \$30,000 (Youth Work Co-ordinator Year 1 of 2) SCF PI 2018/19 - \$17,500 (Te Ora Hou Youth Development Year 2 of 3) SCF FWH Other Sources of Funding Requested funding will be used for the exhibition component. TOH will fund the remainder through volunteer hours.	Request Budget Total Cost \$10,100 Requested Amount \$ 6,000 59% percentage requested Contribution Sought Towards: Rent Venue Hire - \$1,000 Equipment/Materials - \$5,000	Staff Recommendation \$ 5,000 That the Waipapa/Papanui-Innes Community Board approves a grant of \$5,000 from its 2020-21 Discretionary Response Fund to Te Ora Hou Otautahi Inc towards their equipment and material costs for Polyphony 2021.	Priority 2
----------	---	--	---	---	---	---------------------------------

Organisation Details: Service Base: 77 Windermere Road, Papanui Legal Status: Incorporated Society Established: 2/07/1997 Staff – Paid: 33 Volunteers: 43 Annual Volunteer Hours: 3500 Participants: 600 Target Groups: Children/Youth Networks: NorthWest Collective, Te Ora Hou Aotearoa (and the Network of six regional Centres), Canterbury Youth Workers Collective, Social Service Providers of Aotearoa, Praxis, 24/7 YW, Runaki ki Otautahi, NZ Council of Social Services, Northcote Stakeholders Organisation Description/Objectives: Te Ora Hou aim to build resilient young people, whanau and communities (with a particular focus on Maori and Pasifika) by facilitating relationship-based projects which positively contribute to the needs, concerns and wellbeing of the most vulnerable. Their expertise is in supporting rangatahi and whanau to navigate the journey from adolescence into adulthood. Ancillary services are focused on education and health, and support and empower young people and their whanau to improve their social wellbeing.	Alignment with Council Strategies and Policies <ul style="list-style-type: none"> Strengthening Communities Strategy Youth Strategy Alignment with Council Funding Outcomes <ul style="list-style-type: none"> Enhance community and neighbourhood safety Provide community based programmes Reduce or overcome barriers Outcomes that will be achieved through this project To identify and work with a group of five young people to come together to facilitate Polyphony 2021. To identify and work alongside a group 80+ rangatahi (youth) to be able to conceptualise, produce and present verbal and visual (Spoken word, Photography and Art) mediums demonstrating their voice, thoughts, feelings and perspectives on what it means to mean urban Maori and Pasifika rangatahi in Otautahi. To provide and run an exhibition that celebrates the voices and provides a platform to engage with our wider community to whakarongo (listen) to the worlds of rangatahi in a raw and real way. How Will Participants Be Better Off? The primary measure is "can our young people tell stories of growth?". This success means young people can identify their story of what has changed, how they have grown, developed, been challenged, faced failure and success, their journey of identity and understanding and then be able to share it in their language to those who they choose to entrust it with. This story will be captured through visual or spoken mediums. Will know that the project is successful by achieving the goals outlined above. Will measure this by: 1) Capturing feedback from participants (reflection, debrief etc) that will focus on what development change (growth) took place as a result of this project. 2) Developing a detailed project management plan that results in running the event on time and on budget with rangatahi.	Staff Assessment Te Ora Hou Otautahi has 30 years of experience specifically working with urban Maori young people in Otautahi. They have developed indigenous models of youth and community development through research and practice, specifically drawing on both current and traditional knowledge/research aligned with international best practice. Polyphony has been running in both Papanui-Innes and Fendalton-Waimairi-Harewood for several years. Each year TOH has grown and increased rangatahi (youth) engagement, participation and involvement in the planning, and organising of this event. Polyphony 2021 has three components: 1) Bring together mentors to work alongside Whakapakari Rangatahi (youth leaders) to design and project manage Polyphony 2021. Whakapakari rangatahi will also be able to participate in this project. They will be tasked with finding venues, marketing etc. and gain valuable experience and insight into event and group work. 2) Identifying, coach and mentor a group of rangatahi (from all local schools) over Term 2, to produce and present pieces of work that captures their thoughts, feelings and perspectives on the urban environment and world they live in. This will include workshops and tutorials with practitioners who have expertise in Visual, Written and Verbal mediums (Art, photography, spoken word etc.) 3) To run an exhibition based in Papanui over three days and two nights. The first night is an intimate event for rangatahi and whanau. The second is for the wider community to whakarongo (listen) and tautoko (support) the participants, hear their voice first hand and be able to respond in ways that acknowledges the reality of their past, present and future worlds. Due to Polyphony success, increasing numbers of rangatahi participating and the benefit and empowerment of young people who either share their voice and/or involved on the planning of Polyphony staff have recommended an increase in funding. Polyphony 2021 will allow young people living in Papanui to continue to build a strong sense of community, celebrate their identity and culture and have their voices be listened to and heard by their whanau, peers, school and community.
---	--	---

13. Papanui-Innes Community Board Submissions Committee Minutes - 17 March 2021

Reference / Te Tohutoro: 21/498359

Report of / Te Pou Aidan Kimberley – Community Board Advisor

Matua: Aidan.Kimberley@ccc.govt.nz

General Manager / Mary Richardson – General Manager Citizens and Community

Pouwhakarae: Mary.Richardson@ccc.govt.nz

1. Purpose of Report / Te Pūtake Pūrongo

The Papanui-Innes Community Board Submissions Committee held a meeting on 17 March 2021 and is circulating the Minutes recorded to the Waipapa/Papanui-Innes Community Board for its information.

2. Recommendation to Waipapa/Papanui-Innes Community Board

That the Waipapa/Papanui-Innes Community Board receives and confirms the Minutes from the Papanui-Innes Community Board Submissions Committee meeting held 17 March 2021.

Attachments / Ngā Tāpirihanga

No.	Title	Page
A	Minutes Papanui-Innes Community Board Submissions Committee - 17 March 2021	62

Signatories / Ngā Kaiwaitohu

Author	Lyssa Aves - Governance Support Officer
--------	---

**Waipapa
Papanui-Innes Community Board Submissions
Committee
OPEN MINUTES**

Date: Wednesday 17 March 2021 – Monday 12 April 2021
Time: 10.30am
Venue: The Board Room, Papanui Service Centre,
5 Restell Street, Papanui

Present

Chairperson	Emma Norrish
Deputy Chairperson	Simon Britten
Members	Ali Jones Emma Twaddell

17 March 2021

Elizabeth Hovell
Manager Community Governance, Papanui-Innes
941 8637
Elizabeth.Hovell@ccc.govt.nz
www.ccc.govt.nz

Part A Matters Requiring a Council Decision

Part B Reports for Information

Part C Decisions Under Delegation

1. Apologies / Ngā Whakapāha

Committee Decision

There were no apologies.

2. Declarations of Interest / Ngā Whakapuaki Aronga

There were no declarations of interest recorded.

Ali Jones left the meeting at 10:47 a.m. during the discussion of item 5.

5. Draft Development Contributions Policy 2021

Staff Recommendations

That the Waipapa/Papanui-Innes Community Board Submissions Committee:

1. Considers making a submission on behalf of the Board to the Council on the Draft Development Contributions Policy 2021.

Committee Resolved PCBSC/2021/00003

That the Waipapa/Papanui-Innes Community Board Submissions Committee:

1. Adopts the following as the Waipapa/Papanui-Innes Community Board's submission to the Council on the Draft Development Contributions Policy 2021 and requests to speak to the Hearings Panel; making a submission on behalf of the Board to the Council on the Draft Development Contributions Policy 2021:

"The Waipapa/Papanui-Innes Community Board thanks the Council for the opportunity to submit on the draft Development Contributions Policy 2021.

The Board supports the draft policy in its entirety. It is fair that developers pay a share of the cost of providing infrastructure to service growth. The use of catchments in the proposed policy is a more fair and equitable way of collecting Development Contributions and the Board recommends that the Council proceeds with this.

The Board believes Development Contributions are an appropriate way to fund improved neighbourhood park facilities in residential areas experiencing development growth."

Emma Norrish/Simon Britten

Carried

Emma Twaddell requested that her vote against the resolution be recorded.

6. Draft Climate Change Strategy 2021

Staff Recommendations

That the Waipapa/Papanui-Innes Community Board Submissions Committee:

1. Considers making a submission on behalf of the Board to the Council on the Draft Climate Change Strategy 2021.

Committee Resolved PCBSC/2021/00004

That the Waipapa/Papanui-Innes Community Board Submissions Committee:

1. Adopts the following as the Waipapa/Papanui-Innes Community Board's submission to the Council on the Draft Climate Change Strategy 2021 and requests to speak to the Hearings Panel:

"The Waipapa/Papanui-Innes Community Board thanks the Council for the opportunity to submit on the draft Climate Change Strategy 2021.

The Board generally supports the proposal but has some concerns.

The Board believes that the Council needs to be very ambitious and show strong leadership on reducing carbon emissions. The target of 2030 for the Council to achieve net carbon neutrality in its operations does not appear very ambitious when we are already seeing other major New Zealand corporations achieving carbon neutral status, and the Board encourages the Council to bring this target forward.

The Board appreciates that goal three (proactive climate planning) implies that climate change education will occur along with continuing to raise awareness of the issue, however the Board would like to see public education emphasised further in the strategy.

The Board would appreciate more detail on how the Strategy will be implemented, including associated risks and challenges.

The Board supports the strategy overall and commends the Council for making the strategy concise and easy for a layperson to understand. The Board particularly appreciates the 'next step for Council' section in each programme. Breaking such a significant Strategy into manageable, less overwhelming steps is more likely to encourage people to participate and support it."

Emma Twaddell/Emma Norrish

Carried

At 11:05am the Chair announced that the meeting would adjourn and reconvene at 9am on Wednesday 24 March.

The meeting reconvened at 9am on Wednesday 24 March with Emma Norrish and Simon Britten present.

The Committee proceeded to discuss item 3 but did not pass any formal resolutions during this session.

Emma Twaddell returned to the meeting at 9:34am.

At 10:02am the Chair announced that the meeting would adjourn and reconvene at 1pm on Monday 12 April 2021.

The meeting reconvened at 1pm on Monday 12 April 2021 with Emma Norrish, Simon Britten and Emma Twaddell present in the room and Ali Jones attending via audio link.

4. Draft Long Term Plan 2021-2031

Staff Recommendations

That the Papanui-Innes Community Board Submissions Committee:

1. Considers making a submission on behalf of the Board to the Council on the Draft Long Term Plan 2021-2031.

Committee Resolved PCBSC/2021/00005

That the Waipapa/Papanui-Innes Community Board Submissions Committee:

1. Adopts the submission set out in Attachment A to these minutes as the Waipapa/Papanui-Innes Community Board submission to the Council on the Draft Long Term Plan 2021-2031 and requests to speak at the Hearings.

Emma Norrish/Simon Britten

Carried

Attachments

- A Papanui-Innes Community - Final Submission to Long Term Plan 2021-31

3. Representation Review - Initial Proposal

Staff Recommendations

That the Waipapa/Papanui-Innes Community Board Submissions Committee:

1. Considers making a submission on behalf of the Board to the Council on the Representation Review initial proposal.

Committee Decision

That the Papanui-Innes Community Board Submissions Committee:

1. Adopts the following as the Waipapa/Papanui-Innes Community Board's submission to the Council on the Representation Review Initial Proposal and requests to speak to the Hearings Panel:

Question	Feedback
Overall, do you think you and/or your community of interest will be fairly represented by the proposed number of councillors, wards and community boards?	<p>Yes.</p> <p>Comments:</p> <ul style="list-style-type: none">• The Board agrees with the proposal to reduce urban community boards from six to five and support the proposed for a Papanui-Innes-Central Community Board.

<p>Overall, do you think the proposed boundaries will reflect your community and/or communities of interest?</p>	<p>Yes.</p> <p>Comments:</p> <ul style="list-style-type: none"> • The Board proposes retaining Redwood Springs in Papanui Ward, and managing the population balance with Innes Ward by adjusting the southeast boundary as required. There is a very clear natural boundary with the Styx River, making Redwood Springs very clearly a part of Papanui Ward. We believe that Papanui is the community of interest for residents of Redwood Springs, noting that access to and from Redwood Springs is via the Papanui Ward. • The Board supports the proposed changes to the northern boundary of Innes Ward with Coastal taking in part of the rural area (Chaney's and Kainga). • The Board supports the boundary changes in the Richmond area, noting that more of Richmond will sit with the Innes Ward and as a suburb Richmond will be covered by two community boards rather than the current three. • The Board also notes that St Albans, while still split between four wards will now also be covered by two community boards rather than the current three.
<p>Do you have any other comments about the initial proposal?</p>	<p>Comments:</p> <ul style="list-style-type: none"> • The Board commends the way the initial proposal has minimised the changes overall, which in turn provides more stability for the communities of Christchurch.

Meeting concluded at 3.38pm on Monday 12 April 2021.

CONFIRMED THIS 7TH DAY OF MAY 2021.

EMMA NORRISH
CHAIRPERSON

14. Elected Members' Information Exchange / Te Whakawhiti Whakaaro o Te Kāhui Amorangi

This item provides an opportunity for Board Members to update each other on recent events and/or issues of relevance and interest to the Board.