

**Te Pātaka o Rākaihautū**  
**Banks Peninsula Community Board**  
**AGENDA**

---

**Notice of Meeting:**

An ordinary meeting of the Te Pātaka o Rākaihautū/Banks Peninsula Community Board will be held on:

**Date:** Monday 3 May 2021  
**Time:** 10am  
**Venue:** Little River Boardroom  
4238 Christchurch-Akaroa Road, Little River

---

**Membership**

Chairperson	Tori Peden
Deputy Chairperson	Tyrone Fields
Members	Reuben Davidson
	Nigel Harrison
	Howard Needham
	Jamie Stewart
	Andrew Turner
	Scott Winter

---

**23 April 2021**

Penelope Goldstone  
Manager Community Governance, Banks Peninsula  
941 5689  
penelope.goldstone@ccc.govt.nz  
[www.ccc.govt.nz](http://www.ccc.govt.nz)

Note: The reports contained within this agenda are for consideration and should not be construed as Council policy unless and until adopted. If you require further information relating to any reports, please contact the person named on the report.

**To view copies of Agendas and Minutes, visit:**

<https://www.ccc.govt.nz/the-council/meetings-agendas-and-minutes/>



## Ōtautahi-Christchurch is a city of opportunity for all

Open to new ideas, new people and new ways of doing things – a city where anything is possible

### Principles

Being open, transparent and democratically accountable	Promoting equity, valuing diversity and fostering inclusion	Taking an inter-generational approach to sustainable development, prioritising the social, economic and cultural wellbeing of people and communities and the quality of the environment, now and into the future	Building on the relationship with Te Rūnanga o Ngāi Tahu and the Te Hononga-Council Papatipu Rūnanga partnership, reflecting mutual understanding and respect	Ensuring the diversity and interests of our communities across the city and the district are reflected in decision-making	Actively collaborating and co-operating with other local, regional and national organisations
--	---	--	---	---	---

### Community Outcomes

<b>Resilient communities</b> Strong sense of community Active participation in civic life Safe and healthy communities Celebration of our identity through arts, culture, heritage, sport and recreation Valuing the voices of all cultures and ages (including children)	<b>Liveable city</b> Vibrant and thriving city centre Sustainable suburban and rural centres A well connected and accessible city promoting active and public transport Sufficient supply of, and access to, a range of housing 21st century garden city we are proud to live in	<b>Healthy environment</b> Healthy water bodies High quality drinking water Unique landscapes and indigenous biodiversity are valued and stewardship exercised Sustainable use of resources and minimising waste	<b>Prosperous economy</b> Great place for people, business and investment An inclusive, equitable economy with broad-based prosperity for all A productive, adaptive and resilient economic base Modern and robust city infrastructure and community facilities
--	---	--	---

### Strategic Priorities

Enabling active and connected communities to own their future	Meeting the challenge of climate change through every means available	Ensuring a high quality drinking water supply that is safe and sustainable	Accelerating the momentum the city needs	Ensuring rates are affordable and sustainable
---	---	--	--	---

### Ensuring we get core business done while delivering on our Strategic Priorities and achieving our Community Outcomes

Engagement with the community and partners	Strategies, Plans and Partnerships	Long Term Plan and Annual Plan	Our service delivery approach	Monitoring and reporting on our progress
--	------------------------------------	--------------------------------	-------------------------------	--

Part A	Matters Requiring a Council Decision
Part B	Reports for Information
Part C	Decisions Under Delegation

## TABLE OF CONTENTS

Karakia Timatanga .....	4
C 1. Apologies / Ngā Whakapāha.....	4
B 2. Declarations of Interest / Ngā Whakapuaki Aronga .....	4
C 3. Confirmation of Previous Minutes / Te Whakaāe o te hui o mua .....	4
B 4. Public Forum / Te Huinga Whānui.....	4
B 5. Deputations by Appointment / Ngā Huinga Whakaritenga .....	4
B 6. Presentation of Petitions / Ngā Pākikitanga.....	4
B 7. Reserve Management Committee Meeting Minutes .....	17

## STAFF REPORTS

C 8. 281 Beach Road Akaroa (The Red House, Takapuneke) - Declare and Classify Land as Historic Reserve .....	41
B 9. Elected Members' Information Exchange / Te Whakawhiti Whakaaro o Te Kāhui Amorangi.....	94

Karakia Whakamutunga

## Karakia Timatanga

### 1. Apologies / Ngā Whakapāha

At the close of the agenda no apologies had been received.

### 2. Declarations of Interest / Ngā Whakapuaki Aronga

Members are reminded of the need to be vigilant and to stand aside from decision making when a conflict arises between their role as an elected representative and any private or other external interest they might have.

### 3. Confirmation of Previous Minutes / Te Whakaāe o te hui o mua

That the minutes of the Te Pātaka o Rākaihautū/Banks Peninsula Community Board meeting held on [Monday, 12 April 2021](#) be confirmed (refer page 5).

### 4. Public Forum / Te Huinga Whānui

A period of up to 30 minutes will be available for people to speak for up to five minutes on any issue that is not the subject of a separate hearings process.

### 5. Deputations by Appointment / Ngā Huinga Whakaritenga

Deputations may be heard on a matter or matters covered by a report on this agenda and approved by the Chairperson.

There were no deputations by appointment at the time the agenda was prepared.

### 6. Presentation of Petitions / Ngā Pākikitanga

There were no petitions received at the time the agenda was prepared.



---

## Te Pātaka o Rākaihautū Banks Peninsula Community Board OPEN MINUTES

---

**Date:** Monday 12 April 2021  
**Time:** 10.04am  
**Venue:** Lyttelton Community Boardroom,  
25 Canterbury Street, Lyttelton

---

**Present**

Chairperson	Tori Peden
Deputy Chairperson	Tyrone Fields
Members	Reuben Davidson
	Nigel Harrison
	Howard Needham
	Andrew Turner
	Scott Winter

---

12 April 2021

Penelope Goldstone  
Manager Community Governance, Banks Peninsula  
941 5689  
penelope.goldstone@ccc.govt.nz  
[www.ccc.govt.nz](http://www.ccc.govt.nz)

To view copies of Agendas and Minutes, visit:  
[www.ccc.govt.nz/the-council/meetings-agendas-and-minutes/](http://www.ccc.govt.nz/the-council/meetings-agendas-and-minutes/)

**Part A**      **Matters Requiring a Council Decision**

**Part B**      **Reports for Information**

**Part C**      **Decisions Under Delegation**

**Karakia Timatanga:** Tyrone Fields

The agenda was dealt with in the following order.

## **1. Apologies / Ngā Whakapāha**

**Part C**

**Community Board Resolved BKCB/2021/00029**

That the apologies received from Jamie Stewart for absence and Scott Winter for lateness be accepted.

Tyrone Fields/Reuben Davidson

**Carried**

## **2. Declarations of Interest / Ngā Whakapuaki Aronga**

**Part B**

There were no declarations of interest recorded.

## **3. Confirmation of Previous Minutes / Te Whakaāe o te hui o mua**

**Part C**

**Community Board Resolved BKCB/2021/00030**

That the minutes of the Te Pātaka o Rākaihautū/Banks Peninsula Community Board meeting held on Monday, 15 March 2021 be confirmed.

Tyrone Fields/Nigel Harrison

**Carried**

## **4. Public Forum / Te Huīnga Whānui**

**Part B**

### **4.1 Hilda Frame Reserve - Te Kura o Ōhinetahi - Governors Bay School**

Pupils from the Te Kura o Ōhinetahi - Governors Bay School spoke to the Board to ask if they can erect a sign in memory of Hilda Frame who gifted a reserve, opposite the school, to the Council. The school can assist with the signage through funding and volunteer labour.

The Board noted that it would be good to have the reserve name formalised as the Hilda Frame Reserve, as it was currently called Reserve 4673.

**Part B**

That the Te Pātaka o Rākaihautū/Banks Peninsula Community Board:

1. Request that staff bring information to the Board on interpretive signage and the formalisation of the name for Reserve 4673 as the Hilda Frame Reserve.
2. Thanks Te Kura o Ōhinetai - Governors Bay School pupils, for their presentation.

#### Attachments

A Governors Bay School - Hilda Frame Public Forum Handout

#### 4.2 Just Dirt Trust – Selwyn Eagle

Selwyn Eagle, Facilitator of the Just Dirt Trust, spoke to the Board to give an update on the activities of the Trust. The Trust's mission is to encourage everyone in New Zealand to have a vegetable garden.

#### Part B

That the Te Pātaka o Rākaihautū/Banks Peninsula Community Board:

1. Thanks Selwyn for his presentation.

Scott Winter entered the meeting at 10.14am during Item 4.2.

#### 4.3 Garden of Tane Reserve Management Committee (RMC)

This public forum was postponed until a future date.

#### 4.4 Little River School

Frankie Bakker showed the Board a mural design for the new tennis court wall at Awa-iti Domain and outlined the schedule for completion of the mural. Frankie involved pupils at Little River School, teaching them the design process for a mural and incorporating their ideas into the final design.

#### Part B

That the Te Pātaka o Rākaihautū/Banks Peninsula Community Board:

1. Thanks Frankie for her presentation.

#### Attachments

A Frankie Bakker - Little River School Public Forum Presentation

#### 4.5 Diamond Harbour Land Disposal – Richard Suggate

Richard Suggate, speaking on behalf of Diamond Harbour Community Association, spoke to the Board about the fast track disposal of land in Diamond Harbour through the Long Term Plan (LTP) process. He referred specifically to two parcels of land, where the community has spent time and effort developing walking tracks and replanting with natives.

The Association wanted the disposal of the land to be considered in a separate process rather than as part of the LTP and for all relevant issues to be taken into account during that process.

#### Part B

That the Te Pātaka o Rākaihautū/Banks Peninsula Community Board:

1. Notes that the land disposal process is something the Board will be considering as part of its Long Term Plan submission.
2. Thanks Richard for his presentation.

#### Attachments

A Richard Suggate - Diamond Harbour Land Disposal Public Forum Presentation

#### 4.6 Land Drainage Rate - Pam Richardson

Pam Richardson, farmer, spoke to the Board regarding the proposed Land Drainage Rate and its implications for rural ratepayers. She outlined the financial impacts to properties that would receive no direct benefit from land drainage projects. Pam requested an opportunity to work through alternatives proposals with the Council.

It was also noted that affected property owners had only just received notification about the rate, which left little time to research and compose a submission to the LTP.

#### Part B

That the Te Pātaka o Rākaihautū/Banks Peninsula Community Board:

1. Agree to consider the Land Drainage Rate proposal as part of its Long Term Plan submission.
2. Thanks Pam for her presentation.

#### Attachments

A Pam Richardson - Land Drainage Public Forum Handout

#### 4.7 Halswell River Rating District Liaison Committee - Ross McFarlane and Pam Richardson

Ross McFarlane, upper catchments elected representative, and Pam Richardson, Community Board liaison person on the Committee, spoke to the Board on the effect of the proposed Land Drainage Rate on rural ratepayers, especially those in the Halswell River Rating area, who already paid a land drainage rate. Ross noted that the Halswell River rating area had existed since 1887 and he believed it was inequitable for Council to charge a rate on properties in that area without any provision of service.

#### Part B

That the Te Pātaka o Rākaihautū/Banks Peninsula Community Board:

1. Agree to consider the Land Drainage Rate proposal as part of its Long Term Plan submission..
2. Thanks Ross and Pam for their presentation.

#### Attachments

A Pam Richardson and Ross McFarlane - Halswell River Rating District Liaison Committee Public Forum Presentation

## 5. Deputations by Appointment / Ngā Huinga Whakaritenga

#### Part B

**5.1 Murray Smith – 62 Archdalls Road**

Murray Smith spoke as the property owner, regarding the report on 62 Archdalls Road, indicating that he was happy with the Officer Recommendation.

Refer Item 11 of these minutes.

**Part B**

That the Te Pātaka o Rākaihautū/Banks Peninsula Community Board:

1. Thanks Murray for his deputation.

**6. Presentation of Petitions / Ngā Pākikitanga**

**Part B**

**6.1 Joshua Merriam - Improve the Access Tracks for Urumau Reserve**

Joshua Merriam presented a petition regarding improving access tracks in Urumau Reserve. He explained that the petition was about wanting to upgrade current tracks, rather than creating new ones, with a goal to making it safer and easier to use the reserve with more sustainable paths for walkers and riders.

The petition read:

*We, the undersigned, wish to see access into Urumau Reserve improved according to the 2018 Urumau Development Plan (UDP).*

*The UDP shows shared use tracks from Foster Terrace, (1.) up the existing 'Zig Zags', across to the 4wd vehicle access via (2.) 'formed track' and logically continuing to connect with the Urumau traverse track above (3.)*

*We first ask that the existing 'formed track' (section 2.) be formally approved and made fit for purpose. Improvement would then be completed with construction of (section 3.) the shared use track continuing above. This allows visitors a more enjoyable route into the reserve at a sustainable grade and among the regenerating natives. All users would benefit from the completion of this new entrance route.*

*We ask that the board approve this staged plan and facilitate its completion in a timely manner.*

**Community Board Resolved BKCB/2021/00031**

**Part B**

That the Te Pātaka o Rākaihautū/Banks Peninsula Community Board:

1. Receive the petition as presented.
2. Note that the Board has already requested staff action in regard to the tracks in Urumau Reserve.

Andrew Turner/Tyrone Fields

**Carried**

## 11. 62 Archdalls Road, Duvauchelle - Structures on Roads Proposal

### Board Comment

The Board had originally considered a report on this matter at its meeting of Monday 7 December 2020. Council had subsequently asked staff to bring this matter back to the Board after incorporating further information into the report.

### Community Board Decided BKCB/2021/00032

**(Original Officer recommendations accepted without change.)**

#### Part A

That the Te Pātaka o Rākaihautū/Banks Peninsula Community Board recommends that the Council:

1. Approve the application for a licence over unformed legal road adjoining 62 Archdalls Road, Duvauchelle to legitimise the legacy encroachment of part of the dwelling as shown in Attachment A.
2. Grant delegated authority to the Property Consultancy Manager to negotiate and enter into the Deed of Licence on Council's standard terms and conditions including but not limited to:
  - a. A term of 35 years less one day.
  - b. A rental of \$150 p.a. plus GST.
  - c. The requirement for the licensee to hold public liability insurance of at least \$2m.
  - d. The public's right of access must not be obstructed.
  - e. Reassessment of the licence if the structure is reconstructed.
  - f. Council will not be responsible to repair or retain the structure in the event of coastal cliff erosion or seismic activity.

Scott Winter/Nigel Harrison

**Carried**

## 7. Reserve Management Committee Meeting Minutes

### Community Board Resolved BKCB/2021/00033

**(Original Officer recommendations accepted without change.)**

#### Part B

That the Banks Peninsula Community Board:

1. Receive the minutes of the following Reserve Management Committees:
  - Duvauchelle Reserve Management Committee – 15 February 2021
  - Garden of Tane Reserve Management Committee – 10 November 2020
  - Lyttelton Reserves Management Committee – 14 December 2020



- Lyttelton Reserves Management Committee – 8 February 2021
  - Pigeon Bay Reserve Management Committee – 18 February 2021
  - Stanley Park Reserve Management Committee – 4 March 2021
2. Approve the appointment of Micha Engelmann as a member of the Lyttelton Reserve Management Committee.

Reuben Davidson/Andrew Turner

Carried

## 8. Head to Head Walkway Working Party

### Community Board Resolved BKCB/2021/00034

(Original Officer recommendations accepted without change.)

#### Part B

That the Banks Peninsula Community Board:

1. Receive the notes of the Head to Head Walkway Working Party meeting on 22 February 2021.

Scott Winter/Tyrone Fields

Carried

## 9. Orton Bradley Park Board - Minutes 2 November 2020

### Community Board Resolved BKCB/2021/00035

(Original Officer recommendations accepted without change.)

#### Part B

That the Banks Peninsula Community Board:

1. Receive the minutes of the Orton Bradley Park Board meeting held on 2 November 2020.

Scott Winter/Howard Needham

Carried

## 10. Akaroa Museum Advisory Committee

### Board Comment

The Board noted that the graph showing visitor numbers indicated relatively strong numbers still flowing through the museum with a large number being school children. It was agreed that education and heritage tourism is destined to grow on the Peninsula and this should be considered by the Board in its Long Term Plan submission and its Destination Management Planning.

**Community Board Resolved BKCB/2021/00036**

(Original Officer recommendations accepted without change.)

#### Part B

That the Banks Peninsula Community Board:

1. Receive the notes of the Akaroa Museum Advisory Committee meeting on 24 March 2021.

Nigel Harrison/Scott Winter

Carried

## 12. Head to Head Walkway Charteris Bay route options

### Officer Recommendations / Ngā Tūtohu

That the Te Pātaka o Rākaihautū/Banks Peninsula Community Board:

1. Approve a new section of the Head to Head Walkway within the boundary of Orton Bradley Park (*refer to attachment A – Head to Head Walkway - Andersons Road to Orton Bradley Entrance*) as the preferred route between the Andersons Road/Marine Drive southern intersection and the entrance of Orton Bradley Park.
2. Defer a decision on the route options in Charteris Bay between the northern and southern intersections of Andersons Road/ Marine Drive.

### Community Board Resolved BKCB/2021/00037

#### Part C

That the Te Pātaka o Rākaihautū/Banks Peninsula Community Board:

1. Approve a new section of the Head to Head Walkway within the boundary of Orton Bradley Park (*refer to attachment A on the agenda for this meeting – Head to Head Walkway - Andersons Road to Orton Bradley Entrance*) as the preferred route between the Andersons Road/Marine Drive southern intersection and the entrance of Orton Bradley Park.
2. Request that further information be brought back to the Board on the preferred route in Charteris Bay between the northern and southern intersections of Andersons Road/ Marine Drive, including consultation, cultural considerations, funding, climate change adaptation and planning, along with timing and sequencing.
3. Defer a final decision on the preferred route in Charteris Bay between the northern and southern intersections of Andersons Road/ Marine Drive.

Scott Winter/Andrew Turner

Carried

The meeting adjourned at 11.33am and reconvened at 11.45am.

## 13. Banks Peninsula Discretionary Response Fund - ANZAC Services 2021

### Community Board Recommendation

(Original Officer recommendations accepted without change.)

#### Part C

That the Te Pātaka o Rākaihautū/Banks Peninsula Community Board:

Approves a grant of \$2,000 from its 2020/21 Discretionary Response Fund towards the Banks Peninsula ANZAC Day Services 2021.

#### 14. Discretionary Response Fund - Pigeon Bay Settlers' Hall Centennial Community Board Resolved BKCB/2021/00038

(Original Officer recommendations accepted without change.)

##### Part C

That the Te Pātaka o Rākaihautū/Banks Peninsula Community Board:

1. Approves a grant of \$2,000 from its 2020-21 Discretionary Response Fund to Pigeon Bay Settler' Hall towards marquee hire for the Pigeon Bay Settlers' Hall Centennial.

Tori Peden/Scott Winter

Carried

#### 15. Long Term Plan Submission - Reserve Management Committee Input Officer Recommendations / Ngā Tūtohu

That the Te Pātaka o Rākaihautū/Banks Peninsula Community Board:

1. Receive the information in the report.

**Community Board Resolved BKCB/2021/00039**

##### Part C

That the Te Pātaka o Rākaihautū/Banks Peninsula Community Board:

1. Receive the information in the report.
2. Receive the tabled submissions of the Diamond Harbour and Garden of Tane Reserve Management Committees.

Andrew Turner/Scott Winter

Carried

##### Attachments

- A Diamond Harbour Reserve Management Committee - Submission to Long Term Plan 2021
- B Garden of Tane Reserve Management Committee - Submission to Long Term Plan 2021

#### 16. Te Pātaka o Rākaihautū/Banks Peninsula Community Board Area Report - April 2021

**Officer Recommendations / Ngā Tūtohu**

That the Te Pātaka o Rākaihautū/Banks Peninsula Community Board:

1. Receive the Te Pātaka o Rākaihautū/Banks Peninsula Community Board Area Report for April 2021.

**Community Board Resolved BKCB/2021/00040**

## Part B

That the Te Pātaka o Rākaihautū/Banks Peninsula Community Board:

1. Receive the Te Pātaka o Rākaihautū/Banks Peninsula Community Board Area Report for April 2021.
2. Resolve that it will make submissions on:
  - Christchurch City Council Long Term Plan
  - Development Contributions Policy
  - Environment Canterbury Long Term Plan
  - Representation Review
  - Climate Change Strategy

Tyrone Fields/Scott Winter

Carried

## 17. Elected Members' Information Exchange / Te Whakawhiti Whakaaro o Te Kāhui Amorangi

### Part B

Board members exchanged information on the following items of interest:

- Level of Service response times – road maintenance.
- Diamond Harbour residents requesting a Dog Park.
- Graffiti on Heritage Structures.
- Dyers Pass Road Closure - times inconsistent.
- Akaroa Civic Trust – national reserve status at Takapūneke.
- Akaroa Cemeteries - unveiling of headstones and removal of trees.
- Comte de Paris 180<sup>th</sup> Anniversary – great attendance.
- 20<sup>th</sup> Anniversary of Banks Peninsula Conservation Trust – New Chair – Penny Carnaby.
- Lyttelton Harbour Information Centre changes – new Chair Chris Brown, new Manager Jane Davies.
- Beautification of Fulton Hogan site near Allandale.
- LTP Consultation sessions
- LTP proposed end to Council Customer Services in Lyttelton and Akaroa.
- Wastewater Akaroa – Reference Group Terms of Reference currently under consideration.

- Request for rubbish bins at Allandale and Governors Bay Community Halls – residents can request this through [info@ccc.govt.nz](mailto:info@ccc.govt.nz).
- Eftpos Terminal for events – can be sourced from Project Lyttelton.
- Gebbies Pass parking area – Council currently investigating options.
- Cressy House Trust – offers funding to over 65's for anything they need. Application forms at the Medical Centre and Community House.
- Moepuku Peninsula – Selective tree harvesting and sediment into the harbour.
- Orton Bradley Park – request for letter of support from the Board.
- Community feedback of LTP process is that it is 'overwhelming'.
- Land drainage – residents received letter too late to act for LTP submission.
- Waka Kotahi - NZTA – Board want to continue conversation on coastal inundation.
- Shelterbelt removal - consultation question.

#### **Attachments**

A Orton Bradley Park Letter - Request for Letter of Support

#### **17.1 Cass Bay Fire Risk**

##### **Part B**

That the Te Pātaka o Rākaihautū/Banks Peninsula Community Board:

1. Request information from Orion on what has been done to minimise the fire risk from trees that caused the recent fire in Cass Bay.

#### **17.2 Layby – Dyers Pass Road**

##### **Part B**

That the Te Pātaka o Rākaihautū/Banks Peninsula Community Board:

1. Request information about why curbing was installed, at the layby on the Governors Bay side of Dyers Pass Road, that now prevents large trucks from pulling over.

**Karakia Whakamutunga:** Tyrone Fields

**Meeting concluded at 12.41pm.**

**CONFIRMED THIS 3<sup>rd</sup> DAY OF MAY 2021**

TORI PEDEN  
CHAIRPERSON

Unconfirmed

Item 3 - Minutes of Previous Meeting 12/04/2021



## 7. Reserve Management Committee Meeting Minutes

Reference / Te Tohutoro: 21/378170

Report of / Te Pou

Matua:

Liz Carter, Community Board Advisor, Liz.Carter@ccc.govt.nz

General Manager /

Pouwhakarae:

Mary Richardson, GM Citizens & Community,

Mary.Richardson@ccc.govt.nz

### 1. Purpose of Report / Te Pūtake Pūrongo

1.1 Minutes have been received from the following Reserve Management Committees:

Name	Subject
Cass Bay Reserve Management Committee	3 February 2021 Unconfirmed
Diamond Harbour Reserve Management Committee	22 March 2021 Unconfirmed
Lyttelton Reserves Management Committee	22 March 2021 Unconfirmed
Okains Bay Reserves Management Committee	13 April 2021 Unconfirmed

1.2 A progress report on the Urumau Reserve Development Plan has also been received and is attached at **Attachment E**.

### 2. Officer Recommendations / Ngā Tūtohu

That the Banks Peninsula Community Board:

1. Receive the minutes of the following Reserve Management Committees:
  - Cass Bay Reserve Management Committee – 3 February 2021
  - Diamond Harbour Reserve Management Committee – 22 March 2021
  - Lyttelton Reserve Management Committee – 22 March 2021
  - Okains Bay Reserve Management Committee – 13 April 2021
2. Approve the appointment of Rewi Couch and Joshua Merriam to the Lyttelton Reserve Management Committee.
3. Receive from the Lyttelton Reserve Management Committee, the Progress Report on the Urumau Reserve Development Plan dated 1 December 2020 and forward the report to staff for information and comment back to the Board.
4. Thank the Lyttelton Reserve Management Committee for providing the progress report on the Urumau Reserve Development Plan.

## Attachments

No.	Title	Page
A <a href="#">↓</a>	Cass Bay Reserve Management Committee Unconfirmed Minutes - 3 February 2021	19
B <a href="#">↓</a>	Diamond Harbour Reserve Management Committee Unconfirmed Minutes - 22 March 2021	22
C <a href="#">↓</a>	Lyttelton Reserves Management Committee Unconfirmed Minutes - 22 March 2021	24
D <a href="#">↓</a>	Okains Bay Reserve Management Committee 13 April 2021 Minutes	32
E <a href="#">↓</a>	Lyttelton Reserve Management Committee - Progress Report on Urumau Development Plan to 1 December 2020	36

## Item 7

**Minutes of Meeting of the Cass Bay Reserves Management Committee (RMC)**

**Wednesday 3<sup>rd</sup> February 2021 7.30pm, at the Steadfast Wardroom.**

**PRESENT:**

Jenny Healey- Chair  
Tracey Adams- Secretary  
Brian Downey- Committee Member  
Chris Nee- Navy Cadets  
David Tayler- Cass Bay  
Liz Hales- Committee Member  
Wendy Everingham- Committee Member  
Jeremy Webb- Committee Member  
Paul Devlin- CCC Park Rangers  
Felix Dawson  
Paul Dahl

**APOLOGIES**

Tracy Prince-Navy Cadets  
Tyrone Fields- Community Board  
Andrew Turner

Action

Points

**MINUTES OF PREVIOUS MEETING (2<sup>nd</sup> December 2020 )**

It was proposed that: **The minutes from the 2<sup>nd</sup> December 2020 meeting be agreed;**  
proposed Liz Hales, seconded Jenny Healey, **CARRIED.**

**Brian declared a conflict of interest in discussing Steadfast nursery.**

**Chris Nee – regarding Steadfast**

**MATTERS ARISING**

**Update on Development Plan-** Felix spoke about a draft to be out by the end of the month. To have a day for community consultation where questions can be raised. The need to organise a special meeting of the Residents Association Committee.

**Whaka Ora Riparian Planting Project-** Paul Dahl from Purau has kindly volunteered his time to carry out work that is needed to supply water to all the areas. In December plants were released. February will see more watering points being installed. 2 taps insitu already and 2 more to be installed. Great water pressure. A 25,000L water tank will be installed at some stage to give a permanent water supply. Paul Devlin and Paul Dahl to discuss further. Paul Devlin CCC wants to fund the 25,000L tank and to have a firefighting fitting attached.

**Survey** done in the meeting asking us what strengths we bring to this committee? Jenny very concerned that she is incredibly busy and going away. Looking to try and take some of the workload off her.

**Watering Roster**-Jenny has organised the pony point watering roster. We need one for Steadfast. Jenny wanting someone to organise the rosters and keep them rolling. Suggested that we need to section out the area for watering, so people take responsibility for one area only. Dave to assist Jenny with setting up the areas to be managed.

**LTP**- RMC has been asked by the Community Board to review goals for the year. Our goals are- 1. To forward the Port Hills Plan, being specific about the Port Hills Plan overall as important but reiterating our constant request for a track to Summit Rd and access to Steadfast. 2. Whaka Ora Riparian Zone planting. 3. Playground upgrade to include accessible equipment/design and a sensory garden. 4. Weed eradication to continue in the area. 5. Fire danger in the area and the need for a fire resilience plan. The need for more workshops and working with FENZ and PARKS and adjoining landowners.

Dave Tayler is concerned about the gorse and broom being combustible and therefore a fire risk for outlying residential areas in Cass bay.

**RMC annual plan 2021 and working bees etc-**

1. Pony Point Track-work/improvement to be continued. Nick Singleton to be consulted by Paul Devlin. Benching to hopefully take place in areas where work most needs to be done, potentially in June.
2. Maintaining and Weeding- Working bees to be organised for the releasing of plants at the Memorial planting, bark for the playground, weed eradication, planting(infill) and releasing in Steadfast.
- 3.

**Meeting Dates 2021- 7<sup>th</sup> April, 2<sup>nd</sup> June, 4<sup>th</sup> Aug, 6<sup>th</sup> Oct, 1<sup>st</sup> Dec**

**Volunteer hours** to go to Liz. Jenny wants a way to track our volunteer hours. Paul Devlin has H&S forms that may help us to keep a record on our working bees.

**Lyttelton RMC**- fire work, track work and seed collecting.

**Naval Cadets**- Shovel ready project money is still available, and they do qualify. March 17<sup>th</sup> the army may be blank firing guns. Residence of Cass Bay to be made aware if this goes ahead.

**NEXT MEETING**

The next meeting is Wednesday 7<sup>th</sup> April, 2021 at 7.30pm in the Wardroom, Steadfast.  
Meeting closed at 9.35pm



**Diamond Harbour Reserve Management Committee - Meeting 22/3/21- Committee Room, Diamond Harbour Hall**

Attendance: Graeme Fraser-Chair, Felix Dawson-Secretary  
Committee - Tom Kuenning, Paul Pritchett, Phil Swallow, Thomas Kulpe  
Apologies: Pete Ozich, Dave Hammond, Fliss Forbes, Scott Winter, Jim Neiman, Robert Golding  
Guests: Richard Suggate, Debby and Graeme Redmond

	Agenda Item	Issue	Resolution	Action
1	Matters arising	Memorial seat to be located on Black Point- provided by April Morel's family Paddy (Kerri Bowen's Community Parks replacement) has not responded to requests to meet		
2	Volunteer update	Some recent responses to requests for volunteers. Facebook posts had resulted in 8 new volunteers. Tom advised that most sections on cliff track are now covered, and we have new waterers in the gullies.		
3	Watering /Planting	Plants Slow response from Council for supply of plants from Heidi Graeme has received 1,000 plants from ECan There are 800 plants in RMC nursery.  Some comments about plants getting burned this year out in the open. Perhaps use more ngaio and akeake in future to produce shade for weaker varieties.	Planting days from around June/July to be decided based on weather and following build up in water table. That more akeake and ngaio seeds should be collected to produce more stock in these varieties.	Graeme to choose planting days and advertise.  Graeme to discuss with Andrea if she is doing seed collection this year. Debbie to work with Gail and Allison to try and collect seeds for planting in the school nursery.
	Weed control	Crack willow-to be removed from top of Morgan's Gully- To be cut by a local arborist- \$- available for removal- funds from Whaka ora Has been some local opposition, question is whether they are invasive, whether there is an actual invasion problem in that area, that all weed vegetation should only be removed when a problem. That vegetation cover is also important That a plan is required to replace vegetation cover-, Richard commented that willow will continue to expand as a pest generally	To support the removal of the willow at the top end of the gully where it is considered a weed. and where there is identified ground cover. That arborist to be instructed to remove willow in a manner that minimises damage to	

Minutes meeting 22-3-2021

1



		and that removal generally preferred Graeme advised that at top end there is good growth of native plantings to provide on going vegetation cover Regional Parks in support of removal but funding resources limited	existing vegetation wherever possible	
4	Working Bees	Weed control- cliff track- Planting Plant collection- western valley road	Priorities 1. banana passionfruit below Marama Tce 2. planting 3. seedling/seed collection	
5	Meetings	Discussed whether or not a preference for regular meetings	To be arranged on regular basis, 3 <sup>rd</sup> Monday of month at 7.00 every two months	Graeme to action
6	Long Term Plan	Still opportunity for submissions Issues:- -gully land sale -covenants not yet approved -Seek on going support for all restoration work -H2H walkway – road protection budget should be applied to include walkway -Support revision of Stoddard point reserve management plan to help resolve use issues on Stoddard Point	Resolved to appoint a Sub committee of chair and secretary to prepare submission generally on the basis of that to be prepared by the Community Association. That RMC draft submission to be circulated before sign off	Graeme and Felix to action
	Update on cliff track	<ul style="list-style-type: none"> <li>• Tom provided update on cliff track maintenance work undertaken with Council staff</li> <li>• Raised issue of track vegetation next to track removed by neighbour below Ranui Crescent</li> <li>• Tom advised Regional Parks are to repair stair case from Te Ara to cliff track</li> <li>• Noted that Dennis Collins raised issue around sewer leak in Godley House memorial Park</li> <li>• Tom advised that work progressing slowly on Orton Bradley end of H2H</li> </ul>	<p>Tom to liaise with neighbour to discuss possible future developments to the area</p> <p>Tom to discuss with Nick Singleton the sewer issue when working on track repair off Te Ara</p>	

### Unconfirmed Minutes

**Minutes** of the ordinary meeting of the Lyttelton Reserves Management Committee Lyttelton/Mt Herbert Board Room, 25 Canterbury Street, Monday 22nd of March 2021 commencing at 7.11 pm.

**Karakia Timatanga** – Brian Downey

**1 Present:** Brian Downey (Chair), Jacob Chick, Rewi Couch, Micha Engelmann Wendy Everingham (Deputy Chair), Joshua Merriam, Andrew Metaxas, Sue Stevens (Treasurer) Gerard Timings (Secretary)

**2 In attendance:** Reuben Davidson, Tyronne Fields, Paul Devlin, Nick Singleton

**3 Members of the Public:** Helen Sinclair, Dan Lewis

**4. Apologies:** Helen Greenfield, Flo McGregor, Aurora Smith, Andrew Turner

**4.1 RESOLVED** that the apologies be accepted.

**MOVED** Micha Engelmann **SECONDED** Andrew Metaxas **CARRIED**

**3 Conflict of Interest Declaration** – No conflicts of interests were declared.

**4 Confirmation of Minutes** of meeting held on February 8th 2021.

**4.1 RESOLVED** that the draft minutes of February 8th 2021 be confirmed as a true and correct record.

**MOVED** Jacob Chick **SECONDED** Wendy Everingham **CARRIED**

### 5. Matters arising from the minutes

Lyttelton Port Company has still not responded to our letter.

### 6. Presentation - Joshua Merriam

Joshua Merriam made a presentation expressing his frustration with the Committee about not being a committee member.

Brian Downey, Tracks Team leader, offered him the opportunity to take an active part in the Tracks Team's current programme which is the Zig-zag track upgrade. He would gain practical experience in the construction of tracks suitable for both walkers and mountain bikers.

## 7. Correspondence

### Correspondence In

7.1 Feb 9 Dawn Baxendale Acknowledgement of receipt of letter to CEO

7.2 Feb 10 Adrianna Hess Banks Peninsula Community Board Agenda Feb 15

7.3 Feb 12 Tracey McLellan MP Congratulations for Canterbury/Aoraki  
Conservation Board Award.

7.4 Feb 22 Rodney Chambers Fire Advisory Feb 22

7.5 Feb 22 Democracy Services Calling for RMC SUBMISSIONS TO LTP -  
Deadline 26th Feb 2021

7.6 Feb 23 Mary Richardson Lyttelton Reserves Management Committee -  
Terms of Reference

7.7 Feb 23 Adrianna Hess Banks Peninsula Community Board Meeting March  
1 - AGENDA

7.8 Feb 23 Liz Carter Invitation to meet Community Board March 1

7.9 Feb 24 Omar Seychell Resignation from the LRMC

7.10 Feb 26 Liz Carter Request to Meet Community Board March 2

7.11 Mar 2 Liz Carter Request to Meet Community Board March 23

7.12 Mar 8 Paul Devlin Proposed Improvement to diagonal track at Urumau  
Reserve (003).pdf

7.13 Mar 15 Joshua Merriam Request to speak and for nomination

7.14 Mar 16 Liz Carter Apologies for not providing agenda.

7.15 Mar 17 Joshua Merriam Further request for speaking rights at the  
meeting

7.16 Mar 18 Liz Carter Formal Agenda for Informal Community Board Meeting

7.17 Mar 22 Sarah Amazinnia Resignation from the LRMC

### Correspondence Out

7.18 Feb 9 Adrianna Hess LRMC Meeting Schedule 2021

7.19. Mar 1 Adrianna Hess Final Long Term Plan

7.20 Mar 2 Liz Carter LRMC Unable to Attend BPCB Meeting March 2

7.21 Mar 7 Liz Carter Further Request for Agenda to meet BPCB

7.22 Mar 16 Liz Carter Further Request for Agenda to meet BPCB

7.23 Mar 18 Joshua Merriam LMTBC working with LRMC

7.24 Mar 19 Community Board Members Copies of unpublished minutes Dec  
and Feb

7.25 **RESOLVED** that the incoming correspondence be accepted, and that the  
outgoing correspondence be approved.

**MOVED** Sue Stevens **SECONDED** Jacob Chick

**CARRIED**

The Chair called for nominations to fill the vacancies created by the resignations of Omar Seychell and Sarah Amazinnia. There were two nominations: -

Rewi Couch nominated by Wendy Everingham and Joshua Merriam nominated by Sue Stevens.

**7.25 RESOLVED** that Rewi Couch be co-opted as a committee member of the Lyttelton Reserves Management Committee.

**MOVED** Wendy Everingham **SECONDED** Gerard Timings **CARRIED**

**7.26 RESOLVED** that Joshua Merriam be co-opted as a committee member of the Lyttelton Reserves Management Committee.

**MOVED** Sue Stevens **SECONDED** Micha Engelmann **CARRIED**

### 8. Treasurer's Report

#### Everyday Account:

Opening balance 1 February 2021	\$3,466.26
Deposits	\$0.00
Payments	\$0.00
Credit interest	\$0.52
Closing balance 28 February 2021	\$3,435.78

#### Term Deposit:

Maturity balance 10 November	\$4,794.96
Interest earned	\$54.39
Opening balance 10 November	\$4,849.35
Matures 9 May 2021	
Interest rate 0.85%	

**Total Funds:** **\$8285.13**

Plants and Related Expenses	\$3612.06
Weed Control	\$391.61
Lower Drainage Track Maintenance	\$1305.63
Gary Broker Memorial Seat	\$1044.51
<b>Total:</b>	<b>\$6353.89</b>

#### Committed Funds:

Conservation Award	\$1500
--------------------	--------

**Total Reserve Funds** **\$7853.89**

Available Funds **\$431.24**

**8.1 RESOLVED** that the financial report for the period ending February 28<sup>th</sup> 2021 be adopted.

**MOVED** Sue Stevens **SECONDED** Jacob Chick **CARRIED**

## 9 Community Board Report – Reuben Davidson

9.1 Reuben updated the committee on the Long Term Plan drop-in sessions encouraging the public to make submissions before the Council deadline April 18<sup>th</sup>. He also encouraged members to make submissions to the ECAN Long Term Plan Option 1 before 11 of April.

9.2 He was asked as to whether the Community Board supports our Long Term Plan submission. He was asked for clarification on the actual process of the Long Term Plan.

9.3 To a question as to why the December and February minutes had not been published in the Community Board's agenda, he said that the Board Members believed that they might contain defamation issues.

9.4 Reuben was asked for the Community Board feedback on our Development Plan progress report that was submitted in December. He had nothing to report.

## 10 Head Ranger Report – Paul Devlin

10.1 The tools requested by the Committee have been supplied by the Rangers.

10.2 There has been progress towards the re-opening of the GeoTech-closed area of the reserve. The Head of Parks, Andrew Rutledge, will sign the area off very shortly. We will be notified when this is completed.

10.3 The temporary "no fire" and "no camping" signs have been erected at Foster and Gilmour Terrace entrances to the Reserve. There was a request from the Committee for another sign to be erected at the Reserve Terrace Entrance.

10.4 Committee members were notified about an access agreement on a fee simple block within the reserve boundary. A driveway has been installed over reserve land. There was confusion as to whether the block of reserve land was in Gilmour or Foster Terrace. Further details will be sent when they come to hand.

10.5 Members were notified of an email sent to Helen Greenfield detailing Port Hills Rangers preferred fire-resistant plants and planting methods for a green border.

10.6 Committee discussed the rangers report for the diagonal track. It was noted that the alignment needed further work – the gradient needed to be constant to lower the maintenance frequency. The width 1.2m was too narrow. It should be a minimum of 1.5 metres as stated in the Urumau Development Plan. A 1.5 metre wide track would also meet the shared-use standards in the DoC Track Construction Guide.

It was noted that the botanist expressed little value for our native plants grown from seed from the local remnant forest. He noted that they could be easily replaced. This is not the view taken by the members. Many hours of work go into establishing the plants. From seed-collecting, growing-on, site-preparation and further two years' of maintenance. Significant effort is made by community members to achieve this outcome.

10.7 Rangers have offered to build and maintain the proposed Diagonal Track. The Tracks Team will be invited to have a site walk-over with the rangers to agree on the alignment and other specifications before the construction begins in Spring.

10.8 Rangers offered assistance with the upgrade of the Zig-zag Track.

10.9 Rangers are investigating feasibility of the Timeball Track

## **11 General Business**

### **11.1 Letter CEO**

The Committee received a response from Mary Richardson to our letter to the CEO on February the 23rd. Our request to meet the CEO and Mayor was not successful. We were referred back to the Community Board.

The Cultural Team sought advice from Rāpaki staff about the letter. They indicated the point of our letter was clear but advised that the Committee maintains the view but does not pursue the matter any further. They suggested that a proper Reserves Act 1977 Management Plan might go some way to resolve ongoing issues.

The Community Board has contacted the Committee regarding our letter to the CEO and an informal meeting is scheduled for March 23 to discuss this further. An agenda has been provided for the meeting. The Committee discussed the agenda items. There are two further items we wanted raised.  
Confidentiality – No one in the Committee wants the meeting to be confidential as indicated on the agenda papers.  
What is Going Well – We want to set a more positive tone and focus on all the good things our team has going for it.

### **11.2 Management Plan - Reserves Act 1977**

The Rāpaki advisor recommended that the Committee offer the Community Board the opportunity to assist with the production of a Management Plan. Whilst Council has made it clear they do not have the resources to do this. The Rāpaki Environmental Team has contacts who could assist. We believe that we can help to source the necessary funding.



History - Gazetted reserves are required by DoC to have a Management Plan as defined in the Reserves Act 1977 within 5 years of being gazetted reserve. We have been calling for this since the Committee began in 2005. Money was previously set aside for this but after amalgamation with the City Council it was returned to the Reserves Account which in turn went to the Rod Donald Trust.

With major issues of Fire Risk Planning, Erosion Control, Geo-tech Rockfall, Pine Plantation Management and a Mountain Bike Park, it is impossible to manage the reserve without this comprehensive framework.

The Community Board is delegated by Council to provide the Management Plan. The Committee would like to assist the Community Board to achieve this aim.

#### **11.3 Fire Risk – Brian Downey**

There was discussion on progress since the last meeting. The Urumau Development Plan provides for planting between the residents' boundary fence and the Drainage Bench Track. To speed up the process, a large amount of *Solanum laciniatum* seed has been collected for broadcasting in this area to rapidly produce a "green belt". The Rangers used this method after the Port Hills fires in 2017.

We were disappointed that one neighbour has chosen to complain about the Committee. All committee members had felt we had come to a good outcome with the meeting with the residents.

#### **11.4 Tracks Group – Brian Downey**

##### **Zig zag track**

Work is progressing on the Zig zag track. Materials are being brought onto site at the top of the track. The track is only 70 cm wide at this point where it joins the Drainage Bench track. The construction of a small retaining wall will permit the track to be widened to 1.5 metres.

##### **Diagonal Track**

The Committee has previously determined that this track will be considered in the medium to long term and does not support the construction of any new tracks at this time. The Track Team is fully engaged with the upgrade and maintenance of existing tracks. This view has been presented to the Community Board a number of times.

**11.5 Community Hours** at Urumau Reserve from February 8 to March 22.

Planting	164
Weeding	21
Tracks	38
Fire Risk	10
Communications	5
Cultural	7
Committee Meetings	32
Administration	70
Total	315hrs

**12 Other Business**

**12.1 Planting** - Authorisation of DoC Order \$125.20

**RESOLVED** that payment of \$125.20 to the DoC Nursery for the purchase of plants, be approved.

**MOVED** Wendy Everingham **SECONDED** Micha Engelmann **CARRIED**

**12.2** What is the programme for the informal meetings?

There was no time to discuss the programme. It was agreed that we would have an email discussion about this.

**13 Next Meeting** May 3rd 2021 at 7pm in the Community Board Room

**14 Close** 9.21 pm

Chair

Date

D

Okains Bay Reserve Management Committee meeting held on

Tuesday 13<sup>th</sup> April 2021

Okains Bay RMC members met at the camp ground at 5 pm to discuss options for parking and access to the estuary.

Meeting started at the community hall at 5.35 pm.

**Present:** Judy Thacker (interim Chairperson), Lester Fletcher, Graeme Page, Matiu Payne, Donna Bruce, Richie O'Malley, Michelle Wallis-Hartley, Colin Jacka, Nick Thacker, Jamie Stewart, Wayne Kay and John Thacker.

**Apologies:** Andrew Turner, Richard Boleyn, Aaron Leith and Denise Tully. Jamie Stewart emailed apology for lateness.

*"The apologies were accepted."*

Moved Judy/Matiu      Carried.

**Minutes of the previous meeting:**

*"The minutes of the previous meeting held on Tuesday 9<sup>th</sup> February 2021 were passed as a true and correct record."*

Moved Donna/Lester      Carried.

**Matters arising:**

1. Grey water system – Colin discussed some issues that need to be addressed to meet compliance. Colin to contact water team at CCC for more information.
2. Capital expenditure on pavilion. Pavilion upgrade is nearly complete just needs to be cleaned and painted.
3. Parking at estuary end. Michelle has fenced off an area for parking as an example. Board happy with plan. Matiu asked if Board have considered the capital reserves? How is the development of pavilion being paid for? Colin reassured the Board it is not coming from \$500k hall fund. Matiu reiterated the importance of a capital expenditure plan. Bollards and signage will be used to mark out parking and no camping areas to allow safe access to the estuary. Colin to find out threshold of amount for operational costs and capital expenses.

4. Upgrade of signage/barriers. A parks gate has been acquired for purpose of blocking vehicles from driving onto the beach. Signage directing people that need access to go to the office.

5. Pest control. Virus has come into effect and Dave Hunter came in to the camp and shot 22 rabbits. No sign of stoats.

6. Okains Bay water supply update. Matiu acknowledged the CCC plan to upgrade the water supply in Okains Bay. Jamie supplied some figures the Council have committed to the project over the next 3 years.

7. Dead trees on beach frontage. CCC rangers assured these are standard practice for breeding birds in the dunes as they encourage insects and provide sanctuary.

8. Fencing between Boleyn property and campground. Paki to be asked to repair fence.

**Health & Safety:** Camp has been surprisingly quiet. Coin boxes from shower blocks were stolen and found discarded in Wainui. Thieves have since been apprehended by police.

**Correspondence:**

**Inward:**

**Feb 10** email from Adrianna Hess, CCC Community Governance Team re: BPCB meeting on February 15<sup>th</sup> 2021. Forwarded to all Okains Bay RMC members.

**Feb 12** automatic reply email from Aaron Leith re: minutes of meeting in February received.

**Feb 12** email from CCC Democracy Services re: minutes of meeting in February received.

**Feb 17** email from Robin Arnold, CCC Community Development Officer re: Community managed facilities (hall) requirements during Level 2. Forwarded to all members.

**Feb 18** email from Robin Arnold re: Community managed facilities requirements during Level 1.

**Feb 22** email from Democracy Services re: submission to CCC LTP deadline 26<sup>th</sup> February 2021. Forwarded to all members.

**Feb 23** email from Adrianna Hess re: BPCB meeting on March 1 agenda. Forwarded to all members.

**Mar 8** email from Donna Bruce re: book community hall on April 9<sup>th</sup>, 10<sup>th</sup> & 11<sup>th</sup>.

**Mar 22** email from Kathryn Clare re: request for Redfern permit to install headstone at Okains Bay cemetery. Forwarded to all members.

**Mar 29** email from Democracy Services re: Okains Bay LTP submission received and recommendation to submit directly to CCC LTP online and ECan LTP online.

**Mar 31** email from Raewyn Ogilvie re: apologies from Andrew Turner as he cannot attend the next Okains Bay RMC meeting.

**Apr 1** email from Adrianna Hess re: LTP submission attachment converted to a pdf file for online CCC and ECan forms.

**Apr 1** email from CCC re: LTP submission received.

**Apr 1** email from ECan re: LTP submission received.

**Apr 9** email from Wayne Kay re: agenda for next meeting. Forwarded to all members.

**Apr 9** email from Wendy Riley at the Okains Bay Museum re: please cancel booking of hall for 15<sup>th</sup> May.

**Apr 12** email from Denise Tully re: introducing herself as new representative for TRoNT and apologies from Aaron Leith and Denise for not being able to attend meeting on April 13<sup>th</sup>.

**Apr 13** email from Jamie Stewart re: apologies for lateness.

**Outward:**

**Feb 12** minutes of the meeting held on Tuesday 9<sup>th</sup> February 2021 were sent to all Okains Bay RMC members, TRoNT and CCC representatives.

**Apr 1** email to Adrianna Hess re: converting word document to pdf file for attachment for online submissions at CCC and ECan.

*"The inward/outward correspondence was received."*

*Moved Graeme/Nick      Carried.*

**Finance report:**

The financial reports for February and March 2021 were emailed to Board members on Monday 12<sup>th</sup> April by Colin Jacka. Colin supplied printed copies for all members.

Queries re: difference in costs and settlements on the financial spreadsheet were discussed and explained. Colin to discuss queries with finance team at CCC.

*"The financial reports for February and March 2021 were accepted."*

*Moved Nick/Donna      Carried.*

General business:

1. Long term storage for caravans. Michelle discussed working together as a team and putting out a newsletter to the community notifying them of ongoing work at the camp ground and on the reserves. Engaging with the locals and a chance to get feedback and ideas from the community. *Moved Lester/Judy to support Michelle's concept of a community newsletter. Carried.*

Michelle suggested money from storing caravans could be saved and used for a community event. Sub-leasing the paddock to be used for caravan storage may be an option. Matiu asked to see the lease agreement in respect of the racetrack paddock. *Colin to action.*

Richard Boleyn asked for his letter re: caravan storage and legal requirements to be tabled. Wayne read Richard's letter. *To be discussed at next meeting.*

2. Capital expenditure. *Capital expenditure will be discussed at next meeting.*

3. Daily numbers of campers. Michelle tabled 3 copies of daily numbers for discussion by Board members.

4. Community hall bookings and charges. A daily charge of \$50 and half day \$25 was decided as a minimum charge. Bookings will be taken at the camping ground and Colin to look into inclusion on website.

*Moved Wayne/Judy that new charges be adopted. Carried.*

5. Cemetery hedge cutting. *To be discussed at next meeting.*

Meeting closed at 7.44 pm. Next meeting on Tuesday 8<sup>th</sup> June 2021 at 5.30 pm in the community hall.

.....  
Chairperson

.....  
Date

**Lyttelton Reserves Management Committee**  
**Development Plan Outcomes Dec 1, 2019 – Dec 1 2020**

This report highlights the total hours invested and tasks completed or underway in Urumau and Whaka Raupō Reserves by the Committee and our community from Dec 1 2019 to Dec 1 2020. The report is in response to our attendance at the Community Board Meeting on November 16<sup>th</sup>. Community Board Members requested an update on progress of our Development Plan.

The bulk of the work has been completed by the residents of greater Lyttelton and the work has focused mostly on our high priority outcomes. Due to Covid 19 and the inability to get into the Reserve for several months this work programme is behind schedule in relation to Tracks Upgrades and Track specifications.

The work plan was developed in the previous triennium and ratified on 14<sup>th</sup> October 2019. It was amended with the addition of a Communications Plan by the new committee on February 10th, 2020. The plan was based on the one-page pictorial Urumau Development Plan Summary and the Draft Development Plan Report see attached. The Committees priorities were ranked – High, Medium and Low.

**HIGH – within 1 yr**

- Tangata whenua values – woven into everything
- Signage
- Fire hazard – fire management plan
- Planting + weeding – weeding + planting

**MEDIUM – within 3 yrs**

- Tracks + networks
- Animal pest control

**LOW – more than 3 yrs**

- Pine + macrocarpa
- LPC land
- Timeball station
- Seat

Tracks and networks were classed as a medium-term priority. The current committee has focused initially on track upgrades, maintenance, and specifications. New tracks will be considered from July 2021.

**TOTAL HOURS INVESTED IN RESERVES     2574 hours**

**Approximate contribution living wage @\$22.10 hr \$56,885**  
**Community grown plants 390 @\$5 \$1950**



Lyttelton Reserve Management Committee Priorities for 20/21	Progress Report Development Plan Achievements to November 2020
1. Planting Plan plus associated work programme	<ol style="list-style-type: none"> <li>1. Three Year Planting Plan developed and approved – Feb 2020 <b>COMPLETED</b></li> <li>2. Community Nursery fully operational in Lyttelton February 2020 <b>COMPLETED</b></li> <li>3. Year 1 block planted 390 community grown plants August 2020 <b>COMPLETED</b></li> <li>4. Community watering team commences October 2020 <b>Work in Progress</b></li> <li>5. Exploration for Herbal Species commences in Whakaraupō Nov 2020 <b>Work in Progress</b></li> <li>6. <b>550+hrs involved in site preparation, watering, potting up, seed collecting, nurse work and planting</b></li> </ol>
2. Cultural Plan	<ol style="list-style-type: none"> <li>1. Discussions have commenced at Rāpaki regarding koha, dual signage and the Cultural Garden at Whakaraupō <b>Work in Progress</b></li> <li>2. <b>20+hrs</b></li> </ol>
3. Weed Plan plus associated work programme	<ol style="list-style-type: none"> <li>1. General Plan created June 2020 <b>COMPLETED</b></li> <li>2. Community weed days (weather and covid 19 permitting) the last Sunday of the month – 5 <b>WEED DAYS HELD</b></li> <li>3. We have had two working bees with the Conservation Volunteers Feb and November. <b>COMPLETED</b></li> <li>4. We participated in a community filming showing people how to eradicate Old Man's Beard. <b>COMPLETED</b></li> <li>5. <b>254+hrs</b></li> </ol>
4. Fire Risk Plan	<ol style="list-style-type: none"> <li>1. Presented to City Council Annual Plan July 2020. Highlighted CCC does not have a Fire Risk Management Plan <b>COMPLETED</b></li> <li>2. Lobbying to get a Community Meeting for Fire Information Nov 2020 <b>COMPLETED</b></li> <li>3. Lobbying the Community Board for the City Council to develop a catchment wide Fire Risk Management Plan <b>Work in Progress</b></li> <li>4. Documented what we have done in Urumau to mitigate fire Nov 2020 <b>COMPLETED</b></li> <li>5. Research <b>Work in Progress</b></li> <li>6. <b>15+hrs</b></li> </ol>

7. Communications Plan plus actions	<ol style="list-style-type: none"> <li>1. Created a framework January 2020 <b>COMPLETED</b></li> <li>2. Created social media platform February 2020 <b>COMPLETED</b></li> <li>3. Published three articles in Lyttelton Review over the year <b>COMPLETED</b></li> <li>4. Worked on internal communications <b>Work in Progress</b></li> <li>5. Entered Canterbury/Aroraki Conservation Awards <b>COMPLETED</b></li> <li>6. Developed a shared resource for all Reserve documents in Google Drive <b>Work in Progress</b></li> <li>7. Created several posters <b>COMPLETED</b></li> <li>8. Community mailbox drops * 2 <b>COMPLETED</b></li> <li>9. Posted 32 stories on Facebook and 5 events</li> <li>10. <b>57+hrs</b></li> </ol>
<p>8. Tracks</p> <p>Upgrades to existing tracks - Zig Zag and Urumau Loop</p> <p>Specifications for Shared Use Tracks</p> <p>Specifications for Mountain Bike Tracks</p> <p>General Maintenance</p>	<ol style="list-style-type: none"> <li>1. Track Survey <b>COMPLETED</b></li> <li>2. Stakeholder User Group established June 2020 - Three community stakeholder meetings have been organised June; July and November 2020 These forums are for all reserve users including Mountain Bikers <b>COMPLETED</b></li> <li>3. Zig Zag Track upgrade begins Nov 2020 <b>Work in Progress</b></li> <li>4. LMBC cleared some debris from Urumau Loop Track August 2020</li> <li>5. Specific site meetings with LMBC 3. One an urgent maintenance issue – 2 walkabouts re MTBC priority track for 2021/22 Several informal catch ups in London Street.</li> <li>6. Maintenance Zig Zag and Reserve Terrace Tracks <b>Work in Progress</b></li> <li>7. Detailed Track Specifications for Shared Use, MTB and Walking Tracks. <b>Work in Progress</b></li> <li>8. Track Group Meetings 2020 <b>COMPLETED</b></li> <li>9. Site visits</li> <li>10. <b>236+hrs</b></li> </ol>
9. Signage	<ol style="list-style-type: none"> <li>1. No progress – This is not clear cut. We have tracks with unauthorised names, tracks with no names and tracks with requests for dual names. We need to understand the process to move forward with this.</li> </ol>
10. Other Work Completed	<ol style="list-style-type: none"> <li>1. General Administration Brian approx 3hrs day <b>1092+ hrs</b></li> <li>2. General Administration Wendy <b>200+hrs</b></li> </ol>

	<ul style="list-style-type: none"><li>3. Mobil Oil Requests <b>20+hrs</b></li><li>4. Access Agreements <b>10+hrs</b></li><li>5. Committee Meetings <b>120+hrs</b></li></ul>
--	---

Report By:

Wendy Everingham Deputy Chair Lyttelton Reserves Management Committee

Nov 30<sup>th</sup> 2020

Item 7

Attachment E



## 8. 281 Beach Road Akaroa (The Red House, Takapūneke) - Declare and Classify Land as Historic Reserve

Reference / Te Tohutoro: 21/374020

Report of / Te Pou

Matua:

Barry Woodland, Property Consultant, [barry.woodland@ccc.govt.nz](mailto:barry.woodland@ccc.govt.nz)

General Manager /

Pouwhakarae:

Diane Brandish, Acting General Manager Resources

### 1. Purpose of the Report / Te Pūtake Pūrongo

- 1.1 The purpose of this report is to seek the Board's delegated approval to formally declare and classify the property referred to as the Red House at 281 Beach Road, Akaroa, as a Historic Reserve.
- 1.2 The Red House property is of significant cultural, spiritual and historic importance to Ngai Tahu and in particular Ōnuku Rūnanga.
- 1.3 Its recent purchase by Council was contemplated as an integral element of the Takapūneke Reserve Management Plan (section 5.16) which was formally adopted by Ōnuku Rūnanga and Council in 2018.
- 1.4 Similarly the proposed vesting of the property as a Historic Reserve is integral to the Council's objective of seeking National Reserve status for the wider Takapūneke Reserve and Policy 5.16(5) Takapūneke Reserve Management Plan 2018 – attached as **Attachment A**.
- 1.5 As such the decision in this report is of high significance in relation to the Christchurch City Council's Significance and Engagement Policy.

### 2. Officer Recommendations / Ngā Tūtohu

That the Te Pātaka o Rākaihautū/Banks Peninsula Community Board:

1. Approves the commencement of the process under Sections 14 and 18 of the Reserves Act 1977 (the Act) to declare and vest as Historic Reserve the land at 281 Beach Road, Akaroa, described as Lot 2 DP 73274 comprised in CB42B/681, and having an area of 2864m<sup>2</sup> or thereabouts, noting that the public notification pursuant to Section 14(2) of the Act has been satisfied through the public consultation process for the Takapūneke Reserve Management Plan (Attachment A of this agenda).
2. Approves that the Property Consultancy Manager be delegated the authority to manage and conclude the process pursuant to Sections 14 and 18 to Gazette the land as Historic Reserve.

### 3. Reason for Report Recommendations / Ngā Take mō te Whakatau

- 3.1 The sale and purchase agreement for the Red House property dated 7 December 2020 did not include instructions to vest the property as a Historic Reserve under the Reserves Act 1977. The purpose of this report is to provide a process to deal with this technicality.
- 3.2 The vesting of the Red House property as an Historic Reserve subject to the Reserves Act 1977 will:

- Recognise the cultural, spiritual and historic value and significance of the property to Ōnuku Rūnanga, the local community, Ngāi Tahu and the nation.
- Fulfil the Takapūneke Reserve Management Plan 2018 policy section 5.16 adopted by Council.
- Enable the Red House property to be vested and classified as Historic Reserve and be integrated as part of the wider Takapūneke Historic Reserve.
- Further support the Council's objective of seeking National Reserve status for Takapūneke Reserve.
- Further support the partnership between the Ōnuku Rūnanga and Council, and the future co-governance management of Takapūneke Reserve.

#### 4. Alternative Options Considered / Ētahi atu Kōwhiringa

- 4.1 The only alternative option would be to determine not to vest the Red House property as a Historic Reserve. This option would be contrary to the intent of the Takapūneke Reserve Management Plan 2018 as adopted by Council and Ōnuku Rūnanga.

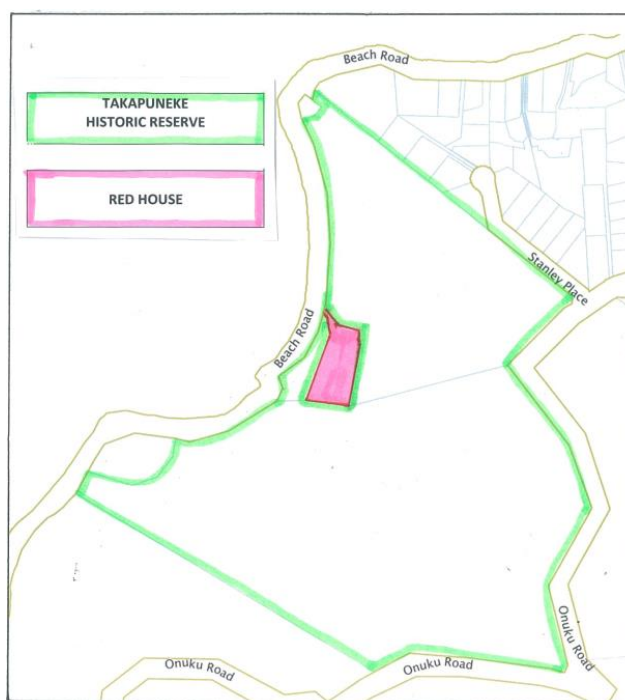
#### 5. Detail / Te Whakamahuki

##### Takapūneke Reserve Management Plan

- 5.1 In recognition of the cultural, spiritual and historic significance of Takapūneke to Ngāi Tahu, and in particular Ōnuku Rūnanga, the Takapūneke Reserve Management Plan was developed in partnership with Ōnuku Rūnanga and adopted by Council on 7 June 2018 (refer **Attachment A**).
- 5.2 An outcome of the Reserve Management Plan was the establishment of the Takapūneke Reserve Co-Governance Group to provide guidance for the management and development of the reserve in accordance with the Reserve Management Plan.
- 5.3 With regard to the Red House property the "Objectives and Policy" section 5.16 of the adopted Plan specifically seeks to:
- 5.16.1 – purchase the property if it becomes available.
  - 5.16.2 – rezone the property from Residential Banks Peninsula to Open Space Community Parks under the District Plan.
  - 5.16.5 – *"vest the Red House as Historic Reserve under the Reserves Act 1977, in recognition of its cultural and historic significance to Takapūneke, should the Council obtain the property"*.
- 5.4 A longer term objective of the Reserve Management Plan (section 5.15) is to seek National Reserve status for Takapūneke Reserve.

##### Red House – Location and Legal Description

- 5.5 The property is described as Lot 2 DP 73274 and comprised within identifier CB42B/681. Access is by way of a sealed right of way over reserve land (Lot 1 DP 73274). There are a number of memorials on the title, none of which are detrimental.
- 5.6 As illustrated below the Red House property is currently enclosed by Council owned Historic Reserve land that comprises the wider Takapūneke Reserve. The site of the Red House would have originally been part of the Takapūneke trading site.



### Red House Purchase

- 5.7 The Council resolved to purchase the Red House on 3 December 2020 (CNCL/2020/00149).
- 5.8 The resulting sale and purchase agreement did not specifically include instructions to vest the land as a 'Historic Reserve'. It is currently held as a freehold interest with no specified purpose.
- 5.9 As such, this report seeks to resolve this technicality.

### Reserves Act 1977 Process

- 5.10 Under section 14(1) of the Reserves Act 1977 *"any local authority may by resolution declare any land vested in it to be a reserve....and held for any of the purposes specified in sections 17 to 23"*.
- 5.11 In this case the proposed purpose is pursuant to section 18 – Historic Reserves.
- 5.12 *Public consultation*
- 5.13 Section 14 (2) of the Act requires that *"no such resolution shall be passed before the expiration of 1 month after notice of intention to pass the same and calling for objections thereto in writing....and until it has considered all such objections received within that period"*.
- 5.14 The Takapūneke Reserve Management Plan was open for public consultation for over a month followed by submissions being heard by the Reserves Hearings Panel. The Plan was subsequently adopted in June 2018. As such no further public consultation is required.

### Delegated Authority Decision

- 5.15 The Community Board has delegated authority for section 14 Reserves Act 1977 as referred to on page 156 of the Delegations Register.

#### Reserves Act 1977

Section	Responsibilities, duties, and powers etc.	Limits etc.
14	To declare any land vested in the Christchurch City Council to be a reserve subject to any conditions specified in the resolution, to be held for any of the purposes specified in sections 17 to 23.	This power may not be sub-delegated.  Excludes the hearing and determining of submissions/objections (refer Delegations Register Part D Sub-Part 4 Council Hearings Panels).

- 5.16 Once the Board approves the land to be reserve and classified as a Historic Reserve staff will prepare a Gazette Notice for the Historic Reserve classification.

#### **Community Views and Preferences**

- 5.17 As outlined above in paragraph 5.14 community views and preferences, and in particular the requirements of Ōnuku Rūnanga, have been considered and integrated as an integral part of the consultation process undertaken prior to Council resolving to adopt the Takapūneke Reserve Management Plan 2018.
- 5.18 The decision affects the following wards/Community Board areas:
- 5.18.1 Banks Peninsula Community Board.

## **6. Policy Framework Implications / Ngā Hīraunga ā- Kaupapa here**

### **Strategic Alignment /Te Rautaki Tīaroaro**

- 6.1 Healthy environment – Unique landscapes and indigenous biodiversity are valued and stewardship exercised.
- 6.2 Strategic Priorities - Enabling active and connected communities to own their future.
- 6.3 This report supports the [Council's Long Term Plan \(2018 - 2028\)](#):
- 6.3.1 Activity: Parks & Foreshore
- Level of Service: 6.8.1.1 Parks are provided managed and maintained in a clean, tidy, safe, functional and equitable manner- (Provision) - Community Parks:5.9 ha/1000 people

### **Policy Consistency / Te Whai Kaupapa here**

- 6.4 The decision is consistent with the Takapūneke Management Plan 2018 and specifically Policy 5.16.5 (refer Attachment A).

### **Impact on Mana Whenua / Ngā Whai Take Mana Whenua**

- 6.5 The decision does involve a significant decision in relation to ancestral land or a body of water or other elements of intrinsic value, therefore this decision does specifically impact Mana Whenua, their culture and traditions. The land occupied by the Red House was part of Chief Te Maiharanui's settlement before the massacre in 1830. Ōnuku Rūnanga endorse the Red House becoming once again part of Takapūneke Reserve, as a Historic reserve, uniting all of the land at Takapūneke as part of their ancestral land.
- 6.6 Mana Whenua have been involved with the development of the Takapūneke Reserve Management Plan 2018 and endorse the policies within that document, including classifying the Red House property as Historic Reserve.
- 6.7 The Takapūneke Reserve Co-Governance Group, with equal representatives from the Ōnuku Rūnanga and the Christchurch City Council, fully support the classification of the Red House land as a Historic Reserve under the Reserves Act 1977.

### **Climate Change Impact Considerations / Ngā Whai Whakaaro mā te Āhuarangi**

- 6.8 No impact. The Red House property is located on the west side of Takapūneke well above the harbour.

### **Accessibility Considerations / Ngā Whai Whakaaro mā te Hunga Hauā**

- 6.9 No impact.



## 7. Resource Implications / Ngā Hīraunga Rauemi

### Capex/Opex / Ngā Utu Whakahaere

- 7.1 Cost to Implement – costs associated with the statutory process are budgeted within the Parks planning operational budget.
- 7.2 Maintenance/Ongoing costs – the classification and vesting as a reserve does not affect the maintenance of the land.
- 7.3 Funding Source – statutory approval costs will be covered off within the Parks Unit operational budget.

### Other / He mea anō

- 7.4 No other considerations.

## 8. Legal Implications / Ngā Hīraunga ā-Ture

### Statutory power to undertake proposals in the report / Te Manatū Whakahaere Kaupapa

- 8.1 The general powers of competence set out in section 12(2) “Status and Powers” of the Local Government Act.
- 8.2 The Takapūneke Reserve Management Plan 2018 (as noted in paragraph 6.4 above).

### Other Legal Implications / Ētahi atu Hīraunga-ā-Ture

- 8.3 Statutory policy to be followed pursuant to sections 14 and 18 Reserves Act 1977.
- 8.4 This report has not been reviewed and approved by the Legal Services Unit

## 9. Risk Management Implications / Ngā Hīraunga Tūraru

- 9.1 There are no perceived risks associated with the declaration and classification process.

## Attachments / Ngā Tāpirihanga

No.	Title	Page
A <a href="#">↓</a>	Takapūneke Reserve Management Plan 2018	47

In addition to the attached documents, the following background information is available:

Document Name	Location / File Link
Not applicable	

## Confirmation of Statutory Compliance / Te Whakatūtutanga ā-Ture

Compliance with Statutory Decision-making Requirements (ss 76 - 81 Local Government Act 2002).

(a) This report contains:

- (i) sufficient information about all reasonably practicable options identified and assessed in terms of their advantages and disadvantages; and
- (ii) adequate consideration of the views and preferences of affected and interested persons bearing in mind any proposed or previous community engagement.

(b) The information reflects the level of significance of the matters covered by the report, as determined in accordance with the Council's significance and engagement policy.

### Signatories / Ngā Kaiwaitohu

<b>Author</b>	Barry Woodland - Property Consultant
<b>Approved By</b>	Angus Smith - Manager Property Consultancy Russel Wedge - Team Leader Parks Policy & Advisory Andrew Rutledge - Head of Parks Mary Richardson - General Manager Citizens & Community

## Item 8

# Christchurch City Council

In Partnership with

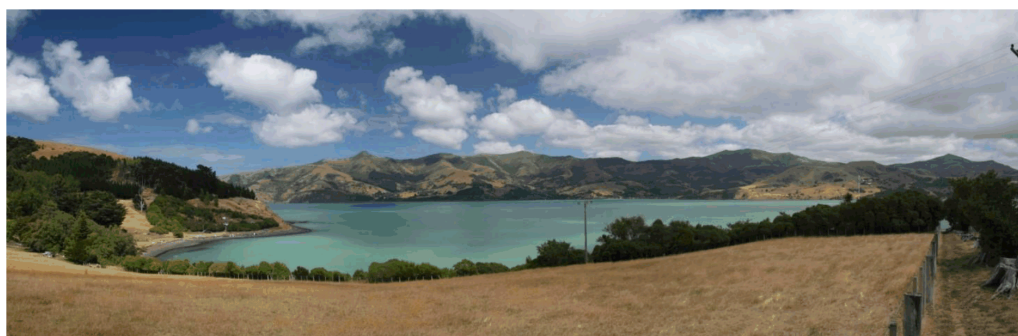
Ōnuku Rūnanga

---

## Takapūneke Reserve Management Plan

2018

---



#### Acknowledgments

The Asset Planning and Management Team, Parks Unit of the Christchurch City Council and the Ōnuku Rūnanga would like to thank the following people for their assistance and input into this Reserve Management Plan.

#### The Takapūneke Reserve Management Plan Project Team

##### Ōnuku Rūnanga representatives:

Pere Tainui  
Mel Tainui  
Debbie Tikao

##### Christchurch City Council representatives:

Pam Richardson  
Brent Smith  
Russel Wedge

The Project Team would like to thank the Ōnuku Rūnanga and in particular Rik Tainui, Chair Ōnuku Rūnanga, for the support, encouragement and willingness to provide cultural tikanga, and whakapapa information and knowledge of Takapūneke Reserve and the surrounding areas.

#### Takapūneke Conservation Report

The Takapūneke Conservation Report has provided valuable information on the cultural heritage values associated with Takapūneke Reserve to guide and form the development of the Reserve Management Plan. The Report has provided an overview of the social, cultural, architectural and site history of Takapūneke, which has been incorporated into the Reserve Management Plan, where appropriate. The Report was adopted by the Christchurch City Council in December 2012. The Takapūneke Reserve Management Plan Project Team would like to thank all of the individuals and groups that contributed to the Takapūneke Conservation Report.



### **Preface**

Takapūneke Reserve is located on the western side of Akaroa Harbour, approximately 1.8 km south-west of Akaroa township. The reserve area referred to in this Management Plan as “Takapūneke Reserve”, consists of three different land parcels: Green’s Point, Takapūneke Reserve, and Beach Road Park.

The Management Plan has been developed in partnership with Ōnuku Rūnanga in recognition of the Rūnanga’s historic cultural, social and spiritual connection to the land and their future involvement in the management and development of the reserve, as part of a Co-Governance Group.

An initial draft Management Plan was open for submissions between the 11 October and 15 December 2017. Public notice was given in accordance with section 41 (6(a)) Reserves Act 1977 stating that the draft Management Plan was available for public inspection and inviting persons or organisations to provide written suggestions or objections.

A Hearings Panel heard submissions on 2 February 2018. The Hearings Panel at an open forum on 7 February 2018 requested clarification from Council staff on a number of points raised at the submissions hearing. The Hearings Panel continued in an open forum to consider all the submissions and recommended changes to amend the draft Management Plan.

At a deliberations meeting on 2 May 2018 the Hearings Panel reviewed the Management Plan and made their recommendations on the (Draft) Takapūneke Reserve Management Plan to Council.

At the Council meeting on 7<sup>th</sup> June 2018 the Council formally adopted the recommendations of the Hearings Panel (CNCL/2018/00112) to (1) adopt the Takapūneke Reserve Management Plan containing revisions agreed to by the Hearings Panel at its meeting on 2 May 2018, (2) make a formal application to the Minister of Conservation to apply for National Reserve status for Takapūneke Reserve as per the Reserves Act 1977 Section 13, (3) request staff to establish a Co-Governance Group, as set out in paragraphs 5.15.2, 5.15.3 and 5.15.4 of the Takapūneke Reserve Management Plan, (4) note the Hearings Panel request that the Co-Governance group be asked to establish initial priorities and funding requirements, and formally acknowledge and thank the Ōnuku Rūnanga, submitters, the Akaroa community and Council staff for their participation in this process. The Management Plan for the Reserve became operative at that date.



## TABLE OF CONTENTS

1. <b>1 OVERVIEW</b>	7
1.1 Introduction	7
1.2 Purpose of the Reserve Management Plan	10
1.3 Reserve Map – Takapūneke Reserve – Three Areas	13
2. <b>2 TAKAPŪNEKE RESERVE – THE THREE AREAS</b>	14
2.1 Tu Ahu Tahi (Park of Silence)	14
2.2 Te Wahi Ao o Takapūneke (Park of Healing)	14
2.3 Pou tu te raki o Te Maiharanui (Park of Reflection)	14
2.4 Reserve Map - Takapūneke Reserve – Landscape Features	15
3. <b>3 VISION</b>	16
4. <b>4 MANA WHENUA VALUES</b>	17
4.1 Introduction	17
4.2 Mana Motuhake	17
4.2.1 Purpose	18
4.3 Whakapapa	18
4.3.1 Purpose	18
4.4 Kaitiakitanga	19
4.4.1 Purpose	19
4.5 Whanaukataka	20
4.5.1 Purpose	20
4.6 Mātauranga Ngāi Tahu	20
4.6.1 Purpose	20
4.7 Tikanga	21
4.7.1 Purpose	21
5. <b>5 OBJECTIVES AND POLICIES</b>	22
5.1 Cultural Heritage and History	23
5.2 Mana Whenua and Traditions	24
5.3 Ngāi Tahu Values and Dual Heritage	24
5.4 Tu ahu Tahu – Park of Silence (Controlled Access Area)	25
5.5 Key Viewing Areas	26
5.6 Vegetation and Landscape	27
5.7 Animals, Birds and Invertebrates	28
5.8 Recreation	29
5.9 Signage	30



5.10	Vehicle Parking .....	31
5.11	Access and Paths.....	33
5.12	Buildings, Furniture and Structures .....	34
5.13	Ōnuku Landfill Site - Capped .....	36
5.14	Infrastructure and Technology .....	37
5.15	Co-Governance and National Reserve Status.....	38
5.16	The Red House (Currently in private ownership) .....	39
6.	<b>6 ISSUES</b> .....	<b>41</b>
6.1	Protecting Cultural Heritage, Whakapapa and History .....	41
6.2	Recreation .....	42
6.3	Vegetation and Landscape .....	42
6.4	Car Parking.....	43
7.	<b>7 LONG-TERM PLAN (LTP) DISCLAIMER</b> .....	<b>43</b>
8.	<b>8 RESOURCE INFORMATION</b> .....	<b>43</b>
8.1	Purpose of the Reserve .....	43
8.2	Land Tenure, Legal Status and Classification.....	44
8.3	Physical Description .....	45
8.3.1	Setting.....	45
8.3.2	Site description.....	45
8.3.3	Climate.....	45
8.3.4	Buildings and facilities .....	46
8.3.5	History.....	46
9.	<b>9 POLICY FRAMEWORK</b> .....	<b>46</b>
9.1	Policies and strategies.....	46
10.	<b>10 APPENDICES</b> .....	<b>47</b>





*Takapūneke Reserve looking from Beach Road up the hill towards the capped landfill site where the (top) car park is proposed. A path with steps are proposed from Beach Road to the top car park.*



## 1 OVERVIEW

### 1.1 INTRODUCTION

Ko Ōteauheke te mauka  
Ko Awaiti te awa  
Ko Kai Tārewa ti hapū  
Ko Kai Tahu te iwi  
Ko Takitimu to waka  
Ko Karaweko te tupuna whare  
Ko Ōnuku to marae  
Tena koutou katoa

Ōnuku Rūnanga is the representative of the hapū Ngāi Tārewa and Ngāti Irakēhu at Ōnuku, on the shores of Akaroa Harbour.

Mana Whenua (direct descendants) of Ōnuku Rūnanga value connection to kaitiakitanga and rangatiratanga. For generations, the cultural landscape of Akaroa has been shaped by Mana Whenua.

In accordance to anchoring and retaining our ahi ka (occupation of ancestral land) Ōnuku Rūnanga celebrate and honour the places our tupuna (ancestor) moved through. Knowledge and experience of these cultural landscapes and mahinga kai (cultivation) has been retained so that this mātauranga (knowledge) can be passed down to future generations. Ōnuku Rūnanga holds Mana Whenua over the takiwā (area) which covers the Akaroa Harbour, surrounding the coastal environment and hills as defined by the Ngāi Tahu Claims Settlement Act 1998.

From the view point of valuing significant sites Ōnuku Rūnanga is centered on Ōnuku within the hills and the coast of Akaroa Harbour. Rangatira (Chief) of the Kai Tārewa hapu, Wiremu Harihona Karaweko, stamped out the takiwā of Ōnuku as from the hill top of Pōhatu to the hill top of Te Ruahine (point of the entrance of Akaroa Harbour) then to Timutimu Head on the west, but that the roadways between the inner and the outer bays should always be left open, so other hapū (sub-tribe) could come and go for mahinga kai.

Takapūneke Reserve is located approximately 1.8 km south-west of Akaroa township on Beach Road and within Red House Bay of Akaroa Harbour. The reserve area referred to within the context of this Management Plan as “Takapūneke Reserve” includes three land parcels, one of which is already called Takapūneke Reserve. The land parcels are: Green’s Point, Takapūneke Reserve and Beach Road Park.



At the northern end of Green's Point is the Britomart Historic Reserve, where the British flag was raised as a demonstration of British sovereignty to the people of Banks Peninsula in 1840. In 1898 the present monument was unveiled to commemorate the event.

The Takapūneke Reserve Management Plan recognises and acknowledges the Britomart Historic Reserve in the history of Takapūneke and Red House Bay, and the significance of these events in the history of Akaroa and New Zealand. However, the Britomart Historic Reserve is not considered by the Ōnuku Rūnanga to be part of their cultural heritage of Takapūneke. The Takapūneke Conservation Report details the massacre that occurred on Takapūneke and the events that led to the Britomart monument. The Takapūneke Reserve Management Plan and the Conservation Report should be read in conjunction with each other as the intention is not to duplicate the contents in either document. A further proposal to record the history of the site and the management of the memorial is under consideration and a separate project to prepare a landscape development plan for the Britomart Historic Reserve is being undertaken. Taking into consideration the above statements, the Britomart Historic Reserve has not been included in the Takapūneke Reserve Management Plan.

In 1964 an area of land (0.2987 ha) on the western corner of Takapūneke Reserve was bought by Akaroa County Council for the Akaroa Sewage Treatment Plant. During the construction middens at least 150 years old were destroyed, which were part of chief Tē Maiharanui's settlement. The Christchurch City Council is currently investigating alternative sites to construct a new sewage treatment plant that will enable the existing Treatment Plant to be decommissioned. The land is held as Fee Simple by the Council and the Ōnuku Rūnanga have indicated they would like the land returned to them once the site has been remediated after the Treatment Plant has been decommissioned.

There is one other parcel of land, which is privately owned and situated between Green's Point, Takapūneke Reserve and Beach Road Park. This property does not come under the jurisdiction of the Takapūneke Reserve Management Plan although reference to the property is made within the Objectives and Policies.

In 2009 the Minister of Conservation changed the Reserve classification for the three land parcels [Green's Point, Beach Road Park and Takapūneke Reserve] to Historic Reserve under the Reserves Act 1977 in recognition of the historic significance of the site.

An Objective has been included in the Management Plan to apply to the Minister of Conservation to re-name Green's Point and Beach Road Park as Takapūneke Reserve, via a Gazette notice. These land parcels are owned and administered by the Christchurch City Council and form the majority of the land area in Red House Bay. In Tē reo Māori Takapūneke is the name of Red House Bay and means 'a bay to drag in a fishing net'<sup>1</sup>. The bay was called Red House Bay after W. B. Rhodes built his house in the bay in 1839, which

---

<sup>1</sup> Ogilvie Gordon, Place Names of Banks Peninsula and the Port Hills, August 2017



was painted bright red<sup>2</sup> and destroyed by fire in 1888. The red house as seen today is believed to have been built in the 1920s on the original red house site.

Takapūneke has significant cultural, social, spiritual and heritage values to Ngāi Tahu and in particular Ōnuku Rūnanga. In the early 1800s the chief Tē Maiharanui established a major trading post with the Europeans in Takapūneke. In 1830 Takapūneke became the site of a massacre, through the assistance of the British ship Brig Elizabeth.

In 1831, word of the massacre at Takapūneke and the Brig Elizabeth's involvement reached the Governor of New South Wales, Ralph Darling, where the British authorities in Sydney became concerned about the involvement of Captain Stewart of the Brig Elizabeth in the atrocity. The Governor proposed to the British Government in London to appoint James Busby as an official resident to discourage any further such atrocities as the Brig Elizabeth incident. The appointment of James Busby was the first formal intervention by the British Government in the affairs of New Zealand and a direct outcome of the Brig Elizabeth incident. This led through a series of events between 1833 and 1840 to Governor Hobson being dispatched to New Zealand to negotiate a treaty with Māori chiefs which led to the signing of the Treaty of Waitangi at the Bay of Islands on 6 February 1840 and the assumption by Britain of sovereignty over New Zealand. Takapūneke is historically significant because there is a direct sequence of events at Takapūneke in 1830 and the acquisition of sovereignty over New Zealand by the British Government in 1840.

After the 1830 massacre the Ōnuku Rūnanga, out of respect for their Tupuna (ancestors) considered Takapūneke a sacred site and avoided the area for over a hundred years.

In contemporary society there is a growing awareness and demand to know more about past events. Ōnuku Rūnanga has joined the Christchurch City Council to work together on this Reserve Management Plan for Takapūneke. Through the formal and informal discussions a successful partnership has formed between the two organisations. The aim of the partnership is to produce a Reserve Management Plan with a Vision for Takapūneke that recognises the cultural, archaeological and social heritage values of the site.

The Vision is supported by Management Plan Objectives and Policies that acknowledge the significance of Takapūneke to the Rūnanga, the local community, and people of New Zealand. The Management Plan will provide a way forward to manage and develop Takapūneke Reserve for future generations.

In May 2002 Takapūneke was registered as wāhi tapu (sacred places and things) in recognition of its cultural, spiritual and historical significance to tāngata whenua by Heritage New Zealand Pouhere Taonga (Heritage NZ), List number 7521. In 2006 the Banks Peninsula District Council resolved to seek National Reserve status for Takapūneke, which is fully supported by Ōnuku Rūnanga and Christchurch City Council (Banks Peninsula District

---

2

<http://Christchurchcitylibraries.com/Heritage/Publications/Akaroa/OldMaoriPlaceNames/Vangioni-1967.pdf>

Council amalgamated with Christchurch City Council in March 2006). The Reserve Management Plan is a prerequisite for National Reserve status. An application to the Minister of Conservation will be made upon the adoption of the Reserve Management Plan by Christchurch City Council.

In December 2012 the Christchurch City Council adopted the Takapūneke Conservation Report. The purpose of the report was to assist with the decisions relating to the reserve, to guide the development of the Reserve Management Plan and to protect Takapūneke for the present and future generations.

In the preparation of this Reserve Management Plan the Objectives, Policies and recommendations of the Takapūneke Conservation Report 2013 and the Iwi Management Plan 2013 have been consulted and incorporated where possible.

At the Christchurch City Council meeting on 7<sup>th</sup> June 2018 the Council formally adopted the Takapūneke Reserve Management Plan (Resolution: CNCL/2018/00112).

## 1.2 PURPOSE OF THE RESERVE MANAGEMENT PLAN

The Reserve Management Plan recognises the values of the reserve, provides a vision and determine the objectives and policies for the management and development of the reserve. The draft Management Plan has been developed in partnership with Ōnuku Rūnanga and is now open for public consultation. The Reserves Act 1977, section 41 (3) states:

*The Management Plan shall provide for and ensure the use, enjoyment, maintenance, protection and preservation, as the case may require, and, to the extent that the administering body's resources permit, the development, as appropriate, of the reserve for the purposes for which it is classified, and shall incorporate and ensure compliance with the principles set out in section 18, as the case may be, of this Act for a reserve of that classification.*

This Reserve Management Plan is a high level document that sets the framework for future development of the reserve in line with the Objectives and Policies of this plan. Once the Reserve Management Plan has been adopted by the Christchurch City Council a number of other plans should be undertaken to provide the designs and specifications for the development of the reserve within the parameters of this plan such as, a landscape plan, planting plan and development (implementation and construction) plan.







*Takapūneke Reserve looking towards the east with the Immigration Barracks towards the waters edge and Ōnuku Road on the right. (Photograph: John Wilson)* Location map – Takapūneke reserve, banks peninsula

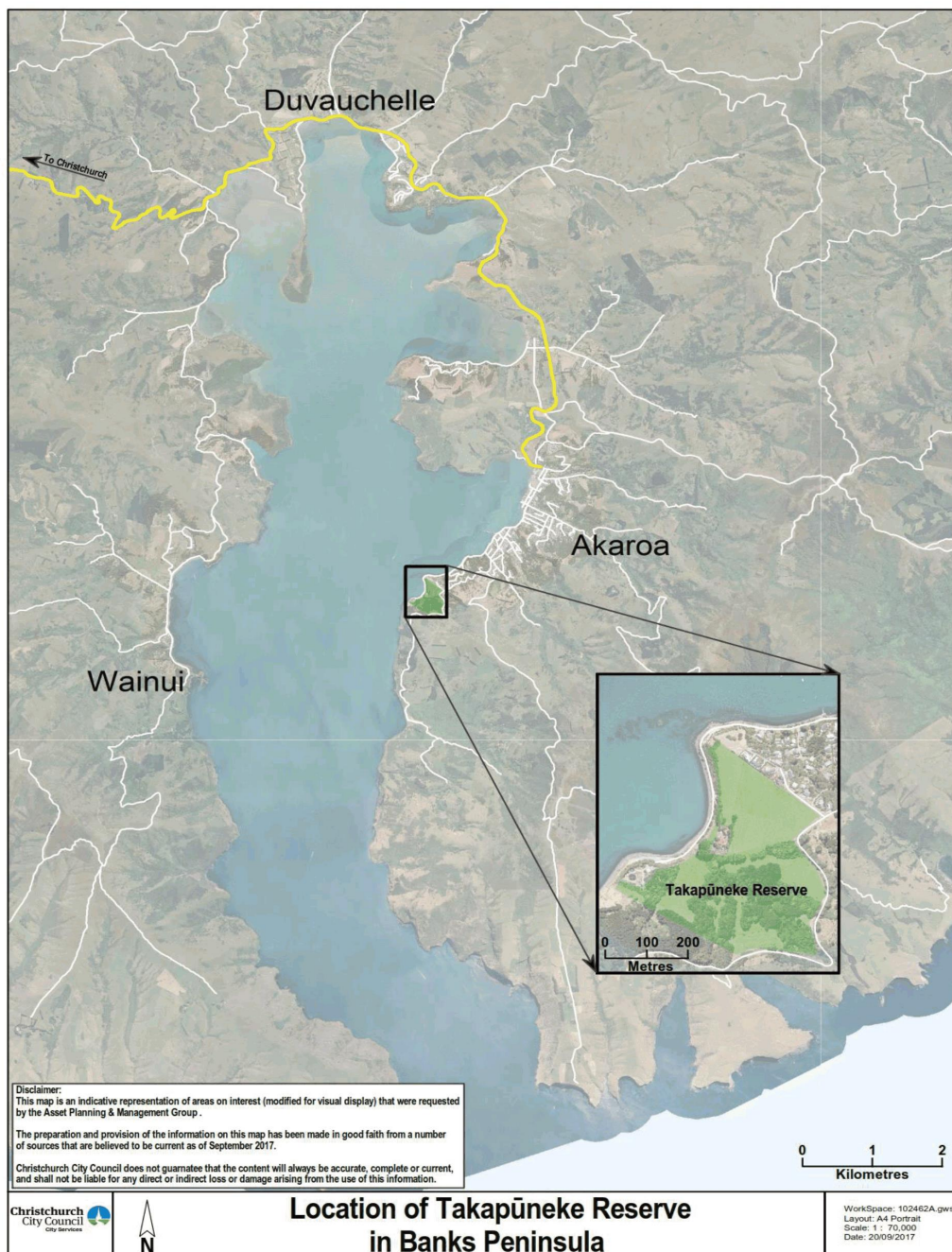
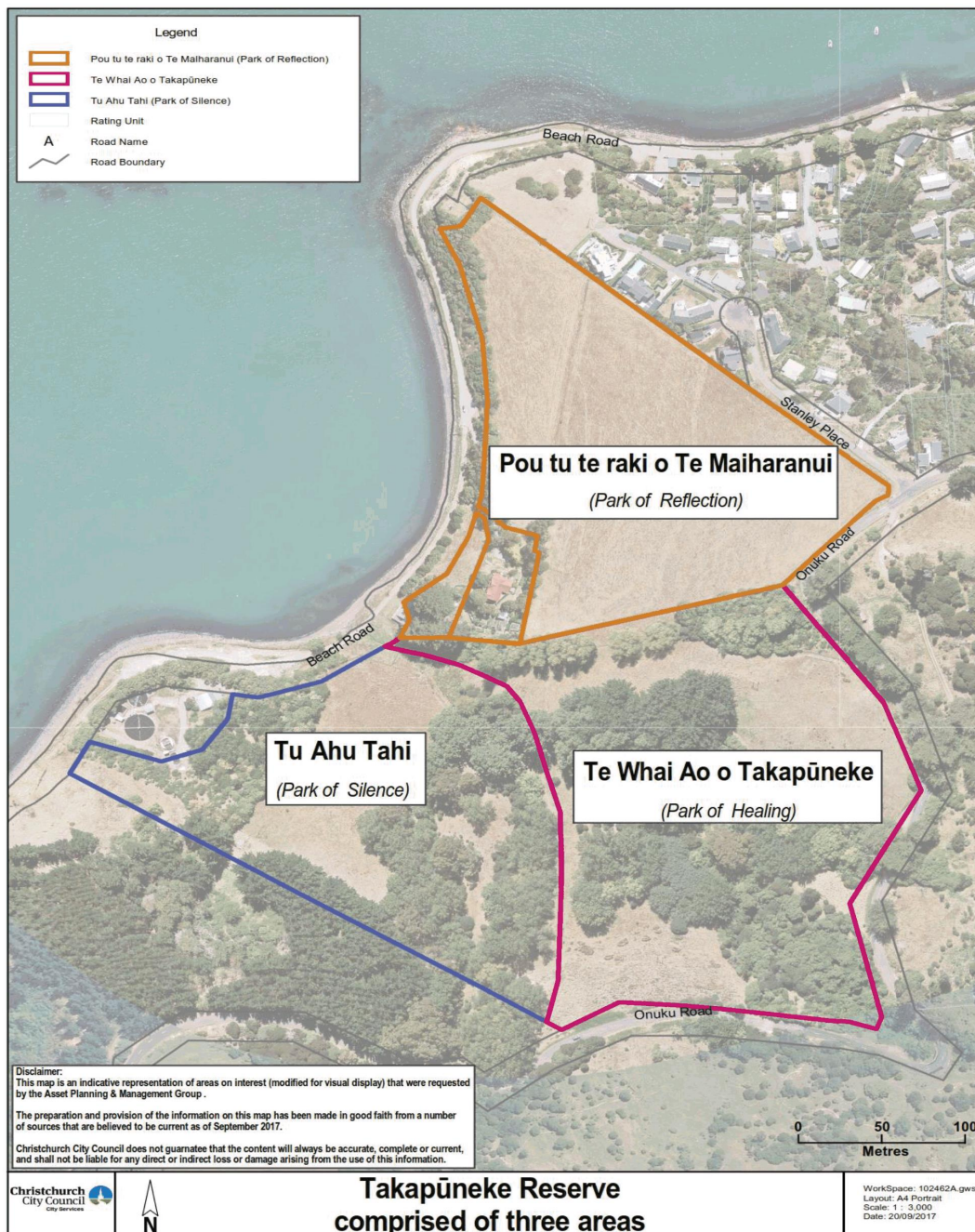




Figure 1. Location

### 1.3 RESERVE MAP – TAKAPŪNEKE RESERVE – THREE AREAS



## 2 TAKAPŪNEKE RESERVE – THE THREE AREAS

Takapūneke Reserve has special significance to Ōnuku Rūnanga, who have identified the following areas with a brief description of the key aspects of each area.

### 2.1 TU AHU TAHI (PARK OF SILENCE)

The key aspects of this area are:

- Controlled access area
- Kōhatu to be located in this part of the reserve as a scared memorial dedicated to, and connecting with, the tupuna of the land and wairua in the Tu Ahu Tahī
- Visually permeable fencing to enclose this area to reduce disturbance to archaeological features.

### 2.2 TE WAHI AO O TAKAPŪNEKE (PARK OF HEALING)

The key aspects of this area are:

- Extensive native restoration to occur within this area with a series of trails through the bush clad valleys, along the stream edge, wetland area and hillsides.
- Area to include places to pause and rest that overlook the expansive views of the harbour.
- Main nga ngūtu (gateway, entrance) structures to be located within this area.
- Native planting to be able to be harvested for cultural purposes.

### 2.3 POU TU TE RAKI O TE MAIHARANUI (PARK OF REFLECTION)

The key aspects of this area are:

- Pou tu te Raki to be located within this area.
- This area provides the opportunity to create a landscape experience that is reflective of the past, yet speaks of the future.
- A higher level of amenity to be provided by way of paths, possible sculptural terraces and landscaping.





## 2.4 RESERVE MAP - TAKAPŪNEKE RESERVE – LANDSCAPE FEATURES



Figure 2. Reserve map



### 3 VISION

The cultural, social, heritage, landscape and archaeological values of Takapūneke Reserve are recognised, protected and enhanced through the integrated co-governance of the reserve by Ōnuku Rūnanga and Christchurch City Council for future generations.



*Takapūneke Reserve – Looking from Te Wahi Ao o Takapūneke towards Beach Road and Akaroa harbour.*

## 4 MANA WHENUA VALUES

### 4.1 INTRODUCTION

Māori have maintained an identity and culture founded on a values system, which is entwined with the natural world. The Māori view aligns with other indigenous peoples world views where humanity arises from the natural environment and remains linked through genealogical ties. This relationship is embodied within the concept of whakapapa (genealogies). Whakapapa remains inherent in understanding the relationship between Māori and the natural world.

The Takapūneke Reserve Management Plan has adopted a cultural values frame work to guide outcomes in a cohesive and meaningful way that acknowledges the relationship between Mana Whenua and their ancestral land. The Reserve Management Plan provides for the active participation of Mana Whenua in the planning and management of this significant landscape.

### 4.2 MANA MOTUHAKE

Mana Motuhake has been described as the ‘maintenance of tribal identity’ and as mana ‘through self-determination and control over one’s destiny’<sup>3</sup>. Mana Motuhaka is the authority derived from the land. The authority and identity of Mana Whenua is centred on the kainga (village) and extends across the takiwā.

Mana Motuhake and tino rangatiratanga are related terms. Mana Motuhake implies a stronger connection with land and political autonomy, and tino rangatiratanga relates to what you do on the land or what you do within your society, amongst your people.<sup>4</sup> Mana Motuhake is about the ability for Mana Whenua to look after themselves and to maintain their tribal identity within their takiwā.

Traditionally tribal identity was maintained through naming of landscape features, significant people and events recalled, boundary markers placed, buildings, waka and other structures erected – overt and concealed expressions of the mana of the hapū / iwi and covered the area

<sup>3</sup>

<http://www.maoridictionary.co.nz/search?idiom=&phrase=&proverb=&loan=&keywords=mana+motuhake&search=> (retrieved 27<sup>th</sup> June 2015).

<sup>4</sup> Flavell, T. U., Hawksley, C., Howson, R., Paora, R.,m Tuiono. T. *TINO RANGATIRATANGA AND MANA MOTUHAKA, nation, state and self-determination in Aotearoa New Zealand*. School of History and Politics, Faculty of Arts, University of Wollongong





within its authority. Mana Motuhake was established and maintained by Mana Whenua.<sup>5</sup>

4.2.1 Purpose

1. To acknowledge Mana Whenua and their right to exercise authority and independence within their takiwā;
2. To be able to exercise and celebrate cultural practices and events;
3. For Mana Whenua to have a visible presence within their takiwā;
4. To enable Mana Whenua to develop an economic base to ensure livelihood for future generations, should any opportunity arise which is consistent with the Reserve Management Plan To acknowledge te Tiriti o Waitangi, The Treaty of Waitangi as the foundation of a Māori-Crown partnership and the role the historic events that occurred on Takapūneke had in the development of this significant document.

4.3 WHAKAPAPA

Whakapapa is at the heart of Māori identity. Whakapapa is embedded in the landscape and is inherent in understanding the relationship between Māori and the natural world. Self-awareness, spirituality and self-respect come directly from the relationship between Māori and the whenua.<sup>6</sup>

Whakapapa is embedded into a way of living that ensures the knowledge of genealogical lines is retained, the stories and heroic events of tupuna remembered and the knowledge that all living things descended from the same primal parents is never forgotten. Whakapapa underpins the Māori value system.

“Imagine being on a time continuum between your past and future – you stand firmly in the present yet forever thinking and making decisions on behalf of your tupuna and your unborn mokopuna (grandchild).”<sup>7</sup>

4.3.1 Purpose

1. Acknowledging and remembering ancestors, stories that are imbedded in our cultural landscapes and events that have shaped our past, present and will continue to shape our future;
2. Strengthen Ngāi Tahu identity, pride and sense of belonging;

---

<sup>5</sup> Matapopore Urban Design Guidelines 2015

<sup>6</sup> Ibid

<sup>7</sup> Orbell, M., *The Natural World of the Māori*. David Bateman Ltd, Auckland, 1985.



3. To build a deeper level of meaning and purpose into our contemporary way of living.

#### 4.4 KAITIAKITANGA

Kaitiakitanga is fundamental to the relationship between Māori and the environment, their social wellbeing, whakapapa, reo and tikanga. Kaitiakitanga refers to more than the sustainability and guardianship of the land and water ways, it also refers to the sustainability of indigenous practices and the knowledge of systems. Kaitiakitanga is the act of safeguarding the mauri (life force) of people and place ensuring that future generations are left in a better position than the current state.

Kaitiakitanga is central to Ngāi Tahu identity. Inherent in kaitiakitanga is the act of being a good kaitiaki, the inherited responsibility of ensuring you leave the natural world, culture and identity in a better place than you found it, and, an obligation of caring for Papatūānuku (mother earth), Ranginui and their descendants. Kaitiakitanga recognises that all elements of an ecosystem are related from the top of the catchment to the bottom (ki uta, ki tai – from source to sea).

The protection of mauri (life force) ensures the environment retains strength and vitality. “Mauri Ora is life-force. All animate and other forms of life such as plants and trees owe their continued existence and health to mauri. When mauri is strong fauna and flora flourish. When it is depleted and weak those forms of life become sickly and weak”.<sup>8</sup> Loss of mauri in an area or body of water impacts negatively on the mana of Mana Whenua.

##### 4.4.1 Purpose

1. To provide the ability for Mana Whenua to exercise their ancestral right to care for natural resources for present and future generations;
2. Enhancement of instream / wetland habitat and water quality
3. Enhancement of native biodiversity
4. Promotion of community based environmental management models
5. Creation of experiences and environments that foster a greater level of respect and responsibility for water use and protection.

---

<sup>8</sup> Marsden, M. Wand Henare, T.A., (1992). Kaitiakitanga: A definitive introduction to the holistic worldview of the Maori. Unpublished paper.



#### 4.5 WHANAUKATAKA

Whanaukataka is the connections between people, whether whanau, friends, community or work connections. This value expresses the belief that people need to feel a sense of connection and belonging in order to live healthy and happy lives.

Whanaukataka develops as a result of kinship rights and obligations that serve to strengthen each member of the group. It also extends to other people when a close familial, friendship or reciprocal relationship develops.<sup>9</sup>

Recognising and valuing our connections to one-another is an important part of whanaukataka, and we are all part of a multitude of different collectives.

##### 4.5.1 Purpose

1. Create an environment which supports and promotes whanau and community togetherness;
2. Create opportunities for collaboration, community activities and events;
3. To build a stronger sense of community, whanau and connectedness.

#### 4.6 MĀTAURANGA NGĀI TAHU

Mātauranga Ngāi Tahu is a multi-dimensional concept. It refers to knowledge and in a broader sense the Māori way of knowing and the relationship between this knowledge and the environment from which it has derived.<sup>10</sup> It relates to comprehension and the understanding of all things visible and invisible that exist within the universe.<sup>11</sup>

In a contemporary context, this concept relates to the transfer of knowledge from an indigenous perspective. It allows for the growth and the transferring of traditional knowledge and knowledge systems while ensuring this knowledge is safeguarded to continue on through future generations.

##### 4.6.1 Purpose

1. To educate and build understanding of the history of the site and te Tiriti o Waitangi, The Treaty of Waitangi.
2. To build and teach traditional knowledge and understanding;
3. To provide for the intergenerational transferring of knowledge;
4. Mātauranga taiao – building traditional ecological knowledge and practices.

---

<sup>9</sup> Te Aka Online Māori Dictionary

<sup>10</sup> Waitangi Tribunal Wai 262 report 'Ko Aotearoa tenai', p32

<sup>11</sup> [www.landcareresearch.co.nz](http://www.landcareresearch.co.nz). What is Mātauranga Maori? 15/05/2017



#### 4.7 TIKANGA

Tikanga are the customs and traditions handed down through the passages of time. They come from tika, things are true or right. Tikanga embodies values and what is just, rather than hard and fast rules.

Wāhi tapu means a place sacred to Māori in the traditional, spiritual, religious, ritual, or Mythological sense<sup>12</sup>

##### 4.7.1 Purpose

1. To recognize and protect the relationship of Mana Whenua and their traditions with Takapūneke as wāhi tapu;
2. To ensure the protection of wāhi tapu;
3. To ensure cultural practices are respected and integrated into the design and use of Takapūneke;
4. To ensure cultural practices are integrated into the future management of Takapūneke.



*Guests gathered for the formal blessing ceremony at Takapūneke Historic Reserve, 5 February 2010.  
(Photograph courtesy of the New Zealand Historic Places Trust).*

<sup>12</sup> <http://www.legislation.govt.nz/act/public/2014/0026/26.0/DLM4005423.html>



## 5 OBJECTIVES AND POLICIES

The objectives provide the mechanism for implementing the vision. The policies specify how the objectives are to be achieved and include actions to regulate management decisions. The objectives and policies in this section shall apply to all areas covered by the Management Plan, unless stated that they refer to a specific area.

Takapūneke Reserve is a sacred place with wāhi tapu status and is also a historic reserve under the Reserves Act 1977, forming part of the Christchurch City Council network of reserves. The following Objectives and Policies aim to provide a balance between the wāhi tapu cultural heritage associated with the site to Ōnuku Rūnanga and the operational management of the reserve by the Christchurch City Council.

To some of the residents and visitors to Takapūneke Reserve the Objectives and Policies may seem unnecessary, or very restrictive on the activities permitted on the reserve. The reason these activities are discouraged or not permitted is out of respect for the past atrocities that occurred on this site and in recognition and acknowledgement of the cultural heritage and wāhi tapu status of the reserve.



*Takapūneke Reserve - Totara fence posts – part of the historic fabric of the reserve.*





## 5.1 CULTURAL HERITAGE AND HISTORY

**Objective:** To protect and conserve the cultural and archaeological heritage values of Takapūneke Reserve.

**Policies:**

1. To recognize and protect wāhi tapu (sacred places and things) and wāhi taonga (places and things treasured and valued) of Takapūneke Reserve.
2. To undertake an archaeological assessment in Takapūneke Reserve to determine if an archaeological authority from Heritage New Zealand is required prior to any work commencing.
3. To obtain an archaeological authority from Heritage New Zealand under the Heritage New Zealand Pouhere Taonga Act 2014 prior to any work commencing that may modify or destroy any archaeological remains within Takapūneke Reserve, including the recorded archaeological site (NZAA ArchSite N37/11) as identified through an archaeological assessment. Advice should be sought from Heritage New Zealand prior to any proposed earthworks commencing in Takapūneke Reserve, such as landscaping, excavating, paths, service trenching or geotechnical testing. It is an offence to damage or destroy a site for any purpose without prior authority.
4. To develop an accidental discovery protocol in consultation with Heritage New Zealand and Ōnuku Rūnanga. Where an archaeological assessment deems an archaeological authority is not required then an accidental discovery protocol shall apply. The accidental discovery protocol will also apply where archaeological remains are uncovered through natural processes such as erosion.
5. To obtain a consent (if required) when working in proximity to the archaeological site (New Zealand Archaeological Association reference N37/11) as per the Heritage New Zealand Pouhere Taonga Act 2014.
6. To preserve archaeological and historic objects, and sites of significance to Ōnuku Rūnanga.
7. To provide a protective transparent covering over the exposed face of the Hangi Pit on Beach Road such as a Perspex or similar protective covering.
8. To regularly monitor archaeological sites to ensure the sites are not being damaged when the reserve is grazed.



## 5.2 MANA WHENUA AND TRADITIONS

**Objectives:** To recognise and protect the relationship of Mana Whenua and their traditions with Takapūneke reserve as wāhi tapu.

### Policies:

1. To enable Ōnuku Rūnanga to undertake cultural practices and exercise tikanga (customary values and practices) and kawa (rules, protocols and procedures).
2. To enable Ōnuku Rūnanga to exercise its customary rights over historic artefacts according to its protocols.
3. To develop a Tikangā and Kawa Management Plan (protocols and procedures) including work-site check lists to protect archaeological and cultural heritage sites before undertaking any maintenance or construction work on the reserve.
4. No development work shall occur on the reserve until a karakia has been undertaken.

## 5.3 NGĀI TAHU VALUES AND DUAL HERITAGE

**Objectives:** To acknowledge and make visible Ngāi Tahu values and narratives and celebrate the dual heritage of Takapūneke Reserve.

### Policies:

1. To recognise, make visible and maintain the cultural significance to Takapūneke Reserve and the wider cultural landscape to Ōnuku Rūnanga and Ngāi Tahu through design features, art, landscaping, Tē Reo Māori, signage and interpretation.
2. To develop a heritage interpretation plan for both Māori and European history of the reserve. The plan should reflect the cultural and historical significance of the reserve. The interpretation should describe the history of the site and promote an appreciation of the wāhi tapu and wider historical significance and the relationship between the events that occurred at Takapūneke Reserve and the Treaty of Waitangi.
3. To use both Tē Reo Māori and English in interpretation and signage.
4. To install one or more Pou (upright post) marker(s) in the reserve at the corner of Ōnuku Road and Stanley Place, which will be visible from Ōnuku Road and the harbour looking back to the land.
5. To install an ngā ngutu (gateway) at the two main entrances to the reserve; at Beach Road and from the top car park off Ōnuku Road.





*Red House Bay c1900. The barracks is visible in the centre of the photograph. (Photograph by Jan Shuttleworth, from Takapūneke and Green's Point, Akaroa Civic Trust, 2010).*

#### 5.4 TU AHU TAHU – PARK OF SILENCE (CONTROLLED ACCESS AREA)

**Explanation:** An area within Takapūneke Reserve has significant meaning to Ōnuku Rūnanga. This area requires additional protection to ensure archaeological features are not further degraded.

**Objective:** To protect and minimise disturbance in the area that was associated with the kāinga that existed up until the events that occurred in 1830.

**Policies:**

1. To control public access to the Tu Ahu Tahi - Park of Silence (Controlled Access Area) unless permission has been granted by Ōnuku Rūnanga.
2. To obtain permission from Ōnuku Rūnanga and the Council prior to undertaking any maintenance or development activities in the Tu Ahu Tahi - Park of Silence (Controlled Access Area).
3. To restrict any removal, clearance or disturbance of the vegetation along or in the waterway unless permission has been granted by Ōnuku Rūnanga and the Council prior to commencing any work.

4. To install a kōhatu (rock) as a symbolic object as a scared memorial dedicated to, and connecting with, the ancestors of the land and wairua in the Tu Ahu Tahī – Park of Silence (Controlled Access Area).
5. To use visually permeable fencing to enclose this area to reduce disturbance to archaeological features, while still allowing views into the area.

Takapūneke Reserve - Pou tu te raki o Te Maiharanui



*Takapūneke Reserve - Some of the Key Viewing areas from the top of the reserve adjacent to Onuku Road looking across the Akaroa harbour (refer 5.5 Viewing Areas below)*

## 5.5 KEY VIEWING AREAS

**Explanation:** Takapūneke Reserve within Red House Bay was a major trading post and settlement for Ngāi Tahu Ūpoko Ariki Te Maiharanui up until the events of 1830.

**Objective:** To retain and enhance existing view shafts and viewing points from the reserve to Akaroa harbour, the western bays Tuhiraki (Mt Bossu), Onawe Peninsula and surrounding ridgelines.

### POLICIES:

1. To retain the view shafts from the key viewing areas identified within the reserve by managing the trees and shrubs through pruning, thinning and selective clearing. This work is to be defined by the Council Arborist and Ranger, and shall follow ecological best practices. Any selective clearing is to be in consultation with the Co-Governance Group.
2. To ensure unrestricted access to the viewing areas by maintaining the paths to provide all-weather access clear of encroaching vegetation.
3. To provide seat(s) at the key viewing areas and interpretative panel(s) or signage in English and Tē Reo Māori.





## 5.6 VEGETATION AND LANDSCAPE

**Explanation:** The gullies in the reserve were planted with quick growing exotic trees, such as poplar, gums and pine to stabilise the banks and slow down water erosion. Many of the exotic trees are starting to reach maturity. Over the next few years the intention is to cut down the exotic trees leaving their roots to hold the banks. Some of the fallen trees can remain where they fall providing they do not block any waterways. The gullies are to be planted with native plants indigenous to this part of Akaroa, with the intention the native plants will provide bank stability and erosion control.

**Objective:** To retain and encourage native vegetation in the reserve and in particular the re-vegetation of the gullies using locally sourced indigenous native plants. NB: the private property referred to as the Red House is excluded.

### Policies:

1. To prepare a landscape plan for Takapūneke Reserve.
2. To provide planting to screen neighbouring properties from any paths created where possible, whilst also ensuring that such planting allows for existing view shafts from those neighbouring properties to be maintained, in consultation with the residents.
3. To prepare a plant list of native plants indigenous to this part of Akaroa harbour suitable to plant in the reserve. The list should include trees, shrubs, ground covers and wetland plants.
4. To prepare a planting plan that supports the landscape plan and includes a time-line to plant the gullies with indigenous native plants.
5. To use only native plants from locally sourced seeds or cuttings indigenous to the area that are from local Akaroa ecological district genetic stock as listed in the plant list prepared for Takapūneke Reserve.
6. To develop a staged plan to cut down the exotic trees and plant the gullies using locally eco-sourced plants. The trees stumps are to be left to stabilise the banks and reduce soil erosion.
7. To use stock proof fences to keep livestock out of the gullies enabling indigenous native plants to be planted and to become established.
8. To plant species that have mahinga kai values e.g. native plants with rongoā (medicinal qualities) and plants that attract manu (birds) and plants that are for traditional crafts such as weaving, tools and other objects.
9. To permit cultural harvesting of native species with the prior consent from Ōnuku Rūnanga.
10. To retain the wetland and restrict any maintenance work within the wetland area until consent is granted from Ōnuku Rūnanga and the Council Ranger to work in this area.
11. To monitor the reserve for noxious and undesirable plants and implement an eradication programme annually or more often if required.
12. To prepare a maintenance schedule for the large macrocarpa trees growing in the reserve on the southern side of the Red House to ensure people are safe when



- walking within the canopy area or working around the trees. If the Council determines the trees are unsafe and need to be removed at some future time, replacement trees should be considered to provide shelter to the Red House.
13. To remove faster growing trees originally planted as a nursery crop to shelter slow growing native trees such as Totara, Ngaio.
  14. To prepare and regularly monitor the water quality in the gullies for contaminants from leachates and dumping of illegal rubbish.

#### 5.7 ANIMALS, BIRDS AND INVERTEBRATES

**Explanation:** The landscape of Takapūneke Reserve over the decades has changed to become more suitable for grazing with fewer areas retained in native bush. To encourage more biodiversity within the reserve, a native plant regeneration programme should be developed and implemented through stages, to provide suitable habitats for the peninsula's fauna.

**Objective:** To encourage biodiversity and retain birds and invertebrates' habitat for native and non-native species in an environment ecologically beneficial to the reserve and to prohibit domestic animals in the reserve with the exception of sheep within designated areas.

#### Policies:

1. To prohibit dogs in the reserve in accordance with the Dog Control Bylaw 2015. Dogs cannot be walked through or let loose in the reserve.
2. To use sheep to maintain the open grassed areas in the reserve. The sheep shall be kept out of any native revegetation areas. Cattle, horses, goats or any other grazing animals are not permitted in the reserve or allowed to graze areas within the reserve.
3. To develop a regeneration programme for native flora that encourages indigenous animals, birds and invertebrates in conjunction with the landscape plan and planting plan.
4. To undertake regular methods of predatory mammal control within the reserve. Any programme of control must be approved by the Ōnuku Rūnanga and Council.
5. To retain some timber from felled trees (e.g. the bowl of the tree or the creation of a windrow of logs) in areas that can remain undisturbed from visitors as habitat for invertebrates to encourage biodiversity, such as areas planted for revegetation.
6. To plant and retain plant species that provide nectar, fruit and/or seed for native bird species and invertebrates.





Turepo *Streblus heterophyllus* may be the only pre-European tree remaining at Takapūneke Reserve



Green mistletoe *Ileostylus micranthus* on a willow branch at Takapūneke Reserve

## 5.8 RECREATION

**Explanation:** The spiritual significance of Takapūneke to Mana Whenua as a wāhi tapu is considerable. It is the wish of Mana Whenua that the reserve is a place of reflection, a place to feel closer to and connect with their tupuna, and a place to share their stories and history with the wider community and others who wish to learn. As such, activities on the reserve are to be passive in nature and tikanga is to be observed.

Takapūneke Reserve is a wāhi tapu site and out of respect for the Mana Whenua eating and drinking on the reserve is not permitted.

Walking as an activity is increasing and for many visitors staying in Akaroa a daily or evening walk around the town and along the water's edge is an enjoyable form of recreation. There are two formal entranceways proposed for Takapūneke Reserve, one from Beach Road next to the Immigration Barracks and another from the car park off Ōnuku Road. Two informal entrances are also proposed into the reserve primarily for local residents and visitors out walking who may like to walk around the reserve. One is from Britomart memorial and the other from the viewing point in the reserve at the corner of Stanley Place and Ōnuku Road. These four entrances into the reserve will enable people to walk around the reserve or use the reserve as part of a walking loop from the township.

Information signs showing adjoining walks and links are proposed at the two informal entrances for people walking from the Takapūneke Reserve such as, to the Garden of Tane and local cemeteries, or along the water's edge to the Light House and Akaroa Township.



**Objective:** To respect the wāhi tapu status of Takapūneke Reserve and only visit or use the reserve for passive recreation.

**Policies:**

1. To encourage visitors and local residents to walk around the reserve and include the reserve as part of the many walking trails around the township.
2. To prohibit food being brought or consumed onto the reserve out of respect for the site as wāhi tapu.
3. To not provide any Litter bins in the reserve as it is considered a litter free reserve. Visitors are expected to take any rubbish they might bring onto the reserve away with them.
4. To not provide formal play equipment or areas for active recreation or formal sports.
5. To prohibit mountain bikes, motor bikes or cycles on or through the reserve.
6. To prohibit walking dogs through or on the reserve in accordance with the Council Dog Control Bylaw.
7. To prohibit leading or riding a horse or pony on or through the reserve, or any other animal being brought onto the reserve (except sheep for grazing).
8. To prohibit camping (meaning to reside in or sleep in a structure, tent, caravan or campervan) within the reserve, in accordance with the Parks and Reserves Camping Bylaw 2008.

## 5.9 SIGNAGE

**Explanation:** The history of Takapūneke Reserve makes it unique to New Zealand. The Ōnuku Rūnanga in partnership with the City Council, would like to acknowledge the special significance of the area through signage sympathetic with the surrounding natural environment and reflecting the cultural heritage of the reserve. This signage would be in addition to the City Council's standard park signs.

The Council has adopted a sign standard for signs in its parks and reserves. The official name of the reserve and any regularity or official notification signs such as Council bylaw(s), health and safety (e.g. no golf) must conform to the Council's sign standards. The District Plan should also be consulted before designing or placing signs within or on the boundary of a Council reserve.

Directional and interpretation signs are key tools for providing information to visitors and local residents entering and leaving Takapūneke Reserve. The signs and information panels can assist visitors with an understanding of the significance of Takapūneke Reserve. The signs can also provide information on other attractions and points of interest outside the reserve such as, Ōnuku Marae, the Garden of Tane, the Lighthouse and local cemeteries.





**Objective:** To provide signage that reflects the cultural values and narratives of Mana Whenua, the cultural heritage of the reserve and the significance of the site to Mana Whenua, Ngāi Tahu whānui, local communities and residents of the City.

**Policies:**

1. To create a sign design unique to Takapūneke Reserve, which reflects the historical and cultural significance of tāngata whenua and European settlers. The design style may be used in conjunction with and not instead of, the Council's signage standards.
2. To use the design style created for the reserve for interpretation, directional and information signs on the reserve in conjunction with the Council's signage guidelines.
3. To have all regulatory signs conform to the Council signage guidelines, bylaws, standards and policies.
4. To locate signage at the two main entrances clearly indicating to visitors where and how to move around the reserve. The signs are to follow the design style created for the reserve.
5. To include information and directional signs at the two formal and informal entrances to Takapūneke Reserve with information on walking trails to adjoining sites such as, the Garden of Tane, local cemeteries, and along the water's edge to the Light House and Akaroa Township
6. To seek advice on the historical content for the interpretation and information signs to reflect both Tangata Whenua and European heritage, which may be obtained from Ōnuku Rūnanga, Heritage New Zealand, Akaroa Civic Trust and the Council Heritage Planner and approved by the Takapūneke Reserve Co-Governance Group (or similar).
7. Commercial or advertising signage (temporary or permanent) shall not be permitted on the reserve out of respect for the Wāhi Tapu status and in compliance with the District Plan.
8. All signs (temporary or permanent) within or on the boundary of Takapūneke Reserve shall be installed only with the consent from both the Ōnuku Rūnanga and the Council and in compliance with the District Plan.

#### 5.10 VEHICLE PARKING

**Explanation:** Out of respect for the wāhi tapu status of the reserve the only area vehicles are permitted, including parking is on the closed and capped landfill site (the old rubbish dump) accessed from Ōnuku Road. An additional car park is to be developed at the base of the reserve on legal road (Beach Road). Maintenance and service vehicles should only be permitted on the reserve once the contractor has completed the protocol for entering a wāhi tapu site. No other vehicles will be permitted onto the reserve.

Vehicle parking is not provided or encouraged near the corner of Stanley Place and Ōnuku Road due to the poor vehicle site lines along Ōnuku Road and the narrow road verges on both



roads. Vehicle parking signs directing vehicles to the car park on the capped landfill site should be visible from Ōnuku Road near Stanley Place, to discourage vehicles from stopping or parking near this intersection.

**Objective:** To observe the wāhi tapu status and restrict vehicle parking to only one location on the closed landfill site in the reserve, accessed from Ōnuku Road.

**Policies:**

1. To construct a primary vehicle car park on the capped Council landfill site accessed off Ōnuku Road, noting the requirement for possible improvement to Ōnuku Road to achieve traffic and pedestrian safety relating to access and entry to the Reserve.
2. To develop an additional smaller scale vehicle parking area if required a long Beach Road adjacent to the reserve in compliance with any Bylaw, District Plan and Resource Consent requirements, and subject to approval from the local Community Board.
3. To prohibit any other areas on the reserve being developed or used for vehicle parking.
4. All maintenance, service and contractor vehicle drivers shall only be permitted to drive onto the reserve once they have completed the protocol and complied with the Tikangā and Kawa work-site check list for entering a wāhi tapu site.



*Takapūneke Reserve - Looking from Beach Road across Te Wahi Ao o Takapūneke, between the trees to the capped knoll of the landfill site – proposed area for the central path (refer below to section 5.11 Access and Paths, Policy 2. i.)*



### 5.11 ACCESS AND PATHS

**Explanation:** In recognition of the wāhi tapu status, respect for tupuna and for tikanga the public and visitors to the reserve are encouraged to use the network of paths instead of wandering over the reserve.

Where possible an all-weather accessible path will be provided but due to the steepness of the reserve and numerous gullies running down the site it may not be possible to have a fully accessible path linking the main areas of the reserve. For example the slope of the reserve is too steep in places to have a 1:12 slope accessible for wheelchairs and steps will be required to link the Beach Road entrance up to the Ōnuku Road entrance.

People visiting the Britomart memorial or walking along Ōnuku Road near the intersection of Stanley Place from Akaroa, may wish to enter the reserve from these locations. Informal entrances are proposed at both of these locations, which will link up to the path system within the reserve. Note: vehicle parking is discouraged near the junction of Stanley Place and Ōnuku Road due to the limited sight lines and narrow road verges. Directional signs will direct visitors to the Ōnuku Road car park (on the capped landfill site) in the reserve.

**Objective:** To provide two formal nga ngūtu (entrance ways) into the reserve and a path network system around the reserve, which will link up with two informal pedestrian entrances to the reserve.

#### Policies:

1. To have two formal entrances to the reserve; one from Beach Road next to the Immigration Barracks building and the other from the top car park off Ōnuku Road. Both entrances are to have information signs and nga ngūtu (gateway) structures to inform visitors of the historic and cultural information associated with the reserve.
2. To have two informal entrances into Takapūneke Reserve primarily for pedestrians entering the reserve from Britomart memorial and the corner of Stanley Place and Ōnuku Road
3. To create a path network within the reserve:
  - i. Entrance paths: a central path linking the Beach Road entrance (adjacent to the Immigration Barracks building), to the entrance at the top of the reserve, off the top car park at Ōnuku Road. Due to the steepness of the site steps may be required in places. This path is not recommended for disabled users due to its steepness and steps.
  - ii. A path linking the Britomart Monument to Stanley Place through Takapūneke Reserve to the corner of Ōnuku Road and Stanley Place (future location for Pou, signage and seat). This path is to continue within the reserve to the top car park off Ōnuku Road. If possible a fully accessible all weather path for disabled users should be constructed.
  - iii. A second path is to lead from the Britomart Monument through Takapūneke Reserve, above Beach Road and past the back of the Red House to join the main central path that links Beach Road car park with the top car park off Ōnuku Road. If possible a fully accessible all weather path





- for disabled users should be constructed, although it may be too steep where it joins the central path.
- iv. An unsealed path branching off the central path and leading south across the gully to the southern open grass clearing below Ōnuku Road. This path is not recommended for disabled users due to its steepness and steps.



*Immigration Barracks next to Beach Road*

#### 5.12 BUILDINGS, FURNITURE AND STRUCTURES

**Explanation:** The Immigration Barracks is the only remaining building on Takapūneke Reserve (the Red House is not considered to be part of the reserve at this time). The Immigration Barracks has historic significance and the Takapūneke Conservation Report provides a section on the building with policies for restoration work. The following policies have been summarised from the Conservation Report. The Conservation Report should be consulted before considering any work to the Immigration Barracks.

The Immigration Barracks could be used for educational, wānanga (learning) and training purposes such as courses on the Treaty of Waitangi and the cultural history of Takapūneke Reserve.



The only other type of building that may be considered in the future and situated just outside the reserve could be a public toilet. A suitable location could possibly be adjacent or within the grounds of the Akaroa Sewerage Treatment Plant.

Any structures proposed on Takapūneke Reserve will require prior consent from Ōnuku Rūnanga and the Council, such as signs, furniture, Pou and entrance features.

**Objective:** To provide and maintain existing buildings, and to provide and maintain furniture and structures that are culturally and environmentally sensitively designed and complement the natural rural location.

**Policies:**

1. To retain the former Immigration Barracks building in its present location within the reserve.
2. To consult with Heritage NZ, Akaroa Museum, Akaroa Civic Trust, the Takapūneke Conservation Report and the City Council's Heritage Advisor on any proposed plans to alter, replace or change either the interior or exterior of the Immigration Barracks. For example if water, wastewater, electricity or toilets were to be installed in the building, or the colours of the building changed if it were to be repainted, consultation would be required.
3. To maintain and retain structural exterior of the Immigration Barracks, such as weatherboards and trim, and replace internal and external items recently added that do not match the original form, such as doors and linings.
4. To sympathetically adapt the interior of the immigration barracks for education and information purposes while maintaining the cultural heritage fabric of the building.
5. To consider a proposal to incorporate public toilets (if possible and desirable) within the interior of the Immigration Barracks or as an addition to the rear of the building providing any addition is designed to retain the character and style of the original building. Any addition is to be date stamped.
6. To locate a public toilet, if not within or as an addition to the Immigration Barracks, on the legal road adjoining Takapūneke Reserve or adjacent or within the grounds of the Akaroa Sewage Treatment Plant.
7. To prohibit any new buildings being built or placed within Takapūneke Reserve, either temporary or permanent.
8. All new structures and site furniture including interpretation elements, seats, signs and fences shall be sympathetic to the heritage values, natural setting and rural character of the area. The location of any such items must be approved by the Co-Governance Group for Takapūneke Reserve.



### 5.13 ŌNUKU LANDFILL SITE - CAPPED

**Explanation:** The landfill site was completed and capped in 1999. Leachate from the landfill is piped to the sewage treatment plant. The large flattish surface of the landfill site is ideal for a car park with an entrance off Ōnuku Road. The capped surface of the landfill is not to be damaged or penetrated. Any fence, structures or plantings around the car park must be outside the area of the capped landfill site.

The capped landfill site is a Hazardous Activities and Industries List (HAIL) site, which is land identified as being potentially contaminated. The Council has further information for any development work in this area that will need to meet all health and safety precautions for working in a HAIL site.

**Objective:** To develop a car park on top of the capped and closed landfill site, accessed from Ōnuku Road.

**Policies:**

1. To retain the closed and capped landfill area as a future visitor car park for Takapūneke Reserve.
2. To monitor the leachate from the landfill site and take remedial action if any leachate should occur outside the designated area.
3. To develop a nga ngūtu formal entranceway into Takapūneke Reserve from the car park with appropriate signage and an entrance feature, if desirable.
4. To include in the reserve screen planting around the perimeter of the car park, to screen where possible the parked vehicles in the car park from the primary path in the reserve. Some view shafts from the car park across the reserve to the harbour should be retained. All plants must be outside the area of the capped landfill.
5. To regular monitor the pipe connections for breakages and spillage from the closed landfill site.







*Takapūneke Reserve – Looking from Te Wahi Ao o Takapūneke to the flat capped area of the landfill site, proposed for a car park. Electricity power cables crossing the reserve.*

#### 5.14 INFRASTRUCTURE AND TECHNOLOGY

**Explanation:** Overhead power cables cross the south western part of Takapūneke Reserve. Visually the cables conflict with the rural, unbuilt nature of the reserve. It would be desirable to either remove or underground the over-head power cables from the reserve, if feasible. Either suggestion may not be possible due to costs or the issue of undergrounding the cables and traversing two gullies resulting in the insulated cables being within human reach as they cross the gully. Undergrounding the cables may also raise concerns or conflict with the wāhi tapu status of the reserve and archaeological concerns. All of these issues would need to be addressed if the proposal was to proceed.

**Objective:** To incorporate infrastructure and technology were possible, while respecting wāhi tapu, cultural, environmental and archaeological values of the reserve.

**Policies:**

1. To re-direct the existing above ground power and telephone lines and water reticulation from going through the reserve to outside the perimeter of the reserve, should the opportunity arise e.g. via the road network.
2. To restrict any additional power lines or infrastructure services going through the reserve.
3. To investigate if possible the undergrounding of any of the existing infrastructure services that go over the reserve without compromising or damaging the heritage or archaeological values of the site. An archaeological assessment shall be undertaken on the proposed route through the reserve before commencement of any work onsite.
4. To permit the placement of above ground water storage tank(s) to provide water for fire safety activities in consultation with Ōnuku Rūnanga and the Council.

**5.15 CO-GOVERNANCE AND NATIONAL RESERVE STATUS**

**Explanation:** The City Council and Ōnuku Rūnanga are both connected and committed to the Takapūneke Reserve, but in different ways. Takapūneke Reserve is significant to Ōnuku Rūnanga for the cultural heritage, tupuna and whakapapa connections. For the City Council Takapūneke Reserve is a Historic Reserve and the maintenance and future development of the reserve is on behalf of all the residents in the City and visitors to the area including the Ōnuku Rūnanga.

The future management and development of the Takapūneke Reserve affects both the Rūnanga and the Council. To ensure the interests of both parties are represented and considered, a Co-Governance Group with representatives from both organisations is being proposed for the future management and development of Takapūneke Reserve.

The City Council made a commitment in the Takapūneke Conservation Report to attain National Reserve status for Takapūneke Reserve. The Akaroa/Wairewa Community Board resolved at its meeting on 16 February 2015 to notify the Minister of Conservation of the intention to apply for National Reserve status for Takapūneke Reserve.

The Co-Governance Group will work with the adjoining neighbours to ensure they are consulted on any changes or developments in the reserve and they have an opportunity to comment and participate in any developments.

**Objective:** To establish a co-governance group for Takapūneke Reserve to provide guidance for the management and development of the reserve in accordance with the Takapūneke Reserve Management Plan.





**Policies:**

1. For the Christchurch City Council to make a formal application to the Minister of Conservation to apply for National Reserve status for Takapūneke Reserve as per the Reserves Act 1977 section 13.
2. To establish a Co-Governance Group once the Takapūneke Reserve Management Plan has been adopted by the City Council. The Co-Governance Group is to continue until Takapūneke Reserve has been declared a National Reserve in compliance with Section 13, Reserves Act 1977. Once Takapūneke Reserve has attained National Reserve status the future management structure of the reserve shall be in discussion with the Minister of Conservation or their representatives.
3. To establish a Co-Governance Group with a core number of equal representatives from Ōnuku Rūnanga and the City Council. The City Council representatives is to include an elected local Community Board member. Assistance may be requested from supportive groups or organisations when the core representatives believe these will be beneficial to the management of the reserve. The City Council would continue administrating the operation and management of the reserve.
4. To have the Terms of Reference for the Co-Governance Group endorsed by Ōnuku Rūnanga and the local Community Board.

**5.16 THE RED HOUSE (CURRENTLY IN PRIVATE OWNERSHIP)**

**Explanation:** The Reserve Management Plan has taken a slightly unusual step of including Objectives and Policies for a property that is in private ownership. This property is enclosed by Council owned Historic Reserve land that comprises Takapūneke Reserve. The site of the Red House would have been originally part of the Takapūneke trading site and Māori settlement before the massacre in 1830.

If the private property should become available to purchase it would be advantageous to the Council and Ōnuku Rūnanga if the site could be included within the area covered by the Takapūneke Reserve Management Plan. Should that possibility eventuate the following Objectives and Policies have been included to provide direction for the management of the area.

**Objective:** To include the area of the Red House within the Takapūneke Reserve Management Plan and retain the historic character of the house and garden representative of the original era of the property.

**Policies:**

1. To obtain if possible, the Red House should it become available to the City Council and/or Ōnuku Rūnanga as part of the area covered by the Takapūneke Reserve Management Plan as a venue for education, information, meetings and community based activities, including public toilets.



2. To request the Red House site is rezoned from Residential Banks Peninsula to Open Space Community Parks under the Christchurch District Plan should the property be obtained by the Christchurch City Council.
3. To maintain and retain the structural exterior of the Red House including the distinctive red colour.
4. To maintain and retain the external buildings within the boundary property of the Red House as part of the historic fabric of the site.
5. To vest the Red House as Historic Reserve under the Reserves Act 1977, in recognition of its cultural and historic significance to Takapūneke, should the City Council obtain the property.
6. To maintain the garden around the Red House and in particular the exotic plant species, with succession planting of exotic plant species in the garden should the property be obtained by the Council or Ōnuku Rūnanga.



*Takapūneke Reserve – looking from Te Wahi Ao o Takapūneke towards Ōnawe – Views to be retained.*



## 6 ISSUES

### 6.1 PROTECTING CULTURAL HERITAGE, WHAKAPAPA AND HISTORY

Takapūneke Reserve is rich in cultural heritage and history. This has been acknowledged with the classification of Historic Reserve (Reserves Act 1977) and the wāhi tapu status over the site.

There has always been an issue with the public unintentionally damaging artefacts or using the reserve for activities that would be disrespectful to Mana Whenua. There is also part of the reserve that has special significance to Mana Whenua, Tu Ahu Tahi - Park of Silence which has controlled access to the public for cultural reasons.

For these reasons the public have not been encouraged to visit Takapūneke Reserve. To many people the reserve would appear to be a rural paddock as it has been grazed by sheep for many years. There has been no development on the reserve that either identifies the area as a reserve or encourages the public to enter the area, such as paths, entrance signs or regularly maintained grassed areas.

There is an issue with the construction of paths, installation of seats, or any work that requires digging into the soil until appropriate areas can be identified where there will be no damage to artefacts, or the cultural heritage of the site. The Reserve Management Plan in conjunction with an archaeological assessment and an accidental discovery protocol will enable a landscape plan to be undertaken to identify suitable areas within the reserve for any development work.

The Takapūneke Reserve Management Plan will provide guidance and regulations around the development of the reserve to acknowledge, protect and manage any work taking in consideration the restrictions of the site as a cultural heritage site. The public will be encouraged to visit the reserve when an entranceway, signage, tracks and paths have been constructed to guide people around the site.

Takapūneke Reserve for many years has been generally unknown to the public, in particular:

1. The history and cultural significance
2. The role Takapūneke Reserve played in the Treaty of Waitangi
3. The cultural significance and the relationship between Takapūneke Reserve and the wider cultural landscape of the peninsula.
4. The history and cultural significance of the site until recently, has historically been unrecognized by Council resulting in a sewage treatment plant and landfill site being located on Takapūneke Reserve. The sewage treatment plant was located directly on an area that was the kāinga (village) and trading post of Te Maiharanuui, and destroyed an archaeological site.



## 6.2 RECREATION

Recreation activities with the exception of walking (and siting) are not encouraged or permitted in Takapūneke Reserve. There has been an issue that if the reserve was promoted to the public as a Council reserve, without information on the reserves status or significance to Ōnuku Rūnanga, inappropriate recreational activities would unintentionally be carried out on the reserve.

The reserve is classified under the Reserves Act 1977 as a historic reserve due to its cultural heritage and status as a wāhi tapu site. Out of respect to Ngai Tahu and the special tikanga to Ōnuku Rūnanga, many activities and functions usually carried out on a Council owned public reserve cannot be undertaken on Takapūneke Reserve. The cultural heritage and archaeological significance of the reserve has been recognised and acknowledged by Heritage New Zealand and Akaroa Civic Trust.

Takapūneke Reserve is a wāhi tapu site and out of respect to the Mana Whenua, eating and drinking on the reserve is not permitted. Other than walking or resting on one of the seats in the reserve all other recreation facilities and activities are not permitted on this reserve, such as playgrounds, events, picnic areas and walking dogs.

A landscape plan and interpretation information are proposed in the Management Plan that will provide guidance to the development and use of the reserve.

## 6.3 VEGETATION AND LANDSCAPE

The Reserve Management Plan has highlighted the need to develop a landscape plan with the aim of reintroducing native plants eco-sourced from the local area. The reserve has been grazed by stock to maintain the grass and the gullies planted with exotic trees to stabilise the banks. The issue is now to reduce the areas grazed and to replace the exotic trees with natives through the guidance of the Reserve Management Plan.

Many of the gullies in the reserve were planted with fast growing exotic trees to stabilise the banks and slow down erosion in the 1980s. During this time only one of the gullies was fenced to restrict stock grazing and this has enabled native plants to regenerate, along with a few exotic weeds. The Management Plan is proposing to fell the exotic trees in the gullies, leaving the roots to hold the banks and under plant the gullies with native plants eco-sourced from the local area. The gullies would be fenced to keep stock out to allow the plants to establish.

The majority of the reserve is grazed by sheep to maintain the grass. The Management Plan is proposing a landscape plan is developed for the reserve. One of the main considerations for the landscape plan is to reduce the amount of area being grazed and to slowly re-introduce native tussock, shrubs and trees.





#### 6.4 CAR PARKING

Vehicles driving and/or parking on the reserve would give rise to a cultural issue. This activity would be disrespectful to the Rūnanga as a wāhi tapu site. Public vehicles are not allowed on any Council reserves unless specific permission has been granted.

There is a closed and capped landfill site on the western side of Takapūneke Reserve. The cap of the landfill site cannot be pierced which restricts the development of the area for landscaping. However, the landfill site could be used as a car park with access from Ōnuku Road, providing any car barriers or fences are placed outside the landfill capped area.

Using the capped landfill site for a car park would provide a way for the public to park off the road while they visit the reserve. A car park on the capped landfill can be constructed on part of the reserve that has already been desecrated without the need to dig into or disturb any of the sacred areas in the reserve.

### 7 LONG-TERM PLAN (LTP) DISCLAIMER

No policy will be implemented as a project as recommended in the Reserve Management Plan unless the expenditure is provided for through the Long-Term Plan.

Some of the recommendations may be funded through bulk sums allocated for generic park operational and capital expenditure items.

### 8 RESOURCE INFORMATION

#### 8.1 PURPOSE OF THE RESERVE

The reserves (Takapūneke, Green's Point and Beach Road Park) are classified as historic reserves under Section 18(1), Reserves Act 1977. The Act describes the purpose of historic reserves as:

*Protecting and preserving in perpetuity such places, objects, and natural features, and such things thereon or therein contained as are of historic, archaeological, cultural, educational, and other special interest.*

The Act under 18(2)(c) in particular states:

*Where scenic, archaeological, geological, biological, or other scientific features, or indigenous flora or fauna, or wildlife are present on the reserve, those features or that flora or fauna or wildlife shall be managed and protected to the extent compatible with the principal or primary purpose of the reserve.*



And section 18(2)(e) is also of relevance to Takapūneke, which states:

*Except where the Minister otherwise determines, the indigenous flora and fauna and natural environment shall as far as possible be preserved providing that nothing in section (c) of this subsection shall authorise the doing of anything with respect to fauna or wildlife that would contravene any provision of the Wildlife Act 1953 or any regulations or Proclamation or notification under that Act, and nothing in this subsection shall authorise the reserve the doing of anything with respect to archaeological features in any reserve that would contravene any provision of [the Historic Places Act 1993].*

## 8.2 LAND TENURE, LEGAL STATUS AND CLASSIFICATION

The following land parcels shown below are within the area referred to as Takapūneke Reserve. An Objective has been included in this Reserve Management Plan to extend the area known as Takapūneke Reserve (Lot 1 DP 76825) to include all of the three land parcels described below:

### Takapūneke Reserve

On 9<sup>th</sup> April 2009 the area referred to as Takapūneke Reserve (Lot 1 DP 73274 - 9.6087 ha) was changed from a local purpose (historic) reserve to a historic reserve and notified in the New Zealand Gazette (Notice no. 2953, NZG no.48, 9 April 2009 page 1182).

Legal description	Gazette Notice / Certificate of title	Classification	Area
Lot 1 DP 76825	NZ Gazette 9 April 2009 No. 48 page 1182	Historic Reserve	9.6087 ha

### Green's Point

On 12<sup>th</sup> May 2009 Christchurch City Council resolved that areas referred to as Green's Point (Lot 1 DP 7324 - 4.0611 ha) be declared a historic reserve under the Reserves Act 1977. This resolution was notified in the New Zealand Gazette (Notice no. 4671, NZG no.76, 28 May 2009, page 1797).

Legal description	Gazette Notice / Certificate of title	Classification	Area
Lot 1 DP 73274	NZ Gazette 28 May 2009 No. 76 page 1797	Historic Reserve	4.0611 ha

### Beach Road Park



Beach Road Park (Lot 3 DP 73274 - 0.1741 ha) be declared a historic reserve under the Reserves Act 1977. This resolution was notified in the New Zealand Gazette (Notice no. 4671, NZG no.76, 28 May 2009, page 1797).

Legal description	Gazette Notice / Certificate of title	Classification	Area
Lot 3 DP 73274	NZ Gazette 28 May 2009 No. 78 page 1797	Historic Reserve	0.1741 ha

Note: the area referred to as Britomart Historic Reserve (Reserve 4266 (SO 6049) NZ Gazette notice 1980 21 NZGZ) has not been included in the area to be referred to as Takapūneke Reserve.

The unsealed road along the water's edge of Takapūneke is to remain as legal road. This road will form one of the main access ways to Takapūneke Reserve. A bus turnaround and car park are proposed along the currently unsealed road between the Immigration Barracks and sewage treatment plant.

### 8.3 PHYSICAL DESCRIPTION

#### 8.3.1 Setting

Takapūneke Reserve is situated approximately 1.8 kms south-west of Akaroa township on Beach Road adjoining Akaroa Harbour. Ōnuku Road forms the western boundary to the reserve and to the south is rural private property.

Beach Road is a legal road that commences at Akaroa township and continues towards the mouth of Akaroa Harbour ending in front of the Akaroa Sewage Treatment Plant. The asphalt surface of the road stops at the entrance to the Red House and a single lane gravel road continues along the edge of the bay past Beach Road Park, Takapūneke Reserve and the Akaroa Sewage Treatment Plant. A stoney foreshore forms the Akaroa Harbour side of the gravel road, opposite to the reserves.

#### 8.3.2 Site description

Takapūneke Reserve is located on one of the lower eastern volcanic slopes facing inwards to Akaroa harbour. The site is undulating with five gullies from Ōnuku Road running down through the reserve to join together forming a narrow wetland at the lowest point of the reserve, by the Immigration Barracks and Beach Road.

Some regenerating bush has started to become established in three of the gullies closest to Ōnuku Road. The gullies have been planted with poplars, pine and eucalyptus trees to stabilise the sides of the gullies. The remainder of the reserve is in grass and tussock, which is grazed by sheep.

#### 8.3.3 Climate

The Akaroa climate is warm with an average temperature of 11.8 °C and an average precipitation of 985 mm. The driest month is usually February with 51 mm of rainfall and the





most precipitation is in July averaging 143 mm. The warmest month is January with an average temperature of 16.8 °C and July is the coldest month with an average temperature of 6.3 °C.

#### 8.3.4 Buildings and facilities

The Immigration Barracks was shifted to Takapūneke in 1898 from the corner of Bruce Terrace and Rue Jolie in Akaroa. Although the building had the word “Immigration” painted on it, it was never used for immigration purposes.

The Immigration Barracks has been used for various purposes over the years and today is used by one of the local community groups. Refer to the *Takapūneke Conservation Report* Christchurch City Council 2012, for more information on the history of the building.

#### 8.3.5 History

A Conservation Report was written for Takapūneke and adopted by the Christchurch City Council in 2012. The *Takapūneke Conservation Report* provides a comprehensive history of the Maori and Pākehā association with the site. The Report includes extensive research into Takapūneke obtained from a wide range of sources in an endeavour to provide an accurate history of the area. The Takapūneke Conservation Report is available on the Christchurch City Council website.

## 9 POLICY FRAMEWORK

### 9.1 POLICIES AND STRATEGIES

The Long Term Plan (LTP) is the Council’s planning document that sets out the activities and services, including management of parks and reserves the Council intends to provide for a period covering a minimum of 10 years.

Public Open Space Strategy 2010

Biodiversity Strategy 2008

Christchurch City Council’s Pest Plan

Canterbury Regional Pest Management Strategy 2011-2015

Christchurch District Plan (including Banks Peninsula District Plan) policy objectives

Land & Water Regional Plan 2016

Iwi Management Plan 2013

The District Plan provides a framework for the management of land use within the City, including the establishment of land use zones.



## 10 APPENDICES

### Glossary

AHI KA	Occupation of ancestral land
HAPŪ	Sub-tribe
KAINGA	House, residence, village, settlement
KAITIAKITANGA	The exercise of guardianship, stewardship and sustainable management.
KARAKIA	Prayer, blessing.
KAWA	Rules of protocol and procedure
KI UTA, KI TAI	From source to sea
MAHINGA KAI	Cultivation
MANA	Integrity, status, prestige, dignity, influence, respect
MANA WHENUA	Customary authority; those who have customary authority
MANA MOTUHAKA	Autonomy
MANU	Birds
MĀTAURANGA	Knowledge
MAURI	Life force or essence inherent in all things, both animate and inanimate as well as metaphysical or metaphorical
MOKOPUNA	Grandchild
NGĀ NGUTU	Gateway, entrance
PAPATŪĀNUKU	Mother earth
POU	Upright post, pole in ground
RANGATIRA	Chief
RONGOĀ	Medicinal qualities
RŪNANGA	Gathering, assembly
TAONGA	Prized possessions, treasures
TE REO MĀORI	Maori language
TIKANGA	Customary values and practices
TINO RANGATIRATANGA	Sovereignty, used in article 2 of the Treaty of Waitangi that refers to full chieftainship, authority and self-determination over the lands and customary resources and valuable treasures of the individual Ngāi Tahu and their whanau and hapū wherever they may exist.
TUPUNA	Ancestor, grandparent
TAKIWĀ	Area, Space, Time Place
TU AHU TAHI	Ones scared place
WĀHI TAPU	Sacred places and things
WĀHI TAONGA	Places and things treasured and valued
WAIKUA	The spiritual essence, and soul of all things that exist
WĀNANGA	Learning
WHAKAPAPA	The genealogy of a person and all things that exist gives effect to mana, mauri, wairua and tino rangatiratanga



---

## 9. Elected Members' Information Exchange / Te Whakawhiti Whakaaro o Te Kāhui Amorangi

---

This item provides an opportunity for Board Members to update each other on recent events and/or issues of relevance and interest to the Board.