

Finance and Performance Committee MINUTES ATTACHMENTS

Date: Thursday 29 April 2021
Time: 9.30am
Venue: Council Chambers, Civic Offices,
53 Hereford Street, Christchurch

TABLE OF CONTENTS	PAGE
8 Capital Project Performance Report - April 2021	
A. Table: Forecast against Budget.....	3
11 Asset Performance and Condition 2020 Report	
A. Asset Management Presentation	4

Forecast against Budget: Core & External Funded - April 2021

All of Council			
	Core	External Funded	TOTAL
Budget:	\$376.8m	\$65.6m	\$442.4m
Forecast:	\$358.4m	\$41.5m	\$399.9m
Spend to date:	\$248.9m	\$24.1m	\$273m
All of Council Forecast against Core		95%	

Above the line:

Parakiore and CMUA	
Budget:	\$110m
Forecast:	\$57.4m
Spend to date:	\$32.8m
Parakiore & CMUA Forecast	
	52%

Transport			
	Core	External Funded	TOTAL
Budget:	\$103.7m	\$43.2m	\$146.9m
Forecast:	\$106.9m	\$32.1m	\$139m
Spend to date:	\$74.1m	\$20m	\$94.1m
Transport Forecast against Core		93%	

3 Waters			
	Core	External Funded	TOTAL
Budget:	\$157.6m	\$14m	\$171.5m
Forecast:	\$144.7m	\$8.1m	\$152.8m
Spend to date:	\$98.3m	\$2.8m	\$101.1m
3 Water Forecast against Core		92%	

Community			
	Core	External Funded	TOTAL
Budget:	\$28.9m	\$7m	\$35.7m
Forecast:	\$23.2m	\$1.3m	\$24.5m
Spend to date:	\$18.5m	\$0.7m	\$19.2m
Community Forecast against Core		80%	

- Asset condition and performance report
- Programme 6 Monthly report.

Asset condition and performance report

2

Report Highlights

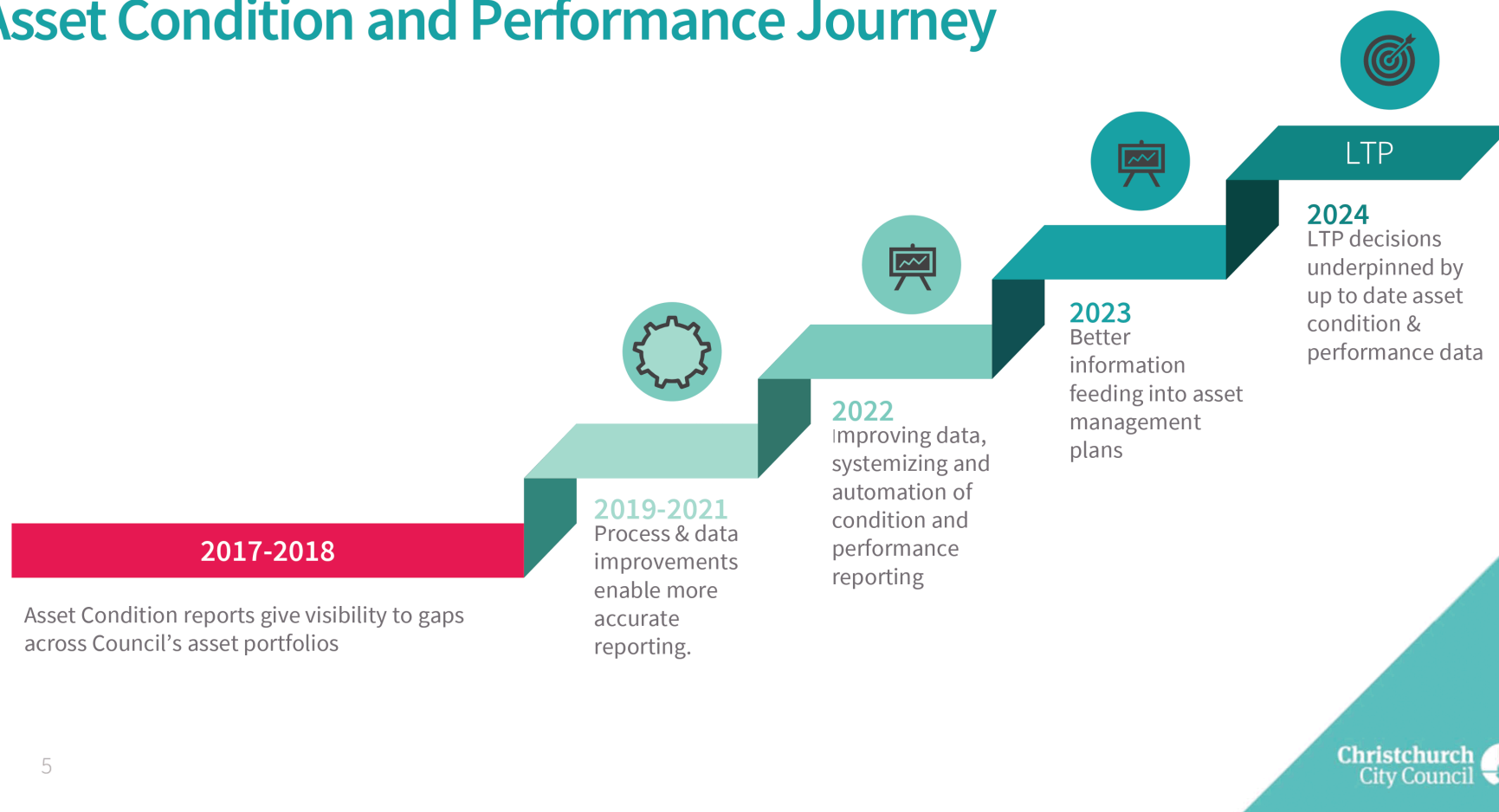
- **4 reports previously**- Awareness to a baseline of value and condition data held. Now moving to Performance of assets – Asset maturity improvement!
- **63% of the metrics measured have shown improvement.**- Better confidence in Asset information
- **Transport and Parks-clear progression** of previous results 2018 vs 2020. eg. Transport bridge and culvert data, facilities equipment. etc...
- **Challenges within Pump Station and Treatment plant Asset data** is of particular focus for the teams.



Report Highlights

- **Specific projects have driven visibility of opportunities** for improvements to the data sets and helped influence areas around contract renewals.
- **Council are closing the gaps in asset information** and understanding where the gaps are.
- **This report highlights that council are beginning the journey in understanding the performance** that our assets are delivering for our communities.

Asset Condition and Performance Journey

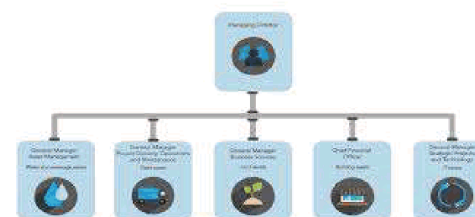


6 Monthly programme report

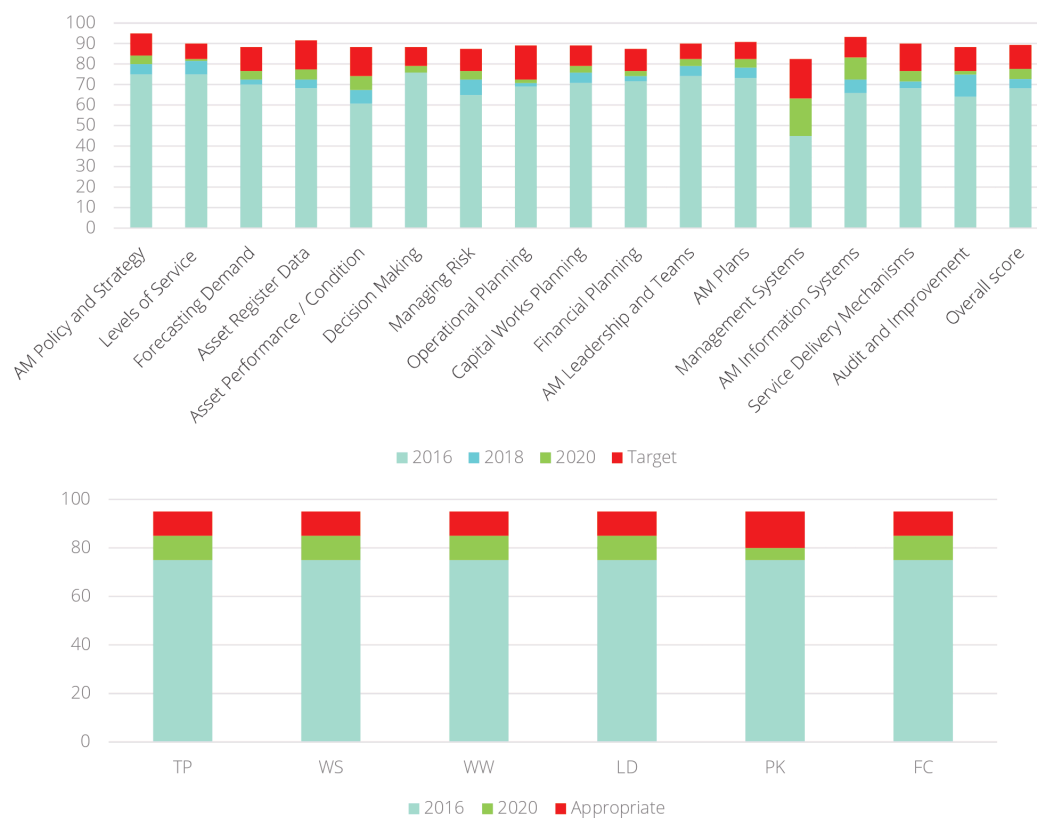
6

Projects

- 3.5.1- Asset management planning project – AMP's
 - Quality and completeness greatly increased
 - Management summary to tie AMP's for public
 - Organisation wide approach- Across the realm
- 3.5.2- Strategic Asset management plan
 - Bringing update to the strategic framework for assets
 - Reducing duplication in AMP's
 - Assets Strategic context for our LTP planning



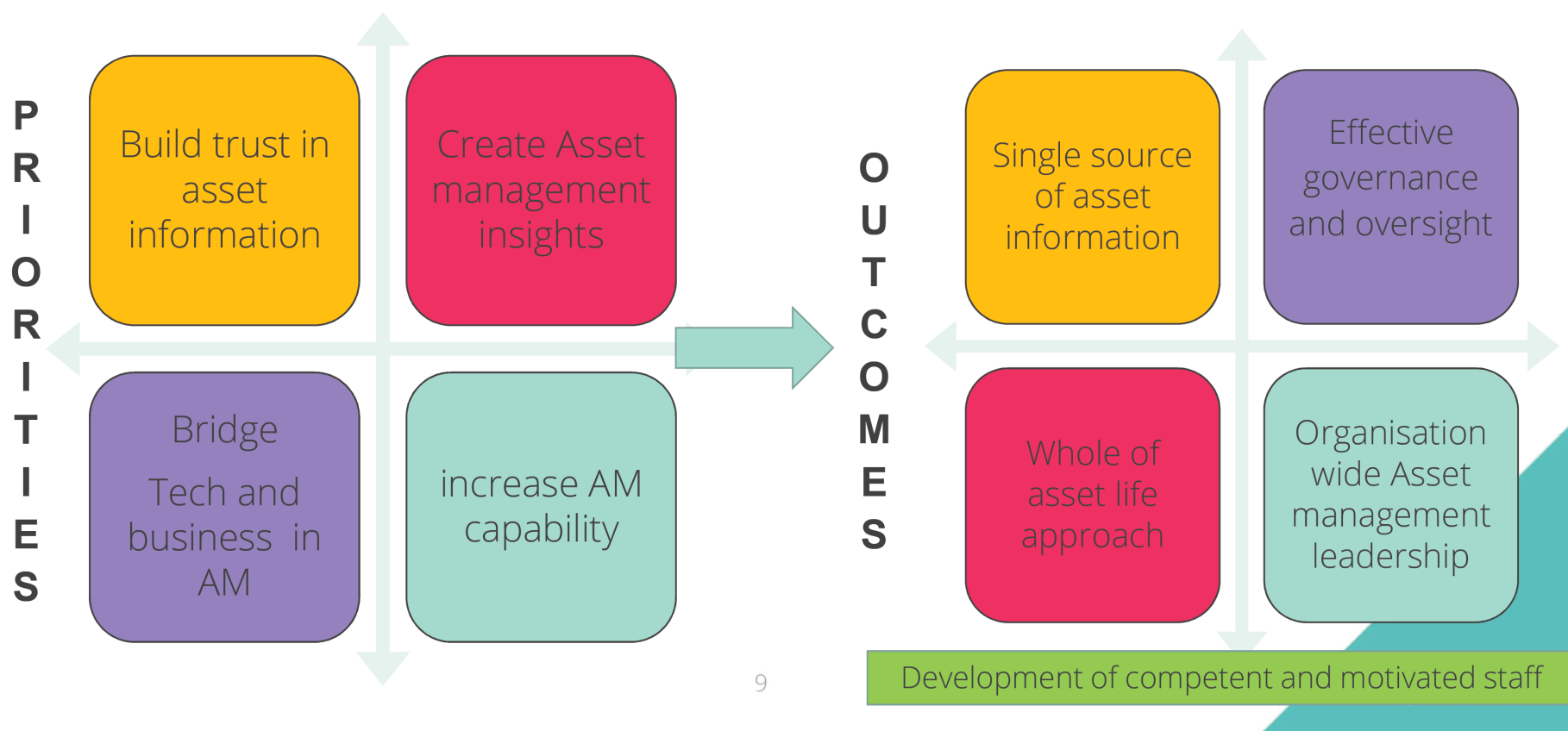
3.5.3 Asset maturity assessment project



Note recommendations
Assets team working
through each of these in
context for FY 22 planning.

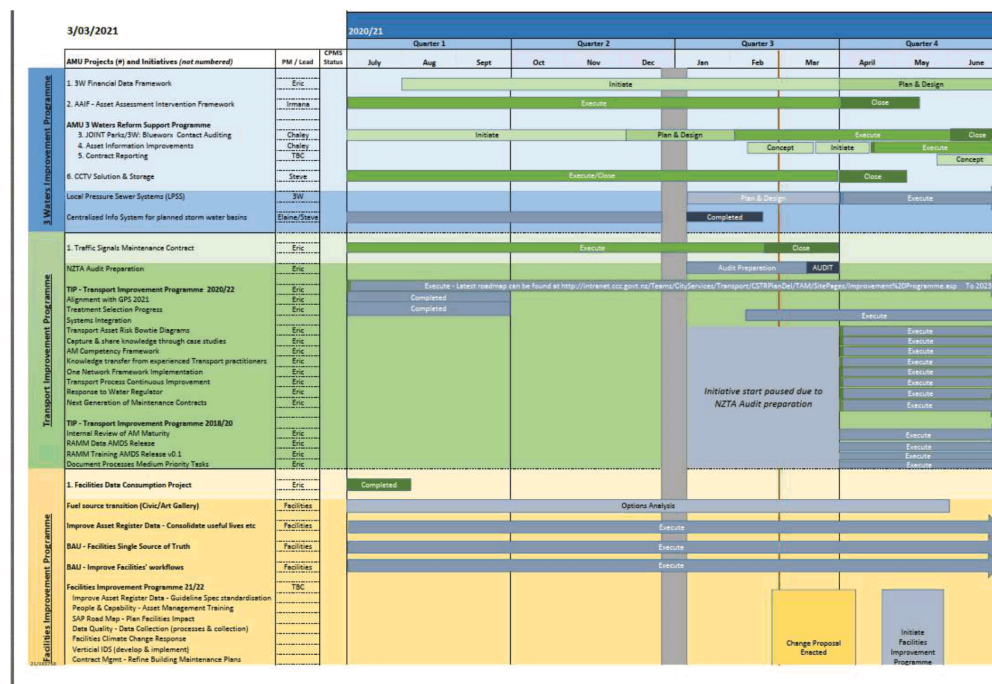
Improvement across all
areas of measurement and
all areas of council asset
managers

3.5.3 Future State of Asset management



9

The programme



Progressing projects for the asset managers to build further trust in information

Increasing asset capability in Governance technical advices, and improvement project delivery

Creating better insight to Data quality through reporting and assurance work

Bridging Technologies and business to drive process and auditing capability for the teams

IT asset management now on the programme