

Waihoru
Spreydon-Cashmere Community Board
MINUTES ATTACHMENTS

Date: Tuesday 30 March 2021
Time: 5pm
Venue: Boardroom, Beckenham Service Centre,
66 Colombo Street, Beckenham

TABLE OF CONTENTS	PAGE
4.1 Public Forum - Somerfield Park Basketball Court	
A. PowerPoint Presentation.....	3
4.4 Public Forum - Christchurch South Community Gardens	
A. PowerPoint Presentation.....	9
9 Briefings - Council's Draft Climate Change Strategy	
A. Climate Change Strategy.....	16

CASHMERE BASKETBALL



Our Mission:

Our mission is to grow the game of basketball in the somerfield Community and provide a safe and freely accessible environment where the youth of our suburb can develop their passions.



The Rise of Basketball

Here at Cashmere:

Cashmere High School has established itself as one of the premier basketball schools in the South Island. In 2018 we won the South Island Championship, in 2019 we took achieved a school best 4th place finish in the country and In this year will field the most teams that our ever has. We will have 12 competitive teams playing in the Canterbury Basketball Club Competition, compared to 8 last year.

Nationwide:

Participation in New Zealand Schools	
Netball	25,000 Participants
Basketball	24,000 Participants
Rugby	24,000 Participants

What is the need and why?:

As the number #2 played sport in New Zealand Secondary Schools there is a real interest surrounding basketball. Unfortunately though, In the somerfield area there are no freely accessible courts, that are not located on a school premises. By providing the community of Somerfield with a freely accessible basketball court, we are capitalizing on the current interest in the game. We are also removing the financial barrier of playing basketball at a Council venue, which could prevent youth from developing their passions.

Community Support:



CASHMERE

BASKETBALL

CASHMERE

BASKETBALL

THANK YOU FOR LISTENING!

CASHMERE

BASKETBALL

CASHMERE

BASKETBALL



Purpose of Presentation

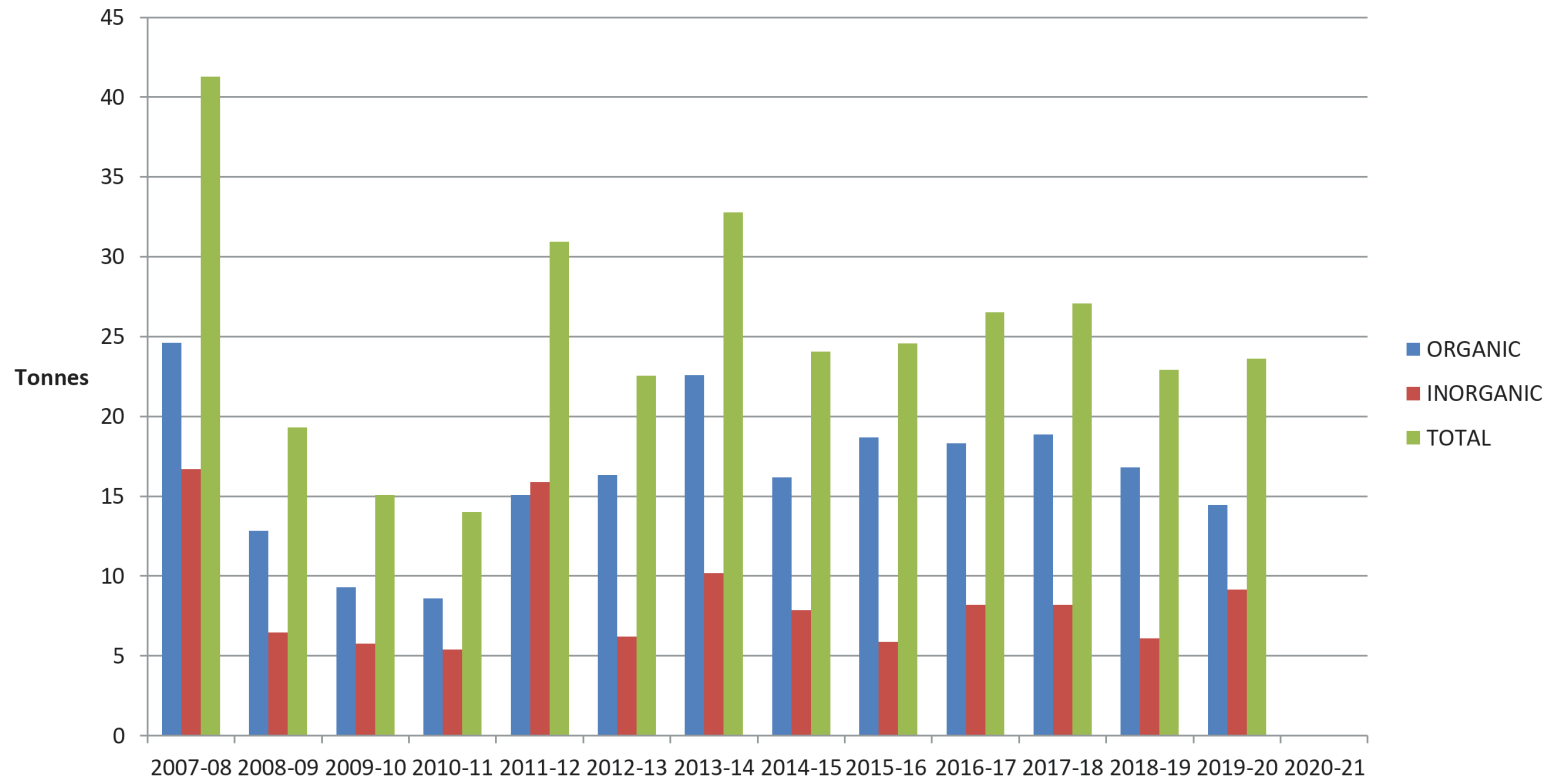
- To provide background for an application to the CCC Discretionary Response Fund for funds to support the Ch Ch South Community Waste Minimisation Project
- To gain support from the SC Community Board for grant applications and presentations to the CCC and elsewhere. The Project has not received funds specifically for the purpose of waste minimisation from the CCC since 2002/3 - Home Composting Workshops.
- To focus attention on the waste minimisation activities of the CSCGT and how we managed during last year's Covid lockdowns.
- To focus attention on the ongoing impact of last year's Covid lockdowns on our fundraising opportunities (\$2000 loss) and recent reductions in Lotteries Funds (less \$5000). Net Loss predicted.

Community Benefits

- Cost effective ~ Reduced waste to landfill helps minimise rates increases
- Health and Fitness – a walkable community waste reduction solution for 20+ years
- Long term data showing neighbourhood – scale trends – research potential
- Meets strategic priorities of the CCC LTP (‘... sustainable use of resources and minimising waste ...’), CCC Draft Waste Mgt and Minimisation Plan (investment in local solutions) and those of the Spreydon – Cashmere Community Board (active / connected communities, meeting the challenge of climate change, sustainable practices ...)
- Demonstrates resident and business support for local waste processing systems
- Inclusion in local emergency community hubs (waste processing) - can service multiple neighbourhoods.

Waste Audit – Av Tonnes – Data Collection period 2004 -2020
2019-2020 Organic –14.45t Inorganic – 9.16 t Total 23.61 tonnes

**Christchurch South Community Gardens
Community Waste Processed**



Waste Audit: Christchurch South Community Gardens : 2010 - 2020

	Total Tonnes	Average Tonnes p.a.
Green Waste	63	6.3
Food Waste	19	1.9
Soil	42	4.2
Bark	8	0.8
Manure	9	0.9
Straw/Leaves/all other	5	0.5

Total Organic 146 tonnes 14.6 tonnes

Total Inorganic * 90 tonnes 9 tonnes

(includes, tyres, plastic, timber, paint, bricks, glass etc... 20 Categories)

- Total Community Waste .. 236 tonnes 23.6 tonnes p.a.

Christchurch South Waste Minimisation Project Budget 2021-22 - CCC DRF Application

- 24 tonnes x \$300 / tonne* =\$7200
(= approx 5 hrs/week paid staff,) .
40% less than current labour input (7hrs p/w)
(all manual input, almost zero emissions)
- Materials 2021-22 - R&M = \$2800

(ply, signage, paint, bio-bags, PR, cleaning resources ..)
- Overheads –\$1000
- Total \$ 11,000
- * Comparable to CCC cost/tonne for all waste disposal

Waste as a Resource

Responsible Producer ~ Knowledgeable Consumer



Climate Strategy overview

1

Have your say

Draft Ōtautahi Christchurch Climate Change Strategy

Consultation open Friday 12 March
until Sunday 25 April, 2021

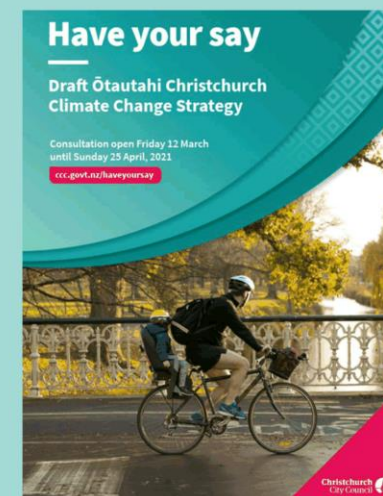
ccc.govt.nz/haveyoursay



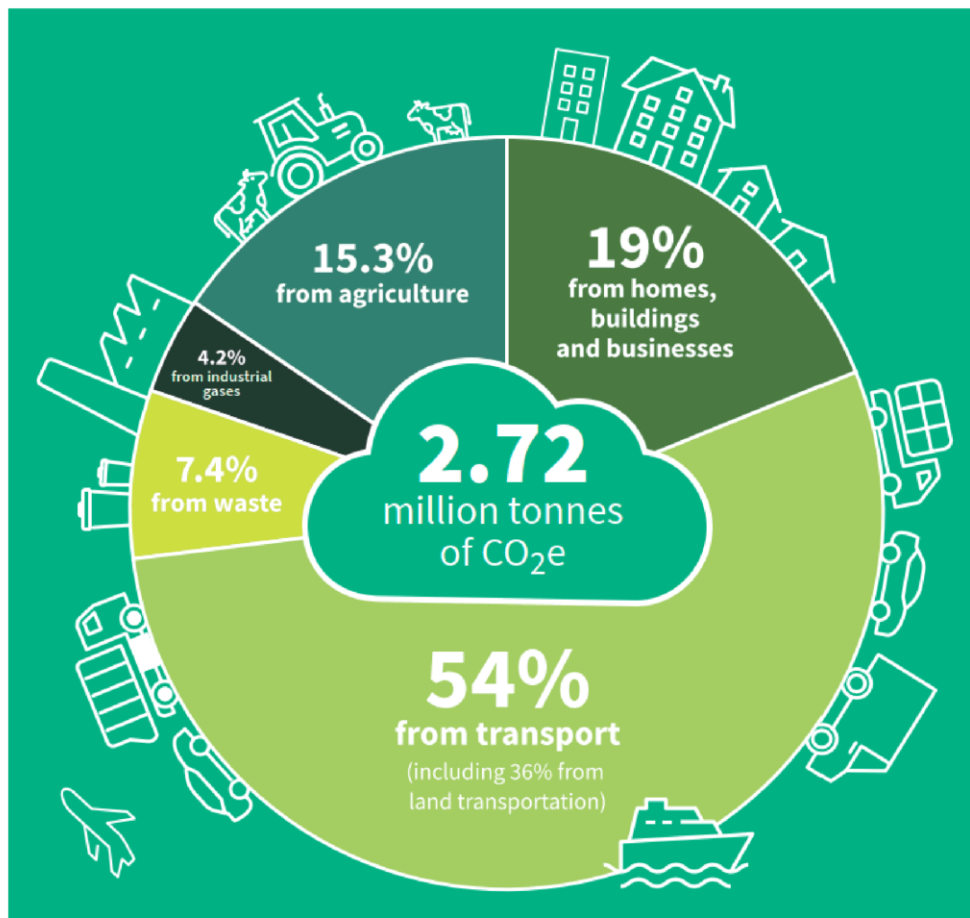
Christchurch
City Council 

Introducing the strategy

- Provides a high-level framework to guide ongoing action
- Covers the whole district, not just Council activities
- Includes both mitigation and adaptation efforts
- Is structured around goals, principles and climate action programmes
- Action plans will need to be co-developed with the community
- Replaces the 2010 Climate Smart Strategy



Emissions and targets for Christchurch District



Christchurch District targets:

Net zero GHG emissions by 2045
and 50% less by 2030

At least a 50% less methane by
2045 and 25% by 2030

From a 2016/2017 base line

Council target for our operations:

Carbon neutral by 2030

Projected changes

Temperature rise

Average 1°C hotter in 2040.
Average 3°C hotter in 2090
10 more 25°C+ days by 2040
10 fewer frosts by 2040
More frequent fire risk
Longer fire season

Sea level rise

0.5m by 2060
1.0m by 2120
Coastal groundwater rise
Coastal flooding and erosion
Saltwater intrusion



Extreme weather

More intense, frequent drought
More frequent, extreme rainfall events
More landslides / drought on Banks Peninsula
Daily wind increases 10% by 2100

Our climate goals



Net Zero Emissions Christchurch



We understand and are prepared for the ongoing impacts of climate change



We have a just transition to an innovative low-emission economy



We are guardians of our natural environment and taonga

10 Climate Action Programmes



1 Building the foundation – partnerships and resourcing



2 Understanding the local effects of climate change



5 Carbon removal and natural restoration



8 Low-emission transport system



3 Proactive planning with communities



6 Economic transformation and innovation



9 Towards zero waste



4 Adapting and greening infrastructure



7 Energy efficient homes and buildings



10 Sustainable food system

Programme 5 Carbon removal and natural restoration

- Programmes all designed to build off existing work – whether led by Council or others
- Plans to be developed with the community and partners for each programme
- A range of Council policies and plans can help support the climate Strategy

- e.g. the upcoming Urban Forest Plan will also support efforts to increase natural carbon sequestration across the district



Have your say before Sunday 25 April

ccc.govt.nz/haveyoursay

