

**Te Pātaka o Rākaihautū
Banks Peninsula Community Board
AGENDA**

Notice of Meeting:

An ordinary meeting of the Te Pātaka o Rākaihautū/Banks Peninsula Community Board will be held on:

Date: Monday 1 March 2021
Time: 10am
Venue: Lyttelton Community Boardroom,
25 Canterbury Street, Lyttelton

Membership

Chairperson	Tori Peden
Deputy Chairperson	Tyrone Fields
Members	Reuben Davidson
	Nigel Harrison
	Howard Needham
	Jamie Stewart
	Andrew Turner
	Scott Winter

23 February 2021

Penelope Goldstone
Manager Community Governance, Banks Peninsula
941 5689
penelope.goldstone@ccc.govt.nz
www.ccc.govt.nz

Note: The reports contained within this agenda are for consideration and should not be construed as Council policy unless and until adopted. If you require further information relating to any reports, please contact the person named on the report.

To view copies of Agendas and Minutes, visit:

<https://www.ccc.govt.nz/the-council/meetings-agendas-and-minutes/>



Developing Resilience in the 21st Century

Strategic Framework

Whiria ngā whenu o ngā papa,
honoa ki te maurua tāuiki

Bind together the strands of each mat and join
together with the seams of respect and reciprocity

Ōtautahi-Christchurch is a city of opportunity for all

Open to new ideas, new people and new ways of doing things – a city where anything is possible

Principles

Being open,
transparent and
democratically
accountable

Promoting
equity, valuing
diversity and
fostering inclusion

Taking an inter-generational approach
to sustainable development,
prioritising the social, economic
and cultural wellbeing of
people and communities
and the quality of the
environment, now
and into the
future

Building on the
relationship with
Te Rūnanga o Ngāi Tahu
and the Te Hononga-Council
Papatipu Rūnanga partnership,
reflecting mutual understanding
and respect

Actively collaborating and
co-operating with other
local, regional
and national
organisations

Ensuring
the diversity
and interests of
our communities
across the city and the
district are reflected in
decision-making

Community Outcomes

Resilient communities

Strong sense of community
Active participation in civic life
Safe and healthy communities
Celebration of our identity
through arts, culture, heritage,
sport and recreation
Valuing the voices of all cultures
and ages (including children)

Liveable city

Vibrant and thriving city centre
Sustainable suburban and
rural centres
A well connected and accessible
city promoting active and
public transport
Sufficient supply of, and
access to, a range of housing
21st century garden city
we are proud to live in

Healthy environment

Healthy water bodies
High quality drinking water
Unique landscapes and
indigenous biodiversity are
valued and stewardship
exercised
Sustainable use of resources
and minimising waste

Prosperous economy

Great place for people, business
and investment
An inclusive, equitable economy
with broad-based prosperity
for all
A productive, adaptive and
resilient economic base
Modern and robust city
infrastructure and community
facilities

Strategic Priorities

Enabling active
and connected
communities
to own their future

Meeting the challenge
of climate change
through every means
available

Ensuring a high quality
drinking water supply
that is safe and
sustainable

Accelerating the
momentum
the city needs

Ensuring rates are
affordable and
sustainable

Ensuring we get core business done while delivering on our Strategic Priorities and achieving our Community Outcomes

Engagement with
the community and
partners

Strategies, Plans and
Partnerships

Long Term Plan
and Annual Plan

Our service delivery
approach

Monitoring and
reporting on our
progress

Part A	Matters Requiring a Council Decision
Part B	Reports for Information
Part C	Decisions Under Delegation

TABLE OF CONTENTS

Karakia Timatanga	4
C 1. Apologies / Ngā Whakapāha.....	4
B 2. Declarations of Interest / Ngā Whakapuaki Aronga	4
C 3. Confirmation of Previous Minutes / Te Whakaāe o te hui o mua	4
B 4. Public Forum / Te Huinga Whānui.....	4
B 5. Deputations by Appointment / Ngā Huinga Whakaritenga	4
B 6. Presentation of Petitions / Ngā Pākikitanga.....	4
B 7. Reserve Management Committee Meeting Minutes	11
B 8. Briefing - Banks Peninsula Geopark Project	15
STAFF REPORTS	
A 9. Diamond Harbour Wharf Upgrade	33
B 10. Te Pātaka o Rākaihautū/Banks Peninsula Community Board Area Report - March 2020	41
B 11. Elected Members' Information Exchange / Te Whakawhiti Whakaaro o Te Kāhui Amurangi.....	55
Karakia Whakamutunga	

Karakia Timatanga

1. Apologies / Ngā Whakapāha

At the close of the agenda no apologies had been received.

2. Declarations of Interest / Ngā Whakapuaki Aronga

Members are reminded of the need to be vigilant and to stand aside from decision making when a conflict arises between their role as an elected representative and any private or other external interest they might have.

3. Confirmation of Previous Minutes / Te Whakaāe o te hui o mua

That the minutes of the Te Pātaka o Rākaihautū/Banks Peninsula Community Board meeting held on [Monday, 15 February 2021](#) be confirmed (refer page 5).

4. Public Forum / Te Huinga Whānui

A period of up to 30 minutes will be available for people to speak for up to five minutes on any issue that is not the subject of a separate hearings process.

4.1 Hilda Frame Reserve - Te Kura o Ōhinetahi - Governors Bay School Pupils from the Te Kura o Ōhinetahi - Governors Bay School wish to speak to the Board to ask if they can erect a sign in memory of Hilda Frame who gifted a reserve, opposite the school, to the Council.

4.2 Fire Risk – Urumau Reserve

Nick Jackman, representative of some Foster Terrace residents, wishes to address the Board with the residents' concerns about the management of the fire risk and the fire break behind the houses that back onto Urumau Reserve.

4.3 Lyttelton Mountain Bike Club – Track Upgrades in Urumau Reserve

Joshua Merriam, on behalf of the Lyttelton Mountain Bike Club, wishes to speak to the Board to ask it to approve the track upgrades for the entrance to the Urumau Reserve as shown in the Urumau Reserve Development Plan.

5. Deputations by Appointment / Ngā Huinga Whakaritenga

Deputations may be heard on a matter or matters covered by a report on this agenda and approved by the Chairperson.

There were no deputations by appointment at the time the agenda was prepared.

6. Presentation of Petitions / Ngā Pākikitanga

There were no petitions received at the time the agenda was prepared.

**Te Pātaka o Rākaihautū
Banks Peninsula Community Board
OPEN MINUTES**

Date: Monday 15 February 2021
Time: 10am
Venue: Little River Community Centre
44 Western Valley Road, Little River 7591

Present

Chairperson	Tori Peden
Deputy Chairperson	Tyrone Fields
Members	Reuben Davidson Nigel Harrison Jamie Stewart Andrew Turner

15 February 2021

Penelope Goldstone
Manager Community Governance, Banks Peninsula
941 5689
penelope.goldstone@ccc.govt.nz
www.ccc.govt.nz

To view copies of Agendas and Minutes, visit:
www.ccc.govt.nz/the-council/meetings-agendas-and-minutes/

Part A Matters Requiring a Council Decision

Part B Reports for Information

Part C Decisions Under Delegation

Karakia Timatanga: Tyrone Fields

The agenda was dealt with in the following order.

1. Apologies / Ngā Whakapāha

Part C

Community Board Resolved BKCB/2021/00011

That the apologies for absence received from Scott Winter and Howard Needham be accepted.

Tyrone Fields/Reuben Davidson

Carried

2. Declarations of Interest / Ngā Whakapuaki Aronga

Part B

There were no declarations of interest recorded.

3. Confirmation of Previous Minutes / Te Whakaāe o te hui o mua

Part C

Community Board Resolved BKCB/2021/00012

That the minutes of the Te Pātaka o Rākaihautū/Banks Peninsula Community Board meeting held on Monday, 1 February 2021 be confirmed.

Tyrone Fields/Jamie Stewart

Carried

4. Public Forum / Te Huīnga Whānui

Part B

4.1 Public Forum – Little River Railway Station Trust

Members of the Little River Railway Station Trust, Warren Brixton and Marie and Rob McFarlane, spoke to the Board regarding the current activities of the Trust.

Part B

That the Te Pātaka o Rākaihautū/Banks Peninsula Community Board:

1. Thanks Warren Brixton and Marie and Rob McFarlane for their presentation.

Attachments

- A Banks Peninsula Community Board 15 February 2021 - Little River Railway Station Trust Booklet
- B Banks Peninsula Community Board 15 February 2021 - Little River Railway Station Trust Handout

4.2 Public Forum – Akaroa School and Community Library

Victoria Andrews, resident, spoke to the Board regarding the use of the Akaroa Area School and Community Library.

Ms Andrews asked that the Board commission an independent report to ascertain why consultation undertaken in 2015 regarding the future of the Akaroa Service Centre was not taken into account during the recent decision to relocate Customer Services to the Library.

Part B

That the Te Pātaka o Rākaihautū/Banks Peninsula Community Board:

1. Thanks Victoria Andrews for her presentation.

Refer Item 7

Attachments

- A Banks Peninsula Community Board 15 February 2021 - Akaroa Area School and Community Library Victoria Andrews Handout

7. Correspondence - Akaroa School and Community Library

Officer Recommendations / Ngā Tūtohu

That the Banks Peninsula Community Board:

1. Receive the information in the correspondence report dated 15 February 2021.

Community Board Resolved BKCB/2021/00013

Part B

That the Banks Peninsula Community Board:

1. Receive the information in the correspondence report dated 15 February 2021.
2. Request that the correspondence be referred to staff who are already preparing information for the Board on the Akaroa Customer Services issue.

Andrew Turner/Jamie Stewart

Carried

5. Deputations by Appointment / Ngā Huinga Whakaritenga

Part B

There were no deputations by appointment.

6. Presentation of Petitions / Ngā Pākikitanga

Part B

There was no presentation of petitions.

8. Ground Lease for Community Car Port

Community Board Resolved BKCB/2021/00014

(Original officer recommendation accepted without change)

Part C

That the Te Pātaka o Rākaihautū/Banks Peninsula Community Board:

1. Subject to the Governors Bay Community Transport Trust obtaining all necessary regulatory consents and approvals to construct the carport:
 - a. Approve the grant of a ground lease in accordance with the plan attached (the exact size and location of the lease area to be determined following construction of the carport) for a term of 5 years to the Governors Bay Community Transport Trust at a peppercorn rental.
 - b. Approve the construction of a carport in the approximate location identified on the attached plan on Council owned Local Purpose (Community Buildings) Reserve at 1 Cresswell Avenue.
 - c. Delegate to the Manager Property Consultancy authority to undertake and manage all matters necessary to negotiate the terms of the lease referred to in a. above.
 - d. Notes that the Governors Bay Community Transport Trust are required to have a Council approved arborist on-site during foundation construction to ensure no undue damage occurs to the tree roots.

Andrew Turner/Tyrone Fields

Carried

9. Heritage Park Little River Playground Renewal
Community Board Resolved BKCB/2021/00015

(Original officer recommendation accepted without change)

Part C

That the Te Pātaka o Rākaihautū/Banks Peninsula Community Board:

1. Approve the landscape plan for the renewal of the playground at Heritage Park Little River as per **Attachment A** (attached to the agenda) – LP385701
2. Approve the wider context landscape plan for the future unfunded works as proposed by the Little River Wairewa Community Trust as per **Attachment B** (attached to the agenda) – LP385701

Tori Peden/Tyrone Fields

Carried

10. Banks Peninsula Discretionary Response Fund - Little River Wairewa
Community Trust
Community Board Resolved BKCB/2021/00016

(Original officer recommendation accepted without change)

Part C

That the Te Pātaka o Rākaihautū/Banks Peninsula Community Board:

1. Approves a grant of up to \$2,000 from its 2020-21 Discretionary Response Fund to Little River Wairewa Community Trust towards purchase of the Little River Pop-up Penguin.

Tori Peden/Nigel Harrison

Carried

11. Elected Members' Information Exchange / Te Whakawhiti Whakaaro o Te Kāhui Amorangi

Part B

Members exchanged items of information and interest:

- Akaroa Water – community concerns and questions
- Le Grande Swim Event – benefit to Akaroa
- Waitangi Day Celebrations – Rāpaki and Okains Bay
- Akaroa Cemeteries Group – work continuing to restore two graves and remove two trees
- Naval Point Club – Sail GP event
- Okains Bay Reserve Management Committee – elected members reported on attendance
- Fire Hydrant Newton Place, Akaroa – still leaking
- Akaroa Service Centre – community suggestions for building
- Akaroa Hui – to be held on Thursday 25 February
- Lyttelton Reserve Management Committee - elected members reported on attendance
- Fire Risk – Lyttelton residents still concerned at fire risk from Urumau Reserve
- Steadfast – questioned whether there are more appropriate names for this property

11.1 Parking Restrictions - Simeon Quay

The Board heard about a safety issue in Lyttelton with vehicles turning onto Voelas Road from Simeon Quay, when the drivers were actually unsighted for part of the manoeuvre because of parked vehicles.

Part B

That the Te Pātaka o Rākaihautū/Banks Peninsula Community Board:

1. Request that staff investigate the installation of yellow no stopping lines on Simeon Quay for when vehicles are completing a U-turn onto Voelas Road.

11.2 Naval Point Development Plan

Part B

That the Te Pātaka o Rākaihautū/Banks Peninsula Community Board:

1. Request that staff who are working on the Naval Point Development project be asked to consider the installation of outdoor exercise equipment on the Lyttelton Recreation Ground as part of the project.

11.3 Okains Bay Water Supply

Part B

That the Te Pātaka o Rākaihautū/Banks Peninsula Community Board:

1. Requests that the Board and the community receive an update on the Okains Bay Water Supply project.

Karakia Whakamutunga: Tyrone Fields

Meeting concluded at 11.22am.

CONFIRMED THIS 1st DAY OF MARCH 2021

TORI PEDEN
CHAIRPERSON

7. Reserve Management Committee Meeting Minutes

Reference / Te Tohutoro: 21/157422

Report of / Te Pou
Matua:

Liz Carter, Community Board Advisor, Liz.Carter@ccc.govt.nz

General Manager /
Pouwhakarae:

Mary Richardson, GM Citizens & Community,
Mary.Richardson@ccc.govt.nz

1. Purpose of Report / Te Pūtake Pūrongo

Minutes have been received from the following Reserve Management Committees:

Name	Subject
Diamond Harbour Reserve Management Committee	25 January 2021 Unconfirmed

2. Officer Recommendations / Ngā Tūtohu

That the Banks Peninsula Community Board:

1. Receive the minutes of the following Reserve Management Committee:
 - Diamond Harbour Reserve Management Committee – 25 January 2021

Attachments

No.	Title	Page
A ↓	Diamond Harbour Reserve Management Committee Unconfirmed Minutes - 25 January 2021	12

Diamond Harbour Reserve Management Committee – Meeting of 25 Jan 2021

Attendance: Graeme Fraser (Chair), Felix Dawson (Secretary), Pete Ozich, Tom Kuenning, Richard Suggate, Fliss Forbes, Robert Goldie
Apologies: Paul Pritchard, Phil Swallow, Thomas Kulpe, Dave Hammond
Guest: Rodney Chambers CCC, Richard Suggate DHCA

	Agenda Item	Issue	Resolution	Action
1	Guest Speaker Rodney Chambers CCC Regional Parks	Recent work: Various sites, tracks mainly, weeded/ retaining wall repair plus various other work Nick Singleton- met with family re memorial seat, steps built Coastal pathway to be managed more carefully and prime focus for Regional Parks, does not include other access paths Access paths are Community Parks (or Urban Parks) responsibility- Kerri now on maternal leave, Paddy Macbeth is new representative for the area from CommunityParks Suggest invitation to Paddy to attend next meeting		Graeme to invite Paddy to next meeting
2	Godley House Update- Richard Suggate	Early 2020 DHCA requested staff: To ask DOC whether part of reserve could be revoked To liaise with DHCA over the request. Request made without liaison Late 2020-DHCA Representation to CB- resulted in request to staff to re-write request to DOC Requested copy of first letter- DHCA have reviewed and identified problems with the content of the request Draft of second letter received, DHRA currently reviewing Suggested that given RMC is responsible for Stoddard Point that input from RMC should be sought before second letter is sent to DOC Tom K suggested input from chair of other Residents Committees should be considered	That the chair and secretary be delegated authority to review the second draft letter on behalf of the RMC That Richard consider Tom's suggestion and discuss with CCC staff	Graeme to liaise with DHCA to ensure second draft of letter is reviewed by the chair and secretary

Minutes meeting 25-1-2021

1

3	- Priority areas for weed control/elimination/planting	<p>Priorities areas for the gullies:</p> <ol style="list-style-type: none"> 1. Plants ordered with Council 2. Additional block on west side-1ha-1,500 3. track sides in fill- second row required-150 4. Lower Morgan's gully- to plant where approx 200 more to be planted 5. More removal of banana passionfruit in lower Morgan's Gully 6. Lower part of Sam's (upper area)- 200 to plant <p>Priorities for cliff track</p> <ol style="list-style-type: none"> 1. Passionfruit cleared-Sam's gully near Te Ara 2. Passionfruit between Hays Bay and Charteris yacht club 3. Head to Head- track <ol style="list-style-type: none"> (a) From Orton Park to Andersons Road (b) 'Philippa' section-yacht club to Paradise Bay (c) Road down to sewer plant up to the cliff track east of the sewage plant (d) Tom to provide recent email to Nick Singleton setting out-priorities 		
4	-	<p>Suggested that volunteer co-ordinator position is required and could be created to assist with managing planting programme and on going maintenance. Pete well suited to position and available as a result of Covid</p> <p>Rodney advised that 'jobs for nature' a possible best option for funding for a paid position</p> <p>Closes 16 Feb</p>	Resolved to support application for volunteer co-ordinator position with Pete proposed for the role	Pete to prepare job description Graeme to enquire with Kay Holder/Paul Devlin as to process for application
5	- More volunteers required			Graeme to advertise
6	- Any other business	<p>TomK suggested review of other small reserves- Charteris Bay-Purau</p> <p>Suggest- request local champions for local reserves</p>		Graeme to include reference in advertisement. Graeme to liaise with Tom K over wording of ad.

8. Briefing - Banks Peninsula Geopark Project

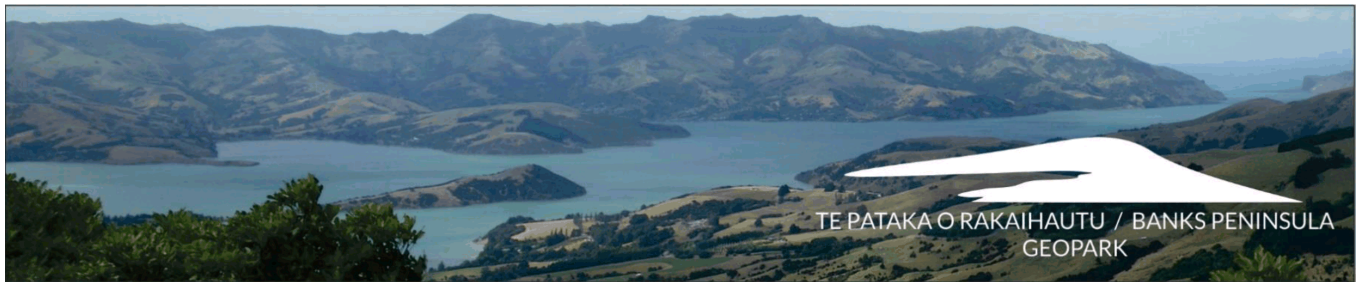
Reference / Te Tohutoro: 21/97432

Presenter(s) / Te kaupāhō: Dr Sam Hampton - Director
Te Pātaka o Rākaihautū / Banks Peninsula Geopark Project

Timing	This briefing is expected to last for 15 minutes
Purpose / Origin of Briefing	To update the Community Board on the: Te Pātaka o Rākaihautū / Banks Peninsula Geopark
Background	Te Pātaka o Rākaihautū / Banks Peninsula Geopark: <ul style="list-style-type: none">• is a knowledge and learning platform to engage local visitors in the landscape of Banks Peninsula• it aims to celebrate Banks Peninsula's unique landscape and rich layers of history
Key Issues	<ul style="list-style-type: none">• Received funding for on-ground development and creation of interpretation panels at key sites, with one of these sites Ōhinetahi / Governors Bay Foreshore Track
Next Steps	Provide an overview of the project, vision, strategic model for Banks Peninsula and the plans for development of the Geopark
Useful Links	https://www.bpgeopark.com/

Attachments / Ngā Tāpirihanga

No.	Title	Page
A ↓	Te Pātaka o Rākaihautū - Banks Peninsula Geopark - Attachment to report to Banks Peninsula Community Board 1 March 2021 meeting	16



TE PĀTAKA O RĀKAIHAUTU / BANKS PENINSULA
GEOPARK

TE PĀTAKA O RĀKAIHAUTŪ / BANKS PENINSULA GEOPARK

PURPOSE, PARTNERSHIP AND DEVELOPMENT OF
TE PĀTAKA O RĀKAIHAUTŪ / BANKS PENINSULA
GEOPARK



TE PĀTAKA O RĀKAIHAUTŪ
BANKS PENINSULA
GEOPARK

PREPARED BY SAM HAMPTON
TE PĀTAKA O RĀKAIHAUTŪ /
BANKS PENINSULA GEOPARK
TRUST

bngopark.com

Contents

Purpose, Partnership and Development of Te Pātaka o Rākaihautū / Banks Peninsula Geopark	1
What is the Geopark concept?	1
Why is a Geopark Needed?.....	2
On Ground Engagement Mechanisms within a Geopark	2
Visions of the Te Pātaka o Rākaihautū / Banks Peninsula Geopark.....	3
What are the benefits of a Geopark?	4
Why is Rūnanga a key element of Te Pātaka o Rākaihautū / Banks Peninsula Geopark?	4
How and What a Geopark can offer?	5
The Geopark Model for Te Pātaka o Rākaihautū / Banks Peninsula	7
Core Geopark Activities.....	7
Development in Collaboration with the Community.....	8
Selected Community Engagement Events and Relationships.....	8
What the Geopark Looks Like on the Ground: Geosites.....	11
Geopark Trust	12
Trustees.....	12
Contact.....	14

Purpose, Partnership and Development of Te Pātaka o Rākaihautū / Banks Peninsula Geopark

The following provides an overview of the intent and purpose in the creation of a Geopark on Te Pātaka o Rākaihautū / Banks Peninsula, and what are believed to be the benefits for Te Pātaka o Rākaihautū / Banks Peninsula in the creation of that Geopark.

What is the Geopark concept?

Geoparks serve as a means for visitors to explore the outdoors through a lens of geology and environment, heritage, sustainability, and local economy. Geoparks, as established by the United Nations Educational, Scientific and Cultural Organisation (UNESCO) in 1998, recognise geographical areas where sites and landscapes of international geological significance are celebrated and managed within a holistic concept of protection, education and sustainable development. There are currently 161 UNESCO Global Geoparks in 44 countries. In 2018, UNESCO New Zealand formally acknowledged Geoparks as a way of giving special recognition to parts of Aotearoa/New Zealand.

Te Pātaka o Rākaihautū / Banks Peninsula has a singularly distinctive landscape with significant geological features, but moreover it is what has created and then occurred on and within this landscape, which make this area ideal for a UNESCO Geopark. For Aotearoa, a Geopark is an ideal vehicle to use to tell the stories of the landscape, its flora and fauna, its people (both Māori and Pakeha), and showcase the relationships of land to people and people to land.

Why is a Geopark Needed?

People have a desire to understand our landscapes, both natural and cultural. Not many will visit to just learn about rocks, but many will want to know how the landscape has come to be, what has influenced it over time, what and who lives in this environment, their connections and interactions. For Te Pātaka o Rākaihautū / Banks Peninsula Geopark the landscape is central – and the Geopark looks to tell the stories of how that landscape has influenced our culture, ecosystems, and environments, with the overall purpose to engage people in the landscapes of Te Pātaka o Rākaihautū / Banks Peninsula.

The Geopark is a way of engaging all locals in their backyard, enabling them to recognise and cherish the uniqueness of Banks Peninsula. Geoparks also attract visitors who invest time in a place. Geopark visitors wish to deeply engage and explore, creating their own connections and sense of place, resulting in longer staying visitors who engage, connect, and spend.

On Ground Engagement Mechanisms within a Geopark

On-ground, the Te Pātaka o Rākaihautū / Banks Peninsula Geopark will consist of a framework of:

Geopoints – a specific site e.g. volcanic dome, pa site, Totara tree, church.

Geosites – a collection of geographically related Geopoints.

Geotrails – a trail connecting Geopoints and Geosites, by walking, kayak, boat or bicycle.

The Geopark will include multiple Geosites across Banks Peninsula, highlighting blended elements (geology, flora and fauna, archaeology, te ao Māori, mātauranga Māori, heritage and sustainability). Geosites and Geotrails are designed to be self-guided, with the assistance of pamphlets (written and digital) and signboards.

It is anticipated that the Geosites and Geopoints will include the following:

- Bi-lingual signposting along a trail / track / roadway to individual Geopoints;
- Main Geosite map and introductory explanation – guide;
- Holistically presented information - not just one theme / view on an information panel – but intertwined stories;
- Information conveying physical location and what has occurred at the site;
- Information presented at an appropriate level on panels and pamphlets to allow self-guiding;
- Directions to further information;
- Linkage to providers within the community and community-based information hubs.

It is around these Geosites that informal and formal learning programs will be developed.

Visions of the Te Pātaka o Rākaihautū / Banks Peninsula Geopark

- Celebrating our land, tikanga and stories.
- Creating an identity of international significance founded on the geological, biological, heritage, and cultural features, and the communities, of Te Pātaka o Rākaihautū / Banks Peninsula.
- Promoting national and international awareness of Geosites as icons of Aotearoa / New Zealand's unique landscape and culture.
- Supporting and stimulating ongoing scientific research and science communication.
- Educating, promoting and relating human histories and their significance to Aotearoa / New Zealand.
- Bringing together Te Pātaka o Rākaihautū / Banks Peninsula's communities, by providing a framework for social, economic, cultural, environmental, and educational interaction.
- Promoting conservation and restoration through education, not legislation.
- Naturally evolving through interaction, partnership, and collaboration with the communities of Te Pātaka o Rākaihautū / Banks Peninsula.

What are the benefits of a Geopark?

Geoparks are fundamentally a learning and engagement tool, primarily through place-based learning – using the environments of Banks Peninsula as open-air classrooms. The Geopark would look to develop, in partnership: information panels telling connected stories, formal educational curriculums, and guided experiences.

Te Pātaka o Rākaihautū / Banks Peninsula Geopark can provide a mechanism to relate and convey blended elements (geology, flora and fauna, archaeology, te ao Māori, mātauranga Māori, heritage and sustainability) and their connection with place and the landscape of Te Pātaka o Rākaihautū / Banks Peninsula. The Geopark would offer new and various ways to do this, including: linked information panels in an area telling a connected story; local guided experiences; learning opportunities for school, university, and other groups; and locally based Geopark-accredited ventures and providers.

Internationally, Geoparks are hugely successful at bringing employment opportunities to local communities, and in some instances revitalising small communities. Such opportunities directly relate to the development and delivery of the Geopark, through new and novel businesses, the supporting of visitors, and direct visitor engagement.

Why is Rūnanga a key element of Te Pātaka o Rākaihautū / Banks Peninsula Geopark?

We all have a connection to the place, Te Pātaka o Rākaihautū / Banks Peninsula. We have all journeyed to this area, and many of us have chosen to call this home. Te Papatipu rūnanga, mana whenua, of Te Pātaka o Rākaihautū, have the longest connections and relations to Te Pātaka o Rākaihautū / Banks Peninsula. With this comes knowledge, traditions, communities, family, sense of place, wellbeing, and Mauri.

Māori have an intricate, holistic and interconnected relationship with the natural world and its resources, with a rich knowledge base – Mātauranga Māori – developed over thousands of years. Internationally, this is a unique perspective, and in our current changing world, this should be, and needs to be, voiced.

Mātauranga Māori, te reo Māori and whakapapa can be used together to empower indigenous perspectives and understandings of the environment, and be presented as such within the Te Pātaka o Rākaihautū / Banks Peninsula Geopark.

Māori are the first geologists of Aotearoa, and many sites, stories, and artefacts of Te Pātaka o Rākaihautū / Banks Peninsula record this, and continue to tell us this. The Geopark will offer a way to showcase these as well as convey te ao Māori, Mātauranga Māori, oral histories, and connection with the landscape of Te Pātaka o Rākaihautū. The formats in which these are conveyed is to be directed and agreed on by the rūnanga. In Global Geoparks, this is either by information panels, orally as guided experiences, open air learning, or in a formal setting (i.e. museum).

Te Pātaka o Rākaihautū / Banks Peninsula Geopark has the ability to convey, relate, and interact with a living indigenous culture, leading to genuine cultural experiences, and connections.

How and What a Geopark can offer?

How and what the Geopark can offer is dependent and directed by the community.

Te Pātaka o Rākaihautū / Banks Peninsula Geopark can:

- Provide various mechanisms to convey, engage, and tell stories;
- Become a vehicle for sustainable development, community based opportunities and growth, and develop outstanding educational programs;
- Be an opportunity to educate and connect people to the places, people, history and whakapapa;

- Provide a further platform to educate, maintain, and enhance te ao Māori, Mātauranga Māori, Mauri and Māori management systems;
- Support and improve indigenous biodiversity.

There are a number of ways Te Pātaka o Rākaihautū / Banks Peninsula Geopark wishes to lead, direct, communicate, engage and convey.

1. Knowledge - improve public access and information on geology, flora and fauna, archaeology, oral traditions, mātauranga Māori, heritage, communities, and conservation.
2. A voice for the landscape - recognition, understanding, and awareness of Te Pātaka o Rākaihautū / Banks Peninsula's landscape, rocks, soils, freshwater, waterways, valleys, harbours, lakes, beaches, estuaries, shorelines, cliffs, etc.
3. A voice for the environment - recognition, understanding, and awareness of Te Pātaka o Rākaihautū / Banks Peninsula's unique natural heritage including flora and fauna, biodiversity, endemic species, and geodiversity (interconnected relationship of rocks, soils, landscapes, and waterways to biodiversity).
4. Protection of natural, physical, and cultural heritage through learning, education, and awareness.
5. Understanding and recognition of natural, physical, and cultural heritage through education, learning, and awareness.
6. Further voice mana whenua values - a platform for Papatipu Rūnanga to convey their mātauranga Māori - recognise, understand, and raise awareness of te ao Maori
7. Local, place-based educational opportunities for wide audiences - activate lifelong learning and in doing so preserve and protect our natural environment, iconic landscapes, and places of indigenous and historic significance.
8. Slow, experiential, high value visitors engaging with place - focusing on engaging locals in their backyard, a new model of engagement and understanding, and a reimagining of Te Pātaka o Rākaihautū / Banks Peninsula as a destination.
9. A coordinating principle for the numerous and varied initiatives already occurring throughout Te Pātaka o Rākaihautū / Banks Peninsula.

The Geopark Model for Te Pātaka o Rākaihautū / Banks Peninsula

The Geopark looks to convey the stories of the landscape. What this means is that we wish to focus on how people have interacted, interpreted and utilised the landscape over time, and how this knowledge changes when viewed through different lenses.

Te Pātaka o Rākaihautū / Banks Peninsula Geopark is designed as an engagement and educational platform: informing locals and visitors about the region's geology, flora and fauna, archaeology, oral traditions, mātauranga Māori, heritage, communities, conservation, and organisations. The Geopark aims to encourage the local Canterbury population to engage with Banks Peninsula through experiences, trails, information panels, open air learning, field trips, research, and digital interfaces as well as attract local / national and international visitors to Banks Peninsula. Because of what the Geopark model offers, visitors are immersed in the landscape more than traditional visitors. This results in a stronger connection to place and more time spent experiencing the area, benefitting the local economy.

Core Geopark Activities

On-ground information panels - Panels at sites of interests (Geopoints) within a Geosite

Online and digital platform(s) - Website, apps, online resources

Classroom resources - Packaged learning plans and associated resources

Field trip curricula - Supported (led by Geopark or affiliated staff) and unsupported (educator led)

GeoCamps - Supported through Geopark staff and in collaboration with Banks Peninsula based providers

Public talks - Geopark staff, local experts, invited experts, researchers

Public tours / guided walks - Geopark staff, researchers, experts

Geopark short courses - Geopark staff

Geopark Brand - For use by affiliated business communities

Development in Collaboration with the Community

Through engagement with the community we have encountered a strong desire for information about and understanding of the Banks Peninsula landscape, history, environment, and communities. A recent community hui in Akaroa, 14 November 2019, including community board, deputy Mayor, and community members and groups was called to determine the communities perceptions and directions for Banks Peninsula in the future. A comment which we believe is a fundamental call to action for the Geopark is that "people felt that the peninsula's strength and opportunities lie in the environment and ecotourism and educational tourism".

Te Pātaka o Rākaihautū / Banks Peninsula has a unique geologic history that forms the foundation for the endemic flora and fauna, diverse environments and microclimates, and recognisable landforms that characterize the Peninsula. 30+ combined years of work on Banks Peninsula has shown that the regional and national community have little awareness of the history of Banks Peninsula's geology, biodiversity, cultural history, and land-use history. Hui with the Banks Peninsula community board, rūnanga, and relevant agencies have expressed a desire for an education-based initiative that elevates Banks Peninsula as a significant place with unique assets and needs. The Geopark offers this platform.

Selected Community Engagement Events and Relationships

Community Events

Akaroa French Fest (2019, 2017, and 2015) Geopark display on ongoing research and the Geopark itself.

Okains Bay Māori and Colonial Museum Waitangi Day Celebrations (2021, 2020, 2019, and 2018) Geopark display on ongoing research, the Geopark itself, and an interactive sand volcano activity.

A&P Shows. Stall display at Duvauchelle A&P Show 2021 and Banks Peninsula / Little River Show 2021. Enthusiastic support from those that visit from the farming community.

Purpose, Partnership and Development of Te Pātaka o Rākaihautū / Banks Peninsula Geopark 8

Geopark Walks

Akaroa Frenchfest - recent free guided walk attended by over 50 participants to Childrens Bay.

Banks Peninsula Walking Festival - (2019) 25 attendees, (2018) 2 walks each with over 35 participants (most attended walks in festival), (2017) 35 participants.

Beca Heritage Walking Festival - (2019) 25 attendees. Beca Walking Festival walk was presented along location points that would be sign posted within Te Onepoto – Awaroa / Taylors Mistake - Godley Head Geosite.

Attendance at these events, repeat customers, and participant engagement demonstrate a lack of knowledge about Banks Peninsula and a desire to learn and engage further.

Attendees of our walks are supportive of the Geopark concept and appreciate the knowledge conveyed. Many respond via email with suggestions on how to further the Geopark initiative, request for resources and volunteer opportunities, and are looking for ways to further support the development of the project.

Community Hui

Community hui (April 2015 and Dec 2018). An overall level of support for the development of a Geopark on Banks Peninsula (we can provide a list of supporting organisations mapping our ecosystem).

Papatipu Rūnanga

Direct and ongoing Papatipu Rūnanga involvement in the project. Early engagement and consultation, directed by Peter Ramsden. Signed MOU between the four Papatipu Rūnanga of Banks Peninsula.

Council

Council presentation at LTP proceedings - ECAN and CCC - level of encouragement and support for the project - part of our initiating awareness campaign.

Letter of support from Mayor Lianne Dalziel (Christchurch City Council) for UNESCONZ EOI April 2018 and 2020 Rata Foundation application.

Formal meetings and discussions with Mayor Sam Broughton (Selwyn District Council).

Discussions, agreements, and ongoing collaboration with Environment Canterbury.

Agencies

Ongoing meetings, encouragement, and support from ChchNZ.

Discussions, agreements, and ongoing collaboration with Department of Conservation.

Support for the project from Okains Bay Maori and Colonial Museum and Akaroa Museum.

Discussions, agreements, and ongoing collaboration with Rod Donald Banks Peninsula Trust.

Ongoing meetings and encouragement from Banks Peninsula Conservation Trust.

What the Geopark Looks Like on the Ground: Geosites

Seed funding has been received by the Geopark Trust from the Rod Donald Banks Peninsula Trust and from the Rata Foundation to develop the first Geosites on Banks Peninsula. Rod Donald Banks Peninsula Trust Funding is directly for the development and installation of a Geosite within Te Pātaka o Rākaihautū / Banks Peninsula Geopark. It will be the first of a series of Geosites within the Geopark highlighting blended elements of geology, flora and fauna, archaeology, te ao Māori, Mātauranga Māori, heritage and sustainability.

The intent of the trial Geosite is to create a show piece for the Geopark. The Geosite components will be developed to the highest standard so as to capture public imagination and support and to enable its use as both a template and a springboard for future Geosites, partnerships, and funding applications. The Geosite is to be along the Governors Bay Foreshore Walking & Cycling Track between Governors Bay Jetty and Allandale Reserve. Ōhinetahi / Governors Bay has been selected as the first Geosite in the Geopark as it is a well trafficked walkway that is part of the Head to Head Walkway, it has impressive geological features, and has connections with key partner organisations. In addition, Living Springs use this walkway in its open air learning programs and the interpretation panels will further support these and future learning initiatives for educational groups and the public in general.

A Geosite is comprised of two types of interpretation panels: Keystone Panels and Geopoint Panels. A Keystone Panel is the first panel that a visitor will encounter when entering a Geosite; it will inform and direct the visitor. Geopoint Panels are low-profile interpretation panels that are located within the Geosite. They will direct the visitor's attention to a specific feature, story, or view found at that location. It is planned that a Geosite will host 8 – 12 Geopoint panels and at least 1 keystone panel.

The first Geosite will create an on ground show piece for the Geopark. The Ōhinetahi / Governors Bay Geosite will be developed to the highest standard to capture public imagination and support. Importantly this Geosite will be used as a template and springboard for future Geosites, partnerships, community engagement, and learning opportunities.

Identified foundational Geosites of Te Pātaka o Rākaihautū / Banks Peninsula Geopark are in locations that are publicly accessible and have existing infrastructure; are founded on sites of international geological significance; cover a range of blended elements (geology, flora and fauna, archaeology, oral traditions, mātauranga Māori, heritage and sustainability); span varying areas of Banks Peninsula; and have existing levels of supporting information, documentation, and prepared resources.

Geopark Trust

Our Trust and Working Group members are experienced and knowledgeable. Many are currently involved in Trusts on Banks Peninsula. Current trustees are also members of our Working Group.

Trustees

Dr Peter Almond

Associate Professor, Faculty of Agriculture and Life Sciences, Soil and Physical Sciences Department. Extensive research and publication history, and expert on Banks Peninsula and Aotearoa's soils and loess.

Dr Elisabeth Bertolett

PhD on Akaroa Volcanic system. Field teacher and lecturer, experienced field guide, with 5 years mentoring undergraduate research.

Marie Haley

Owner operator of Seventh Generation. Local expert guide for Akaroa region. Former wildlife ranger and Wildside coordinator for Banks Peninsula Conservation Trust.

Nigel Hampton, CNZM, OBE, QC

Member (and sometime chair) of many educational and charitable bodies (former chair of Okains Bay Maori and Colonial Museum); member (and sometime chair) of many disciplinary bodies (including rugby, racing and legal practitioners); office holder in a number of legal professional governing bodies.

Dr Sam Hampton

Lecturer in Geology, School of Earth and Environment, U of Canterbury. Former Director of Academic Programmes, Frontiers Abroad Aotearoa. Expert on volcanology of Banks Peninsula, PhD on Lyttelton Volcano, field teacher and lecturer, experienced field guide, consultant on CCC learning programs, active researcher on Banks Peninsula, 10 years mentoring undergraduate and graduate research, and Geopark expert.

Dr Ben Kennedy

Associate Professor, School of Earth and Environment, U of Canterbury. Extensive research and publication history, expert in geoeducation and place-based learning, expert in virtual field trips, and award winning teacher.

Dr Hamish Rennie

Associate Professor, Department of Environmental Management, Lincoln University. Expert in geographical and planning technical skills and knowledge and the application of these to environmental problem solving.

Alice Shanks

QEII Regional Representative for Canterbury Central. Expert in vegetation surveys, co-ordinator for volunteer groups, and proponent for naturalisation of urban environments. Works closely with landowners and agencies on Banks Peninsula.

Andrew Spanton

Biodiversity Coordinator, Selwyn District Council. Expert in biodiversity, planning and community engagement and relationships.

Professor Bryan Storey

Professor and former Head of Department, Gateway Antarctica, University of Canterbury. Extensive research and publication history, expert in Antarctic geology and history (connections with Banks Peninsula), experienced geologist and lecturer.

Contact

This document has been prepared by Te Pātaka o Rākaihautū / Banks Peninsula Geopark Trust.

Primary Contact

Dr Sam Hampton

Principal Investigator

Te Pātaka o Rākaihautū / Banks Peninsula Geopark Trust

Te Pātaka o Rākaihautū / Banks Peninsula Geopark

+64 2108826875

bankspeninsulageopark@gmail.com

17 Ramahana Road, Huntsbury, Christchurch, 8022.

www.bpgeopark.com/

www.facebook.com/BanksPeninsulaGeopark/

9. Diamond Harbour Wharf Upgrade

Reference / Te Tohutoro: 20/1421167

Report of / Te Pou
Matua:

Sylvia Docherty, Senior Project Coordinator,
Sylvia.Docherty@ccc.govt.nz

Sam Sharland, Engagement Advisor, Sam.Sharland@ccc.govt.nz

General Manager /
Pouwhakarae:

Mary Richardson, General Manager Citizens & Community,
Mary.Richardson@ccc.govt.nz

1. Purpose of the Report / Te Pūtake Pūrongo

- 1.1 The purpose of this report is to advise the Te Pātaka o Rākaihautū/Banks Peninsula Community Board of the outcome of community consultation, and to request that it recommends proceeding with the design and construction of the floating pontoon and upgrade to the existing wharf. This report has been staff generated following key stakeholder and community consultation in October/November 2020.
- 1.2 The decision in this report is of low significance in relation to the Christchurch City Council's Significance and Engagement Policy. The level of significance was determined using the significant assessment criteria.

2. Officer Recommendations / Ngā Tūtohu

That the Te Pātaka o Rākaihautū/Banks Peninsula Community Board recommends that the Urban Development and Transport Committee:

1. Approves staff proceeding with the design and construction of the floating pontoon and upgrade works to the Diamond Harbour Wharf.

3. Reason for Report Recommendations / Ngā Take mō te Whakatauranga

- 3.1 The Diamond Harbour Wharf is due for an upgrade to improve safety and accessibility recognising current problems with the stairs which are unsuitable for wheelchairs and difficult to manoeuvre bicycles and pushchairs. Investigative work has determined that installation of a floating pontoon and repair of the existing wharf will address these issues.
- 3.2 Public consultation feedback is overall supportive of the proposed changes.
- 3.3 The report recommendations allow the progress of the project delivery.

4. Alternative Options Considered / Ētahi atu Kōwhiringa

- 4.1 The other option considered is, Do Nothing. This option is available but will not address the issues of safety and accessibility for passengers accessing the ferry and will lead to further deterioration of the existing wharf.

5. Detail / Te Whakamahuki

- 5.1 The main use of the wharf is the Diamond Harbour Ferry terminal. The ferry transports locals and visitors between Lyttelton and Diamond Harbour and is part of the public transport network managed by Environment Canterbury. Black Cat Cruises are the contracted ferry

- operator. The wharf is also used by fishers, recreational boat owners, kayakers, recreational wharf jumpers, swimmers and tourists.
- 5.2 The conservation report identifies a small jetty in this location in the 1850s, which was extended in 1874. The wharf was reconstructed in 1915, following the residential subdivision of Diamond Harbour in 1913. It retains this form with alterations including the Sea Scouts boat canopy and replacement passenger and bicycle shelters. The report is unable to confirm when the derrick crane was installed (not present in 1915) with the earliest available photograph of the crane taken in 1949.
- 5.3 Investigations into potential sites for the new pontoon found the best location is on the South side of the wharf. This is the most protected place for people to disembark and is more protected from wind and wave action. The pontoon will be 18m length and 4.5m – 6m wide attached to four piles which will be driven into the seabed approximately 6m deep. A gangway that is 1.8m wide with high-sided rails will provide access to the wharf.
- 5.4 The relocation of the crane is being considered as the connection between the existing wharf and the planned pontoon is where the crane is currently situated. The crane is no longer used for the lifting of materials / goods but is enjoyed by wharf jumpers who climb and sling from the rope attached to the end of the crane. The structural inspection carried out in July 2020 recommended a risk assessment of this activity. This has been undertaken and reports that jumping from a rope suspended from the crane would not generate sufficient momentum and force to penetrate and collide with the seabed. Signage to raise awareness of hazards is recommended. The proposed new location is above water of a similar depth to the current crane position and swimmers can make use of the steps.
- 5.5 A swing mooring owned by Naval Point Yacht Club will require to be relocated as it is in the path the ferry will use to access the new pontoon. Discussions are underway with Environment Canterbury to determine a suitable alternative location for the mooring, within the same area.
- 5.6 Feedback from some of the yacht owners who lease nearby Council moorings noted the side of the pontoon identified for recreation boats will not be suitable for yachts that require 2m water depth.
- 5.7 The upgrade of the existing wharf will include the following:
- 5.7.1 Repair of the existing decking. A composite material which has been used in other wharves as well as local projects is being explored as an alternative to suitable timber which is difficult to source. The composite option has an anti-slip surface that is UV protected providing a long life span and low maintenance.
 - 5.7.2 Repair, replacement or installation of handrails as required noting the area where the crane is currently positioned does not have handrail.
 - 5.7.3 Additional energy efficient lighting in proximity to the location of the gangway.
 - 5.7.4 Installation of bike storage in the existing bike shed.
 - 5.7.5 Investigations into the removal of the stairs currently used by ferry passengers will be undertaken whilst noting a small number of submissions requested to retain the stairs.
 - 5.7.6 Investigations into installation of posts for affixing a shade sail over the wharf.
 - 5.7.7 Investigations into accessibility options for the slope of the gangway that connects the pontoon to the existing wharf. The project was presented to the Disability Advisory Group on 15 December 2020 to gain feedback on possible options for maximum slope including 1 in 4.5, 1 in 8 and 1 in 12 (1 in 4.5 being the steepest). There is no New

Zealand compliance requirements for gangways or marine structures. The Lyttelton terminal for the ferry currently has a 1 in 4.5 slope. To date, staff have been referencing the Australian Standard 3962 Guidelines for Design of Marinas.

- 5.8 Consultation was open from 23 October to 11 November. To advise people that they could have their say, we installed a sign at the wharf, including consultation documents. We supplied a number of the consultation documents to the local businesses and the local library and attached them to the community notice boards. We had a 'Have Your Say' page which included more information on the design of the wharf, and the history.
- 5.9 On Saturday 7 November we were available on the wharf, from 8.30am to 10.30am, if any of the local residents wanted to come and have a chat about the project. We spoke to four people, all of whom liked the idea of the upgrade and the new pontoon. They asked about the upcoming parking changes and just wanted a better understanding on the design of the new pontoon.
- 5.10 When the consultation was open we heard from 67 people, mainly from locals and the local bays. All but one of the submissions agree with the upgrade and the majority of them like the idea of the floating pontoon. The one comment that did not support the upgrade as they didn't want to see the 100 year old planks disappear.
- 5.11 Access on to the ferry has been difficult for some people, and we heard that this design would benefit them greatly; submitter 35439 – 'as a disabled person this will make using the ferry much easier for me', submitter 35608 – 'My elderly Mum wasn't able to stay here because no access for infirm'.
- 5.12 There were a lot of comments on keeping the crane, and some of these wanted the steps retained to help people out of the water. We also received comments asking for a disconnected floating swimmer's pontoon and an option for launching kayaks from the floating dock.
- 5.13 There were a small number of comments on how E-bikes have become more popular and that the new ramp and pontoon will encourage more people to use the ferry.
- 5.14 We had a lot of support for the floating pontoon and the main wharf upgrade. The majority of the submissions were about keeping the crane and making sure people had room to swing and swim.
- 5.15 The decision affects the following wards/Community Board areas:
- 5.15.1 Mt Herbert / Te Pātaka o Rākaihautū/Banks Peninsula Community Board.

6. Policy Framework Implications / Ngā Hīraunga ā- Kaupapa here

Strategic Alignment /Te Rautaki Tīaroaro

6.1 This report supports the [Council's Long Term Plan \(2018 - 2028\)](#):

6.1.1 Activity: Parks & Foreshore

- Level of Service: 10.8.1.3 Provision of a network of publicly available marine structures that facilitate recreational and commercial access to the marine environment for citizens and visitors. - Wharves and Jetties ramps and slipways (condition average or better): 90%.

Policy Consistency / Te Whai Kaupapa here

6.2 The decision is consistent with Council's Plans and Policies.

Impact on Mana Whenua / Ngā Whai Take Mana Whenua

- 6.3 The decision does involve a significant decision in relation to ancestral land or a body of water or other elements of intrinsic value, therefore this decision does specifically impact Mana Whenua, their culture and traditions.
- 6.4 The concept design for the floating pontoon has been shared with Ngāti Wheke with no concerns raised. Environmental consultants carrying out investigations for the assessment of environmental effects have discussed the proposed works with Ngāti Wheke and will share with them the draft resource consent application once complete. Initial feedback is that a cultural impact assessment will not be required.

Climate Change Impact Considerations / Ngā Whai Whakaaro mā te Āhuarangi

- 6.5 There are no Climate Change impacts for this project. Although the proposed work is on the foreshore, long term sea level rise issues would be addressed through a Council strategic approach to coastal hazards.

Accessibility Considerations / Ngā Whai Whakaaro mā te Hunga Hauā

- 6.6 The pontoon and gangway will provide improved access to the ferry at Diamond Harbour and will be similar in design to the pontoon used at the current Lyttelton terminal. High sided rails will be included to provide support on the sloping gangway.
- 6.7 The gangway is required to have a minimum length of 15m in order to meet the maximum slope of 1V:4.5H required by Australian Standard 3962 – Guidelines for Design of Marinas. These slopes are similar to those at the Lyttelton ferry terminal floating pontoon and the Akaroa Wharf floating pontoons.

7. Resource Implications / Ngā Hīraunga Rauemi

Capex/Opex / Ngā Utu Whakahaere

- 7.1 Cost to Implement - \$1,969,218 CAPEX.
- 7.2 Maintenance/Ongoing costs – the new pontoon would be incorporated into the regular inspection of the wharf which takes place every three years.
- 7.3 Funding Source – CAPEX and OPEX will come from the existing harbour and marine structures budgets.

8. Legal Implications / Ngā Hīraunga ā-Ture

Statutory power to undertake proposals in the report / Te Manatū Whakahaere Kaupapa

- 8.1 The Urban Development and Transport Committee has delegated authority to monitor and make decisions on the Council's Transport functions including road operations, parking, public transport, cycle ways, harbours and marine structures in accordance with the Council's Long Term Plan.

Other Legal Implications / Ētahi atu Hīraunga-ā-Ture

- 8.2 The legal considerations are:
 - 8.2.1 A Resource Consent will be required to undertake this work. If the Community Board approves the project, staff will begin the process of obtaining the required consents.
 - 8.2.2 The Conservation Report identifies that the current wharf was reconstructed in 1915 and being built after 1900, it is not subject to the provisions of the Heritage New Zealand

Pouhere Taonga Act 2014 and no archaeological authority is required for modifying this structure.

8.3 This report has not been reviewed and approved by the Legal Services Unit

9. Risk Management Implications / Ngā Hīraunga Tūraru

- 9.1 Resource Consent – a non-notified consent process without onerous conditions has been assumed in the cost and programme estimates. If the project is subject to notification and/or onerous conditions it would adversely affect both elements.
- 9.2 Cost/Time – if a slope of 1 in 12 is required for the gangway to provide a smaller incline, it is expected that its length would be approximately 40ms long, the cost will be higher and will have to be custom made which will mean a longer manufacturing period as it will not be an off the shelf item). This will also impact the design of the pontoon (buoyancy) and correspondingly the design cost.

Attachments / Ngā Tāpirihanga

No.	Title	Page
A ↓	Concept drawing of proposed pontoon location	39
B ↓	Diamond Harbour Wharf Crane Picture 2020-11-07	40

In addition to the attached documents, the following background information is available:

Document Name	Location / File Link
Structural Assessment	https://ccc.govt.nz/assets/Documents/Consultation/2020/10-October/aDiamond-Harbour-Wharf-StructurAssessment-Calibre-August-2020-v2.PDF
Conservation Report	https://ccc.govt.nz/assets/Documents/Consultation/2020/10-October/Diamond-Harbour-Wharf-Upgrade-ervation-Report-Final-22.10.20.PDF
Floating Pontoon Assessment	https://ccc.govt.nz/assets/Documents/Consultation/2020/10-October/Diamond-Harbour-Wharf-OCEL-Options-Report-November-2019.PDF
Have Your Say	https://ccc.govt.nz/the-council/consultations-and-submissions/haveyoursay/show/344

Confirmation of Statutory Compliance / Te Whakatūtutanga ā-Ture

Compliance with Statutory Decision-making Requirements (ss 76 - 81 Local Government Act 2002).

(a) This report contains:

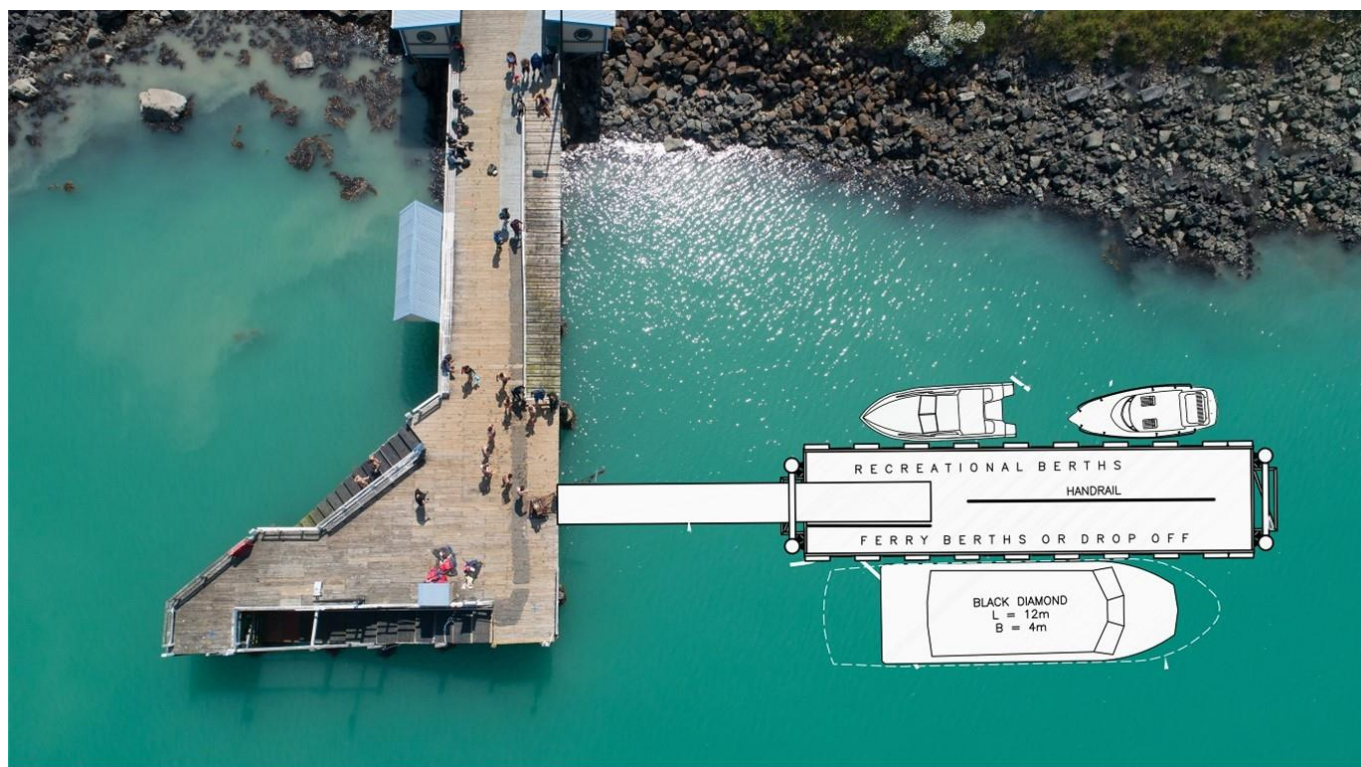
- (i) sufficient information about all reasonably practicable options identified and assessed in terms of their advantages and disadvantages; and
- (ii) adequate consideration of the views and preferences of affected and interested persons bearing in mind any proposed or previous community engagement.

(b) The information reflects the level of significance of the matters covered by the report, as determined in accordance with the Council's significance and engagement policy.

Signatories / Ngā Kaiwaitohu

Authors	Sylvia Docherty - Senior Project Coordinator Samantha Sharland - Engagement Advisor Karen McConachy - Programme Manager Community Facilities
Approved By	Kay Holder - Manager Regional Parks Darren Moses - Manager Capital Delivery Community Andrew Rutledge - Head of Parks Mary Richardson - General Manager Citizens & Community

Item 9





10. Te Pātaka o Rākaihautū/Banks Peninsula Community Board Area Report - March 2020

Reference / Te Tohutoro: 20/1614509

Report of / Te Pou Penelope Goldstone, CGM Banks Peninsula,
Matua: Penelope.Goldstone@ccc.govt.nz

General Manager / Mary Richardson, GM Citizens & Community,
Pouwhakarae: Mary.Richardson@ccc.govt.nz

1. Purpose of Report / Te Pūtake Pūrongo

This report provides the Board with an overview on initiatives and issues current within the Community Board area.

2. Officer Recommendations / Ngā Tūtohu

That the Te Pātaka o Rākaihautū/Banks Peninsula Community Board:

1. Receive the Te Pātaka o Rākaihautū/Banks Peninsula Community Board Area Report for March 2020.

3. Community Support, Governance and Partnership Activity

3.1 Community Governance Projects

Activity	Detail	Timeline	Strategic Alignment
Akaroa Community Hui	Akaroa Resource Collective are planning to run a Community Hui late February to welcome the new Vicar, Headmaster, Pharmacist, and farewell the Health Hub Manager. There will also be time allocated to discuss how the community is faring post Covid-19 lockdown.		Enabling active and connected communities to own their future.
Former Godley House site	A new approach is being made to the Department of Conservation to consider the revocation of a small part of the reserve. This would allow for commercial development in the future, as desired by the community.	January 2020	Enabling active and connected communities to own their future.
Activation of Governors Bay Community Centre	Working with the Governors Bay Community Association to put in place an appropriate activation agreement that meets their needs and those of the Council.	January 2020	Enabling active and connected communities to own their future.
Activation of Allandale Hall	Working with the Allandale Reserve Management Committee to put in place an appropriate activation agreement that meets their needs and those of the Council.	January 2020	Enabling active and connected communities to own their future.

Little River Village Planning	The Little River Big Ideas Village Planning Project (stage one) is now complete with the installation of two 3D speed humps in the village centre car parking area.		
-------------------------------	---	--	--

3.2 Community Funding Summary

3.2.1 **Discretionary Response Fund (DRF)** – Two applications were approved by the Board at its meeting on Monday 1st February and one further application is scheduled to be considered for allocation at today's meeting. See attached for the full summary: **Attachment A.**

3.3 Participation in and Contribution to Decision Making

3.3.1 **Report back on other Activities contributing to Community Board Plan [for items not included in the above table but are included in Community Board Plan]**

- **Council Engagement and Consultation**

- Environment Canterbury (Ecan) Long Term Plan (LTP).
The Draft Ecan LTP is due for approval on 25 February 2021 with the submission period opening on 8 March and closing on 11 April 2021.

If the Council makes a submission to the Plan, the Board can forward any issues it wishes to raise, to be considered for inclusion as part of the Council's submission. If the Council does not make a submission the Board may wish to consider making its own.

Environment Canterbury staff and some Councillors have asked to brief the Board on the Draft Plan.

3.3.2 Capital Delivery Community Unit Update

Council current construction projects map

<https://ccc.govt.nz/the-council/future-projects/current-capital-works-programme-map>

Project: Akaroa Wharf Renewal

Project Phase: Plan / Investigation and Scheme Design

The renewal of the Akaroa Wharf considers the replacement of the existing wharf and requires careful consideration of functional requirements, heritage and community inputs. Engineering reports have confirmed the need for the full replacement of the wharf in the near future.

Staff are currently preparing reports for Council and public consultation to outline the preferred option for the wharf. The draft LTP budget has a forecast of \$18M over FY21 to FY 25 for the proposed project delivery.

A Multi Criteria Analysis (MCA) and Engineering Options report for the options has been developed for the project and to support decision making and consultation. The MCA includes a thorough review of issues and opportunities associated with the location and materials for the new wharf and is supported by high-level budget estimates for each option.

Project: Cressy Terrace Tennis Courts
Project Phase: Execute / Detailed Design

The earthquake caused damage to the tennis courts causing cracks and uneven areas on the court surface. This project is currently in the Detailed Design Stage with the project planned for completion June 2021.

Project: Delivery package for Memorials
Project Phase: Execute / Construction

This is a delivery package of five heritage assets requiring earthquake repairs or restoration. Four assets have been completed. Restoration of the Akaroa whaling try pots is subject to Resource Consent. This was approved 09/12/2020. The Conservation treatment will be scheduled to commence in February 2021.

Project: Delivery Package Marine Seawall Renewals
Project Phase: Execute / Detailed Design

To renew seawalls around Banks Peninsula and coastal areas. Some walls will require input from other Council asset Units and New Zealand Transport Agency (NZTA).

Financial year 2021 work is for the following.

Akaroa township seawall repairs between the wharf and fire station - in Board reporting and consent phase.

Akaroa boat park seawall repairs - in consent phase.

Sumner seawall repairs - in consent phase.

Project: Delivery Package Marine Structures Renewals
Project Phase: Execute / Construction

This programme of work is for the renewal of marine structures around Banks Peninsula which includes wharfs (excludes Akaroa wharf), jetties, slipways and boat ramps. FY21 programme is well underway with fully committed funding.

Project: Delivery Package Monuments and Artworks Renewals
Project Phase: Execute / Construction

A delivery package (FY19-29) is underway to conserve multiple artworks and monuments. The Britomart Canon restoration will commence once the scope for repair has been finalised. It is anticipated this work will commence in the new calendar year. Planning has commenced on the restoration of the Britomart memorial and Peverel Street Fountain. Overall the delivery package is tracking well and to budget.

Project: Diamond Harbour Wharf
Project Phase: Plan / Detailed Design

The Community Board will be briefed in early February. Investigations are currently underway on accessibility for the pontoon and options for upgrading the existing wharf.

Project: Garden of Tane Renewals
Project Phase: Execute / Detailed Design

Capital works to be undertaken in line with the reserve management plan and through consultation with the Reserve Management Committee. Financial year FY21 work is planned on nature play which is in concept design.

Project: Head to Head Governors Bay to Allandale Seawall Renewal
Project Phase: Plan / Investigation and Scheme Design

Staff are currently investigating options and working on designs for various sections of the sea wall between Allandale and Governors Bay.
Works to be staged over the 3 Financial Years where budget has been allocated. This will be reported to the Community Board to determine the appropriate next steps.
Delays due to the uncertainty around access along the foreshore for trucks delivering rocks due to slumping issues on Jetty Road. Considering options for this at the moment

Project: Head to Head Walkway
Project Phase: Execute / Construction

This project is to provide/construct a walkway around Lyttelton Harbour from Godley Head to Adderley Head.

Consultation on the route between Orton Bradley Park and Charteris Bay was undertaken during February/March 2019, the Community Board has approved one section of the route between the Charteris Bay Yacht Club and Paradise Beach. Staff are working closely with the local residents to determine the best route option between Orton Bradley Park and Paradise Beach. Staff are also working on sections of track upgrades, signage and route options for the rest of the Head to Head route.

This will be reported via the Head to Head Working Party and the Community Board in due course.

Current works: Cass Bay to Corsair Bay track improvements started in November 2020 and were completed prior to Christmas 2020, Coastal Cliffs Track safety improvements (first stages were completed prior to Christmas 2020, with the rest to follow early in the New Year).

Project: Little River Coronation Library
Project Phase: Execute / Investigation and Scheme Design

The Project is in the design phase with detailed design ongoing in preparation for final approvals. Procurement process initiated.

Project: Little River Play and Recreation Development
Project Phase: Execute / Investigation and Scheme Design

Staff are working with the Little River Wairewa Community Trust group to develop their vision for the space. The project team briefed the Community Board on 3 November 2020 prior to engagement with the community. The concept plans were out for feedback between 17 November and 08 December 2020, the final plans were presented

to the Community Board 15 February 2021. Funding/timing for construction to be confirmed in the Long Term Plan.

Project: Naval Point Development Plan
Project Phase: Plan / Investigation and Scheme Design

The Naval Point Development Plan (NPDP) includes a future vision for the overall development of Naval Point. The current Long Term Plan (LTP) budget includes funding for only the first stage of works and it is anticipated that additional funding will be required through subsequent LTP's, grants and partnership agreements.

The NPDP was approved by the Banks Peninsula Community Board on 30th November 2020 and a Part A report will be going to the Council on the 28th January 2021 regarding the Magazine Bay Marina issues.

The final NPDP includes high level budget and implementation plans with a focus on marine safety improvements.

Work to remove pontoon structures and contaminated soils from site will be completed in late December 2020.

Project: Okains Bay Campground Pavilion Earthquake Repair
Project Phase: Execute / Construction

Work continues with the floor strengthening and straightening of walls. A new shower block was installed prior to Christmas.

Next steps include finishing the floor and walls, starting the plumbing and drainage and wiring in late January.

Project: Okains Bay Renewal
Project Phase: Execute / Construction

Okains Bay Reserve - renewal of playground safety surfacing, landscaping, and furniture replacement. FY21 work is for a community planting and sand dune protection

Project: Port Levy Toilet Block Renewal
Project Phase: Plan / Investigation and Scheme Design

Project to upgrade the toilet facilities in Port Levy (including landscaping)

Staff are currently investigating options and have had some initial discussions with the local Rūnanga regarding a preferred location for the new facility. This will require further consultation with the wider community and be reported to the Community Board in due course.

Project: Purau foreshore and reserves project
Project Phase: Plan / Investigation and Scheme Design

Funding for this project is set for FY28 due to Annual Plan amendments

Project: Robinsons Bay Reserve Renewals
Project Phase: Execute / Construction

Project is for the development of Robinsons Bay Reserve and repairs on the wharf. The Reserve Committee and Parks Unit are working on the last information panels to be installed in the reserve.

Project: Stanley Park Renewal
Project Phase: Execute / Construction

This project is an ongoing project that involves the completion of works detailed in the Management Plan. FY21 work is for the installation of the pedestrian build-out at the main park entranceway on Beach Road.

3.3.3 Long Term Plan – Properties Identified for Disposal

Through its Long Term Plan the Council is making decisions about the future of its properties that are no longer being used for their original purpose. The Council owns many types of properties of all different shapes and sizes. Owning property comes at a cost, and it's good financial practice to continually review the portfolio to make sure it's still fit for purpose.

The Council is reviewing this list at its meeting on 4th March 2021 and will be seeking the community's views after this through consultation on the Draft 2021–31 Long Term Plan. This consultation opens in March 2021 for four weeks.

The Board will formally consider this matter once it is approved and inform the Council of local views through its Long Term Plan submission.

4. Advice Provided to the Community Board

- 4.1 **Pedestrian Access to Te Ana Marina** – At its meeting on 16 November 2020 the Board requested that staff provide advice on options to improve pedestrian access from Lyttelton to Te Ana marina. Staff have been working with LPC to provide pedestrian warning and wayfinding signage from Norwich Quay to Te Ana Marina; currently, there are two pedestrian road crossings along this route.

LPC is considering forming a new footpath on the north side of this road to create a continuous pedestrian route without road crossings, which is roughly indicated in blue on **Attachment B**. However, the opportunity for public consultation and Board discussion on this proposed pedestrian route will not come about for another 18 to 24 months. LPC will be in contact when these works are further along in the planning stage.

- 4.2 **Akaroa Seawall Project** – At its meeting on 5 October 2020, the Board resolved to:

Request that if appropriate, staff investigate central government funding for the additional 170 metres of seawall in between the Akaroa Wharf and the Beach Road / Rue Jolie intersection that is not part of the current project.

The Project Manager has reported back saying that he liaised with the Transport Team in respect to investigating the opportunity to access central government “shovel ready” funding to extend the scope of work to include the full length of seawall.

Staff discovered that by the time the Board requested this be investigated the timeframe to make those applications had already expired and all available funding had been fully allocated. Even if the application could have been submitted within the required time period,

it is still unlikely to have been successful as it would not have met the “shovel ready” threshold given that the project is still in the consenting phase.

4.3 Godley House Correspondence

A letter from the Chair of the Diamond Harbour Reserve Management Committee, in response to Council regarding the forthcoming submission on the future of Godley House, can be found on **Attachment C**.

4.4 Graffiti Snapshot

A graffiti Snapshot for January 2021 (**Attachment D**) was provided to the Board by the Community Support Unit.

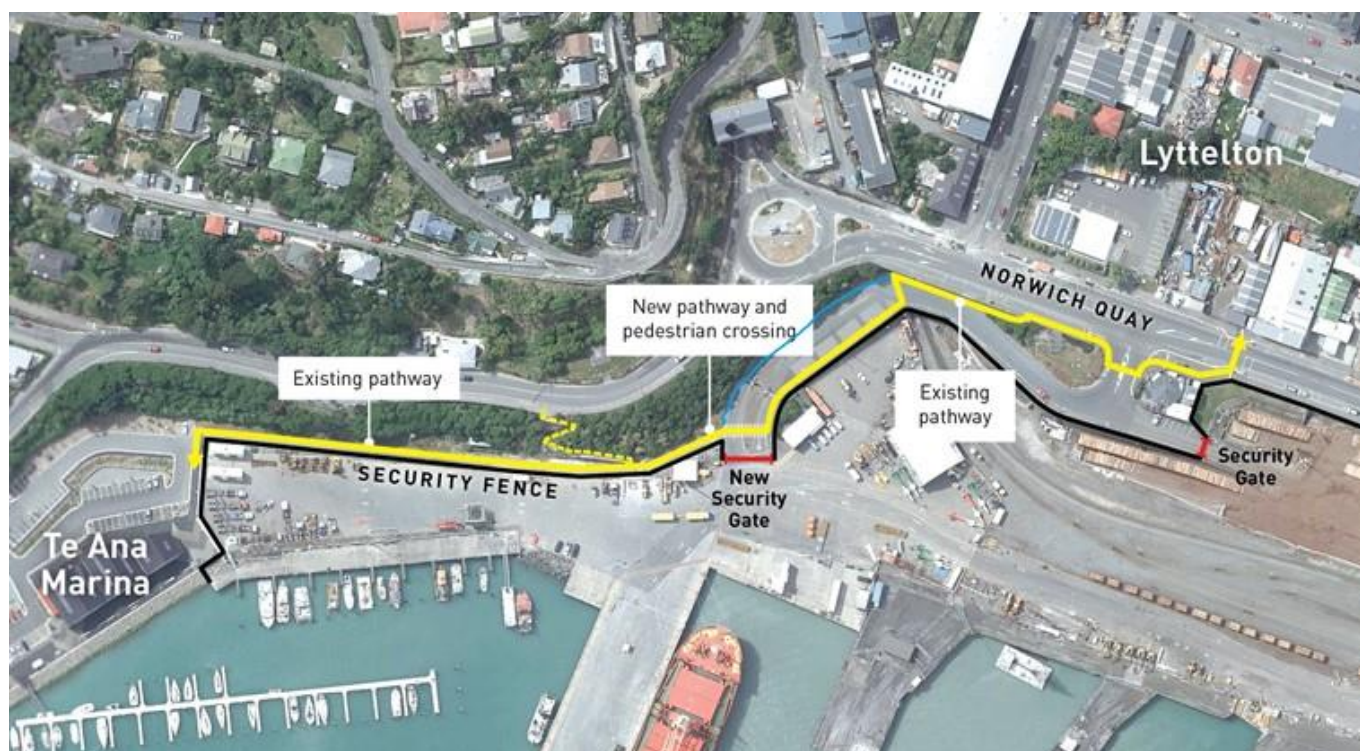
Attachments

No.	Title	Page
A ↓	Banks Peninsula Discretionary Response Fund FY 2020-2021 as at 3 February 2021	48
B ↓	Banks Peninsula Community Board - Pedestrian Access to Te Ana Marina	49
C ↓	Banks Peninsula Community Board Correspondence Diamond Harbour Reserve Management Committee - 2 February 2021	50
D ↓	January 2021 Graffiti Snapshot	51

Signatories / Ngā Kaiwaitohu

Authors	Adrianna Hess - Hearings and Council Support Officer Robin Arnold - Community Development Advisor Linda Burkes - Support Officer Philipa Hay - Community Development Advisor Andrea Wild - Community Development Advisor Trisha Ventom - Community Recreation Advisor Jane Harrison - Community Development Advisor Liz Carter - Community Board Advisor
Approved By	Penelope Goldstone - Manager Community Governance, Banks Peninsula Matthew McLintock - Manager Community Governance Team John Filsell - Head of Community Support, Governance and Partnerships

Banks Peninsula Discretionary Response Fund 2020/21		Board Approval
BUDGET	\$9,131.00	
Shape Your Place Toolkit (Ring-fenced within DRF)	\$7,000.00	Urban Regeneration
Transfer of unallocated 2020/21 Strengthening Communities funds to the 2020/21 Discretionary Response Fund	\$22,155.00	17/08/2020
Council decision for Covid 19 Funding	\$20,000.00	27/08/2020 Council Vote
Total BUDGET	\$58,286.00	
ALLOCATIONS MADE:		
Discretionary Response Fund		
Board Project: Summer with your Neighbours	\$3,000.00	22/06/2020 (allocated from 2020/21 DRF)
Banks Peninsula Community Board - Community Service Awards 2021	\$2,995.00	22/06/2020 (allocated from 2020/21 DRF)
Public Access Defibrillator - Te Hapu o Ngati Wheke	\$3,616.00	17/08/2020
Banks Peninsula Community Board - Elected Member Hui Assistance	\$657.00	19/10/2020
Te Puna Auaha Lyttelton Trust - Mural	\$4,000.00	7/12/2020
Diamond Harbour Events Inc. - Live at the Point	\$2,000.00	1/02/2021
Comte de Paris Descendants Group Inc. - 180 Year Anniversary Weekend	\$2,815.00	1/02/2021
Discretionary Response Fund Allocated	\$19,083.00	
Youth Development Fund		
Tier 1 National Water Polo Championships - Agatha Weston	\$150.00	10/09/2020
Tier 1 National Water Polo Championships - Eve Weston	\$150.00	10/09/2020
NZIODA 2020 Toyota Optimist National Sailing Championships - Benjamin Catton	\$150.00	10/09/2020
Youth Development Fund Allocated	\$450.00	
Shape Your Place Toolkit		
Little River Railway Station Front Entrance Doors	\$ 2,875.00	2/11/2020
Shape Your Place Toolkit Allocated	\$ 2,875.00	
TOTAL: Shape Your Place Toolkit Unallocated	\$ 4,125.00	
TOTAL: Discretionary Response Fund Unallocated	\$35,878.00	
Pending Board Approval		
Little River Wairewa Community Trust	\$2,000	
Pending Board Approval Balance	\$2,000	
TOTAL: Discretionary Response Fund Remaining if Pending approved	\$33,878.00	



Richard Suggate
Diamond Harbour Community Association.

cc. Tori Peden, Chair,
Banks Peninsula Community Board.

2nd February 2021

Dear Richard

Re: Response to CCC regarding their forthcoming submission on the future of Godley House site

Thank you for briefing the Reserve Management Committee on this subject at our meeting on 25 Jan 2021.

As resolved, we wish to express our support for the comments which you have drafted and which you intend to send to CCC before they in turn make their next submission to DOC.

The safeguarding of the reserve areas in the Diamond Harbour area is, of course, one of the guiding principles of the RMC. However, it is our judgement that the change of use proposed by the DHCA, for a small part (1500m² approx.) of the Stoddart Point Reserve (total 7.69 hectares), is one that may indeed lead to more effective protection of the remaining majority of the reserve. It is hoped that this change of use will be undertaken within the framework of agreed plans for the village, and that it should meet the desires of most of the local community as evidenced by the results of the recent consultation period.

In summary, we support the following points:

1 – That the change of use (to one that would allow the licensed bar/café supported by most local people) be applied to an area of approximately 1500m²; being the area previously inhabited by the Dark Star pub, and northwards up to the adjacent footpath. Most of this area is of relatively poor quality in reserve terms due to its position, predominant soil, and drainage problems. Furthermore, it would enable the proposed licensed bar/café to extend out towards the central part of the Godley House, thereby allowing local people better access to enjoying the majority of the reserve, but without encroaching too significantly upon the natural beauty of the area.

2 – That the change of use of this area be one part of the integrated redevelopment and protection of Stoddart Point, as outlined in the 2017 Village Plan. Such a holistic approach would benefit the local community while helping to avoid piecemeal developments which might have a far greater negative impact on the reserve.

We are ready to participate in further negotiations regarding the finer details of the proposals outlined in your draft comments.

Kind regards
Graeme Fraser
Chair, Diamond Harbour Reserve Management Committee

GRAFFITI SNAPSHOT JANUARY 2021

Ward & Suburb Insights



Ward Reporting

This is an indication (compared to the previous month) of how active our citizens are. Several people may report the same "tag" so this is not the best way to determine the amount of graffiti present.

Ward	# of Tickets	# of Tickets - Latest Month	# of Tickets - Previous Month	% Monthly Change
Banks Peninsula	35	23	12	92% ●
Burwood	163	78	85	-8% ●
Cashmere	36	17	19	-11% ●
Central	1,132	534	598	-11% ●
Coastal	478	305	173	76% ●
Fendalton	161	74	87	-15% ●
Halswell	46	33	13	154% ●
Harewood	62	16	46	-65% ●
Heathcote	132	88	44	100% ●
Hornby	48	26	22	18% ●
Innes	142	51	91	-44% ●
Linwood	167	73	94	-22% ●
Papanui	108	47	61	-23% ●
Riccarton	67	31	36	-14% ●
Spreydon	93	49	44	11% ●
Unknown	6	4	2	100% ●
Waimairi	15	6	9	-33% ●
Total	2,891	1455	1436	+1%

Ward Removal

This is an indication (compared to the previous month) of how much graffiti has been removed. This gives a better indication of the amount of graffiti present.

- Latest Month	Previous Month
M ²	M ²
140	44
203	208
47	44
1,825	1,649
931	251
176	259
189	424
58	118
248	156
70	50
198	260
317	561
130	201
71	108
189	213
35	54
4,826	4,599

Reporting Hot Spots

Streets/Locations with the most reported graffiti

Brighton	29
Colombo	26
Rawhiti Domain	24
Bealey	20
Hagley Park South	18
Oxford	18
Hawke	17
Papanui	16
Shaw	16
Shaw Avenue	16

Removal Hot Spots

Streets/Locations with the most graffiti removed (m2)

Lismore Street	288
Colombo	215
Thomson Park	191
Washington Way Reserve	130
Lincoln Road \ Bernard Street	120
Linwood Park	115
Rauora Park	111
Brighton	98
Kilmore Street \ Colombo Street	93

GRAFFITI SNAPSHOT JANUARY 2021

Further Insights

Volunteer Activity

Reports made by Graffiti Programme Volunteers

37%

551 Reports

14 Active Volunteers

Top Reporter

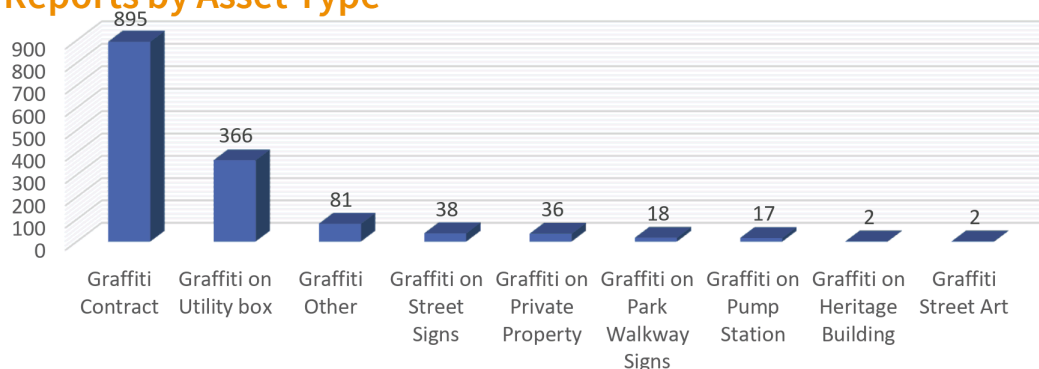
246 Joanne (Coastal Ward)

Most reported TAG

Locations and details of these TAGs are forward to the Police each month.

DOPEY intel
BADER MONG

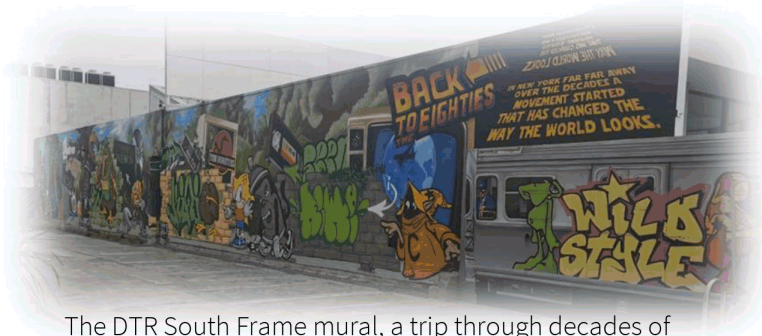
Reports by Asset Type



New Murals



Chorus Cabinet – Greg Pilbrow
Forth St



The DTR South Frame mural, a trip through decades of graffiti and pop culture history
Between Durham & Montreal

From the Police

2 proceedings

	Station	Action	Age
1	ChCh South	Formal Warning	17+
2	Papanui	Court Action	17+

11. Elected Members' Information Exchange / Te Whakawhiti Whakaaro o Te Kāhui Amorangi

This item provides an opportunity for Board Members to update each other on recent events and/or issues of relevance and interest to the Board.