

Parking Restrictions Subcommittee AGENDA

Notice of Meeting:

An ordinary meeting of the Parking Restrictions Subcommittee will be held on:

Date: Wednesday 3 April 2019
Time: 2pm
Venue: Committee Room 2, Level 2, Civic Offices,
53 Hereford Street, Christchurch

Membership

Members

Councillor Pauline Cotter
David Adamson - General Manager City Services
Richard Osborne - Head of Transport
David Griffiths - Head of Planning and Strategic Transport

29 March 2019

Aidan Kimberley
Committee and Hearings Advisor
941 6566
aidan.kimberley@ccc.govt.nz
www.ccc.govt.nz

Note: The reports contained within this agenda are for consideration and should not be construed as Council policy unless and until adopted. If you require further information relating to any reports, please contact the person named on the report.

To view copies of Agendas and Minutes, visit:

<https://www.ccc.govt.nz/the-council/meetings-agendas-and-minutes/>

Strategic Framework

The Council's Vision – Christchurch is a city of opportunity for all.

Open to new ideas, new people and new ways of doing things – a city where anything is possible.

Whiria ngā whenu o ngā papa Honoa ki te maurua tāukiuki

Bind together the strands of each mat
And join together with the seams of respect
and reciprocity.

The partnership with Papatipu Rūnanga
reflects mutual understanding and respect,
and a goal of improving the economic,
cultural, environmental and social
wellbeing for all.

Overarching Principle

Partnership – Our
people are our taonga
– to be treasured and
encouraged. By working
together we can create
a city that uses their
skill and talent, where
we can all participate,
and be valued.

Supporting Principles

Accountability	Collaboration
Affordability	Prudent Financial Management
Agility	Stewardship
Equity	Wellbeing and resilience
Innovation	Trust

Community Outcomes

What we want to achieve together as our city evolves

Strong communities

Strong sense of
community
Active participation in
civic life
Safe and healthy
communities
Celebration of our
identity through arts,
culture, heritage and
sport
Valuing the voices of
children and young
people

Liveable city

Vibrant and thriving
central city, suburban
and rural centres
A well connected and
accessible city
Sufficient supply of, and
access to, a range of
housing
21st century garden city
we are proud to live in

Healthy environment

Healthy waterways
High quality drinking
water
Unique landscapes and
indigenous biodiversity
are valued
Sustainable use of
resources

Prosperous economy

Great place for people,
business and investment
An inclusive, equitable
economy with broad-
based prosperity for all
A productive, adaptive
and resilient economic
base
Modern and robust
city infrastructure and
community facilities

Strategic Priorities

Our focus for improvement over the next three years and beyond

Enabling active citizenship and connected
communities

Maximising opportunities to develop a vibrant,
prosperous and sustainable 21st century city

Climate change
leadership

Informed and proactive
approaches to natural
hazard risks

Increasing active, public
and shared transport
opportunities and use

Safe and sustainable
water supply and
improved waterways

Part A	Matters Requiring a Council Decision
Part B	Reports for Information
Part C	Decisions Under Delegation

TABLE OF CONTENTS

C	1.	Apologies.....	4
B	2.	Declarations of Interest	4
C	3.	Confirmation of Previous Minutes.....	4
B	4.	Public Forum.....	4
B	5.	Deputations by Appointment.....	4
B	6.	Presentation of Petitions	4

STAFF REPORTS

C	7.	Gloucester Street -Colombo Street to Manchester Street. New and Reconfirmed Parking and Stopping Restrictions	9
---	----	---	---

1. Apologies

At the close of the agenda no apologies had been received.

2. Declarations of Interest

Members are reminded of the need to be vigilant and to stand aside from decision making when a conflict arises between their role as an elected representative and any private or other external interest they might have.

3. Confirmation of Previous Minutes

That the minutes of the Parking Restrictions Subcommittee meeting held on [Wednesday, 6 March 2019](#) be confirmed (refer page 5).

4. Public Forum

A period of up to 30 minutes may be available for people to speak for up to five minutes on any issue that is not the subject of a separate hearings process.

5. Deputations by Appointment

There were no deputations by appointment at the time the agenda was prepared.

6. Petitions

There were no petitions received at the time the agenda was prepared.

Parking Restrictions Subcommittee OPEN MINUTES

Date: Wednesday 6 March 2019
Time: 2:15pm
Venue: Council Chambers, Level 2, Civic Offices,
53 Hereford Street, Christchurch

Present

Chairperson	Councillor Pauline Cotter
Members	David Adamson - General Manager City Services Richard Osborne - Head of Transport David Griffiths - Head of Planning and Strategic Transport

6 March 2019

Aidan Kimberley
Committee and Hearings Advisor
941 6566
Aidan.kimberley@ccc.govt.nz
www.ccc.govt.nz

Part A Matters Requiring a Council Decision

Part B Reports for Information

Part C Decisions Under Delegation

The agenda was dealt with in the following order.

1. Apologies

Part C

Committee Decision

There were no apologies.

2. Declarations of Interest

Part B

There were no declarations of interest recorded.

3. Confirmation of Previous Minutes

Part C

Committee Resolved PRSC/2019/00006

Committee Decision

That the minutes of the Parking Restrictions Subcommittee meeting held on Wednesday, 30 January 2019 be confirmed.

Member Osborne/Member Adamson

Carried

4. Public Forum

Part B

There were no public forum presentations.

5. Deputations by Appointment

Part B

There were no deputations by appointment.

6. Presentation of Petitions

Part B

There was no presentation of petitions.

7. Madras Street at Baptist Church- Parking and Stopping Restrictions Committee Resolved PRSC/2019/00007

Part C

That the Parking Restrictions Subcommittee:

1. Approves that any previous resolutions pertaining to parking or stopping restrictions made pursuant to any bylaw to the extent that they are in conflict with those described below are revoked.
2. Approves that the stopping of vehicles be prohibited at any time on the east side of Madras Street commencing at its intersection with Chester Street East and extending in a northerly direction for a distance of 26 metres.
3. Approves that the parking of vehicles be restricted to a maximum period of sixty minutes on the east side of Madras Street commencing at a point 26 metres north of its intersection with Chester Street East and extending in a northerly direction for a distance of 15 metres.
4. Approves that the stopping of vehicles be prohibited at any time on the east side of Madras Street commencing at a point 41 metres north of its intersection with Chester Street East and extending in a northerly direction for a distance to its intersection with Oxford Terrace.
5. Approves that these resolutions take effect when the parking signage and/or road markings that evidence the restrictions described above are in place (or removed in the case of revocations).

Member Adamson/Member Griffiths

Carried

8. Antigua Street at Christchurch Hospital Outpatients Committee Resolved PRSC/2019/00008

Part C

That the Parking Restrictions Subcommittee:

1. Approves that any previous resolutions pertaining to parking or stopping restrictions made pursuant to any bylaw to the extent that they are in conflict with those described below are revoked.
2. Approves that the stopping of vehicles be prohibited at any time on the west side of Antigua Street commencing at its intersection with Tuam Street and extending in a northerly direction for a distance of 11 metres.
3. Approves that the parking of vehicles be restricted to a maximum period of five minutes on the west side of Antigua Street, commencing at a point 11 metres north of its intersection with Tuam Street and extending in a northerly direction for a distance of 11 metres. This restriction is to apply at any time.
4. Approves that the parking of vehicles be restricted to a maximum period of 120 minutes and be reserved for vehicles with an approved disabled person's parking permit, prominently displayed in the vehicle, in accordance with section 6.4 (1) of the Land Transport (Road User) Rule 2004. This restriction is to apply at any time and be located

on the west side of Antigua Street, commencing at a point 22 metres north of its intersection with Tuam Street and extending in a northerly direction for a distance of 20 metres.

5. Approves that the stopping of vehicles be prohibited at any time on the west side of Antigua Street commencing at a point 31 metres north of its intersection with Tuam Street and extending in a northerly direction to its intersection with Oxford Terrace.
6. Approves these resolutions take effect when the parking signage and/or road markings that evidence the restrictions described above are in place (or removed in the case of revocations).

Councillor Cotter/Member Osborne

Carried

9. Salisbury Street at Car Park Exit

Committee Resolved PRSC/2019/00009

Part C

That the Parking Restrictions Subcommittee:

1. Approves that any previous resolutions pertaining to parking or stopping restrictions made pursuant to any bylaw to the extent that they are in conflict with those below are revoked.
2. Approves that the stopping of vehicles be prohibited at any time on the south side of Salisbury Street commencing at its intersection with Durham Street South and extending in a westerly direction for a distance of 38 metres.
3. Approves that the stopping of vehicles be prohibited at any time on the south side of Salisbury Street commencing at a point 67 metres west of its intersection with Durham Street South and extending in a westerly direction for a distance of 14 metres.
4. Approves that these resolutions take effect when the parking signage and/or road markings that evidence the restrictions described above are in place (or removed in the case of revocations).

Member Adamson/Member Griffiths

Carried

Meeting concluded at 2.32 pm.

CONFIRMED THIS 3rd DAY OF APRIL 2019

7. Gloucester Street -Colombo Street to Manchester Street. New and Reconfirmed Parking and Stopping Restrictions

Reference: 19/209926

Presenter(s): Michael Thomson Transport Engineer

1. Purpose of Report

- 1.1 The purpose of this report is for the Parking Restrictions Subcommittee to approve new / reconfirm existing parking and stopping restrictions on Gloucester Street, between Colombo Street and Manchester Street.

2. Executive Summary

- 2.1 This report seeks approval for minor changes in parking and to reconfirm existing parking /stopping restrictions.
- 2.2 Many parking signs, as well as road markings have been lost due to activities such as demolitions, rebuilds and road resealing.

3. Staff Recommendations

That the Parking Restrictions Subcommittee:

1. Approves that any previous resolutions pertaining to parking and stopping restrictions made pursuant to any bylaw, on the north and south sides of Gloucester Street, commencing at its intersection with Colombo Street and extending in an easterly direction to its intersection with Manchester Street, be revoked.
2. Approves that the stopping of vehicles be prohibited at any time on the north side of Gloucester Street commencing at its intersection with Colombo Street and extending in an easterly direction for a distance of 15 metres.
3. Approves that the parking of vehicles be restricted to a maximum period of 60 minutes and controlled by Parking Meters, (including Pay and Display machines or any approved means of payment) on the north side of Gloucester Street, commencing at a point 15 metres east of its intersection with Colombo Street and extending in an easterly direction for a distance of 42 metres. This restriction is to apply Monday to Thursday from 9am to 6pm, and Friday to Sunday 9am to 8:30pm.
4. Approves that the stopping of vehicles be prohibited at any time on the north side of Gloucester Street commencing at a point 57 metres east of its intersection with Colombo Street and extending in an easterly direction for a distance of six metres.
5. Approves that the parking of vehicles be restricted to a maximum period of 60 minutes and controlled by Parking Meters, (including Pay and Display machines or any approved means of payment) on the north side of Gloucester Street, commencing at a point 63 metres east of its intersection with Colombo Street and extending in an easterly direction for a distance of 19 metres. This restriction is to apply Monday to Thursday from 9am to 6pm, and Friday to Sunday 9am to 8:30pm.
6. Approves that the stopping of vehicles be prohibited at any time on the north side of Gloucester Street commencing at a point 82 metres east of its intersection with Colombo Street and extending in an easterly direction for a distance of 17 metres.

7. Approves that the parking of vehicles be restricted to a maximum period of five minutes on the north side of Gloucester Street, commencing at a point 99 metres east of its intersection with Colombo Street and extending in an easterly direction for a distance of 29 metres. This restriction is to apply at any time.
8. Approves that the stopping of vehicles be prohibited at any time on the north side of Gloucester Street commencing at a point 128 metres east of its intersection with Colombo Street and extending in an easterly direction for a distance of seven metres.
9. Approves that the parking of vehicles be restricted to a maximum period of 120 minutes and be reserved for vehicles with an approved mobility person's parking permit, prominently displayed in the vehicle, in accordance with section 6.4 of the Land Transport-Road User Rule: 2004, on the north side of Gloucester Street, commencing at a point 135 metres east of its intersection with Colombo Street and extending in an easterly direction for a distance of eight metres. This restriction is to apply at any time.
10. Approves that the stopping of vehicles be prohibited at any time on the north side of Gloucester Street commencing at a point 143 metres east of its intersection with Colombo Street and extending in an easterly direction for a distance of five metres.
11. Approves that a cycle stand be created on the on the north side of Gloucester Street, commencing at a point 148 metres east of its intersection with Colombo Street and extending in an easterly direction for a distance of seven metres. This restriction is to apply at any time.
12. Approves that the stopping of vehicles be prohibited at any time on the north side of Gloucester Street commencing at a point 155 metres east of its intersection with Colombo Street and extending in an easterly direction for a distance of 20 metres. *Note: This No stopping restriction traverses the exit from the New Regent Street Pedestrian Mall.*
13. Approves that the parking of vehicles be restricted to a maximum period of five minutes on the north side of Gloucester Street, commencing at a point 175 metres east of its intersection with Colombo Street and extending in an easterly direction for a distance of 5.5 metres. This restriction is to apply at any time.
14. Approves that the parking of vehicles be restricted to a maximum period of 60 minutes and controlled by Parking Meters, (including Pay and Display machines or any approved means of payment) on the north side of Gloucester Street, commencing at a point 180.5 metres east of its intersection with Colombo Street and extending in an easterly direction for a distance of 17.5 metres. This restriction is to apply Monday to Thursday from 9am to 6pm, and Friday to Sunday 9am to 8:30pm.
15. Approves that the stopping of vehicles be prohibited at any time on the north side of Gloucester Street commencing at a point 198 metres east of its intersection with Colombo Street and extending in an easterly direction to its intersection with Manchester Street.
16. Approves that the stopping of vehicles be prohibited at any time on the south side of Gloucester Street commencing at its intersection with Manchester Street and extending in a westerly direction for a distance of 24 metres.
17. Approves that the parking of vehicles be restricted to a maximum period of five minutes on the south side of Gloucester Street, commencing at a point 24 metres west of its intersection with Manchester Street and extending in a westerly direction for a distance of 34 metres. This restriction is to apply at any time.
18. Approves that the stopping of vehicles be prohibited at any time on the south side of Gloucester Street commencing at a point 58 metres west of its intersection with Manchester Street and extending in a westerly direction for a distance of 37 metres.

19. Approves that the parking of vehicles be restricted to a maximum period of five minutes on the south side of Gloucester Street, commencing at a point 95 metres west of its intersection with Manchester Street and extending in a westerly direction for a distance of 10 metres. This restriction is to apply at any time.
20. Approves that a motorcycle stand be created on the south side of Gloucester Street, commencing at a point 105 metres west of its intersection with Manchester Street and extending in a westerly direction for a distance of four metres. This restriction is to apply at any time.
21. Approves that the stopping of vehicles be prohibited at any time on the south side of Gloucester Street commencing at a point 109 metres west of its intersection with Manchester Street and extending in a westerly direction for a distance of 44 metres.
22. Approves that the parking of vehicles be restricted to a maximum period of five minutes on the south side of Gloucester Street, commencing at a point 153 metres west of its intersection with Manchester Street and extending in a westerly direction for a distance of 12.5 metres. This restriction is to apply at any time.
23. Approves that the parking of vehicles be restricted to a maximum period of 120 minutes and be reserved for vehicles with an approved mobility person's parking permit, prominently displayed in the vehicle, in accordance with section 6.4 of the Land Transport-Road User Rule: 2004, on the south side of Gloucester Street, commencing at a point 165.5 metres west of its intersection with Colombo Street and extending in a westerly direction for a distance of 14.5 metres. This restriction is to apply at any time.
24. Approves that the stopping of vehicles be prohibited at any time on the south side of Gloucester Street commencing at a point 180 metres west of its intersection with Manchester Street and extending in a westerly direction to its intersection with Colombo Street.
25. Approve that these resolutions take effect when parking signage and/or road marking that evidence the restrictions described in the staff report are in place (or removed in the case of revocations).

4. Context/Background

Issue

- 4.1 Following the earthquake sequence, the streetscape of Gloucester Street, between Colombo Street and Manchester Street changed considerably. Many buildings were removed following earthquake damage.
- 4.2 As part of the transitional recovery projects, road marking changes (coloured surfacing), and temporary seating (the big green chairs etc) were installed.
- 4.3 A number of developments have now occurred with notable developments being the completion of Turanga, and the repair/rebuild of the Isaac Theatre Royal.
- 4.4 Various projects have occurred to improve the streetscape infrastructure. These have included the new footpath, kerb & channel, and parking associated with Turanga. An extended footpath area and parking was created outside the Isaac Theatre Royal. Recently, the roadway has been
- 4.5 resealed, between New Regent Street Pedestrian Mall and Manchester Street. This reseat has allowed the reinstatement of the original parking layout. Note: problems were occurring outside the Rendezvous hotel with double parking due to the lack of road marking clarity.

- 4.6 In December 2017, this committee approved the parking management outside Turanga. While this report recommends revoking all parking and stopping restrictions on this entire street block of Gloucester Street, it is intended to reinstate the same. The only exception is the suggested change to the mobility parks, to make these apply at any time, rather than the default 8am -6pm.
- 4.7 In regard to the mobility parking, it is proposed to ensure that all mobility parks have the same management. That is, 120 minute parking, that applies at any time. This has been specifically requested by the theatre management as the current 60 minutes is too short-in relation to many events at the theatre.
- 4.8 This alignment of mobility parking involves the immediately adjacent parks on the Colombo Street Library frontage, therefore this short street block is included within this report.

Strategic Alignment

- 4.9 Council's strategic priorities have been considered in formulating the recommendations in this report, however this area of work is not specifically covered by an identified priority.
- 4.10 The recommendations in this report will help to achieve the desired community outcome of a well-connected and accessible city through improved road safety.
- 4.11 The recommendations in this report are also consistent with the anticipated outcomes of the Traffic Safety & Efficiency Service Plan in the [Councils Long Term Plan \(2018 - 2028\)](#)

Decision Making Authority

- 4.12 Part 1, Clauses 7 and 8 of the Christchurch City Council Traffic and Parking Bylaw 2017 provides Council with the authority to install parking restrictions by resolution.
- 4.13 The Parking Restrictions Subcommittee has delegated authority from the Council to exercise the delegations as set out in the Register of Delegations. The list of delegations for the Committee includes the resolution of stopping restrictions within the area defined as Plan A within the delegations register.
- 4.14 The installation of any signs and/or markings associated with traffic control devices must comply with the Land Transport Rule: Traffic Control Devices 2004.

Assessment of Significance and Engagement

- 4.15 The decisions in this report are of low significance in relation to the Christchurch City Council's Significance and Engagement Policy.
- 4.16 The level of significance was determined by the low level of impact and low number of people affected by the recommended decision
- 4.17 The community engagement and consultation outlined in this report reflect the assessment

Context

- 4.18 The current parking management, particularly adjacent to the Isaac Theatre Royal is not meeting the theatre needs.
- 4.19 Creation of the same time restriction and times of application for the mobility parks will provide consistency of the parking.

5. Options Analysis

Options Considered

5.1 The following reasonably practicable options were considered and are assessed in this report:

- Option 1 - Install New and Reconfirm Parking and Stopping Restrictions (preferred option)
- Option 2 - Do Nothing

5.2 No other options were considered.

Options Descriptions

5.1 **Option One: Preferred Option:** Install new and reconfirm existing Parking and Stopping Restrictions

5.1.1 **Option Description:** Install new / reconfirm existing Parking and Stopping restrictions on both sides of Gloucester Street, between Colombo Street and Manchester Street, as detailed on Attachment A. Install new/reconfirm existing Parking and Stopping restrictions on the east side of Colombo Street between Gloucester Street and Cathedral Square, as detailed on Attachment A.

5.1.2 Option Advantages

- Meets parking needs of all land uses fronting Gloucester Street and Colombo Street.

5.1.3 Option Disadvantages

- None identified

5.2 **Option Two:** Do Nothing

5.2.1 **Option Description:** Do not change the current parking situation

5.2.2 Option Advantages

- None identified

5.2.3 Option Disadvantages

- Does not meet the needs of the Isaac Theatre Royal. Note persons are parking all day outside the theatre and denying theatre customers the opportunity for drop off /pick /short term visits (purchase of tickets).

6. Community Views and Preferences

6.1 Those sites where changes are proposed were consulted with full support – P5 parking outside the theatre, and mobility parking outside the Library. All other parking is being reconfirmed, so no consultation occurred.

6.2 The Team Leader Parking Compliance supports the preferred option.

7. Legal Implications

7.1 This specific report has not been reviewed and approved by the Legal Services Unit however the report has been written using a general approach previously approved of by the Legal Services Unit, and the recommendations are consistent with the policy and legislative framework outlined in sections 4.5-4.7.

8. Next Steps

- 8.1 Approval is required by the Parking Restrictions Subcommittee.
- 8.2 If approved, the recommendations will be implemented approximately four weeks after the contractor receives the request.

9. Options Matrix

Issue Specific Criteria			
Criteria		Option 1 - Install No Stopping Restrictions	Option 2 – Do Nothing
Financial Implications	Cost to Implement	\$400 to modify traffic signs, plus \$750 for consultation and the preparation of this report	\$750 for consultation and the preparation of this report
	Maintenance/Ongoing	Covered under the area maintenance contract and effect will be minimal to the overall asset.	\$0
	Funding Source	Traffic Operations Budget.	Existing staff budgets
	Impact on Rates	No impact	No impact
Accessibility Impacts		Parking restrictions for mobility spaces amended to better reflect use	No impact

Attachments

No.	Title	Page
A ↓	Gloucester Street - Map of Proposed Parking and Stopping Restrictions	18

Confirmation of Statutory Compliance

Compliance with Statutory Decision-making Requirements (ss 76 - 81 Local Government Act 2002).

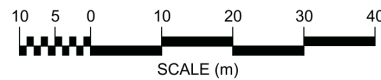
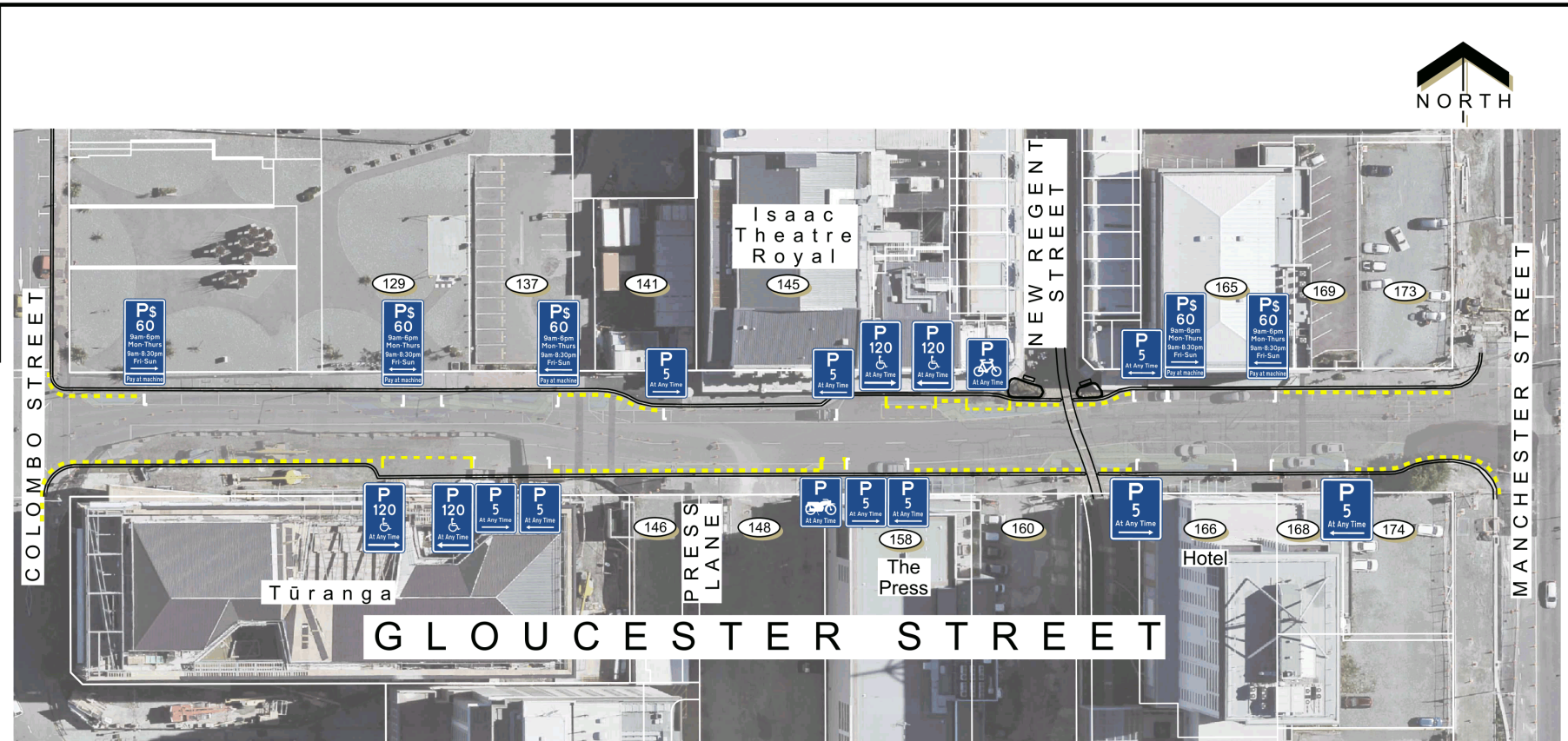
(a) This report contains:

- (i) sufficient information about all reasonably practicable options identified and assessed in terms of their advantages and disadvantages; and
- (ii) adequate consideration of the views and preferences of affected and interested persons bearing in mind any proposed or previous community engagement.

(b) The information reflects the level of significance of the matters covered by the report, as determined in accordance with the Council's significance and engagement policy.

Signatories

Author	Michael Thomson - Transport Engineer
Approved By	Ryan Rolston - Team Leader Traffic Operations Steffan Thomas - Manager Operations (Transport)



KEY	
	Proposed No Stopping

