

**Waipapa**  
**Papanui-Innes Community Board**  
**AGENDA**

---

**Notice of Meeting:**

An ordinary meeting of the Waipapa/Papanui-Innes Community Board will be held on:

**Date:** Friday 8 March 2019  
**Time:** 9am  
**Venue:** Board Room, Papanui Service Centre,  
Corner Langdons Road and Restell Street, Papanui

---

**Membership**

Chairperson	Ali Jones
Deputy Chairperson	Emma Norrish
Members	Jo Byrne
	Pauline Cotter
	Mike Davidson
	John Stringer

---

**5 March 2019**

Christine Lane  
Manager Community Governance, Papanui-Innes  
941 5213  
christine.lane@ccc.govt.nz  
[www.ccc.govt.nz](http://www.ccc.govt.nz)

Note: The reports contained within this agenda are for consideration and should not be construed as Council policy unless and until adopted. If you require further information relating to any reports, please contact the person named on the report.

**To view copies of Agendas and Minutes, visit:**

<https://www.ccc.govt.nz/the-council/meetings-agendas-and-minutes/>

# Strategic Framework

**The Council's Vision – Christchurch is a city of opportunity for all.**

Open to new ideas, new people and new ways of doing things – a city where anything is possible.

## Whiria ngā whenu o ngā papa Honoa ki te maurua tāukiuki

Bind together the strands of each mat  
And join together with the seams of respect  
and reciprocity.

The partnership with Papatipu Rūnanga  
reflects mutual understanding and respect,  
and a goal of improving the economic,  
cultural, environmental and social  
wellbeing for all.

### Overarching Principle

Partnership – Our  
people are our taonga  
– to be treasured and  
encouraged. By working  
together we can create  
a city that uses their  
skill and talent, where  
we can all participate,  
and be valued.

### Supporting Principles

Accountability	Collaboration
Affordability	Prudent Financial Management
Agility	Stewardship
Equity	Wellbeing and resilience
Innovation	Trust

## Community Outcomes

What we want to achieve together as our city evolves

### Strong communities

Strong sense of  
community  
Active participation in  
civic life  
Safe and healthy  
communities  
Celebration of our  
identity through arts,  
culture, heritage and  
sport  
Valuing the voices of  
children and young  
people

### Liveable city

Vibrant and thriving  
central city, suburban  
and rural centres  
A well connected and  
accessible city  
Sufficient supply of, and  
access to, a range of  
housing  
21st century garden city  
we are proud to live in

### Healthy environment

Healthy waterways  
High quality drinking  
water  
Unique landscapes and  
indigenous biodiversity  
are valued  
Sustainable use of  
resources

### Prosperous economy

Great place for people,  
business and investment  
An inclusive, equitable  
economy with broad-  
based prosperity for all  
A productive, adaptive  
and resilient economic  
base  
Modern and robust  
city infrastructure and  
community facilities

## Strategic Priorities

Our focus for improvement over the next three years and beyond

Enabling active citizenship and connected  
communities

Maximising opportunities to develop a vibrant,  
prosperous and sustainable 21st century city

Climate change  
leadership

Informed and proactive  
approaches to natural  
hazard risks

Increasing active, public  
and shared transport  
opportunities and use

Safe and sustainable  
water supply and  
improved waterways

## ***Mihi***



**Tēnā koutou**

**Kua hui mai nei**

**Ki tēnei whare ō tātou**

**Ki te kōrero, ki te whakarongo**

**i nga kaupapa ō to hapori**

**Nau mai, haere mai.**

**Nā reira tēnā koutou katoa**

***Greetings***

***to all who have gathered***

***within our (communal) house***

***to speak and to listen to the***

***topics/conversations of your community***

***Welcome, welcome***

***Therefore, again I greet all present***

---

Part A	Matters Requiring a Council Decision
Part B	Reports for Information
Part C	Decisions Under Delegation

---

## TABLE OF CONTENTS

C	1.	Apologies.....	5
B	2.	Declarations of Interest .....	5
C	3.	Confirmation of Previous Minutes.....	5
B	4.	Public Forum.....	5
B	5.	Deputations by Appointment.....	5
B	6.	Presentation of Petitions .....	5
B	7.	Correspondence .....	11

## STAFF REPORTS

B	8.	Waipapa/Papanui-Innes Community Board Area Report - February 2019.....	15
B	9.	Elected Members' Information Exchange.....	42

## **1. Apologies**

At the close of the agenda no apologies had been received.

## **2. Declarations of Interest**

Members are reminded of the need to be vigilant and to stand aside from decision making when a conflict arises between their role as an elected representative and any private or other external interest they might have.

## **3. Confirmation of Previous Minutes**

That the minutes of the Waipapa/Papanui-Innes Community Board meeting held on [Friday, 22 February 2019](#) be confirmed (refer page 6).

## **4. Public Forum**

A period of up to 30 minutes will be available for people to speak for up to five minutes on any issue that is not the subject of a separate hearings process.

### **4.1 Positive Youth Development Report Back – Rosa Vesty**

Rosa Vesty will attend to report back to the Board on her attendance at the Australian Volleyball Schools Cup held in Melbourne from 9 to 14 December 2018.

### **4.2 Speeds on Factory Road, Belfast – Brett Shaw**

Brett Shaw will speak to the Board about speeds on Factory Road, Belfast.

## **5. Deputations by Appointment**

There were no deputations by appointment at the time the agenda was prepared.

## **6. Presentation of Petitions**

There were no petitions received at the time the agenda was prepared.

---

**Waipapa  
Papanui-Innes Community Board  
OPEN MINUTES**

---

**Date:** Friday 22 February 2019  
**Time:** 9.03am  
**Venue:** Board Room, Papanui Service Centre,  
Corner Langdons Road and Restell Street, Papanui

---

**Present**

Chairperson	Ali Jones
Deputy Chairperson	Emma Norrish
Members	Jo Byrne
	Pauline Cotter
	Mike Davidson
	John Stringer

---

22 February 2019

Christine Lane  
Manager Community Governance, Papanui-Innes  
941 5213  
christine.lane@ccc.govt.nz  
[www.ccc.govt.nz](http://www.ccc.govt.nz)

To view copies of Agendas and Minutes, visit:  
[www.ccc.govt.nz/the-council/meetings-agendas-and-minutes/](http://www.ccc.govt.nz/the-council/meetings-agendas-and-minutes/)

- 
- Part A      **Matters Requiring a Council Decision**  
Part B      **Reports for Information**  
Part C      **Decisions Under Delegation**
- 

The agenda was dealt with in the following order.

**1. Apologies**

**Part C**

There were no apologies recorded.

**2. Declarations of Interest**

**Part B**

There were no declarations of interest recorded.

**3. Confirmation of Previous Minutes**

**Part C**

**Community Board Resolved PICB/2019/00014**

That the minutes of the Waipapa/Papanui-Innes Community Board meeting held on Friday 8 February 2019 be confirmed, subject to an amendment to the wording of Item 12.1, Elected Members' Information Exchange, to read as follows:

**"12.1 Equal Education in the East**

Member Jo Byrne advised the Board of the start of a new group called Equal Education in the East.

Staff were asked to organise a combined meeting with the Coastal-Burwood Community Board and the Ministry of Education as an opportunity to continue previous discussions and address current concerns and a second meeting involving all three entities and the public, so that the public have the opportunity to ask questions and raise issues."

Emma Norrish/Ali Jones

Carried

**4. Public Forum**

**Part B**

There were no public forum presentations.

**5. Deputations by Appointment**

**Part B**

There were no deputations by appointment.

**6. Presentation of Petitions**

**Part B**

There was no presentation of petitions.

## 7. The Palms Suburban Interchange Upgrade - Stage 1 - Shirley Road Bus Stop and Shelter Upgrades

The Board discussed the health and safety issues regarding the right hand turn from Shirley Road into the Kentucky Fried Chicken (KFC) retail outlet opposite the bus stop and shelter and felt that a comparison between the current mitigation proposals and removal of the right hand turn into KFC would aid the Board in making a decision.

### Staff Recommendations

That the Papanui-Innes Community Board:

1. Approve the scheme designs for The Palms Public Transport Facilities – Shirley Road Bus Stop, as detailed in **Attachment A** as attached to this Agenda.
2. Make the following resolutions relying on its powers under the Christchurch City Council Traffic and Parking Bylaw 2017 and Part 21 of the Local Government Act 1974.
3. For the purposes of the following resolutions: (1) An intersection of roadways is defined by the position of kerbs on each intersecting roadway ; and (2) The resolution is to take effect from the commencement of physical road works associated with the project as detailed in this report.
4. Approve that all parking and stopping restrictions on south side of Shirley Road commencing at a point 71 metres west of its intersection with North Parade and extending in a westerly direction for a distance of 31 metres be revoked.
5. Approve that a bus stop be created on the south side of Shirley Road, commencing at a point 71 metres west of its intersection with North Parade, and extending in a westerly direction for a distance of 31 metres.

### Community Board Decided PICB/2019/00015

#### Part B

The Waipapa/Papanui-Innes Community Board decided to lay the report on the table and to request that staff:

1. Advise the Board on the implications of removing the right hand turn into KFC as far as traffic flow and 'pinch points' are concerned and provide a comparison with the proposed mitigation measures.
2. Investigate leasing land behind the proposed bus shelter, as far west as the Totara tree, from the Ministry of Education, to accommodate the suggestion of moving the bus shelter back by 500 millimetres.
3. Advise the Board around the process regarding changes to the proposal as per number 1. above and whether there is a need to re consult.

Pauline Cotter/Ali Jones

Carried



## 8. Application to Waipapa/Papanui-Innes Community Board 2018-19 Discretionary Response Fund - Richmond Residents' and Business Association

The Board considered the additional information details provided by the Richmond Residents' and Business Association following the Board's request at its meeting of 8 February 2019.

### Staff Recommendation

The Waipapa/Papanui-Innes Community Board noted that the staff recommendation was changed to \$1,500 because of the further information provided by the Association in response to the Board's request.

### Community Board Resolved PICB/2019/00016

#### Part C

That based on the shared split between the Papanui-Innes and Linwood-Central-Heathcote Community Boards of 40 per cent and 60 per cent, the Waipapa/Papanui-Innes Board resolved to:

1. Approve a grant of \$600 from its 2018-19 Discretionary Response Fund to the Richmond Residents' and Business Association towards administration costs.

**Note:** The Waipapa/Papanui-Innes Community Board noted that staff will work closely with the organisation to identify alternative sources of Community Board funding in the future.

John Stringer/Mike Davidson

Carried

Emma Norrish requested that her vote against the decision be recorded.

## 9. Application to Papanui-Innes Community Board 2018-19 Positive Youth Development Fund - Owen Bloome Dabkowski

**Community Board Resolved PICB/2019/00017 (Original Staff Recommendation adopted without change)**

#### Part C

That the Waipapa/Papanui-Innes Community Board resolved to:

1. Approve a grant of \$200 from its 2018-19 Positive Youth Development Fund to Owen Bloome Dabkowski towards the costs of representing Canterbury at the U16 National Baseball tournament in Auckland.

Pauline Cotter/Jo Byrne

Carried

## 10. Waipapa/Papanui-Innes Community Board Area Report - February 2019

Community Board Resolved PICB/2019/00018 (Original Staff Recommendation adopted without change)

### Part B

That the Waipapa/Papanui-Innes Community Board decided to:

1. Receive the Waipapa/Papanui-Innes Community Board Area Report for February 2019.

Jo Byrne/Mike Davidson

Carried

## 11. Elected Members' Information Exchange

### Part B

Board members exchanged information on matters of interest.

#### 11.1 Papanui Domain and St Albans Park Rubbish Bins

The Board was advised of an ongoing problem with a constantly overflowing rubbish bin near the playground in the Papanui Domain and again with a rubbish bin near the children's playground in St Albans Park.

The Waipapa/Papanui-Innes Community Board requested that:

1. Staff follow up on the cycle of emptying the Papanui Domain and St Albans Park playground bins with the Parks maintenance contractor.
2. Advise on options, including a request for an extra bin to be provided in the immediate vicinity in each case and/or smart bins.

Pauline Cotter left the meeting at 10.09 a.m. and returned at 10.11 a.m.

#### 11.2 Northfield Avenue - Public Realm Street Tree

The Board expressed concern and requested that the Board member involved ask the residents for the details (dates, approximate times, etc.) of calls made to the Customer Services Call Centre regarding this matter to ensure that systems are working effectively.

Meeting concluded at 10.21am

CONFIRMED THIS 8<sup>th</sup> DAY OF MARCH 2019

ALI JONES  
CHAIRPERSON

## 7. Correspondence

Reference: 19/227611

Presenter(s):

### 1. Purpose of Report

Correspondence has been received from:

Name	Subject
Christchurch City Council - Property Consultant and Asset Protection Engineer	Portion of unmade road adjacent to 110 Sawyers Arms Road

### 2. Staff Recommendations

That the Papanui-Innes Community Board:

1. Receive the information in the correspondence report dated 08 March 2019.

### Attachments

No.	Title	Page
A <a href="#">↓</a>	Internal or External Memos Portion of unmade road adjacent to 110 Sawyers Arms Road Memorandum	12

Memos  
31 December 2019

Christchurch  
City Council 

### Memorandum

**Date:** 15 February 2019  
**From:** Tom Lennon, Property Consultant – James Ting, Asset Protection Engineer  
**To:** Papanui – Innes Community Board  
**Cc:** Elizabeth Hovell, Community Board Advisor - Christine Lane, Community Governance Manager – Papanui-Innes  
**Subject:** Portion of unmade road adjacent to 110 Sawyers Arms Road  
**Reference:** 19/162720

## 1. Purpose of this Memo

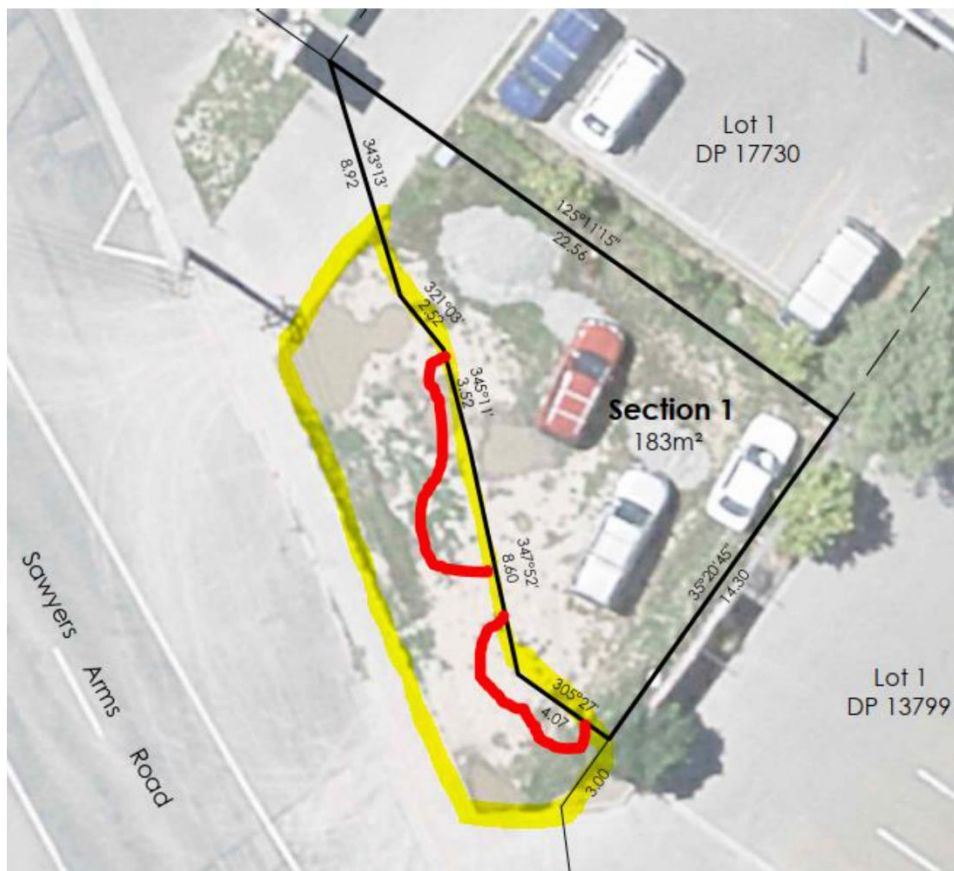
- 1.1 To update the Community Board on the current status of the unmade portion of road adjacent to 110 Sawyers Arms Road.

## 2. Update

- 2.1 The sequence of events to date has been as follows;
  - 2.1.1 A road stopping application for the portion of unmade road in question was submitted on behalf of Ideal Electrical in mid-2018.
  - 2.1.2 The applicant was contacted by Council requesting additional information.
  - 2.1.3 The additional information was submitted to Council in early November 2018.
  - 2.1.4 Following receipt of the additional information a valuation report for the portion of land to be purchased by Ideal Electrical was commissioned by the Council. The valuation report was received on 21 November and a copy of the valuation was provided to the applicant for consideration.
  - 2.1.5 The applicant emailed Council on 18 December 2018 requesting a review of the valuation in view of additional information that became available at the time.
  - 2.1.6 The valuation was revised by the registered valuer who provided the valuation and the applicant was subsequently informed in an email on 8 January that the additional information was found to have no impact on the current market valuation of the land to be purchased.
  - 2.1.7 The applicant confirmed on 21 January that they accept the recommended value and that they are willing to proceed.
  - 2.1.8 An Agreement for Sale and Purchase is currently being prepared for approval and execution by the parties.
- 2.2 The next step is for the Community Board to receive a report that will seek resolutions to progress the road stopping. It is anticipated that this will be presented to the meeting on 12 April 2019.
- 2.3 In the meantime, area labelled 'Section 1' in the picture below will remain untouched. The low spots in the adjacent area circled in yellow will be filled with soil by end of February 2019 and hydro-seeded to grass the area. Upon completion of the road stopping, the same area will be landscaped with plantings (marked as red lines in below picture) along the new boundary line to discourage any vehicles from parking on the grassed area.

Memos  
31 December 2019

Christchurch  
City Council



### 3. Conclusion

- 3.1 Short term solutions to the ongoing issues are currently being actioned whilst the road stopping and subsequent sale of the unmade portion of road to the adjoining owner is being processed.

### Attachments

There are no attachments to this report.

### Signatories

<b>Authors</b>	Tom Lennon - Property Consultant James Ting - Asset Protection Engineer
<b>Approved By</b>	Angus Smith - Manager Property Consultancy Pana Togiasso - Team Leader Road Amenity and Asset Protection



## 8. Waipapa/Papanui-Innes Community Board Area Report - February 2019

Reference: 19/168286

Presenter(s): Elizabeth Hovell – Community Board Adviser

### 1. Purpose of Report

This report provides information on initiatives and issues current within the Community Board area, to provide the Board with a strategic overview and inform sound decision making.

### 2. Staff Recommendations

[That the Waipapa/Papanui-Innes Community Board:](#)

1. [Receive the Waipapa/Papanui-Innes Community Board Area Report for February 2019.](#)

### 3. Community Board Activities and Forward Planning

#### 3.1 Memos/Information/Advice to the Board

##### 3.1.1 Information sent to the Board:

- CNC Alliance: Waimakariri Bridge Contraflow and Grimseys/QEII Update (*circulated 21 Feb 2019*)

#### 3.2 Board area Consultations/Engagement/Submission opportunities

- ##### 3.2.1
- The Christchurch City Council 2019-20 Annual Plan submissions opened Friday 1 March 2019. A seminar with the Board will follow the 8<sup>th</sup> March meeting to consider possible content for the Papanui-Innes Community Board's Annual Plan Submission.

#### 3.3 Board Reporting

- ##### 3.3.1
- The Board are asked to consider topics for inclusion in Newslines, the newsletter and the report to the Council.

### 4. Significant Council Projects in the Board Area

#### 4.1 Other partnerships with the community and organisations

##### 4.1.1 Inter-Agency Community Network Meetings 2019

The Papanui Inter-Agency meeting was held on Tuesday 19 February in the Papanui Board Room and the Shirley Inter-Agency on Thursday 21 February at the MacFarlane Park Centre. A change of format has been introduced to the meetings following the results of feedback from last year's survey.

There were approximately 20 people at both meetings discussing issues, celebrating successes and networking.

## 4.2 Community Facilities (updates and future plans)

### 4.2.1 10 Shirley Road

At the public forum of the 9 November 2018 Papanui-Innes Community Board meeting, a resident from the Richmond area spoke to the Community Board regarding concerns over the condition of the 10 Shirley Road site. The resident felt the site was overgrown and untidy and that there was a lack of seating in the area.

Staff forwarded a request to the Parks Team for the contractor to tidy up the area and this was carried out prior to Christmas. Staff were also asked to investigate seating options for the area.

There are no surplus picnic table units available for use or relocation so the Parks Team have provided the following options for a new unit for the Board's consideration and possible funding via their Discretionary Response Fund as Parks and Reserves funding is fully allocated for this financial year.

Option 1 - Portland Picnic Set		Option 2 – Sandringham Picnic Set	
			
Item	Cost	Item	Cost
Portland	2,095	Sandringham	2,895
Pad and Installation	(approx.) 1,500	Pad and Installation	(approx.) 1,500
<b>Total Cost</b>	<b>\$3,595</b>	<b>Total Cost</b>	<b>\$4,395</b>

### Option 3



A further suggestion was a multi-purpose table such as the concrete table-tennis table in this picture with a couple of benches either side for seating.

Parks staff are in the process of obtaining a quote for this set up to compare with the picnic table sets above.



4.3 February – Infrastructure projects underway

Project:	Westminster Park field upgrades
Project Phase:	On Hold / Programme Planning (concept) Surface and drainage upgrade to improve the quality and usage of the front field in the park. Currently on hold.
Project:	St Albans Skate Park Extension
Project Phase:	Initiate Project is in the early stages of investigation and design with construction scheduled for FY20.
Project:	St Albans Park Sport Turf Renewal
Project Phase:	Execute / Construction The renewal and upgrading of the turf surface to mitigate the frequent flooding of the park. Increase the available time the park can be used for the allocated sports, particularly in winter. All the base construction, drainage, irrigation and sand slitting works are completed. Grass was sown in early December 2018 and the turf is now in the grow-in and establishment phase with handover scheduled for April 2019 subject to acceptable turf growth and establishment.
Project:	St Albans Park - Pavilion/Toilets
Project Phase:	Execute / Defects Liability The project is the replacement changing rooms/toilet facility for the previous earthquake damaged pavilion. The construction is completed with the Public toilets now open. The balance of the facility will be in use once the fields are completed.
Project:	St Albans Community Centre
Project Phase:	Execute / Investigation and Scheme Design The Project is currently in the Design and Consenting phase.
Project:	Sabina Playground - Play Space Renewal
Project Phase:	Initiate Project still in the initial phase - no funding until FY20
Project:	Papanui Domain Playground Renewal
Project Phase:	Execute / Defects Liability Construction completed.
Project:	Paddington Playground Renewal and Basketball Hoop
Project Phase:	Initiate / Investigation and Scheme Design Staff are currently investigating options to renew the Play Space at Paddington Reserve. A Community Board seminar to present the proposed plan was delivered on 22 February 2019 prior to consultation.
Project:	Belfast Cemetery Extension
Project Phase:	Execute / Detailed Design The project is for the development of the extension to Belfast Cemetery. Including a comprehensive consent for all works associated with the development.

The works included within the consent are all the new roads, paths, lawns, drainage, landscape, monumental beams and alterations to the toilet water and sewer system.

Approximately 500 new plots have been established in the extension works to date.

## 5. Community Issues, Events and Projects in the Board Area

### Community Projects

#### 5.1 Shirley Community Reserve Edible Park – Update February 2019

The edible garden beds located outside Shirley Playcentre at the Shirley Community Reserve continue to be maintained and used. While the original apple trees have not done very well, herbs and berries are thriving (cranberries, loganberries, boysenberries and blueberries) and a second feijoa and a cape gooseberry were added for this summer.

There is a small core team of residents involved, along with the Playcentre families who enjoy harvesting the fruit. A Facebook group is the main means of communication amongst interested locals. It is hard to know how many locals or passers-by pick food, but we use social media and the school newsletter to try to raise awareness that the edibles are there.

At the inception of the Shirley Community Reserve Edible Park we were keen to maximise public accessibility to the edibles by planting them facing the playground, near the bus stop and along the stream path for greater public awareness and access, but this was not possible due to the uncertainty over possible uses of the site and concerns for stream and grounds maintenance. Hopefully opportunities to incorporate edible plantings can still be considered in the ongoing discussions for the 10 Shirley Road site's future.

*Playcentre whānau with fejoas harvested from the edible park (2018):*



*2018/19 summer growth in the edible park:*



### Events Report Back

#### 5.2 Potential New Community Garden - Redwood

Local staff and the Parks Advisor met with a local resident in Willowview Drive (opposite the Styx River Esplanade Reserve in Redwood) around the possibility of a community garden at the end of the street.

An onsite inspection in conjunction with the resident and the Parks Team on Thursday 28 February proved positive with the preferred site which is sheltered and has existing food trees such as hazelnut, edible chestnut and almond trees already established in the area.

Currently the local resident is to gain permission for a direct water supply from a neighbouring property and garner local inter-generational support for the concept.

Should the initial neighbourhood liaison be successful, the Parks Advisor will access planter boxes, lining, mulch and dirt to get the project underway. A two-year licence to access will also be provided.

Staff will continue to update the Board on progress around this community garden development.

### 5.3 Neighbourhood Links Centre Opening

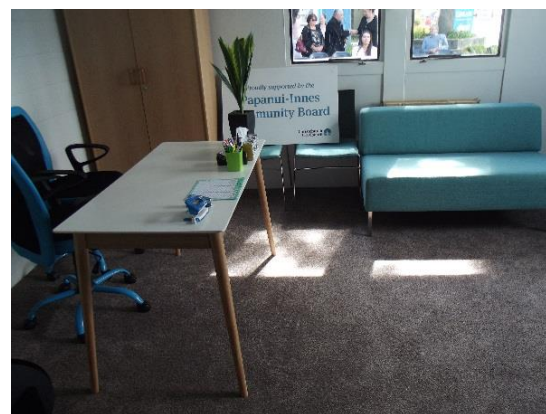
The Neighbourhood Links Centre opening held on Wednesday 27 February 2019 saw the official transformation of the old Redwood Plunket Rooms into a new community-led hub.

The Papanui-Innes Community Board is delighted to support the new initiative and Councillor Mike Davidson (Master of Ceremonies) spoke about the role of the Community Board and Council in funding the repairs to the building. The Deputy Chair, Emma Norrish, delivered a short speech about the history of the building and the number of individuals and non-government organisations (NGOs) that have been involved in the Northcote Project which led to the activation of the building.



Joss Buttriss, the original Northcote Project coordinator, spoke about the development of the delivery of community focused responses within the Northcote Redwood area and introduced the two local volunteers, Angie Durey and Charlotte Clark, who will now work from the new centre and continue to build on the work already well started.

Approximately 30 guests witnessed Te Ora Hou's kaumatua, Mr H, formally bless the building, the reading of a blessing contributed by the Reverend Joanne Latham from St Silas Church and the cutting of the cake by Mike, Emma, Joss, Angie and Charlotte (*above right*).





The Papanui-Innes Community Board expressed their thanks to Geoff Edwards of Resene Paints NZ and Peter Dalman of Finesse Painting and Landscaping for their kind donations of products and time to help refurbish the building.

#### 5.4 Children's Day 2019

Once again the day provided wonderful weather for the city-wide Children's Day celebration. This is a collaborative effort on the part of the Community Recreation staff and multiple helpers and volunteers. The amount of planning and preparation that goes into the delivery of this day is huge and all credit to the staff who are out there making this happen with integrity and passion.



The event was well-supported by the public and families thoroughly appreciated all the fun activities available.

## 6. Parks, Sports and Recreation Update (bi-monthly)

6.1 The next bi-monthly report will be presented in April 2019.

## 7. Community Board Funding Update

### 7.1 Positive Youth Development and Discretionary Response Funds Update

The 2018/19 financial year's Positive Youth Development and Discretionary Response Funds Balance Sheet update is attached (refer **Attachment A** to this report).

### 7.2 Discretionary Response Fund 2017/18 – End of Project Summary

An End of Project Summary for the Discretionary Response Fund 2017/18 is attached for the Board's information (refer **Attachment B** to this report).

## Attachments

No.	Title	Page
A <a href="#">↓</a>	DRF and PYDF Balance Sheet as at 22 February 2019	22
B <a href="#">↓</a>	Discretionary Response Fund 2017/18 End of Project Summary	23

## Signatories

<b>Authors</b>	Lyssa Aves - Governance Support Officer Trevor Cattermole - Community Development Advisor Stacey Holbrough - Community Development Advisor Elizabeth Hovell - Community Board Advisor Christine Lane - Manager Community Governance, Papanui-Innes Helen Miles - Community Recreation Advisor Sharon Munro - Community Support Officer
<b>Approved By</b>	Christine Lane - Manager Community Governance, Papanui-Innes Matthew McLintock - Manager Community Governance Team John Filsell - Head of Community Support, Governance and Partnerships

Papanui-Innes Community Board  
2018/19 Discretionary Response and Positive Youth Development Funds Allocations

Papanui-Innes Discretionary Response Fund Project/Service/Description/Group	Allocation 2018/19	Board Approval
Balance of PYDF/DRF Carried Forward from 2017/18 Funding Year	\$ 18,846	
Discretionary Response Fund Budget Allocation 2018/19 (unallocated from SCF)	\$ 73,112	
Total	\$ 91,958	
Opening Amount Transferred to Positive Youth Development Fund 2018/19	\$ 7,000	
Balance for Allocation in Discretionary Response Fund	\$ 84,958	
<b>POSITIVE YOUTH DEVELOPMENT FUND (PYDF) - Opening Transfer from DRF</b>	<b>\$ 7,000</b>	
Taiko Torepe-Ormsby (2018 State Teams Age Short Course Swimming Championships, Canberra, Australia 2-5 Oct 18)	\$ 400	14-Sep
Anna Dabkowski (2018 AIMS Games Championship, Tauranga)	\$ 100	14-Sep
Jorja McCaughan (2018 NZCAF Shools Aerobic National Championships, Wellington)	\$ 150	14-Sep
Jennifer Trieu (New Zealand Rhythmic Gymnastics Nationals, Tauranga, 1-6 Oct 2018)	\$ 200	28-Sep
Kate Davies (competitions/training camps for Athletics New Zealand Jumps Future Squad Nov 18-Feb 19)	\$ 250	9-Nov
Anna Lee School of Dance for Alexandra Swan (She Shines On Dance Tour, New York and Orlando, USA Apr 19)	\$ 450	9-Nov
Rosa Vesty (Australian Volleyball Schools Cup, Melbourne 9-14 Dec 18)	\$ 450	23-Nov
Team Lhotshampa: Gurung, Magar and Bhattarai (Tenzing Hillary Cub Inter-Nepalese Football Tournament, Auckland 2-3 Feb 19)	\$ 210	25-Jan
Owen Dabkowski (U16 National Baseball Tournament, Auckland)	\$ 200	22-Feb
<b>POSITIVE YOUTH DEVELOPMENT FUND Balance</b>	<b>\$ 4,590</b>	
<b>PYDF granted to date</b>	<b>\$ 2,410</b>	
<b>DISCRETIONARY RESPONSE FUND (DRF) - Initial Amount</b>	<b>\$ 84,958</b>	
Villa Maria College for Hannah Warner (NZ Choral Federation Big Sing Competition, Wellington 30 Aug-1 Sep 18)	\$ 125	10-Aug
Villa Maria College for Laura Warner (NZ Choral Federation Big Sing Competition, Wellington 30 Aug-1 Sep 18)	\$ 125	10-Aug
Belfast Community Network (Northwest Collective)	\$ 3,000	24-Aug
Canterbury Cook Islands Sports Assn Inc (Rent costs)	\$ 4,000	24-Aug
Papanui Softball Club (Replacement of equipment)	\$ 1,000	24-Aug
St Albans Residents Association - SARA (Towards Rental of Premises)	\$ 7,500	14-Sep
Neighbourhood Week 2018 (costs of neighbourhood/community celebrations)	\$ 3,000	14-Sep
Papanui-Innes Community Board's Edible Garden Awards 2019	\$ 3,000	28-Sep
Papanui-Innes Community Board's Youth Recreation Project	\$ 7,000	28-Sep
Papanui-Innes Community Board's Community Pride Garden Awards 2019	\$ 3,000	28-Sep
Papanui-Innes Community Board's Community Service Awards 2019	\$ 3,500	28-Sep
St Albans Residents Association - SARA (Edgware Village Beautification Programme)	\$ 7,000	9-Nov
Shirley Community Trust (Summer holiday programme)	\$ 4,000	9-Nov
Richmond Residents' and Business Association (Establishment and running costs) Laid on Table 7/12/18, 8/2/19 & 22/2/19	\$ -	7-Dec
Delta Community Support Trust (Community Advocacy)	\$ 3,000	7-Dec
Community Focus Trust (Hosting St Albans Community Day and Park celebration) Laid on Table 9/11 & 23/11 Declined	\$ -	7-Dec
The Santa Claus Workshop Charitable Trust (towards purchase of a scroll saw)	\$ 1,399	25-Jan
Papanui-Innes Community Board (Celebrate St Albans Park Opening - 31 Mar 19)	\$ 2,500	8-Feb
Richmond Residents' and Business Association (Establishment and running costs) Laid on Table 7/12/18, 8/2/19 & 22/2/19	\$ 600	22-Feb
<b>DISCRETIONARY RESPONSE FUND Balance</b>	<b>\$ 31,209</b>	
<b>DRF granted to date</b>	<b>\$ 53,749</b>	

HPRM: 18/919399

Opened 1-Jul-18  
Updated 22-Feb-19

## PAPANUI-INNES END OF PROJECT SUMMARY DRF 2017-18

In respect of the Papanui-Innes Discretionary Response Fund 2017-18 among the applications received, three were received which would have normally gone to the 2017/18 Positive Youth Development Fund. These applications were received before the 2017/18 Positive Youth Development Fund was established on the 15<sup>th</sup> of September 2017 and therefore included within the Papanui-Innes Discretionary Response Fund 2017-18.

Of the 18 successful applications, seven were Board bids, namely, Engagement with the Community (\$500), Papanui Bush Bridgestone Reserve Planting Programme Phase 2 (\$7,000), Papanui-Innes Community Pride Garden Awards (\$3,000), Papanui-Innes Edible Garden Awards (\$4,000), Papanui-Innes Neighbourhood week 2017-18 (\$3,000), Youth Recreation Project (\$6,000) and the above mentioned, Establishment of the 2017/18 Positive Youth Development Fund (\$10,000)

### 2017/18 Papanui-Innes, Discretionary Response Fund budget, requests and grants;

**Budgeted; \$65,526**

**Requested amount; \$128,608 (196% of Budget)**

**Recommended amount; \$51,801**

**Granted amount \$51,801; (79% of Budgeted amount)**

**Funding request Applications; 18**

**Successful Applications; 18**

Note; the unspent balance of the 2017/18 Discretionary Response Fund was transferred into the 2018/19 Discretionary Response Fund.

A project summary of each applicant to the Fund follows:

## PAPANUI-INNES END OF PROJECT SUMMARY DRF 2017-18

Project Details	Project Outcomes
<p>00057028</p> <p><b>Organisational Name</b> Brett, Cate Mariel Fay</p> <p><b>Name of Project</b> National Choral Federation Competition</p> <p><b>Requested amount</b> \$513 For expenses to attend the National choir competition in Auckland from 23rd August 2017 to 27 August 2017.</p> <p><b>Granted amount</b> \$276</p> <p><b>Spent on</b> As granted</p>	<p><b>How Much Did They Do?</b> This project supported Cate Brett to attend and to compete in the New Zealand Choral Federation, National choir competition in Auckland from 23rd August 2017 to 27 August 2017.</p> <p><b>Who Is Better Off As A Result?</b> This opportunity provided an excellent opportunity for Cate to experience a national completion, this experience benefited her as she progresses in her academic and employment goals.  The recipient stated that this experience would help her with the skills necessary for teaching younger Choirs in the future and improve her confidence in singing at events and thanked the Board for its contribution which supported her attendance.</p> <p><b>Staff Comment</b> <b>Decision Date 11/08/2017;</b> Cate Brett reported back to the Papanui – Innes Community Board at the 13 Oct 2017 meeting. <b>Note;</b> This application was received for the 2017/18 Papanui-Innes Youth Development Fund before it was established on the 15<sup>th</sup> of September 2017, therefore the application was brought to, and included in the applications to the 2017/18 S Papanui-Innes Discretionary Response Fund.</p>



## PAPANUI-INNES END OF PROJECT SUMMARY DRF 2017-18

Project Details	Project Outcomes
<p>00056324</p> <p><b>Organisational Name</b> White, Serena Holly</p> <p><b>Name of Project</b> Trip to Japan Visiting Schools</p> <p><b>Requested amount</b> \$3,510 For The University of Canterbury trip to Japan from 28 September 2017 to 14 October 2017. For Serena White</p> <p><b>Granted amount</b> \$250</p> <p><b>Spent on</b> As granted</p>	<p><b>How Much Did They Do?</b> A group of 14 students from the University of Canterbury are going over to Japan to spend two weeks visiting early childhood, primary, secondary and university schools We are going over to experience a different culture and to see how the education system is different to NZ.</p> <p><b>Who Is Better Off As A Result?</b> Serena stated that as she is in the last year of studying a primary teaching degree she believe this trip will give her experience in working with international students, and new ideas to bring to the classroom and that the trip will provide her with more knowledge and experience which will help her to become a better teacher.</p> <p><b>Staff Comment</b> <b>Decision Date 11/08/2017;</b> Serena White reported back to the Papanui-Innes Community Board on 24 Nov 2017</p> <p><b>Note;</b> This application was received for the 2017/18 Papanui-Innes Youth Development Fund before it was established on the 15<sup>th</sup> of September 2017, therefore the application was brought to, and included in the applications to the 2017/18 S Papanui-Innes Discretionary Response Fund.</p>

## PAPANUI-INNES END OF PROJECT SUMMARY DRF 2017-18

Project Details	Project Outcomes
<p>00057135 <b>Organisational Name</b> St Thomas of Canterbury College</p> <p><b><u>Name of Project</u></b> YDF Aims Games</p> <p><b><u>Requested amount</u></b> \$1,215 For the cost of Dylan Barbour-Ryan participating in the Anchor AIMS Games in Tauranga from 10 to 15 September 2017 as part of the St Thomas of Canterbury College team.</p> <p><b><u>Granted amount</u></b> \$125</p> <p><b><u>Spent on</u></b> As granted</p>	<p><b>How Much Did They Do?</b></p> <p>The team of (year 7 and 8 boys) qualified for this national football tournament after being successful through a hard qualifying process</p>
	<p><b>Who Is Better Off As A Result?</b></p> <p>Dylan Barbour-Ryan reported that this team experience would enhance his development as a player and a person.</p>
	<p><b>Staff Comment</b></p> <p><b>Decision Date; 25/08/2017;</b></p> <p>Dylan Barbour-Ryan (St Thomas of Canterbury College) reported back to the Papanui-Innes Community Board on 30 October 2017</p> <p><b>Note;</b> This application was received for the 2017/18 Papanui-Innes Youth Development Fund before it was established on the 15<sup>th</sup> of September 2017, therefore the application was brought to, and included in the applications to the 2017/18 Papanui-Innes Discretionary Response Fund.</p>

## PAPANUI-INNES END OF PROJECT SUMMARY DRF 2017-18

Project Details	Project Outcomes
<p>00057207</p> <p><b>Organisational Name</b> Papanui-Innes Community Board</p> <p><b>Name of Project</b> Papanui-Innes Neighbourhood Week 2017/18</p> <p><b>Requested amount</b> <b>\$4,000</b> For Marketing costs and reimbursement towards community neighbourhood events</p> <p><b>Granted amount</b> <b>\$3,000</b></p> <p><b>Spent on</b> <b>\$2003.66</b> Reimbursement to applicants who held events.</p>	<p><b>How Much Did They Do?</b></p> <p>Neighbourhood Week is a week dedicated to getting to know the people who live close to you. It's about bringing people together, whether a few households or a large neighbourhood gathering. Neighbourhood Week 2017 was held between 28 October 2017 and March 2018. Those who participate in Neighbourhood Week feel a sense of community with their immediate neighbours, and they feel safer in their homes and with their children playing together in the street.</p> <p>Expenditure will be for the granted subsidies towards community neighbourhood events and paid on receipts being received.</p> <p><b>Who Is Better Off As A Result?</b></p> <p>32 Events were funded, 25 events were reimbursed, three events were cancelled, one event was held but reimbursement was not claimed and three applicants did not forward information. The events attracted 1,678 attendees.</p> <p>Feed back included these quotes</p> <p>"Getting the knowledge of the community trust in what we do and areas of services we offer the community, also able to create a community event in our area where families can connect and enjoy free activities".</p> <p>"Neighbours meeting new neighbours. Connecting neighbours together".</p> <p>"Know my neighbours. I feel the older people can call on us younger ones if they need help. Feel more secure in our environment".</p> <p>"Meeting new neighbours, socialising and catching up with everyone else. Issuing new updated phone lists".</p> <p><b>Staff Comment</b></p> <p><b>Decision Date; 15/09/2017;</b></p> <p>Monitoring report received, Reimbursement Budget Tracking file attached, Applications received and decisions approved file attached, and feedback from returned evaluation forms attached.</p> <p>32 Events were held and the balance of \$996.34 unspent, was placed back in the Papanui-Innes 2017/18 DRF.</p>

## PAPANUI-INNES END OF PROJECT SUMMARY DRF 2017-18

Project Details	Project Outcomes
<p>00057194</p> <p><b>Organisational Name</b> Canterbury Cook Islands Sports Association Incorporation</p> <p><b>Name of Project</b> Rent/Venue Hire</p> <p><b>Requested amount</b> \$5,000 For Rent costs</p> <p><b>Granted amount</b> \$4,000 For rent costs</p> <p><b>Spent on</b> As granted</p>	<p><b>How Much Did They Do?</b> Canterbury Cook Island Sports Association Incorporation has been operating for over 18 years organising and running sporting and cultural activities for the Cook Island community. Its objectives are to provide and promote recreational, cultural and sport activities.</p> <p><b>Who Is Better Off As A Result?</b> The weekly activities nights encouraged, promoted and supported the young and old people to achieve the highest goals within their individual ability. The number of people involved per night was approximately 30. Both young and old were involved in the weekly cultural, language, arts, life skills, programmes and sporting events for the Cook Island community.</p> <p><b>Staff Comment</b> <b>Decision date 15/09/2017;</b> Monitoring Report received. This project takes a community recreation approach targeting grass roots participation and is increasing the capacity of the group to deliver to its members.  The night involves language, singing, dancing, sport, drumming and social activities. The Group continues to hold its activities at the Shirley Rugby Leagues Club Rooms and the Rugby Leagues Club confirms rental costs have been paid.</p>

## PAPANUI-INNES END OF PROJECT SUMMARY DRF 2017-18

Project Details	Project Outcomes
<p>00057234</p> <p><b>Organisational Name</b> Papanui-Innes Community Board</p> <p><b>Name of Project</b> Establishment of the 2017/18 Papanui-Innes YDF</p> <p><b>Requested amount</b> \$10,000 For Establishment of the 2017/18 Papanui-Innes YDF</p> <p><b>Granted amount</b> \$10,000</p> <p><b>Spent on</b> As granted</p>	<p><b>How Much Did They Do?</b> The establishment of the 2017/18 Papanui-Innes Youth Development Fund provided opportunities for individuals, groups and teams to gain financial support to further their chosen fields either nationally or internationally. 26 Applications were received for both individuals, groups and teams.</p> <p><b>Who Is Better Off As A Result?</b> 25 Applications were successful and granted funds from the Community Board and were supported to travel to events as diverse as The World Future Problem Solving Championships in America, The Korfball under 17 World Championships in the Netherlands, The World Canoe Racing Championships in Bulgaria, The HipHop Unite World Championships in Amsterdam, The N.Z. Shakespeare Schools Production, and 29 Students to attend the PYDT Youth Leadership Camp to name a few. The successful applicants were able to gain support towards International and National costs of attending events while representing their schools, Clubs, Provincial or National teams. All successful applicants reported back to the Board and spoke of the impact the experience had on them as individuals and that the support of the Board contributed to their personal development.</p> <p><b>Staff Comment</b> <b>Decision Date; 15/09/2017;</b> On the 15<sup>th</sup> of September 2017 the Papanui-Innes Community Board resolved to: 1. Review the current criteria and approve the establishment of the Papanui-Innes 2017/18 Positive Youth Development Fund. 2. Approve the transfer of \$10,000 from the 2017/18 Papanui-Innes Discretionary Response Fund to the 2017/18 Papanui-Innes Positive Youth Development Fund. <b>Note</b> Three applications were received for the 2017/18 Papanui-Innes Youth Development Fund before it was established on the 15<sup>th</sup> of September 2017, these applications were brought to, and included in the applications to the 2017/18 S Papanui-Innes Discretionary Response Fund. Those three applications are included separately in this report.</p>

## PAPANUI-INNES END OF PROJECT SUMMARY DRF 2017-18

Project Details	Project Outcomes
<p>00057151</p> <p><b>Organisational Name</b> Papanui Softball Club</p> <p><b>Name of Project</b> Replacement of team gear bags</p> <p><b>Requested amount</b> \$4,500 For Replacement of gear bags.</p> <p><b>Granted amount</b> \$500</p> <p><b>Spent on</b> As granted</p>	<p><b>How Much Did They Do?</b></p> <p>The Papanui softball club has been operating since 1947. The main goals of the club are to provide the activity of softball to as many children, youth and adults in the Papanui area.</p> <p><b>Who Is Better Off As A Result?</b></p> <p>The club was able to replace old team gear bags, which had no wheels so had to be carried over the shoulder, with new wheeled gear bags. These get very heavy due to having to hold bases, balls, bats, catchers gear, and coaches having to carry them was a recipe for strain and injury. The new bags help alleviate this</p> <p><b>Staff Comment</b></p> <p><b>Decision Date 15/09/2017;</b></p> <p>Monitoring report received. The Board funding contributes to the clubs community recreation approach targeting grass roots participation and is increasing the capacity of the club to deliver quality safe sport for the children and youth in the Papanui area.</p> <p>The club reports that the club this year has 14 Junior teams ranging in age from 5 to 19 years. The club has a silver club mark and organisation volunteer hours of 2,000</p>

## PAPANUI-INNES END OF PROJECT SUMMARY DRF 2017-18

Project Details	Project Outcomes
<p><b>00057203</b></p> <p><b>Organisational Name</b> Papanui Handiscope Centre</p> <p><b>Name of Project</b> Support of our Volunteers</p> <p><b>Requested amount</b> \$1,020 For</p> <p><b>Granted amount</b> \$400 Towards volunteer recognition.</p> <p><b>Spent on</b> As granted</p>	<p><b>How Much Did They Do?</b></p> <p>Papanui Handiscope Centre has been working in the Shirley/Papanui community for 46 years. They provide weekly activities to members 42 weeks of the year. The Centre provides transport to the programme, morning tea and the activities for those in attendance. The activities generally involve craftwork, recreation and companionship for all persons that have a disability through an accident or an illness.</p> <p><b>Who Is Better Off As A Result?</b></p> <p>The organisation provides two events celebrating its volunteers</p> <p>Without the 51 Volunteers the program would not function The volunteers help with transport, handcrafts, food preparation and general duties. The ratio at Handiscope is two to one.</p> <p>Volunteers are recognised and valued.</p> <p><b>Staff Comment</b></p> <p><b>Decision Date 15/09/2017;</b></p> <p>Monitoring Report received. This project looks at the retention and recruitment of the volunteers, which enables Handiscope to target grass roots participation and provide a quality community recreation programme.</p> <p>In June the group celebrated our 46th Birthday with a luncheon and an end of year Christmas function. The project Grant paid for all our Volunteer staff to attend the meal free of charge. The cost of the two meals for the volunteers was over \$400 and all the grant was spent.</p> <p>The organisation reports 2,720 volunteer hours.</p>

## PAPANUI-INNES END OF PROJECT SUMMARY DRF 2017-18

Project Details	Project Outcomes
<p>00057254</p> <p><b>Organisational Name</b> Papanui-Innes Community Board</p> <p><b>Name of Project</b> Engagement with the Community</p> <p><b>Requested amount</b> \$500 For</p> <p><b>Granted amount</b> \$500</p> <p><b>Spent on</b> \$311.30 Two x 2.2 metre Tear Drop Flags with single side printing</p>	<p><b>How Much Did They Do?</b></p> <p>This allows the Papanui-Innes Community Board in conjunction with staff from the Community Support Governance and Partnerships Unit to actively engage with parts of the community where:</p> <p>Projects have been identified as a result of feedback from the community, local community organisations and Non-Governmental Organisations.</p> <p>A need is identified or emerges that requires short-term intensive work that includes community engagement processes.</p> <p><b>Who Is Better Off As A Result?</b></p> <p>Knowledge of the wider community in respect of the Community Board's contribution to an event. through the purchase of collateral.</p> <p><b>Staff Comment</b></p> <p><b>Decision Date; 13/10/2017;</b></p> <p>Monitoring report received invoice attached.</p> <p>Two x 2.2 metre Tear Drop Flags with single side printing was purchased to advertise the above</p> <p>The balance of \$188.70 unspent, was placed back in the Papanui-Innes 2017/18 DRF.</p>



## PAPANUI-INNES END OF PROJECT SUMMARY DRF 2017-18

Project Details	Project Outcomes
<p>00057092</p> <p><b>Organisational Name</b> Papanui-Innes Community Board</p> <p><b>Name of Project</b> Youth Recreation Project</p> <p><b>Requested amount</b> \$6,000 For Combined Pool Youth Event - \$1,200 Belfast Skate Jam Event - \$2,300 Amazing Race - \$2,000 Smaller youth events - \$500</p> <p><b>Granted amount</b> \$3,500 For the delivery of the Youth Recreation Project in the Papanui- Innes Ward.</p> <p><b>Spent on</b> As granted</p>	<p><b>How Much Did They Do?</b></p> <p>The Community Support Governance and Partnerships Unit has been running these events for a number of years. The past youth events and activities have been well supported by youth and their families with past evaluations being extremely positive. CCC staff in collaboration with the youth organisations and young people planned, co-ordinated and delivered the following activities for young people in the Papanui-Innes ward.</p> <ul style="list-style-type: none"> <li>- Belfast Skate Jam – Another successful event. The event was organised by Council staff in conjunction with Skate Skool and approximately 150 young people attended the event.</li> <li>- Jellie Park Pool Party - A joint event with the Fendalton-Waimairi-Harewood area. This event was held at Jellie Park on a Friday evening approximately 300 youth from the local youth groups attended</li> <li>- Two youth events were hosted by PYDT colour bash and band night.</li> </ul> <p><b>Who Is Better Off As A Result?</b></p> <p>This project is to ensure provision of youth activities, events and programmes occurring throughout the Papanui-Innes ward. The project makes sure that the social and recreation needs of the youth within the ward are met by working with key organisations in a collaborative approach whilst building the organisations capacity. The project contributes to the wellbeing and prosperity of the local community but specifically the local youth and their families.</p> <p>These events continue to be well attended and positive feedback is received both from the young people and parents who attend. A large majority of participants said they would attend again and appreciated the opportunity to be involved in activities that at times are unaffordable for them.</p> <p><b>Staff Comment</b></p> <p><b>Decision Date; 13/10/2017;</b></p> <p>This project ensured youth had access to a number of events throughout the Papanui-Innes ward. Most importantly, these events were run in collaboration with community organisations and had a strong focus on groups developing relationships with each other and increasing the capacity of local youth organisations to assist in running these and future events.</p>

## PAPANUI-INNES END OF PROJECT SUMMARY DRF 2017-18

Project Details	Project Outcomes
<p><b>00057019</b></p> <p><b>Organisational Name</b> Papanui-Innes Community Board</p> <p><b>Name of Project</b> Papanui-Innes Edible Gardens Awards</p> <p><b>Requested amount</b> <b>\$4,000</b> For The delivery of Edible Garden Awards in the Papanui-Innes Ward</p> <p><b>Granted amount</b> <b>\$4,000</b></p> <p><b>Spent on</b> <b>\$2,989.67</b> Venue hire - \$226 Catering - \$1,088.10 Horticultural Society \$1,043.48 Photography - \$75 Printing - 278.27 Misc Office and Prizes \$278.82</p>	<p><b>How Much Did They Do?</b></p> <p>The Awards are a partnership between the Papanui-Innes Community Board and the Canterbury Horticultural Society and the award is dedicated to residents within the ward that grow their own edible gardens.</p> <p><b>Who Is Better Off As A Result?</b></p> <p>The Awards were held on 22 March 2018, 6.00pm at the Chapel Street Centre, the event attracted <b>78</b> attendees, of which <b>61</b> were nominees (including school children), and friends and families of the nominees. The remainder were Elected members (Board and Councillors) Judges and presenters, Members of the Horticultural Association and Council staff. Student photographers from Papanui High school also attended.</p> <p>Feedback from the attendees gained from the evaluation form highlighted that 100% of responders agreed or strongly agree that the venue was suitable for this type of event, that the Timing of this event was convenient, that the catering was suitable for the event and that the event was well run.</p> <p>Any other comments included "Thank you so much for valuing gardens and gardeners. This event is the highlight of our year as we don't often get to congregate with other gardening fanatics" "Awesome event, well organised and enjoyable" "A great night everyone loved it" ".Good comfortable seating welcomed" "Lovely venue, easy to get to, great to have so much easy parking". Great welcoming venue, comfortable and easy to see.</p> <p><b>Staff Comment</b></p> <p><b>Decision date; 13/10/2017;</b></p> <p>Monitoring report received Invoices attached.</p> <p>The Awards continue to build on the excellent relationship between Council, The Horticultural Society, local Schools Community Organisations and the local community. These Awards also recognise the growing trend within local communities in creating their own edible gardens within their backyards, schools and community spaces. The Awards continue to underline the Boards vision of growing the relationship with local primary schools, championing the next generation to grow their own food, nurture their environment themselves and with others.</p> <p>The balance of \$1,010.33 unspent, was placed back in the Papanui-Innes 2017/18 DRF.</p>

## PAPANUI-INNES END OF PROJECT SUMMARY DRF 2017-18

Project Details	Project Outcomes
<p><b>00057243</b></p> <p><b>Organisational Name</b> <b>Papanui-Innes Community Board</b></p> <p><b>Name of Project</b> Papanui-Innes Community Pride Garden Awards</p> <p><b>Requested amount</b> <b>\$3,000</b> For the delivery of the Papanui-Innes Garden Pride Awards</p> <p><b>Granted amount</b> <b>\$3,000</b> For the delivery of the Awards.</p> <p><b>Spent on</b> <b>\$1,793.99</b> Venue - \$173.91 Catering - \$1,209 Photography - \$107.61 Printing - \$169.36 Misc - \$134.11</p>	<p><b>How Much Did They Do?</b></p> <p>This year Christchurch celebrates its 28<sup>th</sup> year of Community Pride Garden Awards, the awards are a Council initiative and has been a joint venture between the Community Boards and the Christchurch Beautifying Association since 1997. The awards encourage civic pride and acknowledge those who have contributed to maintaining the image of Christchurch as the Garden City by beautifying their streets and gardens. Between 13 and 29 January 2018 volunteer judges from the Christchurch Beautifying Association selected gardens for Community Pride Garden Awards (the judging for Street and Garden Awards takes place at the same time).</p> <p>Volunteer judges placed 106 cards in letterboxes (gardens identified by Christchurch Beautifying Assoc.), 79 cards were returned by recipients.</p> <p>27 certificates were presented at function and 52 certificates were posted to recipients.</p> <p><b>Who Is Better Off As A Result?</b></p> <p>Papanui-Innes Community Pride Garden Awards 2018 Awards ceremony was held at the Chapel Street Centre on the 6 March 2018. The awards event attracted a total of 64 in attendance, this was made up of: 44 recipients/family members, 5 members of the Papanui-Innes Community Board, 7 representatives of the Christchurch Beautifying Association, 2 photography students and a teacher from Papanui High School, and six Christchurch City Council staff. The speaker at the awards was Ron Andrew, President of the Christchurch Beautifying Association.</p> <p>Those citizens who were contributed to the image of the Garden City received acknowledgement for their efforts.</p> <p><b>Staff Comment</b></p> <p><b>Decision date 13/10/2017;</b></p> <p>Monitoring report received with attached Budget costs.</p> <p>The feedback statistics from the Evaluation form highlighted that 100% of the respondents agreed or strongly agreed that the timing of the event was convenient, that the venue was suitable for this type of event, the event was well run and that the catering was suitable for the event.</p> <p>The balance of \$1,206.01 unspent, was placed back in the Papanui-Innes 2017/18 DRF.</p>

## PAPANUI-INNES END OF PROJECT SUMMARY DRF 2017-18

Project Details	Project Outcomes
<p>00057364</p> <p><b>Organisational Name</b> Belfast Sports and Community Centre Inc.</p> <p><b>Name of Project</b> Patching, Part Sealing Clubs Car Park</p> <p><b>Requested amount</b> \$5,000 For Asphalt - \$5,000</p> <p><b>Granted amount</b> \$1,500 Towards the cost of car park pot hole repairs.</p> <p><b>Spent on</b> As granted</p>	<p><b>How Much Did They Do?</b> With all the traffic through their carpark has caused breaking up of surfaces and creating lots of huge Pot Holes. With the grant the club repaired 218m of existing car park, trimmed and compacted the exposed metal surface, applied emulsion tack coat to base and spread weed killer control granules, New asphalt laid to 25mm thick.</p> <p><b>Who Is Better Off As A Result?</b> The improvement to the surface has improved access and safety to the Clubs Car Park off March Place which is used extensively as a cut through from March Place to Sheldon Park Grounds car park / Community Network and Bowling Club and even through to Main North Road. The Carpark is also used as a drop off of Belfast School Children for parents and pick up after school safer than dropping them off on Main North Road. This improvement continues to provide this, safety drop off and pick up option.</p> <p><b>Staff Comment</b> <b>Decision date 8/12/2017;</b> Monitoring report received, Invoice sighted. The Boards contribution of \$1,500 was used towards the initial cost total of \$9,025.20. The total cost for the whole car park being resealed is \$92,000</p>

## PAPANUI-INNES END OF PROJECT SUMMARY DRF 2017-18

Project Details	Project Outcomes
<p>00057862</p> <p><b>Organisational Name</b> Papanui-Innes Community Board</p> <p><b>Name of Project</b> Papanui Bush Bridgestone Reserve Planting Programme Phase 2</p> <p><b>Requested amount</b> \$7,000 For</p> <p>Phase 2 of the Papanui Bush Bridgestone Reserve Planting Programme.</p> <p><b>Granted amount</b> \$7,000</p> <p><b>Spent on</b> As granted on plants</p>	<p><b>How Much Did They Do?</b></p> <p>At the Papanui-Innes Community Board Meeting held on 13 April 2018 the Community Board resolved to: Note its support for the regeneration of the Papanui Bush on the Bridgestone Reserve project. This project is a collaborative effort that will benefit the community and serve the generations to come. Grant \$7,000 from its Discretionary Response Fund 2017/18 towards Phase 2 of the Papanui Bush Bridgestone Reserve planting programme noting that the planting days are 27 April and 5 June 2018.</p> <p>Commenced the re-establishment of the Papanui Native bush in the Bridgestone Reserve and an unused drainage reserve in Langdons road within five years of the settler's arrival all the Papanui Bush was gone felled by the local sawmilling community.</p> <p><b>Who Is Better Off As A Result?</b></p> <p>Future generations will benefit from this replanting and regeneration of the native bush.</p> <p>The new plantings will play an important role in improving the ecological functionality of the city, assist in the return of bush birds and provide a unique opportunity for the community to be involved in the creation of a natural environment.</p> <p><b>Staff Comment</b></p> <p><b>Decision Date 13/04/2018;</b></p> <p>The collaborative nature of this project involving, Papanui Rotary, local NGO, Helen Anderson Trust, Papanui High School, local elected members, council staff including the Parks team and the Papanui Community Governance team and local businesses ensured a that this programme successfully involved a wide cross section of the local community working together on this project.</p> <p>Invoices attached in Fund force</p>

## PAPANUI-INNES END OF PROJECT SUMMARY DRF 2017-18

Project Details	Project Outcomes
<p>00057663</p> <p><b>Organisational Name</b> Te Ora Hou Otautahi Incorporated</p> <p><b>Name of Project</b> Polyphony - youth voice photography project</p> <p><b>Requested amount</b> \$3,000 For</p> <p>Equipment/Material \$2,500 Training - \$500</p> <p><b>Granted amount</b> <b>\$1,500 For</b> Towards the cost of equipment/materials and training for Polyphony.</p> <p><b>Spent on</b> As granted</p>	<p><b>How Much Did They Do?</b></p> <p>The work of the young people will be displayed publicly and exhibited for a period of months on local library windows, with the wider community invited to the launch of the photo exhibition. The exhibition will seek to raise awareness across the wider community as to what challenges young people face in their community</p> <p><b>Who Is Better Off As A Result?</b></p> <p>Polyphony - youth voice photography project. This project gives young people an opportunity to express their voice regarding the issues that impact and affect them within their community, through the medium of photography. Polyphony gives young people an opportunity to have greater involvement and participation in connecting with their local community. It will also give the community, schools, local government a greater understanding of the needs, wishes and perspectives of young people who would not necessarily be involved in decision making processes.</p> <p><b>Staff Comment</b></p> <p><b>Decision date 13/04/2018;</b></p> <p>Monitoring report received.</p> <p>Young people were given the unique opportunity using photography as the medium to express their voice and be heard about the challenges they personally face, issues and concerns of importance to them and which affect them living in our local community. The photography is still on public display on local library windows months after the exhibition event (which approximately 120 people attended). The exhibition event was attended by a diverse range of people from the wider Papanui Community, and 16 rangatahi exhibited their photography/artwork. Awareness of the concerns and issues of our rangatahi has been raised across the community. As part of the exhibition launch, rangatahi spoke publicly to their photography. This opportunity for public speaking together with their pride in having expressed their own voice creatively and being "heard" through public display of their artwork, has increased both the rangatahi's personal confidence and their sense of belonging in the Papanui Community.</p> <p>This event provided an excellent collaboration between the Papanui-Innes Community Board, Community Development Advisors, Te Ora Hou, Papanui Library, the young people who contributed and attended and the general public who could view the work</p>

## PAPANUI-INNES END OF PROJECT SUMMARY DRF 2017-18

Project Details	Project Outcomes
<p><b>00057678</b></p> <p><b>Organisational Name</b> <b>Crimewatch (ChCh) Inc.</b></p> <p><b>Name of Project</b> Northwest Community Patrols (65% FWH - 35% PI)</p> <p><b>Requested amount</b> <b>\$13,200</b> For Vehicle expenses - Repairs and running costs, additional fuel, Rego and WOF</p> <p><b>Granted amount</b> <b>\$2,000</b> Towards vehicle operating costs.</p> <p><b>Spent on</b> As granted</p>	<p><b>How Much Did They Do?</b></p> <p>Crimewatch (ChCh) Inc., is one of 150 nationwide volunteer community patrols. Their key focus is on creating safe, resilient communities. Crimewatch (ChCh) Inc. assist the Police and other community focused agencies by patrolling residential, business and industrial areas to deter and discover criminal activity, reporting signs of suspicious activity, recording and gathering information for Police, assisting at accident and crime scenes, watching out for stolen cars, reporting graffiti and other matters needing attention by Council, and helping to control crowds and assist the public at community events.</p> <p><b>Who Is Better Off As A Result?</b></p> <p>The Vision of the organisation is to create safe, resilient communities and to empower communities to prevent crime and create safer environments through the utilisation of trained and equipped volunteer patrols. Crimewatch (ChCh) Inc. currently cover the areas of Harewood, Belfast, Bishopdale, Burnside, Fendalton, Bryndwr, Strowan, Merivale, St Albans, Northwood, Casebrook, Redwood, Northcote, Mairehau, McLeans Island and the airport environs. They also cover urban parks and reserves including Roto Kohatu, Styx Mill Reserve and the Groynes.</p> <p><b>Staff Comment</b></p> <p><b>Decision Date 27/04/2018;</b></p> <p>The volunteer crime prevention patrollers come from diverse backgrounds and a wide range of ages. Collectively they contribute over 7,000 volunteer hours each year (including administration and training). The common denominators are that all of the patrollers want to serve the public and give back to their community by making it a safer place to live. Crimewatch although independent from the Police work very closely with them and receive regular Police guidance, training and tasking. Crimewatch (ChCh) Inc. also provide training for potential Police recruits. Crimewatch provided</p> <ul style="list-style-type: none"> <li>-Community patrolling as part of Community Patrols New Zealand (CPNZ), and in partnership with the NZ Police in the north and northwest of Christchurch.</li> <li>- Maintaining regular 2 person vehicular crime prevention and police tasked patrols in the streets and parks of the northern city and McLean's Island areas almost every night over the last 12 month period, Successfully deterred crime, assisted persons in need and provided Police with crime related intelligence.</li> <li>- Operated Police internal mail and case file runs between Papanui Police Station, (New Brighton Police Station), the Papanui based Child Protection Team and the Central Police Station 5 days/week throughout the year.</li> <li>- Provided regular checks of schools and school grounds during evenings, particularly during school holidays.</li> <li>- Provided regular Harewood Road Canterbury Charity Hospital runs to and from Christchurch Hospital including conveyance of elderly and disabled patients, as well as transporting operating instruments for sterilization</li> </ul> <p>Monitoring report received and Invoices received for vehicle purchase and vehicle expense report received.</p>



## PAPANUI-INNES END OF PROJECT SUMMARY DRF 2017-18

Project Details	Project Outcomes
<p><b>00057370</b></p> <p><b>Organisational Name</b> St Albans School</p> <p><b>Name of Project</b> Traffic Wardens and Patrol</p> <p><b>Requested amount</b> \$4,500 For Traffic Wardens and Patrol</p> <p><b>Granted amount</b> \$2,250 Towards the cost of Traffic Wardens and Patrols.</p> <p><b>Spent on</b> As granted</p>	<p><b>How Much Did They Do?</b></p> <p>The school currently funds two traffic wardens to ensure that children safely cross the roads on Trafalgar St and Cranford St. This occurs each morning from 8:30 - 9am. In addition the Cranford St patrol operates each afternoon from 3:00-3:30pm.</p> <p>Ongoing issues and complaints re traffic behaviour around St Albans School including the Trafalgar street entrance, Berwick/Cranford Street and Cranford Street/Westminster Street intersections have highlighted the need for resourced Traffic Warden and Patrol support in this area.</p> <p><b>Who Is Better Off As A Result?</b></p> <p>The funding grant for an additional traffic warden and also a two-week police sting were launched in a bid to address the ongoing problem of speed, dangerous driving and inappropriate parking which has been compromising the safety of pupils around Westminster, Trafalgar and Cranford Streets. Police and the city council ran the education and enforcement – CHAOS at the school gates' programme to address the issues.</p> <p><b>Staff Comment</b></p> <p><b>Decision Date; 8/12/2017;</b></p> <p>Monitoring report received.</p> <p>Funding supported payment for the traffic wardens the school employ, specifically for the Cranford Street, Westminster Street Intersection, which has a very high volume of traffic and the intersection is dangerous and notorious for red light runners. The traffic warden ensures the safety of large numbers of children crossing at this intersection. The funding helped free up the schools budget for other needs such as learning support and curriculum resources.</p> <p>The community board has also requested that the city council make school warning signage a priority in the 2018/19 financial year.</p> <p><b>Note;</b> St Albans School was the first school to trial the initial Chaos at the School Gate campaign in 2004. At that time St Albans School was chosen to trial the campaign because it has a long history of pro-active promotion of road safety within the classrooms and with the wider school community.</p>



## PAPANUI-INNES END OF PROJECT SUMMARY DRF 2017-18

Project Details	Project Outcomes
<p><b>00058312</b></p> <p><b>Organisational Name</b> Papanui R.S.A Inc.</p> <p><b>Name of Project</b> Memorabilia Display Cabinets Split 60% P-I / 40%F-W-H)</p> <p><b>Requested amount</b> \$40,945 For Memorabilia Display Cabinets</p> <p><b>Granted amount</b> \$8,000 Towards Memorabilia cabinet costs.</p> <p><b>Spent on</b> As granted</p>	<p><b>How Much Did They Do?</b></p> <p>The Papanui RSA is open around 68 hours per week during which time any members can visit, members of the public can come and look around, school and pre-school groups make visits and many community groups use the rooms at the RSA for meetings and events. The cabinets will allow the RSA to display all memorabilia in a secure way.</p> <p><b>Who Is Better Off As A Result?</b></p> <p>The inbuilt cabinets will display, preserve and secure the RSA's extensive collection of memorabilia. Most of the collection has been donated by Veterans and their families from all arms of the New Zealand Services. This collection includes medals, uniforms or parts of them, equipment and many other irreplaceable pieces of our history. The cabinets will also display the photos of those who have served from this Community. Members come into the RSA to remember and to share their stories and it is important that memorabilia is displayed appropriately. The club also has many overseas guests, school groups, and community groups who visit the RSA to view the memorabilia and to visit the gravesite of Charles Upham, (Victoria Cross and Bar).</p> <p><b>Staff Comment</b></p> <p><b>Decision Date 20/06/2018;</b></p> <p>The inbuilt cabinets will improve and secure display areas for this irreplaceable collection. The interior of the RSA will be improved by this project as the collection will be appropriately displayed. Memorabilia will be shown the respect it deserves, which in turn shows appropriate and respect and support for those who have donated it and for all who served.</p> <p>Monitoring report received, and Invoices sighted.</p>

---

## 9. Elected Members' Information Exchange

---

This item provides an opportunity for Board Members to update each other on recent events and/or issues of relevance and interest to the Board.