

## **Innovation and Sustainable Development Committee AGENDA**

---

### **Notice of Meeting:**

An ordinary meeting of the Innovation and Sustainable Development Committee will be held on:

**Date:** Wednesday 27 February 2019  
**Time:** 9am  
**Venue:** Committee Room 1, Level 2, Civic Offices,  
53 Hereford Street, Christchurch

---

### **Membership**

Chairperson	Councillor Vicki Buck
Deputy Chairperson	Councillor Sara Templeton
Members	Councillor Jimmy Chen
	Councillor Mike Davidson
	Councillor Anne Galloway
	Councillor Jamie Gough
	Councillor Glenn Livingstone
	Deputy Mayor Andrew Turner

---

**22 February 2019**

### **Principal Advisor**

Brendan Anstiss  
General Manager Strategy &  
Transformation  
Tel: 941 8472

Sarah Drummond  
Committee and Hearings Advisor  
941 6262  
sarah.drummond@ccc.govt.nz  
[www.ccc.govt.nz](http://www.ccc.govt.nz)

Note: The reports contained within this agenda are for consideration and should not be construed as Council policy unless and until adopted.  
If you require further information relating to any reports, please contact the person named on the report.

**To view copies of Agendas and Minutes, visit:**

<https://www.ccc.govt.nz/the-council/meetings-agendas-and-minutes/>

# Strategic Framework

**The Council's Vision** – Christchurch is a city of opportunity for all.

Open to new ideas, new people and new ways of doing things – a city where anything is possible.

## Whiria ngā whenu o ngā papa Honoa ki te maurua tāukiuki

Bind together the strands of each mat  
And join together with the seams of respect  
and reciprocity.

The partnership with Papatipu Rūnanga  
reflects mutual understanding and respect,  
and a goal of improving the economic,  
cultural, environmental and social  
wellbeing for all.

### Overarching Principle

Partnership – Our  
people are our taonga  
– to be treasured and  
encouraged. By working  
together we can create  
a city that uses their  
skill and talent, where  
we can all participate,  
and be valued.

### Supporting Principles

Accountability	Collaboration
Affordability	Prudent Financial Management
Agility	Stewardship
Equity	Wellbeing and resilience
Innovation	Trust

## Community Outcomes

What we want to achieve together as our city evolves

### Strong communities

Strong sense of  
community  
Active participation in  
civic life  
Safe and healthy  
communities  
Celebration of our  
identity through arts,  
culture, heritage and  
sport  
Valuing the voices of  
children and young  
people

### Liveable city

Vibrant and thriving  
central city, suburban  
and rural centres  
A well connected and  
accessible city  
Sufficient supply of, and  
access to, a range of  
housing  
21st century garden city  
we are proud to live in

### Healthy environment

Healthy waterways  
High quality drinking  
water  
Unique landscapes and  
indigenous biodiversity  
are valued  
Sustainable use of  
resources

### Prosperous economy

Great place for people,  
business and investment  
An inclusive, equitable  
economy with broad-  
based prosperity for all  
A productive, adaptive  
and resilient economic  
base  
Modern and robust  
city infrastructure and  
community facilities

## Strategic Priorities

Our focus for improvement over the next three years and beyond

Enabling active citizenship and connected  
communities

Maximising opportunities to develop a vibrant,  
prosperous and sustainable 21st century city

Climate change  
leadership

Informed and proactive  
approaches to natural  
hazard risks

Increasing active, public  
and shared transport  
opportunities and use

Safe and sustainable  
water supply and  
improved waterways

INNOVATION AND SUSTAINABLE DEVELOPMENT COMMITTEE - TERMS OF REFERENCE

<b>Chair</b>	Councillor Buck
<b>Membership</b>	Councillor Templeton (Deputy Chair), Deputy Mayor Turner, Councillor Davidson, Councillor Gough, Councillor Livingstone, and Councillor Swiggs
<b>Quorum</b>	Half of the members if the number of members (including vacancies) is even, or a majority of members if the number of members (including vacancies) is odd.
<b>Meeting Cycle</b>	Monthly
<b>Reports To</b>	Council

**Areas of Focus**

The focus of the Innovation and Sustainable Development Committee is driving the concept of innovation, as in the City vision of a “City of Opportunity, where anything is possible” and to do so in ways that may be experimental and different.

The Committee considers and reports to Council on issues and activities relating to:

- Strategies and priorities in relation to innovation and sustainable development.
- Climate change and sustainability initiatives such as electric vehicles, carbon reduction and waste minimisation.
- City Promotion initiatives such as Christchurch Narrative and Visitors Strategy.
- Innovative or disruptive strategies and programmes, including Smart Cities programme of work.
- Innovative approaches to the delivery of issues that often go across levels of government.
- Allocation of funds related to the innovation and sustainability sector, including a new Innovation and Sustainability Fund.
- Council’s Brand and Communications strategies.

**Delegations**

- The Council delegates to the Innovation and Sustainable Development Committee the authority to make decisions on applications to the Enliven Places Projects Fund of more than \$15,000.
- The Innovation and Sustainable Development Committee has the delegated authority to approve Applications to the Innovation and Sustainability Fund seeking between \$10,001 and \$100,000 *and Council approval will be required for Committee funding recommendations over \$100,001.* The following resolution was passed at the Council meeting of 28 September 2017 and 28 June 2018.

## 42. Innovation and Sustainability Fund Establishment

### Council Resolved CNCL/2017/00001

That the Council:

1. Approve the creation of an Innovation and Sustainability Fund ("Fund") for 2017/18 funded by:
  - a. \$400,000 from the Capital Endowment Fund as provided in the 2017/18 Annual Plan; and
  - b. Additional funding from donations in lieu of the Councillors Director Fees as provided for in the Policy for the Appointment of Directors to Council Organisations (adopted 28 September 2017, reference CNCL/2017/00002).
2. Approve the funding in the draft 2018-28 Long Term Plan for future years until 2025:
  - a. \$400,000 per year from the Capital Endowment Fund for the first three years; and
  - b. additional funding from donations in lieu of the Councillors Director Fees as provided for in the Policy for the Appointment of Directors to Council Organisations.
3. Delegate to:
  - a. the Head of Urban Design, Regeneration and Heritage, the delegated authority to approve Innovation and Sustainability Grant applications of up to and including \$10,000 in accordance with the Terms Of Reference for the Fund; and
  - b. the Innovation and Sustainable Development Committee, the delegated authority to approve Innovation and Sustainability Grant applications between \$10,001 and \$100,000, in accordance with the Terms Of Reference for the Fund; and
  - c. the Head of Urban Design, Regeneration and Heritage the delegated authority to determine and carry out the administration requirements for this Fund, and to enter into Funding Agreements with Grant recipients.
4. Approve the Fund's Terms of Reference, as amended by these resolutions (Attachment A of the report).
5. Approve that any unallocated funds remaining at financial year end (30 June annually) will be recognised as committed, but unallocated on the Balance Sheet and added to the total funding available for allocation.

Councillor Buck/Councillor Scandrett

**Carried**

### Council Resolved CNCL/2018/00130

That the Council:

1. Approve the following amendment to the Innovation and Sustainability Fund's Terms of Reference (word changes in italics):
  - a. Applications seeking between \$10,001 and \$100,000 will be delegated to the Innovation and Sustainable Development Committee, *and Council approval will be required for Committee funding recommendations over \$100,001.*
2. Delegate to the Head of Urban Design, Regeneration and Heritage the decision to publicly release this report when there is no longer any commercial sensitivity relating to any of the applications.

Councillor Buck/Councillor Davidson

**Carried**



---

Part A	Matters Requiring a Council Decision
Part B	Reports for Information
Part C	Decisions Under Delegation

---

## TABLE OF CONTENTS

C	1.	Apologies.....	6
B	2.	Declarations of Interest.....	6
C	3.	Confirmation of Previous Minutes .....	6
B	4.	Public Forum .....	6
B	5.	Deputations by Appointment.....	6
B	6.	Presentation of Petitions .....	6

## STAFF REPORTS

B	7.	Central City Biannual Report - July - December 2018 .....	11
C	8.	Resolution to Exclude the Public .....	27

## 1. Apologies

Apologies were received from Councillor Galloway and Councillor Templeton.

## 2. Declarations of Interest

Members are reminded of the need to be vigilant and to stand aside from decision making when a conflict arises between their role as an elected representative and any private or other external interest they might have.

## 3. Confirmation of Previous Minutes

That the minutes of the Innovation and Sustainable Development Committee meeting held on [Monday, 10 December 2018](#) be confirmed (refer page 7).

## 4. Public Forum

A period of up to 30 minutes may be available for people to speak for up to five minutes on any issue that is not the subject of a separate hearings process.

It is intended that the public forum session will be held at <Approximate Time>

### 4.1 Green Star Building

Andrew Eagles will speak on behalf of New Zealand Green Building Council regarding opportunities in

- New buildings
- Existing buildings
- New homes
- Existing homes

### 4.2 Superhome Movement

Bob Burnett will speak on behalf of Superhome movement regarding the plans for this years Superhome tours and other wider initiatives and targets to normalise building sustainability in the Garden City.

### 4.3 Central City Festival

Bree Loverich will speak on behalf of ChristchurchNZ regarding Central City Artwork and festival.

## 5. Deputations by Appointment

There were no deputations by appointment at the time the agenda was prepared.

## 6. Petitions

There were no petitions received at the time the agenda was prepared.

---

## Innovation and Sustainable Development Committee OPEN MINUTES

---

**Date:** Monday 10 December 2018  
**Time:** 9:04am  
**Venue:** Committee Room 1, Level 2, Civic Offices,  
53 Hereford Street, Christchurch

---

**Present**

Chairperson	Councillor Vicki Buck
Members	Councillor Mike Davidson
	Councillor Jamie Gough
	Councillor Glenn Livingstone
	Councillor Deon Swiggs
	Councillor Sara Templeton

---

10 December 2018

**Principal Advisor**

Brendan Anstiss  
General Manager Strategy &  
Transformation  
Tel: 941 8472

Mark Saunders  
Committee and Hearings Advisor  
941 6436  
mark.saunders@ccc.govt.nz  
[www.ccc.govt.nz](http://www.ccc.govt.nz)

To view copies of Agendas and Minutes, visit:  
[www.ccc.govt.nz/Council/meetingminutes/agendas/index](http://www.ccc.govt.nz/Council/meetingminutes/agendas/index)

**Part A Matters Requiring a Council Decision**

**Part B Reports for Information**

**Part C Decisions Under Delegation**

•

The agenda was dealt with in the following order.

**1. Apologies**

**Part C**

There were no apologies.

**2. Declarations of Interest**

**Part B**

There were no declarations of interest recorded.

**3. Confirmation of Previous Minutes**

**Part C**

**Committee Resolved ISDC/2018/00037**

**Committee Decision**

That the minutes of the Innovation and Sustainable Development Committee meeting held on Wednesday, 21 November 2018 be confirmed.

Councillor Davidson/Councillor Templeton

Carried

**4. Public Forum**

**Part B**

- 4.1** Stephanie Fry spoke on behalf of IdealCup to introduce their CupCycling Programme to Christchurch, which they describe as a simple and effective programme for cafes to divert single-use cups from landfill.
- 4.2** Dr George Parker and Clare Wilkinson spoke on behalf of the Christchurch Arts Festival regarding their plans to develop an annual spectacle of light, sound and performance in the central city as a key part of the new festival.

**5. Deputations by Appointment**

**Part B**

There were no deputations by appointment.

**6. Presentation of Petitions**

**Part B**

There was no presentation of petitions.

## 7. Development Contributions - Small Residential Unit Rebate

**Committee Decided ISDC/2018/00038 (Original Staff Recommendations Accepted without Change)**

### Part A

That the Innovation and Sustainable Development Committee recommends that the Council:

1. Agrees to the small residential unit development contributions rebate being extended to the earlier of any of:
  - A reviewed Development Contributions Policy being adopted by the Council, or
  - The fund is fully allocated, or
  - 31 December 2019.
2. Adopts the revised small residential unit development contributions rebate scheme criteria (Attachment 1 to the report)

Councillor Gough/Councillor Swiggs

Carried

## Election of a Deputy Chairperson

### Committee Comment

The Committee noted the Council resolution of 6 December 2018 accepting Councillor Tim Scandrett's resignation from the Committee, and noted that the Council further resolved that that resolution will take effect from 1 January 2019.

### Committee Resolved ISDC/2018/00039

It was resolved on the motion of Councillor Vicki Buck, seconded by Councillor Mike Davidson that Councillor Sara Templeton be appointed Deputy Chairperson of the Innovation and Sustainable Development Committee upon the Council resolution to accept the resignation of Councillor Tim Scandrett from the Committee taking effect on 1 January 2019.

Councillor Buck/Councillor Davidson

Carried

## 8 Resolution to Exclude the Public

### Committee Resolved ISDC/2018/00040

### Part C

That at 9:47am the resolution to exclude the public set out on pages 23 to 24 of the agenda be adopted.

Councillor Gough/Councillor Davidson

Carried

**The public were re-admitted to the meeting at 10:11am at which time the meeting concluded**

**CONFIRMED THIS 27<sup>th</sup> DAY OF FEBRUARY 2019**

COUNCILLOR VICKI BUCK  
CHAIRPERSON

**Item 3 - Minutes of Previous Meeting 10/12/2018**



## 7. Central City Biannual Report - July - December 2018

Reference: 19/8309

Presenter(s): Danielle Yeoman, Planner, Urban Regeneration

### 1. Purpose and Origin of Report

#### Purpose of Report

- 1.1 The purpose of this report is for the Innovation and Sustainable Development Committee to be informed of the Christchurch City Council funded regeneration activity within the Central City for the period July to December 2018.
- 1.2 This report does not include regeneration matters led by Development Christchurch Limited, Regenerate Christchurch or ChristchurchNZ, as this work is reported separately. Progress on An Accessible City is also reported separately.

#### Origin of Report

- 1.3 This report is staff generated in accordance with the 2018-2028 Strategic Planning Activity Management Plan.

### 2. Significance

- 2.1 The decision in this report is of low significance in relation to the Christchurch City Council's Significance and Engagement Policy.
  - 2.1.1 The level of significance was determined by considering the effects of a decision to receive a status report. Whereas the activities reported on have a positive benefit, the funding and principal decision making on these activities lies outside of this report and the decision itself is of low significance.
  - 2.1.2 The community engagement and consultation outlined in this report reflect the assessment.

### 3. Staff Recommendations

[That the Innovation and Sustainable Development Committee:](#)

1. [Receive this report for information.](#)

### 4. Key Points

- 4.1 **Attachment A** sets out the highlights (including graphs and photographs) for the July to December 2018 period. In reflecting the key themes of the Central City Action Plan (CCAP), highlights have been grouped into five categories; City Leadership, Amenity & Activation, Growth, People and Getting it Done. Included in these five categories are the following activities:
  - Recovery Coordination and Activation
  - Enliven Places Projects
  - Enliven Places Projects Fund
  - Support for the other organisations that lead transitional projects
  - Incentives Grants and Rebates
  - Central City Land Use Survey
  - Central City Development Contributions Rebate Fund

- Resource and Building Consents
- Project 8011
- Events Programme
- Communications and Marketing
- Delivery of Major Projects

## 5. Context/Background

5.1 Key points to note from the July to December period are outlined below.

### 5.2 City Leadership

#### *Action Plan*

5.2.1 On 8 November, the Council approved the Central City Action Plan. The Action Plan builds on the Council's 21st Century City strategic priority work, economic updates from ChristchurchNZ and the Central City Momentum advice provided by Regenerate Christchurch.

5.2.2 A key development during the July to December period was the re-establishment of the Central City Development Forum; a consultative group to help inform and guide the Council. To ensure appropriate monitoring and reporting on the Action Plan, a Central City Office was established and a Programme Co-ordinator appointed.

### 5.3 Recovery Co-ordination and Activation

#### *Barrier Sites*

5.3.2 Over the July to December period, four sites were removed from the original Barrier Sites list as development proposals took shape.

#### *Activation*

5.3.3 In a bid to bolster the number of activities and events in the central city, a new searchable website of central city event spaces was created and a temporary Central City Activator position formed. Working with the events team, central city businesses and community interests, it is anticipated that the Central City Activator will facilitate everyday activities and small scale events to add vibrancy to city life; the temporary role will operate from 4 February – 30 June 2019.

#### *Tram Extension*

5.3.4 Over the July to December period, extension of the tram beyond the current interim terminus at Manchester Street has continued to be explored. This extension will assist in the activation of the recently renamed 'Salt District'.

#### *Cathedral Square Improvements*

5.3.5 During this reporting period, the Cathedral Square Improvement Project Control Group developed an early design for the South of the square. The design will be presented to the Infrastructure, Transport and Environment Committee in February 2019.

#### *Enliven Places Programme*

5.3.6 Key projects completed within this reporting period include 'ShoPOP' installations (*Pompoms*, *Until Works End* and *Light it Up*), which were installed in vacant retail tenancies. A landscaping refresh of the Commons at 70 Kilmore Street was completed.

- 5.3.7 Other Enliven Places projects completed in this reporting period include the auction of the Urban Sheep, which raised \$10,000 for the Mental Health Foundation.

*Grants and Funds*

- 5.3.8 The Enliven Places Projects Fund supports community-led projects that temporarily activate vacant sites. Over the July to December period, projects supported by the fund include *Māketē* which saw the re-activation of the Arts Centre Market Square and the *Take Flight Butterfly House* in the Kahikatea Commons. The Fund also supported the *Little Andromeda*; a pop-up theatre which hosted over 92 performances and attracted nearly 7,000 attendees to the central city.
- 5.3.9 Between the July to December period, the Enliven Places Rates Incentive provided a rates reduction to six sites in the Central City that were activated by temporary projects.
- 5.3.10 The Council supports Gap Filler (GF), Greening the Rubble (GtR) and Life in Vacant Spaces (LiVS) with an annual grant. Over the July to December period, the City Making Partners have brought a number of projects to life including the Bamboo Pavilion at the Commons, an edible landscape garden at the Kairos Free Store and the continued support for artistic spaces (the Corner Store and Fiksate Gallery).
- 5.3.11 The Creative Hoarding Incentive encourages creative construction site hoardings by waiving fees usually charged to occupy legal road. Over the July to December period, a total of \$155,818 in road occupation fees was waived due to the use of quality hoardings.

5.4 **Growth**

*Central City Land Use Survey*

- 5.4.2 The Central City Land Use Survey is completed bi-annually and provides an understanding of the status and use of sites located within the central city. The most recent survey was undertaken in July and shows substantive change in the built environment over the last two years.

5.5 **People**

*Project 8011*

- 5.5.1 The Central City Residential Programme (Project 8011) was adopted by the Council in September, 2018. Over the July to December period, the Development Forum conducted a workshop and provided valuable feedback with regards to one of the nine 8011 projects; Funding Opportunities and Incentives.

*Events*

- 5.5.2 Over 165,000 people attended a variety of events in the central city between the July to December period and the Council-led Explore marketing campaign attracted an average of 430 webpage views per day.

5.6 **Getting It Done**

- 5.6.1 The July to December period saw a number of key developments and public spaces being brought to use. The opening of Tūranga central library and the EntX cinema generated a substantial increase in foot traffic around the city. The City Promenade opened in November and has created a valuable corridor of open space.

**Consultation**

- 5.7 Consultation on Enliven Places and other regeneration projects is undertaken as appropriate with neighbouring landowners and tenants, and regeneration partners.

## Attachments

No.	Title	Page
A <a href="#">↓</a>	Central City Biannual Report Attachment July- December period 2018 (final)	15

## Confirmation of Statutory Compliance

Compliance with Statutory Decision-making Requirements (ss 76 - 81 Local Government Act 2002).

(a) This report contains:

- (i) sufficient information about all reasonably practicable options identified and assessed in terms of their advantages and disadvantages; and
- (ii) adequate consideration of the views and preferences of affected and interested persons bearing in mind any proposed or previous community engagement.

(b) The information reflects the level of significance of the matters covered by the report, as determined in accordance with the Council's significance and engagement policy.

## Signatories

<b>Authors</b>	Danielle Yeoman - Planner (Urban Regeneration) Laura Quaid - Assistant Planner - Urban Regeneration
<b>Approved By</b>	Carolyn Ingles - Head of Urban Regeneration, Design and Heritage Brendan Anstiss - General Manager Strategy and Transformation

## Attachment A

### Central City Biannual Report: Key updates July—December 2018



In reflecting the key themes of the Central City Action Plan (CCAP), updates for the Central City Biannual Report have been grouped into five categories;

- City Leadership
- Amenity and Activation
- Growth
- People
- Getting it Done



It should be noted that the Central City Biannual Report is not a complete evaluation of Action Plan progress; it also includes updates that are not explicitly reported through the CCAP governance structure reporting processes.

## City Leadership

### Central City Action Plan

#### Central City Action Plan

Oratangi Christchurch – explore the opportunity  
November 2018



On 8 November, the Council approved the Central City Action Plan. The Action Plan builds on the Council's 21st Century City strategic priority work, economic updates from ChristchurchNZ and the Central City Momentum advice provided by Regenerate Christchurch. The advice highlighted the need to attract more people into the city, deliver on major projects, build cohesive leadership and clearly articulate what the city has on offer to its residents, visitors (from NZ and overseas) and investors.

The creation of the Action Plan is an important early marker of the intention to refocus the city's leadership by bringing together the collective effort of public agencies, central city business and community groups. As a plan of action it aims to grow the flow of people, activity and spending, as well as showcasing what the city has to offer to local, domestic and international audiences.

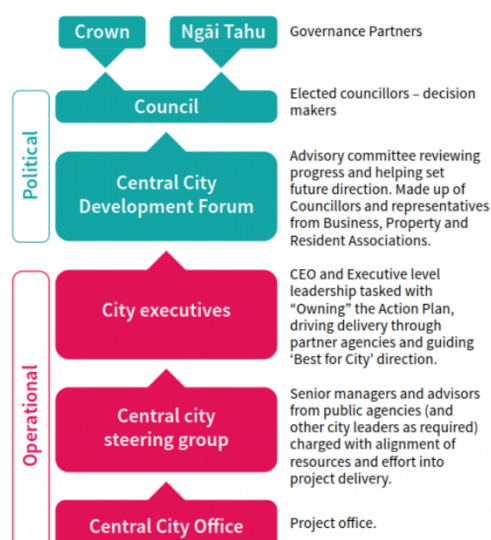
Focusing on the next three years (2019-2021) its goal is to drive progress and grow partnerships across the private, public and community sectors.

The Action Plan process has been a catalyst in restructuring central city governance arrangements. The adjacent diagram identifies the revised structure of political and cross agency entities and their roles.

A Central City Development Forum was re-established in October 2018 and is an important new consultative group to help inform and guide the Council. Its membership includes all councillors, representatives from business, property and employer umbrella organisations as well as residents associations. It offers an opportunity to build consensus around Central City issues.

At the operational level, coordination of cross agency action will be driven by a newly formed Central City Steering Group which will regularly report to the City Executives Forum.

The Central City Office, established in November 2018, will monitor and report progress, coordinate activity and drive forward specific or complex collaborative initiatives. A Programme Co-ordinator was appointed in December 2018 who will manage the office and Action Plan programme.





## Amenity and Activation

### Recovery Coordination and Activation

#### Barrier Sites

At 1 July 2018 there were 32 sites on the Barrier Sites list. Progress has been made on a number of sites over the last 6 months with a number of owners making announcements about future plans, clearing sites for redevelopment or commencing development.

Reflecting on the most significant changes, the following sites were removed from the list:

- 143 - 145 Armagh Street
- 673 Colombo Street (Pagoda Court)
- 158 High Street (Cotters)
- 201 - 203 High Street (Victoria Black façade)

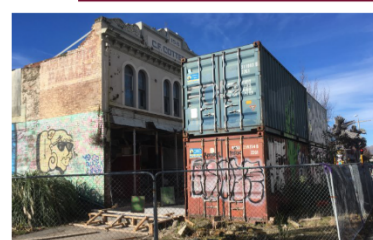
Christ Church Cathedral Reinstatement Limited took a significant step forward in late 2018 with a newly appointed Project Director and early dialogue with the Council regarding the reinstatement.

Ten of the buildings on the list remain without clear intentions.

More information regarding the barrier sites is available at [ccc.govt.nz/the-council/barrier-sites](http://ccc.govt.nz/the-council/barrier-sites)



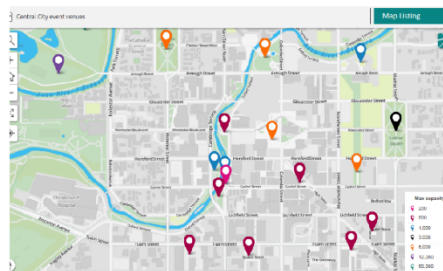
Container moved away from building to enable repair work



#### Activation

**Enabling Event and Small Scale Activations :** the promotion of event spaces has taken a step forward with [new searchable website](#) of Central City sites that are available to book. Information about each space is provided which includes capacity, available services and restrictions. A *Central City Activator* position has been created for an initial six month period (Jan-Jun 2019). Working with the events team, central city businesses and community interests, the role will facilitate everyday activities and small scale events to add vibrancy to city life.

**Wayfinding :** New skins for the existing visitor signage were designed with the intention of rolling them out across the Central City in early 2019.



#### Other project updates

**Public Realm Maintenance and upkeep:** The spring period saw concerted attention given to the removal of cones, signage and traffic management equipment from the city's streets combined with a full clean of the streets and footpaths. Reflecting on the changing balance between redevelopment and attracting people back, street access will increasingly favour public access and business operation.

**Tram Extension:** Options are currently being explored to extend the tram beyond the current interim terminus at Manchester Street. This extension will assist in the activation of the recently renamed "SALT" district.

The High Street Project scope has recently been extended to include completion of street improvements in High Street including earthquake repairs, and also related works in Cashel Street. There has been on-going engagement with stakeholders and a formal proposal for consultation on the tram and other street works is expected to be considered by the Council in April 2019.

**Cathedral Square:** The Cathedral Square Improvement Project Control group have developed an early design for the South of the square, which will be presented to the Infrastructure, Transport and Environment committee on 18 February, 2019.

**Free WiFi:** The Christchurch Free Wi-Fi was deployed in Cathedral Square last year and has been well received by visitors, business owners, and residents. The majority of the website traffic is used for uploading content to social media sites such as Facebook, Instagram, and Snapchat; thus providing great promotion of our central city as we had hoped with this initiative. The Wi-Fi will be extended into additional popular public realm areas in the central city in 2019.



## Amenity and Activation continued (July– December 2018)

### Enliven Places Completed Projects

#### Participating in Place-making: ShoPOP

As part of a public engagement campaign, the ShoPOP project activated three vacant shops with vibrant art installations. The Awly Building on Durham St hosted the Pompoms (elegant red tassels that dance together) and Until Works End (a whimsical diorama that reimagines the rebuild). The Vodafone Building had the third installation by Hagley College called Light it up! (a series of light sculptures that reflected the forms of Christchurch).



#### Collaborative: The Commons (70 Kilmore St)

A landscaping refresh has improved the site appearance. This included laying a pathway, gravel upgrades and boundary plantings. Gap Filler remains on the site and continues a range of community activations.



#### CCC Led: River of Words

Botanic D' Lights installation *River of Words* has been installed at 110 Cashel Street. In the evening people who walk past are able to interact with the lighting display. During the day the site provides a welcoming space with astro-turf and seating.



#### CCC Led: Urban Sheep

The urban sheep have been removed from the central city and were auctioned at the New Zealand Agricultural Show. Almost \$10,000 was raised for the Mental Health Foundation. Four sheep of a sturdier material will be installed in High Street in 2019.



#### Maintenance of Existing Assets

Maintenance includes; donating the mirror pillars to the New Brighton sensory garden, repaint of the High Street hoarding, decommissioning the kaleidoscope and replanting several city centre planters.



#### Participating in Place making: Pop-Up Gardens

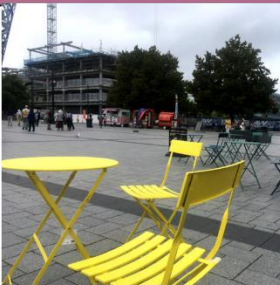
Following a public engagement process, three community designed gardens have been selected to be added to Cathedral Square. Time to Heal and Noodlescape have been installed in Cathedral Square, with an additional garden currently being built. The pop-up gardens add colour and seating to the square.



### Enliven Places Projects in Development/Discussion

#### CCC Led: Cathedral Square and surrounds

Projects planned for Cathedral Square include new seating and signage, support for Turanga to activate Library Plaza, a water drinking fountain and a digital art display. Proposed installations on Gloucester Street will aim to improve pedestrian connectivity.



#### CCC Led: Laneway Enhancements

Working with several landowners to provide a temporary laneway between Hereford Street and Cathedral Square has improved pedestrian connectivity with a 56% increase in movement along the laneway. Further enhancements will improve the visitor experience.



## Amenity and Activation continued (July– December 2018)

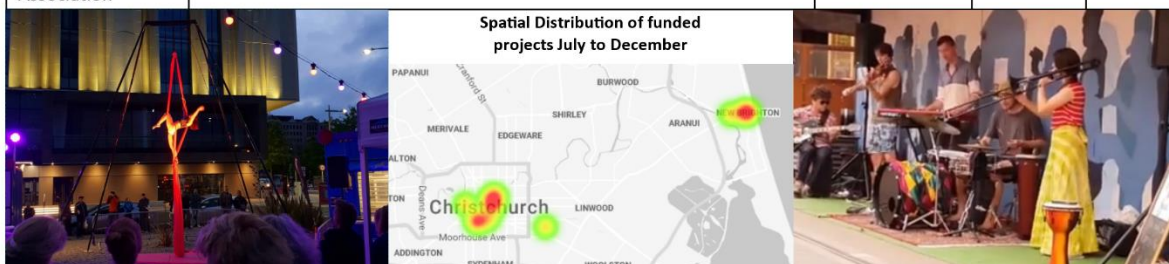
### Enliven Places Project Fund (EPPF) 2012 — present

Funding supports community-led projects that temporarily activate Christchurch's vacant spaces, supporting short and long term outcomes for wellbeing, sense of place and local economy. While the Fund has seen a number of projects supporting suburban locations in this reporting period, most projects focused in the central city, which aligns with the Central City Action Plan.

<b>Funds available</b> in 2018/19 (Year 7) :	<b>Available balance</b> at 1 July 2018:	<b>Closing balance</b> at 30 December 2018:
• \$150,000	• \$150,000	• \$53,822

### Grants this half year

Applicant	Project	Location	Status	Funded
<b>Central City</b>				
Michael Bell	<b>Little Andromeda.</b> Six-week pop-up theatre hosted 92+ performances from 50 theatre groups, musicians, circus companies and dance groups, attracting 7,000 attendees. 93% of surveyed responses rated their experience "Fantastically Awesome" and comments noted the low ticket costs made attending theatre affordable.	131 Gloucester St	Complete	\$14,970
Arts Centre Trust	<b>Arts Centre Māketē</b> (Oct 2018 – April 2019) and <b>Pop Up Art Exhibition:</b> From Ōtautahi with Love (Oct 2018 – Jan 2019). Reactivation of Market Square at the Arts Centre.	2 Worcester Blvd	Ongoing	\$11,990
Rachelle Hunt	<b>New Regent Street Summer of Music.</b> Free lunchtime jazz performances to bring vibrancy and encourage foot traffic.	36 New Regent St	Complete	\$14,200
Jason Donnithorne	<b>Kahikatea Community Pizza Oven.</b> A public pizza oven with regular "Open Oven" events hosted by Hagley College.	Kahikatea Commons (near 96 Tuam St)	Ongoing	\$9,917
Rotary Club of Christchurch & Sunrise Rotary Club	<b>Take Flight Butterfly House.</b> A Monarch Butterfly house overlooking Kahikatea Commons, maintained by St Michael's school students.		Ongoing	\$2,865
Revolution 3D	<b>Plain Sight.</b> Development of a free smartphone app that will augment 15 - 30 street art murals in central Christchurch.	Various, Central City	Ongoing	\$14,505
Rosie Mac	<b>The Grove of Intention.</b> A hoarding mural on Westpac Lane inviting the public to take part. Project is also supported by SPARK.	Westpac Lane	March 2019 start	\$3,900
Watch This Space	<b>Watch This Space Central City Mural.</b> A mid-scale kiwiana mural by a local emerging street artist.	158 Tuam St	Complete	\$1,300
<b>Suburban areas</b>				
Cubbin Theatre	<b>Up and Away.</b> Theatre for babies and their carers performed at the Phillipstown Community Hub and the Old School in New Brighton.	39 Nursery Rd; 140 Seaview Rd	Complete	\$4,777
Kerry Tunstall	<b>Art Science Tent.</b> Free events themed around Art and Science at the Old School in New Brighton.	140 Seaview Rd	Complete	\$3,438
Renew Brighton	<b>Enliven Brighton.</b> A window display of upcoming summer events in New Brighton aligned with the "Shore Thing" calendar.	40 Brighton Mall	Ongoing	\$2,414
Renew Brighton	<b>RECREATE.</b> Activation of 40 Brighton Mall to include a showcase of works by the makers at the Old School, as well as local artists	40 Brighton Mall	Ongoing	\$9,000
New Brighton Business Association	<b>Rockabilly Show and Shine Street Party.</b> An opening evening event to kick off the Rockabilly weekend in New Brighton.	Brighton Mall	Complete	\$2,900





## Amenity and Activation continued (July – December 2018)

### Grant funding city-making partners

The Council supports Gap Filler (GF), Greening the Rubble (GtR) and Life in Vacant Spaces (LiVS) with a grant of \$100,000 for each organisation per year. In this reporting period, the organisations all underwent significant shifts, with GF and LiVS each hiring a new Director and GtR undertaking a rebrand that will roll out in early 2019.

#### Gap Filler (GF)

GF's Grant Funding Agreement outlines regeneration outcomes – **Creativity and Innovation; Wellbeing; Collaborate and Connect; Lead and Advocate;** (organisational) **Resilience** – that are delivered through a range of activities, including five new projects per financial year.

GF focused on the central city this reporting period and completed FY17/18 project **SAYONARA Soup** (371 St Asaph St), the final CHCH Soup series that began in 2015. New FY18/19 projects include: **Lali Drum** (Ōtakaro City Promenade, near 215 Oxford Tce), created with the Canterbury Fijian community as the fourth DiversCity project; **Bamboo Pavilion** (70 Kilmore St), a reiteration of the pavilion displayed at FESTA 2018, which will showcase changing activations; **The Commons** (70 Kilmore St), a clean up of the site alongside the Council's landscaping upgrades, maintenance and a public programme. GF also worked collaboratively with **Biketober**, **Little Andromeda** and Samantha Brown's **PBS series Places to Love**.

GF continues to maintain ongoing projects including **Dance-O-Mat** and **Super Street Arcade**, and also began an organisational restructure. In addition to grant funded work, GF continues consultancy and commercial work, including **Placemaking at One Central** (Christchurch), **Panuku** and **Auranga** (Auckland). The organisation also certified as a social enterprise for Ākina Foundation's **fwd:** database.



#### Greening the Rubble (GtR)

GtR use a community-focused approach to deliver regeneration outcomes identified in its Grant Funding Agreement. This period GtR focused on organisational strengthening, including process and system improvement; recruiting new staff and Board members; rename and rebrand (launch early 2019); developing long-term partnerships; scoping and delivering income-generating projects; refining a future less reliant on Council grant funding.

New grant funded projects in collaboration with Te Pūtahi, Avon-Ōtakaro Network and Richmond Community Garden this period: **FESTA Kairos Free Store**, an edible landscape garden (311 St Asaph St); stage one of **Riverbend Refuge**, collaborative riparian planting for habitat restoration and Community Planting Day (309 River Road/RRZ); the first stage with the **Richmond Community Garden** to consult on and design a gathering space for a pop-up cafe (9 Eveleyn Cousins Ave). Revenue generating projects included landscape design/construction and indoor greening services partnering with Ōtakaro Orchard/Wood Ltd, Enliven Places Programme's Pop-up Gardens. An additional project, **Mobile Workshop**, received funding from the Council's Innovation and Sustainability Fund and Rāta Foundation.

Director, Puck Algera, attended the **Edinburgh Social Enterprise World Forum** on a scholarship, representing GtR as part of the official New Zealand delegation.



#### Life in Vacant Spaces (LiVS)

LiVS is meeting its Grant Funding Agreement outcomes through a range of activities, including: (i) 'site-matching' creative and entrepreneurial projects (ii) refreshing its portfolio of sites and (iii) providing advice to encourage and enable others with their projects.

LiVS has re-assessed their site portfolio to better reflect enquiries increasingly seeking indoor suburban sites for medium-term projects or entrepreneurial start-ups. LiVS has since ended seven leases for sites, continued thirteen and negotiated twelve new leases, six of which were secured in collaboration with the Enliven Places Programme. New and remaining sites host new and continuing projects including **ShoPOP** (213 Tuam St, 287 Durham St N), eight makers/artists at the **Corner Store** (314 Cashel St, collaboration with Box 112), **Fiksate Gallery** (165 Gloucester St) and **Tiny Shops** (108 Stanmore Rd). LiVS' focus in the next half-year will be on site matching projects and collaborations at their new St Martins site (35 Hassals Ln) and 100 Peterborough Street. They will also focus on the **Residential Red Zone** to fulfill their renewed, two-year license agreement with LINZ. LiVS did not renew their Piano Piazza license with Ōtakaro Limited.



## Amenity and Activation continued (July– December 2018)

### Enliven Places Programme incentives

#### Temporary Use of Legal Road Fee Waiver

In 2015 the Council established a process to encourage creative construction hoardings by waiving fees charged to occupy legal road. The purpose was to reduce the negative effect of hoardings whilst the city rebuilds. The Incentive is in place until June 2020.

Information, guidelines, pre-designed graphics and application forms available: [www.ccc.govt.nz/hoardings](http://www.ccc.govt.nz/hoardings).



#### Waivers

Applicant	Project	Artwork	Amount
Carried forward from previous period			
Naylor Love	Apartment development, Armagh St	Original content by developer	\$16,065
Naylor Love	Ballantynes renovation, Lichfield St	Pre-designed: Christchurch Life	\$21,650
Naylor Love	SPARK building, Cathedral Square	Pre-designed: Aromarea	\$35,802
Amalgamated Builders Ltd	Sudima Hotel Development	Pre-designed: Kaupeka Tae	\$15,606
Consortium. High Street	Duncan Buildings	Pre-designed: Urban Camouflage	\$40,116
Consortium. Cashel Street.	Guthrie Buildings	Pre-designed: Urban Camouflage	\$15,054
Consortium. Oxford Tce	Farmers' market site development	Original, showcase of future of site	\$3,397
New			
Leighs Construction	220 High Street	Pre-designed: Aromarea	\$8,128
<b>TOTAL</b>			<b>\$155,818</b>

#### Enliven Places Rates Incentive for Property Owners

A credit of up to \$5,000 (per rating unit or interior tenancy) over a 12-month period can be applied to sites activated by temporary projects that meet qualifying criteria. Following a staff report, the Council approved continuation of the Incentive with minor amendments until 30 June 2020. [www.ccc.govt.nz/rates-incentive](http://www.ccc.govt.nz/rates-incentive)

Funds Budgeted 2018/19: \$45,000 | Closing Balance 31 December 2018: \$14,240

Sites credited		\$ credited
Central City	Six sites: three interior sites hosted the Enliven Places Programme's <b>ShoPOP</b> , and an exterior site on Cashel St for the <b>River of Words</b> installation; other sites continue from previous periods including the <b>Cultivate Christchurch</b> site.	\$27,019
Suburban	Three sites: <b>Collett's Corner</b> in Lyttelton; <b>Tiny Shops</b> site on Stanmore Road; a new site in Southshore (corner Bridge Street and Estuary Road) to support the community project <b>Common Ground</b> .	\$3,741
<b>TOTAL</b>		<b>\$30,760</b>





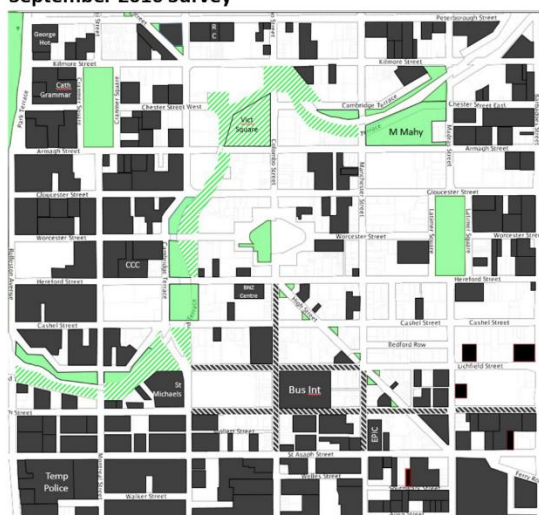
## Growth

### Central City Land Use Survey (July 2018)

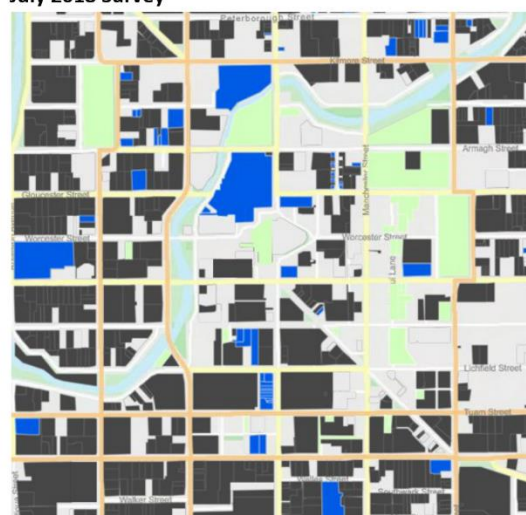
The Central City Land Use Survey commenced in September, 2016. The Survey is completed bi-annually and provides an understanding of the status and use of sites located within the central city. In 2017, the results of the survey were converted into GIS format as a means to attain a spatial perspective on rebuild/regeneration progress. A commentary on the results of the most recent July, 2018 survey is provided below.

**Note:** the survey methodology and map base has been altered since 2016. Sites 'under construction' are shown in the latest data.

#### September 2016 Survey



#### July 2018 Survey



Open Spaces Operative Buildings/Sites Inoperative sites Under Construction (2018 data only)

The Central City has seen substantive change in its built environment over the last 2 years with a large area of vacant land being developed for productive use, particularly in western and south central areas. Slower progress on the East Frame/One Central sites means that there is still a lot of inoperative land on the eastern side of the central city. A number of larger sites including the Arts Centre, Welles Street and Town Hall will be completed during 2019, and the Convention Centre by the end of 2020.

### Central City Development Contributions Rebate Funds

A rebate of development contributions is offered as an incentive for residential development within the Four Avenues, and commercial development in the Central City Business Zone. The rebate scheme has been extended until June 2020 (or until such time as the fund is exhausted).

Information about the process, FAQ's and qualifying criteria are on the Council website

<http://www.ccc.govt.nz/consents-and-licences/development-contributions/development-contributions-rebate-schemes/>

Residential Rebates July—December 2018	Total
Number of residential developments assessed within the four Avenues	12 (115 Units)
Number of residential units provisionally approved for the rebate	117
<b>Total Fund approved for qualifying developments during this period</b>	\$1,219,302.10
Total fund remaining	\$11,456,569.00
Non-Residential (Business Zone) Rebates July—December 2018	Total
Number of non-residential developments assessed within the Central City Business Zone	2
Number of non-residential units provisionally approved for the rebate	2
<b>Total fund approved for qualifying developments during this period</b>	\$82,505.70
Total Fund remaining	\$2,604,371.50

## Growth continued July – December 2018

### Central City Building & Resource Consents

Resource consent applications received (Jul-Dec)	Number	Building consent applications received (July-Dec)	Net New Housing (units)	Commercial Floorspace (sqm)
Landuse consents received within 4-Aves (excl. core)	36	Central City (South Frame)	0	0
Land Use Consents Received within Core	13	Central City Business	82	19,743
		Central City Mixed Use	57	9,034
		Central City Residential	15	3,290
<b>TOTAL</b>	<b>49</b>	<b>TOTAL</b>	<b>154</b>	<b>32,067</b>

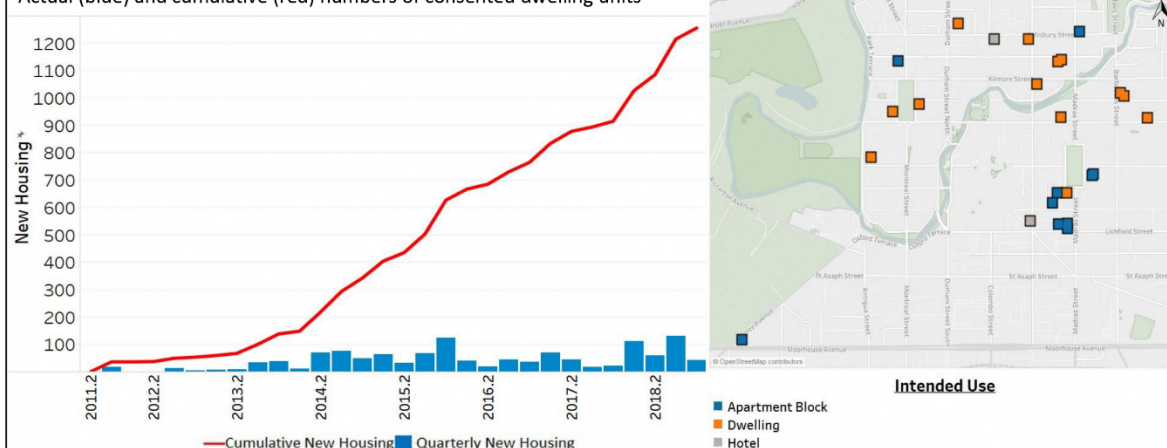
#### Key features during this time period

Within the July to December period, a number of large scale resource consent applications were received within the Central City Core. Key proposals include the conversion of the existing Peter Beaven office building at 159 Manchester Street into a hotel, the establishment of an 8 storey commercial and parking building at 92 Hereford Street and the establishment of a 10 storey hotel and apartment building at 64 Kilmore Street. A number of resource consent applications were also received for multi-unit residential developments within the four avenues. The largest of these applications was a 72 unit residential development at 118 Salisbury Street.

There have also been a number of new building consents lodged with the intended use of an apartment block. Most of these consents have increased the net new dwelling capacity of the land by intensification, the largest gain being a 39 unit development on Hagley Avenue (422 Hagley Avenue).

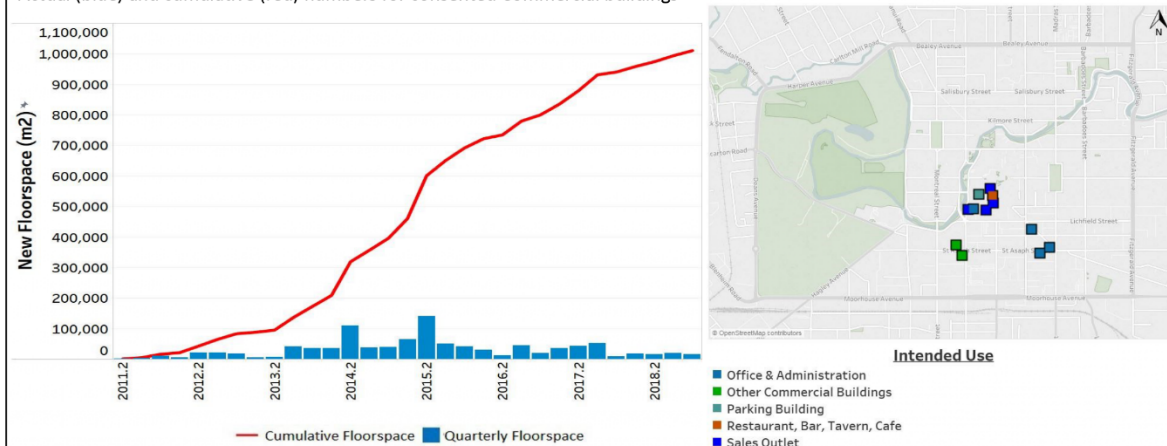
#### Residential Building consents (includes as part of mixed-use developments)

Actual (blue) and cumulative (red) numbers of consented dwelling units



#### Commercial Building consents (includes as part of mixed-use developments)

Actual (blue) and cumulative (red) numbers for consented Commercial buildings



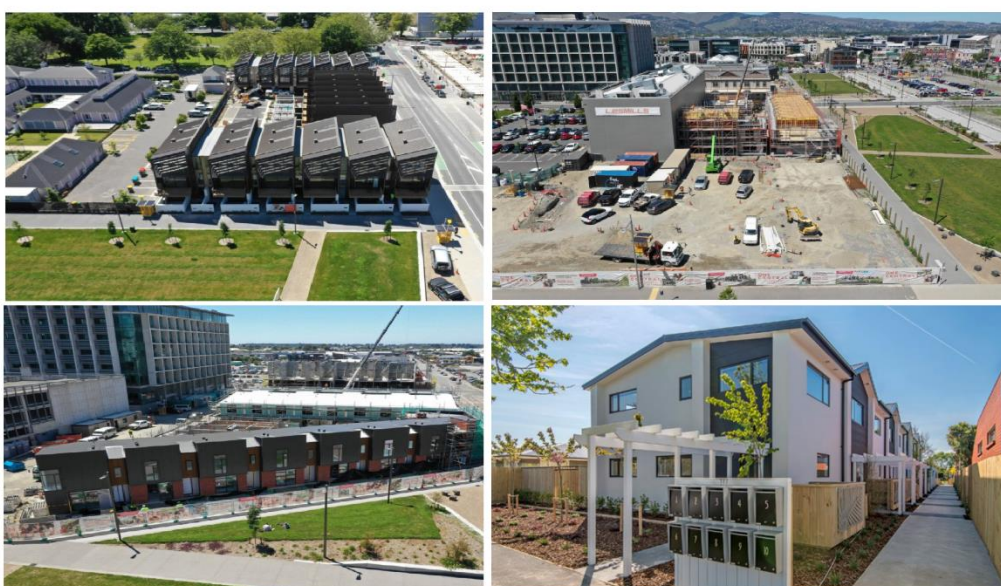


## People

### Project 8011

The Central City Residential Programme (Project 8011) was adopted by Council in September, 2018. Project 8011 is a component of the Central City Action Plan, aiming to grow the central city population to 20,000 over the next 10 years. Project 8011 is a programme consisting of nine initial projects which will be rolled out over the first three years (2019-21). The projects focus on both the supply and demand side of the Central City's housing market. Progress on the nine 8011 projects is outlined below.

Project Area	Code	Project Focus	Progress July– December period
Evidence base	A1	Develop evidence (research) base	Project scoping and planning underway.
Supporting the Central City offer	B1	Prioritise public realm maintenance/upkeep	Activity incorporated into Wider Central City Action Plan. Over the spring period excess cones, signage and traffic management equipment was removed and a full clean
	B2	Funding opportunities and incentives	Presentation made to the Central City Development Forum (November 2018). Research undertaken into options. Report on preferred options planned for March 2019.
	B3	Provide a residential service	A dedicated central city housing service is being scoped as part of the Central City Office.
	B4	Market the Central City	Project scoping and planning underway.
Bringing diversity and innovation to housing delivery	C1	Support alternative housing approaches and projects	Project scoping and planning underway.
Growing the pipeline of residential development sites	D1	Identify site development opportunities	Central City Survey mapping has provided a base to explore land use change. DCL update to Development Intentions mapping will add finer grained detail to identify site clusters.
	D2	Undertake site investigation, evaluation and feasibility	Project scoping and planning underway.
Improving the investment proposition of neighbourhoods	E1	Neighbourhood level planning and engagement	Project scoping and planning underway.



## People continued (July– December 2018)

### Events Programme

Within the July – December period a number of major and community events were produced within the Central City. Key Council produced events included Botanic D' Lights which attracted 136,200 attendees and the New Years Eve party which attracted 11,000 attendees (see table below).

The Council—sponsored FESTA (festival of architecture, design and food) attracted 15,000 attendees and the opening of the Central City Tūranga library drew 12,900 attendees.

**Note:** this report does not include the events run by other agencies such as Christchurch NZ or those that are reported elsewhere. For Christchurch NZ events refer to <https://www.christchurchnz.org.nz/events/>

Event Name	Event Date	Event Attendance
Crusaders Civic Welcome	06/08/2018	3000
House of Travel Botanic D'Lights	10/08/2018	136,200
Kids in Town (various 1 day events)	August-November	Various
Heritage Week Launch	12/10/2018	100
Suffrage series at the Arts Centre	16/10/2018	300
New Years Eve	31/12/2018	11,000
FESTA (Council Sponsored)	20/10/2018	15,000



### Marketing and Promotions

**Note:** this report does not include the activity of central city hosts, central city wayfinding, mini-maps, banners, Findchch website or Central City Facebook which are all now the responsibility of ChristchurchNZ.

**Central City Promotions Group** continue to meet regularly to look at joint projects, sharing resources, and aligning campaigns with the timing of key central city events. Membership includes various Council teams, Christchurch NZ, Ōtākaro Ltd, DPMC, Regenerate Christchurch, The Arts Centre, Central City Business Association and Environment Canterbury.

**Council-led 'Explore' campaign**— a multi-channel campaign launched in early Nov 2018 to Mar 2019. Aimed at encouraging people back into the central city by providing helpful information about how to get in-and-around, and where to park. The high level theme – explore the central city – was supported by targeted messaging: walk easy, park easy, bus easy.

Over the duration of the campaign, the combined web page views were on average 430 per day. During the initial period there have been 23,765 unique page views for central city and travel information.

explorecool

parkeasy

Choose from thousands of car parks in town  
[ccc.govt.nz/centralcity](http://ccc.govt.nz/centralcity)

buseasy

Take the bus to the Interchange in the heart of the town.  
[ccc.govt.nz/centralcity](http://ccc.govt.nz/centralcity)



## Getting it Done

### Delivery of Major Projects

The second half of 2018 has marked a blossoming of the Central City with a number of key developments and public spaces being brought into use.

Tūranga, the new Central Library, along with the EntX Cinema complex have given impressive new reasons for people to come into the Central City. Coinciding with the arrival of spring, these attractions have seen an increase in pedestrian footfall and consequential pickup in retail and hospitality spending.

Another important part of the public realm, the City Promenade was officially opened in November, creating a valuable corridor of open spaces extending from the Hospital / Health Precinct in the west to the Margaret Mahy playground in the east. Linking together the Oi Manawa Canterbury Earthquake Memorial, Cashel Mall and Victoria Square/Town Hall, this is an important addition to the city's sense of place and character.

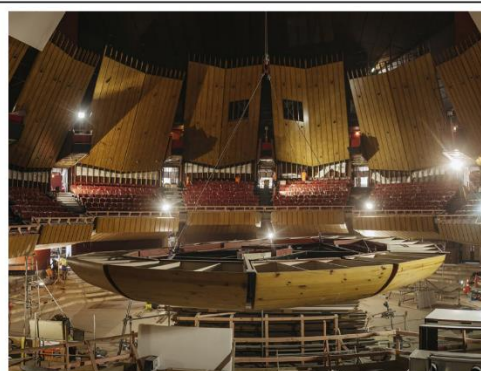
The first half of 2019 will see two important additions with the Town Hall and the Riverside Farmers Market set for completion by April. The city's prime performance venue will recapture a significant volume of visitors and the Farmers Market is set to bring a new dimension to the retail precinct that can only help to differentiate the Central City's offer from that of the suburban malls.



### Project Pipeline for 2019

Activity	Who	When
<b>Major Public Facilities and Buildings</b>		
Ao Tawhiti Unlimited Discovery School	Ministry of Education	Autumn 2019
Christchurch Town Hall	CCC	Autumn 2019
Durham Street Methodist Church	Methodist Church	Spring 2019
Edmonds Band Rotunda	CCC	Summer 2019/20
<b>Selected Commercial/Attraction Projects</b>		
Riverside Farmers Market	Peebles Group	Summer 2018/19
Guthrey Centre	Peebles Group	Summer 2018/19
Ballantynes Redevelopment	Ballantynes	Autumn 2019
Lower High Street - Duncan's Buildings	Peebles Group	Autumn 2019
Spark Building	Nexus Point Ltd	Spring 2019
<b>Public Realm</b>		
Avon River Precinct – Avon Loop	Ōtākaro Ltd	Winter 2019
South Frame	Ōtākaro Ltd	Winter 2020

(Dates above are correct at October 2018 based on direct or best available sources)





## 8. Resolution to Exclude the Public

*Section 48, Local Government Official Information and Meetings Act 1987.*

I move that the public be excluded from the following parts of the proceedings of this meeting, namely items listed overleaf.

Reason for passing this resolution: good reason to withhold exists under section 7.

Specific grounds under section 48(1) for the passing of this resolution: Section 48(1)(a)

### Note

Section 48(4) of the Local Government Official Information and Meetings Act 1987 provides as follows:

“(4) Every resolution to exclude the public shall be put at a time when the meeting is open to the public, and the text of that resolution (or copies thereof):

- (a) Shall be available to any member of the public who is present; and
- (b) Shall form part of the minutes of the local authority.”

This resolution is made in reliance on Section 48(1)(a) of the Local Government Official Information and Meetings Act 1987 and the particular interest or interests protected by Section 6 or Section 7 of that Act which would be prejudiced by the holding of the whole or relevant part of the proceedings of the meeting in public are as follows:

ITEM NO.	GENERAL SUBJECT OF EACH MATTER TO BE CONSIDERED	SECTION	SUBCLAUSE AND REASON UNDER THE ACT	PLAIN ENGLISH REASON	WHEN REPORTS CAN BE RELEASED
9	PUBLIC EXCLUDED INNOVATION AND SUSTAINABLE DEVELOPMENT COMMITTEE MINUTES - 10 DECEMBER 2018			REFER TO THE PREVIOUS PUBLIC EXCLUDED REASON IN THE AGENDAS FOR THESE MEETINGS.	
10	INNOVATION AND SUSTAINABILITY FUND	S6(A)	MAINTENANCE OF THE LAW	POINTS TO BE DISCUSSED ARE COMMERCIALY SENSITIVE	ONCE THERE IS NO LONGER ANY COMMERCIAL SENSITIVITY RELATING TO ANY OF THE APPLICATIONS