



Waipapa Papanui-Innes-Central Community Board AGENDA

Notice of Meeting:

An ordinary meeting of the Waipapa Papanui-Innes-Central Community Board will be held on:

Date: Thursday 11 April 2024
Time: 4 pm
Venue: Board Room, Papanui Service Centre,
Corner Langdons Road and Restell Street, Papanui

Membership

Chairperson	Emma Norrish
Deputy Chairperson	Simon Britten
Members	Pauline Cotter
	Sunita Gautam
	Victoria Henstock
	Ali Jones
	Jake McLellan
	John Miller
	Emma Twaddell

5 April 2024

Principal Advisor

Emma Pavey
Manager Community Governance,
Papanui-Innes-Central
Tel: 941 5107

Mark Saunders
Community Board Advisor
941 6436
mark.saunders@ccc.govt.nz
www.ccc.govt.nz

Note: The reports contained within this agenda are for consideration and should not be construed as Council policy unless and until adopted. If you require further information relating to any reports, please contact the person named on the report.

To watch the meeting live, or a recording after the meeting date, go to:

<https://www.youtube.com/channel/UCuRzshsY8rjDJYUymoYeQtA>

To view copies of Agendas and Minutes, go to:

<https://www.ccc.govt.nz/the-council/meetings-agendas-and-minutes/>



What is important to us?

Our Strategic Framework is a big picture view of what the Council is aiming to achieve for our community

Our focus this Council term 2022–2025

Strategic Priorities



Be an inclusive and equitable city which puts people at the centre of developing our city and district, prioritising wellbeing, accessibility and connection.



Champion Ōtautahi-Christchurch and collaborate to build our role as a leading New Zealand city.



Build trust and confidence in the Council through meaningful partnerships and communication, listening to and working with residents.

Adopted by the Council on 5 April 2023



Reduce emissions as a Council and as a city, and invest in adaptation and resilience, leading a city-wide response to climate change while protecting our indigenous biodiversity, water bodies and tree canopy.



Manage ratepayers' money wisely, delivering quality core services to the whole community and addressing the issues that are important to our residents.



Actively balance the needs of today's residents with the needs of future generations, with the aim of leaving no one behind.

Our goals for this Long Term Plan 2024–2034

Draft Community Outcomes



Collaborative and confident

Our residents have the opportunity to actively participate in community and city life, have a strong sense of belonging and identity, and feel safe.



Green and liveable

Our neighbourhoods and communities are accessible and well connected, supporting our goals to reduce emissions, build climate resilience and protect and regenerate the environment, especially our biodiversity, water bodies and tree canopy.

To be adopted by the Council as part of the Long Term Plan 2024–2034



A cultural powerhouse

Our diverse communities are supported to understand and protect their heritage, pursue their arts, cultural and sporting interests, and contribute to making our city a creative, cultural and events 'powerhouse'.



Thriving and prosperous

Our city is a great place for people, business and investment where we can all grow our potential, where enterprises are innovative and smart, and where together we raise productivity and reduce emissions.

Our intergenerational vision

A place of opportunity for all.

Open to new ideas, new people,
new investment and new ways
of doing things – a place where
anything is possible.



Ngāi Tahu has rangatiratanga over its takiwā – the Council is committed to partnering with Ngāi Tahu to achieve meaningful outcomes that benefit the whole community

Part A	Matters Requiring a Council Decision
Part B	Reports for Information
Part C	Decisions Under Delegation

TABLE OF CONTENTS NGĀ IHIRANGI

Karakia Tīmatanga	4
C 1. Apologies Ngā Whakapāha	4
B 2. Declarations of Interest Ngā Whakapuaki Aronga	4
C 3. Confirmation of Previous Minutes Te Whakaāe o te hui o mua	4
B 4. Public Forum Te Huinga Whānui	4
B 5. Deputations by Appointment Ngā Huinga Whakaritenga.....	4
B 6. Presentation of Petitions Ngā Pākikitanga	4

STAFF REPORTS

C 7. Gambia Street / Grants Road / Rayburn Avenue intersection - Proposed no stopping restrictions	11
C 8. Papanui Primary School - Proposed Parking Changes	21
C 9. Chester Street East - Resident Permit Only and Angle Parking.....	27
C 10. Innes Road/Malvern Park Pedestrian Crossing - Proposed No Stopping Restrictions	35
C 11. Waipapa Papanui-Innes-Central - Better-Off Fund Applications for Consideration	41
C 12. Waipapa Papanui-Innes-Central 2023-24 Discretionary Response Fund Application- Edgeware Tennis Club Incorporated and Morrison Avenue Bowling Club (Inc)	55
C 13. Waipapa Papanui-Innes-Central Community Board Area Report - April 2024....	61
B 14. Elected Members' Information Exchange Te Whakawhiti Whakaaro o Te Kāhui Amorangi.....	77

Karakia Whakamutunga

Karakia Tīmatanga

Whakataka te hau ki te uru Whakataka te hau ki te tonga Kia mākinakina ki uta Kia mātaratara ki tai E hī ake ana te atakura He tio, he huka, he hauhūnga Tīhei Mauri Ora	Cease the winds from the west Cease the winds from the south Let the breeze blow over the land Let the breeze blow over the ocean Let the red-tipped dawn come with a sharpened air. A touch of frost, a promise of a glorious day.
--	---

1. Apologies Ngā Whakapāha

At the close of the agenda no apologies had been received.

2. Declarations of Interest Ngā Whakapuaki Aronga

Members are reminded of the need to be vigilant and to stand aside from decision making when a conflict arises between their role as an elected representative and any private or other external interest they might have.

3. Confirmation of Previous Minutes Te Whakaāe o te hui o mua

That the minutes of the Waipapa Papanui-Innes-Central Community Board meeting held on [Thursday, 14 March 2024](#) be confirmed (refer page 5).

4. Public Forum Te Huinga Whānui

A period of up to 30 minutes will be available for people to speak for up to five minutes on any issue that is not the subject of a separate hearings process.

4.1 Emma McKenzie

Emma McKenzie will speak as a local resident regarding speeding on Philpotts Road.

5. Deputations by Appointment Ngā Huinga Whakaritenga

Deputations may be heard on a matter or matters covered by a report on this agenda and approved by the Chairperson.

5.1 Jan Galloway

Jan Galloway will speak regarding Item 7, Gambia Street / Grants Road / Rayburn Avenue Intersection – Proposed no stopping restrictions.

6. Presentation of Petitions Ngā Pākikitanga

There were no petitions received at the time the agenda was prepared.



Waipapa
Papanui-Innes-Central Community Board
OPEN MINUTES

Date: Thursday 14 March 2024
Time: 4.02 pm
Venue: Board Room, Papanui Service Centre,
Corner Langdons Road and Restell Street, Papanui

Present

Chairperson	Emma Norrish
Deputy Chairperson	Simon Britten
Members	Pauline Cotter
	Sunita Gautam
	Victoria Henstock (via audiovisual link)
	Ali Jones
	Jake McLellan (via audiovisual link)
	John Miller
	Emma Twaddell

Principal Advisor

Emma Pavey
Manager Community Governance,
Papanui-Innes-Central
Tel: 941 5107

Mark Saunders
Community Board Advisor
941 6436

mark.saunders@ccc.govt.nz
www.ccc.govt.nz

To watch the meeting live, or a recording after the meeting date, go to:

<https://www.youtube.com/channel/UCuRzshsY8rjDJYUymoYeQtA>

To view copies of Agendas and Minutes, go to:

<https://www.ccc.govt.nz/the-council/meetings-agendas-and-minutes/>



- Part A** **Matters Requiring a Council Decision**
Part B **Reports for Information**
Part C **Decisions Under Delegation**
-

Karakia Tīmatanga

The agenda was dealt with in the following order.

1. Apologies Ngā Whakapāha

Part C

Community Board Resolved PCBCC/2024/00012

That the apology for potential early departure received from Victoria Henstock be accepted.

Sunita Gautam/John Miller

Carried

2. Declarations of Interest Ngā Whakapuaki Aronga

Part B

There were no declarations of interest recorded.

3. Confirmation of Previous Minutes Te Whakaāe o te hui o mua

Part C

Community Board Resolved PCBCC/2024/00013

That the minutes of the Waipapa Papanui-Innes-Central Community Board meeting held on Thursday, 15 February 2024 be confirmed.

Emma Twaddell/Emma Norrish

Carried

7. Joint Meeting of the Waipapa Papanui-Innes-Central and Waitai Coastal-Burwood-Linwood Community Boards Minutes - 13 February 2024

Community Board Resolved PCBCC/2024/00014

That the Waipapa Papanui-Innes-Central Community Board confirms the Minutes from the Joint Meeting of the Waipapa Papanui-Innes-Central and Waitai Coastal-Burwood-Linwood Community Boards held 13 February 2024.

Emma Twaddell/Emma Norrish

Carried

4. Public Forum Te Huinga Whānui

Part B

There were no public forum presentations.

5. Deputations by Appointment Ngā Huinga Whakaritenga

Part B

There were no deputations by appointment.

6. Presentation of Petitions Ngā Pākikitanga

Part B

There was no presentation of petitions.

8. Tree Planting in Cambridge Green and Marble Wood Reserve

Council Officers in attendance presented the attached presentation to the Board.

Community Board Resolved PCBCC/2024/00015 Officer recommendations accepted without change

Part C

That the Waipapa Papanui-Innes-Central Community Board:

1. Approve the planting of trees within Marble Wood Reserve as per the consulted plans.
2. Approve the planting of trees within Cambridge Green as per the consulted plans.

Pauline Cotter/Sunita Gautam

Carried

Attachments

- A Staff Presentation - Urban Forest Planting Program - Cambridge Green and Marble Wood Reserve

9. Waipapa Papanui-Innes-Central - Better-Off Fund Applications for Consideration

The resolutions for this item were voted on separately.

Community Board Resolved PCBCC/2024/00016 Officer recommendations accepted without change

Part C

That the Waipapa Papanui-Innes-Central Community Board:

1. Approves a grant of \$41,000 from its Better-Off Fund to St Albans Pavilion and Pool Incorporated (SAPP) towards the compliance, planning and contract costs associated with the building of the Edgeware Pool.

Pauline Cotter/Emma Twaddell

Carried

Ali Jones and Victoria Henstock requested that their votes against resolution 1 be recorded.

Community Board Resolved PCBCC/2024/00017 Officer recommendations accepted without change

2. Approves a grant of \$60,000 from its Better-Off Fund to Shirley Intermediate School towards the Shirley Intermediate School and Community Pool Project costs.

Sunita Gautam/Emma Norrish

Carried

10. Application to the 2023-24 Waipapa Papanui-Innes-Central Youth Development Fund - Alisa Wada

Community Board Resolved PCBCC/2024/00018 Officer recommendations accepted without change

Part C

That the Waipapa Papanui-Innes-Central Community Board:

1. Approves a grant of \$500 from its 2023-24 Youth Development Fund to Alisa Wada towards her travel costs and expenses as part of the New Zealand Gymnastics team at the Pacific Rim Gymnastics Championships in Cali, Colombia, in April 2024.

Sunita Gautam/Emma Norrish

Carried

11. Waipapa Papanui-Innes-Central 2023-2024 Discretionary Response fund Application - St Albans Residents Association

Community Board Resolved PCBCC/2024/00019 Officer recommendations accepted without change

Part C

That the Waipapa Papanui-Innes-Central Community Board:

1. Approves a grant of \$3,500 from its 2023-2024 Discretionary Response Fund to St Albans Residents Association (SARA) Inc towards the St Albans Community Website.

Sunita Gautam/Simon Britten

Carried

Emma Twaddell declared an interest in this Item 11 and took no part in the Board's discussion or voting on it.

12. Waipapa Papanui-Innes-Central Community Board Area Report - March 2024

Community Board Resolved PCBCC/2024/00020 Officer recommendations accepted without change

Part B

That the Waipapa Papanui-Innes-Central Community Board:

1. Receive the Waipapa Papanui-Innes-Central Community Board Area Report for March 2024.

Ali Jones/Pauline Cotter

Carried

13. Elected Members' Information Exchange Te Whakawhiti Whakaaro o Te Kāhui Amorangi

Part B

Board members exchanged information on their activities, including in relation to:

- Kohinga St Albans Community Centre.
- Discussions with local MP's office regarding matters for community policing team, and educating residents in mechanisms and relevance of reporting matters to the Police.
- Phillipstown Community Hub event around their pizza oven.
- Council adopting its Draft Long Term Plan 2024-34 for consultation, and drop-in sessions being offered in consultation period.
- Edmonds Factory Garden Party.
- Victoria Neighbourhood Association picnic evening.
- Linwood Village streetscape improvements.
- Discussions with local MP's office regarding emergency housing in the Board area.
- Board member participation in judging of Community Pride Awards.
- Community gardens bus tour highlighting the 75 community gardens in Canterbury.
- Upcoming briefing with Transport Managers.
- Mayor's Community Forum.
- Anniversary of March 15 terror attacks in the month of Ramadan.
- Unity week and the Unity Motorcycle Ride.
- LGNZ SuperLocal conference.
- Community Liaison Meeting attended by members.
- Community Board Chairpersons and Staff Forum, which included an update on the LTP Budget Tool.
- Correspondence between roadworks contractor for Vagues Road and St Joseph's School Principal to address communications around roadworks.

Pauline Cotter left the meeting at 4.53pm during consideration of item 13.

Karakia Whakamutunga

Meeting concluded at 5.15pm.

CONFIRMED THIS 11th DAY OF APRIL 2024

**EMMA NORRISH
CHAIRPERSON**

7. Gambia Street / Grants Road / Rayburn Avenue intersection - Proposed no stopping restrictions

Reference / Te Tohutoro: 24/336071

Report of / Te Pou Michael Thomson, Transport Network Planner,
Matua: Michael.thomson@ccc.govt.nz

Senior Manager / Jane Parfitt, Interim General Manager Infrastructure, Planning and
Pouwhakarae: Regulatory Services

1. Purpose and Origin of Report Te Pūtake Pūrongo

- 1.1 To seek approval for the proposed no stopping restrictions at the Gambia Street / Grants Road / Rayburn Avenue intersection.
- 1.2 Numerous requests have been received from a member of the public regarding vehicles parking close to the intersection.
- 1.3 The decisions in this report are of low significance in relation to the Christchurch City Council's Significance and Engagement Policy. The level of significance was determined by the low level of impact and low number of people affected by the recommended decision.
- 1.4 The community engagement and consultation outlined in this report reflect the assessment.
- 1.5 The recommended option is to install no stopping restrictions in accordance with Attachment A.

2. Officer Recommendations Ngā Tūtohu

That the Waipapa Papanui-Innes-Central Community Board:

1. Approves that any previously approved resolutions be revoked , in accordance with Clause 6 (2) of the Christchurch City Council Traffic & Parking Bylaw 2017, on Gambia Street, Grants Road and Rayburn Avenue pertaining to parking and /or stopping restrictions, made pursuant to any Bylaw, Local Government Act, or any Land Transport Rule, to the extent that they are in conflict with the parking and /or stopping restrictions described in recommendation 2. below.
2. Approves, pursuant to Clause 7 of the Christchurch City Council Traffic and Parking Bylaw 2017 and as shown on Attachment A:
 - a. That the stopping of vehicles be prohibited at any time on the south-west side of Gambia Street from its intersection with Grants Road and extending in a north-westerly direction for a distance of 23 metres.
 - b. That the stopping of vehicles be prohibited at any time on the north-east side of Gambia Street from its intersection with Grants Road and extending in a north-westerly direction for a distance of 31 metres.
 - c. That the stopping of vehicles be prohibited at any time on the north-west side of Grants Road from its intersection with Gambia Street and extending in a north-easterly direction for a distance of 15 metres.
 - d. That the stopping of vehicles be prohibited at any time on the south-east side of Grants Road from its intersection with Rayburn Avenue and extending in a north-easterly direction for a distance of 30 metres.

- e. That the stopping of vehicles be prohibited at any time on the north-east side of Rayburn Avenue from its intersection with Grants Road and extending in a south-easterly direction for a distance of 14 metres.
 - f. That the stopping of vehicles be prohibited at any time on the south-west side of Rayburn Avenue from its intersection with Grants Road and extending in a south-easterly direction for a distance of 14 metres.
 - g. That the stopping of vehicles be prohibited at any time on the south-east side of Grants Road from its intersection with Rayburn Avenue and extending in a south-westerly direction for a distance of 15 metres.
 - h. That the stopping of vehicles be prohibited at any time on the north-west side of Grants Road from its intersection with Gambia Street and extending in a south-westerly direction for a distance of 30 metres.
3. Approves that these resolutions take effect when parking signage and/or road marking that evidence the restrictions described in the staff report are in place (or removed in the case of revocations).

3. Reason for Report Recommendations Ngā Take mō te Whakatau

- 3.1 To ensure that the intersection is unobstructed to allow for visibility and vehicle turning movements especially due to the high demand for parking in the area.
- 3.2 The extent of the no stopping restrictions proposed ensures that the resultant parking areas do not create spaces where an additional vehicle may try to park and inadvertently protrude into the traffic lane, obstruct a vehicle crossing or park on a grass berm to avoid protruding into the traffic lane.
- 3.3 The proposed no stopping restrictions at the intersection will also assist the Parking Compliance Team due to less call-outs and ease of enforcement due to the presence of the no stopping lines.

4. Alternative Options Considered Ētahi atu Kōwhiringa

- 4.1 Maintain the status quo – Do Nothing.
- 4.2 The advantage with this option is that it will not incur any cost associated with the road markings and the Stop signs including its ongoing maintenance cost.
- 4.3 The disadvantages of this option include:
 - 4.3.1 Does not address the community concerns with visibility at the intersection.
 - 4.3.2 There will likely be an increase in parking demand in the area due to the redevelopment of some of the properties to higher density living and with the proximity of a school, there may be more motorists parking in the proposed no stopping areas which will restrict visibility at the intersection.

5. Detail Te Whakamahuki

- 5.1 A member of the community has contacted the Council on a number of occasions requesting no stopping restrictions to improve the visibility at the intersection.
- 5.2 In the last five years, the Council had received:

- Eight complaints regarding vehicles parking either on the grass berm, footpath or for blocked vehicle entrance between #2 and #8 Gambia Street.
 - Three complaints regarding vehicles parked on grass berm at 47 Grants Rd.
- 5.3 From the NZ Transport Agency National Speed Limit Register (NSLR), Gambia St / Grants Rd / Rayburn Avenue intersection has a speed limit of 30 km/h from 10/2/2023.



Figure 1: National Speed Limit Register of Gambia Street / Grants Road / Rayburn Avenue intersection

- 5.4 There have been no reported crashes recorded in the NZ Transport Agency Crash Analysis System (CAS) as of 11 March 2024 in the last 5 years. However, one of the submitters advised that there was a crash in January 2024 involving a vehicle turning onto Gambia Street from Grants Road which collided with parked vehicles outside #4 Gambia Street.
- 5.5 The extent of the no stopping restrictions on Gambia Street is proposed at the point where Gambia Street starts to narrow and its alignment changes as it approaches Grants Road. The no stopping restrictions on Grants Road and Rayburn Avenue are proposed at the point generally where the kerb build-outs commence.
- 5.6 The decision affects the following wards/Community Board areas:
- 5.6.1 Waipapa Papanui-Innes-Central.

Community Views and Preferences

- 5.7 Consultation documents were mailed out to the directly affected property owners/residents. The consultation catchment area is shown in Figure 2 and the consultation period was from 11 to 31 January 2024.



Figure 2: Gambia St/Grants Rd/Rayburn Ave intersection, proposed no stopping – consultation catchment area

- 5.8 Four submissions were received on the proposal and two submissions supported the proposal. One of the submissions for support had also suggested two changes. Staff responses to these are included below to the submitter's suggestions.

- *To extend the proposed no stopping lines 6 metres (1 car length) down the west side of Gambia street. This is because of the problem with sightlines for traffic turning left from Grants Road into Gambia street...if a car is parked there, it is impossible to see oncoming traffic.*

There is adequate sight line for northbound traffic on Gambia Street from the Grants Road intersection to see oncoming traffic. Traffic turning left from Grants Road into Gambia Street may need to stop behind the parked vehicle to check for oncoming traffic but this is not uncommon on local roads with parking on both sides of the road. However, with the removal of parking beside #1/4 Gambia Street, there is sufficient road width for 2-way traffic.

- *To have a limited parking time at school drop off times as parents of students at the Adventist school around the corner use the street to drop off and pick up young people.*

This will be investigated as part of a separate project and we will work with the Adventist School to determine if there is a need for this.

- 5.9 Two submissions objected to the proposal due to the loss of parking. One of the submitters suggested alternative solutions which are included below along with staff responses.

- *"...I would propose as an alternate solution the painting of a white L on the road to indicate the safe parking distance from the drive to prevent this.*

As a second alternative - I note that the road contour in Gambia is different from Grants and Rayburn in that the curvature is more gradual in front of 4 Gambia and a narrow wood chip "garden" uses some of the parking width. Replicating the contour with that in the other streets and removal of the narrow redundant garden could provide less of a bottle neck while maintaining the traffic speed reduction effect and parking in Gambia St.

There is already a rule which prohibits vehicles from parking within 1 metre of a driveway and this is managed through our Parking Compliance Team. We receive a large number of these requests and it is impractical for the Council to install and maintain parking ticks at all the private driveways that request them.

As to the submitter's second alternative suggestion, there is limited funding and it is not practical and cost-effective to use the funds to re-align the road to accommodate two additional parking spaces in this area.

- 5.10 One of the other submitters that objected to the proposal stated a number of reasons on their objections to the loss of parking. The submitter's comments are included below along with staff responses.

- *"This is the most ridiculous idea I have ever heard. The impact that this will have on residents won't be positive, it will be negative. You are going to stop residents from parking outside of their houses and result in them parking around the road. Are you not aware of the high crimes rates we have at the moment? The reason why people like their cars close to their houses is so they can keep an eye on them for safety, if it's around the corner, how are we meant to know if someone steals it?"*

No only my point above, you are then going to make it difficult for people to rent out their houses if they have no street parking outside of their house. Considering we are already in a housing crisis you are then going to make the situation worse.

If anything needs to happen, you need to put stop signs on Gambia Street and Rayburn Ave. Putting 'no stopping' zones in is not going to improve the situation at all.

There is always pressure for road space and although in the majority of suburban streets, a large proportion of the road space is currently allocated for parking but this may not necessary be the same in the future. In accordance with the Christchurch Suburban Parking Policy, road space will be prioritised in the following order and in the following areas:

	Commercial Areas	Residential Areas	Other Areas (such as Industrial)
1st priority	Safety	Safety	Safety
2nd priority*	Movement and Amenity	Movement and Amenity	Movement and Amenity
3rd priority	Mobility Parking	Mobility Parking	Mobility Parking
4th priority	Bus stops/ Cycle parks/Bike corrals Shared parking (bike share or car share)/ Micromobility parking (e.g. scooters)	Bus Stops	Bus stops/ Cycle parks/ Bike corrals Shared parking (bike share or car share)/ Micromobility parking (e.g. scooters)
5th priority	Taxi Ranks (special passenger vehicle stands)	Residents Parking	Short Stay Parking
6th priority	Loading Zones	Cycle parks/ Bike corrals Shared parking (bike share or car share)/ Micromobility parking (e.g. scooters)	Residents Parking
7th priority	Short Stay Parking	Short Stay Parking	Commuter Parking
8th priority	Residents Parking	Commuter Parking	
9th priority	Commuter Parking		

Staff have assessed the requirement for a Stop Control at this location using appropriate guidance in Austroads and it does not meet the criteria for a Stop Control.

6. Policy Framework Implications Ngā Hīraunga ā- Kaupapa here

Strategic Alignment Te Rautaki Tīaroaro

- 6.1 Council's strategic priorities have been considered in formulating the recommendations in this report, however this area of work is not specifically covered by an identified priority.
- 6.2 This report supports the [Council's Long Term Plan \(2021 - 2031\)](#):
- 6.3 Transport
 - 6.3.1 Activity: Transport
 - Level of Service: 10.3.3 Maintain customer perception of the ease of use of Council on- street parking facilities - >=50% resident satisfaction

Policy Consistency Te Whai Kaupapa here

- 6.4 The recommendations in this report are consistent with the Christchurch Suburban Parking Policy. Allocating the road space which includes no stopping restrictions for safety and movement are the 1st and 2nd priority for roads in a residential area. Residents parking is 5th in the order of priority.

Impact on Mana Whenua Ngā Whai Take Mana Whenua

- 6.5 The decision does not involve a significant decision in relation to ancestral land or a body of water or other elements of intrinsic value, therefore this decision does not specifically impact Mana Whenua, their culture and traditions.
- 6.6 The decision does not involve a matter of interest to Mana Whenua and will not impact on our agreed partnership priorities with Ngā Papatipu Rūnanga.

Climate Change Impact Considerations Ngā Whai Whakaaro mā te Āhuarangi

- 6.7 The proposal in this report is unlikely to contribute significantly to adaptation to the impacts of climate change or emissions reductions.

Accessibility Considerations Ngā Whai Whakaaro mā te Hunga Hauā

- 6.8 This proposal improves accessibility for drivers by providing a safer means of access at the intersection with improved visibility and vehicle turning movements especially due to the high demand of parking in the area.

7. Resource Implications Ngā Hīraunga Rauemi

Capex/Opex Ngā Utu Whakahaere

- 7.1 Cost to Implement – approximately \$900 for the no stopping lines and \$1,500 for the investigation and preparation of this report.
- 7.2 Maintenance/Ongoing costs - to be covered by the area maintenance contract (approximately \$900 annually).
- 7.3 Funding Source - Traffic Operations Team Traffic Signs and Markings budget (2023/24).

Other He mea anō

- 7.4 None identified.

8. Legal Implications Ngā Hīraunga ā-Ture

Statutory power to undertake proposals in the report Te Manatū Whakahaere Kaupapa

- 8.1 Part 1, Clause 7 of the Christchurch City Council Traffic and Parking Bylaw 2017 provides Council with the authority to install parking restrictions by resolution.
- 8.2 Clause 6(2) of the Christchurch City Council Traffic and Parking Bylaw 2017 provides Council with the authority to amend or revoke any resolution made under this bylaw at any time.
- 8.3 The installation of any signs and/or markings associated with traffic control devices must comply with the Land Transport Rule: Traffic Control Devices 2004.

Other Legal Implications Ētahi atu Hīraunga-ā-Ture

- 8.4 There is no other legal context, issue, or implication relevant to this decision.


9. Risk Management Implications Ngā Hīraunga Tūraru

- 9.1 None identified.

10. Next Steps Ngā Mahinga ā-muri

- 10.1 If approved, the recommendations will be implemented within the current financial year (generally around four weeks after the contractor receives the request, but this is subject to other factors such as resourcing and prioritisation beyond Council's control).

Attachments Ngā Tāpirihanga

No.	Title	Reference	Page
A 	Gambia St / Grants Rd / Rayburn Ave intersection - Proposed no stopping restrictions - TG146887 - for Board approval	24/361086	19

In addition to the attached documents, the following background information is available:

Document Name - Location / File Link
Not applicable

Confirmation of Statutory Compliance Te Whakatūtutanga ā-Ture

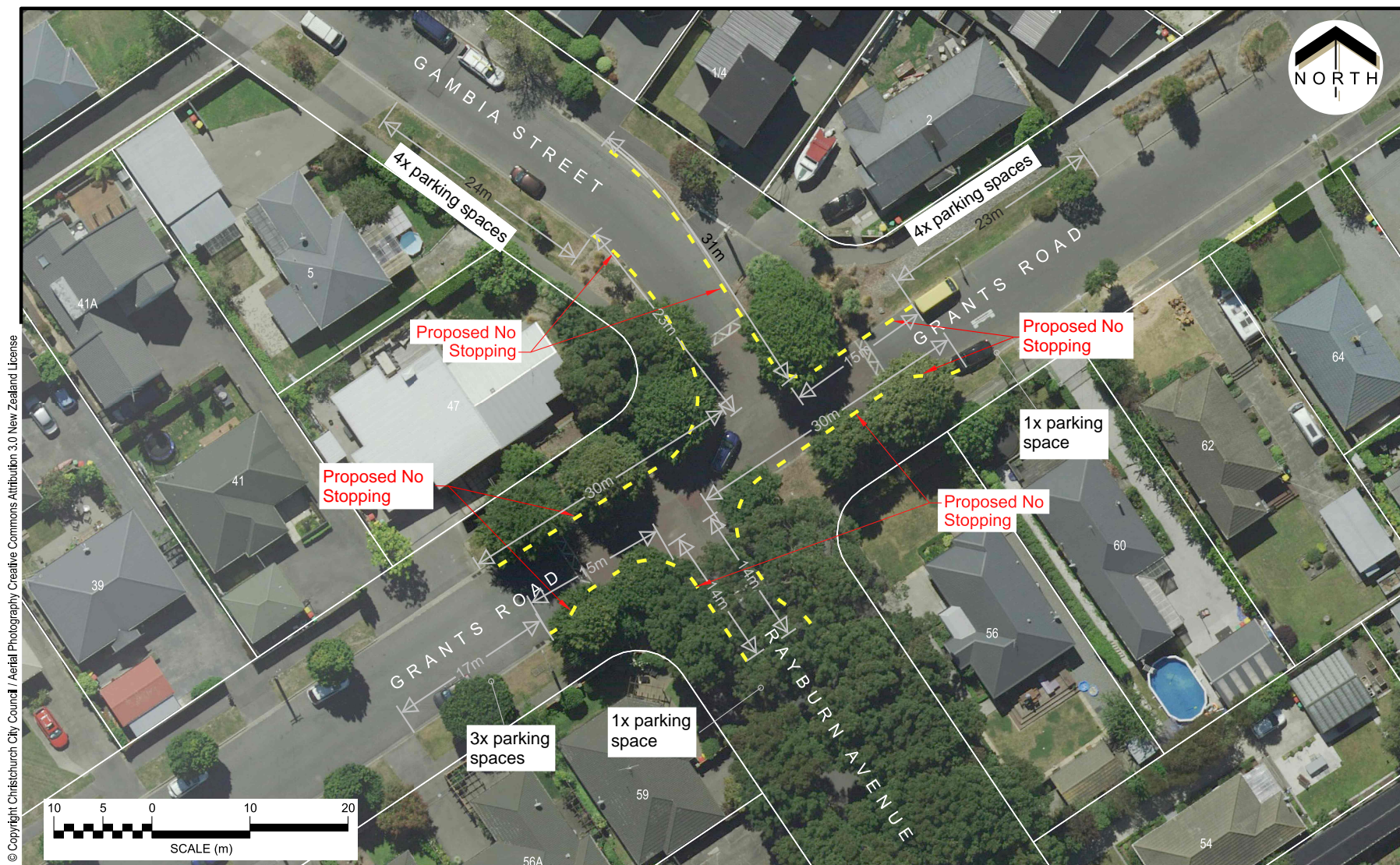
Compliance with Statutory Decision-making Requirements (ss 76 - 81 Local Government Act 2002).

- (a) This report contains:
 - (i) sufficient information about all reasonably practicable options identified and assessed in terms of their advantages and disadvantages; and
 - (ii) adequate consideration of the views and preferences of affected and interested persons bearing in mind any proposed or previous community engagement.
- (b) The information reflects the level of significance of the matters covered by the report, as determined in accordance with the Council's significance and engagement policy.

Signatories Ngā Kaiwaitohu

Authors	Patricia Su - Passenger Transport Engineer Michael Thomson - Transport Engineer
Approved By	Katie Smith - Team Leader Traffic Operations Stephen Wright - Manager Operations (Transport)

Item 7



Christchurch
City Council

Gambia Street, Grants Road, Rayburn Avenue
Proposed No Stopping Restrictions
For Board Approval

Attachment A

Original Plan Size: A4

Drawn: VMI Issue 1 04/12/2023
Designed: PS Drawing: TG146887
Approved: LB Project:

8. Papanui Primary School - Proposed Parking Changes

Reference / Te Tohutoro: 23/1777970

Report of / Te Pou
Matua: Michael Thomson, Transport Engineer,
michael.thomson@ccc.govt.nz

Senior Manager /
Pouwhakarae: Jane Parfitt, Interim General Manager Infrastructure, Planning and
Regulatory Services

1. Purpose and Origin of Report Te Pūtake Pūrongo

- 1.1 The purpose of this report is to seek approval of the proposed parking changes around Papanui Primary School on Winters Road and Fraser Street.
- 1.2 This report has been written in response to a request from the school for Council to consider options to improve the safety and efficiency near the school patrol crossing and main school gate during the school pick up and drop off times.
- 1.3 The decisions in this report are of low significance in relation to the Christchurch City Council's Significance and Engagement Policy. The level of significance was determined by the low level of impact and low number of people affected by the recommended decision.

2. Officer Recommendations Ngā Tūtohu

That the Waipapa Papanui-Innes-Central Community Board:

1. Approves that any previously approved resolutions be revoked , in accordance with Clause 6 (2) of the Christchurch City Council Traffic & Parking Bylaw 2017, on both sides of Fraser Street from its intersection with Cranford Street, and extending in a north-easterly direction to its intersection with Winters Road, pertaining to parking and /or stopping restrictions, made pursuant to any Bylaw, Local Government Act, or any Land Transport Rule, to the extent that they are in conflict with the parking and /or stopping restrictions described in recommendation 3 below.
2. Approves that any previously approved resolutions be revoked , in accordance with Clause 6 (2) of the Christchurch City Council Traffic & Parking Bylaw 2017, on Winters Road from its intersection with Fraser Street, and extending in a south-easterly direction for a distance of 127 metres, pertaining to parking and /or stopping restrictions, made pursuant to any Bylaw, Local Government Act, or any Land Transport Rule, to the extent that they are in conflict with the parking and /or stopping restrictions described in recommendation 3. below.
3. Approves, pursuant to Clause 7 of the Christchurch City Council Traffic and Parking Bylaw 2017 and as shown on Attachment A:
 - a. That the stopping of vehicles be prohibited at any time on the western side of Fraser Street from its intersection with Cranford Street and extending in a north-easterly direction for a distance of 34 metres.
 - b. That the stopping of vehicles be prohibited at any time on the eastern side of Fraser Street from its intersection with Cranford Street and extending in a north-easterly direction for a distance of 23 metres.
 - c. That the stopping of vehicles be prohibited at any time on the eastern side of Fraser Street from its intersection with Winters Road and extending in a south-westerly direction for a distance of 13 metres.

- d. That the stopping of vehicles be prohibited at any time on the north-east side of Winters Road commencing at a point 98 metres south-east of its intersection with Fraser Street and extending in a south-easterly direction for a distance of 29 metres.
- e. That the stopping of vehicles be prohibited at any time on the south-west side of Winters Road from its intersection with Fraser Street and extending in a south-easterly direction for a distance of 13 metres.
- f. That the parking of vehicles be restricted to a maximum period of three minutes between the times of 8.15am to 9.15am and 2.30pm to 3.30pm, school days only on the south-west side of Winters Road commencing at a point 39 metres south-east of its intersection with Fraser Street and extending in a south-easterly direction for a distance of 54 metres.
- g. That the stopping of vehicles be prohibited at any time on the south-west side of Winters Road commencing at a point 93 metres south-east of its intersection with Fraser Street and extending in a south-easterly direction for a distance of 26 metres.
4. Approves pursuant to Clause 6(2) of the Christchurch City Council Traffic & Parking Bylaw 2017 that the parking of vehicles be restricted to a maximum period of three minutes between the times of 8.30am to 9.30am and 2.30pm to 3.30pm, school days only on the south side of Fraser Street commencing at a point 13 metres south of its intersection with Winters Road and extending in a southerly direction for a distance of 47 metres be revoked.
5. Approves that these resolutions take effect when parking signage and/or road marking that evidence the restrictions described in the staff report are in place (or removed in the case of revocations).

3. Reason for Report Recommendations Ngā Take mō te Whakatau

- 3.1 Safety concerns have been raised by staff at Papanui Primary School about congestion and parking behaviour near the School Patrol crossing on Winters Road. The school requested that the P3 parking be relocated from Fraser Street to Winters Road.
- 3.2 This has been investigated and a proposal has been developed to relocate the P3 parking from Fraser Street to Winters Road. The relocated P3 restrictions will affect one additional on-street car park to avoid the bend warning sign, parking restrictions will apply between the hours of 8.15am - 9.15am and 2.30pm - 3.30pm.
- 3.3 Vehicles are parking beside 43 Winters Road in the space between the vehicle crossing and the school patrol kerb build out. The available length is insufficient to accommodate most vehicles and often results in either cars overhanging the driveway or being parked too close to the school crossing thereby reducing visibility at the crossing. It is proposed that the existing no stopping restrictions from the school patrol kerb build-out be extended to the driveway of 43 Winters Road.
- 3.4 Options within this report have been assessed against the Council's Suburban Parking Policy which prioritises safety and short term parking over residents and commuter parking.

4. Alternative Options Considered Ētahi atu Kōwhiringa

- 4.1 Maintain the status quo – Do Nothing
- 4.2 The advantages of this option include:
 - 4.2.1 Retain one additional unrestricted parking space on street.

- 4.3 The disadvantages of the option include:
- 4.3.1 Does not address the identified safety issue relating to traffic congestion and the management of on-street parking during peak periods near the school patrol.
 - 4.3.2 Does not provide an accessible pick up /drop off area for students at the school's main gate.

5. Detail Te Whakamahuki

- 5.1 Winters Road is one of three locations where students can enter Papanui Primary School. There are two pedestrian accesses on Winters Road and one on Fraser Street.
- 5.2 The school has advised that the demand for pick up/drop off is on Winters Road and the P3 parking restriction on Fraser Street is not well utilised as it is located further away from the school's main gate. The proposed P3 parking restrictions is located close to the school's main gate.
- 5.3 The proposal is intended to provide higher turnover of parking near the school's main gate to reduce the congestion near the school patrol crossing whilst drivers are searching/waiting for a park. The proposed P3 parking restriction provides enough time for drivers to stop and students to be picked up or dropped off, but not enough time for drivers to park and leave their vehicle.
- 5.4 The decision affects the following wards/Community Board areas:
- 5.4.1 Waipapa Papanui-Innes-Central Community Board.

Community Views and Preferences

- 5.5 The directly affected property owner of the proposed no stopping restriction was advised of the recommended option by letter. The property owner supports the proposal and provided the following feedback:
- *Your solution would really help as often cars even stop or turn into our driveway to allow their children to be picked up/dropped off for school so this would help.*
It would also increase visibility for the Parent/s and Traffic Warden Students if there was no car parked where they can currently.
- 5.6 The proposal was also emailed to the school and the School confirmed their support for the proposal.
- 5.7 The Team Leader Parking Compliance supports the preferred option.
- 5.8 This report also takes the opportunity to reconfirm by resolution the existing no stopping lines around the intersections of Cranford Street, Fraser Street, Winters Road and by the school crossing for clarity. These have not been consulted upon given they are existing and no other changes are proposed.

6. Policy Framework Implications Ngā Hiraunga ā- Kaupapa here

Strategic Alignment Te Rautaki Tīaroaro

- 6.1 Council's strategic priorities have been considered in formulating the recommendations in this report, however this area of work is not specifically covered by an identified priority.
- 6.2 This report supports the [Council's Long Term Plan \(2021 - 2031\)](#):
- 6.3 Transport
- 6.3.1 Activity: Transport

- Level of Service: 10.3.3 Maintain customer perception of the ease of use of Council on- street parking facilities - $\geq 50\%$ resident satisfaction
- Level of Service: 10.7.1 Delivery of travel planning programmes to schools, workplaces and communities - ≥ 26 organisations/schools (or 6,200 participants)
- Level of Service: 10.5.1 Limit deaths and serious injury crashes per capita for cyclists and pedestrians - ≤ 12 crashes per 100,000 residents

Policy Consistency Te Whai Kaupapa here

- 6.4 The decision is consistent with Council's Plans and Policies. It is consistent with the Christchurch Suburban Parking Policy.

Impact on Mana Whenua Ngā Whai Take Mana Whenua

- 6.5 The decision does not involve a significant decision in relation to ancestral land or a body of water or other elements of intrinsic value, therefore this decision does not specifically impact Mana Whenua, their culture and traditions.
- 6.6 The decision does not involve a matter of interest to Mana Whenua and will not impact on our agreed partnership priorities with Ngā Papatipu Rūnanga.

Climate Change Impact Considerations Ngā Whai Whakaaro mā te Āhuarangi

- 6.7 The proposals in this report are unlikely to contribute significantly to adaptation to the impacts of climate change or emissions reductions.

Accessibility Considerations Ngā Whai Whakaaro mā te Hunga Hauā

- 6.8 This proposal improves accessibility and safety for students being collected from school by providing short term parking options near the main school gate.

7. Resource Implications Ngā Hīraunga Rauemi

Capex/Opex Ngā Utu Whakahaere

- 7.1 Cost to Implement - approximately \$700 for the new signs, removal of existing signs and new roadmarking and \$1,500 for investigation, consultation, and preparation of this report.
- 7.2 Maintenance/Ongoing costs - to be covered by the area maintenance contract.
- 7.3 Funding Source - Traffic Operations Team Traffic Signs and Markings budget (2023/24).

Other He mea anō

- 7.4 None identified.

8. Legal Implications Ngā Hīraunga ā-Ture

Statutory power to undertake proposals in the report Te Manatū Whakahaere Kaupapa

- 8.1 Part 1, Clause 7 of the Christchurch City Council Traffic and Parking Bylaw 2017 provides Council with the authority to install parking restrictions by resolution.
- 8.2 The Community Boards have delegated authority from the Council to exercise the delegations as set out in the Register of Delegations. The list of delegations for the Community Boards includes the resolution of stopping restrictions and traffic control devices.
- 8.3 The installation of any signs and/or markings associated with traffic control devices must comply with the Land Transport Rule: Traffic Control Devices 2004.

Other Legal Implications Ētahi atu Hīraunga-ā-Ture

- 8.4 There are no other legal implications relevant to this decision in regard to on-street parking and no stopping management.
- 8.5 This specific report has not been reviewed and approved by the Legal Services Unit however the report has been written using a general approach previously approved of by the Legal Services Unit, and the recommendations are consistent with the policy and legislative framework outlined in sections 8.1 – 8.3.


9. Risk Management Implications Ngā Hīraunga Tūraru

- 9.1 None identified.

10. Next Steps Ngā Mahinga ā-muri

- 10.1 If approved, the recommendations will be implemented within the current financial year (generally around four weeks after the contractor receives the request, but this is subject to other factors such as resourcing and prioritisation beyond Council's control).

Attachments Ngā Tāpirihanga

No.	Title	Reference	Page
A 	Papanui Primary School-tg146873-For Board Approval	23/1778179	26

In addition to the attached documents, the following background information is available:

Document Name – Location / File Link
Not applicable

Confirmation of Statutory Compliance Te Whakatūturutanga ā-Ture

Compliance with Statutory Decision-making Requirements (ss 76 - 81 Local Government Act 2002).

(a) This report contains:

- (i) sufficient information about all reasonably practicable options identified and assessed in terms of their advantages and disadvantages; and
- (ii) adequate consideration of the views and preferences of affected and interested persons bearing in mind any proposed or previous community engagement.

(b) The information reflects the level of significance of the matters covered by the report, as determined in accordance with the Council's significance and engagement policy.

Signatories Ngā Kaiwaitohu

Authors	Patricia Su - Passenger Transport Engineer Michael Thomson - Transport Engineer
Approved By	Katie Smith - Team Leader Traffic Operations Stephen Wright - Manager Operations (Transport)



Christchurch
City Council

Papanui Primary School
Proposed Parking Changes
For Board Approval

Attachment A

Original Plan Size: A4
Drawn: MJR Issue 1 24/10/2023
Designed: PS Drawing: TG146873
Approved: LB Project:

9. Chester Street East - Resident Permit Only and Angle Parking

Reference / Te Tohutoro: 24/149601

Report of / Te Pou Michael Thomson, Transport Network Planner,

Matua: Michael.thomson@ccc.govt.nz

Senior Manager / Jane Parfitt, Interim General Manager Infrastructure, Planning and
Pouwhakarae: Regulatory Services

1. Purpose and Origin of Report Te Pūtake Pūrongo

- 1.1 To re-instate the Resident Permit Only and Angle Parking spaces that were previously in place but were not reinstated when the road was resealed.
- 1.2 With the removal of the angle parking lines and the incorrect signage, the 'Resident Only' parking spaces have effectively been removed although up to eight 'Resident Parking Permits' may be issued for those spaces.
- 1.3 The decisions in this report are of low significance in relation to the Christchurch City Council's Significance and Engagement Policy. The level of significance was determined by the low level of impact and low number of people affected by the recommended decision.

2. Officer Recommendations Ngā Tūtohu

That the Waipapa Papanui-Innes-Central Community Board:

1. Approves that any previously approved resolutions be revoked, in accordance with Clause 6 (2) of the Christchurch City Council Traffic & Parking Bylaw 2017, on the south side of Chester Street East from its intersection with Barbadoes Street and extending in a westerly direction for a distance of 88 metres, pertaining to parking and /or stopping restrictions, made pursuant to any Bylaw, Local Government Act, or any Land Transport Rule, to the extent that they are in conflict with the parking and /or stopping restrictions described in recommendations 2 to 5 below.
2. Approves, pursuant to Clause 7 of the Christchurch City Council Traffic and Parking Bylaw 2017 and as shown on Attachment A (Drawing: TG148302, Issue: 30/01/2024) that the stopping of vehicles be prohibited at any time on the south side of Chester Street East from its intersection with Barbadoes Street and extending in westerly direction for a distance of 17 metres.
3. Approves, pursuant to Clause 10 of the Christchurch City Council Traffic and Parking Bylaw 2017 and as shown on Attachment A (Drawing: TG148302, Issue: 30/01/2024), that the parking of vehicles be reserved for vehicles with an approved Resident's Parking Permit, prominently displayed in the vehicle, on the south side of Chester Street East, commencing at a point 17 metres west of its intersection with Barbadoes Street and extending in a westerly direction for a distance of 10 metres. This restriction is to apply at all times and be restricted to 90 degree angle parking.
4. Approves, pursuant to Clause 7 of the Christchurch City Council Traffic and Parking Bylaw 2017 and as shown on Attachment A (Drawing: TG148302, Issue: 30/01/2024) that the parking of vehicles be restricted to 90 degree angle parking on the south side of Chester Street East commencing at a point 27 metres west from its intersection with Barbadoes Street and extending in a westerly direction for a distance of 28 metres.
5. Approves, pursuant to Clause 7 of the Christchurch City Council Traffic and Parking Bylaw 2017 and as shown on Attachment A (Drawing: TG148302, Issue: 30/01/2024) that the stopping of

vehicles be prohibited at any time on the south side of Chester Street East commencing at a point 55 metres from its intersection with Barbadoes Street and extending in westerly direction for a distance of 33 metres.

6. Approves that these resolutions take effect when parking signage and/or road marking that evidence the restrictions described in the staff report are in place (or removed in the case of revocations).

3. Reason for Report Recommendations Ngā Take mō te Whakatau

- 3.1 Re-instatement of the angle parking on the south side of Chester Street East near Barbadoes Street where four of the angle parking spaces are also reserved for residents with permits only in accordance with Attachment A.
- 3.2 This has impacted on the Parking Compliance Officer's ability to enforce the intended parking restrictions due to inadequate signs and markings.
- 3.3 According to the Council's Central City Parking Policy 2021, Council will also generally retain existing resident-only parking areas but do not permit new ones. Therefore, all existing permit holders in the immediate vicinity will be sent a letter in June advising them the details of how to obtain a permit including the permit cost and annual renewal fee. It will reflect negatively on the Council if residents with resident-only parking permits will need to again compete with commuters and other residents/visitors for a parking space.
- 3.4 The advantages of the preferred/recommended option are:
 - It will comply with Policy 6 of the Council's Central City Parking Policy 2021;
 - To assist the Parking Compliance Team with enforcing the intended parking restrictions; and
 - Better utilise the roadspace available with angle parking spaces as intended by the design of the indented parking bay.

4. Alternative Options Considered Ētahi atu Kōwhiringa

- 4.1 Maintain the status quo – Do Nothing.
- 4.2 There are no advantages with this option except it will not incur any cost associated with the re-instatement and the ongoing maintenance cost for the roadmarkings and signs.
- 4.3 The disadvantages of this option include:
 - 4.3.1 Contradicts Policy 6 of the Council's Central City Parking Policy 2021 where Council will generally retain existing resident-only parking areas but do not permit new resident-only areas. From the Council's SmartMap, the previously marked and signed resident-only parks have been there since at least 2004.
 - 4.3.2 According to Clause 6.12 of the Land Transport (Road User) Rule 2004, unless the road controlling authority has indicated that vehicles may be parked at an angle to the direction of the road, a driver or person in charge of a vehicle must not stop, stand, or park the vehicle otherwise than parallel with the direction of the roadway. Therefore, vehicles parked in these spaces should be parked parallel to the road which does not best utilise the space that is available or the intended road design.
 - 4.3.3 Provide a negative perception of the Council when there are inadequate signage and roadmarkings in place as the Parking Compliance Team are not able to undertake any enforcement in this parking area.

5. Detail Te Whakamahuki

- 5.1 The Parking Operations & Appeals Team have requested that the Area Traffic Engineer re-instate the resident-only permit parking spaces on Chester Street East. These reserved parking spaces for resident-only have been in place from at least 2004 (from Council's SmartMap) but they were not re-instated when the road was resealed sometime between October 2019 and August 2020 (as can be seen in Google Streetview). The roadmarkings for the remaining angle parking spaces in this indented parking bay area were also not re-instated.
- 5.2 Although there could be up to eight permits issued for the four resident-only permit parking spaces, residents are paying for a permit which is ineffective as they are now also competing with commuters and other residents/visitors due to the inadequate signs and roadmarkings in place.
- 5.3 The proposal has been developed in accordance with the Council's Central City Parking Policy 2021, where Council will generally retain existing resident-only parking areas but do not permit new ones.
- 5.4 The decision affects the following wards/Community Board areas:
 - 5.4.1 Waipapa Papanui-Innes-Central.

Community Views and Preferences

- 5.5 Consultation has been carried out with the affected properties from 12 to 29 February 2024 proposing that the angle parking spaces and the four Resident Permit Only parking spaces be re-instated. The consultation catchment area is shown in Figure 1.



Figure 1: Chester Street East, resident permit only and angle parking – consultation catchment area

- 5.6 Consultation documents were mailed out to the directly affected property owners/residents. Note that one of the affected property owner's postal address is overseas, therefore the consultation documents were sent to the property address for the residents only.
- 5.7 Four submissions were received on the proposal and all four submissions supported the proposal.
- 5.8 In addition, one of the submitters had also requested yellow cross-hatch markings in the no stopping area of the indented parking bay outside 1/120 Chester Street East to discourage commuters parking half onto the berm area as can be seen in Figure 2.

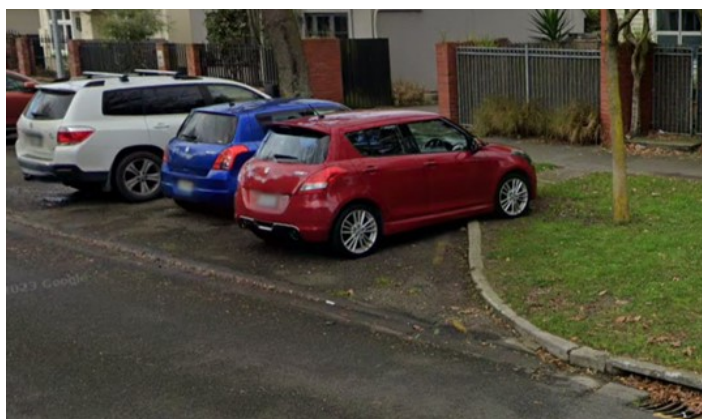


Figure 2: Chester Street East – car parked partly on grass berm and obstructing footpath outside 1/120 Chester Street East

- 5.9 It is noted that if the angle parking spaces were re-instated and the no stopping restrictions re-marked, it would be clearer to motorists where they can park.
- 5.10 Yellow cross hatchings are generally only installed in situations such as where exits for emergency vehicles may be blocked by queuing traffic or at a railway crossing to define a clear zone area that drivers should not enter when their departure is blocked. It is not appropriate to install the yellow cross hatching here as the no stopping restrictions already prohibits motorists from parking there.

6. Policy Framework Implications Ngā Hiraunga ā- Kaupapa here

Strategic Alignment Te Rautaki Tīaroaro

- 6.1 Council's strategic priorities have been considered in formulating the recommendations in this report, however this area of work is not specifically covered by an identified priority.
- 6.2 This report supports the [Council's Long Term Plan \(2021 - 2031\)](#):
- 6.3 Transport
- 6.3.1 Activity: Transport
- Level of Service: 10.3.3 Maintain customer perception of the ease of use of Council on- street parking facilities - >=50% resident satisfaction

Policy Consistency Te Whai Kaupapa here

- 6.4 The decision is consistent with Council's Plans and Policies. It is consistent with the [Central City Parking Policy](#) where generally existing resident-only parking areas are retained.

Impact on Mana Whenua Ngā Whai Take Mana Whenua

- 6.5 The decision does not involve a significant decision in relation to ancestral land or a body of water or other elements of intrinsic value, therefore this decision does not specifically impact Mana Whenua, their culture and traditions.
- 6.6 The decision does not involve a matter of interest to Mana Whenua and will not impact on our agreed partnership priorities with Ngā Papatipu Rūnanga.

Climate Change Impact Considerations Ngā Whai Whakaaro mā te Āhuarangi

- 6.7 The proposals in this report are unlikely to contribute significantly to adaptation to the impacts of climate change or emissions reductions.

Accessibility Considerations Ngā Whai Whakaaro mā te Hunga Hauā

- 6.8 This proposal allows residents with resident-only parking permits to be able to find a park more readily.

7. Resource Implications Ngā Hīraunga Rauemi

Capex/Opex Ngā Utu Whakahaere

- 7.1 Cost to Implement – approximately \$1,300 for the angle parking lines and signage and \$1,500 for the investigation and preparation of this report.
- 7.2 Maintenance/Ongoing costs – to be covered by the area maintenance contract.
- 7.3 Funding Source – Traffic Operations Team Traffic Signs and Markings budget (2023/24).

Other He mea anō

- 7.4 None identified.

8. Legal Implications Ngā Hīraunga ā-Ture

Statutory power to undertake proposals in the report Te Manatū Whakahaere Kaupapa

- 8.1 Part 1, Clause 7 of the Christchurch City Council Traffic and Parking Bylaw 2017 provides Council with the authority to install parking restrictions by resolution.
- 8.2 Clause 6(2) of the Christchurch City Council Traffic and Parking Bylaw 2017 provides Council with the authority to amend or revoke any resolution made under this bylaw at any time.
- 8.3 The installation of any signs and/or markings associated with traffic control devices must comply with the Land Transport Rule: Traffic Control Devices 2004.

Other Legal Implications Ētahi atu Hīraunga-ā-Ture

- 8.4 The legal consideration is that there may be legal repercussions as we are charging residents for a resident-only permit for a parking area that the Council does not currently provide or is able to enforce.
- 8.5 This specific report has not been reviewed and approved by the Legal Services Unit however the report has been written using a general approach previously approved of by the Legal Services Unit, and the recommendations are consistent with the policy and legislative framework outlined in sections 8.1 – 8.3.

9. Risk Management Implications Ngā Hīraunga Tūraru



- 9.1 None identified.

10. Next Steps Ngā Mahinga ā-muri

- 10.1 If approved, the recommendations will be implemented within the current financial year (generally around four weeks after the contractor receives the request, but this is subject to other factors such as resourcing and prioritisation beyond Council's control).



Attachments Ngā Tāpirihanga

No.	Title	Reference	Page
A  	Chester St East - Resident Permit Only and Angle Parking - tg148302 - Plan for Approval	24/361104	33

In addition to the attached documents, the following background information is available:

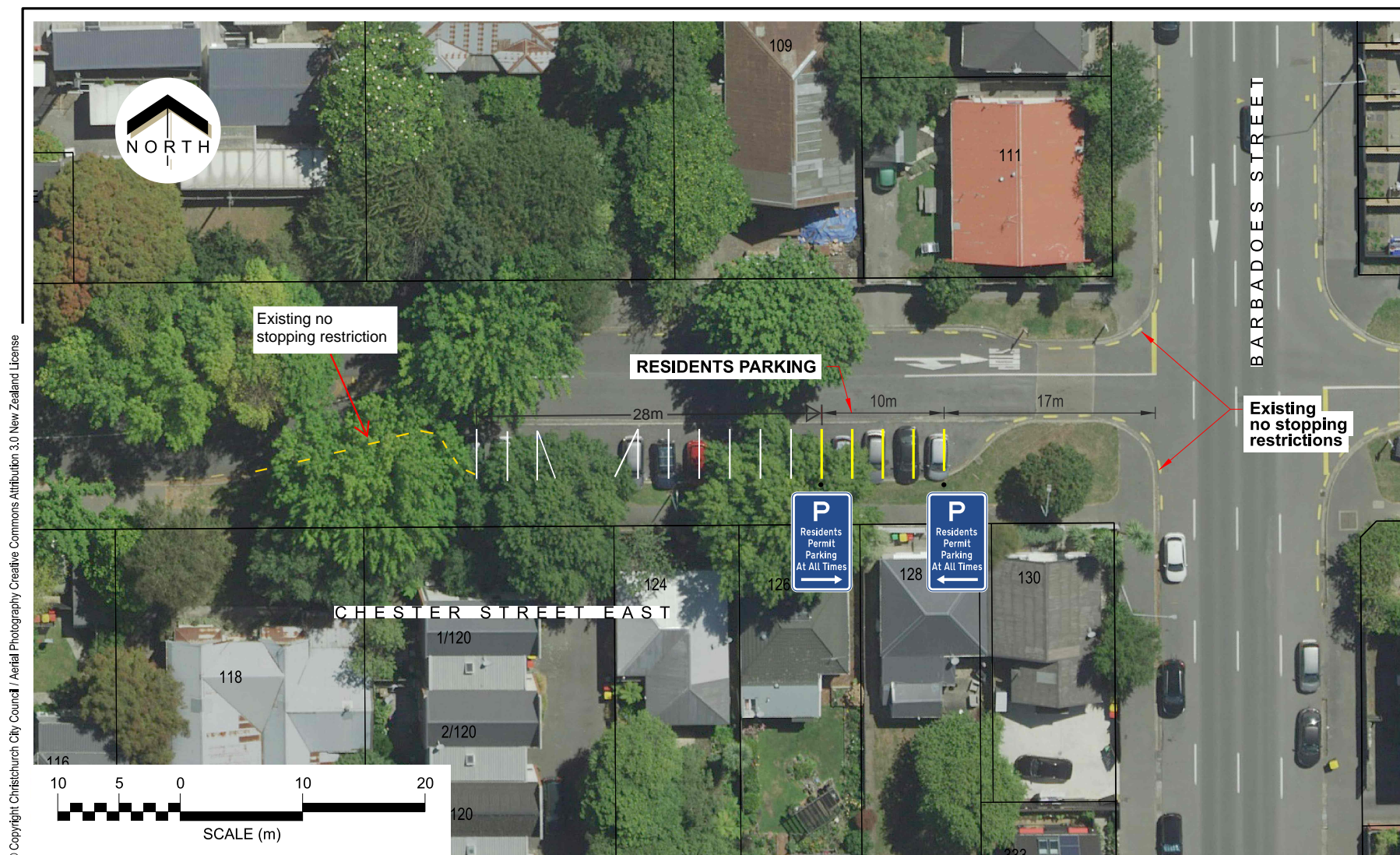
Document Name – Location / File Link
Not applicable

Confirmation of Statutory Compliance Te Whakatūturutanga ā-Ture

Compliance with Statutory Decision-making Requirements (ss 76 - 81 Local Government Act 2002).
(a) This report contains:
(i) sufficient information about all reasonably practicable options identified and assessed in terms of their advantages and disadvantages; and
(ii) adequate consideration of the views and preferences of affected and interested persons bearing in mind any proposed or previous community engagement.
(b) The information reflects the level of significance of the matters covered by the report, as determined in accordance with the Council's significance and engagement policy.

Signatories Ngā Kaiwaitohu

Authors	Patricia Su - Passenger Transport Engineer Michael Thomson - Transport Engineer
Approved By	Katie Smith - Team Leader Traffic Operations Stephen Wright - Manager Operations (Transport)



Christchurch
City Council

Chester Street East
Re-instatement of Parking Spaces
For Board Approval

Attachment A

Original Plan Size: A4
Drawn: MJR Issue 1 30/01/2024
Designed: PS Drawing: TG148302
Approved: LB Project:

10. Innes Road/Malvern Park Pedestrian Crossing - Proposed No Stopping Restrictions

Reference Te Tohutoro:	24/47427
Report of Te Pou Matua:	Sally-Ann Marshall - Traffic Engineer, sallyann.marshall@ccc.govt.nz
General Manager Pouwhakarae:	Mary Richardson, General Manager Citizens & Community (Mary.Richardson@ccc.govt.nz)

1. Purpose of the Report Te Pūtake Pūrongo

- 1.1 For the Waipapa Papanui-Innes-Central Community Board to approve the installation of No Stopping restrictions on Innes Road. This will improve visibility for pedestrians using the crossing adjacent to Malvern Park to cross Innes Road. This report has been written in response to a concern from a member of the public about parked vehicles affecting pedestrian visibility when crossing from the south side of the road.
- 1.2 The decisions in this report are of low significance in relation to the Christchurch City Council's Significance and Engagement Policy. The level of significance was determined by the low level of impact and low number of people affected by the recommended decision.
- 1.3 The community engagement and consultation outlined in this report reflect the assessment.
- 1.4 The recommended option is to install No Stopping restrictions in accordance with Attachment A.

2. Staff Recommendations / Ngā Tūtohu

That the Waipapa Papanui-Innes-Central Community Board:

1. Revokes any previous resolutions pertaining to parking and stopping restrictions made pursuant to any bylaw to the extent that they are in conflict with resolution 2 below.
2. Approves that, in accordance with Clause 7 of the Christchurch City Council Traffic and Parking Bylaw 2017, the stopping of vehicles be prohibited at all times on the south-east side of Innes Road commencing at a point 98 metres south-west of its intersection with Roosevelt Avenue and extending in a south-westerly direction for a distance of 46.5 metres.
3. Approves that these resolutions take effect when parking signage and/or road marking that evidence the restrictions described in the staff report are in place (or removed in the case of revocations).

3. Reason for Report Recommendations Ngā Take mō te Whakatau

- 3.1 There is an existing pedestrian refuge on Innes Road that links Malvern Park with a pedestrian walkway to Weston Road, as shown on Attachment A. Vehicles are repeatedly parking in a position that either blocks or obscures visibility of oncoming traffic to pedestrians waiting to cross, refer Attachment B.
- 3.2 Our recommendation is to install a No Stopping restriction in this location to deter this behaviour, as shown on Attachment A.

4. Alternative Options Considered Ētahi atu Kōwhiringa

- 4.1 Maintain the status quo – Do Nothing
- 4.2 The advantages of this option include:
 - 4.2.1 Retains approximately 12 on-street, unrestricted parking spaces.
- 4.3 The disadvantages of the option include:
 - 4.3.1 Does not address the identified safety issue with parked vehicles blocking the crossing and/or impeding visibility to pedestrians.
 - 4.3.2 Does not meet current standards for visibility at a crossing point.

5. Detail Te Whakamahuki

- 5.1 Innes Road is classified as a Minor Arterial road in the Councils Road Classification System.
- 5.2 The posted speed limit is 50 km/h.
- 5.3 There is an existing pedestrian refuge that links Malvern Park to a footpath to Weston Road on the opposite side of Innes Road. Vehicles have been identified as parking either blocking the crossing or impeding pedestrian visibility of oncoming traffic.
- 5.4 Crossing sight distance (CSD) should be provided at crossings where pedestrians do not have the priority and must choose gaps in the traffic stream to cross safely. The CSD has been calculated as 75 metres for this location considering the 50km/h operating speed, a 1.2 metre per second walk rate and a 6.5 metre crossing distance.
- 5.5 Using these criteria, we are recommending that 40.5 metres of no stopping lines be installed on the south side of Innes Road to achieve this standard. We are also recommending that one car park space in the westerly direction be included, to prevent vehicles from parking blocking or obscuring the crossing point.
- 5.6 The CSD is only affected for this approach scenario i.e.. on the south side of Innes Road. Appropriate sight distance is provided on the other crossing approach as there is a build-out on the north side of Innes Road.
- 5.7 The proposal will remove approximately 12 unrestricted parking spaces adjacent to Malvern Park. Parking occupancy is generally observed to be low to moderate in this location, apart from when sporting events are on. This has been discussed with Councils Parks unit. They confirmed that there are plenty of alternative parking opportunities in the area and they do not foresee the loss of these 12 parking spaces causing any issues.
- 5.8 The Waka Kotahi CAS crash database shows there was a serious incident in 2022 where a nine-year old was hit by a vehicle when crossing the road in this location. It does appear that they were crossing from north to south where visibility of oncoming traffic is clearer due to the existing build-out.
- 5.9 If approved, the recommendations will be implemented within the current financial year (generally around four weeks after the contractor receives the request, but this is subject to other factors such as resourcing and prioritisation beyond Council's control).

Community Views and Preferences

- 5.10 The proposal is adjacent to Malvern Park and is not directly outside any residential or business properties. Parks have been advised of the recommended option and have commented as per Section 5.6.
- 5.11 The Team Leader Parking Compliance supports the preferred option.

- 5.12 The do-nothing option is inconsistent with community requests to improve pedestrian safety in this location.

6. Policy Framework Implications Ngā Hīraunga ā- Kaupapa here

Strategic Alignment Te Rautaki Tīaroaro

- 6.1 Council's strategic priorities have been considered in formulating the recommendations in this report, however this area of work is not specifically covered by an identified priority.
- 6.2 This report supports the [Council's Long Term Plan \(2021 - 2031\)](#):
- 6.3 Transport
- 6.3.1 Activity: Transport
- Level of Service: 10.0.6.1 Reduce the number of death and serious injury crashes on the local road network - <=100 crashes

Policy Consistency Te Whai Kaupapa here

- 6.4 The recommendations in this report are consistent with the [Christchurch Suburban Parking Policy](#).

Impact on Mana Whenua Ngā Whai Take Mana Whenua

- 6.5 The effects of this proposal upon Mana Whenua are expected to be insignificant.

Climate Change Impact Considerations Ngā Whai Whakaaro mā te Āhuarangi

- 6.6 This proposal does not have any significant effect upon carbon emissions and Climate Change.

Accessibility Considerations Ngā Whai Whakaaro mā te Hunga Hauā

- 6.7 This proposal improves accessibility for pedestrians by improving sight lines and ensuring that pedestrians are visible to approaching traffic.

7. Resource Implications Ngā Hīraunga Rauemi

Capex/Opex Ngā Utu Whakahaere

- 7.1 Cost to Implement – approximately \$90 for line marking and \$750 for investigation and preparation of this report.
- 7.2 Maintenance/Ongoing costs – will be added to and covered by the area maintenance contract.
- 7.3 Funding Source – Traffic Operations Team Traffic Signs and Markings budget.

Other

- 7.4 None identified.

8. Legal Implications Ngā Hīraunga ā-Ture

Statutory power to undertake proposals in the report Te Manatū Whakahaere Kaupapa

- 8.1 Part 1, Clause 7 of the Christchurch City Council Traffic and Parking Bylaw 2017 provides Council with the authority to install parking restrictions by resolution.
- 8.2 The Community Boards have delegated authority from the Council to exercise the delegations as set out in the Register of Delegations. The list of delegations for the Community Boards includes the resolution of stopping restrictions and traffic control devices.

- 8.3 The installation of any signs and/or markings associated with traffic control devices must comply with the Land Transport Rule: Traffic Control Devices 2004.



Other Legal Implications Ētahi atu Hīraunga-ā-Ture

- 8.4 There is no other legal context, issue or implication relevant to this decision.
- 8.5 This specific report has not been reviewed and approved by the Legal Services Unit however the report has been written using a general approach previously approved of by the Legal Services Unit, and the recommendations are consistent with the policy and legislative framework outlined in sections 8.1 – 8.3.

9. Risk Management Implications Ngā Hīraunga Tūraru

- 9.1 None identified.

Attachments Ngā Tāpirihanga

No.	Title	Reference	Page
A 	Attachment A - Innes Road/Malvern Park Pedestrian crossing, Proposed No Stopping Restrictions	24/291510	39
B 	Attachment B - Malvern Park, Blocked Pedestrian Crossing Examples	24/291511	40

In addition to the attached documents, the following background information is available:

Document Name – Location / File Link
Not applicable

Confirmation of Statutory Compliance Te Whakatūturutanga ā-Ture

Compliance with Statutory Decision-making Requirements (ss 76 - 81 Local Government Act 2002).

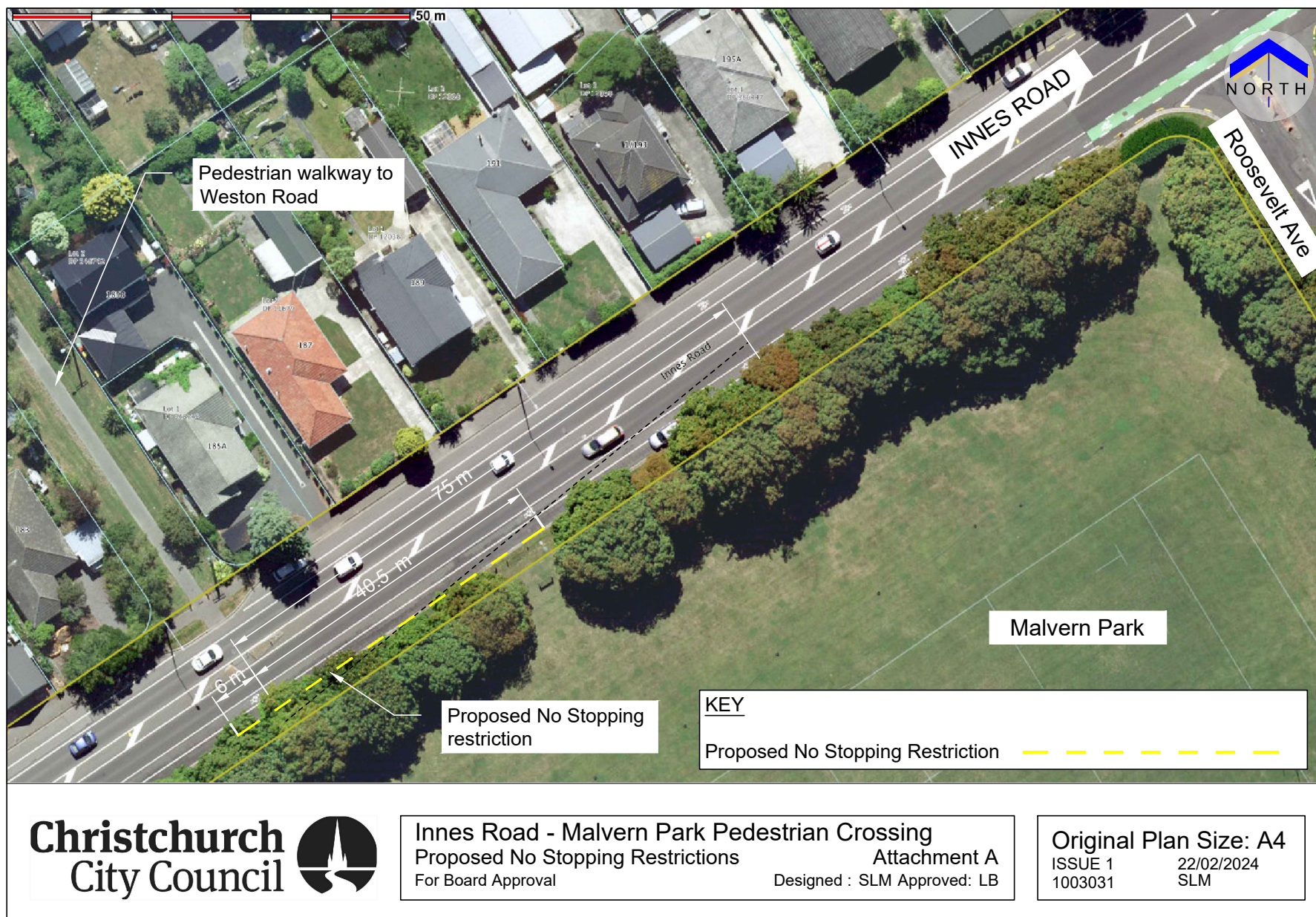
(a) This report contains:

- (i) sufficient information about all reasonably practicable options identified and assessed in terms of their advantages and disadvantages; and
- (ii) adequate consideration of the views and preferences of affected and interested persons bearing in mind any proposed or previous community engagement.

(b) The information reflects the level of significance of the matters covered by the report, as determined in accordance with the Council's significance and engagement policy.

Signatories Ngā Kaiwaitohu

Author	Sally-Ann Marshall - Traffic Engineer
Approved By	Katie Smith - Team Leader Traffic Operations Stephen Wright - Manager Operations (Transport)

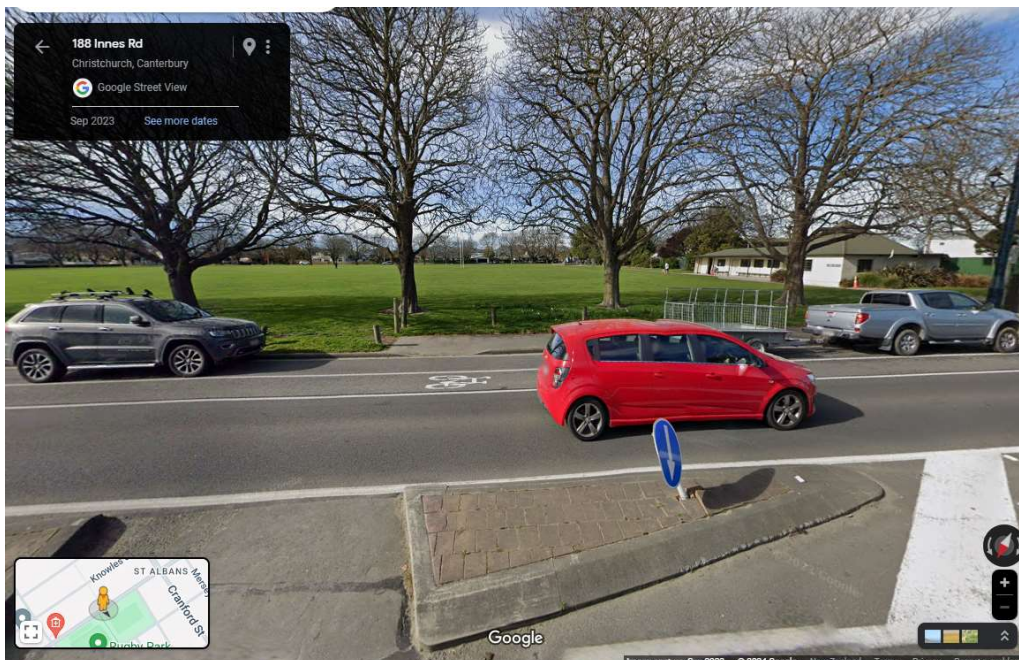


Innes Road – Malvern Park Pedestrian Crossing
Proposed No Stopping Restriction

22nd February 2024
Attachment B



Vehicle parked blocking the pedestrian crossing



Vehicles parked obscuring visibility of pedestrian crossing

11. Waipapa Papanui-Innes-Central - Better-Off Fund Applications for Consideration

Reference Te Tohutoro: 24/444764
 Stacey Holbrough Community Development Adviser
 Responsible Officer(s) Te Stacey.holbrough@ccc.govt.nz
 Pou Matua: Trudy Jones, Transport Planner Sustainable Transport
 Trudy.jones@ccc.govt.nz
 Accountable ELT
 Member Pouwhakarae: Andrew Rutledge, Acting General Manager Citizens and Community

1. Purpose and Origin of the Report Te Pūtake Pūrongo

1.1 The purpose of this report is for the Waipapa Papanui-Innes-Central Community Board to consider applications for funding from its **Better-Off Fund** as listed below.

Funding Request Number	Organisation	Project Name	Amount Requested	Amount Recommended
00067182	The Ron Proctor Environmental Award Trust	Papanui Bush pathway	\$60,000	\$40,000
00067183	The Christchurch City Council Parks Unit	Additional planting for Rutland Reserve	\$10,000	\$8,310
00067194	The Christchurch City Council Transport Unit	Northcote Road Corridor Safety Improvements Investigation	\$100,000	\$100,000

1.2 There is currently a balance of \$148,310 remaining in the fund.

2. Officer Recommendations Ngā Tūtohu

That the Waipapa Papanui-Innes-Central Community Board:

- Receive the information in the Waipapa Papanui-Innes-Central - Better-Off Fund Applications for Consideration Report.
- Note that the decisions in this report are of low significance concerning the Christchurch City Council’s Significance and Engagement Policy.
- Approves a grant of \$40,000 from its Better-Off Fund to The Ron Proctor Environmental Award Trust towards the Papanui Bush pathway.
- Approves a grant of \$8,310 from its Better-Off Fund to the Christchurch City Council Parks Unit towards additional planting for Rutland Reserve.
- Approves a grant of \$100,000 from its Better-Off Fund to the Christchurch City Council Transport Unit towards the Northcote Road Corridor Safety Improvements Investigation.

3. Key Points Ngā Take Matua

Strategic Alignment Te Rautaki Tīaroaro

- 3.1 The recommendations above are aligned to the Council's Strategic Framework and in particular the strategic priorities of a Collaborative and Confident City and A Cultural Powerhouse City. The projects also align with the Te Haumako Te Whitingia Strengthening Communities Together Strategy.
- 3.2 The purpose of the fund is to partner with organisations and groups to support local initiatives, projects, and activities through additional Community Board funding, including a focus on supporting local action to increase climate resilience.
- 3.3 Projects will improve well-being by building social capital, encouraging participation, increase accessibility and connectedness – generating opportunities for youth, and diverse communities and increasing local pride.
- 3.4 When considering allocation of funds, priority will be given to projects/initiatives that contribute towards the following outcomes:
 - Increasing the tree canopy across the city and our regional parks
 - Enhancing biodiversity
 - Safer neighbourhoods
 - Repairing infrastructure and facilities
 - Responding to climate change through adaptation planning
 - Encouraging active travel
- 3.5 Projects should also show a strong alignment to the Council's Te Haumako Te Whitingia Strengthening Communities Together Strategy.
- 3.6 Priority will also be given to projects that directly contribute towards achieving Community Board Plan priorities.

Decision Making Authority Te Mana Whakatau

- 3.7 The Community Board has the delegated authority to determine the allocation of the **Better-Off Fund** for each community.
 - 3.7.1 Allocations must be consistent with any policies, standards or criteria adopted by the Council.
 - 3.7.2 The Fund does not cover:
 - Legal challenges or Environment Court challenges against the Council, Council Controlled Organisations, or Community Board decisions.
 - Projects or initiatives that change the scope of a Council project or that will lead to ongoing operational costs to the Council (though Community Boards can recommend to the Council that it consider a grant for this purpose).

Assessment of Significance and Engagement Te Aromatawai Whakahirahira

- 3.8 The decisions in this report are of low significance concerning the Christchurch City Council's Significance and Engagement Policy.
- 3.9 The level of significance was determined by the number of people affected and/or with an interest.

- 3.10 Due to the assessment of low significance, no further community engagement and consultation is required.




Discussion Kōrerorero

- 3.11 At the time of writing, the balance of the **Better-Off Fund** is as below.

Total Budget 2023/25	Granted To Date	Available for allocation	Balance If Staff Recommendation adopted
\$500,000	\$351,690	\$148,310	\$0

- 3.12 Based on the current **Better-Off Fund criteria**, the applications listed above are eligible for funding.
- 3.13 The attached Project Brief(s) provide detailed information for the applications. This includes organisational details, project details, financial information, and a staff assessment.

Attachments Ngā Tāpirihanga

No.	Title	Reference	Page
A 	Papanui-Innes-Central Better-Off Project Brief - Papanui Bush Walkway	24/462379	44
B 	Papanui-Innes-Central Better-Off Project Brief - Rutland Reserve	24/463159	47
C 	Papanui-Innes-Central Better-Off Project Brief - Northcote Road Corridor Safety Improvements Investigation	24/472133	50

Signatories Ngā Kaiwaitohu

Author	Stacey Holbrough - Community Development Advisor
Approved By	Emma Pavey - Manager Community Governance, Papanui-Innes-Central Matthew McLintock - Manager Community Governance Team Peter Langbein - Finance Business Partner John Filsell - Head of Community Support and Partnerships

BETTER-OFF FUND PROJECT BRIEF

Better of Funding is to “Partner with organisations and groups to support local initiatives, projects, and activities through additional Community Board funding, including a focus on supporting local action to increase climate resilience. Projects will improve wellbeing by building social capital, encourage participation, increase accessibility and connectedness – generating opportunities for youth, diverse communities and increasing local pride.”

SECTION ONE: APPLICANT DETAILS

Name of Community Board	Staff member and position	Staff member contact details (email & phone)
Waipapa Papanui-Innes-Central	Stacey Holbrough Community Development Adviser	Stacey.holbrough@ccc.govt.nz 03 941 8102

SECTION TWO: PROJECT DETAILS

Name of Project	Project Description
Papanui Bush	This project is to continue to develop the pathway at Papanui Bush around the outside of the Bush for the community to use and enjoy.

Alignment to Funding Priorities

Better-Off Fund Priorities	Council Strategies	Community Board Plan Priorities
“Partner with organisations and groups to support local initiatives, projects, and activities through additional Community Board funding, including a focus on supporting local action to increase climate resilience. Projects will improve wellbeing by building social capital, encourage participation, increase accessibility and connectedness – generating opportunities for youth, diverse communities and increasing local pride.”	<p>Strengthening Communities Together Strategy</p> <p>Pillar 2: Place Support and help build connections between communities to foster a sense of local identity, shared experience, and stewardship.</p> <p>Objective 2.1: Encourage communities to create and sustain a sense of local identity and ownership.</p> <p>Objective 2.2: Work with new and changing communities in both rural and urban areas to build a sense of belonging.</p> <p>Objective 2.3: Support the community activation and kaitiakitanga of public places and spaces.</p>	The community board is committed to support the Ōtautahi Christchurch Climate Resilience Strategy climate goals and the Ōtautahi -Christchurch Urban Forest Plan

	<p>Pillar 3: Participation Residents and groups in the wider community are socially and actively engaged and able to initiate and influence decisions affecting their lives.</p> <p>Objective 3.4: Increase volunteering opportunities across the Council and the wider community and support the organisations providing such opportunities.</p>	
--	---	--

SECTION THREE: PROJECT DELIVERY

1. Will the project be delivered in partnership with an external community organisation? Yes
If Yes
2. Will the project be delivered by the local Community Governance Team? No
3. Will the project be delivered by another Council Unit? No

Name of Organisation	Contact person and position	Contact details (email & phone)
The Ron Proctor Environmental Award Trust	Denis McMurtrie	

Has the Unit Head agreed to the project? Yes

SECTION FOUR: PROJECT BUDGET

Total Cost of Project: quotes so far are between \$50,000 to 70,000.

Item	Amount
Quote one – Green by Nature	\$61,551 +GST
Quote two – waiting for quote	TBC
Quote three – waiting for quote	TBC

Any other comments on budget?

Dependent on funding the pathway can be divided in phases as funding is secured.
--

SECTION FIVE: TIMEFRAMES AND REPORTING

Expected start date of project:	May 2024
---------------------------------	----------

Expected end date of project:	October 2025
-------------------------------	--------------

Reporting – How will you report to the Board on progress of the project and how often?
Governance staff will update the Waipapa Community Board through the area report.

SECTION SIX: STAFF ASSESSMENT

Since 2018 Papanui Bush with the support of Papanui Rotary and the Ron Proctor Environmental Award Trust have been passionate about enhancing the bush area. They have worked alongside and built relationships with Council, the Community Board, Council staff, local schools, churches, and local communities. They have regular planting and clean up days and have taken a kaitiaki (guardianship) role of Papanui Bush.

Papanui Bush is a Council greenspace and once boasted an abundance of forest birds. This was at a time when the area was covered by a large stand of forest, dominated by tōtara, mātai, kahikatea and kānuka trees. Papanui Bush generated a thriving business for the timber industry in the early years of European settlement. The milling of this area in the 1850s rapidly demolished the entire 30 hectares of bush.

Two major health and wellness centres, The Braintree Trust, and Cancer Society, sit adjacent to Papanui Bush. Having a native green space that has an accessible and usable walkway will bring many health and wellbeing benefits.

The next step in the development of Papanui Bush is to look at extending the pathway with the end goal for users to be able to complete a circuit of Papanui Bush.

Dependent on funding, the pathway can be divided in phases as funding is secured.

The kaitiaki of the Bush is actively looking at other sources of funding such as the Ron Proctor Environmental Award Trust, contacting local businesses for sponsorships and looking at partnership opportunities.

Any financial contribution from the Waipapa Papanui-Innes-Central Community Board to this project would be gratefully received.

SECTION SEVEN: STAFF RECOMMENDATION

Recommended for funding? Yes

Amount recommended: \$40,000

BETTER-OFF FUND PROJECT BRIEF

Better of Funding is to “Partner with organisations and groups to support local initiatives, projects, and activities through additional Community Board funding, including a focus on supporting local action to increase climate resilience. Projects will improve wellbeing by building social capital, encourage participation, increase accessibility and connectedness – generating opportunities for youth, diverse communities and increasing local pride.”

SECTION ONE: APPLICANT DETAILS

Name of Community Board	Staff member and position	Staff member contact details (email & phone)
Waipapa Papanui-Innes-Central	Stacey Holbrough Community Development Adviser	Stacey.holbrough@ccc.govt.nz 03 941 8102

SECTION TWO: PROJECT DETAILS

Name of Project	Project Description
Rutland Reserve	For additional native planting for Rutland Reserve.

Alignment to Funding Priorities

Better-Off Fund Priorities	Council Strategies	Community Board Plan Priorities
“Partner with organisations and groups to support local initiatives, projects, and activities through additional Community Board funding, including a focus on supporting local action to increase climate resilience. Projects will improve wellbeing by building social capital, encourage participation, increase accessibility and connectedness – generating opportunities for youth, diverse communities and increasing local pride.”	<p>Strengthening Communities Together Strategy</p> <p>Pillar 2 Place Support and help build connections between communities to foster a sense of local identity, shared experience, and stewardship.</p> <p>Objective 2.1: Encourage communities to create and sustain a sense of local identity and ownership.</p> <p>to initiate and influence decisions affecting their lives.</p>	<p>The community board will consider accessibility when making any decisions.</p> <p>The community board will advocate for the inclusion of community facilities, sporting facilities, parks, greenspace, and amenities in areas of high intensification, and areas earmarked for future intensification.</p> <p>The community board is committed to support the Ōtautahi Christchurch Climate Resilience Strategy climate goals and the Ōtautahi -Christchurch Urban Forest Plan</p>

SECTION THREE: PROJECT DELIVERY

1. Will the project be delivered in partnership with an external community organisation? No
2. Will the project be delivered by the local Community Governance Team? No
3. Will the project be delivered by another Council Unit? Yes

Name of Council Unit	Contact person and position	Contact details. (email & phone)
Parks Unit	Bridie Gibbings Manager Operations Community Parks Development	

Has the Unit Head agreed to the project? Yes

SECTION FOUR: PROJECT BUDGET

Total Cost of Project \$8,310

Item	Amount
Planting at Rutland Reserve	\$8,310
TOTAL	\$8,310

Are there any other sources of funding contributing to the project? No

Any other comments on budget? No

SECTION FIVE: TIMEFRAMES AND REPORTING

Expected start date of project:	May 2024
Expected end date of project:	December 2024

Reporting – How will you report to the Board on progress of the project and how often?
Governance staff will update the Waipapa Community Board through the area report.

SECTION SIX: STAFF ASSESSMENT

<p>Rutland Reserve is adjacent to the much larger Cranford Basin green space. The total area covers two hectares, and perimeter is 669 metres.</p> <p>Papanui Parallel cycleway goes through Rutland Reserve.</p> <p>Paparoa Street School is located beside Rutland Reserve. Paparoa Street School pupils have worked with the Christchurch City Council rangers on numerous projects at Rutland Reserve.</p> <p>Park Unit staff believe the Reserve would benefit from additional planting.</p> <p>Native planting has a number of benefits:</p> <ul style="list-style-type: none"> it provides or enhances bird, lizard, and pollinator habitats, and restores soils, adding to the green infrastructure of the city there are cascading ecosystem benefits to our waterways and catchment areas, increased thermal comfort, and increased resilience, and

participating in planting activities and adding green spaces to the city has mental and public health benefits. Research from Te Herenga Waka—Victoria University of Wellington shows the effects of gardening and horticultural therapy on people's health and wellbeing provided is overwhelmingly positive.

The proposed Cranford Basin development neighbours the Rutland Reserve.

This will bring a possible 1400 homes to East Papanui – it is the understanding of staff that a resource consent process is currently underway. No decision has been made yet as it is a very detailed process because of the ground conditions, springs, waterways, transport requirements and various separate owners of the current land.

Please see the map below the proximity of the proposed development to Rutland Reserve.



SECTION SEVEN: STAFF RECOMMENDATION

Recommended for funding? That the Waipapa Papanui-Innes-Central Community Board fund

Amount recommended: \$8,310

BETTER-OFF FUND PROJECT BRIEF

Better-off Funding is to “Partner with organisations and groups to support local initiatives, projects and activities through additional Community Board funding, including a focus on supporting local action to increase climate resilience. Projects will improve wellbeing by building social capital, encourage participation, increase accessibility and connectedness – generating opportunities for youth, diverse communities and increasing local pride”.

SECTION ONE: APPLICANT DETAILS

Name of Community Board	Staff member and position	Staff member contact details (email & phone)
Waipapa Papanui-Innes-Central	Emily Taylor, Senior Transport Planner	Emily.Taylor@ccc.govt.nz

SECTION TWO: PROJECT DETAILS

Name of Project	Project Description
Northcote Road Corridor Safety Improvements Investigation	For Investigation into possible safety improvements along Northcote Road. This is likely to include pedestrian and cycle improvements.

Alignment to Funding Priorities

Better-Off Fund Priorities	Council Strategies	Community Board Plan Priorities
“Partner with organisations and groups to support local initiatives, projects and activities through additional Community Board funding, including a focus on supporting local action to increase climate resilience. Projects will improve wellbeing by building social capital, encourage participation, increase accessibility and connectedness – generating opportunities for youth, diverse communities and increasing local pride”.	<p>In alignment with our Community Outcomes;</p> <ul style="list-style-type: none"> A green liveable city. A collaborative confident city. <p>This means our neighbourhoods and communities are accessible and well-connected, supporting our goals to reduce emissions, and build climate resilience.</p> <p>The vision in the Christchurch Strategic Transport Plan is to Keep Christchurch moving forward by providing transport choices to connect people and places</p>	A Connected Transport Network in Waipapa Papanui-Innes-Central (road, cycleways, paths). The Waipapa Papanui-Innes-Central Community Board identifies that a city with a good transport network is vital for a connected and accessible community. The board will ensure that community safety is at the forefront of all transport recommendations and decisions it makes, including the need for safe speeds and safe streets for all of our residents. The board is also committed to advocating strongly for active transport modes and networks to support walking, cycling, and public transport.

SECTION THREE: PROJECT DELIVERY		

1. Will the project be delivered in partnership with an external community organisation? No

If Yes

Name of Organisation	Contact person and position	Contact details (email & phone)

2. Will the project be delivered by the local Community Governance Team? No

3. Will the project be delivered by another Council Unit? Yes

If Yes

Name of Council Unit	Contact person and position	Contact details (email & phone)
Transport Unit	Emily Taylor	Emily.Taylor@ccc.govt.nz

Has the Unit Head agreed to the project? Yes

SECTION FOUR: PROJECT BUDGET

Total Cost of Project \$ 100,000

Budget items requested

Item	Amount
Northcote Road Corridor Safety Improvements (incl cycleway improvements) investigations and option development	\$100,000
	\$
	\$
TOTAL	\$ 100,000

Are there any other sources of funding contributing to the project?

Other funding source	Amount
Unknown	\$
	\$
TOTAL	\$

Any other comments on budget?

--

SECTION FIVE: TIMEFRAMES AND REPORTING

Expected start date of project:	2024
Expected end date of project:	February 2025

Reporting – How will you report to the Board on progress of the project and how often?

Results of the investigation will be presented to the Board, this will also inform projects for the next Annual Plan and Long Term Plan.

SECTION SIX: STAFF ASSESSMENT

Northcote Road is a key arterial road with average weekday traffic volumes of 11,332 detected eastbound and 12,554 westbound. The 85th percentile speed is 55.6km/hr. Heavy traffic makes up 6.5% vehicle types.

Changing land use in the vicinity such as development of the new Marian College school site and Pak n Save supermarket have meant earlier intentions to four lane this arterial have been superseded by more appropriate safety improvement measures; pedestrian level of service enhancements in the remodelled Main North Road/ Northcote/QE2 intersection associated with the Pak n Save development, and the signalised pedestrian crossing at Lydia Street to improve access to Marian College.

In terms of other relevant transport projects in the vicinity, Council investigations are planned for the following;

- Greers/Northcote/Sawyers Arms intersection improvement project FY 2024-2025
- Greers/Langdons Road Signalisation project FY 2024
- Railway signalisation upgrades (Harewood Road, Langdons Road, Sawyers Arm Road), and other possible MCR developments mid FY 2024

In alignment with the above works it is timely to investigate options for improving safety and access through this section of the Northcote corridor between the railway line and Main North Road. In association with changing land uses and developments, issues have been raised at the Community Board 15/2/24 (<https://www.youtube.com/watch?v=Cw2aJuBRWu4> ref: 2min into video) regarding an increase in on-street parking creating visibility issues for safe pedestrian crossing on side streets; Fenchurch and Uxbridge. Consideration of hybrid tickets shows that there is concern amongst residents about the impact of the additional school and supermarket in the area.

Any redesign of road layouts will need to ensure improvements which offer an appropriate and consistent level of service through the corridor to optimise accessibility for all modes. Corridor safety improvements would need to include review of traffic calming measures, pedestrian crossings, car parking and turning layouts on side streets.

One consideration to be aware of is that a cycle connection through to the railway cycle path has potential to trigger Kiwirail requirements for a level crossing upgrade, the costs of which tend to escalate beyond Council means. Design and investigations should factor this into possible outcomes as costs associated with railway crossing improvements could be prohibitively high.

Safety improvements with a pedestrian crossing have now been made through the Northcote Road corridor at Lydia Street at Marian College. The section of local cycleway needed to link with Main North Road has been identified as a necessary connector particularly for school children cycling on Northcote Road to Marian College as well as the new Pak 'n' Save supermarket accessed from Main North Road.

SECTION SEVEN: STAFF RECOMMENDATION

Recommended for funding? Yes

Amount recommended: \$100,000

12. Waipapa Papanui-Innes-Central 2023-24 Discretionary Response Fund Application- Edgware Tennis Club Incorporated and Morrison Avenue Bowling Club (Inc)

Reference / Te Tohutoro: 24/401641

Report of / Te Pou Helen Miles, Community Recreation Advisor
Matua: (Helen.Miles@ccc.govt.nz)

Senior Manager / Andrew Rutledge, Acting General Manager Citizens and Community
Pouwhakarae:

1. Purpose of Report Te Pūtake Pūrongo

- 1.1 The purpose of this report is for the Waipapa Papanui-Innes-Central Community Board to consider an application for funding from its 2023-24 Discretionary Response Fund from the organisation(s) listed below.

Funding Request Number	Organisation	Project Name	Amount Requested	Amount Recommended
00067024	Edgware Tennis Club Incorporated	Drainage- repair and replace	\$17,000	\$10,000
00067175	Morrison Avenue Bowling Club (Inc)	Accessible Club building	\$33,323	\$15,000

- 1.2 There is currently a balance of \$77,622 remaining in the fund.

2. Staff Recommendations / Ngā Tūtohu

That the Waipapa Papanui-Innes-Central Community Board:

- Approves a grant of \$10,000 from its 2023-24 Discretionary Response Fund to Edgware Tennis Club Incorporated towards the drainage repair and replace project.
- Approves a grant of \$15,000 from its 2023-24 Discretionary Response Fund to Morrison Avenue Bowling Club (Inc) towards the Accessible Club Building project.

3. Key Points Ngā Take Matua

Strategic Alignment Te Rautaki Tīaroaro

- 3.1 The recommendations above are aligned to the Council's Strategic Framework and in particular the strategic priorities of a Collaborative and Confident City and A Cultural Powerhouse City. The projects also align with the Te Haumako Te Whitingia Strengthening Communities Together Strategy.

Decision Making Authority Te Mana Whakatau

- 3.2 The Community Board has the delegated authority to determine the allocation of the Discretionary Response Fund for each community.
- 3.2.1 Allocations must be consistent with any policies, standards or criteria adopted by the Council.

3.2.2 The Fund does not cover:

- Legal challenges or Environment Court challenges against the Council, Council Controlled organisations, or Community Board decisions
- Projects or initiatives that change the scope of a Council project or that will lead to ongoing operational costs to the Council (though Community Boards can recommend to the Council that it consider a grant for this purpose).

Assessment of Significance and Engagement Te Aromatawai Whakahirahira

- 3.3 The decisions in this report are of low significance in relation to the Christchurch City Council's Significance and Engagement Policy.
- 3.4 The level of significance was determined by the number of people affected and/or with an interest.
- 3.5 Due to the assessment of low significance, no further community engagement and consultation is required.



Discussion Kōrerorero

- 3.6 At the time of writing, the balance of the 2023-24 Discretionary Response Fund is as below.

Total Budget 2023/24	Granted To Date	Available for allocation	Balance If Staff Recommendation adopted
\$132,315	\$54,693	\$77,622	\$52,622

- 3.7 Based on the current Discretionary Response Fund criteria, the applications listed above are eligible for funding.
- 3.8 The attached Decision Matrix provides detailed information for the applications. This includes organisational details, project details, financial information, and a staff assessment.

Attachments Ngā Tāpirihanga

No.	Title	Reference	Page
A 	Decision Matrix - Edgware Tennis Club - Drainage repair and replacement	24/475802	58
B 	Decision Matrix - Morrison Avenue Bowling Club Inc	24/461084	59

Confirmation of Statutory Compliance Te Whakatūturutanga ā-Ture

Compliance with Statutory Decision-making Requirements (ss 76 - 81 Local Government Act 2002).

(a) This report contains:

- sufficient information about all reasonably practicable options identified and assessed in terms of their advantages and disadvantages; and
- adequate consideration of the views and preferences of affected and interested persons bearing in mind any proposed or previous community engagement.

(b) The information reflects the level of significance of the matters covered by the report, as determined in accordance with the Council's significance and engagement policy.

Signatories Ngā Kaiwaitohu

Author	Helen Miles - Community Recreation Advisor
Approved By	Emma Pavey - Manager Community Governance, Papanui-Innes-Central

2023/24 DRF PAPANUI-INNES-CENTRAL DECISION MATRIX

Priority Rating

One	Meets all eligibility criteria and contributes significantly to Funding Outcomes and Priorities. Highly recommended for funding.
Two	Meets all eligibility criteria and contributes to Funding Outcomes and Priorities. Recommended for funding.
Three	Meets all eligibility criteria and contributes to Funding Outcomes and Priorities but to a lesser extent than Priority 2 applications. Not recommended for funding.
Four	Meets all eligibility criteria and has minimum contribution to Funding Outcomes and Priorities / Insufficient information provided by applicant (in application and after request from Advisor) / Other funding sources more appropriate. Not recommended for funding.

00067024	Organisation Name Edgware Tennis Club Incorporated.	Name and Description Drainage - repair and replace Storm-water run off drainage system.	Funding History 2021/22 - \$900 SCF (grandstand replacement) 2020/21 - \$600 SCF (scoreboards) 2019/20 - \$1,700 SCF (tennis balls) 2018/19 - \$700 SCF (Junior Coaching) Other Sources of Funding Applications will be made to other funders.	Request Budget Total Cost \$17,372 Requested Amount \$17,372 100% percentage requested. Contribution Sought Towards: Installation of storm-water tennis court drainage system -\$17,000	Staff Recommendation \$10,000 That the Waipapa Papanui-Innes-Central Community Board approves a grant of \$10,000 from its 2023-24 Discretionary Response Fund to Edgware Tennis Club Incorporated towards the Drainage – repair and replace project.	Priority 2
----------	---	---	--	---	---	---------------------------------

Organisation Details: Service Base: Innes Road Legal Status: Incorporated Society Established: 1/09/1922 Staff – Paid: 1 Volunteers: 17 Annual Volunteer Hours: 100 Participants: 150 Target Groups: Sports/Recreation Networks: Tennis Canterbury affiliation Tennis NZ (wider umbrella) Organisation Description/Objectives: Sport Club	Alignment with Council Strategies and Policies <ul style="list-style-type: none"> Te-Haumako-Te Whitingia- Strengthening Communities Together Strategy Physical Recreation and Sports Strategy Alignment with Council Funding Outcomes <ul style="list-style-type: none"> Enhance community and neighbourhood safety Foster collaborative responses Outcomes that will be achieved through this project We will prevent damage and discomfort to all neighbouring properties by having an adequate drainage system. We will be able to renew our lease as a tennis club and keep functioning as a prominent tennis club in Christchurch. We will optimise the drainage for our own facility which will ensure courts are more usable more often. How Will Participants Be Better Off? No leaking water into surrounding properties. More tennis able to be played due to drainage being effective.	Staff Assessment Edgware Tennis Club Incorporated (Club) is dedicated to advancing the game of tennis and offering its members high-quality facilities. The Club, run by a small committee of volunteers, boasts nine hard courts, four of which are equipped with lighting for nighttime play. The facility hosts social and competitive tennis events, inter-club competitions for junior and senior members, Wednesday school competitions, all year-round social tennis, and coaching sessions. With members ranging from four to 81 years old, the Club boasts 85 junior members, 20 seniors, and 13 casual members. The court's drainage system, more notably in one corner, has been identified as insufficient, leading to concerns a neighbouring property raised regarding winter storm-water runoff. The Parks unit team has assisted by implementing a temporary diversion to alleviate rainwater flow onto adjacent properties during heavy rainfall. Nevertheless, the inadequacy of the court's drainage system, specifically in the one corner, underscores the need for a lasting solution. This is extremely important to the Club's relationship with its neighbours and to ensure no further damage is caused their property. It is in the terms of the lease agreement that it is the lessee's duty to set up and uphold drainage systems. With the current lease term concluded, the Club aims to secure a fresh lease. Once drainage concerns are addressed, it is not anticipated that there will be any obstacles to the Club obtaining the new lease. This updated lease will emphasise the Club's responsibility to manage storm-water runoff appropriately. Situated in a family-populated part of the city, the Club benefits from a growing interest in sports and thriving Primary schools. The junior program is expanding, thanks to the coach's efforts and collaboration with Tennis Canterbury. The Club has successfully raised funds for court repairs and resurfacing and is making ongoing efforts to secure additional funds for a permanent drainage solution. As winter approaches, the urgency of addressing this matter has become more pronounced. The Club will seek support from other potential funders to ensure the successful execution of this necessary improvement. Rationale for staff recommendation: The project aligns strongly with the Te-Haumako-Te Whitingia-Strengthening Communities Together Strategy and the Physical Recreation and Sport Strategy The grant will directly impact the condition of the neighbour's property and assist the Club with its obligations under the existing and proposed new leases. The grant will enhance the Club's provision of courts and services during winter. The Club is fiscally responsible and has a proven track record of delivery, ensuring they meet their outcomes within budget.
---	--	--

2023/24 DRF PAPANUI-INNES-CENTRAL DECISION MATRIX

Priority Rating

One	Meets all eligibility criteria and contributes significantly to Funding Outcomes and Priorities. Highly recommended for funding.
Two	Meets all eligibility criteria and contributes to Funding Outcomes and Priorities. Recommended for funding.
Three	Meets all eligibility criteria and contributes to Funding Outcomes and Priorities but to a lesser extent than Priority 2 applications. Not recommended for funding.
Four	Meets all eligibility criteria and has minimum contribution to Funding Outcomes and Priorities / Insufficient information provided by applicant (in application and after request from Advisor) / Other funding sources more appropriate. Not recommended for funding.

00067175	Organisation Name Morrison Avenue Bowling Club (Inc)	Name and Description Accessible Club Building The project requires the relocation of overhead wiring to underground before the alterations to update the building, so it has an accessible updated locker and toilet area.	Funding History 2022/23 - \$3,000.00 (Green's Maintenance) SCF Papanui-Innes 2020/21 - \$3,000.00 (Green's Maintenance) DRF Papanui-Innes 2019/20 - \$3,000.00 (Green's Maintenance) DRF Papanui-Innes Other Sources of Funding Nil	Request Budget Total Cost \$283,323 Requested Amount \$33,323 12% percentage requested Contribution Sought Towards: Underground wiring- \$33,323	Staff Recommendation \$15,000 That the Waipapa Papanui-Innes-Central Community Board approves a grant of \$15,000 from its 2023-24 Discretionary Response Fund to Morrison Avenue Bowling Club (Inc) towards the Accessible Club Building project.	Priority 2
----------	--	--	--	--	--	---------------------------------

Organisation Details: Service Base: 30 Morrison Ave Legal Status: Incorporated Society Established: 5/10/1959 Staff – Paid: 2 Volunteers: 12 Annual Volunteer Hours: 1465 Participants: 465 Target Groups: Sports/Recreation Networks: Bowls NZ, Canterbury Bowls Organisation Description/Objectives: Promoting the game of bowls.	Alignment with Council Strategies and Policies <ul style="list-style-type: none">Te-Haumako-Te Whitingia- Strengthening Communities Together StrategyPhysical Recreation and Sports Strategy Alignment with Council Funding Outcomes <ul style="list-style-type: none">Support, develop and promote capacityProvide community based programmesReduce or overcome barriers Outcomes that will be achieved through this project Accessible toilet Upgrade present toilet facilities Improve changing and locker room area Upgrade present club rooms from 1960's to meet present day standard How Will Participants Be Better Off? Provide accessible toilet facilities and safety by under power supply	Staff Assessment Bowls have been played on Morrison Avenue since 1959. The Morrison Avenue Bowling Club (Inc) (the Club) owns the current facilities on the site, which is on reserve land leased from the Council. The current Club's financial membership is 95 people, but the Club sees an average of 500 people each week during the summer season using the greens. The Club is involved in National, Interclub, Social, and In-House competitions and indoor bowls during winter. Merivale Papanui Rugby Football Club uses the clubrooms for their weekly after-match prize giving during the winter. Having two greens enables the Club to run big competitions and meet the local community needs. In 2022, the Club was honoured with the Canterbury Bowling Club of the Year title. Situated in the heart of a Kainga Ora housing area and in proximity to several retirement complexes, the Club serves as a vital resource for the local community's older adults, offering easy to access facilities that mitigate the need for transportation and combat social isolation and inactivity. Despite its commendable efforts, the Club faces challenges in accommodating disabled adults and children fully, as their time at the Club is limited due to the lack of accessibility. However, the Club remains a hub for inclusivity, with local schools utilising the greens for pupils unable to participate in other sports and community groups utilising the Club's facilities for team-building activities. Furthermore, the Club's hall and meeting rooms are made available to local organisations further fostering community engagement. The Club's overarching objectives include promoting the game of bowls and maintaining top tier bowling green surfaces in Canterbury, all while providing a space for small organisational meetings within the local community. To meet the needs of its current and prospective users, the Club must modernise its locker rooms, toilets, and meeting areas. The existing toilet block, dating back to the original construction, no longer adequately caters to the accessibility and comfort requirements of players. There are two steps leading down into the toilets which is particularly concerning, posing a significant barrier to individuals with mobility issues. Consequently, the Club intends to reconstruct the current toilet facilities. To achieve this and comply with building standards, the Club will be required to relocate the overhead wiring to make it underground wiring. This substantial project is a priority for the Club, which aims to execute it in incremental stages as funding and/or in-kind goods/services are secured. The project is in its initial stage, supported by a comprehensive fundraising plan. Rationale for staff recommendation: The project aligns strongly with the Te-Haumako-Te Whitingia-Strengthening Communities Together Strategy and the Physical Recreation and Sport Strategy. The grant will directly impact the Club's redevelopment programme. The grant will enhance the Club's ability to be inclusive and meet the needs of all who use the facilities. The Club is fiscally responsible and has a proven track record of delivery, ensuring they meet their outcomes within budget.
--	---	--

13. Waipapa Papanui-Innes-Central Community Board Area Report - April 2024

Reference / Te Tohutoro: 24/365043

Report of / Te Pou
Matua: Emma Pavey, Community Governance Manager Papanui-Innes-Central (Emma.Pavey@ccc.govt.nz)

Senior Manager /
Pouwhakarae: Andrew Rutledge, Acting General Manager Citizens and Community

1. Purpose of Report Te Pūtake Pūrongo

This report provides the Board with an overview on initiatives and issues current within the Community Board area.

2. Officer Recommendations Ngā Tūtohu

That the Waipapa Papanui-Innes-Central Community Board:

1. Receive the Waipapa Papanui-Innes-Central Community Board Area Report for April 2024.

3. Community Support, Governance and Partnership Activity

3.1 Community Governance Projects

Activity	Detail	Timeline	Strategic Alignment
Community Pride Garden Awards 2024	A joint venture between the Community Boards and the Christchurch Beautifying Association since 1997. The awards encourage civic pride and acknowledge those who have contributed to maintaining the image of Christchurch as the Garden City by beautifying their streets and gardens.	Certificates are currently being printed and posted out to recipients.	Resilient Communities Te Haumako Te Whitingia Strengthening Communities Together Strategy
Community Service Awards 2024	Community Service Awards give well-deserved recognition to the people who make our communities better places to live. They are a way of thanking and honouring volunteers who demonstrate dedication and passion, inspiring others to make service a central part of their lives.	Nominations have closed and are being processed for the Board to consider at a subsequent meeting.	Te Haumako Te Whitingia Strengthening Communities Together Strategy
Summer with your neighbours (SWYN)	SWYN is about bringing people closer together and celebrating the unique and diverse mix of each neighbourhood. Photos from recent events held in the community through the project are shown below.	Reimbursements are being processed. The last date for gatherings to be held was 31 March 2024 with all claims to be received by 10 April 2024.	Te Haumako Te Whitingia Strengthening Communities Together Strategy

• **Cherrywood Place - Summer with your Neighbours event**



On 3 March 2024 a Summer with your Neighbours barbeque event was held in Cherrywood Place, bringing people together in the fine late summer weather.



3.2 **Community Funding Summary**

The balance of the Board's funding pools at the time of writing is currently as follows subject to subtraction of the grants proposed through the reports to this meeting as shown:

2023/24 Waipapa Papanui-Innes-Central Discretionary Response Fund (DRF)		
Approved Board Projects:		
• Summer with your neighbours	\$4,500	
• Youth Recreation	\$9,000	
• Community Pride Garden Awards	\$700	
• Community Liaison	\$4,000	
• Youth Development Fund	\$7,500	
• Community Service Awards	\$2,500	
• Rangatahi Civic Awards	\$1,100	
AVAILABLE BALANCE (at time of writing):		\$77,622
Proposed DRF Grants (subject to approval at this meeting):		Recommended:
• Edgware Tennis towards the cost of a permanent drainage solution to storm-water run off		\$10,000
• Morrison Avenue Bowling Club (Inc) towards the Accessible Club Building project		\$15,000
Prospective remaining balance (if all recommendations accepted):		\$52,622
2023/24 Waipapa Papanui-Innes-Central Youth Development Fund (YDF)		
Approved under delegation since last report:		
• Grant to Amanda Watkins (as detailed in Attachment A)		\$200
AVAILABLE BALANCE (at time of writing):		\$3,100

3.3 Strengthening Communities Fund



This fund supports community-focused organisations whose projects contribute to the strengthening of community wellbeing in the Christchurch city area. Applications for the 2024/25 Strengthening Communities Fund opened on 4 March 2024 and will close on 12 April 2024. Information on what the fund covers, and the application process can be found at [this link](#).

3.4 The Mayor's Welfare Fund

The Mayor's Welfare Fund provides assistance to families and individuals in the community who are in extreme financial distress. It is a last resource when people have exhausted other appropriate sources such as Work and Income New Zealand (WINZ). The criteria and instructions on how to apply can be found here: [Mayors Welfare Fund - all you need to know](#)

3.5 Upcoming Community Events and Activities

- **Volunteer Events**

Visit [this link](#) for the variety of volunteer events held around the city, and [this link](#) to volunteer at a Council-produced event.

There is also information at [this link](#) on becoming a Graffiti Programme volunteer, or register at [this link](#) to join the Parks Volunteers Team.

Some planting events are [eligible for Children's University \(CU\) credits](#), and family-friendly. Or schools can be supported by the 'connect and grow' planting programme: [Manaaki Taiao – Nurture Nature](#).



- **FRESH Events 2024**

Information on events from Youth & Cultural Development (YCD) is available at [this link](#).

- **Other upcoming community events and festivals in the city**

Visit [this link](#) for the variety of community events and festivals held around the city. This also links to the [What's On](#) site, where can found one-off and regular events like:

- [Linwood Village Market](#) – 6 April & 4 May 2024, 10am to 1pm at the Linwood Community Arts Centre car park - Monthly community market: books, crafts, collectibles, plants, boutique op shop, This and That, and tiny fundraisers for local community projects.
- [Heritage Highlights: "Dear Sir: Please remove your pig..."](#) – 10 April 2024, 10.15-11.30am at Tūranga - Join Christchurch City Council Archivist Annabel Armstrong-Clarke to explore the life of an Inspector of Nuisances in early Christchurch through the Council archives.
- [Frontrunner Christchurch Marathon](#) – 21 April 2024, 7.30am to 2pm - It is renowned as one of the flattest and fastest courses in the world, but it is also one of the most scenic and supportive. The central city course takes in iconic Christchurch landmarks such as the Town Hall, Hagley Park, and the Avon River. The central city is open for business, please plan your travel on the day and be aware that there may be some delays. Traffic and transport restrictions will be in place from 5am to 1.30pm.
- [Red Zone roving bioblitz day one – 'Riverlution'](#) – 26 April 2024, 9am to 4pm - Meeting at Ōtakaro Orchard or joining in at any point along the way with the hikoi led by a team of rangers, community and scientists - follow the Ōtakaro Avon River as it meanders through the city, Avon Loop and Richmond areas. There will be frequent stops to take photos and observe nature. Entomologists will be sweep-netting and using beat trays to uncover the hidden biodiversity of invertebrates.
- [Wānanga Ikura with Para Kore](#) – 24 April 2024, 6pm at Riverlution Eco Hub



relaxed and enjoyable way to unwind after a busy day.

- [Phillipstown Community Hub Gala 2024](#) – 13 April 2024, 10am to 4pm – a celebration of Phillipstown Community Hub and the organisations that reside within it.

- [Open Christchurch 2024](#) – 3-5 May 2024, 9am to 5pm - Building owners/kaitiaki will throw open the doors to their special spaces at various venues across Christchurch, so that the public can have a nosey and experience great design first-hand. This is an opportunity to explore over 45 buildings of architectural excellence, in addition to designed landscapes throughout one weekend.

- [Thursday Evening Gardening Session](#) - Every Thursday evening until daylight savings at Riverlution Eco Hub & Richmond Community Garden.

Promoted as a





- [Eid al-Fitr Festival \(NZ Eid Day - Christchurch\)](#) – 14 April 2024, 2-7pm at the Christchurch Multicultural Recreation and Community Centre – join in celebrating this festive season filled with love, unity, and blessings.

- [Microvolunteering Day](#) – 15 April 2024 - recasting volunteering as an activity that need not be constrained by stereotypical views of volunteering being a time and commitment intensive activity.



- **Christchurch City Council Libraries Events**

Christchurch City Libraries run a wide range of classes and programmes both in libraries and through its learning centres for everyone from babies to seniors, with information at [this link](#).

The Libraries' Events Calendar can be found [here](#), and there are dedicated pages for significant events and related topics like:



- [ANZAC Day](#) - celebrated in Australia and New Zealand on 25 April. It is a time when we remember New Zealanders and Australians who fought in wars around the world - whether through attending a dawn service and parade, talking to older relatives about their memories, buying and wearing a red poppy, making Anzac biscuits, or simply remembering our family members who fought in wars.

Poppy Day is the Friday before ANZAC Day and is the day when people sell red poppy badges to raise funds for war veterans.

- [New Zealand Music Month - Te Marama Puoro o Aotearoa](#) - Christchurch City Libraries celebrates NZ Music Month during May every year.

3.6 Participation in and Contribution to Decision Making

3.6.1 Report back on other Activities contributing to Community Board Plan



all its vibrancy and is delivered by Shirley Community Trust, supported by the Council.

- **Shirley Shine 2024**

Shirley Shine 2024 was reported to be a blast, thanks to the vendors, stall holders and volunteers who made it happen. The event celebrates the Shirley community in



- **Blessing for the opening of the Women's Centre's new premises**



A blessing for the official opening of the Women's Centre's new premises at 48 Fitzgerald Avenue in Christchurch Central was held on 21 March 2024.

The [Women's Centre](#) works for the well-being of all women, by assisting, encouraging and supporting them to make informed choices in their lives. Established in 1986, the Centre was originally set up to support women on their journey leaving the Women's Refuge, and once the Refuge established its own support system, the focus of the Women's Centre shifted to serving all Christchurch women.

The Centre is a safe space and drop-in centre for women to access resources, courses, support groups, workshops, counselling, and information about further support services.

The Board Chair of the Women's Centre in her opening speech thanked staff, supporters and volunteers for their amazing work and ongoing support. She also thanked the Board for their Better Off funding support for the relocation and set up costs of the new premises, developing as it did through discussions between the Centre and Council staff assessing the need for, and implications of, securing larger premises.



- **Richmond Gala**

Held on Saturday, 23 March 2024, Richmond Gala is a showcase of all the amazing happenings in and around our Richmond, and a collaborative event hosted by Avebury House, Richmond Community Garden and "We Are Richmond". It was reported to be a super day, with many wonderful stalls, volunteers, entertainers,



and workshops, the entire riverside corner was humming.



• **Parks Team Update – Essex and Rutland Reserves**

The Community Partnerships Ranger has provided an update on the maintenance session held in Essex Reserve with the Garden Facilitator for Philipstown Hub, local community members, and the Sailsbury St Foundation. The focus for that being removing weeds around native plantings.

They also recently held two maintenance sessions in Rutland Reserve with a corporate group (Verizon Connect), together spreading ten cubic metre of mulch around plantings completed in the reserve late last year that had become overgrown with grass and weeds.



• **Liaison Meeting with Ward School Principals and Members of Parliament**

On the morning of 22 March 2024, the Board hosted School Principals and Members of Parliament from the Board area in its Boardroom for roundtable discussion of local issues. The attendees also heard from the Council Community Funding Advisor administering the Mayor's Welfare Fund about how the Fund can assist struggling families.



The Principal at Te Oraka Shirley Intermediate, Brett Cooper, kindly spoke to a letter of thanks he'd written on behalf of the school community to the Board for their support though the Board's initiative to contribute to remediating their pools so they can be used by students and the local community. He noted there that:

"Your generous grant of \$60 000 will significantly help us to move ahead with our restoration plans. The pools will benefit local schools which include Pareawa Banks Ave and Shirley Primary. This will enable us to teach swimming skills and water safety. Also, local families will be able to make use of the pools outside of school hours.

We will share the progress we make with you so you can see firsthand how your support has made a tangible impact on the lives of others."

3.6.2 Council Engagement and Consultation



- [Draft Long Term Plan 2024-34](#) (closes 21 April 2024)

The Long Term Plan (LTP) sets the direction for all the activities and services the Council provides, and how it will pay for these services over the next 10 years.

The Council is asking what residents think of its proposed plan – whether it has the balance right, whether it has prioritised the right things, and about its alternative options.

In this LTP the Council has focused on developing a deliverable capital programme - proposing to spend the \$6.5 billion over the next 10 years across a range of activities, including some key areas that residents told it are important through our Residents Surveys, and our early engagement on the LTP.

The Council's [budget search tool](#) shows how much money it is spending on projects over the next ten years, and where.

- [Ōtākaro Avon Stormwater Management Plan](#) (closes 22 April 2024)

Stormwater Management Plans (SMPs) outline how we can reduce contamination and progressively improve stormwater discharges.



- [Tree Planting Plans](#)

The Council is seeking feedback on the following plans until 9 April 2024, with more plans being released in the coming weeks:

- Arran Playground - Linwood
- Birkdale Reserve - Shirley
- Francis Reserve - Hoon Hay
- Highsted Reserve - Bishopdale

- Jones Reserve - Templeton
- Juniper Reserve - Burnside
- Paprika Reserve - Bishopdale
- Radley Playground - Woolston
- Sea Eagles Reserve - North New Brighton
- Spreydon Domain - Hoon Hay
- Scott Park - Halswell

- **Other consultations in other parts of the district**

- [Aranui Streets Project](#) (closes 15 April 2024)
- [Purau Reserve](#) (early feedback closes 7 April 2024; consultation approx. May/June)
- [Arthur Street parking improvements](#) (closes 7 April 2024)

3.7 Governance Advice

3.7.1 Customer Service Request (CSR) Report for the Papanui-Innes-Central Wards

Refer to **Attachment B** for the 1 February – 29 February 2024 statistics, providing an overview of the number of CSRs that have been received, including the types of requests being received and a breakdown of how they are being reported.

[Snap Send Solve](#) is the smartphone app the Council offers to help make reporting issues easy, and it is still possible to [report issues online](#), by calling Council on 03 941 8999 or visiting one of the Council's [Service centres](#).

3.7.2 Climate action

The Board's vision statement reflects its commitment to supporting the [Ōtautahi Christchurch Climate Resilience Strategy's climate goals](#) and the [Ōtautahi-Christchurch Urban Forest Plan](#).

Another resource for understanding the Council's targets, what it's doing, how emissions are tracking, and finding relevant community events and activities, is the [Council's Climate Action webpage](#). At present relevant community events in the Board area include 'Repair Revolution' at Riverlution Eco Hub and Richmond Community Garden.

There is information on the page regarding reducing landfill, which reduces the emissions landfill produce. It saves ratepayers' money, and it's a great time, following the [kerbside changes](#), to [find out more about how to 'bin good' and download the handy app here](#).



3.7.3 Community Patrols

The [Community Patrols of New Zealand website](#) hosts a wealth of information relevant to what they do in helping to build safer communities, becoming a patroller, and setting

up a patrol. Patrols in the Board area include the Christchurch North and City Park community patrols. Their [statistical information](#) can be found on the website.

3.7.4 Planned road works and closures

Planned road works and closures are indicated on the map at the [Traffic Updates page at this link](#). Additionally, a Smartview of nearby road works and closures is available at the following link: <https://smartview.ccc.govt.nz/travel/roads>.

- [Public Notices](#) – *proposed temporary road closures for events*
 - [Anzac Day Parades](#)
 - [University Graduation Parades](#)
 - [Christchurch Marathon 2024](#)



3.7.5 School travel

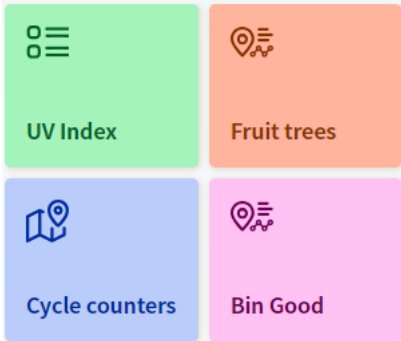
The Council offers a wealth of resources [at this link](#) relevant to how together we can make it way safer and easier for more children to walk, bike and scooter to school.

3.7.6 Travel Planning

The Council also offers free city travel planning to help organisations, businesses and staff get to know their travel options, with personalised journey planning sessions, advice, practical resources and services such as Metro incentives for taking the bus, and onsite bike workshops. Information is available [at this link](#), which notes that over 50 workplaces have been supported since 2016, assisting thousands of staff across the city.

3.7.7 SmartView

The Council’s [SmartView page](#) gives users access to a range of real-time information about the city, including data on how to find local mountain bike tracks and also check that they are open, the number of spaces available in car park buildings, the nearest bus stop and the time of the next arrival, air quality, how to get to places, events, where to see street art, weather updates and the latest airport arrivals and departures.



4. Advice Provided to the Community Board Ngā
 Kupu Tohutohu ka hoatu ki te Poari Hapori

4.1 Start Work Notices (SWN)

SWN relating to the Board area are separately circulated to the Board. All Board area and city-wide start work notices can be found at [this link](#). Recent SWN relating to the Board area are:

- Ferry Road, Ensors Road and Aldwins Road intersection - upgrade investigations (*circulated 2 April 2024*)
- Shirley Road, Hills Road and Warrington St intersection - upgrade investigations (*circulated 2 April 2024*)

- Stanmore Road and Gloucester Street - Traffic Signals Upgrade - Night Works (*circulated 27 March 2024*)
- Major Cycle Route (MCR) Northern Line Cycleway - railway crossing upgrade (*circulated 27 March 2024*)
- Bishopdale investigation works - Harewood Road between Restell Street and Harris Crescent (*circulated 26 March 2024*)
- Matsons Avenue - investigation works (*circulated 26 March 2024*)
- Bishopdale investigation works – Greers Road, Langdons Road, Reynolds Ave (*circulated 15 March 2024*)
- Bishopdale investigation works – Harewood Road and Bishopdale roundabout (*circulated 15 March 2024*)
- Harewood Road - investigation work (*circulated 14 March 2024*)
- Major Cycle Route - MCR Northern Line Cycleway - railway crossing upgrade (*circulated 14 March 2024*)
- High Street Upgrade between Tuam and St Asaph Streets (*circulated 14 March 2024*) – update provided on this by email on 19 March 2024 that: due to recent rain causing wet ground conditions, the laying of paving tiles alongside Ara was a day behind schedule - accordingly, Stage 2 is signalled to commence 21 March 2024.
- McSaveney's Road - drain renewal (*circulated 13 March 2024*)
- Papanui Memorial Reserve - paving renewals (*circulated 7 March 2024*)

4.2 **Orion update on works to install a new underground power cable between Bromley and Milton Street**

Orion's Community Engagement Lead on 27 March 2024 provided the below update on these works:

We have successfully installed around 5.5km of new power cable from Bromley through to Ensors Road in Woolston, and around 2.0km of cable along Brougham Street from Opawa Road, via Burlington Street to Milton Street. Our current works on Brougham Street, near Burlington Street are due to be finished this week (weather depending).

We have one final section of cable to complete. This requires us to dig a trench on Ensors Road from Brougham Street to Sullivan Avenue. We can then install the final length of cable from a joint bay near Sullivan Avenue to a joint bay on Brougham Street, between Opawa Road and Wilsons Road. The cable will be pulled through the ducts we installed on Brougham Street in late 2023. Once the cable is installed, we can join it to previously installed cables, and the full cable route will be complete.

Upcoming works on Ensors Road

To safely install the final section of cable on Ensors Road, traffic management will be in place from early-April:

- *Ensors Road will be reduced to one lane southbound (travelling towards Brougham Street) from around MacKenzie Avenue.*
- *Southbound traffic will still be able to turn left and right from Ensors Road onto Brougham Street, although the number of lanes will be reduced.*
- *Sullivan Avenue and MacKenzie Avenue will remain open.*
- *The northbound lanes on Ensors Road (travelling towards Ferry Road) will not be affected.*

- *There will be no on-street parking available where we are working (outside the Ara Woolston Campus).*

These works are planned to start in early-April and be completed in June 2024.

We have delivered a start work notice to residents around the work area and have notified the Ara Woolston Campus of the upcoming works.

In early May, we will need to close the southbound lanes on Ensors Road for three nights to deliver the new cable to the site. The cable arrives on large drums and is craned into position. We need to close the road to safely accommodate the crane on site. The southbound lanes will be closed from 9pm to 5am for between 3-4 hours while we unload the cable. This closure will affect access to MacKenzie Avenue and Sullivan Avenue at night. Detour routes will be signposted.

Upcoming works on Brougham Street

To complete the cable installation there will be some final works on Brougham Street around the joint bay between Opawa Road and Wilson Road. Once we’ve installed the final section of cable and joined this to previously installed cables, we will be able to close the joint bay and reinstate the road.

We will complete works around the joint bay largely at night, maintaining one lane in each direction on Brougham Street. During the day, Brougham Street will be two lanes in each direction. The intersections at Opawa Road and Waltham Road will not be affected by the works around the joint bay.



We understand these works have been impactful, particularly for residents affected by the night works. We have appreciated the patience and understanding of local residents who have been very accommodating. While we all benefit from a strengthened electricity network, we do understand that construction works outside homes is an inconvenience.

4.3 Memoranda

Memoranda related to matters of relevance to the Board have been separately circulated for the Board’s information and are listed below.

- CCC: Shirley/Marshland/New Brighton/North Parade Safety Improvements (*circulated 2 April 2024*)

Attachments Ngā Tāpirihanga

No.	Title	Reference	Page
A 	Youth Development Fund Grant under Delegation for Amanda Watkins	24/423828	74
B 	Customer Service Request Report - February 2024	24/445495	76

Signatories Ngā Kaiwaitohu

Authors	Mark Saunders - Community Board Advisor Trevor Cattermole - Community Development Advisor Stacey Holbrough - Community Development Advisor Helen Miles - Community Recreation Advisor Lyssa Aves - Support Officer Emma Pavey - Manager Community Governance, Papanui-Innes-Central
Approved By	Emma Pavey - Manager Community Governance, Papanui-Innes-Central Matthew McLintock - Manager Community Governance Team John Filsell - Head of Community Support and Partnerships

Memos

Christchurch
City Council 

Memo

Date: 13 March 2024
From: Lyssa Aves, Support Officer Papanui-Innes-Central
To: Emma Pavey, Community Governance Manager Papanui-Innes-Central
Cc: Trevor Cattermole, Stacey Holbrough, Helen Miles, Mark Saunders
Reference: 24/418904

Papanui-Innes-Central Youth Development Fund 2023-24 Application - Amanda Novais Watkins

1. Application Details Ngā Taipitopito Tono

Date of Decision Meeting: 14 March 2024

Venue: Papanui Library and Service Centre

Date Application Received: 28 February 2024

Applicant: Amanda Novais Watkins

Application Assigned to: Lyssa Aves

Total Budget Costs: \$8,800

Funding Requested: \$300

Staff Recommendations: That the following is paid:

- \$200 for Amanda Novais Watkins towards costs associated with being part of the Anna Lee School of Dance She Shines On dance tour in New York and Orlando from 11 -26 April 2024.

2. Background Te Horopaki

- 2.1 This Positive Youth Development Application is from Amanda Novais Watkins to attend the Anna Lee Dance Studio She Shines Dance tour in New York and Orlando from 11 -26 April 2024.
- 2.2 Staff support this application as it meets all Positive Youth Development criteria.
- 2.3 The applicant is 13 years old and a Year 9 student at St Andrews College school. Amanda currently lives in the Papanui ward.
- 2.4 Amanda has been involved in dance since she was three years old and is currently studying jazz, ballet, and contemporary dance.
- 2.5 The Community Board supported one member (who lives in the Central Ward) in October for this trip.
- 2.6 The 'She Shines On' dance tour gives participating students a fully immersive dance experience. Throughout the tour, students will immerse themselves completely in the dynamic dance scene of New York and Orlando.
- 2.7 The dancers will take classes at prestigious dance schools and attend Broadway shows in New York. In Orlando they will take workshops and perform at Disneyworld and Universal Studios.

Page 1

Item 13

Attachment A

Memos

Christchurch
City Council 

Importantly, students will proudly showcase New Zealand's talent on an international platform and perform at these esteemed venues, collaborating with fellow dancers as part of a team effort.

- 2.8 The dance tour is an incredible opportunity for young performers considering their career options in the performing arts industry. Dancers from previous tours have come back inspired to pursue their dreams as they gained confidence and developed important interpersonal and dance skills.
- 2.9 The cost per person for the tour is \$8,800 in total. Up to this point, the school has accumulated \$6,100 for their twenty-two dancers through diverse fundraising efforts, including a bake sale, quiz night and garage sale. This is the first time Amanda Novais Watkins has applied for Youth development funding.

The total cost per person for the trip:

EXPENSES	Cost (\$)
Airfare, Tour Cost, Uniforms, Accommodation, Costumes	\$8,800
Total	\$8,800

3. Summary He Whakarāpopototanga

- 3.1 Staff recommend \$200 from the 2023–24 Positive Youth Development Fund be granted to Amanda Novais Watkins towards costs associated with being part of the Anna Lee School of Dance She Shines On dance tour in New York and Orlando from 11 -26 April 2024. .

4. Decision of Community Governance Manager – Emma Pavey Te Whakataunga a te Kaiwhakahaere Kāwana ā-Hapori

- 4.1 Approved.

Attachments Ngā Tāpirihanga

There are no attachments to this memo.

Signatories Ngā Kaiwaitohu

Author	Lyssa Aves - Support Officer
Approved By	Emma Pavey - Manager Community Governance, Papanui-Innes-Central

Ticket Report

01 02 2024 - 29 02 2024

Filter by Ward

Papanui-Innes-Central

Filter by month

2024 (Year) + February (Month)

Tickets Reported in February 2024

4590

Reported Tickets last month

Status as of Report Date

Pending - Programmed ...

89

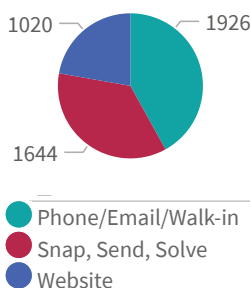
Open

975

Closed/Resolved

3526

Channels



Currently Open Tickets

975

Open Tickets*

18

avg open ticket age (days)

494

Escalated tickets*

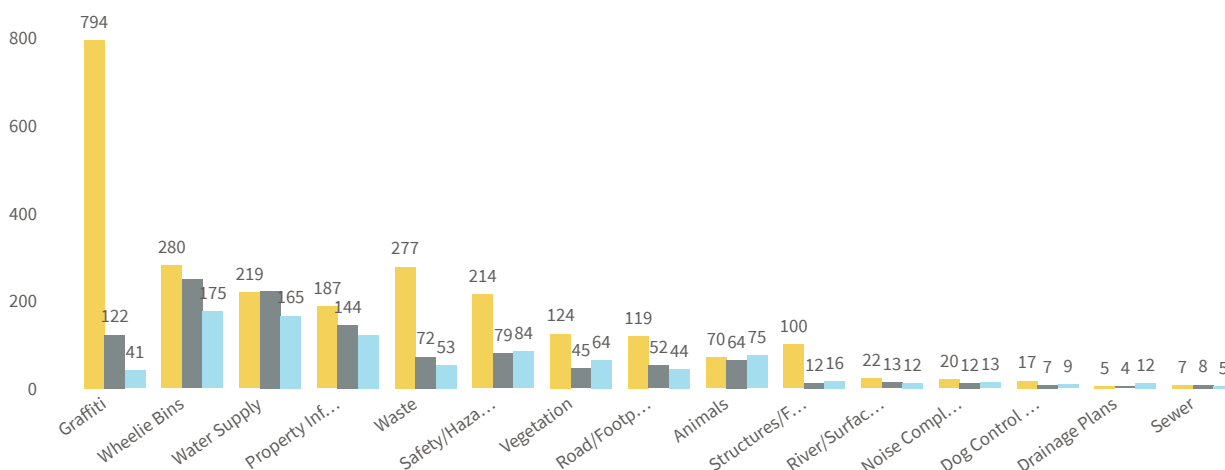
6369

Total Currently Open Tickets

*Open as of report date, reported during filtered period

Top 15 Incident Categories

Central Innes Papanui



Top 10 Object Categories

# Tickets	ObjectCategory
957	Graffiti
426	Water Leak
353	Litter
253	Bin Not Collected
221	Damaged Bin
157	Residential LIM
151	Residential Property Files
137	Trees
120	Signs
109	Missing Bin

Report date:

18 Mar 2024

14. Elected Members’ Information Exchange Te Whakawhiti Whakaaro
o Te Kāhui Amorangi

This item provides an opportunity for Board Members to update each other on recent events and/or issues of relevance and interest to the Board.

Karakia Whakamutunga

Unuhia, unuhia Unuhia ki te uru tapu nui Kia wātea, kia mā mā, te ngākau, Te tinana te wairua i te ara takatā Koia rā e Rongo, whakairia ake ki runga Kia tina! TINA! Hui e! TĀIKI E!	<i>Draw on, draw on, Draw on the supreme sacredness To clear, to free the heart, the body and the spirit of mankind Rongo, suspended high above us (i.e. in ‘heaven’) Draw together! Affirm!</i>
--	--