

Finance and Performance Committee

MINUTES ATTACHMENTS

Date:Wednesday 27 March 2024

Time:9.30 am

Venue:Council Chambers, Civic Offices,
53 Hereford Street, Christchurch

TABLE OF CONTENTS NGĀ IHIRANGI	PAGE
11. ChristchurchNZ Holdings Ltd - Quarter 2 performance report to 31 December 2023	
A. ChristchurchNZ Holdings Ltd - Presentation to Council.....	3

ChristchurchNZ

Economic Development Agency

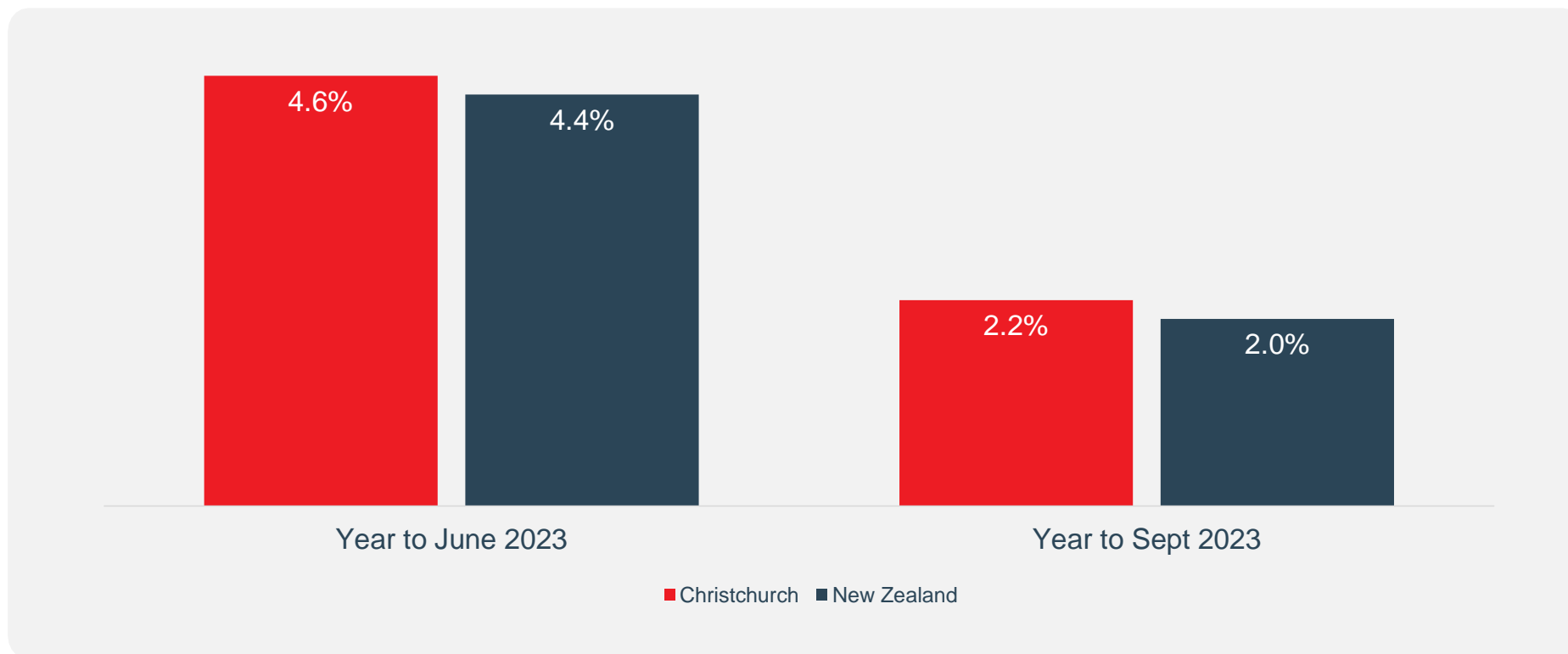
HALF YEAR REPORT
to 31 December 2023

Paul Bingham, Deputy Chair
Ali Adams, CEO



ECONOMIC UPDATE

Average annual GDP growth Year to September 2023 vs previous year



CHRISTCHURCHNZ PURPOSE

ChristchurchNZ is the city's **economic development agency**, responsible for delivering sustainable economic growth for Ōtautahi Christchurch on behalf of Christchurch City Council.

WHAT WE DO

ChristchurchNZ plays a crucial role in helping the Council deliver on its undertakings for a **thriving prosperous city** and **green liveable city**, which is clearly reflected in our refined strategic outcomes:



PRODUCTIVITY

& GDP OUTPUT



LIVEABILITY



ATTRACTIVENESS

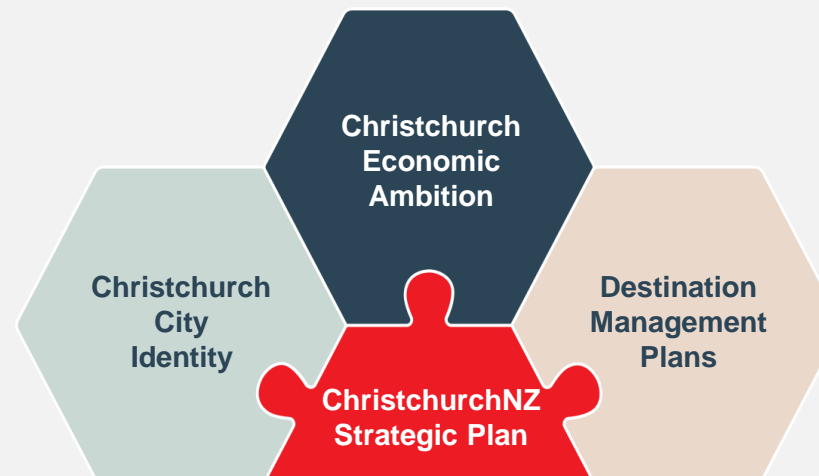


STRATEGIC DIRECTION

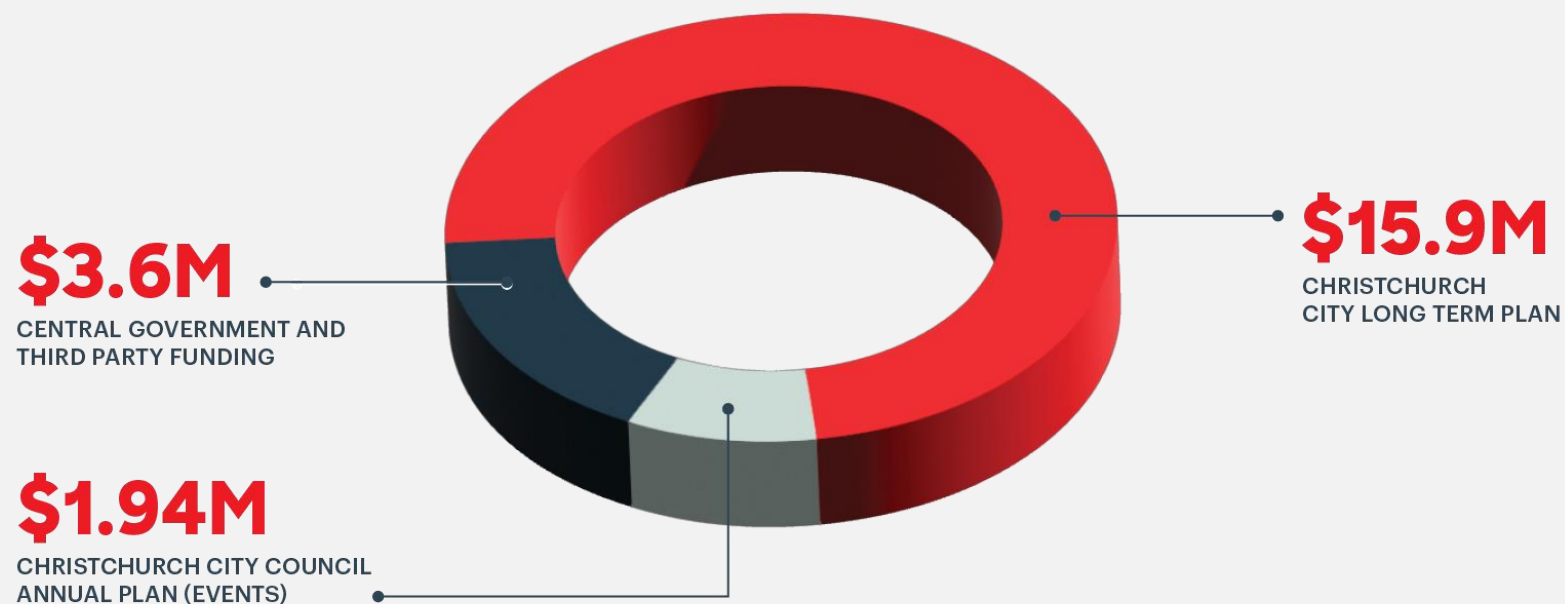
A strategic framework underpins work programmes

Our operating principles

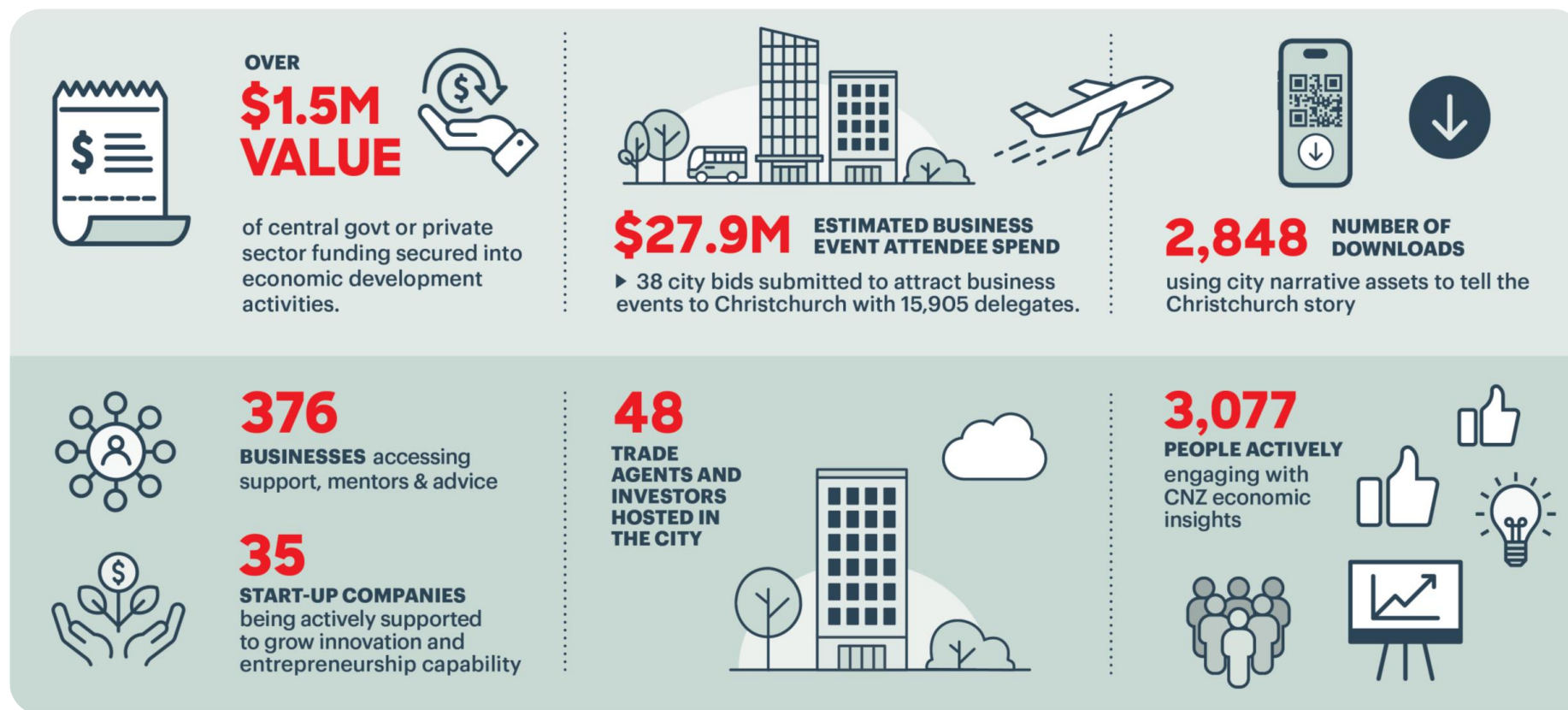
- Balanced
- Intervention agency
- Facilitator and partner
- Strategic and Impactful
- Collaboration



CNZHL FUNDING 2023/24



WHAT OUR WORK SUPPORTS: LEVELS OF SERVICE



HALF YEAR KEY PERFORMANCE INDICATORS

Key Performance Indicator	2023/2024 Target	Half-year Results
Long-lasting job creation supported by ChristchurchNZ	160 FTE jobs	57 FTE jobs
Short-term job creation supported by ChristchurchNZ through events, urban development, and screen activity	430 FTE jobs	254 FTE jobs
Estimated value of GDP contribution attributable to ChristchurchNZ	\$50m	\$17.2m
Contribution to visitor spend supported by ChristchurchNZ	\$30m	\$23.2m
Value of investment into Christchurch supported by ChristchurchNZ (excluding local government)	\$55m	\$4.7m



INNOVATION AND BUSINESS GROWTH

WHAT WE DELIVERED HALF YEAR HIGHLIGHTS

BRIDGEWEST CAR-T CENTRE

- ChristchurchNZ facilitated MOU to develop a world-class multi-disciplinary modern cancer treatment centre.
- Potential \$500 million over 2.5 years from construction impact alone.

INNOVATION AND BUSINESS GROWTH

WHAT WE DELIVERED HALF YEAR HIGHLIGHTS

LEAFT FOODS

- \$2 million Callaghan Innovation grant secured with Business Growth team support.
- Funding will help Leaft commercialise their proprietary leaf-derived protein technology.
- Another \$175,000 in Callaghan grants awarded over the last quarter to several businesses.

URBAN DEVELOPMENT



WHAT WE DELIVERED HALF YEAR HIGHLIGHTS

NEW BRIGHTON REVITALISATION

- Building consent issued for Te Pākau Maru: 63 terraced homes on Beresford St.
- Local owners Harris family rejuvenating commercial buildings and mall.
- Joint private/public sector working group established that includes Cr Donovan.

URBAN DEVELOPMENT



WHAT WE DELIVERED HALF YEAR HIGHLIGHTS

SYDENHAM YARD

- +60-80 New homes in Sydenham Yard residential development (valued at 89m)
- NIWA research facility
- Three developers shortlisted for neighbourhood development.
- Critical infrastructure upgrades underway valued at more than \$10m



DESTINATION & ATTRACTION



WHAT WE DELIVERED HALF YEAR HIGHLIGHTS

CRUISE COMMUNITY RELATIONS

- Expected 170,000 cruise passengers for 23/24 season
- Transport plan revised to avoid Lyttelton congestion.
- Lyttelton community satisfaction markedly improved.



DESTINATION & ATTRACTION



WHAT WE DELIVERED HALF YEAR HIGHLIGHTS

SAILGP

- Event secured with almost double spectator capacity.

**THANK YOU
& QUESTIONS**