

Te Hononga Council - Papatipu Rūnanga Committee AGENDA

Notice of Meeting:

An ordinary meeting of Te Hononga Council - Papatipu Rūnanga Committee will be held on:

Date: Wednesday 21 March 2018
Time: 5pm
Venue: Council Chambers, Level 2, Civic Offices,
53 Hereford Street, Christchurch

Membership

Members

Mayor Lianne Dalziel (Chairperson)
Dr Te Maire Tau - Te Ngāi Tūāhuriri Rūnanga (Chairperson)
Councillor Vicki Buck
Councillor Jimmy Chen
Councillor Phil Clearwater
Councillor Pauline Cotter
Councillor David East
Councillor Raf Manji
Deputy Mayor Andrew Turner
Rei Simon - Wairewa Rūnanga
Elizabeth Cunningham - Te Rūnanga o Koukourārata
David Perenara-O'Connell - Te Taumutu Rūnanga
Gail Gordon - Te Hapū o Ngāti Wheke
Rik Tainui - Ōnuku Rūnanga

16 March 2018

Principal Advisor

Gabrielle Huria

Principal Advisor Ngai Tahu
Relationships

Aidan Kimberley

Committee and Hearings Advisor
941 6566

aidan.kimberley@ccc.govt.nz

www.ccc.govt.nz

Note: The reports contained within this agenda are for consideration and should not be construed as Council policy unless and until adopted.
If you require further information relating to any reports, please contact the person named on the report.

To view copies of Agendas and Minutes, visit:

<https://www.ccc.govt.nz/the-council/meetings-agendas-and-minutes/>

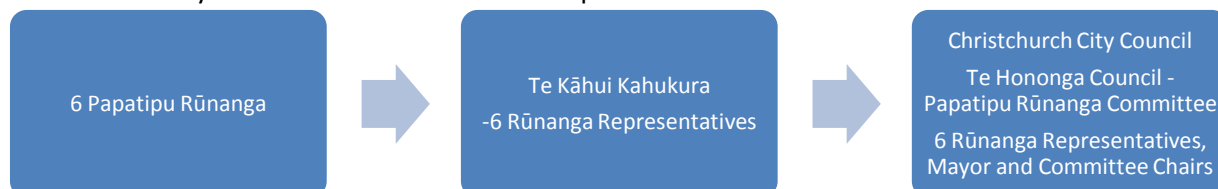
Te Hononga Council – Papatipu Rūnanga Committee - Terms of Reference

Chair	Mayor Dalziel and Dr Te Maire Tau
Membership	<p>Deputy Mayor Turner</p> <p>The Chairpersons of the following committees:</p> <ul style="list-style-type: none"> • Finance and Performance Committee • Innovation and Sustainable Development Committee • Social and Community Development Committee • Multicultural Subcommittee • Regulatory Performance Committee • Infrastructure, Transport and Environment Committee <p>The Chairperson (or alternate) of</p> <ul style="list-style-type: none"> • Te Rūnanga o Wairewa • Te Ngāi Tūāhuriri Rūnanga • Te Rūnanga o Koukourāta • Te Taumutu Rūnanga • Te Hapū o Ngāti Wheke • Ōnuku Rūnanga
Quorum	Half of the members if the number of members (including vacancies) is even, or a majority of members if the number of members (including vacancies) is odd.
Meeting Cycle	Quarterly, with additional meetings as required.
Reports To	Council

Context

There are four Rūnanga whose takiwā or territories lie within the Christchurch City Council's area of jurisdiction. Two, Te Taumutu Rūnanga and Te Ngāi Tūāhuriri Rūnanga, have boundaries that include Christchurch City but also extend beyond the City Council's jurisdiction.

Representatives from each Rūnanga come together to form Te Kāhui Kahukura, a body which has the authority to exercise decision making powers on behalf of Ngā Papatipu Rūnanga. Through its various regulatory functions, such as District Planning and others prescribed by the Resource Management Act, the Christchurch City Council has a direct relationship with Te Kāhui Kahukura.



In this context, the Christchurch City Council established Te Hononga Council - Papatipu Rūnanga Committee, which includes representatives from the Council and the six Rūnanga, to further enhance the relationship between the Council and Ngāi Tahu.

There are three intrinsic values which are fundamental to Ngā Papatipu Rūnanga. These are protecting and enhancing water quality, protecting Māori Reserve Land, and safeguarding the interests of future generations. These are closely aligned with three equivalent values held by the Christchurch City Council. The Council has statutory responsibility for meeting the needs of future generations, providing safe drinking

water and protecting its parks and reserves. The committee will work to seek alignment of these values and work towards them for the benefit of everyone in Christchurch and Banks Peninsula.

The takiwā of the six Papatipu Rūnanga was described Schedule 1 of the Te Rūnanga o Ngāi Tahu Act 1996, which has since been superseded by the Te Rūnanga o Ngāi Tahu (Declaration of Membership) Order 2001:

Te Ngāi Tūāhuriri Rūnanga: The takiwā of Te Ngāi Tūāhuriri Rūnanga centres on Tuahiwi and extends from the Hurunui to Hakatere, sharing an interest with Arowhenua Rūnanga northwards to Rakaia, and thence inland to the Main Divide.

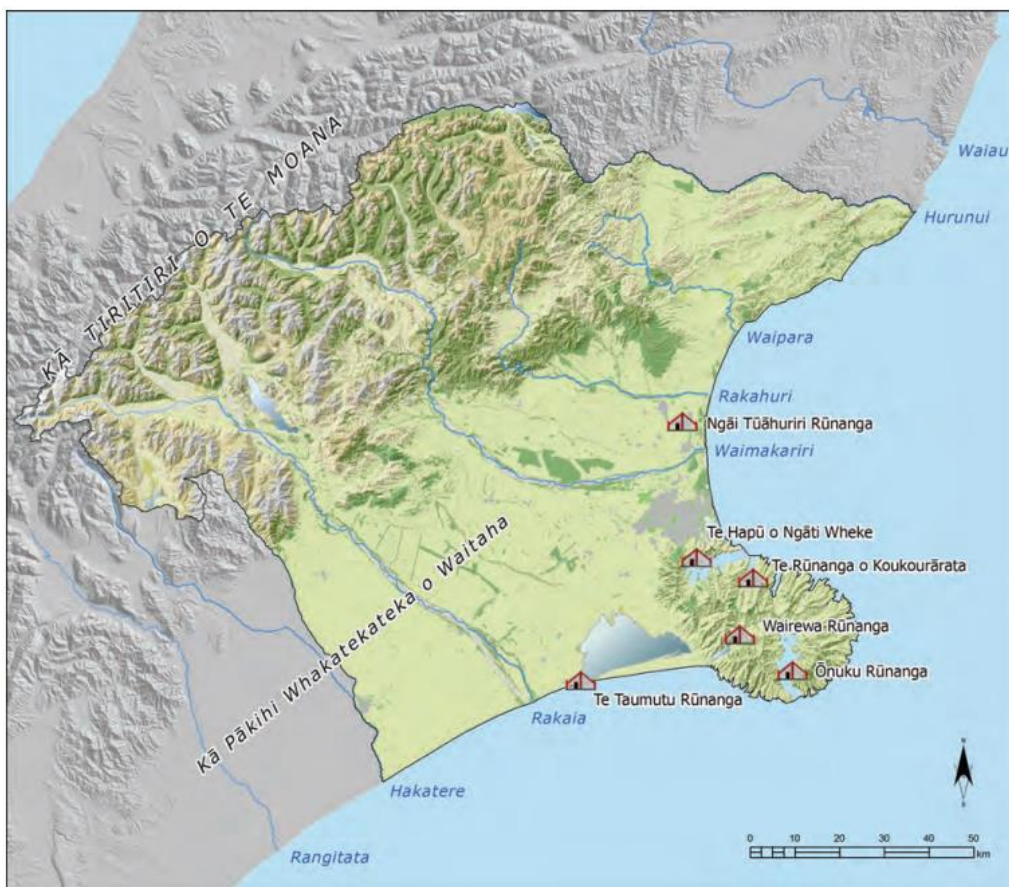
Rapaki Rūnanga: The takiwā of Rapaki Rūnanga centres on Rapaki and includes the catchment of Whakaraupo and Te Kaituna.

Te Rūnanga o Koukourārata: The takiwā of Te Rūnanga o Koukourārata centres on Koukourārata and extends from Pohatu Pā to the shores of Te Waihora including Te Kaituna.

Wairewa Rūnanga: The takiwā of Wairewa Rūnanga centres on Wairewa and the catchment of the lake Te Wairewa and the hills and coast to the adjoining takiwā of Koukourārata, Onuku Rūnanga, and Taumutu Rūnanga.

Te Rūnanga o Ōnuku: The takiwā of Te Rūnanga o Ōnuku centres on Ōnuku and the hills and coasts of Akaroa to the adjoining takiwā of Te Rūnanga o Koukourārata and Wairewa Rūnanga.

Taumutu Rūnanga: The takiwā of Taumutu Rūnanga centres on Taumutu and the waters of Te Waihora and adjoining lands and shares a common interest with Te Ngāi Tūāhuriri Rūnanga and Te Rūnanga o Arowhenua in the area south to Hakatere.



Responsibilities

Te Hononga Council - Papatipu Rūnanga Committee is responsible for the following:

- Leading the development of an enduring collaborative relationship between the Council and Ngā Papatipu Rūnanga.
- Building shared understanding and strong coordinated leadership on matters of mutual interest within the respective areas of jurisdiction.
- Having oversight of, and providing advice and assistance to the Council on, matters of significance or priority to Māori, and to inform Council decision making.
- Receiving regular updates from staff on Council programmes and projects of significance or priority to Māori.
- Operating in accordance with the Relationship Agreement between Christchurch City Council and Ngā Papatipu Rūnanga signed on 15 December 2016.

Delegations

- This Committee can make recommendations to the Council but does not have delegated authority to make formal decisions on behalf of the Council.

Resourcing

- The Principal Advisor Ngāi Tahu Relationships will act as the Principal Advisor to the Committee.
- A Senior Advisor also forms part of the Ngāi Tahu Māori Relationships team.
- A Committee Advisor from the Hearings and Council Support Team will provide administrative and procedural support to the Committee.
- All three of these positions will be provided by the Council.
- An annual budget allocation is also made in accordance with the work programme.

Part A	Matters Requiring a Council Decision
Part B	Reports for Information
Part C	Decisions Under Delegation

TABLE OF CONTENTS

C	1.	Apologies.....	7
B	2.	Declarations of Interest.....	7
C	3.	Confirmation of Previous Minutes	7
B	4.	Public Forum	7
B	5.	Deputations by Appointment.....	7
B	6.	Presentation of Petitions	7

STAFF REPORTS

C	7.	Update on Work Programme to Address Runanga Priorities	13
C	8.	Overview of the Draft 2018-2028 Long Term Plan and Consultation Process	19
B	9.	Other Business	21

1. Apologies

At the close of the agenda, an apology had been received from Rei Simon (Wairewa Rūnanga).

2. Declarations of Interest

Members are reminded of the need to be vigilant and to stand aside from decision making when a conflict arises between their role as an elected representative and any private or other external interest they might have.

3. Confirmation of Previous Minutes

That the minutes of the Te Hononga Council – Papatipu Rūnanga Committee meeting held on [Tuesday, 3 October 2017](#) be confirmed (refer page 8).

That the minutes of the Te Hononga Council – Papatipu Rūnanga Committee meeting held on Tuesday, 3 October 2017 be confirmed.

4. Public Forum

A period of up to 30 minutes may be available for people to speak for up to five minutes on any issue that is not the subject of a separate hearings process.

It is intended that the public forum session will be held at the start of the meeting.

5. Deputations by Appointment

There were no deputations by appointment at the time the agenda was prepared.

6. Presentation of Petitions

There were no petitions received at the time the agenda was prepared.

Te Hononga Council - Papatipu Rūnanga Committee OPEN MINUTES

Date: Tuesday 3 October 2017
Time: 4:05pm
Venue: Council Chambers, Level 2, Civic Offices,
53 Hereford Street, Christchurch

Present

Members

Mayor Lianne Dalziel (Chairperson)
Dr Te Maire Tau - Te Ngāi Tūāhuriri Rūnanga (Chairperson)
Councillor Vicki Buck
Councillor Jimmy Chen
Councillor Pauline Cotter
Councillor David East
Councillor Raf Manji
Deputy Mayor Andrew Turner
Rei Simon - Wairewa Rūnanga
Karaitiana Taiuru - Te Rūnanga o Koukourārata
Elizabeth Brown - Te Taumutu Rūnanga
Rik Tainui - Ōnuku Rūnanga

3 October 2017

Principal Advisor

Gabrielle Huria
Principal Advisor Ngai Tahu
Relationships

Aidan Kimberley
Committee and Hearings Advisor
941 6566
aidan.kimberley@ccc.govt.nz
www.ccc.govt.nz

To view copies of Agendas and Minutes, visit:
www.ccc.govt.nz/Council/meetingminutes/agendas/index

-
- Part A **Matters Requiring a Council Decision**
Part B **Reports for Information**
Part C **Decisions Under Delegation**
-

The agenda was dealt with in the following order.

1. Apologies

Part C

Apologies

Committee Resolved THCP/2017/00028

That the apologies from Councillor Clearwater, Elizabeth Cunningham and Gail Gordon be accepted.

Chairperson Dalziel/Chairperson Tau

Carried

2. Declarations of Interest

Part B

There were no declarations of interest recorded.

3. Confirmation of Previous Minutes

Part C

Committee Resolved THCP/2017/00029

Committee Decision

That the open and public excluded minutes of Te Hononga Council – Papatipu Rūnanga Committee meeting held on Thursday, 29 June 2017 be confirmed.

Chairperson Tau/Chairperson Dalziel

Carried

4. Public Forum

Part B

There were no public forum presentations.

5. Deputations by Appointment

Part B

There were no deputations by appointment.

6. Presentation of Petitions

Part B

There was no presentation of petitions.

Karaitiana Taiuru joined the meeting at 4:10 pm.

7. Update on work programme to address Runanga priorities

Committee Comment

The Committee was informed that Nga Rūnanga might consider negotiating a cost-sharing model with the Council for infrastructure projects such as the Akaroa Wastewater scheme. The Committee requested that Council representatives meet with Nga Rūnanga to discuss this further.

Committee Resolved THCP/2017/00030

Part C

That Te Hononga Council – Papatipu Rūnanga Committee:

1. Receives the progress report on the work programme.
2. Requests Council staff to continue to progress the priority areas identified in the work programme.
3. Requests Council staff to organise a meeting with Deputy Mayor Andrew Turner, the Chairperson of the Infrastructure Transport and Environment Committee, and Nga Rūnanga to discuss options for joint resolution of the Akaroa Wastewater project.

Chairperson Tau/Chairperson Dalziel

Carried

8. Other Business

Part B

Liz Brown left the meeting at 5:11 pm.

Helen Leahy, Chief Executive of Te Pūtahitanga o Te Waipounamu, supported by Jo McLean, addressed the committee regarding the evaluation of Whanau Ora.

Committee Resolved THCP/2017/00033

That Te Hononga Council – Papatipu Rūnanga Committee requests staff to report back to the Committee with ways to support Christchurch becoming the wellbeing Capital of New Zealand.

Chairperson Tau/Member Simon

Carried

Gabrielle Huria addressed the Committee regarding the Housing First collaboration to solve homelessness.

Gabrielle Huria addressed the Committee regarding the Ngai Tahu tribal economy conference in November.

Rangimarie Parata Tukurua addressed the Committee regarding Te Pa o Rakaihautu and their proposal to relocate to a larger site in the Avonside area, such as the site formerly occupied by Avonside Girls High School.

Committee Resolved THCP/2017/00034

That Te Hononga Council – Papatipu Rūnanga Committee receives the presentation on Te Pa o Rakaihautu, endorses the proposal in principle and their ambition for the location, and requests a report to the November Committee meeting after Te Runanga o Ngai Tahu has had the opportunity to consider the proposal.

Chairperson Dalziel/Chairperson Tau

Carried

Meeting concluded at 5:58pm.

CONFIRMED THIS 21ST DAY OF MARCH 2018

7. Update on Work Programme to Address Runanga Priorities

Reference: 18/219286

Presenter(s): Gabrielle Huria, Principal Advisor Ngai Tahu Relationship

1. Purpose and Origin of Report

Purpose of Report

- 1.1 The purpose of this report is for Te Hononga Council- Papatipu Rūnanga Committee to be updated about relevant work programmes that support the Committee's priorities, and the in-house activities led by the Ngai Tahu Relationship Advisors.

2. Staff Recommendations

That Te Hononga Council – Papatipu Rūnanga Committee:

1. [Receives the progress report on the work programme.](#)
2. [Requests Council staff to continue to progress the priority areas identified in the work programmes.](#)

3. Key Points

- 3.1 The Council's application for the Comprehensive Stormwater Network Consent (CSNDC) has been put on hold till June 2018. This is to enable the completion of the city-wide contaminant load modelling.
- 3.2 On 25 January 2018 the Council voted in favour of fast-tracking the below-ground wellhead improvement programme and implementing temporary chlorination as an additional risk management process while the wellhead improvement work is underway. Temporary chlorination will cease as soon as possible, when agreed by the Drinking Water Assessor and the Canterbury Medical Officer of Health, and work will be undertaken to work towards re-establishing the 'secure groundwater' status for the urban Christchurch water supply zones.
- 3.3 The Ngai Tahu and Maori Relationship Advisors are continuing to provide advice and a range of activities in support of the Mayor, Councillors, Community Boards and staff increasing their understanding of tikanga Maori, te reo and waiata, along with following good processes for engaging with Runanga on relevant matters.

4. Work to date

Improving Water Quality

4.1 Governors' Water Forum

- 4.1.1 The purpose of this bi-annual forum is for governors from Environment Canterbury (ECan), Christchurch City Council and Rūnanga Chairs to develop a common understanding of the issues facing the water resources of Christchurch and Banks Peninsula. The February 2018 meeting focussed on:

- Comprehensive Stormwater Network Discharge Consent Application
- Waimakariri Groundwater Science Update.

- 4.1.2 All Rūnanga Chairs are invited to the Water Forums and on this occasion, representatives from Wairewa and Tūāhuriri attended and were welcomed by the Mayor of Christchurch and other attendees.

4.2 **The Comprehensive Stormwater Network Consent (CSNDC)**

- 4.2.1 The Council's application for the Comprehensive Stormwater Network Consent (CSNDC) has been put on hold till June 2018. This is to enable the completion of the city-wide contaminant load modelling.

Background and timeline.

- 4.2.2 The Council holds a resource consent for the discharge of stormwater from the Council's network to land and water, which expired in September 2016. ECan and the Council engaged in extensive pre-application discussions through 2014, where the concept of a comprehensive consent for all catchments and an adaptive management based approach was developed. Staff and governors from both organisations committed to working towards the shared goal of improved urban water quality and ecology. A new resource consent application was lodged with ECan by the Council in June 2015. The application took a 'receiving environment' approach i.e this is a focus on the ecosystem that that connects with the discharge.
- 4.2.3 The consent application was publicly notified, at the request of the Council. Around 65 submissions were received in early 2016 from members of the public and stakeholders, including Ngāi Tahu. In preparing a report for the consent hearing, ECan officers formed the preliminary view that they would recommend the application be declined. This was due to the ongoing effects of the proposal and direction set by national and regional policy documents.
- 4.2.4 The key issues concerning the application were the limited anticipated improvement to in-stream water quality and a lack of certainty or firm targets for stormwater discharge quality over time. Demonstrating satisfactory progress towards meeting the in-stream water quality targets for the receiving waters, and attributing any non-compliance to the network discharge, is complicated by the multiple inputs of contaminants and the highly variable nature of the contaminant load over time.
- 4.2.5 Cooperative working group arrangements were established to develop an approach to enable the Council and ECan to address the issues raised and work towards a constructive hearing process. Consent timeframes were extended to 13 February 2018 with the agreement of ECan to allow the collaborative approach to progress. The Council requested a further timeframe extension to June 2018 to complete modelling work.

Joint working groups. Staff and senior management steering groups were established to work through specific issues and report back. The steering group agreed to develop:

- a contaminant load model (the model) to indicate expected trajectory of stormwater quality improvement
 - proposed conditions setting improvement targets over time, using contaminant load modelling results
 - a framework of consent conditions to report and respond to deviation from expected targets.
- 4.2.6 A pilot contaminant load modelling investigation has been completed for the Avon River/ Ōtākaro catchment with sediment, copper and zinc loads calculated for the present time and out to 35 years, including the effect of urban intensification and installation of stormwater treatment facilities.

Current status and next steps. The Avon River/ Ōtākaro pilot study results were completed and presented to the steering group in late 2017. Senior ECan and Council staff met in December 2017 to discuss the outputs of the modelling approach and identify next steps. The results show that the model approach is useful for estimating the impact of future contaminant loads and for targeting mitigation measures. The stormwater treatment facilities outlined in the stormwater management plan will result in limited reduction in contaminant loads over 35 years.

- The timing and location of the expected treatment facilities modelled is uncertain and is dependent on funding decisions in the Long Term Plan and other factors including private developments proceeding. This uncertainty, and modest contaminant reduction, makes setting interim targets acceptable to ECan and the Council difficult.
- The current model does not factor in the effects of other non-infrastructure initiatives – such as local behaviour change and central government regulation to control contamination sources such as to limit zinc roofs and copper in brake pads to reduce contaminants at source. The link between discharged contaminant loads and in-stream effects are not established.
- Next steps: Ecan responds to a timeframe extension request (to June 2018) to allow the Council to continue to develop the model for remaining catchments, and confirm provisions for stormwater management in the Long Term Plan.

4.3 Well head review, upgrade and maintenance programme

Background. Since the Canterbury earthquakes the city's water supply has had a 'provisionally secure' status and complied with the Drinking Water Standards without the need for treatment.

4.3.1 Bore security is demonstrated by meeting three criteria:

- The aquifer must not be directly affected by surface or climatic influences
- Bore head must provide satisfactory protection
- E coli must be absent from bore water.

4.3.2 Council has a rolling five-year programme to assess the security of all water supply wells and previous assessments have found all wells to be secure. Council reports (to the Drinking Water Assessor) on its Water Safety Plan and compliance with the three criteria for bore security in July each year. Any non-compliance is reported immediately.

4.3.3 On 22 August 2017, the annual compliance report was received from the Drinking Water Assessor confirming that the Christchurch water supply was compliant with the Drinking Water Standards and commended the Council on having full bacterial compliance for all distribution zones.

Response to Havelock North Drinking Water Inquiry Stage 1. The Stage 1 report was released on 10 May 2017 and described the likely causes of the contamination event as well as other failings that could have caused the contamination. These failings included the poor condition of the below ground well heads, the potential for flood waters to have entered the well head, and the potential for contamination via poorly sealed cables that penetrated the well heads.

4.3.4 In light of the Stage 1 Inquiry report staff proactively took steps to implement measures to improve the safety of Christchurch's water supply, including improving the security of well heads. In early June 2017 Citycare were instructed to assess, review and recommend repairs to all of the Council's below ground well heads. At a meeting with Citycare staff on 26 June 2017, it was agreed that they should undertake this work with urgency. The Drinking Water Assessor was notified of the work and made a site visit on 3 October 2017.

- 4.3.5 On 21 August 2017 Citycare Water issued its report, *Christchurch City Council Below Ground Water Well Head Repair Recommendations*, which summarised the typical defects that had been found through the investigations, and recommended a repair strategy with an estimated cost of \$840,000.
- 4.3.6 Council staff instructed Citycare to repair and improve all below ground well heads in August 2017. This work is due to be completed by December 2018 and is unlikely to be completed any earlier than October 2018 because of the need for specialist sub-contractors to carry out water-proofing work. The repairs to below ground well heads have been prioritised so that those at highest risk of contamination are repaired first.

Response to Havelock North Drinking Water Inquiry Stage 2. The Stage 2 report was released on 6 December 2017. It was critical of the Ministry of Health particularly in the area of enforcement of the Drinking Water Standards. There has not, as yet, been any Government response to the Stage 2 report.

- 4.3.7 A relevant recommendation from the Inquiry's Stage 2 report was that "[321] The Ministry, via the [Drinking Water Assessors] and Medical Officers of Health, should take urgent steps to administer and enforce the existing regulatory regime, having regard to the findings and recommendations in this Stage 2 Report."
- 4.3.8 On 20 December 2017, the Director-General of Health issued a statement under section 69ZZZC of the Health Act 1956 to bring the responsibilities under the Act to the attention of drinking water suppliers. While this was not a directive to drinking water suppliers, the advice was considered with urgency.
- 4.3.9 The latest round of independent well head security assessments was conducted in November 2017. A total of 25 wells at nine pump stations were assessed and none of the below ground well heads inspected met the security criteria. Draft reports on each of the pump stations, which described the issues with each of the wells, were provided to Council technical staff on 14 December 2017. The reports also recommended immediate actions to comply with the security criteria, as well as actions that should be undertaken within 12 months and in the longer term.
- 4.3.10 The findings of these assessments were discussed at meetings attended by the Drinking Water Assessor, the Canterbury Medical Officer of Health, the authors of the well head assessment reports and Council technical staff on 14 and 19 December 2017.
- 4.3.11 After receiving the Director-General of Health's Statement on 20 December 2017, senior Council staff met with the Drinking Water Assessor and the Canterbury Medical Officer of Health on 22 December to discuss its implications. At this meeting the Drinking Water Assessor indicated that, in light of the draft compliance reports on well head assessments, the security status for the Christchurch and Brooklands/Kainga water supplies would change from 'provisionally secure' to 'insecure'. A letter confirming the change was received later that afternoon.
- 4.3.12 Staff assessed the Council's position in response to the Director General's statement and the loss of the 'secure groundwater' status and recommended accelerating the well head repair and improvement programme (which was started in August 2017) and also temporarily chlorinating the water supply to reduce the risks to the supply.
- 4.3.13 The approach is being reviewed in light of the recent statutory well head security assessments which recommend improvements in addition to those already being undertaken by Citycare. The need for these improvements will be discussed and agreed with the Drinking Water Assessor, and the improvements and repairs being undertaken by Citycare will be amended accordingly.

4.3.14 It is important to note that the quality of Christchurch's groundwater has not changed. However, since the Havelock North incident, there is clearly a different appreciation of the risks (both likelihood and consequences) of contaminated water supplies. This is manifest in the regulators bringing a sharper focus to compliance with the Drinking Water Standards and consultants being much more diligent before signing off secure bores.

Future steps including temporary chlorination. On 25 January 2018 Council voted in favour of fast-tracking the below-ground wellhead improvement programme and implementing temporary chlorination as an additional risk management process while the wellhead improvement work is underway.

4.3.15 Temporary chlorination will cease as soon as possible, when agreed by the Drinking Water Assessor and the Canterbury Medical Officer of Health, and work will be undertaken to work towards re-establishing the 'secure groundwater' status for the urban Christchurch water supply zones.

4.3.16 As of 29 January 2018 Council staff are working on procuring the necessary equipment to facilitate temporary chlorination at up to 55 sites. The implementation date has been confirmed as 26 March 2018 and there is a comprehensive communications plan in train to the community in advance of the roll-out. Council staff will maintain close working relationships with the Drinking Water Assessor and Medical Officer of Health.

4.4 Update on Other Activities

4.4.1 Since the last report (21 September 2017, as the November meeting was cancelled) there has been a surge of interest from Council staff engaging with te reo Māori and tikanga.

4.4.2 **Te Reo Māori with Councillors.** Te reo Māori sessions with Councillors is growing. Weekly sessions have been extended to an hour per week. Lessons will be interspersed with sessions to increase understanding about Ngāi Tahu history, Te Rūnanga o Ngāi Tahu structure and activities, Te Kerēme and Te Tiriti o Waitangi. The first of these, about Te Tiriti o Waitangi was delivered prior to Waitangi Day.

4.4.3 **Te Reo Māori with staff.** There are now 10 teams within Te Hononga who have expressed interest for this, including City Planning, Civil Defence, Travel Demand Management and two Art Gallery teams. In addition to this the second 'general' class for staff starts soon. In total there has been over 150 expressions of interest for this course since advertising it in February.

4.4.4 **Waiata group.** Waiata sessions with interested staff have started back for the year. Staff are working towards two milestones, the opening of Tūranga and the inter-council 'staff haka-off'. This event was held at Environment Canterbury offices last year and included staff from Canterbury District Health Board, central government agencies and Environment Canterbury.

4.4.5 **Tikanga.** A Tikanga 101 course has also been developed to help staff understand basic tikanga and Māori worldview whilst being on a marae. This course has provided staff with an understanding on how to better inform Māori communities. Members of the Three Waters unit were the first to participate on this course. Participants have had positive engagement with Mahaanui Kurataiao on a number of projects, but wish to understand a more 'global' Māori worldview, including understanding protocols and procedures.

4.4.6 **Ngāi Tahu 101 & Treaty of Waitangi.** The Treaty of Waitangi course has been running successfully in Council for a number of years. The Ngāi Tahu 101 course aims to link into the Ngāi Tahu Education Committee course run at Tuahiwi Marae.

4.4.7 **In-house Requests.** Weekly clinics continue where Council staff are encouraged to meet informally with the Ngai Tahu Relationship Advisors to discuss current or forthcoming work projects where there will be a need to engage with Runanga and/or Maahanui Kurataio.

4.4.8 **Tuia programme.** The Mayor welcomed Materia Bullmore as this year's Tuia mentee. Materia is from Rapaki and Tūāhuriri. Materia is interested in adding youth voice to Council decision making.

4.5 Presentations

- Akaroa Wastewater Update
- Overview of the Long Term Plan's key proposals and Consultation process.

Attachments

There are no attachments to this report.

Confirmation of Statutory Compliance

Compliance with Statutory Decision-making Requirements (ss 76 - 81 Local Government Act 2002).

(a) This report contains:

- (i) sufficient information about all reasonably practicable options identified and assessed in terms of their advantages and disadvantages; and
- (ii) adequate consideration of the views and preferences of affected and interested persons bearing in mind any proposed or previous community engagement.

(b) The information reflects the level of significance of the matters covered by the report, as determined in accordance with the Council's significance and engagement policy.

Signatories

Author	Gabrielle Huria - Principal Advisor Ngai Tahu Relationship
Approved By	Adair Bruorton - Chief Advisor David Adamson - General Manager City Services

8. Overview of the Draft 2018-2028 Long Term Plan and Consultation Process

Reference: 18/225541

Presenter(s): Gabrielle Huria, Principal Advisor Ngai Tahu Relationship

1. Purpose of Report

- 1.1 The purpose of this report and accompanying presentation is to provide Te Hononga Council – Papatipu Rūnanga Committee - in particular Rūnanga representatives - with a brief overview of the Draft 2018-2028 Long Term Plan's proposals, note proposals that reflect the Committee's work programme priorities that may be of particular interest, and outline the opportunities to participate in the consultation process.

2. Staff Recommendations

That Te Hononga Council – Papatipu Rūnanga Committee:

1. [Receive the information in the report and accompanying presentation.](#)

3. Key Points

- 3.1 Under the Local Government Act 2002, all councils are required to develop a Long Term Plan every three years. The Plan has a ten-year timeframe, and outlines the Council's activities, services, capital programme and finances. It sets the direction for the activities and services the Council provides, and what level of service the community can expect. It also explains how the Council will pay for the activities and services – by setting its rates and managing its finances.
- 3.2 The Council's Draft 2018-2028 Long Term Plan was adopted by the Council on 21 February 2018.
- 3.3 This Long Term Plan is based on the theme 'We're in this together' – emphasising the need for collaboration between the Council, Papatipu Rūnanga, and the community, as well as with central government. It emphasises the need for prioritising our expenditure across our activities and services, due to the financial constraints we continue to face as a city, post-earthquake.
- 3.4 In light of the Committee's identified work programme priorities, proposals in the Draft Long Term Plan of interest to the Papatipu Rūnanga may include the following:
 - Prioritising work to maintain and renew water supply infrastructure and stormwater infrastructure.
 - Deferring work to renew wastewater infrastructure to free up funding to improve roads.
 - Prioritising work to reduce the flood risk in those parts of the city that have become more vulnerable to flooding since the earthquakes.
 - Prioritising work to maintain our parks and riverbanks.
 - Funding new facilities (e.g. a new pool in Linwood/Woolston) and a new library, service centre and leisure centre in Hornby.

There are other proposals and consultation questions in the document that may also be of interest to the Papatipu Rūnanga.

- 3.5 Consultation on the Draft 2018-2028 Long Term Plan commenced on 9 March 2018, and will close at 5:00pm on 13 April 2018.

- 3.6 As a Committee of Council, the Te Hononga Council - Papatipu Rūnanga Committee cannot submit on the Council's Draft Long Term Plan as a collective. However, the six Rūnanga may choose to each make a submission. Individuals, businesses, community groups and NGOs are also invited to make submissions, and to present their submissions at a Council hearing if they choose to.
- 3.7 Other Councils such as Environment Canterbury, Waimakariri District Council, and Selwyn District Council will also be consulting on their own draft Long Term Plans over the coming weeks/months. Details of each of the consultation periods, and copies of their consultation documents will be available on the councils' respective websites.

Attachments

There are no attachments to this report.

Signatories

Authors	Jasmine Mouat - Senior Advisor to Chief Executive Gabrielle Huria - Principal Advisor Ngai Tahu Relationship
Approved By	Adair Bruorton - Chief Advisor Carol Bellette - General Manager Finance and Commercial (CFO)

9. Other Business

There was no other business considered at the meeting.