

## **Spreydon-Cashmere Community Board AGENDA**

---

### **Notice of Meeting:**

An ordinary meeting of the Spreydon-Cashmere Community Board will be held on:

**Date:** Tuesday 30 January 2018  
**Time:** 5.00pm  
**Venue:** Boardroom, Beckenham Service Centre,  
66 Colombo Street, Beckenham

---

### **Membership**

Chairperson	Karolin Potter
Deputy Chairperson	Melanie Coker
Members	Helene Mautner
	Phil Clearwater
	Lee Sampson
	Tim Scandrett

---

**22 January 2018**

Arohanui Grace  
Manager Community Governance, Spreydon-Cashmere  
941 6663  
arohanui.grace@ccc.govt.nz  
[www.ccc.govt.nz](http://www.ccc.govt.nz)

Note: The reports contained within this agenda are for consideration and should not be construed as Council policy unless and until adopted.  
If you require further information relating to any reports, please contact the person named on the report.

**To view copies of Agendas and Minutes, visit:**

<https://www.ccc.govt.nz/the-council/meetings-agendas-and-minutes/>



Part A	Matters Requiring a Council Decision
Part B	Reports for Information
Part C	Decisions Under Delegation

---

## TABLE OF CONTENTS

C	1.	Apologies.....	4
B	2.	Declarations of Interest.....	4
C	3.	Confirmation of Previous Minutes .....	4
B	4.	Public Forum .....	4
B	5.	Deputations by Appointment.....	4
B	6.	Presentation of Petitions .....	4

## STAFF REPORTS

C	7.	Tree Removal for the Colombo & Beckenham Streets Wastewater Project .....	19
C	8.	Youth Achievement and Development Scheme 2017/18 - Millicent St Clare Smith .....	33
C	9.	Youth Achievement and Development Scheme 2017/18 - Te Marino Violet Rose Roberts.....	35
C	10.	Spreydon-Cashmere Community Board Area Report .....	37
B	11.	Elected Members' Information Exchange .....	45

## 1. Apologies

At the close of the agenda no apologies had been received.

## 2. Declarations of Interest

Members are reminded of the need to be vigilant and to stand aside from decision making when a conflict arises between their role as an elected representative and any private or other external interest they might have.

## 3. Confirmation of Previous Minutes

That the minutes of the Spreydon-Cashmere Community Board meeting held on [Friday, 8 December 2017](#) be confirmed (refer page 5).

## 4. Public Forum

A period of up to 30 minutes may be available for people to speak for up to five minutes on any issue that is not the subject of a separate hearings process.

It is intended that the public forum session will be held at <Approximate Time>

OR

There will be no public forum at this meeting

## 5. Deputations by Appointment

Deputations may be heard on a matter or matters covered by a report on this agenda and approved by the Chairperson.

There were no deputations by appointment at the time the agenda was prepared.

## 6. Presentation of Petitions

There were no petitions received at the time the agenda was prepared.

---

## Spreydon-Cashmere Community Board OPEN MINUTES

---

**Date:** Friday 8 December 2017  
**Time:** 8am  
**Venue:** Boardroom, Beckenham Service Centre,  
66 Colombo Street, Beckenham

---

**Present**

Chairperson	Karolin Potter
Deputy Chairperson	Melanie Coker
Members	Helene Mautner
	Phil Clearwater
	Lee Sampson
	Tim Scandrett

---

8 December 2017

Arohanui Grace  
Manager Community Governance, Spreydon-Cashmere  
941 6663  
arohanui.grace@ccc.govt.nz  
[www.ccc.govt.nz](http://www.ccc.govt.nz)

- Part A**      **Matters Requiring a Council Decision**  
**Part B**      **Reports for Information**  
**Part C**      **Decisions Under Delegation**
- 

The agenda was dealt with in the following order.

## 1. Apologies

Part C

**Community Board Resolved SCCB/2017/00178**

An apology was received and accepted from Phil Clearwater for lateness.

Lee Sampson/Melanie Coker

Carried

## 2. Declarations of Interest

Part B

Helene Mautner declared an interest in Item 13, Ōpāwaho/Heathcote River Bank Stabilisation - Stage 1 Landscape Plan and Tree Removals as a member of the Ōpāwaho/Heathcote River Network.

## 3. Confirmation of Previous Minutes

Part C

**Community Board Resolved SCCB/2017/00179**

That the minutes of the Spreydon-Cashmere Community Board meeting held on Friday, 24 November 2017 be confirmed.

Melanie Coker/Tim Scandrett

Carried

## 4. Public Forum

Part B

### 4.1 Cashmere Technical Football Club and Mainland Football

Part B

Mr Bill Cowen and Ms Caroline Mason, of Cashmere Technical Football Club and Mr Martin Field-Dodson of Mainland Football addressed the Board on the availability and condition of football playing fields in Christchurch South. The Chairperson thanked Ms Mason and Messrs Cowen and Field-Dodson for their presentation

The Board requested staff advice on the greenspace in the Spreydon-Cashmere area currently available for use by the Cashmere Technical Football Club and the potential for further greenspace to be made available for club use, including space that could be used on a year round basis.

#### **4.2 Christchurch South Toy Library**

##### **Part B**

Ms Beccy Warwick and Ms Barbara Williman spoke to the Board regarding Christchurch South Toy Library addressed the Board on needing a new facility from which to operate, as Spreydon School is closing in April 2018. The Chairperson thanked Ms Warwick and Ms Williman for their presentation

The Board requested staff advice on the availability of a facility in the Christchurch South area for use by the Christchurch South Toy Library, including the current or future availability of space in Coronation Hall.

Phil Clearwater arrived at 8:44 am.

#### **4.3 Christchurch Squash**

##### **Part B**

Mr Michael Beresford, from Christchurch Squash, updated the Board on the progress of building the Squash Building, near the Cashmere Club

The Chairperson thanked Mr Beresford for his presentation.

The Board noted its support for the establishment of the new squash facility in the Board's area, and requested staff advice on options available for further support of the project.

### **5. Deputations by Appointment**

##### **Part B**

There were no deputations by appointment.

### **6. Presentation of Petitions**

##### **Part B**

There was no presentation of petitions.

### **8. Joint Meeting - Linwood-Central-Heathcote and Spreydon-Cashmere Community Board Minutes - 24 November 2017**

**Community Board Resolved SCCB/2017/00183 (Original staff recommendation accepted without change)**

##### **Part B**

That the Spreydon-Cashmere Community Board:

1. Receives the Minutes from the Joint Meeting of the Linwood-Central-Heathcote and Spreydon-Cashmere Community Boards held 24 November 2017.

Helene Mautner/Lee Sampson

**Carried**

## **7. Staff Briefings**

### **Community Board Decisions under Delegation**

#### **Part B**

Janine Sowerby spoke to the Board regarding the "Shape Your Place" online toolkit. The toolkit has been designed for community groups to use to shape community space.

The meeting adjourned at 9.34 pm and re-convened at 9.38pm

## **9. Rapaki Road and Vernon Terrace - Proposed Parking Restrictions**

**Community Board Resolved SCCB/2017/00184 (Original staff recommendations accepted without change)**

#### **Part C**

That the Spreydon-Cashmere Community Board:

##### Rapaki Road, Even Properties 2-68 - No Stopping Restrictions

1. Revokes all existing parking restrictions on the western side of Rapaki Road, commencing at its intersection with Centaurus Road and extending in a southerly direction for 548 metres.
2. Approves that the stopping of vehicles be prohibited at any time on the western side of Rapaki Road commencing at its intersection with Centaurus Road and extending in a southerly direction for 111 metres.
3. Approves that the stopping of vehicles be prohibited at any time on the western side of Rapaki Road, commencing at a point 232 metres south of its intersection with Centaurus Road and extending in a southerly direction for 30 metres.
4. Approves that the stopping of vehicles be prohibited at any time on the western side of Rapaki Road, commencing at a point 268 metres south of its intersection with Centaurus Road and extending in a southerly direction for 14 metres.
5. Approves that the stopping of vehicles be prohibited at any time on the western side of Rapaki Road, commencing at a point 322 metres south of its intersection with Centaurus Road and extending in a southerly direction for 46 metres.
6. Approves that the stopping of vehicles be prohibited at any time on the western side of Rapaki Road, commencing at a point 408 metres south of its intersection with Centaurus Road and extending in a southerly direction for 16 metres.
7. Approves that the stopping of vehicles be prohibited at any time on the western side of Rapaki Road, commencing at a point 480 metres south of its intersection with Centaurus Road and extending in a southerly direction for 17 metres.
8. Approves that the stopping of vehicles be prohibited at any time on the western side of Rapaki Road, commencing at a point 536 metres south of its intersection with Centaurus Road and extending in a southerly direction for 12 metres.



Vernon Terrace - No Stopping Restrictions

9. Revokes all existing parking restrictions on the western side of Vernon Terrace, commencing at its intersection with Centaurus Road and extending in a southerly direction for 624 metres.
10. Revokes all existing parking restrictions on the eastern side of Vernon Terrace, commencing at its intersection with Centaurus Road and extending in a southerly direction for 624 metres.
11. Approves that the stopping of vehicles be prohibited at any time on the western side of Vernon Terrace commencing at its intersection with Centaurus Road and extending in a southerly direction for 52 metres.
12. Approves that the stopping of vehicles be prohibited at any time on the western side of Vernon Terrace, commencing at a point 108 metres south of its intersection with Centaurus Road and extending in a southerly direction for 104 metres.
13. Approves that the stopping of vehicles be prohibited at any time on the western side of Vernon Terrace, commencing at a point 259 metres south of its intersection with Centaurus Road and extending in a southerly direction for 47 metres.
14. Approves that the stopping of vehicles be prohibited at any time on the western side of Vernon Terrace, commencing at a point 610 metres south of its intersection with Centaurus Road and extending in a southerly direction for 14 metres.
15. Approves that the stopping of vehicles be prohibited at any time on the eastern side of Vernon Terrace commencing at its intersection with Centaurus Road and extending in a southerly direction for 33 metres.
16. Approves that the stopping of vehicles be prohibited at any time on the eastern side of Vernon Terrace, commencing at a point 49 metres south of its intersection with Centaurus Road and extending in a southerly direction for 83 metres.
17. Approves that the stopping of vehicles be prohibited at any time on the eastern side of Vernon Terrace, commencing at a point 153 metres south of its intersection with Centaurus Road and extending in a southerly direction for 26 metres.
18. Approves that the stopping of vehicles be prohibited at any time on the eastern side of Vernon Terrace, commencing at a point 218 metres south of its intersection with Centaurus Road and extending in a southerly direction for 82 metres.
19. Approves that the stopping of vehicles be prohibited at any time on the eastern side of Vernon Terrace, commencing at a point 610 metres south of its intersection with Centaurus Road and extending in a southerly direction for 14 metres.

Melanie Coker/Helene Mautner

Carried

## 10. Proposed No Stopping Restrictions - Wrights Road

**Community Board Resolved SCCB/2017/00185 (Original staff recommendation accepted without change)**

### Part C

That the Spreydon-Cashmere Community Board:

1. Approves that the stopping of vehicles be prohibited at any time on the south west side of Wrights Road commencing at a point 97 metres north west of its intersection with Lincoln Road, and extending in a north westerly direction for 37 metres.

Melanie Coker/Phil Clearwater

Carried

## 11. Proposed No Stopping Restrictions – Hendersons Road/Rowley Avenue

Community Board Resolved SCCB/2017/00186 (Original staff recommendations accepted without change)

### Part C

That the Spreydon-Cashmere Community Board:

1. Revokes all existing parking restrictions on the northern side of Rowley Avenue commencing at its intersection with Hendersons Road and extending in an easterly direction for 26 metres.
2. Revokes all existing parking restrictions on the southern side of Rowley Avenue commencing at its intersection with Hendersons Road and extending in an easterly direction for 20 metres.
3. Approves that the stopping of vehicles be prohibited at any time on the northern side of Rowley Avenue commencing at its intersection with Hendersons Road and extending in an easterly direction for 16 metres.
4. Approves that the stopping of vehicles be prohibited at any time on the southern side of Rowley Avenue commencing at its intersection with Hendersons Road and extending in an easterly direction for 16 metres.

Lee Sampson/Phil Clearwater

Carried

## 12. Thorrington School, Centaurus Road - School Patrol

Community Board Decided SCCB/2017/00187 (Original staff recommendation accepted without change)

### Part A

That the Spreydon-Cashmere Community Board recommends to Council that:

1. In pursuance of the powers vested in it by Section 8.3(1) of the Land Transport Rule-Traffic Control Devices 2004 (Rule 54002), and pursuant to the powers vested in it by the Local Government Act 1974 and 2002, the Christchurch City Council authorises the head teacher of Thorrington School to appoint appropriately trained persons to act as school patrols at the Centaurus Road crossing point as shown on **Attachment A**, located at a point more or less 27 metres southeast of its intersection with Holliss Avenue.

Tim Scandrett/Lee Sampson

Carried

## 14. Spreydon-Cashmere: Proposed Bus Passenger Shelter Installation

**Community Board Resolved SCCB/2017/00188 (Original staff recommendation accepted without change)**

### Part C

That the Spreydon-Cashmere Community Board approves the installation of a bus shelter at 75 Halswell Road.

Melanie Coker/Helene Mautner

Carried

## 13. Ōpāwaho/Heathcote River Bank Stabilisation - Stage 1 Landscape Plan and Tree Removals

### Staff Recommendations

That the Spreydon-Cashmere Community Board:

1. Approves the Stage 1 Landscape Plan for the Ōpāwaho/Heathcote River Bank Stabilisation project, including the replacement tree planting plan, comprising 122 new trees.
2. Approves the removal of 35 street and park trees to allow the Stage 1 of the project to be fully implemented.
3. Existing Ashgrove Terrace – Parking and Stopping Restrictions
  - a. Revokes parking restrictions on the south side of Ashgrove Terrace, commencing at a point 192 metres west of its intersection with Barrington Street, and extending in a westerly direction for 142 metres.
  - b. Revokes parking restrictions on the south side of Ashgrove Terrace, commencing at a point 96 metres west of its intersection with Colombo Street, and extending in a westerly direction for 56 metres.
  - c. Revokes parking restrictions on the north side of Ashgrove Terrace, commencing at a point 101 metres west of its intersection with Colombo Street, and extending in a westerly direction for 46 metres.
4. New Ashgrove Terrace – Parking and Stopping Restrictions
  - a. Approves that the stopping of vehicles be prohibited at any time on the south side of Ashgrove Terrace, commencing at a point 192 metres west of its intersection with Barrington Street, and extending in a westerly direction for 142 metres.
  - b. Approves that the stopping of vehicles be prohibited at any time on the south side of Ashgrove Terrace, commencing at a point 96 metres west of its intersection with Colombo Street, and extending in a westerly direction for 56 metres.
  - c. Approves that the stopping of vehicles be prohibited at any time on the north side of Ashgrove Terrace, commencing at a point 101 metres west of its intersection with Colombo Street, and extending in a westerly direction for 46 metres.

### Board Consideration

The Board discussed the balance of native and exotic trees to be planted as part of the landscape plan. The Board noted advice from staff present that the proposal is for the planting to be eighty percent native. With regard to the specimen trees to be planted members agreed that community members should be involved in the selection of the species of these.

**Community Board Resolved SCCB/2017/00189**

**Part C**

That the Spreydon-Cashmere Community Board:

1. Approves the Stage 1 Landscape Plan for the Ōpāwaho/Heathcote River Bank Stabilisation project, including the replacement tree planting plan, comprising approximately 122 new trees; such trees to comprise a mix of native and exotic species being predominantly native trees, locally sourced and ecologically appropriate for the site. The mix of species of specimen trees to be used to be identified following a community workshop.
2. Approves the removal of 35 street and park trees to allow the Stage 1 of the project to be fully implemented.
3. Existing Ashgrove Terrace – Parking and Stopping Restrictions
  - a. Revokes parking restrictions on the south side of Ashgrove Terrace, commencing at a point 192 metres west of its intersection with Barrington Street, and extending in a westerly direction for 142 metres.
  - b. Revokes parking restrictions on the south side of Ashgrove Terrace, commencing at a point 96 metres west of its intersection with Colombo Street, and extending in a westerly direction for 56 metres.
  - c. Revokes parking restrictions on the north side of Ashgrove Terrace, commencing at a point 101 metres west of its intersection with Colombo Street, and extending in a westerly direction for 46 metres.
4. New Ashgrove Terrace – Parking and Stopping Restrictions
  - a. Approves that the stopping of vehicles be prohibited at any time on the south side of Ashgrove Terrace, commencing at a point 192 metres west of its intersection with Barrington Street, and extending in a westerly direction for 142 metres.
  - b. Approves that the stopping of vehicles be prohibited at any time on the south side of Ashgrove Terrace, commencing at a point 96 metres west of its intersection with Colombo Street, and extending in a westerly direction for 56 metres.
  - c. Approves that the stopping of vehicles be prohibited at any time on the north side of Ashgrove Terrace, commencing at a point 101 metres west of its intersection with Colombo Street, and extending in a westerly direction for 46 metres.

Helene Mautner/Lee Sampson

Carried

**15. Spreydon-Cashmere Community Board 2017-18 Discretionary Response Fund  
- Application - Rowley Avenue School Breakfast Club**

**Community Board Resolved SCCB/2017/00190 (Original staff recommendation accepted without change)Part C**

That the Spreydon-Cashmere Community Board approves a grant of \$500 from its 2017-18 Discretionary Response Fund to Rowley Avenue School towards equipment and operating costs of the Rowley Avenue School Breakfast Club .

Karolin Potter/Melanie Coker

Carried

## **16. Spreydon-Cashmere Community Board Discretionary Response Fund 2017/18 - Application - Seventh Day Adventist Church (Addington Samoan)**

### **Staff Recommendation**

That the Spreydon-Cashmere Community Board approves a grant of \$2,000 to the Seventh Day Adventist Church (Addington Samoan) towards the Be Active Pasifika project.

### **Board Consideration**

The Board noted advice from staff present that the costs associated with this project had been advised and the amount of the grant now being sought is \$500. as other streams of funding have been identified.

### **Community Board Resolved SCCB/2017/00191**

#### **Part C**

That the Spreydon-Cashmere Community Board approves a grant of \$500 from its 2017-18 Discretionary Response Fund to the Seventh Day Adventist Church (Addington Samoan) towards the "Be Active Pasifika" project.

Tim Scandrett/Helene Mautner

Carried

## **17. Spreydon-Cashmere Community Board Youth Achievement and Development Scheme 2017/18 -Application - Asafo Sa Gali, Shane McPhail, James Hemera and Joshua Burgess**

### **Staff Recommendations**

That the Spreydon-Cashmere Community Board:

1. Approves a grant of \$250 from its 2017/18 Youth Achievement and Development Scheme to Asafo Sa Gali towards the Abel Tasman Leadership Tramping trip at the Abel Tasman National Park from the 13 – 17 December 2017.
2. Approves a grant of \$250 from its 2017/18 Youth Achievement and Development Scheme to Shane McPhail towards the Abel Tasman Leadership Tramping trip at the Abel Tasman National Park from the 13 – 17 December 2017.
3. Approves a grant of \$300 from its 2017/18 Youth Achievement and Development Scheme to James Hemera towards the Super City U16 Baseball tournament.
4. Approves a grant of \$250 from its 2017/18 Youth Achievement and Development Scheme to Joshua Burgess towards the Under 16 National Touch Rugby Tournament in Auckland from the 8 – 10 February 2018..

### **Board Consideration**

The Board noted advice from staff present that it is proposed that grants towards Asafo Sa Gali and Shane McPhail participating in the Abel Tasman Leadership Tramping trip at the Abel Tasman National Park are to be made to the Spreydon Youth Community Trust on behalf of the individuals.

### **Community Board Resolved SCCB/2017/00192**

#### **Part C**

That the Spreydon-Cashmere Community Board:

1. Approves a grant of \$250 from its 2017/18 Youth Achievement and Development Scheme to Spreydon Youth Community Trust towards the participation of Asafo Sa Gali in the Leadership Tramp at Abel Tasman National Park 13 – 17 December 2017.
2. Approves a grant of \$250 from its 2017/18 Youth Achievement and Development Scheme to Spreydon Youth Community Trust towards the participation of Shane McPhail in the Leadership Tramp at Abel Tasman National Park 13 – 17 December 2017i 2017.
3. Approves a grant of \$300 from its 2017/18 Youth Achievement and Development Scheme to James Hemera towards the participation in the Super City Under16 Baseball tournament in Australia 2-9 January 2018.
4. Approves a grant of \$250 from its 2017/18 Youth Achievement and Development Scheme to Joshua Burgess towards the participation in the Under 16 years National Touch Rugby Tournament in Auckland 8–10 February 2018.

Tim Scandrett/Lee Sampson

Carried

## **18. Spreydon-Cashmere Community Board Discretionary Response Fund 2017/18 - Application - Christchurch Boys High School**

**Community Board Resolved SCCB/2017/00193 (Original staff recommendation accepted without change)**

### **Part C**

That the Spreydon-Cashmere Community Board:

1. Approves a grant of \$1,500 to Christchurch Boys High School towards participation of Brigham Riwai-Couch, Cameron Henderson and Max Hughes in the World Schools Rugby Festival 2018 in South Africa, 2-7 April 2018 .

Melanie Coker/Helene Mautner

Carried

## **19. Spreydon - Cashmere Community Board - Recess Committee 2017/18**

**Community Board Resolved SCCB/2017/00194 (Original staff recommendation accepted without change)**

### **Part C**

That the Spreydon-Cashmere Community Board:

- 1 Appoints a Recess Committee comprising the Board Chairperson or Deputy Chairperson and any two Board members available, to be authorised to exercise the delegated powers of the Spreydon- Cashmere Community Board for the period following the Board's final scheduled meeting for the year on 8 December 2017 until its next ordinary meeting on 30 January 2018.
- 2 Requires that the exercise of any such delegation by the Recess Committee be reported back to the Board for record purposes.
- 3 Notes that any meeting of the Recess Committee will be publicised and details forwarded to all Board members.

Karolin Potter/Melanie Coker

Carried

## 20. Spreydon-Cashmere Community Board Area Report

**Community Board Resolved SCCB/2017/00195 (Original staff recommendations accepted without change)**

### Part B

That the Spreydon-Cashmere Community Board:

1. Receives the Area Update.
2. Requests staff to arrange a City Sounds event to be held in Victoria Park, or another venue within the Spreydon-Cashmere area if Victoria Park proves unsuitable, on a Sunday afternoon in early 2018.

Lee Sampson/Melanie Coker

Carried

## 21. Spreydon-Cashmere Community Board Meeting Schedule

### Staff Recommendations

That the Spreydon-Cashmere Community Board:

1. Adopts the following meeting schedule for January to December for 2018:

Tuesday 30 January	5.00pm	Beckenham Service Centre Boardroom
Friday 16 February	8.00am	Beckenham Service Centre Boardroom
Tuesday 6 March	5.00pm	Beckenham Service Centre Boardroom
Friday 16 March	5.00pm	Beckenham Service Centre Boardroom
Tuesday 3 April	5.00pm	Beckenham Service Centre Boardroom
Friday 20 April	8.00am	Beckenham Service Centre Boardroom
Tuesday 1 May	5.00pm	Beckenham Service Centre Boardroom
Friday 18 May	8.00am	Beckenham Service Centre Boardroom
Tuesday 5 June	5.00pm	Beckenham Service Centre Boardroom
Friday 15 June	8.00am	Beckenham Service Centre Boardroom
Tuesday 3 July	5.00pm	Beckenham Service Centre Boardroom
Friday 20 July	8.00am	Beckenham Service Centre Boardroom
Tuesday 7 August	5.00pm	Beckenham Service Centre Boardroom
Friday 17 August	8.00am	Beckenham Service Centre Boardroom
Tuesday 4 September	5.00pm	Beckenham Service Centre Boardroom
Friday 21 September	8.00am	Beckenham Service Centre Boardroom
Tuesday 2 October	5.00pm	Beckenham Service Centre Boardroom
Friday 19 October	8.00am	Beckenham Service Centre Boardroom
Tuesday 6 November	5.00pm	Beckenham Service Centre Boardroom



Friday 23 November	8.00am	Beckenham Service Centre Boardroom
Friday 7 December	8.00am	Beckenham Service Centre Boardroom

### **Board Discussion**

The Board discussed the proposed meeting dates, and decided that it would not meet on Tuesday 3 April, owing to the proximity to the Easter holiday. It was noted that the meeting on Tuesday 6 March is to commence at 5pm.

### **Community Board Resolved SCCB/2017/00196**

### **Part C**

That the Spreydon-Cashmere Community Board:

1. Adopts the following meeting schedule for January to December for 2018:

Tuesday 30 January	5.00pm	Beckenham Service Centre Boardroom
Friday 16 February	8.00am	Beckenham Service Centre Boardroom
Tuesday 6 March	5.00pm	Beckenham Service Centre Boardroom
Friday 16 March	8.00am	Beckenham Service Centre Boardroom
Friday 20 April	8.00am	Beckenham Service Centre Boardroom
Tuesday 1 May	5.00pm	Beckenham Service Centre Boardroom
Friday 18 May	8.00am	Beckenham Service Centre Boardroom
Tuesday 5 June	5.00pm	Beckenham Service Centre Boardroom
Friday 15 June	8.00am	Beckenham Service Centre Boardroom
Tuesday 3 July	5.00pm	Beckenham Service Centre Boardroom
Friday 20 July	8.00am	Beckenham Service Centre Boardroom
Tuesday 7 August	5.00pm	Beckenham Service Centre Boardroom
Friday 17 August	8.00am	Beckenham Service Centre Boardroom
Tuesday 4 September	5.00pm	Beckenham Service Centre Boardroom
Friday 21 September	8.00am	Beckenham Service Centre Boardroom
Tuesday 2 October	5.00pm	Beckenham Service Centre Boardroom
Friday 19 October	8.00am	Beckenham Service Centre Boardroom
Tuesday 6 November	5.00pm	Beckenham Service Centre Boardroom
Friday 23 November	8.00am	Beckenham Service Centre Boardroom
Friday 7 December	8.00am	Beckenham Service Centre Boardroom

Tim Scandrett/Phil Clearwater

**Carried**

22. Elected Members' Information Exchange

### **Part B**

Board Members exchanged the following information:

- There was discussion of the need for adequate provision in the Long Term Plan for land drainage recovery.
- Members noted that the Christchurch Adventure Park maps include the "Flying Nun."



- An evening of Christmas Carols will be held at Hoon Hay Community Centre on Friday 15 December.
- Local residents will be presenting to a meeting of the Canterbury Regional Council (Environment Canterbury) next week regarding the odour issues from the laundry at the Cashmere View Retirement Village.
- 

#### **22.1 Worsleys Road to Westmorland – Formation of New Road**

The Board noted that a new road was being formed to link Worsleys Road to Westmorland.

The Board requested staff advice on the new road that is being formed to link Worsleys Road to Westmorland.

#### **22.2 Redevelopment of Rowley School**

The Board discussed the need for Rowley Avenue School to be redeveloped.

That the Board endorses the Chairperson writing on behalf of the Board to Megan Woods, Member of Parliament for Wigram, and the Minister of Education supporting the re-development of Rowley School.

**Meeting concluded at 11.10am**

**CONFIRMED THIS 30TH DAY OF JANUARY 2018**

**KAROLIN POTTER**  
**CHAIRPERSON**



## 7. Tree Removal for the Colombo & Beckenham Streets Wastewater Project

Reference: 18/25175

Contact: Rohan Meissenheimer Rohan.meissenheimer@ccc.govt.nz 8611

### 1. Purpose and Origin of Report

#### Purpose of Report

1.1 The purpose of this report is to seek approval from the Spreydon-Cashmere Community Board Community Board for:

- The removal of 1 healthy and structurally sound street tree for the Colombo Street and Beckenham Street Wastewater Project (Heathcote River Syphon). The tree is a Broad-leaved Lime (*Tilia platyphyllos*).  
The subject tree will be retained if possible, but may require removal if there are no viable alternative options during construction.
- The proposed planting of 3 replacement trees.

The purpose of this report is to also inform the Spreydon-Cashmere Community Board regarding the removal of 2 other trees that are structurally unsound and causing potential damage to a riverbank retaining wall. These trees are Common Alder (*Alnus glutinosa*).

1.2 Decisions on the removal of healthy and structurally sound trees is delegated to the Community Board, under Part D, Sub-part 1, 5.15 of the Council's delegations register:

- "Determine to plant, maintain and remove trees on reserves, parks and roads under the control of the Council within the policy set by the Council."

1.3 Decisions on the removal of unhealthy and structurally unsound trees and trees causing infrastructure damage is delegated to the Head of Parks, under Part B, Sub-part 3, 20 Parks/Trees of the Council's delegations register:

- "In consultation with any other units affected, to authorise the following work on any tree from any reserve, park, open space or road corridor: planting and maintenance; removal of structurally unsound and unhealthy trees, trees causing damage to infrastructure or other safety concerns where there is no viable alternative other than to remove the tree. The relevant Community Board is to be informed of any removals that have been carried out under this delegation."

#### Origin of Report

1.4 This report is staff generated, and relates to the implementation of a high priority Heathcote Wastewater Pump Station 20 Catchment Overflows project.

### 2. Significance

2.1 The decisions in this report are of low significance in relation to the Christchurch City Council's Significance and Engagement Policy.

2.1.1 The level of significance of approving the removal of the trees was determined by a score of 12 (Low) based on the significance criteria used by the Council.

- 2.1.2 Not approving the removal of the tree would increase the level of significance to Medium (determined by a score of 24), due to the severe delays and costs this will have on the project.

### 3. Staff Recommendations

That the Spreydon-Cashmere Community Board approve:

1. The removal of 1 street tree to allow the wastewater project to be fully implemented.
2. The implementation of the proposed tree planting, comprising 3 replacement street trees.

### 4. Key Points

- 4.1 This report supports the [Council's Long Term Plan \(2015 - 2025\)](#):

4.1.1 Activity: Wastewater Collection

- Level of Service: 11.0.1 Provide wastewater collection in a safe, convenient and efficient manner (blockage complaints; odour complaints; sewerage system faults; complaints remediation)

- 4.2 The following feasible options have been considered:

- Option 1 - Approve the removal and replacement of the tree to allow the project to be implemented as intended (preferred option).
- Option 2 - Decline the removal of the tree, which will increase the risk, cost and cause severe delays to the implementation of the project.

- 4.3 Option Summary - Advantages and Disadvantages (Preferred Option)

4.3.1 The advantages of this option include:

- This option allows for the implementation of the project to improve the wastewater network, and is the most effective method of delivering the project outcomes.
- An increased level of service will be provided through increased wastewater capacity, a reduction in flooding and pollution during flood events, and the ability to effectively maintain the network.
- The proposed alignment will have the least impact on trees within the area. There are larger trees that are in more prominent locations that can be retained if the subject tree is removed.

4.3.2 The disadvantages of this option include:

- The removal of 1 tree that is in a good condition.

### 5. Context/Background

- 5.1 The purpose of this project is to alleviate wastewater overflows for the catchment during storm events.
- 5.2 The trees require removal as the works will involve the installation of a new wastewater trunk main down Colombo Street and a siphon system being installed to cross the Heathcote River.
- 5.3 Design investigations included installing the syphon on the eastern and western sides of the Colombo Street bridge, with the following outcomes:

- Contaminated land and established trees on the eastern side of the bridge result in significant increased risks to the implementation of the project.
- On the western side of the bridge the land is not contaminated and there will be less impact on existing trees.
- The best location for the syphon to be installed across the Heathcote River is opposite 1A Ernlea Tce and 69 Colombo Street (in Ashgrove Terrace).

### Tree Removals

- 5.4 A tree assessment has been carried out within the vicinity of the alignment to assess the condition of the trees, and inform the design to minimise potential adverse effects on trees that are healthy and structurally sound (refer **Attachment A**: tree report from Arbor Vitae Ltd, dated 8 January 2018).
- Based upon the project design there are up to 3 street trees identified as requiring removal for the works.
  - 1 of the trees is a healthy and structurally sound condition. This tree will be retained if possible, but may require removal if there are no viable alternative options during construction.
  - 2 other trees that are structurally unsound and causing potential damage to a riverbank retaining wall.
- 5.5 Alternative design options have been considered that would allow for the retention of these trees. No feasible alternative alignment has been identified that would allow for the retention of the trees without disturbing contaminated land or causing potential adverse effects on more significant trees.
- 5.6 The streets trees are protected under the Christchurch District Plan rules, and consent has been granted for the removal of the trees.

### Replacement Trees

- 5.7 Replacement tree planting is proposed to be carried out as part of the project, and this will include the following mix of native and exotic tree species.
- 5.8 It is proposed that two native Small-leaved Kowhai (*Sophora microphylla*) trees are planted within the existing street garden opposite 1A Ernlea Terrace, in the area where the Common Alders are to be removed.
- 5.9 It is proposed that one exotic Broad-leaved Lime (*Tilia platyphyllos*) is planted to replace the existing tree (if the tree is removed). The replacement tree will be planted within the near vicinity of the existing tree.
- 5.10 The proposed replacement planting is consistent with the Mid-Heathcote River/Ōpāwaho Linear Park Masterplan.

## 6. Option 1 – Tree Removal & Replacement (preferred)

### Option Description

- 6.1 This option will see the possible removal of 1 healthy and structurally sound Broad-leaved Lime street tree to allow the project to be implemented.

- 6.2 The planting of a replacement street tree will occur as mitigation if the Broad-leaved Lime tree is removed, plus 2 trees will be planted to replace the Common Alders which are in poor condition.

### **Significance**

- 6.3 The level of significance of this option is low, consistent with section 2 of this report.

### **Impact on Mana Whenua**

- 6.4 This option does not involve a significant decision in relation to land or a body of water or other elements of intrinsic cultural value therefore this decision does not specifically impact Māori, their culture and traditions.

### **Community Views and Preferences**

- 6.5 Local residents may be affected by this option due to the proximity of the trees to roads and the river, but the subject trees are relatively insignificant due to the surrounding larger trees.

### **Alignment with Council Plans and Policies**

- 6.6 This option is consistent with Council's Plans and Policies relating to the optimisation of the wastewater network.

### **Financial Implications**

- 6.7 Cost of Implementation – the estimated cost of removing the 1 tree that is healthy and structurally sound and planting and establishing 3 replacement trees is \$1,610.
- 6.8 Maintenance / Ongoing Costs – once established the new trees will continue to be maintained by the Parks Unit under the operational budget for tree maintenance.
- 6.9 Funding source – the removal and replacement of the trees will be funded by the project.

### **Legal Implications**

- 6.10 The proposed tree removals are consistent with conditions of the global consent that is held by Council.

### **Risks and Mitigations**

- 6.11 If approval for the tree removal is not granted then this would prevent the implementation of the works. This results in ongoing risks to the community should flood events occur.

### **Implementation**

- 6.12 Implementation dependencies – approval from the Community Board is required for the removal of 1 tree that may require removal for the works.
- 6.13 Implementation timeframe – The works and tree removals are planned to start during March 2018, and the replacement tree planting will occur during the winter planting season during or following the works (May to August 2018 or 2019).

### **Option Summary - Advantages and Disadvantages**

- 6.14 The advantages of this option include:
- This option allows for the implementation of the project, and is the most effective method of delivering the project outcomes.
  - Increased level of service provided through network improvements that result in increased wastewater capacity.
- 6.15 The disadvantages of this option include:
- The removal of 1 tree that is in good condition and the immediate loss of amenity where this occurs.

## 7. Option 2 – Decline the removal of the tree

### Option Description

7.1 Decline the removal of the tree.

- This would severely impact the project due the:
  - Extensive delays associated with the redesigning of the alignment to the eastern side (Cashmere Library side) of Colombo Street.
  - To reroute the alignment to the eastern side include works through contaminated land in as this alignment will be through historical landfill site.
  - Include the removal of more significant tree(s).
  - Additional resource consents for the removal of the more significant tree(s) will be required.
  - The resources consents may not be granted due to more appropriate options being available.
  - The required improvements to the wastewater network may not be approved under the district plan rules.

### Significance

7.2 The level of significance of this option is Medium (determined by a score of 24) which differs from section 2.1.1 of this report due the additional risks, cost and delays this will have on the project.

### Impact on Mana Whenua

7.3 This option may involve a significant decision in relation to land or a body of water or other elements of intrinsic cultural value therefore this decision could specifically impact Māori, their culture and traditions.

### Community Views and Preferences

7.4 There is an interest in the condition and management of the wastewater network in some sectors in the community. From these interactions it is understood that the community wants to be assured that the network is fit for purpose.

### Alignment with Council Plans and Policies

7.5 This option is inconsistent with Council's Plans and Policies.

7.5.1 Inconsistency – the required improvements to the wastewater network may not be approved under the district plan rules.

7.5.2 Reason for inconsistency – Additional resource consent(s) required may not be granted due to more appropriate options being available.

### Financial Implications

7.6 Cost of Implementation – this has not been quantified but would significantly increase the project design and construction costs.

7.7 Maintenance / Ongoing Costs – n/a, as this will be similar to option 1's

7.8 Funding source – There is currently no allocation of funding for the increased project design and construction costs.

### Legal Implications

7.9 N/A.

### Risks and Mitigations

7.10 The project may not be approved under the district plan rules.

### Implementation

7.11 Implementation dependencies - N/A

7.12 Implementation timeframe – this option will result in delays to the project.

### Option Summary - Advantages and Disadvantages

7.13 The advantages of this option include:

- The tree will be retained

7.14 The disadvantages of this option include:

- More significant tree(s) will need to be removed and the alignment will be through contaminated land for which additional resource consents are required that might not be approved as a more appropriate option is available.
- Increase in cost and delays to redesign the alignment.

### Attachments

No.	Title	Page
A <a href="#">↓</a>	Tree Report for the Colombo Street & Beckenham St. Wastewater Cross Connection Project	25

### Confirmation of Statutory Compliance

Compliance with Statutory Decision-making Requirements (ss 76 - 81 Local Government Act 2002).

(a) This report contains:

- sufficient information about all reasonably practicable options identified and assessed in terms of their advantages and disadvantages; and
- adequate consideration of the views and preferences of affected and interested persons bearing in mind any proposed or previous community engagement.

(b) The information reflects the level of significance of the matters covered by the report, as determined in accordance with the Council's significance and engagement policy.

### Signatories

Author	Rohan Meissenheimer - Junior Project Manager
Approved By	Keith Davison - Manager Land Drainage David Adamson - General Manager City Services



Arboricultural Report

8 January 2018

**Christchurch City Council  
Heathcote River Syphon  
Colombo Street Waste Water Project  
69 Colombo Street – 1A Ernlea Terrace, Beckenham**



LAURIE GORDON  
ARBOR VITAE LTD  
PO Box 36 488  
MERIVALE  
CHRISTCHURCH

## Contents

1.0	Executive Summary	1
2.0	Site & Tree Details	2
2.1	Trees to be Removed	3
3.0	Replacement Planting	4
4.0	Tree Protection Requirements	5
5.0	Recommendations	5

Appendix 1	Tree Assessment Method	
------------	------------------------	--

## COLOMBO STREET WASTE WATER PROJECT - HEATHCOTE RIVER SIPHON

### 1.0 Executive Summary

This report was commissioned by Rohan Meissenheimer, Project Manager, Christchurch City Council. The report provides information relating to trees within the vicinity of works required for the installation of a waste water siphon below the Heathcote River as part of the Colombo Street Waste Water Project.

The project will involve the installation of a new waste water pipe along Colombo Street, and a siphon system is required to cross the Heathcote River. The most viable option for the alignment of the siphon is on the western side of the Colombo Street bridge, between 1A Ernlea Terrace and 69 Colombo Street.

Alternative design options have been considered, and the alignment of the siphon has been positioned as much as possible to avoid trees on both sides of the river. Whilst the proposed alignment will have the least impact on trees, due to the design requirements and site constraints, the removal of some trees cannot be avoided. The construction methodologies will be partly determined by ground conditions, and may involve a combination of open cut trenching with sheet piling, and directional drilling if possible.

The works will require the removal of up to three trees.

- On the Ernlea Terrace side, there are two Common Alder (*Alnus glutinosa*) trees that require removal. These trees have poor structure, and are growing at the river edge and on a wooden retaining wall.
- On the Ashgrove Terrace side of the river there is one Broad-leaved Lime (*Tilia platyphyllos*). This tree will be retained if possible, but may require removal if the health and structural integrity of the tree are compromised by the potential loss of tree roots.

The condition of the trees to be removed were evaluated in November 2017 using the Christchurch City Council tree assessment system. At the time of the tree inspection the Common Alder trees were found to be in poor condition and the Broad-leaved Lime was in good condition.

The removal of the subject trees will not result in a significant loss of amenity within the streetscape, as there are numerous other trees located within the vicinity of the trees on both sides of the Heathcote River.

The project will include replacement tree planting, and a new tree will be planted to replace each tree that is removed.

- On the Ernlea Terrace side, it is proposed that two Small-leaved Kowhai (*Sophora microphylla*) trees are planted within the existing street garden area opposite 1A Ernlea Terrace.
- On the Ashgrove Terrace side, it is proposed that one Broad-leaved Lime (*Tilia platyphyllos*) is planted to replace the existing tree (if the tree is removed). The replacement tree will be planted within the near vicinity of the existing tree.

A resource consent is required for the removal of the trees (as outlined in the Christchurch District Plan, Chapter 9.4.4.1, P6), as they are classed as street trees that are more than 6.0 metres in height and are also located within a waterbody setback. The existing Global Consent (RMA92019127) will apply to the removal of the trees as the trees are within a former Category C Special Purpose Road Zone streets, and a separate resource consent will not be required for the removal of the trees.

The Christchurch District Plan rules relating to earthworks within 5.0 metres of the trees (Chapter 9.4.4.1, P12) will not apply to the project, as utility works are exempt from those rules. A resource consent will not be required, however it is recommended that all trees that are retained within the vicinity of the works receive adequate physical protection to prevent damage during the works. The CCC Construction Standard Specification (CSS), Part 1, Section 19.0: protection of natural assets and habitats outlines tree protection requirements and methodologies, and it is recommended that the tree protection requirements outlined the CSS are complied with for the duration of the works.

COLOMBO STREET WASTE WATER PROJECT - HEATHCOTE RIVER SIPHON

2.0 Site & Tree Details

The project will involve the installation of a new waste water pipe along Colombo Street. The works for the installation of the Heathcote River siphon will be within the vicinity of trees located opposite 1A Ernlea Terrace and within Ashgrove Terrace, opposite 69 Colombo Street (see Figure 1 below).

The alignment of the siphon has been positioned to avoid the trees on both sides of the river. The proposed alignment will allow for the protection and retention of the most significant trees within the immediate area, and the trees that require removal are the least significant trees. Transplanting the trees to be removed is not a viable option due to the size and location of the trees.

The Common Alders that are to be removed are two of five Common Alder trees that are growing at the edge of the river and on a wooden retaining wall. The retaining wall provides erosion control and bank stability, and the trees are likely to cause unavoidable damage to the retaining wall as they develop and mature. These trees also have poor structural integrity due to multiple stems and included (structurally weak) stem unions.

As part of the site investigations, a ground penetrating radar survey was carried out on the Ashgrove Terrace side of the river to determine the extent of tree roots within the alignment of the works. The Broad-leaved Lime is a smaller tree that is located between two significant trees (English Elm and Swamp Cypress). The proposed alignment is centred between the two larger trees, but will be close to the Broad-leaved Lime. Moving the alignment further away from the Broad-leaved Lime would result in works being carried out closer to the English Elm than proposed, and potential damage to the root system and the canopy of the tree.

The construction methodologies will be partly determined by ground conditions, and may involve a combination of open cut trenching with sheet piling, and directional drilling. If directional drilling is possible within the vicinity of the Broad-leaved Lime, then the tree will be retained. Also, the Broad-leaved Lime may be retained if the extent of roots removed within the excavated area is sustainable and does not compromise the health or structural integrity of the tree.

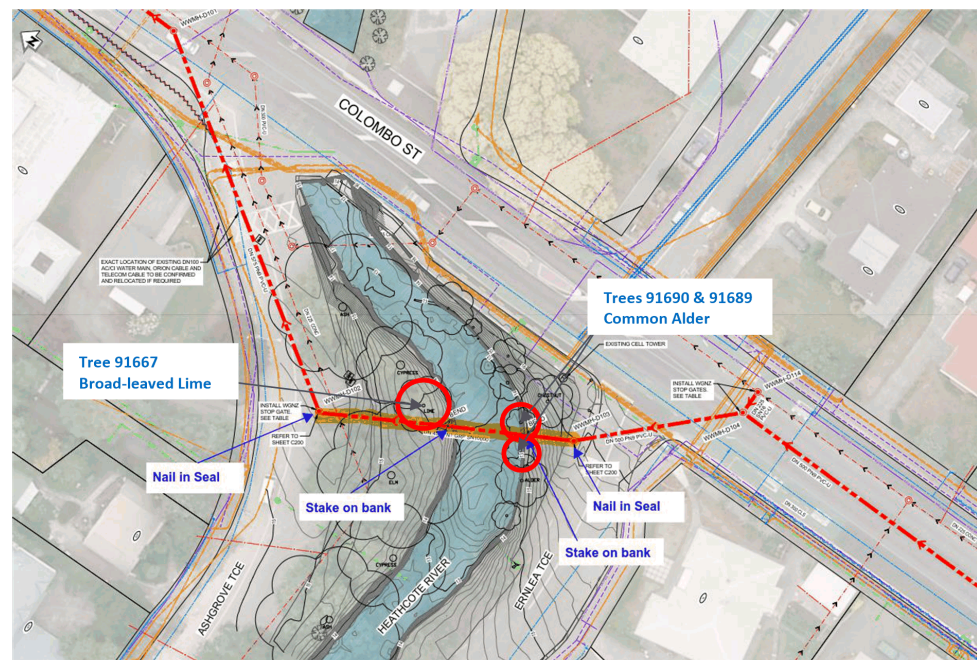



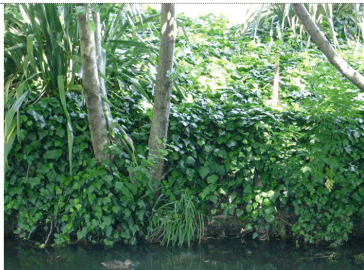
Figure 1: Alignment of Heathcote River Siphon and trees to be removed.





COLOMBO STREET WASTE WATER PROJECT - HEATHCOTE RIVER SIPHON

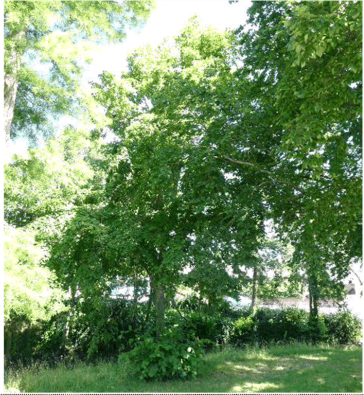

**2.1 Trees to be Removed**

The condition of the trees to be removed was evaluated in November 2017, using the Christchurch City Council tree assessment system (measurements are approximate).

Address:	1A Ernlea Terrace	
Tree ID:	91689	
Tree Species:	Common Alder ( <i>Alnus glutinosa</i> )	
Height:	12.0 metres	
Canopy Spread:	8.0 metres	
DBH:	0.5 metres (at base)	
Health:	3 (Fair)	
Form:	4 (Poor)	
Overall Condition:	4 (Poor)	
<p>The tree was found to have an imbalanced canopy possibly due to crown suppression caused by a previous tree on the southern side.</p> <p>The tree had three main stems originating from the tree base, with included (structurally weak) stem unions.</p> <p>The tree was located at the edge of the river, and on the side of a wooden retaining wall.</p>		

Address:	1A Ernlea Terrace	
Tree ID:	91690	
Tree Species:	Common Alder ( <i>Alnus glutinosa</i> )	
Height:	11.0 metres	
Canopy Spread:	8.0 metres	
DBH:	0.6 metres (at base)	
Health:	3 (Fair)	
Form:	4 (Poor)	
Overall Condition:	4 (Poor)	
<p>This tree was also found to have slightly sparse foliage density, and an imbalanced canopy possibly due to crown suppression caused by a previous tree on the southern side.</p> <p>The tree had four main stems originating from the tree base, with included (structurally weak) stem unions.</p> <p>The tree was located at the edge of the river, and on the side of a wooden retaining wall.</p>		

COLOMBO STREET WASTE WATER PROJECT - HEATHCOTE RIVER SIPHON

Address:	69 Colombo Street	
Tree ID:	91667	
Tree Species:	Broad-leaved Lime ( <i>Tilia platyphyllos</i> )	
Height:	11.0 metres	
Canopy Spread:	9.0 metres	
DBH:	0.30 metres	
Health:	2 (Good)	
Form:	2 (Good)	
Overall Condition:	2 (Good)	
<p>The tree was found to have reasonably good foliage density and structure, as was assessed as being in good condition.</p> <p>The subject tree is located between very large Swamp Cypress and English Elm trees, and the alignment of the siphon has been positioned to avoid those trees.</p> <p>It may be possible to retain the subject tree if the root system of the tree is not compromised by the works.</p>		

### 3.0 Replacement Planting

Replacement tree planting will be carried out as part of the project, and is expected to occur during the planting season following the completion of the construction works. A new tree will be planted to replace each tree that is removed.

- On the Ernlea Terrace side, it is proposed that two Small-leaved Kowhai (*Sophora microphylla*) trees are planted within the existing street garden area opposite 1A Ernlea Terrace. This is the landscaped area where the existing trees are located, and the replacement trees will be positioned further away from the river edge than the existing trees.
- On the Ashgrove Terrace side, it is proposed that one Broad-leaved Lime (*Tilia platyphyllos*) is planted to replace the existing tree (if the tree is removed). The replacement tree will be planted within the near vicinity of the existing tree.

COLOMBO STREET WASTE WATER PROJECT - HEATHCOTE RIVER SIPHON

**4.0 Tree Protection Requirements**

**4.1 Changes to the Design**

- 4.1.1 Any changes to the design or construction methodologies should only occur if resource consent compliance and appropriate tree protection measures can be achieved.

**4.2 Tree Protection Requirements**

- 4.2.1 The CCC Construction Standard Specification (CSS), Part 1, Section 19.0: protection of natural assets and habitats outlines tree protection requirements and methodologies, and it is recommended that this section of the CSS is complied with for the duration of the works.
- 4.2.2 A requirement of the CSS is that during construction a suitably experienced and qualified arborist is appointed to provide tree protection advice and supervision, to ensure that tree protection occurs during the works. It is recommended that this occurs.
- 4.2.3 To comply with 4.2.2 above, the contractor that is engaged to carry out the construction works should appoint a supervising arborist. The supervising Arborist will be required to assist with clearly identifying and protecting site features (i.e. trees and shrubs) that are to be retained and protected from potential damage.
- 4.2.4 The contractor's supervising arborist should produce a Tree Management Plan that is to be approved by the Council's arborist before the commencement of the site works. The contractor's Tree Management Plan should be comprehensive and address all aspects of the works within the vicinity of trees.

**4.3 Pruning of Trees and Shrubs**

- 4.3.1 Where clearance pruning is required for construction, this should be carried out by a suitably experienced qualified arborist and to accepted modern arboricultural standards.
- 4.3.2 Any root pruning that is required during the proposed works should be carried out by the supervising arborist, and should comply with any relevant tree protection rules.

**5.0 Recommendations**

- 5.1 It is recommended that the removal of the two Common Alder trees (trees 91689 and 91690) occurs for the installation of the waste water syphon.
- 5.2 If there are no viable alternatives, it is recommended that the Broad-leaved Lime (tree 91667) is also removed to allow the works to occur.
- 5.3 It is recommended that all trees that are retained within the vicinity of the works receive adequate tree protection to prevent damage during the works, and it is recommended that the CSS is complied with for the duration of the works.
- 5.4 It is recommended that replacement tree planting is carried out during the planting season following the completion of the works.

**Laurie Gordon**  
**Consulting Arborist**

---

COLOMBO STREET WASTE WATER PROJECT - HEATHCOTE RIVER SIPHON

---

### Christchurch City Council Tree Assessment Method

The tree inspections for this report were carried out in June 2017 and included non-invasive visual tree assessment methods (measurements are approximate). The condition of each tree was scored using the following Christchurch City Council tree assessment system (April 2017 version).

The condition of a tree is scored as Very Good (1), Good (2), Fair (3), Poor (4) or Very Poor (5). This relates to the Health and Form of a tree. The overall condition rating provided is the worst score for either Health or Form (e.g. if a tree scores Good for Health and Poor for Form, the Condition rating will be Poor).

**Very Good for Health;** where a tree has no more than approximately 5% disease or decline.

**Very Good for Form;** where a tree has no structural defects or abnormalities.

**Good for Health;** where a tree has no more than approximately 6-10% disease or decline.

**Good for Form;** where tree defects do not affect the structural integrity or continued well-being of the tree.

**Fair for Health;** where a tree has approximately 11-30% disease or decline.

**Fair for Form;** where defects are present, but can be rectified in order to maintain the structural integrity and continued well-being of tree.

**Poor for Health;** where a tree exhibits approximately 31-70% disease or decline.

**Poor for Form;** where tree maintenance may improve the framework or the continued well-being of tree, and defects result in loss of structural integrity that may be mitigated but are unlikely to be rectified.

**Very Poor for Health;** where a tree is in more than approximately 70% state of decline.

**Very Poor for Form;** where tree maintenance cannot improve the framework or the continued well-being of tree, and defects result in loss of structural integrity that cannot be mitigated or rectified.

---

Appendix 1 – Tree Assessment Method

---



## 8. Youth Achievement and Development Scheme 2017/18 - Millicent St Clare Smith

Reference: 18/36768

Contact: Emma Pavey

Emma.pavey@ccc.govt.nz

03 941 5107

### 1. Purpose and Origin of Report

#### Purpose of Report

- 1.1 The purpose of this report is for the Spreydon-Cashmere Community Board to consider Millicent St Clare Smith application received for the Board's 2017/18 Youth Achievement and Development Scheme.
- 1.2 There is currently \$1,800 remaining in this fund.

#### Origin of Report

- 1.3 This report is to assist the Community Board to consider an application for funding from Millicent St Clare Smith.

### 2. Significance

- 2.1 The decision(s) in this report is of low significance in relation to the Christchurch City Council's Significance and Engagement Policy.
  - 2.1.1 The level of significance was determined by the number of people affected and/or with an interest.
  - 2.1.2 Due to the assessment of low significance, no further community engagement and consultation is required.

### 1. Staff Recommendations

That the Spreydon-Cashmere Community Board:

1. Approves a grant of \$500 from its 2017/18 Youth Achievement and Development Scheme to Millicent St Clare Smith towards New Zealand U18 Women Challenge Cup of Asia.

### 3. Applicant 1 - Millicent Saint Clare Smith

- 3.1 Millicent Saint Clare Smith is 17 years of age and attends Marian College. Millicent lives with her parents and has one older brother who is married.
- 3.2 New Zealand Ice Hockey Federation has selected Millicent to participate in the 2017-2018 New Zealand U18 Women Challenge Cup of Asia competition which is being held in Kuala Lumpur, Malaysia from the 7<sup>th</sup> March to the 12<sup>th</sup> March 2018. Millicent represented New Zealand last year in the same competition held in Thailand where the team won the gold medal.
- 3.3 Millicent has been playing ice hockey since she was nine years of age and plays four times a week. Millicent has represented the Canterbury under 17's, Canterbury Seniors Women's and New Zealand Women's under 18's at ice hockey. Millicent has been developing her leadership skills and hope to travel with a senior leader's role within the team.

- 3.4 As well as ice hockey Millicent plays turf hockey, she loves reading and music. She has also been refereeing and would like to start to coach other ice hockey players.
- 3.5 Millicent has been able to save money towards the trip through her part time job gardening and cleaning.
- 3.6 The following table provides a breakdown of the costs for Millicent St Clare Smith:

EXPENSES	Cost (\$)
Flights	\$2,346.00
Accommodation	\$730
Uniforms	\$124
<b>Total</b>	<b>\$3,200</b>

- 3.7 This is the second time the applicant has applied for funding.

## Attachments

There are no attachments to this report.

## Confirmation of Statutory Compliance

Compliance with Statutory Decision-making Requirements (ss 76 - 81 Local Government Act 2002).

(a) This report contains:

- (i) sufficient information about all reasonably practicable options identified and assessed in terms of their advantages and disadvantages; and
- (ii) adequate consideration of the views and preferences of affected and interested persons bearing in mind any proposed or previous community engagement.

(b) The information reflects the level of significance of the matters covered by the report, as determined in accordance with the Council's significance and engagement policy.

## Signatories

<b>Author</b>	Emma Pavey - Community Recreation Advisor
<b>Approved By</b>	Arohanui Grace - Manager Community Governance, Spreydon-Cashmere

## 9. Youth Achievement and Development Scheme 2017/18 - Te Marino Violet Rose Roberts

Reference: 18/42416

Contact: Emma Pavey

Emma.pavey@ccc.govt.nz

03 941 5107

### 1. Purpose and Origin of Report

#### Purpose of Report

- 1.1 The purpose of this report is for the Spreydon-Cashmere Community Board to consider Te Marino Violet Rose Roberts applications received for the Board's 2017/18 Youth Achievement and Development Scheme.
- 1.2 There is currently \$1,800 remaining in this fund.

#### Origin of Report

- 1.3 This report is to assist the Community Board to consider an application for funding from Te Marino Violet Rose Roberts.

### 2. Significance

- 2.1 The decision(s) in this report is of low significance in relation to the Christchurch City Council's Significance and Engagement Policy.
  - 2.1.1 The level of significance was determined by the number of people affected and/or with an interest.
  - 2.1.2 Due to the assessment of low significance, no further community engagement and consultation is required.

### 1. Staff Recommendations

That the Spreydon-Cashmere Community Board:

1. Approves a grant of \$250 from its 2017/18 Youth Achievement and Development Scheme to Te Marino Violet Rose Roberts towards the Canterbury U17 Girls National Tournament in Dunedin.

### 3. Applicant 1 - Te Marino Violet Rose Roberts

- 3.1 Te Marino Violet Rose Roberts is 15 years of age and attends Riccarton High School. Te Marino lives with her parent and younger brother in Hoon Hay.
- 3.2 Te Marino has been selected to attend the U17 Girls National Softball Tournament being held in Dunedin from the 17-21 January. This application was received within the normal processing timelines but due to the Christmas and New Year period it will be reported retrospectively.
- 3.3 Te Marino has been playing softball for over five years and plays for the Sydenham Kereru Club which her grandparents founded many years ago. A normal week would consist of three games of softball on a Saturday, one on a Monday and training in the week. Te Marino has won awards for the Best All Rounder, Most Outstanding and Top Catcher in 2017. She also helps to coach the younger grade teams and shares her expertise and experiences with them.
- 3.4 As well as softball, Te Marino is part of the local Baha'i community and has recently helped with the designs for the Pou which was installed at Ernlee Clarke Reserve in October 2017. She is also

a keen student and was awarded the Te Reo Rangatira Award for the highest achieving student in Maori Te Reo and has successfully passed her Level 3 Te Reo Maori papers this year even though she is a Year 11 student.

3.5 Te Marino is actively fundraising with her softball team and are hosting pizza nights.

3.6 The following table provides a breakdown of the costs for Te Marino:

EXPENSES	Cost (\$)
Travel and Accommodation	\$300
Softball Levy	\$200
<b>Total</b>	<b>\$500</b>

3.7 This is the first time the applicant has applied for funding.

## Attachments

There are no attachments to this report.

## Confirmation of Statutory Compliance

Compliance with Statutory Decision-making Requirements (ss 76 - 81 Local Government Act 2002).

(a) This report contains:

- (i) sufficient information about all reasonably practicable options identified and assessed in terms of their advantages and disadvantages; and
- (ii) adequate consideration of the views and preferences of affected and interested persons bearing in mind any proposed or previous community engagement.

(b) The information reflects the level of significance of the matters covered by the report, as determined in accordance with the Council's significance and engagement policy.

## Signatories

<b>Author</b>	Emma Pavey - Community Recreation Advisor
<b>Approved By</b>	Arohanui Grace - Manager Community Governance, Spreydon-Cashmere

## 10. Spreydon-Cashmere Community Board Area Report

Reference: 17/1483182

Contact: Faye Collins

Faye.collins @ccc.govt.nz

941 5108

### 1. Purpose of Report

This report provides information on initiatives and issues current within the Community Board area, to provide the Board with a strategic overview and inform sound decision making.

### 2. Staff Recommendations

That the Spreydon-Cashmere Community Board:

1. Receives the Area Update for January 2018.

### 3. Community Board Activities and Forward Planning

#### 3.1 Upcoming Meetings:

**Spreydon-Cashmere Community Board Meeting, Friday 16 February 2018, 8am.**

**Joint Spreydon-Cashmere/Banks Peninsula Community Boards Meeting, Friday 2 March  
12.30pm- 5.00pm at Beckenham. (To be confirmed)**

**Spreydon-Cashmere Community Board Meeting, Tuesday 6 March 2018, 5pm.**

#### 3.2 Memos/Information/Advice to the Board

##### 3.2.1 26 Grove Road.

At its meeting on 1 August 2017 the Board decided to:

Receive the staff memorandum on the property at 26 Grove Road adjacent to Cornelius O'Connor Reserve and request further staff advice on:

- a. the specific reserve to people ratio in the Addington area
- b. the effect of a possible future population increase in Addington,
- c. the state of health and value of the existing trees on the property,

with a view to considering the benefits of the purchase of 26 Grove Road for addition to Cornelius O'Connor Reserve.

##### 3.2.2 Parks staff have provided the requested advice in the memorandum attached to this report. The advice is :

The Public Open Space Strategy sets targets of achieving 1.0 hectare per 1000 people for Neighbourhood Parks as a level of service, and where possible a neighbourhood park within 500m walking distance of people's homes. There are currently 2366 people living within 500m of Cornelius O'Connor Reserve. Within the Addington area, focussing on the

catchments adjacent to Cornelius O'Connor Reserve, and bounded by Lincoln Road, Moorhouse Ave, Antigua Street, and Brougham Street, there are four open space areas suitable for play space. They are: Mountfort Park, Cornelius O'Connor Reserve, Ruskin Reserve and Addington Park. These reserves total 3.6637 hectares in total.

In addition, within and immediately adjacent to the catchment area are Braddon Reserve, Baxters Drain, Disraeli Reserve and Addington Cemetery which have not been counted in the calculation, as while they are open space, they are limited in their use as play spaces. Also within the catchment is the edge of South Hagley Park.

The effect of possible future population increase in Addington

Looking at the population predictions for the meshblock areas based around Cornelius O'Connor Reserve, it is predicted that the population for the area will rise to 3,152 by 2048. Currently there is open space provision of 3.6637 hectares for this catchment. Based on this there is sufficient open space provision to 2048 and beyond

The state of health of the existing trees at 26 Grove Road

A visual inspection of the trees at 26 Grove Road was carried out. The trees on the site were found to be in a fair to very poor condition. This has been caused by a number of factors, including poor maintenance practices (topping), significant structural defects caused by included bark and codominance, and overcrowding.

Based on this information staff advise that 26 Grove Road is not required to meet open space needs now or in the future for this catchment. The trees contained within 26 Grove Road are not in a condition that would warrant the purchase of the property to protect them.

### 3.3 Board area Consultations/Engagement/Submission opportunities

#### 3.3.1 Dyers Pass Road proposed safety improvements

The Dyers Pass Road proposed speed limit change and no passing lines was open for feedback over the period 21st November 2017 - 18th December 2017. 532 submissions were received in response to the consultation. The project team is currently analysing the submissions and will produce a report to a joint meeting of the Spreydon-Cashmere and Banks Peninsula Community Boards, for a decision on the proposed no passing lines and a recommendation to council regarding the proposed speed limit. A tentative date of 2 March 2018 has been set for the joint Boards meeting.

### 3.4 Annual Plan and Long Term Plan matters

No report

### 3.5 Board Reporting

No report.

### 3.6 Requests for information from Board meeting on Newsline

## 4. Community Board Plan – Update against Outcomes

- 4.1 The Spreydon-Cashmere Community Board Plan 2017-19 adopted last year outlines local issues, ambitions and concerns that the Board plans to address, pursue and try to resolve. Work is already underway on a number of these matters and a process of reviewing the progress made to date and considering what still needs to be done is about to get underway with a workshop on 9 February 2018.

- 4.2 The Spreydon-Cashmere Community Board Plan 2017-19 includes the creation of an Age-Friendly action plan that the Community Board agreed to develop in April 2017. A staff memorandum attached to this report recommends steps to develop the action plan, including delegation by the board to two members to take part in the establishment working party with staff.

## 5. Significant Council Projects in the Board Area

### 5.1 Strengthening Community Fund Projects

No Report

### 5.2 Other partnerships with the community and organisations

No Report

### 5.3 Community Facilitates (updates and future plans)

No Report

### 5.4 Infrastructure projects underway

No Report

### 5.5 Events report back

No Report

## 6. Significant Community Issues, Events and Projects in the Board Area

No Report.

## 7. Parks, Sports and Recreation Update (bi-monthly)

### 7.1 Local Parks Update

The next update will be provided in the February 2018 report.

## 8. Community Board funding budget overview and clarification

- 8.1 Funding update attached.

## Attachments

No.	Title	Page
A <a href="#">↓</a>	Age-friendly Spreydon-Cashmere Memorandum to Community Board 30 January 2018	41
B <a href="#">↓</a>	Memo to Spreydon-Cashmere Community Board regarding Grove Road	42

## Signatories

<b>Author</b>	Faye Collins - Community Board Advisor
<b>Approved By</b>	Arohanui Grace - Manager Community Governance, Spreydon-Cashmere



## Memorandum

**Title** Age-friendly Spreydon Cashmere Action Plan

**Author** Jay Sepie, Community Development Adviser, Spreydon Cashmere

**For** Spreydon Cashmere Community Board

**Date** 30 January 2018

### Purpose

The purpose of this memorandum to seek the support and involvement of the Community Board to establish a working party with staff in order to develop an Age-friendly Spreydon-Cashmere Action Plan.

### Background

The Spreydon-Cashmere Community Board has a long standing interest in the issues faced by older adults in the area. Encouraging intergenerational and social connectedness of older adults is a key consideration the Board has highlighted in planning. The Board has also noted that the Spreydon-Cashmere area contains proportionately more older adults than other parts of the city.

Following information received in the 2016 "Older Adults" report for the board, and a briefing from the Director of the Office for Seniors and staff in March 2017, the board agreed to develop a Spreydon-Cashmere Age-friendly Collaborative Action Plan. The Spreydon-Cashmere Community Board Plan 2017-19 includes the development this action plan.

### Proposal

Staff recommend that the Community Board delegate two members to work closely with staff in a working party to inform, scope, and develop the action plan parameters. Staff suggest that the working party can also identify the existing opportunities and relevant stakeholders to transition the initial working party to a wider steering group that can build and expand on local collaborations in order to create the action plan.

While the core outcome for this work will be the creation of an action plan in 2018, the anticipated wider benefits and results of the Age-friendly strategy development include:

- ☐ Enabling the Community Board to identify and draw all current activity into a cohesive age-friendly framework with relative ease, and then identify strengths to capitalise and gaps which might point to future work.
- ☐ Provision of a sound and best practice basis for proposing new Council activity, and for linking and enhancing current programmes
- ☐ Enabling the development of strategic partnerships with other agencies and organisations working towards identified common goals.

### Recommendation:

That the Spreydon-Cashmere Community Board delegate two members to join staff on the initial working party to develop the Age-Friendly Spreydon-Cashmere Action Plan.

**CHRISTCHURCH CITY COUNCIL**  
**Citizens and Community Group**

**Memorandum**

**Date:** 3<sup>rd</sup> January 2018  
**To:** Spreydon – Cashmere Community Board  
**from:** Brent Smith: Acting Head of Parks  
**Re:** Community Board Resolution; SCCB/2017/00123

*That the Spreydon-Cashmere Community Board decided to:*

*Receive the staff memorandum on the property at 26 Grove Road adjacent to Cornelius O'Connor Reserve and request further staff advice on:*

- a. the specific reserve to people ratio in the Addington area*
- b. the effect of a possible future population increase in Addington,*
- c. the state of health and value of the existing trees on the property,*

*with a view to considering the benefits of the purchase of 26 Grove Road for addition to Cornelius O'Connor Reserve.*

Staff have received the request from the Spreydon-Cashmere Community Board and comment as follows:

**The specific reserve to people ratio in Addington**

Within the Addington area, focussing on the catchments adjacent to Cornelius O'Connor Reserve, and bounded by Lincoln Road, Moorhouse Ave, Antigua Street, and Brougham Street, there are four open space areas suitable for play space. They are:- Mountfort Park, Cornelius O'Connor Reserve, Ruskin Reserve and Addington Park. These reserves total **3.6637 hectares** in total. Addington Park is also counted in the figures as it performs a neighbourhood park function for the catchment as well.

In addition, within and immediately adjacent to the catchment area are Braddon Reserve, Baxters Drain, Disraeli Reserve and Addington Cemetery which have not been counted in the calculation, as while they are open space, they are limited in their use as play spaces. Also within the catchment is the edge of South Hagley Park.

The Public Open Space Strategy sets targets of achieving 1.0 hectare per 1000 people for Neighbourhood Parks as a level of service, and where possible a neighbourhood park within 500m walking distance of people's homes. There are currently 2366 people living within 500m of Cornelius O'Connor Reserve. Many of these households are also serviced by Ruskin Reserve, Mountfort Park and Addington Park as well (not to mention the other open spaces).

**The effect of possible future population increase in Addington**

Looking at the population predictions for the meshblock areas based around Cornelius O'Connor Reserve, it is predicted that the population for the area will rise to 3,152 by 2048. Currently there is open space provision of 3.6637 hectares for this catchment. Based on this there is sufficient open space provision to 2048 and beyond

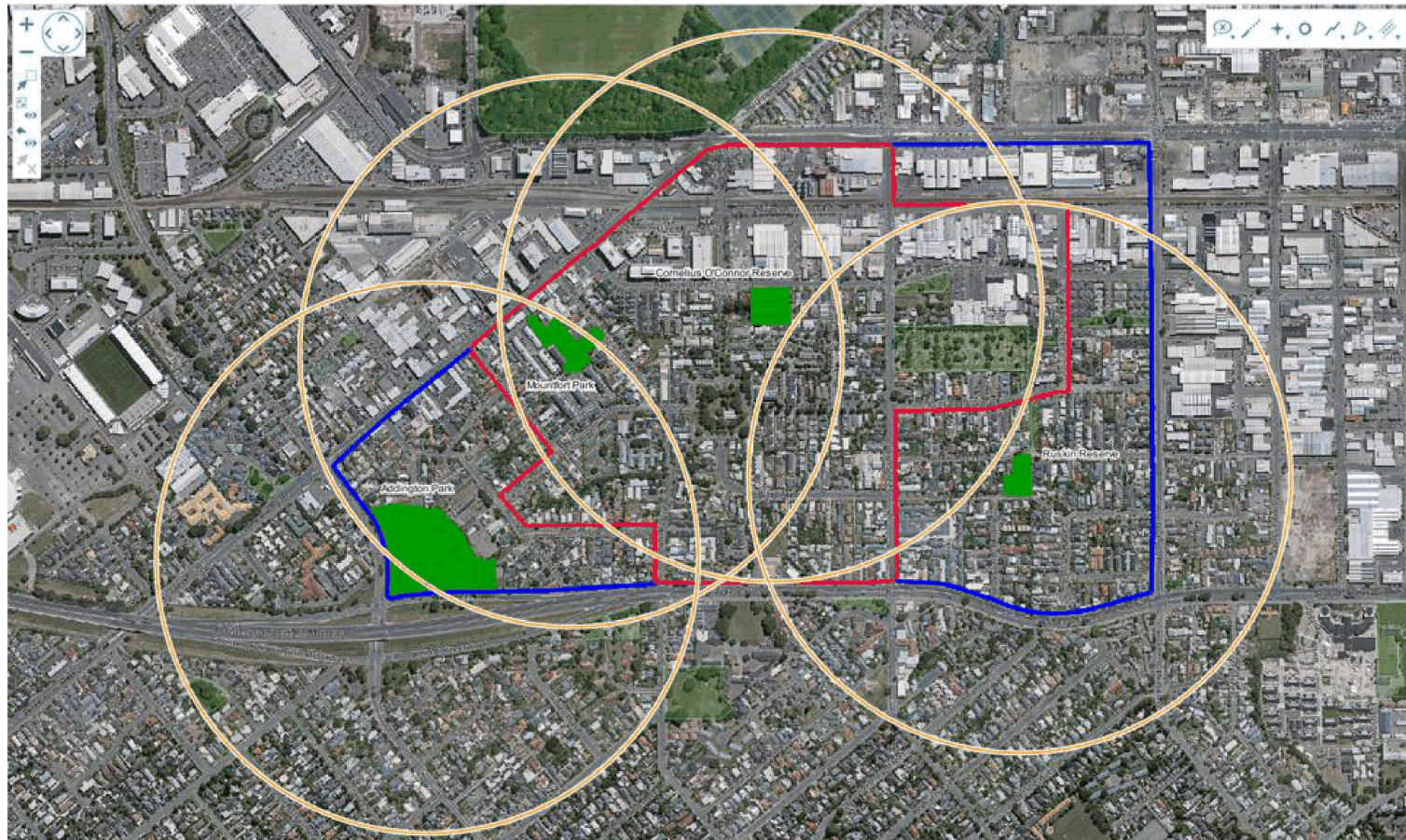
**The state of health of the existing trees at 26 Grove Road**

A visual inspection of the trees at 26 Grove Road was carried out. The trees on the site were found to be in a fair to very poor condition. This has been caused by a number of factors, including poor maintenance practices (topping), significant structural defects caused by included bark and codominance, and overcrowding.

**Summary**

The proposed site at 26 Grove Road is not required to meet open space needs now or in the future for this catchment. The trees contained within 26 Grove Road are not in a condition that would warrant the purchase of the property to protect them.





## 2013 Census Meshblock Information

	Meshblock	2013 Census, census night population count	Number of Households (Projection based on 2013 Census)						Number of Households (Projection based on 2013 Census) multiplied by 2.6 - average number of people per household (rounded to nearest whole number)					
		2013	2013	2017	2021	2028	2038	2048	2013	2017	2021	2028	2038	2048
500m Walking Distance from Cornelius O'Connor Reserve (Red Boundary)	2658400	24	9	9	9	9	9	9	23	23	23	23	23	23
	2658601	15	5	6	8	10	15	18	13	16	21	26	39	47
	2658602	45	19	19	21	22	26	28	49	49	55	57	68	73
	2658603	45	19	19	21	22	25	27	49	49	55	57	65	70
	2658604	42	22	22	23	23	24	25	57	57	60	60	62	65
	2659200	0	0	0	0	0	0	0	0	0	0	0	0	0
	2659301	3	0	0	0	0	0	0	0	0	0	0	0	0
	2659302	0	0	0	0	0	0	0	0	0	0	0	0	0
	2659400	0	0	0	0	0	0	0	0	0	0	0	0	0
	2659500	237	109	116	121	128	141	149	283	302	315	333	367	387
	2659600	183	104	146	150	155	165	171	270	380	390	403	429	445
	2659700	114	50	52	55	58	65	69	130	135	143	151	169	179
	2659801	51	32	32	35	38	45	48	83	83	91	99	117	125
	2659802	72	32	33	34	35	37	38	83	86	88	91	96	99
	2659803	51	22	23	25	27	32	35	57	60	65	70	83	91
	2659804	39	19	19	21	23	27	30	49	49	55	60	70	78
	2659900	237	104	106	113	122	138	148	270	276	294	317	359	385
	2660001	57	32	35	38	41	47	51	83	91	99	107	122	133
	2660002	57	33	33	34	35	38	40	86	86	88	91	99	104
	2660003	27	13	13	13	13	14	15	34	34	34	34	36	39
	2660100	615	139	145	149	155	166	172	361	377	387	403	432	447
	2660300	171	60	62	66	72	84	91	156	161	172	187	218	237
	2660500	54	19	20	25	30	41	48	49	52	65	78	107	125
	<b>Total</b>	<b>2,139</b>	<b>841</b>	<b>913</b>	<b>959</b>	<b>1,020</b>	<b>1,139</b>	<b>1,209</b>	<b>2,185</b>	<b>2,366</b>	<b>2,500</b>	<b>2,647</b>	<b>2,961</b>	<b>3,152</b>

## 11. Elected Members' Information Exchange

---

This item provides an opportunity for Board Members to update each other on recent events and/or issues of relevance and interest to the Board.