

Fendalton-Waimairi-Harewood Community Board AGENDA

Notice of Meeting:

An ordinary meeting of the Fendalton-Waimairi-Harewood Community Board will be held on:

Date: Monday 29 January 2018
Time: 4.30pm
Venue: Boardroom, Fendalton Service Centre,
Corner Jeffreys and Clyde Roads, Fendalton

Membership

Chairperson	David Cartwright
Deputy Chairperson	Sam MacDonald
Members	Aaron Campbell
	Linda Chen
	Jamie Gough
	Aaron Keown
	Raf Manji
	Shirish Paranjape
	Bridget Williams

22 January 2018

Matthew McLintock
Manager Community Governance, Fendalton-Waimairi-Harewood
941 6231
matthew.mclintock@ccc.govt.nz
www.ccc.govt.nz

Note: The reports contained within this agenda are for consideration and should not be construed as Council policy unless and until adopted.
If you require further information relating to any reports, please contact the person named on the report.

To view copies of Agendas and Minutes, visit:

<https://www.ccc.govt.nz/the-council/meetings-agendas-and-minutes/>

Part A	Matters Requiring a Council Decision
Part B	Reports for Information
Part C	Decisions Under Delegation

TABLE OF CONTENTS

C	1.	Apologies.....	4
B	2.	Declarations of Interest.....	4
C	3.	Confirmation of Previous Minutes	4
B	4.	Public Forum	4
B	5.	Deputations by Appointment.....	4
B	6.	Presentation of Petitions	4
B	7.	Correspondence	11

STAFF REPORTS

A	8.	Jet Place, Harewood - Land to be dedicated as Road	19
C	9.	Fendalton-Waimairi-Harewood 2017-18 Discretionary Response Fund - Application - The Village Community Centre.....	31
C	10.	Fendalton-Waimairi-Harewood 2017-18 Discretionary Response Fund - Application - St Patrick's School Bryndwr After School Care Programme	35
C	11.	Fendalton-Waimairi-Harewood 2017-18 Youth Development Fund - Applications - Ella Jean MacDonald (Touch New Zealand National Tournament)	39
B/C	12.	Fendalton-Waimairi-Harewood Community Board Area Report - January 2018	41
B	13.	Elected Members' Information Exchange	67

1. Apologies

At the close of the agenda no apologies had been received.

2. Declarations of Interest

Members are reminded of the need to be vigilant and to stand aside from decision making when a conflict arises between their role as an elected representative and any private or other external interest they might have.

3. Confirmation of Previous Minutes

That the minutes of the Fendalton-Waimairi-Harewood Community Board meeting held on [Monday, 11 December 2017](#) be confirmed (refer page 5).

4. Public Forum

A period of up to 30 minutes may be available for people to speak for up to five minutes on any issue that is not the subject of a separate hearings process.

It is intended that the public forum session will be held at 4.30pm.

5. Deputations by Appointment

Deputations may be heard on a matter or matters covered by a report on this agenda and approved by the Chairperson.

5.1 Mr Hamish Martin

Mr Hamish Martin, a resident from Coldstream Court, will speak to the Board regarding safety issues at the exit of the Coldstream Walkway into Coldstream Court.

6. Presentation of Petitions

There were no petitions received at the time the agenda was prepared.

Fendalton-Waimairi-Harewood Community Board OPEN MINUTES

Date: Monday 11 December 2017
Time: 4pm
Venue: Boardroom, Fendalton Service Centre,
Corner Jeffreys and Clyde Roads, Fendalton

Present

Chairperson	David Cartwright
Deputy Chairperson	Sam MacDonald
Members	Aaron Campbell
	Linda Chen
	Jamie Gough
	Aaron Keown
	Raf Manji
	Shirish Paranjape
	Bridget Williams

7 December 2017

Matthew McLintock
Manager Community Governance, Fendalton-Waimairi-Harewood
941 6231
matthew.mclintock@ccc.govt.nz
www.ccc.govt.nz

To view copies of Agendas and Minutes, visit:
www.ccc.govt.nz/Council/meetingminutes/agendas/index

-
- Part A** **Matters Requiring a Council Decision**
Part B **Reports for Information**
Part C **Decisions Under Delegation**
-

The agenda was dealt with in the following order.

1. Apologies

Part C

Community Board Resolved FWHB/2017/00138

That the apology received for lateness from Aaron Keown, be accepted.

David Cartwright/Jamie Gough

Carried

2. Declarations of Interest

Part B

There were no declarations of interest recorded.

3. Confirmation of Previous Minutes

Part C

That the minutes of the Fendalton-Waimairi-Harewood Community Board meeting held on Monday 27 November 2017, be confirmed.

David Cartwright/Sam MacDonald

Carried

4. Public Forum

Part B

There were no public forum presentations.

5. Deputations by Appointment

Part B

There were no deputations by appointment.

6. Presentation of Petitions

Part B

There was no presentation of petitions.

7. Correspondence

There was no correspondence received.

Aaron Keown arrived at the meeting at 4.05pm.

8. Tonbridge Street - Parking Restrictions

Community Board Resolved FWHB/2017/00139 (Original Staff Recommendation accepted without change)

Part C

The Fendalton-Waimairi-Harewood Community Board resolved to:

1. Approve that the parking and stopping of vehicles be prohibited at any time on the east side of Tonbridge Street commencing at its intersection with Rastrick Street and extending in a southerly direction for a distance of four metres.
2. Approve that the parking of vehicles be restricted to a maximum period of 120 minutes on the east side of Tonbridge Street commencing at a point four metres south of its intersection with Rastrick Street and extending in a southerly direction for a distance of 12 metres. This restriction is to apply from Monday to Friday on school days.
3. Approve that the parking and stopping of vehicles be prohibited at any time on the east side of Tonbridge Street commencing at a point 16 metres south of its intersection with Rastrick Street and extending in a clockwise direction around the cul-de-sac turning head, and terminating on the west side of Tonbridge Street at a point 12 metres south of the prolongation of the Rastrick Street southern kerb line.

Jamie Gough/Linda Chen

Carried

9. Kendal Avenue - Parking Restriction

Community Board Resolved FWHB/2017/00140 (Original Staff Recommendation accepted without change)

Part C

That the Fendalton-Waimairi-Harewood Community Board:

1. Approve that the parking of vehicles be restricted to a maximum period of 10 minutes on the south side of Kendal Avenue commencing at a point 64 metres east of its intersection with Cranbrook Avenue and extending in an easterly direction for a distance of 27 metres. This restriction is to apply between the hours of 8.15am to 9.15am and 2.15pm to 3.15pm on school days.

Shirish Paranjape/Linda Chen

Carried

10. Fendalton-Waimairi-Harewood 2017-18 Youth Development Fund -

Applications - Courtney Godinet, Cali Thompson, Riley Thompson, Lucas Parry, Joel Parry (Touch New Zealand National Tournament), Christchurch Boys' High School (World Schools Rugby Festival), Hannah Stanley (Ranger Jamboree)

Community Board Resolved FWHB/2017/00141 (Original Staff Recommendation accepted without change)

Part C

The Fendalton-Waimairi-Harewood Community Board resolved to:

1. Approve the making of a grant of \$200 each, totalling \$1,000, from its 2017-18 Youth Development Fund to Courtney Godinet, Cali Thompson, Riley Thompson, Lucas Parry and Joel Parry towards the costs of competing in the Touch New Zealand National Tournament in Auckland from 9 to 11 February 2018.
2. Approve the making of a grant of \$1,500 from its 2017-18 Youth Development Fund to Christchurch Boys' High School towards the costs of the 10 players who reside in the Board's area, competing in the World Schools Rugby Festival in South Africa from 2 to 7 April 2018.
3. Approve the making of grant of \$200 from its 2017-18 Youth Development Fund to Hannah Stanley towards the costs of attending the 2018 Ranger Event in Masterton from 5 to 12 January 2018.

David Cartwright/Bridget Williams

Carried

11. Fendalton-Waimairi-Harewood Community Board - Meeting Schedule - 2018

Community Board Resolved FWHB/2017/00142 (Original Staff Recommendation accepted without change)

During the discussion members asked staff to investigate whether some meetings could be held at other venues in the Board area. The Board's regular meeting venue is the Boardroom, Fendalton Service Centre, corner Jeffreys and Clyde Roads.

Part C

The Fendalton-Waimairi-Harewood Community Board resolved to:

1. Adopt the following meeting schedule from 29 January to 31 December 2018:

Monday 29 January 2018	4.30pm	Monday 16 July 2018	4.30pm
Monday 12 February 2018	4.30pm	Monday 6 August 2018	4.30pm
Monday 26 February 2018	4.30pm	Monday 20 August 2018	4.30pm
Monday 12 March 2018	4.30pm	Monday 3 September 2018	4.30pm
Tuesday 3 April 2018	4.30pm	Monday 17 September 2018	4.30pm
Monday 16 April 2018	4.30pm	Monday 1 October 2018	4.30pm
Monday 30 April 2018	4.30pm	Monday 15 October 2018	4.30pm
Monday 14 May 2018	4.30pm	Monday 29 October 2018	4.30pm

Tuesday 5 June 2018	4.30pm	Monday 12 November 2018	4.30pm
Monday 18 June 2018	4.30pm	Monday 26 November 2018	4.30pm
Monday 2 July 2018	4.30pm	Monday 10 December 2018	4.30pm

Sam MacDonald/David Cartwright

Carried

12. Fendalton-Waimairi-Harewood Community Board - Recess Committee 2017-18

Community Board Resolved FWHB/2017/00143 (Original Staff Recommendation accepted without change)

Part C

The Fendalton-Waimairi-Harewood Community Board resolved to:

1. Appoint a Recess Committee comprising the Board Chairperson or Deputy Chairperson and any two Board members available, to be authorised to exercise the delegated powers of the Fendalton-Waimairi-Harewood Community Board for the period following its ordinary meeting on 11 December 2017 up until the Board resumes normal business on 29 January 2018.
2. That the application of any such delegation be reported back to the Board for record purposes.
3. Note that any meeting of the Recess Committee will be publicised and details forwarded to all Board members.

David Cartwright/Jamie Gough

Carried

13. Fendalton-Waimairi-Harewood Community Board Area Report - December 2017

During its discussions, the Board considered that the draft Suburban Parking Policy should include an option for Residents' Parking Permits in areas such as those covered by the University Parking Plan and that the Board should make a submission to this effect when the draft Suburban Parking Policy is open for consultation.

Staff Recommendations

That the Fendalton-Waimairi-Harewood Community Board:

1. Receive the Area Report for December 2017.
2. Receive the information in the memorandum from staff regarding the University Parking Plan Review.

Community Board Resolved FWHB/2017/00144

Part B

The Fendalton-Waimairi-Harewood Community Board decided to:

1. Receive the Area Report for December 2017.
2. Receive the information in the memorandum from staff regarding the University Parking Plan Review and;
3. Agree that Area One of the University Parking Plan and all other proposed areas within the plan be placed on hold until the Suburban Parking Policy is finalised in 2018 and decisions can then be made in relation to the Residents' Parking Permit Policy, and that staff will continue with a street by street basis consultation approach, if and when the need arises.

The Board further agreed that the Suburban Parking Policy should include Residents' Parking Permits and that the Board should submit on this draft policy at the appropriate time.

David Cartwright/Sam MacDonald

Carried

14. Elected Members' Information Exchange

Part B

Board members exchanged information on matters of current interest, including:

- 14.1 The final meeting for the year of the Riccarton Bush Trust will be held on Wednesday 13 December 2017.
- 14.2 The Canterbury Neighbourhood Trust is seeking a community representative from the Board's area.
- 14.3 Residents have raised concerns regarding the weeping road seal on Cavendish Road and Gardiners Road and the damage it is causing to property. The road has now been resurfaced but concerns remain that the issue will reoccur.
- 14.4 A meeting of the Funding Review Working Party is scheduled for this week. The Board hopes that this review will include another look at the way Board funding is allocated.
- 14.5 Water Extraction Belfast
Members were advised of the public's concern around the water extraction operation in Belfast.

The Board requested that staff provide advice regarding the Board's ability to issue public support regarding the water extraction businesses in Belfast.

The Chairperson wished everyone a Merry Christmas and thanked staff for their support over the year.

Meeting concluded at 4.35pm

CONFIRMED THIS 29TH DAY OF JANUARY 2018

**DAVID CARTWRIGHT
CHAIRPERSON**

7. Correspondence

Reference: 17/1467944

Contact: Matt McLintock matt.mclintock@ccc.govt.nz 941-6728

1. Purpose of Report

Correspondence has been received from:

Name	Subject
Mr Purcell	Idris Road/Glandovey Road/Straven Road Traffic Issues
Glandovey, Idris and Straven Residents Association Incorporated	Glandovey/Idris and Straven Road Changes and Funding for 2018
Papanui Baptist Church	Thanking the Board for its support during 2017
Chief Executive, Christchurch City Council	Regeneration of Bishopdale Mall

2. Staff Recommendations

That the Fendalton-Waimairi-Harewood Community Board:

Receive the information in the correspondence report dated 29 January 2018.

Attachments

No.	Title	Page
A ↓	Mr Purcell re Idris-Glandovey-Straven Road Traffic Issues	12
B ↓	Glandovey Idris Straven Residents Association	13
C ↓	Fendalton Waimairi Harewood Community Board correspondence from Papanui Baptist Church thanking the Board for its support during 2017	16
D ↓	Bishopdale Mall Regeneration	17

Sent: Monday, 11 December 2017 12:57:27 p.m. (UTC+12:00) Auckland, Wellington
To: Dalziel, Lianne
Subject: Glandovey Idris Straven

Dear Lianne,

I, Stephen Gregory Purcell, reside at 110 Fendalton Road on the corner of Fendalton Road and Idris Road. As you may be aware the house carries a category one heritage rating. We have lived at this address for 13 1/2 years and only since the altering of the Glandovey and Idris road intersection have we seen an influx of the B-train truck and trailer units. They start at about 4.30 in the morning and the last ones appear around 10.30 at night. To say they were noisy would be an understatement. Because we are right on the intersection we get engine brakes and air brakes or a combination of both when the lights are red. Then there is the noise that the acceleration of the vehicles make as they go through several gears when they leave the intersection, not to mention the amount of toxic exhaust emission. Worse still if they happen to get a green light, they storm through, and the poor old house shakes like a 3.8 after-shock. I have door-knocked the length of Straven Road to enlist members for our association, 100% of the residents that were at home over the two day period, joined our association, all of them experiencing the same shaking when the truck and trailer units go past. We now have over 50 members from Straven Road.

During our time here we have witnessed in excess of 40 accidents at the intersection most involving cars, motorbikes and at least one cyclist, fortunately none fatal. We haven't experienced a truck and trailer unit being involved yet but it is only a matter of time, and the way these things charge through the lights I have no doubt there will be fatalities.

Surely making the roads safer for cyclists is imperative as Glandovey, Idris and Straven roads carry traffic to and from several schools in the area. If more cycles were used there would be less congestion at around 8.30am and 3pm when all the parents have to drop off and pick the up kids because it's not safe to cycle to or from school. This area is described as SAM or Special Amenities Area, well it certainly does not feel particularly special at the moment.

We, along with all our concerned neighbours, are hoping and praying something can be done to rectify this,

Yours sincerely

Steve Purcell

Glandovey, Idris and Straven Residents Association Incorporated

email: gisachch@gmail.com www.gisachch.com
P.O. Box 2082, Christchurch 8140, New Zealand

11 December 2017

The Fendalton, Waimari and Harewood Community Board
Christchurch City Council
PO Box 237
CHRISTCHURCH

For: The Chair: Mr Cartwright

Dear Sir / Madam,

RE: Changes and planning and funding for 2018

1. Immediate truck ban

We have been advised that the Board today approved a heavy vehicle ban on relevant streets (Glandovey, Idris, Heaton and we hope Straven) to be implemented as soon as possible. Thank you. Sleep, reduced noise and pollution and fewer safety risks will be most welcome. This is also a step towards increased cycling and walking.

If it helps, we can meet swiftly to have input into the nature of the ban, in the event it is not absolute except, for example, for buses on service in the case of all roads except Glandovey West (it does not form a bus route so presumably can be more absolute). We understand the ban is unlikely to be implemented before Christmas. Please can it be implemented by early January 2018.

We hope, as part of this, these roads will be removed from the strategic freight network and associated plans. As said on 27 November 2017, the Independent Hearing Panel in the Replacement District Plan expressly did not enshrine those routes because, it said, the routes will change over time.

We hope other swift changes can be made urgently, this year, to help reduce the traffic to better match the classifications of the roads and to improve life and safety for residents and children. These could include steps to control boy racers and traffic management changes by, for example, preferring straight ahead traffic at the Fendalton / Glandovey intersection, rather than having such a long left turn signal into Glandovey Road, and using right turn arrows from Glandovey Road into Rossall Street and from Straven into Fendalton Road.

2. Other changes and their funding for 2018

We are anxious to progress cycle lanes, pedestrian and disability access, amenity and heritage. You have much supporting information including:

- (a) our letter of 22 March 2017, with road measurements.

- (b) the research report dated 24 August 2017 from the University of Canterbury Acoustic Research Unit, which identifies the noise is at disturbing levels from 4.30 am to 11 pm and that contributors include:
- the speed of traffic
 - the type of traffic, especially heavy and modified vehicles
 - the acceleration and deceleration of traffic - this is worse at traffic lights than roundabouts. As the University of Canterbury states, *"Some research indicates that traffic light controlled intersections result in more noise than roundabout controlled intersections due to interrupted flows and consequently higher levels of vehicles."*
- (c) the report from Carriageway Consulting Ltd, with traffic data and identifying that Glandovey West is not functioning as a collector road. It carries an unduly high load of through traffic. Part of the reason must be the removal of the roundabout and the traffic light suspended over the centre of the intersection, signaling green to straight ahead traffic through Glandovey West. It is unusual for the collector road route to have the most prominent signal. Straight ahead traffic, certainly commercial, increased since the lights were installed.
- (d) our presentation of August 2017 with photos.
- (e) the TDG report, which includes that the roundabout acted as a defacto impediment to heavy traffic. It outlines the many problems with the intersection, including it not meeting cycling, pedestrian and disability standards.
- (f) when the Council staff on 27 November 2017 acknowledged to the management committee that roundabout removal results in and resulted in more heavy traffic.
- (g) when the Council staff on 27 November 2017 advised that the roads are not intended to be cycled on by 10 year olds and younger, because they are unsafe for them.
- (h) from the Beca reports of the Council, which include its advice of the 5-10 year risk of a pedestrian death or serious injury from the footpath design, the footpath being too narrow for those with double prams, and the risks associated with narrow vehicles lanes and an exposed headwall, to name but a few.
- (i) the CDHB letter of 31 October 2017 to the effect the traffic is problematic.
- (j) the CDHB letter of 12 November 2017 confirming there was no health impact assessment of this freight route or intersection, or for the Strategic Transport Plan freight routes generally.
- (k) the SAM heritage material.

The Glandovey / Idris roads intersection is clearly problematic. Fixing many problems means that the number of vehicle lanes at the intersection needs to reduce to 8, one overhead traffic pole needs removal, two traffic poles need to be moved and the footpath needs to be widened at various points. Even then some noise and pollution issues will persist. Preventing the intersection from remaining a focus of the network, a problem identified by TDG, requires removal of the lights and traffic management changes.

At the meeting with Council on 27 November 2017 one member asked can we not just have the roundabout back? This is a common theme now that the effects of removal are known. The roundabout would not have been got rid of had all relevant information been put before the community. Had our concerns been taken seriously remedial works would have been done by now.

Roundabouts function well with appropriate traffic types and volumes. Examples include the Weka and Tui Streets roundabout and the Merivale Lane and Winchester Street roundabout.

The immediate point is significant money needs to be spent, urgently, to address all the problems, including by returning the intersection to a roundabout, and putting in proper cycle lanes, road calming and a high-quality streetscape that promotes pedestrian use and accommodates those with disability. This is consistent with the 2017 – 2019 Community Board plan, into which a representative had input.

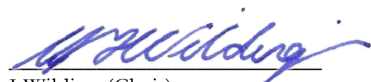
We, and we suspect or hope you, do not wish all the effort thus far to fail because of a lack of planning and funding. Please can the Board act now to ensure those are in place, for 2018. A completion date is necessary. For us, it is for the Board, Council and community to work swiftly so that by, say:

- (a) the beginning of the first school term of 2018 the Glandovey / Idris intersection is remarked with fewer vehicle lanes and a proper cyclelane on the Idris South exit (eastern side), with flexible barriers for the cycle lanes;
- (b) the end of the first school term of 2018, there are proper cycle lanes, parking, and pedestrian (including disability) friendly footpaths on the roads we have addressed, and narrowing at all entrances to Idris and Glandovey roads;
- (c) the end of the second school term of 2018 there are calming and beautification measures on the roads we have addressed. The community can help with planting;
- (d) the beginning of October 2018, the Idris / Glandovey intersection is a roundabout with a pretty streetscape, so that the heritage in the area can be showcased by the Board, Council and community for Beca Heritage week 2018.

By October 2018, the timeframe we have previously raised, with your support we can be in a similar position to, for example, Church Square, Addington, and be one of a number of communities helping to foster the types of changes and values our Garden City should be embracing. Infrastructure decisions such as those we seek will have benefits for generations to come. Let us not tinker, but instead make real change, swiftly, and return this to an area for future generations to cherish.

Finally, thank you again.

Yours faithfully



J Wilding (Chair)

For: Management committee
Glandovey, Idris and Straven Residents Association Incorporated



144 Sawyers Arms Rd,
Northcote,
Christchurch 8052
New Zealand
Tel: 03 352 4227
Mobile: 027 35 333 23
Email: papbapfreedom@gmail.com
Web: www.papbap.org.nz/freedom-trust



18th December 2017

Fendalton-Waimairi-Harewood Community Board
Fendalton Service Centre
PO Box 73020
Christchurch 8053

Dear Community Board Members,

On behalf of the Papanui Baptist Freedom Trust, I wish to gratefully acknowledge the excellent support and generosity of the Fendalton-Waimairi-Harewood Community Board and your staff team throughout 2017.

We are very appreciative of the funding for our community services work and programmes. We are especially thankful given the number of very worthy charities that sought assistance, and against a backdrop of a net decrease in the available funding.

To better target the needs of our community and ensure our resources are used to greatest effect, we have recently undertaken a major review and restructure of our Trust. In funding our community worker, your monies enable us to continue our wide range of programmes, community support services and collaborative work with other organisations.

We also want to acknowledge the considerable time and effort that community board members and staff spend supporting community organisations such as ourselves in an enormous variety of ways both directly and indirectly.

Thanking you for your encouragement and financial assistance.

Yours sincerely,

Don Jellyman

Chair, Papanui Baptist Freedom Trust

Item 7

Attachment C



14 December 2017

David Cartwright
Chairperson
Fendalton-Waimairi-Harewood Community Board *via email: david.cartwright@ccc.govt.nz*

Dear David

BISHOPDALE MALL REGENERATION PLAN

Thank you for your letter dated 22 November 2017 requesting the support of council staff and DCL in leading an integrated approach in progressing the regeneration of Bishopdale Mall. I apologise for the delay in responding.

I agree with the community board that the regeneration of the Bishopdale Mall is an important process to unlock and progress as soon as practicable. I am therefore supportive of the work of staff and DCL continuing. However you may wish to consider whether you are first developing a regeneration plan, in which case an early discussion with Regenerate Christchurch might also be of assistance.

It is important to note, however, that any planning does not necessarily commit funding to your project. Any financial commitment by council will need to follow the usual processes through relevant annual and long term plans.

Thank you for raising this issue with me.

Yours sincerely



Karleen Edwards
CHIEF EXECUTIVE

cc Rob Hall, CEO, Development Christchurch Ltd.

Civic Offices, 53 Hereford Street, Christchurch, 8011
PO Box 73016, Christchurch, 8154
Phone: 03 941 8554
www.ccc.govt.nz
TRIM17/1482106

8. Jet Place, Harewood - Land to be dedicated as Road

Reference: 17/1380752

Contact: Stuart McLeod stuart.mcleod@ccc.govt.nz 941 8520

1. Purpose and Origin of Report

Purpose of Report

- 1.1 The purpose of this report is for the Fendalton-Waimairi-Harewood Community Board to recommend to the Council that a Local Purpose Reserve (Road), namely Lot 19 DP 375764, is dedicated as road pursuant to Section 111 of the Reserves Act 1977.

Origin of Report

- 1.2 This report is staff generated in response to a request from the lessee of the adjoining property (the applicant) to declare 180 square meters, being Lot 19 DP 375764 contained in Computer Freehold Register 305065 (**Attachment A**) as road.

2. Significance

- 2.1 The decision in this report is of low significance in relation to the Christchurch City Council's Significance and Engagement Policy.
 - 2.1.1 The level of significance was determined by completing the Council template for recording significance assessments.
 - 2.1.2 The community engagement and consultation outlined in this report reflect the assessment.

3. Staff Recommendations

That the Fendalton-Waimairi-Harewood Community Board recommends that the Council:

1. Resolves to dedicate the Local Purpose Reserve (Road) more particularly described as Lot 19 DP 375764 as road, pursuant to Section 111 of the Reserves Act 1977.

4. Key Points

- 4.1 This report supports the [Council's Long Term Plan \(2015 - 2025\)](#):
 - 4.1.1 Activity: Road Operations
 - Level of Service: 10.0.6 Improve Road Safety: Reduce the number of reported crashes on the network
- 4.2 The following options have been considered:
 - Option 1 – Dedicate Lot 19 DP 375764 as road (preferred option)
 - Option 2 – Grant a right of way easement over the land
 - Option 3 – Do nothing.
- 4.3 Option Summary - Advantages and Disadvantages (Preferred Option)
 - 4.3.1 The advantages of this option include:
 - Land earmarked for future road becomes road.

- Dedicating land for road is a relatively simple process, there is specific provision in the Reserves Act 1977 to dedicate Local Purposed Reserve (Road) as road.
- Costs are being met by the applicant.
- The adjoining land owner (Environment Canterbury - Ecan) has consented to the land becoming road.
- Will go some way to alleviate vehicle movement conflict on the Brouchs Road to the north.
- Avoids the potential need to grant multiple easements.
- Is supportive of local business.

4.3.2 The disadvantages of this option include:

- None.

5. Background/Summary

Background

- 5.1 Lot 19 DP 375764 is located at the very end of Jet Place off Logistic Drive as shown in **Attachment B** of this report. All other adjoining land being owned by Environment Canterbury (Ecan). The Ecan land is held by them for the improvement and protection of the Waimakariri River and is zoned Industrial heavy.
- 5.2 Ecan subdivided its land in 2007 to allow for parts to be leased for industrial use in keeping with the zoning. As part of this subdivision Lot 19 DP 375764 vested in Council as Local Purpose Reserve (Road).
- 5.3 Section 111 of the Reserves Act 1977 provides a statutory process whereby Local Purpose Reserve (Road) can be dedicated as road by Council resolution.
- 5.4 Ecan lease the property immediately to the north to Niagara Sawmilling Limited who are looking to enhance their business operations and minimise vehicle conflicts on Brouchs Road by seeking alternative access on to Jet Place.
- 5.5 Present access to the Niagara land is via another Local Purpose Reserve (Road) known as Brouchs Road to the north, although this land has the appearance of road it is not a legal road and several vehicle accidents or near misses have occurred in this vicinity.
- 5.6 Brouchs Road cannot be dedicated as road until such time as NZTA have completed their final road design and works connecting McLeans Island Road with Sawyers Arms Road.

Summary

- 5.7 The practical options considered were to dedicate Lot 19 DP 375764 as road, grant a right of way easement and to do nothing, once the advantages and disadvantages of the options were considered it became obvious the most practical approach which is both cost efficient and reasonably quick to implement is to dedicate Lot 19 DP 375764 as road.

6. Option 1 – Dedicate Lot 19 DP 375764 as road (preferred)

Option Description

- 6.1 Section 111 of the Reserves Act 1977 provides a specific statutory mechanism to dedicate Local Purpose Reserve (Road) to be dedicate as road by Council resolution.

Significance

- 6.2 The level of significance of this option is low and consistent with section 2 of this report
- 6.3 There is no engagement requirement for this statutory process.

Impact on Mana Whenua

- 6.4 This option does not involve a significant decision in relation to ancestral land or a body of water or other elements of intrinsic value, therefore this decision does not specifically impact Ngāi Tahu, their culture and traditions.

Community Views and Preferences

- 6.5 Only the applicant is specifically affected by this option. Their view is Lot 19 DP 375764 should be dedicated as road.

Alignment with Council Plans and Policies

- 6.6 This option is Consistent with Council's Plans and Policies

Financial Implications

- 6.7 Cost of Implementation – None – the applicant is meeting all costs.
- 6.8 Maintenance / Ongoing Costs – Future maintenance.
- 6.9 Funding source – Roads and footpaths LTP Vol I page 136

Legal Implications

- 6.10 Section 111 provides a specific mechanism for Local Purpose Reserves (Road) to be dedicated as road by Council passing the appropriate resolution. An extract of the resolution is lodged at Land Information New Zealand and the title to the land is cancelled.

Risks and Mitigations

- 6.11 There is low risk in following this procedure.

Implementation

- 6.12 Implementation dependencies - Obtaining Council resolution
- 6.13 Implementation timeframe – 3 months

Option Summary - Advantages and Disadvantages

- 6.14 The advantages of this option include:
- Land earmarked for future road becomes road.
 - Dedicating land for road is a relatively simple process, there is specific provision in the Reserves Act 1977 to dedicate Local Purposed Reserve (Road) as road.
 - Costs are being met by the applicant.
 - The adjoining owner has consented to the land becoming road.
 - Will go some way to alleviate vehicle movement conflict on the Broughs Road.
 - Is supportive of local business.
 - Avoids the potential need to grant multiple easements.

6.15 The disadvantages of this option include:

- None.

7. Option 2 – Grant a right of way easement

Option Description

- 7.1 Section 48 of the Reserves Act 1977 provide for the grant of rights of way and other easements over reserves.

Significance

- 7.2 The level of significance of this option is low consistent with section 2 of this report.
- 7.3 Engagement requirements for this level of significance are medium because granting of rights of way easements over reserves is likely to required public consultation.

Impact on Mana Whenua

- 7.4 This option does not involve a significant decision in relation to ancestral land or a body of water or other elements of intrinsic value, therefore this decision does not specifically impact Ngāi Tahu, their culture and traditions.

Community Views and Preferences

- 7.5 The views of the wider community would only be sought is this option was adopted in which case the views of the wider public would be sought through a public consultation process.

Alignment with Council Plans and Policies

- 7.6 This option is consistent with Council's Plans and Policies.

Financial Implications

- 7.7 Cost of Implementation – None, the applicant would meet all costs.
- 7.8 Maintenance / Ongoing Costs – None, the applicant would be liable for the upkeep of the easement.
- 7.9 Funding source – none.

Legal Implications

- 7.10 The public consultation provisions in Section 119 and 120 of the Reserves Act 1977 would have to be followed.

Risks and Mitigations

- 7.11 There is a risk a low risk of objections being received.
- 7.11.1 If any objections were received then the Council would have to complete the process in the Reserves Act and assess the objection(s). There can only be one of two outcomes, either the objections are allowed in which case the process is at an end or the objections are dismissed in which case the process continues.

Implementation

- 7.12 Implementation dependencies - Compliance with the statutory requirements of the Reserves Act 1977.
- 7.13 Implementation timeframe – 1 year.

Option Summary - Advantages and Disadvantages

- 7.14 The advantages of this option include:
- The applicant would get access to Jet Place.

7.15 The disadvantages of this option include:

- Extended time frame.
- Survey costs.
- Increased legal costs.
- Hearing panel costs.
- Potential need to grant additional easements e.g. electricity, water.
- Does not achieve the best outcome – granting easements over a Local Purpose Reserve (Road) is not sensible when it could be dedicated as road.
- There could be a future application to dedicate the land as road meaning Council would have wasted resources granting easements.

8. Option 3 – Do nothing

Option Description

- 8.1 Doing nothing leaves the status quo.

Significance

- 8.2 The level of significance of this option is low consistent with section 2 of this report.
8.3 Engagement requirements for this level of significance are low.

Impact on Mana Whenua

- 8.4 This option does not involve a significant decision in relation to ancestral land or a body of water or other elements of intrinsic value, therefore this decision does not specifically impact Ngāi Tahu, their culture and traditions.

Community Views and Preferences

- 8.5 The applicant is specifically affected by this option because they would not gain access to Jet Place. The view non progression as a disappointment and anti-business.

Alignment with Council Plans and Policies

- 8.6 This option is inconsistent with Council's Plans and Policies:
- 8.6.1 Inconsistency – Economic Development LTP Vol I page 73 and Roads and Footpaths LTP Vol I page 136.
 - 8.6.2 Reason for inconsistency – Infrastructure does not support sustainable economic growth and increased vehicle operating costs.
 - 8.6.3 Amendment necessary – no.

Financial Implications

- 8.7 Cost of Implementation – staff time.
8.8 Maintenance / Ongoing Costs – none.
8.9 Funding source – none.

Legal Implications

- 8.10 None.

Risks and Mitigations

- 8.1 There is a risk no action will result in negative publicity.
- 8.1.1 Residual risk rating: Remains low.
 - 8.1.2 Explanation to applicant that Council is not obliged to dedicate land as road.

Implementation

- 8.2 Implementation dependencies - None.
8.3 Implementation timeframe – two months.

Option Summary - Advantages and Disadvantages

- 8.4 The advantages of this option include:
- Status quo maintained.

8.5 The disadvantages of this option include:

- Not supportive of local business.
- Further applications to dedicate Lot 19 DP 375764 as road could be received.
- People may illegally access adjoining site across Lot 19 DP 375764.

Attachments

No.	Title	Page
A ↓	304/5852 Attachment A	27
B ↓	304/5852 Attachment B	28

Confirmation of Statutory Compliance

Compliance with Statutory Decision-making Requirements (ss 76 - 81 Local Government Act 2002).

(a) This report contains:

- (i) sufficient information about all reasonably practicable options identified and assessed in terms of their advantages and disadvantages; and
- (ii) adequate consideration of the views and preferences of affected and interested persons bearing in mind any proposed or previous community engagement.

(b) The information reflects the level of significance of the matters covered by the report, as determined in accordance with the Council's significance and engagement policy.

Signatories

Author	Stuart McLeod - Property Consultant
Approved By	Angus Smith - Manager Property Consultancy Bruce Rendall - Head of Facilities, Property & Planning Richard Osborne - Head of Transport David Adamson - General Manager City Services

11/21/2017

Quickmap Title Details

QuickMap Title Details



Information last updated as at 13 Nov 2017

COMPUTER FREEHOLD REGISTER DERIVED FROM LAND INFORMATION NEW ZEALAND

Identifier 305065

Land Registration District Canterbury

Date Issued 09 July 2007

Prior References

CB32A/854

Type	Fee Simple
Area	180 square metres more or less
Legal Description	Lot 19 Deposited Plan 375764
Purpose	Local Purpose Reserve (Road)
Proprietors	Christchurch City Council

Subject to the Reserves Act 1977

The information provided on this report forms a guideline only. As a result, Custom Software Limited cannot and does not provide any warranties or assurances of any kind in relation to the accuracy of the information provided through this report, the Site and Service. Custom Software Limited will not be liable for any claims in relation to the content of this report, the site and this service.

<https://prover.co.nz/#>

1/1

Item 8
Attachment A





9. Fendalton-Waimairi-Harewood 2017-18 Discretionary Response Fund - Application - The Village Community Centre

Reference: 17/1471709

Contact: Maryanne Lomax maryanne.lomax@ccc.govt.nz

941-6730

1. Purpose and Origin of Report

Purpose of Report

- 1.1 The purpose of this report is for the Fendalton-Waimairi-Harewood Community Board to consider an application for funding from its 2017-18 Discretionary Response Fund from the organisation(s) listed below.

Funding Request Number	Organisation	Project Name	Amount Requested
00057396	The Village Community Centre	The Village Bryndwr Market	\$3,000

Origin of Report

- 1.2 This report is staff generated as a result of an application being received.

2. Significance

- 2.1 The decision(s) in this report is of low significance in relation to the Christchurch City Council's Significance and Engagement Policy.
- 2.1.1 The level of significance was determined by the number of people affected and/or with an interest.
- 2.1.2 Due to the assessment of low significance, no further community engagement and consultation is required.

1. Staff Recommendations

That the Fendalton-Waimairi-Harewood Community Board:

1. Approves a grant of \$2,500 from its 2017-18 Discretionary Response Fund to The Village Community Centre towards the establishment costs for a weekly community Market Day.

3. Key Points

- 3.1 At the time of writing, the balance of the Discretionary Response Fund is as detailed below.

Total Budget 2017/18	Granted To Date	Available for allocation	Balance If Staff Recommendation adopted
\$136,995	\$65,674	\$71,321	\$68,821

- 3.2 Based on the current Discretionary Response Fund criteria, the application listed above is eligible for funding.
- 3.3 The attached Decision Matrix provides detailed information for the application. This includes organisational details, project details, financial information and a staff assessment.

Attachments

No.	Title	Page
A ↓	Fendalton-Waimairi-Harewood 2017-18 DRF - The Village Community Centre Decision Matrix	33

Confirmation of Statutory Compliance

Compliance with Statutory Decision-making Requirements (ss 76 - 81 Local Government Act 2002).

(a) This report contains:

- (i) sufficient information about all reasonably practicable options identified and assessed in terms of their advantages and disadvantages; and
- (ii) adequate consideration of the views and preferences of affected and interested persons bearing in mind any proposed or previous community engagement.

(b) The information reflects the level of significance of the matters covered by the report, as determined in accordance with the Council's significance and engagement policy.

Signatories

Author	Maryanne Lomax - Community Development Advisor
Approved By	Matthew McLintock - Manager Community Governance, Fendalton-Waimairi-Harewood

2017/18 DRF FENDALTON-WAIMAIRI-HAREWOOD DECISION MATRIX

Priority Rating

One	Meets all eligibility criteria and contributes significantly to Funding Outcomes and Priorities. Highly recommended for funding.
Two	Meets all eligibility criteria and contributes to Funding Outcomes and Priorities. Recommended for funding.
Three	Meets all eligibility criteria and contributes to Funding Outcomes and Priorities but to a lesser extent than Priority 2 applications. Not recommended for funding.
Four	Meets all eligibility criteria and has minimum contribution to Funding Outcomes and Priorities / Insufficient information provided by applicant (in application and after request from Advisor) / Other funding sources more appropriate. Not recommended for funding.

00057396	Organisation Name	Project Name and Description	Total Cost	Contribution sought towards	Staff Recommendation	Priority
	The Village Community Centre	The Village Bryndwr Market This project is to establish a weekly community Market Day at The Village Community Centre. The idea is to re-purpose items across neighbourhoods with a particular focus on those struggling in the Bryndwr community. The local community would be brought together on Saturday mornings to shop and socialise.	\$ 3,500 \$ Requested \$ 3,000 (86% requested)	Equipment - \$2,500 (Moving storage container, shelving and tables) Advertising/signage - \$750	\$ 2,500 That the Fendalton-Waimairi-Harewood Community Board makes a grant of \$2,500 towards establishment costs for a weekly community Market Day.	2

Organisation Details Service Base: 365a Ilam Road, Bryndwr Legal Status: Other Established: 1/07/1997 Target groups: Older adults, families, migrants Annual Volunteer hours: 2500 Number of project participants: 750 Alignment with Council Strategies <ul style="list-style-type: none"> Strengthening Communities Strategy CCC Funding History 2017/18 - \$18,000 (Community Centre Operations and Community Worker) SCF 2016/17 - \$8,000 (Community/Family Worker) SCF 2016/17 - \$11,000 (Centre Operations) SCF 2015/16 - \$8,000 (Community/Family Worker) SCF 2015/16 - \$12,000 (Centre Operations) SCF	Other Sources of Funding (this project only) Funds on hand - \$500 Staff Assessment The aims of the Village Community Centre (formerly St Stephen's Community Centre) are to foster friendship and build community amongst the socio-economic and cultural diversity of the predominantly state housing area surrounding the Centre. Community Centre programmes are kept at a low cost to encourage local participation. The Village Community Centre has been in operation since 1997, providing groups and classes to the local community. The Village Community Centre recently held a successful Spring Garage Sale with goods donated by the community. They are now planning to run a weekly market, during school term time, extending the second-hand sales beyond the current pre-loved clothes shop and also creating a space for community conversations. They are seeking funding support from the Community Board towards the establishment costs which includes the cost of moving a storage container (which they currently have) and installing shelving to hold items for sale from week-to-week. They also need to purchase some foldaway display tables. A team lunch would be held after each Market Day as another form of connection, thus encouraging the volunteers as they engage in serving the community. The Market is focused around paying-it-forward and sustainability. Proceeds from the Market would be re-invested in Community Centre activities and projects in the community.
--	--

10. Fendalton-Waimairi-Harewood 2017-18 Discretionary Response Fund - Application - St Patrick's School Bryndwr After School Care Programme

Reference: 18/21226

Contact: Maryanne Lomax maryanne.lomax@ccc.govt.nz

941-6730

1. Purpose and Origin of Report

Purpose of Report

- 1.1 The purpose of this report is for the Fendalton-Waimairi-Harewood Community Board to consider an application for funding from its 2017-18 Discretionary Response Fund from the organisation(s) listed below.

Funding Request Number	Organisation	Project Name	Amount Requested
00057419	St Patrick's School Bryndwr After School Care Programme	St Patrick's After School Care Programme	\$20,000

Origin of Report

- 1.2 This report is staff generated as the result of an application being received.

2. Significance

- 2.1 The decision(s) in this report is of low significance in relation to the Christchurch City Council's Significance and Engagement Policy.
- 2.1.1 The level of significance was determined by the number of people affected and/or with an interest.
- 2.1.2 Due to the assessment of low significance, no further community engagement and consultation is required.

1. Staff Recommendations

That the Fendalton-Waimairi-Harewood Community Board:

- Declines the application for funding from the Fendalton-Waimairi-Harewood 2017-18 Discretionary Response Fund from St Patrick's School Bryndwr After School Care Programme towards wages for the programme supervisor.

3. Key Points

- 3.1 At the time of writing, the balance of the Discretionary Response Fund is as detailed below.

Total Budget 2017/18	Granted To Date	Available for allocation	Balance If Staff Recommendation adopted
\$136,995	\$65,674	\$71,321	\$71,321

- 3.2 Based on the current Discretionary Response Fund criteria, the application listed above is eligible for funding.

- 3.3 The attached Decision Matrix provides detailed information for the application. This includes organisational details, project details, financial information and a staff assessment.

Attachments

No.	Title	Page
A ↓	Fendalton-Waimairi-Harewood 2017-18 Discretionary Response Fund - St Patrick's School Bryndwr After School Care Programme Decision Matrix	37

Confirmation of Statutory Compliance

Compliance with Statutory Decision-making Requirements (ss 76 - 81 Local Government Act 2002).

(a) This report contains:

- (i) sufficient information about all reasonably practicable options identified and assessed in terms of their advantages and disadvantages; and
- (ii) adequate consideration of the views and preferences of affected and interested persons bearing in mind any proposed or previous community engagement.

(b) The information reflects the level of significance of the matters covered by the report, as determined in accordance with the Council's significance and engagement policy.

Signatories

Author	Maryanne Lomax - Community Development Advisor
Approved By	Matthew McLintock - Manager Community Governance, Fendalton-Waimairi-Harewood

2017/18 DRF FENDALTON-WAIMAIRI-HAREWOOD DECISION MATRIX

Priority Rating

One	Meets all eligibility criteria and contributes significantly to Funding Outcomes and Priorities. Highly recommended for funding.
Two	Meets all eligibility criteria and contributes to Funding Outcomes and Priorities. Recommended for funding.
Three	Meets all eligibility criteria and contributes to Funding Outcomes and Priorities but to a lesser extent than Priority 2 applications. Not recommended for funding.
Four	Meets all eligibility criteria and has minimum contribution to Funding Outcomes and Priorities / Insufficient information provided by applicant (in application and after request from Advisor) / Other funding sources more appropriate. Not recommended for funding.

00057419	Organisation Name St Patricks School Bryndwr After School Care Programme	Project Name and Description St Patricks After School Care Programme This request is to provide interim funding towards the wages of the programme supervisor to meet an operational shortfall.	Project Details Staff: 5 Volunteers: 8 Number of participants: 100 User fees: - \$15 per day (regular) - \$20 per day (casual) (Above fees are for one child - additional children are at a reduced cost)	Project Funding CCC funding history (this project only) None Other sources of funding (this project only) User fees - \$47,000 (approx. - based on previous year) Ministry of Social Development - \$7,300	Total Cost \$66,053	Amount Requested \$20,000 30% percentage requested Contribution sought towards: Supervisor wages - \$20,000	Staff Recommendation \$ 0 That the Fendalton-Waimairi-Harewood Community Board declines the application from St Patrick's School Bryndwr After School Care Programme towards wages for the programme supervisor.	Priority 4
----------	--	---	---	--	-------------------------------	---	--	-----------------------------

Organisation Details

Service Base:	57 Plynlimon Road, Bryndwr
Council Facility:	No
Legal Status:	Incorporated Society
Established:	1/02/1997
Staff – paid:	5
Staff – unpaid:	7
Target groups:	Children
Annual Volunteer hours:	200

Networks:	NZ OSCAR Network
Audited accounts:	30/06/2017

Organisation Description/Objectives:

The St Patricks After School Care Programme provides high quality care for children, allowing their parents to work within and contribute to the local community. The programme is supported by a committed team of volunteer parents and staff who have established a positive environment that directly assists approximately 40 children and their families.

CCC Funding History

No funding received since 2011

Alignment with Council Strategies and Board Objectives

- Strengthening Communities Strategy
- Children's Strategy

Alignment with Council Funding Outcomes

- Reduce or overcome barriers
- Provide community based programmes
- Community participation and awareness
- Support, develop and promote capacity

How much will the project do? (Measures)

- Any funding obtained will contribute to the wages of the programme supervisor (approx 20 hours per week) to enable the programme to continue to operate Monday-Friday afternoons 3-5.30pm throughout the school terms.

How will participants be better off?

- Children will receive high quality after school care on-site at school.
- Parents are able to contribute to the local economy by remaining in full time paid employment.
- Children with specific learning and behavioural needs are supported in a family-like environment.
- The school community will continue to benefit from the excellent service provided for students and their families.

Staff Assessment

This application is recommend as a Priority Four as it is not appropriate for Community Board funding to top-up a short-fall created by a decrease in central government funding.

The St Patrick's After School Care Programme is a not-for-profit organisation established to provide care and recreation for children aged 5 to 12 years old, allowing their parents to work within, and contribute to, the local economy.

The organisation is governed by a committee of volunteers and employs five staff who work for the programme during term time. They rely on user fees, grants and fundraising activities to keep the programme running. The programme is CYF and WINZ accredited.

The programme is operational during term time from Monday to Friday. The hours are 3.00pm-5:30pm. Most children are booked in for a regular day or days per week and casual bookings are also available.

There are currently 37 children enrolled with the programme. This includes permanent placements on the programmes plus casual placements that vary each day.

Recent decreases in their roll have resulted in subsequent funding decreases from the Ministry of Social Development and the programme operated at a deficit for the 2016/17 financial year. Cash reserves were used during this period to support operating costs and continue to be used for this purpose.

The group anticipates that this roll decrease is cyclical and therefore a short-term issue and have established a fundraising calendar to assist with the shortfall. However forecasts indicate their current financial situation is sustainable for a further 6-8 months of operating only, by which time their cash reserves will be depleted.

Their contract with the Ministry of Social Development is to be renegotiated in June 2018 and if attendance numbers have not increased by then, further decreases to funding may be possible.

They are therefore seeking funding in the interim for a contribution to the wages of their supervisor to enable continuation of the programme.

11. Fendalton-Waimairi-Harewood 2017-18 Youth Development Fund - Applications - Ella Jean MacDonald (Touch New Zealand National Tournament)

Reference: 18/9576

Contact: Lisa Gregory

lisa.gregory@ccc.govt.nz

941-6729

1. Purpose and Origin of Report

Purpose of Report

1. The purpose of this report is for the Fendalton-Waimairi-Harewood Community Board to consider an application received for the Board's 2017-18 Youth Development Fund.
2. There is currently \$3,550 remaining in this fund.

Origin of Report

3. This report is staff generated as the result of applications for funding being received.

2. Significance

1. The decision(s) in this report is of low significance in relation to the Christchurch City Council's Significance and Engagement Policy.
 - 2.1.1 The level of significance was determined by the number of people affected and/or with an interest.
 - 2.1.2 Due to the assessment of low significance, no further community engagement and consultation is required.

3. Staff Recommendations

That the Fendalton-Waimairi-Harewood Community Board:

1. Approves a grant of \$200 from its 2017-18 Youth Development Fund to Ella Jean MacDonald towards the costs of competing in the Touch New Zealand National Tournament in Auckland from 9 to 11 February 2018.

4. Applicant - Ella Jean MacDonald

1. Ella Jean MacDonald is a 14 year old student that lives in Merivale and has been selected to compete at the Touch New Zealand National Tournament in Auckland from 9 to 11 February 2018.
2. Ella is very active in both school and club sport and competes in touch, basketball, netball and athletics. In 2017 Ella achieved the overall Year 9 athletics award and the Year 9 high jump at her school. Ella feels the Auckland trip will benefit her confidence by improving her touch skills as she will be competing against the best in her age group.
3. Ella initially was only reserve for the tournament, but has very recently been called into the team, therefore has not had a lot of time for any fundraising. She did however assist with the teams sausage sizzle and will also be involved with the upcoming Coupland's pie sale and quiz night.

4. The cost for the trip is listed below:

EXPENSES	Cost (\$)
Transport	390
Accommodation	240
Food	130
Tournament fees	165
Uniform	155
Misc	195
Total	\$1,275

5. This is the first time that the applicant has applied for funding from the Board.

Attachments

There are no attachments for this report.

Confirmation of Statutory Compliance

Compliance with Statutory Decision-making Requirements (ss 76 - 81 Local Government Act 2002).

(a) This report contains:

- (i) sufficient information about all reasonably practicable options identified and assessed in terms of their advantages and disadvantages; and
- (ii) adequate consideration of the views and preferences of affected and interested persons bearing in mind any proposed or previous community engagement.

(b) The information reflects the level of significance of the matters covered by the report, as determined in accordance with the Council's significance and engagement policy.

Signatories

Author	Lisa Gregory - Community Recreation Advisor
Approved By	Matthew McLintock - Manager Community Governance, Fendalton-Waimairi-Harewood

12. Fendalton-Waimairi-Harewood Community Board Area Report - January 2018

Reference: 17/1463448

Contact: Matt McIntock matt.mcintock@ccc.govt.nz

941- 6728

1. Purpose of Report

The purpose of this report is to resource the Community Board to promote a pro-active partnership approach to decision-making between the Council and Community Boards working together to achieve the best outcomes for the city with decisions being made with a good understanding of community views.

2. Staff Recommendations

That the Fendalton-Waimairi-Harewood Community Board:

1. Receive the Fendalton-Waimairi-Harewood Community Board Area Report for January 2018.
2. Receive the minutes of the Fendalton-Waimairi-Harewood Community Board Recess Committee meeting on Monday, 15 January 2018, for record purposes.
3. Receive the information in the Coldstream Court memorandum and give consideration to the recommendations put forward by staff.

3. Community Board Activities and Forward Planning

3.1 Community Board Plan update against outcomes

- 3.1.1 The attached table (**Attachment A**) outlines the Board priorities and progress to date. This will be updated and presented to the Board as part of the monthly Area Report.

3.2 Fendalton-Waimairi-Harewood Community Board Recess Committee

- 3.2.1 At its 11 December 2017 meeting the Board resolved to establish a Recess Committee to cover the period following the Board's ordinary meeting on 11 December 2017 through until the Board resumed its normal business on 29 January 2018. The Recess Committee was authorised to exercise the delegated powers of the Board for that period and requested that where the delegation was applied it be reported back to the Board for record purposes.

The Board's Recess Committee was convened on Monday, 15 January 2018 to consider the granting of a licence to Phillip Neil Hanrahan and Victoria Rachel Hanrahan to operate a boat hire business on the Recreation Lake at the Groynes Regional Park.

The Board approved the granting of the lease and the minutes of the Recess Committee meeting are attached (**Attachment B**) for the Board to formally receive for record purposes.

3.3 Memos/Information/Advice to the Board

3.3.1 Coldstream Court Walkway

In response to a presentation during the Public Forum section of its 11 September 2017 meeting, the Board requested that staff investigate options for slowing users exiting the walkway into the Coldstream Court cul-de-sac, including the possibility of reinstating the staples, and that an information memorandum be provided back to the Board.

An information memorandum, including options that may address the concerns raised, is attached for the Board's consideration. (**Attachment C**)

3.3.2 **Mona Vale Gatehouse**

Council staff have been working with the Board on the development of an artists in residence programme for the recently restored Mona Vale Gate House. The Board asked that staff work with internationally renowned animator Antony Elworthy and his team to trial the artists in residence concept for the Gate House.

Mr Elworthy has returned to New Zealand to establish a world class stop motion animation studio in Christchurch and will be the Animation Director for the 'Kiri and Lou' Television Production in Christchurch.

Field Theory, the production company for the 'Kiri and Lou' television series, has entered into a rolling three by three month residential tenancy of the Mona Vale Gate House. All the artists are animators who are coming to Christchurch directly from their latest project working on the upcoming Wes Anderson feature film "Isle of Dogs".

Three internationally regarded animators, Rachel Larson (US), Bartek Prusiewics (US) and Rob Millard (UK) and their partners will be living in the house while working from the Ferrymead Animation Studio.

Staff from the Christchurch City Council's Community Arts Team will be liaising with the production crew regarding opportunities for community engagement while they are here in Christchurch.

3.2.3 **Avonhead Cemetery**

As part of its 2017-19 Board Plan, the Board asked that the expansion of the Avonhead Cemetery be investigated.

Council staff have carried out the investigation, but due to a number of factors including the land being above unconfined aquifers, the expansion of the cemetery is not considered feasible.

3.4 **The provision of strategic, technical and procedural advice to the Community Board**

3.3.1 The Board is continuing to receive strategic, technical and procedural advice mainly through an ongoing programme of Board seminars.

3.5 **Board area Consultations/Engagement/Submission opportunities**

3.5.1 **Alcohol Licences**

- McGeorge Wine Co & The Winemakers Wife, 245A Wairakei Rod, Bryndwr – Off licence renewal
- Gatherings, 2 Papanui Road, St Albans – New On-licence

3.6 **Requests for information from Board meeting on Newsline**

3.6.1 The Board is invited to consider topics from the meeting for the inclusion in Newsline.

3.7 **Significant Board matters of interest to raise at Council**

3.7.1 Board members are asked to indicate which matters they would like to be included in the Board's monthly report to Council.

4. Significant Community Issues, Events and Projects in the Board Area

4.1 Community Issues

A wide range of issues continued to be raised by residents with staff and elected members. These issues are actioned on an individual basis.

4.2 Community Pride Garden Awards 2018

Judging has begun for this year's Community Pride Garden Awards 2018 (13 and 29 January 2018), with Judges from the Christchurch Beautifying Association selecting award-winning gardens that are visible from the street. Judges take into account effort, overall tidiness and impact of the garden on the street. There is no competition and all gardens meeting the standard are awarded a certificate. Judges put a notification card in award winner's letterboxes and they have until 2 February 2018 to return their filled out card to us. Certificates and trophies will be presented in March at the Fendalton-Waimairi-Harewood Community Board award ceremony.

4.3 Events Report Back

4.3.1 Christchurch City Council's Youth Pool Party 2017

We could not have hoped for better weather for the Youth Pool Party on Friday 8 December 2017 at Jellie Park. Two hundred and sixty local youth thoroughly enjoyed the night organised by Council staff working alongside key youth organisations and their leaders. The event was hi-lighted by the 'best' bomb competition and free Hellers sausages that were all devoured (thanks Hellers!)

A big thank you to all the local CCC staff, Jellie Park staff and youth workers who assisted and to the Fendalton-Waimairi-Harewood and Papanui-Innes Community Boards for supporting such a great event.



4.3.2 Fendalton Walking Group

A great end of year wrap up for the Fendalton Walking group which has now grown to 50 members. Present was the longest serving member of the group, Pat Williams, who has been with the group since day one 17 years ago.

Pat says being part of the group helps keep her active and provides valuable social contact. "The Walk'n'Talk group has grown in popularity over the years," Pat says, "and now there are close to 50 people turning up for a brisk stroll around the neighbourhood on a Thursday morning."



4.3.3 Christmas Carols @ the Park

On Sunday, 17 December 2017 local residents took their camp chairs and picnics to Crosbie Park in Avonhead, to enjoy Christmas carols, camaraderie and the feature for this year's event, Elgregoe, a well-known Christchurch magician and entertainer.

This small scale event which is organised by volunteers from the five local churches, is in its second year, and although the clouds gathered overhead, the evening stayed dry for the over 250 people, who attended.



4.4 Infrastructure projects underway

Project	Estimated End Date
Scheduled Road Work: Russley Road, Harewood	28 February 2018
Scheduled Road Work: Russley Road	30 April 2018
Road Closure: Russley Road (SH1)/Memorial Ave, Harewood	12 February 2018
Scheduled Road Work: Wairakei Road, Harewood	30 April 2018
Scheduled Road Work: Russley Road and surrounding area	11 March 2018
Johns Road	
Scheduled Road Work: Johns Road from Sawyers Arms Road to the Groynes	28 February 2018
Other	
Scheduled Road Work: The Groynes, Northwood	28 February 2018
Scheduled Road Work: Claridges Road	1 April 2018
Scheduled Road Work: Christchurch Northern Motorway, Main North Road and Chaney's On ramp	29 June 2018

4.5 Jeffreys Reserve Replacement Water Tank

Staff are working through the information received through the Community Feedback process. A report will be presented back to the Board in due course.

5. Community Board funding budget overview and clarification

5.1 For Board Funding 2017-18 details see **Attachment D**.

Attachments

No.	Title	Page
A ↓	Fendalton-Waimairi-Harewood Community Board Plan 2017-19 Monitoring - January 2018	47
B ↓	Fendalton-Waimairi-Harewood Community Board Recess Committee 15 January 2018 - Minutes	53
C ↓	Memorandum - Coldstream Court Walkway	56
D ↓	Board Funding	66

Signatories

Authors	Margaret Henderson - Community Board Advisor Maryanne Lomax - Community Development Advisor Kay Rabe - Governance Support Officer Bronwyn Frost - Community Support Officer Lisa Gregory - Community Recreation Advisor
Approved By	Gary Watson - Manager Community Governance, Halswell-Hornby-Riccarton Lester Wolfreys - Head of Community Support, Governance and Partnerships

Item 12

**FENDALTON-WAIMAIRI-HAREWOOD COMMUNITY BOARD PLAN
OUTCOMES AND PRIORITIES FOR 2017-19 - MONITORING**

Board Priorities	Success Measures	Progress
Strong Communities		
1. Strengthen community connectedness by supporting and promoting activities and programmes provided by local community organisations.	➤ At least 50 community projects or initiatives will receive Community Board funding and project advice where required. At least 40% of Community Board funding will be targeted at projects that support and develop young people in the Fendalton-Waimairi-Harewood area.	<p><u>21 September 2017</u> At their meeting on 11 September 2017, the Community Board approved funding to 44 community organisations through their 2017/18 Strengthening Communities Fund. 47% of the projects funded were targeted towards children and youth.</p> <p><u>31 October 2017</u> In the past month, the Board has funded two community groups through their Discretionary Response Fund and 15 young people through their Youth Development Fund.</p> <p><u>30 November 2017</u> In the past month, the Board has funded three community groups through their Discretionary Response Fund and four young people through their Youth Development Fund.</p> <p><u>29 January 2018</u> During December 2017, the Board provided funding to 17 young people through their Youth Development Fund.</p>
2. Support a range of services that support at-risk young people and their families, particularly in the Bryndwr community.	➤ Work in partnership with Bryndwr community organisations to provide a wrap-around service for vulnerable young people in their community.	<p><u>21 September 2017</u> The Community Board has provided three year funding to St Aidan's Church in Bryndwr to deliver a range of services to young people in the Bryndwr community. This funding includes the employment of two youth workers to work alongside local youth to provide mentoring and support, along with developing local young leaders.</p> <p>The funding also includes the employment of two 24/7 Youth Workers at Cobham Intermediate School.</p>

HPRM: 17/1039126

Board Priorities	Success Measures	Progress
3. Investigate the options for expansion of the Avonhead Cemetery.	➤ Advice will have been received by Council staff regarding the feasibility of the expansion of the Avonhead Cemetery. If deemed to be feasible, the Board will advocate for this to be included in the Council's Long Term Plan.	<p><u>30 November 2017</u> Staff have been requested to provide a memo to the Board on the feasibility of the cemetery expansion.</p> <p><u>29 January 2018</u> Council staff have carried out the investigation, but due to a number of factors including the land being above unconfined aquifers, the expansion of the cemetery into the adjacent land, is not considered viable.</p>
4. Utilisation of the Mona Vale Gatehouse for the purpose of an Artist in Residence programme.	➤ An Artist in Residence programme will be in place by January 2018.	<p><u>21 September 2017</u> Staff will be having a seminar with the Board on 2 October 2017 to update the Board on progress.</p> <p><u>31 October 2017</u> Seminar was held with the Board. Staff are investigating further options.</p> <p><u>29 January 2018</u> Field Theory, the production company for the 'Kiri and Lou' television series, has entered into a rolling 3x3 month residential tenancy of the Mona Vale Gate House. All the artists are animators who are coming to Christchurch directly from their latest project working on the upcoming Wes Anderson feature film "Isle of Dogs".</p>
Liveable City		
1. Work alongside Council traffic engineers to develop solutions to assist with the reduction in traffic congestion.	➤ All traffic congestion issues brought to the Board's attention are investigated and responded to in a timely manner. There will be a decrease in the number of complaints received regarding traffic in the Fendalton-Waimairi-Harewood area.	<p><u>21 September 2017</u></p> <p>➤ Local resident expressed concern regarding the speed of heavy trucks along Sawyers Arms Road which is causing constant shaking of properties. Council Traffic Engineer has met with the resident on site and has identified a number</p>

HPRM: 17/1039126

Board Priorities	Success Measures	Progress
		<p>of actions to be taken. Resident happy with the outcome and staff will continue to monitor this area as required.</p> <ul style="list-style-type: none"> ➤ Local resident in Tonbridge Street, Merivale, expressed concern regarding a number of issues including parking, traffic and campervans. Council Traffic Engineer has met with the resident on site and noticed that the majority of P120 signs are missing from the street. A request has been sent through to have these reinstated. Resident was given advice about some of the other issues and is happy with the outcome. Staff will continue to monitor. <p><u>31 October 2017</u></p> <p>Staff are continuing to respond to traffic issues as they arise.</p> <ul style="list-style-type: none"> ➤ Tonbridge Street plan is currently out for feedback from effected residents. Feedback closes 5 November 2017. ➤ University Parking Plan Review (Area 1) is also out for community feedback. Feedback closes 10 November 2017. <p><u>30 November 2017</u></p> <ul style="list-style-type: none"> ➤ Approved installation of Pedestrian Safety Refuge at Gardiners Road. ➤ Approved installation of pedestrian refuge, stopping and parking restrictions and a bus stop in Cavendish Road (outside Somerset Retirement Village site). ➤ Approved short-term parking restrictions including two disability parks outside Bishopdale Library and Community Centre.
2. Installation of traffic lights at the Harewood/Breens Road intersection.	<ul style="list-style-type: none"> ➤ Traffic lights at the Harewood/Breens Road intersection are included in the Council's Long Term Plan and the Board will continue to advocate for this project to be considered a priority. 	<p><u>21 September 2017</u></p> <p>The Board has signalled to Council that they will be including this project in their requests for the Long Term Plan.</p>

HPRM: 17/1039126

Board Priorities	Success Measures	Progress
3. Look to create more dog parks of the addition of fenced-off 'dog friendly' areas in local parks.	➤ At least two parks in the Fendalton-Waimairi-Harewood area have 'dog friendly' spaces established.	
4. Continue to advocate for improved bus routes throughout the Community Board area, in particular Bishopdale.	➤ Ensure that Environment Canterbury recognise the Community Board as a key stakeholder in terms of their transport network planning in the Fendalton-Waimairi-Harewood area.	
5. Undertake initiatives to promote cycling, including the continuation of the Jellie Park Cycling Incentive Scheme and investigate options for incentive schemes for other Council facilities e.g. libraries and Service Centres.	➤ Re-establish and promote the Jellie Park cycling incentive scheme and work with Council staff to explore options to expand the initiative to other Council facilities.	<u>30 November 2017</u> There has been a short delay in starting up the scheme due to the marketing material not being finished. The scheme will be extended to compensate for this delay. The scheme is also now running over the summer at Graham Condon and Pioneer recreation centres.
Healthy Environment		
1. Improve water quality in the Community Board area and ensure water quality monitoring is being undertaken.	➤ The Board will work in partnership with Environment Canterbury to improve water quality and ensure regular monitoring is being undertaken and reported back on.	
2. Waimairi Stream water-bore and Jeffreys Reserve pump station replacement.	➤ The Waimairi Stream water-bore and Jeffreys Reserve pump station will be replaced.	<u>21 September 2017</u> The Board had a seminar with staff regarding the Jeffreys Reserve pump station on 7 August 2017. Project due to be completed by June 2018. Staff will be notifying local residents and park users. A detailed plan will be presented to the Board over the coming weeks. <u>31 October 2017</u> Feedback from local residents is currently being analysed. A report for final approval will be coming back to the Board.

HPRM: 17/1039126

Board Priorities	Success Measures	Progress
3. Installation of exercise equipment in local parks.	➤ The Board will work with the Council's Recreation Planners to identify a suitable park location and install exercise equipment.	<u>21 September 2017</u> The installation of exercise equipment at Burnside Park is now completed, with an official opening on 30 th September 2017. The equipment is part of a four stage Fitness Trail and includes a sit-up bench, push up bars, stairs, vertical ladder, chin-up bar, shoulder wheel, cross trainer and more.
4. Work in partnership with the local community to undertake projects and initiatives to support the quality and enhancement of local waterways, including clean-up of Otukaikino Stream (Clearwater).	➤ In partnership with Environment Canterbury, at least two community 'stream clean-up' events will be held in the Fendalton-Waimairi-Harewood area.	
Prosperous Economy		
1. Work in partnership with Council, Development Christchurch Ltd and local businesses to undertake regeneration activities at Bishopdale Mall.	➤ At least three projects will be developed to assist with the regeneration of Bishopdale Mall. These may include: <ul style="list-style-type: none"> - new public toilets included in the Council's Long Term Plan - development of the old library and community centre site - scoping exercise for a 'Master Plan' for Bishopdale Mall 	<u>21 September 2017</u> Council staff and DCL have recently met with the Bishopdale Centre Association to progress this project. <u>31 October 2017</u> Staff are currently working on a letter to the Chief Executive to formally request approval for DCL and appropriate Council staff to undertake work on this project. <u>29 January 2018</u> The Board has received a letter from the Chief Executive (attached as correspondence to the 29 January 2018). Permission has been given for Council staff and DCL to work on the regeneration of the mall area.

HPRM: 17/1039126

Board Priorities	Success Measures	Progress
2. Host 'community conversations' with local small business operators to hear their issues/concerns.	➤ Three 'community conversations' will be held with the local business community.	<u>31 October 2017</u> Staff have created a list of small retail businesses throughout the Board area. Currently working on a survey to these businesses to ascertain interest in participating in a 'community conversation'.
3. Work with Council staff to ensure social enterprises are included in the Council's procurement procedures.	➤ Social enterprises are included in the Council's procurement procedures.	<u>31 October 2017</u> Staff are in discussions with the Procurement Team to further this priority.
4. Work in partnership with local Business Associations to investigate a possible 'Buy Local' campaign.	➤ Meetings will be held with local business associations to explore the 'Buy Local' campaign concept.	

HPRM: 17/1039126



**Fendalton-Waimairi-Harewood Community Board
Recess Committee
OPEN MINUTES**

Date: Monday 15 January 2018
Time: 4.30pm
Venue: Boardroom, Fendalton Service Centre,
Corner Jeffreys and Clyde Roads, Fendalton

Present
Members David Cartwright
Aaron Campbell
Aaron Keown

In Attendance Shirish Paranjape

15 January 2018

Matthew McLintock
Manager Community Governance, Fendalton-Waimairi-Harewood
941 6231
matthew.mclintock@ccc.govt.nz
www.ccc.govt.nz

To view copies of Agendas and Minutes, visit:
www.ccc.govt.nz/Council/meetingminutes/agendas/index

Fendalton-Waimairi-Harewood Community Board Recess Committee
15 January 2018



- Part A **Matters Requiring a Council Decision**
Part B **Reports for Information**
Part C **Decisions Under Delegation**
-

The agenda was dealt with in the following order.

1. Election of Chairperson

Part C

Community Board Resolved FWRC/2018/00001

It was resolved that David Cartwright be appointed Chairperson of the Fendalton-Waimairi-Harewood Community Board Recess Committee.

Aaron Campbell/Aaron Keown

Carried

2. Apologies

Part C

There were no apologies.

3. Declarations of Interest

Part B

There were no declarations of interest recorded.

4. Deputations by Appointment

Part B

4.1 There were no Deputations.

5. The Groynes - Licence for Boat Hire

Community Board Resolved FWRC/2018/00002 (Original Staff Recommendation adopted without change)

Part C

The Fendalton-Waimairi-Harewood Community Board Recess Committee resolved to:

1. Acknowledge that:

- 1.1 The future of the Council's lease of the Groynes Regional Park ("Park") from the Canterbury Regional Council is yet to be finalised and currently continues on a month to month basis; and

Fendalton-Waimairi-Harewood Community Board Recess Committee
15 January 2018



1.2 Council staff are currently preparing a draft management plan for the Park for public consultation and formal adoption by the Council at some future date; and

1.3 In order to comply with the Council's Leasing Policy and Procurement Policy, the granting of leases and licences to commercial operators in the Park will be required to be subject to a public tender or "request for proposals" process; and

As an interim measure:

1.4 Approve the granting of a licence to Phillip Neil Hanrahan and Victoria Rachel Hanrahan (the "Hanrahans") to operate a pleasure boat hire business at the Groynes Regional Park for a term determinable by either party on one month's written notice, under terms and conditions as generally outlined in this report; and

1.5 Delegate to the Property Consultancy Manager, the authority to negotiate and agree and to enter into such legal documentation with the Hanrahans as he shall in his discretion determine is reasonable or necessary to implement the terms of (1.4) and to give the notice cancelling such licence granted to the Hanrahans or the then licensee if such is required at any time in the future.

Aaron Campbell/Aaron Keown

Carried

Meeting concluded at 4.42pm.

CONFIRMED THIS 17TH DAY OF JANUARY 2018

DAVID CARTWRIGHT
CHAIRPERSON

**Christchurch City Council
City Services Group**

Memorandum

Date: 4th December 2017

From: **Michael Ferigo** – Sustainable Transport Planning Walking and Cycling

To: FENDALTON-WAIMAIRI-HAREWOOD COMMUNITY BOARD

Cc: **Margaret Henderson** – Community Board Adviser (for distribution)
Matt McLintock – Manager Community Governance (FWH)
Richard Holland – Team Leader Asset Planning Transport

Attachments:

**COLDSTREAM COURT / BARLOW STREET ACCESSWAY
REVIEW**

Purpose of this Memo:

The purpose of this memo is to respond to the Fendalton-Waimairi-Harewood Community Board's request on the 11th September 2017 for information reviewing the safe use of the Coldstream Court access way.

Background:

In response to a presentation from Marene Hunter – a resident living adjacent to the access way Fendalton/Waimairi/Harewood Community Board resolved to "request staff to investigate calming measures for slowing access way users exiting into the Coldstream Court Cul-de-sac and report back.

Information requested: (Refer to images of the access way below.)

Transport Asset Planning Unit □ Civic Offices □ 53 Hereford Street □ PO Box 73014 □ Christchurch 8154
Michael Ferigo 941 8925

- 2 -

In January 2017 some upgrades were made to the access way which included removing the existing 'staple metal barriers' and replacing them with several bollards.

As an approach the Councils practice over the past decade or two has been to look to reverse the previous approach of putting up multiple barriers that barricade alleyways from the possibility of illegal motorcycle usage. This traditional approach had the unwanted effect of making access for a whole range of legitimate users more difficult such as people pushing prams and in many situations impossible. People in wheel chairs and the increasing number of people using mobility scooters both need adequate free path width to manoeuvre past barriers.

Following the January 2017 upgrade to the access way the two neighbouring residents, who previously had concerns around illegal motorcycle use and the speed of cyclists exiting into Coldstream Court, have expressed concerns to the Community Board.

I met with one of the neighbours Hamish Martin of 15 Coldstream Court shortly after he contacted us complaining about the upgrade. Mr Martin was concerned around the speed of cyclists exiting and particularly for his children's safety if they were in front of his driveway when a fast cyclist or motorcyclist exited.

After discussion and re-consideration of the factors present I arranged for a white centre line to be painted through the access way's approaches to the blind bend to remind users of the lack of inter-visibility. I also arranged for the installation of a kerb cut down directly opposite the access way onto Coldstream Court. The cut down allows cyclists to now link directly to the Cul-de-sac rather than have to use the neighbouring driveway cut downs thus less likely to collide with exiting motor vehicles or children in front of the neighbouring driveways as both fences block visibility.

In addition I contacted the local police and Sergeant Lachy Garrick wrote back advising he was contacting Mr Martin with a view of targeting the 5 to 7pm University term time motorcycle usage.

Subsequent to both these upgrades the neighbouring residents Marene and Tony Hunter from 20 Coldstream Court presented their heightened concerns to the Community Board's 11th September Meeting.

Mr Martin has recently written in to the Council to describe an accident he witnessed between two young cyclists at the access way and Cul-de-sac area and asks that the staple barriers be restored at this point.

These issues are not present at the opposite entrance exit primarily because the exit / entrance at Barlow Street has an open layout where all users have good visibility of each other and can adjust their speed and behaviours to compensate for the other users.

Several options are identified that may address the concerns and or improve the function of the access way for the community:

Transport Asset Planning Unit □ Civic Offices □ 53 Hereford Street □ PO Box 73014 □ Christchurch 8154

Michael Ferigo 941 8925

- 3 -

1. Retain the current situation.
2. Pavement messaging to remind users to slow near the poor visibility locations may include graphics representing children pedestrians present supported by the introduction of a limit line at Coldstream Court access way intersection with the footpath.
3. Introduce one 'fence' style barrier (non-open staple type, per photo A example), off-set to the exiting bollard to slow faster users but also allow a minimum 1.2m operative path width for all legitimate users to be able to manoeuvre past the obstacles (Photo A).
4. Investigate the process to reducing the height of the two adjacent property boundary fences to allow improved visibility between people nearing the northern terminal of the access way.

Discussion

There is a need to balance the concerns raised by the two adjacent neighbours around how they have seen the access way sometimes used alongside the need to not impede reasonable access for all the legitimate users and the desire to encourage all legitimate users to have easy access i.e. encourage active transport options.

When placing an obstacle such as a bollard or staple in the way of any pathway it introduces a potential collision for pathway users. Hence the introduction of or retention of pathway obstacles should always be considered judiciously. This includes ensuring there is a comparatively significant problem, that it treats the problem and doesn't create a more significant issue than the problem represents.

Traditionally the standard approach to all alleyway entrances was that they be barricaded against illegal use. This approach stopped motorists from misusing them but it rarely succeeded in stopping motorcyclists but un-intendedly it successfully frustrated access for many legitimate users such as people with movement disabilities, prams etc. and in some cases caught out people by causing collision accidents.

Many of the older double staple barriers have been removed to open up access ways in line with current Council practice, as the value of equity of access and healthy transport options are more recognised.

Generally to stop all motorcyclists entering access ways the range of barriers have to be very severe to the effect that many members of the community would not be able to gain entry such as in their wheelchairs, mobility scooters, pushing prams or riding tandems and cargo bikes.

The existing layout at Coldstream Court access way is within the current level of 'normal' for a relatively busy and popular link in the active transport network. The bollards at each entrance allows uninterrupted movement to all legitimate users, whilst the 1.5m operational clear width provides a visual narrowing cue to slow for most people whilst not allowing any motor vehicle passage. The centre line pavement marking reminds people approaching the blind bend mid-way through the access way to slow down and stay on their side of the 2m wide path.

Transport Asset Planning Unit □ Civic Offices □ 53 Hereford Street □ PO Box 73014 □ Christchurch 8154

Michael Ferigo 941 8925

- 4 -

I recommend in response to the continuing concerns express that several pavement messages are painted to remind users of the possible sudden presence of other pathway users. Also to delineate the footpath at the end of the northern section of the access way – highlighting the access way user is about to cross a ‘blind’ footpath.

These suggested additions will re enforce the shared nature of the path and the need to moderate behaviours.

A further measure that can improve the function and safety around the northern end of the access way is by improving the visibility of all users on the access way, footpath and driveway by lowering the two boundary fences. Currently the two boundary fences alongside the northern terminal of the access way stop people seeing each other in advance. If these two fences were lowered or were constructed to be more visually permeable to result in an adequate visibility splay, all people (using driveways, access way and footpath) would be more likely to moderate their speeds and better interact to suit the actual conditions thereby lowering the risk potential.

There may be some moderate costs associated with improving the fences and the need to gain an agreement between parties.

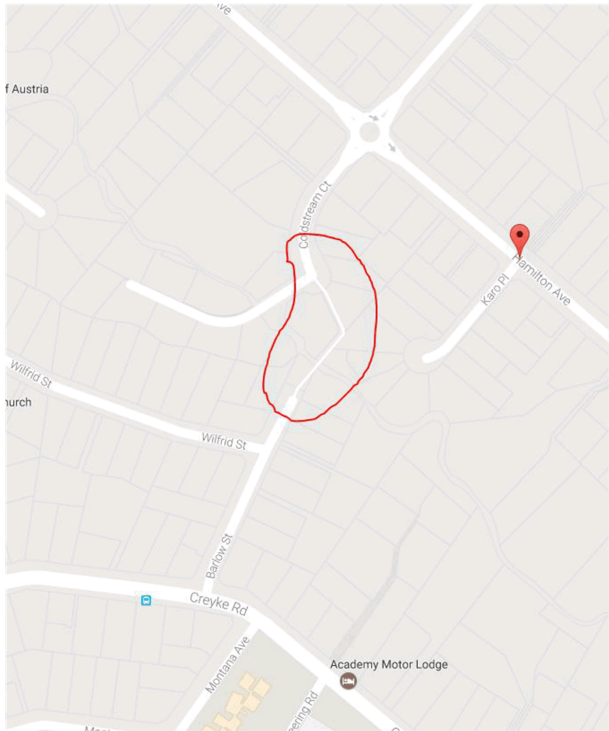
Conclusion:

The current layout of the access way provides a good balance for the large majority of users allowing reasonable assess for the community .However in looking to respond to the concerns held by several neighbouring residents further work is recommended to further increase the safety of the access way.

Recommendation:

Both option two and option four are recommended, although either option will help to keep lowering the risks option four is considered to provide more gains for safety than option 2.

- 5 -



Location of Coldstream Court – Barlow Street access way (note University of Canterbury in close proximity increasing popularity of use)

- 6 -



- 1) **Early January 2017** the northern end Coldstream Court entrance (top) and the southern entrance (above) the wooden bollards had just be installed.

Transport Asset Planning Unit □ Civic Offices □ 53 Hereford Street □ PO Box 73014 □ Christchurch 8154

Michael Ferigo 941 8925



- 7 -



Current layout of Northern end of access way (top) and mid-section (above).

Transport Asset Planning Unit □ Civic Offices □ 53 Hereford Street □ PO Box 73014 □ Christchurch 8154

Michael Ferigo 941 8925

- 8 -



Current layout of southern entrance of access way (above)

Transport Asset Planning Unit □ Civic Offices □ 53 Hereford Street □ PO Box 73014 □ Christchurch 8154

Michael Ferigo 941 8925

- 9 -



Photo A.) Example of a 'filled' staple barrier (less chance of users colliding with these than the traditional staple units)

Transport Asset Planning Unit □ Civic Offices □ 53 Hereford Street □ PO Box 73014 □ Christchurch 8154

Michael Ferigo 941 8925

- 10 -

Approval:

Name	Position	Signature	Date
Richard Holland	Team leader Asset Planning Transport		6 December 20017

Transport Asset Planning Unit ☐ Civic Offices ☐ 53 Hereford Street ☐ PO Box 73014 ☐ Christchurch 8154

Michael Ferigo 941 8925

[illegible]

13. Elected Members' Information Exchange

This item provides an opportunity for Board Members to update each other on recent events and/or issues of relevance and interest to the Board.