

Coastal-Burwood Community Board AGENDA

Notice of Meeting:

An ordinary meeting of the Coastal-Burwood Community Board will be held on:

Date: Monday 20 March 2017
Time: 9am
Venue: Boardroom, Corner Beresford and Union Streets,
New Brighton

Membership

Chairperson	Kim Money
Deputy Chairperson	Tim Sintes
Members	Tim Baker
	David East
	Glenn Livingstone
	Linda Stewart

14 March 2017

Jo Wells
Manager Community Governance, Coastal-Burwood
941 6451
Jo.Wells@ccc.govt.nz
www.ccc.govt.nz

Note: The reports contained within this agenda are for consideration and should not be construed as Council policy unless and until adopted.
If you require further information relating to any reports, please contact the person named on the report.

To view copies of Agendas and Minutes, visit:
<https://www.ccc.govt.nz/the-council/meetings-agendas-and-minutes/>

Part A	Matters Requiring a Council Decision
Part B	Reports for Information
Part C	Decisions Under Delegation

TABLE OF CONTENTS

C	1.	Apologies.....	4
B	2.	Declarations of Interest.....	4
C	3.	Confirmation of Previous Minutes	4
B	4.	Deputations by Appointment.....	4
B	5.	Presentation of Petitions	4
C	6.	Staff Briefings	11

STAFF REPORTS

C	7.	Horseshoe Lake Reserve Earthquake Repairs.....	13
C	8.	Coastal-Burwood Community Board Youth Development Fund 2016-17 - Timothy Carey, Reece Falck, Megan van Grinsven and O'Shay Rayner	53
C	9.	Coastal-Burwood Community Board Youth Development Fund 2016/17 - Te Waipounamu Maori Netball U19 Team.....	57
C	10.	Coastal-Burwood Community Board Area Report.....	61
B	11.	Elected Member Information Exchange	71
B	12.	Question Under Standing Orders	71

1. Apologies

At the close of the agenda no apologies had been received.

2. Declarations of Interest

Members are reminded of the need to be vigilant and to stand aside from decision making when a conflict arises between their role as an elected representative and any private or other external interest they might have.

3. Confirmation of Previous Minutes

That the minutes of the Coastal-Burwood Community Board meeting held on [Monday, 6 March 2017](#) be confirmed (refer page 5).

4. Deputations by Appointment

4.1 Southshore Residents Association

Representatives of the Southshore Residents Association will update the Board of progress regarding flood protection for Southshore.

4.2 South Brighton Surf Lifesaving Club

Nigel Cox, Chair of the South Brighton Surf Lifesaving Club will provide information on the Club's rebuild plans.

5. Presentation of Petitions

There were no petitions received at the time the agenda was prepared.

Coastal-Burwood Community Board OPEN MINUTES

Date: Monday 6 March 2017
Time: 4.30pm
Venue: Boardroom, Corner Beresford and Union Streets,
New Brighton

Present

Chairperson	Kim Money
Deputy Chairperson	Tim Sintes
Members	Tim Baker
	David East
	Glenn Livingstone
	Linda Stewart

6 March 2017

Jo Wells
Manager Community Governance, Coastal-Burwood
941 6451
Jo.Wells@ccc.govt.nz
www.ccc.govt.nz

-
- Part A** **Matters Requiring a Council Decision**
Part B **Reports for Information**
Part C **Decisions Under Delegation**
-

The agenda was dealt with in the following order.

1. Apologies

Community Board Resolved CBCB/2017/00048

Part C

That the apology for lateness received from Tim Baker be accepted.

Linda Stewart/Tim Sintes

Carried

2. Declarations of Interest

Part B

There were no declarations of interest recorded.

3. Confirmation of Previous Minutes

Part C

Community Board Resolved CBCB/2017/00049

Community Board Decision

That the minutes, both open and closed, of the Coastal-Burwood Community Board meeting held on Monday, 20 February 2017 be confirmed.

Glenn Livingstone/David East

Carried

4. Deputations by Appointment

Part B

There were no deputations by appointment.

5. Presentation of Petitions

Part B

There was no presentation of petitions.

6. Staff Briefings

The briefing update regarding the water pressure reduction trial in the Rawhiti water supply zone was deferred; the update to be presented to a future seminar.

7. Fairway Reserve Basketball Court - Noise Complaint

Board Comment

The Board acknowledged the attendance of Linda Callaghan at the meeting, the resident who has raised the noise complaint issue at Fairway Reserve Basketball Court. The Board offered their apologies to Ms Callaghan that the proposed solution of a sound proof fence had not been followed through. They noted that they supported staffs reason for not proceeding with the sound proof fence; after further investigation was carried out about the proposed solution, it was found to pose a risk of increased noise by way of people bouncing balls off the fence.

Linda Callaghan was invited to the table to answer questions from the Board in regards to this matter.

Linda Callaghan advised that approaches to noise control and the police on occasions of late night use of the courts had been unsuccessful. Her house had been built in 1992 prior to the establishment of the Fairway subdivision and the park. The noise issue from the Basketball court has occurred for a few years.

Staff Recommendations

That the Coastal-Burwood Community Board:

1. Receives the information in the report noting that noise levels at the Fairway Reserve basketball facility are compliant with City Plan standards.
2. Acknowledges and considers the range of possible solutions outlined in this report.

Community Board Resolved CBCB/2017/00050

Part C

That the Coastal-Burwood Community Board:

1. Receives the information in the report noting that noise levels at the Fairway Reserve basketball facility are compliant with City Plan standards.
2. Acknowledges the range of possible solutions outlined in this report.
3. Requests staff to explore the viability of a range of options to address the noise issues, including acoustic/sound proof fencing with incorporated appropriate planting options and enforcement options and to report back to the Board as soon as is practically possible.

Kim Money/Linda Stewart

Carried

8. Mairehau/Inwoods Pedestrian Refuge Island

Staff Recommendation Accepted Without Change

Community Board Resolved CBCB/2017/00051 Staff Recommendation accepted without change

Part C

That the Coastal-Burwood Community Board:

1. Approves that a central pedestrian refuge island be constructed on Mairehau Road in accordance with Attachment A.

2. Revokes all existing parking restrictions on the south side of Mairehau Road commencing at a point 71 metres south east of its intersection with Karlaw Place and extending in a southeasterly direction for a distance of 14 metres.
3. Approves that the stopping of vehicles be prohibited at any time on the south side of Mairehau Road commencing at a point 71 metres south east of its intersection with Karlaw Place and extending in a southeasterly direction for a distance of 14 metres.
4. Revokes all existing parking restrictions on the north side of Mairehau Road commencing at a point 21 metres north west of its intersection with Inwoods Road and extending in a northwesterly direction for a distance of 17 metres.
5. Approves that the stopping of vehicles be prohibited at any time on the north side of Mairehau Road commencing at a point 21 metres north west of its intersection with Inwoods Road and extending in a northwesterly direction for a distance of 17 metres.

Glenn Livingstone/Linda Stewart

Carried

Tim Baker arrived 5.16pm

9. Conference - Diverse coastal environments in times of change

Board Comment

The Board requested staff to establish if the various field trips included in the conference programme involved meeting local residents.

Staff Recommendations

That the Coastal-Burwood Community Board:

1. Approves the operational funds necessary to enable interested Board members to attend the "Diverse coastal environments in Times of Change" conference in Christchurch on 22 March to 24 March 2017.
2. Approves a sponsorship contribution of \$1,000 from its Discretionary Response Fund to assist the Coastal Restoration Trust of New Zealand with the facilitation of the "Diverse coastal environments in Times of Change" conference.

Community Board Resolved CBCB/2017/00052

Part C

That the Coastal-Burwood Community Board:

1. Approves the operational funds necessary to enable Kim Money, Linda Stewart, Tim Sintes to attend the "Diverse coastal environments in Times of Change" conference in Christchurch on 22 March to 24 March 2017 and field trips by arrangement. Noting David East is able to attend all activities at no cost.

Glenn Livingstone /Tim Baker

Carried

Community Board Resolved CBCB/2017/00053

2. Approves a sponsorship contribution of \$1,000 from its Discretionary Response Fund to assist the Coastal Restoration Trust of New Zealand with the facilitation of the "Diverse coastal environments in Times of Change" conference.

Tim Baker/Glenn Livingstone

Carried

10. Coastal-Burwood Community Board Area Report

- 10.1 Community Board Plan** – Staff notified the Board that a workshop will be held to develop the Community Board Plan.
- 10.2 New Brighton Tiny Huts** – Staff undertook to obtain further detail regarding the options for the tiny huts and their placement. In particular, was there the ability to comment on other options.
- 10.3 Development of Civil Defence Emergency Plans** – Staff undertook to arrange a workshop with the Board regarding the development of Civil Defence Emergency Plans including messaging to the community and the distribution of tsunami evacuation zone maps.
- 10.4 Avon River Stopbanks** – The Board noted previous information from staff regarding Avon River temporary stopbanks and requested staff to obtain information on when gravel temporary stopbanks would have further work completed on them. The Board understood that the work was to progress in a west to east direction.
- 10.5 Pages Road Bridge Design** – The Board requested staff to obtain the Pages Road Bridge re-build designs that had been developed by Stronger Christchurch Infrastructure Rebuild Team. This information would assist with deliberation on the adjacent footpath repairs proposed.
- 10.5 Christchurch School of Gymnastics** – Staff advised that the Christchurch School of Gymnastics was seeking a letter of support from the Board as part of their application to NZ Lotteries Board for a Significant Projects Funding grant. The support sought was for their rebuild project on QEII Park.

Staff Recommendation

That the Coastal-Burwood Community Board receives the Area Update.

Community Board Resolved CBCB/2017/00054

Part C

1. That the Board agrees to send a letter of support in principle for the Christchurch School of Gymnastics rebuilding project.

David East/Kim Money

Carried

Community Board Resolved CBCB/2017/00055

Part C

2. That the Coastal-Burwood Community Board receives the area update

Glenn Livingstone/Tim Sintes

Carried

11. Elected Member Information Exchange

Part B

- 11.1 Community Resilience Fund – The Board asked staff to obtain information on this fund and the process for applying.

- 11.2 Estuary Road Sealing – The Board asked staff to investigate the recent tar sealing of Estuary Road to establish if the road edges would receive the same treatment as the carriageway portion.
- 11.3 Midge in Shortland Street – The Board asked staff to investigate the midge infestation issues relating to an address in Shortland Street.
- 11.4 The X Races event held in New Brighton was well attended.
- 11.5 The Canterbury Women's Surf Championships were held in New Brighton as well as a South Brighton Planting Day – both were well attended. The Board requested staff to send a letter of thanks to the Student Volunteer Army who had organised the Planting Day.

Member Livingstone left the meeting at 6:32 pm.

12. Questions Under Standing Orders

Part B

There were no questions under Standing Orders at this meeting.

Meeting concluded at 6.47pm.

CONFIRMED THIS 20th DAY OF MARCH 2017

KIM MONEY
CHAIRPERSON

6. Staff Briefings

Reference: 17/240749

Contact: Peter Croucher peter.croucher@ccc.govt.nz 941 5305

1. Purpose of Report

The Board will be briefed on the following:

Subject	Presenter(s)	Unit/Organisation
New Brighton Streetscape Enhancements: part of the Masterplan works	Louis Collingwood	Project Manager, Consultant, Transport Unit.

2. Staff Recommendations

[That the Coastal-Burwood Community Board notes the information supplied during the Staff Briefings.](#)

Attachments

There are no attachments to this report.

7. Horseshoe Lake Reserve Earthquake Repairs

Reference: 16/1446936

Contact: Steven Gray

steven.gray@ccc.govt.nz

941 8256

1. Purpose and Origin of Report

Purpose of Report

- 1.1 The purpose of this report is for the Coastal-Burwood Community Board to approve the landscape concept plans, attachment A and attachment B, for the bridge removal, path realignment and new car park at Horseshoe Lake Reserve.

Origin of Report

- 1.2 This report is staff generated following an information seminar with the Burwood/Pegasus Board in September 2016 regarding earthquake repair options.
- 1.3 Significance
- 1.4 The decisions in this report are of low significance in relation to the Christchurch City Council's Significance and Engagement Policy.
 - 1.4.1 The level of significance was determined by the project being low cost and affecting a limited number of direct residents however the decision will benefit city wide users.
 - Provides environmental improvements through the removal of damaged assets next to a water body
 - Reinstates levels of service the community have not benefited from in the last six years
 - 1.4.2 The community engagement and consultation outlined in this report reflect the assessment.

2. Staff Recommendations

That the Coastal-Burwood Community Board:

1. Approve the concept landscape plan, attachment A for the footbridge removal and path realignment at Horseshoe Lake Reserve.
2. Approve the concept landscape plan, attachment B, for the location of new car park near the corner of Horseshoe lake Road and Lake Terrace Road at Horseshoe Lake Reserve.

3. Key Points

- 3.1 This report does support the [Council's Long Term Plan \(2015 - 2025\)](#).
- 3.2 The following feasible options have been considered:
 - Option 1 - Bridge Removal, New Tack and Car Park Relocation (preferred option)
 - Option 2 - Bridge Replacement and New Car Park
 - Option 3 – Remove Bridge and Car Park and Not Replace
- 3.3 Option Summary - Advantages and Disadvantages (Preferred Option)
 - The advantages of this option include:
 - Remove the damaged bridge and salvage the existing handrails for reuse

- Close the existing car park and remove the hard stand surface and base
- Replant the old car park space with appropriate native plants
- Realign the path to cross over the culvert and connect to the toilet block
- Better stable ground conditions which is less likely to move in future earthquake events
- Extend the barriers around the culvert by reusing the existing handrail and barriers from the bridge
- New planting where required along the new path and old bridge location
- Construct 28 new car parking spaces on better stable ground
- The car park proposal allows for future expansion if required
- The car park will provide a good walkway connection to the public toilets and existing track network
- Proposal is in keeping with the 2002 Horseshoe Lake Master Plan

3.3.2 The disadvantages of this option include:

- Shrub vegetation will be removed for this path realignment
- Not having a car park on the lake front, however to other lake front car parks exist further along the reserve

4. Context/Background

Earthquake Damage to the Reserve

- 4.1 Following the 2011 and 2012 earthquake's, there was significant damage caused to parts of the Reserve with one of these areas being near the intersection of Lake Terrace Road and Horseshoe Lake Road.
- 4.2 The damaged caused was to the pedestrian footbridge over the Old No 2 Drain and to the small car park next to the lake.
- 4.3 Land damage occurred on both sides of the bridge and in the car park and suffered significant lateral and vertical land deformation and low lying land skirting the lake.
- 4.4 Other earthquake damaged has occurred within the reserve with some of these areas already repaired. This other repair work has occurred only in areas on the north and east side of the lake which borders 'Green Zoned' land and didn't involve any changes to the park assets.
- 4.5 The location for this proposed work is shown below in figure 1.

Figure 1: Horseshoe Lake Reserve – bridge / car park location



- 4.6 Eliot Sinclair engineers have been commissioned to investigate the damage and provide options for these asset renewals.
- 4.7 In the Eliot Sinclair Options Report, attachment C, consideration is given to replacing the bridge with a "Floating Deck" and stone piling to help stabilise the bank or to realign the pedestrian route onto more stable ground. These options are cover in more depth further in this report.



4.8 Existing Footbridge

- The bridge structure is composed of Dycore panels with a timber handrail fixed to the bridge deck
- It is 9 metres long by 2.4 metres wide
- It was supported on six (three at each end) 7 metres deep piles with concrete abutments
- The earthquakes have caused the bridge to move off its piles and has twisted and snapped the top deck

Figure 2: Damaged Foot Bridge



4.9 Existing Carpark

- The car park has 7 parking spaces, with timber wheel stops and bollards to separate the pedestrian walkway
- The chip seal has broken with the base moving and splitting open
- The bollards and wheel stops have all moved with some breaking
- The land has suffered severe liquefaction-induced settlement and lateral spread towards the lake as shown in figure 3

Figure 3: Damaged Car Parks



5. Option 1 – Bridge Removal, New Tack and Car Park Relocation (preferred)

Option Description

- 5.1 Following the Eliot Sinclair Options Report, attachment C, Elliot Sinclair was commissioned to provide conceptual designs for the realignment of the foot path, bridge removal, and relocation and layout for a new car park based on the report supporting this as the most viable option.

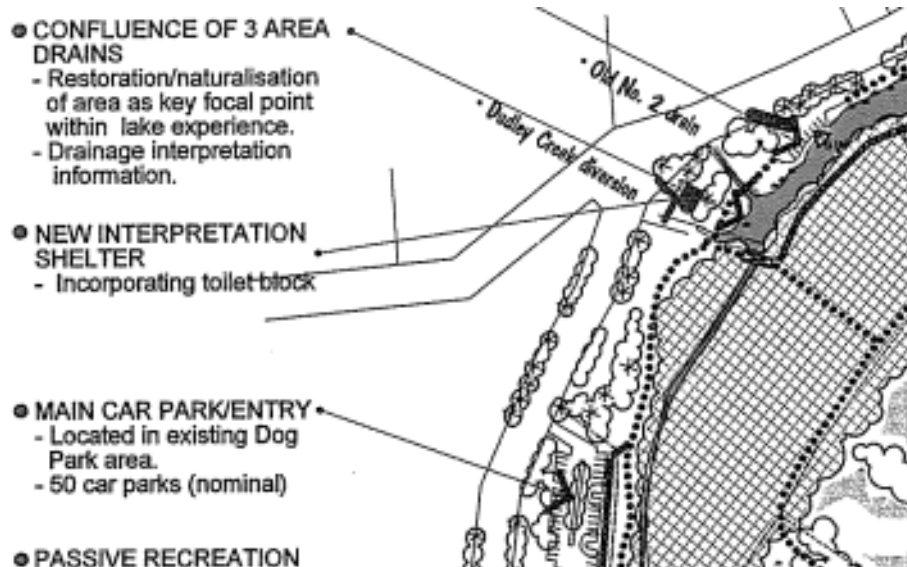
- 5.2 The Parks Manager supports this proposal as being the most viable and economical approach.
- 5.3 **Bridge Removal and Path Realignment:**
- 5.3.1 Remove the damaged bridge and salvage the existing handrails for reuse.
 - 5.3.2 Realign the path to cross over the culvert which is 26 metres upstream from the damaged bridge and provide a new connection to the toilet block
 - 5.3.3 Extend the barriers around the culvert by reusing the existing handrail and barriers from the bridge
 - 5.3.4 A small amount of shrub vegetation will be removed to allow for the path realignment
 - 5.3.5 A “rock hop” crossing is proposed in the old bridge location. This will be finalised in the detail design and confirmed on site in the construction phase if deemed suitable and safe.
 - 5.3.6 New planting will be included where required along the new path and old bridge location
- 5.4 The photos in figure 4 show the path realignment location as viewed from Lake Terrace Road above the culvert.

Figure 4: Path alignment over the culvert



- 5.5 **Car Park Relocation:**
- 5.5.1 Close the existing car park and remove the hard stand surface and base.
 - 5.5.2 Replant the old car park space with appropriate native plants
 - 5.5.3 Relocate the car park to the flat land off Horseshoe Lake Road. This site is consistent with the 2002 Master Plan for Horseshoe Lake Reserve. Refer attachment D and the snippet from this master plan show in figure 5 below.
 - 5.5.4 The new car park layout has been designed to allow for expansion if required in the future depending on reserve development. A maximum of 84 parking spaces is shown but it is proposed to develop these in stages as required.
 - 5.5.5 The first stage allows for 28 parking spaces which includes two disabled spaces and comprises of two separate bays with 14 parking spaces per bay.
 - 5.5.6 This layout allows for pedestrian access from a central point linking with the Horseshoe Lake track network.
 - 5.5.7 One entry / exit point is shown into the car park from the road which will allow easier management of the car park.
 - 5.5.8 Storm water from the car park will be managed through a number of shallow planted swales.

Figure 5: Horseshoe Lake Master Plan 2002



Significance

- 5.6 The level of significance of this option is low consistent with section 2 of this report.
- 5.7 Engagement requirements for this level of significance are noted under Community Views and Preferences.

Impact on Mana Whenua

- 5.8 This option does not involve a significant decision in relation to ancestral land or a body of water or other elements of intrinsic value, therefore this decision does not specifically impact Ngāi Tahu, their culture and traditions.

Community Views and Preferences

- 5.9 Through the seminar meeting with the Community Board, the level of consultation was discussed and the influence consultation would provide in the decision making.
- 5.10 It was considered that although this is a well-used reserve by the public and due to the economic options it was felt that there would be no advantage in public consultation based on the following reasons:
- 5.10.1 This option was returning back a level of service that hadn't been available for six years
- 5.10.2 The path realignment would provide the same level of service as the bridge
- 5.10.3 The cost to replace the bridge did not make it a feasible option when an alternative was available at a lower cost
- 5.11 The Community Board did request that contact was made with the Christchurch Golf Club and Regenerate Christchurch.
- 5.12 Both of this organisations have responded, Christchurch Golf Club 21 November 2016 and Regenerate Christchurch 4 November 2016, and neither have any concerns with the proposed car park plans and path realignment.
- 5.13 These replies are recorded in Trim 16/1296178 and 16/1357960.
- 5.14 The proposed car park location was part of the 2002 consultation and Master Plan.
- 5.15 Although this Master Plan was 15 years ago, there is no direct impact of residents or park users.

- 5.16 The car park area is an old hard fill site therefore provided very limited options for this space, hence the original car park proposal.

Alignment with Council Plans and Policies

- 5.17 This option is consistent with Council's Plans and Policies

5.17.1 Physical Recreation and Sports Strategy 2002

5.17.2 Parks and Waterways Access Policy 2002

Financial Implications

- 5.18 Cost of Implementation - The current cost estimates to implement this work will be managed within the existing Capital budget.

- 5.19 Maintenance / Ongoing Costs:

5.19.1 The maintenance of the new track will be offset by the cost from carry our annual structural inspections, so no increase in maintenance cost.

5.19.2 The operational cost on car parks generally is low and as this is a new asset it is expected that there would be none to very low maintenance costs for the first 5 years.

- 5.20 Funding source - Projects listed in the current Capital Programme:

5.20.1 Horseshoe Lake Reserve EQ Repairs (8234)

5.20.2 Horseshoe Lake Reserve Footbridge repairs (11384)

Legal Implications

- 5.21 Resource Consent will be required for the new car park due to being on an old hard fill land fill site.
- 5.22 Work to remove the damaged bridge and realign the track may require a resource consent but are likely to be covered under the Councils global consent for this activity. If a new consent is required this will be applied for in the normal manner.

Risks and Mitigations

- 5.23 New Track: There is very low risk in this option as no deep foundations are required for the track realignment.
- 5.24 Car Park: This is on an old hard fill land fill site with a risk of ground settlement or land cracking in future earthquake events. However this site only had minor damage with small cracking in the surface 2012 events.
- 5.25 Risk: Uncertainty caused by old hard fill land fill site. This may result in higher construction cost depending on the chosen method for treating this.
- 5.25.1 Treatment: Auger and penetrometer tests have been carried out in the proposed car park location. There are several methods to approaching construction which will be investigated further in the detail design stage.
- Dig out the land fill material and replace with good compacted base course. This material would need to be tested and disposed of correctly
 - Or limit the depth of excavation to not disturb the land fill material. Some future settlement may occur causing some surface crack in the car park. This is not considered an issue as the hard fill land fill is decades old and only had minor cracking in the 2012 events
 - The most appropriate method will be used based on construction cost and any potentially operational cost

5.25.2 Residual risk rating: the rating of the risk is medium.

Implementation

5.26 Implementation dependencies - Gaining Community Board approval to proceed to construction.

5.27 Implementation timeframe -

- Board approval - 20 March 2017
- Detail design, obtaining consents (where required) and tendering – April / May 2017
- Construction completed –
 - Bridge removal and new track June / July 2017
 - Car park October 2017

Option Summary - Advantages and Disadvantages

5.28 The advantages of this option include:

- Remove the damaged bridge and salvage the existing handrails for reuse
- Close the existing car park and remove the hard stand surface and base
- Replant the old car park space with appropriate native plants
- Realign the path to cross over the culvert and connect to the toilet block
- Better stable ground conditions which is less likely to move in future earthquake events
- Extend the barriers around the culvert by reusing the existing handrail and barriers from the bridge
- New planting where required along the new path and old bridge location
- Construct 28 new car parking spaces on better stable ground
- The car park proposal allows for future expansion if required
- The car park will provide a good walkway connection to the public toilets and existing track network
- Proposal is in keeping with the 2002 Horseshoe Lake Master Plan

5.29 The disadvantages of this option include:

- Shrub vegetation will be removed for this path realignment
- Not having a car park on the lake front, however two other lake front car parks exist further along the reserve

6. Option 2 – Bridge Replacement and New Car Parks

Option Description

6.1 The car parking option is the same as reported in Option one in this report with the relocation of the car park

6.2 The existing bridge is damaged to the point it cannot be repaired.

6.3 It is possible to build a new bridge with an alternative design (timber) with the following elements:

6.3.1 Foundations that are able to spread, settle and distort without damaging the deck

6.3.2 The timber deck would be connected using a foundation – deck connection to act as a 'fuse'. This would allow the foundations to move independently of the deck

- 6.3.3 The timber deck would need to be able to withstand land and foundation movement and be moveable to allow for foundation remediation in a future event
- 6.4 The cost of a timber bridge would be in the order of \$50,000 which does not include the foundation costs or engineering design of the bridge.
- 6.5 The foundation would require specific engineering based on an in-depth Geotech investigation and could include stone columns or piles
- 6.6 The investigations to date shows this land to of poor bearing

Significance

- 6.7 The level of significance of this option is low consistent with section 2 of this report.
- 6.8 Engagement requirements for this level of significance are noted under Community Views and Preferences.

Impact on Mana Whenua

- 6.9 This option does not involve a significant decision in relation to ancestral land or a body of water or other elements of intrinsic value, therefore this decision does not specifically impact Ngāi Tahu, their culture and traditions.

Community Views and Preferences

- 6.10 Refer comments in Options 1 of this report.

Alignment with Council Plans and Policies

- 6.11 This option is consistent with Council's Plans and Policies
 - 6.11.1 Physical Recreation and Sports Strategy 2002
 - 6.11.2 Parks and Waterways Access Policy 2002

Financial Implications

- 6.12 Cost of Implementation - The current cost estimates to implement this work will be managed within the existing Capital budget however this option is more expensive that option 1.
- 6.13 Maintenance / Ongoing Costs:
 - 6.13.1 Annual structural inspections are required on Park structure
 - 6.13.2 To maximise the life of a timber structure, ongoing treatment of the timber would be required through either staining or painting. The cost of this is unknown until a final design is completed. This would involve Parks Unit operational input so there is a clear understanding of this maintenance requirement.
 - 6.13.3 The operational cost on car parks generally is low and as this is a new asset it is expected that there would be none to very low maintenance costs for the first 5 years.
- 6.14 Funding source - Projects listed in the current Capital Programme:
 - 6.14.1 Horseshoe Lake Reserve EQ Repairs (8234)
 - 6.14.2 Horseshoe Lake Reserve Footbridge repairs (11384)

Legal Implications

- 6.15 Resource Consent will be required for the new car park due to being on an old hard fill land fill site.
- 6.16 Work to construct a new bridge will require a Resource and Building Consent.

Risks and Mitigations

- 6.17 Ground conditions for bridge foundations

6.18 Risk:

- 6.18.1 Uncertainty caused by insufficient data on ground stability. This could result in high capital costs with further investigation work and piling treatment
- 6.18.2 Not gaining a Resource or Building Consent
- 6.18.3 Treatment: Undertake in-depth Geotech investigation work to develop a suitable foundation design
- 6.18.4 Residual risk rating: the rating of the risk is Very high

Implementation

6.19 Implementation dependencies:

- 6.19.1 Gaining Community Board approval to proceed to construction.
- 6.19.2 Gaining all required consents

6.20 Implementation timeframe -

- Board approval -20 March 2017
- Detail design, obtaining consents and tendering – April to July 2017
- Construction completed:
 - Bridge removal and construction of a new bridge August to September 2017
 - Car park October 2017

Option Summary - Advantages and Disadvantages

6.21 The advantages of this option include:

- Replaces a bridge with a bridge
- Same advantages as Options 1 for the car park relocation

6.22 The disadvantages of this option include:

- Higher design and construction costs for the bridge
- Investing in an asset in earthquake prone land with poor soil bearing conditions
- The bridge will be more vulnerable to future damaging events when there is a robust alternative as stated in Option 1

7. Option 3 - Remove Bridge and Car Park and Not Replace

Option Description

- 7.1 This option would be to remove the damaged bridge and car park and not replace / rebuild these assets.
- 7.2 Reinstatement of the sites would be required which would involve planting the car park area as stated in Option 1.
- 7.3 There would be no walking track connection across or around the Old No2 Drain apart from using the road.
- 7.4 This Option is not considered suitable as it changes the level of service and does not provide a safe alternative walk route for park users.

Significance

- 7.5 The level of significance of this option is low consistent with section 2 of this report.

- 7.6 Engagement requirements for this level of significance are noted under Community Views and Preferences but this was not discussed with the Board to not replace these assets.

Impact on Mana Whenua

- 7.7 This option does not involve a significant decision in relation to ancestral land or a body of water or other elements of intrinsic value, therefore this decision does not specifically impact Ngāi Tahu, their culture and traditions.

Community Views and Preferences

- 7.8 Refer 5.9 of Option 1 in this report.

Alignment with Council Plans and Policies

- 7.9 This option is inconsistent with Council's Plans and Policies
- 7.9.1 Inconsistency – Reduces the exist Level of Service
 - 7.9.2 Reason for inconsistency – By not replacing existing assets
 - 7.9.3 Amendment necessary - <enter text>

Financial Implications

- 7.10 Cost of Implementation – The cost to remove the assets would be covered under the Capital project budget
- 7.11 Maintenance / Ongoing Costs – This would be reduced with no car park or bridge to maintain
- 7.12 Funding source - Projects listed in the current Capital Programme:
- 7.12.1 Horseshoe Lake Reserve EQ Repairs (8234)
 - 7.12.2 Horseshoe Lake Reserve Footbridge repairs (11384)

Legal Implications

- 7.13 No legal requirements for this option.

Risks and Mitigations

- 7.14 The main risk would be with not meeting a Level of Service and concerns from the public.
- 7.15 Risk Uncertainty caused by no community engagement on the removal of these assets.
- 7.15.1 Treatment: Undertake a separate round of community consultation to determine the community's views on not replacing these assets.
 - 7.15.2 Residual risk rating: the rating of the risk is High.

Implementation

- 7.16 Implementation dependencies - Community Board approval
- 7.17 Implementation timeframe – Removal work would be completed this financial year.

Option Summary - Advantages and Disadvantages

- 7.18 The advantages of this option include:
- Less assets to maintain
- 7.19 The disadvantages of this option include:
- Unhappy residents with loss of a walkway connection
 - Public safety with people likely to use the road margin to get around the waterway
 - Reduced Level of Service

Attachments

No.	Title	Page
A ↓	Horseshoe Lake Reserve Concept Plan Path Realignment and Bridge Removal	25
B ↓	Horseshoe Lake Reserve New Car Park Location	26
C ↓	Bridge Options Report Feb 2016	27
D ↓	Horseshoe Lake Reserve 2002 Master Plan	51

Confirmation of Statutory Compliance

Compliance with Statutory Decision-making Requirements (ss 76 - 81 Local Government Act 2002).

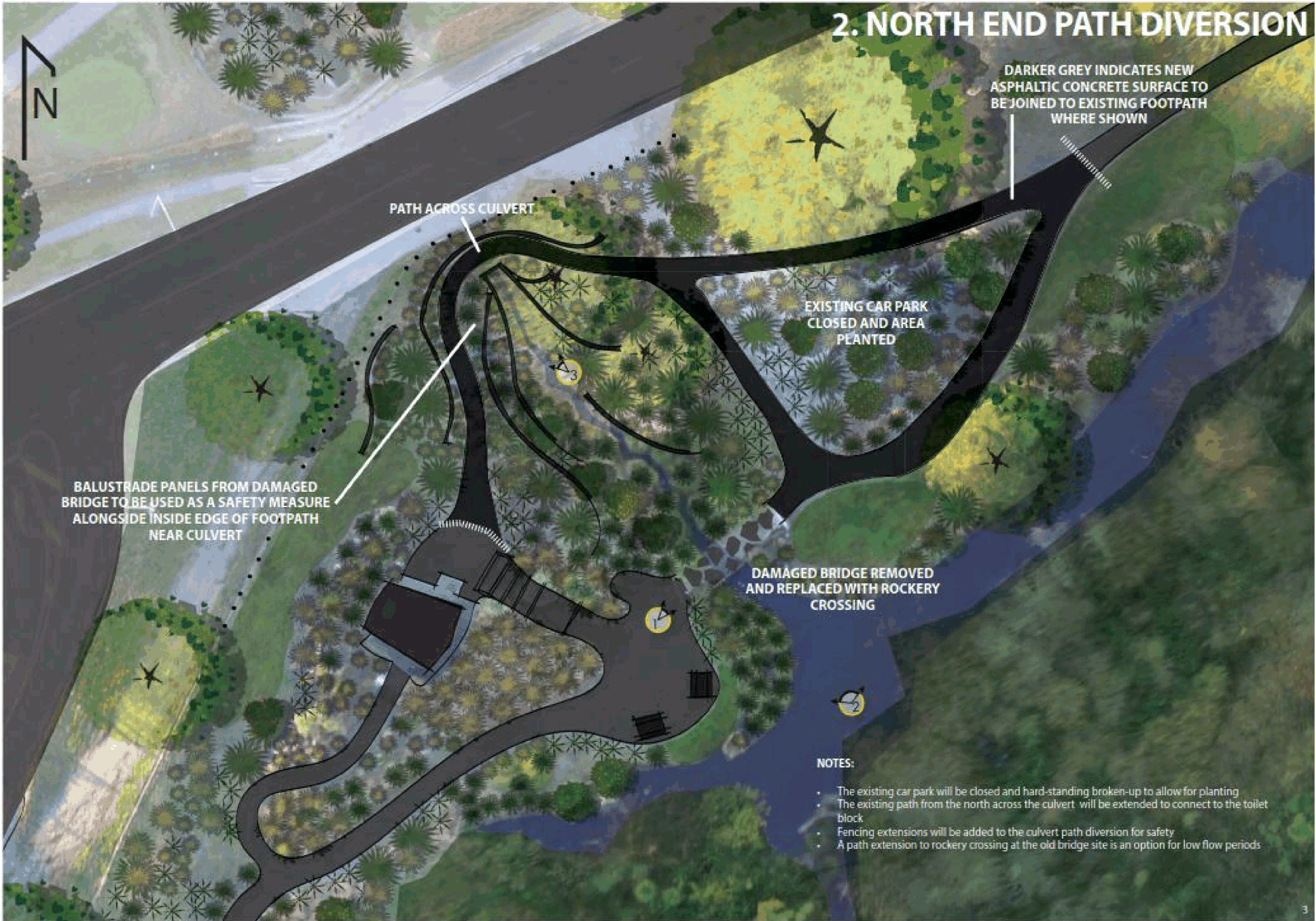
(a) This report contains:

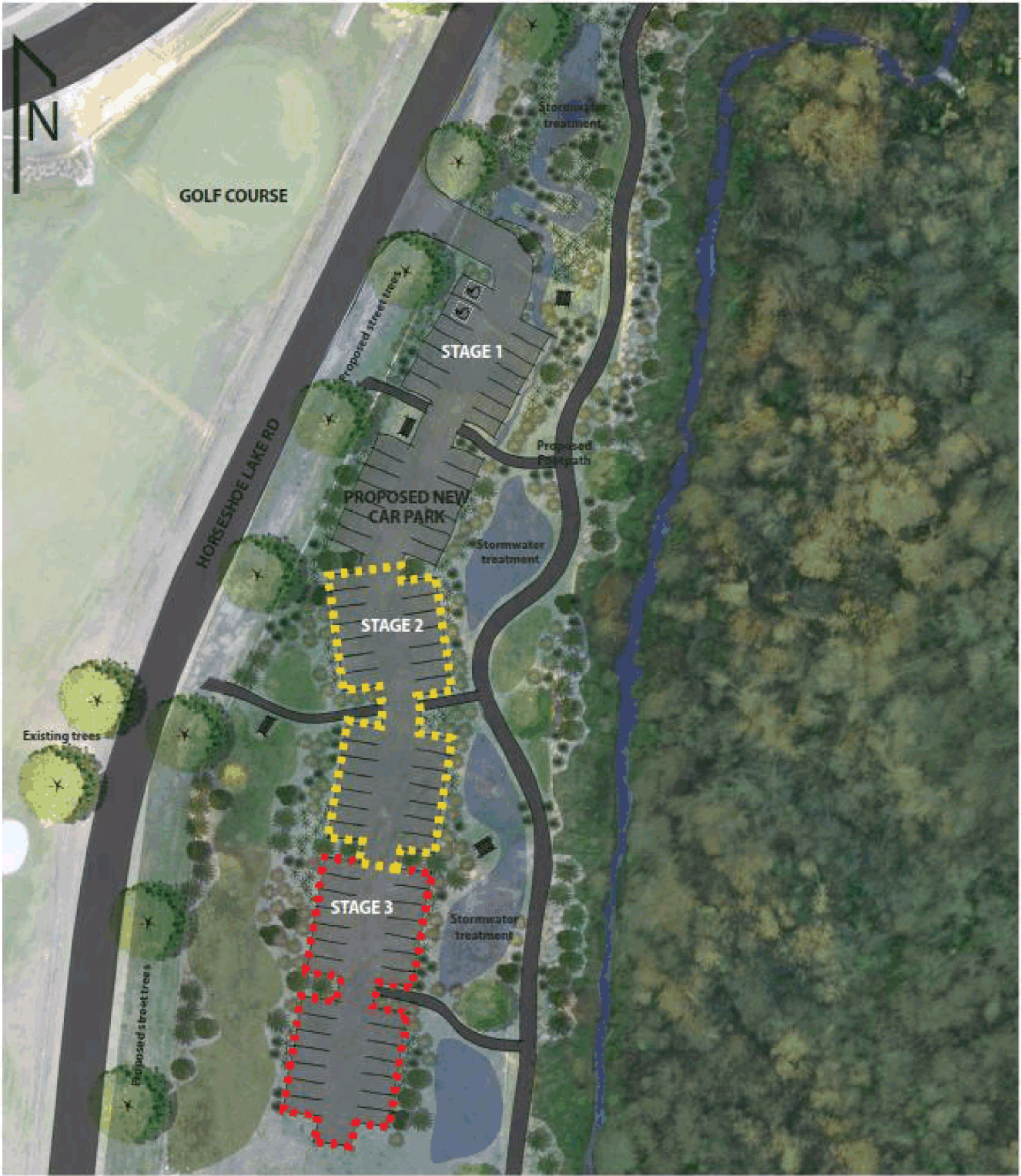
- (i) sufficient information about all reasonably practicable options identified and assessed in terms of their advantages and disadvantages; and
- (ii) adequate consideration of the views and preferences of affected and interested persons bearing in mind any proposed or previous community engagement.

(b) The information reflects the level of significance of the matters covered by the report, as determined in accordance with the Council's significance and engagement policy.

Signatories

Author	Steven Gray - Project Manager
Approved By	Darren Moses - Manager Capital Delivery Community Liam Nolan - Head of Vertical Capital Delivery and Professional Services David Adamson - General Manager City Services





	<p>Horseshoe Lake Reserve Landscape Concept Plan New Car Park Location</p>	<p>For Board Approval March 2017</p>
---	---	--

Eliot Sinclair

surveyors | engineers | planners

land development consultants | land & hydrographic surveyors | civil, structural, geotechnical & environmental engineers | resource management planners | landscape architects

2 February 2016

Our Ref: 411442

Christchurch City Council
Civic Offices
PO Box 73011
Christchurch 8154

Attention: Mark Humphrey mark.humphrey@ccc.govt.nz

Dear Mark,

Horseshoe Lake Bridge (F807) options report

1 Introduction

Eliot Sinclair & Partners Ltd (ES) was commissioned by the Christchurch City Council (CCC) to assist in the review of remedial options for the earthquake-damaged Horseshoe Lake Bridge (F807), a pedestrian bridge.

2 Objective

The main objective of the exercise was to determine the pros and cons of repairing / restoring the bridge in situ (Option 1) or rerouting foot traffic to avoid the need for the bridge (Option 2).

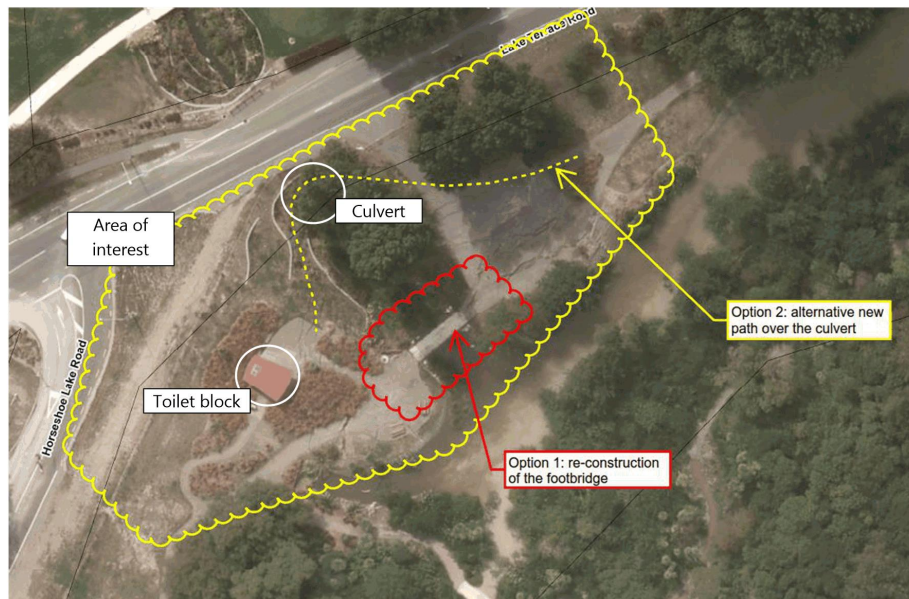


Figure 1 Site layout plan (north at top)

Eliot Sinclair and Partners Ltd. 20 Troup Drive, PO Box 9339, Tower Junction, Christchurch 8149, Phone: +64 3 379-4014, Fax: +64 3 365-2449, info@eliotstinclair.co.nz

Directors: Marton Sinclair BE BSc FNZIS MIPENZ CPEng IntPE RPSurv Mark Allan BSurv NZCLS MNZIS RPSurv Maurice Perwick Dip Surv MNZIS RPSurv MSSSI CPHS1
Bruce Sinclair BSc MNZIS RPSurv John Brouard BE MIPENZ CPEng Warren Haynes BSurv MNZIS RPSurv **Principals:** Richard Wilson BE MIPENZ CPEng
John Aramowicz BE Mining(Hons) MIPENZ CPEng IntPE **Associates:** Ken Burrowes NZCD ANZIS Alistair Cocks BSurv NZCLS MNZIS RPSurv Keith Mills BSc MNZIS RPSurv
John Henry BE(Hons) MIPENZ CPEng Simon Ironside BSurv MNZIS RSurv MSSSI CPHS1 Darren Hocken BSurv MNZIS LCS Nick Harwood BE(Hons) MSc DIC CPEng IntPE

www.eliotstinclair.co.nz 411442_16033165707_LH_nkh_Horseshoe Lake Bridge options

3 Scope of Work

The CCC instruction for the commission was defined via a site meeting and walkover inspection (9 Dec 2015) and subsequent emails (9 Dec 2015 & 18 Dec 2015).

The scope of work undertaken was as follows:

- Review of CCC report on bridge damage (23 Oct 2012) and Construction Details drawing (attached)
- Geotechnical desk study (attached)
- Site inspection of damaged bridge and land, the site's terrain, and an alternative pedestrian route
- Topographic survey (attached)
- Engineering commentary on options, including cost estimation, as appropriate

4 Bridge details

Details of the bridge are presented in the CCC report (Oct 2012) and the Construction Details drawing (attached).

The bridge is relatively new (<10 years old). It is a "standard dycore bridge" (see drawing) with 9 metre span and 2.4m clear width. It crosses a small stream/drain that outfalls into Horseshoe Lake to the immediate south. According to the drawing the foundations are 7m deep driven timber piles; three at each end. There is a wastewater pressure main under the bridge (refer to attached services plans).

The Canterbury Earthquake Sequence caused significant lateral and vertical land deformation at the bridge and adjoining low-lying land skirting the lake.

5 Geotechnical review

Refer to attached desk study report.

1. The site is a non-residential area so has little specific earthquake damage mapping, although there is clear evidence of liquefaction-induced land damage. Also, there are no available geotechnical records (e.g. CPTs, BHs). However, geological mapping, local knowledge and records of damage indicate the presence of loose/soft alluvial soil with high groundwater level at the bridge site.
2. The site is close to a geological transition that coincides with a terrain transition - a terrace of a historic loop (with a horseshoe plan shape) of the Avon River (technically referred to as an *oxbow lake*) - hence, the road name "Lake Terrace Road".
3. Land to the west and north (on the terrace) has performed relatively very well through the Canterbury Earthquake Sequence (CES). However, the bridge location on land immediately adjoining the lake has suffered from severe liquefaction-induced settlement and lateral spread.
4. The site was subject to significant cumulative earthquake demand through the CES. Its soil and groundwater properties and its terrain characteristics predispose the site to earthquake-induced damage in the future, similar to that experienced.

6 Option 1 Bridge repair

Key issues with the land and existing bridge include:

1. The land at the bridge site is prone to severe earthquake-induced lateral and vertical deformation
2. The piled foundations are inappropriate for this type of land movement
3. The existing damaged deck has unknown structural integrity so likely needs to be replaced

Rebuilding the bridge in its current form and location may be achievable to comply with Building Act serviceability and ultimate limit state performance requirements, but it is an asset plainly at risk of damage with no/little inherent resilience.

Mitigation of the land deformation to suppress earthquake-damage effects are considered unwarranted for such a small-scale structure. Even if sound bearing is present at a suitable depth, piling should be avoided as piles are prone to earthquake-induced rotation / damage. A "floating deck" (i.e. one not tied to the abutments or bank seats) could be a solution that allows ground / foundation deformation without the deformation damaging the deck. After any movement the deck could then be re-seated but would not need replacing.

The estimate for bridge replacement (without ground improvement); including removal of old bridge, geotechnical assessment, new bridge design, consenting, project management, rerouting wastewater pressure main, and bridge construction on new foundations is in the order of \$100,000+GST.

Stone column ground improvement at the site to mitigate earthquake-induced damage is estimated to be in the range of \$50,000+GST, and is additional to the estimate given above.

A key issue for the bridge's suitability at its site is that there is a viable alternative pedestrian route with strong beneficial attributes (see below).

7 Option 2 Alternative pedestrian route

The alternative pedestrian route avoiding the damaged bridge takes a new path over the existing culvert headwall just upstream of the bridge (see Figure 1). Information provided by CCC regarding the culvert:

- The culvert was likely upgraded in 2008
- Originally a brick barrel, a new pipe sleeve was installed and new concrete box culverts added to the downstream (southern) end
- The toilet block and surrounding paths are due to be upgraded/repared in the near future under a separate contract. Works for the new path would be planned to integrate with the upgrade.
- The minimum width for the path should be 1200mm.
- The path should extend to the adjoining car park to the east. A decision on what to do with the car park is being considered at CCC.

The culvert headwall construction appears well-built with Firth® concrete block retaining walls including geogrid reinforcement. The location of the walls and culvert in the river terrace soil is clearly more resilient to resist earthquake-induced deformation, which is consistent with damage observations on other parts of the terrace (see attached geotechnical desk study).

Our site measurements and topographic survey confirm the minimum width available at the narrowest point between the block retaining wall and the existing handrail is 1.4m, therefore suitable for use.

Landscaping for the approx. 40m long path is straight-forward and there is a natural alignment for it from the edge of the existing car park access drive, contouring around to the culvert crossing and across a shallow slope towards the toilet block (see Figure 1). The handrail from the bridge could be used to add to the ends of existing culvert handrail, but otherwise the path needs normal construction works to be formed. Once the bridge was removed stepping stones could be provided at its location to provide an alternative crossing to add to the amenity of the area, if required. The bridge piles don't need to be removed unless there is a requirement to widen the stream locally and take away any throttling effect.

The estimate for deck removal & disposal, new path formation and re-use of the bridge handrails is in the order of \$60,000+GST. The alternative pedestrian route is essentially a landscaping project, with some engineering detailing, and considerably cheaper and more resilient than the bridge restoration, and with good use of the existing land contours over the existing culvert.

8 Recommendation

We recommend that Option 2 be adopted, and the path takes the route across the top of the culvert that shows little/no sign of earthquake-related damage.

9 Closure

We trust this report meets your needs. Please do not hesitate to contact the undersigned if you require further information.

Yours sincerely
ELIOT SINCLAIR & PARTNERS LTD



Nick Harwood
Associate
Senior Geotechnical Engineer
BE(Hons) MSc DIC IntPE CPEng
nkh@eliotsinclair.co.nz
NKH:nkh

enc. CCC Bridge report (Oct 2012)
Construction details drawing
Geotechnical desk study report
Topographic survey plan
Services plans

c.c. Steven Gray CCC steven.gray@ccc.govt.nz



STRUCTURAL INSPECTION REPORT
CAPITAL PROGRAMME GROUP

STRUCTURE: Horseshoe Lake Bridge F807	
ADDRESS: Lake Terrace Road, Shirley, Christchurch	
SIZE: 6.85m x 2.4m	
YEAR BUILT: 2002	
DRAWING No: N/A	
INSPECTION BY: John Bethell	DATE: 17/10/2012
REPORT PREPARED BY: JOHN BETHELL	DATE: 23/10/2012
REVIEW BY: Mark Humphery	DATE: 07/03/2013

1. INTRODUCTION

A Structural inspection was carried out on the Horseshoe Lake Bridge, Shirley, during the 17th of October 2012. The objective of this report is to determine the condition of the bridge after the 22nd of February Earthquake and recommend any remedial works required.

2. STRUCTURE DESCRIPTION

The Horseshoe Lake Bridge is a timber and concrete structure with a 6.9m x 2.4m footprint.

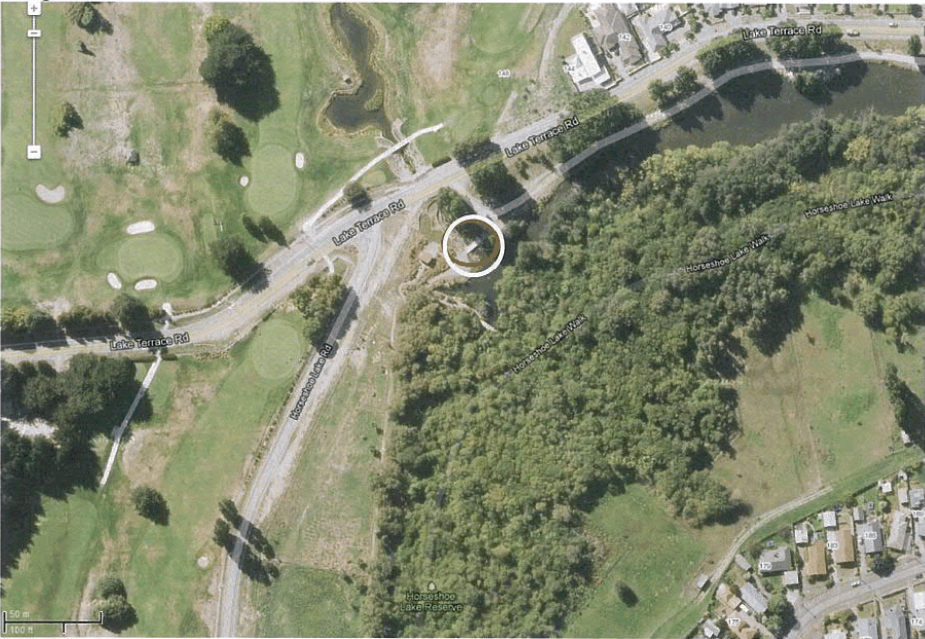


Figure 1 - View showing location of Horseshoe Lake Bridge

The bridge structure is composed of two grouted 6.5m Dycore concrete panels placed next to each other with Macrocarpa trimmer and kerb beams. A timber handrail is fixed to the deck. The bridge has concrete abutments which bear onto deep timber piles.



Figure 2 - Site photo showing bridge deck and handrail

3. INSPECTION

This inspection revealed obvious damage to the bridge foundations, but limited apparent damage to the deck span and handrails. The deck slab is significantly tilted and is noticeably difficult to walk upon. A crack has formed through the deck section near the eastern end. Some handrail beams have been pushed out and the adjacent carpark that the bridge serviced is no longer significantly used due to heavy damage.



Figure 3 - Photo illustrating crack in slab

4. DISCUSSION

Overall the structure has experienced significant damage due to seismic actions, mainly due to the ground conditions around the bridge which appear prone to liquefaction and lateral spreading. The ground settlement caused highly localised damage to the bridge in the form of a large crack through the section. Demolition and replacement in the current position would be the recommended option if the surrounding carpark and footpath are also repaired. It will be necessary to investigate the ground for a strong bearing layer to pile into in order to resist excess displacements due to liquefaction. The handrails could be salvaged as they appear to have only minimal damage. Any replacement works should be preceded by a ground investigation to determine the extent of foundations required in order to minimise the potential effects of liquefaction and ground movement.



Figure 4 - Photo showing bridge & damage to carpark (background)

5. RECOMMENDATIONS

It is recommended that ground conditions and site geology be assessed for future potential settlement and depth to any strong bearing layers. Following this a decision on whether the bridge is to be demolished and replaced or demolished only should be made. The bridge handrails may be salvaged and reused in the case of the structures replacement.

Yours faithfully,
John Bethell
ASSISTANT STRUCTURAL ENGINEER
CAPITAL PROGRAMME GROUP
CHRISTCHURCH CITY COUNCIL

REVIEWED BY

MARK HUMPHERY
SENIOR STRUCTURAL ENGINEER
CAPITAL PROGRAMME GROUP
CHRISTCHURCH CITY COUNCIL

Please Note: This report has been prepared by Capital Delivery Unit, Christchurch City Council solely for the benefit of our client. No liability is accepted by the author, in respect of its use by any other person. Any other person who relies upon any matter contained in this report does so entirely at their own risk.



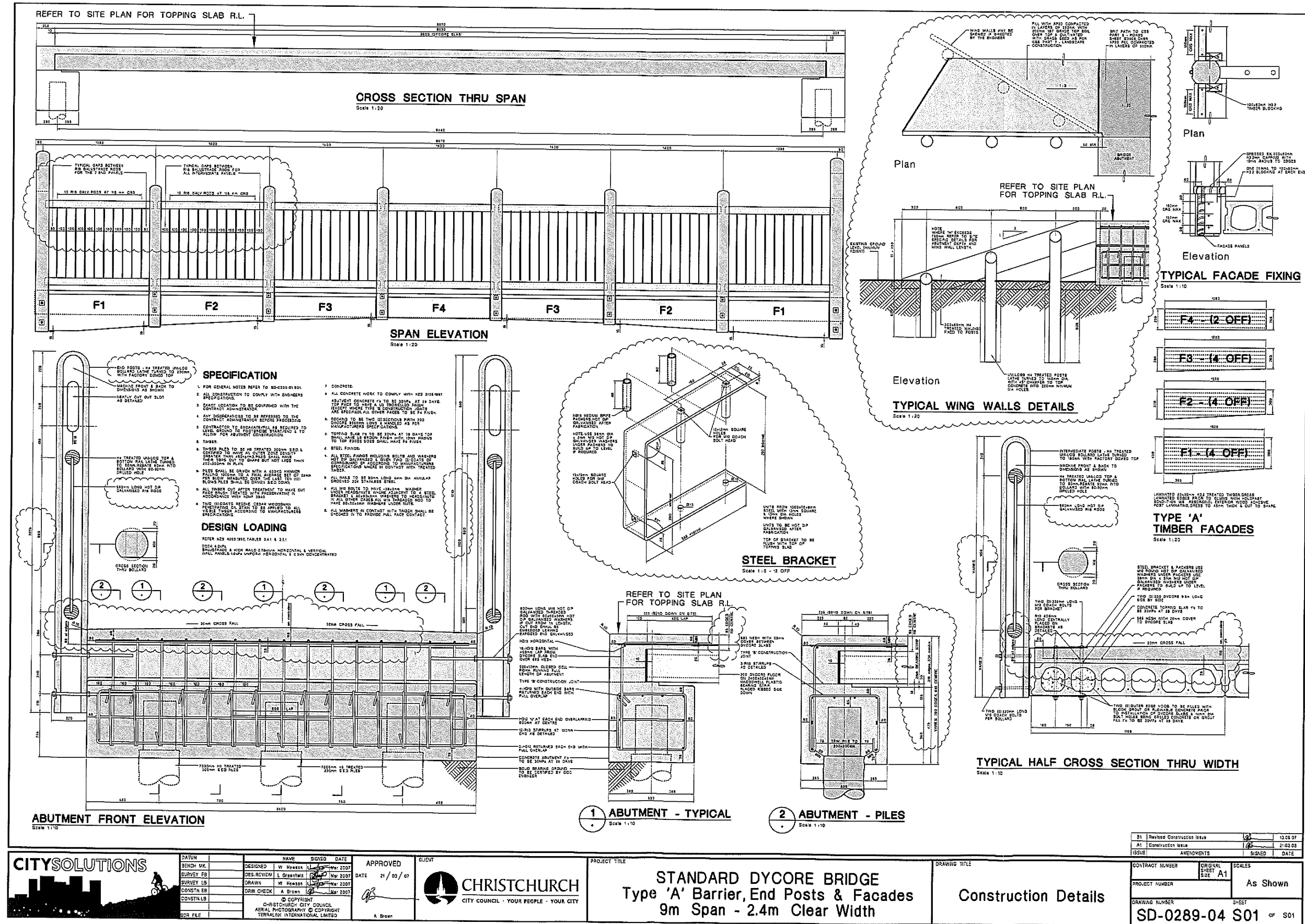












Horseshoe Lake Bridge F807
Desk study



Geotechnical Exec Summary based on Desk Study & CCC Inspection Report¹

1. The site is a non-residential area so has little specific earthquake damage mapping, although there is clear evidence of liquefaction-induced land damage. Also, there are no available geotechnical records (e.g. CPTs, BHs). However, geological mapping, local knowledge and records of damage indicate the presence of loose/soft alluvial soil with high groundwater level.
2. The site is close to a geological transition that coincides with a terrain transition - a terrace of a historic loop (with a horseshoe plan shape) of the Avon River (technically referred to as an *oxbow lake*) – hence, the road name “Lake Terrace Road”.
3. Land to the west and north (on the terrace) has performed relatively very well through the Canterbury Earthquake Sequence (CES). However, the bridge location on land immediately adjoining the lake has suffered from severe liquefaction-induced settlement and lateral spread.
4. The site was subject to significant cumulative earthquake demand through the CES. Its soil and groundwater properties and its terrain characteristics predispose the site to earthquake-induced damage in the future, similar to that experienced.

Nick Harwood

2 Feb 2016

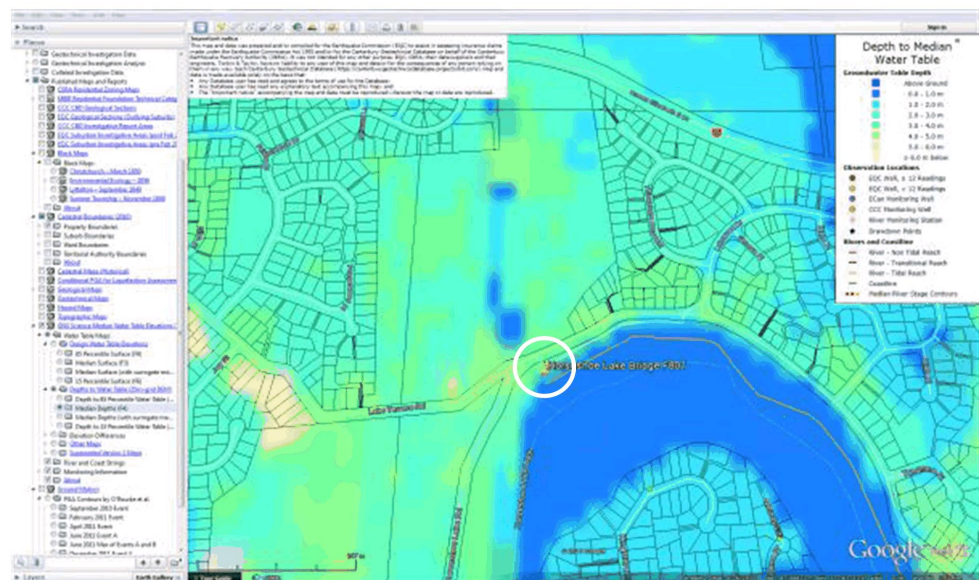
¹ CCC report by John Bethell; 23/10/12

Eliot Sinclair
surveyors | engineers | planners

Attachment C



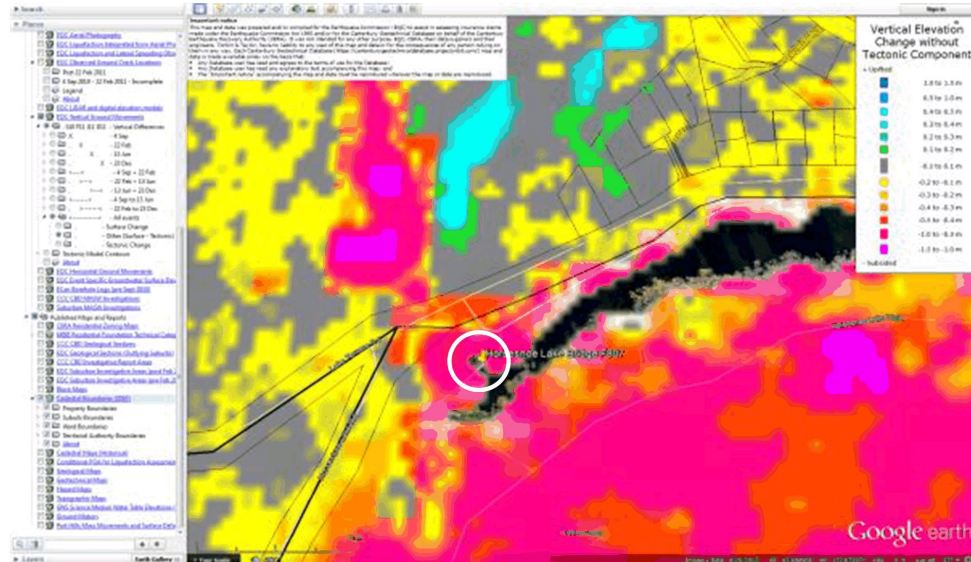
Attachment C



Horseshoe Lake Bridge F807
Desk study

Eliot Sinclair
surveyors | engineers | planners

Vertical Ground Movements - All Events / Other



4 September 2010 – damage observations



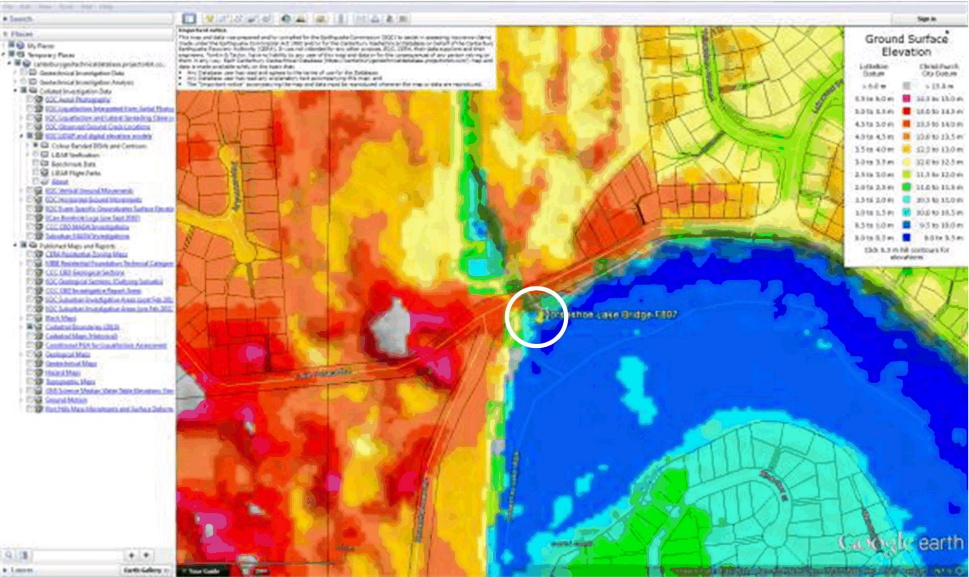
Horseshoe Lake Bridge F807
Desk study



22 February 2011 – damage observations



DEM Feb 2012

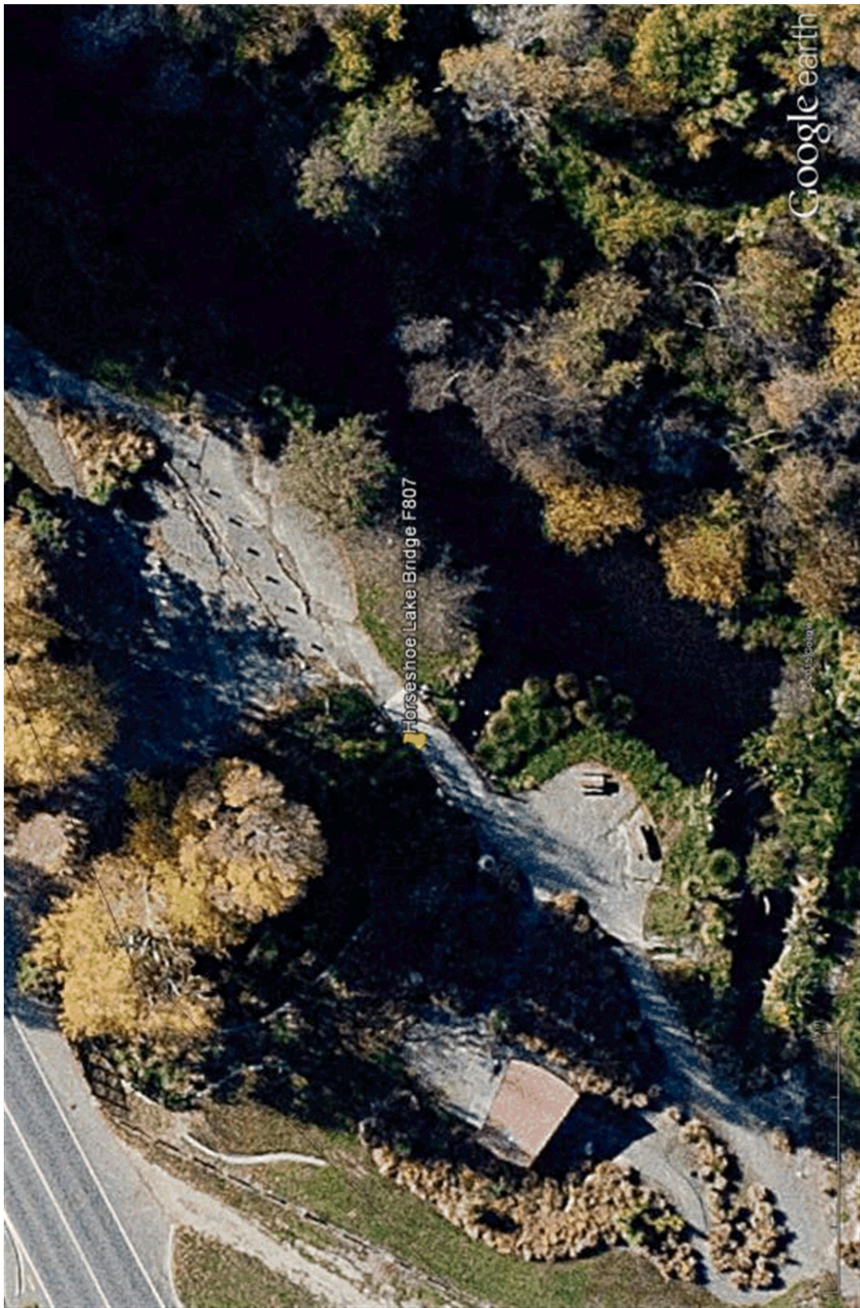




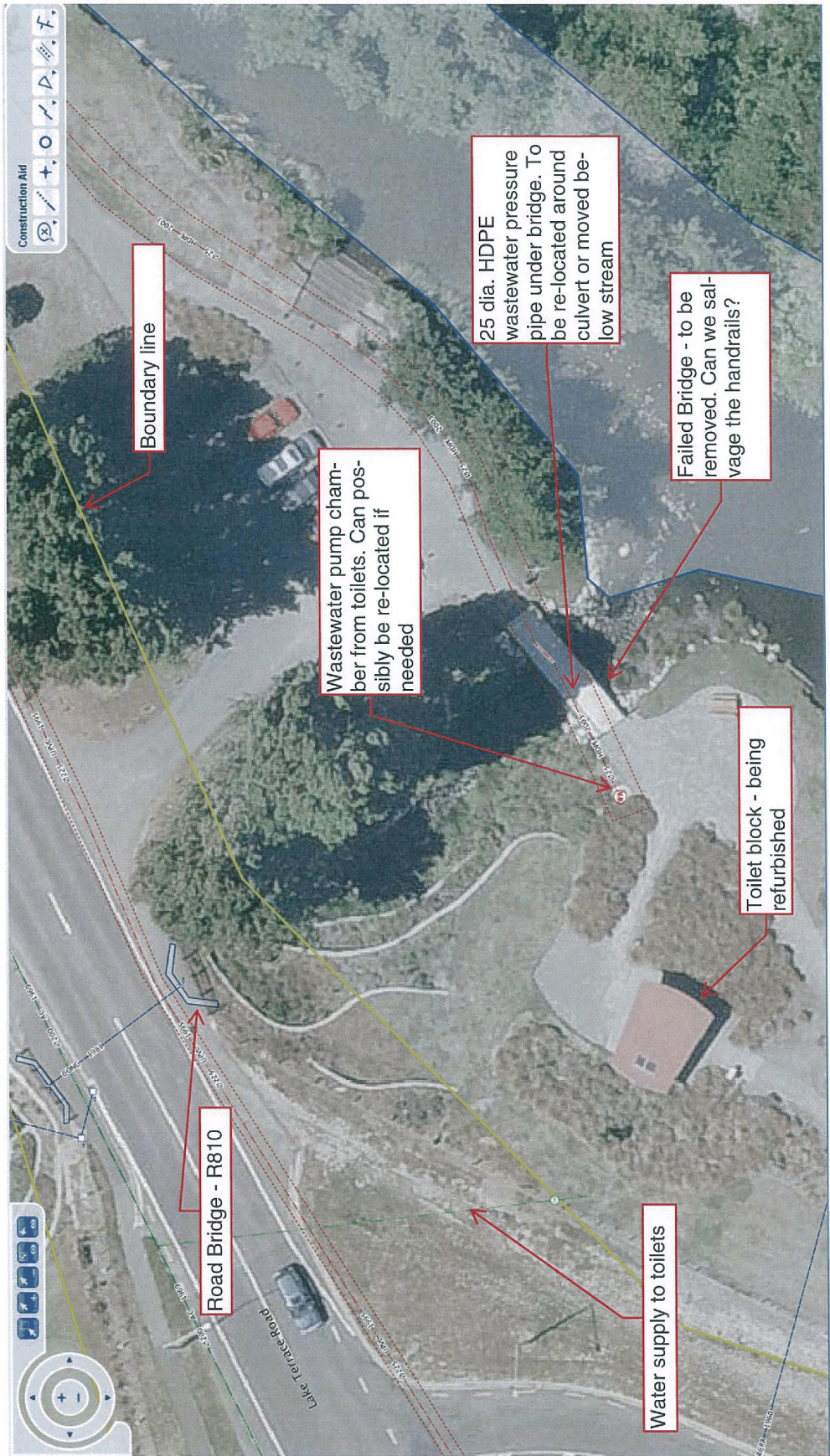
Horseshoe Lake Bridge F807
Desk study

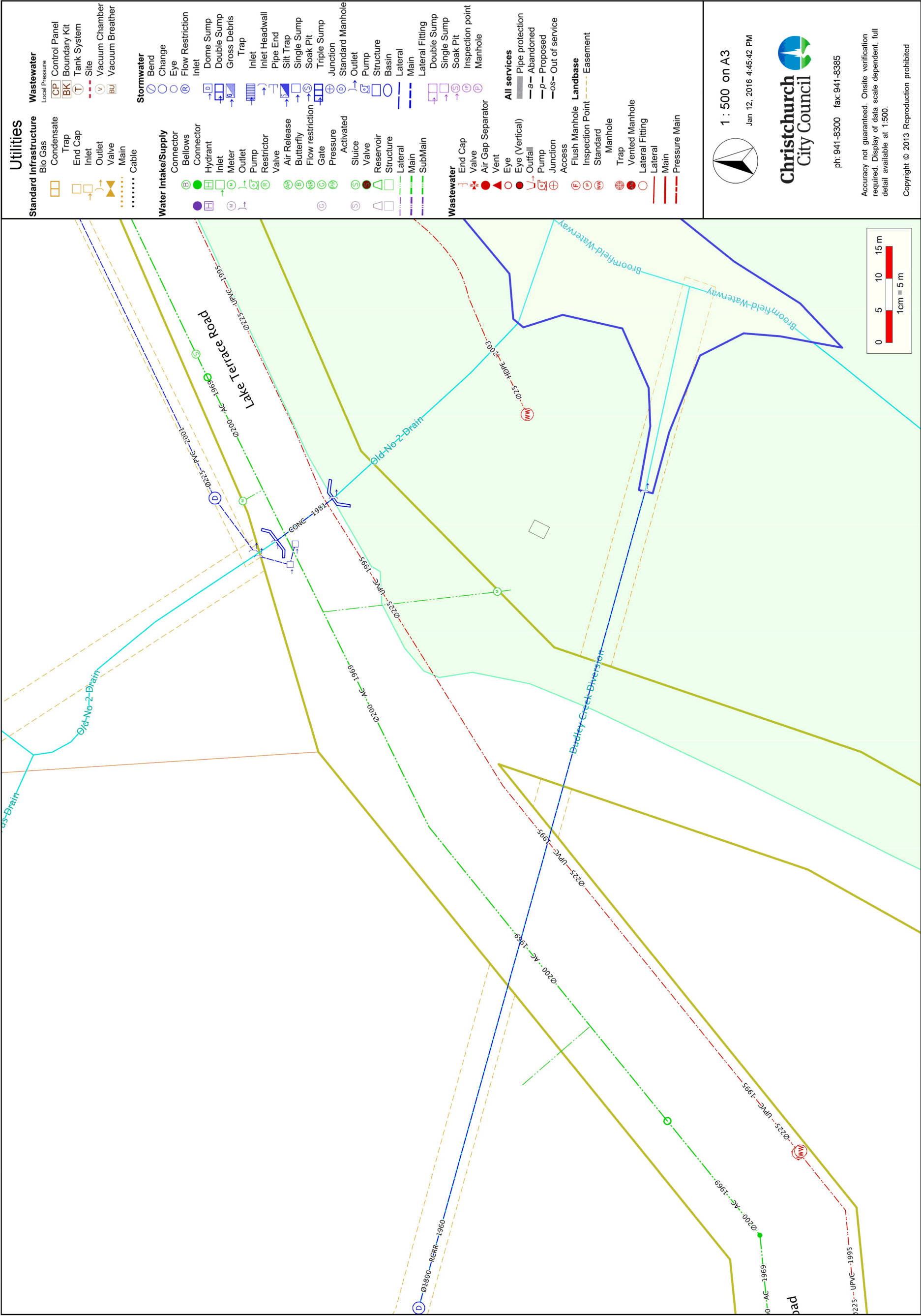


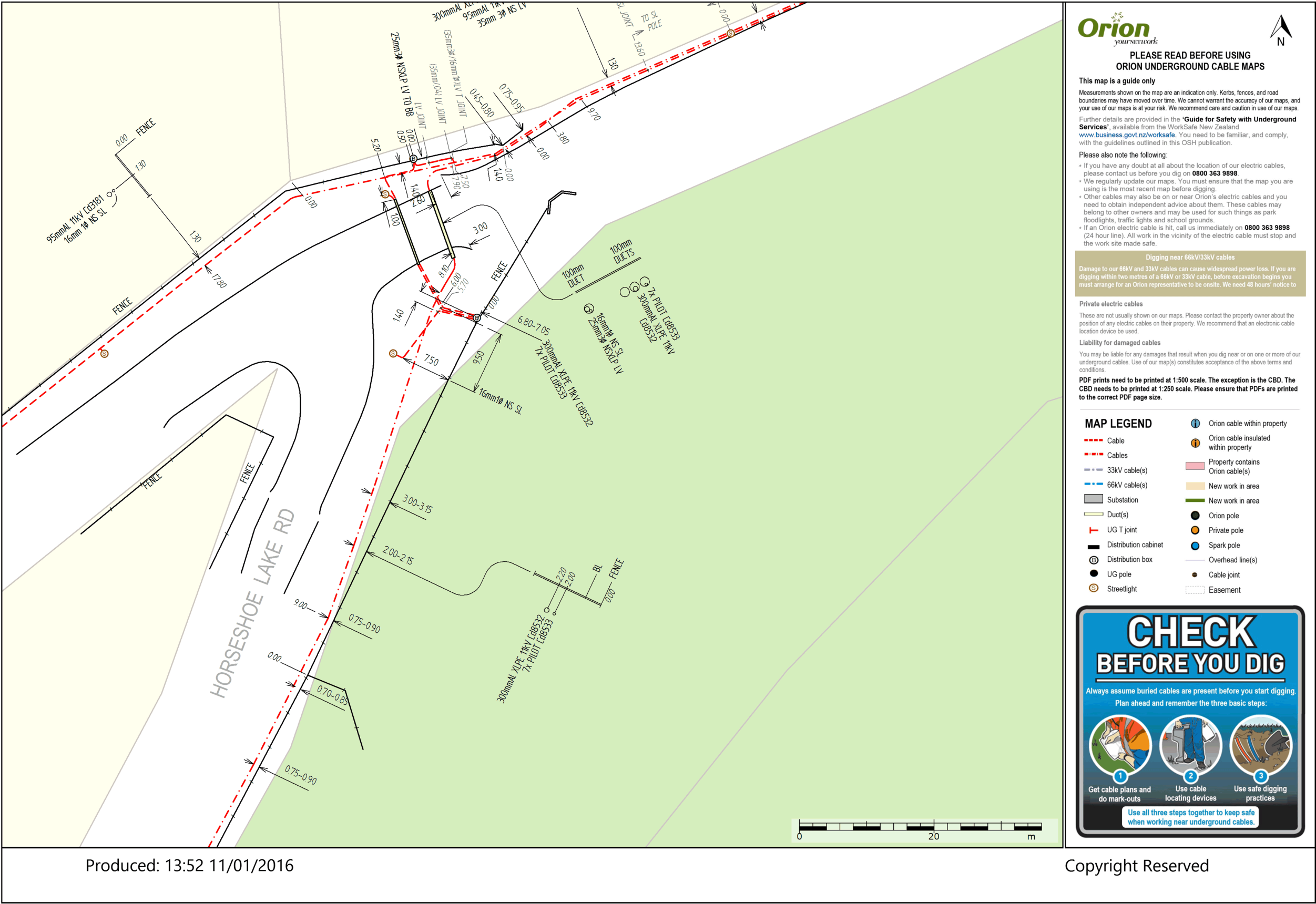
Site plan

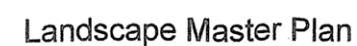


Due to size restrictions this page (the topographical map of Horseshoe Lake Reserve) will be separately circulated at the Board Meeting.









8. Coastal-Burwood Community Board Youth Development Fund 2016-17 - Timothy Carey, Reece Falck, Megan van Grinsven and O'Shay Rayner

Reference: 17/186343

Contact: Jacqui Miller

Jacqui.miller@ccc.govt.nz

941 5333

1. Purpose and Origin of Report

Purpose of Report

- 1.1 The purpose of this report is for the Coastal-Burwood Community Board to consider four applications received for the Board's 2016/17 Youth Development Fund.
- 1.2 There is currently \$3,500 remaining in this fund.

Origin of Report

- 1.3 This report is to assist the Community Board to consider four applications for funding from Timothy Carey, Reece Falck, Megan Van Grinsven and O'Shay Rayner.

2. Significance

- 2.1 The decisions in this report are of low significance in relation to the Christchurch City Council's Significance and Engagement Policy.
 - 2.1.1 The level of significance was determined by the number of people affected and/or with an interest.
 - 2.1.2 Due to the assessment of low significance, no further community engagement and consultation is required.

3. Staff Recommendations

That the Coastal-Burwood Community Board:

1. Approves a grant of \$450 from its 2016/17 Youth Development Fund to Timothy Carey towards the costs of attending the Ice Hockey Friendship Tournament in Saint Paul, Minnesota from 12-21 March 2017.
2. Approves a grant of \$450 from its 2016/17 Youth Development Fund to Reece Falck towards representation in the Junior Davis Cup team to represent New Zealand in New Delhi, India from 11 - 19 March 2017.
3. Declines a grant from its 2016/17 Youth Development Fund to Megan van Grinsven towards National Tag Football Tournament in Auckland from 23-26 February 2017.
4. Approves a grant of \$300 from its 2016/17 Youth Development Fund to O'Shay Rayner towards the costs of representing Te Waipounamou Netball U13 squad at the National Easter Tournament in Auckland from 13-14 April 2017.

4. Applicant 1 – Timothy Carey

- 4.1 Timothy Carey is 13 years old and lives in Wilmington Place in Shirley. Timothy is seeking funding support to attend the Ice Hockey Friendship Tournament in Saint Paul, Minnesota from the 12 to the 21 March 2017.

- 4.2 Timothy has been playing ice hockey for 4 years and is a goal defender. In 2016 Timothy was in the U14's for Canterbury helping to bring home goal medals in the National New Zealand tournament. He was also awarded the goalie of the year award for the third year in a row.
- 4.3 Whilst in the finals in Queenstown he completed in a skills competition where he picked up top goalie for both Canterbury and Nationally. For his Club he was presented top goalie for both peewees, midgets and top rookie of the year for the High School League. This year he is also playing Canterbury U17s.
- 4.4 Timothy is looking forward to the Minnesota tournament to compete against people from all over the world and to make lifelong friends.
- 4.5 The team have been doing some fundraising activities including sausage sizzles, support at events and have lodged a grant application to Youthtown for team uniform and training which is pending.
- 4.6 The following table provides a breakdown of the costs for Timothy Carey:

EXPENSES	Cost (\$)
Airfares, Travel Insurance, Accommodation, Van hire, tournament	4,800.00
Fees, food and uniforms	
Total	\$4,800.00

- 4.7 This is the first time the applicant has applied for funding.

5. Applicant 2 – Reece Falck

- 5.1 Reece Falck is 14 years old and lives in Achilles Street, Burwood. Reece has been selected for the Junior Davis Cup team to represent New Zealand in New Delhi, India from the 11 to the 19 March 2017.
- 5.2 Reece is a member of the Burwood Park Tennis Club and also attends Shirley Boys High School.
- 5.3 Reece recently won the U14 New Zealand Singles Nationals and has previously been selected to represent New Zealand three times.
- 5.4 The Junior Davis Cup will benefit him because it is a great experience to play alongside and against all the top junior tennis players from across the world. He hopes that he will also inspire and pass on what he learns at this event to other young tennis players at his Club and here in Christchurch.
- 5.5 Reece is contributing to the funds he needs for this trip through funds he has raised coaching tennis for juniors.
- 5.6 The following table provides a breakdown of the costs for Reece Falck:

EXPENSES	Cost (\$)
Tennis NZ Player contribution	1,000.00
Meals and Drinks	200.00
Incidentals – racket stringing etc	200.00
Tournament Entry Fee	150.00
Total	\$1,550.00

- 5.7 This is the second time the applicant has applied for funding. Reece received \$400 from the 2015/16 Youth Development fund to attend the ITF World Junior Tennis Championships in Europe from 19 June to the 3 August 2016.

6. Applicant 3 – Megan van Grinsven

- 6.1 Megan van Grinsven is 20 years old and lives in Lake Terrace Road, Burwood. Megan has been selected to play Tag Football for Canterbury at the Nationals from the 23 to the 26 February 2017 in Auckland.
- 6.2 The competition involves 100 teams, 2500 plus players, 16 age group divisions on 10 fields over three full days at the Bruce Pulman Stadium.
- 6.3 Megan currently works full-time as an office administrator and is living independently. She plays tag football for Celebration Church with training and games involving a 5 hour commitment during summer.
- 6.4 The expenses for the trip are currently self-funded, the team have not done any other team fundraising activities.
- 6.5 The following table provides a breakdown of the costs for Megan van Grinsven:

EXPENSES	Cost (\$)
Flights	150.00
Levies	95.00
Uniform	150.00
Accommodation (3x nights)	135.00
Transport	55.00
Food	45.00
Total	\$640.00

- 6.6 This is the first time the applicant has applied for funding.

7. Applicant 4 – O'Shay Rayner

- 7.1 O'Shay Rayner is 13 years old and lives in Eglinton Street, Avondale with her mother and two siblings. Rayner has been selected to play for the U13 Te Waipounamou Netball squad at the National Easter Tournament on April 2017 in Auckland.
- 7.2 O'Shay attends Avonside Girls High School, where she plays netball at school, she also plays for the Revelation Canterbury Club. She is currently training for netball 4 days per week, 2 sessions with Revelation and 2 sessions with Te Waipounamou.
- 7.3 The tournament is held over 4 days, and consists of 38 teams and is the only kind that caters for this group in NZ. The values of the tournament are Oranga (Health) and Te Whare Tapa Wha (Holistic Wellbeing). The tournament is unlike any other hosted in the country where participants are encouraged to celebrate their physical and mental wellbeing, Iwi, Hapu and Whanau while representing their local area and province.
- 7.4 The tournament brings together 11 regions from Northland to Southland with five age group teams per region.
- 7.5 O'Shay has submitted a funding application to Ngai Tahu for \$100 towards the tournament costs which is still to be confirmed.
- 7.6 The following table provides a breakdown of the costs for O'Shay Rayner:

EXPENSES	Cost (\$)
Accommodation, Food, Flights, Petrol, Affiliation Fee	505.00
Koha and Uniform	

Total	\$505.00
-------	----------

7.7 This is the first time the applicant has applied for funding.

Attachments

There are no attachments to this report.

Confirmation of Statutory Compliance

Compliance with Statutory Decision-making Requirements (ss 76 - 81 Local Government Act 2002).

(a) This report contains:

- (i) sufficient information about all reasonably practicable options identified and assessed in terms of their advantages and disadvantages; and
- (ii) adequate consideration of the views and preferences of affected and interested persons bearing in mind any proposed or previous community engagement.

(b) The information reflects the level of significance of the matters covered by the report, as determined in accordance with the Council's significance and engagement policy.

Signatories

Author	Jacqui Miller - Community Recreation Advisor
Approved By	Jo Wells - Manager Community Governance, Coastal-Burwood

9. Coastal-Burwood Community Board Youth Development Fund 2016/17 - Te Waipounamu Maori Netball U19 Team

Reference: 17/224416

Contact: Jacqui Miller jacqui.miller@ccc.govt.nz

941 5333

1. Purpose and Origin of Report

Purpose of Report

- 1.1 The purpose of this report is for the Coastal-Burwood Community Board to consider a team comprising of 5 members who reside in the Coastal-Burwood ward applications received for the Board's 2016/17 Youth Development Fund.
- 1.2 There is currently \$3,500.00 remaining in this fund.

Origin of Report

- 1.3 This report is to assist the Community Board to consider an application for funding from 5 members of the U19 Te Waipounamu Maori Netball Team to attend the National Maori Netball Tournament in Auckland from the 14-16 April.

2. Significance

- 2.1 The decisions in this report is of low significance in relation to the Christchurch City Council's Significance and Engagement Policy.
 - 2.1.1 The level of significance was determined by the number of people affected and/or with an interest.
 - 2.1.2 Due to the assessment of low significance, no further community engagement and consultation is required.

3. Staff Recommendations

That the Coastal-Burwood Community Board:

1. Approves a grant of \$250 from its 2016/17 Youth Development Fund to Kowahi Williams towards attendance at the National Maori Netball Tournament in Auckland from 14-16 April.
2. Approves a grant of \$250 from its 2016/17 Youth Development Fund to Kyla Bartlett towards attendance at the National Maori Netball Tournament in Auckland from 14-16 April.
3. Declines a grant to Jessica Focoory, Bailey Waiterangi Hori Te Pa and Brook Christiansen as these three team members are working full-time.

4. Group Applicant Information

- 4.1 Te Waipounamu Maori Netball is affiliated with Aotearoa Maori Netball Oranga Healthy Lifestyles (AMNOHL). They have an annual tournament held at different regions every Easter which has been going since 1987, this years tournament will be AMNOHL's 30th anniversary.
- 4.2 Te Waipounamu under 19s have trialled and been successful in their selection to represent the Rohe at this year's 30th National Tournament. Te Waipounamu consists of five teams (U13, U15, U17, U19, and Premier) management and kaumatua. Whanau also travel to support our wahine.
- 4.3 The tournament is held over four days, and consists of 38 teams and is the only kind that caters for this group in NZ. The values of the tournament are Oranga (Health) and Te Whare Tapa Wha

(Holistic Wellbeing). The tournament is unlike any other hosted in the country where participants are encouraged to celebrate their physical and mental wellbeing, Iwi, Hapu and Whanau while representing their local area and province.

- 4.4 The tournament also attracts national selectors and coaches who are scouting for players, which offers the athletes possible pathways to further career and sport advancement opportunities. In the past Te Waipounamu have had two athletes (Brainne Petersen Premier player, Aliyah Dunn Under nineteen player), selected for the Aotearoa Maori Netball International Secondary Schools Team which competes in the International Secondary Schools Tournament and finished the team placed third.
- 4.5 Te Waipounamu under 19s have undertaken fundraising opportunities to lessen the financial impact on their whanau. Te Waipounamu's rohe does cover the whole South Island however this year the team is predominantly from lower socio-economic backgrounds with five team members residing in the Coastal-Burwood ward.
- 4.6 The following table provides a breakdown of the costs for each individual team member:

EXPENSES	Cost (\$)
Flights	358.00
Transport	50.00
Meals	80.00
Koha	20.00
Marae	103.00
Total	\$611.00

None of these applicants have previously received funding.

5. Applicant 1 – Kowahi Williams

- 5.1 Kowhai Williams a 18 year old who lives in Aranui is currently unemployed involved with her local community church as youth group leader.
- 5.2 She states that "Many of the younger girls look up to me and respect me". She also coaches younger players in basketball at her old high school and share her skills with local primary school kids who play netball.

6. Applicant 2 - Jessica Facoor

- 6.1 Jessica Facoor is 18 years old and lives in Parklands. Jessica is currently working full-time in a family business.
- 6.2 Jessica is also involved with Kia Toa Netball Club playing in the A team in Premier 2.

7. Applicant 3 - Bailey Waiterangi Hori Te Pa

- 7.1 Bailey Waiterangi Hori Te Pa is 19 years old and lives in North New Brighton.
- 7.2 Bailey works full time for Te Putahitanga o Te Waipounamu and plays Senior level netball for Saints Netball Club for the 2017 season.

8. Applicant 4 - Brook Christiansen

- 8.1 Brook Christiansen is 18 years old and lives in North New Brighton.
- 8.2 Brook works full time at Mitre 10 Mega in Papanui and since returning to Christchurch last year she is re-establishing links to play further Club netball in Christchurch.

9. Applicant 5 - Kyla Bartlett

- 9.1 Kyla Bartlett is 16 years old and lives in Aranui. Kyla attends Papanui High School where she is involved in her school Kapa Haka group
- 9.2 She also plays Club netball for the Revelations Church for the 2017 netball season.

Attachments

There are no attachments to this report.

Confirmation of Statutory Compliance

Compliance with Statutory Decision-making Requirements (ss 76 - 81 Local Government Act 2002).

(a) This report contains:

- (i) sufficient information about all reasonably practicable options identified and assessed in terms of their advantages and disadvantages; and
- (ii) adequate consideration of the views and preferences of affected and interested persons bearing in mind any proposed or previous community engagement.

(b) The information reflects the level of significance of the matters covered by the report, as determined in accordance with the Council's significance and engagement policy.

Signatories

Author	Jacqui Miller - Community Recreation Advisor
Approved By	Jo Wells - Manager Community Governance, Coastal-Burwood

10. Coastal-Burwood Community Board Area Report

Reference: 17/234730

Contact: Jo Wells

jo.wells@ccc.govt.nz

941 6451

1. Purpose of Report

The purpose of this report is to resource the Community Board to promote a pro-active partnership approach to decision-making between the Council and Community Boards working together to achieve the best outcomes for the city with decisions being made with a good understanding of community views.

2. Staff Recommendations

[That the Coastal-Burwood Community Board:](#)

1. [Receive the Area Update.](#)

3. Community Board Activities and Forward Planning

3.1 Community Board Plan update against outcomes

It is anticipated that the Community Board Plan will be reviewed and updated and come into effect from 1 July 2017. A workshop is being planned for the week of 27 March 2017.

3.2 Memos/Information reporting back on Community Board matters

3.2.1 Outwards Correspondence

The following is outwards correspondence in response to discussions at Board meetings or requests to follow up from the Board. Please see attachments for correspondence.

- Linda Callaghan – Fairway Reserve Basketball Court Noise Complaint, please refer attachment A.
- Christchurch School of Gymnastics – Letter of support, please refer attachment B.

3.2.2 Broad Park Slide

Members will be aware of delays in repairing the Broad Park slide. There was a recent media enquiry about this and the following detailed response was provided:

What kind of part is it?

The slide is being fully replaced. The corrosion on the frame is excessive and the chute at the bottom does not comply with new playground safety standards. We will be replacing the slide 'like for like' with a new one of similar height and design (please see image attached).

Where is it coming from?

The playground supplier was sourced by a contractor.

Why does it take seven months to get here?

It has been difficult to find a supplier that can provide a slide very similar (in dimensions) to the existing one. The company that made the existing slide is out of business. The slide has been ordered, and all going well we can expect it to be delivered in 12 weeks.

How much does it cost?

Approximately \$9,000 including installation.

Will the slide be out of action until this part arrives?

Yes, the corrosion on the frame is excessive and the chute at the bottom does not comply with new playground safety standards.

For the concept design of the Broad Park slide please refer to attachment C.

3.3 The provision of strategic technical and procedural advice to the Community Board

3.3.1 Nil to report at this time.

3.4 Board area Consultations/Engagement

3.4.1 Regenerate is holding an Otakaro Avon River Corridor's Community Day

When: Saturday 25 March 2017

Time: 10am - 3pm

Location: Haeata Community Campus, 240 Breezes Rd, Wainoni

3.5 Submission Opportunities

3.5.1 Nil to report at this time.

3.6 Annual Plan and Long Term Plan matters

3.6.1 Time frame for 2017 Annual Plan process

March/April 2017 Ward based engagement and consultation

June 2017 Council adopts the Annual Plan

Sept/Oct 2017 Preparation of draft Long Term Plan

The dates of the Coastal-Burwood public annual plan engagement sessions are 29 March and 3 April.

We are awaiting a one-page fact sheet for the Coastal-Burwood Ward.

3.7 Development of Civil Defence Emergency Plans

3.7.1 A small Council staff group citywide has been set up to identify where we are at in terms of community Responsiveness / Resilience/Emergency Preparedness Plans. This is essentially a stocktake of what is currently happening or available in communities. This will feed into a more co-ordinated approach for CDEM to work with communities in this area. In the Coastal-Burwood areas there are many examples of spontaneous responses by community groups, churches and individuals getting together and supporting communities in an emergency. Two identified community respondents in the earthquakes of 2010/2011 were funded to continue their work in community support/response by the Coastal-Burwood Community Board (in its previous incarnation as the Burwood/Pegasus Community Board), these are briefly outlined below.

Action: A workshop to be set up for week of 20 March 2017 to discuss Board's role in Community response plans.

3.8 Requests for information from Board meeting on Newline

Members are invited to consider items for inclusion in Newline.

3.9 Significant Board matters of interest to raise at Council

Board members are requested to highlight significant matters from the meeting to be raised by the Chair at the next Council Meeting (Community Board reports) on Thursday 13 April.

4. Key Local Projects (KLPs) and Strengthening Communities Funded Projects

The three Community Board, 'Key Local Projects' are Aranui Community Trust Incorporated (ACTIS), People Empowerment Environmental Enhancement Project (PEEEP) previously known as Project Employment Environmental Enhancement Project and Rawhiti Community Sports Incorporated.

In the 2015/16 funding round all key local projects were awarded funding for two years.

- 4.1 The Aranui community Trust (ACTIS) has received \$40,000 for the past two years towards the manager's wages and the annual family festival AFFIRM. The Aranui Community Trust provides services, events and opportunities for the Aranui community to be involved in the betterment of the Aranui community on a local, regional and national level. The manager oversees the staff and programmes of the Trust and associated services. Annual attendances of the AFFIRM festival see between 3,000 and 8,000 people attend with information stalls around healthy choices, education, employment, training opportunities and cultural and community performances.
- 4.2 PEEEP was awarded \$35,000 for each year towards staff wages. They continue to work in partnership with the Council graffiti removal programme, Coast Care beach maintenance programme, NZ care properties maintenance and assist individuals and not for profit groups in the community.
- 4.3 Eastern Community Sport and Recreation formerly known as Rawhiti Community Sports Incorporated received \$15,000 for each year towards wages for their Community Sport manager position. A key aspect of this position is to continue developing new strategies and programmes. Programmes which the Sports Manager currently oversees include a Junior and Senior Touch Module, OSCAR afterschool and Holiday care, \$2 Pool Project, managing Kiwisport staff and the Eastern School Zone sports cluster.

5. Significant Community Issues

- 5.1 Nil to report at this time.

6. Major Community and/or Infrastructure Projects

6.1 Community Facilities

6.1.1 New Brighton Regeneration Hub

The New Brighton Regeneration Hub is now open to the public on Tuesdays. Appointments can be made with staff from the agencies operating at the hub outside this opening day.

6.2 Partnerships with the community and organisations

6.2.1 Recreation Services Celebrate 25 years

As part of a week of birthday celebrations, Recreational Services, the parks maintenance contractor for the East, delivered gifts of materials and equipment to three community groups in the Coastal-Burwood Ward. Ed Hadfield Operations Manager Christchurch and Vera Yakzhik Team Manger Horticulture, visited Aranui Tool Shed, New Brighton Community Garden and the Guardians of Rawhiti. The gifts included compost, gardening tools and equipment and gift vouchers.



New Brighton Community Garden



Aranui Tool Shed

6.3 Infrastructure projects underway

6.3.1 South New Brighton Jetty – Reconstruction

The Council has recently let a contract to Solutions 2 Access for a tender price of \$378,692.98 to reconstruct South New Brighton Jetty.

This work will involve deconstructing the existing jetty and rebuilding it to a more robust standard.

It is expected that the work will commence shortly and take fourteen weeks to complete.

No work is anticipated on Sundays or Public Holidays other than essential work relating to site safety and the mitigation of dust nuisance to properties and the public. A Public Information leaflet seeking comment on this project has already been circulated.

6.4 Events Report Back

6.4.1 Parklands @ Play – Sunday 19th February 2017, 3-6pm

It is estimated the attendance at this event was approximately 1000 to 1200 people. The weather for this event was not ideal with a cold easterly blowing.

The event planning group for Parklands @ Play 2017 would like to present to the Board in the near future as part of the group's accountability for funding.

6.4.2 I Love New Brighton 6 February 2017, 11am to 3pm

It is estimated the attendance at this event was approximately 5,000 to 6,000 people.

The event planning group for I Love New Brighton 2017 would like to present to the Board in the near future as part of the group's accountability for funding.

6.4.3 Childrens' Day Sunday 5th March 2017

This event took place in the red zone next to Locksley Avenue.

It is estimated the attendance at this event was approximately 10,000 people. There was a lot of very positive received regarding the public being able to access this space for a community event. This event involved a huge amount of voluntary support with over 200 volunteers involved on the day.

7. Parks, Sports and Recreation Update (bi-monthly)

7.1 Local Parks Update

We expect an update for the next report.

7.2 Sports Parks Update

No update to provide at this time.

7.3 Capital Works Projects

No update to provide at this time.

8. Community Board funding budget overview and clarification

8.1 The Board's funding update is attached, please refer to attachment D.

Attachments

No.	Title	Page
A ↓	Linda Callaghan re Fairway Reserve Basketball Court Noise Complaint	67
B ↓	Christchurch School of Gymnastics re letter of support	68
C ↓	Broad Park Slide Concept Design	69
D ↓	2016-19 Coastal-Burwood Funding Update	70

Signatories

Authors	Katie MacDonald - Community Support Officer Peter Croucher - Community Board Advisor Jo Wells - Manager Community Governance, Coastal-Burwood
Approved By	Jo Wells - Manager Community Governance, Coastal-Burwood

8 March 2017

Linda Callaghan
12B Giles Place
Shirley
Christchurch 8061

Re: Fairway Reserve Basketball Court – Noise Complaint

Dear Linda

Thank you for attending the Coastal-Burwood Community Board's meeting on Monday and responding to the Board's invitation to share your experiences of noise from the Fairway Reserve basketball court.

This is to advise you of the Board's main decision on this matter, which was to request staff to explore the viability of a range of options to address the noise issues, including acoustic/sound proof fencing with incorporated appropriate planting options and enforcement options and to report back to the Board as soon as is practically possible.

I will let you know when that report has been completed and is publically available and also what meeting it will be presented to.

Yours sincerely

Peter Croucher
COMMUNITY BOARD ADVISOR
COASTAL-BURWOOD COMMUNITY BOARD

TRIM: 17/235006

Community Support, Governance & Partnerships Unit
Shirley/Service Centre, 36 Marshland Road, Christchurch, 8154
PO Box 73023, Christchurch, 8154
Phone: 03 941 5305, Mobile: 027 434 7551
Email: Peter.croucher@ccc.govt.nz
www.ccc.govt.nz

10 March 2017

Avril Enslow MNZM
Chief Executive
Christchurch School of Gymnastics
PO Box 18-827
Christchurch

Dear Avril

Re: Christchurch School of Gymnastics Inc. (CSG) Community Board Update

The Coastal-Burwood Community Board is pleased to give their support in principle to the Christchurch School of Gymnastics rebuild proposal for QEII Park.

The Board can see that the School has contributed to the children mainly from the East in the following ways:

- ☐ Physical skills through gymnastics
- ☐ Confidence, goal setting and leadership skills
- ☐ Social skills from group participation for children and their parents.

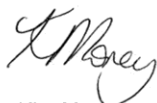
The Board is supportive of the School's wish to continue their activities and growth plans in QEII Park and acknowledges the close connection to the former QEII Aquatics and Recreation centre which provided good partnership activity. The future siting of the School in conjunction with the planned Eastern Recreation and Sports Centre and the two relocated secondary schools will retain these values and be an important part of the development of this sport and educational hub for the east of Christchurch.

The Board notes the following factual information:

- ☐ CSG has had a presence on QEII Park for 20 years (from 1997)
- ☐ CSG has committed to staying on QEII Park and to rebuild their gymnastics stadium
- ☐ CSG employs 60 staff which adds to the economic benefits and is possibly the biggest sports employer in the area.
- ☐ The large number of schools in the area that access CSG programmes.
- ☐ CSG has over 2,000 members and in addition provides participation and recreational and movement opportunities to toddlers through to adults

The Board wishes you every success with your request for funding and a replacement lease for your proposed rebuild on the Park.

Yours sincerely



Kim Money
CHAIRPERSON
COASTAL-BURWOOD COMMUNITY BOARD

TRIM: 17/231513

Community Support, Governance and Partnerships Unit
Shirley/Service Centre, 36 Marshland Road, Christchurch, 8154
PO Box 73023, Christchurch, 8154
Phone: 03 941 5305, Mobile: 027 434 7551
Email: Peter.croucher@ccc.govt.nz
www.ccc.govt.nz



Updated as at	Coastal-Burwood Community Board Funds 2016/17		
20-Feb-17	Coastal-Burwood Discretionary Response Fund	Allocation 2016/17	Board Approval
	Discretionary Response Fund Budget 2015/2016	14,382.00	
	Amount transferred to Youth Development Fund	4,000	
	Remainder for allocation in Discretionary Response Fund	10,382	
	Youth Development Fund - Opening Balance allocation	8,000.00	
	Solomon Faitaua-Nanai	250.00	18-Jul-16
	Tyreice Tuliau	250.00	18-Jul-16
	Malia Faitaua-Nanai	250.00	18-Jul-16
	Johanna Church	500.00	18-Jul-16
	Kurtis Jolly	500.00	18-Jul-16
	Brooke Whitman	250.00	18-Jul-16
	Rebecca Norris	500.00	18-Jul-16
	Sean Aklita Takai	500.00	18-Jul-16
	Jai Oakley	150.00	18-Jul-16
	James Millar	150.00	18-Jul-16
	Dara O'Malley	150.00	18-Jul-16
	Myka Black	150.00	18-Jul-16
	St Thomas of Canterbury (Sua Aiiloilo and Amani Khoi)	400.00	1-Aug-16
	Ruby Kitchen	500.00	20-Dec-16
	Youth Development Fund BALANCE	3,500.00	
	Discretionary Response Fund - Total Allocation	14,382.00	
	Avon-Otakaro Inc - Matariki in the Zone (approved last financial year but not paid until 29 July 2016)	5,031.00	16-May-16
	Establish Youth Development Fund (transfer to YDF)	4,000.00	18-Jul-16
	Pleasant Point Yacht Club Inc	3,730.00	1-Aug-16
	South Brighton Residents Association	1,621.00	15-Aug-16
	Allocation (First Tranche)	-25,104.00	
	Aranui Community Trust Inc	7,000.00	15-Nov-16
	QEII Swim Club	5,000.00	15-Nov-16
	Duke Festival of Surfing	4,000.00	5-Dec-16
	The Jam Youth Event	1,600.00	20-Dec-16
	\$2 Pool Project	7,500.00	20-Dec-16
	Allocation (Second Tranche)	-47,420.00	
	Avon-Otakaro Inc - Poppies Over Gallipoli ANZAC Garden Project	4,168.30	20-Feb-17
	Discretionary Response Fund BALANCE	43,255.70	
	Total Balance of unallocated DRF/YDF	46,755.70	

11. Elected Member Information Exchange

This item provides an opportunity for Board Members to update each other on recent events and/or issues of relevance and interest to the Board.

12. Question Under Standing Orders

Any member of the local authority may at any meeting of the local authority at the appointed time, put a question to the Chairperson, or through the Chairperson of the local authority to the Chairperson of any standing or special committee, or to any officer of the local authority concerning any matter relevant to the role or functions of the local authority concerning any matter that does not appear on the agenda, nor arises from any committee report or recommendation submitted to that meeting.

Wherever applicable, such questions shall be in writing and handed to the Chairperson prior to the commencement of the meeting at which they are to be asked.