

14. 3. 2013

**SPREYDON/HEATHCOTE COMMUNITY BOARD**  
25. 2. 2013

**Report of a meeting of the Spreydon/Heathcote Community Board**  
**held on 25 February 2013 at 5pm in the Board Room,**  
**Beckenham Service Centre, 66 Colombo Street**

**PRESENT:** Phil Clearwater (Chairperson), Barry Corbett, Paul McMahon, Helene Mautner, Karolin Potter, Tim Scandrett and Sue Wells

**APOLOGIES:** An apology for lateness was received and accepted from Karolin Potter who arrived at 5.53pm and was absent for clauses 1, 3, 4, 5, 6, 7, 10, 11, 12, 15. and for part of clause 13.

An apology for early departure was received and accepted from Barry Corbett who departed at 5.30pm and returned to the meeting at 6pm, and was absent for clause 12 and part of clauses 11 and 13.

The Board reports that:

**PART A - MATTERS REQUIRING A COUNCIL DECISION**

**1.  CHRISTCHURCH SOUTHERN MOTORWAY –ANNEX ROAD CYCLE AND PEDESTRIAN UNDERPASS MOTORCYCLE BAN**

The Board considered a report seeking its recommendation that the Council approve that access through the Annex Road underpass under the Christchurch Southern Motorway is restricted to pedestrians and cyclists only.

**BOARD RECOMMENDATION**

The staff recommendation be adopted.

**2. COMMUNITY BOARD ADVISER'S UPDATE**

**2.1 WIGRAM-MAGDALA LINK SCHEME**

The Board considered the attached amended plan (attachment to Clause 2 – plan reference rd3350s3-001) with regard to the Nazareth Avenue / Magdala Place in relation to Wigram-Magdala Link Bridge Scheme and to make a recommendation to the Council.

**BOARD RECOMMENDATION**

That the amended plan (plan reference rd3350s3-001).for the Wigram-Magdala Link Scheme be adopted

**PART B - REPORTS FOR INFORMATION**

**3. DEPUTATIONS BY APPOINTMENT**

**3.1 OTAUTAHU YOUTH COUNCIL**

Hamish Keown and James Adams from Otautahi Youth Council addressed the Board regarding youth creating a voice in the community and with the Council.

The Chairperson thanked Hamish and James Adams for explaining the Youth Council's work to the Board.

4. **PETITIONS**

Nil.

5. **CORRESPONDENCE**

Nil.

6. **BRIEFINGS**

Nil.

7. **EARTHQUAKE DESIGN AND CAPABILITY**

Nil.

8. **COMMUNITY BOARD ADVISER'S UPDATE**

The Board received information on the following:

- ward earthquake matters – Earthquake Ward Recovery Advocate
- Plan Change 56

The Board **decided** to endorsed the feedback as attached on proposed plan change 56 – Business 1, 2 and 2P Zones – Urban Design and Amenity in Suburban Centres

Sue Wells declared an interest in this matter and took no part in the decision making.

Clause 2 (Part A) and Clause 14 (Part C) of these minutes record decisions in relation to this matter.

9. **BOARD MEMBER'S INFORMATION EXCHANGE**

Mention was made of the following matters:

- school closures and land swaps in the Ward area with regard to Community Board input.
- Old Rail Goods Shed on the corner of Colombo and Cass Streets.

The Board **decided** to write a letter to NZ Rail regarding the continued earthquake rubble dumped at the Old Rail Goods Shed on the corner of Colombo and Cass Streets which it understood would be well progressed towards removal by the end of 2012.

- CERA meetings with elected members.
- the lack of suitable premises for Non Government Organisations as a result of the earthquake.

**PART C - REPORT ON DELEGATED DECISIONS TAKEN BY THE BOARD**

10. **CONFIRMATION OF MINUTES – 5 FEBRUARY 2013**

The Board **resolved** that the minutes of the Board's ordinary meeting of 5 February 2013 be confirmed.

**11. RAPAKI ROAD: NO STOPPING RESTRICTION**

The Board considered a report seeking its approval that the stopping of vehicles be prohibited at any time outside 44 to 48 Rapaki Road.

The Board **resolved** that any existing parking restriction on the eastern side of Rapaki Road commencing at a point 524 metres south of its intersection with Centaurus Road and extending in a southerly direction for a distance of 80 metres be revoked.

The Board **resolved** to approve that the stopping of vehicles be prohibited at any time on the eastern side of Rapaki Road commencing at a point 524 metres south of its intersection with Centaurus Road and extending in a southerly direction for a distance of 80 metres.

**12. APPLICATION TO SPREYDON/HEATHCOTE COMMUNITY BOARD 2012/13 DISCRETIONARY RESPONSE FUND**

The Board considered two applications for funding from its 2012/13 Discretionary Response Fund from Rowley Resource Centre Inc for the Rowley Community Men's Shed project for the amount of \$2,643 and End of Times for the End of Times Capacity project for the amount of \$2,000.

The Board **resolved** to approve a grant of \$2,643 from its 2012/13 Discretionary Response Fund to Rowley Resource Centre Inc for the Rowley Community Men's Shed project towards costs of equipment for the Rowley Community Men's Shed.

The Board **resolved** to grant \$2,000 from its 2012/13 Discretionary Response Fund to End of Times for the End of Times Capacity Project towards costs for a keyboard and carry bag. This is dependant upon further quotes being obtained and reported to the Board by memorandum.

**13. APPLICATION TO SPREYDON/HEATHCOTE COMMUNITY BOARD 2012/13 DISCRETIONARY RESPONSE FUND**

The Board considered an application from the St Martins Volunteer Library of \$7,980 for the St Martins Volunteer Library Restart project from the 2012/13 Discretionary Response Fund.

The Board **resolved** to approve a grant of \$5,000 from its 2012/13 Discretionary Response Fund to St Martins Volunteer Library for the St Martins Volunteer Library Restart project.

**14. COMMUNITY BOARD ADVISER'S UPDATE**

**14.1 37 HAWFORD ROAD OPAWA - TREE CONDITION UPDATE MEMORANDUM**

The Board **resolved** to lay the matter on the table until the next meeting.

**14.2 COMMUNITY BOARD STRATEGIC GOAL SETTING**

The Board **resolved** to confirm the goals in the strategic planning document.

14. 3. 2013

**Spreydon/Heathcote Community Board 25.2.2013**

- 4 -

**15. NOTICES OF MOTION - NEW DISCRETIONARY RESPONSE FUND GRANT**

The following Notice of Motion was submitted by Sue Wells.

The Board **received** the Notice of Motion.

That the Community Board request staff to provide options for the establishment of a new fund designed to provide the community with access to small grants as seed funding for earthquake recovery volunteer projects. The new fund is to be established from the Discretionary Response Fund. The fund is to be easily accessible, with a speedy decision making process. The options to be provided to the Board at the meeting on 22 March 2013 for immediate implementation.

The Notice of Motion was seconded by Barry Corbett and being put to the meeting was declared **carried**.

The Board considered the manner in which the new Discretionary Response Fund would operate and **resolved** to allocate up to \$7,500 from the Discretionary Response Fund to establish this fund and that the maximum grants be \$250. Further that a process be developed delegating the authority to staff to process the applications and report to the Board..

**16. BOARD MEMBERS QUESTIONS UNDER STANDING ORDERS**

Nil.

The meeting concluded at 7.20pm.

**CONFIRMED THIS 5TH DAY OF MARCH 2013**

**PHIL CLEARWATER  
CHAIRPERSON**

14. 3. 2013

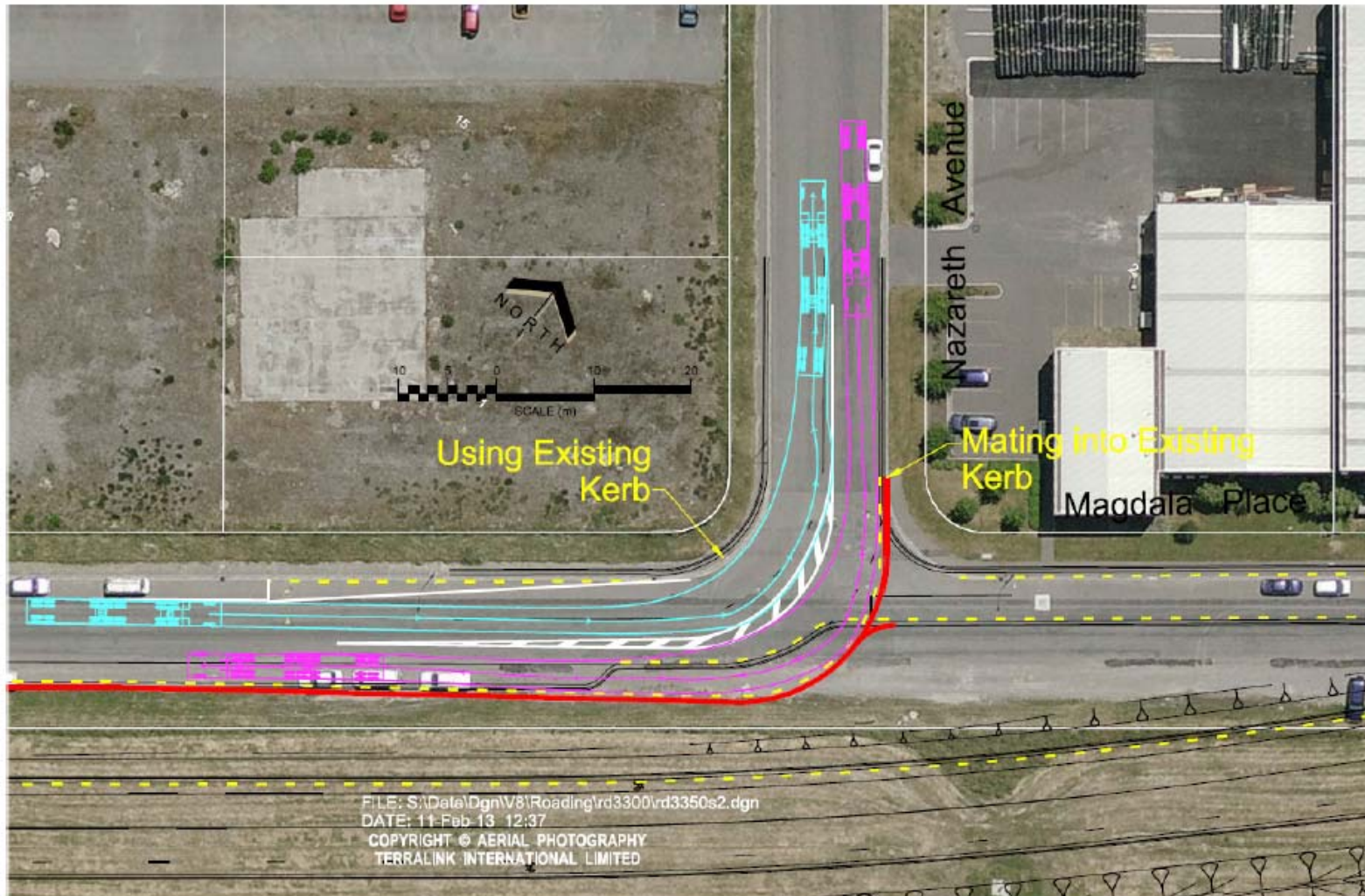
Spreydon/Heathcote Community Board 25.2.2013

- 5 -

ATTACHMENT TO CLAUSE 2.1

Wigram-Magdala Link Project  
Magdala PI / Nazareth Ave Minor Scheme Amendment

11 Feb 2013



## Spreydon/Heathcote Community Board 25.2.2013

- 6 -

**Spreydon/Heathcote Community Board  
Feedback on Proposed Plan Change 56 –  
Business 1, 2 and 2P Zones –  
Urban Design and Amenity in Suburban Centres**

Date: 19 Feb 2013

Re: Proposed Plan Change 56 – Business 1, 2 and 2P Zones - Urban Design and Amenity in Suburban Centres

The Spreydon/Heathcote Community Board provides the following feedback following the seminar session held on the 18 February regarding this matter.

1. *Is the Board supportive of Plan Change 56?*

The Board is supportive of Plan Change 56.

The Board attaches feedback from a community consultation undertaken following the earthquakes with residents from the ward regarding the use of the Beckenham Shopping area (Attachment 1). The Board considers that this feedback provides a recent community view point which is informative to the planned changes.

2.. *Are there any points of clarification the Board requires to understand the Plan Change?*

No.

3. *Does the Board have any points of concern?*

The Board would like to explore further ward level input into the urban design process. The Board has expressed this view previously in resolutions regarding the establishment of a ward urban design panel. The Board cites the Akaroa beautification committee process as an excellent example of community input into urban design. It should be noted that this committee gained traction with the community in the development application process while it was still an informal process.

Since the earthquakes the Board has undertaken early consultation with developers around the St Martins Supermarket rebuild which has enabled a smooth early input process and resulted in a more streamlined process for the development application.

The Board is concerned that there was no early consultation with the Board regarding this plan change process. The Board believes that early consultation with elected members is necessary in the development of such plan changes.

Overall the Board considers that there was insufficient early consultation with the Board .

*Phil Clearwater*

Phil Clearwater

Board Chairperson

**FUNDAMENTAL PRINCIPLES DISTILLED FROM CITIZENS' PERSPECTIVES EXPRESSED AT THE BECKENHAM WORKSHOP ON SATURDAY 10TH DECEMBER 2011**

The workshop was designed to provide residents with an opportunity to discuss the redevelopment following the earthquake and talk about what they want to be doing in this shopping area in the future. The principles presented below were distilled from the residents perspectives expressed at the workshop. The workshop was organised by the Spreydon Heathcote Community Board in consultation with the Beckenham Neighbourhood Association. **Spreydon Heathcote Community Board** acknowledge the work of Dr Phil Driver of OpenStrategies Ltd who facilitated the workshop held 10 December 2011.

Citizens using the Beckenham shopping area – a “charming corner of town”....want to:

1. be, and to feel, safe at all times, particularly in relation to vehicle movements
2. be able to easily use short term parking so they can make quick purchases and move on
3. buy a diverse range of good quality take-aways (one of the most recurring themes)
4. be able to ride bikes on physically safe pathways to, and through, the Beckenham shops area and park them securely (also an especially popular theme)
5. be able to buy a wide range of predominantly sustainably produced and/or fresh and/or healthy goods and services from small, intimate, personally operated and locally owned shops and businesses who know and relate to their regular customers and who take personal pride in the quality of their specific products or services
6. be able to browse for and to purchase a diverse range of small items and services (including recreational and cultural ‘services’) during the same visit to the shops – ie services/products which can be best bought locally and quickly, such as day-to-day food, consumables, haircuts, stamps, cycle repairs, shoe repairs, engraving, gifts, fax services etc, rather than wanting to be able to purchase major capital items such as cars, whiteware and machinery in Beckenham. This concept of doing many diverse things in many individual Beckenham shops during each visit was a frequently emphasised theme.
7. purchase goods and services which are neither cheap nor expensive but are of sound quality and good value for money, with services being provided in comfortable relaxed settings – “funky” and “casual” and “value-for-money” rather than “boutique”, so that they are affordable to young people
8. buy goods and services during early evenings and weekends when people are not at work
9. experience a sense that the Beckenham shopping area has been designed to pro-actively be environmentally sensitive and ecologically supporting so as to respond to likely future climate changes, food prices, fuel prices and availability and so on
10. enjoying a sense of ‘ownership’ of the area as being ‘our’ shopping centre with our local personality and flavour

11. be able to sit with friends somewhere peaceful (away from the road) and sheltered from the wind and with optional shade or sun, often sharing a meal or coffee but also just being together in a safe and attractive place
12. feel genuinely engaged with the design, decision-making, development and use of the Beckenham shops (this engagement to include young people), given that it will be the customers/users of the Beckenham shopping area who will make-or-break the success of the area
13. feel that the Beckenham shopping area is 'special' and 'unique' and 'local' and 'personal', ie has a distinct and integrated character which was created by local stakeholders and not by external forces (council, legislation, regulations, remote property owners)
14. feel that people have been given priority over cars, while recognising that vehicle access will nevertheless be a crucial component of the success of the Beckenham shops but that it will be as discreet as possible and ideally separate from walking, cycling and sitting areas
15. be able to drive safely through the shopping area with minimal delays or complicated manoeuvres
16. use clean public services such as public toilets and sheltered public spaces/seating areas, possibly with open-air concerts by small groups
17. do different things during the daytime (routine shopping), evenings (more entertainment dominated) and weekends (shopping plus entertainment plus more community orientation)
18. be able to easily access all areas, including businesses and public spaces (access by all citizens)
19. feel 'connected': to other citizens, to shop and business owners, to the wider Beckenham area and to the Port Hills
20. work in a shared (eg hot-desk) space or shared artists workshop/innovation lab alongside other locals
21. access and use world-leading technologies (eg lightening fast broadband, international conference calling, virtual technologies etc) in coffee shops and communal spaces
22. participate in activities which blend cultural activities such as local drama, films, music groups with food, drink, community-building and activities like laughter yoga, aerobics, dancing, informed debates and discussions, sharing of ideas, learning from each other
23. experience a blend of nature and the built environment
24. 'hang out' with friends in a safe environment, specially for young people after school, in evenings and during the weekend
25. participate in a range of activities in the church and church hall including spiritual, cultural and community building activities.